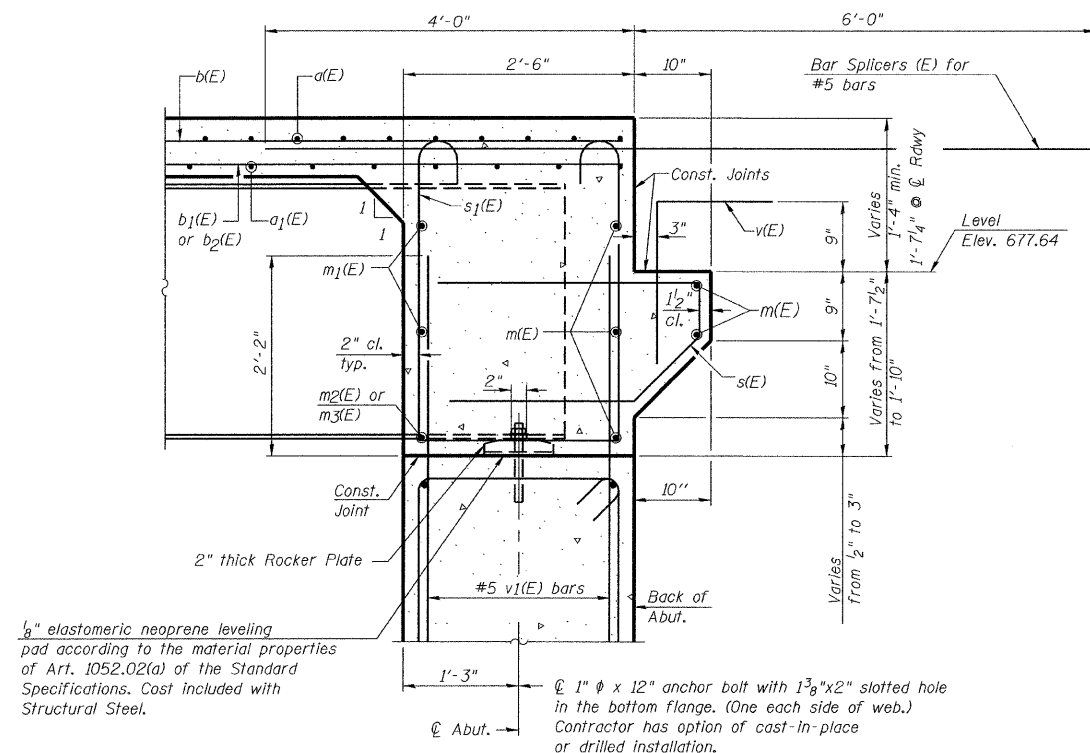
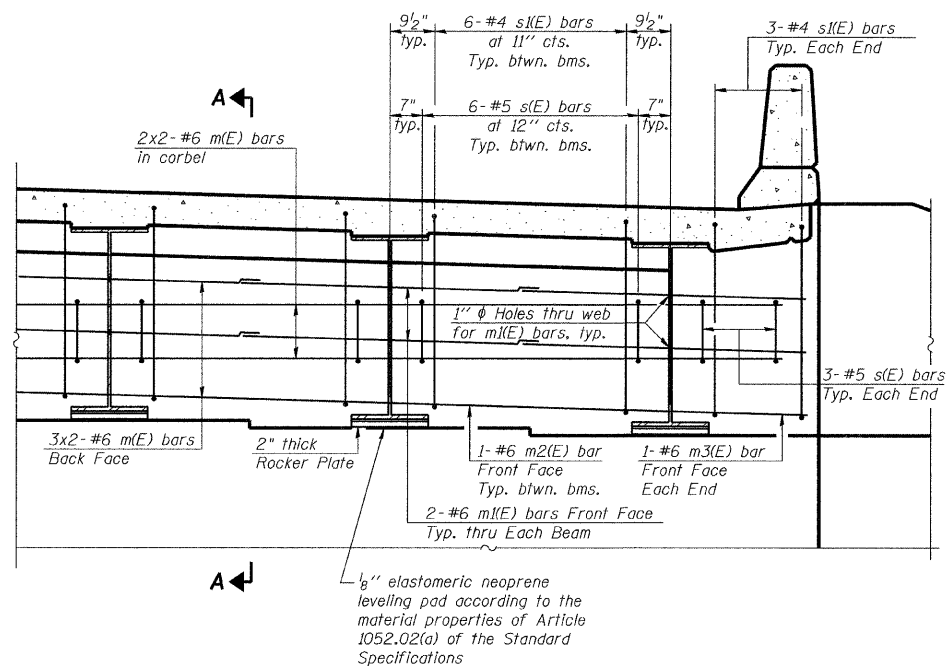


STATE OF ILLINOIS
DEPARTMENT OF TRANSPORTATION



SECTION A-A



DIAPHRAGM ELEVATION AT ABUTMENT

NOTES:

1. Reinforcement bars in diaphragm are billed with superstructure on sheet S9.
2. Concrete in diaphragm is included with Concrete Superstructure on sheet S9.
3. For details of bars s(E) & s1(E) see sheet S9.
4. The s(E) and s1(E) bars shall be placed parallel to the beams. Spacing for these bars shall be at right angles to the beams.
5. Minimum bar lap: #6 bar = 2'-9".
6. Work this sheet with sheets S8 and S9.

DESIGNED -	MRB
CHECKED -	KWS
DRAWN -	VH
CHECKED -	MRB

benesch

alfred benesch & company
Engineers • Surveyors • Planners
205 North Michigan Avenue, Suite 2400
Chicago, Illinois 60601
312-585-0450
Job # 3938.02

**INTEGRAL ABUTMENT DIAPHRAGM DETAILS
STRUCTURE NO. 027-0097**

SHEET NO. S10	F.A.P. RTE.	SECTION	COUNTY	TOTAL SHEETS	SHEET NO.
SHEETS S22	796	104 I & 105 BR-1	FORD	51	24
FED. ROAD DIST. NO.			ILLINOIS FED. AID PROJECT		
CONTRACT NO. 66848					

x:\3900s\3938\structures\ill5overkellycreek\final\plans\0270097-66848-00-dlad1.dgn

15:55:40

11/03/2009