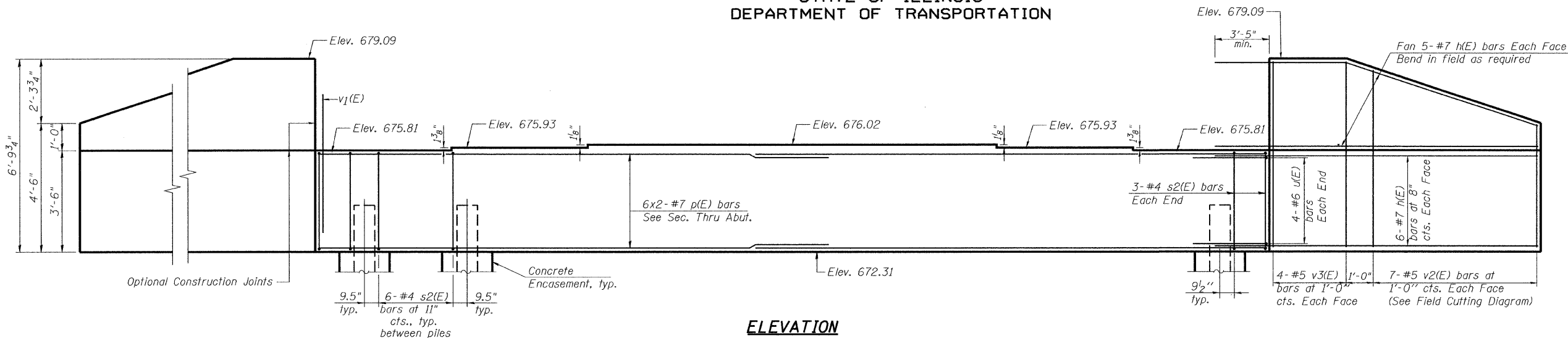


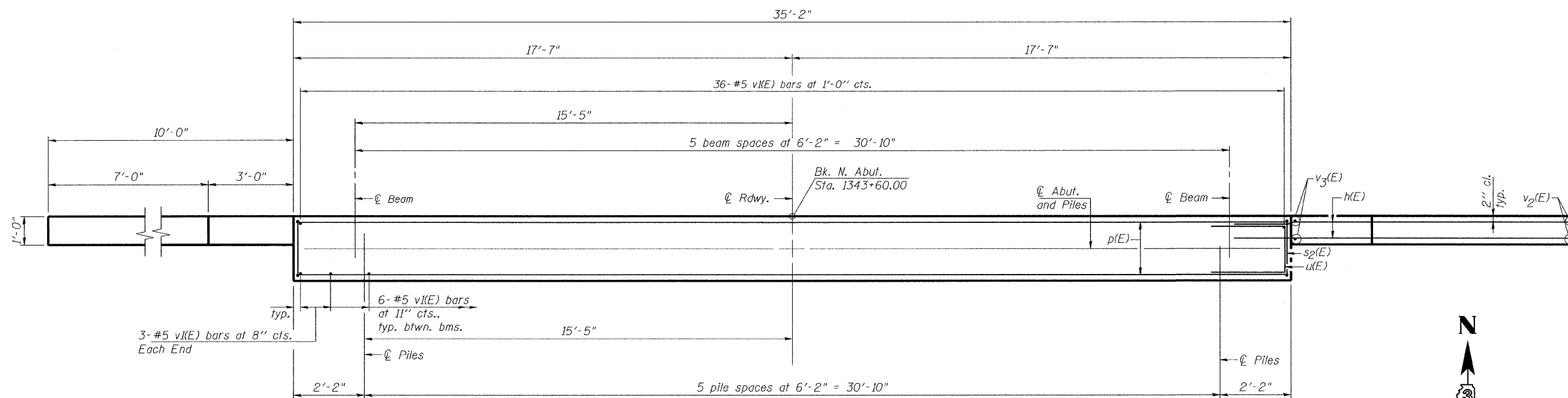
STATE OF ILLINOIS  
DEPARTMENT OF TRANSPORTATION

Note: Four steps monolithically with cap.



ELEVATION

SEC. THRU ABUT.



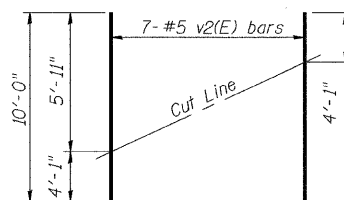
PLAN

BILL OF MATERIAL

Bar	No.	Size	Length	Shape
h(E)	44	#7	13'-5"	
p(E)	12	#7	19'-3"	
s2(E)	36	#4	11'-5"	□
u(E)	8	#6	7'-3"	□
v1(E)	72	#5	4'-4"	
v2(E)	14	#5	10'-0"	
v3(E)	8	#5	6'-5"	
Structure Excavation		Cu. Yd.	94.5	
Concrete Structures		Cu. Yd.	16.2	
Reinforcement Bars, Epoxy Coated		Pound	2,570	
Furnishing Steel Piles, HP12x53		Foot	280	
Driving Piles		Foot	280	
Test Pile Steel, HP12x53		Each	1	
Concrete Encasement		Cu. Yd.	2.1	

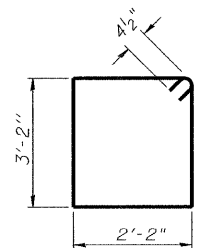
PILE DATA

Type: Steel HP12x53  
Nominal Required Bearing: 257 kips  
Factored Resistance Available: 128 kips  
Est. Length: 56 ft.  
No. Production Piles: 5  
No. Test Piles: 1

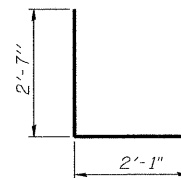


FIELD CUTTING DIAGRAM

Order v2(E) full length. Cut as shown and use remainder of bars in opposite face.



BAR s2(E)



BAR u(E)

NOTES:

- For details of Bar Splicers, see sheet S18.
- For details of piles and Concrete Encasement, see sheet S17.
- Minimum bar lap: #7 bar = 3'-5"
- For Foundation Layout, see sheet S3.

NORTH ABUTMENT DETAILS  
STRUCTURE NO. 027-0097

DESIGNED -	MRB
CHECKED -	KWS
DRAWN -	VH
CHECKED -	MRB

benesch

alfred benesch & company  
Engineers • Surveyors • Planners  
205 North Michigan Avenue, Suite 2400  
Chicago, Illinois 60601  
312-565-0450  
Job # 3938.02

SHEET NO. S15	F.A.P. RTE. 796	SECTION 104 I & 105 BR-1	COUNTY FORD	TOTAL SHEETS 51	SHEET NO. 29
SHEETS S22	CONTRACT NO. 66848				
FED. ROAD DIST. NO.		ILLINOIS FED. AID PROJECT			