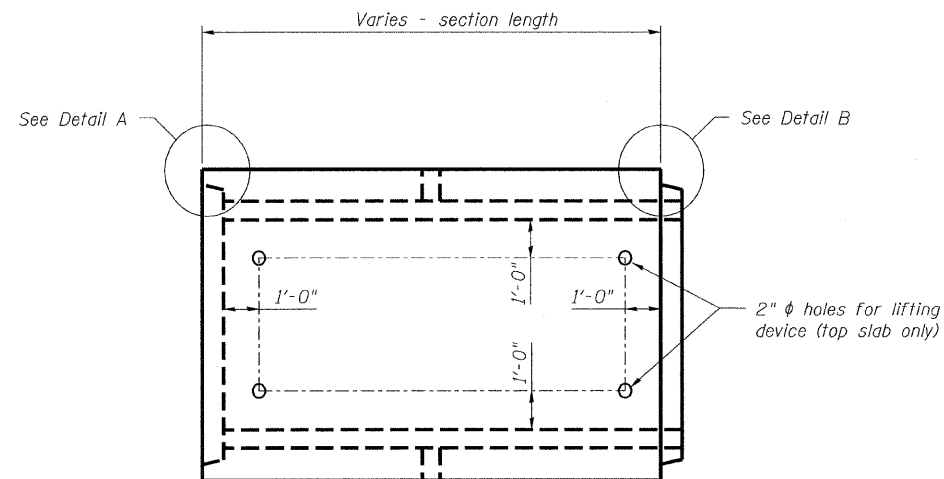
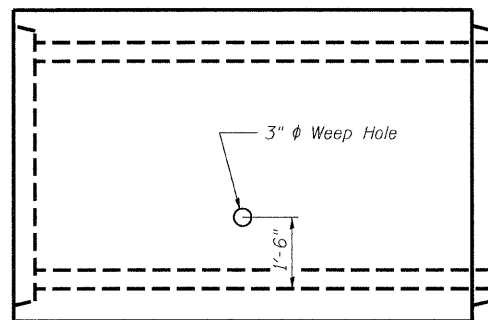


STATE OF ILLINOIS
DEPARTMENT OF TRANSPORTATION

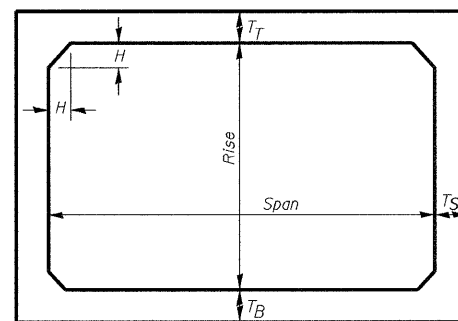


Note: Location of lifting holes may be varied as needed to clear reinforcement.

PLAN



ELEVATION

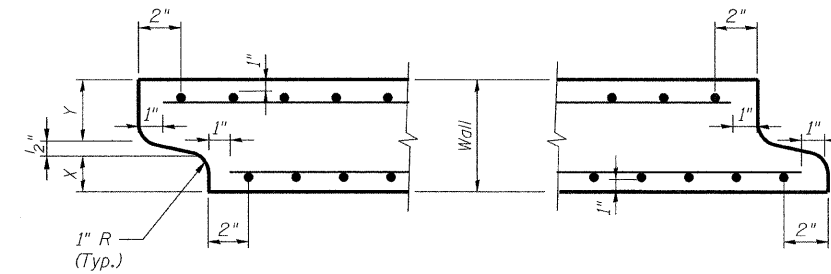


Note: The haunch dimension h , is equal to the wall thickness t_s .

TYPICAL BOX SECTION

Span, Feet	T_T , inches		T_B , inches		T_S , inches	
	M 259	M 273	M 259	M 273	M 259	M 273
3	4	7	4	6	4	4
4	5	7½	5	6	5	5
5	6	8	6	7	6	6
6	7	8	7	7	7	7
7	8	8	8	8	8	8
8	8	8	8	8	8	8
9	9	9	9	9	9	9
10	10	10	10	10	10	10
11	11	11	11	11	11	11
12	12	12	12	12	12	12

TYPICAL THICKNESSES



DETAIL A
(typ. inlet end)

DETAIL B
(typ. outlet end)

Note: Inlet and Outlet ends shall be compatible.

GENERAL NOTE:
Minimum cover for box culverts shall be 3".

PRECAST CONCRETE BOX SECTION
STRUCTURE NO. 027-2551

DESIGNED -	MFB
CHECKED -	JDC
DRAWN -	JDC
CHECKED -	MFB

benesch

alfred benesch & company
Engineers • Surveyors • Planners
205 North Michigan Avenue, Suite 2400
Chicago, Illinois 60601
312-565-0450
Job # 3938.02

SHEET NO. S2	F.A.P. RTE.	SECTION	COUNTY	TOTAL SHEETS	SHEET NO.
	796	104 I & 105 BR-1	FORD	51	38
SHEETS S7	CONTRACT NO. 66848				
FED. ROAD DIST. NO.		ILLINOIS FED. AID PROJECT			