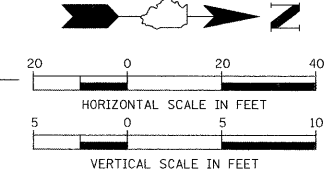
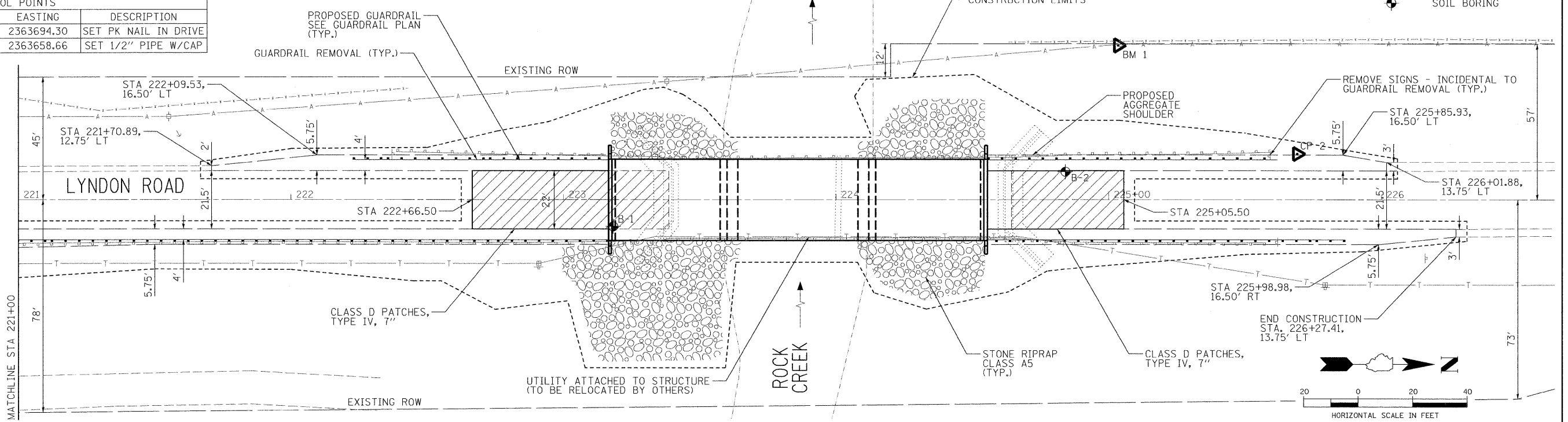


BENCHMARK				
BENCHMARK	STATION	OFFSET	DESCRIPTION	ELEVATION
BM 1	225+03.47	56.4' LT	SPIKE IN POWERPOLE, NORTHWEST OF BRIDGE.	641.237

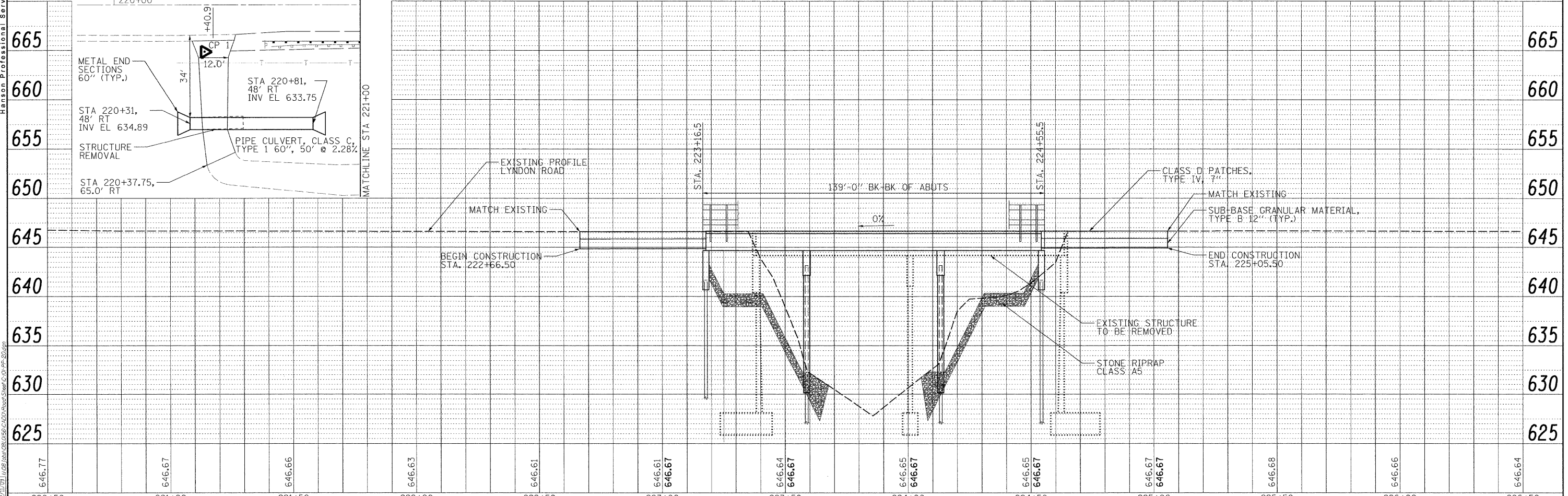
ALIGNMENT DATA		
ALIGNMENT STA	NORTHING	EASTING
STA 220+00	1891937.04	2363675.35
STA 227+00	1892637.04	2363675.63

CONTROL POINTS			
POINT	NORTHING	EASTING	DESCRIPTION
CP 1	1891972.91	2363694.30	SET PK NAIL IN DRIVE
CP 2	1892506.21	2363658.66	SET 1/2" PIPE W/CAP

LEGEND	
	PAVEMENT REMOVAL
	SOIL BORING



HANSON
Hanson Professional Services Inc.



FILE NAME: C:\101-PP-28.dgn	USER NAME: Hussu00411	DESIGNED: DPA	REVISIONS:	STATE OF ILLINOIS DEPARTMENT OF TRANSPORTATION	PLAN AND PROFILE LYNDON ROAD BRIDGE	F.A.S. RTE.: 76	SECTION: 06-00183-00-BR	COUNTY: WHITESIDE	TOTAL SHEETS: 21	SHEET NO.: 5
PLOT SCALE: = 20.0000' / 1"	CHECKED: DPA	DATE: 12/11/09	SCALE: SHEET NO. 5 OF 21 SHEETS STA. 220+00 TO STA. 227+00			CONTRACT NO. 85506				
PLOT DATE: = 12/10/2009	DATE: 12/11/09					ILLINOIS FED. AID PROJECT				