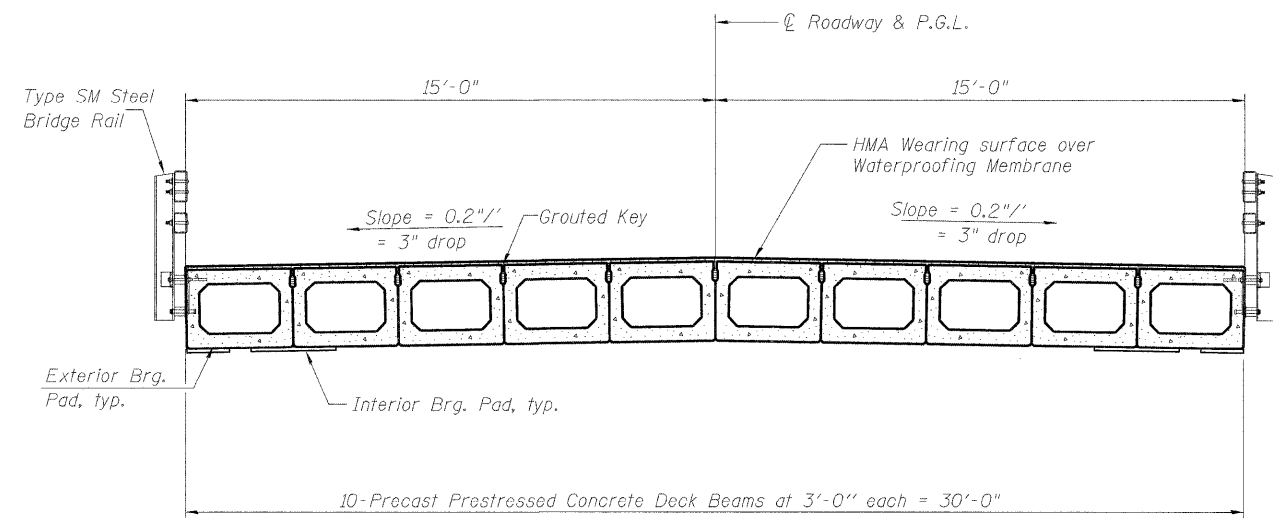
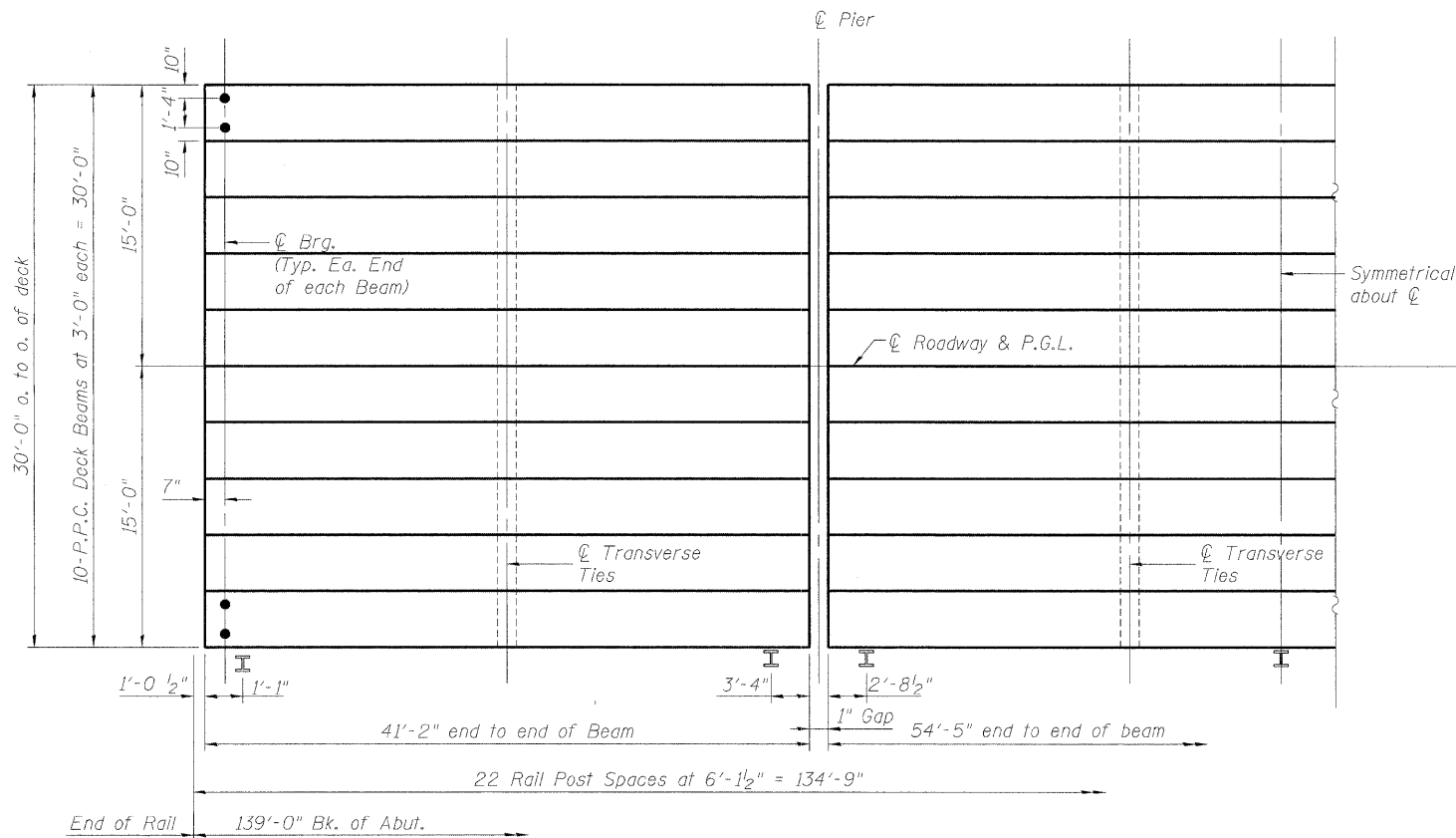


ELEVATION



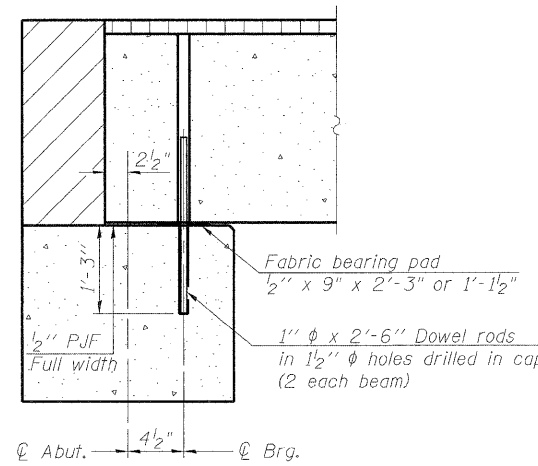
CROSS SECTION



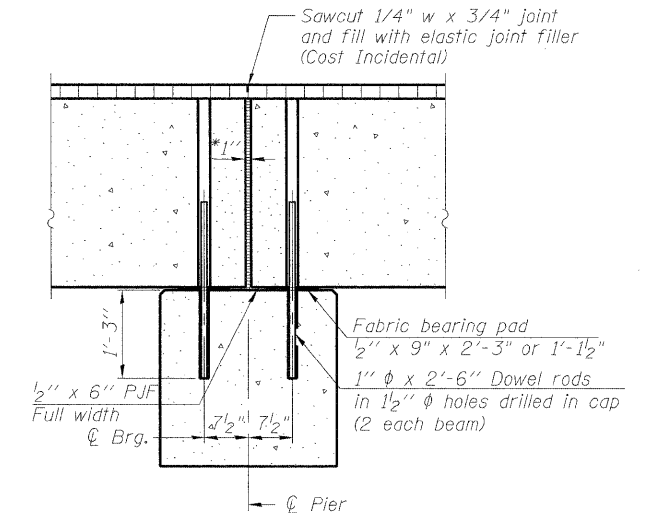
PLAN

NOTES

After beams have been erected, holes shall be drill into substructure and anchor dowels placed. Dowel holes shall be filled with non-shrink grout to top of beam and allowed to cure min. 24 hours prior to grouting the shear keys. Longitudinal keys shall be grouted. The bearing seat surfaces shall be adjusted by shimming to assure firm and even bearing. See sheet 6 of 11 for bearing pad details. Hatched area to be poured after deck beams are in place, and will be paid for as Concrete Structures.



SECTION THRU ABUTMENT



SECTION THRU FIXED PIER

* 1" Jt. shall be filled with non-shrink grout. 1" dimension may vary to accommodate tolerance in beam lengths.

12/10/2009
 I:\08\jobs\081006\CADD\Struct\Sheet\5-003-super\structural.dgn
 LAYOUT: SMK 09/11/09
 DRAWN: JDM 12/11/09
 REVIEWED: SMK 12/11/09

Corporate License Number 184-001-084
 © Copyright Hanson Professional Services Inc. 2009
HANSON

PCC DECK BEAM SUPERSTRUCTURE					
LYNDON ROAD BRIDGE OVER ROCK CREEK F.A.S. ROUTE 76 SECTION 06-00183-00-BR WHITESIDE COUNTY, ILLINOIS STRUCTURE NUMBER 098-3077 STATION 223+86.00					
FILE NO. 08L0156	F.A.S. ROUTE 76	SECTION 06-00183-00-BR	COUNTY Whiteside	TOTAL SHEETS 21	SHEET NO. 10
DATE 12/11/09	SHEET NO. 3 11 SHEETS	CONTRACT NO. 85506		FED. ROAD DIST. NO. 2 ILLINOIS FED. AID PROJECT	