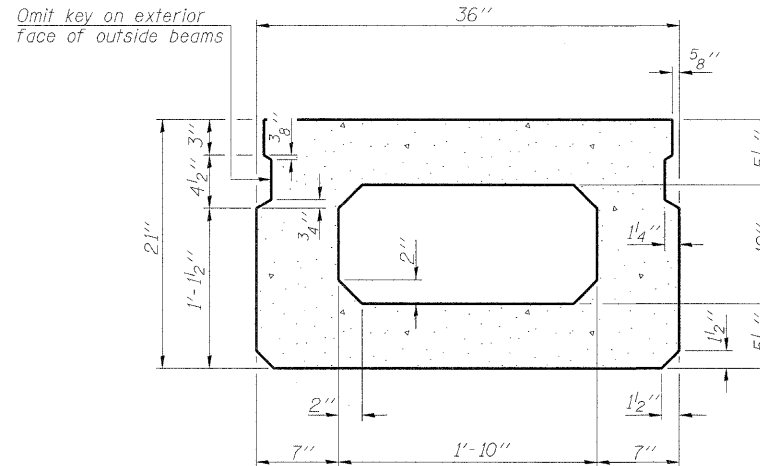
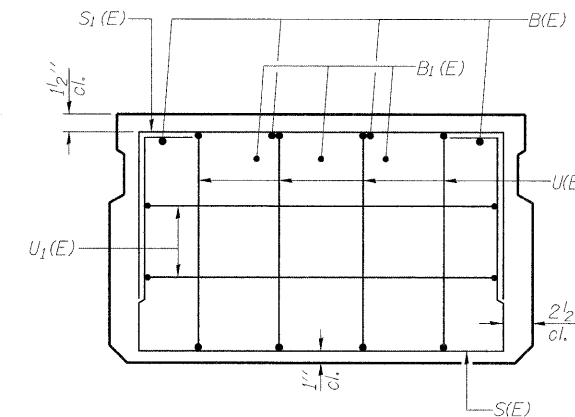


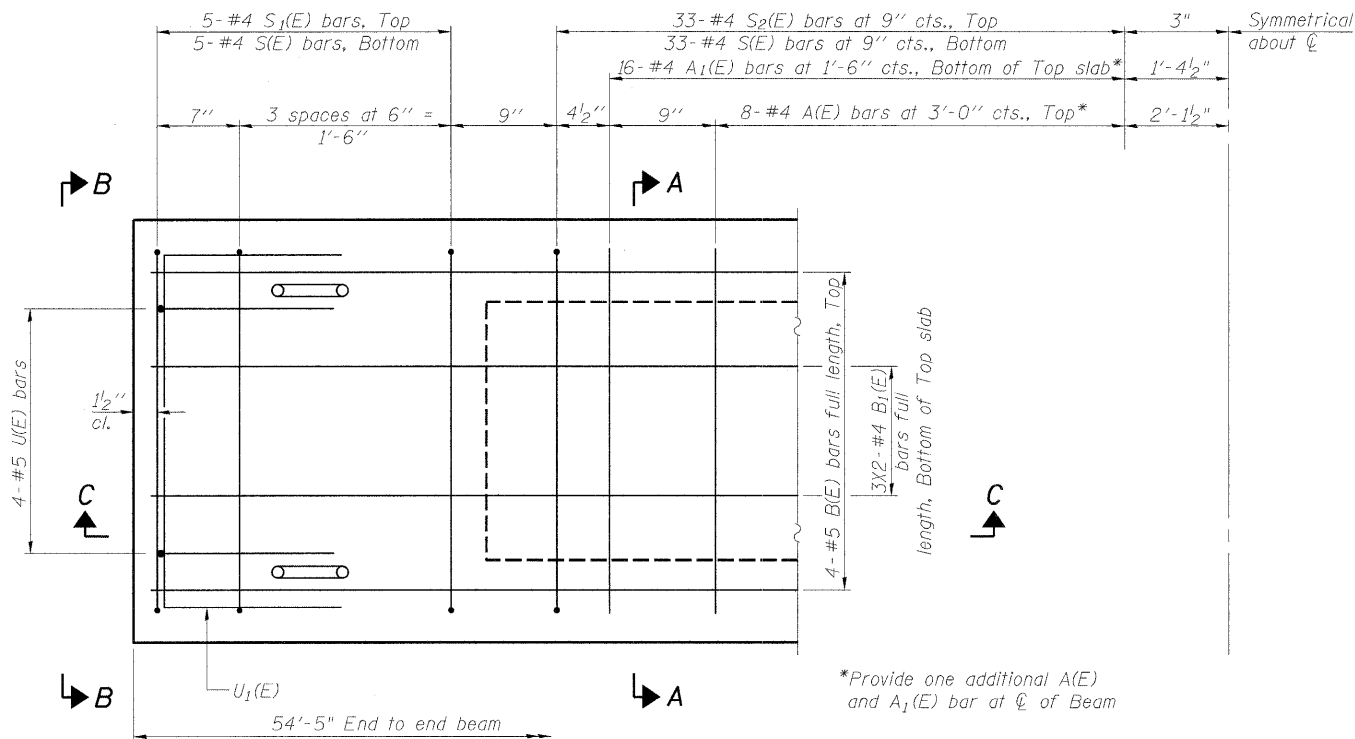
SECTION C-C



SECTION A-A
(Showing dimensions)

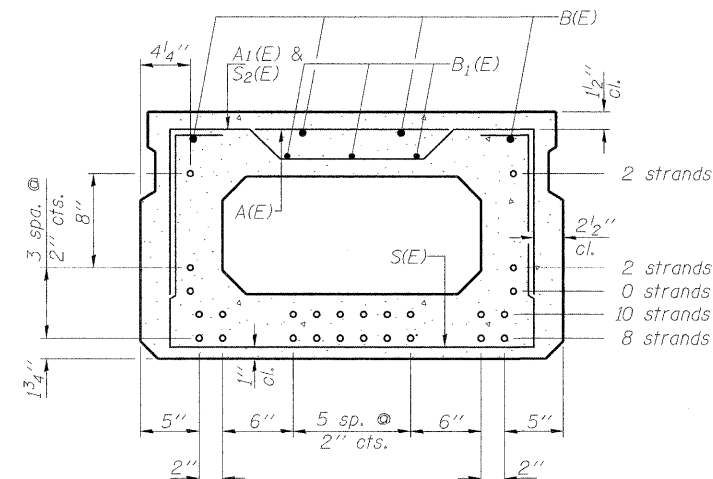


VIEW B-B



PLAN VIEW

Note: Spacing of S(E) and S₂(E) bars may be adjusted up to 4" in the immediate area of the transverse tie diaphragms to miss the block outs for the transverse ties.



SECTION A-A
(Showing reinforcement and permissible strand locations)

Note: Place the number of strands specified in each row symmetrically about the centerline of beam in the permissible strand locations shown.

**BAR LIST
ONE BEAM ONLY**

(For information only)

Bar	No.	Size	Length	Shape
A(E)	17	#4	2'-7"	—
A ₁ (E)	33	#4	2'-10"	~
B(E)	4	#5	54'-1"	—
B ₁ (E)	6	#4	28'-0"	—
S(E)	76	#4	6'-5"	□
S ₁ (E)	10	#4	4'-11"	□
S ₂ (E)	66	#4	5'-2"	□
U(E)	8	#5	4'-0"	□
U ₁ (E)	4	#4	5'-0"	□

Note: See sheet 6 of 11 for additional details and Bill of Material.

PPC DECK BEAM - SPAN 2

LYNDON ROAD BRIDGE
OVER ROCK CREEK
F.A.S. ROUTE 76
SECTION 06-00183-00-BR
WHITESIDE COUNTY, ILLINOIS
STRUCTURE NUMBER 098-3077
STATION 223+86.00

12/11/09 12/11/09 09/11/09
 SMK JDM SMK
 LAYOUT DRAWN REVIEWED
 12/11/09 12/11/09 09/11/09
 SMK JDM SMK
 LAYOUT DRAWN REVIEWED

SHEET NO. 5 11 SHEETS	F.A.S. ROUTE 76	SECTION 06-00183-00-BR	COUNTY Whiteside	TOTAL SHEETS 21	SHEET NO. 12
				CONTRACT NO. 85506	
<small>FED. ROAD DIST. NO. 2 ILLINOIS FED. AID PROJECT</small>					