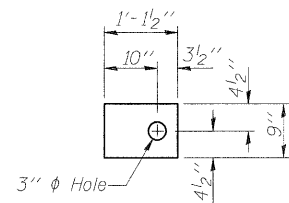


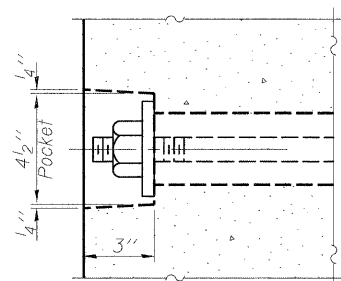
FABRIC BEARING PAD
(Interior)



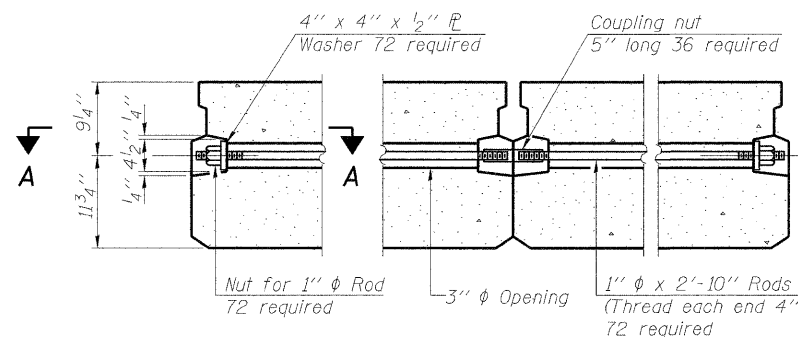
FABRIC BEARING PAD
(Exterior)

FIXED

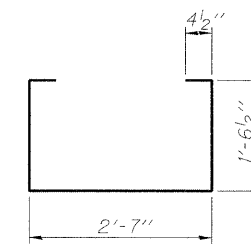
Note: Omit holes when using expansion bearings.



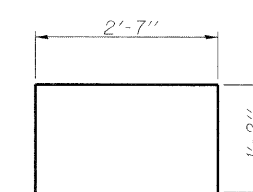
SECTION A-A



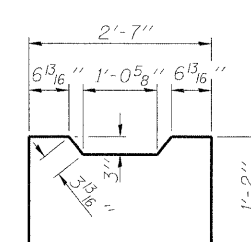
TYPICAL TRANSVERSE TIE ASSEMBLY



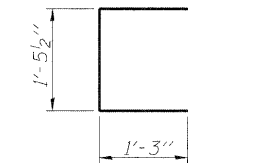
BAR S(E)



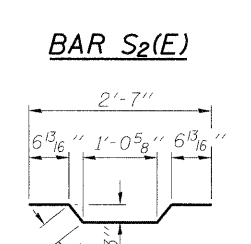
BAR S1(E)



BAR S2(E)

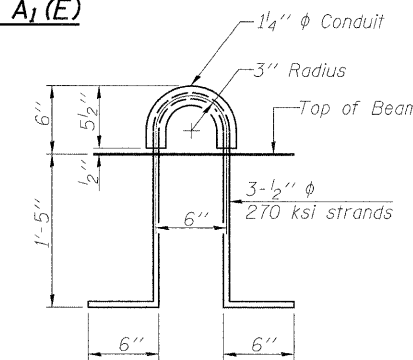


BAR U(E)

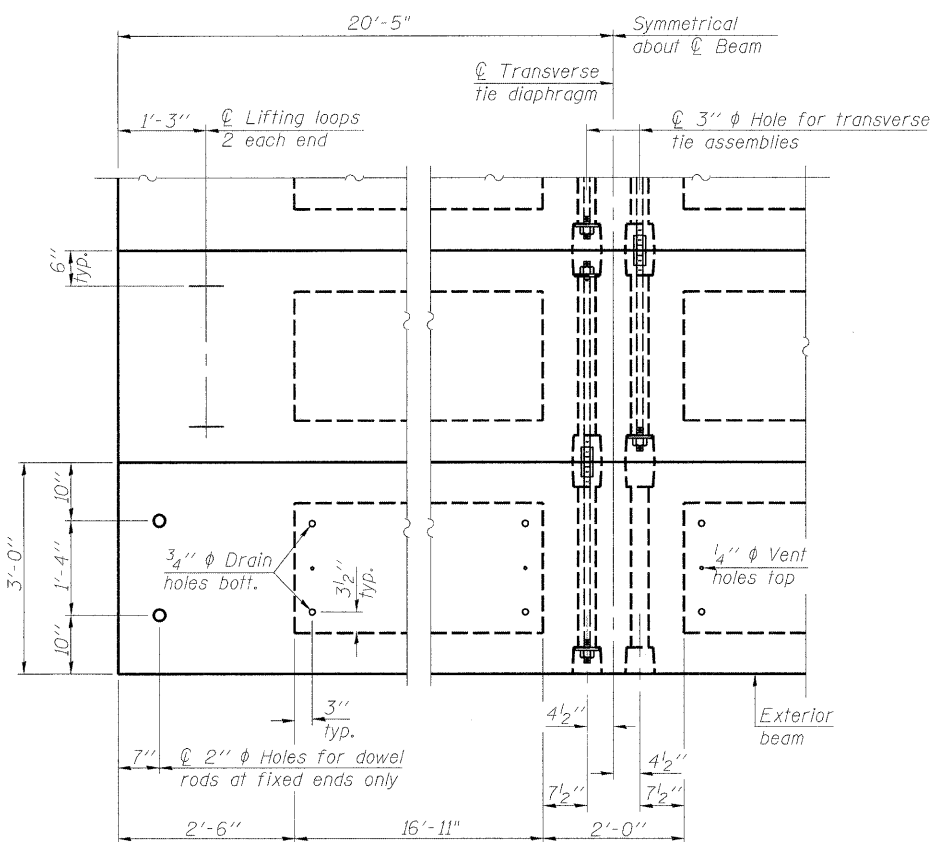


BAR U1(E)

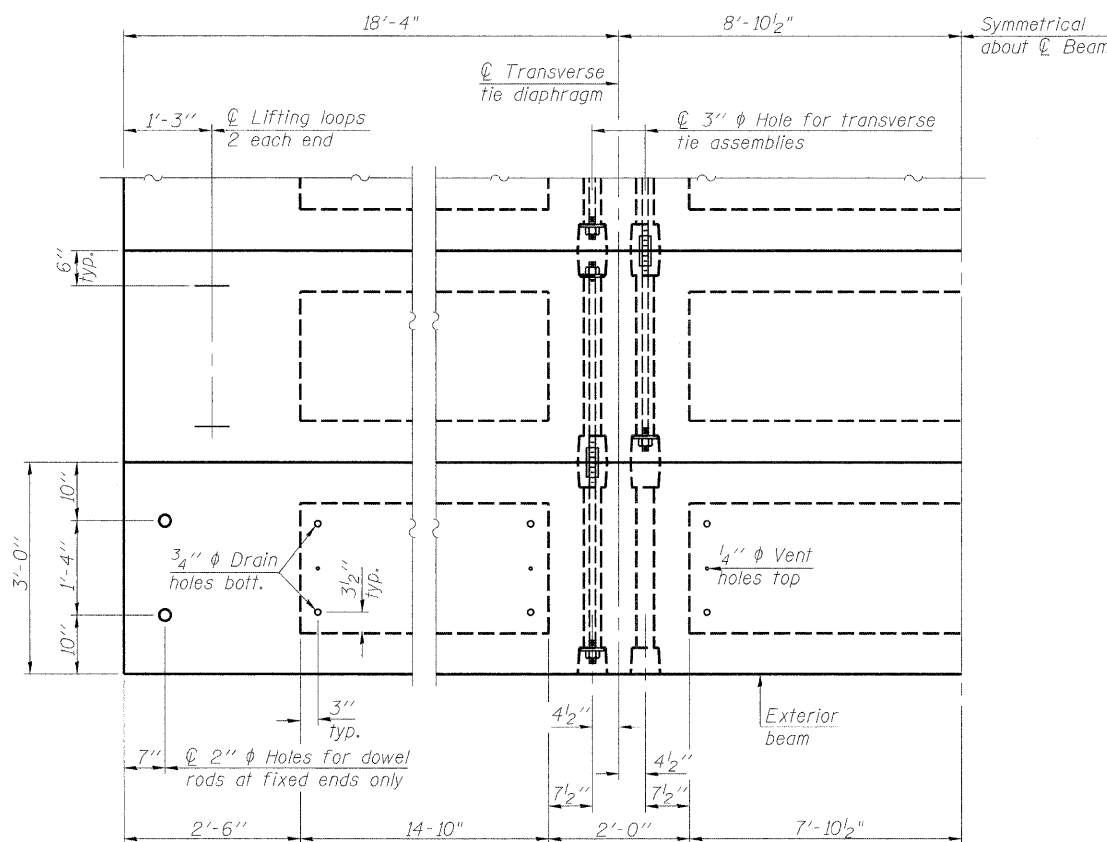
BAR A1(E)



LIFTING LOOP DETAIL



PLAN VIEW - SPANS 1 & 3



PLAN VIEW - SPAN 2

Note: Connect beams in pairs with the transverse tie configuration shown.

NOTES

- Prestressing steel shall be uncoated high strength, low relaxation 7-wire strand, Grade 270. The nominal diameter shall be 1/2" and the nominal cross-sectional area shall be 0.153 sq. in.
- The 1" diameter rods in the transverse tie assembly shall be tightened to a snug fit and the threads set. Pockets on exterior faces of bridge shall be filled with grout after transverse tie assembly is in place.
- Reinforcement bars shall conform to ASTM A 706, Grade 60. (See Special Provisions).
- Two 1/8" fabric adjusting shims of the dimensions of the exterior bearing pad shall be provided for each bearing pad location.
- A minimum 2 1/2" diameter lifting pin shall be used to engage the lifting loops during handling.
- Corrosion Inhibitor, per Article 1020.05(b)(12) and 1021.06 of the Standard Specifications, shall be used in the concrete for precast prestressed concrete deck beams.
- Compressive strength of prestressed concrete, f'c, shall be 6000 psi.
- Compressive strength of prestressed concrete at release, f'ci, shall be 5000 psi.

BILL OF MATERIAL

Precast Prestressed Conc. Deck Bms. (21" depth)	Sq. Ft. 4102.5
---	----------------

PPC DECK BEAM DETAILS

LYNDON ROAD BRIDGE
OVER ROCK CREEK
F.A.S. ROUTE 76
SECTION 06-00183-00-BR
WHITESIDE COUNTY, ILLINOIS
STRUCTURE NUMBER 098-3077
STATION 223+86.00

08L0156	09/11/09	09/11/09	09/11/09	09/11/09	09/11/09
DATE	DATE	DATE	DATE	DATE	DATE
12/11/09	12/11/09	12/11/09	12/11/09	12/11/09	12/11/09
SHEET NO. 6			TOTAL SHEETS 13		
11 SHEETS			CONTRACT NO. 85506		
FED. ROAD DIST. NO. 2 ILLINOIS FED. AID PROJECT					



12/10/2009
 I:\08\09\08\0156\CADD\Struct\Sheet\AS-006-PPC Deck Beam Details.dgn
 LAYOUT SMK 09/11/09
 DRAWN JMM 12/11/09
 REVIEWED SMK 12/11/09