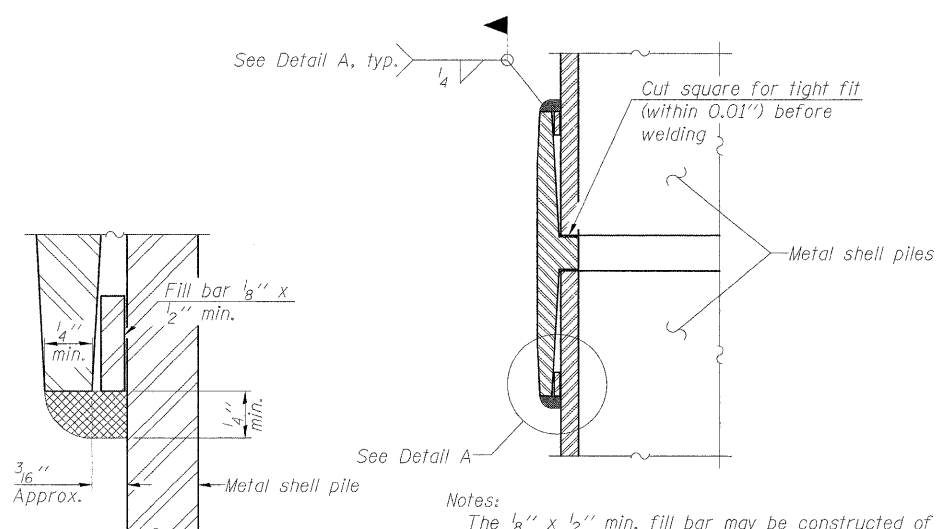


**METAL SHELL PILE TABLE**

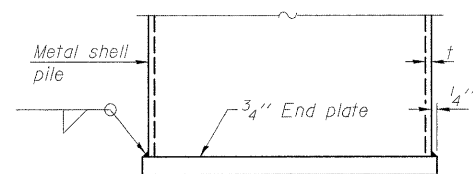
Designation and outside diameter	Wall thickness t	Weight per foot (Lbs./ft.)	Inside volume (yd. <sup>3</sup> /ft.)
PP12	0.179"	22.60	0.0274
PP12	0.250"	31.37	0.0267
PP14	0.250"	36.71	0.0368
PP14	0.312"	45.61	0.0361



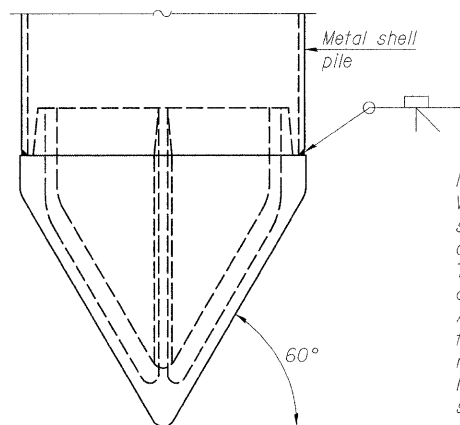
**DETAIL A**

Notes:  
 The 1/8" x 1/2" min. fill bar may be constructed of 2 bars with a 1/8" max. gap between them.  
 Pile segments shall be driven to solid contact with splicer before welding.

**WELDED COMMERCIAL SPLICE**



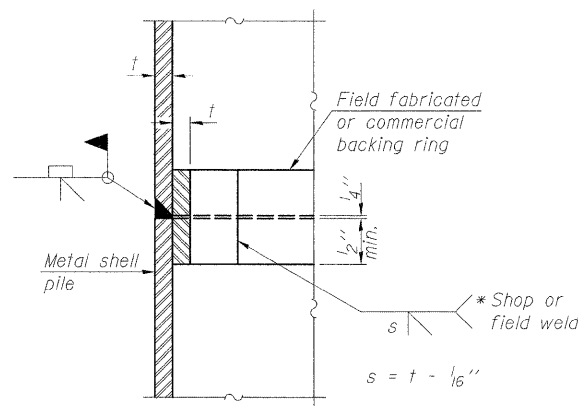
**END PLATE ATTACHMENT**



**METAL SHELL PILE SHOE ATTACHMENT**

(See Note A)

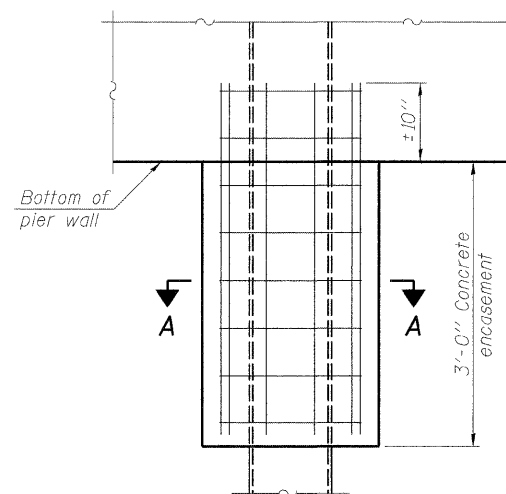
Note A:  
 When called for on the plans, the Contractor shall furnish metal shell pile shoes consisting of a single piece conical pile point as shown. The pile shoes shall be cast in one piece steel according to either ASTM A 148 Grade 90-60 or AASHTO M 103 Grade 65-35 and shall provide full bearing over the full circumference of the metal shell pile. The pile shoe shall have tapered leads to assure proper alignment and fitting and shall be secured to the pile with a circumferential weld.



**COMPLETE PENETRATION WELD SPLICE**

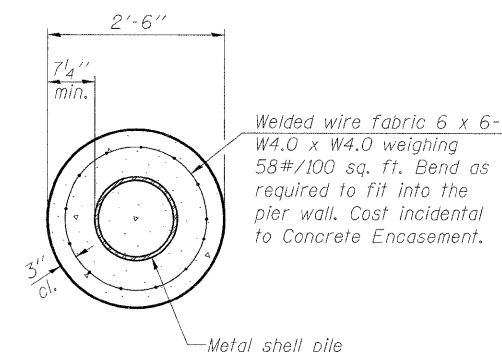
\* Field fabricated backing ring may be made from pile shell by removing segment to allow reducing circumference and vertically rejoin with partial joint penetration weld.

Note:  
 The metal shell piles shall be according to ASTM A 252 Grade 3.



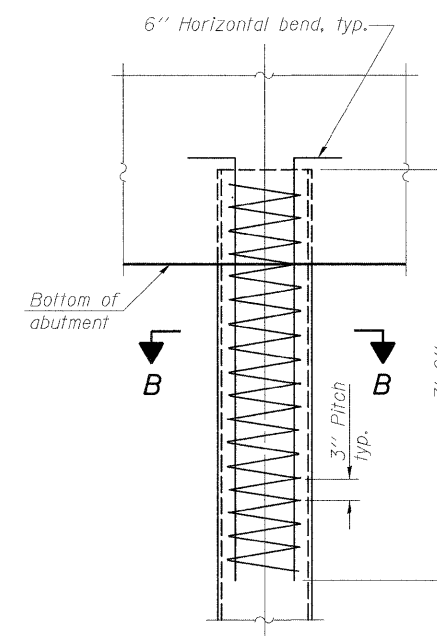
**ELEVATION**

**CONCRETE ENCASEMENT AT PIERS**



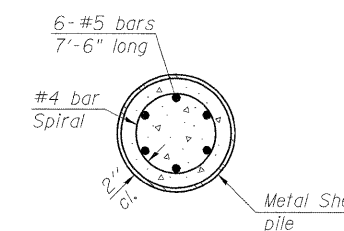
**SECTION A-A**

Note:  
 Forms for encasement may be omitted when soil conditions permit.



**ELEVATION**

**METAL SHELL REINFORCEMENT AT ABUTMENTS**



**SECTION B-B**

**CONCRETE PILE DETAILS**

LYNDON ROAD BRIDGE  
 OVER ROCK CREEK  
 F.A.S. ROUTE 76  
 SECTION 06-00183-00-BR  
 WHITESIDE COUNTY, ILLINOIS  
 STRUCTURE NUMBER 098-3077  
 STATION 223+86.00

12/10/2009  
 I:\09\proj\08\081065\CADD\Struct\Sheet\S-010-F10-Details.dgn  
 LAYOUT SHK 09/11/09  
 DRAWN JDM 12/11/09  
 REVIEWED SHK 12/11/09

JOB NO. 08L0156 DATE 12/11/09	Corporate License Number 184-001-084 © Copyright Hanson Professional Services Inc. 2009 	SHEET NO. 10 11 SHEETS	F.A.S. ROUTE 76	SECTION 06-00183-00-BR	COUNTY Whiteside	TOTAL SHEETS 21	SHEET NO. 17
FED. ROAD DIST. NO. 2 ILLINOIS FED. AID PROJECT							