

SUMMARY OF QUANTITIES

NOM.	SP. PROV.	CODE NUMBER	ITEM	UNIT	TOTAL QUANTITY	WOODWARD AVE. CONSTR CODE 0005 STU 70/30	WOODWARD AVE. CONSTR CODE 0021 STU 70/30
Δ *		20101200	TREE ROOT PRUNING	EACH	10	10	
	Δ	20101400	NITROGEN FERTILIZER NUTRIENT	POUND	14	14	
*	CS	20201200	REMOVAL AND DISPOSAL OF UNSUITABLE MATERIAL	CU YD	25	25	
	Δ	20101500	PHOSPHORUS FERTILIZER NUTRIENT	POUND	14	14	
		21101615	TOPSOIL FURNISH AND PLACE, 4"	SQ YD	700	700	
	Δ	20101600	POTASSIUM FERTILIZER NUTRIENT	POUND	14	14	
		25200110	SODDING, SALT TOLERANT	SQ YD	700	700	
*		25200200	SUPPLEMENTAL WATERING	UNIT	20	20	
		25000210	SEEDING, CLASS 2A	ACRE	0.15	0.15	
		28000510	INLET FILTERS	EACH	47	47	
	Δ	25100630	EROSION CONTROL BLANKET	SQ YD	700	700	
*		30300112	AGGREGATE SUBGRADE IMPROVEMENT 12"	SQ YD	50	50	
	CS	40600290	BITUMINOUS MATERIALS (TACK COAT)	POUND	22,129	22129	
*		40600400	MIXTURE FOR CRACKS, JOINTS, AND FLANGEWAYS	TON	16	16	
		40600982	HOT-MIX ASPHALT SURFACE REMOVAL - BUTT JOINT	SQ YD	194	194	
		40603200	POLYMERIZED HOT-MIX ASPHALT BINDER COURSE, IL-4.75, N50	TON	1,377	1377	
		40604062	HOT-MIX ASPHALT SURFACE COURSE, IL-9.5, MIX "D", N70	TON	3,672	3672	
		44000159	HOT-MIX ASPHALT SURFACE REMOVAL, 2-1/2"	SQ YD	32,784	32784	
	CS	44000500	COMBINATION CURB AND GUTTER REMOVAL	FOOT	1,550	1550	
		44000600	SIDEWALK REMOVAL	SQ FT	8,550	8550	
*		44201737	CLASS D PATCHES, TYPE I, 8 INCH	SQ YD	164	164	

SUMMARY OF QUANTITIES

NOM.	SP. PROV.	CODE NUMBER	ITEM	UNIT	TOTAL QUANTITY	WOODWARD AVE. CONSTR CODE 0005 STU 70/30	WOODWARD AVE. CONSTR CODE 0021 STU 70/30
*		44201741	CLASS D PATCHES, TYPE II, 8 INCH	SQ YD	164	164	
*		44201745	CLASS D PATCHES, TYPE III, 8 INCH	SQ YD	164	164	
*		44201747	CLASS D PATCHES, TYPE IV, 8 INCH	SQ YD	328	328	
		60251500	CATCH BASINS TO BE ADJUSTED WITH NEW TYPE 11 FRAME AND GRATE	EACH	27	27	
		60300305	FRAMES AND LIDS TO BE ADJUSTED	EACH	5	5	
		60406100	FRAMES AND LIDS, TYPE 1, CLOSED LID	EACH	10	10	
	CS	60603800	COMBINATION CURB AND GUTTER, TYPE B-6.12	FOOT	1,550	1550	
Δ *		66900200	NON-SPECIAL WASTE DISPOSAL	CU YD	10	10	
Δ		66900530	SOIL DISPOSAL ANALYSIS	EACH	1	1	
		67100100	MOBILIZATION	L SUM	1	1	
		70102620	TRAFFIC CONTROL AND PROTECTION, STANDARD 701501	L SUM	1	1	
		70102632	TRAFFIC CONTROL AND PROTECTION, STANDARD 701602	L SUM	1	1	
		70102625	TRAFFIC CONTROL AND PROTECTION, STANDARD 701606	L SUM	1	1	
		70102635	TRAFFIC CONTROL AND PROTECTION, STANDARD 701701	L SUM	1	1	
		70102640	TRAFFIC CONTROL AND PROTECTION, STANDARD 701801	L SUM	1	1	
		70107025	CHANGEABLE MESSAGE SIGN	CAL DAY	60	60	

Δ SPECIALTY ITEMS

FILE NAME = 03 SD 01.dgn



USER NAME = DonN	DESIGNED -	REVISED - Δ 02/24/2020
	DRAWN -	REVISED -
PLOT SCALE = 48.0000' / in.	CHECKED -	REVISED -
PLOT DATE = 12/16/2019	DATE -	REVISED -

STATE OF ILLINOIS
DEPARTMENT OF TRANSPORTATION

SUMMARY OF QUANTITIES

SCALE: SHEET OF SHEETS STA. TO STA.

F.A.U. RTE.	SECTION	COUNTY	TOTAL SHEETS	SHEET NO.
2593	19-00082-00-RS	DUPAGE	39	3
CONTRACT NO. 61G27			ILLINOIS FED. AID PROJECT	



PR. THERMOPLASTIC PAVEMENT MARKINGS- LINE 12" STOP LINE, WHITE (TYP)

PROJECT BEGINS STA. 11+26

PR. THERMOPLASTIC PAVEMENT MARKINGS- LINE 6" TURN LANE LINE, WHITE (TYP)

PR. THERMOPLASTIC PAVEMENT MARKINGS- LINE 4" SKIP DASH, 30' SKIP- 10' DASH, WHITE (TYP)

PR. THERMOPLASTIC PAVEMENT MARKINGS LETTERS AND SYMBOLS, WHITE (TYP)

PR. THERMOPLASTIC PAVEMENT MARKINGS- LINE 6" DOTTED LINE, WHITE (TYP)

110+00

11

12

WOODWARD AVENUE

13

14

MATCHLINE STA. 15+00

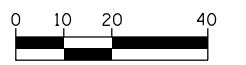
75TH STREET

PR. THERMOPLASTIC PAVEMENT MARKINGS- LINE 4" SKIP DASH, 30' SKIP- 10' DASH, WHITE (TYP)

PR. THERMOPLASTIC PAVEMENT MARKINGS- LINE 4" EDGE LINE, YELLOW (TYP)



PR. THERMOPLASTIC PAVEMENT MARKINGS- LINE 4" DOUBLE LINE, 11" C-C, YELLOW (TYPICAL)

PR. THERMOPLASTIC PAVEMENT MARKINGS- LINE 12" DIAGONAL MEDIAN LINE, YELLOW (TYP)



HORIZONTAL SCALE IN FEET

LEGEND

-  INLET FILTERS
-  SEEDING, CLASS 2A, TOPSOIL FURNISH AND PLACE, 4" AND EROSION CONTROL BLANKET



PR. THERMOPLASTIC PAVEMENT MARKINGS- LINE 4" SKIP DASH, 30' SKIP- 10' DASH, WHITE (TYP)

PR. THERMOPLASTIC PAVEMENT MARKINGS LETTERS AND SYMBOLS, WHITE (TYP)

PR. THERMOPLASTIC PAVEMENT MARKINGS- LINE 6" DOTTED LINE, WHITE (TYP)

MATCHLINE STA. 15+00

15+00

16

WOODWARD AVENUE

17

18

19

20+00

MATCHLINE STA. 21+00

PR. THERMOPLASTIC PAVEMENT MARKINGS- LINE 4" DOUBLE LINE, 11" C-C, YELLOW (TYPICAL)

PR. THERMOPLASTIC PAVEMENT MARKINGS- LINE 4" SKIP DASH, 30' SKIP- 10' DASH, WHITE (TYP)

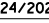
PR. THERMOPLASTIC PAVEMENT MARKINGS- LINE 6" TURN LANE LINE, WHITE (TYP)



HORIZONTAL SCALE IN FEET

FILE NAME = 20 PMLand Plans 01.dgn



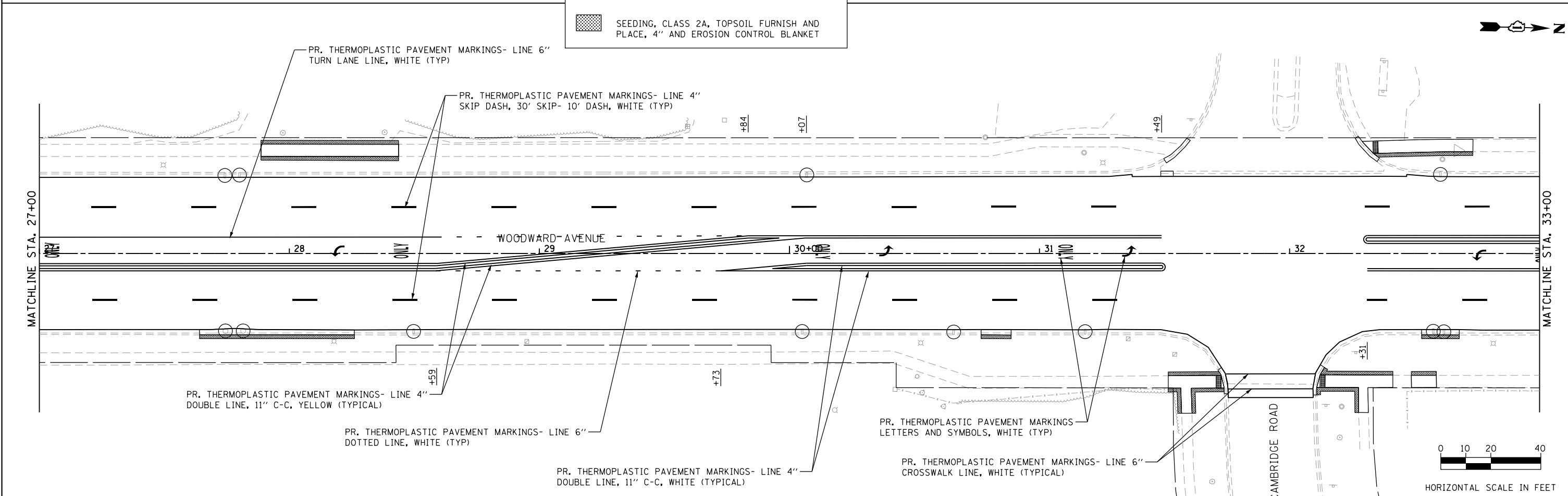
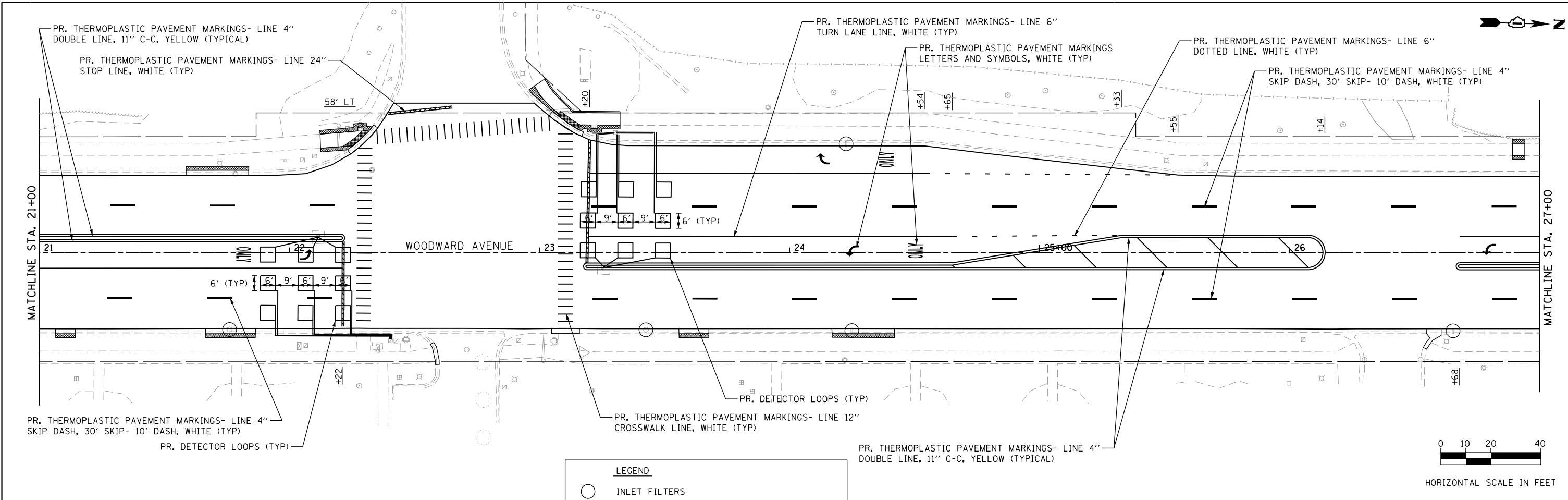
USER NAME = DonN	DESIGNED -	REVISED -  02/24/2020
	DRAWN -	REVISED -
PLOT SCALE = 40.0000' / in.	CHECKED -	REVISED -
PLOT DATE = 2/24/2020	DATE -	REVISED -

STATE OF ILLINOIS
DEPARTMENT OF TRANSPORTATION

**WOODWARD AVENUE
PROPOSED PAVEMENT MARKING, EROSION CONTROL
AND LANDSCAPING PLANS**

SCALE: SHEET OF SHEETS STA. TO STA.

F.A.U. RTE. 2593	SECTION 19-00082-00-RS	COUNTY DUPAGE	TOTAL SHEETS 39	SHEET NO. 20
CONTRACT NO. 61G27				ILLINOIS FED. AID PROJECT



FILE NAME = 21 PM_Land Plans 02.dgn

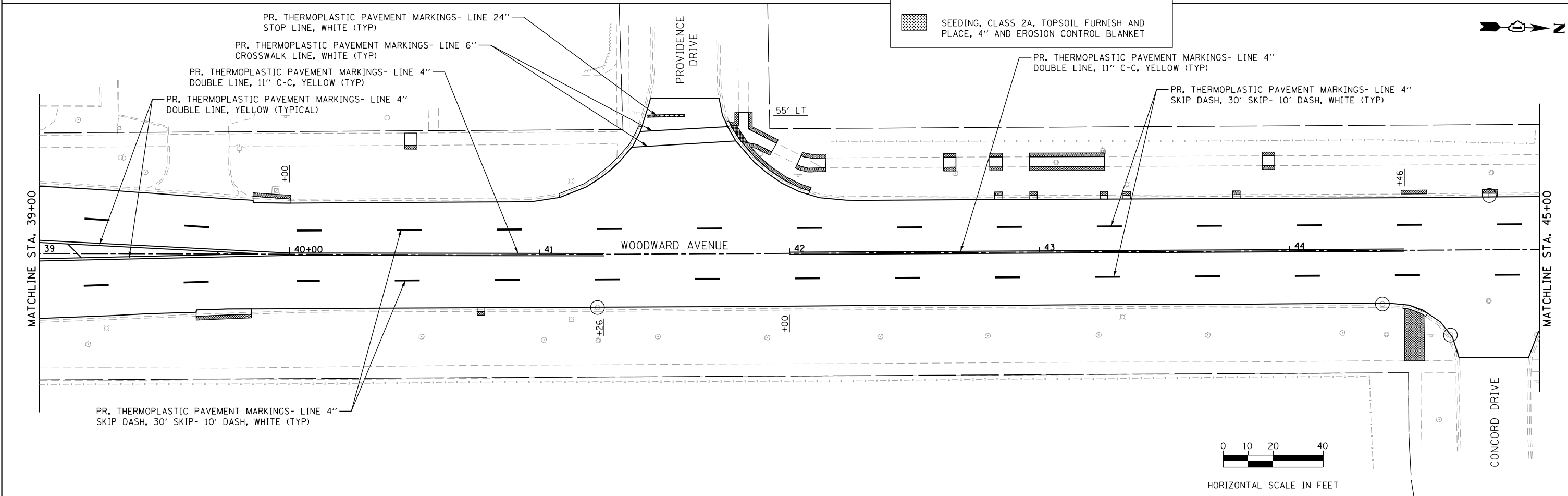
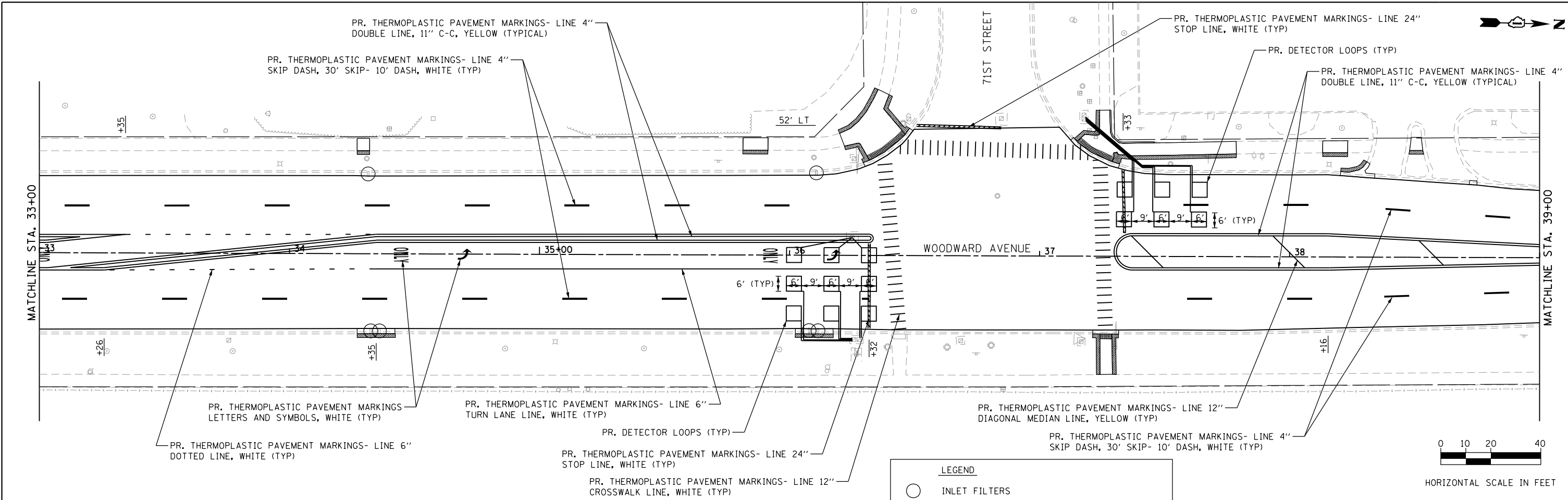
	USER NAME = DonN	DESIGNED -	REVISED - Δ 02/24/2020
		DRAWN -	REVISED -
	PLOT SCALE = 40.0000' / in.	CHECKED -	REVISED -
	PLOT DATE = 2/24/2020	DATE -	REVISED -

STATE OF ILLINOIS
DEPARTMENT OF TRANSPORTATION

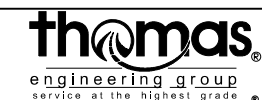
WOODWARD AVENUE
PROPOSED PAVEMENT MARKING, EROSION CONTROL
AND LANDSCAPING PLANS

SCALE: SHEET OF SHEETS STA. TO STA.

F.A.U. RTE.	SECTION	COUNTY	TOTAL SHEETS	SHEET NO.
2593	19-00082-00-RS	DUPAGE	39	21
CONTRACT NO. 61G27				
ILLINOIS FED. AID PROJECT				



FILE NAME = 22 PMLand Plans 03.dgn



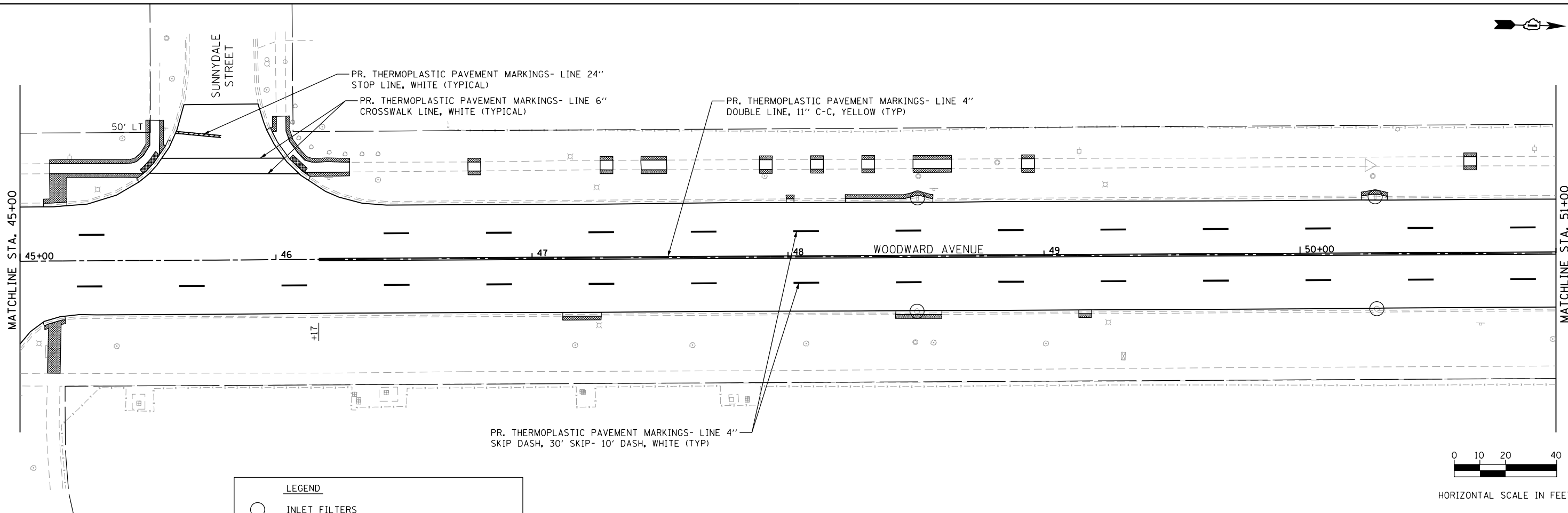
USER NAME = DonN	DESIGNED -	REVISED -	02/24/2020
	DRAWN -	REVISED -	
PLOT SCALE = 40.0000' / in.	CHECKED -	REVISED -	
PLOT DATE = 2/24/2020	DATE -	REVISED -	

STATE OF ILLINOIS
DEPARTMENT OF TRANSPORTATION



WOODWARD AVENUE
PROPOSED PAVEMENT MARKING, EROSION CONTROL
AND LANDSCAPING PLANS

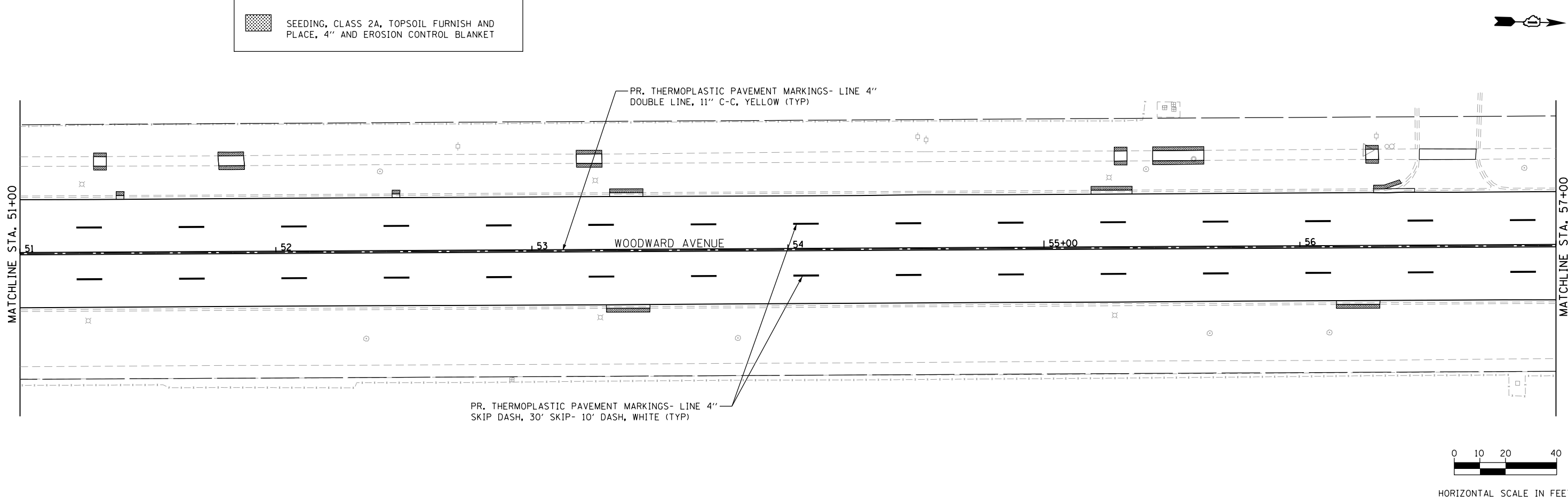
SCALE:	SHEET	OF	SHEETS	STA.	TO	STA.
--------	-------	----	--------	------	----	------

F.A.U. RTE.	SECTION	COUNTY	TOTAL SHEETS	SHEET NO.
2593	19-00082-00-RS	DUPAGE	39	22
CONTRACT NO. 61G27				
ILLINOIS FED. AID PROJECT				


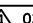


LEGEND

-  INLET FILTERS
-  SEEDING, CLASS 2A, TOPSOIL FURNISH AND PLACE, 4" AND EROSION CONTROL BLANKET



FILE NAME = 23 PM_Land Plans B4.dgn

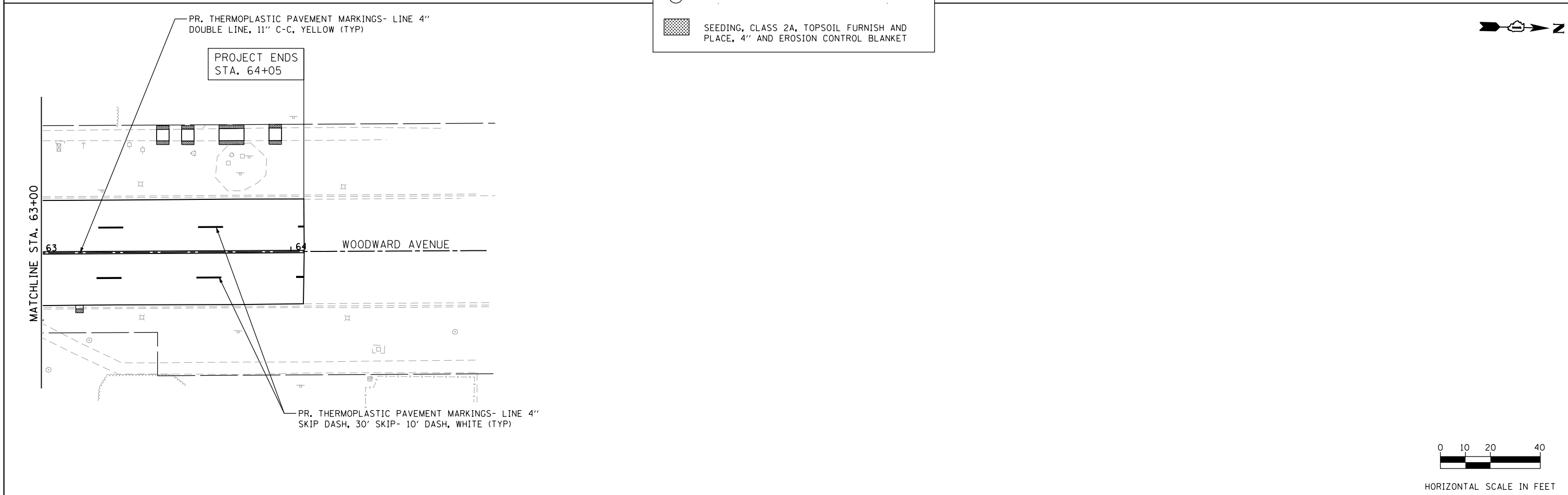
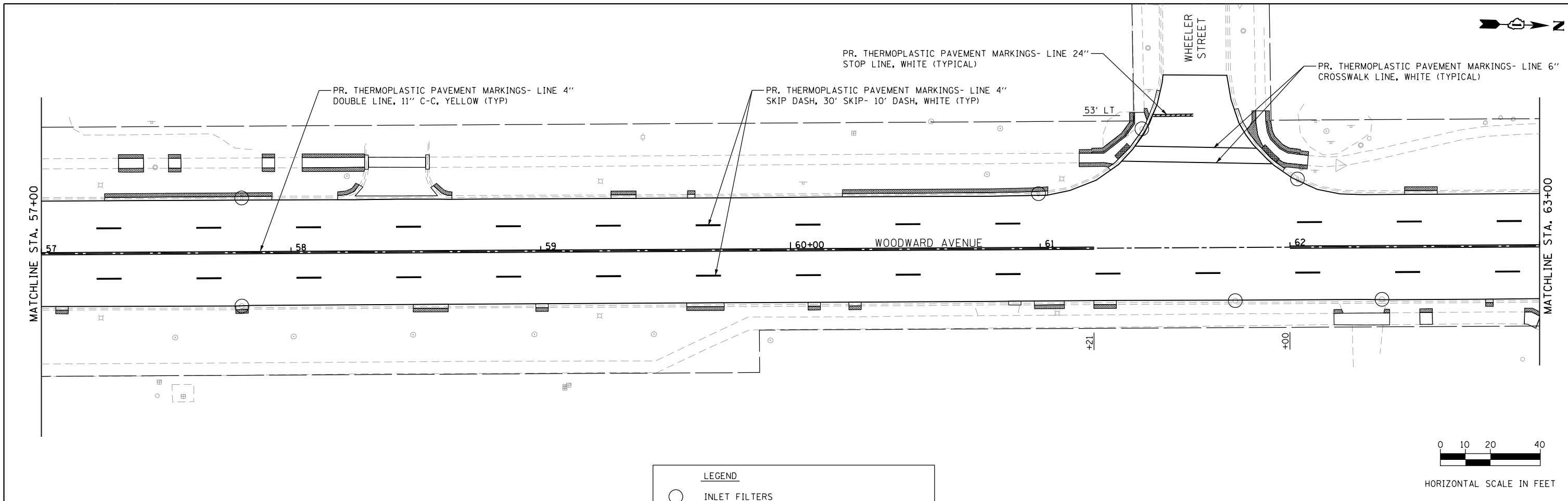
	USER NAME = DonN	DESIGNED -	REVISED -  02/24/2020
	PLOT SCALE = 40.0000' / in.	DRAWN -	REVISED -
	PLOT DATE = 2/24/2020	CHECKED -	REVISED -
		DATE -	REVISED -

**STATE OF ILLINOIS
DEPARTMENT OF TRANSPORTATION**

**WOODWARD AVENUE
PROPOSED PAVEMENT MARKING, EROSION CONTROL
AND LANDSCAPING PLANS**

SCALE: SHEET OF SHEETS STA. TO STA.

F.A.U. RTE. 2593	SECTION 19-00082-00-RS	COUNTY DUPAGE	TOTAL SHEETS 39	SHEET NO. 23
CONTRACT NO. 61G27			ILLINOIS FED. AID PROJECT	



FILE NAME = 24_PMLand Plans 05.dgn



USER NAME = DonN	DESIGNED -	REVISED -	02/24/2020
	DRAWN -	REVISED -	
PLOT SCALE = 40.0000' / in.	CHECKED -	REVISED -	
PLOT DATE = 2/24/2020	DATE -	REVISED -	

STATE OF ILLINOIS
DEPARTMENT OF TRANSPORTATION

**WOODWARD AVENUE
PROPOSED PAVEMENT MARKING, EROSION CONTROL
AND LANDSCAPING PLANS**

SCALE: SHEET OF SHEETS STA. TO STA.

F.A.U. RTE.	SECTION	COUNTY	TOTAL SHEETS	SHEET NO.
2593	19-00082-00-RS	DUPAGE	39	24
CONTRACT NO. 61G27				
ILLINOIS FED. AID PROJECT				