

CONSTRUCTION CODE		
0005	0021	0042
RESURFACING	SAFETY (TRAFFIC SIGNALS)	TRAINEES

SPECIAL PROVISION	SPECIALTY ITEM	CODE NO.	ITEM	UNIT	TOTAL QUANTITY	CONSTRUCTION CODE		
						0005	0021	0042
						RESURFACING	SAFETY (TRAFFIC SIGNALS)	TRAINEES
X		87301255	ELECTRIC CABLE IN CONDUIT, SIGNAL NO. 14 7C	FOOT	208		208	
X		87301900	ELECTRIC CABLE IN CONDUIT, EQUIPMENT GROUNDING CONDUCTOR, NO. 6 1C	FOOT	64		64	
X	X	87702930	STEEL COMBINATION MAST ARM ASSEMBLY AND POLE 40 FT.	EACH	1		1	
X	X	87800415	CONCRETE FOUNDATION, TYPE E 36-INCH DIAMETER	FOOT	13		13	
X		87900200	DRILL EXISTING HANDHOLE	EACH	5		5	
X	X	88030020	SIGNAL HEAD, LED, 1-FACE, 3-SECTION, MAST-ARM MOUNTED	EACH	1		1	
X	X	88200410	TRAFFIC SIGNAL BACKPLATE, LOUVERED, FORMED PLASTIC	EACH	3		3	
X	X	88800100	PEDESTRIAN PUSH-BUTTON	EACH	4		4	
X	X	X8880015	PEDESTRIAN PUSH-BUTTON, NON-LATCHING	EACH	4		4	
X		89500100	RELOCATE EXISTING SIGNAL HEAD	EACH	2		2	
X		89500200	RELOCATE EXISTING PEDESTRIAN SIGNAL HEAD	EACH	1		1	
X		89502200	MODIFY EXISTING CONTROLLER	EACH	2		2	
X		89502300	REMOVE ELECTRIC CABLE FROM CONDUIT	FOOT	630		630	
X		89502350	REMOVE AND REINSTALL ELECTRIC CABLE FROM CONDUIT	FOOT	114		114	
X	X	89502375	REMOVE EXISTING TRAFFIC SIGNAL EQUIPMENT	EACH	2		2	
X	X	89502376	REBUILD EXISTING HANDHOLE	EACH	12		12	
X		89502385	REMOVE EXISTING CONCRETE FOUNDATION	EACH	1		1	



MODEL: S:\MODELS\... FILE NAME: ...

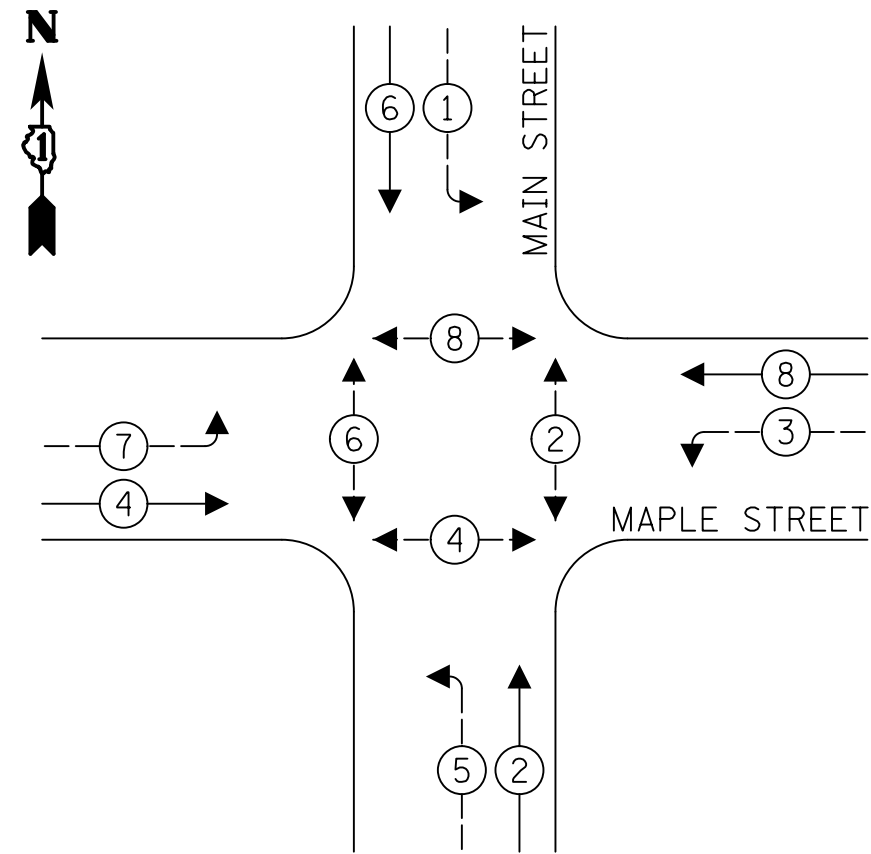
USER NAME = djk	DESIGNED - KDC	REVISED - <u>2/5/2020</u>
	DRAWN - JAB	REVISED -
PLOT SCALE = 1.0000" / 1"	CHECKED - DJK	REVISED -
PLOT DATE = 12/18/2019	DATE - 12/17/2019	REVISED -

**STATE OF ILLINOIS
DEPARTMENT OF TRANSPORTATION**

MAIN STREET SUMMARY OF QUANTITIES		
SCALE:	SHEET 7 OF 10 SHEETS	STA. TO STA.

F.A.J. RTE. 2611	SECTION 19-00161-00-RS	COUNTY DUPAGE	TOTAL SHEETS 67	SHEET NO. 10
CONTRACT NO. 61G29				
ILLINOIS FED. AID PROJECT				

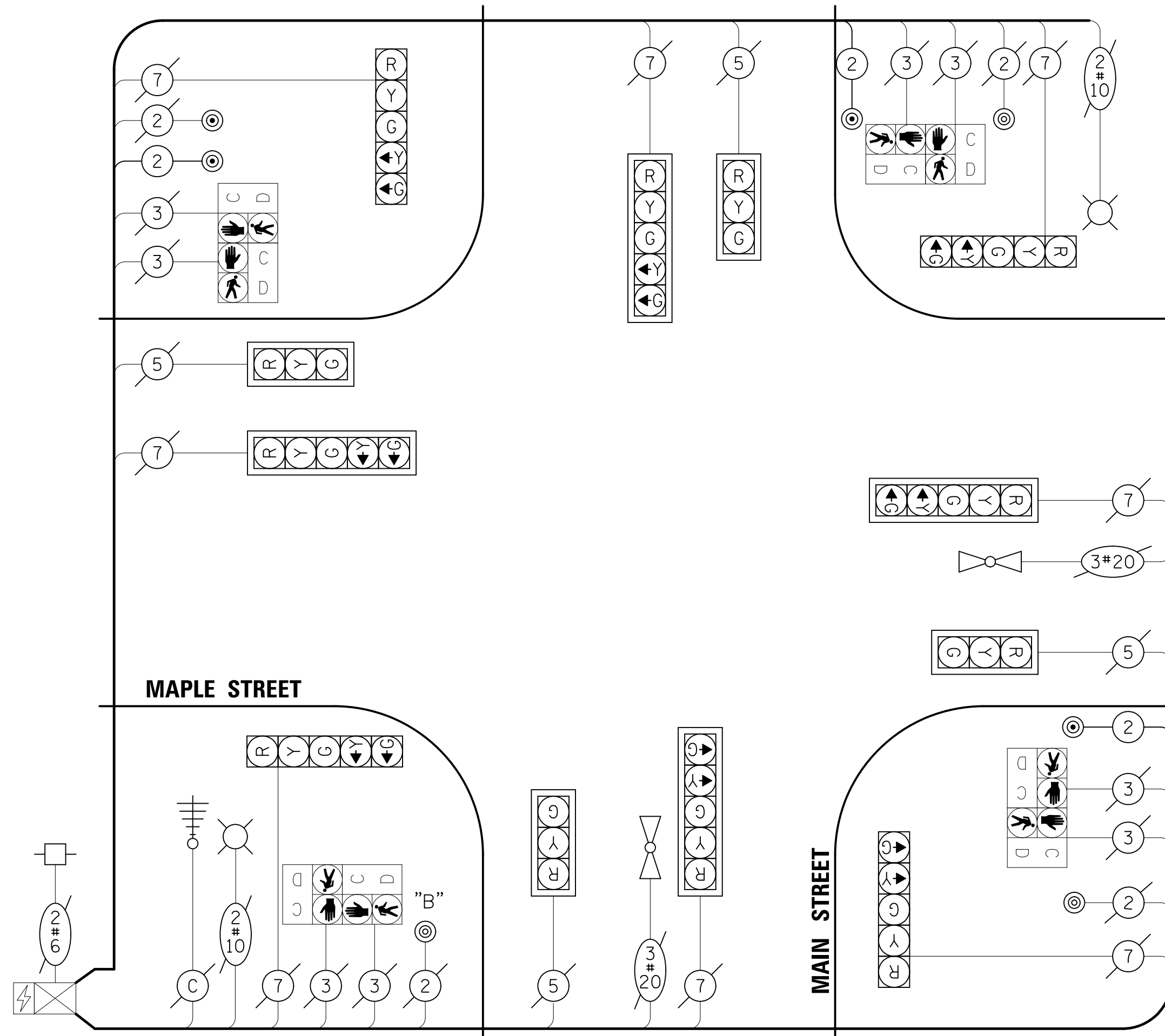
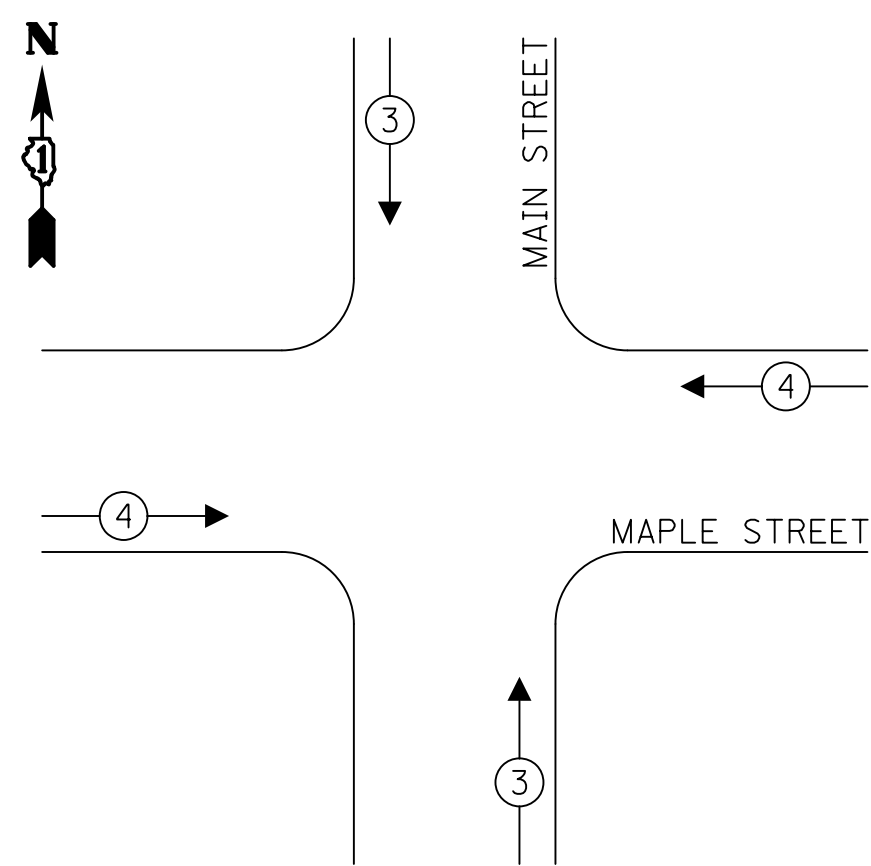
EXISTING AND PROPOSED CONTROLLER SEQUENCE



LEGEND:

- ← * → PROTECTED PHASE
- ← * → PROTECTED/PERMITTED PHASE
- ← * → PEDESTRIAN PHASE
- ← * → OL OVERLAP

EXISTING AND PROPOSED EMERGENCY VEHICLE PREEMPTION SEQUENCE



NOTES

1. THE MODIFICATIONS TO THE EXISTING CONTROLLER TO ACCOMMODATE THE CHANGE FROM THE EXISTING "DUAL CALL" PUSH-BUTTONS ON THE NORTHEAST, NORTHWEST, AND SOUTHEAST CORNERS TO PUSH-BUTTONS THAT CALL A SINGLE PEDESTRIAN PHASE SHALL BE PAID FOR AS "MODIFY EXISTING CONTROLLER".

CABLE PLAN
(NOT TO SCALE)

NOTES

PUSH-BUTTON "B" SHALL PLACE A CALL TO PHASES 4 & 6

TRAFFIC SIGNAL ELECTRICAL SERVICE REQUIREMENTS

TYPE	NO. OF LAMPS	LED WATTAGE	% OPERATION	TOTAL WATTAGE
SIGNAL (RED)	12	17	50	102
(YELLOW)	12	25	5	15
(GREEN)	12	15	45	81
PERMISSIVE ARROW	16	12	10	19.2
PED. SIGNAL	8	25	100	200
CONTROLLER	1	100	100	100.0
UPS	1	25	100	25
VIDEO SYSTEM	1	150	100	150
BLANK-OUT SIGN	-	25	5	-
FLASHER	-	-	50	-
STREET NAME SIGN	-	120	50	-
LUMINAIRE	-	-	-	-
TOTAL =				692.2

ENERGY COSTS TO:
 VILLAGE OF LOMBARD
 1051 HAMMERSCHMIDT AVE
 LOMBARD, IL 60148
 ENERGY SUPPLY: CONTACT: NEW BUSINESS
 PHONE: (866) 639-3532
 COMPANY: COMED
 ACCOUNT NUMBER: ---

SCHEDULE OF QUANTITIES

PAY ITEM	UNIT	QNTY.
UNDERGROUND CONDUIT, GALVANIZED STEEL, 2" DIA.	FOOT	46
MAINTENANCE OF EXISTING TRAFFIC SIGNAL INSTALLATION	EACH	1
PAINT NEW TRAFFIC SIGNAL POST	EACH	3
ELECTRIC CABLE IN CONDUIT, SIGNAL NO. 14 2C	FOOT	452
ELECTRIC CABLE IN CONDUIT, EQUIPMENT GROUNDING CONDUCTOR, NO. 6 1C	FOOT	64
DRILL EXISTING HANDHOLE	EACH	3
PEDESTRIAN PUSH-BUTTON	EACH	4
MODIFY EXISTING CONTROLLER	EACH	1
REMOVE EXISTING TRAFFIC SIGNAL EQUIPMENT	EACH	1
CONCRETE FOUNDATION, TYPE A 10-INCH DIAMETER	FOOT	12
PEDESTRIAN PUSH-BUTTON POST, SPECIAL	EACH	3
PEDESTRIAN PUSH-BUTTON, NON-LATCHING	EACH	4

**STATE OF ILLINOIS
DEPARTMENT OF TRANSPORTATION**

**CABLE PLAN, PHASE DESIGNATION DIAGRAM, EMERGENCY VEHICLE PREEMPTION SEQUENCE, AND SCHEDULE OF QUANTITIES
MAIN STREET AND MAPLE STREET**

F.A.U. RTE.	SECTION	COUNTY	TOTAL SHEETS	SHEET NO.
2611	19-00161-00-RS	DUPAGE	67	53
				CONTRACT NO. 61G29

SCALE: NONE SHEET 1 OF 1 SHEETS STA. TO STA.