

STATE OF ILLINOIS
DEPARTMENT OF TRANSPORTATION

F.A.U. RTE.	SECTION	COUNTY	TOTAL SHEETS	SHEET NO.
8956	1PP-1	MADISON	8	1
ILLINOIS			CONTRACT NO. 76N30	

FOR INDEX OF SHEETS, SEE SHEET NO. 2

TRAFFIC DATA - WEST DELMAR AVE TO CHOUTEAU ST
 2016 ADT= 5000 (ACTUAL)
 2020 ADT= 5100 (ESTIMATED)
 2040 ADT= 5600 (ESTIMATED)
 SU= 7.0% MU= 1.6%

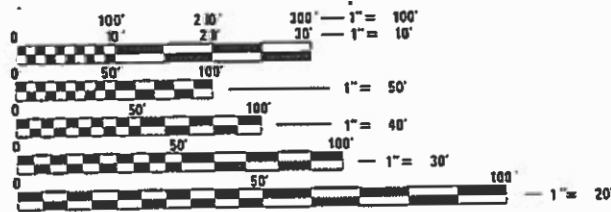
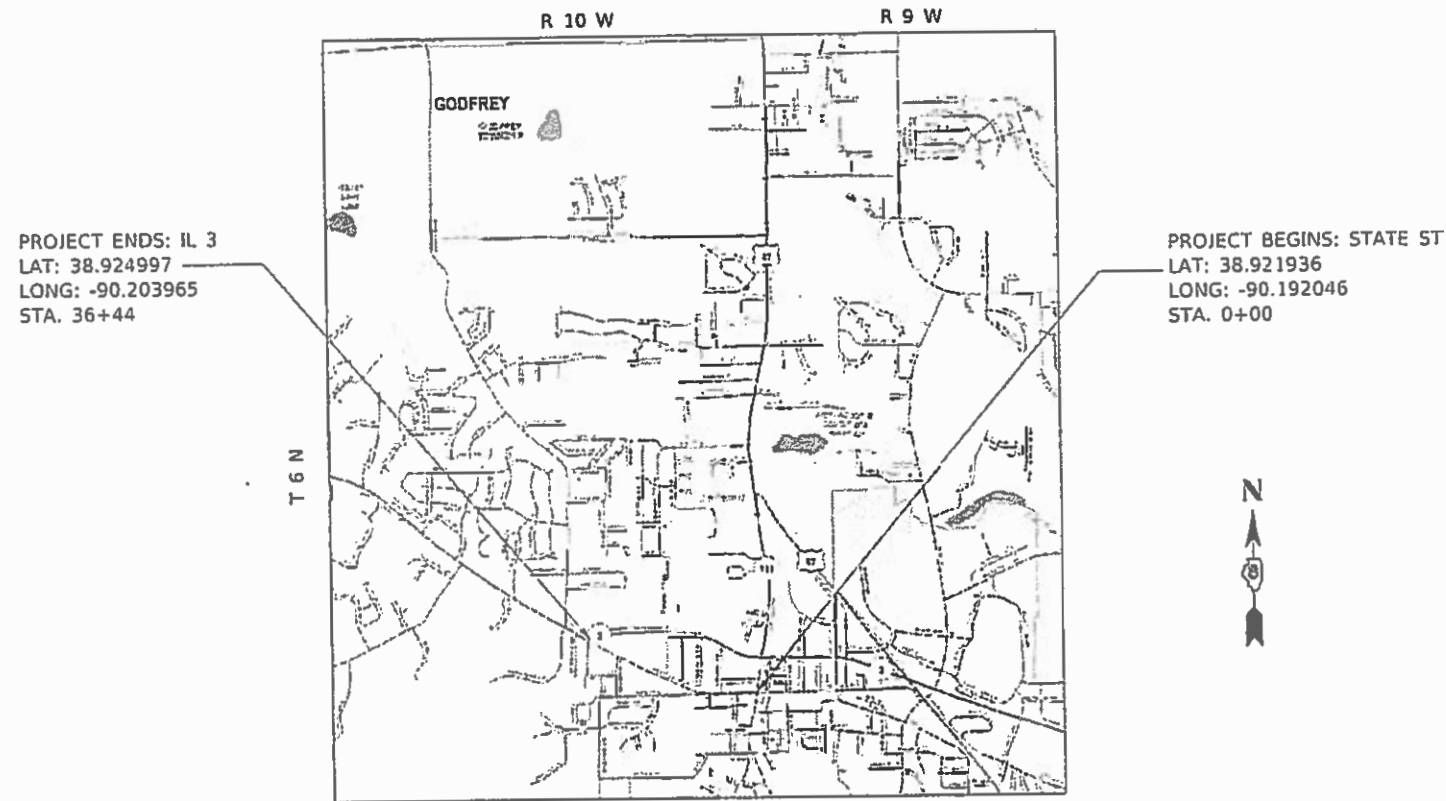
TRAFFIC DATA - CHOUTEAU ST TO STATE ST
 2016 ADT= 6200 (ACTUAL)
 2020 ADT= 6300 (ESTIMATED)
 2040 ADT= 7000 (ESTIMATED)
 SU= 5.6% MU= 1.3%

PROPOSED HIGHWAY PLANS

FAU ROUTE 8956 (WEST DELMAR AVE) SECTION 1PP-1

PATCHING - CM MADISON COUNTY

C-98-072-20



FULL SIZE PLANS HAVE BEEN PREPARED USING STANDARD ENGINEERING SCALES. REDUCED SIZED PLANS WILL NOT CONFORM TO STANDARD SCALES. IN MAKING MEASUREMENTS ON REDUCED PLANS, THE ABOVE SCALES MAY BE USED.

J.U.L.I.E.
 JOINT UTILITY LOCATION INFORMATION FOR EXCAVATORS
 1-800-892-0123
 OR 811

PROJECT ENGINEER TIM PADGETT 618-346-3325
 PROJECT MANAGER MARCEL LARE 618-346-3208

GROSS LENGTH = 3643.2 FT. = 0.69 MILE
 NET LENGTH = 3643.2 FT. = 0.69 MILE

STATE OF ILLINOIS
 DEPARTMENT OF TRANSPORTATION

SUBMITTED Jan 9, 20
Keith Roberts
 REGIONAL ENGINEER

Jan 31, 20
[Signature]
 ENGINEER OF DESIGN AND ENVIRONMENT

Jan 31, 20
[Signature]
 DIRECTOR OF HIGHWAYS PROJECT IMPLEMENTATION

PRINTED BY THE AUTHORITY
 OF THE STATE OF ILLINOIS

INDEX OF SHEETS

1. COVER SHEET
2. INDEX OF SHEETS, HIGHWAY STANDARDS, MIXTURE REQUIREMENTS, GENERAL NOTES AND COMMITMENTS
3. SUMMARY OF QUANTITIES
- 4-5. TYPICAL SECTIONS
6. SCHEDULES OF QUANTITIES
7. EXISTING DETECTOR LOOP DETAILS
8. LOCATION MAP

STANDARDS

- 000001-07 STANDARD SYMBOLS, ABBREVIATIONS AND PATTERNS
- 001006 DECIMAL OF AN INCH AND OF A FOOT
- 442201-03 CLASS C AND D PATCHES
- 701501-06 URBAN LANE CLOSURE, 2L, 2W, UNDIVIDED
- 701701-10 URBAN LANE CLOSURE MULTILANE INTERSECTION
- 701901-08 TRAFFIC CONTROL DEVICES

MIXTURE REQUIREMENTS

ROUTE	FAU 8956
SECTION	1PP-1
COUNTY	MADISON
CONTRACT	76N30

DESCRIPTION	PATCHING – WEST DELMAR AVE FROM IL 3 TO STATE STREET
--------------------	-------------------------------------------------------------

ADT (CONSTRUCTION YR):	6300
MU%	1.3
SU%	5.6
20 YR. ESAL'S:	0.95

MIXTURE USE	FULL DEPTH PATCHING		
	PARTIAL DEPTH PATCHING	BINDER	SURFACE
ACPG	PG 64-22	PG 64-22	PG 64-22
RAP % (MAX)	SEE SPECIAL PROVISION	SEE SPECIAL PROVISION	SEE SPECIAL PROVISION
DESIGN AIR VOIDS	4.0% @ Ndes = 70	4.0% @ Ndes = 70	4.0% @ Ndes = 70
MIX COMPOSITION (GRADATION MIXTURE)	IL 9.5	IL 19.0	IL 9.5
FRICTION AGG	MIXTURE "D"	MIXTURE "B"	MIXTURE "D"
QUALITY MGMT PROGRAM	QC /QA	QC /QA	QC /QA

GENERAL NOTES

1. ILLINOIS STATE LAW REQUIRES A 48-HOUR NOTICE TO BE GIVEN TO ALL UTILITIES WITHIN THE PROJECT AREA BEFORE DIGGING. FIELD MARKING OF FACILITIES MAY BE OBTAINED BY CONTACTING J.U.L.I.E. (1-800-892-0123 OR 811) FOR NON-MEMBERS, THE UTILITY COMPANY DIRECTLY.
2. THE CONTRACTOR AND THE ENGINEER SHALL BE AWARE THAT NO SURVEY WAS PERFORMED FOR THIS PROJECT. THE STATIONING, TOPOGRAPHY, AND QUANTITIES SHOWN IN THE PLANS WERE CREATED USING MICROFILM AND FIELD MEASUREMENTS. ALL SHALL BE ASSUMED TO BE APPROXIMATE. THE CONTRACTOR SHALL VERIFY DIMENSIONS AND CONDITIONS IN THE FIELD PRIOR TO CONSTRUCTION AND ORDERING OF MATERIALS.
3. THE DEPARTMENT STRONGLY ENCOURAGES THE PRIME CONTRACTOR AND THEIR APPROVED SUB-CONTRACTORS TO HIRE MINORITY, WOMEN AND DISADVANTAGED INDIVIDUALS FROM ITS FEDERALLY FUNDED HIGHWAY CONSTRUCTION CAREERS TRAINING PROGRAM (HCCTP) TO HELP MEET WORKFORCE AND TRAINEE GOALS. THIS PROGRAM IS TRAINING MINORITIES, WOMEN AND DISADVANTAGED INDIVIDUALS IN HIGHWAY CONSTRUCTION-RELATED SKILLS, E.G., MATH FOR THE TRADES, JOB READINESS, TECHNICAL SKILLS COURSEWORK (CARPENTRY, CONCRETE FLATWORK, BLUEPRINT READING, SITE PLANS, SITE WORK, TOOLS USE, ETC.) AND OSHA 10 HOUR CERTIFICATION, TO PREPARE THEM FOR A CAREER IN THE HIGHWAY CONSTRUCTION TRADES. GRADUATES ARE WELL-TRAINED AND READY TO BECOME PRODUCTIVE ENTRY-LEVEL CONSTRUCTION WORKERS. CONTACT THE DISTRICT 8 EEO OFFICE AT 618-346-3360 AND/OR THE HCCTP COORDINATOR AT 618-874-6528 TO LEARN MORE ABOUT THE PROGRAM AND FOR ASSISTANCE IN MEETING WORKFORCE AND TRAINEE GOALS.
4. NO OVERNIGHT LANE CLOSURES WILL BE PERMITTED.
5. THE CONTRACTOR SHALL EXERCISE CAUTION TO NOT DAMAGE DETECTOR LOOPS OR LEAD-IN WIRES. ANY DAMAGE SHALL BE REPAIRED AT THE CONTRACTOR'S EXPENSE. NO ADDITIONAL COMPENSATION WILL BE ALLOWED.
6. 200 FEET OF PAINT PAVEMENT MARKING - LINE 4" HAS BEEN PROVIDED FOR PAVEMENT MARKINGS AFFECTED DURING THE PATCHING.

COMMITMENTS

NONE

MODEL: \\MODEL\MHFS
 FILE: \\MAILS_P\pub\hmm\com\ad\illinois.gov\PHWDOT\Documents\DOT_Offices\District 8\Projects\076N30\CADD\DATA\CAD\Sheet\076N30-1PP-1-GENNOTE.dgn

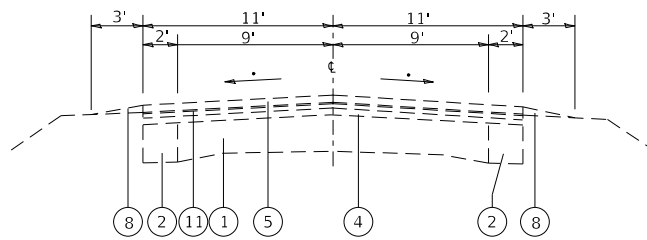
USER NAME = laremd	DESIGNED -	REVISED -
	DRAWN -	REVISED -
PLOT SCALE = 100,0000 ' / in.	CHECKED -	REVISED -
PLOT DATE = 1/9/2020	DATE -	REVISED -

**STATE OF ILLINOIS
DEPARTMENT OF TRANSPORTATION**

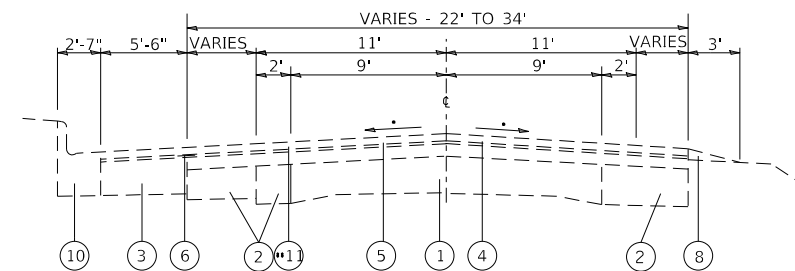
**INDEX OF SHEETS, HIGHWAY STANDARDS, MIXTURE REQUIREMENTS,
GENERAL NOTES AND COMMITMENTS**

SCALE: SHEET 1 OF 1 SHEETS STA. TO STA.

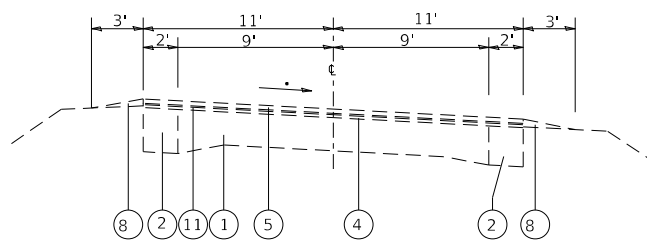
F.A.U. RTE.	SECTION	COUNTY	TOTAL SHEETS	SHEET NO.
8956	1PP-1	MADISON	8	2
			CONTRACT NO. 76N30	
		ILLINOIS	FED. AID PROJECT	



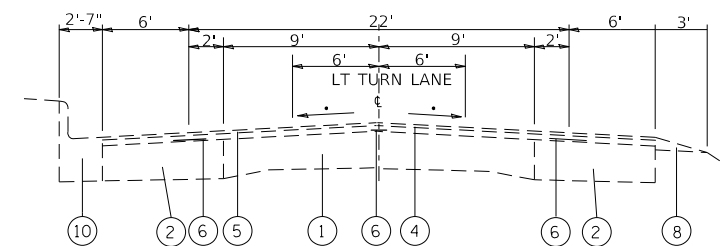
TYPICAL SECTION
 STA. 3+00 TO STA. 8+28
 STA. 13+64 TO STA. 27+42
 * EXISTING SLOPE



TYPICAL SECTION
 STA. 27+42 TO STA. 30+67
 * EXISTING SLOPE
 ** END LEVEL BINDER @ STA. 28+14



TYPICAL SUPERELEVATION SECTION
 STA. 8+28 TO STA. 13+64
 * EXISTING SUPERELEVATION SLOPE



TYPICAL SECTION
 STA. 0+32 TO STA. 1+91
 * EXISTING SLOPE

LEGEND

1. EXISTING P.C.C. PAVEMENT - 18' WIDE - 9"- 6"- 9" DESIGN
2. EXISTING P.C.C. BASE COURSE OR P.C.C. BASE COURSE WIDENING
3. EXISTING STABILIZED SHOULDER
4. EXISTING BITUMINOUS OVERLAY - VARIABLE THICKNESS
5. EXISTING BITUMINOUS CONCRETE SURFACE COURSE, SUPERPAVE, MIXTURE D, N50 - 1 1/2"
6. EXISTING STRIP REFLECTIVE CRACK CONTROL TREATMENT (24" WIDE)
7. EXISTING STONE MEDIAN
8. EXISTING AGGREGATE SHOULDERS, TYPE B
9. EXISTING CONCRETE CURB AND GUTTER, TYPE B-6.06
10. EXISTING CONCRETE CURB AND GUTTER, TYPE B-6.24
11. EXISTING LEVEL BINDER-3/4" (MACHINE METHOD)

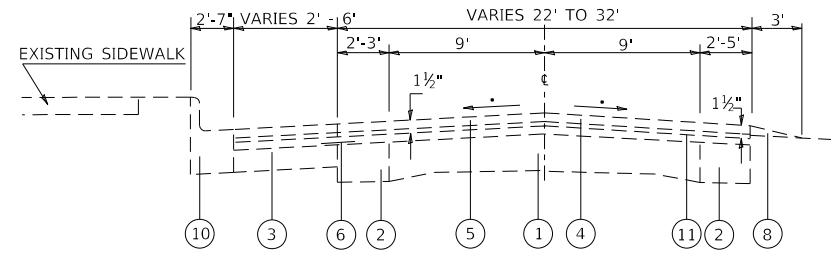
MODEL: \\MODELNAME
 FILE: \\NAME.P... \\IPADDRESS\... \\PROJECT\... \\OFFICE\... \\PROJECT\... \\PROJECT\... \\PROJECT\...

USER NAME = laremd	DESIGNED -	REVISED -
	DRAWN -	REVISED -
PLOT SCALE = 100,0000' / in.	CHECKED -	REVISED -
PLOT DATE = 1/9/2020	DATE -	REVISED -

**STATE OF ILLINOIS
 DEPARTMENT OF TRANSPORTATION**

TYPICAL SECTIONS	
SCALE:	SHEET 1 OF 2 SHEETS
STA.	TO STA.

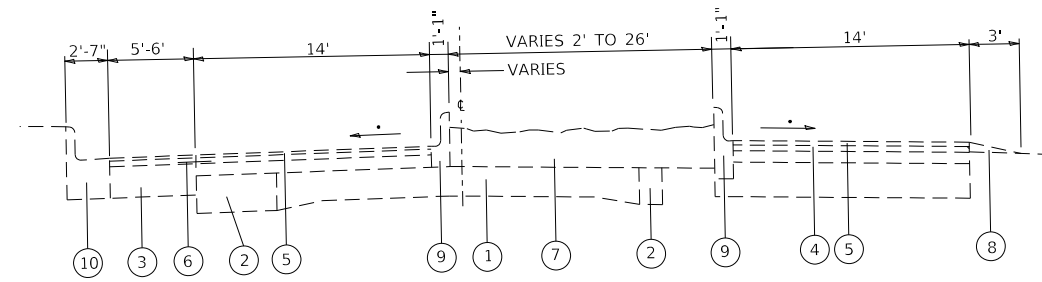
F.A.U. RTE.	SECTION	COUNTY	TOTAL SHEETS	SHEET NO.
8956	1PP-1	MADISON	8	4
CONTRACT NO. 76N30				
ILLINOIS		FED. AID PROJECT		



TYPICAL SECTION

STA. 1+91 TO STA. 3+00

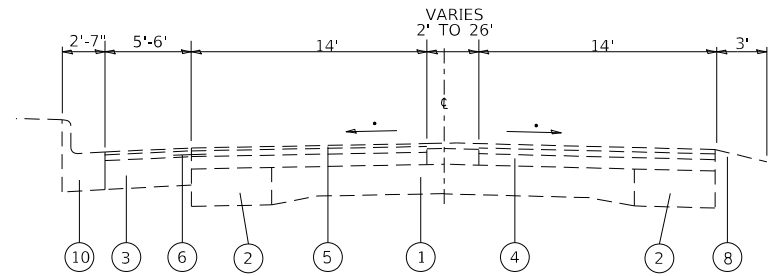
* EXISTING SLOPE



TYPICAL SECTION

STA. 30+67 TO STA. 36+76

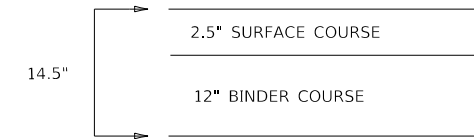
* EXISTING SLOPE



TYPICAL SECTION

STA. 30+67 TO STA. 36+76

* EXISTING SLOPE



FULL – DEPTH PATCH DETAIL

NOT TO SCALE

LEGEND

1. EXISTING P.C.C. PAVEMENT - 18' WIDE - 9"- 6"- 9" DESIGN
2. EXISTING P.C.C. BASE COURSE OR P.C.C. BASE COURSE WIDENING
3. EXISTING STABILIZED SHOULDER
4. EXISTING BITUMINOUS OVERLAY - VARIABLE THICKNESS
5. EXISTING BITUMINOUS CONCRETE SURFACE COURSE, SUPERPAVE, MIXTURE D, N50 - 1 1/2"
6. EXISTING STRIP REFLECTIVE CRACK CONTROL TREATMENT (24" WIDE)
7. EXISTING STONE MEDIAN
8. EXISTING AGGREGATE SHOULDERS, TYPE B
9. EXISTING CONCRETE CURB AND GUTTER, TYPE B-6.06
10. EXISTING CONCRETE CURB AND GUTTER, TYPE B-6.24
11. EXISTING LEVEL BINDER-3/4" (MACHINE METHOD)

MODEL: \\MODELNAME
 FILE: \\NAME.Plot
 PROJECT: \\PROJECTNAME
 OFFICE: \\OFFICE
 DRAWING: \\DRAWING
 DATE: 1/9/2020

USER NAME = laremd	DESIGNED -	REVISED -
PLOT SCALE = 100.0000' / in.	DRAWN -	REVISED -
PLOT DATE = 1/9/2020	CHECKED -	REVISED -
	DATE -	REVISED -

**STATE OF ILLINOIS
DEPARTMENT OF TRANSPORTATION**

TYPICAL SECTIONS

SCALE: SHEET 2 OF 2 SHEETS STA. TO STA.

F.A.U. RTE.	SECTION	COUNTY	TOTAL SHEETS	SHEET NO.
8956	1PP-1	MADISON	8	5
CONTRACT NO. 76N30				
		ILLINOIS	FED. AID PROJECT	

FULL DEPTH PATCHING SCHEDULE, 12"					
MILE STATIONS	LOCATION	LENGTH	WIDTH	AREA	CLASS D PATCHES TYPE IV
	EB/WB	FEET	FEET	SQ YD	SQ YD
WEST DELMAR AVE					
2+50	EB	20	12	26.7	26.7
SUBTOTAL					26.7
ANTICIPATED FAILURES (15%)					4.0
TOTAL					30.7

PARTIAL DEPTH PATCHING SCHEDULE, 2.5"						
STATIONS	LOCATION	LENGTH	WIDTH	AREA	PARTIAL DEPTH PATCHING	PARTIAL DEPTH REMOVAL TYPE II
	EB/WB	FEET	FEET	SQ YD	TON	SQ YD
WEST DELMAR AVE						
9+50	WB	6	12	8	1.1	8
9+50	EB	6	12	8	1.1	8
20+59	EB	6	12	8	1.1	8
20+59	WB	6	12	8	1.1	8
26+40	WB	6	12	8	1.1	8
26+40	EB	6	12	8	1.1	8
31+68	EB	6	12	8	1.1	8
SUBTOTAL					8	56
ANTICIPATED FAILURES (15%)					1.2	8.4
TOTAL					9.2	64.4

MODEL: S:\MODEL\MHMS
 FILE: MHMS_Plan\p10m100m.mxd
 I:\projects\76N30\DOT\Documents\DOT_Offices\lartct\lartct\p10m100m.mxd

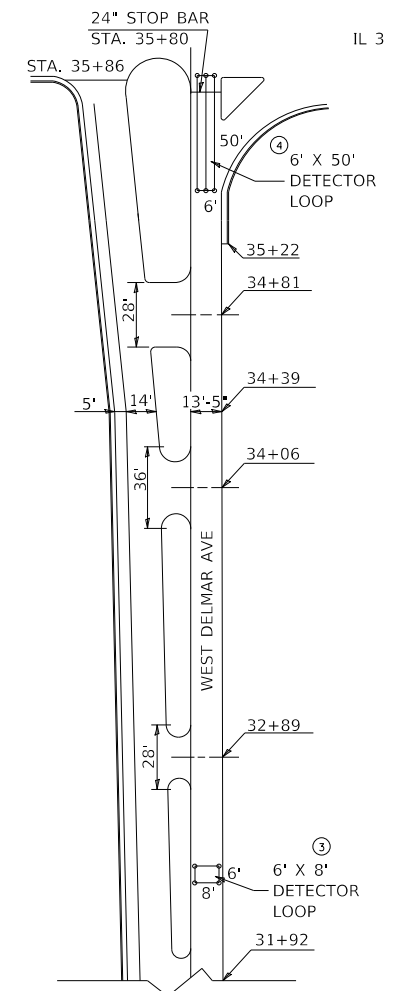
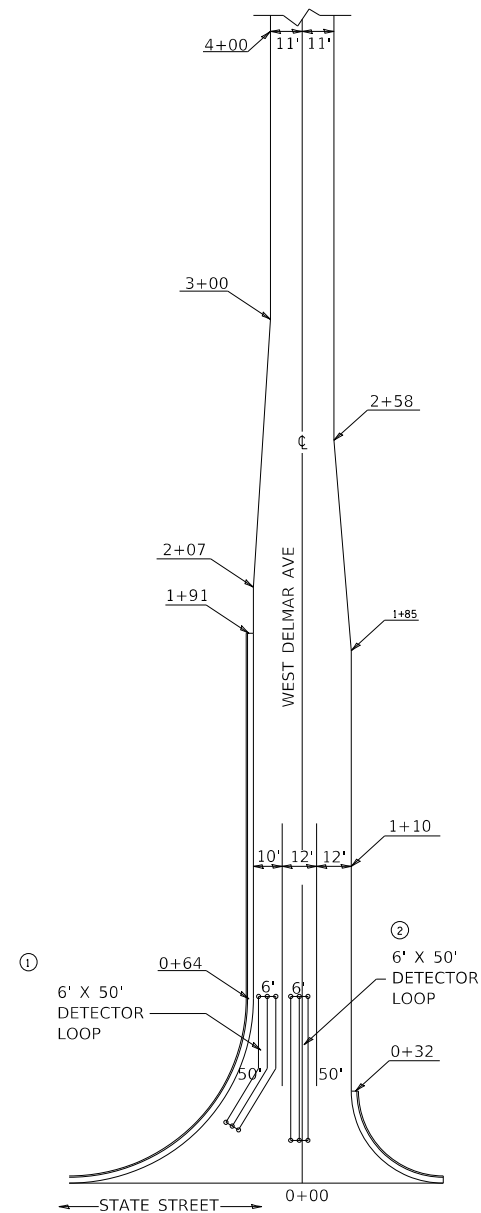
USER NAME = laremd	DESIGNED -	REVISED -
	DRAWN -	REVISED -
PLOT SCALE = 100,0000' / in.	CHECKED -	REVISED -
PLOT DATE = 1/9/2020	DATE -	REVISED -

**STATE OF ILLINOIS
DEPARTMENT OF TRANSPORTATION**

SCHEDULES OF QUANTITIES

SCALE: SHEET 1 OF 1 SHEETS STA. TO STA.

F.A.U. RTE.	SECTION	COUNTY	TOTAL SHEETS	SHEET NO.
9110	1PP-1	MADISON	8	6
			CONTRACT NO. 76N30	
		ILLINOIS	FED. AID PROJECT	



MODEL: \\MODEL\NAME
 FILE: \\NAME.Plot\Illinois\gov\PWIDOT\Documents\IDOT_Offices\IDOT\Projects\IDOT\76N30\CADD\DATA\CAD\Sheet\IDOT\76N30-11-11-11.dgn

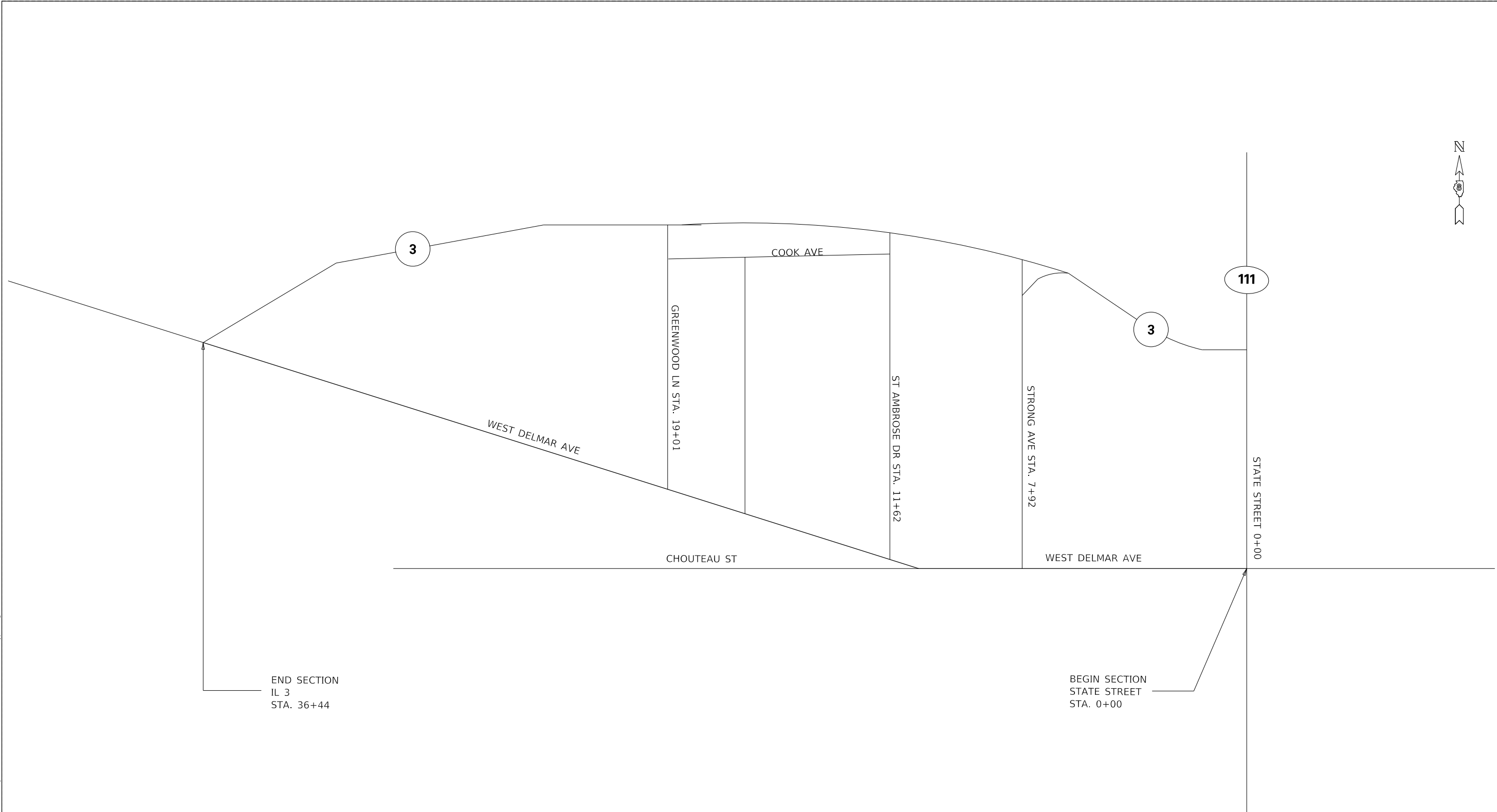
USER NAME = laremd	DESIGNED -	REVISED -
	DRAWN -	REVISED -
PLOT SCALE = 100,0000' / in.	CHECKED -	REVISED -
PLOT DATE = 1/9/2020	DATE -	REVISED -

**STATE OF ILLINOIS
DEPARTMENT OF TRANSPORTATION**

**EXISTING DETECTOR LOOP DETAILS
(FOR INFORMATION ONLY)**

SCALE: SHEET 1 OF 1 SHEETS STA. TO STA.

F.A.U. RTE.	SECTION	COUNTY	TOTAL SHEETS	SHEET NO.
8956	1PP-1	MADISON	8	7
CONTRACT NO. 76N30				
		ILLINOIS	FED. AID PROJECT	



END SECTION
IL 3
STA. 36+44

BEGIN SECTION
STATE STREET
STA. 0+00

MODEL: s:\MODEL\NAME
 FILE: NAME.dwg
 PROJECT: \projects\DOT\Documents\DOT_Offices\District 8\Projects\DOT\76N30\CADD\DATA\CAD\Sheet\DOT_76N30-1PP-1.dwg

USER NAME = laremd	DESIGNED -	REVISED -
	DRAWN -	REVISED -
PLOT SCALE = 100,0000' / in.	CHECKED -	REVISED -
PLOT DATE = 1/9/2020	DATE -	REVISED -

**STATE OF ILLINOIS
DEPARTMENT OF TRANSPORTATION**

LOCATION MAP

SCALE: SHEET 1 OF 1 SHEETS STA. TO STA.

F.A.U. RTE.	SECTION	COUNTY	TOTAL SHEETS	SHEET NO.
8956	1PP-1	MADISON	8	8
CONTRACT NO. 76N30				
		ILLINOIS	FED. AID PROJECT	