

F.A.P. NO.	SECTION	COUNTY	TOTAL SHEETS	SHEET NO.
770	(115,116)RS-4	MOULTRIE	20	1
ILLINOIS			CONTRACT NO. 74824	

03-06-2020 LETTING ITEM 132

STATE OF ILLINOIS  
DEPARTMENT OF TRANSPORTATION

# PROPOSED HIGHWAY PLANS

FOR INDEX OF SHEETS, SEE SHEET NO. 2

**STATION EQUATIONS**

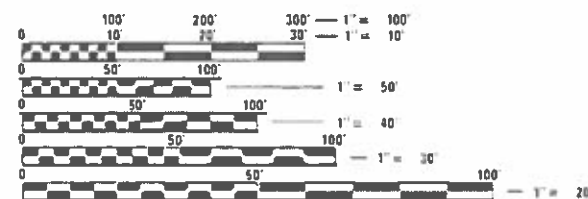
STA 822 + 72.07 BK = 822 + 64.12 AH  
 STA 842 + 04.92 BK = 842 + 13.00 AH  
 STA 1124 + 80.90 BK = 1982 + 63.20 AH

FAP ROUTE 770 (IL 128)  
 SECTION (115,116)RS-4  
 PROJECT STP-6IUZ(162)  
 RESURFACING  
 MOULTRIE COUNTY

**BRIDGE OMISSIONS**

STA 833 + 48 TO STA 833 + 70  
 STA 843 + 42 TO STA 843 + 80  
 STA 950 + 66 TO STA 951 + 04  
 STA 958 + 85 TO STA 959 + 43  
 STA 1102 + 69 TO STA 1102 + 91

ADT (2019) = 2450



FULL SIZE PLANS HAVE BEEN PREPARED USING STANDARD ENGINEERING SCALES. REDUCED SIZED PLANS WILL NOT CONFORM TO STANDARD SCALES. IN MAKING MEASUREMENTS ON REDUCED PLANS, THE ABOVE SCALES MAY BE USED.

J.U.L.I.E.  
 JOINT UTILITY LOCATION INFORMATION FOR EXCAVATORS  
 1-800-892-0123  
 OR 811

PROJECT ENGINEER BRIAN LEWIS  
 PROJECT MANAGER JESSICA HILLE

CONTRACT NO. 74824

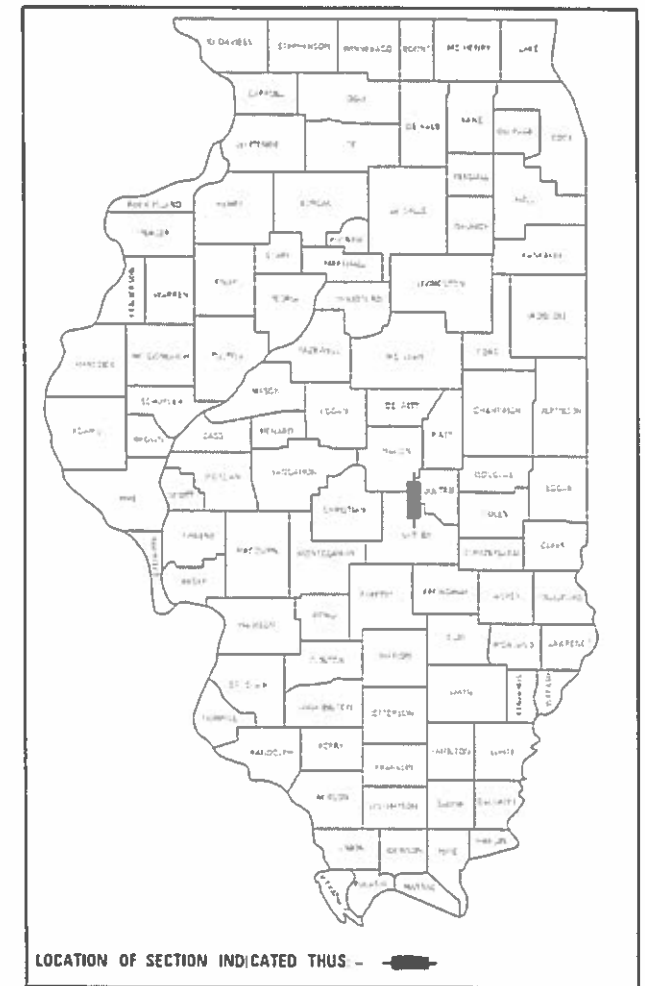
PROJECT ENDS  
 STA 1983 + 00

PROJECT BEGINS  
 STA 788 + 18



GROSS LENGTH = 33,699.57 FT. = 6.38 MILE  
 NET LENGTH = 33,521.57 FT. = 6.35 MILE

D-97-011-18



LOCATION OF SECTION INDICATED THUS - [Symbol]

STATE OF ILLINOIS  
 DEPARTMENT OF TRANSPORTATION

SUBMITTED January 6, 2020  
*Jeffrey P. Meyer*  
 REGIONAL ENGINEER

Jan 31, 2020  
*[Signature]*  
 ENGINEER OF DESIGN AND ENVIRONMENT

Jan 31, 2020  
*[Signature]*  
 DIRECTOR OF HIGHWAYS PROJECT IMPLEMENTATION

PRINTED BY THE AUTHORITY  
 OF THE STATE OF ILLINOIS

GENERAL NOTES

THE PROPOSED PROJECT IS LOCATED ON IL 128 FROM 0.3 MILES SOUTH OF IL 121 IN DALTON CITY TO BETHANY BLACKTOP.

THE WORK INCLUDED IN SECTION (115,116)RS-4 CONSISTS OF PATCHING, HMA SURFACE REMOVAL, HMA RESURFACING, SHOULDER RUMBLE STRIPS, AGGREGATE SHOULDERS, PAINT PAVEMENT MARKING, RAISED REFLECTIVE PAVEMENT MARKERS, PROTECTING OR RESETTING SURVEY MARKERS, SURVEY MARKER VAULTS, PERMANENT SURVEY MARKERS (TYPE 1), AND OTHER NECESSARY WORK TO COMPLETE THE SECTION.

AGGREGATE FOR ENTRANCES IS INCLUDED IN THE QUANTITY FOR AGGREGATE SHOULDERS.

MATERIAL FOR AGGREGATE SHOULDERS TYPE B, SHALL BE CRUSHED STONE OR CRUSHED CONCRETE.

SHORT TERM PAVEMENT MARKING APPLIED TO ANY MILLED SURFACE SHALL BE PAINT AND THOSE APPLIED TO THE HMA COURSES SHALL BE TAPE.

QUANTITIES FOR PAINT PAVEMENT MARKING - LINE 4" CONSISTS OF 8,425 FEET OF YELLOW AND 66,612 FEET OF WHITE.

THE FOLLOWING MIXTURE REQUIREMENTS ARE APPLICABLE FOR THIS PROJECT:

APPLICATION	AC/PG	DESIGN AIR VOIDS	MIXTURE COMPOSITION	FRICTION AGGREGATE	QUALITY MANAGEMENT
BINDER COURSE	PG 64-22	4.0% $\phi$ Ndesign=90	IL - 9.5FG	N/A	PPF
SURFACE COURSE	PG 64-22	4.0% $\phi$ Ndesign=90	IL - 9.5FG	MIXTURE D	PPF
INCIDENTAL SURFACE	PG 64-22	4.0% $\phi$ Ndesign=70	IL - 9.5	MIXTURE C	QC/QA
CLASS D PATCHING	PG 64-22	4.0% $\phi$ Ndesign=70	IL - 19.0	N/A	QC/QA

THE FOLLOWING RATES OF APPLICATION HAVE BEEN USED IN CALCULATING PLAN QUANTITIES:

HOT MIX ASPHALT	112 LB/SQ YD/INCH
GRANULAR MATERIAL	2.05 TONS/CU YD
BITUMINOUS MATERIALS (TACK COAT)	
MILLED AND CONCRETE SURFACES	0.05 LB/SQ FT
FOG COAT ON BINDER COURSE	0.025 LB/SQ FT

INDEX OF SHEETS

SHEET NO.	ITEM
1	COVER SHEET
2	GENERAL NOTES & INDEX OF SHEETS
3-4	SUMMARY OF QUANTITIES
5	TYPICAL SECTIONS
6-11	SCHEDULE OF QUANTITIES
12	ENTRANCE SCHEDULE
13-14	PLAN SHEETS
15	DETAILS
16-19	PAVEMENT MARKING DETAILS
20	SURVEY MARKER VAULT DETAIL

THE FOLLOWING STANDARDS ARE A PART OF THESE PLANS AND ARE INCLUDED FOLLOWING THE LAST NUMBERED SHEET OF THE PLANS.

406201-01	MAILBOX TURNOUT
442201-03	CLASS C AND D PATCHES
642006	SHOULDER RUMBLE STRIPS, 8 IN.
667101-02	PERMANENT SURVEY MARKERS
701001-02	OFF-ROAD OPERATIONS, 2L, 2W, MORE THAN 15' AWAY
701006-05	OFF-ROAD OPERATIONS, 2L, 2W, 15' TO 24" FROM PAVEMENT EDGE
701201-05	LANE CLOSURE, 2L, 2W, DAY ONLY, FOR SPEEDS >= 45 MPH
701301-04	LANE CLOSURE, 2L, 2W, SHORT TIME OPERATIONS
701306-04	LANE CLOSURE, 2L, 2W, SLOW MOVING OPERATIONS DAY ONLY, FOR SPEEDS >= 45 MPH
701311-03	LANE CLOSURE, 2L, 2W, MOVING OPERATIONS - DAY ONLY
701901-08	TRAFFIC CONTROL DEVICES
781001-04	TYPICAL APPLICATIONS RAISED REFLECTIVE PAVEMENT MARKERS

MODEL: Default  
FILE: h:\m15c\_p\pub\planroom.dwg  
PROJECT: 74824\CADD\DATA\CADD\Drawings\DOT\_Offices\Drawings\74824\451c\gennotes.dgn

USER NAME = steffemk	DESIGNED -	REVISED -
	DRAWN -	REVISED -
PLOT SCALE = 100.0000' / in.	CHECKED -	REVISED -
PLOT DATE = 1/7/2020	DATE -	REVISED -

**STATE OF ILLINOIS  
DEPARTMENT OF TRANSPORTATION**

**GENERAL NOTES AND INDEX OF SHEETS**

SCALE:	SHEET	OF	SHEETS	STA.	TO STA.

F.A.P. RTE.	SECTION	COUNTY	TOTAL SHEETS	SHEET NO.
770	(115,116)RS-4	MOULTRIE	20	2
CONTRACT NO. 74824				
		ILLINOIS	FED. AID PROJECT	

80% FED  
20% STATE

80% FED  
20% STATE

SUMMARY OF QUANTITIES			TOTAL QUANTITIES	CONSTRUCTION TYPE CODE		
CODE NO	ITEM	UNIT		0005		
40600290	BITUMINOUS MATERIALS (TACK COAT)	POUND	80356	80356		
40600990	TEMPORARY RAMP	SO YD	160	160		
40602975	HOT-MIX ASPHALT BINDER COURSE, IL-9.5FG, N90	TON	10996	10996		
40604064	HOT-MIX ASPHALT SURFACE COURSE, IL-9.5, MIX "D", N90	TON	12949	12949		
40800050	INCIDENTAL HOT-MIX ASPHALT SURFACING	TON	80	80		
44000155	HOT-MIX ASPHALT SURFACE REMOVAL, 1 1/2"	SO YD	119189	119189		
44201798	CLASS D PATCHES, TYPE I, 13 INCH	SO YD	52	52		
44201803	CLASS D PATCHES, TYPE II, 13 INCH	SO YD	2911	2911		
44201807	CLASS D PATCHES, TYPE III, 13 INCH	SO YD	253	253		
44201809	CLASS D PATCHES, TYPE IV, 13 INCH	SO YD	291	291		
48101200	AGGREGATE SHOULDERS, TYPE B	TON	4534	4534		
64200108	SHOULDER RUMBLE STRIPS, 8 INCH	FOOT	63645	63645		
66700205	PERMANENT SURVEY MARKERS, TYPE I	EACH	20	20		
67000400	ENGINEER'S FIELD OFFICE, TYPE A	CAL MO	6	6		

SUMMARY OF QUANTITIES			TOTAL QUANTITIES	CONSTRUCTION TYPE CODE		
CODE NO	ITEM	UNIT		0005		
67000600	ENGINEER'S FIELD LABORATORY	CAL MO	6	6		
67100100	MOBILIZATION	L SUM	1	1		
70100450	TRAFFIC CONTROL AND PROTECTION, STANDARD 701201	L SUM	1	1		
70100460	TRAFFIC CONTROL AND PROTECTION, STANDARD 701306	L SUM	1	1		
70107025	CHANGEABLE MESSAGE SIGN	CAL DA	28	28		
70300100	SHORT TERM PAVEMENT MARKING	FOOT	10109	10109		
70300150	SHORT TERM PAVEMENT MARKING REMOVAL	SO FT	1123	1123		
70300220	TEMPORARY PAVEMENT MARKING - LINE 4"	FOOT	75037	75037		
* 78001110	PAINT PAVEMENT MARKING - LINE 4"	FOOT	75037	75037		
* 78100100	RAISED REFLECTIVE PAVEMENT MARKER	EACH	422	422		
78300200	RAISED REFLECTIVE PAVEMENT MARKER REMOVAL	EACH	422	422		
X0326440	SURFACE REMOVAL, VARIABLE DEPTH (SPECIAL)	SO YD	760	760		
X7830070	GROOVING FOR RECESSED PAVEMENT MARKING 5"	FOOT	75037	75037		

\* SPECIALTY ITEM

REV. - MS

MODEL: Default  
FILE: \\nrcs-pw\pub\mrcm\dot\illinois.gov\PR\DOT\Documents\DOT\_Offices\District\_7\Projects\74824\CAD\Drawings\CAD\Drawings\74824-SPH-S00.dgn

USER NAME = steffennk	DESIGNED -	REVISED -
PLOT SCALE = 100.0000' / in.	DRAWN -	REVISED -
PLOT DATE = 1/7/2020	CHECKED -	REVISED -
	DATE -	REVISED -

STATE OF ILLINOIS  
DEPARTMENT OF TRANSPORTATION

SUMMARY OF QUANTITIES

SCALE: SHEET OF SHEETS STA. TO STA.

F.A. RTE.	SECTION	COUNTY	TOTAL SHEETS	SHEET NO.
770	(115,116)RS-4	MOULTRIE	20	3
ILLINOIS FED. AID PROJECT			CONTRACT NO. 74824	

80% FED  
20% STATE

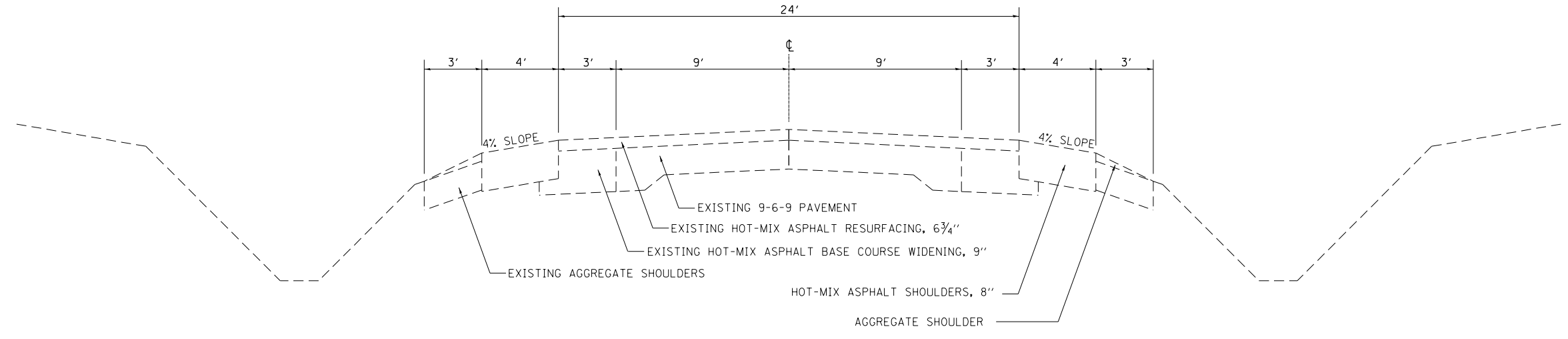
SUMMARY OF QUANTITIES			TOTAL QUANTITIES	CONSTRUCTION TYPE CODE		
CODE NO	ITEM	UNIT		0005		
Z0033700	LONGITUDINAL JOINT SEALANT	FOOT	33522	33522		
Z0049799	PROTECTING OR RESETTING SURVEY MARKERS	EACH	37	37		
Z0070202	SURVEY MARKER VAULT	EACH	17	17		

SUMMARY OF QUANTITIES			TOTAL QUANTITIES	CONSTRUCTION TYPE CODE		
CODE NO	ITEM	UNIT		0005		

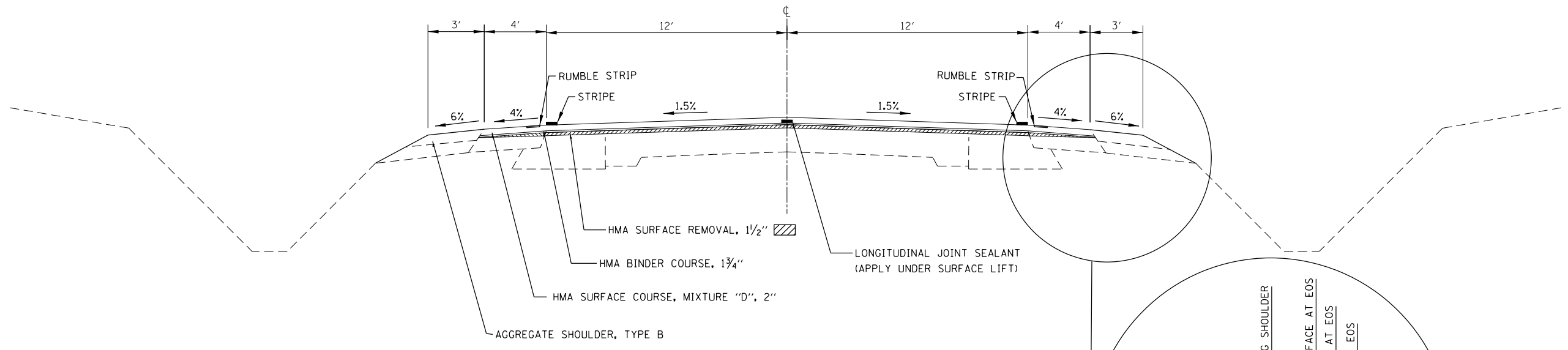
MODEL: Default  
FILE: \\hills\dms\pub\baroncoron.dwg  
C:\Illinois\DOT\Documents\DOT\_Offices\DLT\7\Projects\74824\CADD\Drawings\74824-Sts-S00.dgn

USER NAME = steffenmk DESIGNED - DRAWN - CHECKED - DATE -	DESIGNED - REVISED -	<b>STATE OF ILLINOIS</b> <b>DEPARTMENT OF TRANSPORTATION</b>	<b>SUMMARY OF QUANTITIES</b>		F.A.P. RTE.	SECTION	COUNTY	TOTAL SHEETS	SHEET NO.	
	PLOT SCALE = 100.0000 ' / in. PLOT DATE = 1/7/2020				CHECKED - REVISED -	770	(115.116)RS-4	MOULTRIE	20	4
					CONTRACT NO. 74824					
					SCALE:	SHEET	OF	SHEETS	STA.	TO STA.

ILLINOIS FED. AID PROJECT

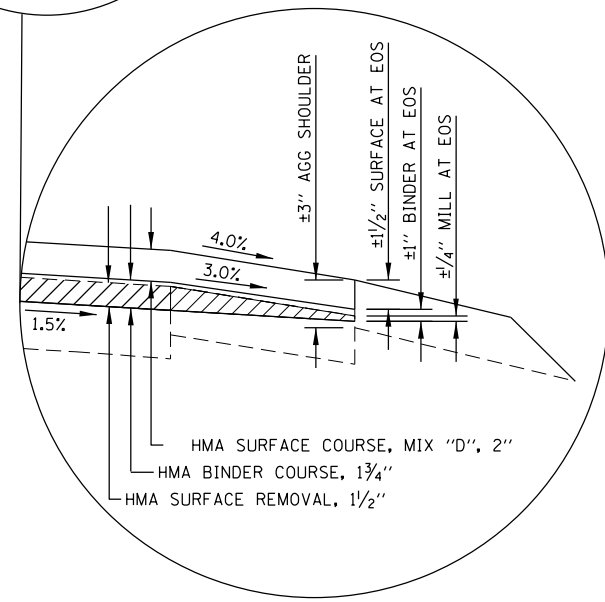


**EXISTING**



**PROPOSED**

STA 788+18 TO STA 833+48  
 STA 833+70 TO STA 843+42  
 STA 843+80 TO STA 950+66  
 STA 951+04 TO STA 958+85  
 STA 959+43 TO STA 1102+69  
 STA 1102+91 TO STA 1983+00



FILE NAME =	USER NAME = steffenmk	DESIGNED -	REVISED -
p:\planroom.dot.illinois.gov\PWIDOT\Documents\IDOT Offices\District 7\Projects\74824\DRAWN\CADsheets\0774824-shr-typicals.d		DRAWN -	REVISED -
Default	PLOT SCALE = 100.0000' / in.	CHECKED -	REVISED -
	PLOT DATE = 1/7/2020	DATE -	REVISED -

**STATE OF ILLINOIS  
DEPARTMENT OF TRANSPORTATION**

<b>TYPICALS</b>			
SCALE:	SHEET	OF SHEETS	STA. TO STA.

F.A.P. RTE.	SECTION	COUNTY	TOTAL SHEETS	SHEET NO.
770	(115, 116)RS-4	MOULTRIE	20	5
CONTRACT NO. 74824				
ILLINOIS FED. AID PROJECT				

PAVING SCHEDULE

STATION	TO	STATION	LENGTH	WIDTH OF MAINLINES	WIDTH OF SHOULDERS	HOT-MIX ASPHALT SURFACE REMOVAL, 1 1/2"	BITUMINOUS MATERIAL (TACK COAT)	LONGITUDINAL JOINT SEALANT	HOT-MIX ASPHALT SURFACE COURSE, MIX "D", N90
						SO YD			POUNDS
788+18		788+63	45	24	8	160	100	45	17
788+63		822+72.07	3409	24	8	12121	8182	3409	1317
822+72.07 BK = 822+64.12 AH									
822+64.12		833+03	1039	24	8	3694	2493	1039	401
833+03		833+48	45	24	8	160	100	45	17
833+48		833+70	22	24	8	BRIDGE OMISSION			
833+70		834+15	45	24	8	160	100	45	17
834+15		842+04.92	790	24	8	2809	1896	790	305
842+04.92 BK = 842+13.00 AH									
842+13.00		842+97	84	24	8	299	201	84	32
842+97		843+42	45	24	8	160	100	45	17
843+42		843+80	38	24	8	BRIDGE OMISSION			
843+80		844+25	45	24	8	160	100	45	17
844+25		950+21	10596	24	8	37675	25431	10596	4093
950+21		950+66	45	24	8	160	100	45	17
950+66		951+04	38	24	8	BRIDGE OMISSION			
951+04		951+49	45	24	8	160	100	45	17
951+49		958+40	691	24	8	2457	1659	691	267
958+40		958+85	45	24	8	160	100	45	17
958+85		959+43	58	24	8	BRIDGE OMISSION			
959+43		959+88	45	24	8	160	100	45	17
959+88		1102+24	14236	24	8	50617	34167	14236	5499
1102+24		1102+69	45	24	8	160	100	45	17
1102+69		1102+91	22	24	8	BRIDGE OMISSION			
1102+91		1103+36	45	24	8	160	100	45	17
1103+36		1124+72.70	2137	24	8	7597	5127	2137	825
1124+72.70		1124+80.90	8	24	8	29	21	8	3
1124+80.90 BK = 1982+63.20 AH									
1982+63.20		1983+00	37	24	8	131	80	37	14
TOTAL			33522	24	8	119189	80356	33522	12949

PAVING SCHEDULE - BINDER ONLY

STATION	TO	STATION	LENGTH	MAINLINE WIDTH	SHOULDER WIDTH	HOT-MIX ASPHALT BINDER COURSE, IL-9.5FG, N90	
						TONS	
788+28		788+63	35	24	8	8	
788+63		822+72.07	3409	24	8	1127	
822+72.07 BK = 822+64.12 AH							
822+64.12		833+03	1039	24	8	343	
833+03		833+38	35	24	8	8	
833+38		833+80	BRIDGE OMISSION				
833+80		834+15	35	24	8	8	
834+15		842+04.92	790	24	8	261	
842+04.92 BK = 842+13.00 AH							
842+13.00		842+97	84	24	8	28	
842+97		843+32	35	24	8	8	
843+32		843+90	BRIDGE OMISSION				
843+90		844+25	35	24	8	8	
844+25		950+21	10596	24	8	3502	
950+21		950+56	35	24	8	8	
950+56		951+14	BRIDGE OMISSION				
951+14		951+49	35	24	8	8	
951+49		958+40	691	24	8	228	
958+40		958+75	35	24	8	8	
958+75		959+53	BRIDGE OMISSION				
959+53		959+88	35	24	8	8	
959+88		1102+24	14236	24	8	4705	
1102+24		1102+59	35	24	8	8	
1102+59		1103+01	BRIDGE OMISSION				
1103+01		1103+36	35	24	8	8	
1103+36		1124+73	2137	24	8	706	
1124+73		1124+80.9	8	24	8	2	
1124+80.90 BK = 1982+63.20 AH							
1982+63.2		1982+90	27	24	8	6	
TOTAL			33402	24	8	10996	

10' BUTT JOINT ON BOTH SIDES OF BRIDGES & BEGINNING AND END OF JOB (ADDED TO BRIDGE OMISSIONS, BEGINNING, & END)

MODEL: Default  
FILE: h:\mhc\p\pub\haronom.dwg  
PROJECT: 7822\CA00Data\CAD\haronom.dwg  
OFFICE: D:\dot\Documents\DOT - Office\1124\1124.dwg  
DATE: 1/7/2020

USER NAME = steffemk	DESIGNED -	REVISED -
	DRAWN -	REVISED -
PLOT SCALE = 40.0000 ' / in.	CHECKED -	REVISED -
PLOT DATE = 1/7/2020	DATE -	REVISED -

STATE OF ILLINOIS  
DEPARTMENT OF TRANSPORTATION

SCHEDULES OF PAVING

SCALE: SHEET OF SHEETS STA. TO STA.

F.A.P. RTE.	SECTION	COUNTY	TOTAL SHEETS	SHEET NO.
770	(115, 116)RS-4	MOULTRIE	20	6
CONTRACT NO. 74824				
ILLINOIS FED. AID PROJECT				



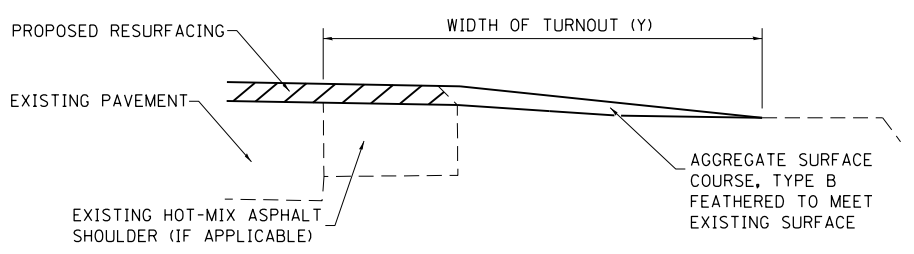
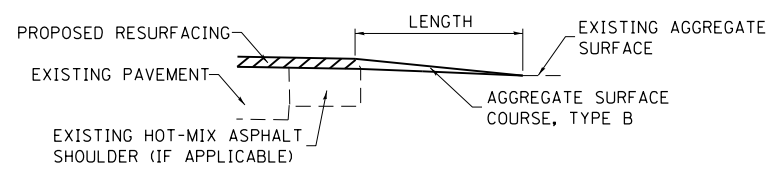
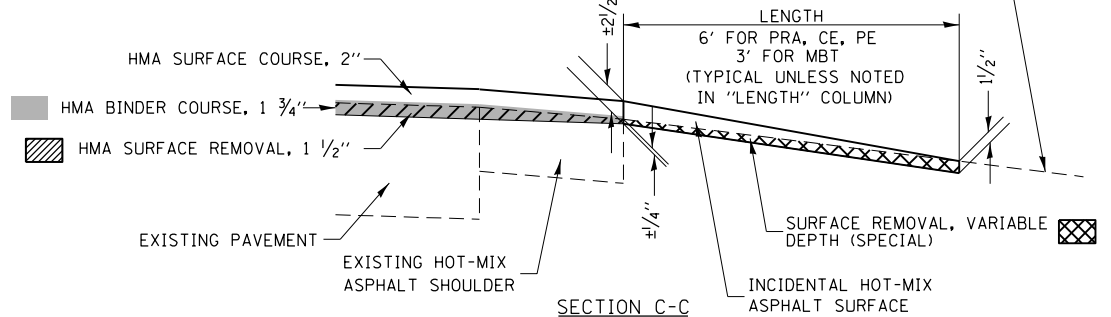
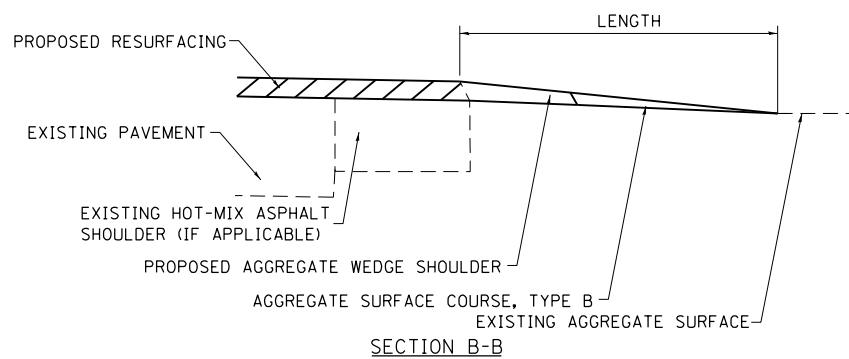
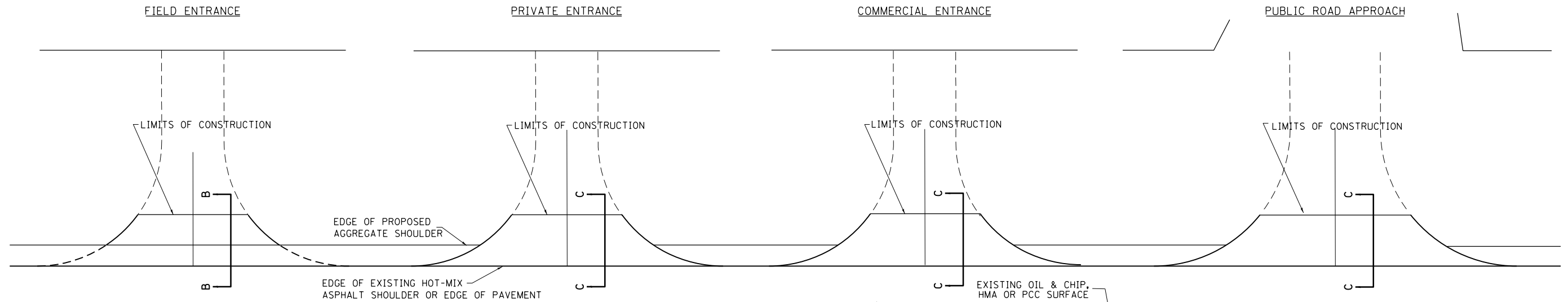












**TYPICAL SECTION AT MAILBOX TURNOUT**

NOTE: SEE STANDARD 406201 FOR MAILBOX TURNOUT DETAILS

**NOTES**

LENGTH = 10' UNLESS OTHERWISE NOTED ON PLANS

IF THERE IS NOT EXISTING HOT-MIX ASPHALT SHOULDER THEN THE ENTRANCE TAPER STARTS AT THE EDGE OF EXISTING PAVEMENT.

THE COST OF THE BITUMINOUS MATERIALS (TACK COAT) FOR ENTRANCES AND PUBLIC ROAD APPROACHES SHALL BE INCLUDED IN THE PAY ITEM INCIDENTAL HOT-MIX ASPHALT SURFACING.

SIDE	STATION	TYPE	SURFACE REMOVAL, VARIABLE DEPTH (SPECIAL)		INCIDENTAL HOT-MIX ASPHALT SURFACING		LENGTH
			SO YD	TON	TON	FOOT	
LT	790+88	PRA	122	13	0	23	
RT	790+88	PRA	52	5	0		
LT	792+30	FE	0	0	4		
RT	810+60	FE	0	0	3		
RT	817+50	FE	0	0	2		
LT	818+90	FE	0	0	1		
LT	827+55	FE	0	0	2		
RT	828+80	FE	0	0	2		
RT	844+50	PRA	111	12	0	32	
LT	845+50	PRA	22	2	0		
RT	845+80	CE	0	0	4		
LT	850+85	FE	0	0	2		
LT	872+15	FE	0	0	3		
LT	892+24	FE	0	0	2		
RT	897+15	PRA	29	3	0		
LT	898+75	PRA	26	3	0		
RT	910+20	FE	0	0	1		
LT	912+00	FE	0	0	3		
RT	923+25	FE	0	0	3		
LT	925+40	FE	0	0	2		

SIDE	STATION	TYPE	SURFACE REMOVAL, VARIABLE DEPTH (SPECIAL)		INCIDENTAL HOT-MIX ASPHALT SURFACING		LENGTH
			SO YD	TON	TON	FOOT	
RT	926+10	FE	0	0	2		
RT	926+55	MBT	0	0	4	11	
LT	930+20	FE	0	0	1		
LT	932+35	FE	0	0	2		
RT	937+00	FE	0	0	2		
RT	947+35	FE	0	0	2		
LT	950+50	PRA	40	4	0		
RT	956+45	FE	0	0	3		
LT	957+35	FE	0	0	3		
RT	963+25	PRA	32	3	0		
RT	964+75	FE	0	0	2		
LT	978+65	FE	0	0	2		
RT	979+05	FE	0	0	2		
LT	991+50	FE	0	0	2		
RT	998+50	FE	0	0	2		
RT	1003+15	PRA	24	3	0		
LT	1005+25	PRA	28	3	0		
RT	1015+40	FE	0	0	2		
RT	1029+60	FE	0	0	2		
RT	1043+25	FE	0	0	2		

SIDE	STATION	TYPE	SURFACE REMOVAL, VARIABLE DEPTH (SPECIAL)		INCIDENTAL HOT-MIX ASPHALT SURFACING		LENGTH
			SO YD	TON	TON	FOOT	
RT	1057+50	FE	0	0	2		
RT	1058+40	PRA	58	6	0	20	
LT	1058+50	PRA	19	2	0		
RT	1078+50	FE	0	0	2		
LT	1082+10	PE	0	0	3		
RT	1085+00	FE	0	0	2		
LT	1088+00	FE	0	0	3		
LT	1098+50	FE	0	0	4		
RT	1100+20	FE	0	0	2		
RT	1105+95	FE	0	0	2		
RT	1109+15	CE	0	0	4		
RT	1110+25	PRA	62	7	0		
LT	1111+90	PRA	48	5	0		
RT	1112+62	PE	8	1	0		
LT	1112+82	MBT	0	0	2	11	
RT	1113+85	PE	0	0	1		
LT	1113+90	MBT	0	0	2	11	
RT	1114+75	PE	0	0	1		
LT	1115+70	MBT	0	0	2	11	
LT	1115+75	PRA	32	3	0		

SIDE	STATION	TYPE	SURFACE REMOVAL, VARIABLE DEPTH (SPECIAL)		INCIDENTAL HOT-MIX ASPHALT SURFACING		LENGTH
			SO YD	TON	TON	FOOT	
RT	1115+75	PRA	47	5	0		
LT	1116+75	CE	0	0	2		
LT	1116+80	MBT	0	0	4	11	
RT	1117+00	PE	0	0	2		
RT	1118+20	PE	0	0	1		
LT	1119+30	MBT	0	0	4	11	
RT	1119+35	PE	0	0	3		
LT	1121+30	FE	0	0	1		
RT	1123+20	PE	0	0	2		
LT	1123+25	MBT	0	0	2	11	
FINAL TOTAL			760	80	122•		

FE=FIELD ENTRANCE  
PE=PRIVATE ENTRANCE  
CE=COMMERCIAL ENTRANCE  
PRA - PUBLIC ROAD APPROACH  
MBT - MAILBOX TURNOUT

•THIS QUANTITY IS FOR THE AGGREGATE FIELD ENTRANCES

MODEL: Default  
FILE: \\blm\c:\pub\blm\room\dat\illindk\pwr\pwr\DOT\Documents\DOT\_Offices\blm\det\_7\Projects\7482\CA\AD\Drawings\DOT\_7482\45-d-entr.dwg

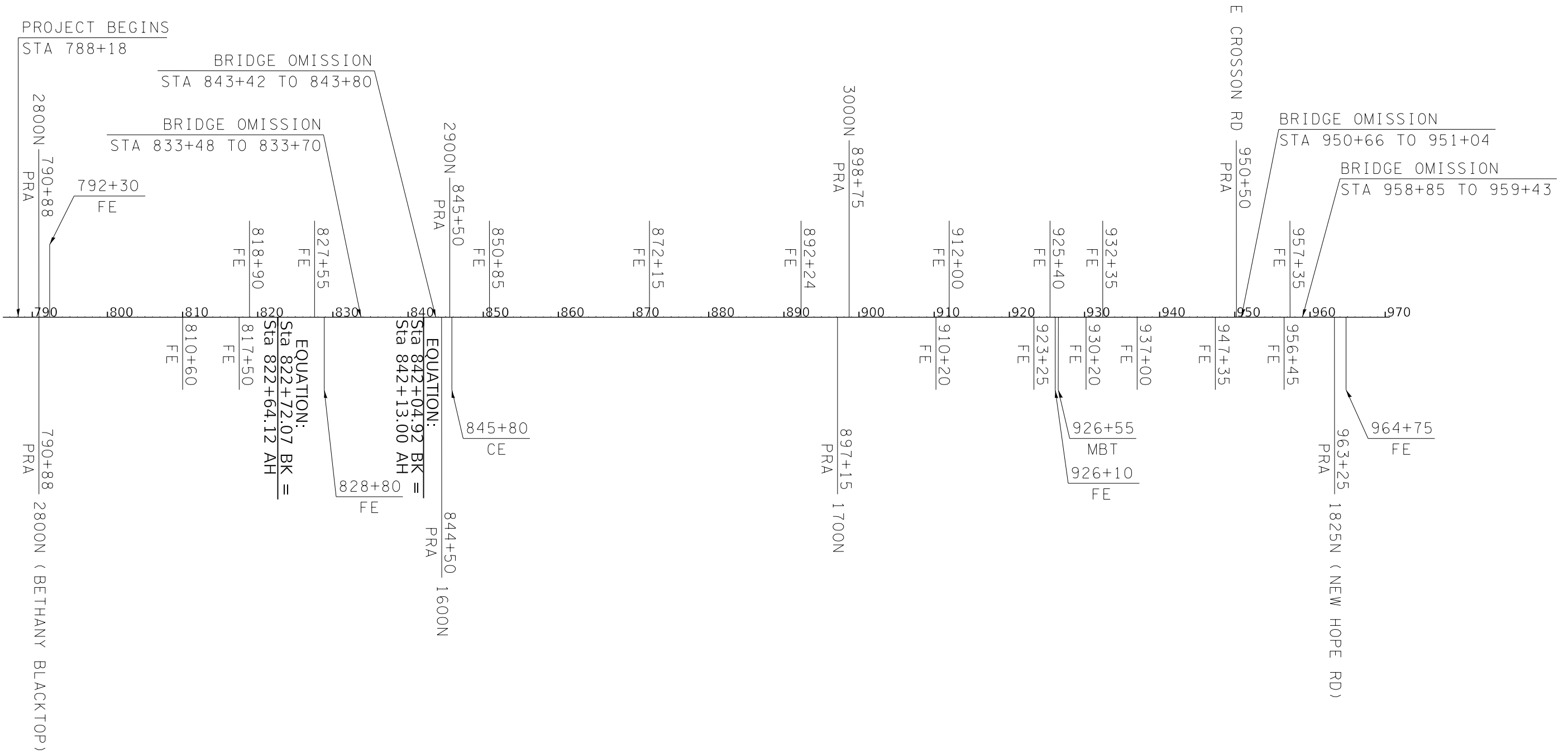
USER NAME = stefenmk	DESIGNED -	REVISED -
PLOT SCALE = 100.0000' / in.	DRAWN -	REVISED -
PLOT DATE = 1/7/2020	CHECKED -	REVISED -
	DATE -	REVISED -

**STATE OF ILLINOIS  
DEPARTMENT OF TRANSPORTATION**

**RURAL ENTRANCES AND MAILBOX TURNOUT DETAILS  
WITH SHOULDERS**

SCALE: SHEET OF SHEETS STA. TO STA.

F.A.P. RTE.	SECTION	COUNTY	TOTAL SHEETS	SHEET NO.
770	(115, 116)RS-4	MOULTRIE	20	12
CONTRACT NO. 74824				
ILLINOIS FED. AID PROJECT				



MODEL: Default  
 FILE: h:\mfc\_p\suplancroom.d\at\illinois.gov\PI\DOT\Documents\IDOT\_Offices\IDOT\7\Projects\74824\CADD\Drawings\74824-4-shc-plan.dgn

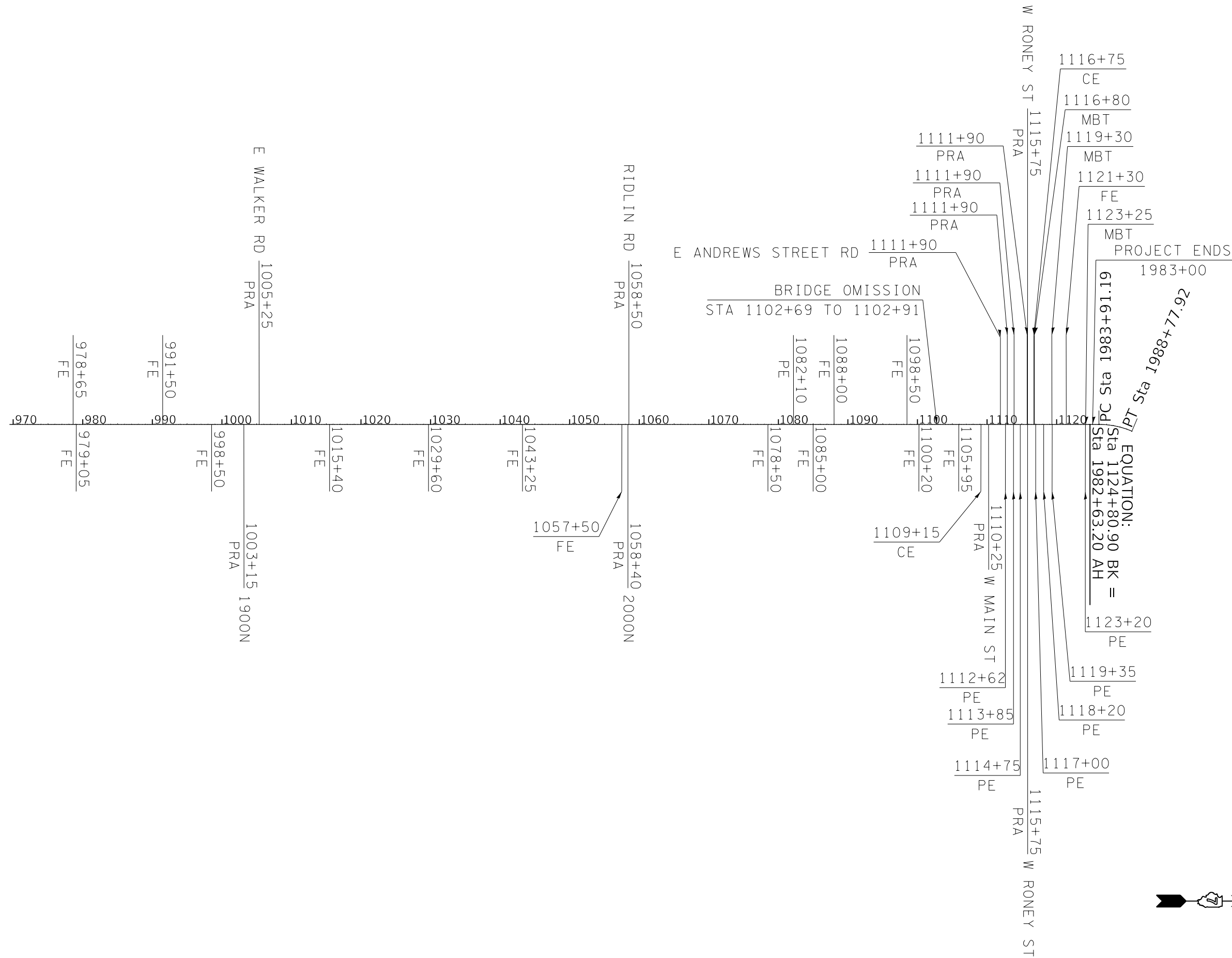
USER NAME = steffemk	DESIGNED -	REVISED -
	DRAWN -	REVISED -
PLOT SCALE = 200.0000' / in.	CHECKED -	REVISED -
PLOT DATE = 1/7/2020	DATE -	REVISED -

**STATE OF ILLINOIS**  
**DEPARTMENT OF TRANSPORTATION**

<b>PLAN SHEET</b>			
SCALE:	SHEET	OF	SHEETS
	STA.		TO STA.

F.A.P. RTE.	SECTION	COUNTY	TOTAL SHEETS	SHEET NO.
770	(115.116)RS-4	MOULTRIE	20	13
			CONTRACT NO. 74824	
		ILLINOIS FED. AID PROJECT		

MODEL: Default  
 FILE: h:\a\c\p\pub\baroom.dwg  
 PROJECT: 174824\CAADDATA\CADD\sheet\DOT\_7\Project\174824\CAADDATA\CADD\sheet\DOT\_7\Project\174824\sheet.dgn



BRIDGE OMISSION  
 STA 1102+69 TO 1102+91

EQUATION:  
 Sta 1124+80.90 BK =  
 Sta 1982+63.20 AH

PT Sta 1988+77.92



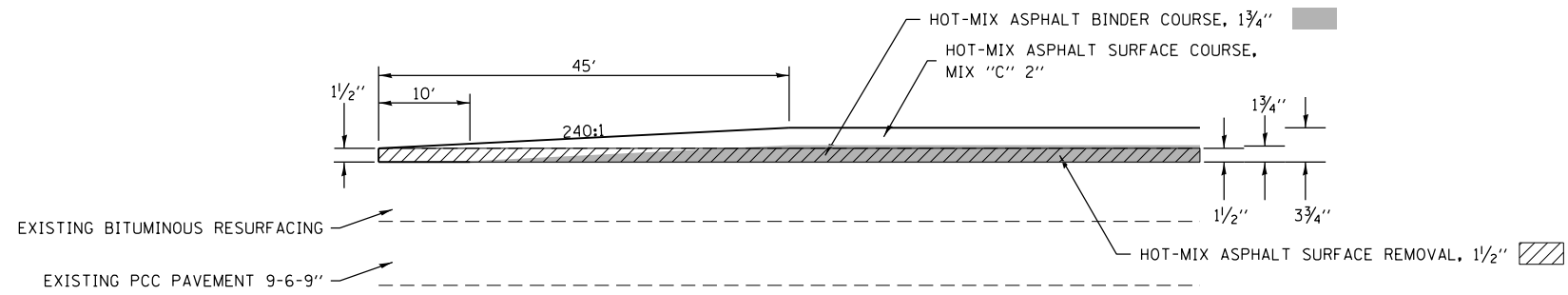
USER NAME = steffemk	DESIGNED -	REVISED -
	DRAWN -	REVISED -
PLOT SCALE = 200.0000 ' / in.	CHECKED -	REVISED -
PLOT DATE = 1/7/2020	DATE -	REVISED -

**STATE OF ILLINOIS  
 DEPARTMENT OF TRANSPORTATION**

**PLAN SHEET**

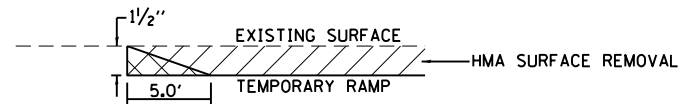
SCALE: SHEET OF SHEETS STA. TO STA.

F.A.P. RTE.	SECTION	COUNTY	TOTAL SHEETS	SHEET NO.
770	(115,116)RS-4	MOULTRIE	20	14
CONTRACT NO. 74824				
ILLINOIS FED. AID PROJECT				



**BUTT JOINT DETAIL**

STA 788+18 TO STA 788+28	STA 951+04 TO STA 951+14
STA 833+38 TO STA 833+48	STA 958+75 TO STA 958+85
STA 833+70 TO STA 833+80	STA 959+43 TO STA 959+53
STA 843+32 TO STA 843+42	STA 1102+59 TO STA 1102+69
STA 843+80 TO STA 843+90	STA 1102+91 TO STA 1103+01
STA 950+56 TO STA 950+66	STA 1982+90 TO STA 1983+00



**TEMPORARY RAMP**

STA 788+18 TO STA 788+23	STA 951+04 TO STA 951+09
STA 833+43 TO STA 833+48	STA 958+80 TO STA 958+85
STA 833+70 TO STA 833+75	STA 959+43 TO STA 959+48
STA 843+37 TO STA 843+42	STA 1102+64 TO STA 1102+69
STA 843+80 TO STA 843+85	STA 1102+91 TO STA 1102+96
STA 950+61 TO STA 950+66	STA 1982+95 TO STA 1983+00

NOT TO SCALE

MODEL: Default  
 FILE: h:\mfc\_2010\pub\harramom.dwg  
 PROJECT: 74824\CADD\Drawings\DOT\_Offices\Detail.ctb  
 PLOT: 1/7/2020 10:54:58 AM  
 PLOT SCALE: 1/100.0000

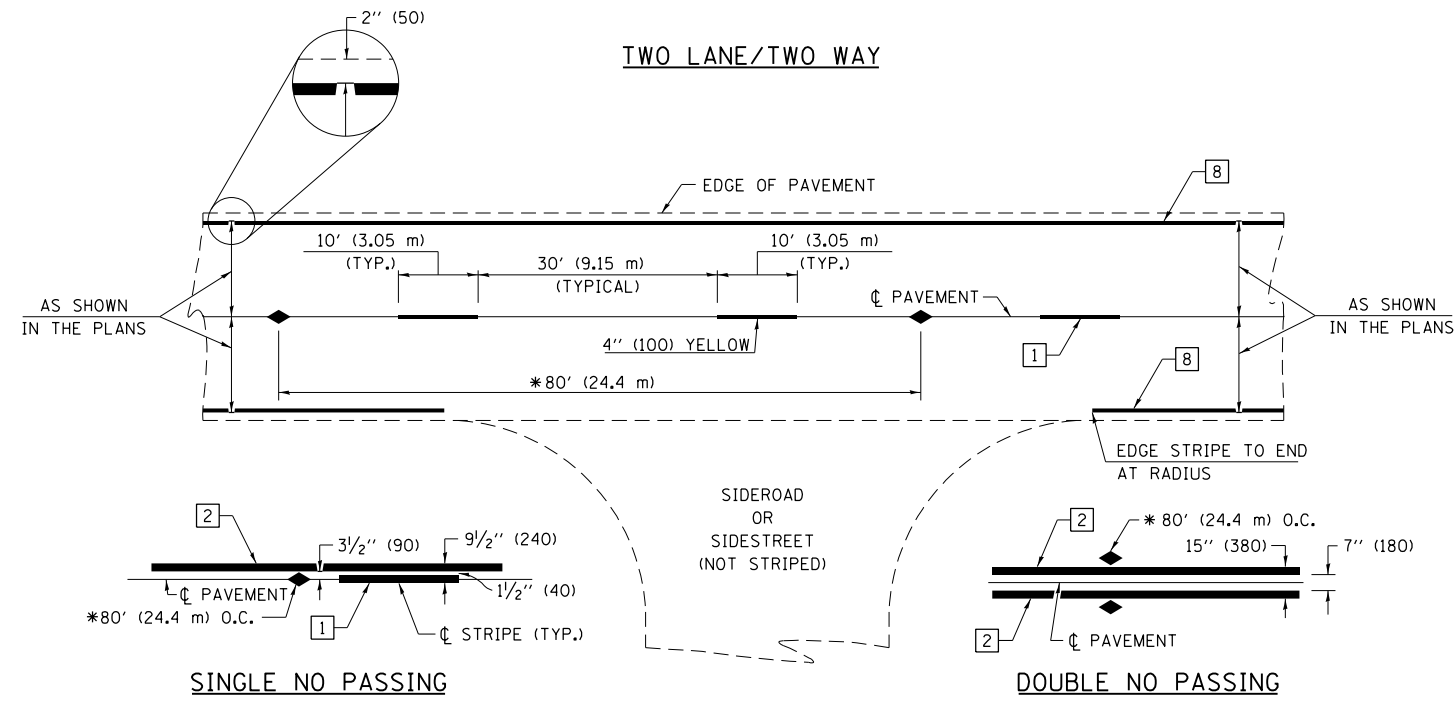
USER NAME = steffenmk	DESIGNED -	REVISED -
	DRAWN -	REVISED -
PLOT SCALE = 100.0000 ' / in.	CHECKED -	REVISED -
PLOT DATE = 1/7/2020	DATE -	REVISED -

**STATE OF ILLINOIS  
DEPARTMENT OF TRANSPORTATION**

**DETAILS**

SCALE: SHEET OF SHEETS STA. TO STA.

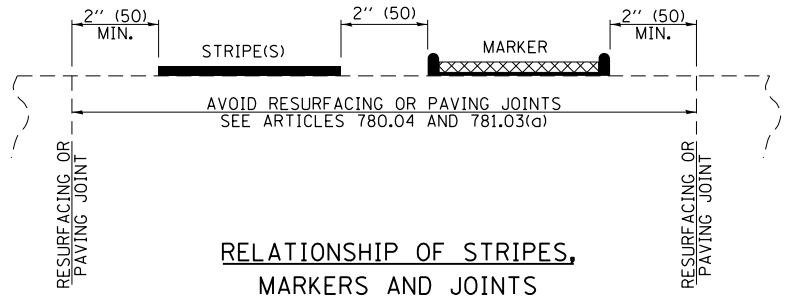
F.A.P. RTE.	SECTION	COUNTY	TOTAL SHEETS	SHEET NO.
770	(115, 116)RS-4	MOULTRIE	20	15
CONTRACT NO. 74824				
ILLINOIS FED. AID PROJECT				



\* REDUCE TO 40' (12.2 m) O.C. ON CURVES WITH POSTED OR ADVISORY SPEEDS OF 45 mph (70 km/h) OR LESS.

PAVEMENT MARKING LEGEND

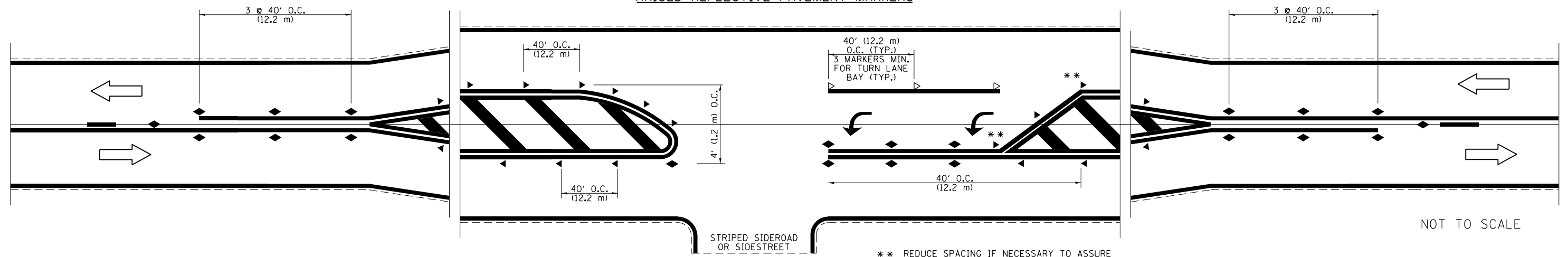
- 1 4" (100) SKIP-DASH (YELLOW)
- 2 4" (100) SOLID (YELLOW)
- 3 12" (300) DIAGONAL (YELLOW)
- 4 4" (100) DOUBLE YELLOW (NARROW)
- 5 12" (300) SOLID WHITE
- 6 RESERVED
- 7 6" (150) SKIP-DASH (WHITE)
- 8 4" (100) SOLID (WHITE)
- 9 12" (300) DIAGONAL (WHITE)
- 10 6" (150) SOLID (WHITE)
- 11 24" (600) STOP BAR (WHITE)
- 12 8" (200) SOLID (WHITE)
- 13 4" (100) PARKING WHITE



TYPICAL PAVEMENT MARKERS LEGEND

- ◆ TWO-WAY AMBER MARKER
- ▶ ONE-WAY AMBER MARKER
- ▷ ONE-WAY CRYSTAL MARKER

RAISED REFLECTIVE PAVEMENT MARKERS



NOT TO SCALE

FILE NAME =	USER NAME = steffenmk	DESIGNED -	REVISED -
pw:\planroom.dot.illinois.gov\PIDOT\Documents\IDOT Offices\District 7\Projects\74824\DRAWN\CADsheets\0774824-shd-details.dgn		REVISOR -	REVISED -
Default	PLOT SCALE = 100.0000' / in.	CHECKED -	REVISED -
	PLOT DATE = 1/7/2020	DATE -	REVISED -

STATE OF ILLINOIS  
DEPARTMENT OF TRANSPORTATION

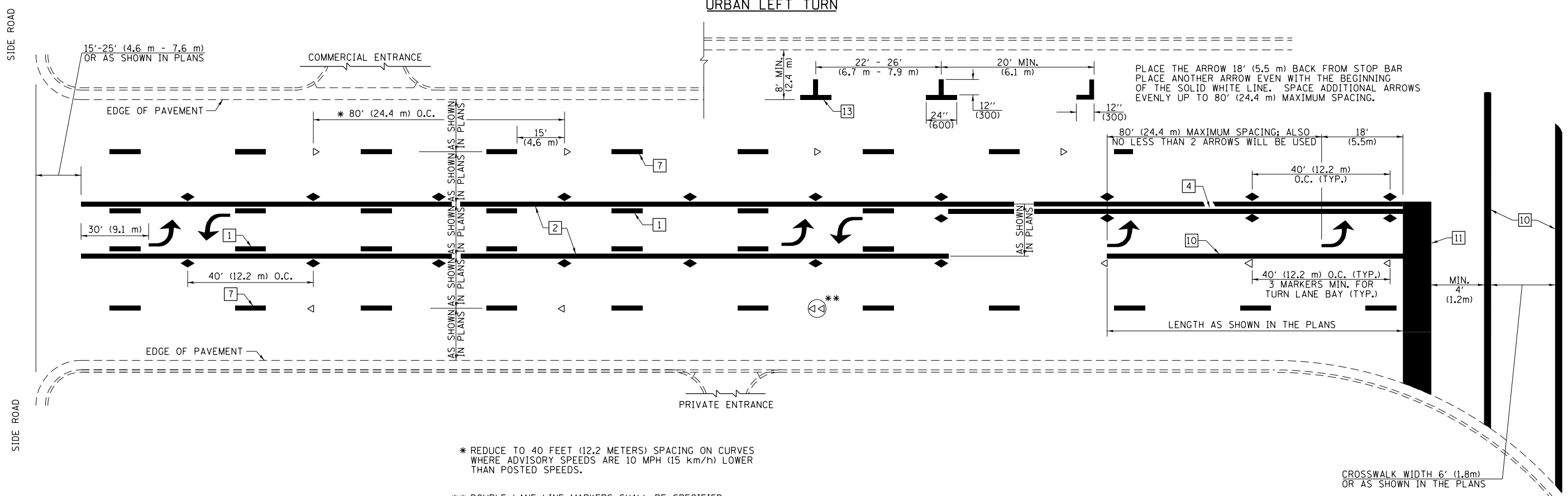
PAVEMENT MARKING AND RAISED REFLECTIVE PAVEMENT MARKERS  
(RURAL & URBAN APPLICATIONS)

DISTRICT 7 DETAIL NO. 7800001				
F.A.P. RTE.	SECTION	COUNTY	TOTAL SHEETS	SHEET NO.
770	(115, 116)RS-4	MOULTRIE	20	16
CONTRACT NO. 74824				
ILLINOIS FED. AID PROJECT				

SCALE: SHEET OF SHEETS STA. TO STA.



URBAN LEFT TURN



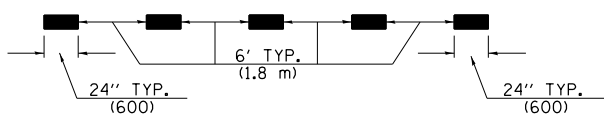
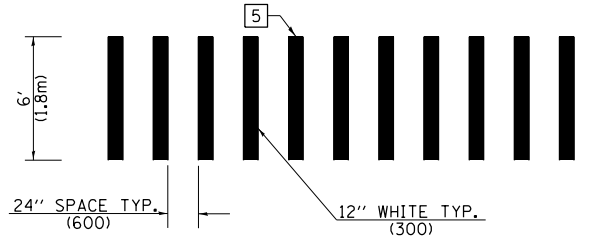
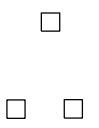
\* REDUCE TO 40 FEET (12.2 METERS) SPACING ON CURVES WHERE ADVISORY SPEEDS ARE 10 MPH (15 km/h) LOWER THAN POSTED SPEEDS.

\*\* DOUBLE LANE LINE MARKERS SHALL BE SPECIFIED AND SPACED AS SHOWN IN HIGHWAY STANDARD 781001 FOR MULTI-LANE DIVIDED AND UNDIVIDED HIGHWAYS.

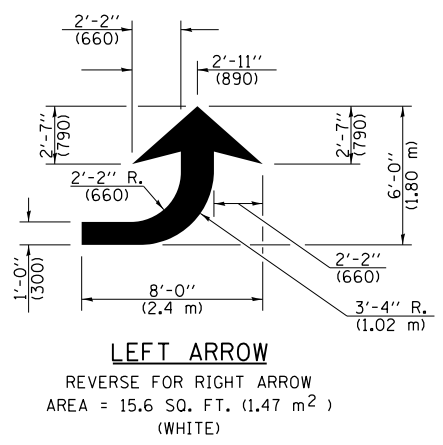
PAVEMENT MARKING LEGEND

- 1 4" (100) SKIP-DASH (YELLOW)
- 2 4" (100) SOLID (YELLOW)
- 3 12" (300) DIAGONAL (YELLOW)
- 4 4" (100) DOUBLE YELLOW (NARROW)
- 5 12" (300) SOLID WHITE
- 6 RESERVED
- 7 6" (150) SKIP-DASH (WHITE)
- 8 4" (100) SOLID (WHITE)
- 9 12" (300) DIAGONAL (WHITE)
- 10 6" (150) SOLID (WHITE)
- 11 24" (600) STOP BAR (WHITE)
- 12 8" (200) SOLID (WHITE)
- 13 4" (100) PARKING WHITE

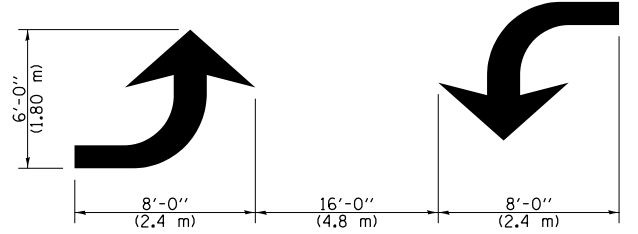
GENERAL NOTES



LANE LINE EXTENSIONS



LEFT ARROW



TYPICAL DOUBLE TURN ARROWS (WHITE)

NOT TO SCALE

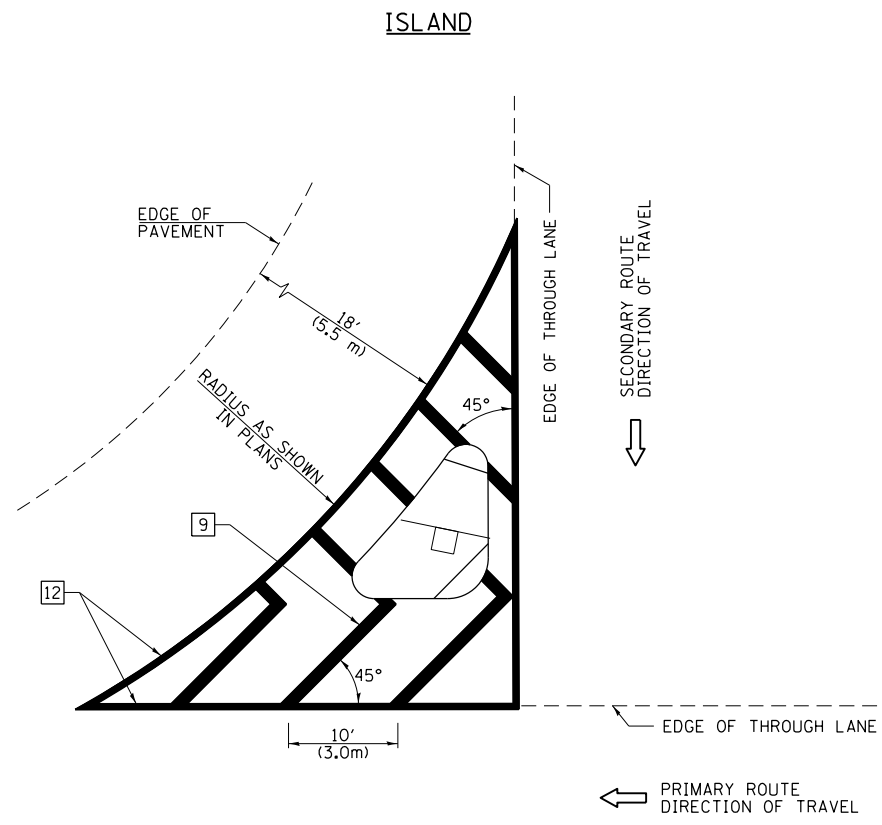
FILE NAME =	USER NAME = steffenmk	DESIGNED -	REVISED -
pw:\planroom.dot\illinois.gov\PWIDOT\Documents\IDOT Offices\District 7\Projects\74824\DRAWN\CADsheets\0774824-sht-details.dwg		REVISIONS	REVISED -
Default	PLOT SCALE = 100.0000' / in.	CHECKED -	REVISED -
	PLOT DATE = 1/7/2020	DATE -	REVISED -

STATE OF ILLINOIS  
DEPARTMENT OF TRANSPORTATION

PAVEMENT MARKING AND RAISED REFLECTIVE PAVEMENT MARKERS  
(RURAL & URBAN APPLICATIONS)

SCALE: SHEET OF SHEETS STA. TO STA.

DISTRICT 7 DETAIL NO. 78000001				
F.A.P. RTE.	SECTION	COUNTY	TOTAL SHEETS	SHEET NO.
770	(115, 116)RS-4	MOULTRIE	20	17
			CONTRACT NO. 74824	
ILLINOIS FED. AID PROJECT				

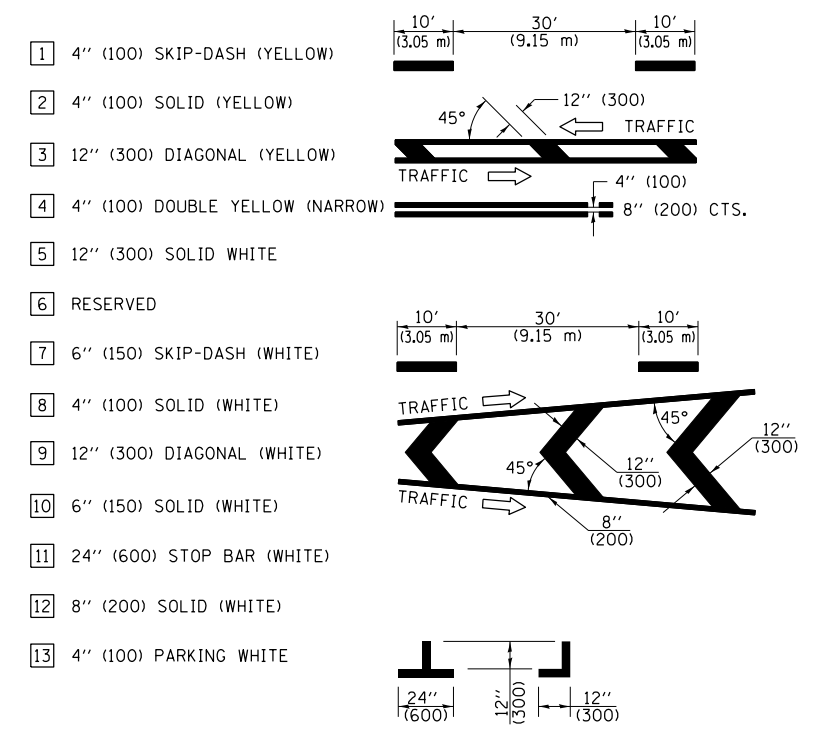


**GENERAL NOTES**

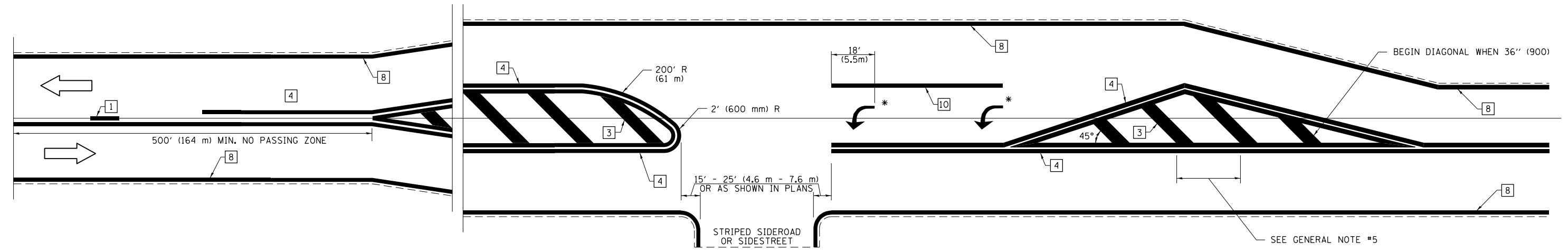
1. RAISED AND CORRUGATED MEDIANS SHALL BE OUTLINED WITH [2] IF PRESENT.
2. SOME OF THE INFORMATION INCLUDED WITH THIS DETAIL MAY NOT BE APPLICABLE TO THIS IMPROVEMENT.
3. PAVEMENT MARKINGS ARE TO BE EXTENDED THROUGH OMISSIONS WHEN APPLICABLE.
4. FINAL PAVEMENT MARKINGS SHALL BE IN PLACE PRIOR TO PLACING ANY RAISED REFLECTIVE PAVEMENT MARKERS.
5. THE FOLLOWING CRITERIA SHALL BE USED FOR SELECTING THE DIAGONAL PAVEMENT MARKING SPACING:
 

< 30 MPH (< 50 km/h)	15' (4.5 m)
30-45 MPH (50-75 km/h)	20' (6.0 m)
> 45 MPH (> 75 km/h)	30' (9.0 m)

**PAVEMENT MARKING LEGEND**



**RURAL LEFT TURN STRIPING**



\* PLACE AN ARROW 18' (5.5 m) BACK FROM STOP BAR. PLACE ANOTHER ARROW EVEN WITH THE BEGINNING OF THE SOLID WHITE LINE. SPACE ADDITIONAL ARROWS EVENLY UP TO 80' (24.4 m) MAXIMUM SPACING. USE MINIMUM OF 2 ARROWS.

NOT TO SCALE

FILE NAME =	USER NAME = steffenmk	DESIGNED -	REVISED -
pw:\planroom.dot.illinois.gov\PIDOT\Documents\IDOT Offices\District 7\Projects\74824\DRAWN\CADsheets\0774824-shd-details.dgn		REVISIONS	REVISIONS
	PLOT SCALE = 100.0000' / in.	CHECKED -	REVISED -
Default	PLOT DATE = 1/7/2020	DATE -	REVISED -

**STATE OF ILLINOIS  
DEPARTMENT OF TRANSPORTATION**

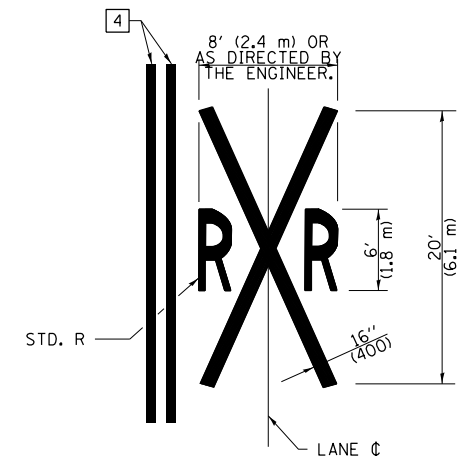
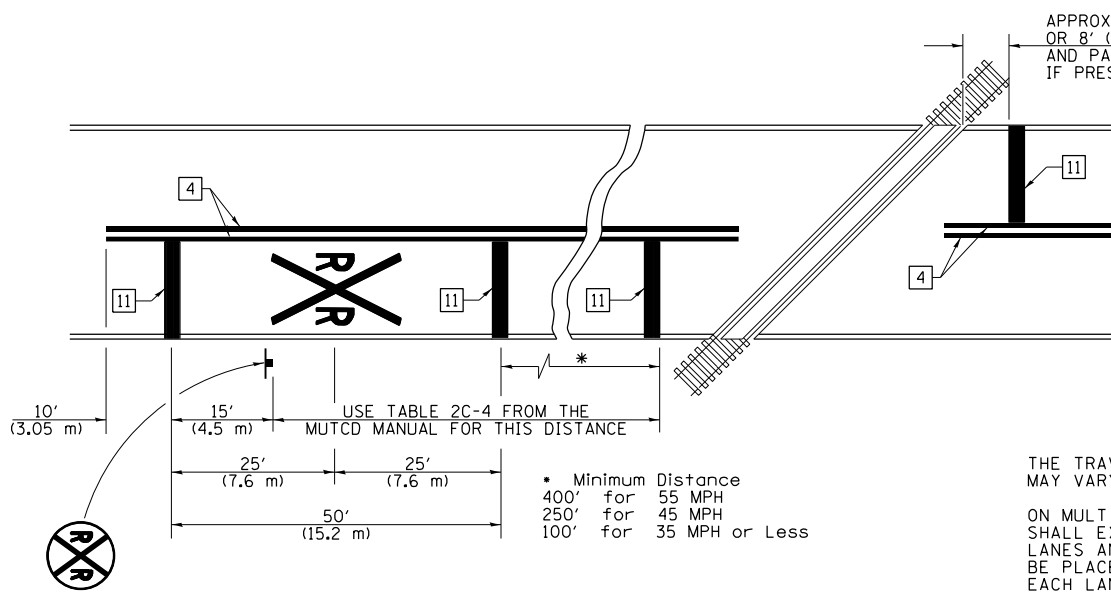
**PAVEMENT MARKING AND RAISED REFLECTIVE PAVEMENT MARKERS  
(RURAL & URBAN APPLICATIONS)**

SCALE: SHEET OF SHEETS STA. TO STA.

<b>DISTRICT 7 DETAIL NO. 7800001</b>				
F.A.P. RTE.	SECTION	COUNTY	TOTAL SHEETS	SHEET NO.
770	(115, 116)RS-4	MOULTRIE	20	18
CONTRACT NO. 74824				
ILLINOIS FED. AID PROJECT				

PAVEMENT MARKINGS AT RAILROAD-HIGHWAY GRADE CROSSING

PAVEMENT MARKING LEGEND



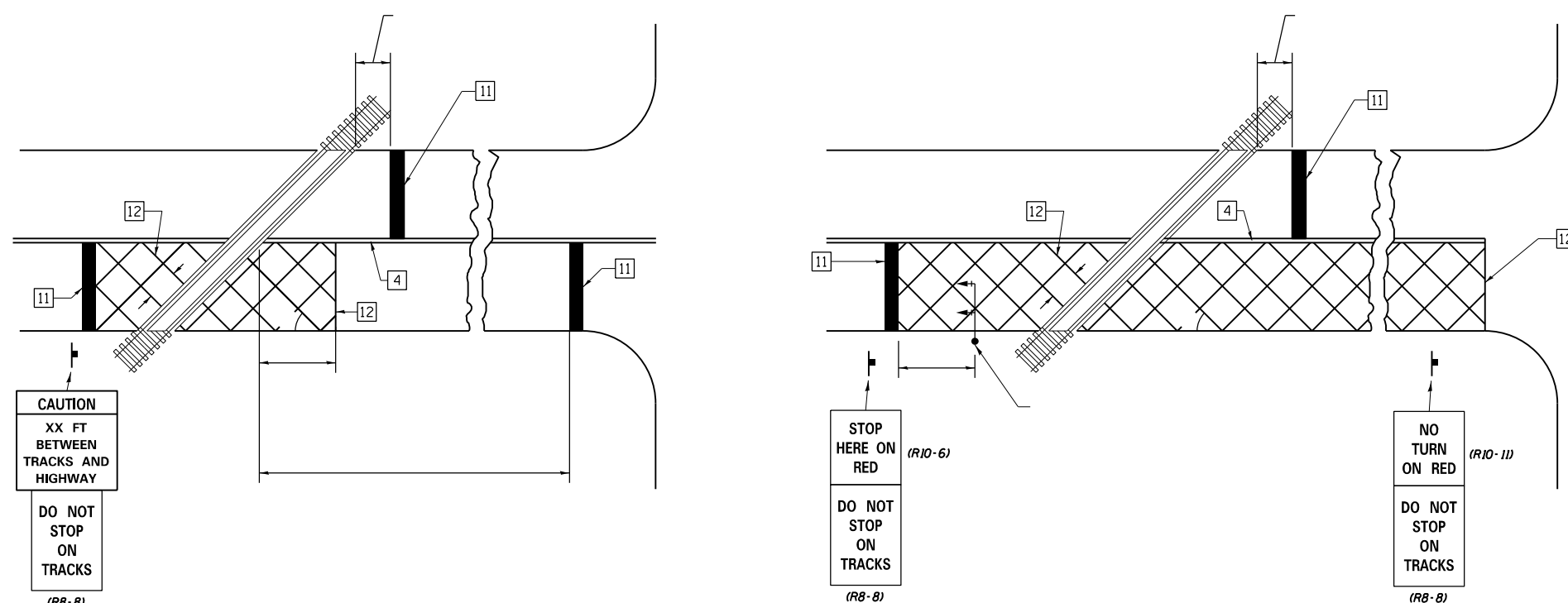
NOTES

THE TRAVERSE SPREAD OF THE "X" MAY VARY ACCORDING TO LANE WIDTH.

ON MULTI-LANE ROADS, THE STOP LINES SHALL EXTEND ACROSS ALL APPROACH LANES AND SEPARATE RXR SYMBOLS SHALL BE PLACED ADJACENT TO EACH OTHER IN EACH LANE.

WHEN THE PAVEMENT MARKING SYMBOL IS USED, A PORTION OF THE SYMBOL SHOULD BE LOCATED DIRECTLY ADJACENT TO THE ADVANCE WARNING SIGN (W10-1) AS PLACED BY TABLE II-1, CONDITION B OF THE MUTCD.

- 1 4" (100) SKIP-DASH (YELLOW)
- 2 4" (100) SOLID (YELLOW)
- 3 12" (300) DIAGONAL (YELLOW)
- 4 4" (100) DOUBLE YELLOW (NARROW)
- 5 12" (300) SOLID WHITE
- 6 RESERVED
- 7 6" (150) SKIP-DASH (WHITE)
- 8 4" (100) SOLID (WHITE)
- 9 12" (300) DIAGONAL (WHITE)
- 10 6" (150) SOLID (WHITE)
- 11 24" (600) STOP BAR (WHITE)
- 12 8" (200) SOLID (WHITE)
- 13 4" (100) PARKING WHITE



SUPPLEMENTAL PAVEMENT MARKING TREATMENT FOR RAILROAD-HIGHWAY GRADE CROSSING

GENERAL NOTES

- SUPPLEMENTAL PAVEMENT MARKINGS TO BE INSTALLED ONLY ON APPROACHES TO INTERSECTIONS CONTROLLED BY TRAFFIC SIGNALS WHICH ARE INTERCONNECTED WITH THE RAILROAD WARNING SIGNALS.
- EXTEND PAVEMENT MARKINGS TO THE INTERSECTION ONLY WHERE NEAR-SIDE TRAFFIC SIGNALS ARE USED.

NOT TO SCALE

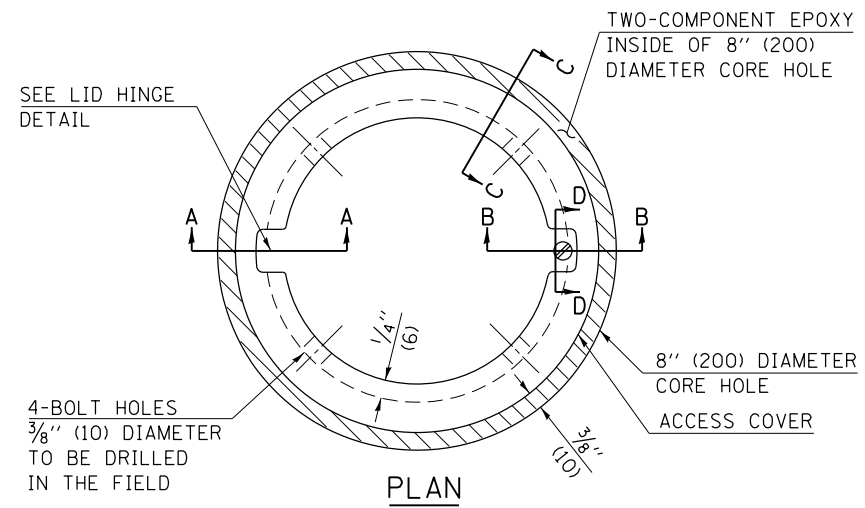
FILE NAME =	USER NAME = steffenmk	DESIGNED -	REVISED -
pw:\planroom.dot.illinois.gov\PIDOT\Documents\IDOT Offices\District 7\Projects\74824\DRAWN\CADsheets\0774824-sht-details.dgn		REVISOR -	REVISED -
Default	PLOT SCALE = 100.0000' / in.	CHECKED -	REVISED -
	PLOT DATE = 1/7/2020	DATE -	REVISED -

STATE OF ILLINOIS  
DEPARTMENT OF TRANSPORTATION

PAVEMENT MARKING AND RAISED REFLECTIVE PAVEMENT MARKERS  
(RURAL & URBAN APPLICATIONS)

SCALE: SHEET OF SHEETS STA. TO STA.

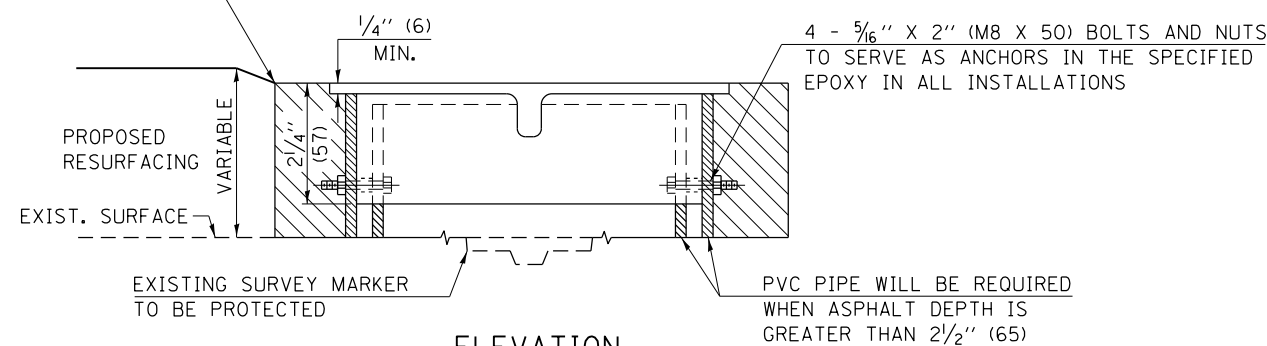
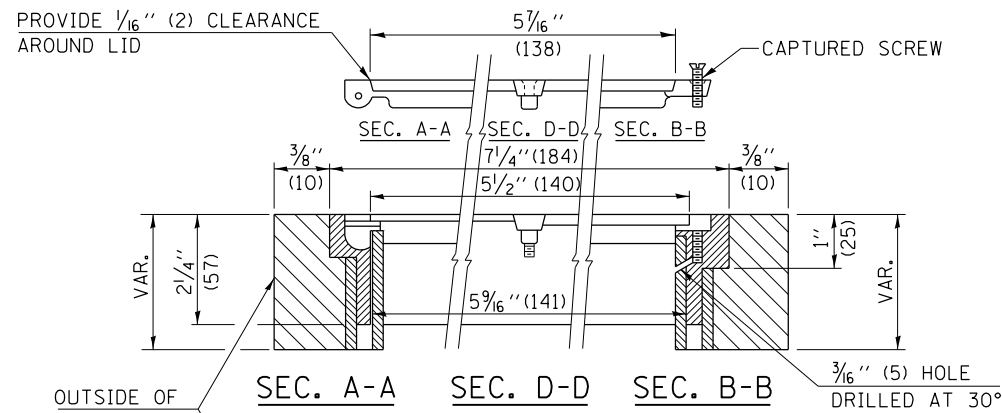
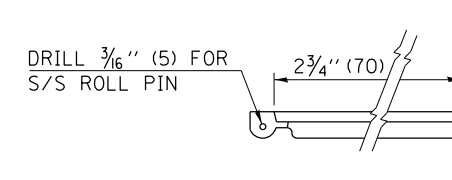
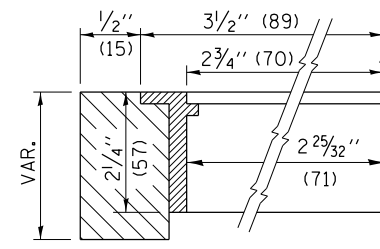
DISTRICT 7 DETAIL NO. 78000001				
F.A.P. RTE.	SECTION	COUNTY	TOTAL SHEETS	SHEET NO.
770	(115, 116)RS-4	MOULTRIE	20	19
CONTRACT NO. 74824				
ILLINOIS FED. AID PROJECT				



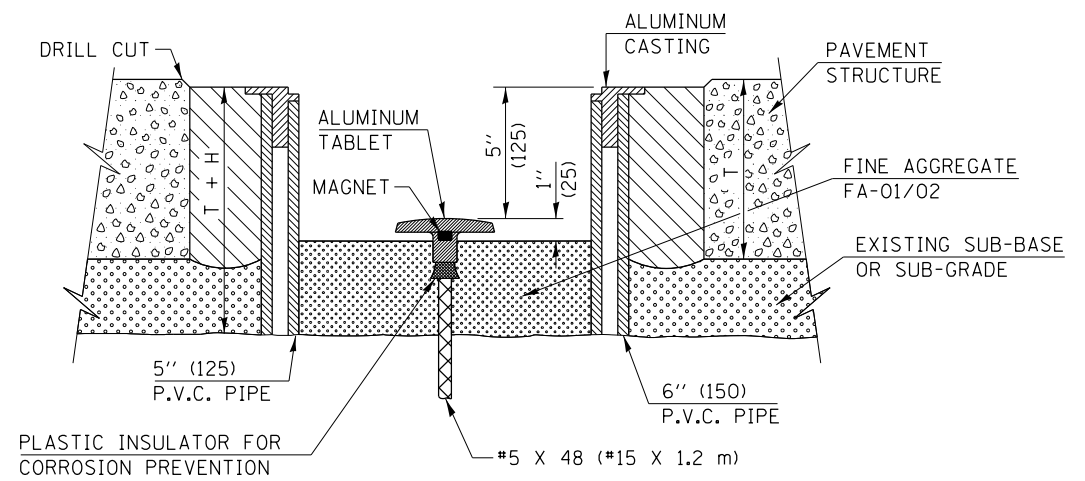
**LEGEND**

- ALUMINUM CASTING
- 5" (125) OR 6" (150) P.V.C. PIPE
- TWO-COMPONENT EPOXY
- T = THICKNESS OF PAVEMENT STRUCTURE
- H = THE THICKNESS OF THE SUB-BASE GRANULAR + 1" (25)

BILL OF MATERIAL	
ALUMINUM CASTING OF THE DIMENSIONS AND SPECIFICATIONS SHOWN OR OTHER SUBJECT TO ENGINEER'S APPROVAL OF SHOP DRAWINGS,	
4 EACH - 5/16" X 2" (M8 X 50) BOLTS WITH NUTS, EPOXY,	
5" OR 6" (125 mm OR 150 mm) DIAMETER P.V.C. PIPE, SCHEDULE 40 (WHEN REQUIRED).	



**EXISTING SURVEY MARKER**



**PROPOSED SURVEY MARKER**

NOT TO SCALE

FILE NAME =	USER NAME = steffennk	DESIGNED -	REVISED -
pw:\planroom.dot.illinois.gov\PIDOT\Documents\IDOT Offices\District 7\Projects\74824\DRAWN\CADsheets\0774824-shr-details.dgn		REVISIONS	REVISIONS
Default	PLOT SCALE = 100.0000' / in.	CHECKED -	REVISED -
	PLOT DATE = 1/7/2020	DATE -	REVISED -

STATE OF ILLINOIS  
DEPARTMENT OF TRANSPORTATION

SURVEY MARKER VAULT

SCALE: SHEET OF SHEETS STA. TO STA.

**DISTRICT 7 DETAIL NO. 20070202**

F.A.P. RTE.	SECTION	COUNTY	TOTAL SHEETS	SHEET NO.
770	(115, 116)RS-4	MOULTRIE	20	20
CONTRACT NO. 74824				
ILLINOIS FED. AID PROJECT				