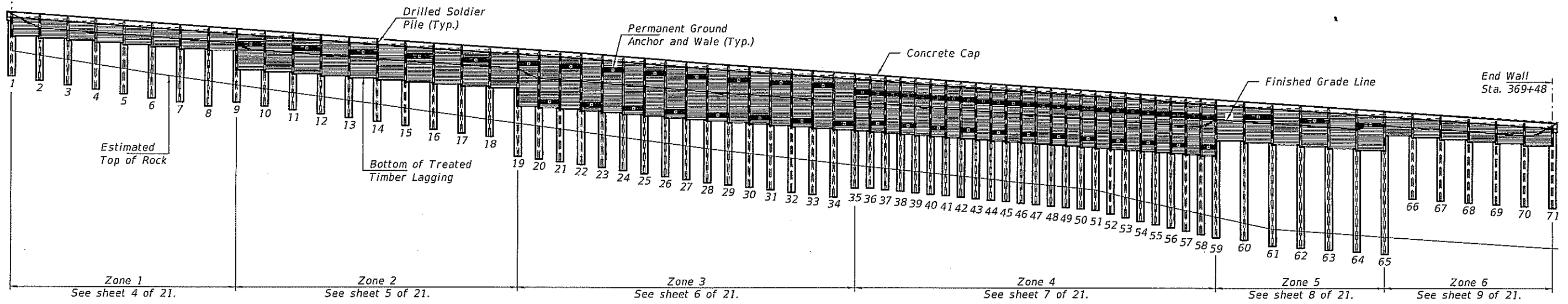
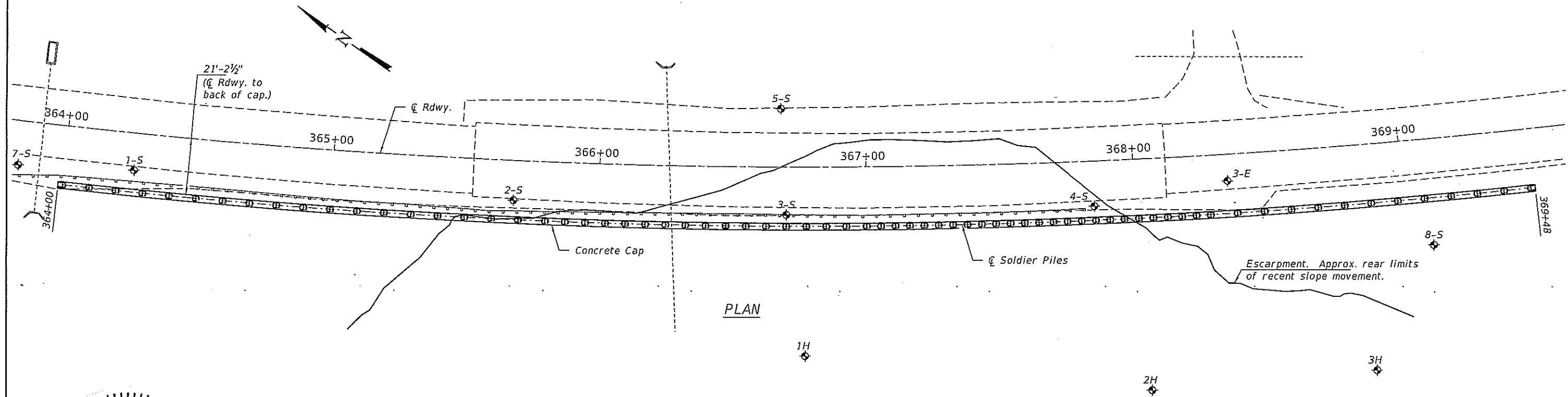


Benchmark: (BM 214) Cut Square In Top of South End of East Headwall of 30" Concrete Pipe. Sta. 357+86; Elev. 686.518

Begin Wall Sta. 364+00



ELEVATION



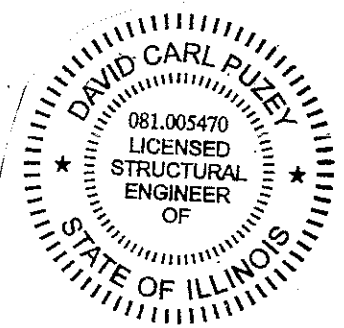
PLAN

**DESIGN SPECIFICATIONS**  
2012 AASHTO Standard Specifications, 8th Edition

**DESIGN STRESSES**  
FIELD UNITS  
fu Ultimate Anchor Bar Stress = 150 ksi  
fpu Ultimate Seven Wire Strand Stress = 270 ksi  
fy Soldier Piles = 50 ksi  
fy Structural Steel = 50,000 psi  
fy Reinforcement = 60,000 psi  
fc Concrete = 3.5 ksi  
Fb Treated Timber Lagging = 1750 psi  
(Dense Select Structural Southern Pine)

**EXISTING CURVE DATA**  
P.I. Sta. 365+02.01  
Δ = 57° 59' 48" (LT)  
D = 2° 15' 55"  
R = 2529.46'  
T = 1402.01'  
L = 2560.40'  
E = 362.56'  
P.C. Sta. 351+00.00  
P.T. Sta. 376+60.40

Notes:  
For Bedrock Geological Profile, see sheets 13 of 21.  
For Boring information, see sheets 14 thru 21 of 21.



EXPIRES 11-30-2020

DESIGNED - <i>William M. Johnson</i>	EXAMINED - <i>Tug A. D. ...</i>	DATE - DECEMBER 6, 2019
CHECKED - <i>Director H. V. ...</i>	PASSED - <i>David Carl Puzey</i>	REVISED 02/25/2020 VHV
DRAWN - <i>Maburdell</i>		REVISED -
CHECKED - <i>VHV</i>		

STATE OF ILLINOIS  
DEPARTMENT OF TRANSPORTATION

PLAN AND ELEVATION  
IL 127 ALTO PASS  
SN 091-W001  
SHEET NO. 1 OF 21 SHEETS

REV. 2-25-2020

F.A.S. RTE.	SECTION	COUNTY	TOTAL SHEETS	SHEET NO.
1909	22 SLP-1	UNION	64	22
CONTRACT NO. 78611			ILLINOIS FED. AID PROJECT	