

159

03-06-2020 LETTING ITEM 159

STATE OF ILLINOIS
DEPARTMENT OF TRANSPORTATION

F.A.I. RTE.	SECTION	COUNTY	TOTAL SHEET NO.
VAR.	(ITS) D6-2019	VARIOUS	3 1
		ILLINOIS	CONTRACT NO. 72L65

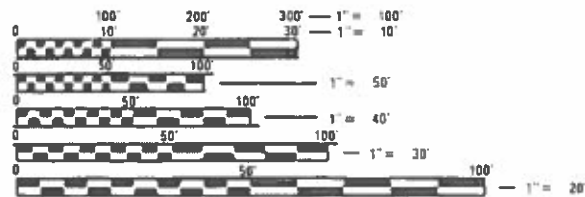
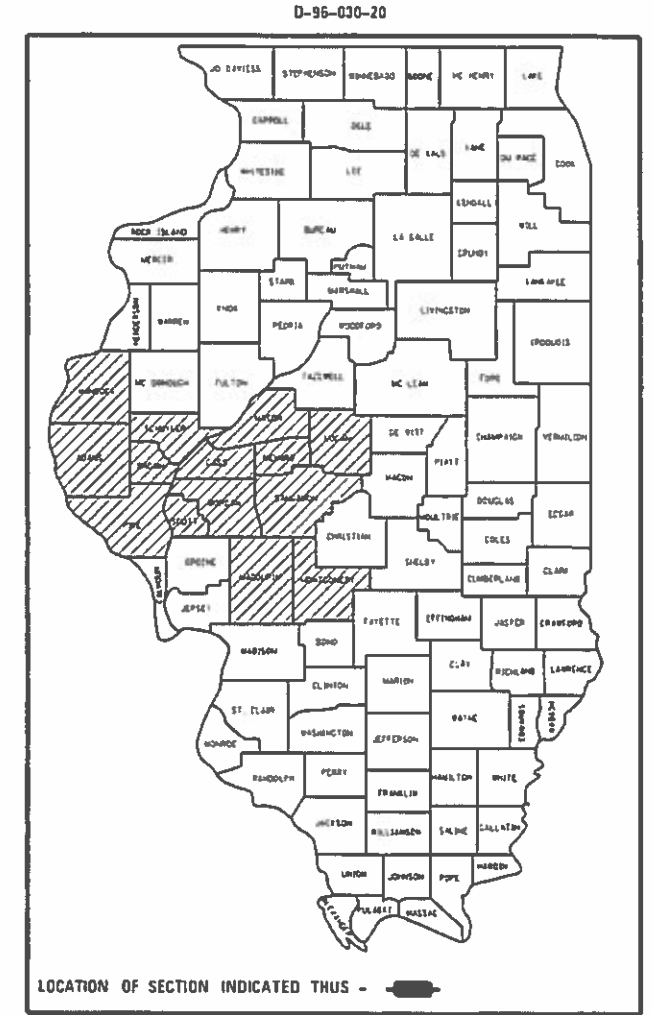
FOR INDEX OF SHEETS, SEE SHEET NO. 2

PROPOSED IMPROVEMENTS

VARIOUS SECTION (ITS) D6-2019 ITS MAINTENANCE

VARIOUS CO.

C-96-050-20



FULL SIZE PLANS HAVE BEEN PREPARED USING STANDARD ENGINEERING SCALES. REDUCED SIZED PLANS WILL NOT CONFORM TO STANDARD SCALES. IN MAKING MEASUREMENTS ON REDUCED PLANS THE ABOVE SCALES MAY BE USED.

J.U.L.I.E.
JOINT UTILITY LOCATION INFORMATION FOR EXCAVATION
1-800-892-0123
OR 811

PROJECT ENGINEER : MIKE IRWIN - (217)524-7765
PROJECT MANAGER : TIM SHARP - (217)524-9160

CONTRACT NO. 72L65

STATE OF ILLINOIS
DEPARTMENT OF TRANSPORTATION

SUBMITTED: January 15, 2020

[Signature] REGION FOUR ENGINEER

[Signature] ENGINEER OF DESIGN AND ENVIRONMENT

[Signature] DIRECTOR OF HIGHWAYS PROJECT IMPLEMENTATION

PRINTED BY THE AUTHORITY OF THE STATE OF ILLINOIS

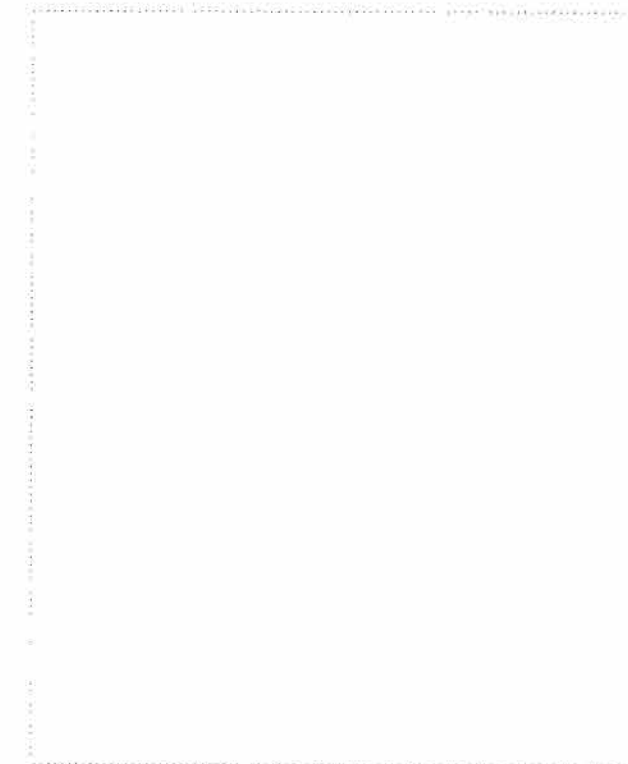
INDEX OF SHEETS

SHEET NO.	DESCRIPTION
1.	COVER SHEET
2.	INDEX OF SHEETS, STANDARDS, GENERAL NOTES & SIGNATURE
3.	SUMMARY OF QUANTITIES

STANDARDS

STANDARD NO.

701001-02
 701006-05
 701106-02
 701201-05
 701206-05
 701301-04
 701400-09
 701401-12
 701406-12
 701421-08
 701422-10
 701446-10
 701451-05
 701456-05
 701601-09
 701606-10
 701701-10
 701901-08



REV. - MS

FILE NAME = S:\CONTRMAINT_CAD\72L65 ITS 2019\PLANS	USER NAME = shorptd 72L65-shr-2-gennote.dgn	DESIGNED - DRAWN - DMS	REVISED - REVISED -	STATE OF ILLINOIS DEPARTMENT OF TRANSPORTATION	INDEX OF SHEETS, STANDARDS GENERAL NOTES, SIGNATURES	F.A. RTE.	SECTION	COUNTY	TOTAL SHEETS	SHEET NO.
Default	PLOT SCALE = 40.0000 / in.	CHECKED -	REVISED -			VAR	(ITS) 06-2019	VARIOUS	3	2
	PLOT DATE = 1/14/2020	DATE -	REVISED -			SCALE: _____ SHEET _____ OF _____ SHEETS STA. _____ TO STA. _____		CONTRACT NO. 72L65 ILLINOIS FED. AID PROJECT		

100%
STATE

XXXXXXXXXX
CONSTR. CODE
0021
VARIOUS
ITS
RURAL

CODE NO.	ITEM	UNIT	TOTAL QUANTITY	
81028340	UNDERGROUND CONDUIT, PVC 1 1/2"	FOOT	10000	10000
81400100	HANDHOLE	EACH	20	20
87900200	DRILL EXISTING HANDHOLE	EACH	10	10
X0326266	ETHERNET SWITCH	EACH	20	20
X0327495	JOURNEYMAN ELECTRICIAN	HOUR	1000	1000
X0327497	PICK-UP TRUCK	HOUR	800	800
X0327499	BUCKET TRUCK (LENGTH 35 TO 65 FEET)	HOUR	600	600
X0327500	ARROWBOARD (TRAILER MOUNTED)	HOUR	100	100
X0327501	ATTENUATOR, CRASH (TRUCK MOUNTED)	HOUR	140	140
X8710036	FIBER OPTIC CABLE 24F 5M	FOOT	10000	10000

REV. - MS

FILE NAME = S:\CONTRACT\INT.CAD\72L65 ITS 2019\PLANS	USER NAME = sharptd	DESIGNED -	REVISED -	STATE OF ILLINOIS DEPARTMENT OF TRANSPORTATION	SUMMARY OF QUANTITIES	F.A. RTE.	SECTION	COUNTY	TOTAL SHEETS	SHEET NO.
72L60-sh1-3-500.dgn	DRAWN - OMS	REVISED -	VAR			(ITS) 06-2019	VARIOUS	3	3	
PLOT SCALE = 10.0000' / in.	CHECKED -	REVISED -	CONTRACT NO. 72L65							
PLOT DATE = 1/14/2020	DATE -	REVISED -	[ILLINOIS] FED. AID PROJECT							
Default				SCALE: _____	SHEET _____ OF _____ SHEETS	STA. _____ TO STA. _____				