

STATE OF ILLINOIS
 DEPARTMENT OF PUBLIC WORKS AND BUILDINGS
 DIVISION OF HIGHWAYS
**PLANS FOR PROPOSED
 FEDERAL AID HIGHWAY**

FEDERAL AID PROJECT NO.	SEC.	COUNTY	SHEET NO.	TOTAL SHEETS
39 14-HB-2	14-HF-2	CHAMPAIGN	14	1
PROJECT		UI-106 (13)		

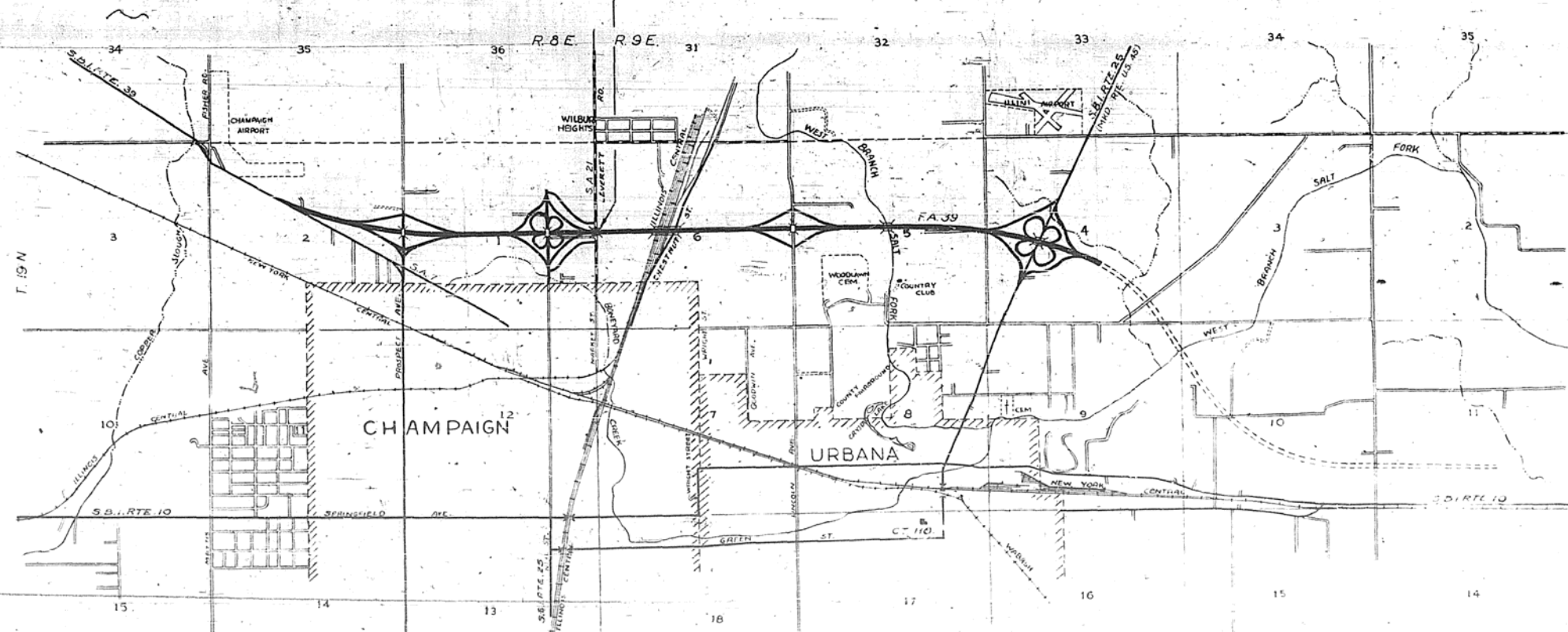


PLAN 1 INCH = 100 FT.
 PROFILE HOR. 1 INCH = 100 FT.
 PROFILE VERT. 1 INCH = 10 FT.
 CROSS-SECTIONS 1 INCH = 5 FT.

14-HB-2
F. A. ROUTE 39, SECTION 14-HF-2 CHAMPAIGN COUNTY
PROJECT UI-106 (13)

SEC. 14-HB-2 INCLUDES A 3-SPAN I-BEAM GRADE SEPARATION STRUCTURE, SPANS 203'3", 10'66"-6" AT STA. 200+06.1, WITH THE EXCEPTION OF FURNISHING, FABRICATING, SHOP PAINTING, & DELIVERY OF THE STRUCTURAL STEEL & METAL HANDRAIL.

SEC. 14-HF-2 INCLUDES FURNISHING, FABRICATING, SHOP PAINTING, & DELIVERY OF THE STRUCTURAL STEEL AND METAL HANDRAIL F.O.B. CHAMPAIGN, FOR A 3-SPAN I-BEAM GRADE SEPARATION STRUCTURE; SPANS 203'3" & 10'66"-6" AT STA. 200+06.1.



LOCATION OF SECTION INDICATED THUS: —

STATE OF ILLINOIS
 DEPARTMENT OF PUBLIC WORKS AND BUILDINGS
 DIVISION OF HIGHWAYS
 December 14, 1955
 C. C. Wondolich
 12-20 55
 Fred Brown
 12-20 55
 C. J. ...
 12-20 55
 W. A. Bartleson
 12-20 55
 Ed Roseman

DEPARTMENT OF COMMERCE
 BUREAU OF PUBLIC ROADS
 APPROVED _____
 DISTRICT ENGINEER DATE

SCALE 1" = 0.38 MILE

ROUTE NO.	SEC.	COUNTY	SHEET NO.	TOTAL SHEETS
FA 39	14-HB-2	CHAMPAIGN	14	2
FED. PROJECT NO. 11-11-100-1 PROJECT				

FOR CONCRETE RAILS

FOR CULVERT HEADWALLS

FOR TRUSSES

FOR STEEL RAILS
For Location of Name Plate - See Plans

SEE DESIGN PLANS
FOR
LETTERING

DETAIL OF
NAME PLATE FOR BRIDGES

SP. 1/16, 2/13 Special

SECTION 14-HB-2

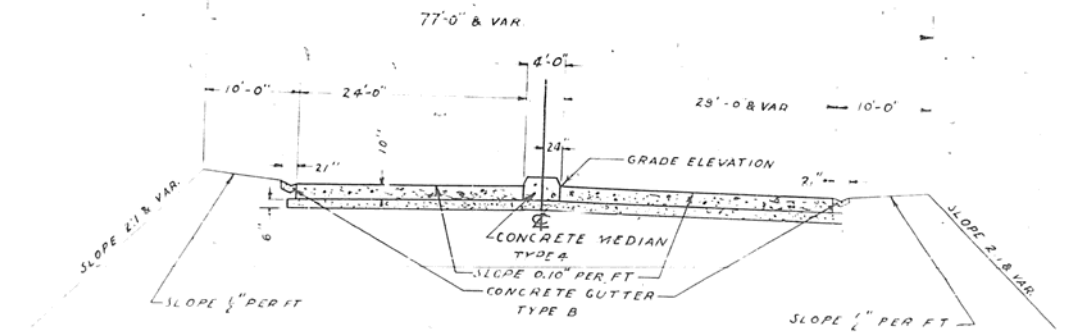
FA 39 14-HB-2 CHAMPAIGN 14 2
F.A. 8 UI-106(13)

Item No.	Description	Quantity	Unit	Estimated Price	Notes
1	Concrete	12,020	cu. yd.		
2	Cover Slab	40			
3	Special	49,457.00	lb.		
4	Special	341.00	sq. ft.		
5-13	Various	116.4	sq. ft.		
14	Various	658	sq. ft.		
		354	sq. ft.		
		12.27	sq. ft.		
		176.2	sq. ft.		

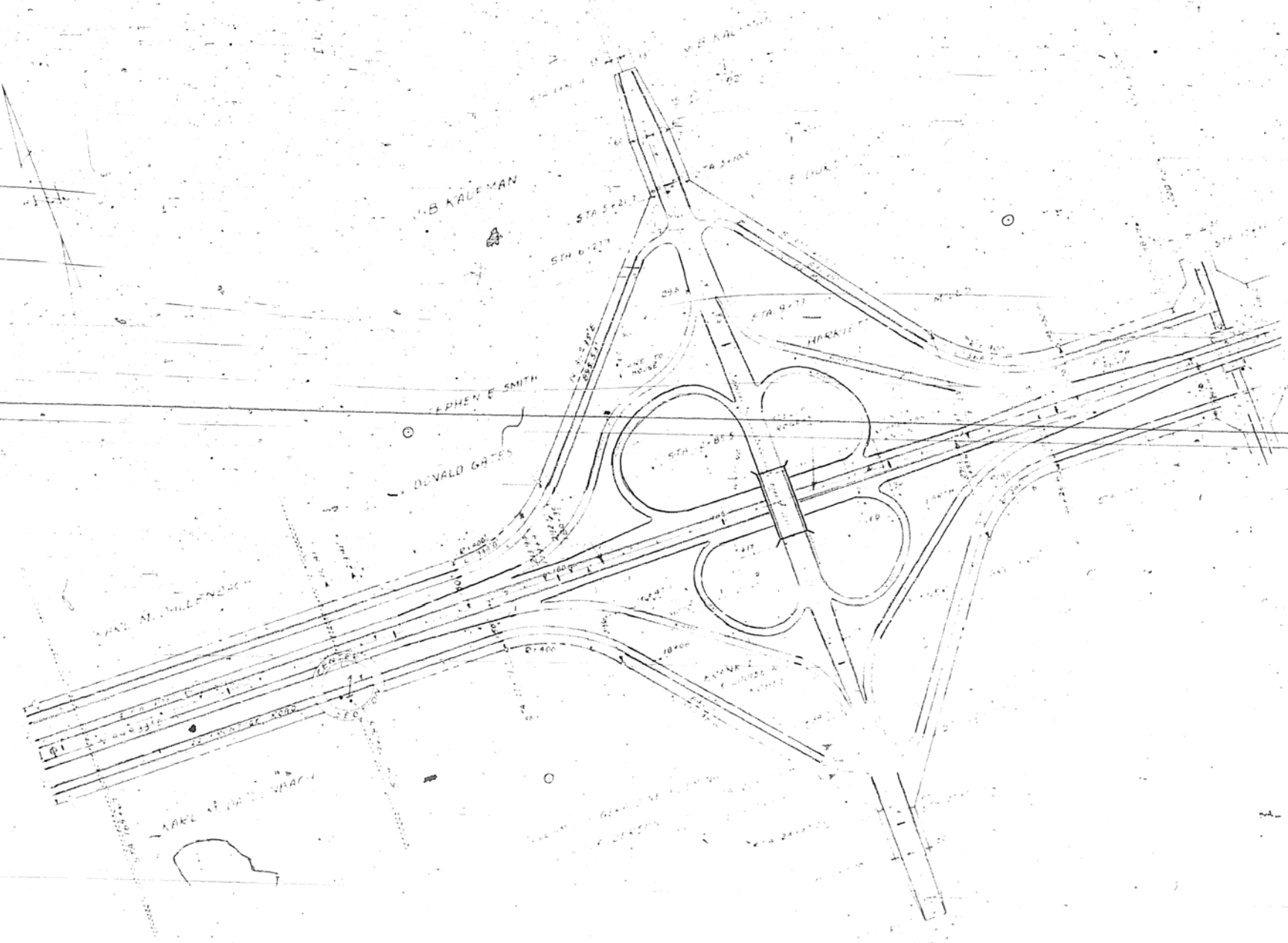
SECTION 14-HB-2

Item No.	Description	Quantity	Unit	Estimated Price	Notes
1	Concrete	12,020	cu. yd.		
2	Cover Slab	40	sq. ft.		
3	Special	49,457.00	lb.		
4	Special	341.00	sq. ft.		
5-13	Various	116.4	sq. ft.		
14	Various	658	sq. ft.		
		354	sq. ft.		
		12.27	sq. ft.		
		176.2	sq. ft.		

TYPICAL CROSS SECTION OF APPROACHES
TO PROPOSED STRUCTURE



FA ROUTE 39
SEC. 14-HB-2
CHAMPAIGN COUNTY
PROJECT 1A 106 (13)
STATION 211 + 00



SPECIAL BRIDGE DESIGN
 A 3-SPAN CONTINUOUS STEEL I-BEAM
 GRADE SEPARATION STRUCTURE ON R.C.
 PILE BENT ABUTMENTS. EACH END
 R.C. PIERS, 24" DIA. X 12' HIGH. 12"
 5'0" WIDE TOP FLANGE BOUND WALLS
 AND TRAFFIC LIGHT RAISED MEDIAN.
 AND 24" DIA. COLUMNS
 3 SPANS - 25' EACH SPAN
 STA 198+00 TO 199+50
 INCLUDED IN SEC. 14-HB-2

NOTE-
 NONE OF THE QUANTITIES SHOWN ON THIS
 SHEET ARE INCLUDED IN SECTION 14-HB-2
 EXCEPT THOSE SO INDICATED.

PROPOSED ROW LINE
 NEALE P. MORTON
 GORDON R. F. HATCH
 E. P. CORNEILUS
 ZISNER GROCERY CO.

SECTION 14-HB-2
 STD. 909 R METHOD I TO BE BUILT USING COMBINATION
 CONCRETE C. & B. GUTTER SPECIAL (SEE SPECIAL DETAIL)
 WIDTH OF APPROACH SLABS 24' VARIABLE
 14' LT. EXT. STA. 199+38.5 TO 199+33.45
 QUANTITIES FOR 2 APPROACH SLABS
 R.C. CONCRETE PAVEMENT (4" C. & 12" F.) 118 SQ YDS
 REINFORCEMENT BARS 435
 CONCRETE MEDIAN TYPE 1 40 LIN. FT.
 COMBINATION CONC. CURB & GUTTER SPECIAL
 LT. STA. 198+30.4 - STA. 199+33.4
 RT. STA. 198+81.4 - STA. 199+33.4
 TOTAL LIN. FT.

STA. 198+00 METHOD I TO BE BUILT WITH 2 C. & B. GUTTERS
 14' EXT. STA. 198+63.75 TO 199+33.45
 QUANTITIES FOR 2 APPROACH SLABS
 R.C. CONCRETE PAVEMENT (4" C. & 12" F.) 118 SQ YDS
 REINFORCEMENT BARS 435
 CLASS X CONCRETE (TRANSITION CURB) 14 SQ YDS
 GUTTER ON TRANSITION CURB TO BE 3' WIDE
 AT BRIDGE
 CONCRETE MEDIAN TYPE 1 40 LIN. FT.
 B.M. 198+00 IN T.P.
 15' INT. STA. 198+00 E.L.V. 114.11

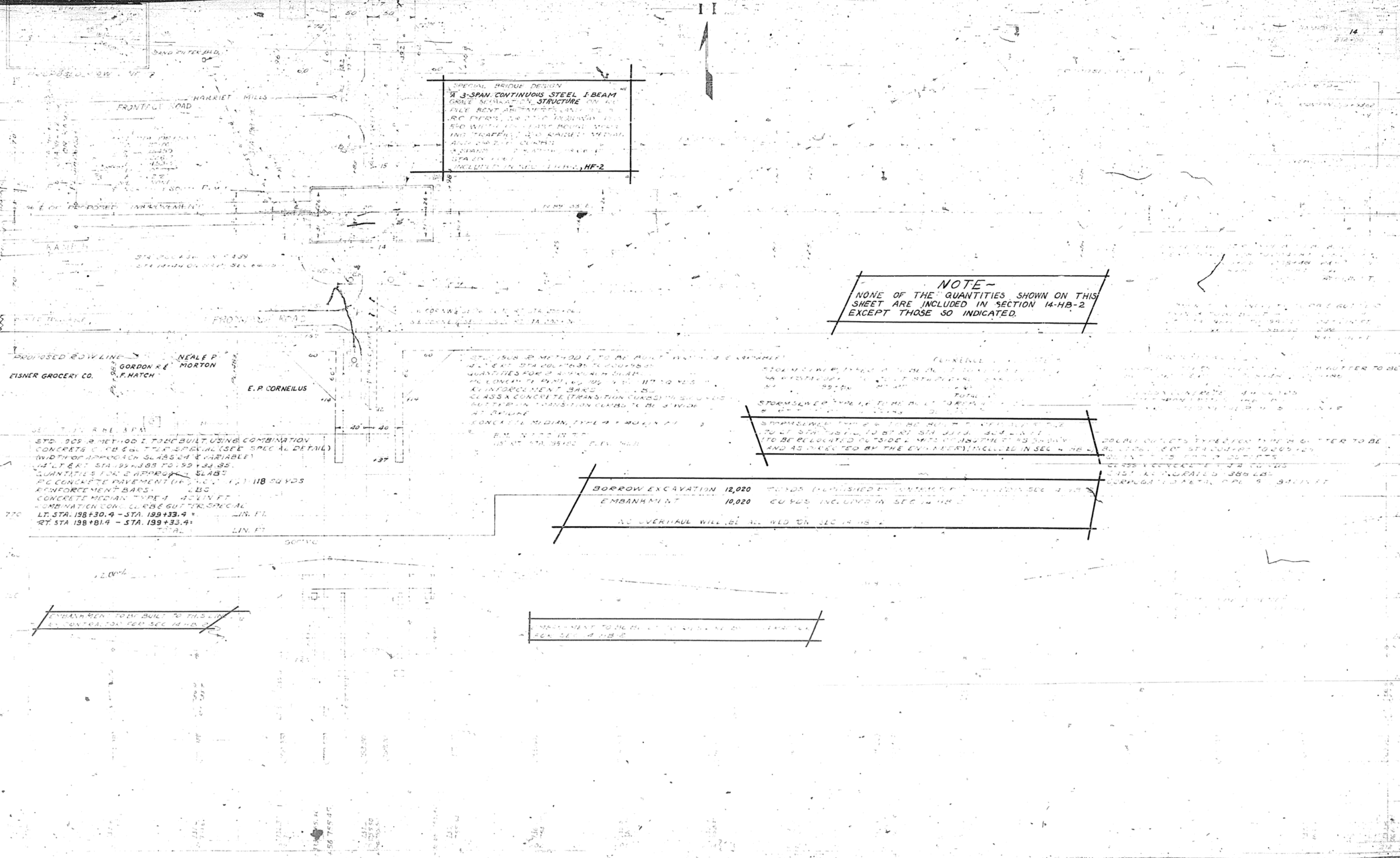
STORMSEWER TYPE 1 TO BE BUILT TO REMAIN
 STORMSEWER TYPE 2 TO BE BUILT TO REMAIN
 TO RT. STA. 198+10.0 TO RT. STA. 198+15.0
 TO BE RELOCATED OUTSIDE 2' MTS. OF STRUCTURE AS SHOWN
 AND AS DIRECTED BY THE ENGINEER, INCLUDED IN SEC. 14-HB-2

BORROW EXCAVATION 12,020 CUBIC YDS. (FURNISHED BY CONTRACTOR) INCLUDED IN SEC. 14-HB-2
 EMBANKMENT 10,020 CUBIC YDS. INCLUDED IN SEC. 14-HB-2
 NO OVERHAUL WILL BE ALLOWED ON SEC. 14-HB-2

EMBANKMENT TO BE BUILT TO THIS LINE
 BY CONTRACTOR FOR SEC. 14-HB-2

EMBANKMENT TO BE BUILT TO THIS LINE
 FOR SEC. 14-HB-2

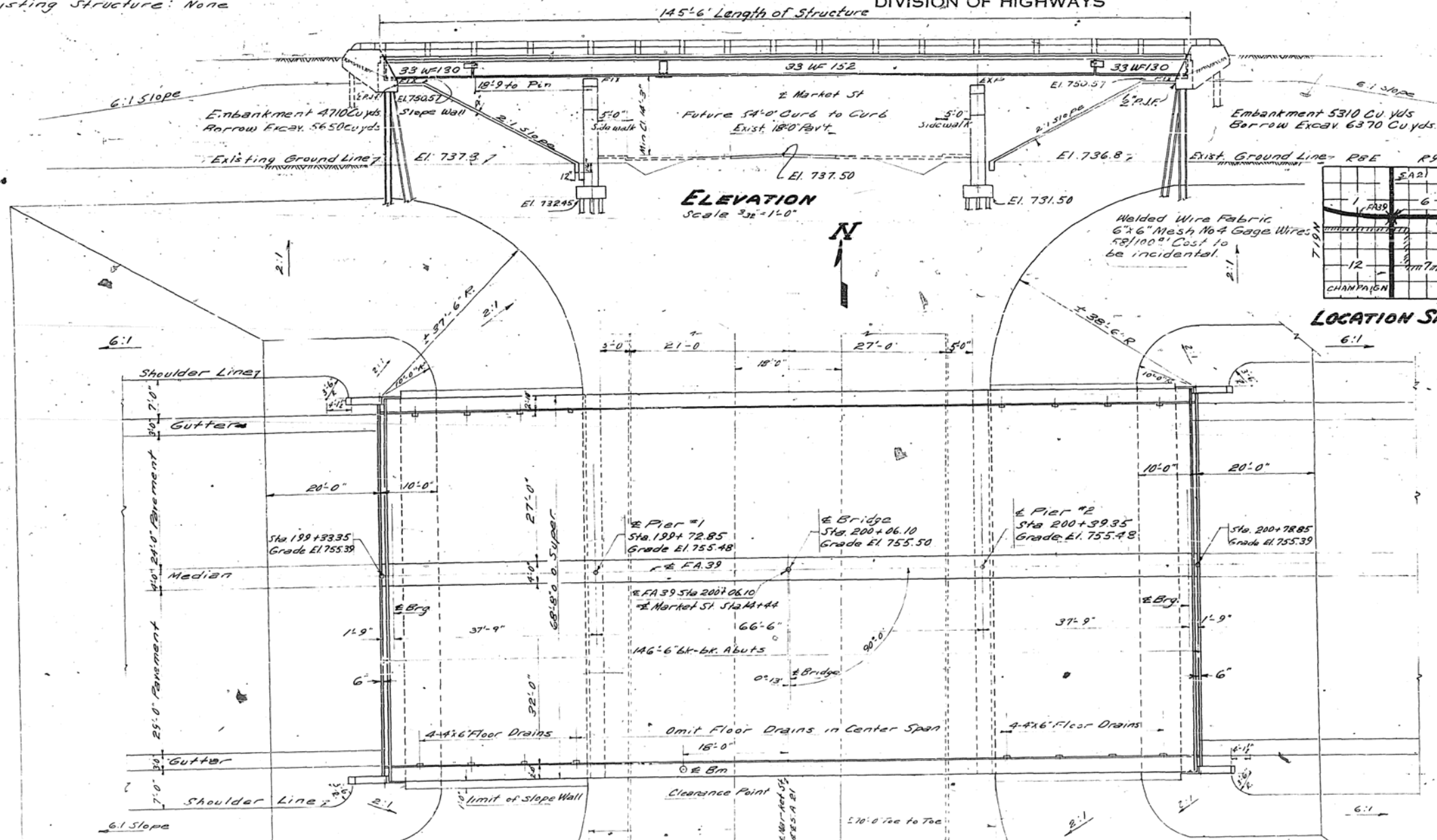
DOUBLE OUTLETS TYPE 2 FOR 18" GUTTER TO BE
 BUILT AT STA. 198+00 TO STA. 198+10.0
 DOUBLE OUTLETS TYPE 2 FOR 18" GUTTER TO BE
 BUILT AT STA. 198+10.0 TO STA. 198+15.0
 CLASS X CONCRETE 14 SQ YDS
 CLASS X CONCRETE 38 SQ YDS
 CORRUGATED METAL CURB 5' 3" HIGH



B.M. Catch Basin, MAR. 90' RT
Sta 199+74 El. 783.52
Existing Structure: None

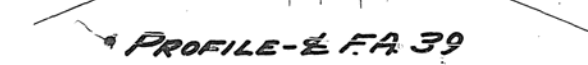
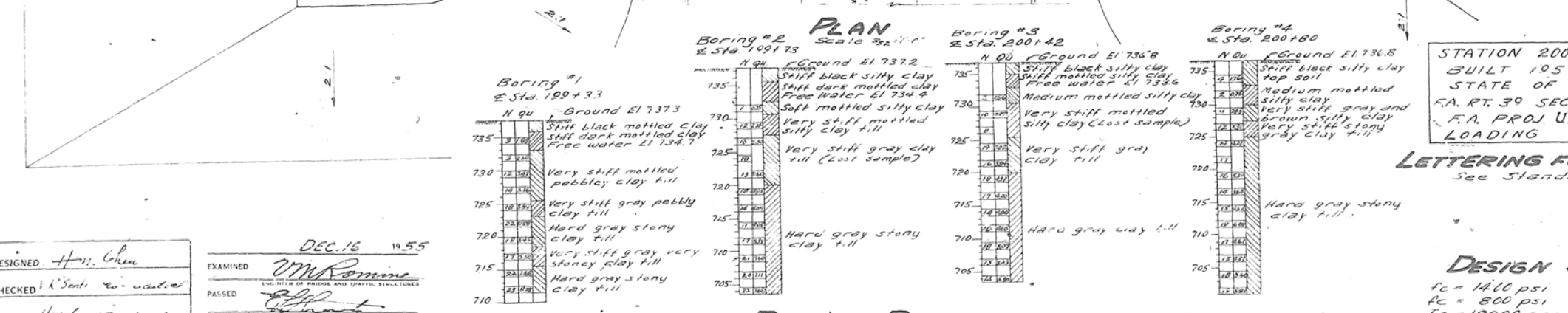
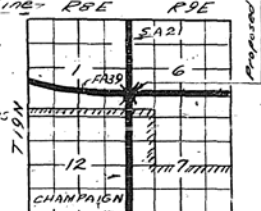
STATE OF ILLINOIS
DEPARTMENT OF PUBLIC WORKS & BUILDINGS
DIVISION OF HIGHWAYS

ROUTE NO.	SECTION	COUNTY	TOTAL SHEETS	SHEET NO.
S.A. 39	14-HB-2	CHAMPAIGN	14	5
FED. ROAD DIST. NO. 1	ILLINOIS	FED. AID PROJECT		9 SHEETS



GENERAL NOTES

Class X Concrete shall be used throughout except as noted. Handrail Concrete shall be used in Abutment Wings. The Concrete Floor Slab shall be finished in accordance with Article 51.18 (a) of the Std. Specs. The Concrete Floor Slab shall be poured in one continuous operation between joints. Layout of Slope Walls may be varied to suit ground conditions in the field as directed by the Engineer. Expansion Guards shall be fabricated and erected in accordance with Art. 51.18(d) of the Std. Specs. Est. Wt. 19,890 lbs. All Packers, Bearing Plates, Lead Plates and Anchor Bolts shall be fabricated and set in accordance with Art. 51.14 of the Std. Specs. and are included for payment as Structural Steel. Except as otherwise provided, all structural steel shall receive one shop coat of red lead paint and two field coats of aluminum paint. See Art. 57.1 to 57.5 inclusive of the Standard Specifications. All Paint shall be furnished and applied by the Contractor involved. All Metal Handrail including Rail Post Anchors is included for payment as 1,500 lbs. of Metal Handrail. The Contract Unit Price per linear foot of Metal Handrail includes the furnishing, installing and painting of the Handrail. The Contractor shall drive two Concrete Test Piles in a permanent location in the abutments and two Timber Test Piles as directed by the Engineer before casting or ordering the remainder of the Piles. Boring Data are shown on the plans only as a guide to the Bidders in estimating soil conditions which may be encountered in the work. Concrete Test Piles shall be driven before embankment is placed. The Contractor shall pre core holes for Concrete Piles down to natural ground elevation before driving. Conc Piles. After driving of Piles the void space around Piles shall be filled with Compacted Sand. Cost to be incidental to driving of Piles. Name Plates shall be in accordance with the details shown on Standard 2113 and located as shown on the Plans.



TOTAL BILL OF MATERIAL

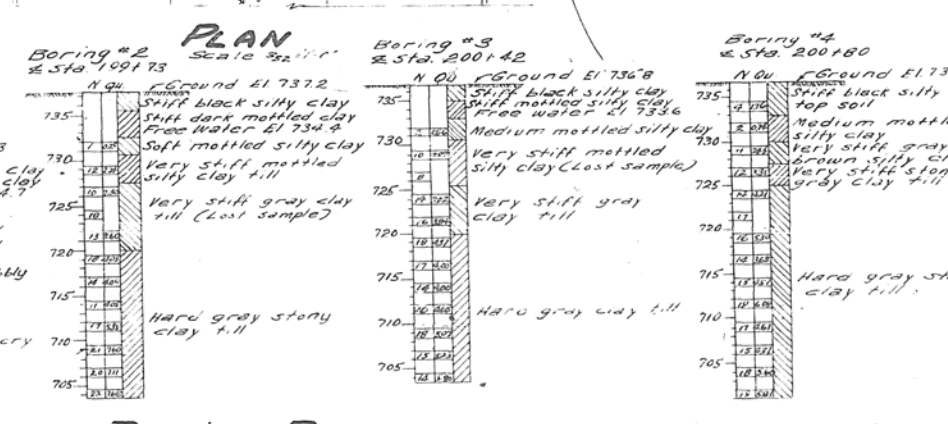
ITEM	QUANTITY	UNIT	TOTAL	SEC.
Class X Concrete	257.2	Cu Yds	359.2	14-HB-2
Handrail Concrete	17.4	Cu Yds	17.4	
Structural Steel	343,930	Lbs.	343,930	343,930
Reinforcement Bars	41,420	Lbs.	75,200	
Name Plates	2	Ea.	2	
Metal Handrail	325.8	Lin Ft.	325.8	325.8
Slope Wall (4")	585	Sq. Yds.	585	
Crested Piles	1200	Lin Ft.	1200	
Test Piles (Timber)	2	Ea.	2	
Concrete Piles (Abutments)	960	Lin Ft.	960	
Test Piles (Concrete)	2	Ea.	2	
Class A Excav for Structure	200	Cu Yds	200	
Borrow Excavation	12,020	Cu Yds	12,020	
Concrete Piles (Wings)	140	Lin Ft.	140	
Class A Concrete	1673	Cu Yds	1673	

STATION 200+06.10
BUILT 195 BY
STATE OF ILLINOIS
FA. RT. 39 SEC. 14-HB-2
FA. PROJ. UI-106(13)
LOADING H20-516

LETTERING FOR NAME PLATE
See Standard 2113

DESIGN STRESSES
f_c = 14,000 psi (SUPER)
f_c = 800 psi (SUB.)
f_s = 18,000 psi (STRUCT.)
f_s = 20,000 psi (REIN.)
n = 10

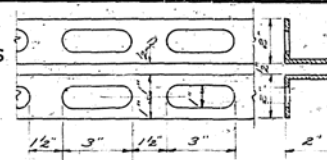
LOADING H20-516-44



BORING DATA
Note: N = Blows per foot of penetration of sampling spoon. Hammer Wt. 350 lbs. Drop 12 inches
qu = Unconfined compressive strength in tons per square foot.

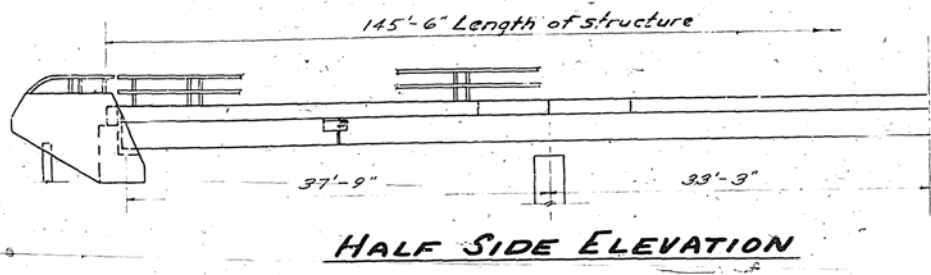
DESIGNED: H.M. Green
CHECKED: K. Senti
DRAWN: H.M. Green
APPROVED: R.L. Paulson
DEC. 16 1955

GENERAL PLAN & ELEVATION
GRADE SEPARATION OVER
S.A. RT. 21 (MARKET STREET)
FA. PROJ. UI-106(13)
FA. RT. 39 SEC. 14-HB-F-2
CHAMPAIGN COUNTY
STA. 200+06.10



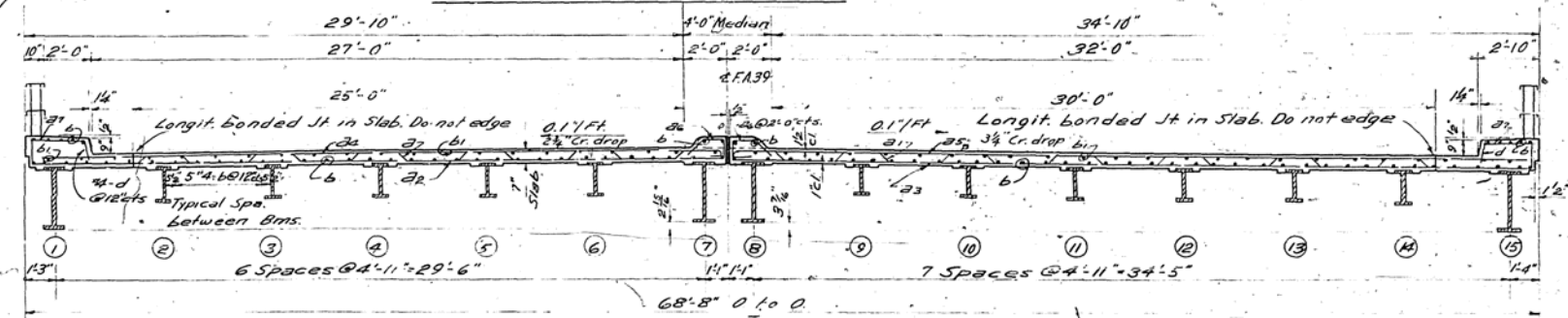
Note: Copper Seal shall be 16 oz. Cold Rolled Annealed Copper with perforated flanges. Splices, if necessary, shall be soldered or brazed. The cost of Copper Seal shall be included in the unit price per cu yd. for Class X Concrete.

ROUTE NO.	SECTION	COUNTY	TOTAL SHEETS	SHEET NO.
39	14-HB-F-2	CHAMPAIGN	8	6

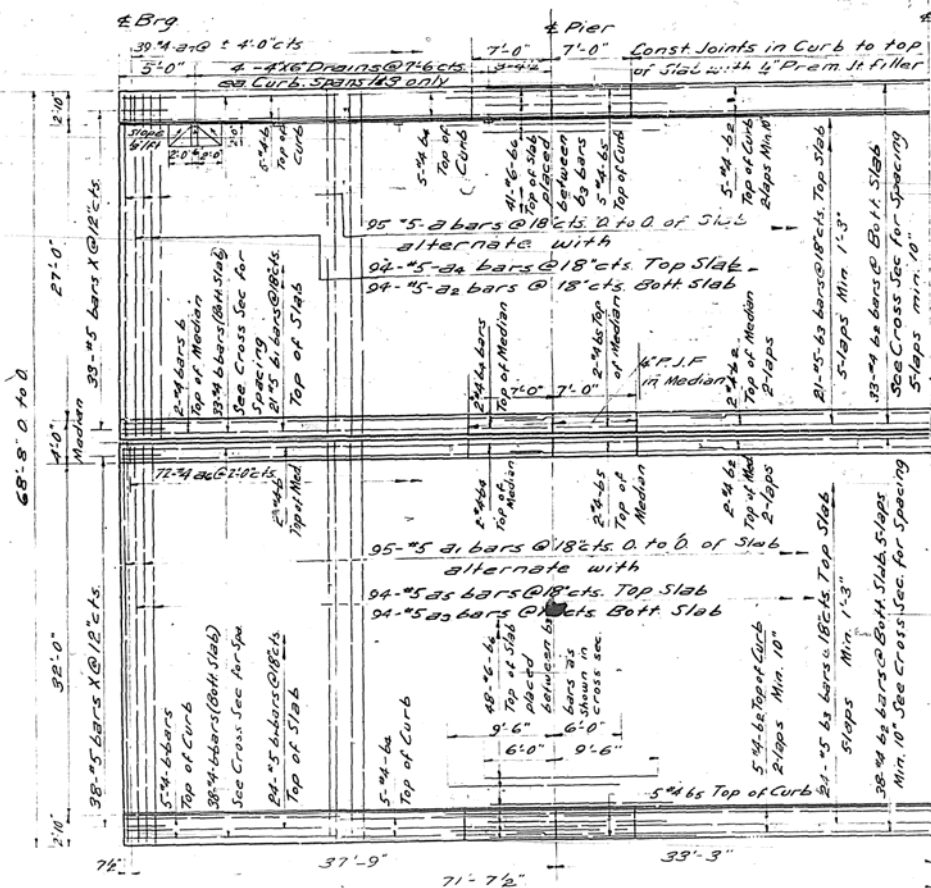


HALF SIDE ELEVATION

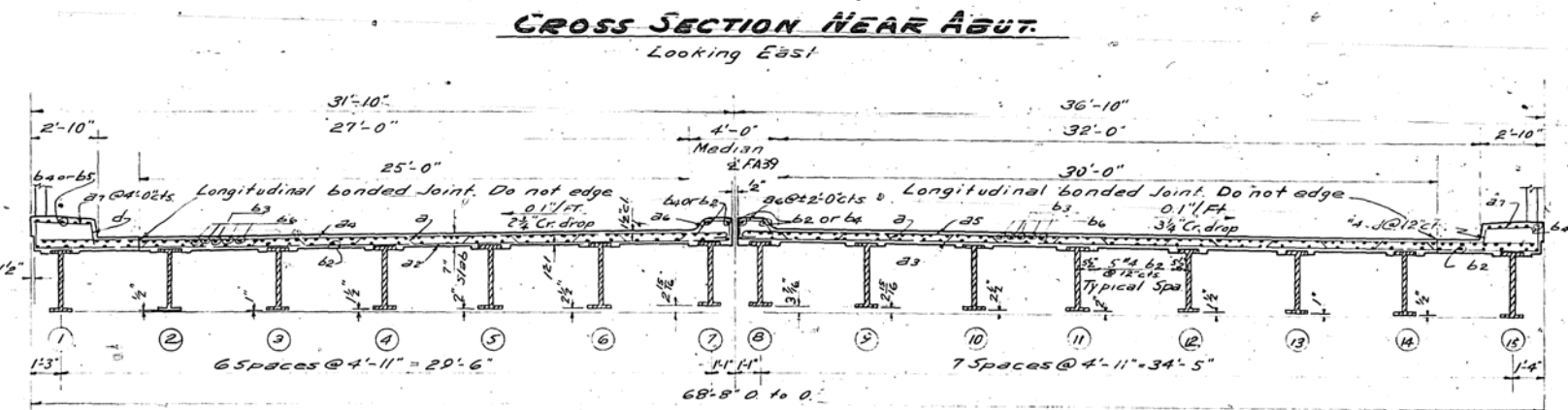
For Handrail Detail See Sheet #6



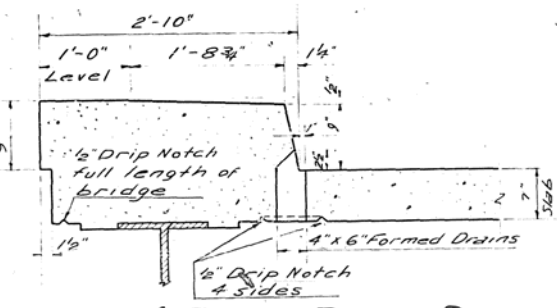
CROSS SECTION NEAR ABUT. Looking East



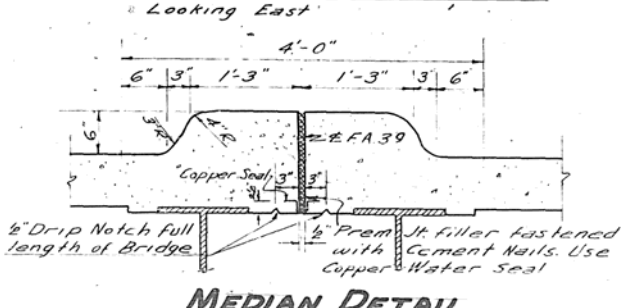
HALF PLAN



CROSS SECTION NEAR PIER Looking East



CURB & FLOOR DRAIN DETAIL

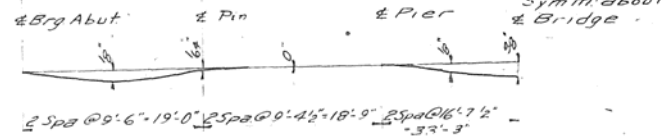


MEDIAN DETAIL TYPE 4 STANDARD 2122

BILL OF MATERIAL-SUPER.

BAR	No.	SIZE	LENGTH	SHAPE
a	95	#5	34'-0"	U
a1	95	#5	30'-4"	U
a2	94	#5	32'-6"	U
a3	94	#5	37'-6"	U
a4	94	#5	31'-6"	U
a5	94	#5	36'-6"	U
a6	156	#4	7'-10"	U
a7	78	#4	2'-6"	U
b	170	#4	10'-3"	U
b1	90	#5	19'-3"	U
b2	468	#4	18'-0"	U
b3	270	#5	18'-3"	U
b4	28	#4	18'-6"	U
b5	28	#4	6'-9"	U
b6	178	#6	15'-6"	U
d	294	#4	1'-0"	U
x	142	#5	4'-3"	U

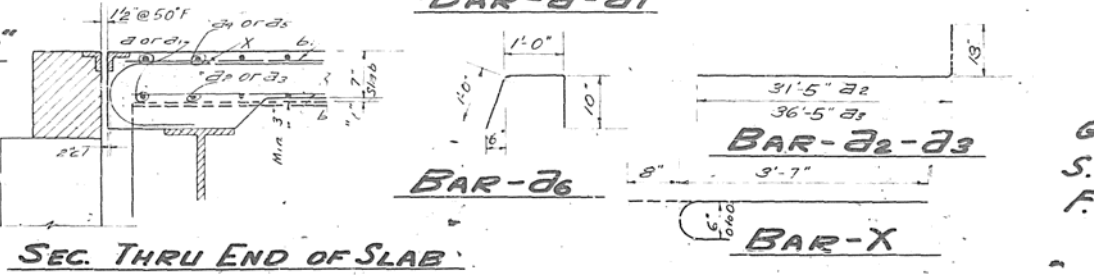
Class X Concrete Cu Yds 257.2
Reinforcement Bars Lbs 71,120
Structural Steel Lbs 343,950



DEAD LOAD DEFLECTION DIAGRAM

METHOD OF DETERMINING FILLET HEIGHTS 't'

After all Structural Steel has been erected, elevations of the top flanges of the beams shall be taken at intervals not to exceed 10ft. From these elevations subtract the increment of deflection for these points determined from the DL deflection diagram. The elevations so obtained subtracted from the theoretical grade elevations, minus floor thickness, equals the fillet heights above top of beam.



SEC. THRU END OF SLAB

SUPERSTRUCTURE
GRADE SEPARATION OVER
S.A. RT. 21 (MARKET STREET)
F.A. RT. 39 SEC. 14-HB-F-2
CHAMPAIGN COUNTY
STATION 200+06.10

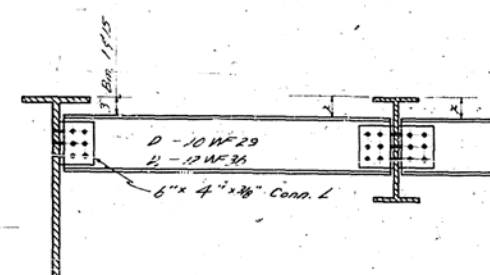
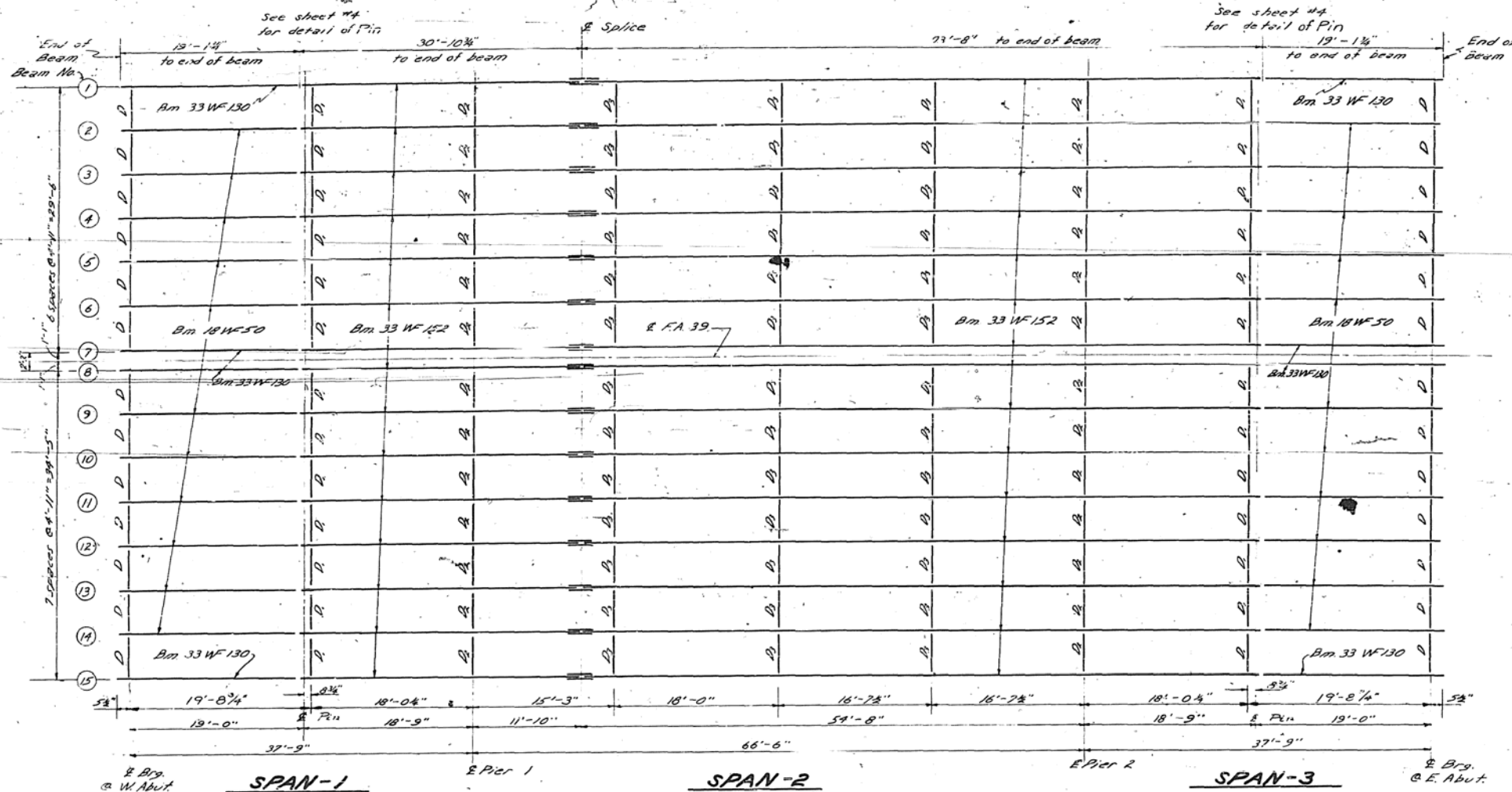
DESIGNED	H. W. Chen
CHECKED	V. J. Santolucito
DRAWN	H. L. Sandoval
INCHES	1/4" = 1'-0"

EXAMINED	DEC. 16 1955
PASSED	M. Romo
APPROVED	R. L. Bateman

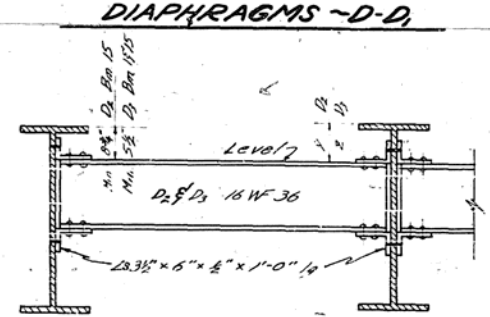
STATE OF ILLINOIS
DEPARTMENT OF PUBLIC WORKS & BUILDINGS
DIVISION OF HIGHWAYS

ROUTE NO.	SECTION	COUNTY	TOTAL SHEETS	SHEET NO.
39	14-HB-2	CHAMPAIGN	8	7
FED. ROAD DIST. NO. 1		ILLINOIS	FED. AID PROJECT	

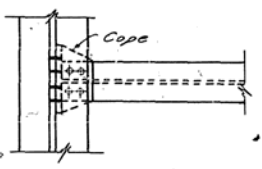
SHEET NO. 3
9 SHEETS



- x = 3 1/2" @ Bm. 2 & 14
- x = 4" @ Bm. 3 & 13
- x = 4 1/2" @ Bm. 4 & 12
- x = 5" @ Bm. 5 & 11
- x = 5 1/2" @ Bm. 6 & 10
- x = 6" @ Bm. 7 & 9
- x = 6 3/8" @ Bm. 8

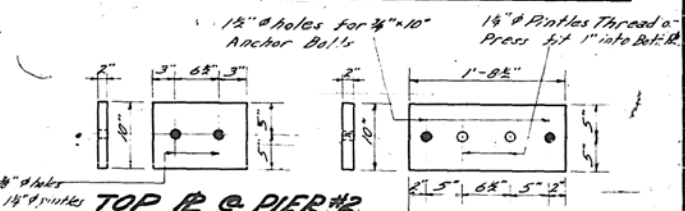


Beam No.	Y	Beam No.	Y
15	8 1/2"	15	5 1/2"
15 1/4	9 1/4"	25 1/4	6"
25 1/4	9 1/4"	35 1/4	6 1/2"
35 1/4	10 1/4"	45 1/4	7"
45 1/4	10 1/4"	55 1/4	7 1/2"
55 1/4	11 1/4"	65 1/4	8"
65 1/4	11 1/4"	75 1/4	8 1/2"
75 1/4	12 1/4"	8	8 3/4"
		9	8 3/4"



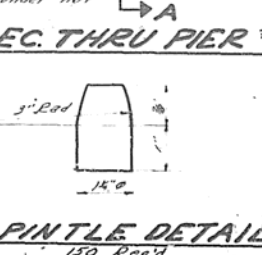
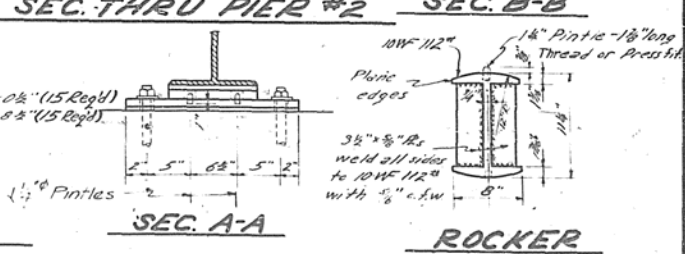
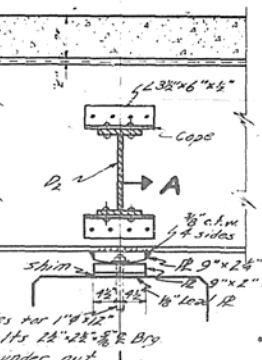
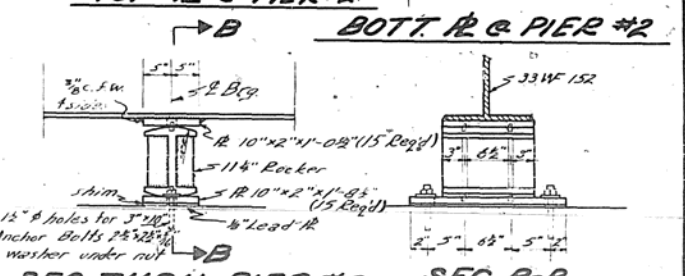
SHIM PLATE THICKNESS

Beam No.	1	2	3	4	5	6	7	8	9	10	11	12	13	14	15
W.F. No.	-	-	8"	-	8"	-	-	-	8"	-	8"	-	8"	-	-
Pier 1/2	8"	-	8"	-	8"	-	7 1/2"	7 1/2"	8"	-	8"	-	8"	-	-

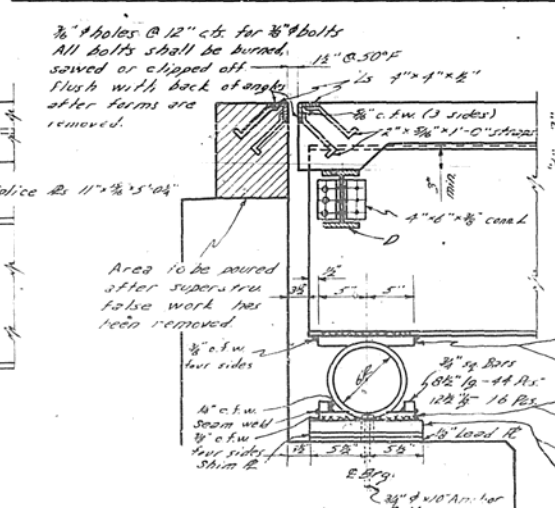
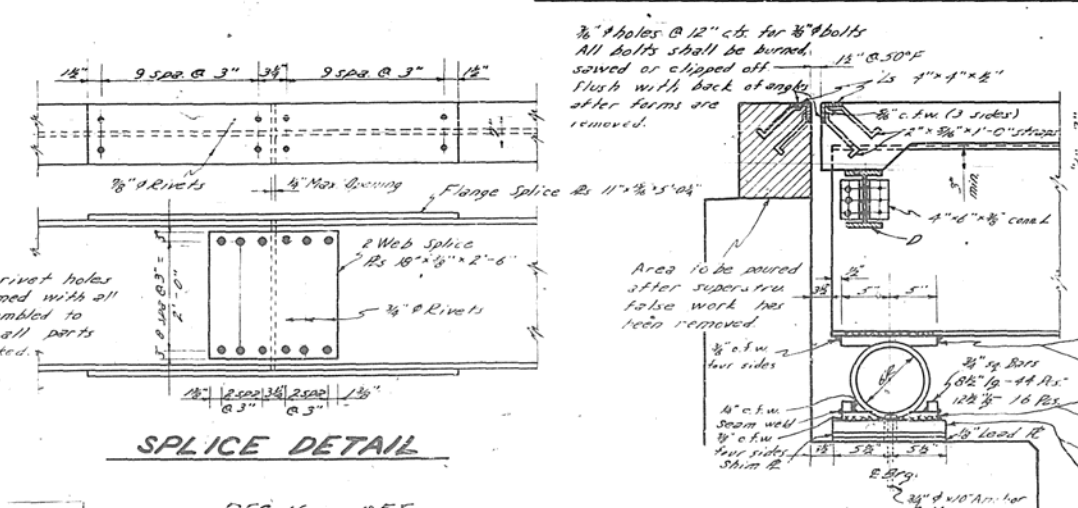


DIAPHRAGMS

D	10W29
D1	12W36
D2	16W36
D3	16W36



PLAN OF STRUCTURAL STEEL



SEC. THRU ABUTMENT

Beam No.	LT	g	LB
2 to 8, 9 to 14	8 1/2"	9 1/4"	1'-10 1/2"
1, 7, 8, 15	12 1/2"	13 3/4"	1'-10 1/2"

DESIGNED: H.M. C. STULTS

CHECKED: V.R. SANTI

DRAWN: H.M. C. STULTS

CHECKED: V.R. SANTI

EXAMINED: M. Romine

PASSED: C. H. ...

APPROVED: R.H. ...

DEC. 16 1955

STRUCTURAL STEEL

GRADE SEPARATION OVER

S.A. RT. 21 (MARKET STREET)

F.A. RT. 39 SEC. 14-HB-F-2

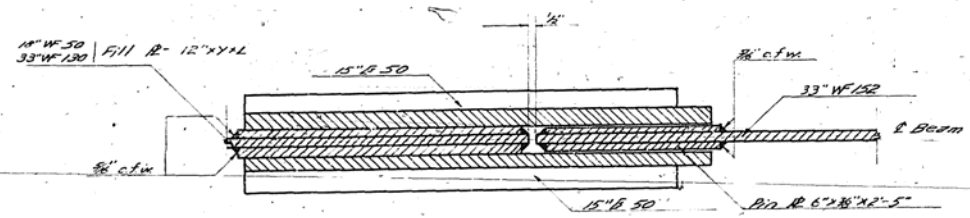
CHAMPAIGN COUNTY

STATION 200+06.10

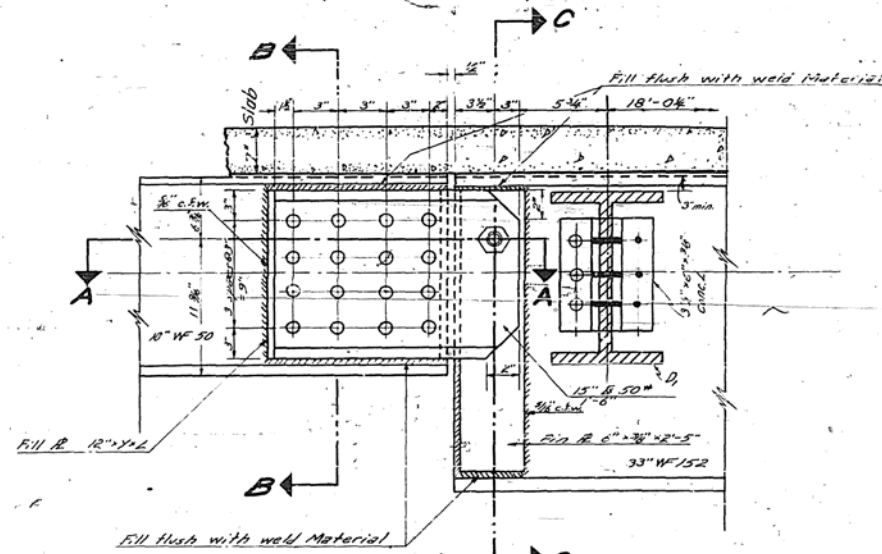
STATE OF ILLINOIS
DEPARTMENT OF PUBLIC WORKS & BUILDINGS
DIVISION OF HIGHWAYS

ROUTE NO.	SECTION	COUNTY	TOTAL SHEETS	SHEET NO.
39	14-HB-2	CHAMPAIGN	14	8
FED. ROAD DIST. NO. 1	BLINDS	FED. RD. PROJECT		6

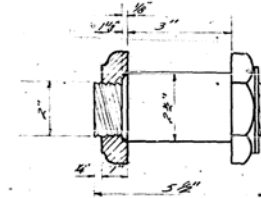
SHEET NO. 8
9 SHEETS



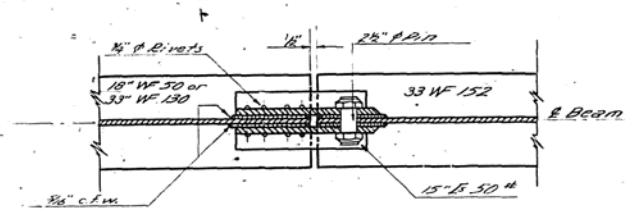
WEB CONNECTION DETAIL



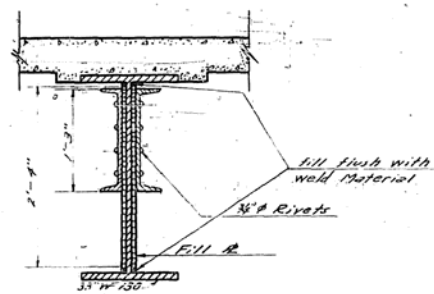
PIN CONNECTION



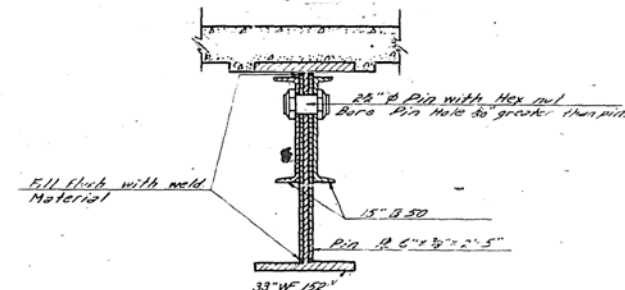
PIN DETAIL
30 Req'd



SECTION A-A



SECTION B-B



SECTION C-C

Provide two short Pilot Nuts.
Cost shall be incidental to fabrication.

BEAMS	R. THICKNESS "Y"	LENGTH "L"	REQ'D
18" WF 50	3/8"	1'-2"	47 pcs
33" WF 130	1/2"	2'-4"	16 pcs

DIMENSION OF FILL Rs.

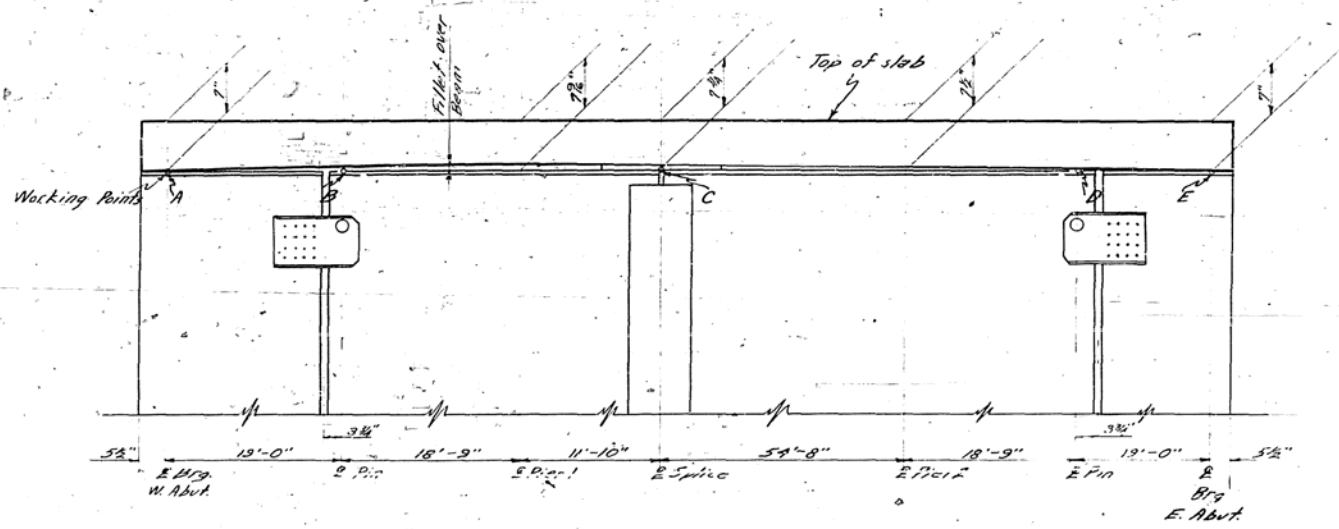
DESIGNED	W. J. Selvi
CHECKED	[Signature]
DRAWN	[Signature]
CHECKED	[Signature]

DATE	DEC. 16 1955
EXAMINED	[Signature]
PASSED	[Signature]
APPROVED	[Signature]

PIN CONNECTION
GRADE SEPARATION OVER
S.A. RT. 21 (MARKET STREET)
F.A. RT. 39 SEC. 14-HB-F-2
CHAMPAIGN COUNTY
STATION 200+06.10

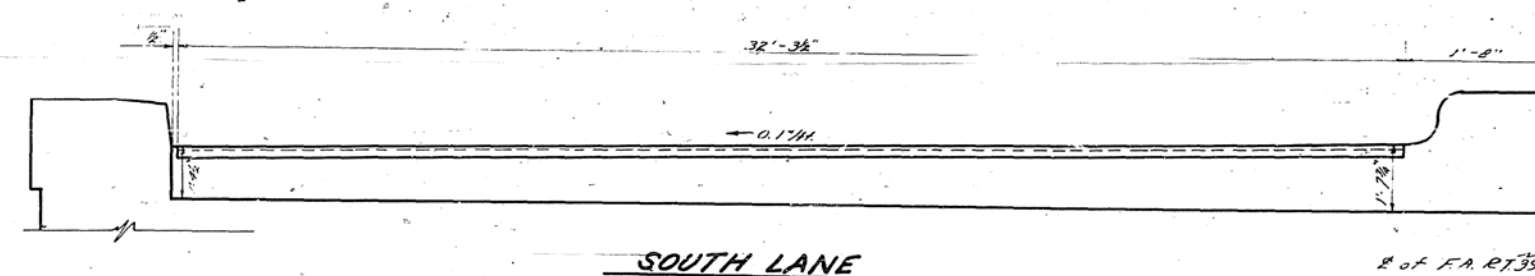
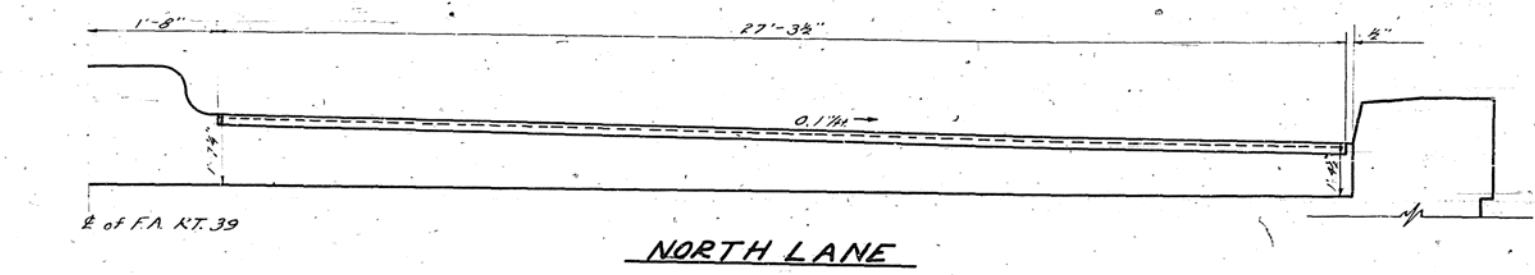
STATE OF ILLINOIS
DEPARTMENT OF PUBLIC WORKS & BUILDINGS
DIVISION OF HIGHWAYS

ROUTE NO.	SECTION	COUNTY	TOTAL SHEETS	SHEET NO.	SHEET NO. 5 9 SHEETS
S.A. 39	4HB-2	CHAMPAIGN	14	9	
FED. ROAD DIST. NO. 1	ILLINOIS	FED. AID PROJECT	8	7	

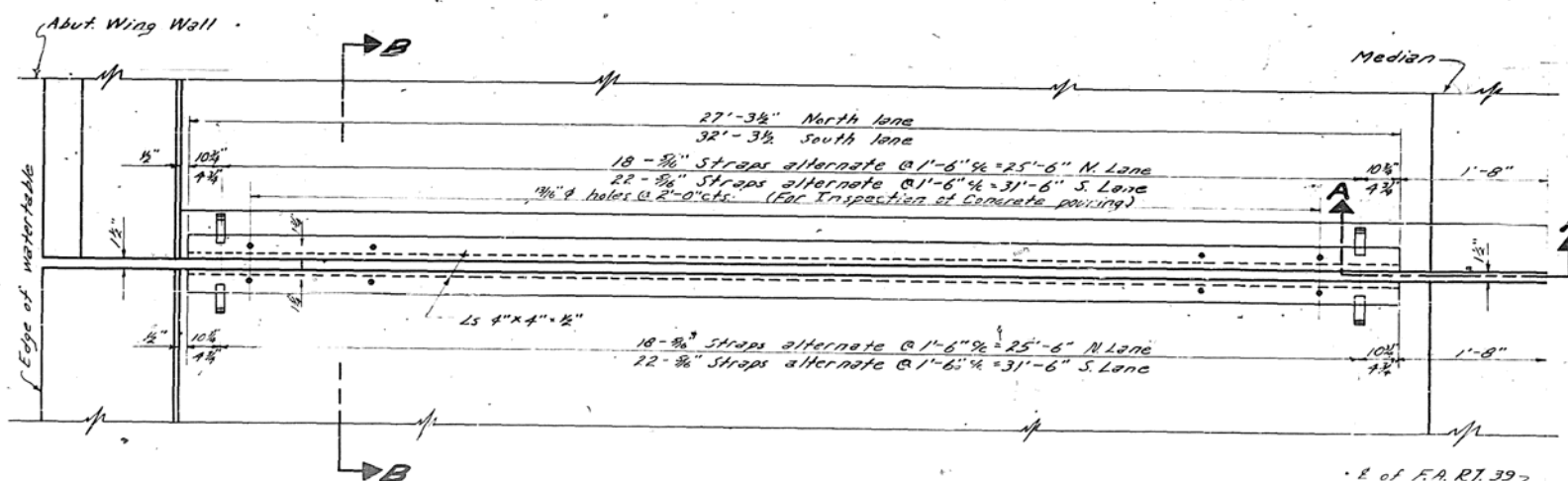


WORKING POINT ELEVATION

Dist.	A	B	C	D	E
1' 14"	754.5786	754.5891	754.6061	754.5842	754.5786
2' 13"	754.6196	754.6301	754.6471	754.6252	754.6196
3' 12"	754.6605	754.6711	754.6881	754.6661	754.6605
4' 11"	754.7015	754.7121	754.7291	754.7072	754.7015
5' 10"	754.7425	754.7530	754.7700	754.7481	754.7425
6' 9"	754.7834	754.7939	754.8109	754.7890	754.7834
7' 8"	754.8167	754.8272	754.8442	754.8223	754.8167
15'	754.5377	754.5482	754.5652	754.5433	754.5377

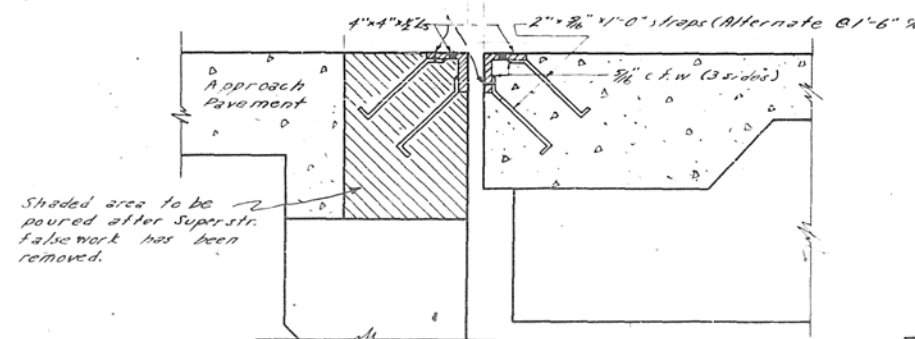


ELEVATION OF EXPANSION GUARD



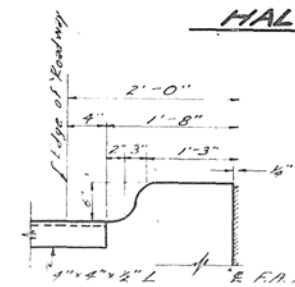
HALF PLAN

1/2" holes @ 2'-0" cts. for #8 bolts
All bolts shall be turned sawed
or clipped off flush with
back of angles after forms are removed.
1/2" @ 50%



SECTION B-B

STRAP DETAIL



HALF MEDIAN SEC. A-A

NOTES

- The Roadway Expansion Guard shall be lubricated to fit Roadway.
- All surfaces inaccessible after erection shall receive 2 shop coats of red lead paint except Straps and Anchor Bolts which shall not be painted. Estimated Total Wt. 3390 lbs. and is included with structural steel.

**EXPANSION GUARD & TOP BEAM ELEV.
GRADE SEPARATION OVER
S.A. RT. 21 (MARKET STREET)
F.A. RT. 39 SEC. 14-NB-F-2
CHAMPAIGN COUNTY
STATION 200+06.10**

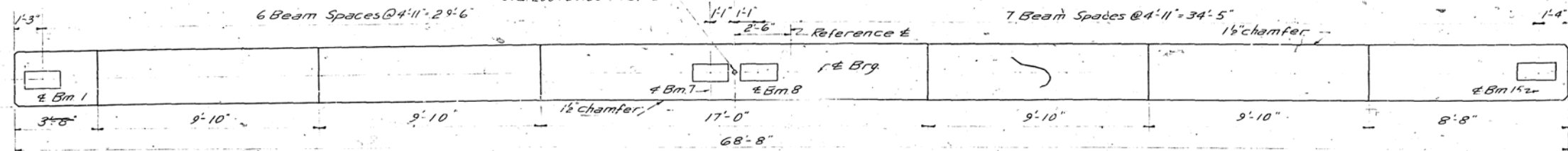
DESIGNED	H. W. Chan	EXAMINED	DEC. 16 19.55
CHECKED	V. R. Bente	ENGINEER OF BRIDGE AND TRAFFIC STRUCTURES	
DRAWN	S. J. Hughes	PASSED	
CHECKED		APPROVED	

STATE OF ILLINOIS
DEPARTMENT OF PUBLIC WORKS & BUILDINGS
DIVISION OF HIGHWAYS

ROUTE NO.	SECTION	COUNTY	TOTAL SHEETS	SHEET NO.
S. R. 1 P. A. 39		CHAMPAIGN	11	11
FED. ROAD DIST. NO.	ALIGNED	FED. AID PROJECT		

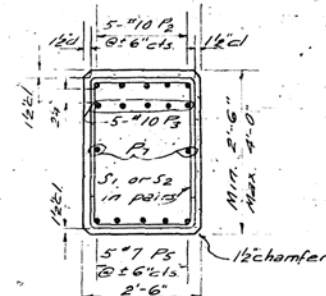
SHEET NO. 11
SHEETS

Sta 199+72.85 Pier 1
Sta 200+39.35 Pier 2



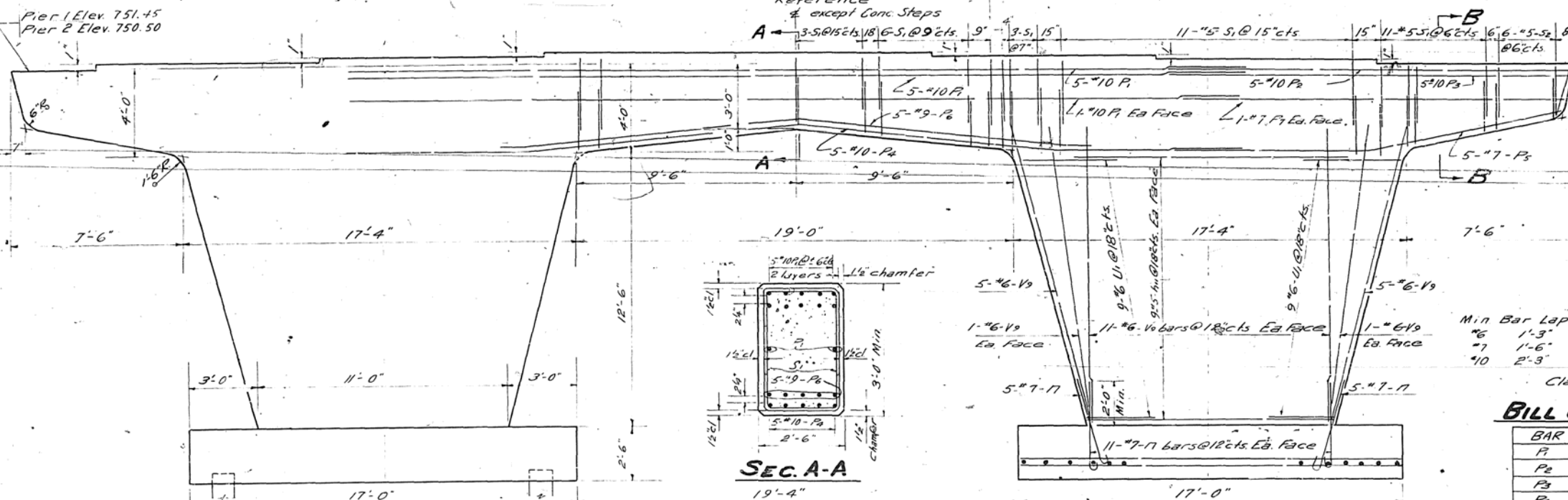
TOP PLAN

BAR-U



SEC. B-B

Pier 1 Sta. 199+72.85 Cr. Elev. 755.48
Pier 2 Sta. 200+39.35 Cr. Elev. 755.48



ELEVATION
Looking East

BAR-N

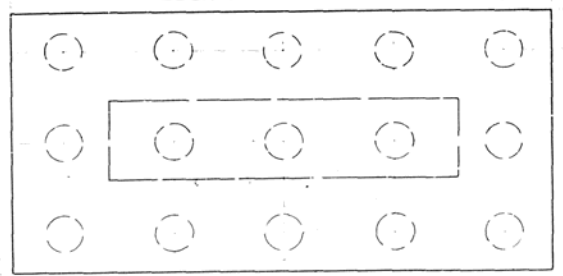
Min Bar Lap
#6 1'-3"
#7 1'-6"
#10 2'-3"

Class A Concrete shall be used in Piers

BILL OF MATERIAL - 2 PIERS

BAR	NO	SIZE	LENGTH	SHAPE
P1	24	#10	40'-0"	—
P2	20	#10	20'-3"	—
P3	20	#10	18'-0"	—
P4	10	#10	42'-0"	—
P5	20	#7	17'-0"	—
P6	10	#9	24'-0"	—
P7	8	#7	17'-9"	—
S1	292	#5	7'-7"	□
S2	48	#5	6'-9"	□
H1	72	#5	10'-0"	—
V1	144	#6	14'-6"	—
U	72	#6	12'-3"	—
N	128	#7	5'-0"	—
T	102	#6	8'-0"	—
W	48	#7	16'-6"	—
Class A Concrete			Cu Yds	167.3
Reinforcement Bars			Lbs	266.90
Cresotated Piles			Lin. Ft	1200
Test Piles (Timber)			Ea	2
Class A Exc For Structures Curb				200

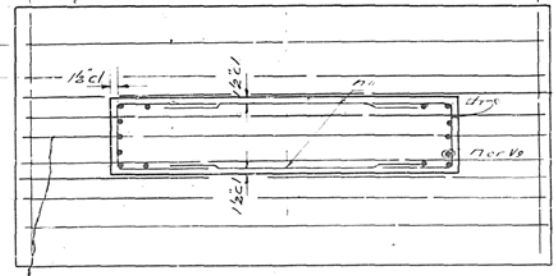
1'-7" 5-22-Ton Cre. Piles @ 3'-5 cts 13'-10" 1'-7" Each Row



FOOTING PLAN

Showing Dimensions & Pile Spacing
See Plan at right for Reinforcement

27 #6 bars @ 7 cts. Pier 1
24 #6 bars @ 8 1/2 cts. Pier 2



FOOTING PLAN

Showing Reinforcement Bars see
Plan at left for Pile Spacing

END VIEW

PILE DATA

60 24-Ton Cresotated Piles (2 Piers)
Estimated Length - 20 Feet
2 Timber Test Piles

BAR-S1, S2

Use in pairs as shown

BAR-P2

BAR-P4, P6

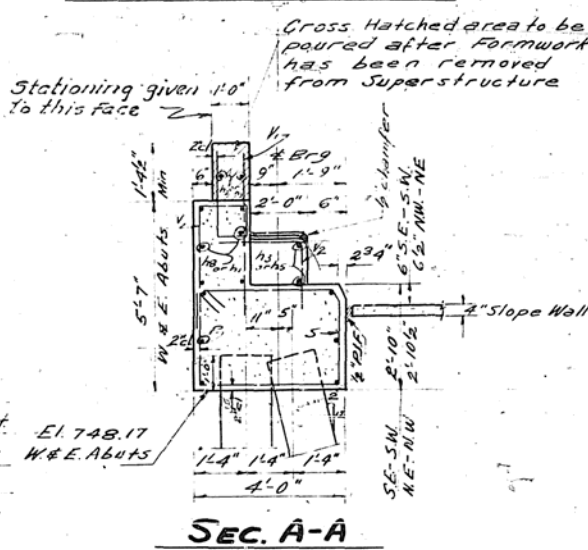
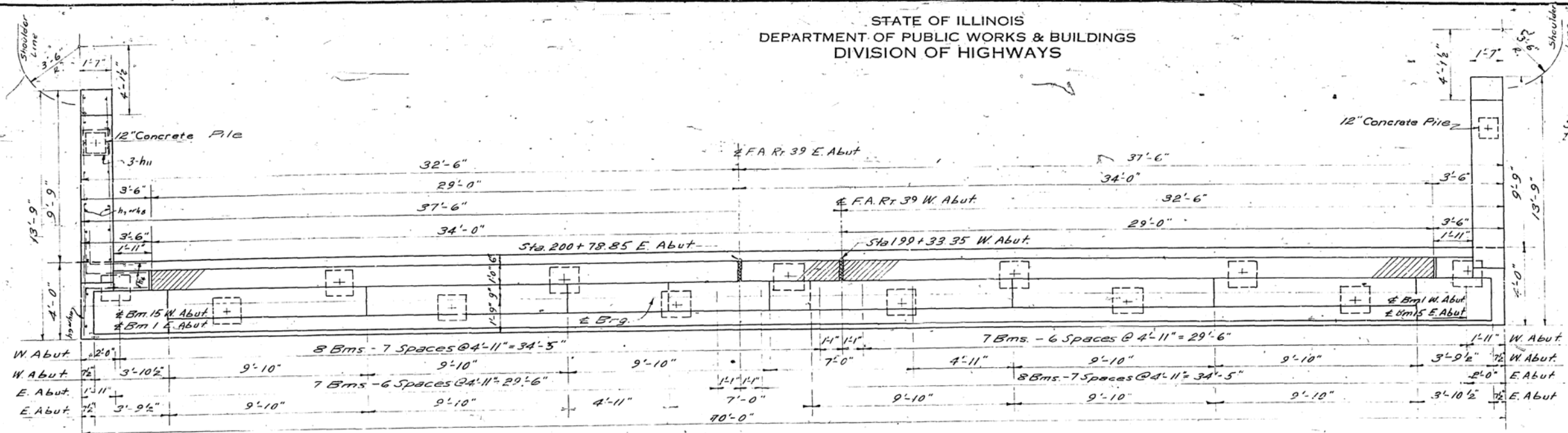
BAR-P5

DESIGNED BY	EXAMINED
CHECKED BY	PASSED
IN CHARGE	APPROVED
CHECKED	

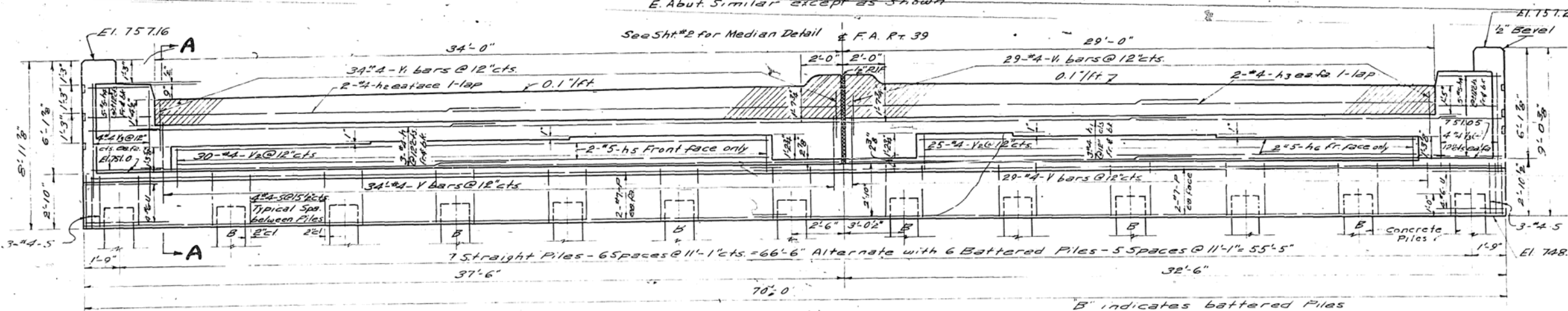
PIER 1 & 2
GRADE SEPARATION OVER
S.A. RT. 21 (MARKET STREET)
F.A. RT. 39 SEC. 14-HB-2
CHAMPAIGN COUNTY
STATION 200+06.10

STATE OF ILLINOIS
DEPARTMENT OF PUBLIC WORKS & BUILDINGS
DIVISION OF HIGHWAYS

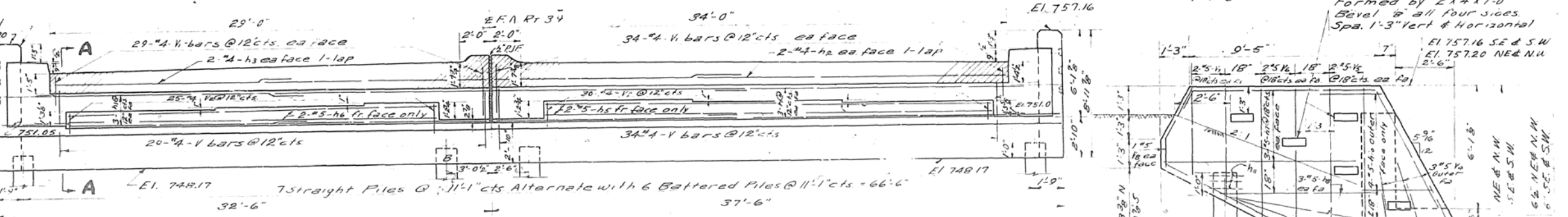
ROUTE NO.	SECTION	COUNTY	TOTAL SHEETS	SHEET NO.
F.A. 31	14	CHAMPAIGN	4	7
FED. ROAD DIST. NO. 7		ILLINOIS' FED. AID PROJECT		SHEET NO. 7
				9 SHEETS



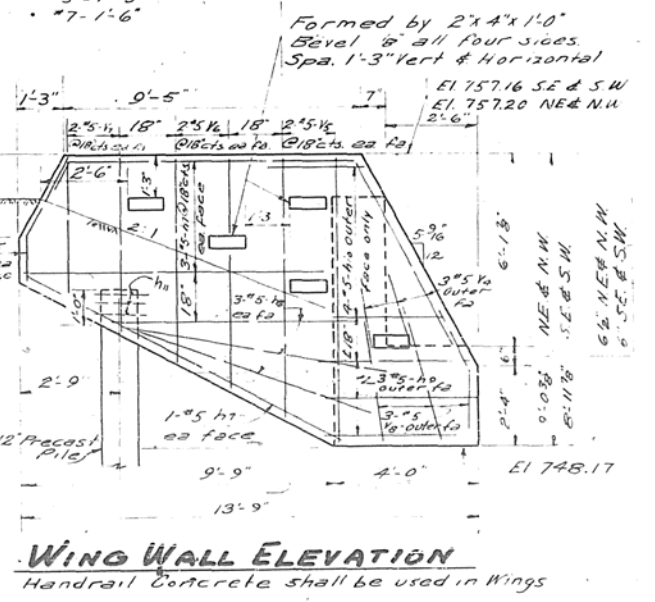
PLAN - W. ABUT.
E. Abut. Similar except as shown



ELEVATION - W. ABUT.
E. Abut. Similar except as shown



ELEVATION - E. ABUT.
Reinf. Similar to W. Abut. except as shown



WING WALL ELEVATION
Handrail Concrete shall be used in Wings

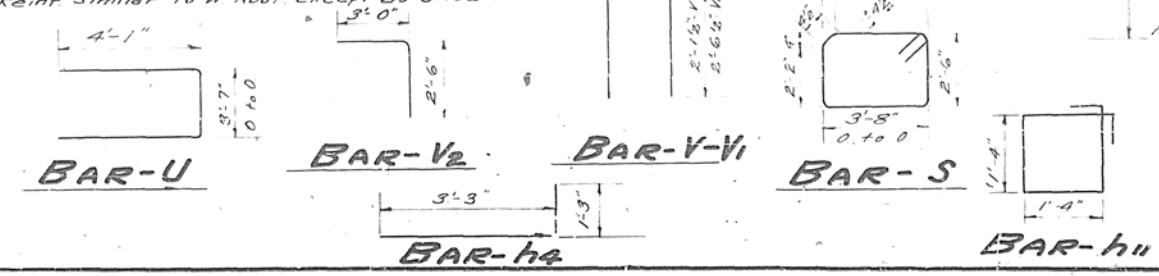
BILL OF MATERIAL - 2 ABUTS.

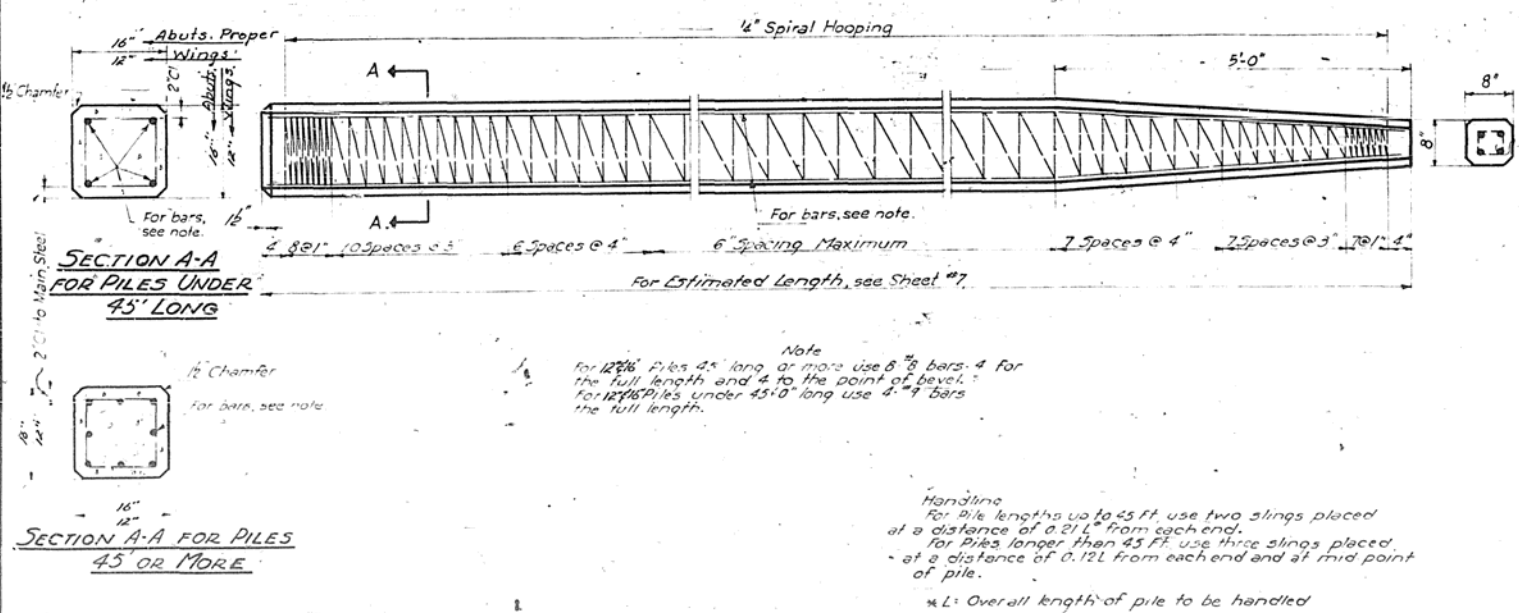
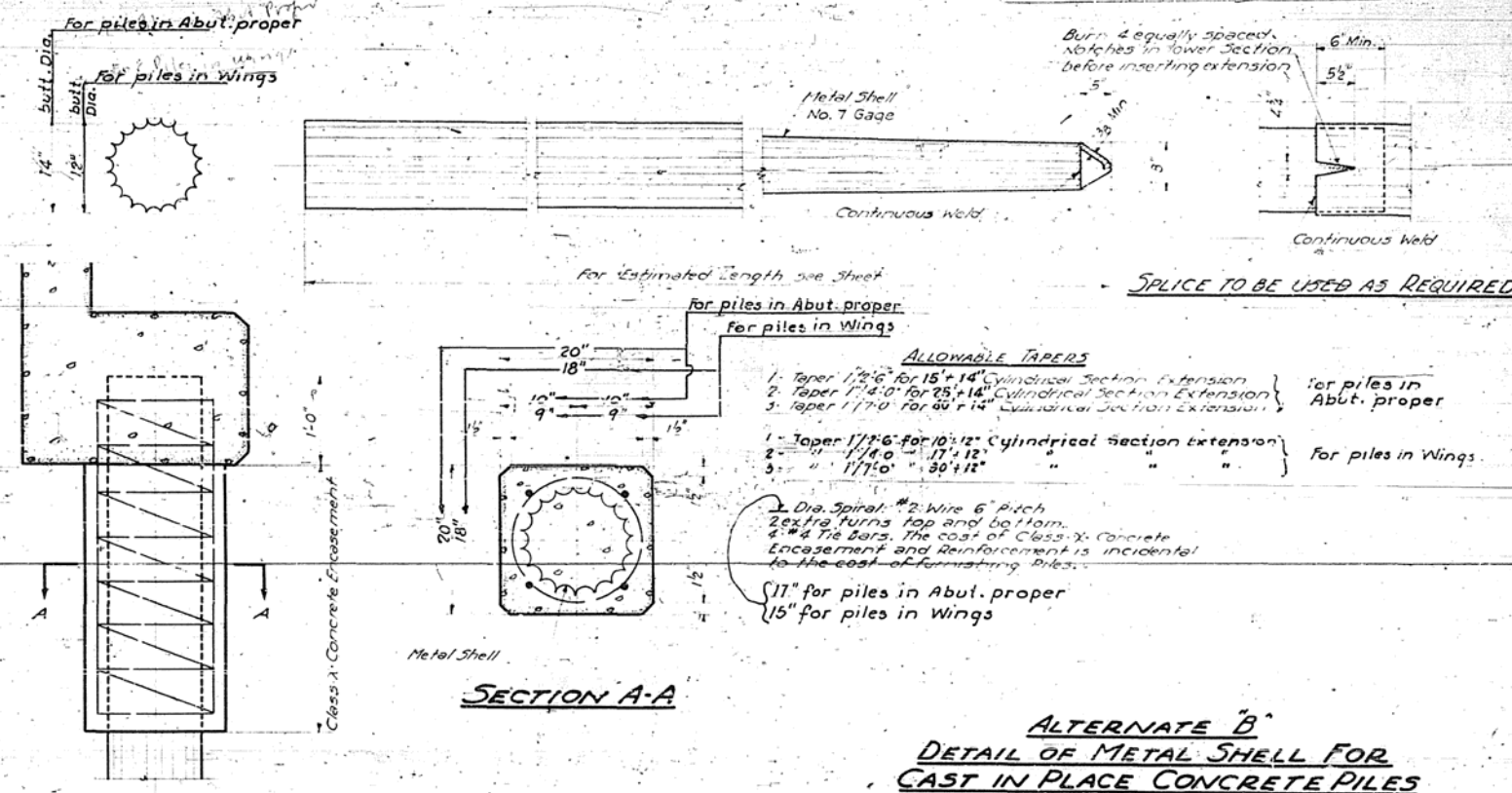
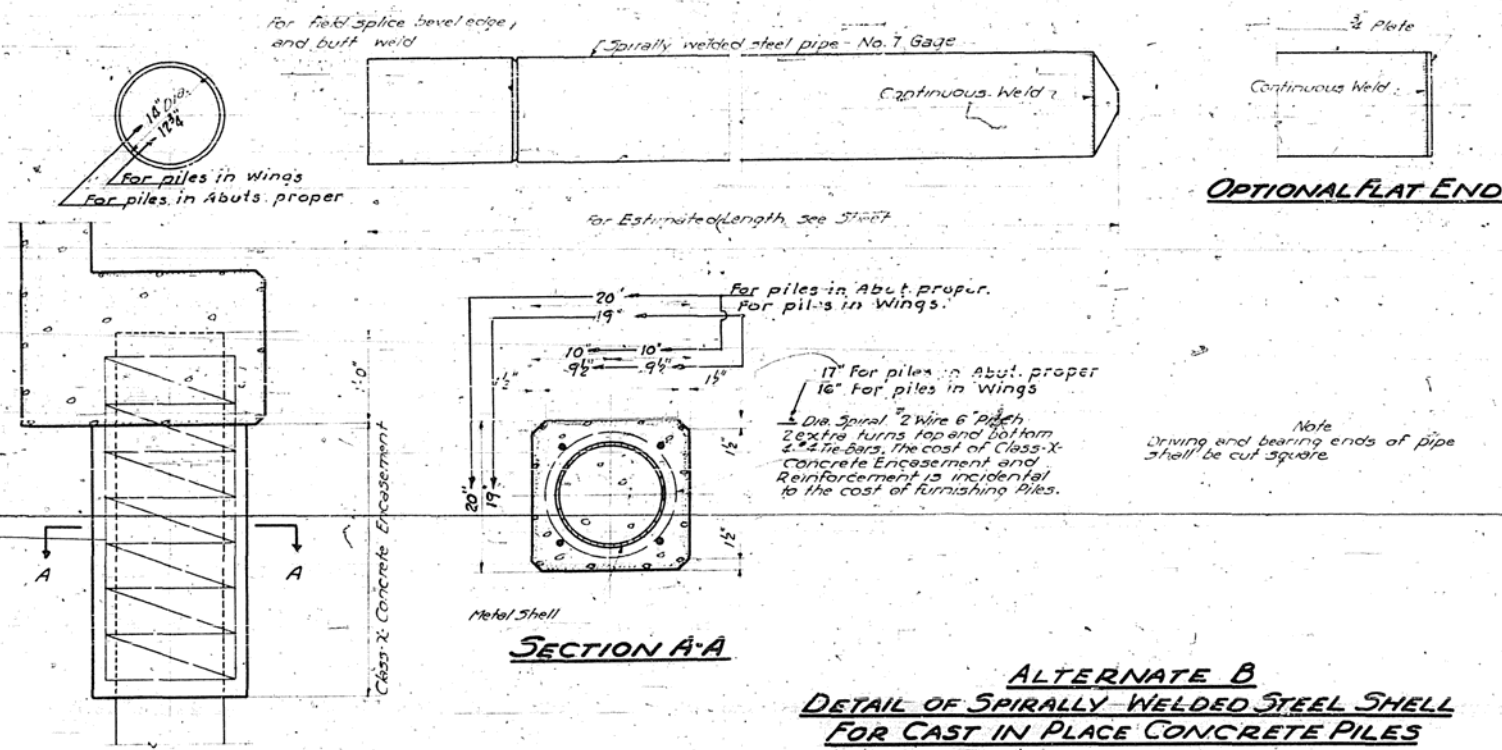
BAR NO.	SIZE	LENGTH	SHAPE
h	24	48'-0"	—
h1	24	15'-6"	—
h2	8	17'-6"	—
h3	8	15'-0"	—
h4	40	4'-6"	—
h5	4	29'-3"	—
h6	4	24'-3"	—
h7	32	10'-6"	—
h8	24	8'-6"	—
h9	12	5'-0"	—
h10	16	3'-0"	—
v	126	9'-6"	—
v1	126	5'-9"	—
v2	110	5'-6"	—
v3	32	6'-3"	—
v4	12	6'-6"	—
v5	16	8'-10"	—
v6	16	7'-0"	—
v7	16	5'-0"	—
v8	20	4'-0"	—
h11	12	6'-0"	—
f	24	36'-0"	—
s	108	18'-0"	—
u	16	11'-3"	—
Class X Concrete			Cu Yds. 102.0
Handrail Concrete			Cu Yds. 17.4
Reinforcement Bars			Lbs. 7170
Concrete Piles (Abuts)			Lin Ft. 960
Test Piles (Concrete)			EA 2
Concrete Piles (Wings)			Lin Ft. 110
Name Plates			EA 2

PILE DATA
(2 Abuts) See Sht #9 for detail
26-36 Ton Concrete Piles
Est Length - 40 Feet
4-12 Ton Concrete Piles - Wings
Est Length - 35 Feet

ABUTMENTS
GRADE SEPARATION
OVER S.A. RT. 21 (MARKET ST.)
F.A. RT. 39 SEC. 14-HB-2
CHAMPAIGN COUNTY
STA 200+06.10

DESIGNED	W. J. Sandoval	DATE	19...
CHECKED	V.P. Smith	EXAMINED	W. J. Sandoval
DRAWN	W. J. Sandoval	PASSED	E. J. ...
CHECKED	W. J. Sandoval	APPROVED	R.R. ...





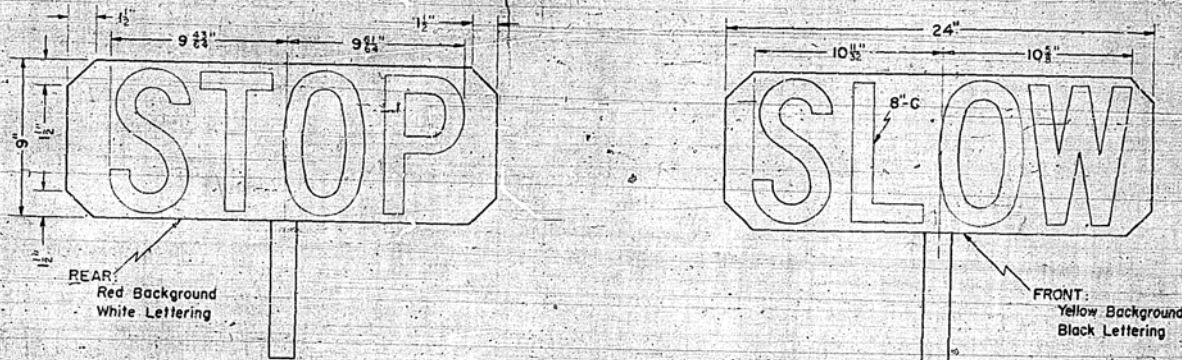
ALTERNATE A
DETAIL OF PRECAST CONCRETE PILES

P. C. PILE DETAIL
GRADE SEPARATION OVER
S.A. RT. 21 (MARKET STREET)
F.A. RT. 39 SEC. 14-HB-2
CHAMPAIGN COUNTY
STATION 200+06.10

DESIGNED	H. M. Uhl	EXAMINED	J. M. Collins
CHECKED	J. C. Condit	PASSED	J. C. Condit
DRAWN	H. C. Miller	APPROVED	R. R. Bratton
CHECKED	J. C. Condit		

DEC. 16 1955

STANDARD DESIGN FOR
FLAGMAN TRAFFIC CONTROL SIGN



-NOTE-
The paddle type sign used by the flagmen to direct traffic shall be constructed with "STOP" on one side and "SLOW" on the reverse side.
Signs may be constructed with a short handle or a long staff which rests on the ground.

STATE OF ILLINOIS DEPARTMENT OF PUBLIC WORKS AND BLDGS. DIVISION OF HIGHWAYS		REVISIONS	
PASSED	DATE	BY	DATE
PASSED	April 10 1954		
APPROVED	April 12 1954		

The material for the sign shall be 1/4" Exterior Grade A-A Plywood or Exterior D.F.P.A.-2 sides sound.

These signs shall be furnished by the Contractor and shall be used by the flagmen in lieu of red flags or other signaling devices.

The cost of furnishing and maintaining the signs will be considered incidental to the contract and no additional compensation will be allowed.

STANDARD 2114

STANDARD DESIGN FOR
ROAD UNDER CONSTRUCTION SIGN

GENERAL NOTES

The border and letters shall be printed black on a white background.
The letters shall have a stroke 3/8" wide and a width in proportion to the dimensions shown.
The Contractor shall furnish all materials and labor for constructing and erecting this sign at each end of the construction section, as directed by the Engineer. The signs shall be placed prior to the actual starting of construction operations.
Furnishing and erecting these signs will be considered incidental to the contract and no additional compensation will be allowed.



Sign may be made of wood, rigidly cleated or of metal.

STATE OF ILLINOIS DEPARTMENT OF PUBLIC WORKS AND BUILDINGS DIVISION OF HIGHWAYS		REVISIONS	
PASSED	DATE	BY	DATE
PASSED	Nov 28 1951		
APPROVED	Nov 29 1951		

STANDARD 1971S