

STATE OF ILLINOIS
DEPARTMENT OF PUBLIC WORKS AND BUILDINGS
DIVISION OF HIGHWAYS
PLANS FOR PROPOSED
FEDERAL AID HIGHWAY

FEDERAL AID ROUTE NO.	SEC.	COUNTY	TOTAL SHEETS	SHEET NO.
FA 157	10-34 HB-3	CHAMPAIGN	22	1

P. 95-011-00

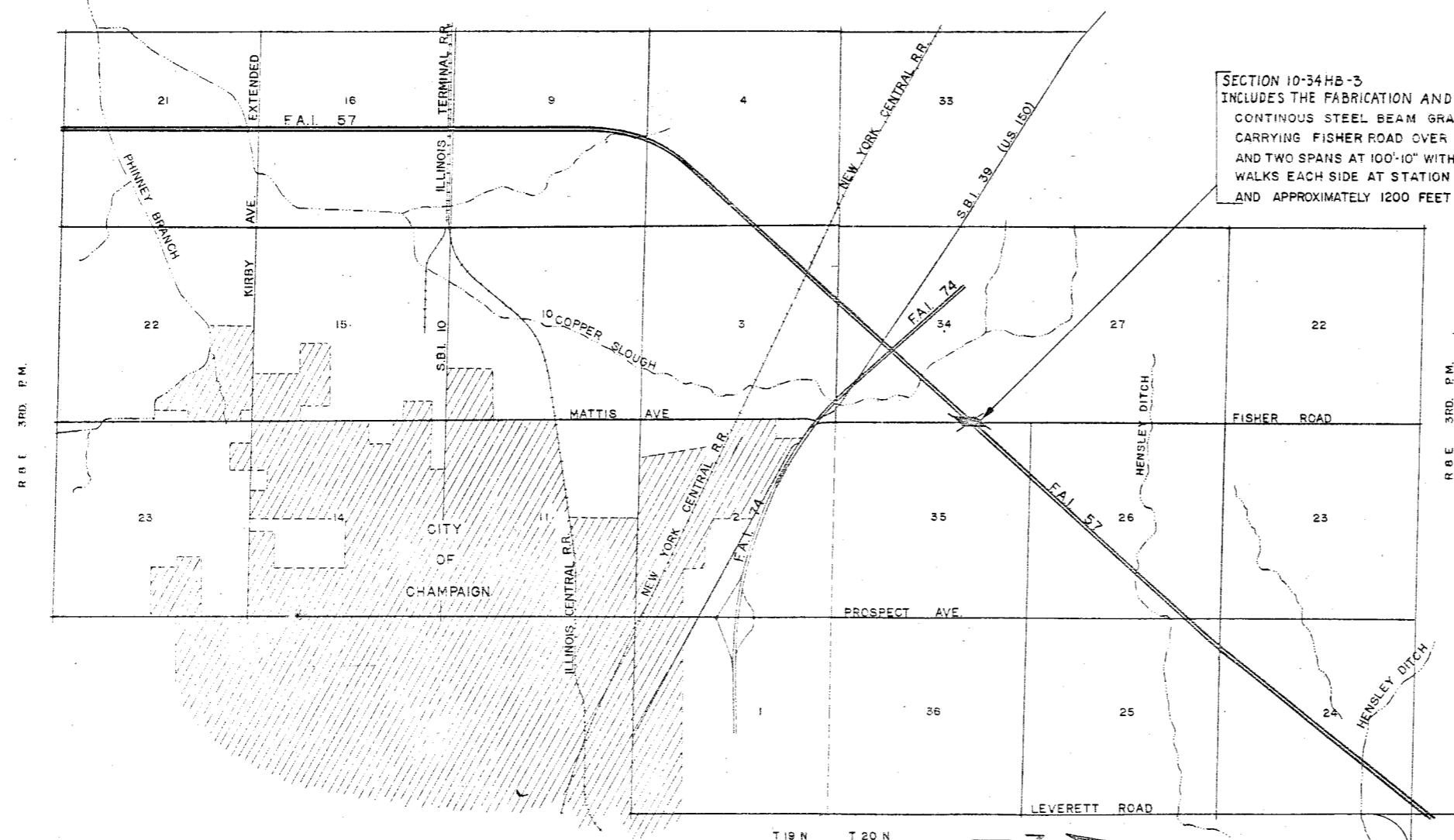
INDEX OF SHEETS FOR SECTION 10-34HB-3 ON SHEET 3

F.A.I. ROUTE 57 SEC. 10-34HB-3 CHAMPAIGN COUNTY
PROJECT I-57-5 (25) 236

SCALES
 PLAN 1 INCH = 50 FT.
 PROFILE, HOR. 1 INCH = 100 FT.
 PROFILE, VERT. 1 INCH = 10 FT.
 CROSS-SECTIONS 1 INCH = 5 FT.



SECTION 10-34HB-3
 INCLUDES THE FABRICATION AND CONSTRUCTION OF ONE 4-SPAN CONTINUOUS STEEL BEAM GRADE SEPARATION STRUCTURE CARRYING FISHER ROAD OVER F.A.I. ROUTE 57. TWO SPANS AT 62'-4" AND TWO SPANS AT 100'-10" WITH 28' ROADWAY WIDTH AND 2' SAFETY WALKS EACH SIDE AT STATION 626+66.67 ON C. F.A.I. RTE. 57. AND APPROXIMATELY 1200 FEET OF DETOUR ROAD.



APPROVED
W.C. Baumann 4/18/63

STATE OF ILLINOIS DEPARTMENT OF PUBLIC WORKS AND BUILDINGS DIVISION OF HIGHWAYS	
SUBMITTED	March 17, 1963
EXAMINED	September 23, 1963
PASSED	September 23, 1963
APPROVED	September 23, 1963
APPROVED	September 23, 1963

CLARK, DAILY, DIETZ AND ASSOCIATES
 211 N. RACE ST., URBANA, ILL.
Eugene L. Clark

DEPARTMENT OF COMMERCE BUREAU OF PUBLIC ROADS	
APPROVED	
DIVISION ENGINEER	DATE

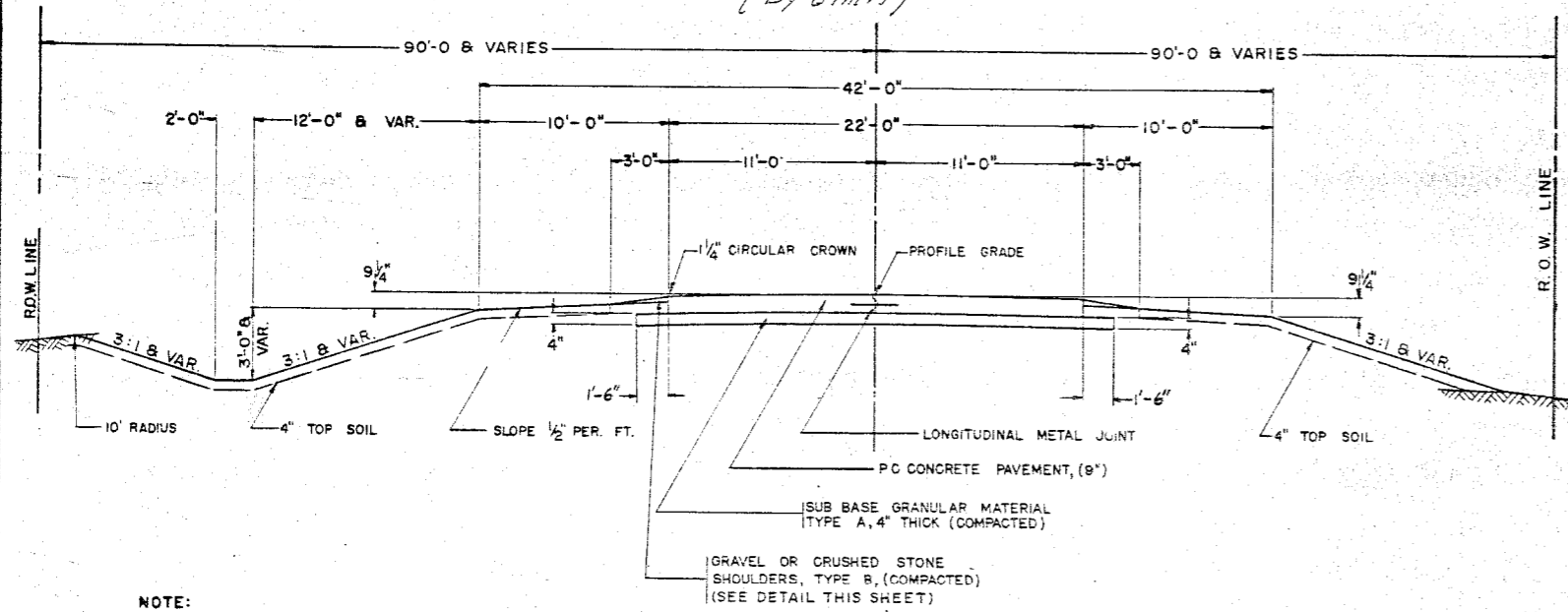
NET LENGTH OF PROJECT I-57-5(25) = 0.00 FT. = 0.000 MILES

JOB NO. 23200

Revised 3/12/64

TYPICAL CROSS SECTION OF PROPOSED
 22' PORTLAND CEMENT CONCRETE PAVEMENT
 (9") (RURAL)

FISHER ROAD (COUNTY HIGHWAY #1)
 STA. 10+00.00 TO STA. 23+24.51
 STA. 26+56.85 TO STA. 40+00.00
 (By Others)

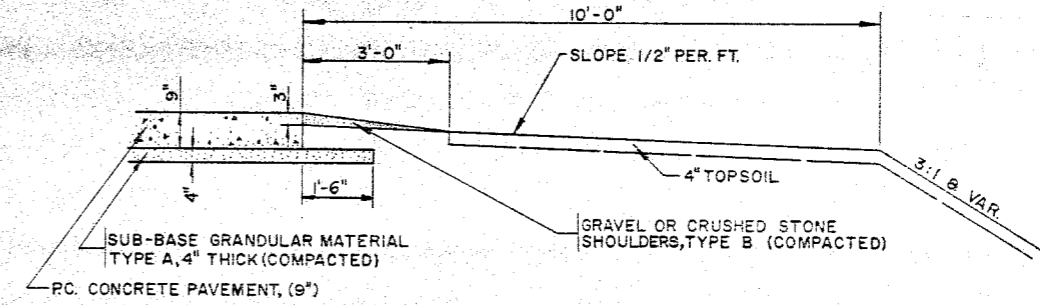


NOTE:
 DETAILS OF PAVEMENT, JOINTS, PAVEMENT FABRIC, ETC.,
 TO CONFORM TO STANDARDS; SHOULDERS AND
 SIDESLOPES SHALL BE ROUNDED 12" IN EACH DIRECTION
 FROM THE TANGENT INTERSECTION OF THESE SURFACES.

DESIGN CLASSIFICATION
 CLASS C ROAD
 A.D.T. = 2350 (1975)

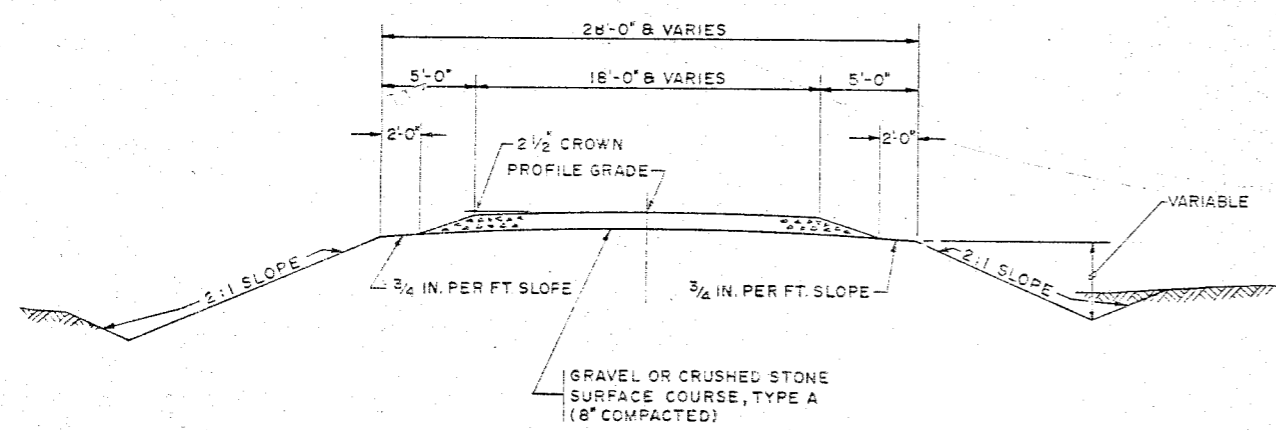
THE NOMINAL THICKNESSES FOR SUB-BASE GRANULAR MATERIAL
 AND SHOULDERS, BASE AND SURFACE COURSES ARE
 SHOWN ON THE TYPICAL SECTIONS, STANDARDS, SCHEDULES OR
 SPECIAL DETAILS. THE CONSTRUCTED THICKNESS OF THE ABOVE
 ITEMS SHALL NOT BE LESS THAN 90 PERCENT OF THE NOMINAL
 THICKNESS AT ANY LOCATION.

DETAIL OF GRAVEL OR CRUSHED
 STONE SHOULDERS, TYPE B
 (By Others)

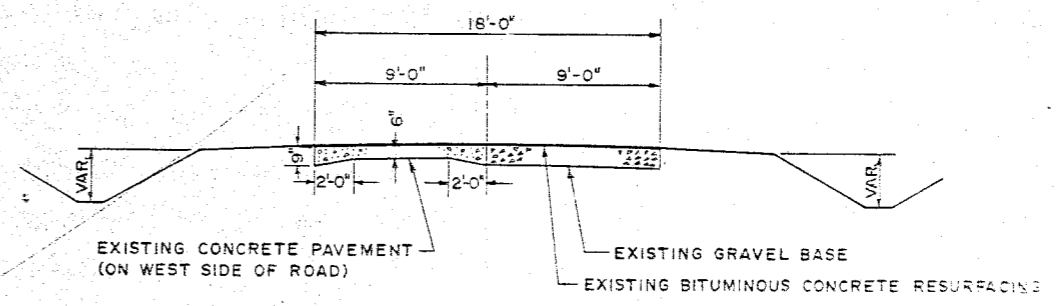


NOTE:
 THE SUB-BASE GRANULAR MATERIAL HAS
 BEEN REVISED FROM 12" TO 15"
 OUTSIDE OF PAVEMENT. THE CROSS
 SECTIONS HAVE NOT BEEN REVISED TO
 INCLUDE THIS CHANGE.

TYPICAL CROSS SECTION OF DETOUR ROAD



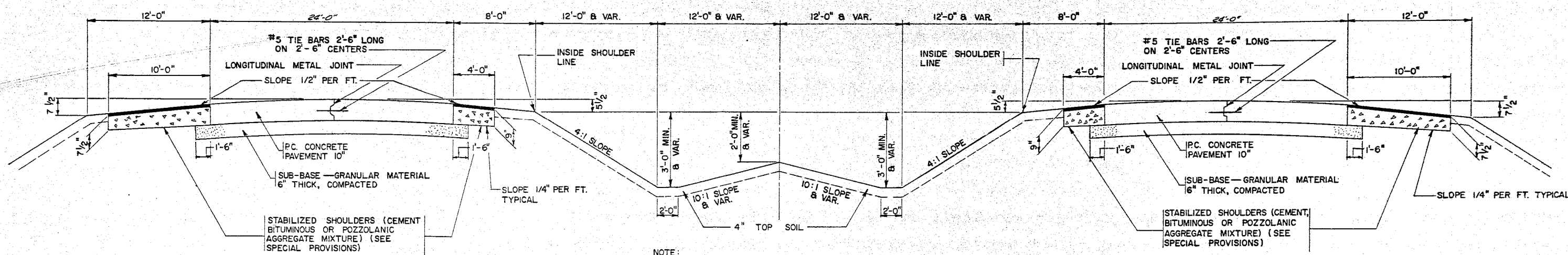
TYPICAL CROSS SECTION SHOWING
 EXISTING FISHER ROAD (COUNTY HIGHWAY #1) PAVEMENT



CHECKED BY DATE IN CHANGE
 DRAWN BY DATE

Revised Sub-Base Granular Material Type A noted Note:
 EPT 10-22-68

TYPICAL CROSS SECTION F.A.I.-57 MEDIAN AND SHOULDERS



NOTE:
 SHOULDERS AND SIDESLOPES SHALL BE ROUNDED 12" IN EACH DIRECTION FROM THE TANGENT INTERSECTION OF THESE SURFACES.

THE NOMINAL THICKNESSES FOR SUB-BASE GRANULAR MATERIAL AND BASE AND SURFACE COURSES ARE SHOWN ON THE TYPICAL SECTIONS, STANDARDS SCHEDULES OR SPECIAL DETAILS. THE CONSTRUCTED THICKNESS OF THE ABOVE ITEMS SHALL NOT BE LESS THAN 90 PER-CENT OF THE NOMINAL THICKNESS AT ANY LOCATION

PROJECT 1-57-525)236
 LOCATION OF WORK: BRIDGE
 STA. 23+24.51
 TO
 STA. 26+56.85

CONSTRUCTION TYPE CODE	QUANTITY	UNIT	ITEM	CODE NUMBER
X771	2,078	CU. YDS.	EARTH EXCAVATION	011001
	21,653	CU. YDS.	BORROW EXCAVATION	013001
	1,100	TON	GRAVEL OR CRUSHED STONE SURFACE COURSE, TYPE A	036001
	365	CU. YDS.	CLASS A EXCAVATION FOR STRUCTURES	050001
	6474	CU. YDS.	CLASS X CONCRETE	052003
	1,310	SQ. YDS.	PROTECTIVE COAT	052021
	379,898	LBS.	FURNISHING AND ERECTING STRUCTURAL STEEL	054001
	659	LIN. FT.	FURNISHING AND ERECTING METAL HANDRAIL	055001
	72	LIN. FT.	PIPE CULVERTS, TYPE 1, 24"	058202
	89,123	LBS.	REINFORCEMENT BARS	059001
	980	LIN. FT.	FURNISHING CREOSOTED PILES UP TO 20 FEET	060004
	1	EACH	TEST PILE (TIMBER)	060007
	980	LIN. FT.	DRIVING TIMBER PILES	060008
	600	LIN. FT.	DRIVING CONCRETE PILES	060043
	600	LIN. FT.	FURNISHING CONCRETE PILES	060044
	2	EACH	TEST PILE (CONCRETE)	060047
	2	EACH	NAME PLATES	061001
	425	SQ. YDS.	PAVEMENT REMOVAL	082001
	580	SQ. YDS.	SLOPE WALL 4 INCH	083002
	180	TON	GRAVEL OR CRUSHED STONE	101002
	6.8	TON	CALCIUM CHLORIDE APPLIED	102001
	1	LUMP SUM	BRIDGE SEAT SEALANT	Z01023
	1	EACH	CONSTRUCTION IDENTIFICATION SIGN	Z01320

SHEET NO.	TITLE
1	COVER SHEET
2	TYPICAL CROSS SECTIONS FOR FISHER ROAD, DETOUR ROAD AND EXISTING FISHER ROAD
3	TYPICAL CROSS SECTION FOR F.A.I. ROUTE 57, INDEX OF SHEETS AND SUMMARY OF QUANTITIES
4	PLAN AND PROFILE, F.A.I. ROUTE 57 STATION 615+00 TO STATION 630+00
5-6	PLAN AND PROFILE, FISHER ROAD AND DETOUR ROAD STATION 10+00 TO STATION 35+00
7-16	BRIDGE PLANS, BRIDGE STATION 626+66.67
17-19	CROSS SECTION, FISHER ROAD AND DETOUR ROAD STATION 17+00 TO STATION 29+00
20	STANDARD 1909-4
21	STANDARDS 2113-1, 2153-4
22	STANDARDS 1971-3, 1972-1 & 2114

Note: 1 sign conforming to Standard 2153-4 should be erected at location as shown on sheet No. 6.

DRAWN BY: DATE: CHECKED BY: DATE: REVISIONS:

Revised Quant. of Reinf. Bars from 88,946 to 89,123 1-23-64 J.M.V.

Rev. 5-10-63 VDS Rev. Quant. For Driv. Cre. Piles: 900 to 980 lin. ft.; Added Bridge Seat Sealant.

Revised Sub-Base Granular Mat. BPT 10-22-63

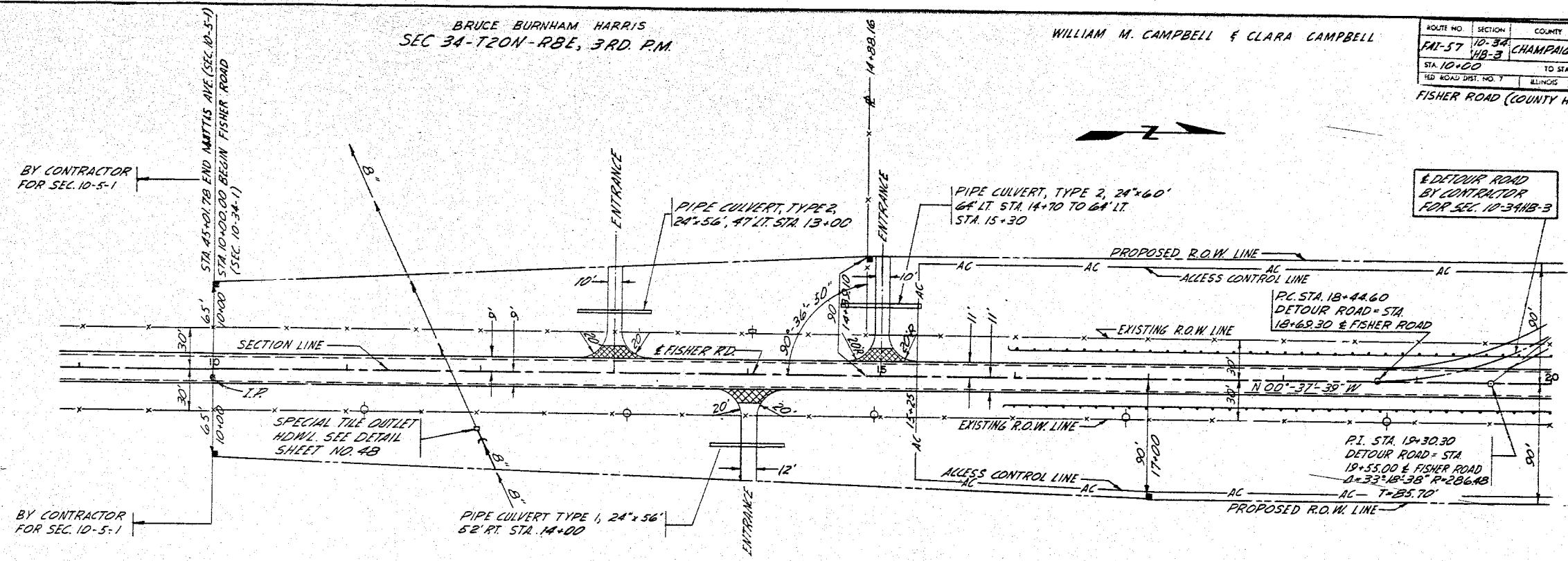
Added Sign Note - M.M.D. - 6/21/63
 Added Item Z01320 in Summary & brought still up-to-date. AS 3/1/64.

DATE	
BY	
PROJECT	
NO. OF SHEETS	
NO. OF THIS SHEET	
NO. OF PAGES	
NO. OF THIS PAGE	
NO. OF SHEETS	
NO. OF THIS SHEET	
NO. OF PAGES	
NO. OF THIS PAGE	
NO. OF SHEETS	
NO. OF THIS SHEET	
NO. OF PAGES	
NO. OF THIS PAGE	

BRUCE BURNHAM HARRIS
SEC 34-T20N-R6E, 3RD P.M.

WILLIAM M. CAMPBELL & CLARA CAMPBELL

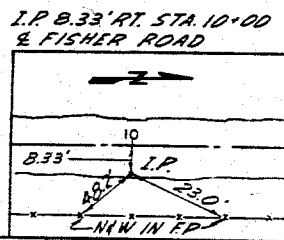
ROUTE NO.	SECTION	COUNTY	SPTS	SHEET
10-57	10-34	CHAMPAIGN	22	5
STA 10+00		TO STA 20+00		
FISHER ROAD (COUNTY HIGHWAY NO. 1)				



NOTE: EARTHWORK INCLUDED IN QUANTITIES LISTED ON SHEET NO. 9

INCIDENTAL BITUMINOUS SURFACING, 2 1/2" THICK
LT STA 13+00 = 28 SQ YDS
RT STA 14+00 = 30 SQ YDS
LT STA 15+00 = 28 SQ YDS
TOTAL = 86 SQ YDS
SEC 35-T20N-R6E, 3RD P.M.

NOTE: ITEMS THAT ARE BOXED-IN PERTAIN TO SECTION 10-34NB-3



DATE	
BY	
PROJECT	
NO. OF SHEETS	
NO. OF THIS SHEET	
NO. OF PAGES	
NO. OF THIS PAGE	
NO. OF SHEETS	
NO. OF THIS SHEET	
NO. OF PAGES	
NO. OF THIS PAGE	

DONALD CHAMBERS DODDS & NEWTON HARRIS DODDS

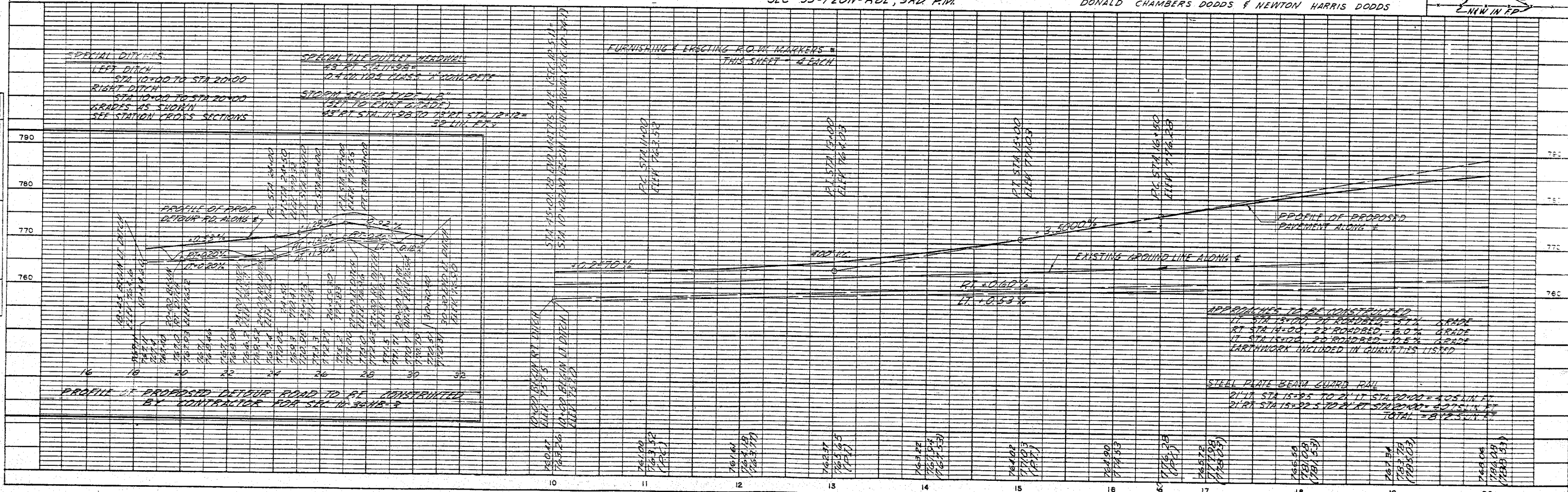
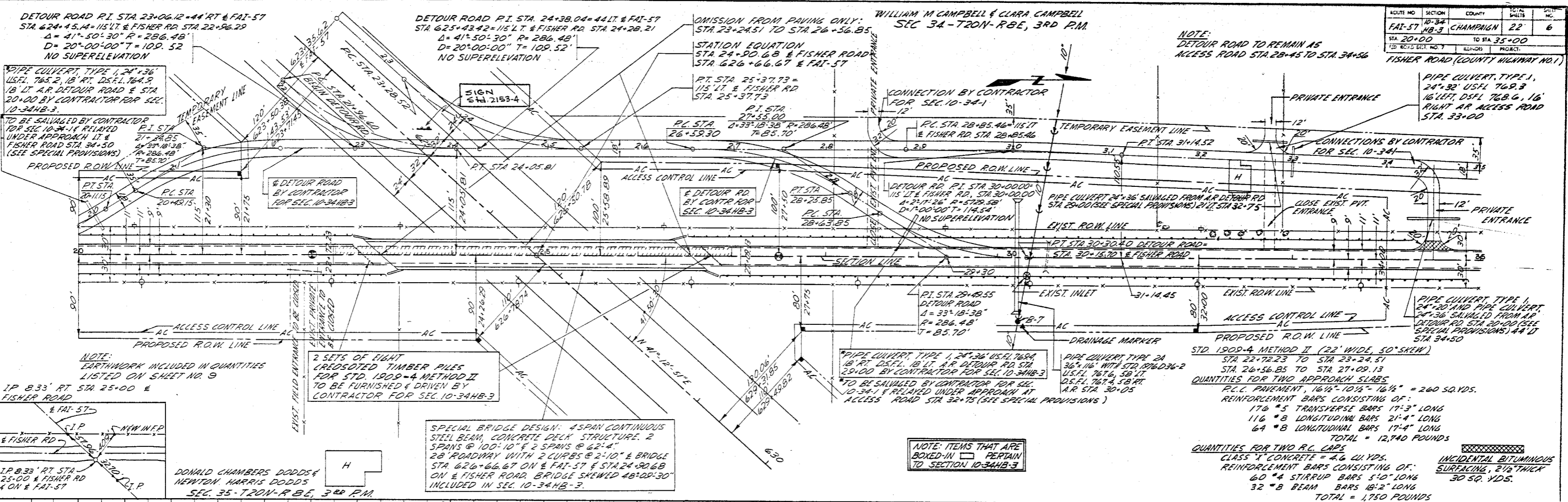


PLATE 1-PLAN PROFILE & P. R. STA-DATA
THE FRASER POST CO. CHICAGO



ROUTE NO.	SECTION	COUNTY	TOTAL LENGTH	SHEET NO.
FBI-57	10-34	CHAMPAIGN	22	6
STA. 20+00	TO STA. 35+00			
10-34	10-34	10-34	10-34	10-34

DATE	BY	REVISION

DATE	BY	REVISION

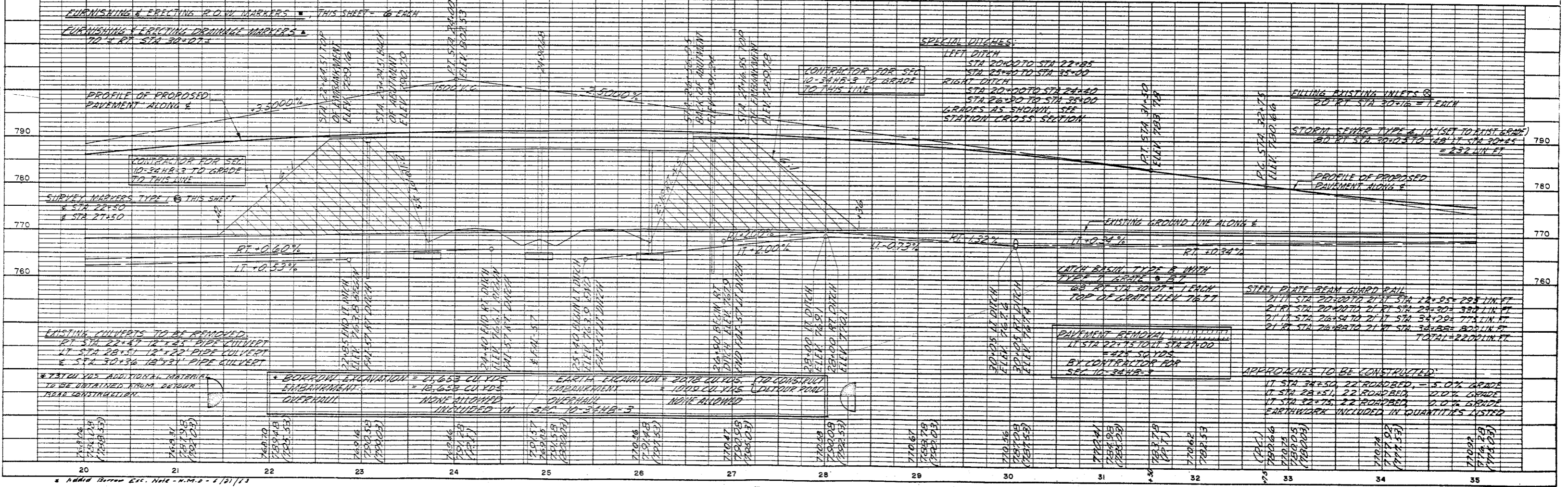
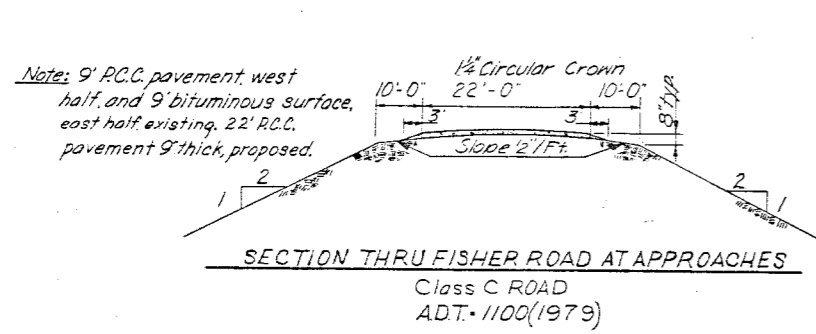
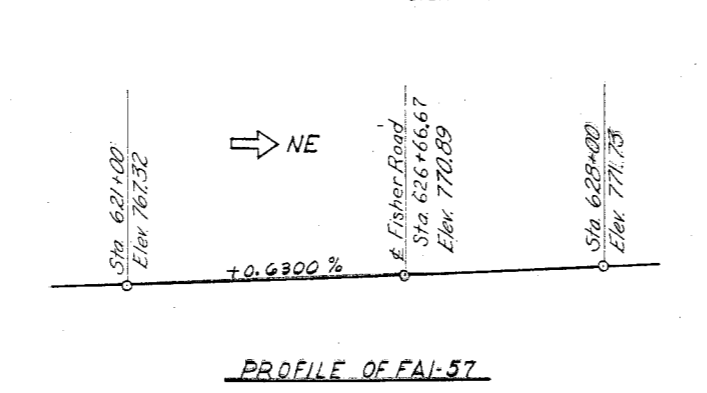
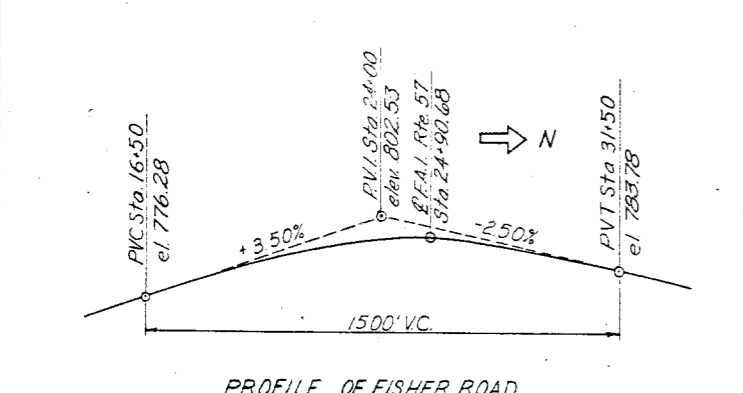
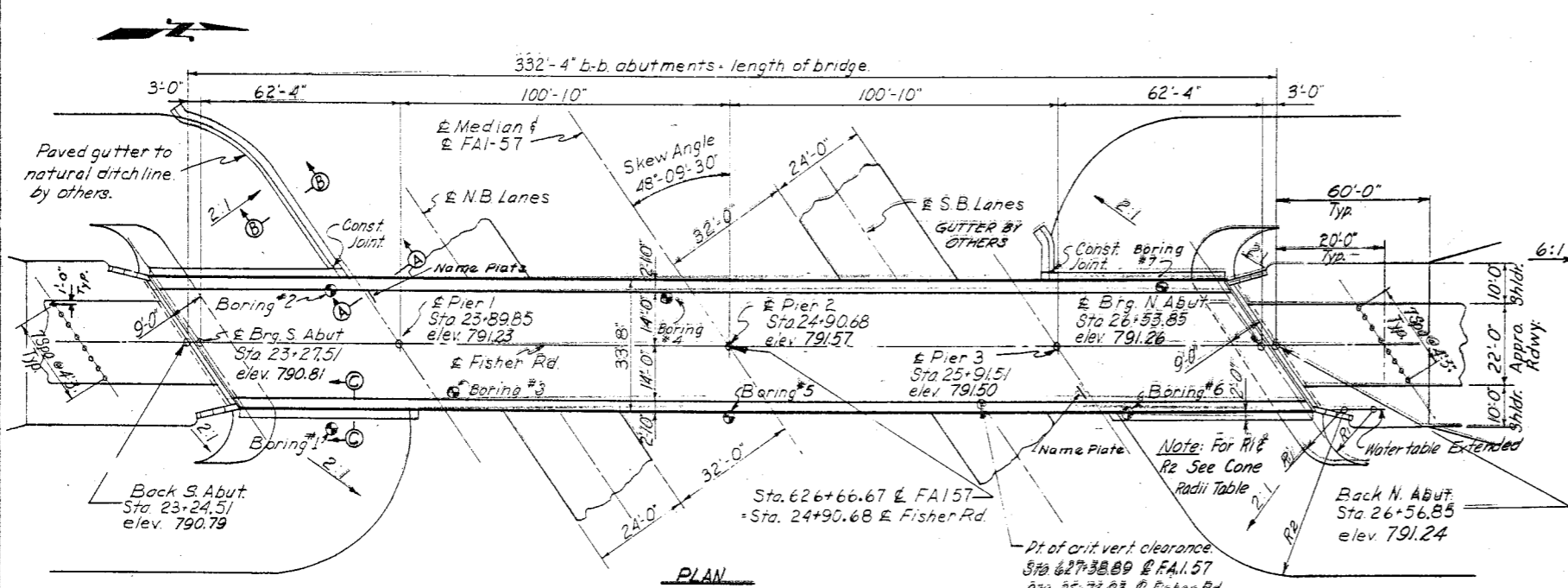
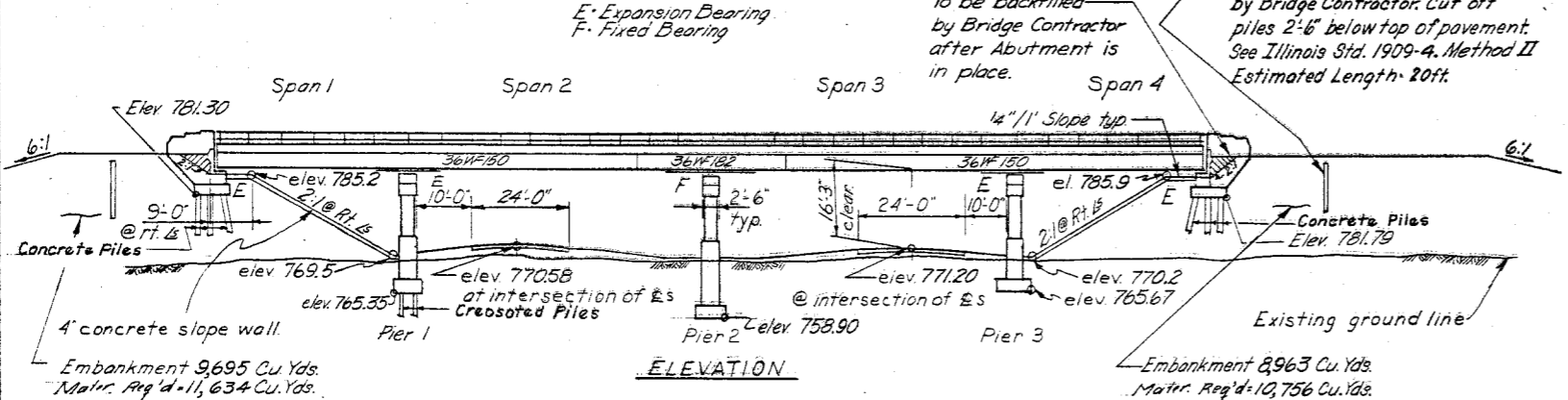


PLATE 1 - PLAN PROFILE B. P. R. STANDARD
THE FREDERICK POST CO., Chicago

B.M. #165 na. bottle cap in fence post
 175' Lt. Sta. 629+35. Elev. 773.41.
 No existing structure.



CONE RADI TABLE

Corner	Station	R ₁	R ₂
S.W.	22+94.50	12'-8"	45'-1"
S.E.	23+32.75	12'-8"	45'-1"
N.W.	26+44.20	12'-4"	43'-2"
N.E.	26+81.50	12'-4"	43'-2"

DESIGN STRESSES
 $f_c = 1400$ psi (Super. & Substruct)
 $f_s = 20,000$ psi (Reinf.)
 $f_s = 20,000$ psi, Struct (A-36)
 $n = 10$
 $v = 75$ psi (footings)
 $\Delta LL = 1/200$ (Composite)
 $f_e = 1000$ psi (Substruct under earth pressure)

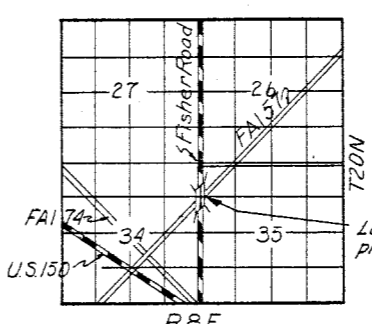
FUNCTIONS OF SKEW ANGLE
 $\sin 48^\circ-09'-30'' = 0.744991$
 $\cos 48^\circ-09'-30'' = 0.667074$
 $\tan 48^\circ-09'-30'' = 1.116804$
LOADING: H20-516-44

- GENERAL NOTES**
- SPECIFICATIONS: THE STATE OF ILLINOIS "STANDARD SPECIFICATIONS FOR ROAD AND BRIDGE CONSTRUCTION" ADOPTED JANUARY 2, 1958 AND THE REVISIONS THERETO SHALL APPLY.
 - CONCRETE: CLASS X CONCRETE SHALL BE USED THROUGHOUT. THE CONCRETE FLOOR SLAB SHALL BE FINISHED IN ACCORDANCE WITH ARTICLE 51.19 OF THE STANDARD SPECIFICATIONS AND SHALL BE POURED IN ONE CONTINUOUS OPERATION BETWEEN CONSTRUCTION JOINTS IN ACCORDANCE WITH ARTICLE 51.11. COARSE AGGREGATE WHICH IS TO BE USED IN END POSTS MUST BE FREE OF CHERT, FLINT LIMONITE, LIMONITE AND SOFT SAND-STONE.
 - PAINTS: EXCEPT AS OTHERWISE PROVIDED ALL STRUCTURAL STEEL AND METAL HANDRAIL SHALL RECEIVE ONE SHOP COAT OF RED LEAD PAINT AND TWO FIELD COATS OF ALUMINUM PAINT IN ACCORDANCE WITH ARTICLES 56.1 THROUGH 56.5 OF THE STANDARD SPECIFICATIONS. ALL PAINT SHALL BE FURNISHED AND APPLIED BY THE CONTRACTOR. THE EXPOSED SURFACES OF EXPANSION GUARDS SHALL BE GIVEN TWO SHOP COATS OF RED LEAD PAINT.
 - PRECURING: HOLES SHALL BE PRECURED FOR THE ABUTMENT PILES IN ACCORDANCE WITH ARTICLE 60.9 (c) OF THE STANDARD SPECIFICATION.
 - TEST PILES: THE CONTRACTOR SHALL DRIVE ONE CONCRETE TEST PILE AT EACH ABUTMENT AND ONE TIMBER TEST PILE AT PIER 1 IN PERMANENT LOCATIONS IN ACCORDANCE WITH ARTICLE 60.15 OF THE STANDARD SPECIFICATIONS BEFORE ORDERING THE REMAINDER OF THE PILES.
 - PERMANENT FORMS WILL NOT BE PERMITTED IN FORMING THE CONCRETE FLOOR.
 - MINIMUM LAP FOR ALL REINFORCING BARS SHALL BE 20 DIAMETERS.
 - DETOUR ROAD: THE BRIDGE CONTRACTOR SHALL CONSTRUCT AND MAINTAIN A DETOUR ROAD AROUND THE BRIDGE CONSTRUCTION SITE IN ACCORDANCE WITH THE PLANS AND SPECIAL PROVISIONS.

STATION 626+66.67
 BUILT 196 BY
 STATE OF ILLINOIS
 F.A.I. RTE. 57 SEC. 10-34HB-3
 F.A. PROJECT I-57-5(15)
 LOADING H20-516-44

See Standard 2113-1 Locate Name Plate as shown on Bridge Dwg. 5 of 10.

NAME PLATE DATA



RBE LOCATION SKETCH
 Champaign County

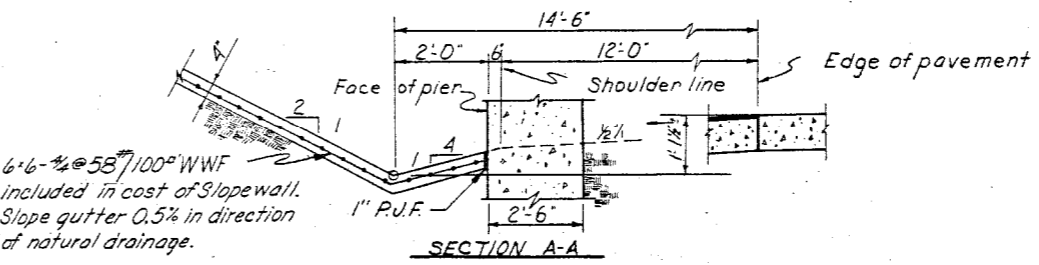
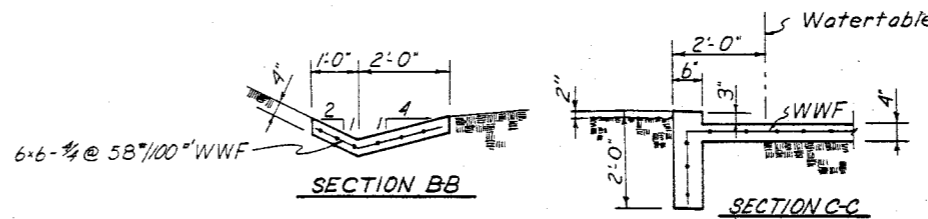
SECTION 10-34HB-3
TOTAL BILL OF MATERIAL

ITEM	UNIT	SUPER.	SUBSTR.	TOTAL
*Borrow Excavation	Cu. Yds.		21,653	21,653
Class A Excav. For Structures	Cu. Yds.		365	365
Furn. & Erecting Struct. Steel	Lbs.	379,898		379,898
Class X Concrete	Cu. Yds.	317.1	330.3	647.4
Metal Handrail	Lin. Ft.	659		659
Reinforcement Bars	Lbs.	63,097	26,026	89,123
Concrete Piles	Lin. Ft.		600	600
Test Piles (Concrete)	Each		2	2
Name Plates	Each		2	2
Slope Wall 4'	Sq. Yds.		580	580
Crescoted Piles (up to 20')	Lin. Ft.		980	980
Test Pile (Timber)	Each		1	1
Protective Coat	Sq. Yds.	1,310		1,310
Bridge Seat Sealant	Lump Sum			

* 737 Cu. Yds. to be obtained from DETOUR ROAD CONSTRUCTION. OTHER QUANTITIES FOR DETOUR ROAD ARE SHOWN IN SUMMARY OF QUANTITIES ON SHEET 3 OF 22. NO OVERTHAUL SHALL BE ALLOWED.

** Bridge Seat Sealant shall be applied at the abutments, only. (See Special Provisions)

*** Includes excavation for slope wall



SLOPE WALL AND GUTTER DETAILS

DESIGNED BY: [Signature] CHECKED BY: DATE: IN CHARGE: M.P.T. C.D.A. 1/25/63

Rev. 5-10-63 VDS Rev. Appr. Piles 15' to 20'. Locate Name Pl. Rev. Quant. Added Bridge Seat Sealant; Cre. Piles: 900 to 980 lin. ft. Revised Quant. of Reinf. Bars from 88946 to 89123 1-23-64 J.M.J.

P.R. Added *** Includes excavation for slope wall. 3-10-64

* Certified Bureau Rec. 10/10-11-64-6/12/12

NO.	REVISION	BY	DATE
1	Revised Vertical Geometry	C.B.P.	10-1-62

GENERAL PLAN AND ELEVATION
 SECTION 10-34HB-3 STATION 626+66.67
 F.A.I. RTE. 57 PROJECT I-57-5(1)
 CHAMPAIGN COUNTY
CLARK, DAILY, DIETZ AND ASSOCIATES
 CONSULTING ENGINEERS
 URBANA, ILLINOIS

DESIGNED C.B.P.	SCALE AS NOTED	SHEET 1
DRAWN B.D.S.		
CHECKED C.B.P.	DATE 9-27-61	OF 10

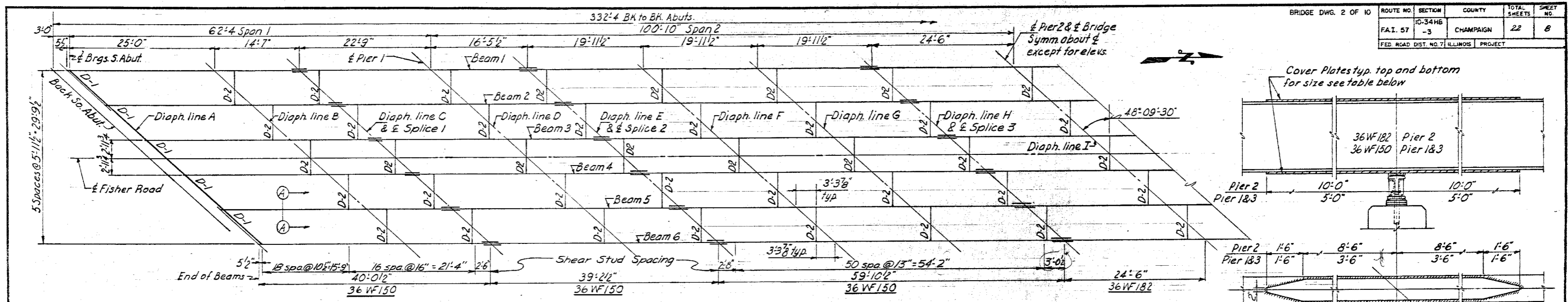


TABLE OF FILL PLATES

Beam	S. Abut.	Pier 1	Pier 2	Pier 3	N. Abut.
2					9x6x20 1/2
3			10x8x19 1/2	10x12x19 1/2	9x6x20 1/2
4	9x6x20 1/2	10x8x19 1/2	10x12x19 1/2	10x12x19 1/2	
5	9x6x20 1/2	10x8x19 1/2			
6			10x12x19 1/2		

Note: No fill plates required at other bearing locations.

TABLE OF TOP OF BEAM ELEVATIONS

Beam	Brigs. S. Abut.	Splice 1	Pier 1	Splice 2	Splice 3	Pier 2	Splice 4	Splice 5	Pier 3	Splice 6	Brigs. N. Abut.
1	789.92	790.20	790.36	790.48	790.62	790.72	790.82	790.82	790.77	790.70	790.58
2	790.08	790.33	790.51	790.62	790.74	790.84	790.93	790.92	790.87	790.79	790.66
3	790.20	790.46	790.61	790.72	790.82	790.91	791.00	790.97	790.91	790.83	790.69
4	790.25	790.50	790.64	790.75	790.84	790.92	791.00	790.96	790.89	790.81	790.65
5	790.24	790.48	790.62	790.72	790.79	790.87	790.94	790.88	790.81	790.72	790.56
6	790.18	790.41	790.54	790.64	790.69	790.76	790.83	790.75	790.68	790.58	790.41

Note: Elevations are to top of rolled beam flange including locations where splice plates or cover plates are present. Beams are assumed straight between splices before dead load deflection. Dead load deflection is not included.

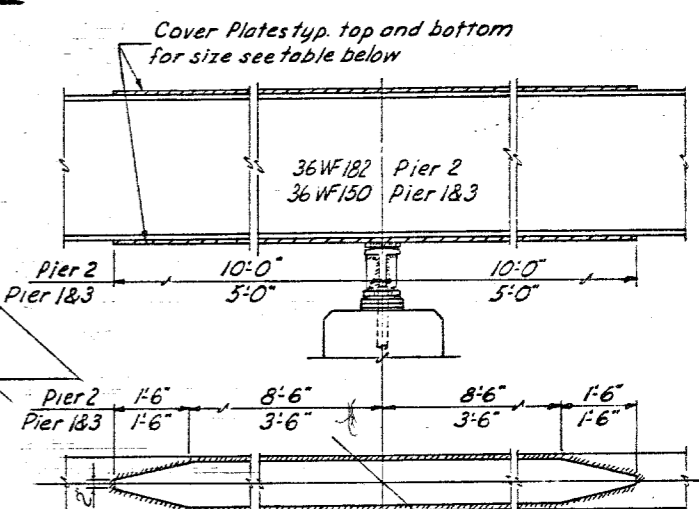
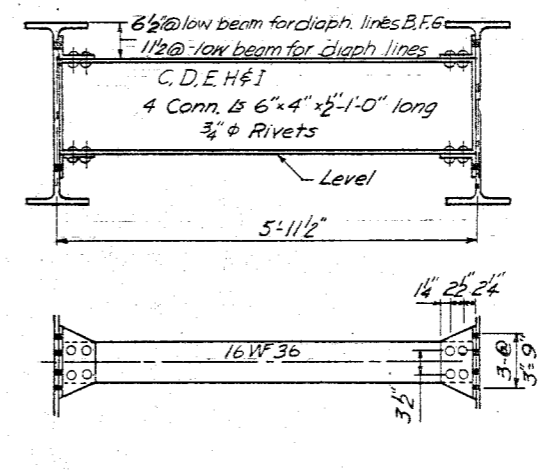
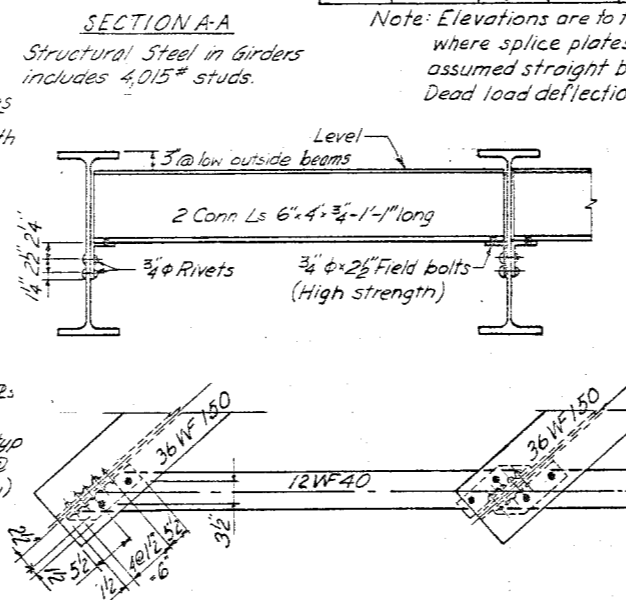
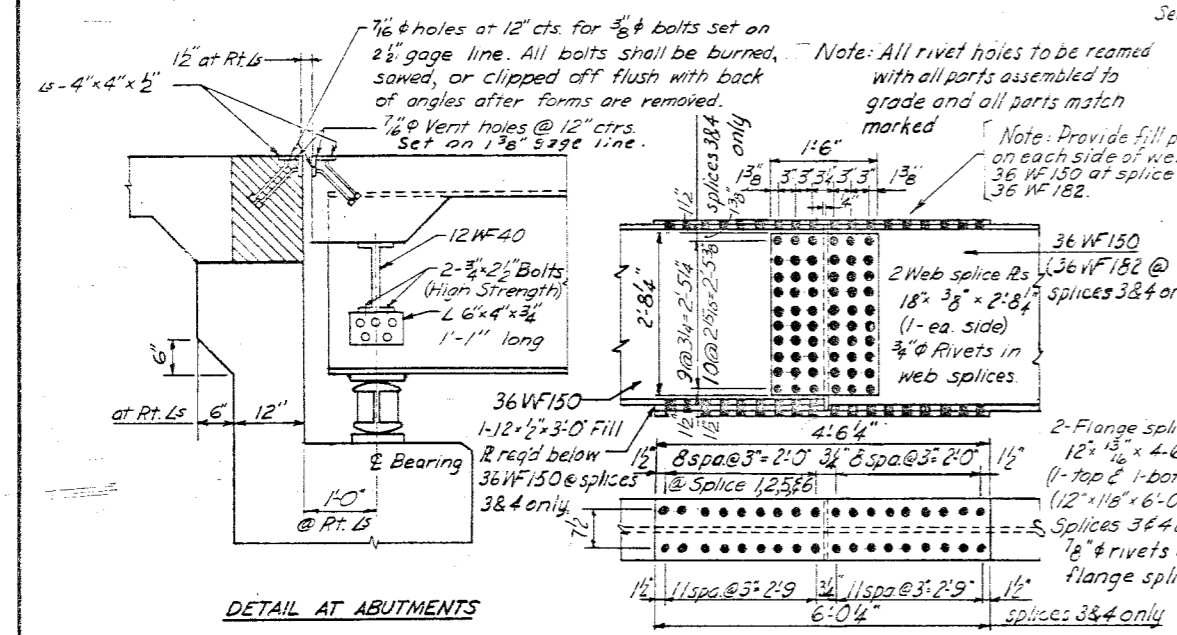
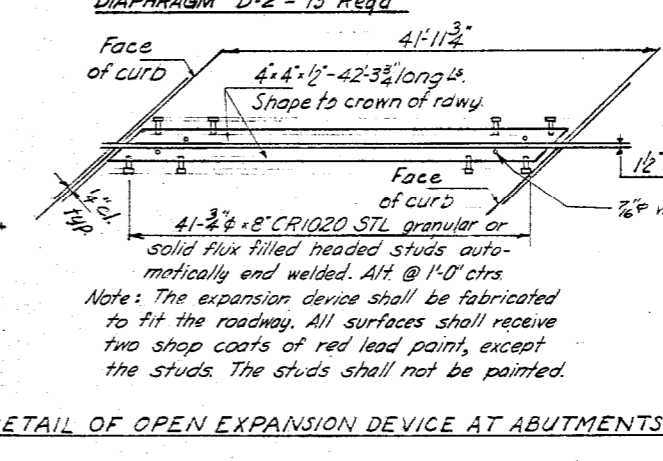
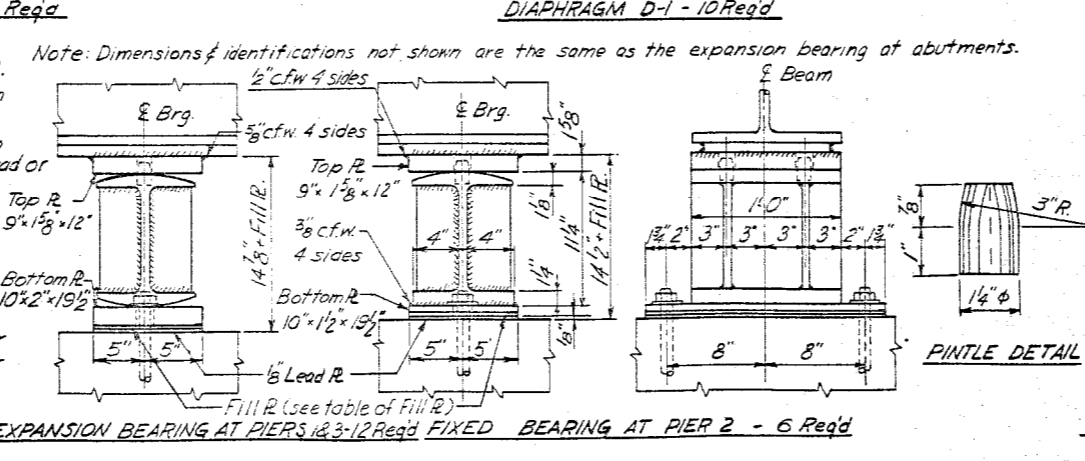
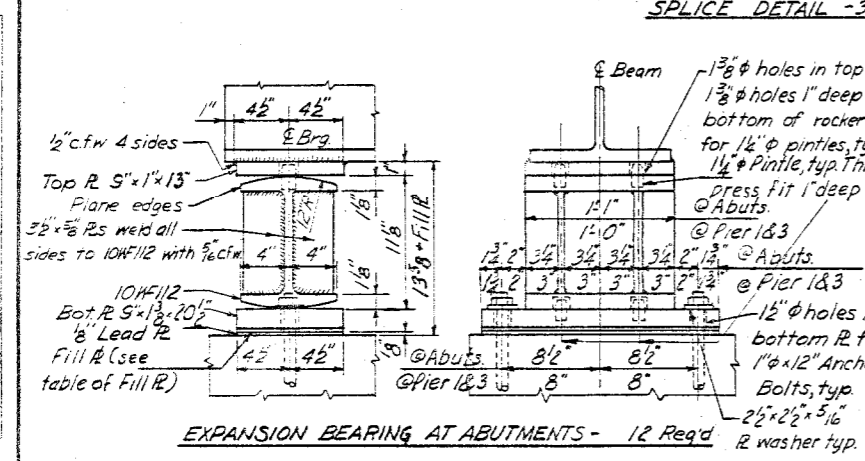


TABLE OF COVER PLATES

Location	Size	No. Req'd
Piers 1&3	11' 1/2" x 10'-0"	24
Pier 2	11' 1" x 20'-0"	12



- SPECIAL NOTES:**
- Cover plates and the beams to which they are welded shall conform to the specifications for Structural Steel A.S.T.M. designation A-36.
 - Beams are not to be cambered for dead load deflection but advantage of natural camber is to be taken.
 - Anchor bolts shall be set before riveting cross frames over piers & abuts. See Art. 54.9(f) for setting of masonry bearing plates and anchor bolts.
 - All bolsters, rockers, bearing plates, lead plates, anchor bolts, pintles and washers shall be fabricated, painted and set in accordance with art. 51.15 and are included for payment as structural steel.
 - High strength bolts may be substituted for field rivets in accordance with Art. 54.9(i) of the Standard Specifications.
 - Rivets 3/4" phi, open holes 1 1/4" unless noted.



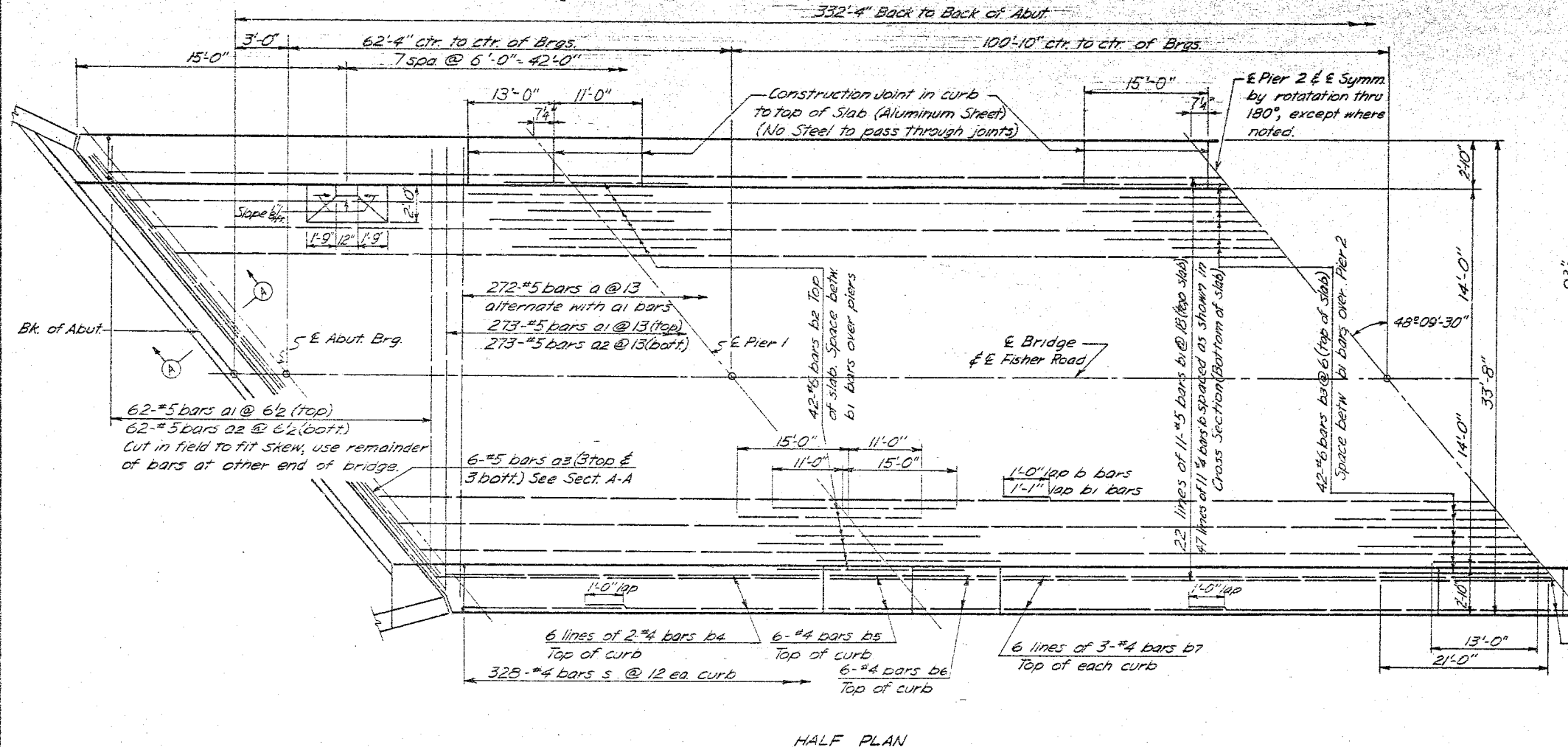
BILL OF MATERIAL

Item	Unit	Quantity
Structural Steel in Girders	Lbs.	342,251
Structural Steel in Diaphragms	Lbs.	26,252
Structural Steel in Bearings	Lbs.	9,067
Structural Steel in Exp. Joint	Lbs.	2,348
Total Structural Steel	Lbs.	379,918

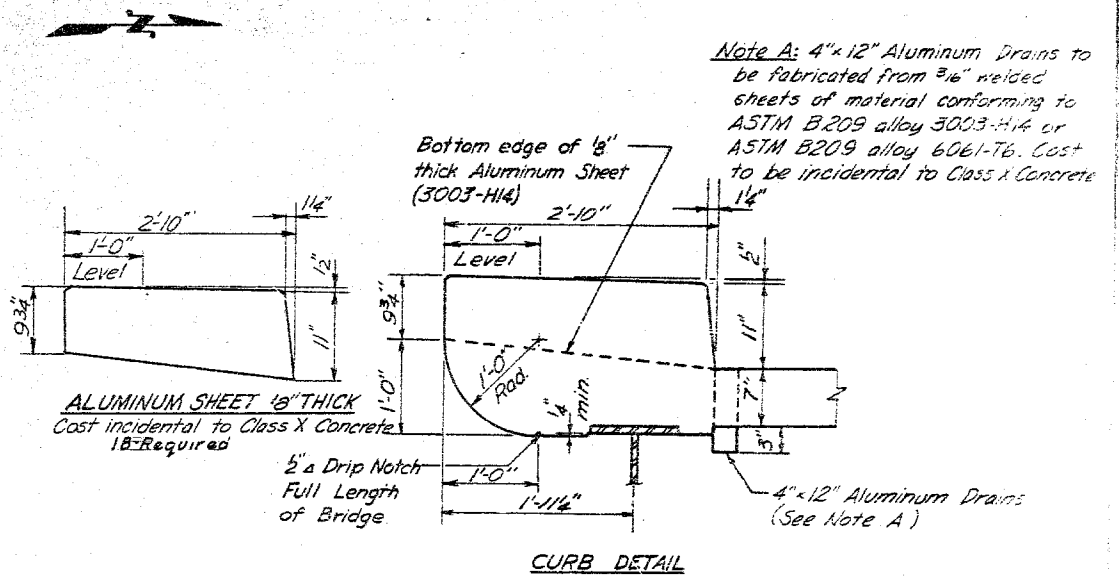
* Includes 4,015 # 3/8" x 4" Studs

STEEL FRAMING PLAN
 F.A.I. RTE. 57 SEC. 10-34HB-3
 CHAMPAIGN COUNTY
 STA. 626+6667

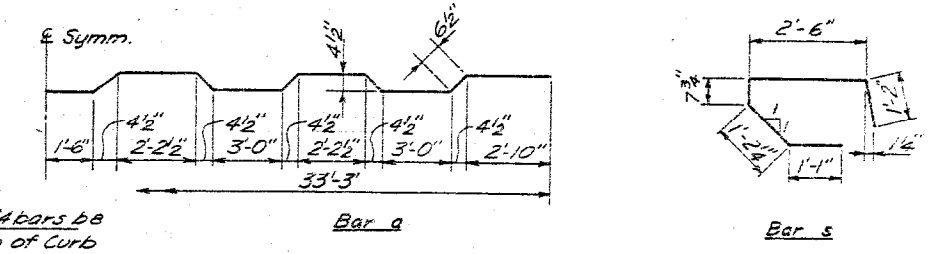
Note: Floor Drains to be placed at each curb in end spans only.



HALF PLAN



CURB DETAIL

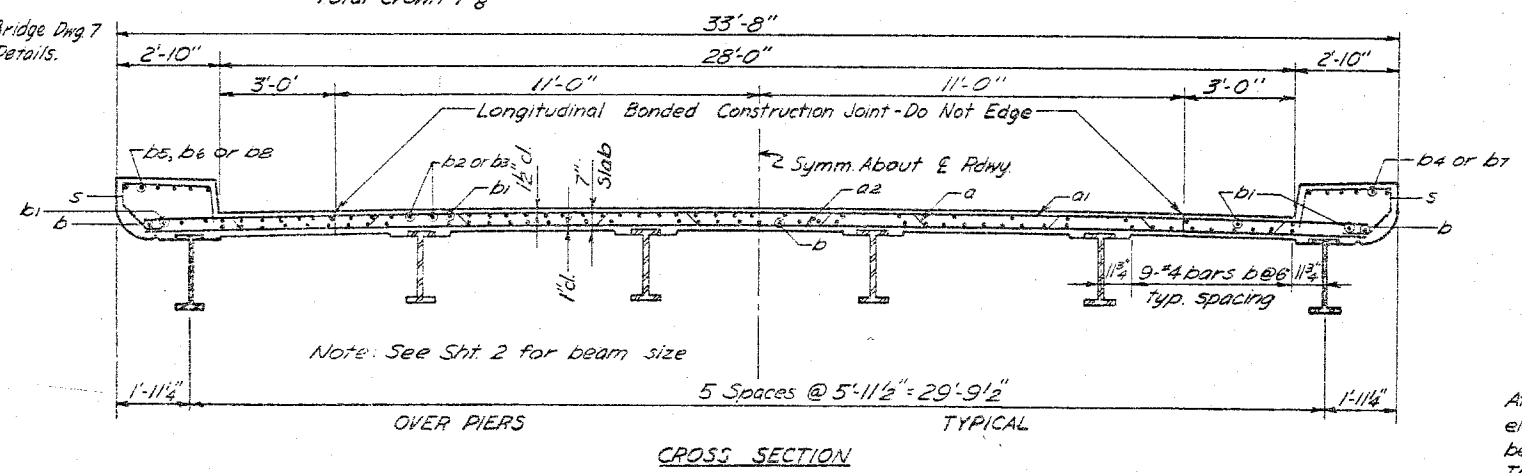


BILL OF MATERIAL

Bar No.	Size	Length	Shape
a	272 #5	34'-11"	U
a1	335 #5	33'-3"	U
a2	335 #5	32'-9"	U
a3	12 #5	47'-0"	U
b	517 #4	31'-0"	U
b1	242 #5	3'-0"	U
b2	84 #6	26'-0"	U
b3	42 #6	34'-0"	U
b4	48 #4	25'-3"	U
b5	24 #4	12'-6"	U
b6	24 #4	15'-6"	U
b7	72 #4	25'-3"	U
b8	28 #4	14'-6"	U
s	656 #4	6'-7"	C
Class X Concrete Cuscs 3171			
Reinforcement Bars Lbs 135,000			
Protective Coat Sq. Yds. 300			

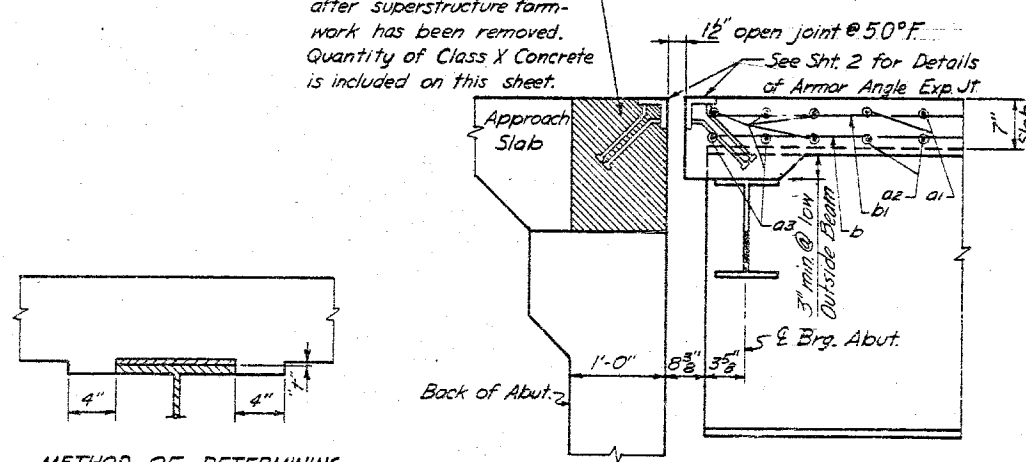
Roadway Crown: 1/4" circular curve for 11' each side of E, remainder sloped at 0.227 in. per ft. Total Crown 1/8"

Note: See Bridge Dwg 7 for Handrail Details.



CROSS SECTION

Shaded area to be poured after superstructure formwork has been removed. Quantity of Class X Concrete is included on this sheet.



SECTION A-A

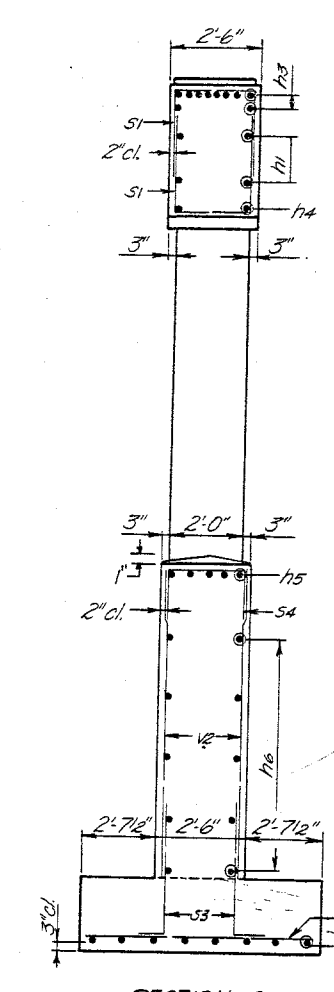
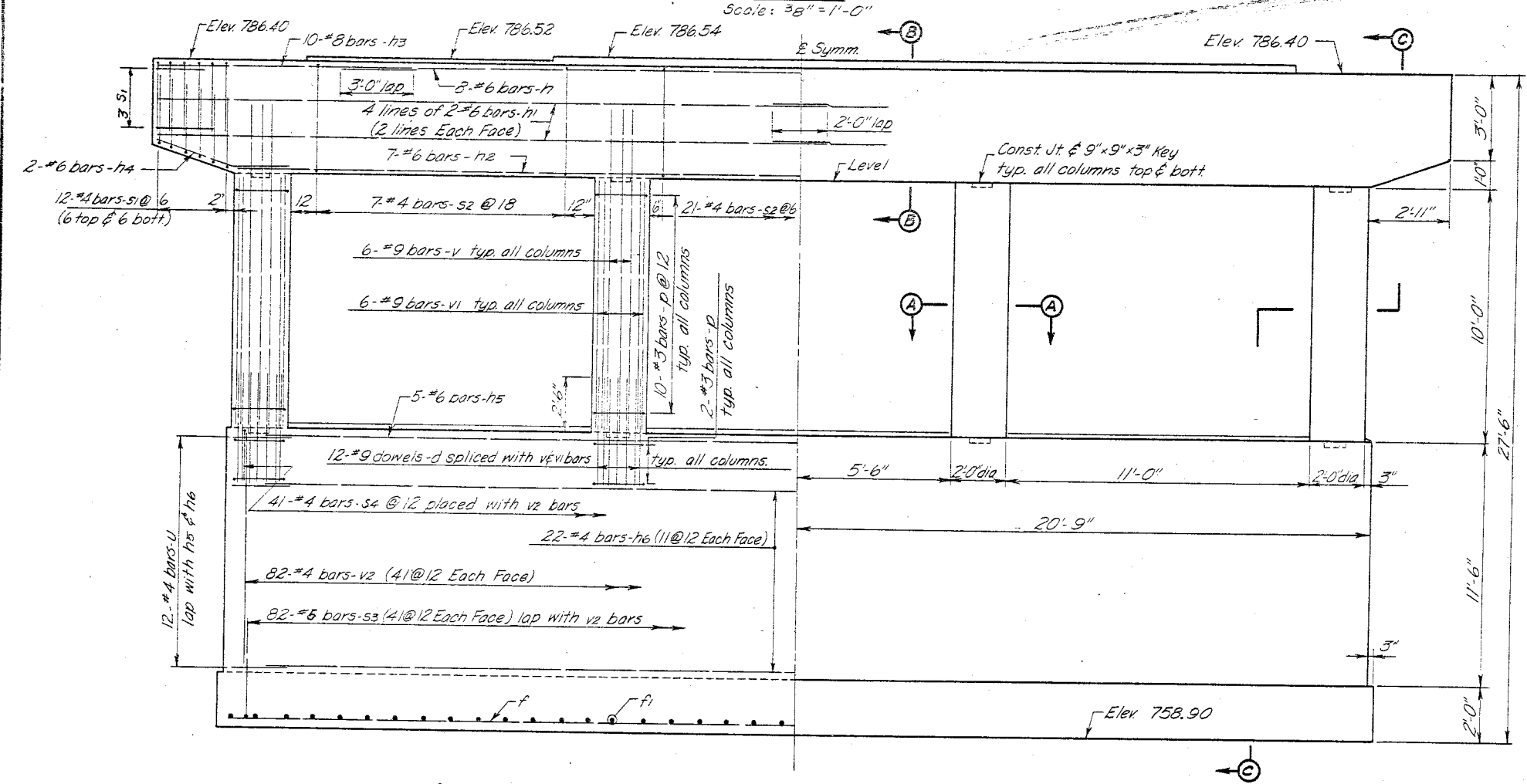
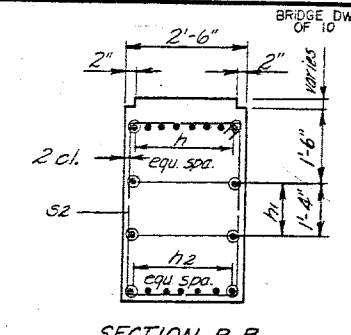
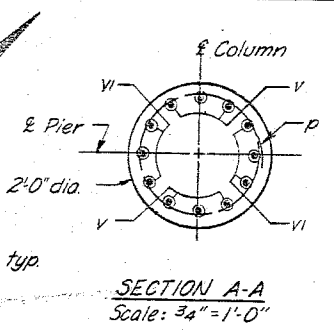
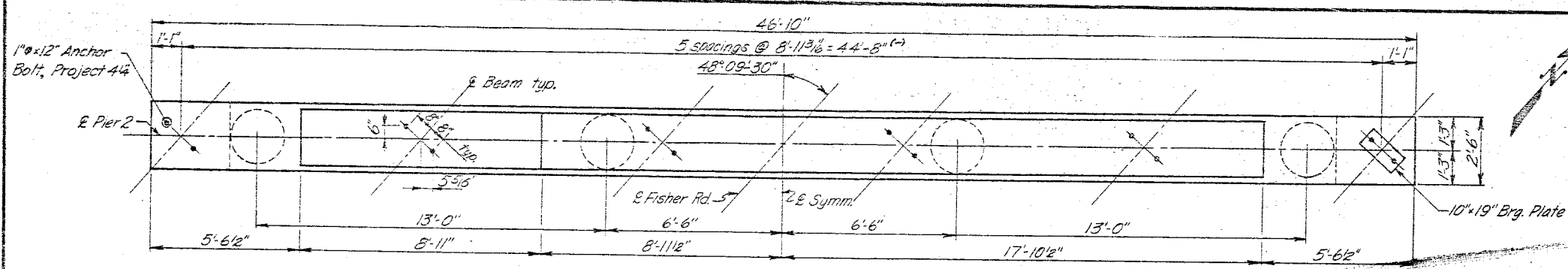
METHOD OF DETERMINING FILLET HEIGHT "f"

After all Structural Steel has been erected, elevations of the top flanges of the beams shall be taken at the stations shown on Bridge Dwg. 8. These elevations subtracted from the "Theoretical Grade Elevations Adjusted for Dead Load Deflection" shown on Bridge Dwg. 8 floor thickness equals the fillet heights above top of beams.

SUPERSTRUCTURE
FAI RTE 57 SEC. 10-34HB-3
CHAMPAIGN COUNTY
STA. 626+66.67

Rev. 5-10-83 VDS Rev. Sect. A-A (@50°F); Curb Detail (Alum. Shts. 1/8" Req.)

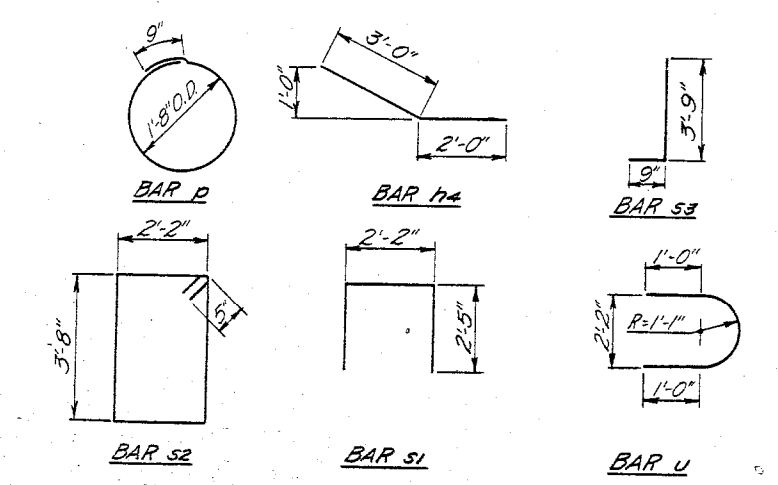
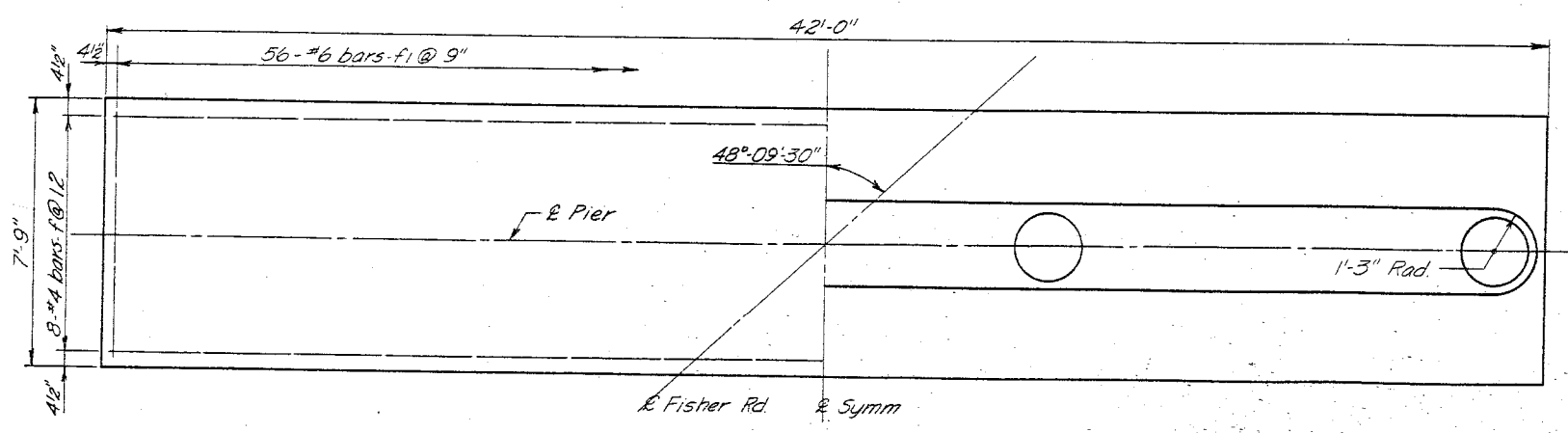
DESIGNED BY: PAUL... DRAWN BY: PAUL... CHECKED BY: PAUL... DATE: 10/28/83



BILL OF MATERIAL

Bar	No	Size	Length	Shape
d	48	#9	5'-0"	—
f	8	#4	41'-6"	—
f1	56	#6	7'-3"	—
h	8	#6	33'-6"	—
h1	8	#6	24'-3"	—
h2	7	#6	41'-0"	—
h3	20	#8	9'-6"	—
h4	4	#6	5'-0"	—
h5	5	#6	39'-6"	—
h6	22	#2	39'-6"	—
p	48	#3	6'-0"	○
s1	30	#4	7'-0"	—
s2	35	#4	12'-6"	—
s3	82	#5	4'-6"	—
s4	41	#4	4'-2"	—
u	24	#4	5'-5"	—
v	24	#9	12'-6"	—
vi	24	#9	9'-9"	—
v2	82	#4	11'-3"	—

Class X Concrete Cu Y's 892
 Reinforcement Bars Lts 7640
 Class A Excav. for Struct. Cu Y's 2.8



PIER 2
 FAI RTE. 57 SEC. 10-34HB-3
 CHAMPAIGN COUNTY
 STA. 626+66.67
 BRIDGE DWG. 4 OF 10

DESIGNED BY DATE CHECKED BY DATE IN CHARGE
 DAS 10-11-62 CBF 10-15-62 MFT

Revised Quant. of Reinf. Bars from 7550 to 7640

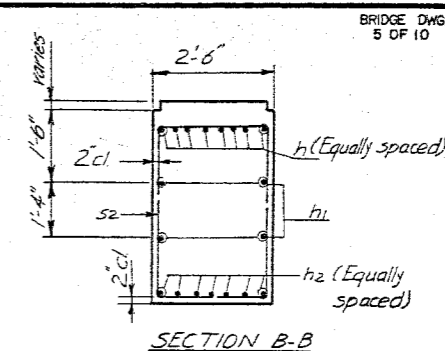
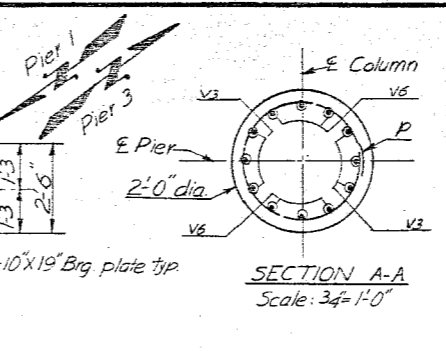
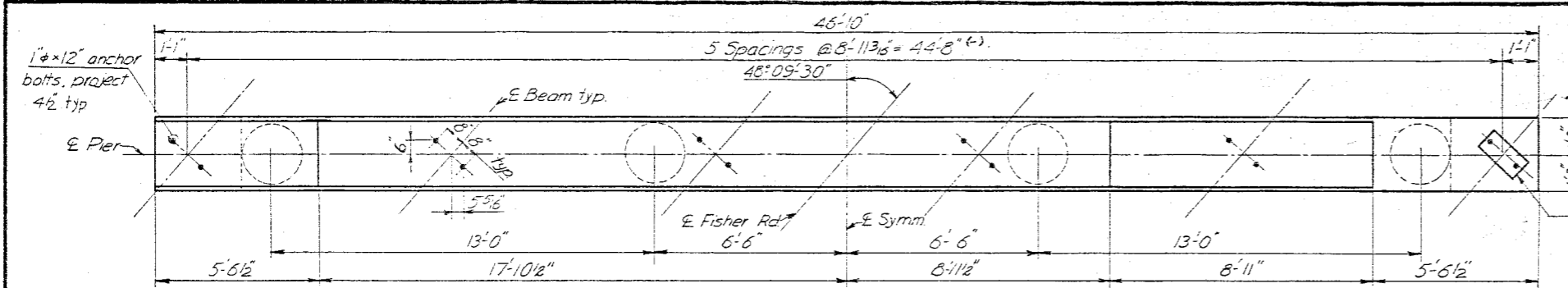
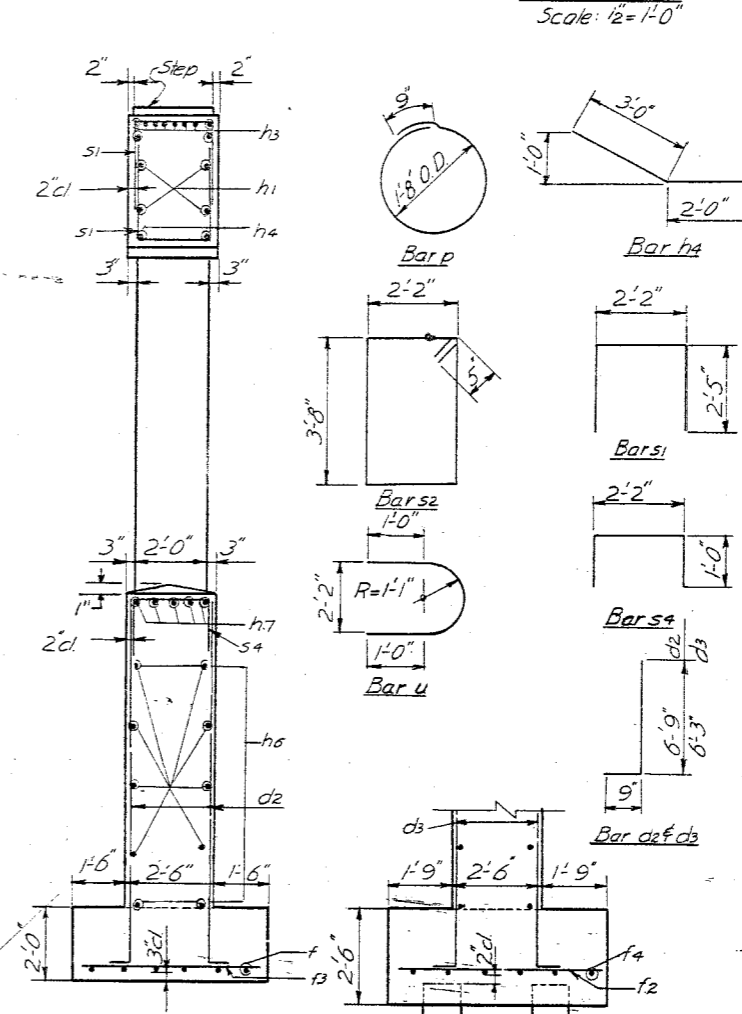
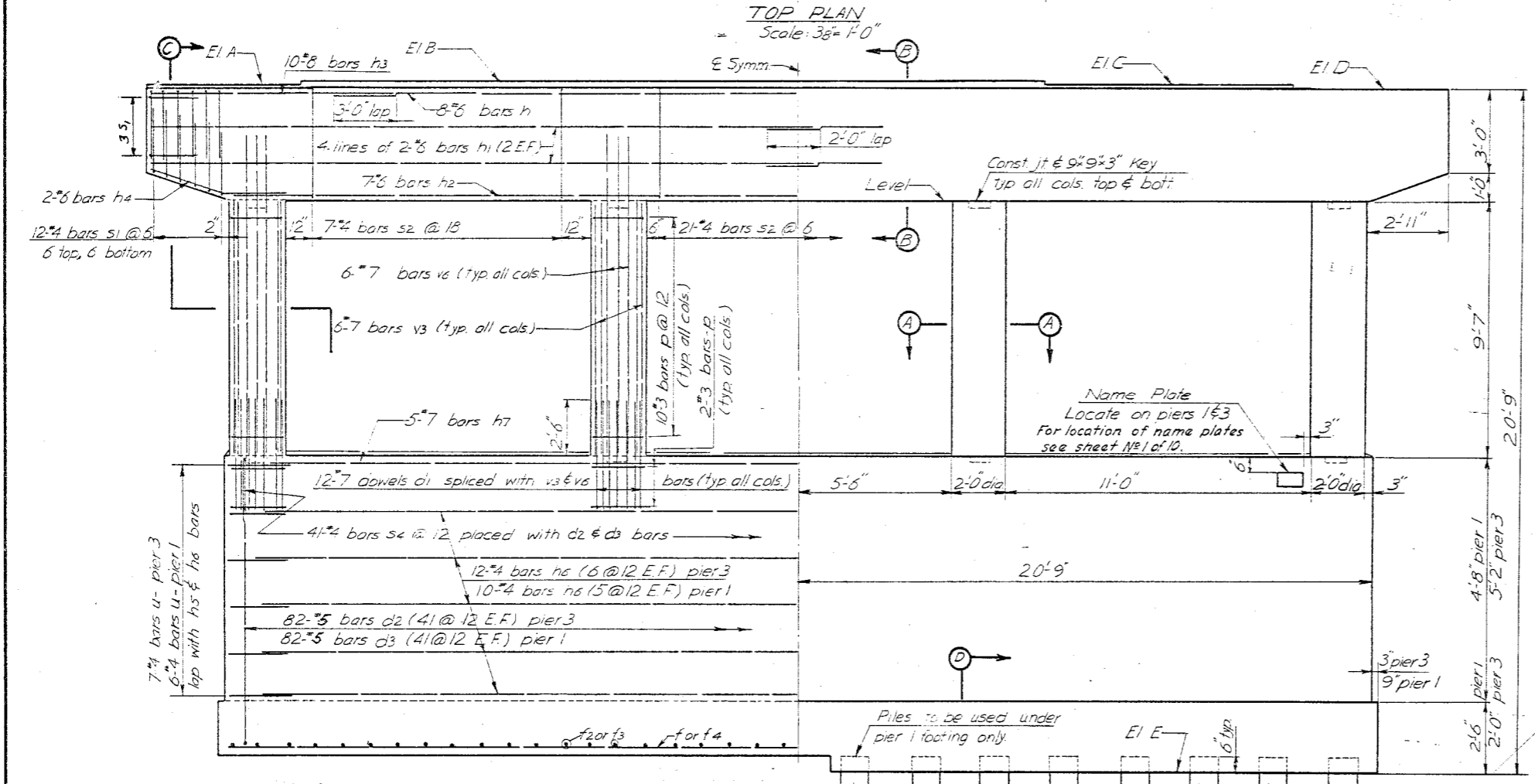


TABLE OF ELEVATIONS

Elev	Pier 1	Pier 3
A	786.28	786.51
B	786.35	786.61
C	786.25	786.55
D	786.10	786.42
E	765.35	765.67



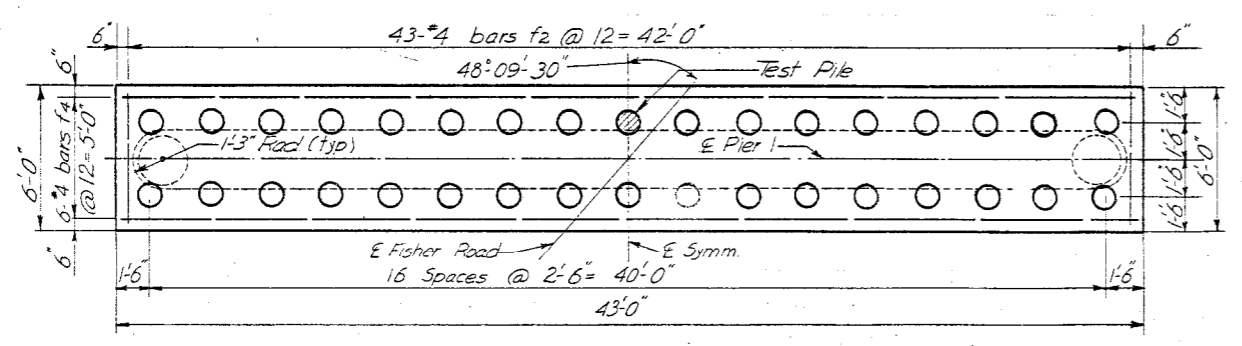
BILL OF MATERIALS - 2 PIERS

Bar	No	Size	Length	Shape
d1	96	#7	5'-0"	
d2	82	#5	7'-6"	L
d3	82	#5	7'-0"	L
f	6	#4	4'-6"	
f2	43	#4	5'-6"	
f3	42	#4	5'-0"	
f4	6	#4	42'-6"	
h	16	#6	33'-6"	
h1	16	#6	24'-3"	
h2	14	#6	41'-0"	
h3	40	#8	9'-6"	
h4	8	#8	5'-0"	
h6	22	#4	39'-6"	
h7	10	#7	39'-6"	
p	96	#3	6'-0"	O
s1	60	#4	7'-0"	□
s2	70	#4	12'-6"	□
s4	82	#4	4'-2"	□
u	26	#4	5'-5"	U
v3	48	#7	9'-5"	
v6	48	#7	12'-6"	
Class X Concrete Cu Yds 122.1				
Reinforcement Bars Lbs 10,473				
C.I.A. Exar. for Struct Cu Yds 147				
Name Plates Each 2				
Cresoted Piles (upto 20) Lin Ft 660				
Test Piles (Timber) Each 1				

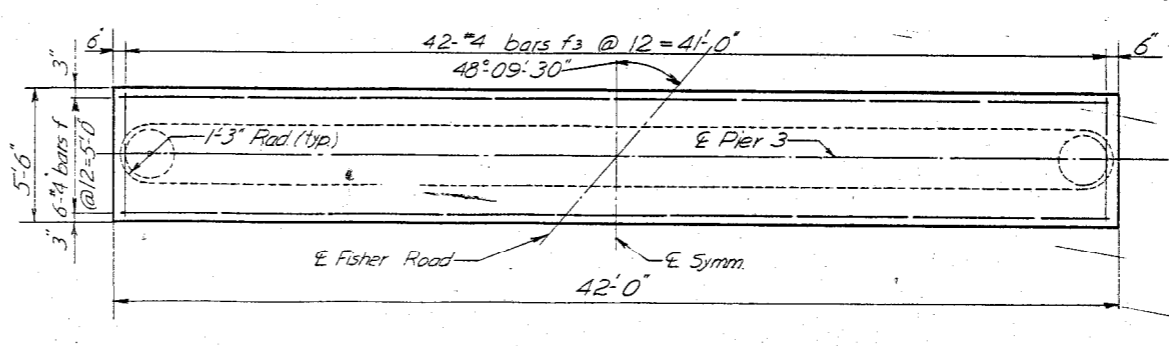
Note: Piers 1 & 3 are identical except for footings. Pile foundation is used under pier 1, while pier 3 is on spread footing.

ELEVATION
 Looking south for pier 1
 Looking north for pier 3

PILE DATA
 Type ----- Cresoted
 Min. Capacity ----- 16 Tons
 Estimated Length ----- 20 Ft.
 No. Required ----- 33 (Does not include test pile)
 Test Piles ----- 1
 (-Piles to be used for Pier 1 fig.)



FOOTING PLAN - PIER 1
 Scale: 1/4"=1'-0"



FOOTING PLAN - PIER 3
 Scale: 1/4"=1'-0"
 Maxm. soil pressure = 4600 P.S.F.

PIERS 1 & 3
 F.A.I. RTE. 57 SEC. 10-34HB-3
 CHAMPAIGN COUNTY
 STA. 626+66.67

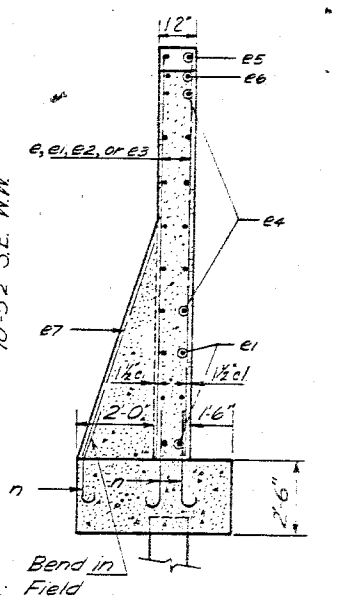
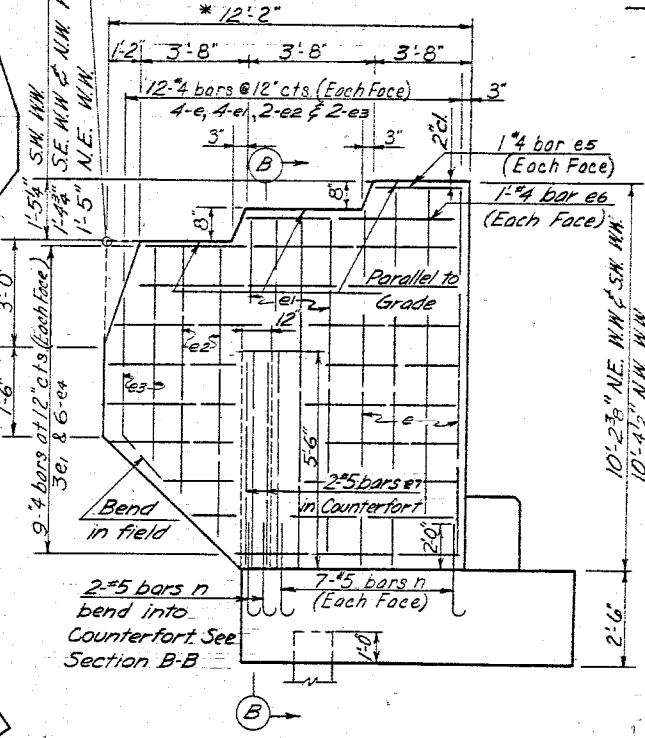
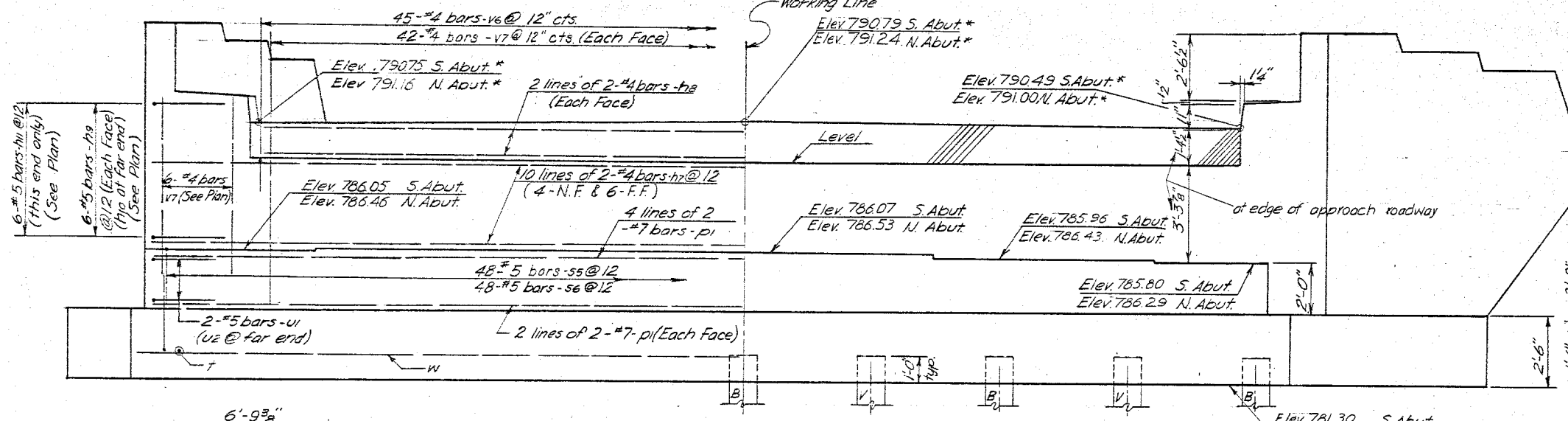
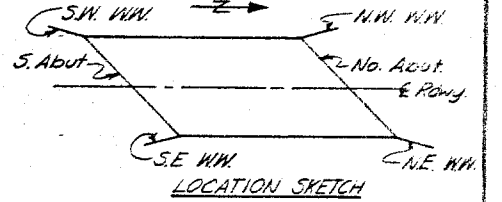
Rev. 5-10-63 VDS Added note regarding location of name plates.
 Revised Quant. of Reinf. Bars from 10336 to 10473 1-23-64 J.M.J.

DESIGNED BY DATE CHECKED BY DATE IN CHARGE
 DAS WAK 10-24-61 HP 10-24-61 M.F.T.
 M.K. 12-22-62 C.R.P. 10-28-61

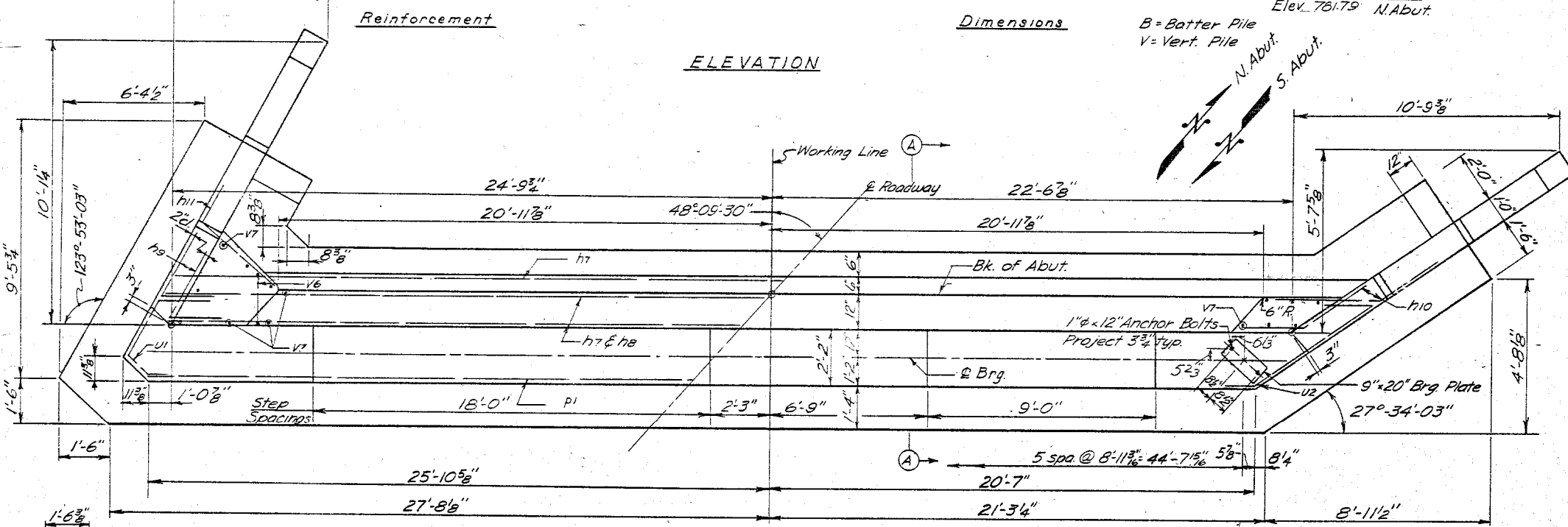
* Elevations given along back of Abutment.
 Note: Hatched area to be poured after Superstructure formwork has been removed. This quantity of Class X Concrete to be included with the Superstructure.

Elev. 792.55 S.W. W.W.
 Elev. 792.86 S.E. W.W.
 Elev. 793.27 N.W. W.W.
 Elev. 793.07 N.E. W.W.

* Along inside face of wing.



WINGWALL ELEVATION
 Showing Dimensions & Reinforcement

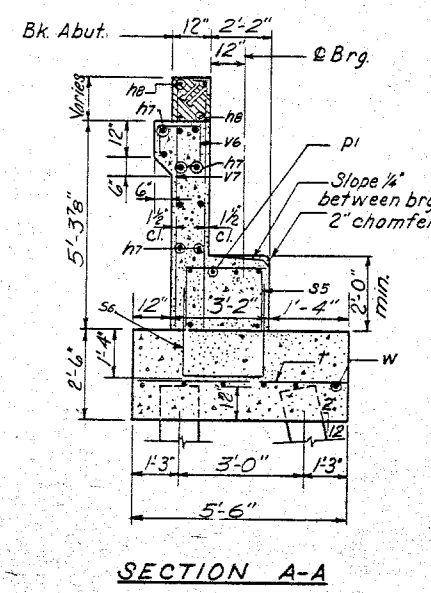
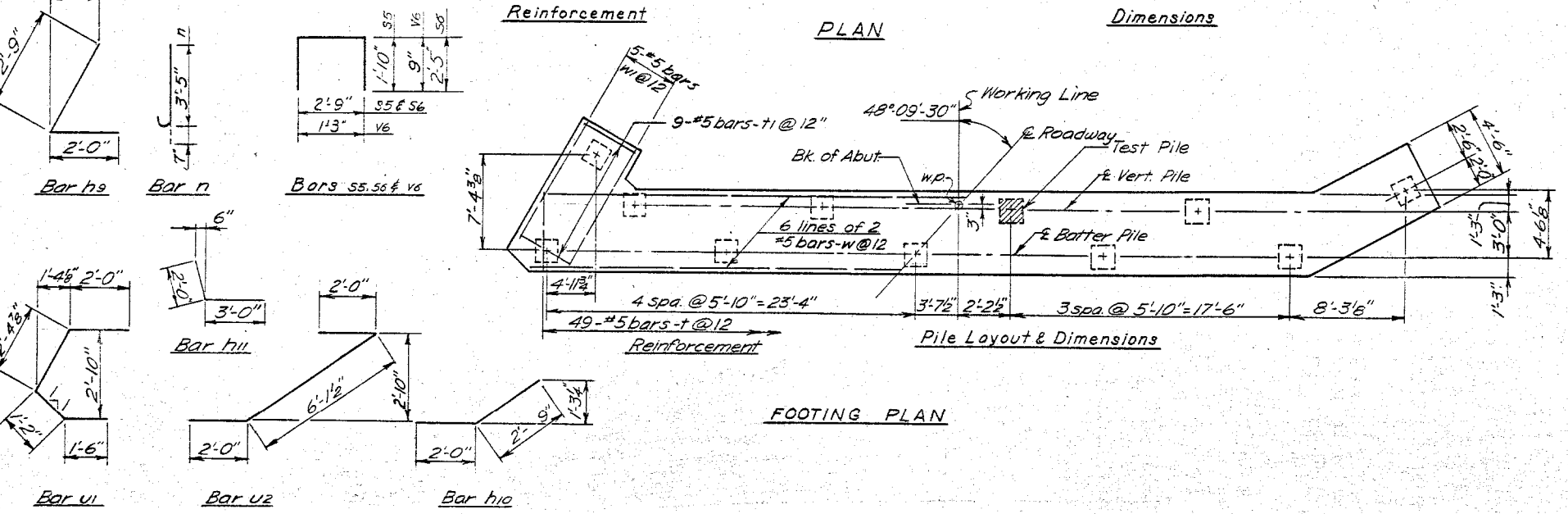


BILL OF MATERIAL
 (Two Abutments)

Bar No.	Size	Length	Shape	Bar No.	Size	Length	Shape
e	32 #4	10'-0"	—	t	98 #5	5'-0"	—
e1	56 #4	9'-6"	—	t1	36 #5	4'-0"	—
e2	16 #4	6'-6"	—	u1	4 #5	7'-1"	C
e3	16 #4	5'-0"	—	u2	4 #5	10'-2"	7
e4	48 #4	10'-6"	—	v6	90 #4	2'-9"	□
e5	8 #4	3'-6"	—	v7	192 #4	6'-6"	—
e6	8 #4	7'-0"	—				
e7	8 #5	7'-0"	—				
h7	40 #4	25'-6"	—				
h8	16 #4	21'-9"	—				
h9	24 #5	4'-9"	L	w	24 #5	28'-0"	—
h10	24 #5	4'-9"	L	w1	20 #5	8'-6"	—
h11	12 #5	5'-0"	L				
n	64 #5	4'-0"	—				
				Class X Concrete Cu Yes 118.4			
				Reinforcement Bars Lbs 79.3			
				Concrete Piles Linft 600			
p1	24 #7	26'-0"	—	Test Piles (Concrete) Each 2			
s5	96 #5	6'-5"	□				
s6	96 #5	7'-7"	□				

FILE DATA
 Type ----- Concrete. See Spec. Prox for Optional Types
 Capacity ----- 32 Tons
 Estimated Length 30 Ft
 No. Regd. ----- 20 (Does not include Test Piles)
 Test Piles ----- 2 (1 each Abut.)

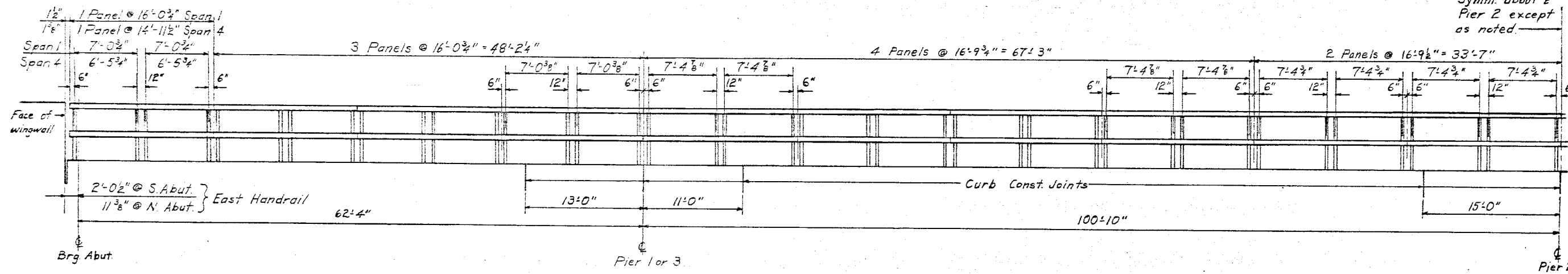
ABUTMENTS
 FAI. RTE 57 SEC. 10-34HB-3
 CHAMPAIGN COUNTY
 STA. 626+66.67



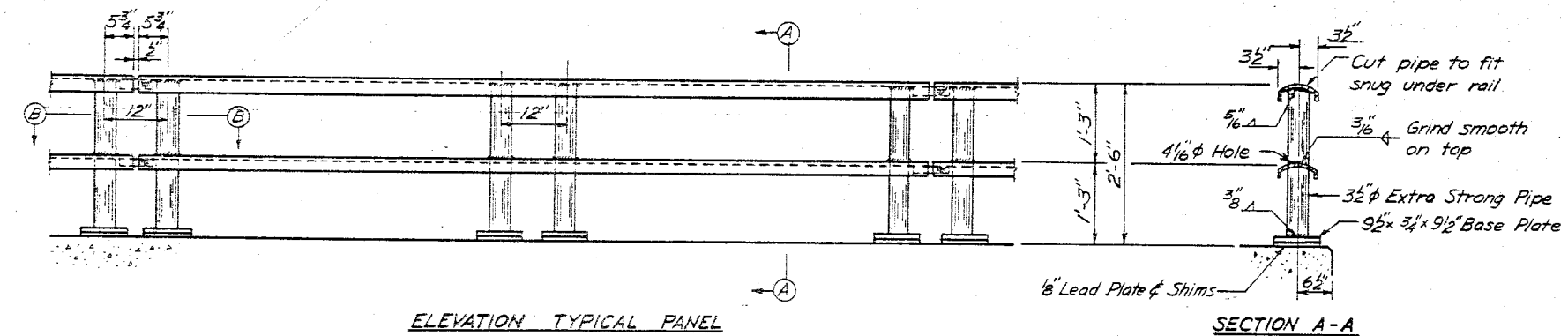
DESIGNED BY DATE CHECKED BY DATE IN CHARGE
 DAS 10/16/61 C. F. W. M. T.

ROUTE NO.	SECTION	COUNTY	SHEET	DATE
FAI 57	10-34HS-3	CHAMPAIGN	22	13
FED. ROAD DIST. NO. 7	ILLINOIS PROJECT			

Symm. about & Pier 2 except as noted.



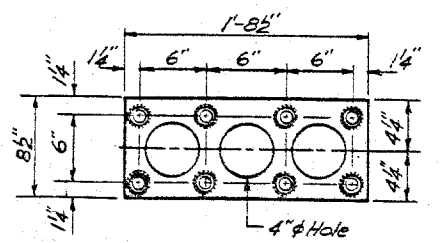
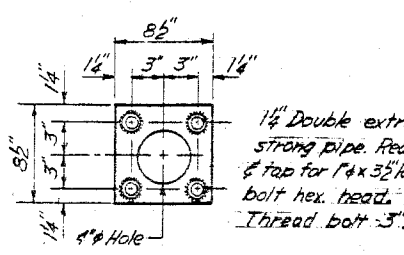
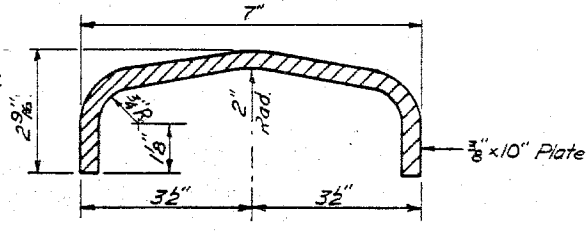
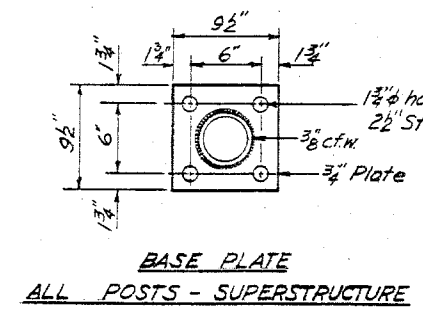
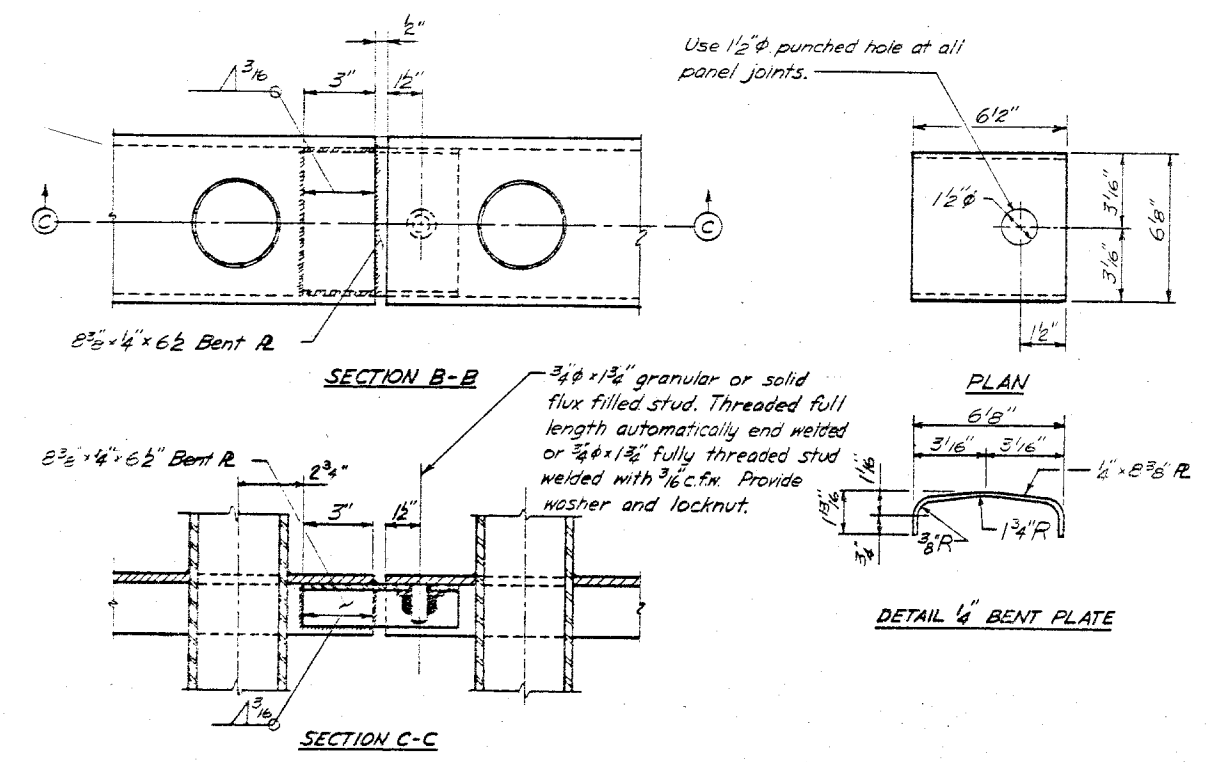
ELEVATION
East Handrail as shown
West Handrail similar but opposite
All dimensions are taken along & Rail



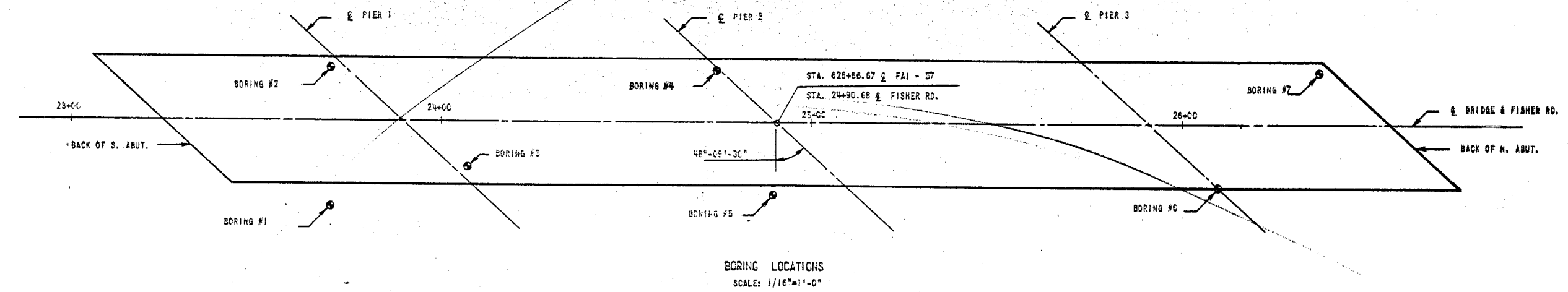
- GENERAL NOTES**
- AFTER ERECTION ALL BOLTS AND WASHERS SHALL BE SPOT PAINTED WITH ONE COAT OF RED LEAD AND TWO COATS OF ALUMINUM PAINT.
 - PROVIDE 1-1/8" AND 2-1/16" SHIMS FOR SOLE OF THE POSTS.

BILL OF MATERIAL

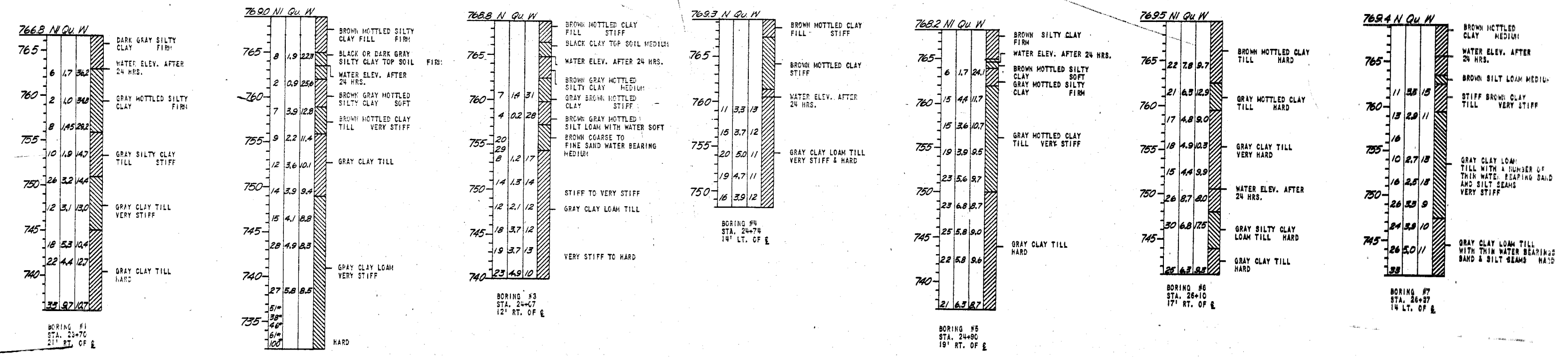
Item	Unit	Quantity
Metal Handrail	l. Ft.	583



HANDRAIL DETAILS
FAI RTE 57 SEC 10-34HS-3
CHAMPAIGN COUNTY
STA. 626+66.67



BORING LOCATIONS
SCALE: 1/16"=1'-0"



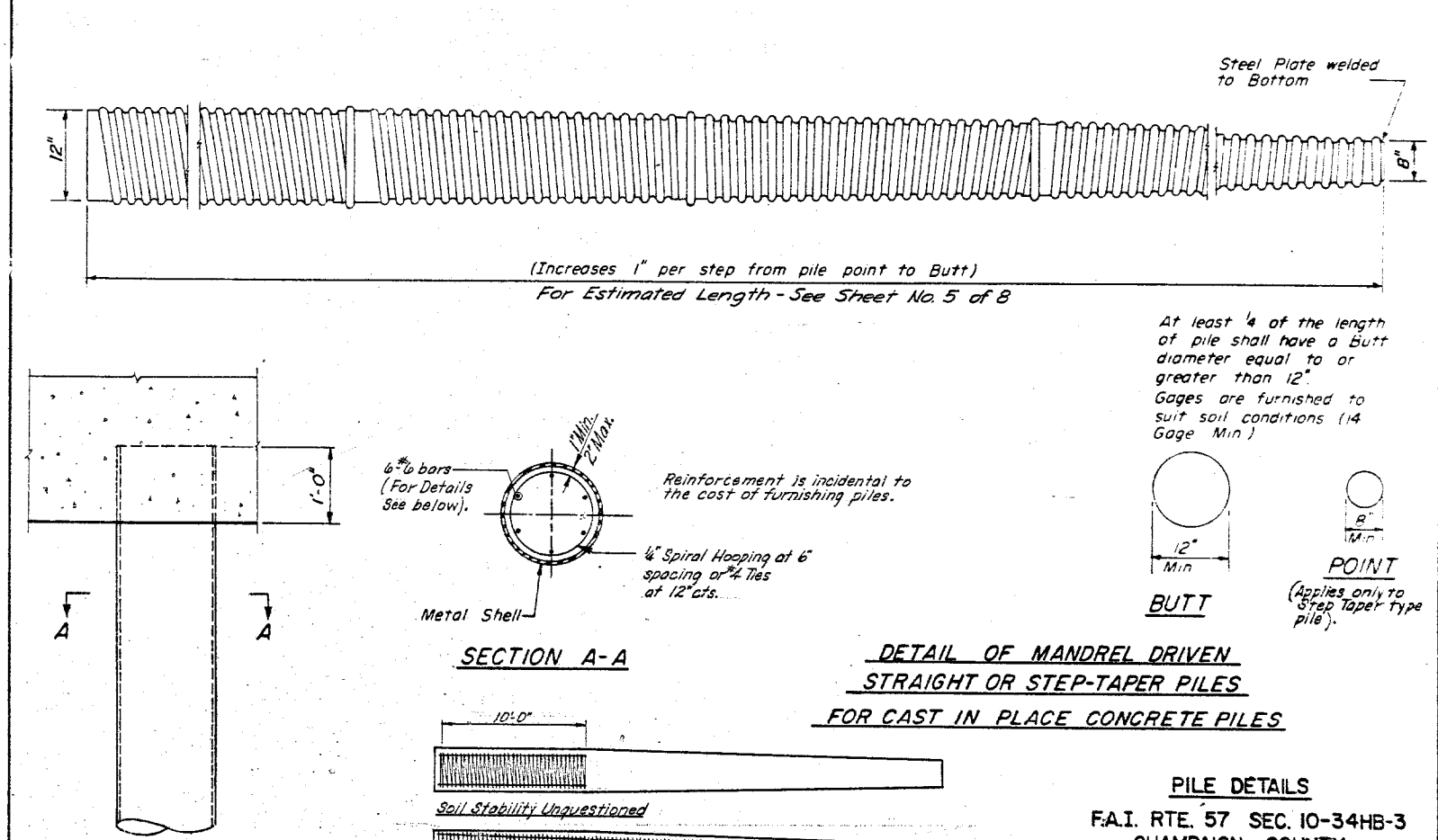
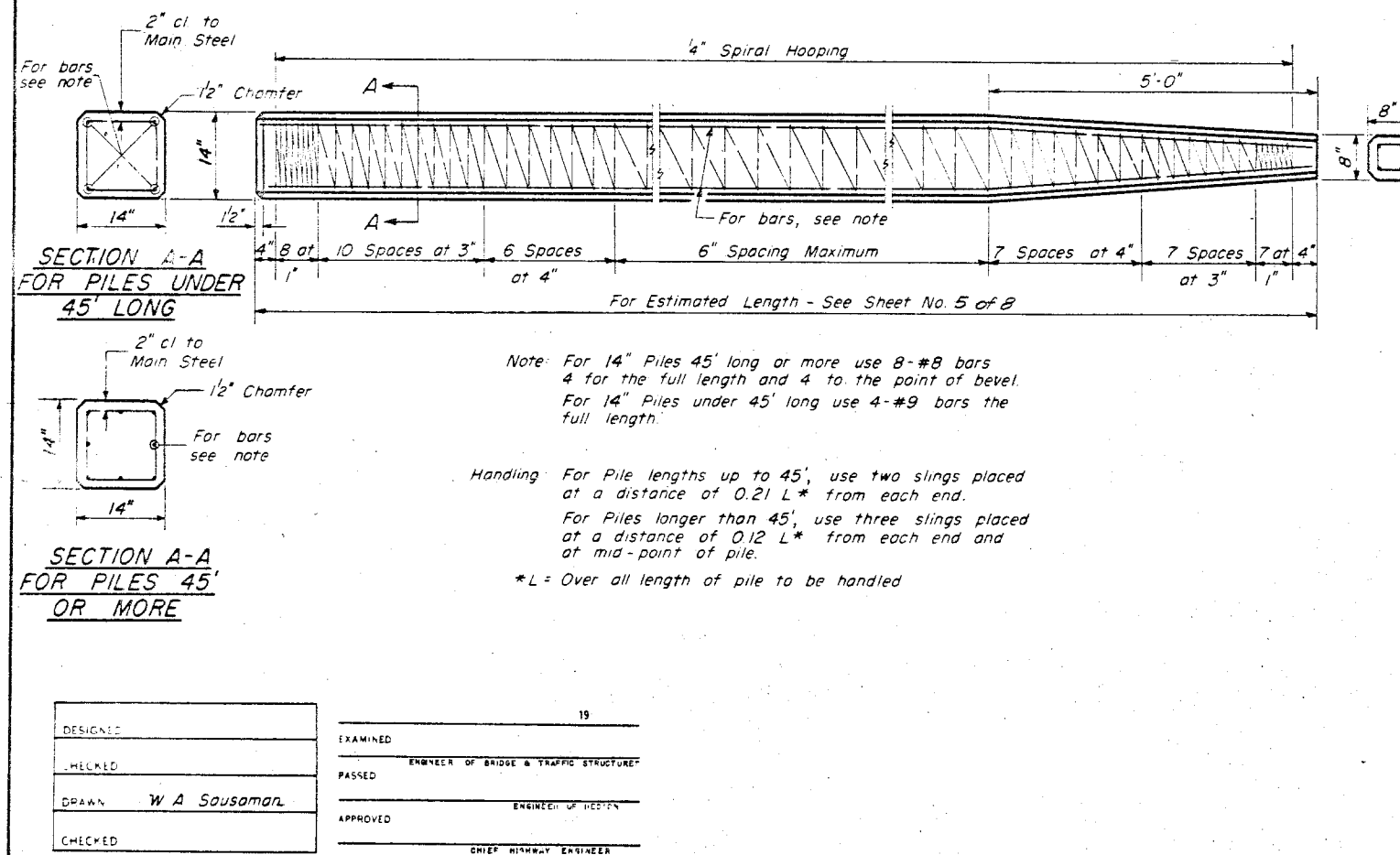
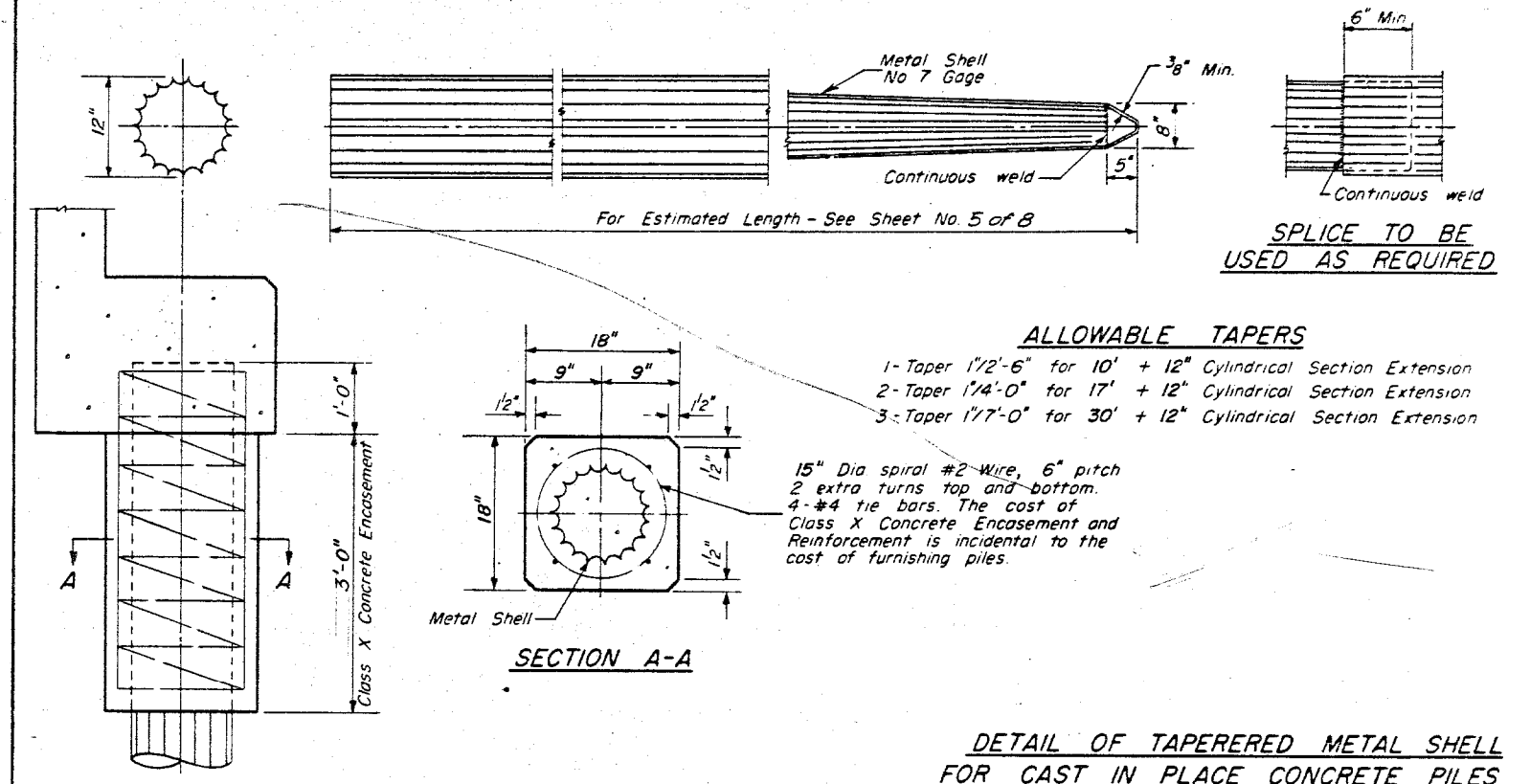
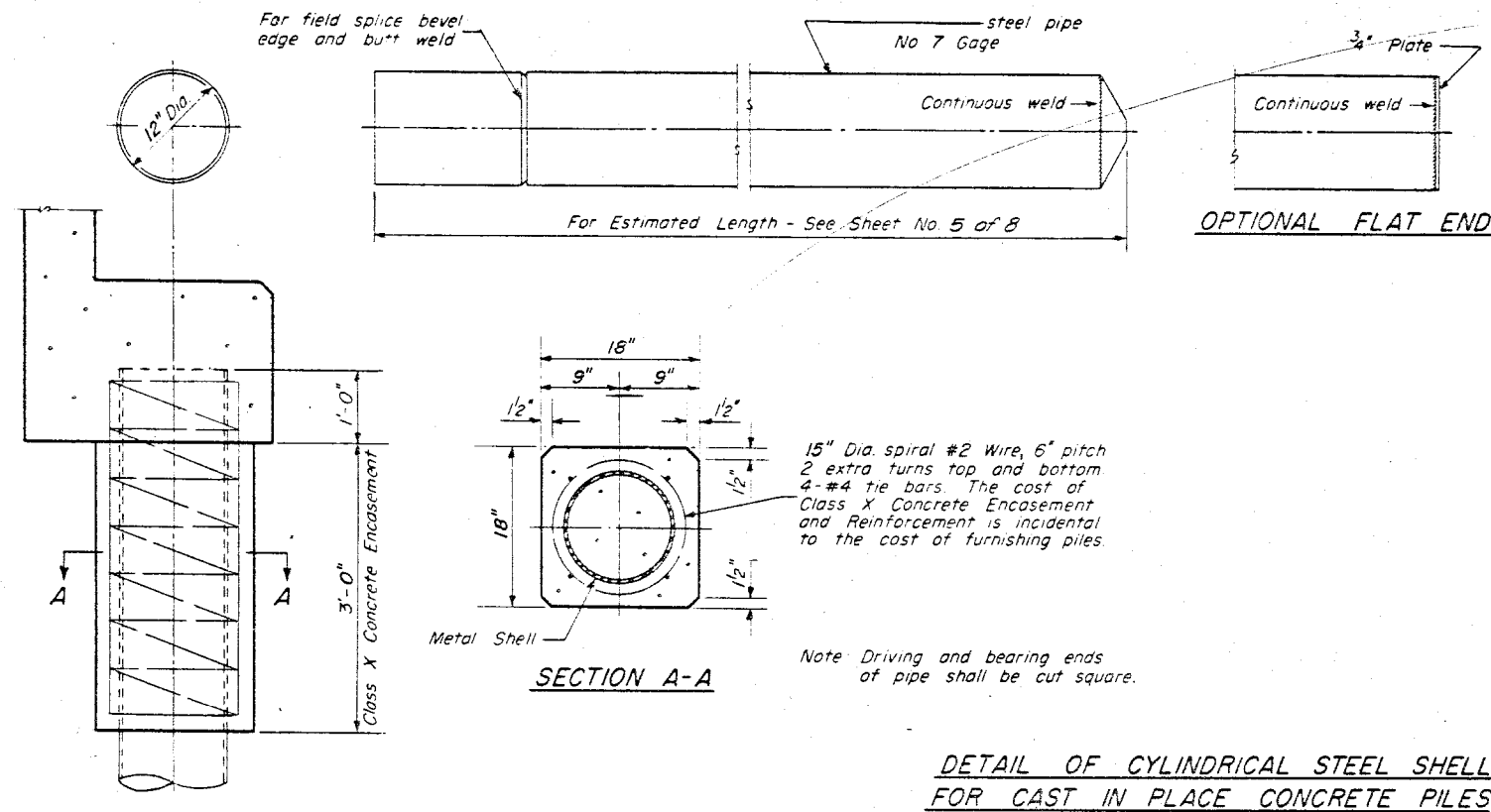
BORING DATA

N = STANDARD PENETRATION TEST-BLOWS PER FOOT TO DRIVE 2" O.D. SPLIT SPOON SAMPLER 12" WITH 140# HAMMER FALLING 36"
 NI = N BUT 170# HAMMER FALLING 24"
 Qu = UNCONFINED COMPRESSIVE STRENGTH IN TONS PER SQUARE FOOT.
 W = PERCENTAGE MOISTURE
 * = BY CONICAL POINT PENETROMETER 2 1/4" & AND 8" IN LENGTH

NOTE BORINGS 1, 2, 5, & 6 BY STATE OF ILLINOIS TAKEN ON OCTOBER 9, 1958
 BORINGS 3, 4 & 7 SUPPLEMENTARY BORINGS BY STATE OF ILLINOIS TAKEN MAY 9, 1962.

BORING DATA
 F.A.I. RTE. 57 SEC. 10-34HB-3
 CHAMPAIGN COUNTY
 STA. 626+66.67

DESIGNED BY: [NAME] CHECKED BY: DATE IN CHARGE: [NAME]
 C.B.P. 7-24-62 C.B.P. 7-24-62 MHT



DESIGNED	19
CHECKED	ENGINEER OF BRIDGE & TRAFFIC STRUCTURE
DRAWN W. A. Sausaman	ENGINEER OF DESIGN
CHECKED	CHIEF HIGHWAY ENGINEER

DETAIL OF PRECAST CONCRETE PILES

PILE DETAILS
F.A.I. RTE. 57 SEC. 10-34HB-3
CHAMPAIGN COUNTY
STA. 626+66.67

X-1 Re-drawn 9-24-59

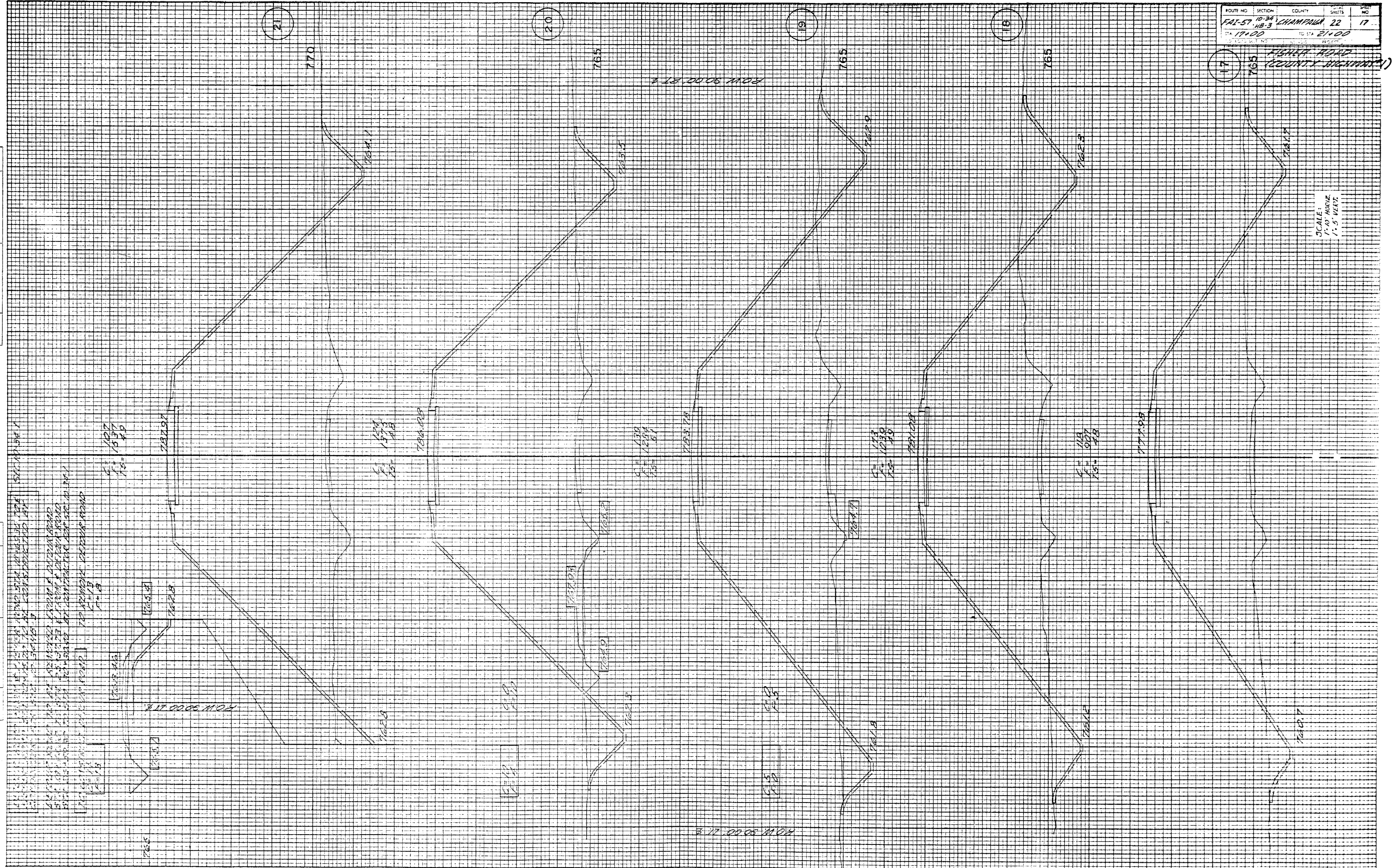
ROUTE NO.	SECTION	COUNTY	SHEETS	SHEET NO.
FAI-57	10-34	CHAMPAIGN	22	17
ST. 17+00	HB-3			
TO STA. 21+00				

FISHER ROAD
CHAMPAIGN COUNTY, ILL.

SCALE:
1" = 40' HORIZ.
1" = 5' VERT.

ORIGINATOR	SURVEY	NOTED	DATE	BY
NO. 1			6-20-88	RIG

NO.	NOTED	DATE	BY

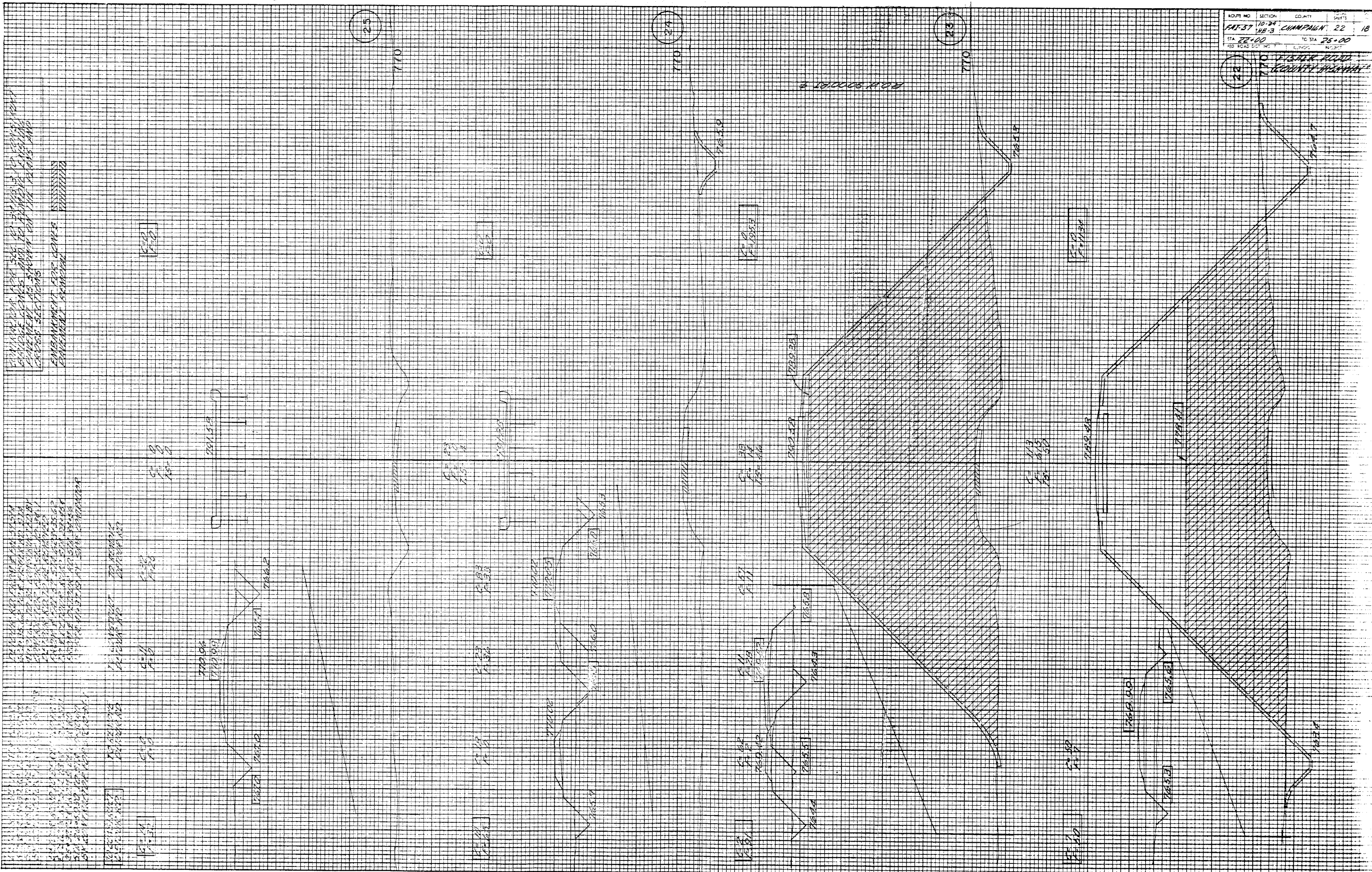


FISHER ROAD CHAMPAIGN COUNTY, ILL.

FINAL SURVEY
 DRAWN BY: [Signature]
 CHECKED BY: [Signature]

ORIGINAL SURVEY
 DATE: 6-27-59
 BY: [Signature]

ROUTE NO. SECTION COUNTY SHEET NO.
 10-34 CHAMPAIGN 22 18
 STA. 22+00 TO STA. 25+00
 15 COUNTY HIGHWAY #1



EMPAVEMENT FOR CENTER
 DITCH

EMPAVEMENT FOR CENTER
 DITCH

FINAL SURVEY PROFILE
 NORTH FROM
 AREAS CHECKED

DATE
 5-20-49
 5-27-49
 7-24-49

BY
 J. G.
 J. G.

DATE

CONSTRUCTION FOR THE
 BRIDGE OVER THE
 FISHERS CREEK
 CROSS SECTION

CONSTRUCTION FOR THE
 BRIDGE OVER THE
 FISHERS CREEK
 CROSS SECTION

CONSTRUCTION FOR THE
 BRIDGE OVER THE
 FISHERS CREEK
 CROSS SECTION

CONSTRUCTION FOR THE
 BRIDGE OVER THE
 FISHERS CREEK
 CROSS SECTION

CONSTRUCTION FOR THE
 BRIDGE OVER THE
 FISHERS CREEK
 CROSS SECTION

CONSTRUCTION FOR THE
 BRIDGE OVER THE
 FISHERS CREEK
 CROSS SECTION

CONSTRUCTION FOR THE
 BRIDGE OVER THE
 FISHERS CREEK
 CROSS SECTION

CONSTRUCTION FOR THE
 BRIDGE OVER THE
 FISHERS CREEK
 CROSS SECTION

CONSTRUCTION FOR THE
 BRIDGE OVER THE
 FISHERS CREEK
 CROSS SECTION

CONSTRUCTION FOR THE
 BRIDGE OVER THE
 FISHERS CREEK
 CROSS SECTION

CONSTRUCTION FOR THE
 BRIDGE OVER THE
 FISHERS CREEK
 CROSS SECTION

CONSTRUCTION FOR THE
 BRIDGE OVER THE
 FISHERS CREEK
 CROSS SECTION

CONSTRUCTION FOR THE
 BRIDGE OVER THE
 FISHERS CREEK
 CROSS SECTION

CONSTRUCTION FOR THE
 BRIDGE OVER THE
 FISHERS CREEK
 CROSS SECTION

CONSTRUCTION FOR THE
 BRIDGE OVER THE
 FISHERS CREEK
 CROSS SECTION

CONSTRUCTION FOR THE
 BRIDGE OVER THE
 FISHERS CREEK
 CROSS SECTION

CONSTRUCTION FOR THE
 BRIDGE OVER THE
 FISHERS CREEK
 CROSS SECTION

CONSTRUCTION FOR THE
 BRIDGE OVER THE
 FISHERS CREEK
 CROSS SECTION

CONSTRUCTION FOR THE
 BRIDGE OVER THE
 FISHERS CREEK
 CROSS SECTION

CONSTRUCTION FOR THE
 BRIDGE OVER THE
 FISHERS CREEK
 CROSS SECTION

CONSTRUCTION FOR THE
 BRIDGE OVER THE
 FISHERS CREEK
 CROSS SECTION

CONSTRUCTION FOR THE
 BRIDGE OVER THE
 FISHERS CREEK
 CROSS SECTION

CONSTRUCTION FOR THE
 BRIDGE OVER THE
 FISHERS CREEK
 CROSS SECTION

ROUTE NO.	SECTION	COUNTY	TOTAL SHEETS	SHEET NO.
1A1-57	10-34	CHAMPAIGN	22	19
STA 26+00	TO STA 29+00			
RD ROAD DIST NO 7	ILLINOIS		PROJECT	

FISHER ROAD
 (COUNTY HIGHWAY #1)