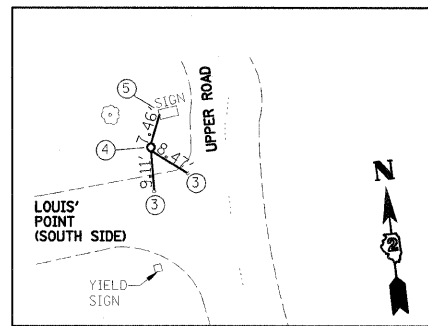
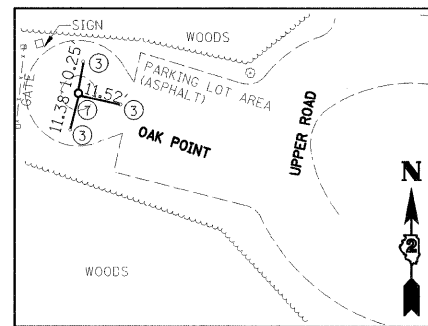


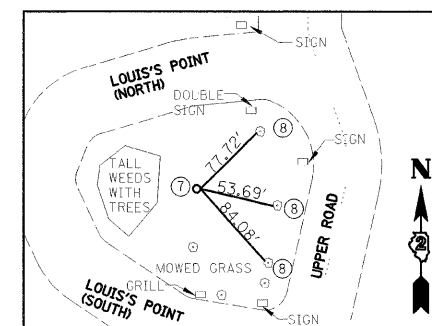
CONTROL PT #10000
(IRON PIPE WITH CAP)
N 1993386.336
E 2297679.965



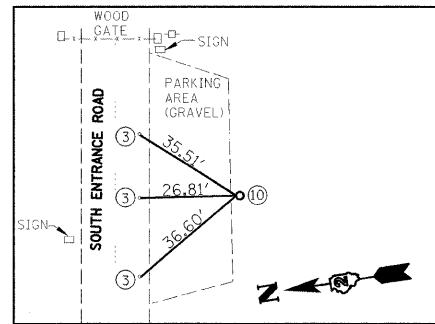
CONTROL PT #10001
(IRON PIPE WITH CAP)
N 1993011.602
E 2297896.402



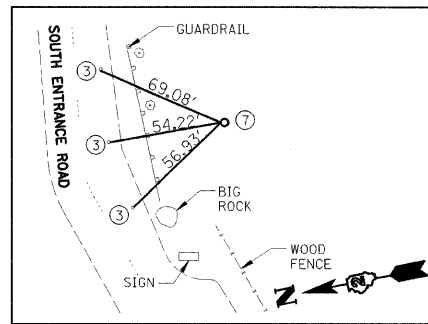
CONTROL PT #GPS 10007
(MAG NAIL)
N 1984549.049
E 2299980.262



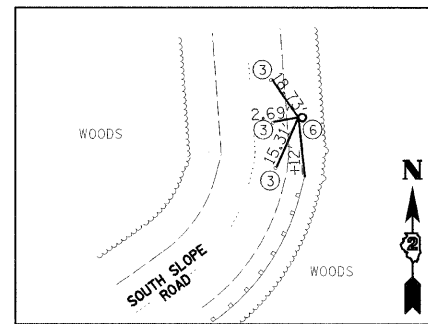
CONTROL PT #GPS 10008
(IRON PIPE WITH CAP)
N 1993179.494
E 2297791.643



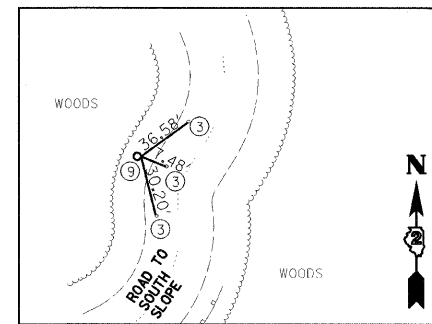
CONTROL PT #GPS 10012
(IRON PIPE WITH CAP)
N 1989040.345
E 2299921.883



CONTROL PT #GPS 10013
(IRON PIPE WITH CAP)
N 1988955.319
E 2299399.830



CONTROL PT #GPS 10017
(IRON PIPE WITH CAP)
N 1989195.085
E 2300725.201



CONTROL PT #5320
(IRON PIPE WITH CAP)
N 1989438.041
E 2300768.776

LEGEND

1. IRON PIPE WITH CAP ± 4' FROM EDGE OF PAVEMENT, FLUSH.
2. MAG NAIL IN WEST SIDE OF EAST SIGN POST ± 1' HIGH.
3. MAG NAIL ± 1' FROM EDGE OF PAVEMENT.
4. IRON PIPE WITH CAP ± 6' FROM EDGE OF PAVEMENT, FLUSH.
5. MAG NAIL IN WEST SIDE OF WEST SIGN POST ± 1' HIGH.
6. IRON PIPE WITH CAP ± 3' FROM EDGE OF PAVEMENT, FLUSH.
7. IRON ROD WITH CAP, FLUSH.
8. MAG NAIL ± 3' HIGH IN 24" DIAMETER TREE.
9. IRON PIPE WITH CAP ± 5' FROM EDGE OF PAVEMENT, FLUSH.
10. IRON PIPE WITH CAP ± 5' FROM EDGE OF PARKING AREA ± 1" DEEP.

LAYOUT COORDINATE SCHEDULE

POINT	NORTHING	EASTING	DESCRIPTION/ REMARKS
10000	1993386.336	2297679.965	IRON PIPE WITH CAP
10001	1993011.602	2297896.402	IRON PIPE WITH CAP
10007	1984549.049	2299980.262	MAG NAIL
10008	1993179.494	2297791.643	IRON PIPE WITH CAP
10012	1989040.345	2299921.883	IRON PIPE WITH CAP
10013	1988955.319	2299399.830	IRON PIPE WITH CAP
10017	1989195.085	2300725.201	IRON PIPE WITH CAP
5320	1989438.041	2300768.776	IRON PIPE WITH CAP

FILE NAME =	USER NAME = #USER#	DESIGNED - PJM	REVISED -	STATE OF ILLINOIS DEPARTMENT OF TRANSPORTATION	SURVEY TIES		F.A. RTE.	SECTION	COUNTY	TOTAL SHEETS	SHEET NO.	
#FILE#		DRAWN - DVH	REVISED -		SCALE:	SHEET NO. 6 OF 16 SHEETS	STA.	TO STA.	PARK ROADS	CARROLL	16	6
		CHECKED - RGD	REVISED -		CONTRACT NO. 44983							
		DATE - 12-4-07	REVISED -		FED. ROAD DIST. NO. ILLINOIS FED. AID PROJECT							