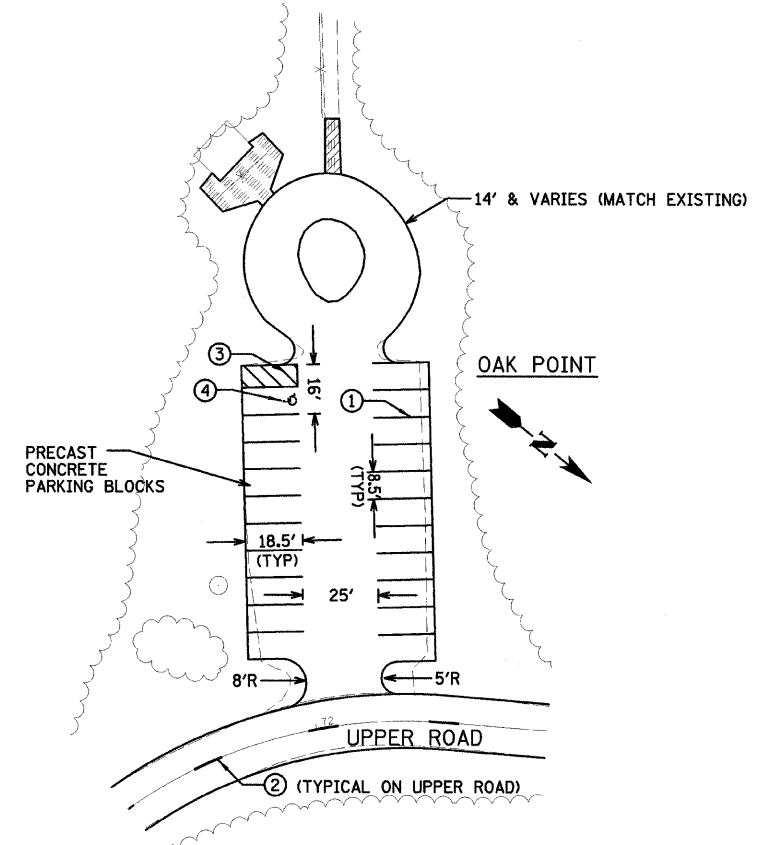
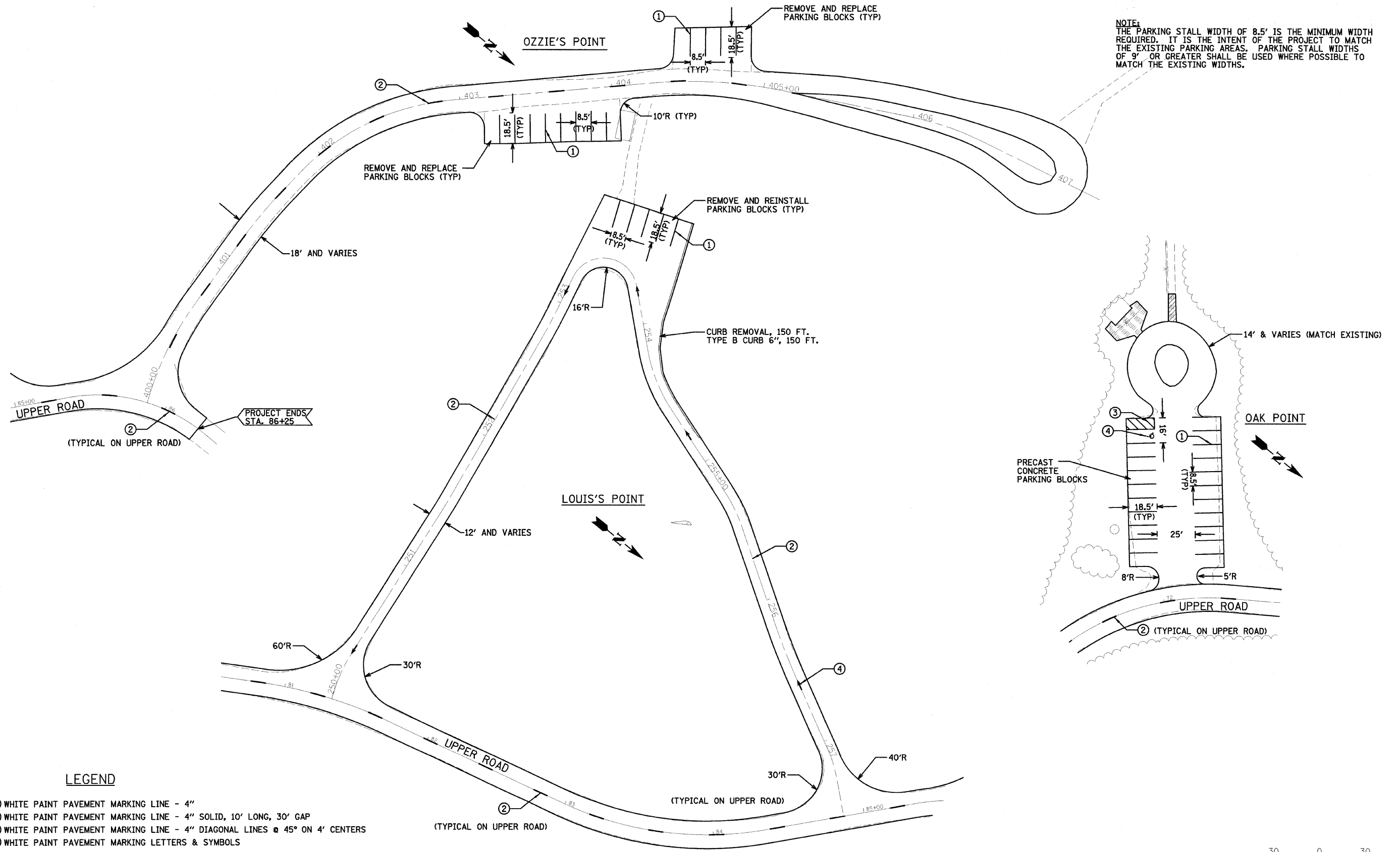
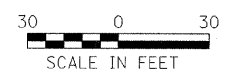


NOTE:
 THE PARKING STALL WIDTH OF 8.5' IS THE MINIMUM WIDTH REQUIRED. IT IS THE INTENT OF THE PROJECT TO MATCH THE EXISTING PARKING AREAS. PARKING STALL WIDTHS OF 9' OR GREATER SHALL BE USED WHERE POSSIBLE TO MATCH THE EXISTING WIDTHS.



LEGEND

- ① WHITE PAINT PAVEMENT MARKING LINE - 4"
- ② WHITE PAINT PAVEMENT MARKING LINE - 4" SOLID, 10' LONG, 30' GAP
- ③ WHITE PAINT PAVEMENT MARKING LINE - 4" DIAGONAL LINES @ 45° ON 4' CENTERS
- ④ WHITE PAINT PAVEMENT MARKING LETTERS & SYMBOLS



FILE NAME =	USER NAME = #USER#	DESIGNED - PJM	REVISED -	STATE OF ILLINOIS DEPARTMENT OF TRANSPORTATION	PAVEMENT MARKING SHEET		F.A. RTE.	SECTION	COUNTY	TOTAL SHEETS	SHEET NO.	
#FILE#		DRAWN - DVH	REVISED -		SCALE:	SHEET NO. 8 OF 16 SHEETS	STA.	TO STA.	PARK ROADS	CARROLL	16	8
		CHECKED - RGD	REVISED -									
		DATE - 12-4-07	REVISED -									
							FED. ROAD DIST. NO.		ILLINOIS FED. AID PROJECT		CONTRACT NO. 44983	