

STATE OF ILLINOIS
DEPARTMENT OF TRANSPORTATION
DIVISION OF HIGHWAYS

IDOT /IDNR STATEWIDE
MISSISSIPPI PALISADES STATE PARK
UPPER ROAD

SECTION MISSISSIPPI PALISADES STATE PK
STATE JOB NO. C-30-008-08
IDNR PROJECT NO. 1-08-001
CARROLL COUNTY

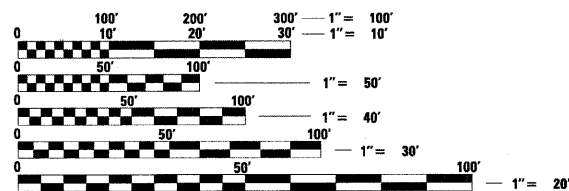
F.A. RTE.	SECTION	COUNTY	TOTAL SHEETS	SHEET NO.
	PARK ROADS	CARROLL	16	1
FED. ROAD DIST. NO.	ILLINOIS	CONTRACT NO. 44983		
IDNR PROJECT #1-08-001				

INDEX OF SHEETS

- 1 COVER SHEET
- 2 SUMMARY OF QUANTITIES
- 3-4 TYPICAL SECTIONS AND DETAILS
- 5 SCHEDULE OF QUANTITIES
- 6 CONTROL TIES
- 7 GENERAL NOTES, LEGEND AND SWPPP PLAN NOTES
- 8 PAVEMENT MARKING SHEET
- 9 LOCATION MAP/TRAFFIC CONTROL PLAN
- 10-11 PLAN SHEETS
- 12-16 DISTRICT DETAILS

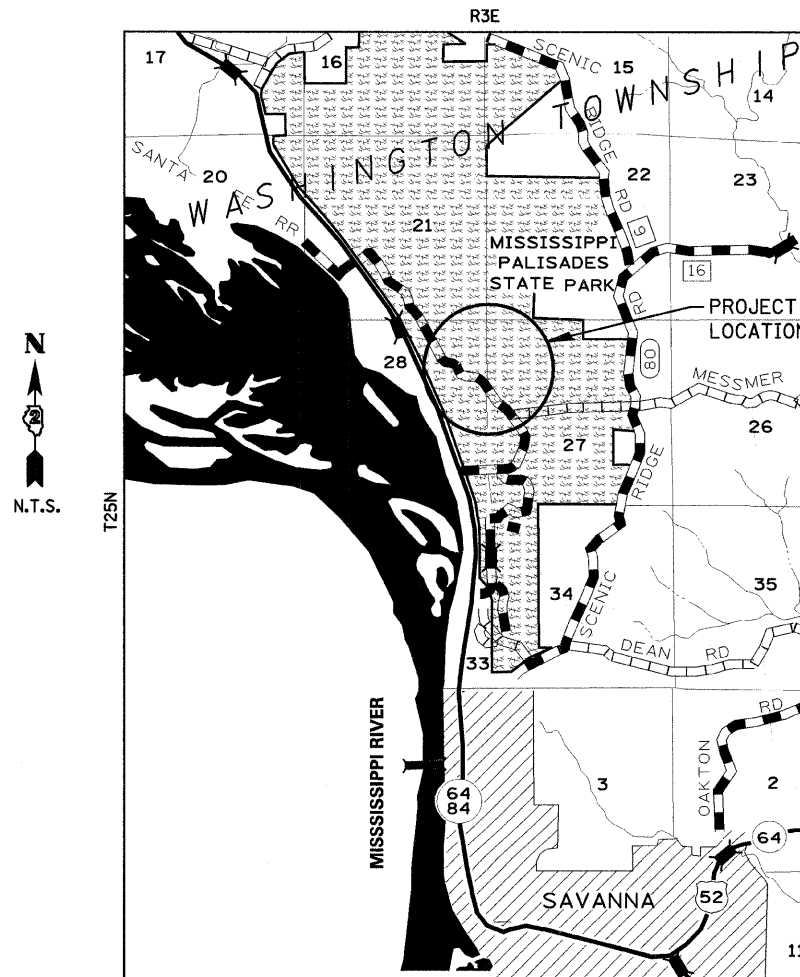
STATE STANDARDS

- 000001-05 STANDARD SYMBOLS, ABBREVIATIONS AND PATTERNS
- 001006 DECIMAL OF AN INCH AND OF A FOOT
- 280001-04 TEMPORARY EROSION CONTROL SYSTEMS
- 424001-05 CURB RAMPS FOR SIDEWALKS
- 606001-03 CONCRETE CURB TYPE B AND COMBINATION CONCRETE CURB AND GUTTER
- 635001 DELINEATORS
- 701901 TRAFFIC CONTROL DEVICES
- 780001-01 TYPICAL PAVEMENT MARKINGS
- BLR-17-3 TRAFFIC CONTROL DEVICES-DAY LABOR CONSTRUCTION
- BLR-21-7 TYPICAL APPLICATION OF TRAFFIC CONTROL DEVICES FOR CONSTRUCTION ON RURAL LOCAL HIGHWAY



FULL SIZE PLANS HAVE BEEN PREPARED USING STANDARD ENGINEERING SCALES. REDUCED SIZED PLANS WILL NOT CONFORM TO STANDARD SCALES. IN MAKING MEASUREMENTS ON REDUCED PLANS, THE ABOVE SCALES MAY BE USED.

J.U.L.I.E.
JOINT UTILITY LOCATION INFORMATION FOR EXCAVATION
1-800-892-0123
OR 811



LOCATION MAP

GROSS LENGTH = 4710' FT. = 0.892 MILES
NET LENGTH = 4710' FT. = 0.892 MILES



Phillip Malone 12/07/07
SIGNATURE

EXPIRATION DATE NOV. 30, 2009

STATE OF ILLINOIS
DEPARTMENT OF TRANSPORTATION
DIVISION OF HIGHWAYS

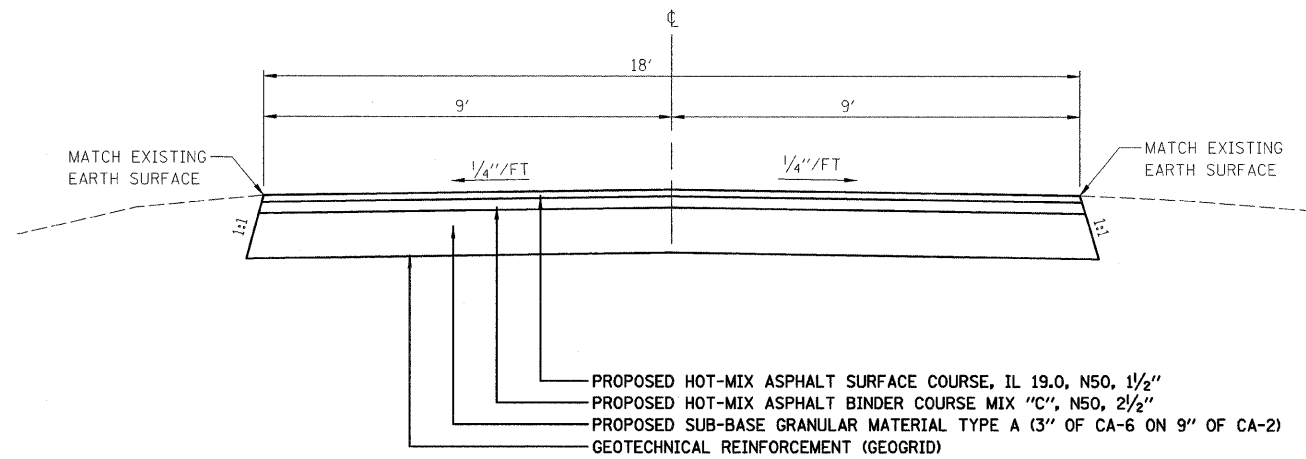
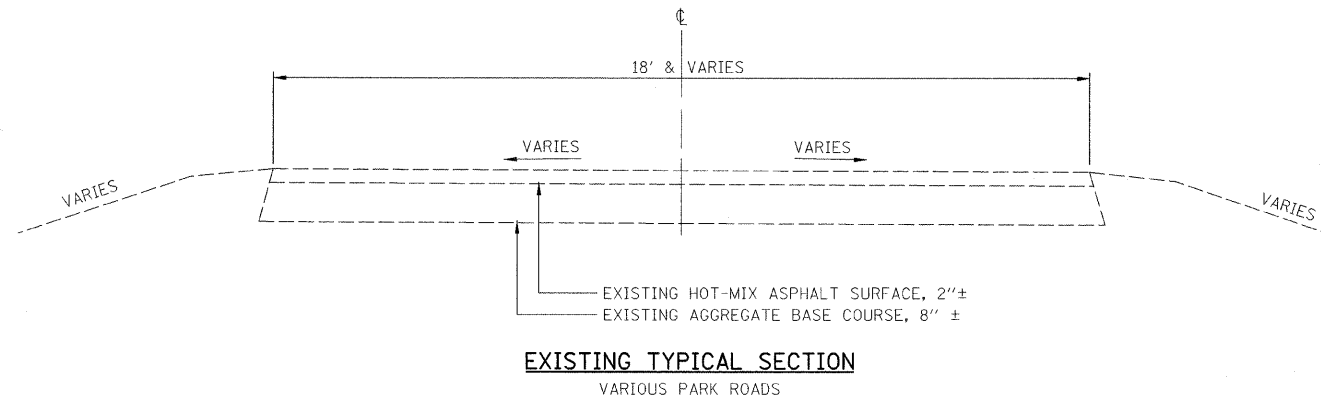
SUBMITTED *January 4, 2008*
Eric E. Harnick
DEPUTY DIRECTOR OF HIGHWAYS

February 1, 2008
Eric E. Harnick
ENGINEER OF DESIGN AND ENVIRONMENT

February 1, 2008
Christine M. Reed
DIRECTOR OF HIGHWAYS, CHIEF ENGINEER

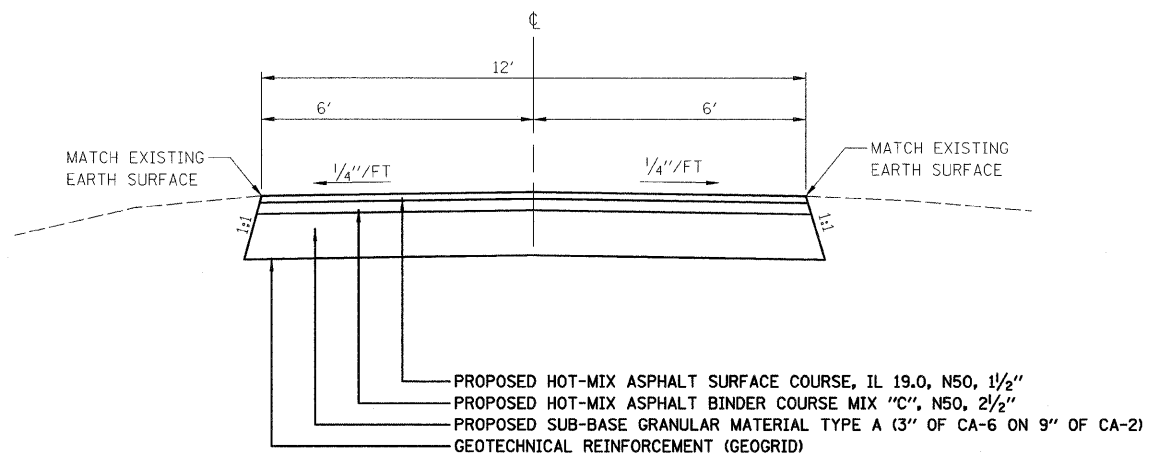
PRINTED BY THE AUTHORITY
OF THE STATE OF ILLINOIS

CONTRACT NO. 44983



PROPOSED TYPICAL SECTION

PARK ROADS
TYPICAL RECONSTRUCTION SECTION
UPPER ROAD STA. 39+15 TO 86+25
OZZIE'S POINT ROAD
OAK POINT PARKING LOT



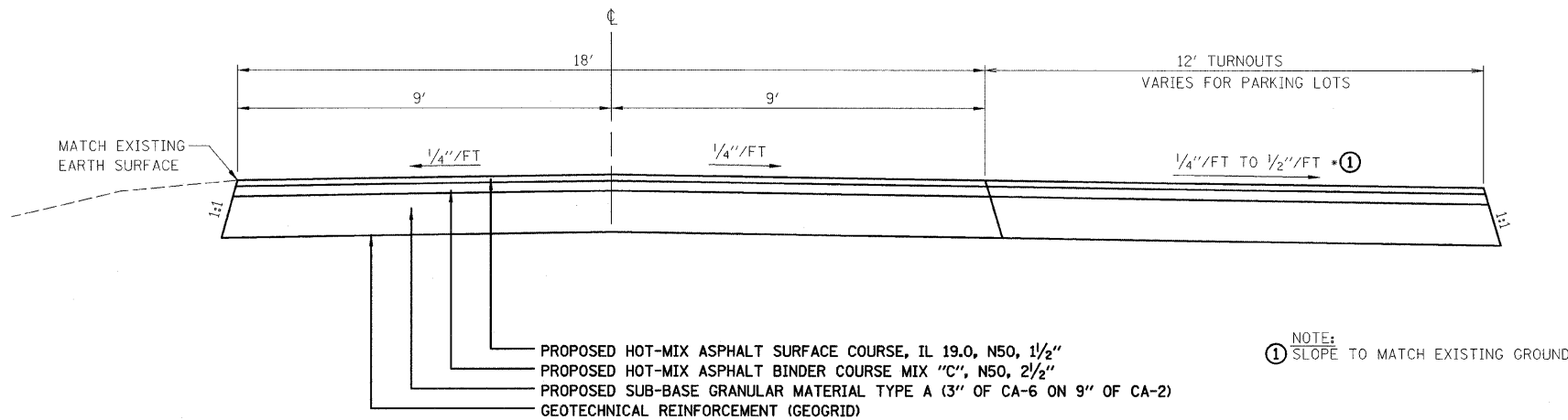
PROPOSED TYPICAL SECTION

PARK ROADS
TYPICAL RECONSTRUCTION SECTION
LOUIS'S POINT ROAD

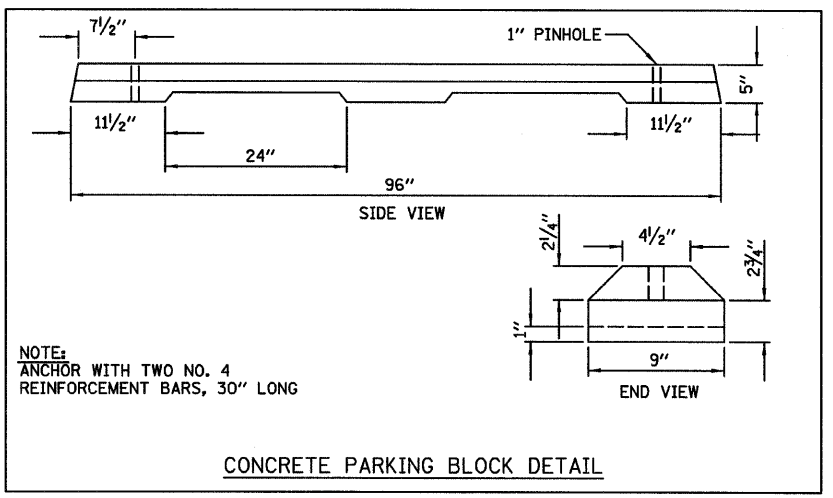
THE FOLLOWING MIXTURE REQUIREMENTS ARE APPLICABLE FOR THIS PROJECT

MIXTURE USE(S):	HOT-MIX ASPHALT SURFACE COURSE	HOT-MIX ASPHALT BINDER COURSE
PG	58-22	58-22
DESIGN AIR VOIDS	3.0% @ N50 DESIGN	3.0% @ N50 DESIGN
MIXTURE COMPOSITION (GRADATION MIXTURE)	IL 9.5 OR IL 12.5	IL 19.0
FRICTION AGGREGATE	MIX C	N/A
TRAFFIC FACTOR	< 0.1	< 0.1

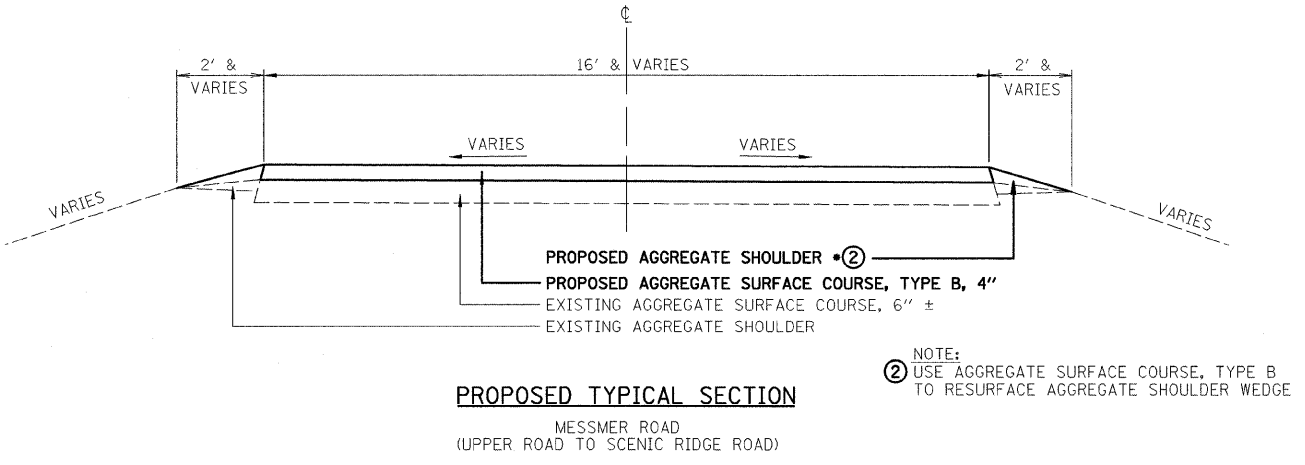
FILE NAME =	USER NAME = #USER#	DESIGNED - PJM	REVISED -	STATE OF ILLINOIS DEPARTMENT OF TRANSPORTATION	TYPICAL SECTIONS	F.A. RTE.	SECTION	COUNTY	TOTAL SHEETS	SHEET NO.
#FILE#		DRAWN - DVH	REVISED -				PARK ROADS	CARROLL	16	3
		CHECKED - RGD	REVISED -						CONTRACT NO. 44983	
		DATE - 12-4-07	REVISED -		SCALE:				SHEET NO. 3 OF 16 SHEETS	STA. TO STA.
								FED. ROAD DIST. NO.	ILLINOIS FED. AID PROJECT	



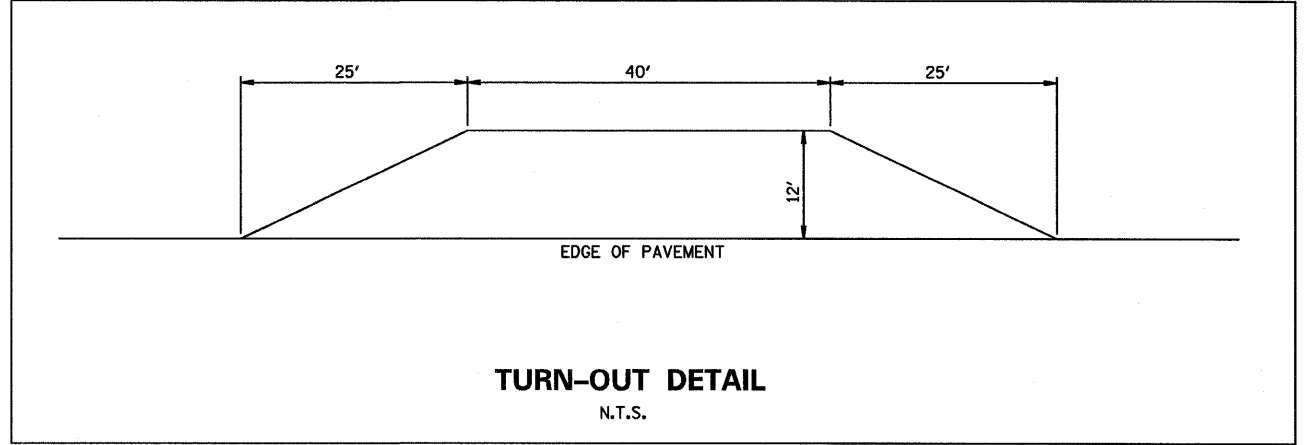
PROPOSED TYPICAL SECTION
TURNOUTS AND PARKING LOTS



CONCRETE PARKING BLOCK DETAIL



PROPOSED TYPICAL SECTION
MESSMER ROAD
(UPPER ROAD TO SCENIC RIDGE ROAD)



TURN-OUT DETAIL
N.T.S.

TYPICAL SECTIONS AND MISCELLANEOUS DETAILS

FILE NAME =	USER NAME = #USER#	DESIGNED - PJM	REVISED -	STATE OF ILLINOIS DEPARTMENT OF TRANSPORTATION	SCALE: SHEET NO. 4 OF 16 SHEETS STA. TO STA.	F.A. RTE.	SECTION	COUNTY	TOTAL SHEETS	SHEET NO.	
#FILE#		DRAWN - DVH	REVISED -				PARK ROADS	CARROLL	16	4	
PLOT SCALE = #SCALE#		CHECKED - RGD	REVISED -			CONTRACT NO. 44983					
PLOT DATE = #DATE#		DATE - 12-4-07	REVISED -			FED. ROAD DIST. NO.	ILLINOIS FED. AID PROJECT				

EARTH EXCAVATION	
LOCATION	CU YD
STA 39+15 TO 86+25	5,308
LOUIS'S POINT	665
OZZIE'S POINT	973
OAK POINT	469
CONTINGENCY	140
TOTAL	7,555

BITUMINOUS MATERIALS (PRIME COAT)	
LOCATION	TON
STA 39+15 TO 86+25	16.2
LOUIS'S POINT	2.3
OZZIE'S POINT	3.4
OAK POINT	1.7
CONTINGENCY	1.4
TOTAL	25

SIDEWALK REMOVAL	
LOCATION	SQ FT
OAK POINT - TRAIL	90
OAK POINT - RESTROOM	360
TOTAL	450

PERIMETER EROSION BARRIER	
LOCATION	FOOT
STA 39+15 TO STA 40+10 LT & RT	230
STA 50+00 TO STA 50+90 RT	100
STA 57+00 TO STA 59+00 LT & RT	400
STA 62+10 TO STA 63+10 LT	115
STA 66+95 TO STA 67+95 RT	115
STA 76+82 TO STA 77+86 RT	115
STA 79+18 TO STA 80+22 RT	115
STA 85+35 TO STA 86+25 LT & RT	190
LOUIS'S POINT	350
OZZIE'S POINT	1,030
OAK POINT	440
CONTINGENCY	200
TOTAL	3,400

HOT-MIX ASPHALT BINDER COURSE, IL-19.0, N50	
LOCATION	TON
STA 39+15 TO 86+25	1,403
LOUIS'S POINT	199
OZZIE'S POINT	296
OAK POINT	145
CONTINGENCY	42
TOTAL	2,085

CONCRETE CURB, TYPE B	
LOCATION	FOOT
LOUIS'S POINT	150
TOTAL	150

PROTECTIVE COAT	
LOCATION	SQ YD
OAK POINT - SIDEWALK	10
OAK POINT - RESTROOM	40
LOUIS'S POINT	60
TOTAL	110

HOT-MIX ASPHALT SURFACE COURSE, MIX "C", N50	
LOCATION	TON
STA 39+15 TO 86+25	828
LOUIS'S POINT	117
OZZIE'S POINT	174
OAK POINT	85
CONTINGENCY	36
TOTAL	1,240

DELINEATORS	
LOCATION	EACH
OZZIE'S POINT	17
OAK POINT	9
TOTAL	26

SUB-BASE GRANULAR MATERIAL, TYPE A	
LOCATION	CU YD
STA 39+15 TO STA 86+75	3,547
LOUIS'S POINT	502
OZZIE'S POINT	747
OAK POINT	365
CONTINGENCY	404
TOTAL	5,565

PORTLAND CEMENT CONCRETE SIDEWALK 5 INCH	
LOCATION	SQ FT
OAK POINT - TRAIL	90
OAK POINT - RESTROOM	360
TOTAL	450

PAVEMENT MARKINGS		
LOCATION	PAINT PAVEMENT MARKING - LINE, 4"	PAINT PAVEMENT MARKING LETTERS AND SYMBOLS
	FOOT	SQ FT
STA 39+15 TO STA 86+25	1,190	
LOUIS'S POINT	110	58
OZZIE'S POINT	380	
OAK POINT	530	5
TOTAL	2,210	63

AGGREGATE SURFACE COURSE, TYPE B	
LOCATION	TON
MESSMER ROAD	1,650
TOTAL	1,650

DETECTABLE WARNINGS	
LOCATION	SQ FT
OAK POINT - TRAIL	8
OAK POINT - RESTROOM	8
TOTAL	16

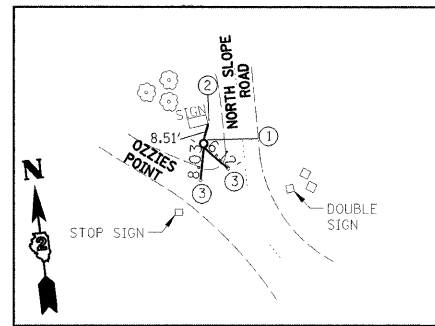
CONCRETE PARKING BLOCKS	
LOCATION	EACH
OAK POINT	21
TOTAL	21

STONE DUMPED RIPRAP, CLASS A4	
LOCATION	SQ YD
LOUIS'S POINT	180
TOTAL	180

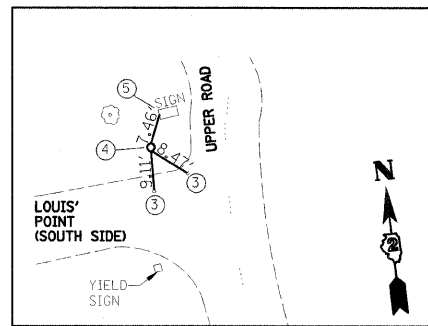
CURB REMOVAL	
LOCATION	FOOT
LOUIS'S POINT	150
TOTAL	150

REMOVE AND REINSTALL PARKING BLOCKS	
LOCATION	EACH
LOUIS'S POINT	6
OZZIE'S POINT	14
TOTAL	20

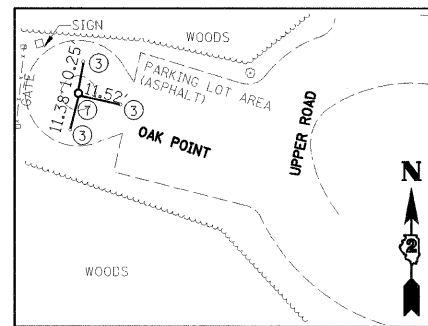
GEOTECHNICAL REINFORCEMENT	
LOCATION	SQ YD
STA 39+15 TO 86+25	11,235
LOUIS'S POINT	1,595
OZZIE'S POINT	2,360
OAK POINT	1,155
TOTAL	16,345



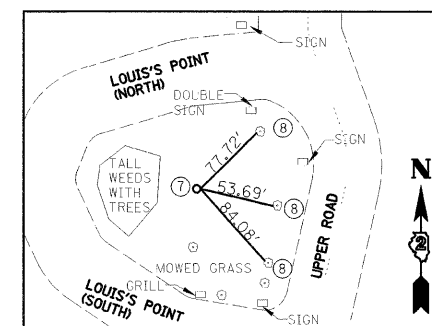
CONTROL PT #10000
(IRON PIPE WITH CAP)
N 1993386.336
E 2297679.965



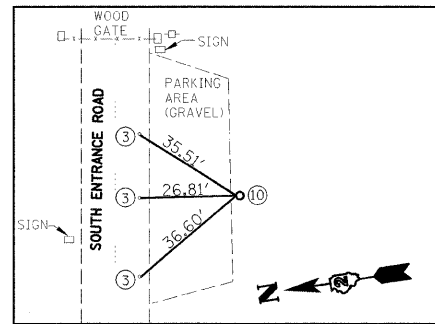
CONTROL PT #10001
(IRON PIPE WITH CAP)
N 1993011.602
E 2297896.402



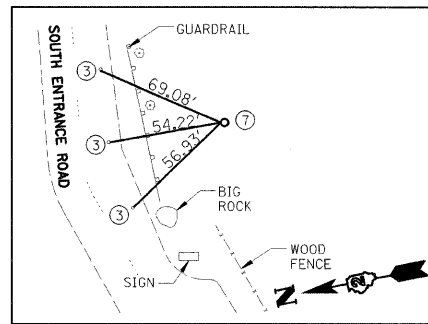
CONTROL PT #GPS 10007
(MAG NAIL)
N 1984549.049
E 2299980.262



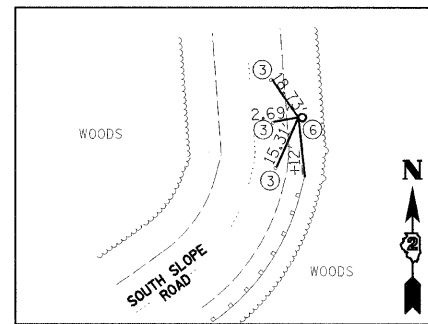
CONTROL PT #GPS 10008
(IRON PIPE WITH CAP)
N 1993179.494
E 2297791.643



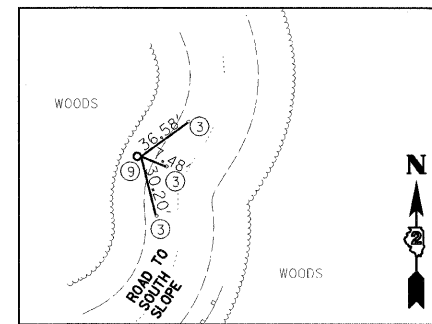
CONTROL PT #GPS 10012
(IRON PIPE WITH CAP)
N 1989040.345
E 2299921.883



CONTROL PT #GPS 10013
(IRON PIPE WITH CAP)
N 1988955.319
E 2299399.830



CONTROL PT #GPS 10017
(IRON PIPE WITH CAP)
N 1989195.085
E 2300725.201



CONTROL PT #5320
(IRON PIPE WITH CAP)
N 1989438.041
E 2300768.776

LEGEND

1. IRON PIPE WITH CAP ± 4' FROM EDGE OF PAVEMENT, FLUSH.
2. MAG NAIL IN WEST SIDE OF EAST SIGN POST ± 1' HIGH.
3. MAG NAIL ± 1' FROM EDGE OF PAVEMENT.
4. IRON PIPE WITH CAP ± 6' FROM EDGE OF PAVEMENT, FLUSH.
5. MAG NAIL IN WEST SIDE OF WEST SIGN POST ± 1' HIGH.
6. IRON PIPE WITH CAP ± 3' FROM EDGE OF PAVEMENT, FLUSH.
7. IRON ROD WITH CAP, FLUSH.
8. MAG NAIL ± 3' HIGH IN 24" DIAMETER TREE.
9. IRON PIPE WITH CAP ± 5' FROM EDGE OF PAVEMENT, FLUSH.
10. IRON PIPE WITH CAP ± 5' FROM EDGE OF PARKING AREA ± 1" DEEP.

LAYOUT COORDINATE SCHEDULE

POINT	NORTHING	EASTING	DESCRIPTION/ REMARKS
10000	1993386.336	2297679.965	IRON PIPE WITH CAP
10001	1993011.602	2297896.402	IRON PIPE WITH CAP
10007	1984549.049	2299980.262	MAG NAIL
10008	1993179.494	2297791.643	IRON PIPE WITH CAP
10012	1989040.345	2299921.883	IRON PIPE WITH CAP
10013	1988955.319	2299399.830	IRON PIPE WITH CAP
10017	1989195.085	2300725.201	IRON PIPE WITH CAP
5320	1989438.041	2300768.776	IRON PIPE WITH CAP

GENERAL NOTES

- 1.) IF SO DIRECTED BY THE ENGINEER, DITCHES ADJACENT TO EMBANKMENTS SHALL BE CONSTRUCTED PRIOR TO STARTING THE CONSTRUCTION OF THE EMBANKMENT FILL.
- 2.) THE ALGEBRAIC DIFFERENCE BETWEEN THE PAVEMENT AND SHOULDER SLOPES SHALL NOT EXCEED 8%. THE SHOULDER ON THE OUTSIDE OF SUPER ELEVATED CURVES SHALL BE FLATTENED ACCORDINGLY.
- 3.) TREES SHALL BE PRESERVED THROUGHOUT THIS SECTION AS SHOWN ON THE PLANS AND AS DIRECTED BY THE ENGINEER. GENERALLY, TREES OUTSIDE THE CLEAR ZONE, AND WHICH DO NOT INTERFERE WITH CONSTRUCTION, SHALL NOT BE DISTURBED.
- 4.) EARTHWORK COMPACTION SHALL BE TO THE SATISFACTION OF THE ENGINEER.
- 5.) FORMS FOR (CONCRETE GUTTER; CONCRETE CURB; COMBINATION CONCRETE CURB AND GUTTER) SHALL BE OF METAL ONLY, EXCEPT THAT WOOD FORMS MAY BE USED ON SHORT RADIUS CURVES.
- 6.) ALL PIPE CULVERTS DESIGNATED ON THE PLANS (R.C.C.P.) SHALL BE "REINFORCED CONCRETE CULVERT, STORM DRAIN AND SEWER PIPE" CONFORMING TO THE REQUIREMENTS OF ARTICLE 1040.03.
- 7.) PROTECTIVE COAT SHALL BE APPLIED TO ALL GUTTER FLAGS, FACE OF CURB, AND MEDIAN SURFACE AS NEEDED ACCORDING TO THE SEASONAL REQUIREMENTS OF ARTICLE 420.21.
- 8.) AT ALL LOCATIONS WHERE THE PROPOSED HOT-MIX ASPHALT OR CONCRETE PAVEMENT JOINS AN EXISTING HOT-MIX ASPHALT OR CONCRETE PAVEMENT, A FULL DEPTH SAW JOINT SHALL BE CONSTRUCTED. THE COST OF THIS JOINT WILL BE INCLUDED IN THE COST OF THE TYPE OF PAVEMENT TO BE CONSTRUCTED.
- 9.) THIS PROJECT INCLUDES SEVERAL AREAS OF ROADWAY WIDENING. NO "WIDENING" PAY ITEMS ARE INCLUDED HEREIN. ALL WORK SHALL BE PAID FOR AS NOTED WHETHER THE WIDTH OF THE WORK AREAS EXCEEDS SIX FEET OR NOT WHETHER IT IS LESS THAN SIX FEET.
- 10.) THE REMOVAL OF BITUMINOUS SURFACING NOT ON A RIGID TYPE BASE REMOVED IN CONJUNCTION WITH THE BASE SHALL BE REMOVED AS EARTH EXCAVATION. THE REMOVAL OF BITUMINOUS SURFACING ON A RIGID TYPE BASE REMOVED IN CONJUNCTION WITH THE BASE SHALL BE INCLUDED IN THE CONTRACT UNIT PRICE FOR PAVEMENT REMOVAL OF THE TYPE SPECIFIED.
- 11.) THE FINAL TOP 100MM (FOUR INCHES) OF SOIL IN ANY RIGHT-OF-WAY AREA DISTURBED BY THE CONTRACTOR MUST BE CAPABLE OF SUPPORTING VEGETATION. THE SOIL MUST BE FROM THE 'A' HORIZON (ZERO TO 2' DEEP) OF SOIL PROFILES OF LOCAL SOILS.
- 12.) THE CONTRACTOR SHALL SEED ALL DISTURBED AREAS WITHIN THE PROJECT LIMITS. THIS WORK WILL BE INCLUDED IN THE CONTRACT UNIT PRICE PER CUBIC METER(CUBIC YARD) FOR EARTH EXCAVATION.

- 13.) (SEEDING LESS THAN 0.5 ACRE OR 0.2 HECTARES) MULCH METHOD II SHALL BE APPLIED OVER ALL SEEDED AREAS. THIS SHALL BE INCLUDED IN THE COST OF THE EARTH EXCAVATION.
- 14.) PREVIOUSLY PUG MILLED STOCKPILES OF "TYPE A" OLDER THAN 1 MONTH WILL NOT BE APPROVED FOR USE UNTIL A MOISTURE CHECK IS RUN TO VERIFY MOISTURE CONTENT. MATERIAL SHIPPED TO PROJECTS WITHOUT BEING TESTED WILL NOT BE ACCEPTED.
- 15.) EXCEPT FOR THE TOP 75mm (3"), ALL AGGREGATE BASES AND SUBBASES 300mm (12") IN THICKNESS SHALL BE CONSTRUCTED OF AGGREGATE GRADATION CA-2. IF THE SPECIFIED THICKNESS EXCEEDS 300mm (12"), THE BASES OR SUBBASES SHALL BE CONSTRUCTED OF TOPSIZE 150mm (6") BREAKER-RUN CRUSHED STONE WITH 70% TO 90% BY WEIGHT, PASSING THE 4" SIEVE AND 15% TO 40% BY, PASSING THE 50mm (2") SIZE SIEVE, EXCEPT FOR THE TOP 75mm (3"). THE BREAKER-RUN CRUSHED STONE SHALL BE REASONABLY UNIFORMLY GRADED FROM COARSE TO FINE AND BE TAKEN FROM A QUARRY LEDGE CAPABLE OF PRODUCING CLASS "D" QUALITY AGGREGATE. THE TOP 75mm (3") SHALL BE GRADATION CA-6 OR CA-10 REGARDLESS OF THICKNESS. THE WATER NECESSARY TO ACHIEVE COMPACTION IN ALL BUT THE TOP 75mm (3") LAYER MAY BE ADDED AFTER THE SUBBASE OR BASE COURSE IS PLACED ON THE GRADE.
- 16.) DELINEATORS SHALL BE INSTALLED AS SHOWN IN STANDARD 635001, EXCEPT THAT THE POST SHALL BE ROTATED 180° AND ONLY METAL-BACKED DELINEATORS SHALL BE PERMITTED.
- 17.) THE CONTRACTOR SHALL BE RESPONSIBLE FOR PROTECTION UTILITY PROPERTY DURING CONSTRUCTION OPERATIONS AS OUTLINED IN ARTICLE 107.31 OF THE STANDARD SPECIFICATIONS. A MINIMUM OF 48 HOURS ADVANCE NOTICE IS REQUIRED FOR NON-EMERGENCY WORK. THE JULIE NUMBER IS 800-892-0123. THE FOLLOWING LISTED UTILITIES LOCATED WITHIN THE PROJECT LIMITS OR IMMEDIATELY ADJACENT TO THE PROJECT CONSTRUCTION LIMITS ARE MEMBERS OF JULIE:
JO-CARROLL ENERGY (ELECTRIC) MISSISSIPPI PALISADES PARK (SANITARY SEWER)
MISSISSIPPI PALISADES PARK (WATER MAIN)
 FOLLOWING ARE THE KNOWN UTILITIES LOCATED WITHIN THE PROJECT LIMITS OR IMMEDIATELY ADJACENT TO THE PROJECT CONSTRUCTION LIMITS WHICH ARE NOT MEMBERS OF JULIE AND SHOULD BE NOTIFIED INDIVIDUALLY BY THE CONTRACTOR:
 18.) THE CONTRACTOR IS ADVISED THAT NO HARD SURVEY DATA WAS OBTAINED FOR THIS PROJECT. ALL INFORMATION WAS EXTRACTED FROM AERIAL SURVEY DATA. TO INSURE THAT THE ROADWAY IS RECONSTRUCTED IN ITS EXISTING LOCATION AND AT THE SAME ELEVATION, THE CONTRACTOR SHALL OBTAIN CENTERLINE ELEVATIONS AT A MINIMUM OF ONE HUNDRED FOOT INTERVALS AND SHALL SET OFFSET HUBS AT THE SAME ONE HUNDRED FOOT INTERVALS TO REESTABLISH THE ROADWAY ALIGNMENT AND PROFILE. THIS WORK SHALL BE INCLUDED IN THE LUMP SUM PRICE BID FOR CONSTRUCTION LAYOUT. IF, IN THE OPINION OF THE RESIDENT ENGINEER, ADDITIONAL OFFSET HUBS AND ELEVATIONS ARE NECESSARY TO REESTABLISH THE ROADWAY, THE CONTRACTOR SHALL OBTAIN/SET THESE HUBS AT NO ADDITIONAL COST.

LEGEND

PROPOSED

- PCC SIDEWALK- 5"
- SIDEWALK REMOVAL
- TRENCH BACKFILL
- PERIMETER EROSION BARRIER

EXISTING

- SIGN
- MANHOLE
- CONTOUR
- TIMBER LINE
- PIPE CULVERT (VARIOUS SIZES)
- IRON ROD
- BENCHMARK
- SIGN
- STREET LIGHT
- GUY WIRE
- POWER POLE
- YARD HYDRANT
- UNDERGROUND ELECTRIC
- OVERHEAD UTILITIES
- STORM SEWER
- EVERGREEN TREE
- DECIDUOUS TREE

STORM WATER POLLUTION PREVENTION PLAN EROSION CONTROL PLAN

THE FOLLOWING PLAN WAS ESTABLISHED AND INCLUDED IN THESE PLANS TO DIRECT THE CONTRACTOR IN THE PLACEMENT OF TEMPORARY EROSION CONTROL SYSTEMS AND TO PROVIDE A STORM WATER POLLUTION PREVENTION PLAN FOR COMPLIANCE UNDER NPDES.

THE PURPOSE OF THIS PLAN IS TO MINIMIZE SILTATION WITHIN THE CONSTRUCTION ZONE AND TO ELIMINATE SEDIMENTS FROM ENTERING AND LEAVING THE CONSTRUCTION ZONE BY UTILIZING PROPER TEMPORARY EROSION CONTROL SYSTEMS AND PROVIDING GROUND COVER WITHIN A REASONABLE AMOUNT OF TIME.

CERTAIN ITEMS, AS SHOWN IN THIS PLAN AND REFERENCED BY THE LEGEND, SHALL BE PLACED BY THE CONTRACTOR AT THE BEGINNING OF CONSTRUCTION. OTHER ITEMS SHALL BE PLACED BY THE CONTRACTOR AS DIRECTED BY THE ENGINEER ON A CASE BY CASE SITUATION RESULTING FROM THE CONTRACTOR'S SEQUENCE OF ACTIVITIES, TIME OF YEAR, AND EXPECTED WEATHER CONDITIONS.

THE CONTRACTOR SHALL PLACE PERMANENT EROSION CONTROL SYSTEMS AND SEEDING WITHIN A REASONABLE AMOUNT OF TIME; THEREFORE, REDUCING THE AMOUNT OF AREA BEING OPEN TO THE POSSIBILITY OF EROSION AND REDUCING THE AMOUNT OF TEMPORARY SEEDING. THE RESIDENT ENGINEER WILL DETERMINE IF TEMPORARY EROSION CONTROL SYSTEMS SHOWN IN THE PLAN CAN BE DELETED, THE SIZE OF THE PROPOSED DITCH CHECKS, THE PROPER METHOD OF INSTALLATION, AND IF ANY ADDITIONAL TEMPORARY EROSION CONTROL SYSTEMS SHALL BE ADDED WHICH ARE NOT INCLUDED IN THE PLANS. THE CONTRACTOR SHALL PERFORM ALL WORK AS DIRECTED BY THE ENGINEER AND AS SHOWN IN STANDARD 280001 OF THE PLANS.

SITE DESCRIPTION

DESCRIPTION OF CONSTRUCTION ACTIVITY:

THIS PROJECT CONSISTS OF REMOVAL AND RECONSTRUCTION OF THE EXISTING UPPER ROAD AND PARKING AREAS

DESCRIPTION OF INTENDED SEQUENCE OF ACTIVITIES:

THE SEQUENCE OF EVENTS ARE AS FOLLOWS: CLEARING, EMBANKMENT, EXCAVATION, GRADING AND PAVING. THIS PROJECT WILL BE CONSTRUCTED IN SEGMENTS AS SHOWN IN THE "STAGING PLANS".

TOTAL CONSTRUCTION SITE (CONSTRUCTION LIMIT TO CONSTRUCTION LIMIT) 5.3 ACRES

PROPOSED R.O.W (TOTAL PARCEL AREA) N/A ACRES

DISTURBED BY EXCAVATION (E.O.P TO CONSTRUCTION LIMIT) 3.1 ACRES

SUPPORTING REPORTS AND PLANS

THE FOLLOWING ASSISTED IN DEVELOPING THE EROSION CONTROL PLAN AS REFERENCED DOCUMENTS:

USGS DRAINAGE MAPS, PROJECT PLAN DOCUMENTS

DRAINAGE TRIBUTARIES RECEIVING WATER FROM CONSTRUCTION SITE

MISSISSIPPI RIVER

EROSION CONTROLS AND SEDIMENT CONTROL PROCEDURES

STABILIZATION PRACTICES AT THE BEGINNING OF CONSTRUCTION:
 PERIMETER EROSION CONTROL SHALL BE PLACED PRIOR TO BEGINNING EARTHWORK.

STABILIZATION PRACTICES DURING CONSTRUCTION:

AS EARTH EXCAVATION AND EMBANKMENT ARE BEING COMPLETED THE CONTRACTOR SHALL PLACE DITCH CHECKS, INLET AND PIPE PROTECTION, EROSION CONTROL BLANKET, AND SEEDING AS STAGES OF THE PROJECT ARE COMPLETED. PERIMETER EROSION BARRIER WILL BE INSTALLED AT ADDITIONAL LOCATIONS AS THE PROJECT PROGRESSES. SEEDING SHALL BE COMPLETED AS SPECIFIED IN THE EROSION CONTROL/ SEEDING MOBILIZATION AND TEMPORARY SEEDING SPECIAL PROVISION.

MAINTENANCE AFTER FINAL GRADING

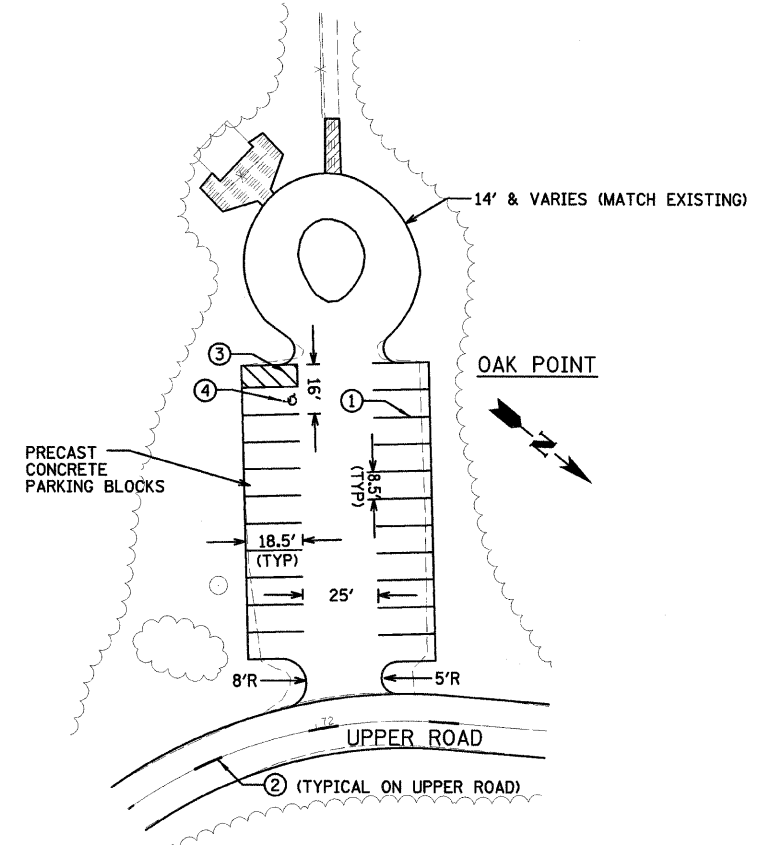
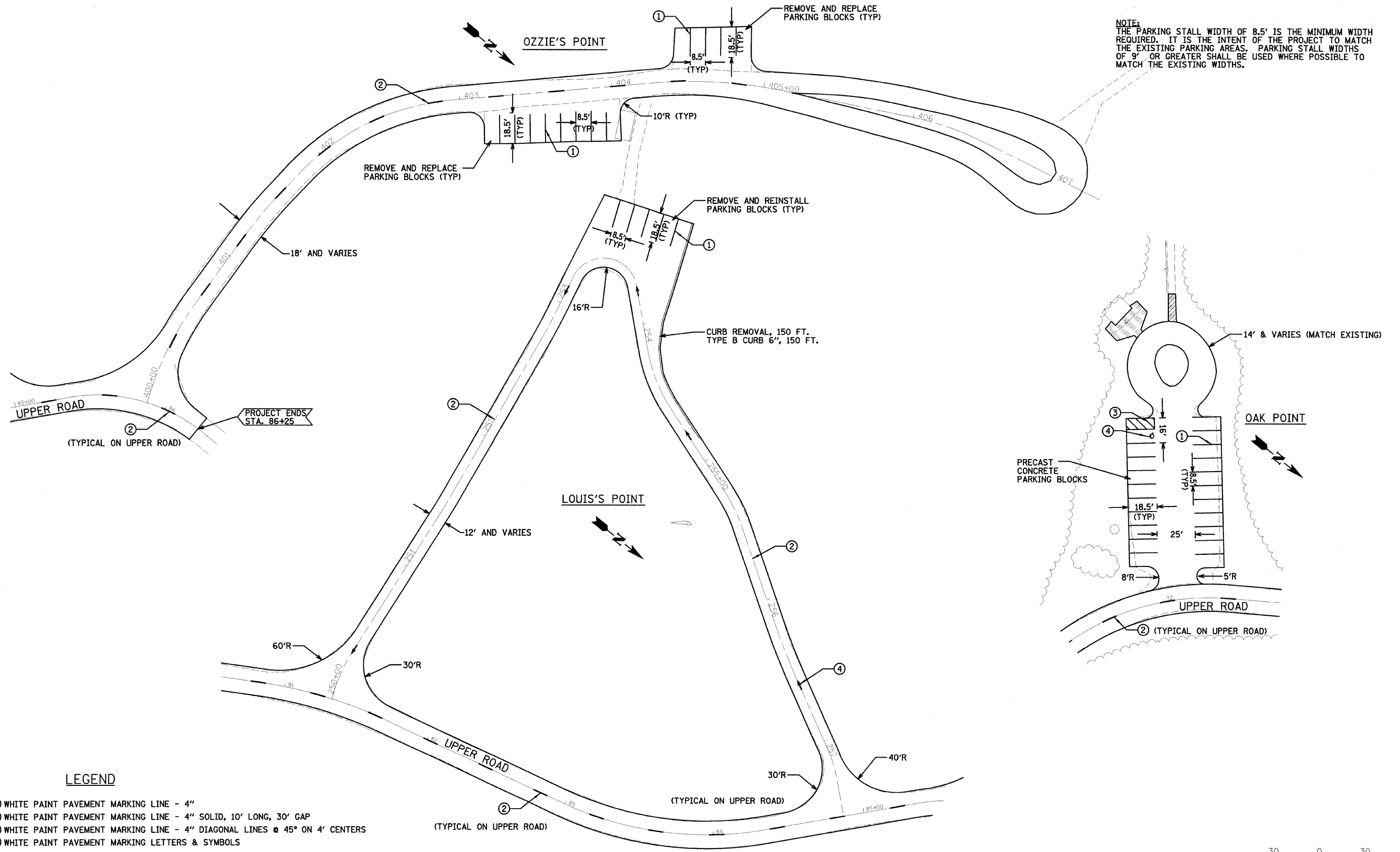
TEMPORARY EROSION CONTROL SYSTEMS SHALL BE LEFT IN PLACE WITH PROPER MAINTENANCE UNTIL PERMANENT EROSION CONTROL IS IN PLACE AND WORKING PROPERLY AND ALL PROPOSED TURF AREAS SEEDED AND ESTABLISHED WITH THE PROPER STAND. ONCE PERMANENT EROSION CONTROL SYSTEMS AS PROPOSED IN THE PLANS ARE FUNCTIONAL AND ESTABLISHED, TEMPORARY ITEMS SHALL BE REMOVED, CLEANED UP AND DISTURBED TURF RESEDED.

APPLICATION RATES

GRANULAR MATERIALS	2.05 TONS/CY
BITUMINOUS MATERIAL (PRIME COAT)	0.4 GAL/SQ YD OR 0.0016 TON/SY ON AGGREGATE (MC-30)
BITUMINOUS MATERIAL (PRIME COAT)	0.1 GAL/SQ YD OR 0.0004 TON/SY ON HARD SURFACE (RC-70)
HOT-MIX ASPHALT	112*/IN/SQ YD
NITROGEN FERTILIZER NUTRIENT	90 LB/ACRE
PHOSPHORUS FERTILIZER NUTRIENT	90 LB/ACRE
POTASSIUM FERTILIZER NUTRIENT	90 LB/ACRE
MULCH METHOD 2	2 TONS/ACRE

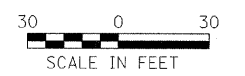
FILE NAME =	USER NAME = #USER#	DESIGNED - PJM	REVISED -	STATE OF ILLINOIS DEPARTMENT OF TRANSPORTATION	GENERAL NOTES, LEGEND AND SWPPP PLAN NOTES			F.A. RTE.	SECTION	COUNTY	TOTAL SHEETS	SHEET NO.
#FILE#		DRAWN - DVH	REVISED -						PARK ROADS	CARROLL	16	7
	PLOT SCALE = #SCALE#	CHECKED - RGD	REVISED -		SCALE: SHEET NO. 7 OF 16 SHEETS STA. TO STA.			CONTRACT NO. 44983				
	PLOT DATE = #DATE#	DATE - 12-4-07	REVISED -		FED. ROAD DIST. NO. ILLINOIS FED. AID PROJECT							

NOTE:
 THE PARKING STALL WIDTH OF 8.5' IS THE MINIMUM WIDTH REQUIRED. IT IS THE INTENT OF THE PROJECT TO MATCH THE EXISTING PARKING AREAS. PARKING STALL WIDTHS OF 9' OR GREATER SHALL BE USED WHERE POSSIBLE TO MATCH THE EXISTING WIDTHS.

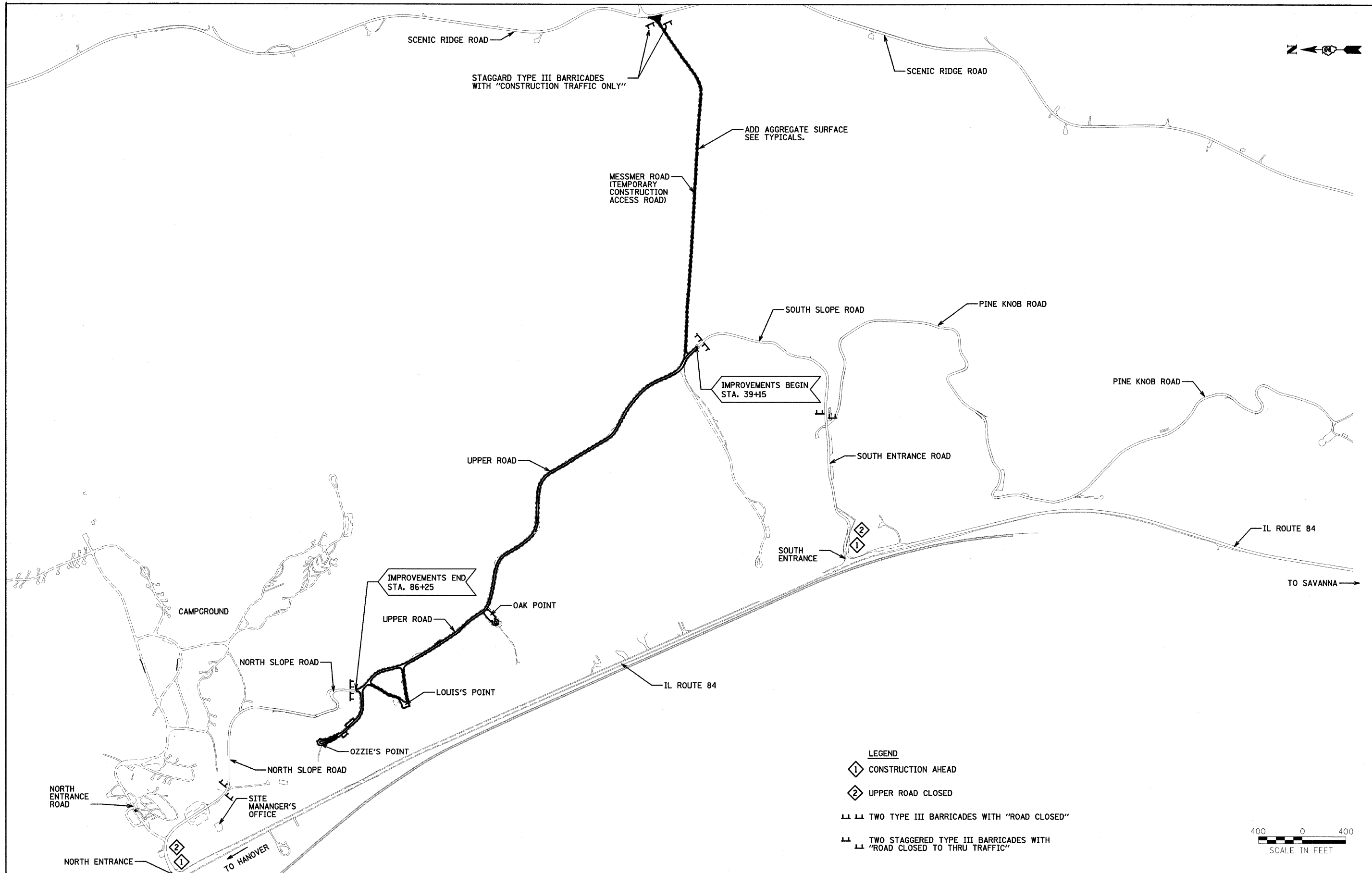


LEGEND

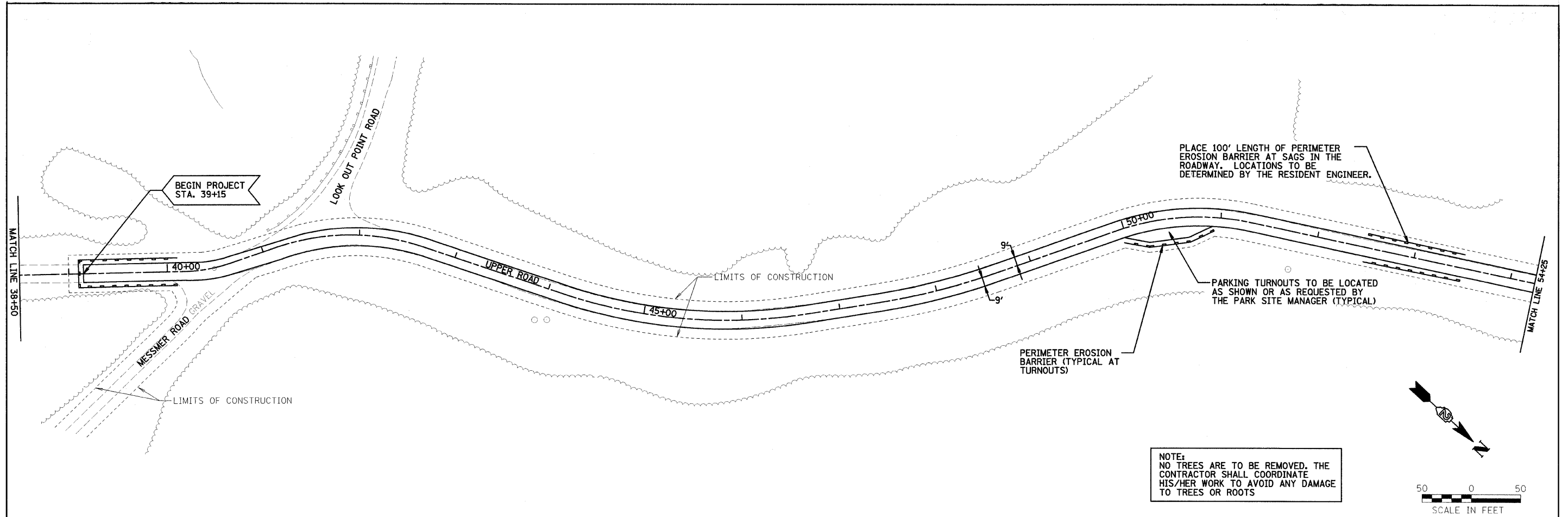
- ① WHITE PAINT PAVEMENT MARKING LINE - 4"
- ② WHITE PAINT PAVEMENT MARKING LINE - 4" SOLID, 10' LONG, 30' GAP
- ③ WHITE PAINT PAVEMENT MARKING LINE - 4" DIAGONAL LINES @ 45° ON 4' CENTERS
- ④ WHITE PAINT PAVEMENT MARKING LETTERS & SYMBOLS



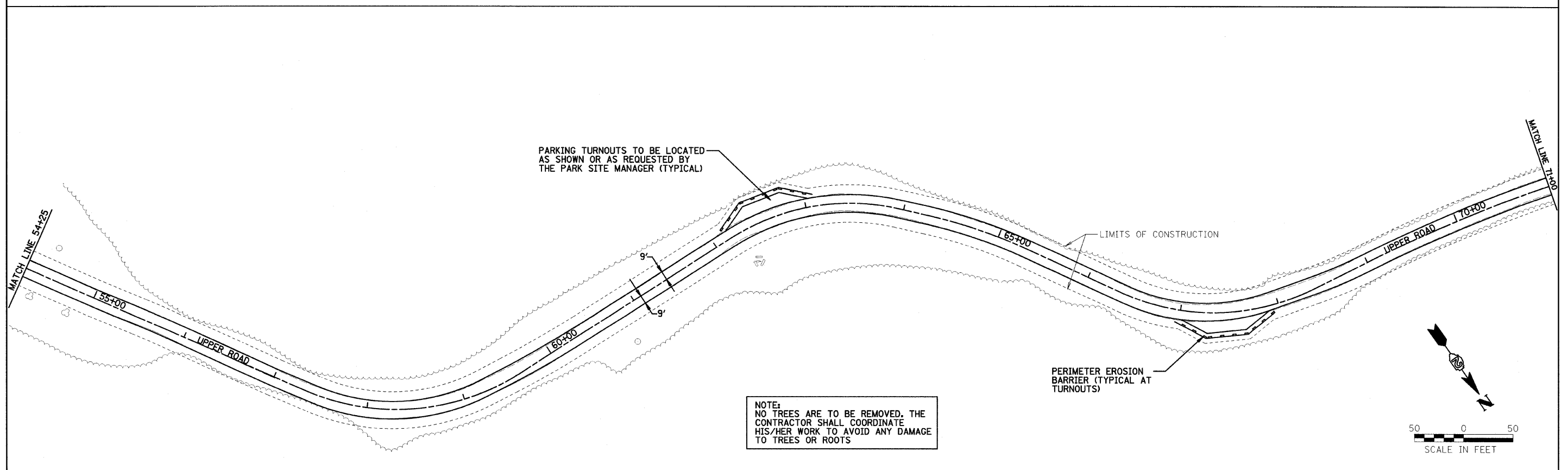
FILE NAME =	USER NAME = #USER#	DESIGNED - PJM	REVISED -	STATE OF ILLINOIS DEPARTMENT OF TRANSPORTATION	PAVEMENT MARKING SHEET		F.A. RTE.	SECTION	COUNTY	TOTAL SHEETS	SHEET NO.	
#FILEL#		DRAWN - DVH	REVISED -		SCALE:	SHEET NO. 8 OF 16 SHEETS	STA.	TO STA.	PARK ROADS	CARROLL	16	8
		CHECKED - RGD	REVISED -								CONTRACT NO. 44983	
		DATE - 12-4-07	REVISED -						FED. ROAD DIST. NO.	ILLINOIS FED. AID PROJECT		



FILE NAME = \$FILEL\$	USER NAME = \$USERS	DESIGNED - PJM	REVISED -	STATE OF ILLINOIS DEPARTMENT OF TRANSPORTATION	LOCATION MAP AND TRAFFIC CONTROL PLAN	F.A. RTE.	SECTION	COUNTY	TOTAL SHEETS	SHEET NO.	
	PLOT SCALE = \$SCALE\$	DRAWN - DVH	REVISED -				PARK ROADS	CARROLL	16	9	
	PLOT DATE = \$DATE\$	CHECKED - RGD	REVISED -			CONTRACT NO. 44983					
		DATE - 12-4-07	REVISED -			ILLINOIS FED. AID PROJECT					
				SCALE: SHEET NO. 9 OF 16 SHEETS STA. TO STA.		FED. ROAD DIST. NO. ILLINOIS FED. AID PROJECT					

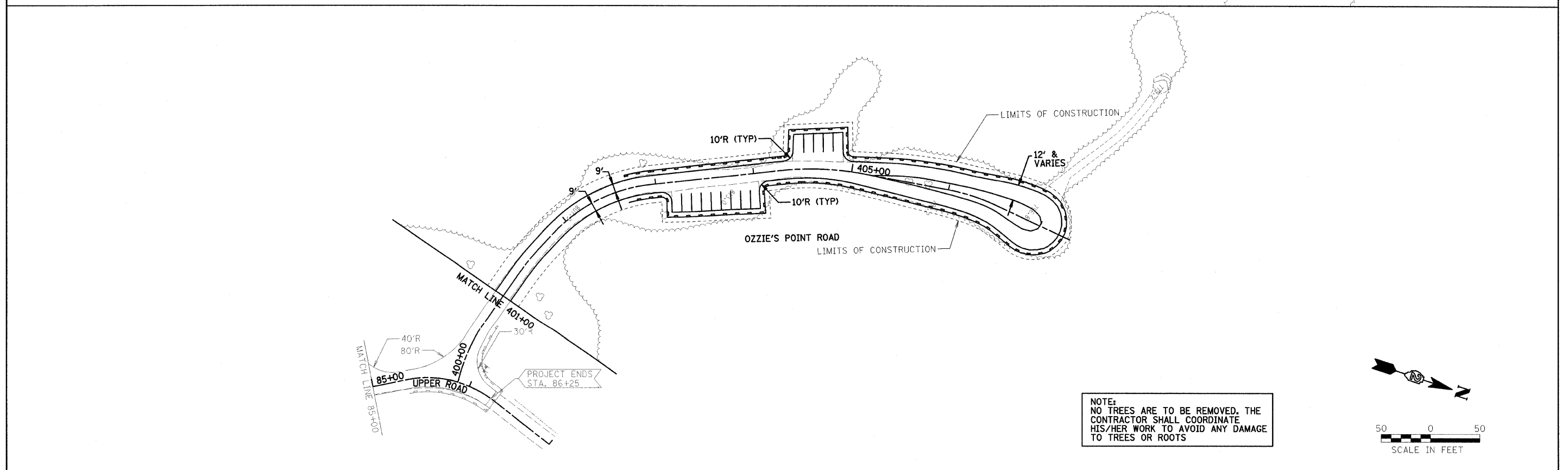
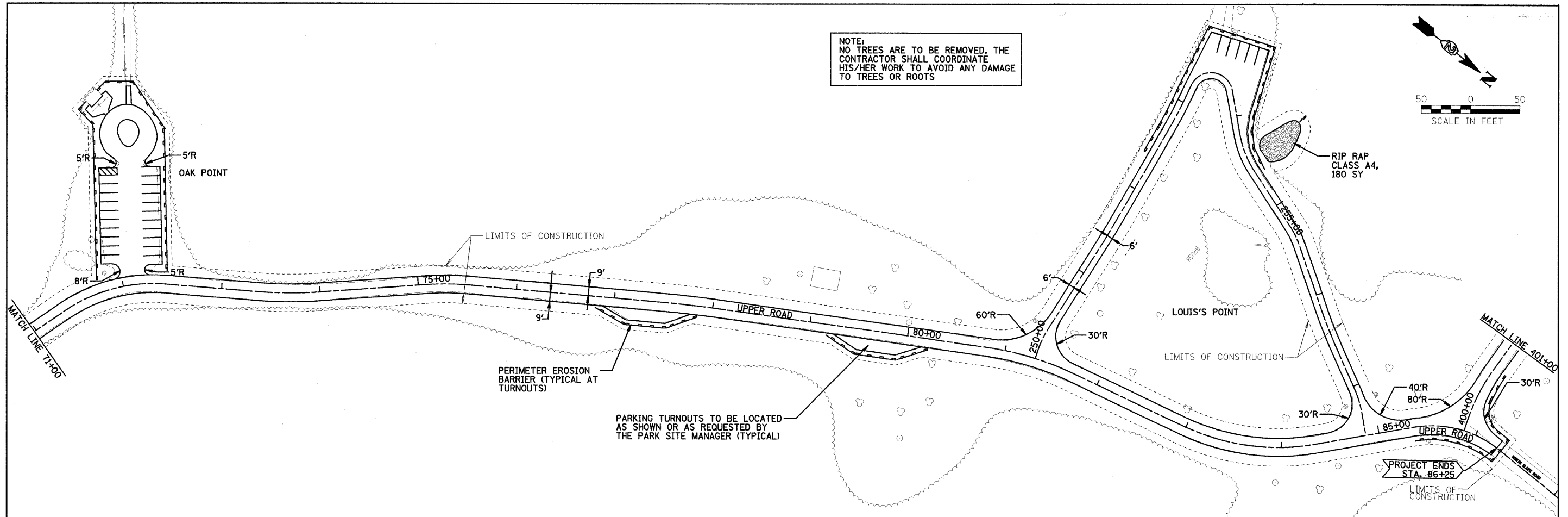


NOTE:
NO TREES ARE TO BE REMOVED. THE CONTRACTOR SHALL COORDINATE HIS/HER WORK TO AVOID ANY DAMAGE TO TREES OR ROOTS



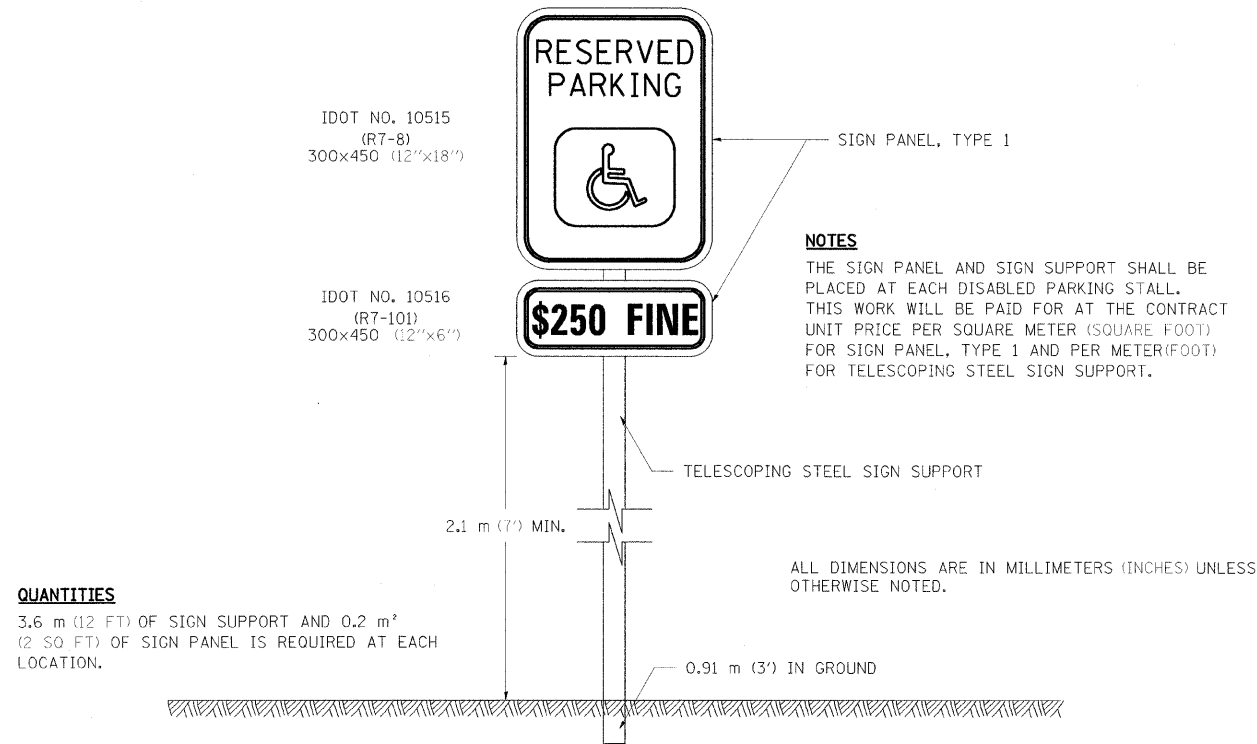
NOTE:
NO TREES ARE TO BE REMOVED. THE CONTRACTOR SHALL COORDINATE HIS/HER WORK TO AVOID ANY DAMAGE TO TREES OR ROOTS

FILE NAME =	USER NAME = #USER#	DESIGNED - PJM	REVISED -	STATE OF ILLINOIS DEPARTMENT OF TRANSPORTATION	PLAN SHEET		F.A. RTE.	SECTION	COUNTY	TOTAL SHEETS	SHEET NO.	
#FILEL#		DRAWN - DVH	REVISED -		SCALE:	SHEET NO. 10 OF 16 SHEETS	STA. 38+50 TO STA. 71+00	PARK ROADS	CARROLL	16	10	
	PLOT SCALE = #SCALE#	CHECKED - RGD	REVISED -									
	PLOT DATE = #DATE#	DATE - 12-4-07	REVISED -					FED. ROAD DIST. NO.	ILLINOIS FED. AID PROJECT			CONTRACT NO. 44983
IDNR PROJECT #1-08-001												

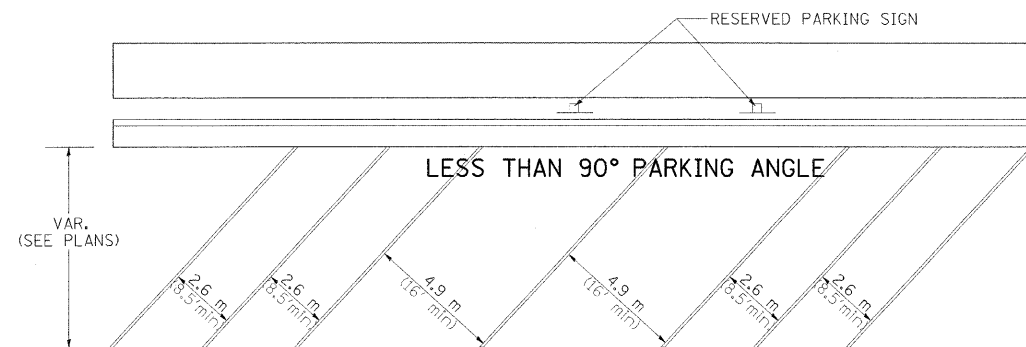
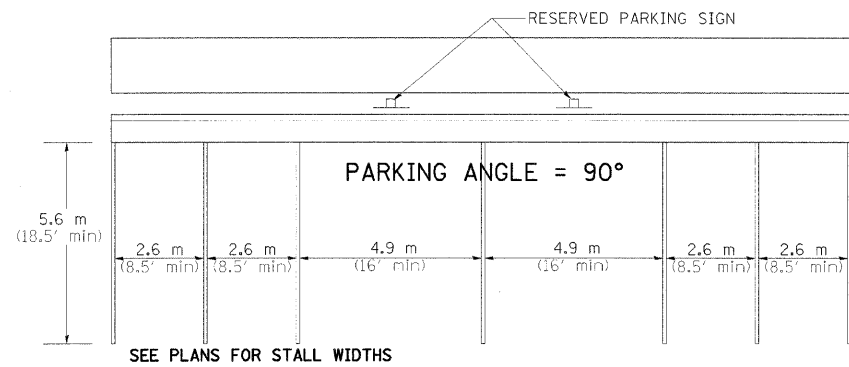


FILE NAME =	USER NAME = #USCR#	DESIGNED - PJM	REVISED -	STATE OF ILLINOIS DEPARTMENT OF TRANSPORTATION	PLAN SHEET		F.A. RTE.	SECTION	COUNTY	TOTAL SHEETS	SHEET NO.
#FILE#		DRAWN - DVH	REVISED -		SCALE:	SHEET NO. 11 OF 16 SHEETS	STA. 71+00 TO STA. 86+25	PARK ROADS	CARROLL	16	11
	PLOT SCALE = #SCALE#	CHECKED - RGD	REVISED -					CONTRACT NO. 44983			
	PLOT DATE = #DATE#	DATE - 12-4-07	REVISED -					FED. ROAD DIST. NO. ILLINOIS FED. AID PROJECT			

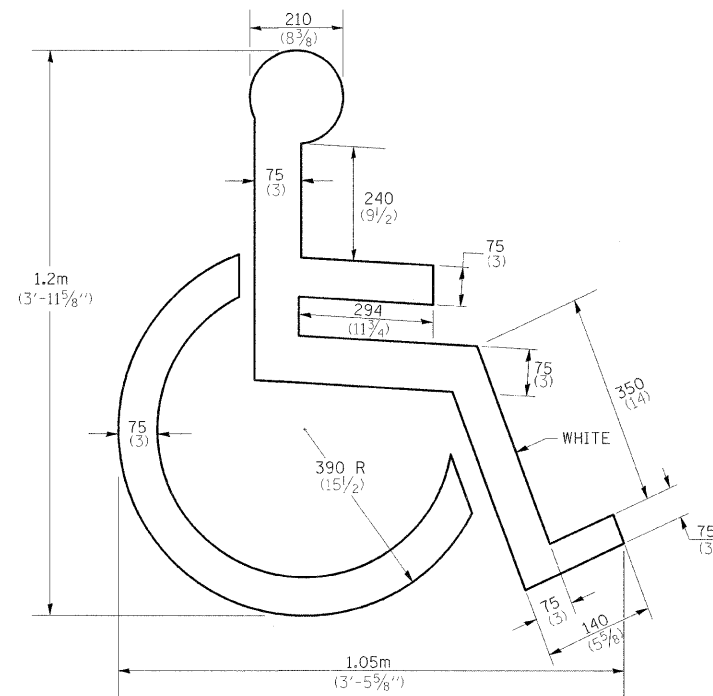
RESERVED PARKING SIGN DETAIL



DISABLED PARKING STRIPING



DISABLED SYMBOL



QUANTITY
 0.27 m² (2.9 ft²)

ALL DIMENSIONS ARE IN MILLIMETERS (INCHES) UNLESS OTHERWISE NOTED.

FILE NAME =	USER NAME = #USER#	DESIGNED - PJM	REVISED -
#FILEL#		DRAWN - DVH	REVISED -
	PLOT SCALE = #SCALE#	CHECKED - RGD	REVISED -
	PLOT DATE = #DATE#	DATE - 12-4-07	REVISED -

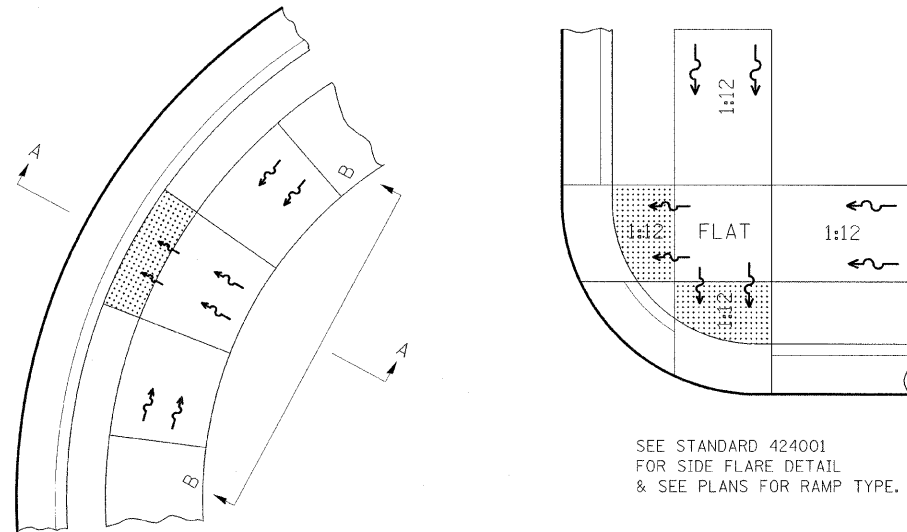
STATE OF ILLINOIS
 DEPARTMENT OF TRANSPORTATION

DISTRICT DETAILS

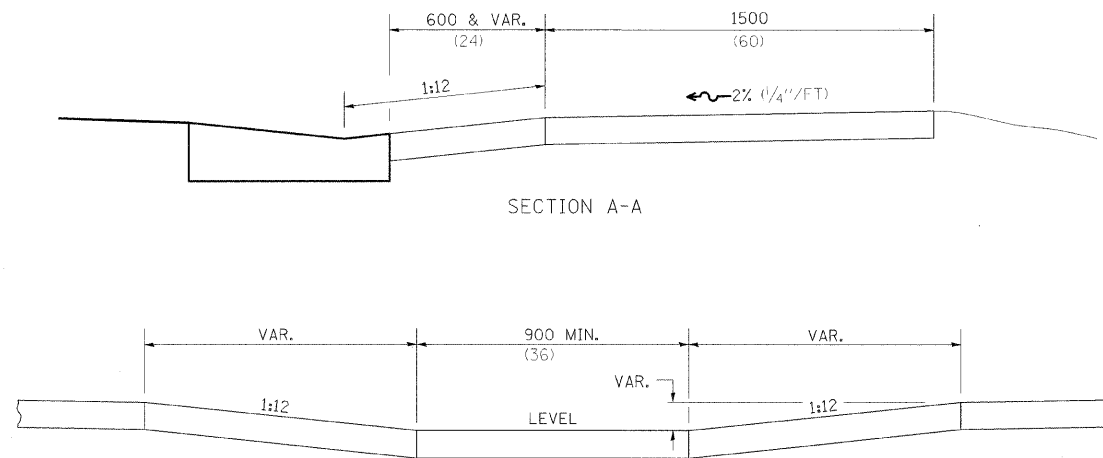
SCALE: SHEET NO. 12 OF 16 SHEETS STA. TO STA.

F.A. RTE.	SECTION	COUNTY	TOTAL SHEETS	SHEET NO.
	PARK ROADS	CARROLL	16	12
FED. ROAD DIST. NO. ILLINOIS FED. AID PROJECT			CONTRACT NO. 44983	

DISABLED RAMP DETAIL



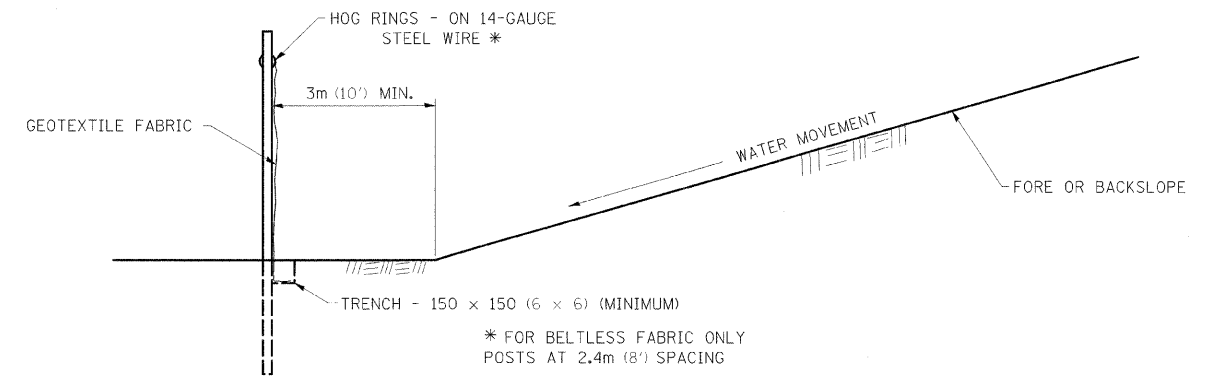
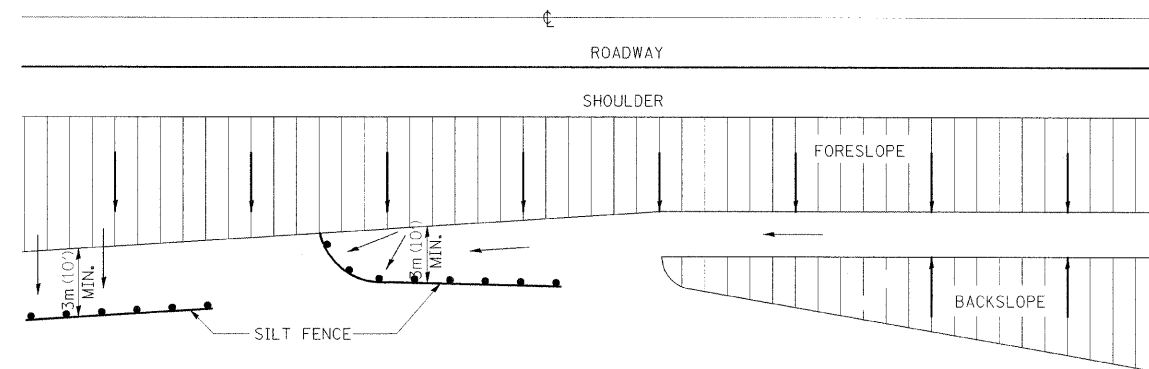
ALL DIMENSIONS ARE IN MILLIMETERS (INCHES) UNLESS OTHERWISE NOTED.



SECTION B-B

NOTES : THIS DETAIL TO BE USED IN CONJUNCTION WITH STATE STANDARD 424001.
 THE MAXIMUM ALLOWABLE CROSS SLOPE FOR SIDEWALK IS 2% (1/4"/FT) .
 THE MAXIMUM ALLOWABLE SIDEWALK GRADE IS 8% (1/2"/FT) . IF SPACE LIMITATIONS PROHIBIT THE USE OF THE 1:12 SLOPE, THEN SLOPES BETWEEN 1:10 ARE 1:12 ARE PERMITTED FOR A MAXIMUM RISE OF 150 (6) . SLOPES 1:8 AND 1:10 ARE ALLOWED FOR A MAXIMUM RISE OF 75 (3) . SLOPES STEEPER THAN 1:8 ARE NOT PERMITTED.
 THE DEPRESSED CURB IS NOT STANDARD. THE RISE IS 13(1/2) INSTEAD OF 40(1/2) .

EROSION CONTROL DETAILS FOR SILT FENCE



DETAILS OF SILT FENCE

ALL DIMENSIONS ARE IN MILLIMETERS (INCHES) UNLESS OTHERWISE NOTED.

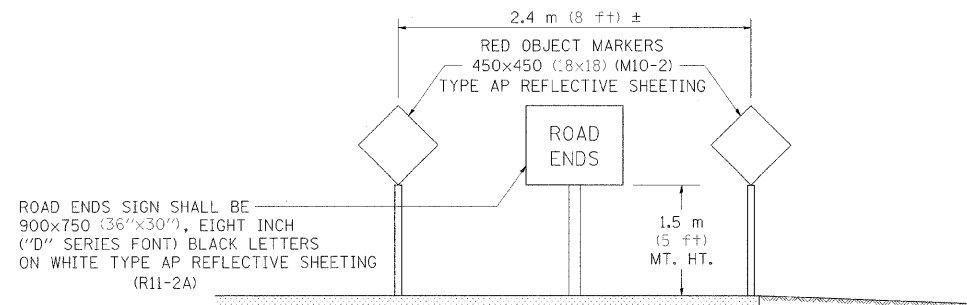
FILE NAME =	USER NAME = #USER#	DESIGNED - PJM	REVISED -	STATE OF ILLINOIS DEPARTMENT OF TRANSPORTATION	DISTRICT DETAILS		F.A. RTE.	SECTION	COUNTY	TOTAL SHEETS	SHEET NO.	
#FILE#		DRAWN - DVH	REVISED -		SCALE:	SHEET NO. 13 OF 16 SHEETS	STA.	TO STA.	PARK ROADS	CARROLL	16	13
		CHECKED - RGD	REVISED -								CONTRACT NO. 44983	
		DATE - 12-4-07	REVISED -						FED. ROAD DIST. NO.	ILLINOIS FED. AID PROJECT		

TERMINATION OF DEAD END ROADS

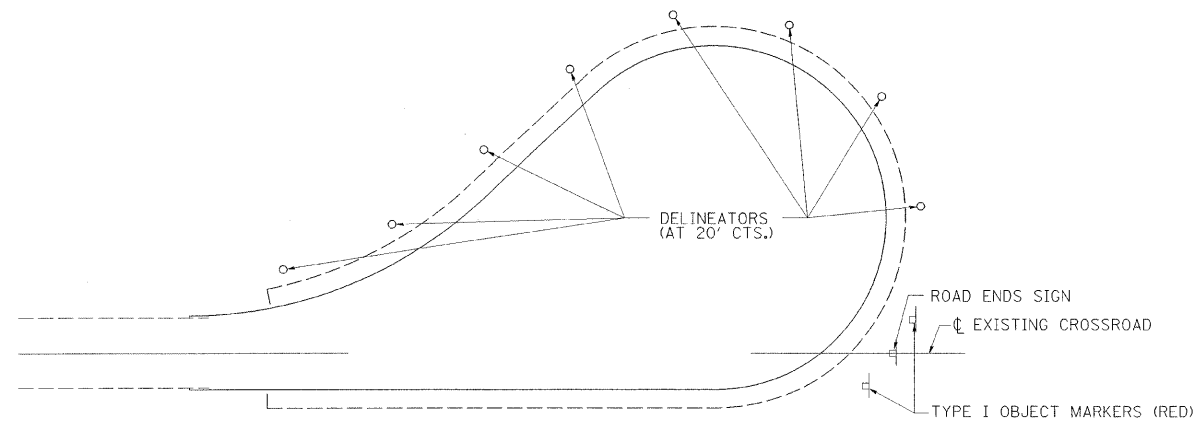
NOTES: A "NO OUTLET" (36"x36" YELLOW) SIGN SHALL BE ERECTED SLIGHTLY BEYOND THE LAST ROAD INTERSECTING THE ROAD WITH NO OUTLET. IF THIS INTERSECTION IS MORE THAN 457 m (1500 FT) FROM TERMINATION POINT, OR IF SIGHT DISTANCE TO THE CLOSURE IS LESS THAN 152 m (500 FT), A ROAD ENDS 152m (500 FT.) (WB-16) SIGN SHALL BE ERECTED 152m (500 FT.) IN ADVANCE OF THE TERMINATION OF THE ROAD. THIS WORK WILL BE PAID FOR AT THE CONTRACT UNIT PRICE PER EACH FOR "TERMINATION OF DEAD END ROADS" WHICH PRICE SHALL INCLUDE ALL LABOR, MATERIALS AND EQUIPMENT NECESSARY TO INSTALL THE SIGNS AND DELINEATORS.

USE 100x150 (4x6) WOOD POSTS INSTALLED IN ACCORDANCE WITH ARTICLE 730.0 OF STANDARD SPECIFICATIONS FOR TRAFFIC CONTROL ITEMS. USE APPLICABLE PARTS OF STANDARD 720001 FOR SIGN MOUNTING.

ALL DIMENSIONS ARE IN MILLIMETERS (INCHES) UNLESS OTHERWISE NOTED.



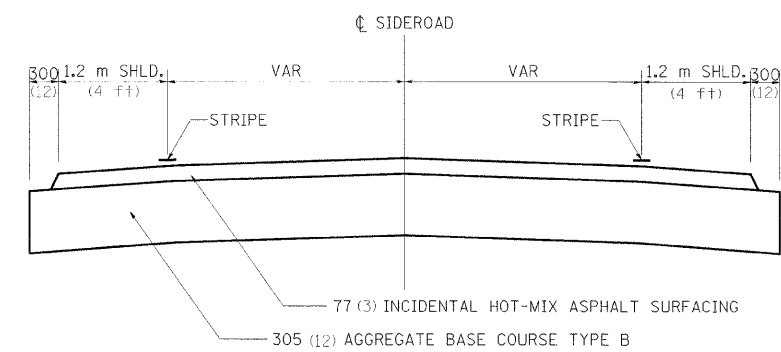
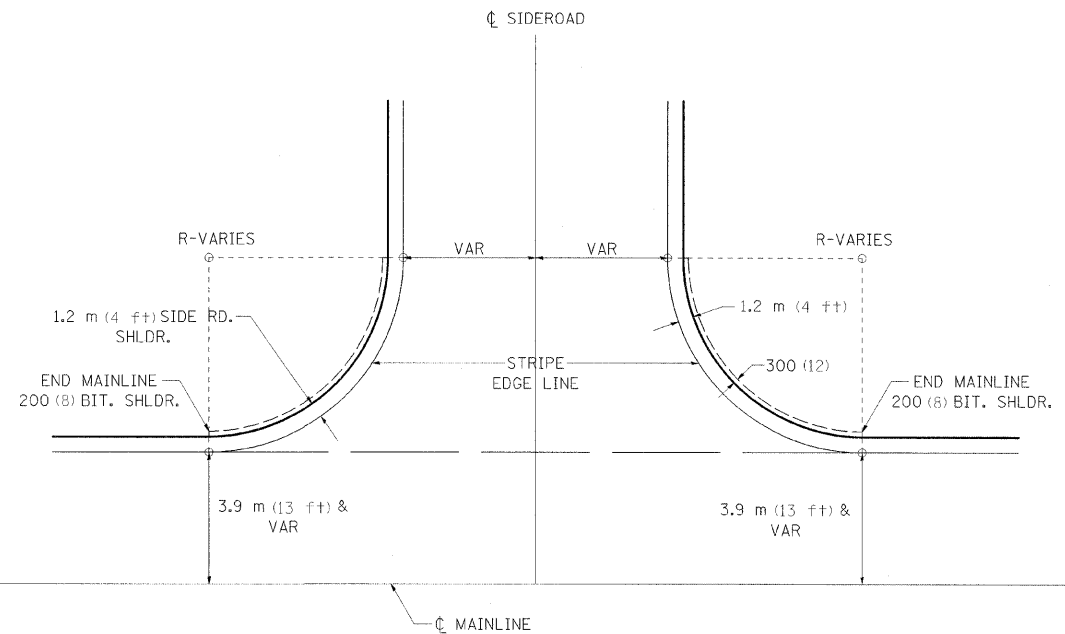
TERMINATION SIGNING



TRAFFIC CONTROL
TYPICAL CUL-DE-SAC

IDNR PROJECT #1-08-001

TYPICAL AGGREGATE BASE SIDEROAD



ALL DIMENSIONS ARE IN MILLIMETERS (INCHES) UNLESS OTHERWISE NOTED.

FILE NAME = #FILE#	USER NAME = #USER#	DESIGNED - PJM	REVISED -
		DRAWN - DVH	REVISED -
	PLOT SCALE = #SCALE#	CHECKED - RGD	REVISED -
	PLOT DATE = #DATE#	DATE - 12-4-07	REVISED -

**STATE OF ILLINOIS
DEPARTMENT OF TRANSPORTATION**

DISTRICT DETAILS

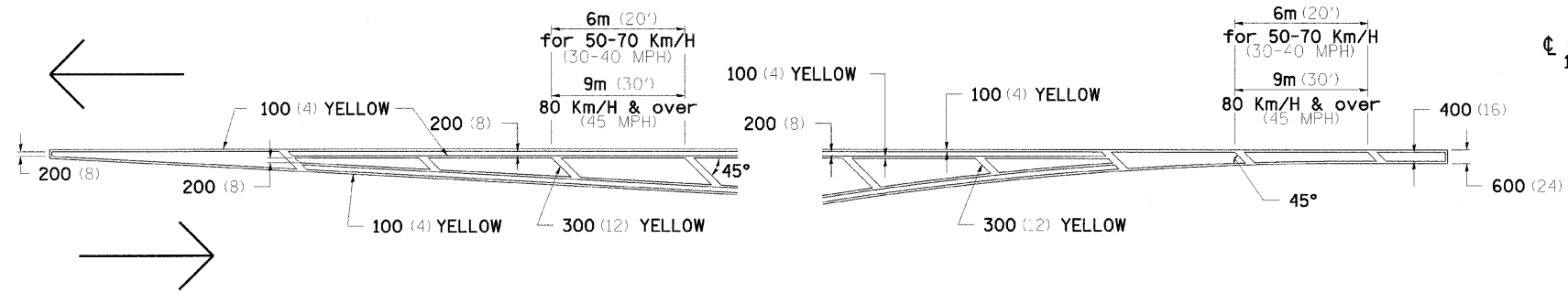
SCALE: SHEET NO. 14 OF 16 SHEETS STA. TO STA.

F.A. RTE.	SECTION	COUNTY	TOTAL SHEETS	SHEET NO.
	PARK ROADS	CARROLL	16	14
FED. ROAD DIST. NO. ILLINOIS FED. AID PROJECT			CONTRACT NO. 44983	

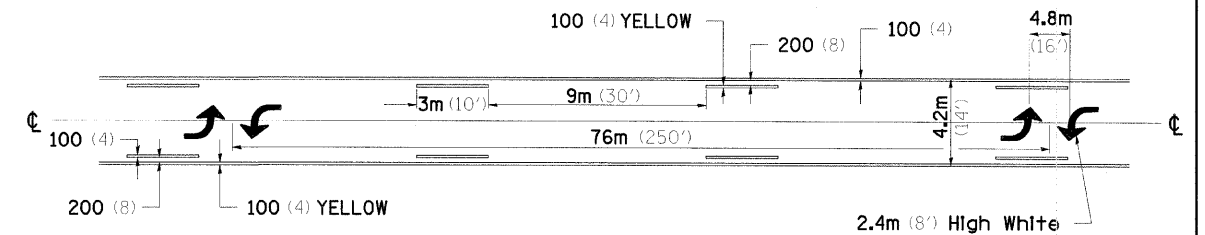
IDNR PROJECT #1-08-001

TYPICAL PAVEMENT MARKINGS

TYPICAL PAVEMENT MARKING FOR FLUSH MEDIAN AT LEFT TURN LANE

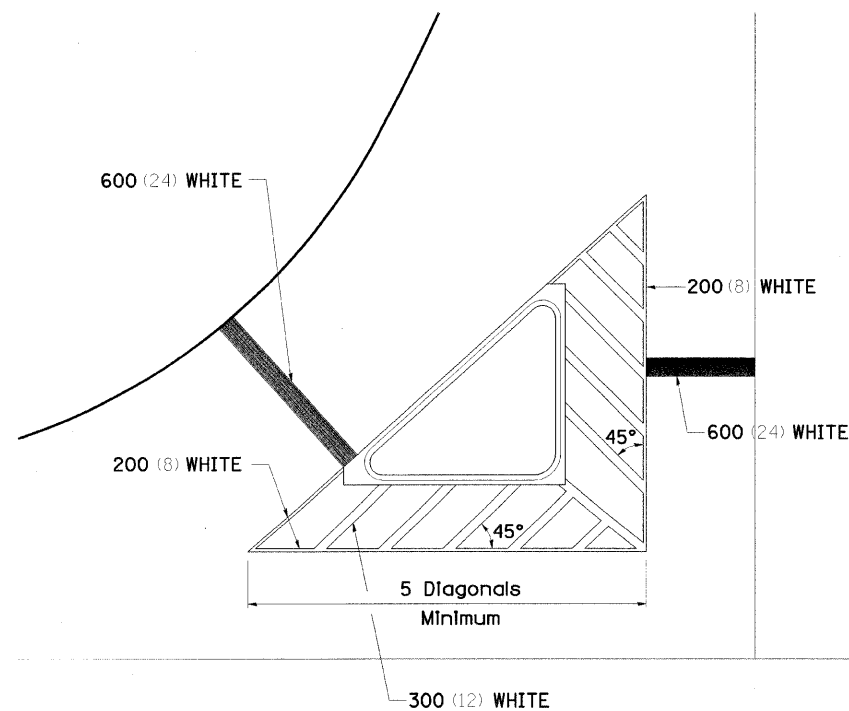


MEDIAN PAVEMENT MARKING

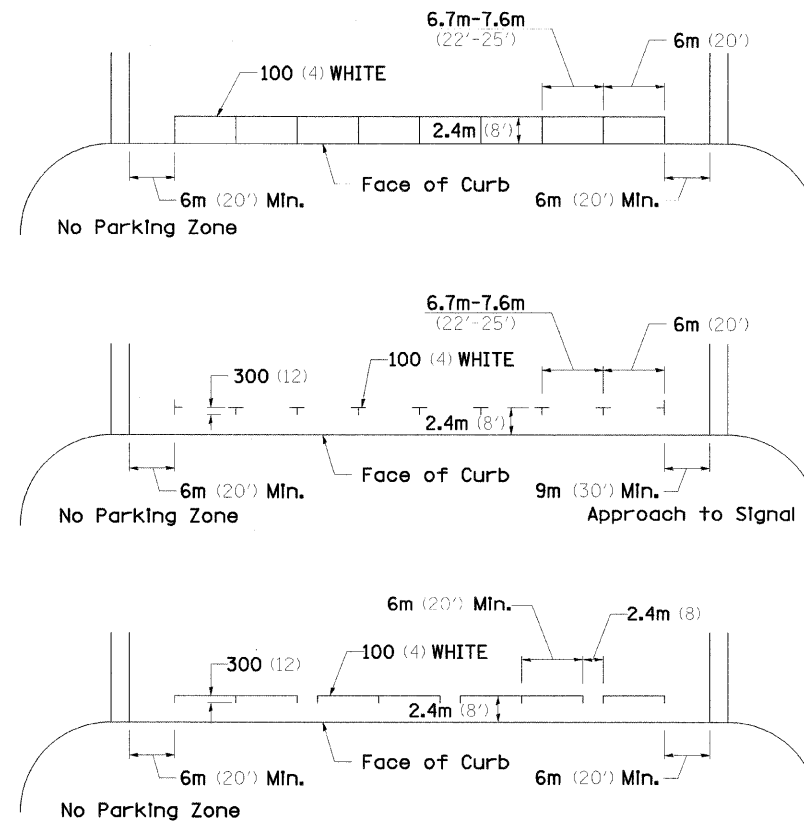


** ALL DIMENSIONS ARE IN MILLIMETERS (INCHES) UNLESS OTHERWISE NOTED.

TYPICAL ISLAND OFFSET SHOULDER WIDTH

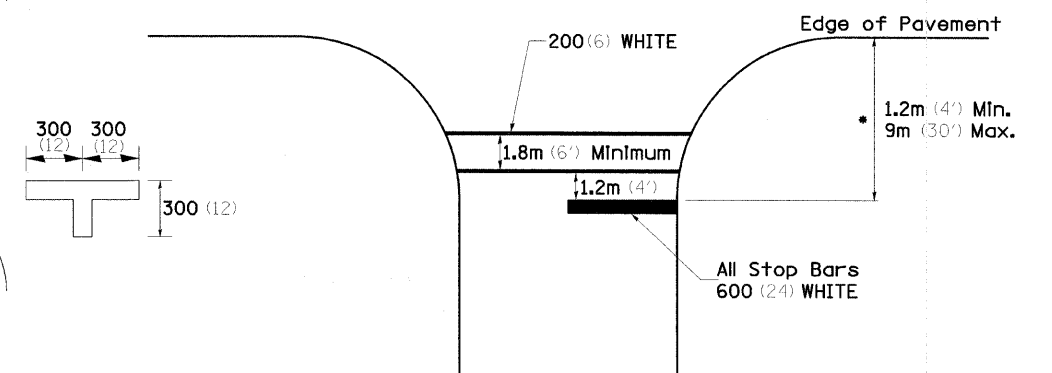


TYPICAL PARKING SPACING



STANDARD CROSSWALK MARKING

See Schedules for Locations

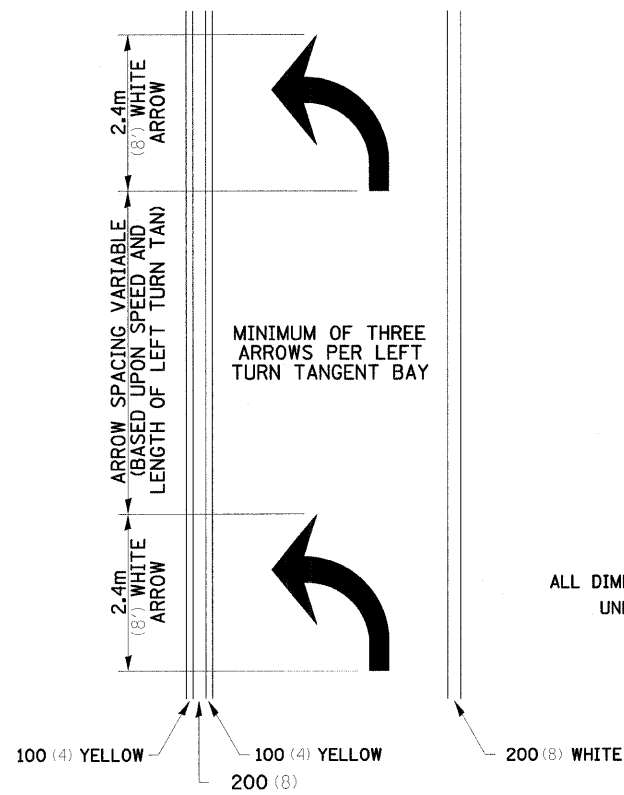


* Distance to the nearest edge of the intersecting roadway in the absence of a marked crosswalk.

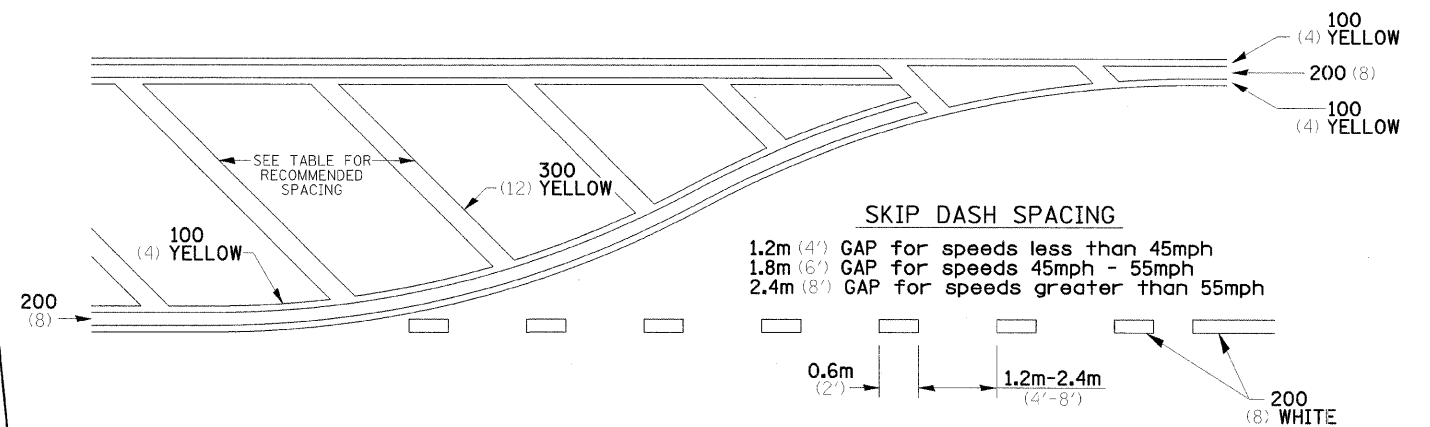
FILE NAME =	USER NAME = #USER#	DESIGNED - PJM	REVISED - 7-20-06	STATE OF ILLINOIS DEPARTMENT OF TRANSPORTATION	DISTRICT DETAILS	F.A. RTE.	SECTION	COUNTY	TOTAL SHEETS	SHEET NO.	
#FILEL#	PLOT SCALE = #SCALE#	DRAWN - DVH	REVISED -			PARK ROADS	CARROLL	16	15		
	PLOT DATE = #DATE#	CHECKED - RGD	REVISED -			CONTRACT NO. 44983					
		DATE - 12-4-07	REVISED -			SCALE: SHEET NO. 15 OF 16 SHEETS STA. TO STA. FED. ROAD DIST. NO. ILLINOIS FED. AID PROJECT					

TYPICAL PAVEMENT MARKINGS

ARROW LAYOUT



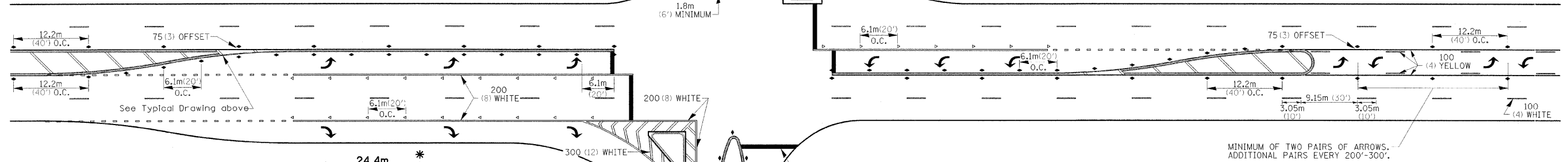
TYPICAL PAVEMENT MARKING FOR FLUSH MEDIAN



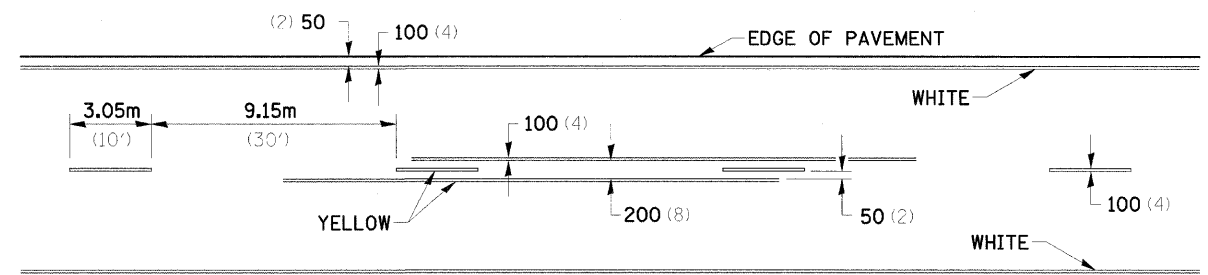
RECOMMENDED SPACING BETWEEN DIAGONALS (IN FEET)

Speed Limit Range	Continuous Median Area	Intersection Channelization	Objects (Islands)
less than 50km/H (30MPH)	15.3m (50')	4.53m (15')	3.05m (10')
50-60km/H (30-40MPH)	22.9m (75')	6.1m (20')	4.53m (15')
70km/H (45MPH) & over	22.9m (75')	9.05m (30')	6.1m (20')

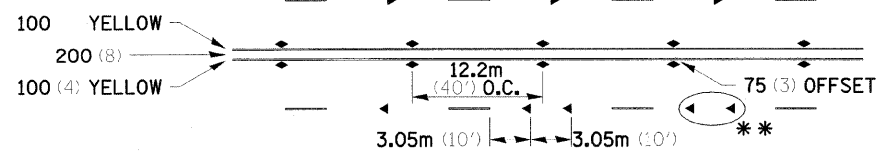
NOTE: If the spacing recommended in the Table does not permit at least five diagonal lines in the area being marked, the spacing from the next lowest speed range should be used. The recommended spacing is measured parallel to the pavement center line.



TYPICAL PAVEMENT MARKING FOR TWO LANE SECTION - NO PASSING ZONES



SYMBOLS



- * REDUCE TO 12.2m (40') O.C. ON CURVES WHERE ADVISORY SPEEDS ARE 15km/H (10MPH) LOWER THAN POSTED SPEEDS.
- ** USE DOUBLE MARKERS WHEN ADT ≥ 25,000

MULTI-LANE / UNDIVIDED

FILE NAME =	USER NAME = #USER#	DESIGNED - PJM	REVISED - 7-20-06	STATE OF ILLINOIS DEPARTMENT OF TRANSPORTATION	DISTRICT DETAILS			F.A. RTE.	SECTION	COUNTY	TOTAL SHEETS	SHEET NO.
#FILE#		DRAWN - DVH	REVISED -		SCALE:	SHEET NO.	OF 16 SHEETS	STA.	PARK ROADS	CARROLL	16	16
		CHECKED - RGD	REVISED -					TO STA.			CONTRACT NO. 44983	
		DATE - 12-4-07	REVISED -						FED. ROAD DIST. NO.	ILLINOIS FED. AID PROJECT		