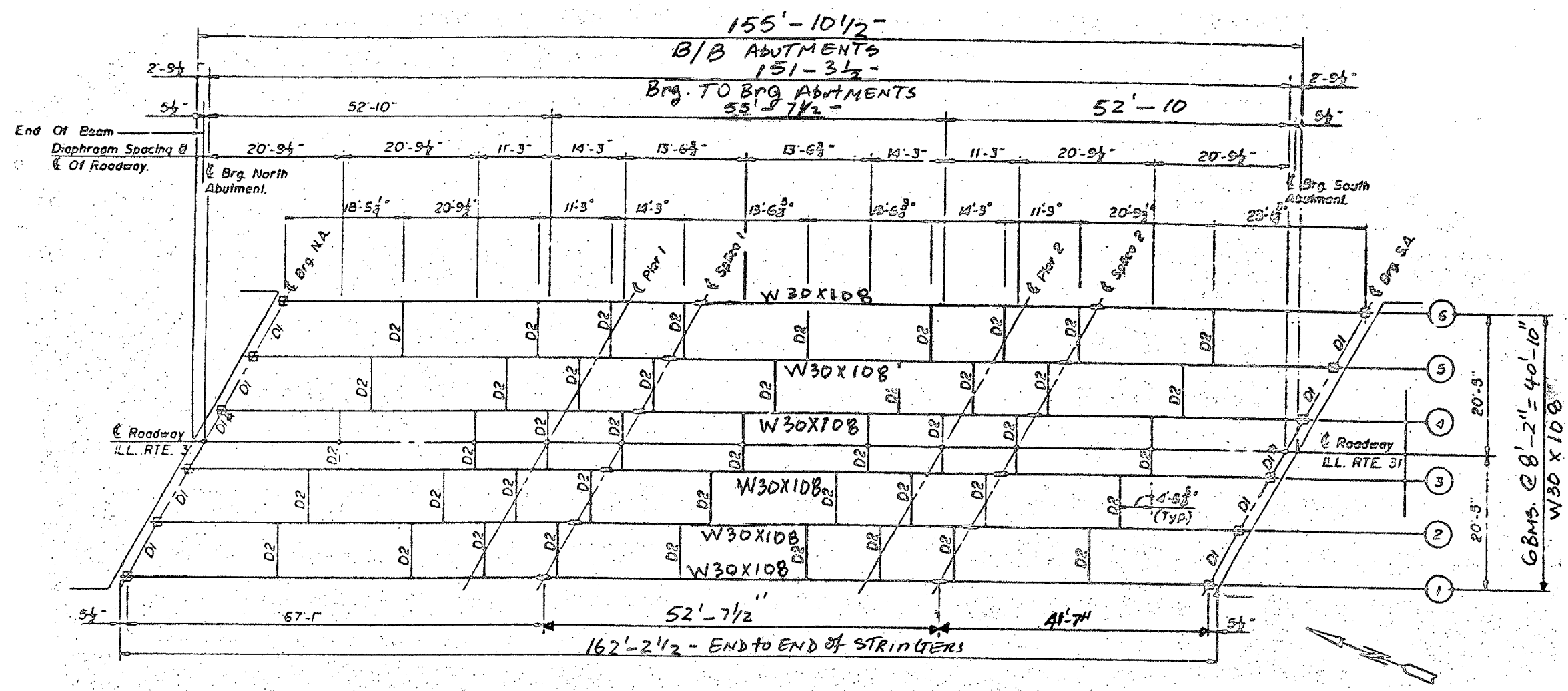
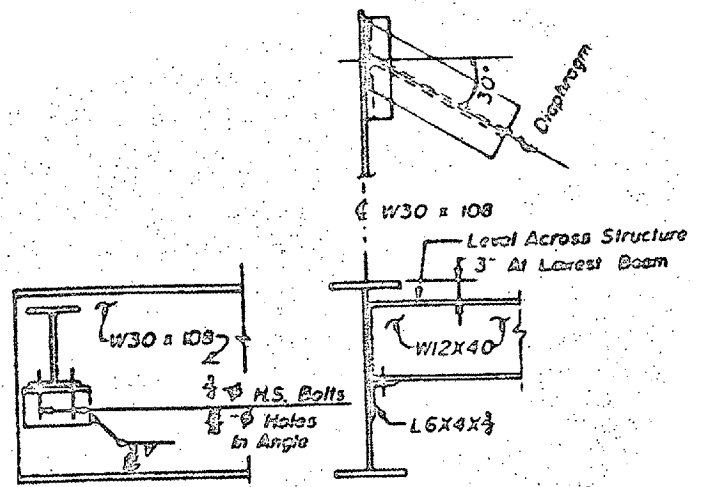


ROUTE	SECTION	COUNTY	TOTAL SHEETS	SHEET NUMBER
VARIOUS	2007-041 BP	VARIOUS	25	20

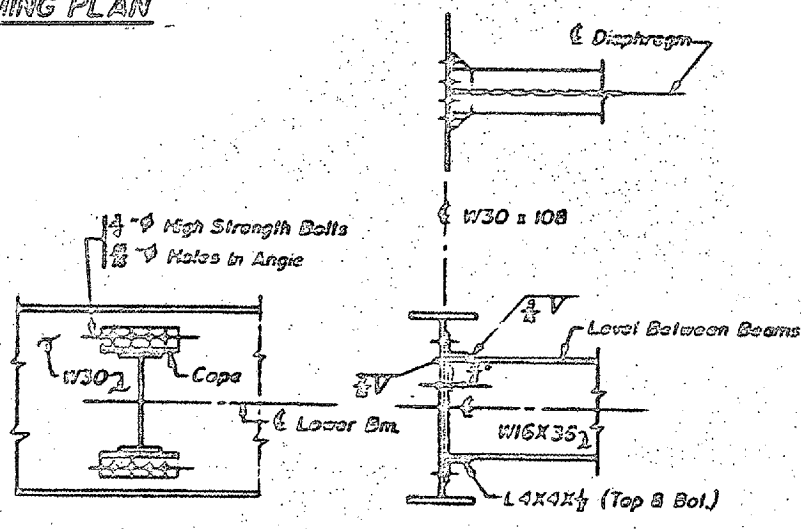
CONTRACT NO. 60D31



FRAMING PLAN



END DIAPHRAGM D1



INTERIOR DIAPHRAGM D2

LOCATION NO.5

EXIST. BRIDGE PLANS

IL 31 OVER NIPPERSINK CREEK

SN: 056-0037