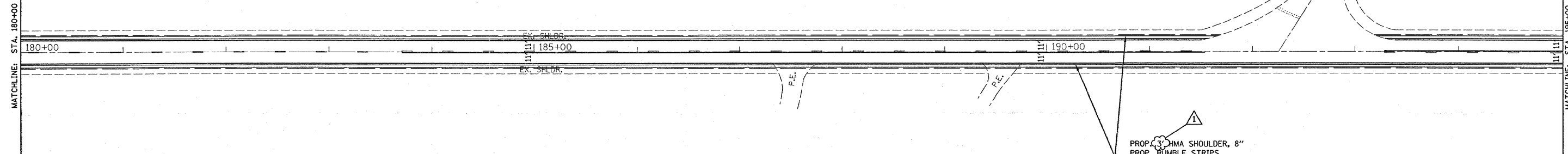
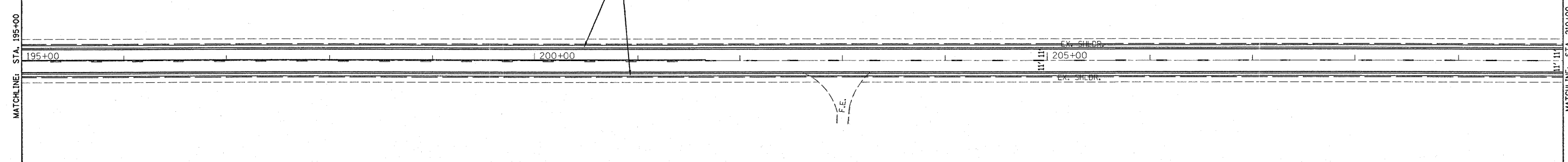


U.S. RTE. 14



U.S. RTE. 14



FILE NAME = c:\projects\dl01008\design_00.dgn	USER NAME = SMITHKL	DESIGNED -	REVISED - Δ 2/14/08 K.S.	STATE OF ILLINOIS DEPARTMENT OF TRANSPORTATION	EXISTING AND PROPOSED ROADWAY PLANS US 14 (IL 47 TO IL 176)			F.A.P. RTE. 305	SECTION 2007-048 I	COUNTY MCHENRY	TOTAL SHEETS 19	SHEET NO. 12
	PLOT SCALE = 50,0000 ' / IN.	CHECKED -	REVISED -					SCALE: SHEET NO. OF SHEETS STA. TO STA.			CONTRACT NO. 60D38	
	PLOT DATE = 2/15/2008	DATE -	REVISED -		FED. ROAD DIST. NO. 1 (ILLINOIS) FED. AID PROJECT							