

F.A.P. RTE.	SECTION	COUNTY	TOTAL SHEETS	SHEET NO.
305	2007-048 I	MCHENRY	19	3
FED. ROAD DIST. NO. 1		ILLINOIS	HIGHWAY PROJECT	

CONTRACT NO. 60D38

SUMMARY OF QUANTITIES			TOTAL QUANTITIES		CONSTRUCTION TYPE CODE				
CODE NO	ITEM	UNIT		URBAN 90% FED. 10% STATE SFTY-2A					
20201200	REMOVAL AND DISPOSAL OF UNSUITABLE MATERIAL	CU YD	5745	5745					
31102100	SUB-BASE GRANULAR MATERIAL, TYPE C 4"	SQ YD	17,225	17,225					
48102100	AGGREGATE WEDGE SHOULDER, TYPE B	TON	600	600					
48203029	HOT-MIX ASPHALT SHOULDERS, 8"	SQ YD	17,225	17,225					
64200105	SHOULDER RUMBLE STRIP	FOOT	51670	51670					
67000400	ENGINEER'S FIELD OFFICE, TYPE A	CAL MO	3	3					
67100100	MOBILIZATION	L SUM	1	1					
70100450	TRAFFIC CONTROL AND PROTECTION, STANDARD 701201	L SUM	1	1					
70100460	TRAFFIC CONTROL AND PROTECTION, STANDARD 701306	L SUM	1	1					
X0322256	TEMPORARY INFORMATION SIGNING	SQ FT	52	52					
* XX005938	SOLAR -POWERED FLASHING BEACON ASSEMBLY (COMPLETE)	EACH	2	2					

SUMMARY OF QUANTITIES			TOTAL QUANTITIES		CONSTRUCTION TYPE CODE				
CODE NO	ITEM	UNIT							

* SPECIALTY ITEMS

* SPECIALTY ITEM

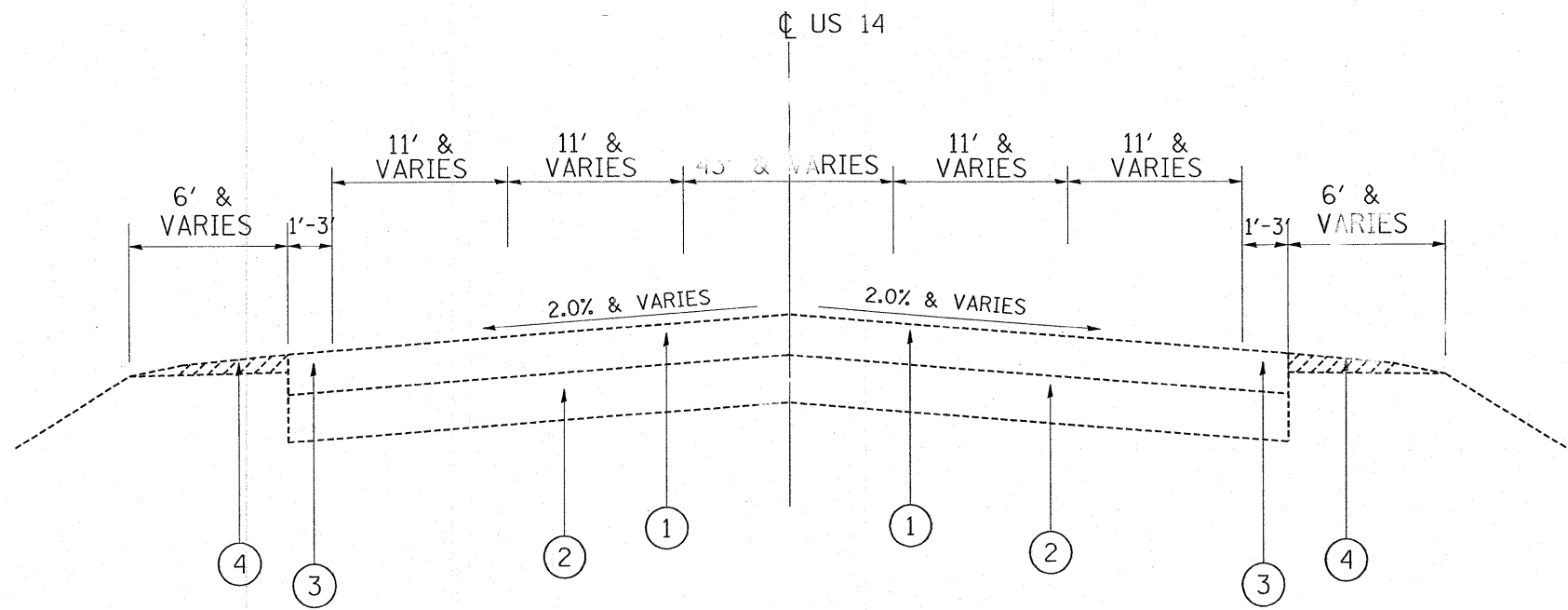
REVISIONS	
NAME	DATE

ILLINOIS DEPARTMENT OF TRANSPORTATION
SUMMARY OF QUANTITIES

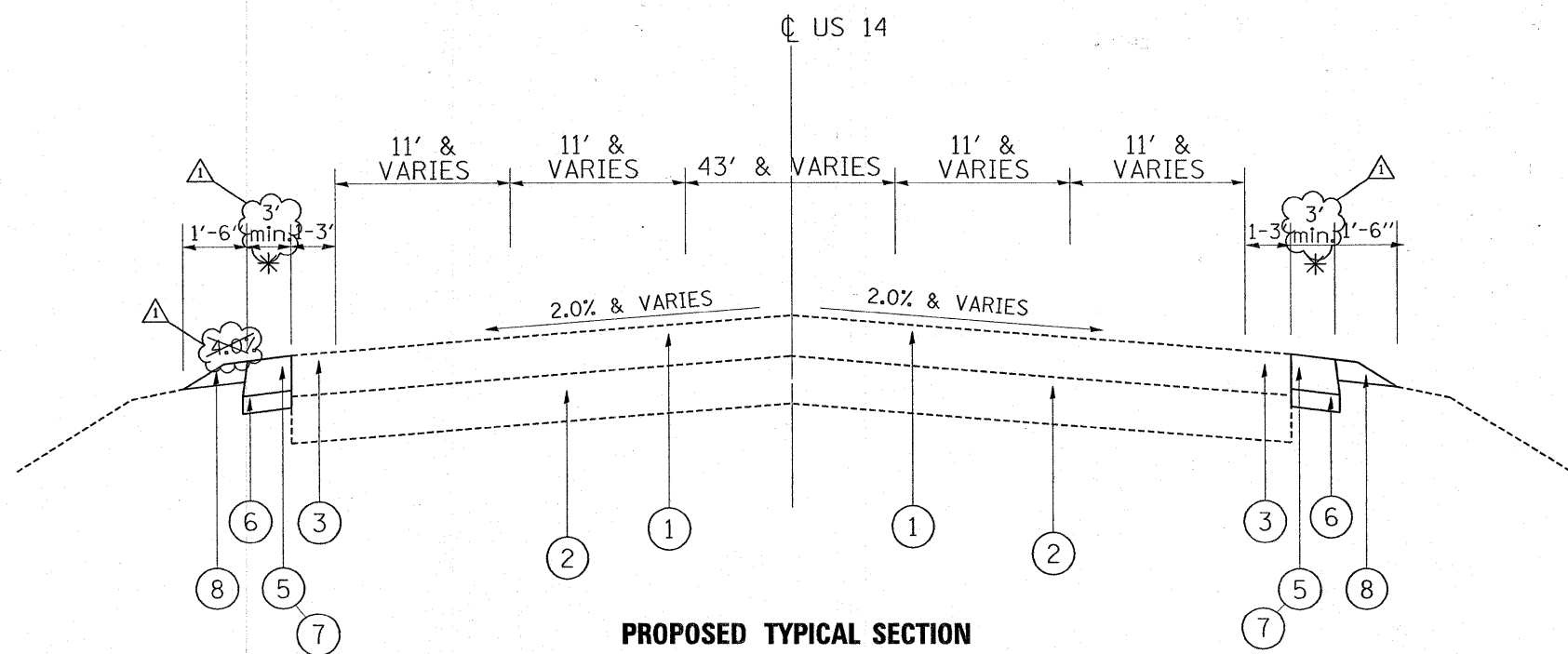
Rev. 2-22-08

PLOT DATE: 12/27/2007

12/27/2007 10:00:00 AM



**EXISTING TYPICAL SECTION
US 14
STA. 11+97 TO 65+35**



**PROPOSED TYPICAL SECTION
US 14
STA. 11+97 TO 65+35**

LEGEND

- ① EXIST. HOT-MIX ASPHALT PAVEMENT, 8''(±)
- ② EXIST. P.C.C. BASE COURSE, 9''(±)
- ③ EXIST. HOT-MIX ASPHALT SAFETY SHOULDER
- ④ EXIST. AGGREGATE SHOULDER (TO BE PARTIALLY REMOVED)
- ⑤ PROP. HOT-MIX ASPHALT SHOULDER, 8''
- ⑥ PROP. SUBBASE GRANULAR MATERIAL, TYPE C, 4''
- ⑦ PROP. SHOULDER RUMBLE STRIPS
- ⑧ PROP. AGGREGATE WEDGE SHOULDER, TYPE B

NOTES:

* NEW SHOULDER PLUS EXISTING SAFETY SHOULDER SHALL EQUAL 4' MINIMUM.

RUMBLE STRIPS ARE TO BE PLACED ON NEW HMA SHOULDERS AND IN AREAS WHERE 4' (OR MORE) HMA SHOULDERS EXIST WITHIN THE PROJECT LIMITS.

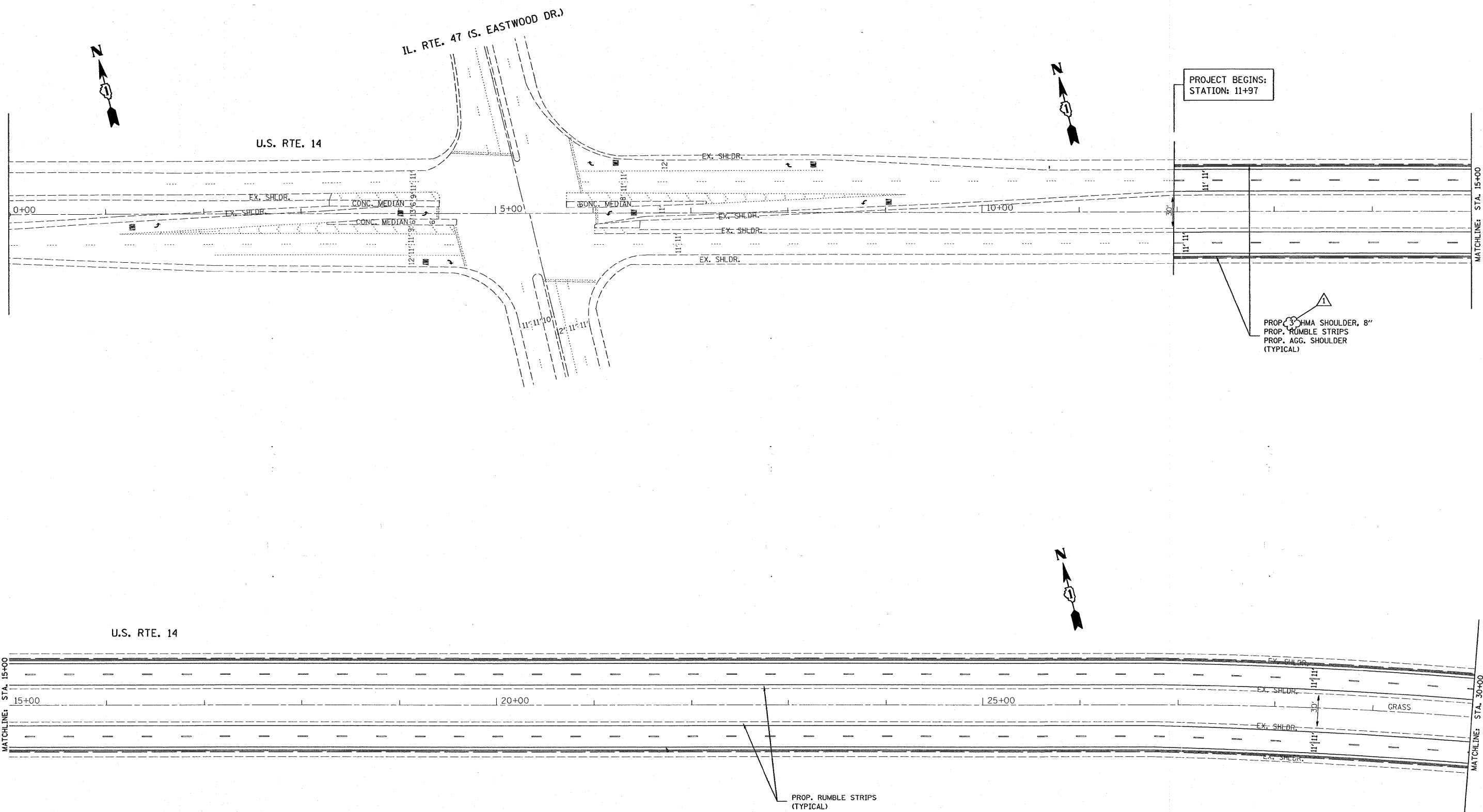
SHOULDER RUMBLE STRIPS SHALL BE PLACED ACCORDING TO HIGHWAY STANDARD 642001

HOT-MIX ASPHALT MIXTURE REQUIREMENTS

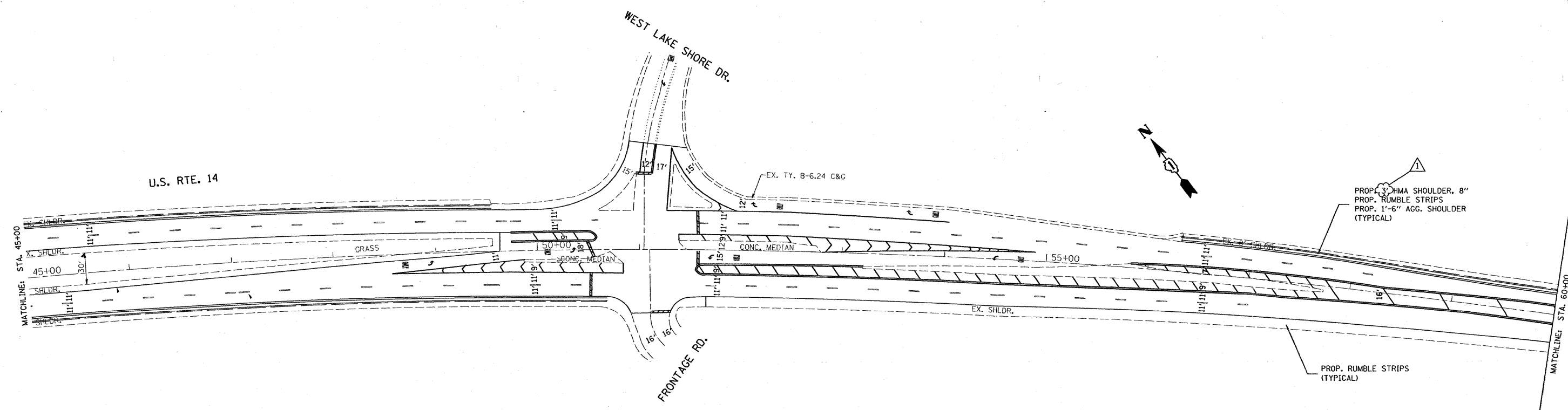
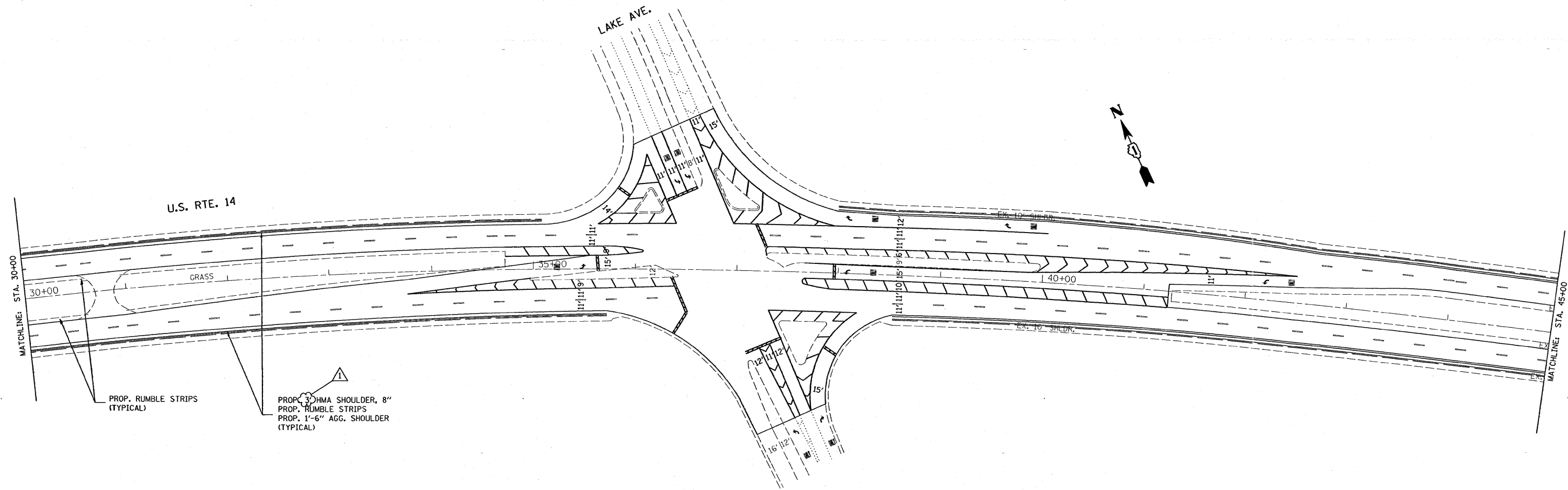
	MIXTURE USE	AC TYPE	AIR VOIDS (%)
SHOULDERS	HOT-MIX ASPHALT SHOULDERS, 8''	PG 64-22*	2% @ 30 GYR

THE UNIT WEIGHT USED TO CALCULATE ALL HOT-MIX ASPHALT SURFACE MIXTURE QUANTITIES IS 112 LBS/SY/IN.

* WHEN RAP EXCEEDS 20%, THE NEW ASPHALT BINDER IN THE MIX SHALL BE PG 58-22



FILE NAME = c:\projects\dl01008\design_00.dgn	USER NAME = SMITHKL	DESIGNED -	REVISED - Δ 2/14/08 K.S.	STATE OF ILLINOIS DEPARTMENT OF TRANSPORTATION	EXISTING AND PROPOSED ROADWAY PLANS US 14 (IL 47 TO IL 176)				F.A.P. RTE. 305	SECTION 2007-048 I	COUNTY MCHENRY	TOTAL SHEETS 19	SHEET NO. 6
	PLOT SCALE = 50,0000' / IN.	CHECKED -	REVISED -						SCALE: SHEET NO. OF SHEETS STA. TO STA.				CONTRACT NO. 60D38
	PLOT DATE = 2/15/2008	DATE -	REVISED -		FED. ROAD DIST. NO. 1 ILLINOIS FED. AID PROJECT								



FILE NAME =
 c:\projects\dl01008\design.eodgn

USER NAME = SMITHKL
 PLOT SCALE = 50,0000' / IN.
 PLOT DATE = 2/15/2008

DESIGNED -
 DRAWN -
 CHECKED -
 DATE -

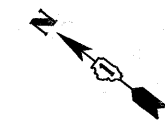
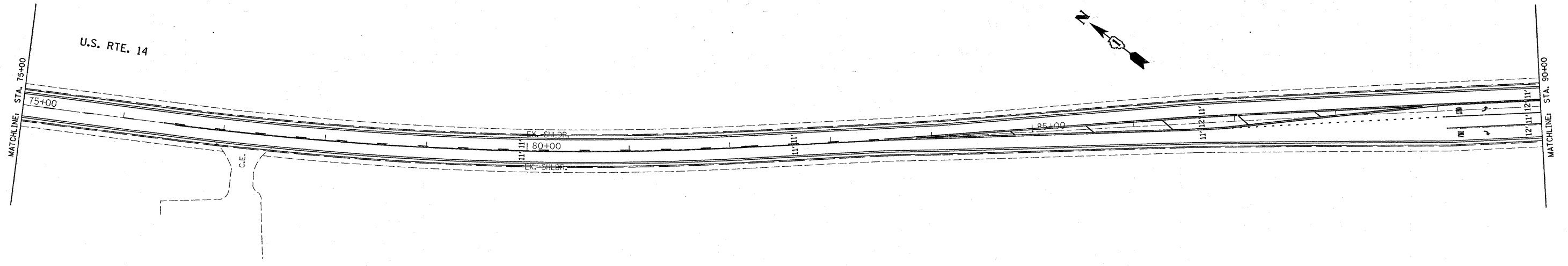
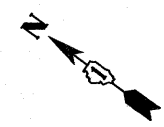
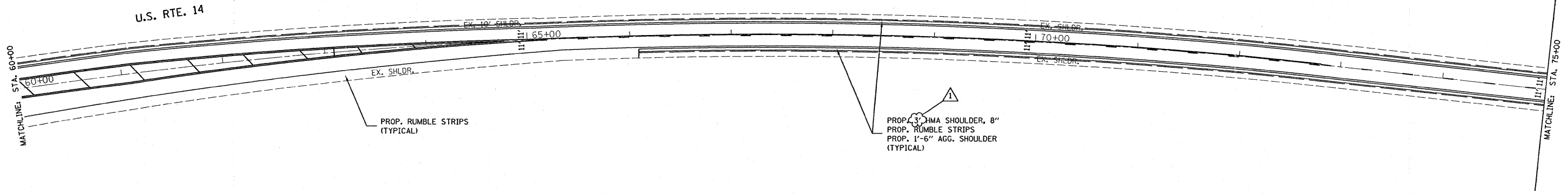
REVISED - Δ 2/14/08 K.S.
 REVISED -
 REVISED -
 REVISED -

**STATE OF ILLINOIS
 DEPARTMENT OF TRANSPORTATION**

**EXISTING AND PROPOSED ROADWAY PLANS
 US 14 (IL 47 TO IL 176)**

SCALE: SHEET NO. OF SHEETS STA. TO STA.

F.A.P. RTE. 305	SECTION 2007-048 I	COUNTY MCHENRY	TOTAL SHEETS 19	SHEET NO. 7
FED. ROAD DIST. NO. 1 (ILLINOIS) FED. AID PROJECT CONTRACT NO. 60D38				



FILE NAME =
ca\projects\dl01008\design_00.dgn

USER NAME = SMITHKL
PLOT SCALE = 50.0000' / IN.
PLOT DATE = 2/15/2008

DESIGNED -
DRAWN -
CHECKED -
DATE -

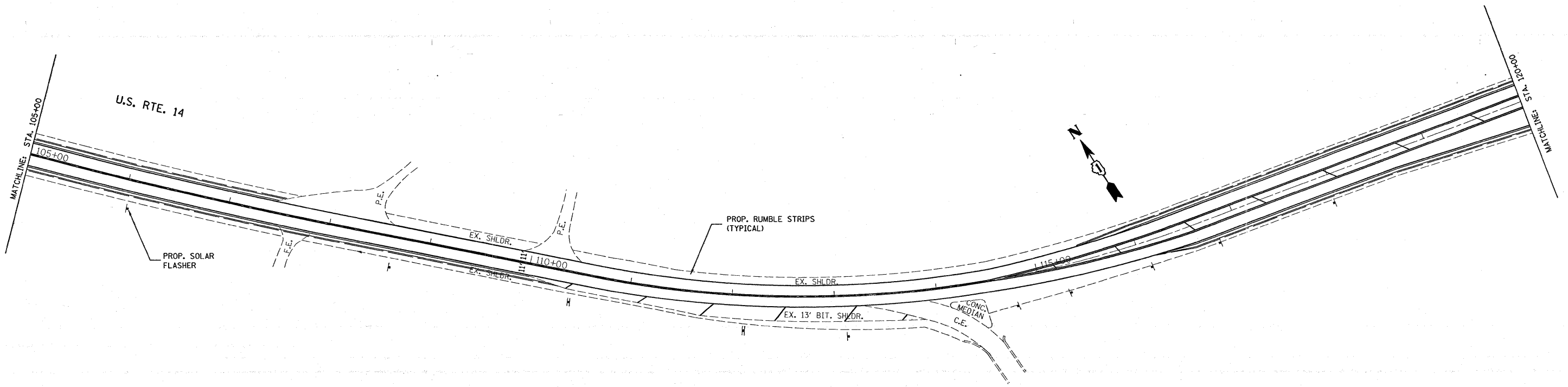
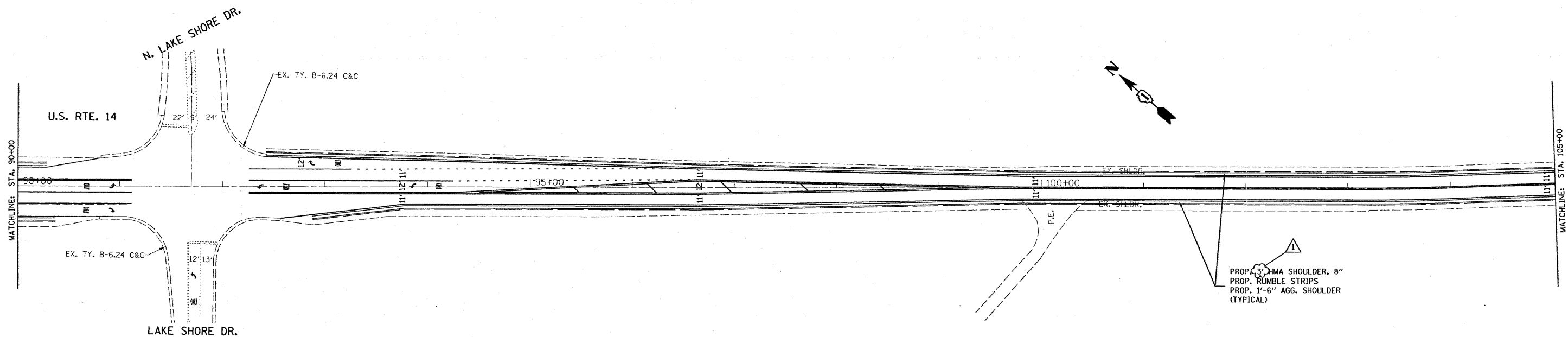
REVISED - Δ 2/14/08 K.S.
REVISED -
REVISED -
REVISED -

**STATE OF ILLINOIS
DEPARTMENT OF TRANSPORTATION**

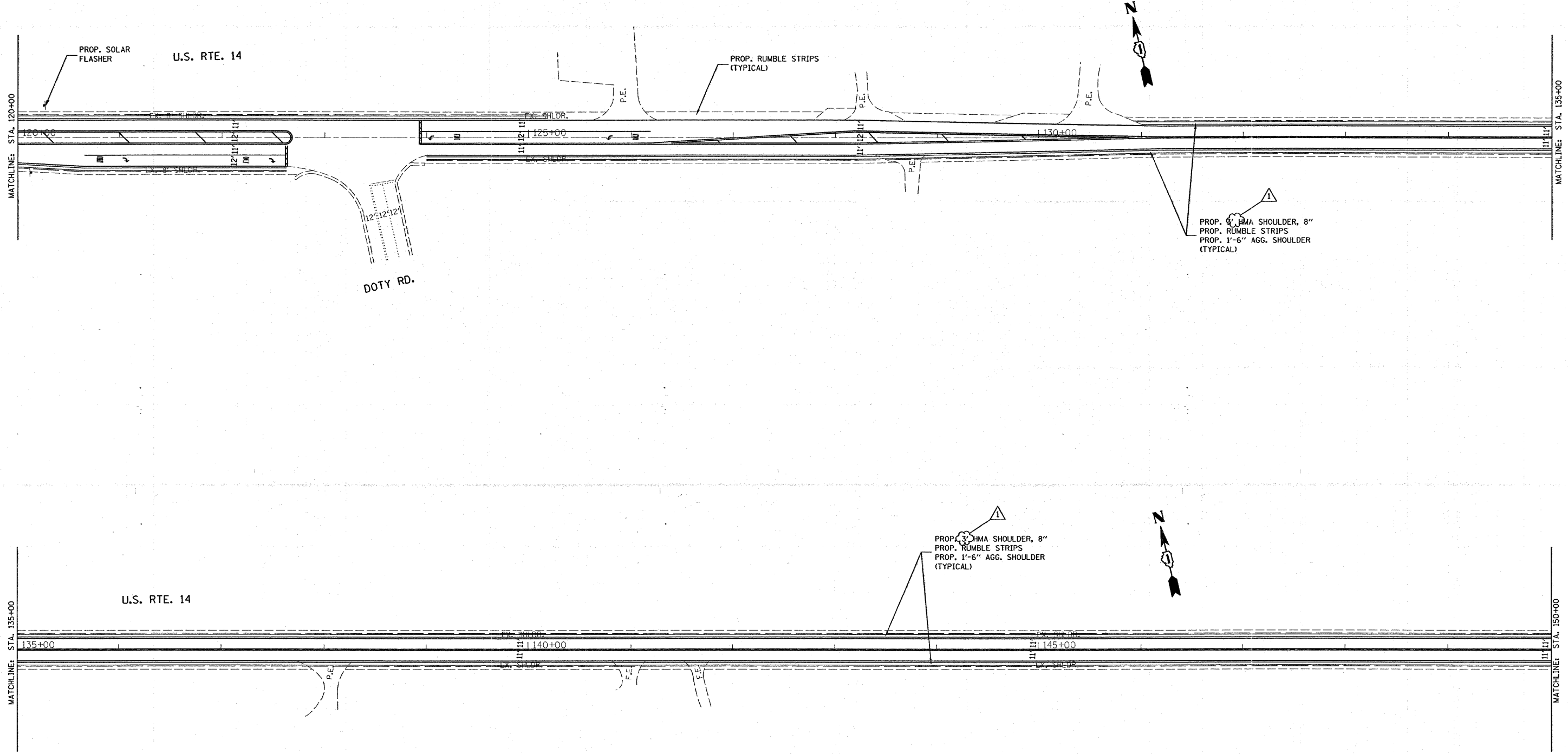
**EXISTING AND PROPOSED ROADWAY PLANS
US 14 (IL 47 TO IL 176)**

SCALE: SHEET NO. OF SHEETS STA. TO STA.

F.A.P. RTE. 305	SECTION 2007-048 I	COUNTY MCHENRY	TOTAL SHEETS 19	SHEET NO. 8
FED. ROAD DIST. NO. 1 ILLINOIS FED. AID PROJECT			CONTRACT NO. 60D38	



FILE NAME = c:\projects\dl01008\design_00.dgn	USER NAME = SMITHKL	DESIGNED -	REVISED - Δ 2/14/08 K.S.	STATE OF ILLINOIS DEPARTMENT OF TRANSPORTATION	EXISTING AND PROPOSED ROADWAY PLANS US 14 (IL 47 TO IL 176)			F.A.P. RTE. 305	SECTION 2007-048 I	COUNTY MCHENRY	TOTAL SHEETS 19	SHEET NO. 9
	PLOT SCALE = 50.0000' / IN.	CHECKED -	REVISED -					SCALE:	SHEET NO.	OF	SHEETS	STA.
PLOT DATE = 2/15/2008	DATE -	REVISED -	REVISED -	CONTRACT NO. 60D38								



FILE NAME =
 c:\projects\dl01008\design_0a.dgn

USER NAME = SMITHKL
 PLOT SCALE = 50,0000' / IN.
 PLOT DATE = 2/15/2008

DESIGNED -
 DRAWN -
 CHECKED -
 DATE -

REVISED - Δ 2/14/08 K.S.
 REVISED -
 REVISED -
 REVISED -

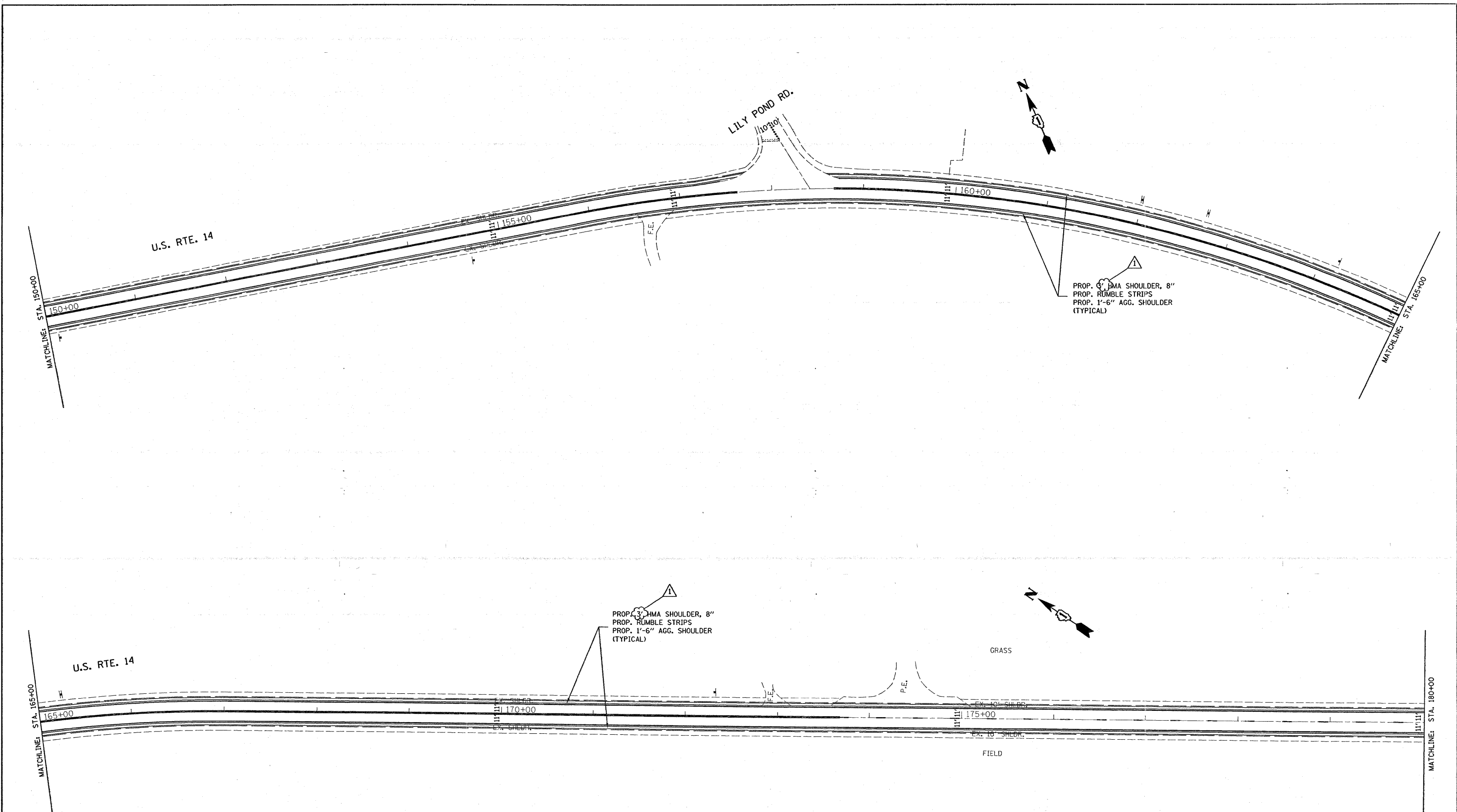
**STATE OF ILLINOIS
 DEPARTMENT OF TRANSPORTATION**

**EXISTING AND PROPOSED ROADWAY PLANS
 US 14 (IL 47 TO IL 176)**

SCALE: SHEET NO. OF SHEETS STA. TO STA.

F.A.P. RTE.	SECTION	COUNTY	TOTAL SHEETS	SHEET NO.
305	2007-048 I	MCHENRY	19	10
FED. ROAD DIST. NO. 1 ILLINOIS FED. AID PROJECT				

CONTRACT NO. 60D38



FILE NAME =
 c:\projects\dl0808\design_00.dgn

USER NAME = SMITHKL
 DRAWN -
 CHECKED -
 DATE -

DESIGNED -
 DRAWN -
 CHECKED -
 DATE -

REVISED - Δ 2/14/08 K.S.
 REVISED -
 REVISED -
 REVISED -

**STATE OF ILLINOIS
 DEPARTMENT OF TRANSPORTATION**

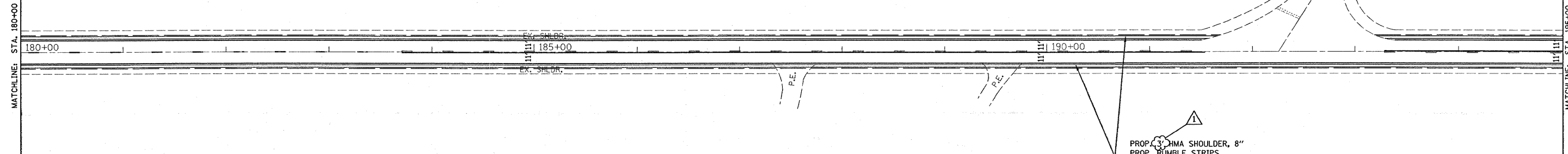
**EXISTING AND PROPOSED ROADWAY PLANS
 US 14 (IL 47 TO IL 176)**

SCALE: SHEET NO. OF SHEETS STA. TO STA.

F.A.P. RTE. 305	SECTION 2007-048 I	COUNTY MCHENRY	TOTAL SHEETS 19	SHEET NO. 11
FED. ROAD DIST. NO. 1 ILLINOIS FED. AID PROJECT				

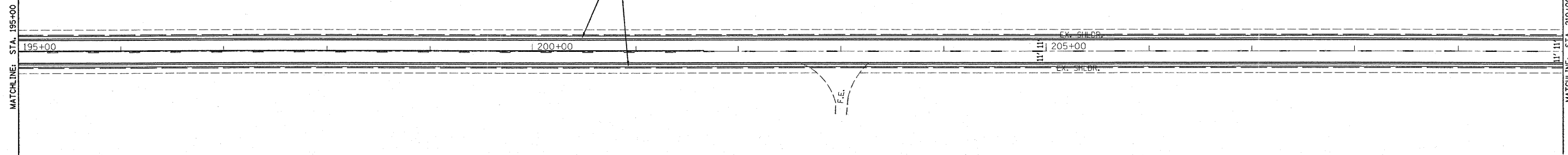
CONTRACT NO. 60D38

U.S. RTE. 14



PROP. 3" HMA SHOULDER, 8"
PROP. RUMBLE STRIPS
PROP. 1'-6" AGG. SHOULDER
(TYPICAL)

U.S. RTE. 14



PROP. 3" HMA SHOULDER, 8"
PROP. RUMBLE STRIPS
PROP. 1'-6" AGG. SHOULDER
(TYPICAL)

FILE NAME =
c:\projects\dl01008\design_00.dgn

USER NAME = SMITHKL
DRAWN -
PLOT SCALE = 50,0000 ' / IN.
PLOT DATE = 2/15/2008

DESIGNED -
CHECKED -
DATE -

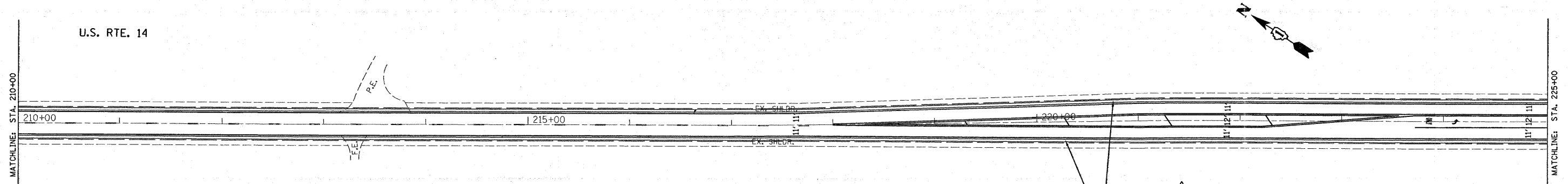
REVISED - Δ 2/14/08 K.S.
REVISED -
REVISED -
REVISED -

**STATE OF ILLINOIS
DEPARTMENT OF TRANSPORTATION**

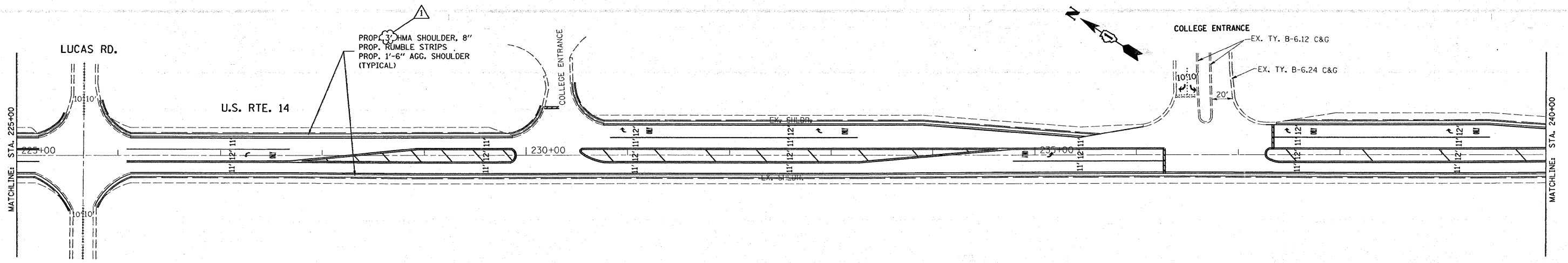
**EXISTING AND PROPOSED ROADWAY PLANS
US 14 (IL 47 TO IL 176)**

SCALE: SHEET NO. OF SHEETS STA. TO STA.

F.A.P. RTE. 305	SECTION 2007-048 I	COUNTY MCHENRY	TOTAL SHEETS 19	SHEET NO. 12
CONTRACT NO. 60D38				
FED. ROAD DIST. NO. 1 (ILLINOIS) FED. AID PROJECT				



PROP. 3" HMA SHOULDER, 8"
 PROP. RUMBLE STRIPS
 PROP. 1'-6" AGG. SHOULDER
 (TYPICAL)



PROP. 3" HMA SHOULDER, 8"
 PROP. RUMBLE STRIPS
 PROP. 1'-6" AGG. SHOULDER
 (TYPICAL)

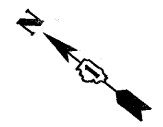
EX. TY. B-6.12 C&G
 EX. TY. B-6.24 C&G

FILE NAME = c:\projects\dl01008\design_ea.dgn	USER NAME = SMITHKL	DESIGNED -	REVISED - Δ 2/14/08 K.S.	STATE OF ILLINOIS DEPARTMENT OF TRANSPORTATION	EXISTING AND PROPOSED ROADWAY PLANS US 14 (IL 47 TO IL 176)				F.A.P. RTE. 305	SECTION 2007-048 I	COUNTY MCHENRY	TOTAL SHEETS 19	SHEET NO. 13	
	PLOT SCALE = 50,0000' / IN.	CHECKED -	REVISED -						SCALE:	SHEET NO.	OF	SHEETS	STA.	TO STA.
	PLOT DATE = 2/15/2008	DATE -	REVISED -		REVISED -	CONTRACT NO. 60D38								

U.S. RTE. 14

MATCHLINE STA. 240+00

MATCHLINE STA. 264+00



EX. SHLDR.
245+00
EX. SHLDR.

250+00

PROP. 3" HMA SHOULDER, 8"
PROP. RUMBLE STRIPS
PROP. 1'-6" AGG. SHOULDER
(TYPICAL)

U.S. RTE. 14

MATCHLINE STA. 255+00

MATCHLINE STA. 270+00



C.E.
C.E.

EX. SHLDR.
260+00
EX. SHLDR.

265+00

PROP. 3" HMA SHOULDER, 8"
PROP. RUMBLE STRIPS
PROP. 1'-6" AGG. SHOULDER
(TYPICAL)

FILE NAME =
c:\projects\dl01888\design_00.dgn

USER NAME = SMITHKL
DRAWN -
PLOT SCALE = 50.0000' / IN.
CHECKED -
PLOT DATE = 2/15/2008
DATE -

DESIGNED -
DRAWN -
CHECKED -
DATE -

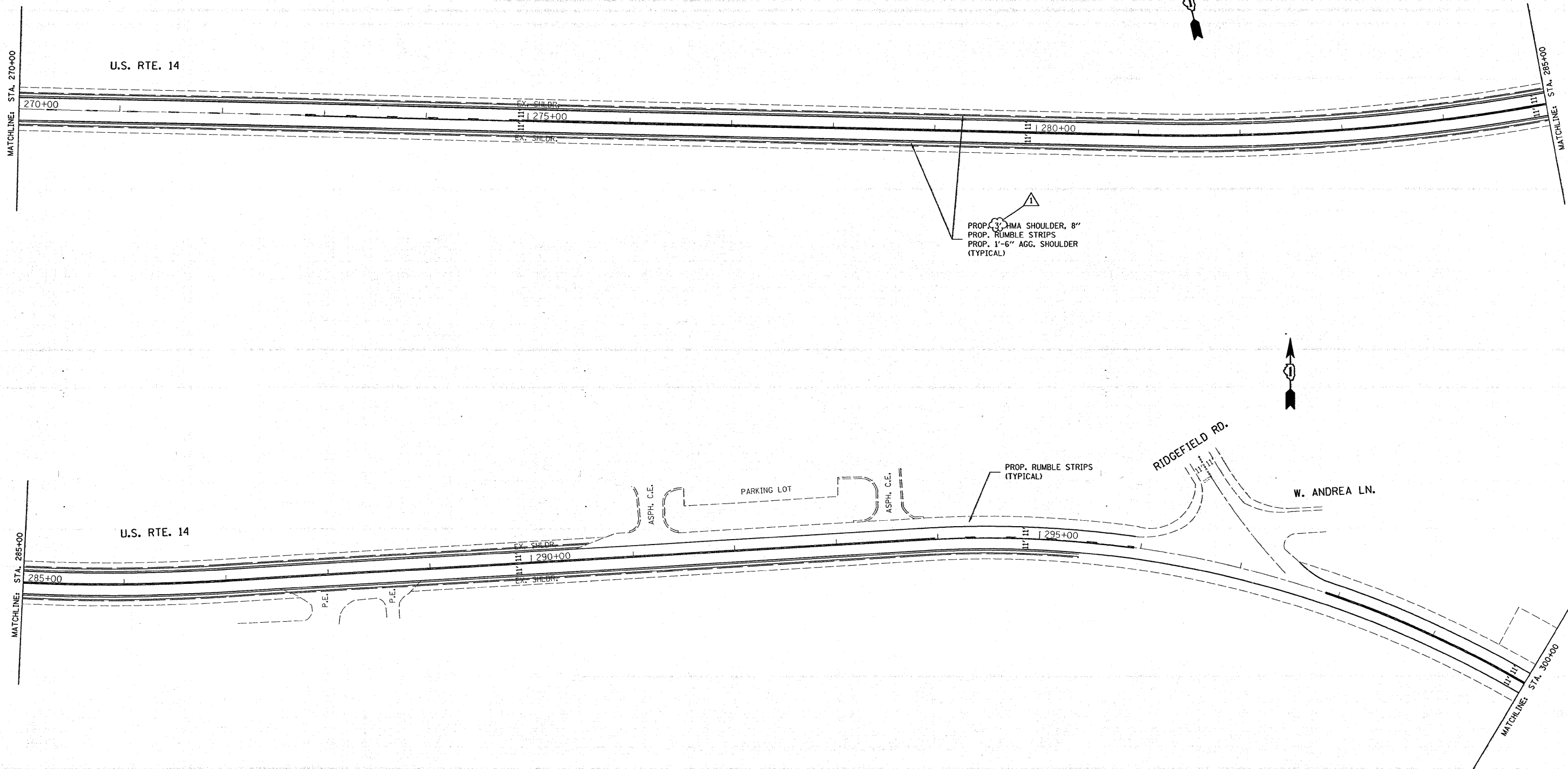
REVISED - Δ 2/14/08 K.S.
REVISED -
REVISED -
REVISED -

STATE OF ILLINOIS
DEPARTMENT OF TRANSPORTATION

EXISTING AND PROPOSED ROADWAY PLANS
US 14 (IL 47 TO IL 176)

SCALE: SHEET NO. OF SHEETS STA. TO STA.

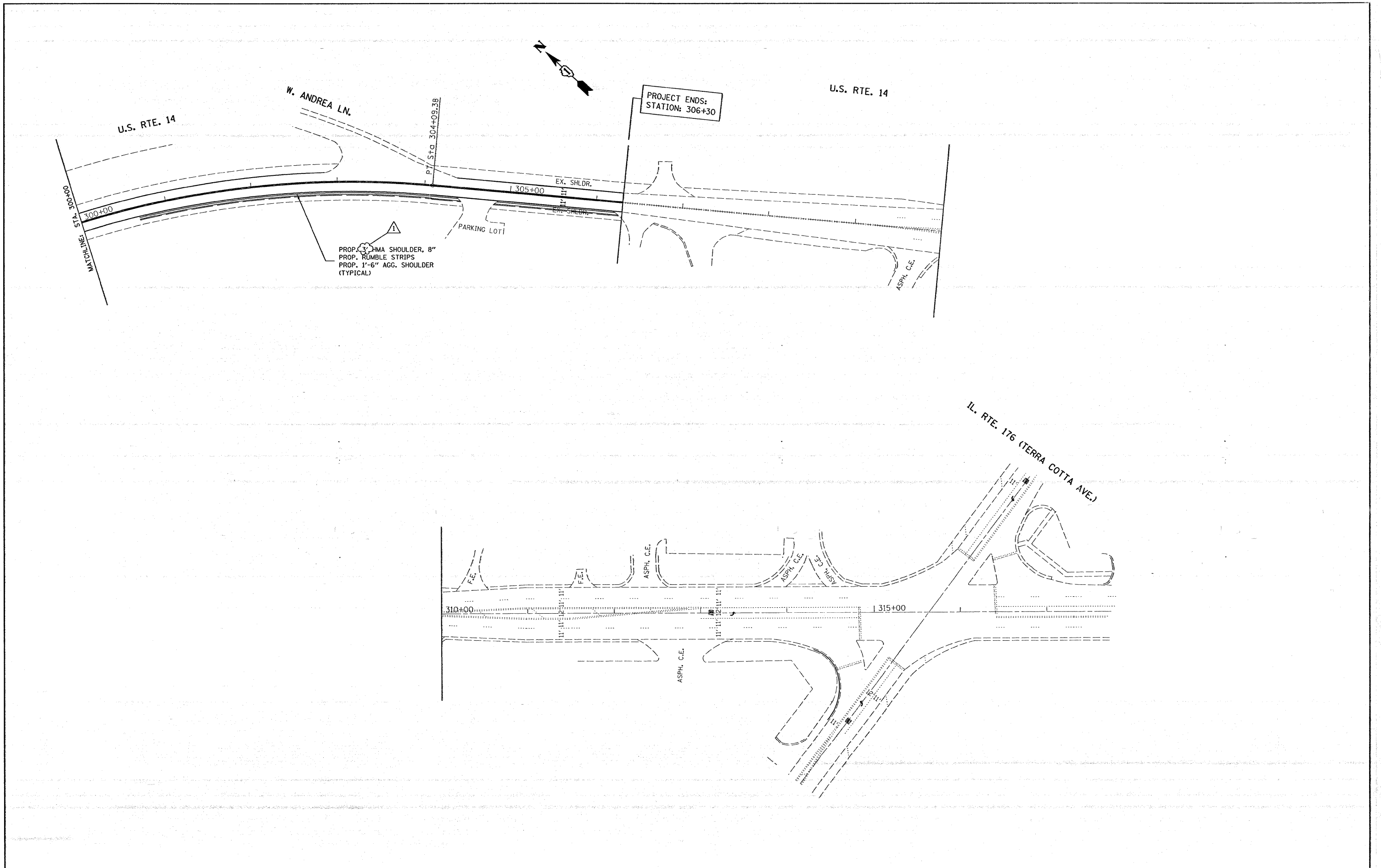
F.A.P. RTE. 305	SECTION 2007-048 I	COUNTY MCHENRY	TOTAL SHEETS 19	SHEET NO. 14
CONTRACT NO. 60D38				
FED. ROAD DIST. NO. 1 ILLINOIS FED. AID PROJECT				



PROP. 3" HMA SHOULDER, 8"
 PROP. RUMBLE STRIPS
 PROP. 1'-6" AGG. SHOULDER
 (TYPICAL)

PROP. RUMBLE STRIPS
 (TYPICAL)

FILE NAME = c:\projects\dl01008\design_ea.dgn	USER NAME = SMITHKL	DESIGNED -	REVISED - Δ 2/14/08 K.S.	STATE OF ILLINOIS DEPARTMENT OF TRANSPORTATION	EXISTING AND PROPOSED ROADWAY PLANS US 14 (IL 47 TO IL 176)				F.A.P. RTE. 305	SECTION 2007-048 I	COUNTY MCHENRY	TOTAL SHEETS 19	SHEET NO. 15
	PLOT SCALE = 50,0000' / IN.	CHECKED -	REVISED -		SCALE:	SHEET NO.	OF SHEETS	STA.	TO STA.	CONTRACT NO. 60D38			
PLOT DATE = 2/15/2008	DATE -	REVISED -							FED. ROAD DIST. NO. 1 ILLINOIS FED. AID PROJECT				



FILE NAME = c:\projects\dl1008\design_00.dgn	USER NAME = SMITHKL	DESIGNED -	REVISED - Δ 2/14/08 K.S.	STATE OF ILLINOIS DEPARTMENT OF TRANSPORTATION	EXISTING AND PROPOSED ROADWAY PLANS US 14 (IL 47 TO IL 176)		F.A.P. RTE. 305	SECTION 2007-048 I	COUNTY MCHENRY	TOTAL SHEETS 19	SHEET NO. 16
	PLOT SCALE = 50,0000' / IN.	CHECKED -	REVISED -				SCALE:	SHEET NO. OF SHEETS	STA. TO STA.	FED. ROAD DIST. NO. 1 [ILLINOIS] FED. AID PROJECT CONTRACT NO. 60D38	
PLOT DATE = 2/15/2008	DATE -	REVISED -	REVISED -								