

F.A. RTE.	SECTION	COUNTY	TOTAL SHEETS	SHEET NO.
			133	61

STA. TO STA.  
FED. ROAD DIST. NO. ILLINOIS FED. AID PROJECT

- CONTRACTOR TO PLACE 3/4" THICK EXPANSION JOINT FILLER AROUND VALVE BOXES AND FIRE HYDRANT BARREL SECTIONS LOCATED IN CONCRETE.
- ALL 8" AND 12" WATER MAIN TO BE INSTALLED WITH TRENCH BACKFILL

LEGEND

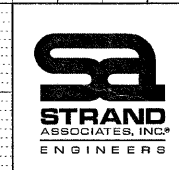
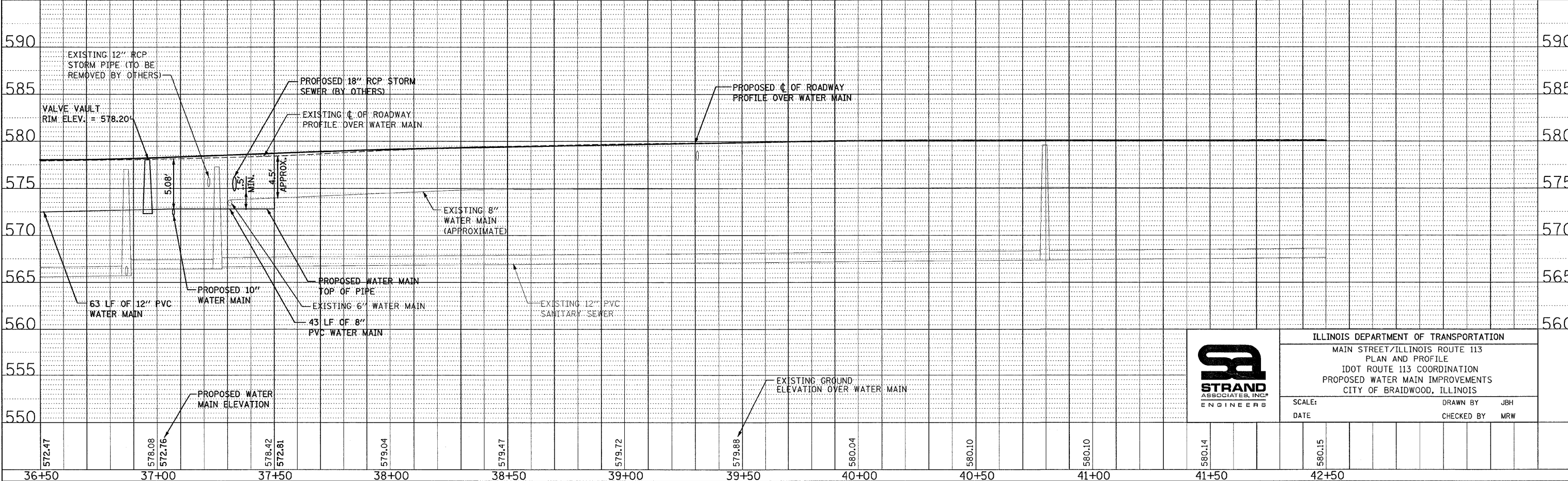
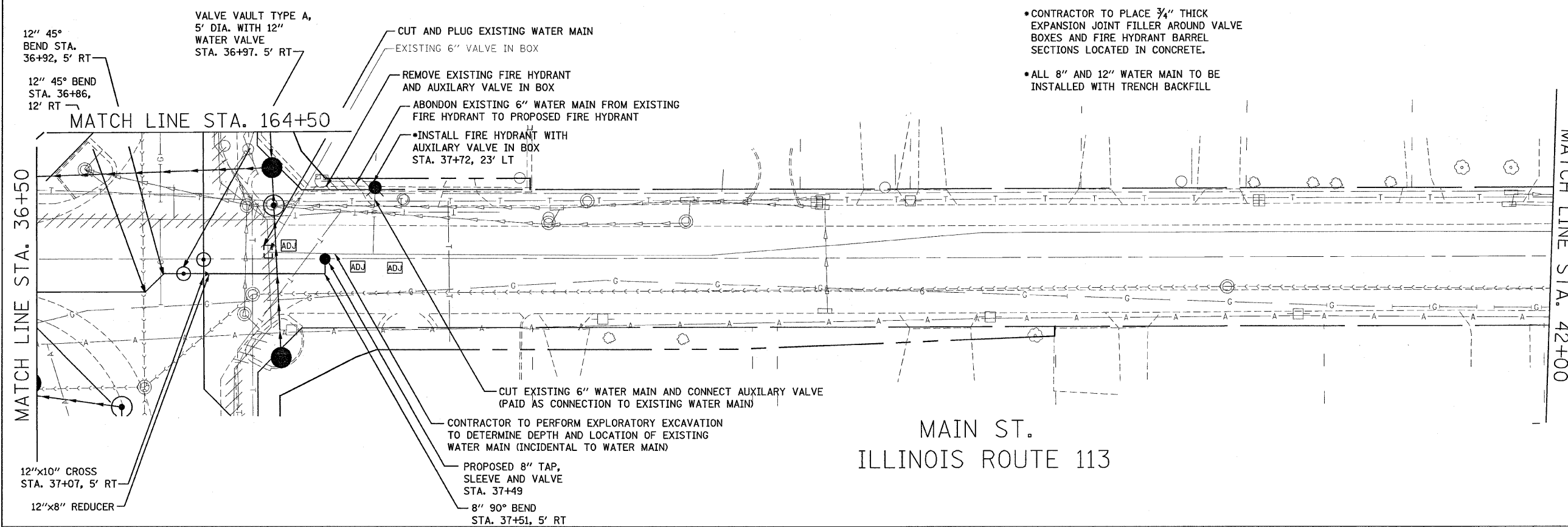
	VALVE VAULT
	WATER VALVE
	FIRE HYDRANT
	WATER MAIN
	WATER MAIN IN STEEL CASING
	PLUG AND STUB OF WATER MAIN
	CURB REMOVAL
	ADJUST WATER VALVE OR MANHOLE
	BORE AND JACK OF WATER MAIN
	BORE AND JACK PUSH OR RECEIVING TRENCH



PLAN	DATE	BY

PROFILE	DATE	BY

PLOT DATE = 3/2/2007  
FILE NAME = M:\Vennal\113\Main\1007 02.dgn  
PLOT SCALE = 20,0000 / IN.  
USER NAME = jbrigo



ILLINOIS DEPARTMENT OF TRANSPORTATION  
MAIN STREET/ILLINOIS ROUTE 113  
PLAN AND PROFILE  
IDOT ROUTE 113 COORDINATION  
PROPOSED WATER MAIN IMPROVEMENTS  
CITY OF BRAIDWOOD, ILLINOIS

SCALE: DATE  
DRAWN BY: JBH  
CHECKED BY: MRW