

GENERAL NOTES

STATE OF ILLINOIS
DEPARTMENT OF TRANSPORTATION

E	F.A.P. ROUTE NO.	SECTION	COUNTY	LENS	SHEET	SHEET NO. 2 89 SHEETS
	786	109 BR	La Salle	351	202	
	FED. ROAD DIST. NO. 7	ILLINOIS	FED. AID PROJECT-			

Contract # 66607

Fasteners shall be AASHTO M164 Type 1, mechanically galvanized bolts (in painted areas and M164 Type 3 in unpainted areas). Bolts 7/8 in. ϕ , holes 15/16 in. ϕ , unless otherwise noted.

Calculated weight of Structural Steel Gr.50 = 4,024,470 Lbs

Calculated weight of Structural Steel Gr.70 = 411,330 Lbs

All structural steel shall be AASHTO M 270 Grade 50W except top and bottom flanges over Piers in Segment 2 which shall be AASHTO M 270 HPS70W.

No field welding is permitted except as specified in the contract documents.

The existing structural steel coating contains lead. The Contractor shall take appropriate precautions to deal with the presence of lead on this project.

Reinforcement bars shall conform to the requirements of ASTM A 706 Gr 60 (IL Modified). See Special Provisions

Reinforcement bars designated (E) shall be epoxy coated.

Bearing seat surfaces shall be constructed or adjusted to their designated elevations within a tolerance of 1/8 inch (0.01 ft.). Adjustment shall be made either by grinding the surface or by shimming the bearings.

Concrete Sealer shall be applied to the designated areas of the piers and abutments.

Structural steel shall only be painted for a distance of 10 ft. each way from all piers & abutments. All structural steel shall be cleaned as specified in the Special Provision for "Surface Preparation and Painting Requirements for Weathering Steel".

The Contractor shall drive test piles to 110% of the nominal required bearing specified in production locations at substructures specified or approved by the Engineer before ordering the remainder of piles.

The Contractor shall obtain a construction permit from the Illinois Department of Natural Resources (IDNR), Office of Water Resources for any temporary construction activity placed in the water except cofferdams. This shall include the placement of material for run-arounds, causeways, etc. Any permit application by the Contractor shall refer to the IDNR permit number as shown in the contract plans.

All exposed structural steel of the bearings shall be cleaned and shop painted as specified in the Special Provision for "Surface Preparation and Painting Requirements for Weathering Steel".

The embankment configuration shown shall be the minimum that must be placed and compacted prior to construction of the abutments.

Sloped wall shall be reinforced with welded wire fabric, 6" x 6" - W4.0 x W4.0, weighing 58 lbs. per 100 sq. ft.

The Contractor is alerted that the camber and dead load deflection values shown within the drawings were developed based on the deck pouring sequence shown on Sheet 23. Any deviation from this pouring sequence may require changes to the camber, dimensions and elevations derived from the dead load deflections. If the Contractor elects to vary from the pouring sequence shown on the Plans, an evaluation of the structure shall be performed by an Illinois Licensed Structural Engineer retained by the Contractor. Calculations and any revised details shall be submitted to the Engineer for review and approval.

The erection of the structural steel shall be accomplished by a steel erection contractor or sub-contractor certified as an Advanced Certified Steel Erector (ASCE) by AISC. See special provision for "Erection of Complex Steel Structures."

Slipforming of the east parapet is not allowed because of embedded conduit & light pole blisters. A protective shield system shall be provided in span 10.

INDEX OF STRUCTURAL SHEETS

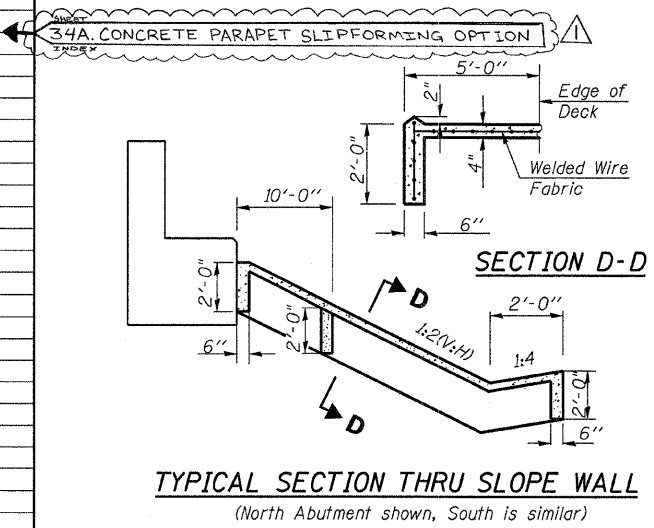
NO	SHEETS NAME
1.	GENERAL PLAN & ELEVATION
2.	GENERAL NOTES & BILL OF MATERIAL
3.	SUBSTRUCTURE LAYOUT
4.	TOP OF SLAB ELEVATIONS UNIT 1 (1 OF 2)
5.	TOP OF SLAB ELEVATIONS UNIT 1 (2 OF 2)
6.	TOP OF SLAB ELEVATIONS UNIT 2 (1 OF 6)
7.	TOP OF SLAB ELEVATIONS UNIT 2 (2 OF 6)
8.	TOP OF SLAB ELEVATIONS UNIT 2 (3 OF 6)
9.	TOP OF SLAB ELEVATIONS UNIT 2 (4 OF 6)
10.	TOP OF SLAB ELEVATIONS UNIT 2 (5 OF 6)
11.	TOP OF SLAB ELEVATIONS UNIT 2 (6 OF 6)
12.	TOP OF SLAB ELEVATIONS UNIT 3 (1 OF 3)
13.	TOP OF SLAB ELEVATIONS UNIT 3 (2 OF 3)
14.	TOP OF SLAB ELEVATIONS UNIT 3 (3 OF 3)
15.	TOP OF SLAB ELEVATIONS UNIT 4 (1 OF 2)
16.	TOP OF SLAB ELEVATIONS UNIT 4 (2 OF 2)
17.	TOP OF SLAB ELEVATIONS N. APPR. PAVT.
18.	TOP OF SLAB ELEVATIONS S. APPR. PAVT.
19.	SUPERSTRUCTURE PLAN UNIT 1
20.	DECK CROSS-SECTION UNIT 1
21.	PARAPET DETAILS UNIT 1
22.	SUPERSTRUCTURE DETAILS UNIT 1
23.	SUPERSTRUCTURE PLAN UNIT 2
24.	DECK CROSS-SECTION UNIT 2
25.	PARAPET DETAILS UNIT 2
26.	SUPERSTRUCTURE DETAILS UNIT 2
27.	SUPERSTRUCTURE PLAN UNIT 3
28.	DECK CROSS-SECTION UNIT 3
29.	PARAPET DETAILS UNIT 3
30.	SUPERSTRUCTURE DETAILS UNIT 3
31.	* SUPERSTRUCTURE PLAN-UNIT 4
32.	* PARAPET DETAILS UNIT 4
33.	* SUPERSTRUCTURE DETAILS UNIT 4
34.	GENERAL SUPERSTRUCTURE DETAILS
35.	DRAINAGE SCUPPER DS-11
36.	DRAINAGE SCUPPER DS-12
37.	BICYCLE RAILING
38.	PERFORMED JOINT STRIP SEAL
39.	FINGER PLATE EXP. JOINT AT PIER 2
40.	FINGER PLATE EXP. JOINT AT PIER 5
41.	FINGER PLATE EXP. JOINT DETAILS 1
42.	FINGER PLATE EXP. JOINT DETAILS 2
43.	FRAMING PLAN UNIT 1
44.	CAMBER DIAGRAM UNIT 1
45.	FRAMING PLAN UNIT 2-1
46.	FRAMING PLAN UNIT 2-2
47.	FRAMING PLAN UNIT 2-3
48.	CAMBER DIAGRAM UNIT 2
49.	FRAMING PLAN UNIT 3-1
50.	FRAMING PLAN UNIT 3-2
51.	CAMBER DIAGRAM UNIT 3
52.	* FRAMING PLAN UNIT 4
53.	* STRUCTURAL STEEL DETAILS UNIT 4
54.	CROSS FRAME DETAILS
55.	NAVIGATION LIGHT SUPPORT DETAILS
56.	ELASTOMERIC BEARING ASSEMBLY 1
57.	ELASTOMERIC BEARING ASSEMBLY 2
58.	ELASTOMERIC BEARING ASSEMBLY 3
59.	EXPANSION POT BEARING ASSEMBLIES
60.	FIXED POT BEARING ASSEMBLIES

INDEX OF STRUCTURAL SHEETS CONT.

NO	SHEETS NAME
61.	NORTH ABUTMENT
62.	NORTH ABUTMENT DETAILS 1
63.	NORTH ABUTMENT DETAILS 2
64.	SOUTH ABUTMENT
65.	SOUTH ABUTMENT DETAILS 1
66.	SOUTH ABUTMENT DETAILS 2
67.	PIER 1
68.	PIER 2
69.	PIER 2 DETAILS
70.	PIER 3
71.	PIER 3 DETAILS
72.	PIER 4
73.	PIER 4 DETAILS
74.	PIER 5
75.	PIER 5 DETAILS
76.	PIER 6
77.	PIER 7
78.	PIER 8
79.	PIER 8 DETAILS
80.	PIER 9
81.	STEEL H-PILES DETAILS
82.	BAR SPlicer ASSEMBLY DETAIL
83.	BORING LOG 1
84.	BORING LOG 2
85.	BORING LOG 3
86.	BORING LOG 4
87.	BORING LOG 5
88.	BORING LOG 6
89.	BORING LOG 7

BRIDGE TOTAL BILL OF MATERIAL

ITEM	UNIT	QUANTITY
POROUS GRANULAR EMBANKMENT, SPECIAL	CU YD	228
BRIDGE APPROACH PAVEMENT (SPECIAL)	SQ YD	284
REMOVAL OF EXISTING STRUCTURES	L SUM	1
PROTECTIVE SHIELD	SQ YD	482
STRUCTURE EXCAVATION	CU YD	1,206
COFFERDAM EXCAVATION	CU YD	1,195
COFFERDAM PIER 3	EACH	1
COFFERDAM PIER 4	EACH	1
CONCRETE STRUCTURES	CU YD	2,189
CONCRETE SUPERSTRUCTURE	CU YD	2,254.3
BRIDGE DECK GROOVING	SQ YD	5,761
CONCRETE ENCASEMENT	CU YD	6
PROTECTIVE COAT	SQ YD	7,539
FURNISHING AND ERECTING STRUCTURAL STEEL	L SUM	1
STUD SHEAR CONNECTORS	EACH	16,731
REINFORCEMENT BAR	POUND	52,580
REINFORCEMENT BARS, EPOXY COATED	POUND	940,300
BAR SPlicERS FOR #5 BAR	EACH	84
MECHANICAL SPLICE	EACH	532
BICYCLE RAILING	FOOT	1,732
PARAPET RAILING	FOOT	1,762
SLOPE WALL 4 INCH	SQ YD	475
FURNISHING STEEL PILES HP12X74	FOOT	5,108
DRIVING PILES	FOOT	5,108
TEST PILE STEEL HP12X74	EACH	9
PILE SHOES	EACH	150
NAME PLATES	EACH	1
DRILLED SHAFT IN ROCK	CU YD	230
PERFORMED JOINT STRIP SEAL	FOOT	139
FINGER PLATE EXPANSION JOINT, 4"	FOOT	37.5
FINGER PLATE EXPANSION JOINT, 5"	FOOT	37.5
FABRIC REINFORCED ELASTOMERIC TROUGH	FOOT	80
ELASTOMERIC BEARING ASSEMBLY, TYPE I	EACH	42
ELASTOMERIC BEARING ASSEMBLY, TYPE II	EACH	12
ELASTOMERIC BEARING ASSEMBLY, TYPE III	EACH	6
ANCHOR BOLTS, 1 IN	EACH	98
ANCHOR BOLTS, 1-1/4 IN	EACH	14
ANCHOR BOLTS, 1-1/2 IN	EACH	50
CONCRETE SEALER	SQ FT	2,796
GEOCOMPOSITE WALL DRAIN	SQ YD	151
PIPE UNDERDRAIN FOR STRUCTURES, 4 IN	FOOT	250
DRAINAGE SCUPPERS, DS-12	EACH	10
DRAINAGE SCUPPERS, DS-11	EACH	10
HIGH LOAD MULTI-ROTATION BEARING, FIXED 800K	EACH	6
HIGH LOAD MULTI-ROTATION BEARING, GUIDED EXPANSION, 800K	EACH	6



WATERWAY INFORMATION TABLE

Drainage Area: 8,259 sq. miles		Existing Low Grade Elev. = 504.18 feet @ Sta. 67+00		Proposed Low Grade Elev. = 517 feet @ Sta. 88+94	
Flood	Frequency (Yr)	Discharge (cfs)	Waterway Opening (Sq.Ft.)		Headwater Elev. (ft)
			Exist.	Prop.	
DESIGN	50	98000	12318	12636	491.58
BASE	100	106000	14218	14435	494.13
OVERTOPPING			14874	15501	494.85
MAX CALC	500	130000	16846	18116	496.84

STATION 79+04.42
BUILT BY
STATE OF ILLINOIS
IL. 170 F.A.P. 786
LOADING HS20
STRUCTURE NO. 050-0246

NAME PLATE
See Std. 515001

REVISD 2/27/08

**GENERAL NOTES AND
BILL OF MATERIAL
IL. 170 F.A.P. 786 OVER
ILLINOIS RIVER AT SENECA
PUBLIC WATERS
LA SALLE COUNTY, SECTION 109 BR
STATION 79+04.42
STRUCTURE NO. 050-0246**

DESIGNED - CLS
CHECKED - RJC
DRAWN - JHR
CHECKED - RJC