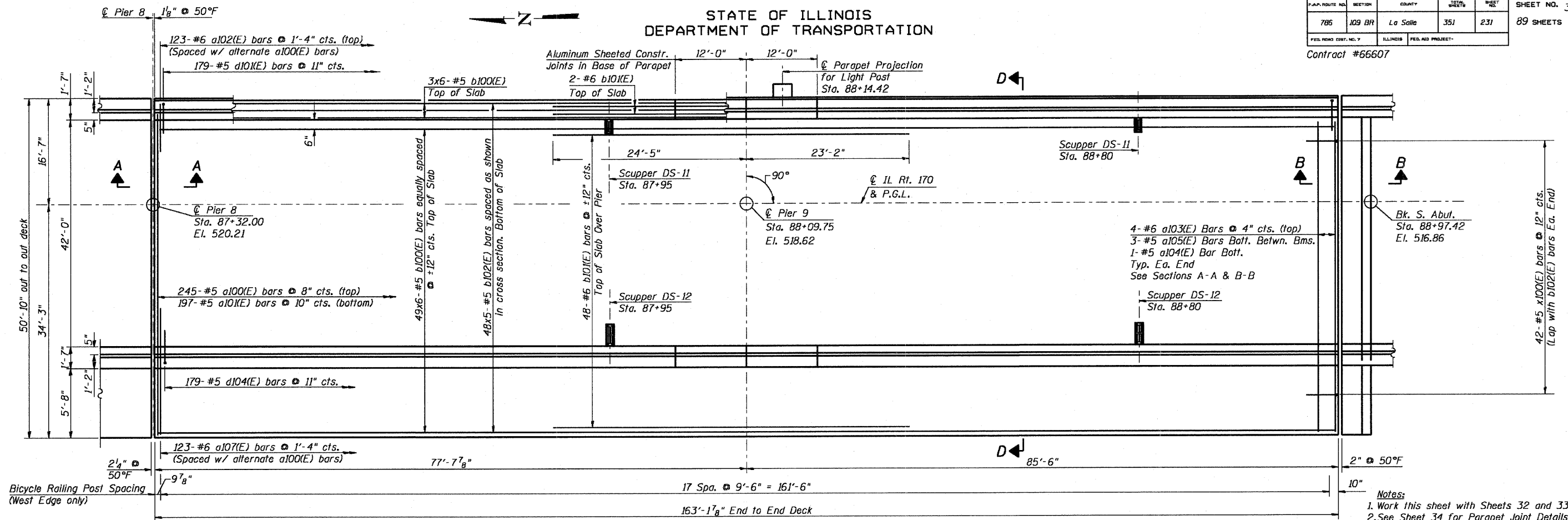
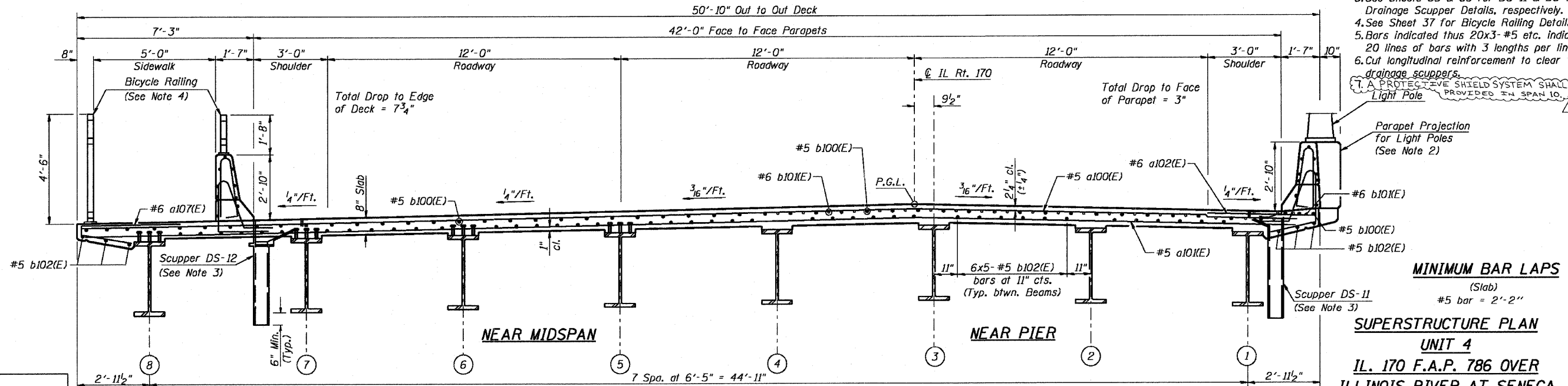


STATE OF ILLINOIS
DEPARTMENT OF TRANSPORTATION

F.A.P. ROUTE NO.	SECTION	COUNTY	SHEETS	SHEET NO.
786	109 BR	La Salle	351	231
SHEET NO. 31 89 SHEETS				
FED. ROAD DIST. NO. 7	ILLINOIS	FED. AID PROJECT		
			Contract #66607	



- Notes:**
1. Work this sheet with Sheets 32 and 33.
 2. See Sheet 34 for Parapet Joint Details, Parapet Projection Details/Reinforcement, & Scupper Reinforcement Details.
 3. See Sheets 35 & 36 for DS-11 & DS-12 Drainage Scupper Details, respectively.
 4. See Sheet 37 for Bicycle Railing Details.
 5. Bars indicated thus 20x3-#5 etc. indicates 20 lines of bars with 3 lengths per line.
 6. Cut longitudinal reinforcement to clear drainage scuppers.
 7. A PROTECTIVE SHIELD SYSTEM SHALL BE PROVIDED IN SPAN 10.



DESIGNED	RKM
CHECKED	MTH
DRAWN	AJF
CHECKED	MTH

REVISD 2/27/08

