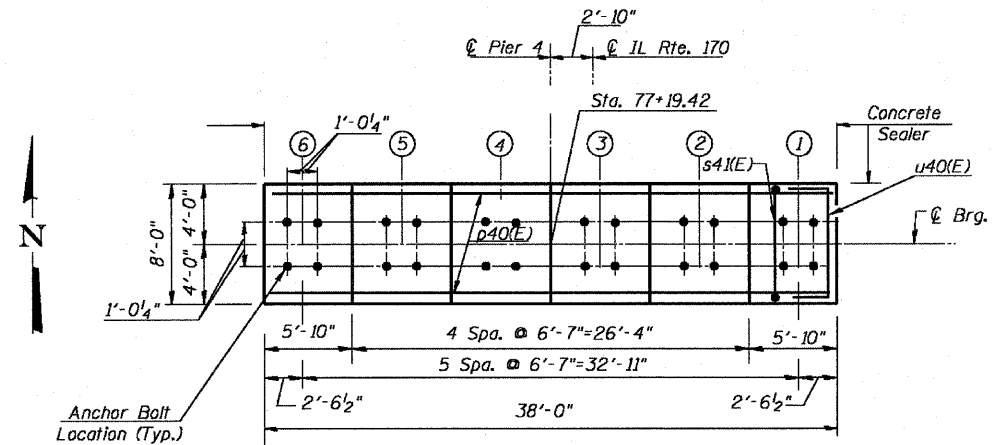
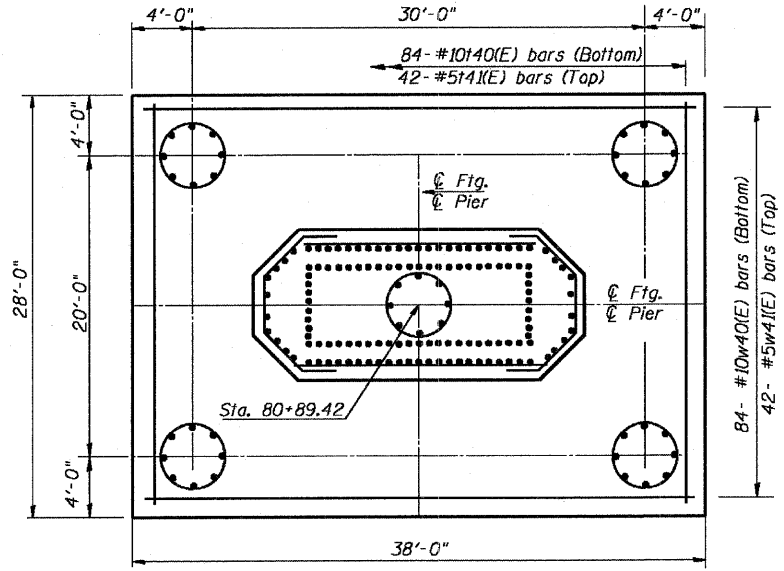


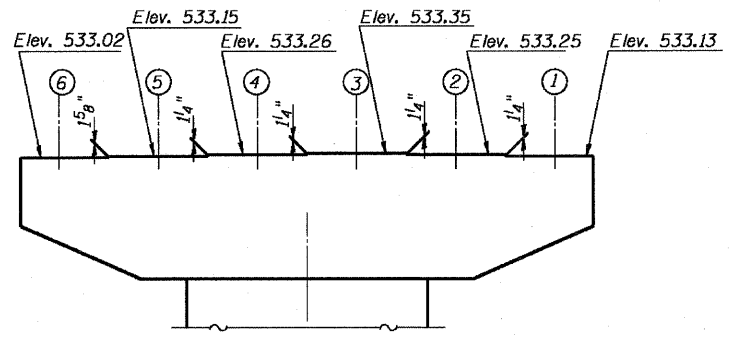
Contract # 66607



TOP PLAN



FOOTING PLAN  
N.T.S.



TOP OF PIER  
(Showing Steps Elevations)

**VESSEL COLLISION FORCES**

**Load Case 1**  
Static Load = 2800K  
Elevation = 500.13 ft (Barge Bow Rake 6' above MHW)  
Direction = Parallel to Pier & Navigational Channel

**Load Case 2**  
Static Load = 1400K  
Elevation = 500.13 ft (Barge Bow Rake 6' above MHW)  
Direction = Perpendicular to Pier & Navigational Channel

Note: Load Cases are considered independently  
Load Combination 1.0X1.0D+1.0P+1.0B+1.0SF+1.0E)

DESIGNED - RJC
CHECKED - DEV
DRAWN - JHR
CHECKED - DEV

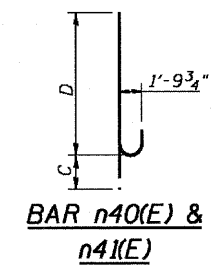
**BILL OF MATERIAL**

Bar	No.	Size	Length	Shape
n40(E)	12	#6	37'-8"	—
n41(E)	2	#6	32'-8"	—
n42(E)	50	#6	15'-8"	—
n43(E)	76	#6	16'-0"	—
n44(E)	2	#6	27'-4"	—
n45(E)	9	#5	19'-5"	—
n40(E)	66	#14	14'-3"	—
n41(E)	64	#14	17'-3"	—
p40(E)	20	#14	37'-8"	—
p41(E)	6	#9	37'-10"	—
s40(E)	64	#6	27'-0"	—
s41(E)	100	#6	14'-6"	—
s42(E)	50	#6	12'-4"	—
s43(E)	76	#6	17'-8"	—
s44(E)	19	#4	12'-8"	—
s45(E)	175	#5	7'-10"	—
s46(E)	266	#5	10'-11"	—
s47(E)	36	#6	16'-0"	—
sp40	5	#5	1201'-0"	—
140(E)	84	#10	27'-8"	—
141(E)	42	#5	27'-8"	—
u40(E)	12	#6	13'-4"	—
v40(E)	66	#14	34'-6"	—
v41(E)	64	#14	31'-6"	—
v42(E)	32	#14	41'-0"	—
v43(E)	30	#14	44'-0"	—
v44(E)	32	#14	28'-8"	—
v45(E)	30	#14	25'-8"	—
v46	100	#11	40'-3"	—
w40(E)	84	#10	37'-8"	—
w41(E)	42	#5	37'-8"	—
Cofferdam Excavation	Cu. Yd.		617	
Concrete Structures	Cu. Yd.		806	
Reinforcement Bars, Epoxy Coated	Pound		132,070	
Reinforcement Bars	Pound		27,660	
Drilled Shaft in Rock	Cu. Yd.		122	
Mechanical Splice	Ea.		192	

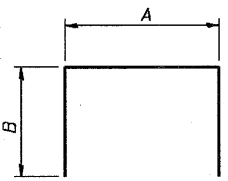
**C & D DIMENSIONS**

Bar	C	D
n40(E)	2'-3"	12'-0"
n41(E)	2'-3"	15'-0"

**BARS nxx(E)**



BAR n40(E) & n41(E)

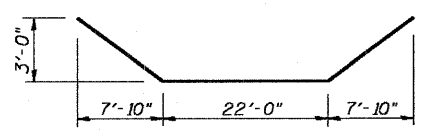


BARS sxx(E)

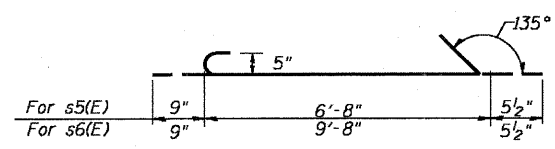
**A & B DIMENSIONS**

Bar	A	B
s41(E)	5'-2"	4'-8"
s42(E)	6'-8"	2'-10"
s44(E)	7'-8"	2'-6"
s47(E)	5'-2"	5'-5"

BARS sxx(E)



BAR p41(E)



BAR s45(E) and s46(E)

REVISED 2/27/08 STRUCTURE NO. 050-0246

**PIER 4 DETAILS**  
IL. 170 F.A.P. 786 OVER  
ILLINOIS RIVER AT SENECA  
PUBLIC WATERS  
LA SALLE COUNTY, SECTION 109 BR  
STATION 79+04.42  
STRUCTURE NO. 050-0246