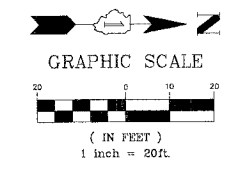


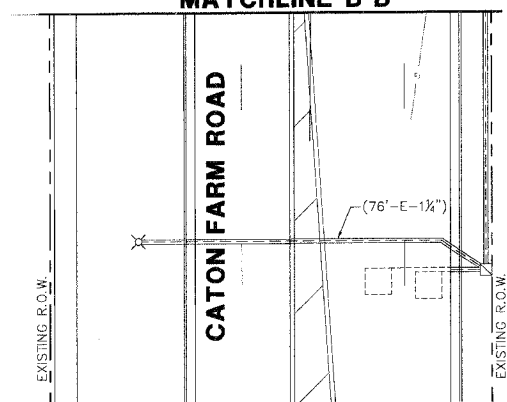
F.A.U. RTE.	SECTION	COUNTY	TOTAL SHEETS	SHEET NO.
326	05-00395-00-TL	WILL	31	23
STA.	TO STA.			
FED. ROAD DIST. NO.	ILLINOIS	FED. AID PROJECT		
CONTRACT NO: 83992				

TRAFFIC SIGNAL LEGEND

	PROPOSED	EXISTING
CONTROLLER		
SERVICE INSTALLATION		
SIGNAL HEAD		
SIGNAL HEAD WITH BACKPLATE		
SIGNAL HEAD, PEDESTRIAN		
SIGNAL POST		
MAST ARM ASSEMBLY AND POLE, STEEL		
MAST ARM ASSEMBLY AND POLE, ALUMINUM		
COMBINATION MAST ARM ASSEMBLY AND POLE, STEEL WITH LUMINAIRE		
UNIT DUCT		
COMMON TRENCH		
HANDHOLE		
HEAVY DUTY HANDHOLE		
DOUBLE HANDHOLE		
G.S. CONDUIT IN TRENCH (T) OR PUSHED (P)		
PEDESTRIAN PUSHBUTTON DETECTOR		
DETECTOR LOOP		
CAST IRON JUNCTION BOX		
EMERGENCY VEHICLE LIGHT DETECTOR		
CONFIRMATION BEACON		
SIGNAL HEAD OPTICALLY PROGRAMMED		
CONDUIT SPLICE		
WOOD POLE		
RACEWAY FOR MAGNETIC DETECTOR, TYPE I OR TYPE II		
VEHICLE DETECTOR, NON COMPENSATED MAGNETIC TYPE		
RAILROAD CONTROL CABINET		
TELEPHONE CONNECTION		
ILLUMINATED SIGN "NO LEFT TURN"		
ILLUMINATED SIGN "NO RIGHT TURN"		
RADIO ANTENNA		

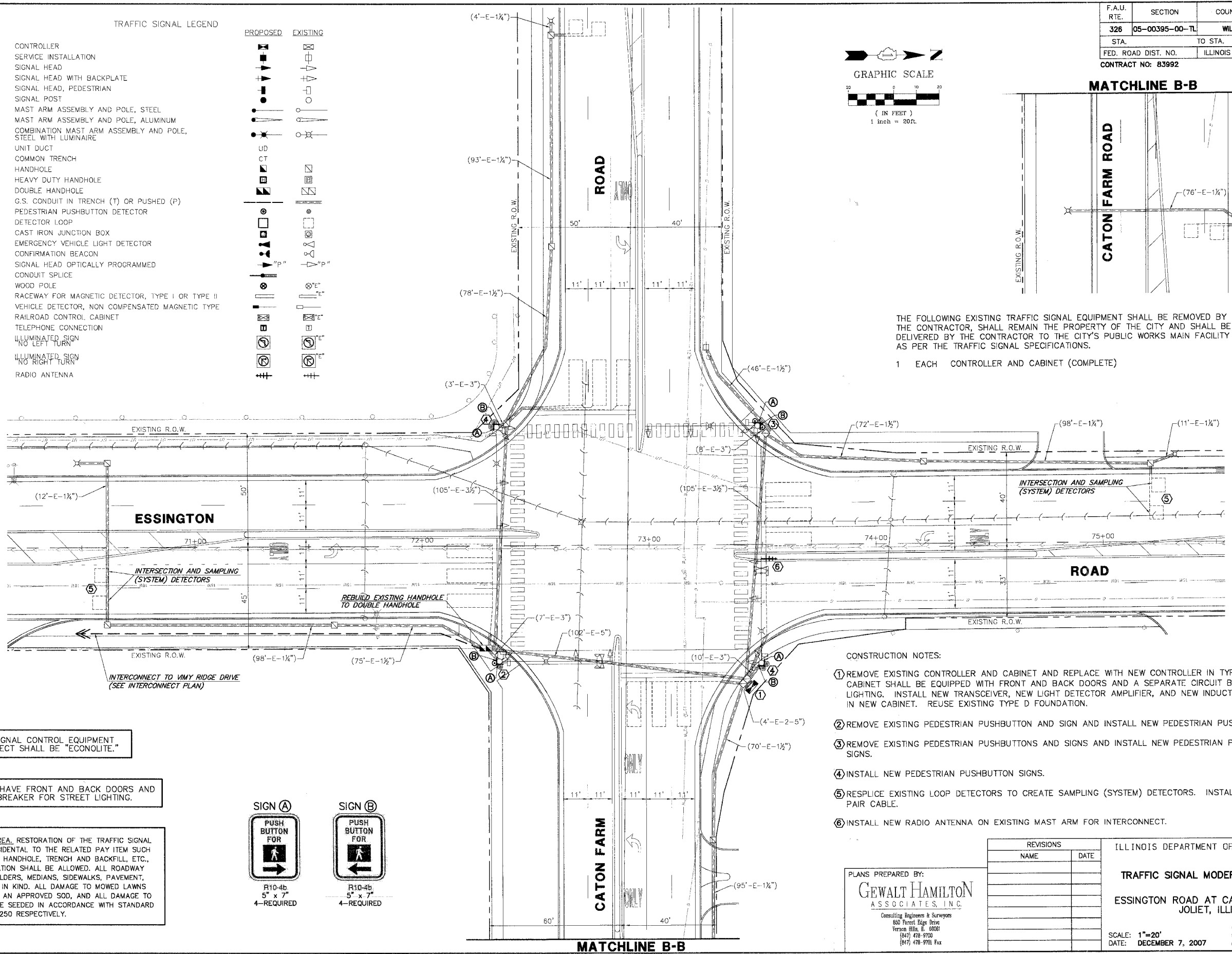


MATCHLINE B-B



THE FOLLOWING EXISTING TRAFFIC SIGNAL EQUIPMENT SHALL BE REMOVED BY THE CONTRACTOR, SHALL REMAIN THE PROPERTY OF THE CITY AND SHALL BE DELIVERED BY THE CONTRACTOR TO THE CITY'S PUBLIC WORKS MAIN FACILITY AS PER THE TRAFFIC SIGNAL SPECIFICATIONS.

1 EACH CONTROLLER AND CABINET (COMPLETE)



INTERSECTION AND SAMPLING (SYSTEM) DETECTORS

REBUILD EXISTING HANDHOLE TO DOUBLE HANDHOLE

INTERCONNECT TO VIMY RIDGE DRIVE (SEE INTERCONNECT PLAN)

CONSTRUCTION NOTES:

- REMOVE EXISTING CONTROLLER AND CABINET AND REPLACE WITH NEW CONTROLLER IN TYPE IV CABINET. THE CABINET SHALL BE EQUIPPED WITH FRONT AND BACK DOORS AND A SEPARATE CIRCUIT BREAKER FOR STREET LIGHTING. INSTALL NEW TRANSCEIVER, NEW LIGHT DETECTOR AMPLIFIER, AND NEW INDUCTIVE LOOP DETECTORS IN NEW CABINET. REUSE EXISTING TYPE D FOUNDATION.
- REMOVE EXISTING PEDESTRIAN PUSHBUTTON AND SIGN AND INSTALL NEW PEDESTRIAN PUSHBUTTON AND SIGN.
- REMOVE EXISTING PEDESTRIAN PUSHBUTTONS AND SIGNS AND INSTALL NEW PEDESTRIAN PUSHBUTTONS AND SIGNS.
- INSTALL NEW PEDESTRIAN PUSHBUTTON SIGNS.
- RESPICE EXISTING LOOP DETECTORS TO CREATE SAMPLING (SYSTEM) DETECTORS. INSTALL NEW NO. 14, PAIR CABLE.
- INSTALL NEW RADIO ANTENNA ON EXISTING MAST ARM FOR INTERCONNECT.

THE TRAFFIC SIGNAL CONTROL EQUIPMENT FOR THIS PROJECT SHALL BE "ECONOLITE."

NEW CABINETS SHALL HAVE FRONT AND BACK DOORS AND A SEPARATE CIRCUIT BREAKER FOR STREET LIGHTING.

RESTORATION OF WORK AREA. RESTORATION OF THE TRAFFIC SIGNAL WORK AREA SHALL BE INCIDENTAL TO THE RELATED PAY ITEM SUCH AS FOUNDATION, CONDUIT, HANDHOLE, TRENCH AND BACKFILL, ETC., AND NO EXTRA COMPENSATION SHALL BE ALLOWED. ALL ROADWAY SURFACES SUCH AS SHOULDERS, MEDIANS, SIDEWALKS, PAVEMENT, ETC. SHALL BE REPLACED IN KIND. ALL DAMAGE TO MOWED LAWNS SHALL BE REPLACED WITH AN APPROVED SOD, AND ALL DAMAGE TO UNMOWED FIELDS SHALL BE SEEDED IN ACCORDANCE WITH STANDARD SPECIFICATIONS 252 AND 250 RESPECTIVELY.



PLANS PREPARED BY:  
**GEWALT HAMILTON ASSOCIATES, INC.**  
 Consulting Engineers & Surveyors  
 650 Forest Edge Drive  
 Vernon Hills, IL 60061  
 (847) 478-9700  
 (847) 478-9700 Fax

REVISIONS	
NAME	DATE

ILLINOIS DEPARTMENT OF TRANSPORTATION  
**TRAFFIC SIGNAL MODERNIZATION PLAN**  
 ESSINGTON ROAD AT CATON FARM ROAD  
 JOLIET, ILLINOIS  
 SCALE: 1"=20'  
 DATE: DECEMBER 7, 2007  
 DRAWN BY: LB  
 DESIGNED BY: TCM  
 CHECKED BY: BLS

MATCHLINE B-B