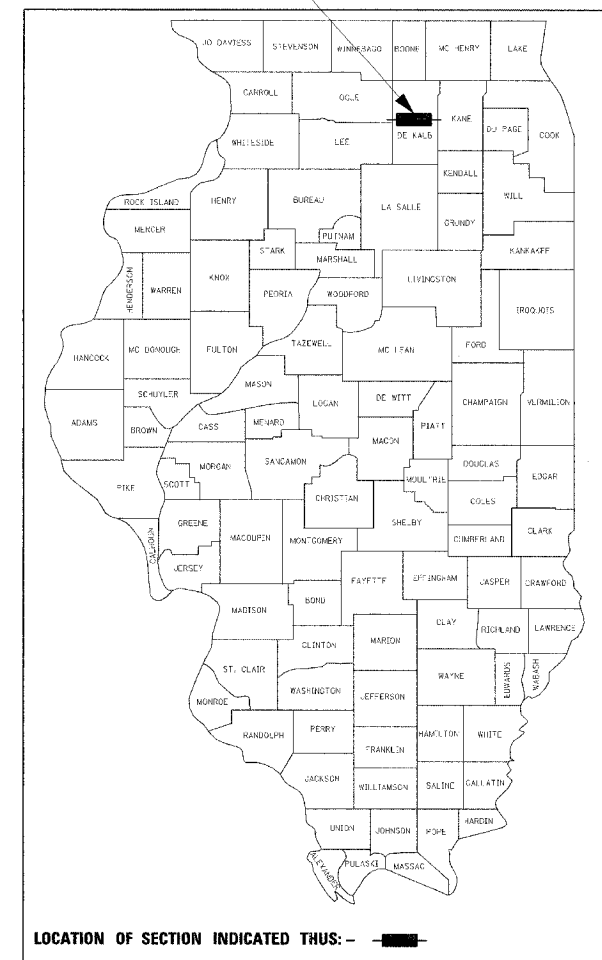


STATE OF ILLINOIS
DEPARTMENT OF TRANSPORTATION
DIVISION OF HIGHWAYS
PLANS FOR PROPOSED
MAJOR BRIDGE PROGRAM
FAU 5345 (FAIRVIEW DRIVE)
OVER SOUTH BRANCH OF
KISHWAUKEE RIVER

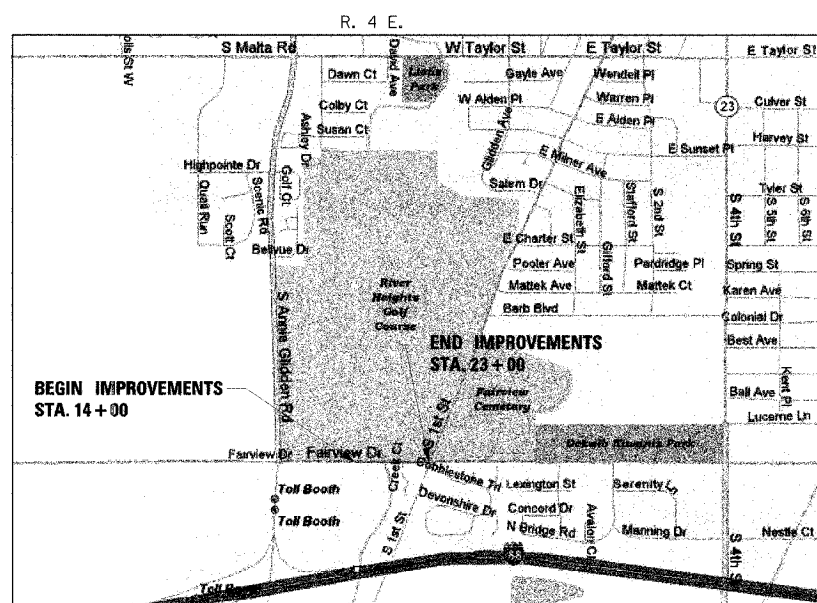
SECTION 04-00166-00-BR
PROJECT BHM-5017 (39)
DEKALB COUNTY
JOB NO. C-93-027-07

PROJECT LOCATION



- INDEX OF SHEETS**
- TITLE SHEET
 - SUMMARY OF QUANTITIES
 - SCHEDULES
 - GENERAL NOTES
 - ALIGNMENTS AND BENCHMARKS
 - 6-7. TYPICAL SECTIONS
 - ROADWAY REMOVAL PLAN
 - ROADWAY PLAN AND PROFILE
 - STORM WATER MANAGEMENT & EROSION CONTROL PLAN
 - WATERMAIN RELOCATION PLAN
 - PAVEMENT MARKING & SIGNAGE PLAN
 - LANDSCAPE RESTORATION
 - WATERMAIN NOTES & MISC. DETAILS
 - SLOPED METAL END SECTION DETAIL
 - DETOUR AND TEMPORARY TRAFFIC CONTROL PLAN
 - 17-35. BRIDGE SHEETS
 - 36-39. CROSS SECTIONS

- HIGHWAY STANDARDS**
- 280001-04 TEMPORARY EROSION CONTROL SYSTEMS
 - 420401-06 BRIDGE APPROACH PAVEMENT
 - 515001-02 NAME PLATE FOR BRIDGES
 - 542301-01 END SECTION, FLARED, PRECAST REINFORCED CONCRETE, ROUND CONCRETE HEADWALL FOR PIPE DRAIN
 - 601101 MANHOLE TYPE A, 72" DIAMETER
 - 602406-02 FLAT SLAB TOP, PRECAST REINFORCED CONCRETE
 - 602601-01 MANHOLE STEPS
 - 602701-01 FRAME AND LIDS, TYPE 1
 - 604001-02 FRAME AND GRATE, TYPE 11V
 - 604056-02 COMBINATION CONCRETE CURB AND GUTTER
 - 606001-03 STEEL PLATE BEAM GUARDRAIL
 - 630001-07 TRAFFIC BARRIER TERMINAL: TYPE 1 SPECIAL, SHOULDER WIDENING FOR
 - 630301-04 TRAFFIC BARRIER TERMINAL: TYPE 6
 - 631031-06 REFLECTOR AND TERMINAL MARKER PLACEMENT
 - 635006-02 MARKERS; RIGHT-OF-WAY
 - 666001 PERMANENT SURVEY MARKERS
 - 667101 LANE CLOSURE, 2L, 2W: SHORT TIME OPERATIONS
 - 701301-02 LANE CLOSURE, URBAN: 2L, 2W, UNDIVIDED
 - 701501-04 TRAFFIC CONTROL DEVICES
 - 701901 SIGN PANEL MOUNTING DETAILS
 - 720001 SIGN PANEL ERECTION DETAILS
 - 720006-01 POSTS, METAL, FOR SIGNS, MARKERS AND DELINEATORS
 - 720011 POSTS, METAL, APPLICATIONS FOR TYPE A AND B
 - 729001 TYPICAL PAVEMENT MARKINGS
 - 780001-01 TYPICAL APPLICATION OF TRAFFIC CONTROL DEVICES
 - BLR 21-7 TRAFFIC CONTROL: DEVICES; TYPICAL APPLICATION OF,
 - BLR 22-5 ON RURAL LOCAL HIGHWAYS (2L, 2W RURAL TRAFFIC) (ROAD CLOSED TO THRU TRAFFIC)

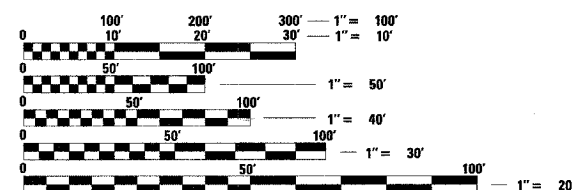


PROPOSED IMPROVEMENTS:
 REMOVAL OF EXISTING TWO SPAN CONTINUOUS REINFORCED CONCRETE SLAB BRIDGE CARRYING TWO EXISTING LANES OF FAIRVIEW DRIVE OVER SOUTH BRANCH KISHWAUKEE RIVER.

CONSTRUCTION OF A NEW FOUR LANE THREE SPAN CONTINUOUS REINFORCED CONCRETE SLAB BRIDGE ON AN EXISTING ALIGNMENT WITH NEW PROFILE; STORM SEWER; RELOCATED WATER MAIN; AND LANDSCAPING. LENGTH OF NEW ROADWAY PORTION IS APPROXIMATELY 900 FEET.

CONSTRUCTION WILL BEGIN IN THE SPRING OF 2008 AND WILL NOT BE STAGED. TRAFFIC CONTROL WILL CONSIST OF FULL CLOSURE OF FAIRVIEW DRIVE WITH A SIGNED DETOUR ROUTE.

TRAFFIC DATA:
 FUNCTIONAL CLASSIFICATION: ARTERIAL
 CURRENT ADT : 3868
 2027 ADT : 13000
 DESIGN SPEED : 30 MPH
 POSTED SPEED : 30 MPH



FULL SIZE PLANS HAVE BEEN PREPARED USING STANDARD ENGINEERING SCALES. REDUCED SIZED PLANS WILL NOT CONFORM TO STANDARD SCALES. IN MAKING MEASUREMENTS ON REDUCED PLANS, THE ABOVE SCALES MAY BE USED.

J.U.L.I.E.
JOINT UTILITY LOCATION INFORMATION FOR EXCAVATION
1-800-892-0123

UTILITY NOTE

THE LOCATIONS OF THOSE BURIED AND ABOVEGROUND UTILITIES SHOWN ARE APPROXIMATE, AND ARE NOT TO BE REFERENCED FOR CONSTRUCTION PURPOSES. THE IMPLIED PRESENCE OR ABSENCE OF UTILITIES IS NOT TO BE CONSTRUED BY THE OWNER, ENGINEER, CONTRACTOR, OR SUBCONTRACTORS TO BE AN ACCURATE AND COMPLETE REPRESENTATION OF UTILITIES THAT MAY OR MAY NOT EXIST ON THE CONSTRUCTION SITE. BURIED AND ABOVEGROUND UTILITY LOCATION, IDENTIFICATION, AND MARKING ARE THE SOLE RESPONSIBILITY OF THE CONTRACTOR. REROUTING, DISCONNECTION, PROTECTION, ETC. OF ANY UTILITIES MUST BE COORDINATED AMONG THE CONTRACTOR, UTILITY COMPANY, AND OWNER. SITE SAFETY, INCLUDING THE AVOIDANCE OF HAZARDS, ASSOCIATED WITH BURIED AND ABOVEGROUND UTILITIES REMAIN THE SOLE RESPONSIBILITY OF THE CONTRACTOR.

LOCATION PLAN

SCALE IN FEET

NET LENGTH = 900 FEET (0.17 MILES)

CHARLES P. SMITH
 062-056356
 SIGNATURE
 DATE: 11/5/07
 LIC. EXP. DATE: 11/30/07

© Copyright Hanson Professional Services Inc. 2006

HANSON
 HANSON PROFESSIONAL SERVICES INC.
 6775 FINCHAM DRIVE
 ROCKFORD, IL 61108-3001

ILLINOIS DESIGN FIRM
LICENSE NO: 184-001-084

AGENCY RESPONSIBLE FOR LETTING

APPROVED November 5, 2007
Joel C. Maurer
 CITY OF DEKALB, CITY ENGINEER

PASSED 11-08 2007
Benjamin L. Fry
 DISTRICT 3 ENGINEER OF LOCAL ROADS & STREETS

RELEASED FOR BID BASED ON LIMITED REVIEW 11-08 2007
George E. Ryan
 DEPUTY DIRECTOR OF HIGHWAYS, REGION 2 ENGINEER

STATE OF ILLINOIS
 DEPARTMENT OF TRANSPORTATION

PRINTED BY THE AUTHORITY
OF THE STATE OF ILLINOIS