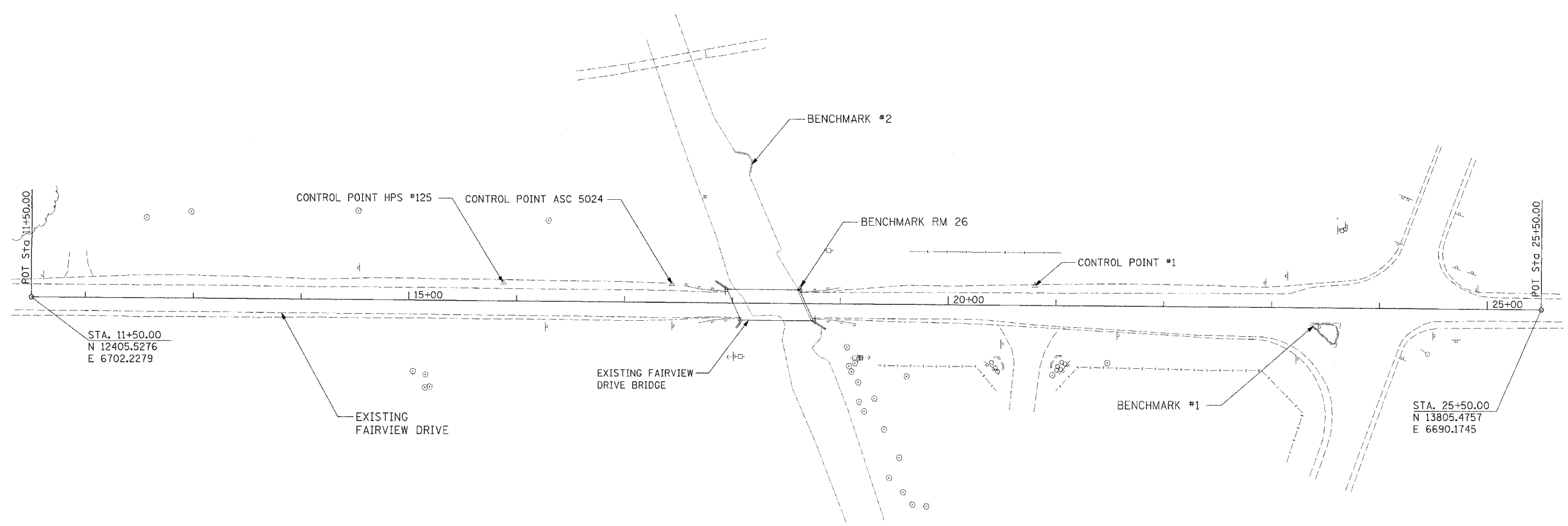
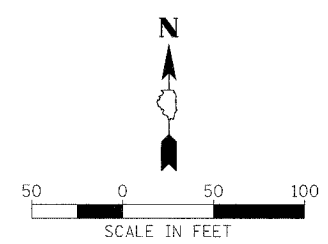


F.A.U. RTE.	SECTION	COUNTY	TOTAL SHEETS	SHEET NO.
5345	04-00166-00-BR	DEKALB	39	5
STA. 14+00		TO STA. 23+00		
FED. ROAD DIST. NO.		ILLINOIS	FED. AID PROJECT	
CONTRACT NO. 87339				



BENCHMARKS				
B.M. #	STATION	OFFSET	DESCRIPTION	ELEVATION
B.M. #1	23+40	17' RT	CHISELED "X" ON BACK OF CURB WEST SIDE OF ISLAND AT INTERSECTION OF FAIRVIEW DRIVE AND SOUTH FIRST STREET.	853.57
B.M. #2	18+17	130' LT	CHISELED "□" ON SOUTH SIDE OF HEADWALL OF 66" RCP 130 FEET NORTH OF FAIRVIEW DRIVE AND EAST SOUTH BRANCH KISHWAUKEE RIVER, IN GOLF COURSE.	846.07
B.M. RM 26	18+60	15' LT	METAL RIVET TOP DOWNSTREAM RIGHT WINGWALL OF FAIRVIEW DRIVE BRIDGE OVER THE SOUTH BRANCH KISHWAUKEE RIVER.	851.74

CONTROL POINTS				
POINT #	NORTHING	EASTING	STATION	OFFSET
HPS #1	6712.72	13336.05	20+80.40	18.50' LT
ASC 5024	6714.24	12999.58	17+43.93	17.13' LT
HPS #125	6715.48	12843.10	15+87.44	17.02' LT



**NOTE:**  
BASIS OF BEARING IS ASSUMED.  
VERTICAL DATUM BASED ON NGVD29.

REVISIONS	
NAME	DATE

ILLINOIS DEPARTMENT OF TRANSPORTATION  
SECTION 04-00166-00-BR  
DEKALB COUNTY  
FAIRVIEW DRIVE BRIDGE  
**ALIGNMENT AND BENCHMARKS  
PLAN SHEET**  
SCALE: AS SHOWN  
DATE 11/05/07  
DRAWN BY MWH  
CHECKED BY CPS

**HANSON**  
 Hanson Professional Services Inc.  
 Copyright Hanson Professional Services Inc. 2006

LAYOUT: MRH 11/18/06  
 DRAWN: MRH 02/05/06  
 REVIEWED: DFS 02/12/07  
 11/05 10:05:06 AM  
 106 106.067655636401807 2007 044 AM  
 106 106.067655636401807 2007 044 AM