

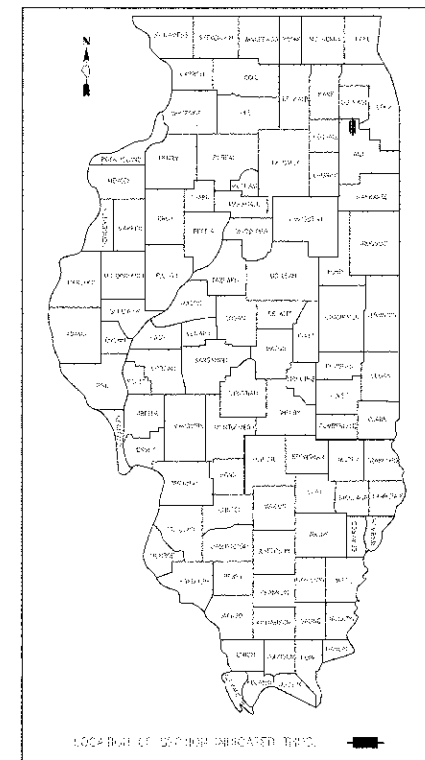
| FAP      | SECTION        | COUNTY             | TOTAL SHEETS | SHEET NO. |
|----------|----------------|--------------------|--------------|-----------|
| 0870     | 08-00049-00-LS | WILL               | 33           | 1         |
| ILLINOIS |                | CONTRACT NO. 63714 |              |           |

| INDEX OF SHEETS |  |
|-----------------|--|
| 1               | TITLE SHEET                                    |
| 2               | SUMMARY OF QUANTITIES                          |
| 3               | EXISTING & PROPOSED SECTIONS                   |
| 4 - 11          | DEMOLITION PLANS & HARDSCAPE PLANS             |
| 12 - 19         | LANDSCAPE PLANS                                |
| 20              | LANDSCAPE NOTES, PLANT LIST & PLANTING DETAILS |
| 21 - 22         | LANDSCAPE SPECIFICATION                        |
| 23 - 30         | IRRIGATION PLANS                               |
| 31              | IRRIGATION SCHEDULE                            |
| 32              | IRRIGATION DETAILS & NOTES                     |
| 33              | WALL DETAILS                                   |

STATE OF ILLINOIS  
DEPARTMENT OF TRANSPORTATION  
DIVISION OF HIGHWAYS

PLANS FOR PROPOSED  
FEDERAL AID HIGHWAY  
FAP 0870 (IL ROUTE 53-BOLINGBROOK DRIVE)  
REMINGTON BOULEVARD TO ROYCE ROAD  
LANDSCAPED MEDIAN RECONSTRUCTION

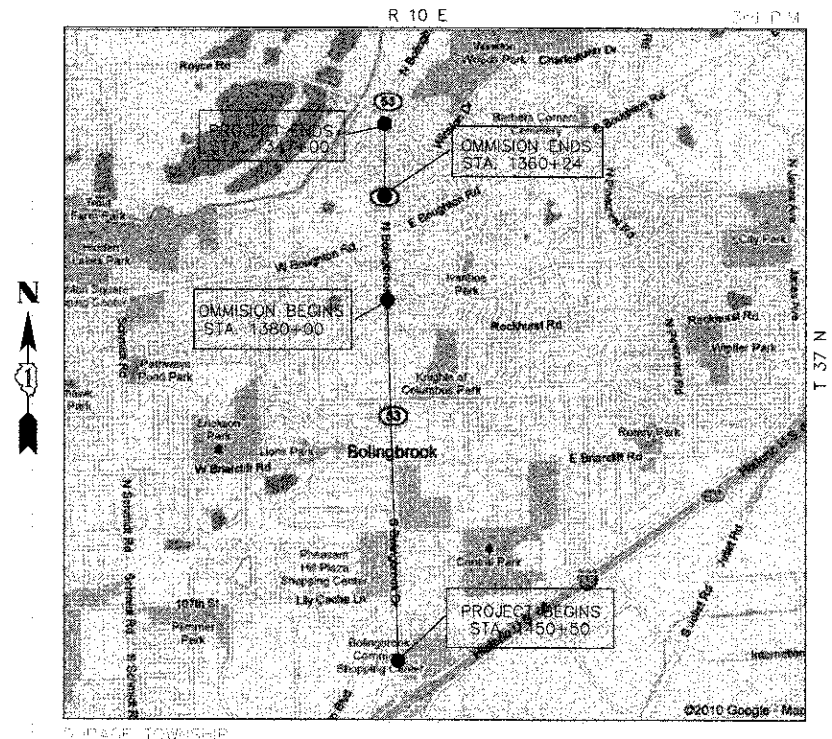
SECTION NO. 08-00049-00-LS  
PROJECT NO. TE-00D1(796)  
VILLAGE OF BOLINGBROOK  
WILL COUNTY  
JOB NO. C-91-511-08



| INDEX OF APPLICABLE HIGHWAY STANDARDS |  |
|---------------------------------------|--|
| STANDARD                              | TITLE  |
| 701421-5                              | LANE ENCLOSURE, MULTILANE, DAY OPERATIONS ONLY, FOR SPEEDS $\geq$ 45 MPH TO 55 MPH |
| 701901-2                              | TRAFFIC CONTROL DEVICES  |

**SCALES**

FULL SIZE PLANS (22 x 34) HAVE BEEN PREPARED USING STANDARD ENGINEERING SCALES. REDUCED SIZED PLANS (11 x 17) WILL CONFORM TO REDUCED SCALES. IN MAKING MEASUREMENTS ON REDUCED PLANS, THE ABOVE SCALES MAY BE USED.



**LOCATION MAP**  
(NOT TO SCALE)

GROSS LENGTH OF PROJECT : 10,350 FT = 1.960 MILE  
NET LENGTH OF PROJECT: 8,374 FT = 1.586 MILE

PROGRAM AND OFFICE ENGINEER: CHARLES F. RIDDLE, P.E. (847) 705-4406, SCHAUMBURG, IL

PROJECT IS LOCATED IN VILLAGE OF BOLINGBROOK

DESIGN SPEED: 40/45 MPH  
POSTED SPEED: 40/45 MPH  
TRAFFIC VOLUME = 32,300 VPD (2011)  
DESIGN DESIGNATION = OTHER PRINCIPAL ARTERIAL

**CALL 800-368-5848** (FOR UTILITY LOCATIONS OF SPANION FOR EXCAVATORS)  
48 Hours (2 working days) Before You Dig.  
TOLL FREE 1-800-368-5848 ext. 511

CONTRACT NO. 63714



*Pratik C. Patel*

PRATIK PATEL, ILLINOIS P.E. 062051388  
VILLAGE OF BOLINGBROOK  
EXPIRES 11/30/2013

ILLINOIS DEPARTMENT OF TRANSPORTATION

APPROVED *12-14-2012*  
*Michael R. King*  
VILLAGE OF BOLINGBROOK, DIRECTOR OF PUBLIC WORKS

PASSED *JANUARY 3, 2013*  
*Chad A. Hill*  
DISTRICT 1 ENGINEER OF LOCAL ROADS & STREETS

Releasing For Bid  
Based on Limited  
Review *January 3, 2013*  
*John F. Fattmann*  
DEPUTY DIRECTOR OF HIGHWAYS, REGION 1 ENGINEER

PRINTED BY THE AUTHORITY  
OF THE STATE OF ILLINOIS