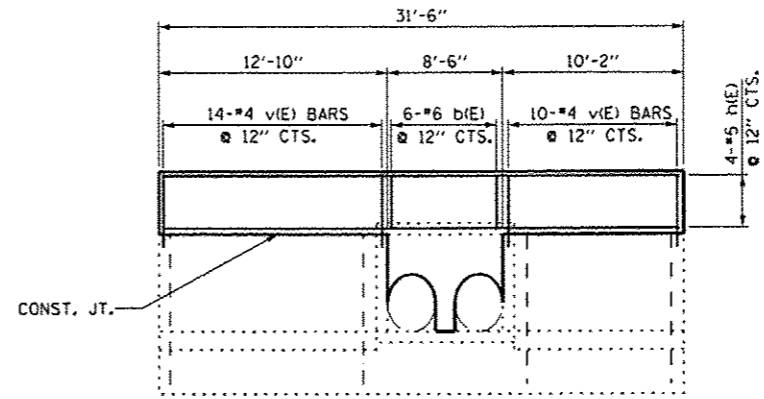
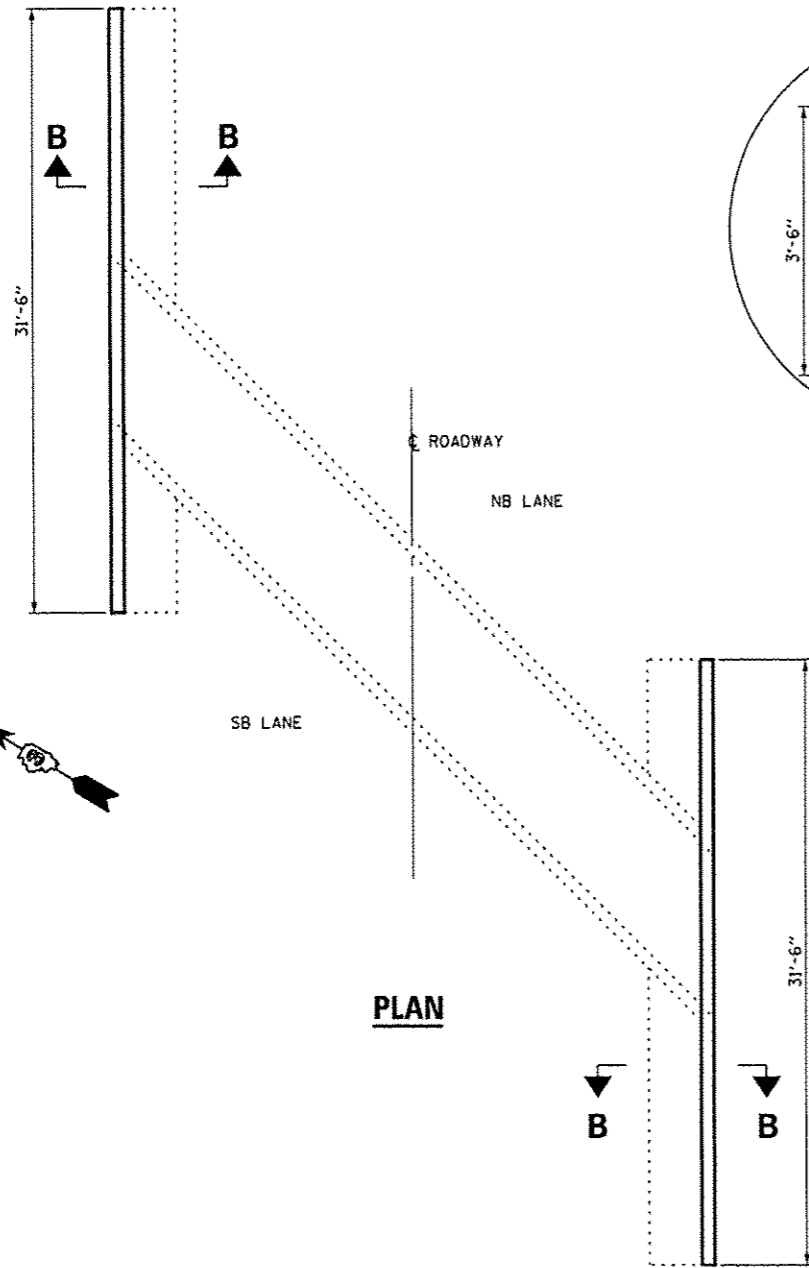


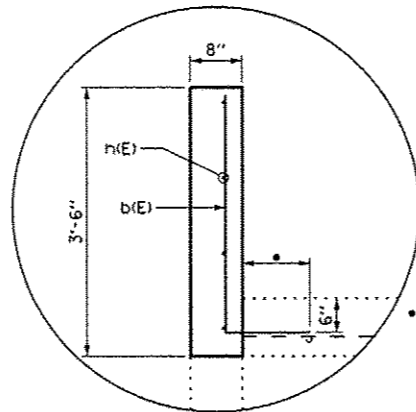
ELEVATION
LOOKING NORTHBOUND



END ELEVATION

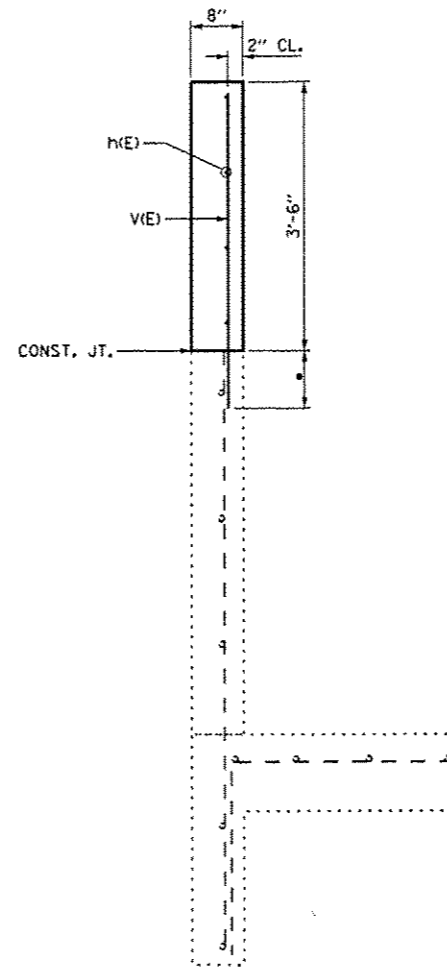


PLAN

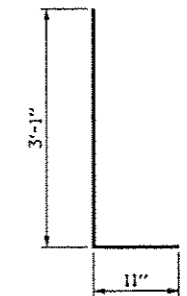


DETAIL B

*DRILL AND GROUT BARS 9" EMBEDMENT ACCORDING TO ARTICLE 584 OF THE STANDARD SPECIFICATIONS



SECTION B-B



b(E) BAR

BILL OF MATERIAL

Bar	No.	Size	Length	Shape
b(E)	12	#6	4'-0"	
h(E)	8	#5	31'-2"	
v(E)	48	#4	4'-1"	
CONCRETE REMOVAL			CU. YD.	5.9
CONCRETE BOX CULVERT			CU. YD.	5.9
REINFORCEMENT BARS, EPOXY COATED			LBS.	460
REMOVE AND REERECT STEEL PLATE BEAM GUARDRAIL, TYPE A ATTACHED TO STRUCTURES			FOOT	75

FILE NAME *	USER NAME = woodshankr	DESIGNED -	REVISED -
c:\pwwork\pardo\woodshankr\1108312979\66651-sh1-detail1.svdgn		DRAWN -	REVISED -
	PLOT SCALE = 100.0000 1/16" = 1'	CHECKED -	REVISED -
	PLOT DATE = 11/15/2012	DATE -	REVISED -

STATE OF ILLINOIS
DEPARTMENT OF TRANSPORTATION

F.A.P. RTE.	SECTION	COUNTY	TOTAL SHEETS	SHEET NO.
623	(H)	LASALLE	8	8
SCALE:			SHEET NO. 3 OF 3 SHEETS	STA. TO STA.
ILLINOIS FED. AID PROJECT				