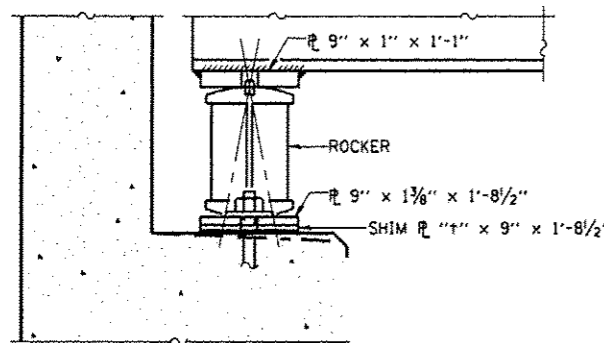
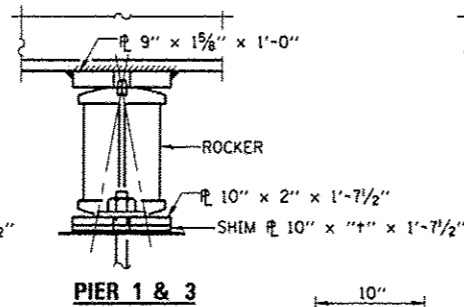


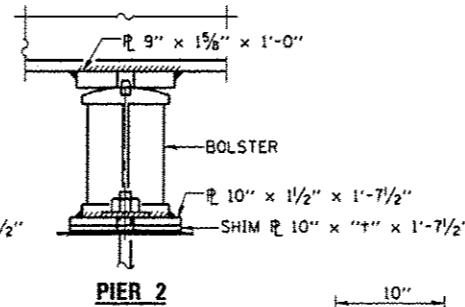
FRAMING PLAN
ALL BEAMS W 36 X 150



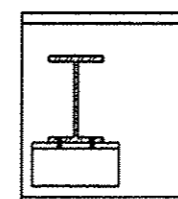
SECTION AT ABUTMENT



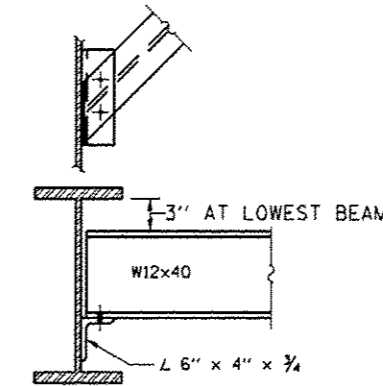
PIER 1 & 3



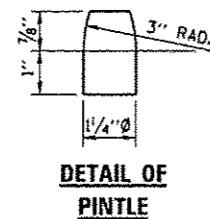
PIER 2



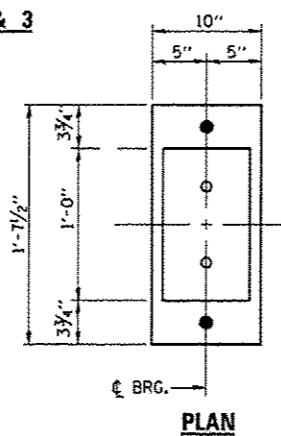
DIAPHRAGMS D
8 REQUIRED



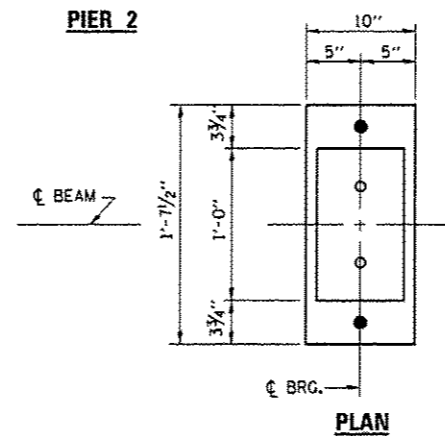
DIAPHRAGMS D1 & D2
60 REQUIRED



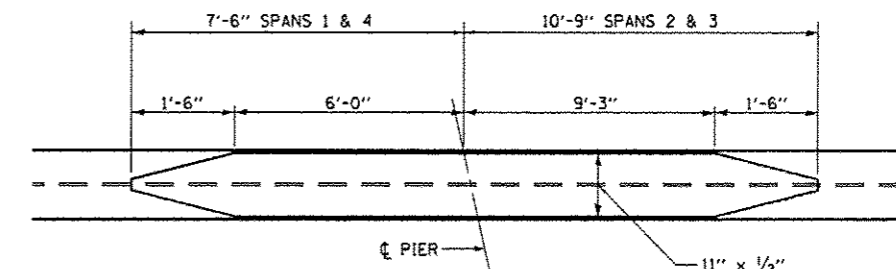
DETAIL OF PINTLE



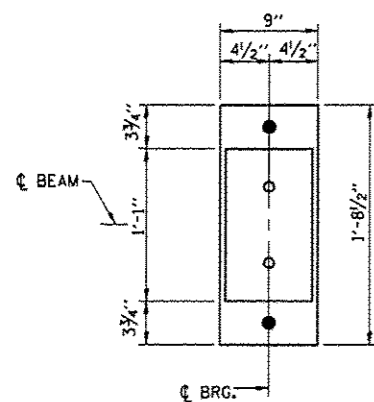
PLAN



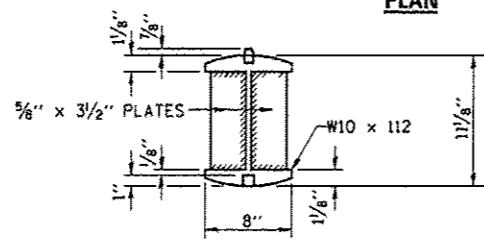
PLAN



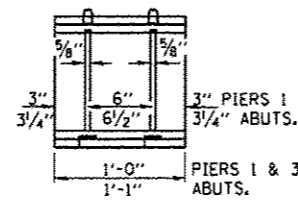
DETAIL OF COVER PLATES AT PIER 2



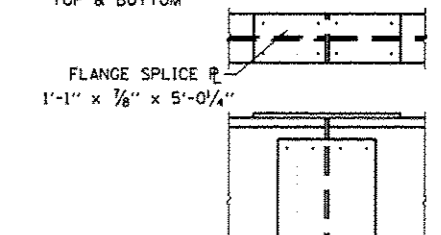
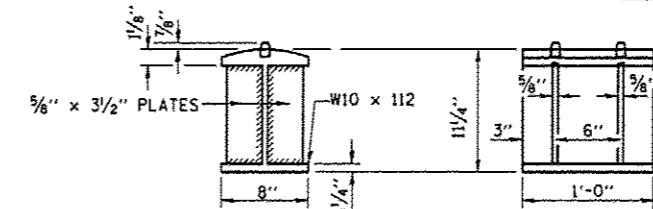
PLAN



DETAIL OF ROCKER AT ABUTS, PIERS 1 & 3



DETAIL OF BOLSTER AT PIER 2



DETAIL OF SPlice

FILE NAME :	USER NAME :	DESIGNED -	REVISED -
01\pwwork\p1\dot\woodshankr\1\0319109\0366C60-shc-details.dgn	woodshankr1	RW	
MODEL NAME :	PLT SCALE :	CHECKED -	REVISED -
	1/8" = 1'-0"	RW	
	PLT DATE :	DATE -	REVISED -
	11/15/2012		

STATE OF ILLINOIS
DEPARTMENT OF TRANSPORTATION

STRUCTURAL STEEL DETAILS
FOR STRUCTURE NO. 038-0126

SCALE: SHEET 1 OF 1 SHEETS STA. 28+33.50 TO STA. 31+62.92

F.A.I. RTE.:	SECTION:	COUNTY:	TOTAL SHEETS:
57	(38-7HB-1)BP	IRROUOIS	8
			NO. 8
			CONTRACT NO. 66C60
			ILLINOIS FED. AID PROJECT