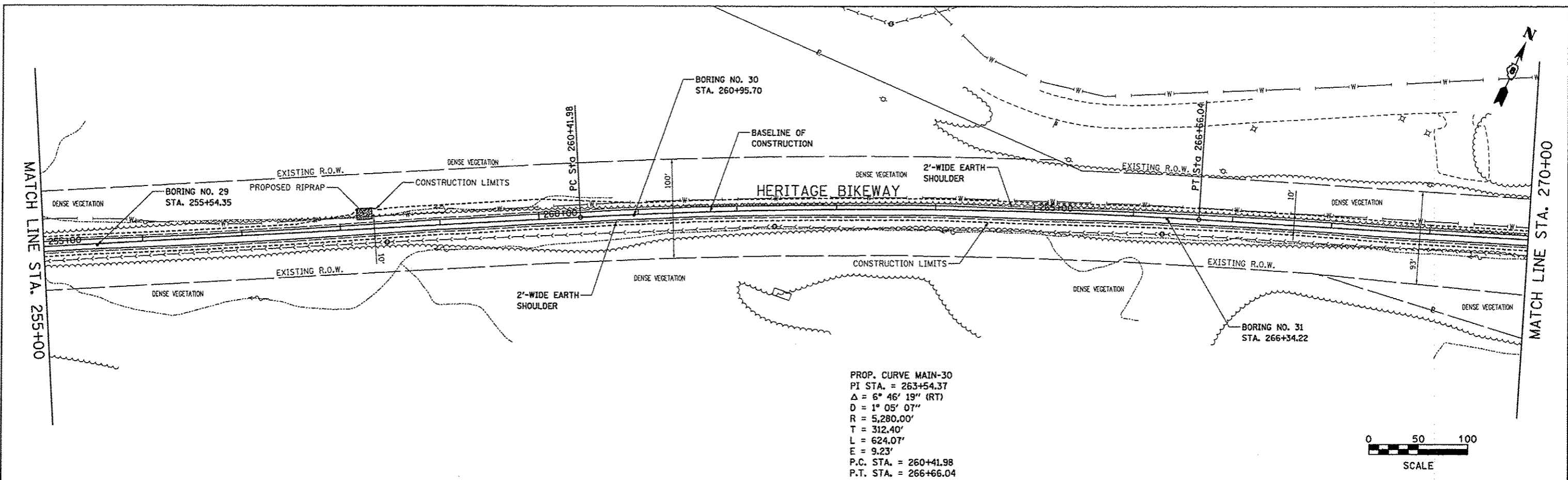
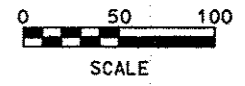


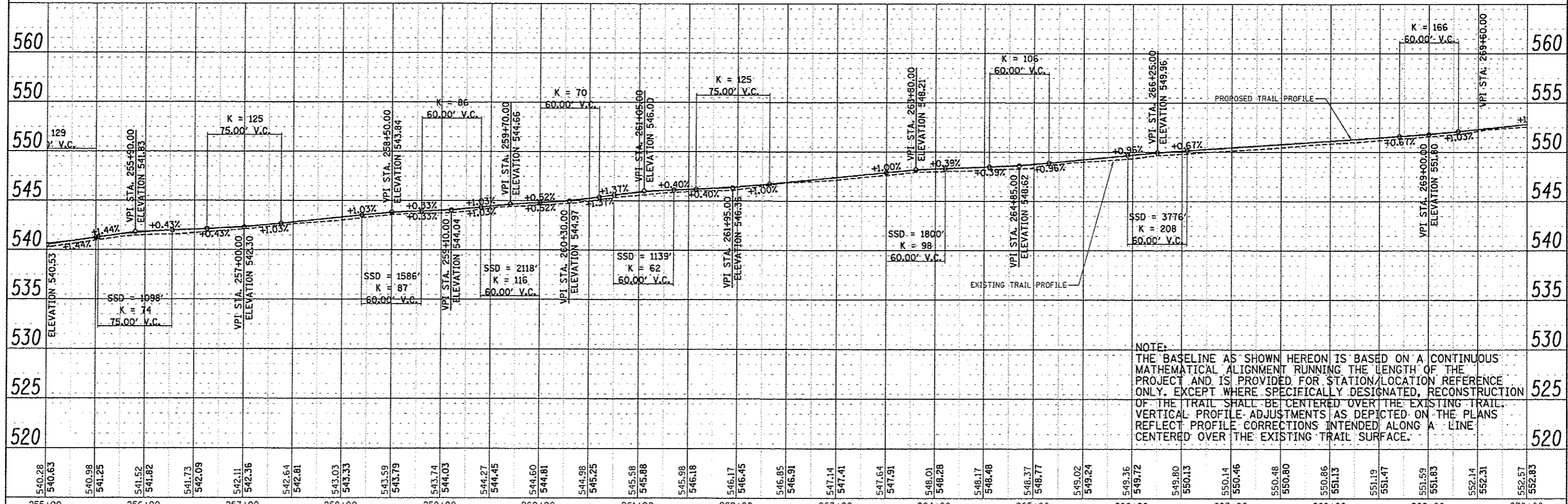
DATE	
BY	
REVISIONS	
NO.	
DESCRIPTION	
DATE	
BY	
NO.	
DESCRIPTION	
DATE	
BY	
NO.	
DESCRIPTION	
DATE	
BY	
NO.	
DESCRIPTION	



PROP. CURVE MAIN-30
 PI STA. = 263+54.37
 $\Delta = 6^\circ 46' 19''$ (RT)
 $D = 1^\circ 05' 07''$
 $R = 5,280.00'$
 $T = 312.40'$
 $L = 624.07'$
 $E = 9.23'$
 P.C. STA. = 260+41.98
 P.T. STA. = 266+66.04



DATE	
BY	
REVISIONS	
NO.	
DESCRIPTION	
DATE	
BY	
NO.	
DESCRIPTION	
DATE	
BY	
NO.	
DESCRIPTION	



NOTE:
 THE BASELINE AS SHOWN HEREON IS BASED ON A CONTINUOUS MATHEMATICAL ALIGNMENT RUNNING THE LENGTH OF THE PROJECT AND IS PROVIDED FOR STATION/LOCATION REFERENCE ONLY. EXCEPT WHERE SPECIFICALLY DESIGNATED, RECONSTRUCTION OF THE TRAIL SHALL BE CENTERED OVER THE EXISTING TRAIL. VERTICAL PROFILE ADJUSTMENTS AS DEPICTED ON THE PLANS REFLECT PROFILE CORRECTIONS INTENDED ALONG A LINE CENTERED OVER THE EXISTING TRAIL SURFACE.

FILE NAME: plant.dgn	USER NAME: Jeremy	DESIGNED: SAS	MADISON COUNTY TRANSIT DISTRICT HERITAGE BIKEWAY		PLAN AND PROFILE		F.A. RT#	SECTION	COUNTY	TOTAL SHEETS	SHEET NO.		
	PLOT SCALE: *SCALE*	DRAWN: JDH					06-00D16-00-BT	MADISON	310	43			
	PLDT DATE: 12/18/2012	CHECKED: WJB											
		DATE: 11/30/12											
SCALE: 1" = 50'							SHEET NO. 12 OF 30 SHEETS		STA. 255+00.00 TO STA. 270+00.00			FED. ROAD DIST. NO.	ILLINOIS FED. AID PROJECT
											CONTRACT NO. 97433		