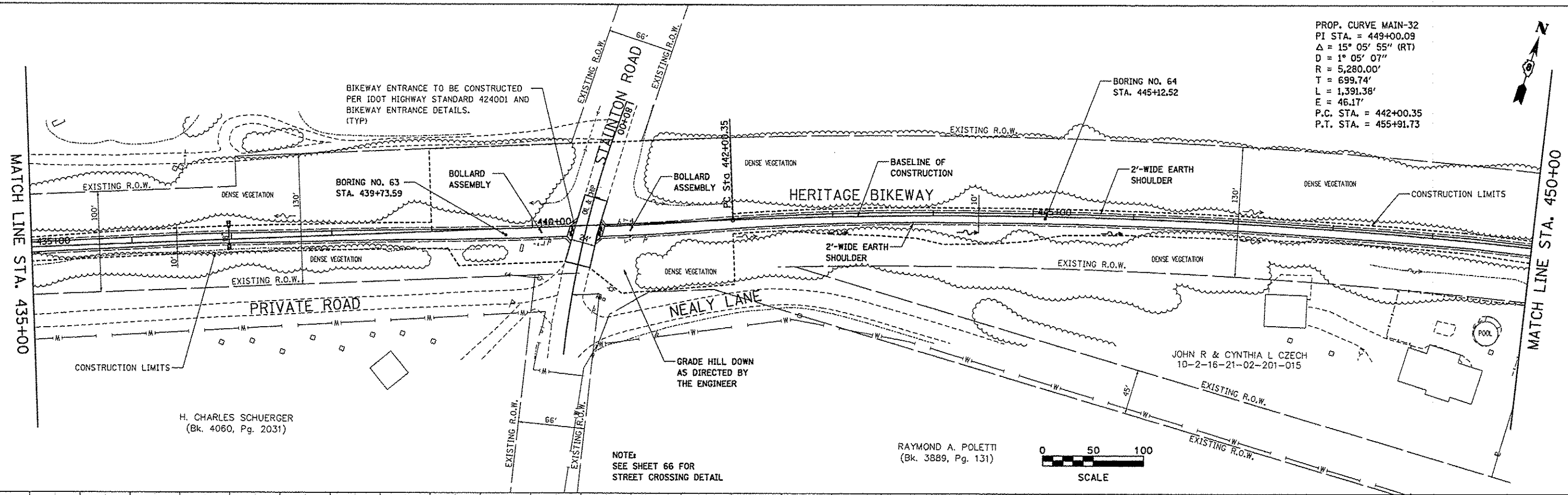


PROP. CURVE MAIN-32  
 PI STA. = 449+00.09  
 $\Delta = 15^\circ 05' 55''$  (RT)  
 $D = 1^\circ 05' 07''$   
 $R = 5,280.00'$   
 $T = 699.74'$   
 $L = 1,391.38'$   
 $E = 46.17'$   
 P.C. STA. = 442+00.35  
 P.T. STA. = 455+91.73



PLAN	DATE
BY	
REVISIONS	
NO.	
DATE	
BY	
DESCRIPTION	
NO.	
DATE	

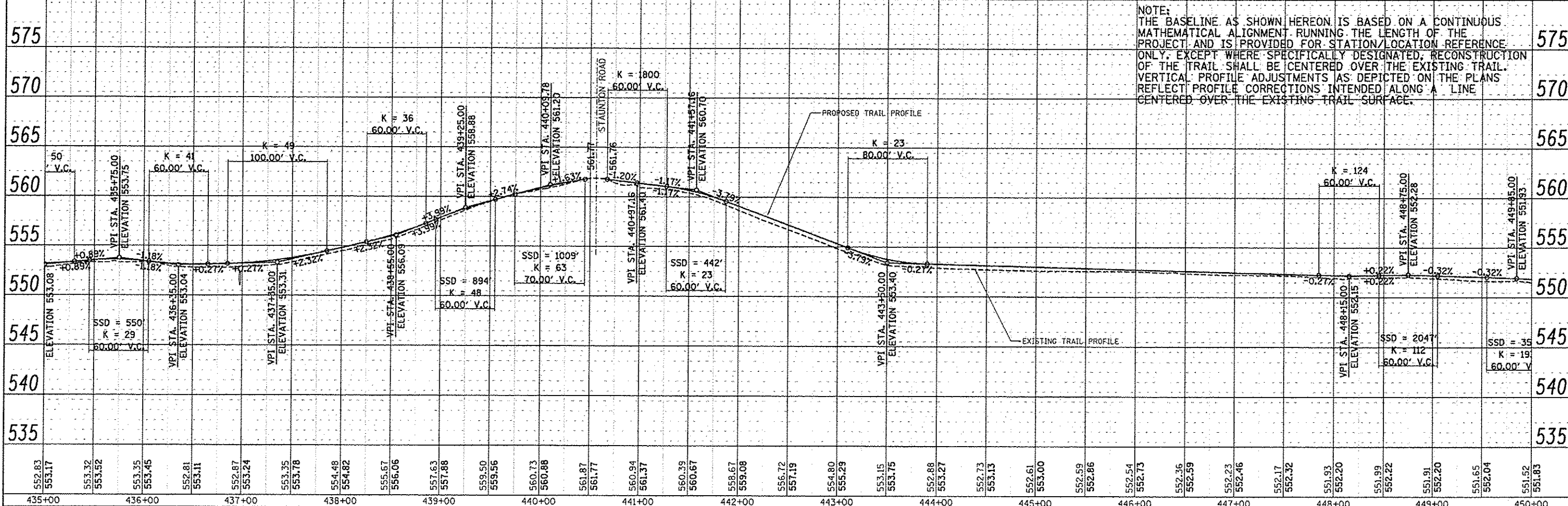
H. CHARLES SCHUERGER  
 (Bk. 4060, Pg. 2031)

NOTE:  
 SEE SHEET 66 FOR  
 STREET CROSSING DETAIL

RAYMOND A. POLETTI  
 (Bk. 3889, Pg. 131)



PROFILE	DATE
BY	
REVISIONS	
NO.	
DATE	
BY	
DESCRIPTION	
NO.	
DATE	



FILE NAME: plan24.dgn	USER NAME: jeromy	DESIGNED: SAS	MADISON COUNTY TRANSIT DISTRICT HERITAGE BIKEWAY	PLAN AND PROFILE	SECTION: 06-00016-00-BT	COUNTY: MADISON	TOTAL SHEETS: 310	SHEET NO.: 55
		DRAWN: JDH						
		CHECKED: WJB						
		DATE: 11/30/12						
PLOT SCALE: 1/4" = 50'			SCALE: 1" = 50'		SHEET NO. 24 OF 30 SHEETS		STA. 435+00.00 TO STA. 450+00.00	
FED. ROAD DIST. NO. [ILLINOIS] FED. AID PROJECT								