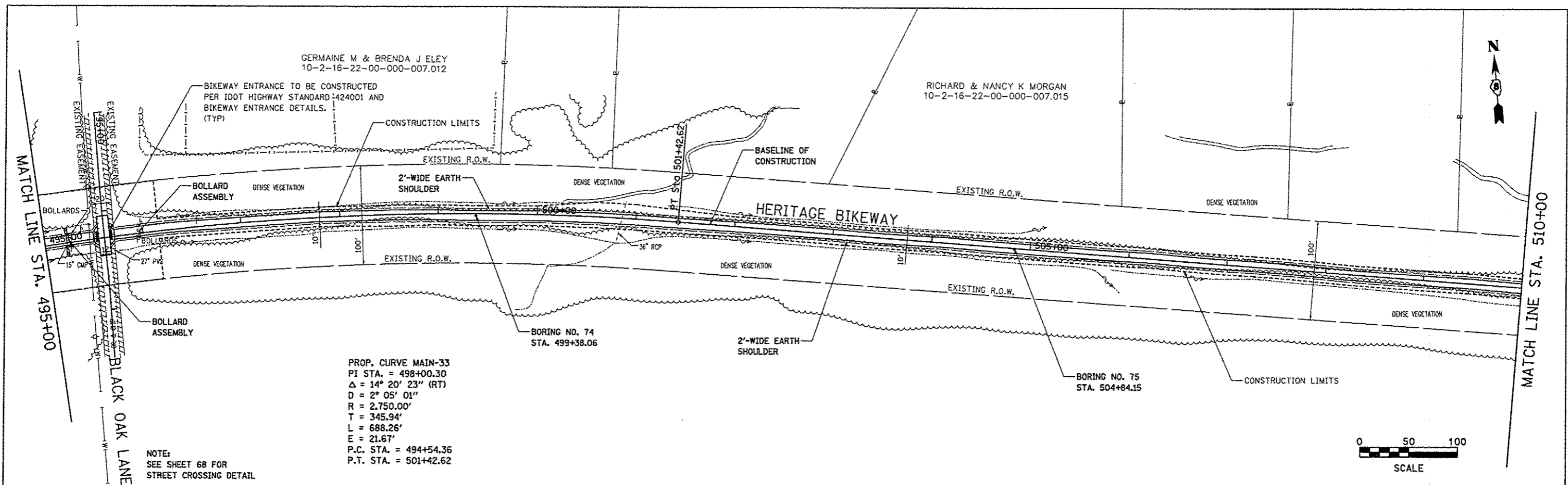


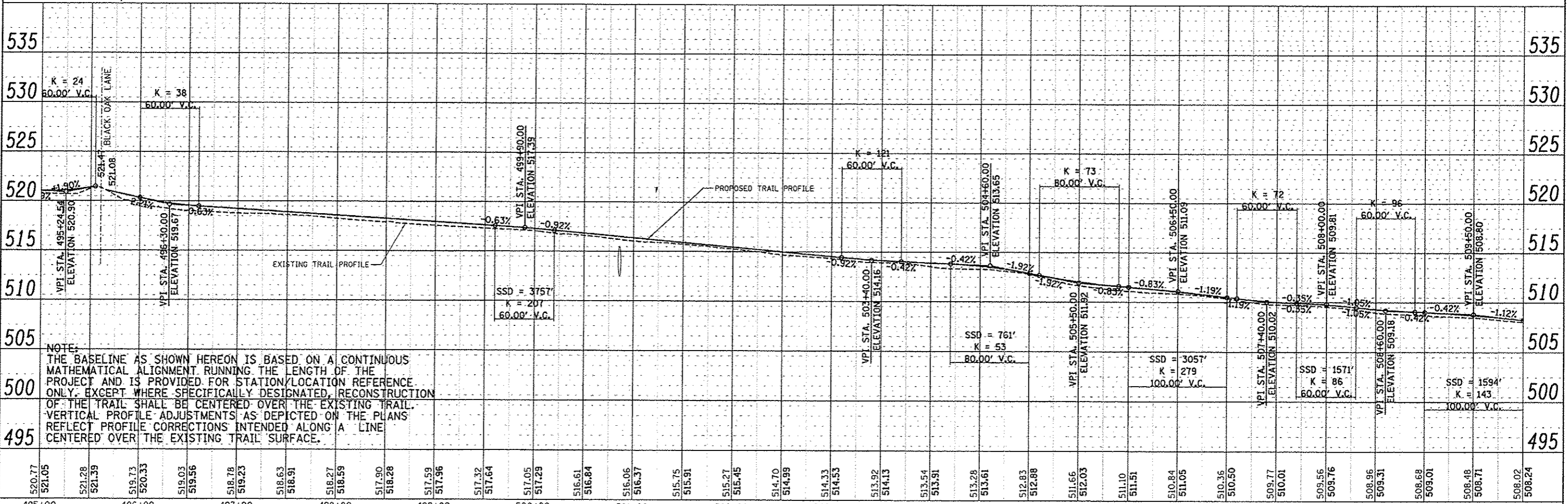
PLAN	DATE
SURVEYED	
ALIGNED	
CHECKED	
BY	
NO.	
FILE NAME	

PROFILE	DATE
DESIGNED	
CHECKED	
BY	
NO.	
FILE NAME	



PROP. CURVE MAIN-33  
 PI STA. = 498+00.30  
 $\Delta = 14^\circ 20' 23''$  (RT)  
 $D = 2^\circ 05' 01''$   
 $R = 2,750.00'$   
 $T = 345.94'$   
 $L = 688.26'$   
 $E = 21.67'$   
 P.C. STA. = 494+54.36  
 P.T. STA. = 501+42.62

NOTE:  
 SEE SHEET 68 FOR  
 STREET CROSSING DETAIL



NOTE:  
 THE BASELINE AS SHOWN HEREON IS BASED ON A CONTINUOUS MATHEMATICAL ALIGNMENT RUNNING THE LENGTH OF THE PROJECT AND IS PROVIDED FOR STATION/LOCATION REFERENCE ONLY. EXCEPT WHERE SPECIFICALLY DESIGNATED, RECONSTRUCTION OF THE TRAIL SHALL BE CENTERED OVER THE EXISTING TRAIL. VERTICAL PROFILE ADJUSTMENTS AS DEPICTED ON THE PLANS REFLECT PROFILE CORRECTIONS INTENDED ALONG A LINE CENTERED OVER THE EXISTING TRAIL SURFACE.

FILE NAME = plan28.dgn	USER NAME = jeremy	DESIGNED - SAS	<b>MADISON COUNTY TRANSIT DISTRICT HERITAGE TRAIL</b>	<b>PLAN AND PROFILE</b>		F.A. RTE.	SECTION	COUNTY	TOTAL SHEETS	SHEET NO.
		DRAWN - JDH				06-00016-00-BT	MADISON	310	59	
		CHECKED - WJB				CONTRACT NO. 97433				
		DATE - 11/30/12				SCALE: 1" = 50'	SHEET NO. 28 OF 30 SHEETS	STA. 495+00.00 TO STA. 510+00.00	FED. ROAD DIST. NO.	ILLINOIS FED. AID PROJECT