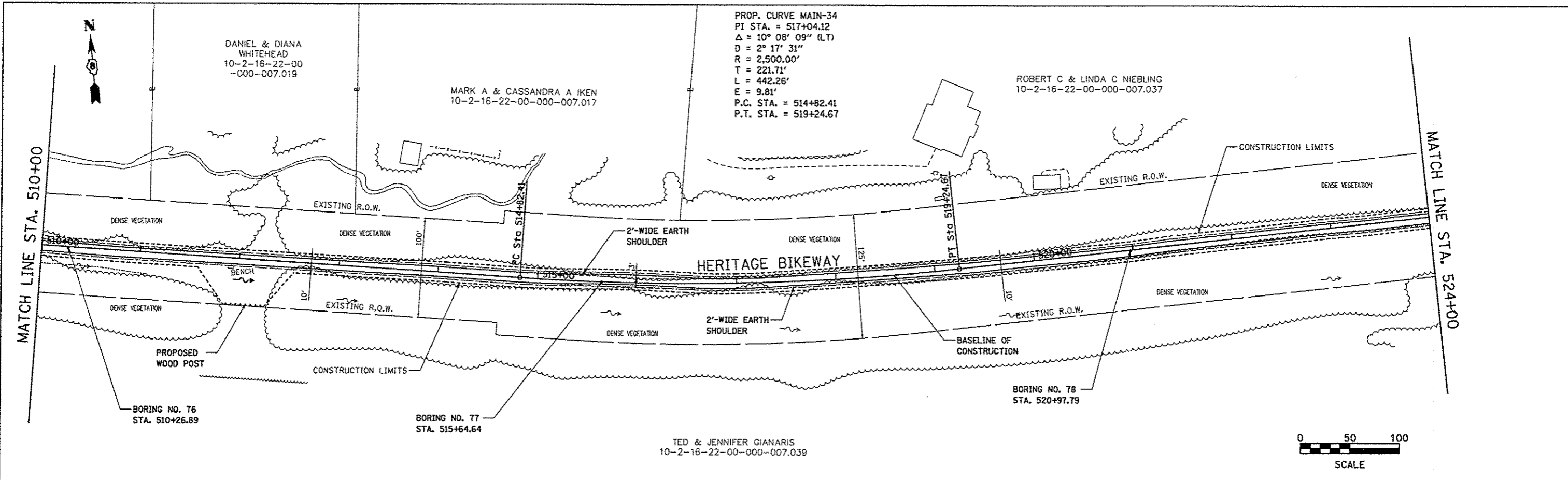
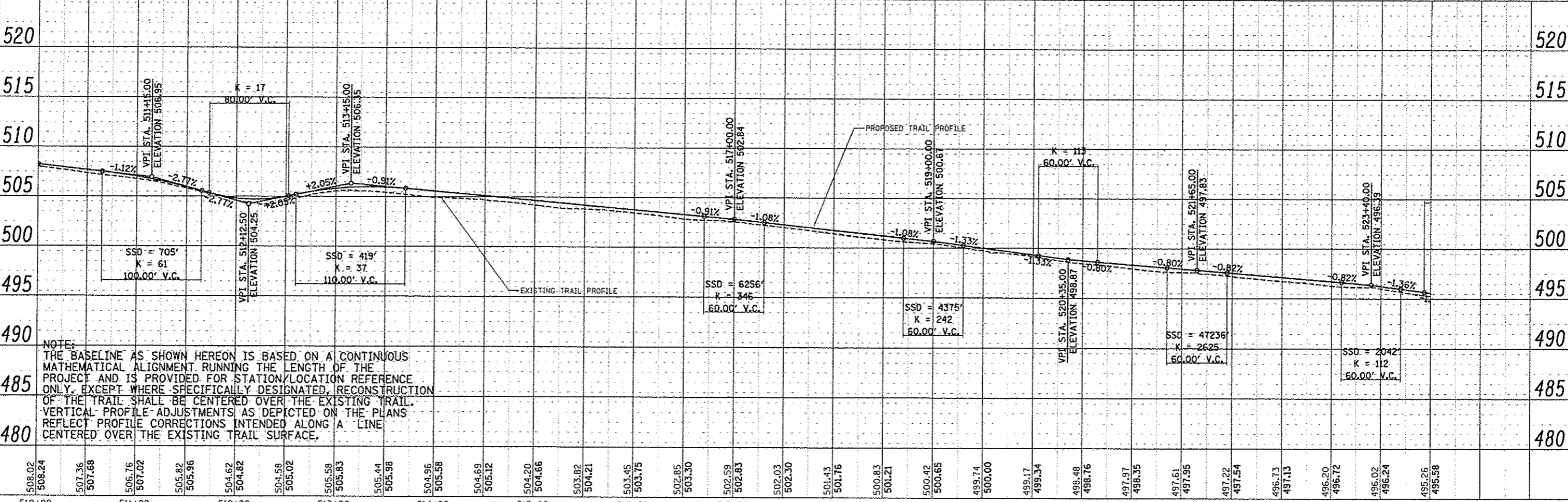


PLAN	BY	DATE
REVISIONS		
NO.	DESCRIPTION	DATE
1	ISSUED FOR PERMIT	11/30/12
2	REVISED	
3	REVISED	
4	REVISED	
5	REVISED	
6	REVISED	
7	REVISED	
8	REVISED	
9	REVISED	
10	REVISED	



PROFILE	BY	DATE
REVISIONS		
NO.	DESCRIPTION	DATE
1	ISSUED FOR PERMIT	11/30/12
2	REVISED	
3	REVISED	
4	REVISED	
5	REVISED	
6	REVISED	
7	REVISED	
8	REVISED	
9	REVISED	
10	REVISED	



NOTE:
 THE BASELINE AS SHOWN HEREON IS BASED ON A CONTINUOUS MATHEMATICAL ALIGNMENT RUNNING THE LENGTH OF THE PROJECT AND IS PROVIDED FOR STATION/LOCATION REFERENCE ONLY. EXCEPT WHERE SPECIFICALLY DESIGNATED, RECONSTRUCTION OF THE TRAIL SHALL BE CENTERED OVER THE EXISTING TRAIL. VERTICAL PROFILE ADJUSTMENTS AS DEPICTED ON THE PLANS REFLECT PROFILE CORRECTIONS INTENDED ALONG A LINE CENTERED OVER THE EXISTING TRAIL SURFACE.

FILE NAME = plan2.dgn	USER NAME = jeramy	DESIGNED - SAS	MADISON COUNTY TRANSIT DISTRICT HERITAGE BIKEWAY	PLAN AND PROFILE	F.A. RTE.	SECTION	COUNTY	TOTAL SHEETS	SHEET NO.	
		DRAWN - JDH			06-00016-00-BT	MADISON	310	60		
		CHECKED - WJB			CONTRACT NO. 97433					
		DATE = 11/30/12			FED. ROAD DIST. NO. [ILLINOIS] FED. AID PROJECT					
PLOT SCALE = #SCALE#			SCALE: 1" = 50'			SHEET NO. 29 OF 30 SHEETS			STA. 510+00.00 TO STA. 524+00.00	