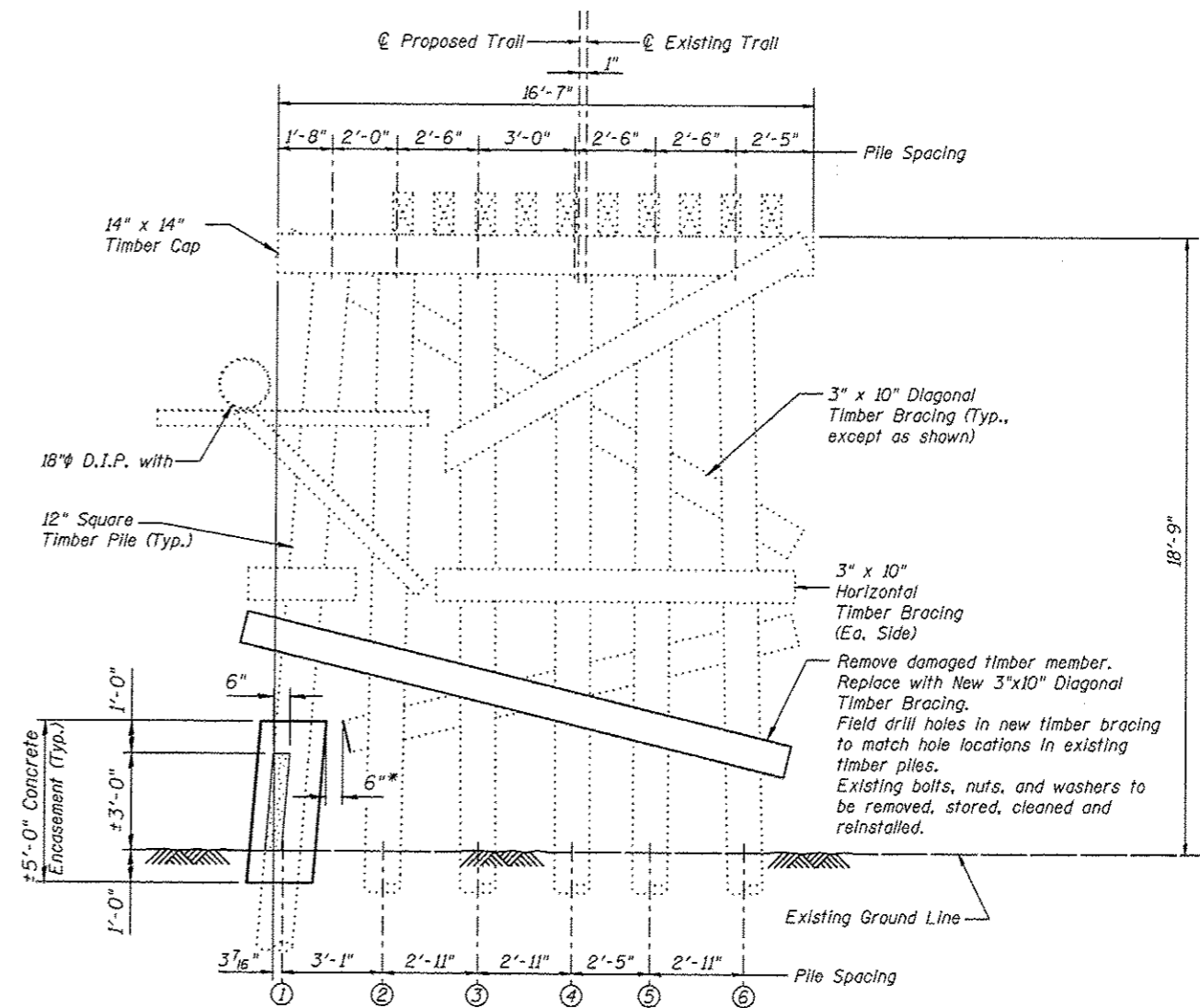


Payment for furnishing all material, labor and excavation necessary to construct the Concrete Encasement, including the casing, lag screws, concrete, reinforcement bars, bar splicers, partial removal of bracing, removal of deteriorated timber and all other appurtenances and incidental work as shown on this sheet, complete in place, will be considered completely covered by the contract unit price per cubic yard for Concrete Encasement.

**CONCRETE ENCASEMENT DETAILS**



**PIER 2**  
(Looking East)

Legend  
Area of Deterioration

**PIER 2**  
**BILL OF MATERIAL**

Item	Unit	Quantity
Concrete Encasement	Cu Yd	0.6
Treated Timber	F.B.M.	50

For Concrete Encasement Estimated Quantities, see Special Provisions.

Notes:

All dimensions are approximate.

Concrete Encasement shall extend above and below the damaged area of the pile a minimum of 1'-0".

All new timber members shown shall be included in the pay item Treated Timber.

\* Existing timber bracing that interferes with the Concrete Encasement shall be removed a max distance of 6" beyond the face of the Concrete Encasement. Cost Included with Concrete Encasement.

<p>Juneau Associates, Inc. P.C. CONSULTING ENGINEERS AND LAND SURVEYORS 1710 State Street, P.O. Box 1305 Dunbar City, 21116-1305 Phone: 410-321-1100 Fax: 410-321-0541</p>		<p>GLEN CARBON HERITAGE BIKE TRAIL OVER JUDY BRANCH MADISON COUNTY STATION 10B+17.70 STRUCTURE NO. 1</p>									
<p>REVISIONS</p> <table border="1"> <thead> <tr> <th>NO.</th> <th>DATE</th> <th>BY</th> <th>REMARKS</th> </tr> </thead> <tbody> <tr> <td> </td> <td> </td> <td> </td> <td> </td> </tr> </tbody> </table>				NO.	DATE	BY	REMARKS				
NO.	DATE	BY	REMARKS								
<p>SCALE: NOT TO SCALE, FOLLOW DIMENSIONS</p>		<p>DSN. BY: DB DATE: 10/18/12 SHEET</p> <p>DWN. BY: EER DATE: 10/18/12</p> <p>CHK'D: WNH DATE: 10/18/12</p>									
<p>DGN NAME:</p>		<p>JOB NO. E064403 DGN. NO. DP 810 SHEETS</p>									