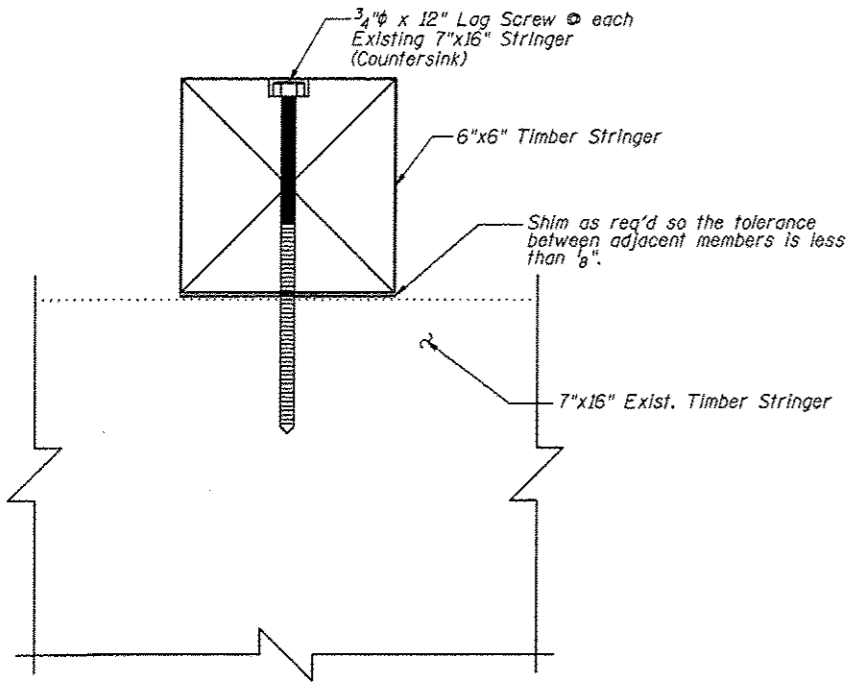
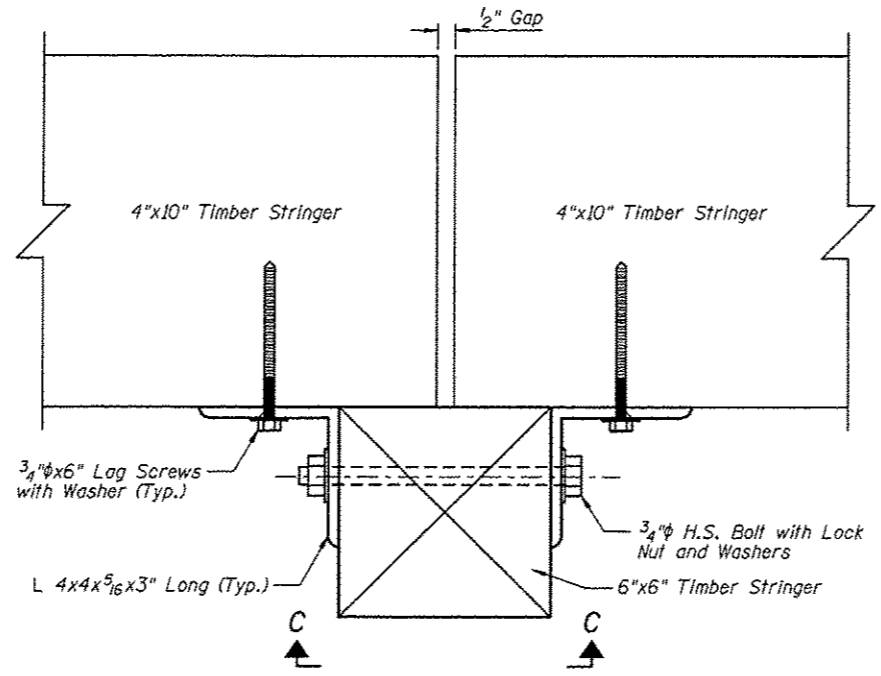


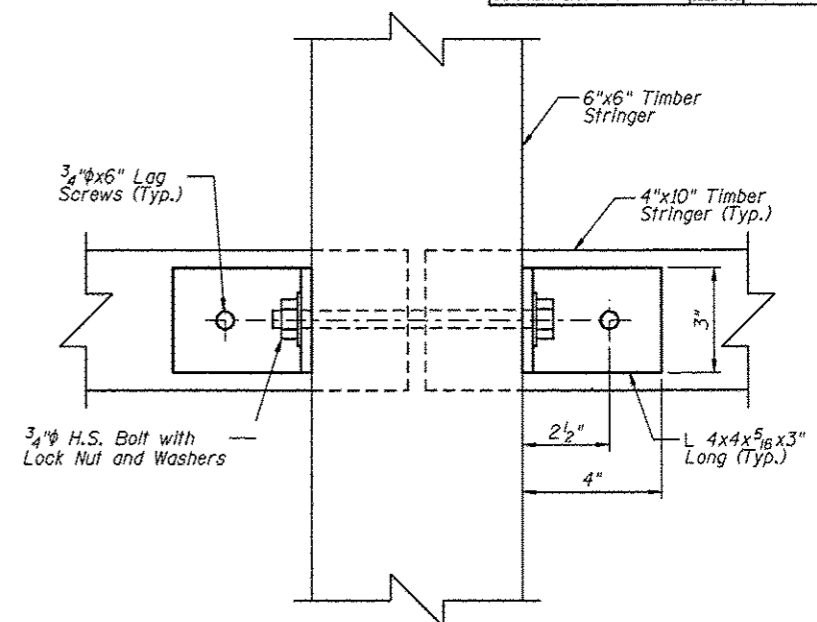
F.A.U. RTE.	SECTION	COUNTY	TOTAL SHEETS	SHEET NO.
	06-00016-00-BT	MADISON	310	172
FED. ROAD DIST. NO.	ILLINOIS CONTRACT NO. 97433			



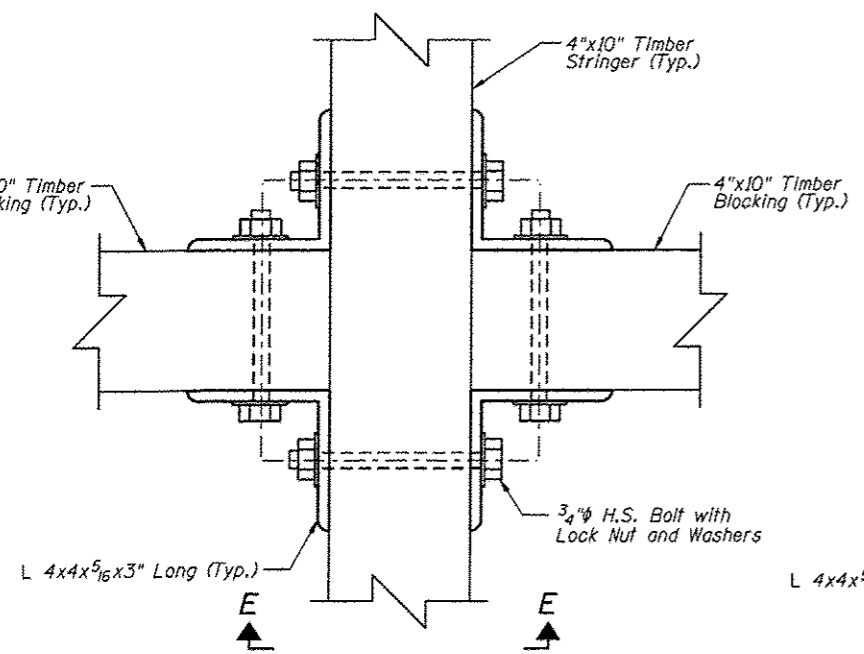
SECTION A-A



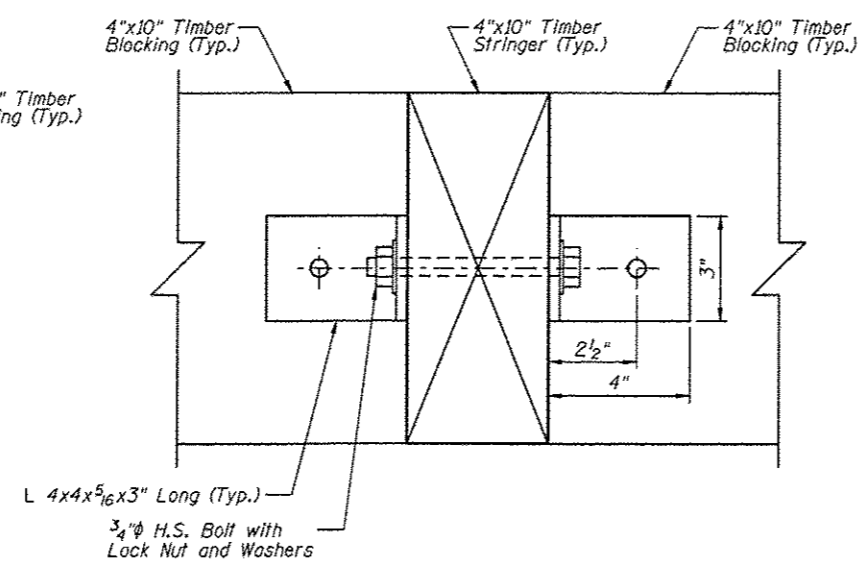
SECTION B-B  
(Section G-G Similar)



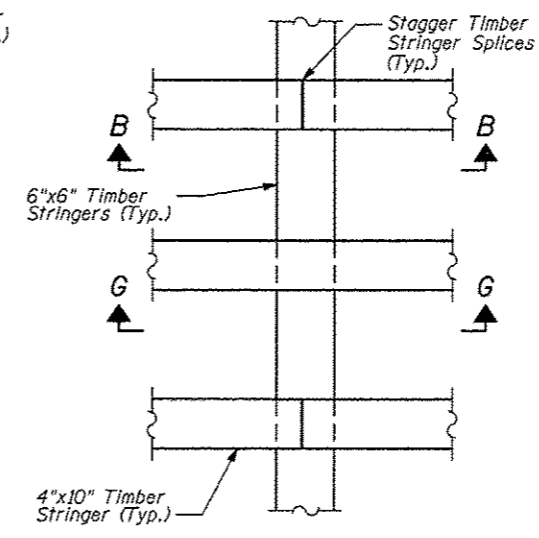
SECTION C-C



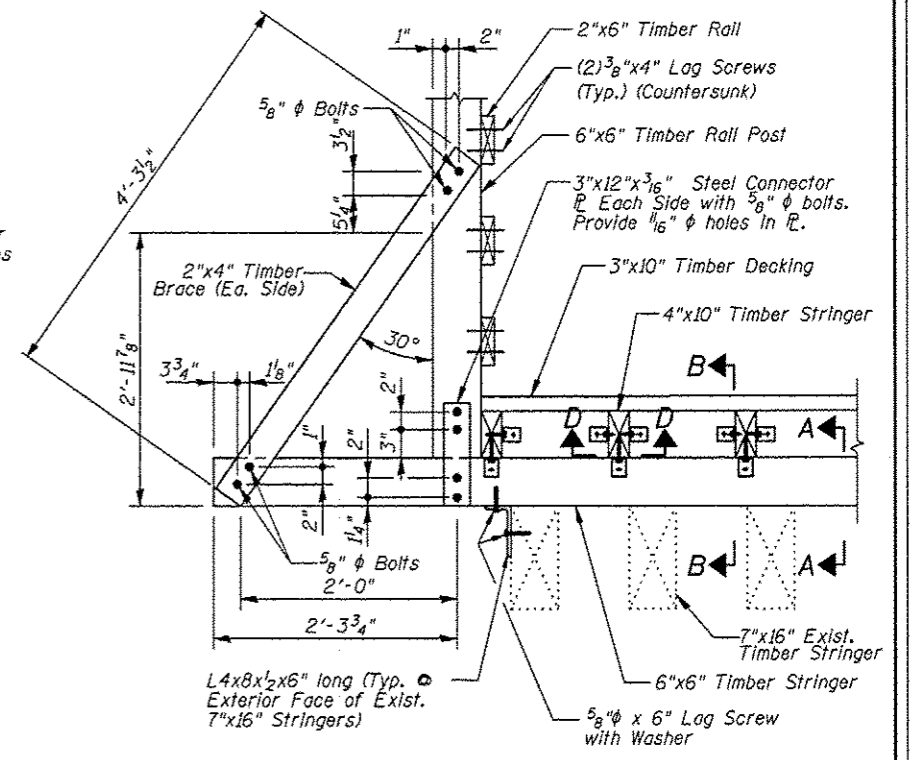
SECTION D-D



SECTION E-E



DETAIL A



DETAIL B

**SUPERSTRUCTURE  
BILL OF MATERIAL**

Item	Unit	Quantity
Treated Timber	F.B.M.	8085

Note:

All new timber members shown shall be included in the pay item Treated Timber.

<b>Juneau Associates, Inc. P.C.</b> CONSULTING ENGINEERS AND LAND SURVEYORS 1100 State Street, P.O. Box 1325 Oneida, Illinois 61758-1325 Phone: (312) 481-1400 Fax: (312) 481-5511		<b>GLEN CARBON HERITAGE BIKE TRAIL OVER JUDY BRANCH</b> MADISON COUNTY STATION 157+31.45 STRUCTURE NO. 3	
<b>REVISIONS</b> NO. DATE BY REMARKS		<b>SCALE:</b> NOT TO SCALE. FOLLOW DIMENSIONS	
DSN. BY: DB	DATE: 10/18/12	SHEET	
DWN. BY: EER	DATE: 10/18/12	172	
CHK'D: WWH	DATE: 10/18/12		
DGN NAME:	JOB NO. E064403	DGN. NO.	OF 810 SHEETS

10:02:24 AM 12/19/2012 M:\STRUCTURE\Drawings\Structure -03\VP-Proposed Structure 07-2012\04072 Connection Details.dgn  
 Printed