

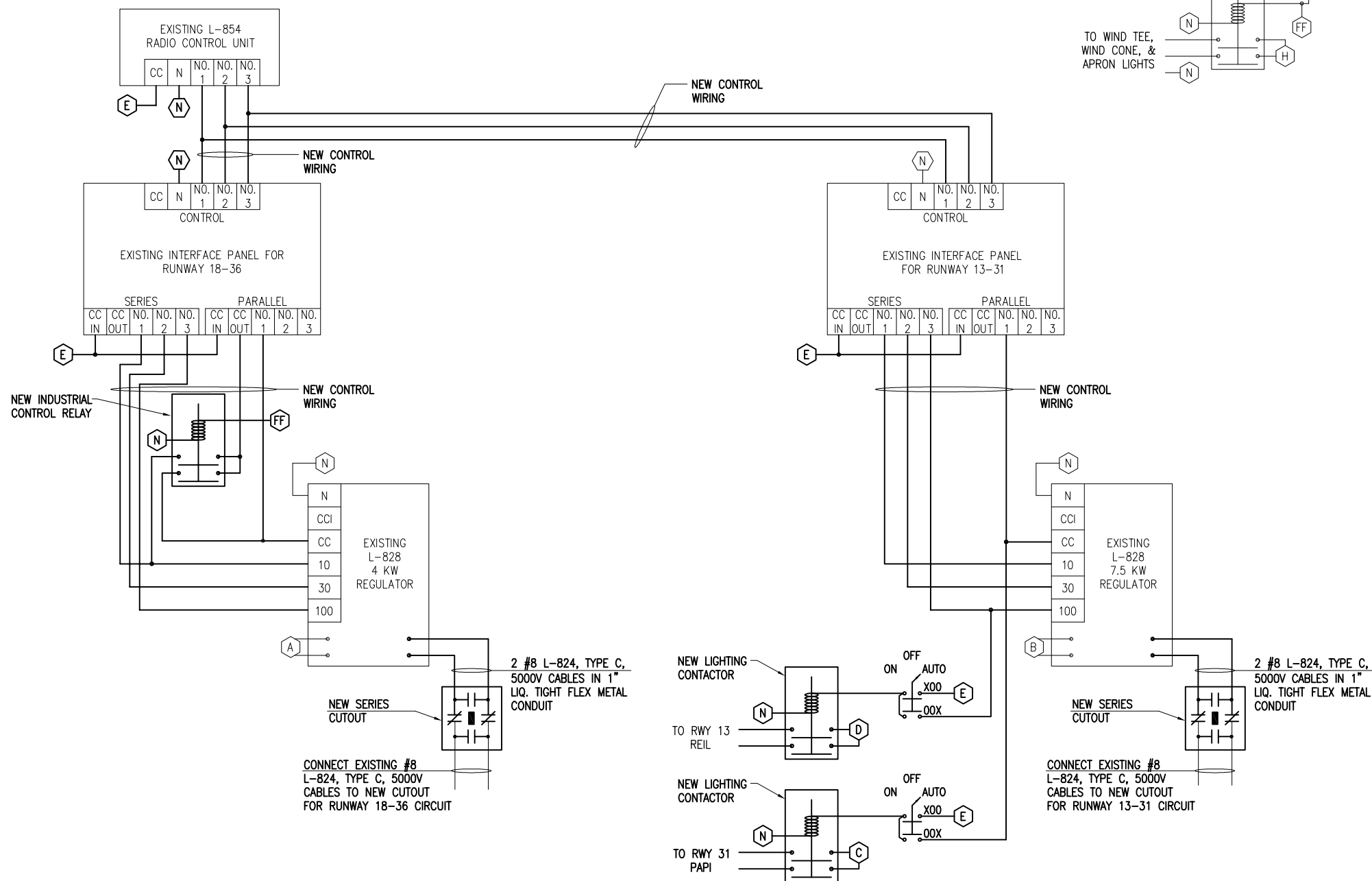
SHEET LEGEND

- (A) VAULT PANEL 240 VAC CKT 2,4 (RUNWAY 18-36 CCR)
- (B) VAULT PANEL 240 VAC CKT 6,8 (RUNWAY 13-31 CCR)
- (C) VAULT PANEL 240 VAC CKT 10,12 (RUNWAY 31 PAPI)
- (D) VAULT PANEL 240 VAC CKT 14,16 (RUNWAY 13 REILS)
- (E) VAULT PANEL 120 VAC CKT 18 (L-854 RADIO AND CCR CONTROL POWER)
- (F) VAULT PANEL 120 VAC CKT 1 (PHOTOCELL POWER)
- (FF) PHOTOCELL OUTPUT POWER
- (G) VAULT PANEL 120 VAC CKT 5 (BEACON)
- (H) VAULT PANEL 120/240 VAC CKT FOR WIND TEE, WIND CONE AND APRON FLOOD LIGHTS
- (N) N DESIGNATES NEUTRAL FROM THE RESPECTIVE PANEL THAT POWERS THE DEVICE. FOR CONTROL CIRCUIT INPUTS TO CCR'S N SHALL BE FROM THE RESPECTIVE INTERFACE PANEL CIRCUIT NEUTRAL CONNECTION.

NOTES

1. ALL ELECTRICAL EQUIPMENT WILL BE WIRED IN ACCORDANCE WITH THE SCHEMATIC WIRING DIAGRAM AND ALL APPLICABLE CODES.
2. ALL CONTROL CABLE WILL BE NO. 12 AWG COPPER, 600 VOLT CABLE.
3. ALL ELECTRICAL EQUIPMENT WILL BE PROPERLY LABELED AND ALL ELECTRICAL CABLES WILL BE TAGGED.
4. ALL ELECTRICAL CABLES INSIDE THE VAULT WILL BE IN CONDUIT OR DUCT.
5. THE RUNWAY 18-36 CIRCUIT SHALL BE CONTROLLED BY THE PHOTOCELL AND L-854 RADIO RECEIVER UNIT IN THE FOLLOWING MANNER:
 - PHOTOCELL ON - 10% BRIGHTNESS
 - 3 CLICKS - 10% BRIGHTNESS
 - 5 CLICKS - 30% BRIGHTNESS
 - 7 CLICKS - 100% BRIGHTNESS
6. THE RUNWAY 13-31 AND TAXIWAY CIRCUIT SHALL BE CONTROLLED BY THE L-854 RADIO RECEIVER UNIT IN THE FOLLOWING MANNER:
 - 3 CLICKS - 10% BRIGHTNESS, PAPI ON
 - 5 CLICKS - 30% BRIGHTNESS, PAPI TO REMAIN ON
 - 7 CLICKS - 100% BRIGHTNESS, PAPI TO REMAIN ON, REILS ON
7. L-854 RADIO RECEIVER UNIT SHALL BE ACTIVE 24 HOURS PER DAY.
8. L-854 RADIO RECEIVER UNIT, THE TWO INTERFACE PANELS FOR THE REGULATORS, PHOTOCELL, 4 KW CCR FOR RWY 18-36 AND 7.5 KW CCR FOR RWY 13-31 AND TAXIWAY ARE EXISTING.
9. EQUIPMENT GROUND WIRES SHALL BE INCLUDED WITH EACH NEW BRANCH/FEEDER CIRCUIT & THE NEW CONTROL CIRCUITS TO THE CONSTANT CURRENT REGULATORS.
10. CUTOUPS, ENLOSURES, AND ASSOCIATED 5000V SERIES CIRCUIT WIRING SHALL BE NEW. LIGHTING CONTACTOR PANEL AND ASSOCIATED POWER AND CONTROL WIRING SHALL BE NEW. CONTROL WIRING FOR CCR'S SHALL BE NEW.
11. COLOR CODING FOR THE CONTROL WIRING TO EACH CONSTANT CURRENT REGULATOR SHALL BE CONSISTENT FOR ALL REGULATORS. COLOR CODING SHALL BE AS FOLLOWS:

CC	-	RED
10%	-	ORANGE (WHERE APPLICABLE)
30%	-	YELLOW
100%	-	BLUE
NEUTRAL	-	WHITE
EQUIPT. GND	-	GREEN



AIRFIELD LIGHTING SCHEMATIC WIRING DIAGRAM

REVISION	DATE

MARSHALL COUNTY AIRPORT
LACON, ILLINOIS

BLOCK GRANT PROJ.: 3-17-0059-B15
ILL. PROJ.: C75-4223

Hanson Proj. No. 10A0051	Scale NONE	Date 12/14/12
Filename E-603.DWG	Scale NONE	Date 12/14/12
LAYOUT	KNL	08/26/10
DRAWN	MLH	09/02/10
REVIEWED	KNL/CAH	12/11/12

HANSON
Professional Services Inc. 2013
Hanson Professional Services Inc.
1525 South Sixth Street
Springfield, Illinois 62703-2886
Ph: (217) 788-2450 Fax: (217) 788-2503
www.hanson-inc.com
Offices Nationwide

PAVE, LIGHT AND MARK
805' EXTENSION
AIRFIELD LIGHTING CONTROL
WIRING SCHEMATIC

JAN 10, 2013 3:55 PM KINC400394
I:\AIRPORTS\MARSHALL\10A0051\AIRPORT\ SHEETS\E-603.DWG