

064

03-8-2019 LETTING ITEM 064

STATE OF ILLINOIS
DEPARTMENT OF TRANSPORTATION

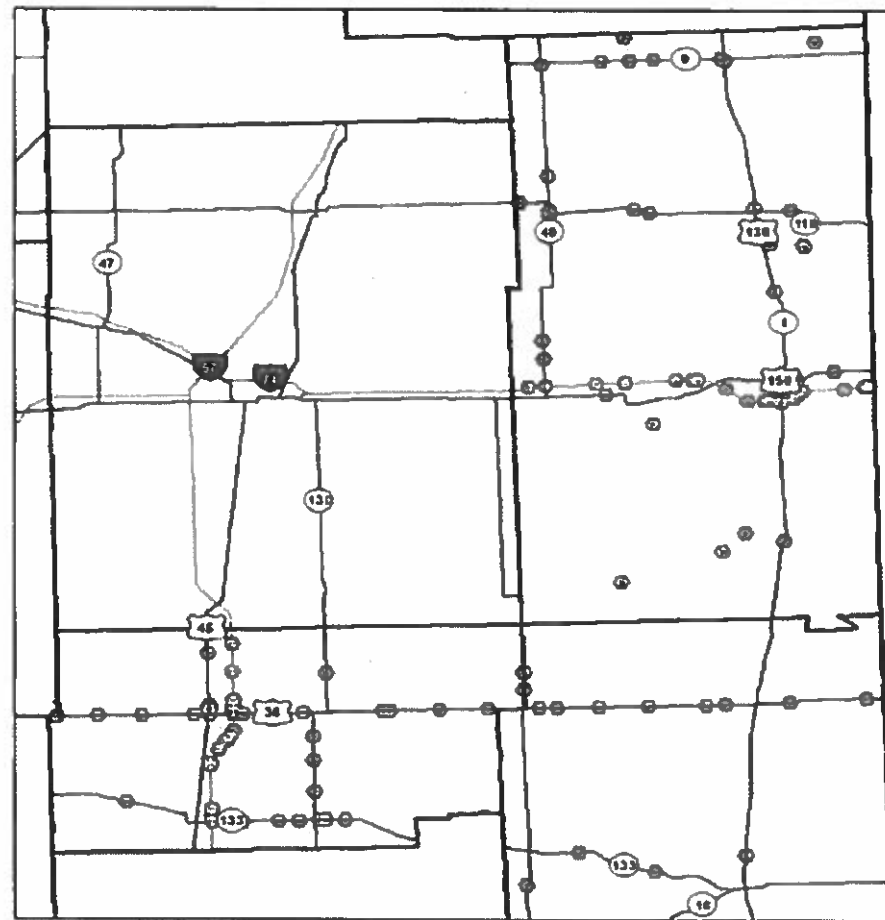
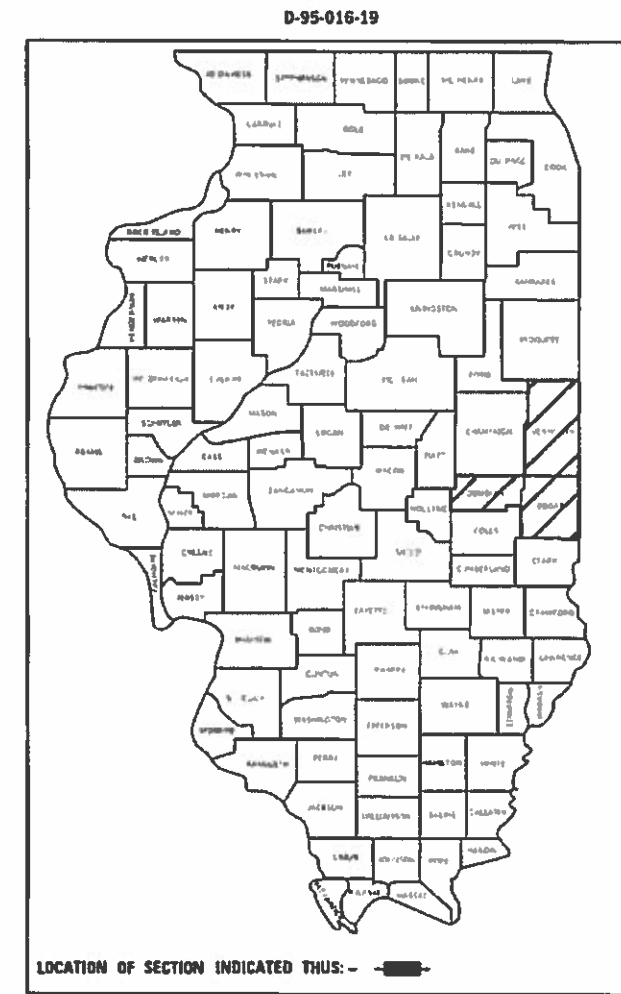
F.A. ATE.	SECTION	COUNTY	TOTAL SHEETS	SHEET NO.
VAR. FY19 BRIDGE DECK SEALING	VARIOUS	ILLINOIS	24	1
CONTRACT NO. 70D29				

FOR INDEX OF SHEETS, SEE SHEET NO. 2

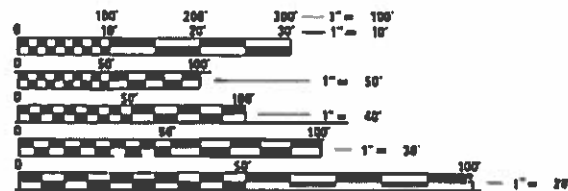
PROPOSED HIGHWAY PLANS

VARIOUS ROUTES
SECTION FY2019 BRIDGE DECK SEALING
PROJECT STP-6ZPI(058)
BRIDGE PRESERVATION
VARIOUS COUNTIES

C-95-019-19



GROSS LENGTH = x.xx FT. = x.xxx MILE
NET LENGTH = x.xx FT. = x.xxx MILE



FULL SIZE PLANS HAVE BEEN PREPARED USING STANDARD ENGINEERING SCALES. REDUCED SIZED PLANS WILL NOT CONFORM TO STANDARD SCALES. IN MAKING MEASUREMENTS ON REDUCED PLANS, THE ABOVE SCALES MAY BE USED.

J.U.L.I.E.
JOINT UTILITY LOCATION INFORMATION FOR EXCAVATION
1-800-892-0123
OR 811

PROJECT ENGINEER: TIM BRANDENBURG
PROJECT MANAGER

CONTRACT NO. 70D29

STATE OF ILLINOIS
DEPARTMENT OF TRANSPORTATION

SUBMITTED *November 2018*

[Signature]
REGIONAL ENGINEER

[Signature]
ENGINEER OF DESIGN AND ENVIRONMENT

[Signature]
DIRECTOR OF HIGHWAYS PROJECT IMPLEMENTATION

PRINTED BY THE AUTHORITY
OF THE STATE OF ILLINOIS

INDEX OF SHEETS

SHEET NO.	DESCRIPTION
1	COVER SHEET
2	INDEX OF SHEETS, GENERAL NOTES AND HIGHWAY STANDARDS
3 - 5	DOUGLAS COUNTY LOCATION MAP
6	EDGAR COUNTY LOCATION MAP
7 - 11	VERMILION COUNTY LOCATION MAP
12	SUMMARY OF QUANTITIES
13 - 17	TYPICAL APPLICATION SECTIONS
18 - 19	DOUGLAS COUNTY SCHEDULES
20	EDGAR COUNTY SCHEDULES
21 - 23	VERMILION COUNTY SCHEDULES
24	TC&P DEVICES (ROAD & SIDEROAD/STREET CLOSURES)

GENERAL NOTES

G.N.-100
ENGLISH UNITS OF MEASUREMENT SHALL GOVERN OVER AND SUPERSEDE ANY METRIC UNITS SHOWN IN THIS CONTRACT. WHERE INCLUDED, METRIC UNITS ARE FOR INFORMATION

G.N. – PAVEMENT MARKINGS AND MARKERS
EXISTING PAVEMENT MARKINGS AND RAISED REFLECTIVE PAVEMENT MARKERS SHALL BE TEMPORARILY COVERED PRIOR TO APPLICATION OF THE DECK SURFACE TREATMENT, TO PREVENT THE MATERIAL FROM BEING APPLIED TO THE MARKINGS AND MARKERS. THE TEMPORARY COVERING SHALL BE REMOVED AFTER APPLICATION OF THE DECK SURFACE TREATMENT AND PRIOR TO OPENING TO TRAFFIC. COST IS INCLUDED WITH THE DECK SURFACE TREATMENT SPECIFIED.

NO COMMITMENTS

LIST OF HIGHWAY STANDARDS

STANDARD NO.	DESCRIPTION
0000001-07	STANDARD SYMBOLS, ABBREVIATIONS AND PATTERNS
001006	DECIMAL OF AN INCH AND OF A FOOT
701201-05	LANE CLOSURE, 2 LANE, 2 WAY, DAY ONLY
701411-09	LANE CLOSURE, MULTILANE, AT ENTRANCES OR EXIT RAMP
701426-09	LANE CLOSURE, MULTILANE, INTERMITTENT OR MOVING OPERATIONS FOR SPEEDS >= 45 MPH
701427-05	LANE CLOSURE, MULTILANE, INTERMITTENT OR MOVING OPERATIONS FOR SPEEDS <= 40 MPH
701601-09	URBAN LANE CLOSURE, MULTILANE, 1W OR 2W WITH NONTRAVESABLE MEDIAN
701901-08	TRAFFIC CONTROL DEVICES

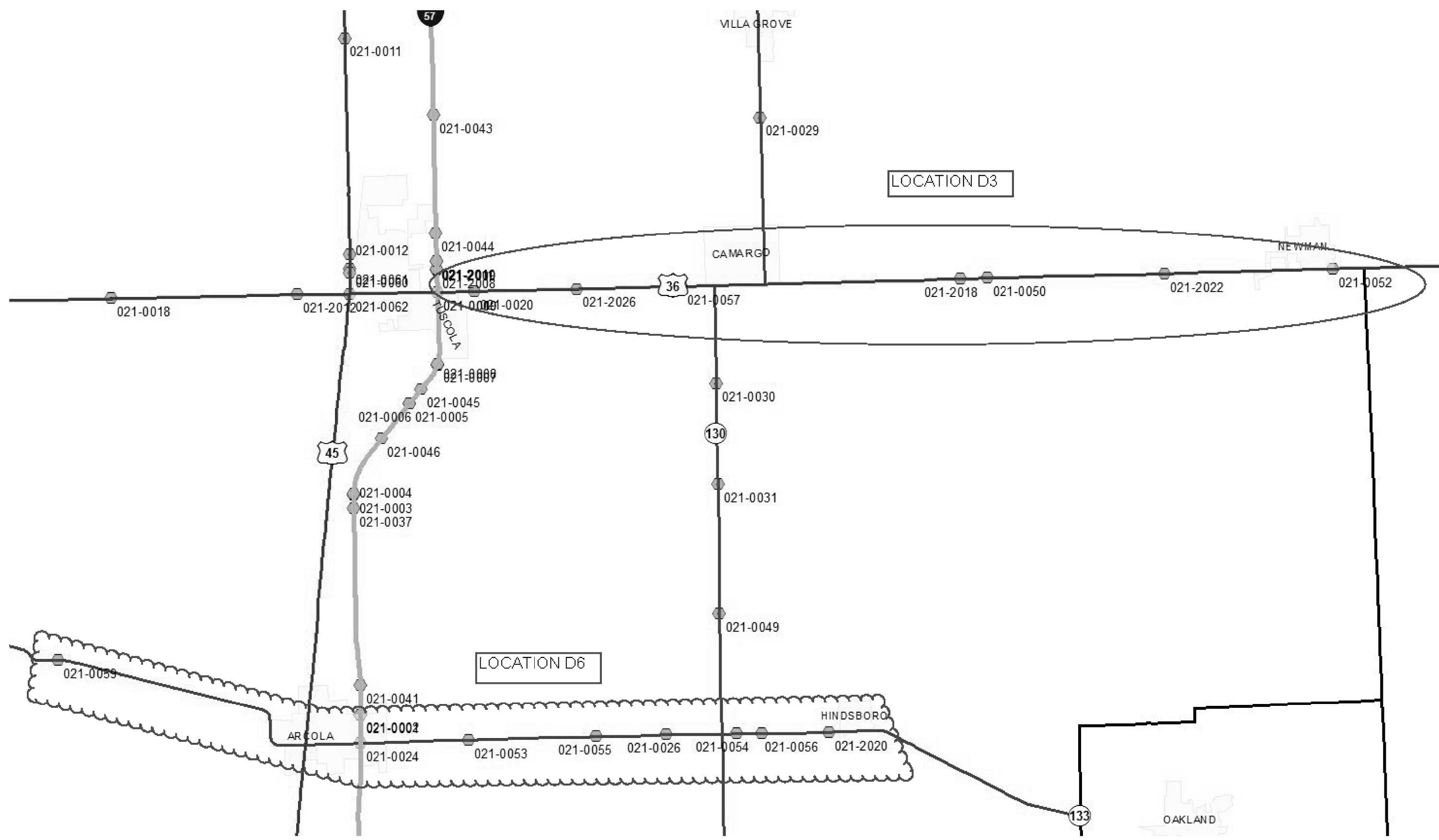
STATE OF ILLINOIS
DEPARTMENT OF TRANSPORTATION

INDEX OF SHEETS, GENERAL NOTES
& HIGHWAY STANDARDS

SCALE: SHEET 1 OF 1 SHEETS STA. TO STA.

F.A. RTE.	SECTION	COUNTY	TOTAL SHEETS	SHEET NO.
VAR.	FY19 BRIDGE DECK SEALING	VARIOUS	24	2
			CONTRACT NO. 70D29	
		ILLINOIS	FED. AID PROJECT	

MODEL: \\MODELS\MAME
 FILE NAME: P:\IL08\EBID\NTEC\Illinois\gov\PIV\DOT\Documents\DOT_Offices\Director_3\Projects\057029\CADD\DATA\Hyd\Drawings\057029-29-chn-map.dgn

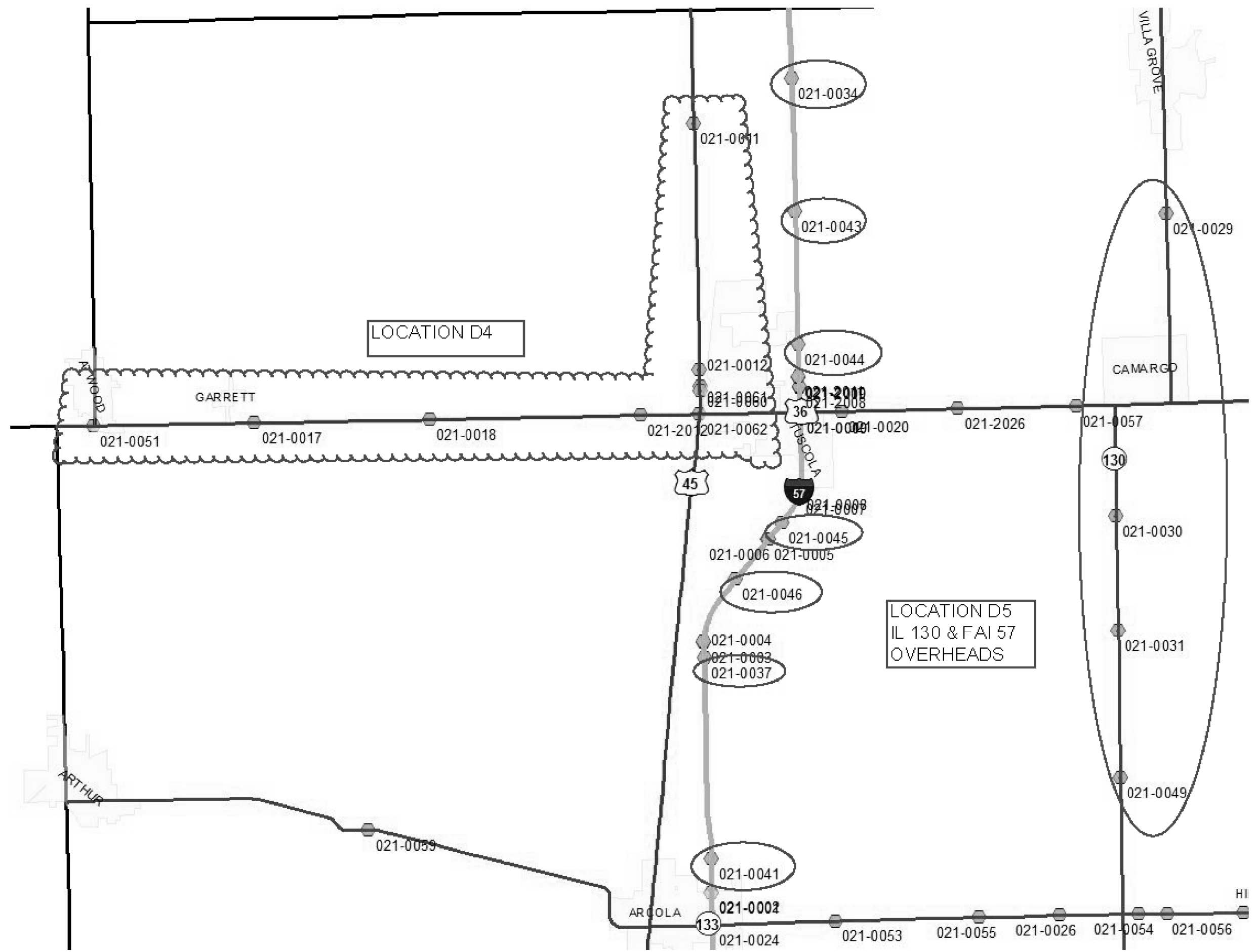


USER NAME = brandenbutj	DESIGNED - TJB	REVISED -
	DRAWN -	REVISED -
PLOT SCALE = 40,0000' / in.	CHECKED -	REVISED -
PLOT DATE = 11/27/2018	DATE - 10/9/2018	REVISED -

**STATE OF ILLINOIS
 DEPARTMENT OF TRANSPORTATION**

DOUGLAS COUNTY LOCATION MAP			
SCALE:	SHEET 2	OF 9 SHEETS	STA. TO STA.

F.A. RTE.	SECTION	COUNTY	TOTAL SHEETS	SHEET NO.
VAR.	FY19 BRIDGE DECK SEALING	VARIOUS	24	4
			CONTRACT NO. 70D29	
ILLINOIS FED. AID PROJECT				



MODEL: \\MODELNAME
 FILE NAME: \\FILENAME
 PROJECT: \\PROJECT
 OFFICE: \\OFFICE
 DATE: \\DATE

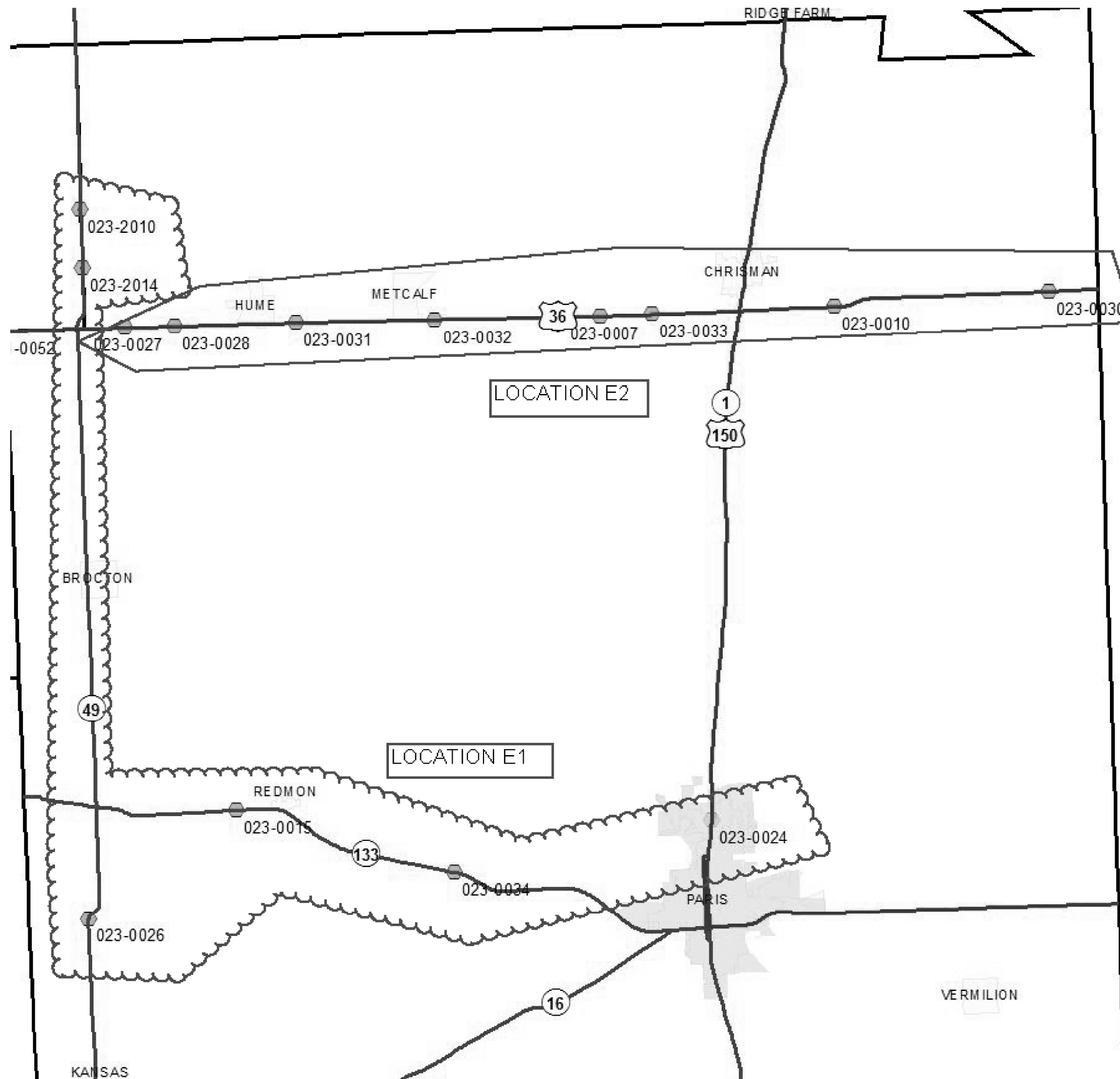
USER NAME = brandenburgj	DESIGNED - TJB	REVISED -
	DRAWN -	REVISED -
PLOT SCALE = 40,0000' / in.	CHECKED -	REVISED -
PLOT DATE = 11/27/2018	DATE - 10/9/2018	REVISED -

**STATE OF ILLINOIS
DEPARTMENT OF TRANSPORTATION**

DOUGLAS COUNTY LOCATION MAP

SCALE: SHEET 3 OF 9 SHEETS STA. TO STA.

F.A. RTE.	SECTION	COUNTY	TOTAL SHEETS	SHEET NO.
VAR.	FY19 BRIDGE DECK SEALING	VARIOUS	24	5
CONTRACT NO. 70D29			ILLINOIS FED. AID PROJECT	



LOCATION E2

LOCATION E1

MODEL: \\MODELNAME
 FILE NAME: \\FILENAME
 PROJECT: \\PROJECT
 CADD: \\CADD
 DRAWING: \\DRAWING

USER NAME = brandenburgj	DESIGNED - TJB	REVISED -
	DRAWN -	REVISED -
PLOT SCALE = 40,0000 ' / in.	CHECKED -	REVISED -
PLOT DATE = 11/27/2018	DATE - 10/9/2018	REVISED -

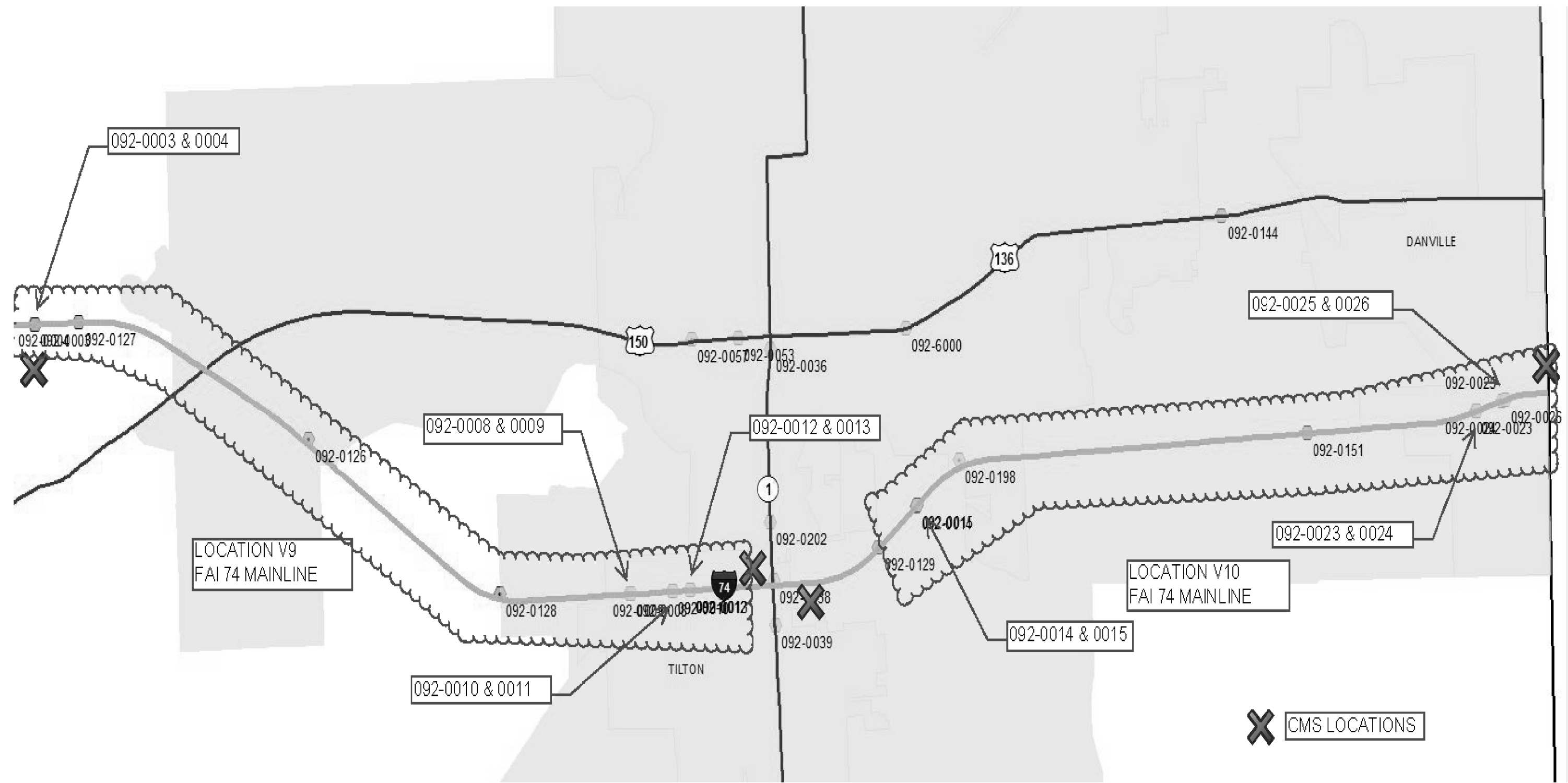
**STATE OF ILLINOIS
DEPARTMENT OF TRANSPORTATION**

EDGAR COUNTY LOCATION MAP

SCALE: SHEET 4 OF 9 SHEETS STA. TO STA.

F.A. RTE.	SECTION	COUNTY	TOTAL SHEETS	SHEET NO.
VAR.	FY19 BRIDGE DECK SEALING	VARIOUS	24	6
			CONTRACT NO. 70D29	
ILLINOIS FED. AID PROJECT				

MODEL: \\MODELNAME
 FILE NAME: \\FILEPATH\PROJECTS\7029\CADD\DATA\HYDRA\ICD5702929-ctc-naps.dgn



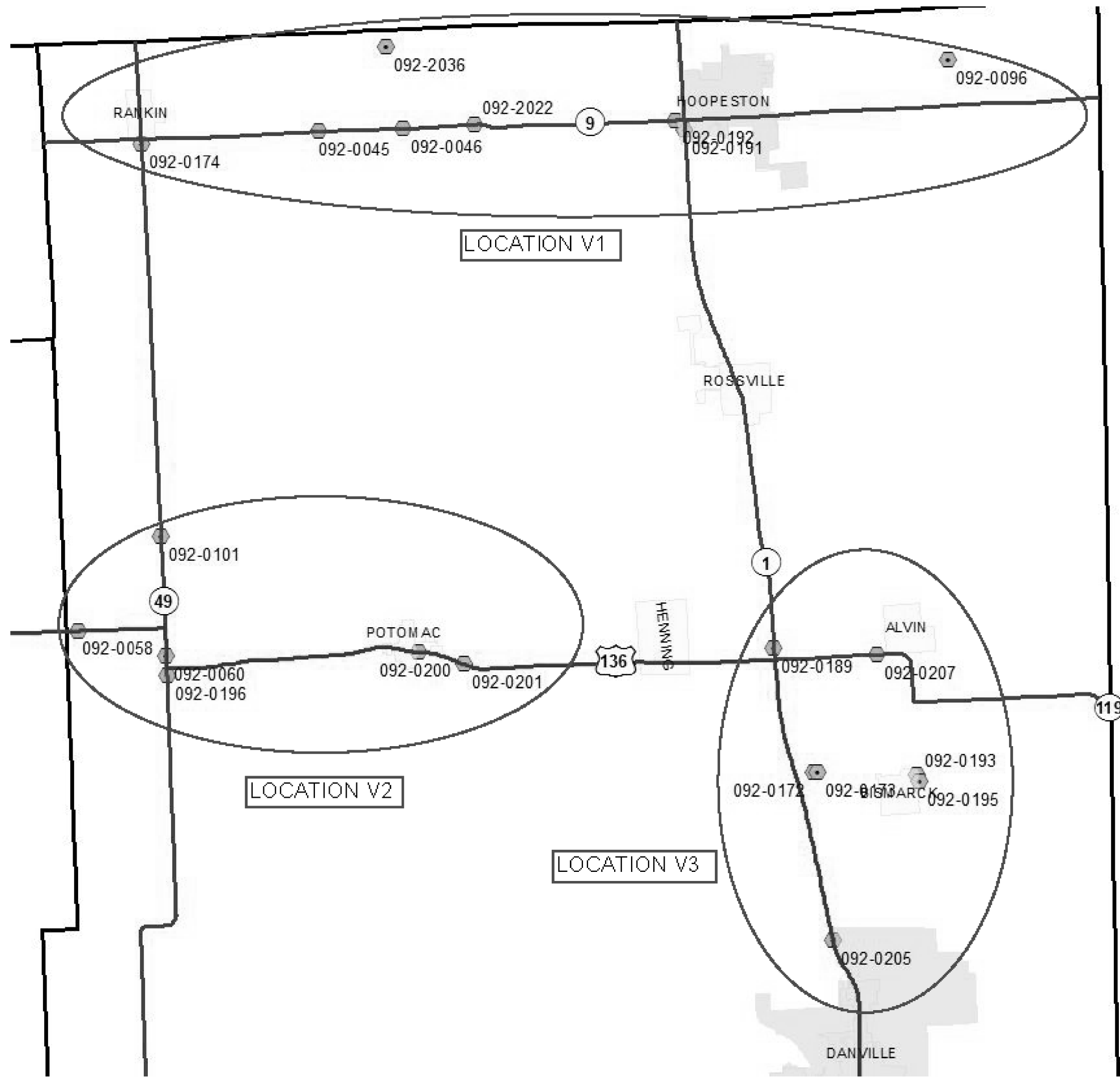
USER NAME = brandenburgj	DESIGNED - TJB	REVISED -
DRAWN -	REVISOR -	REVISED -
PLOT SCALE = 40,0000' / in.	CHECKED -	REVISED -
PLOT DATE = 11/27/2018	DATE - 10/9/2018	REVISED -

**STATE OF ILLINOIS
 DEPARTMENT OF TRANSPORTATION**

VERMILION COUNTY LOCATION MAP

SCALE: SHEET 5 OF 9 SHEETS STA. TO STA.

F.A. RTE.	SECTION	COUNTY	TOTAL SHEETS	SHEET NO.
VAR.	FY19 BRIDGE DECK SEALING	VARIOUS	24	7
			CONTRACT NO. 70D29	
		ILLINOIS	FED. AID PROJECT	



MODEL: \\MODELNAME
 FILE NAME: \\FILENAME
 PROJECT: \\PROJECTNAME
 OFFICE: \\OFFICE
 DATE: \\DATE
 DRAWN BY: \\DRAWNBY
 CHECKED BY: \\CHECKEDBY
 DATE: \\DATE

USER NAME = brandenbutj	DESIGNED - TJB	REVISED -
	DRAWN -	REVISED -
PLOT SCALE = 40,0000' / in.	CHECKED -	REVISED -
PLOT DATE = 11/27/2018	DATE - 10/9/2018	REVISED -

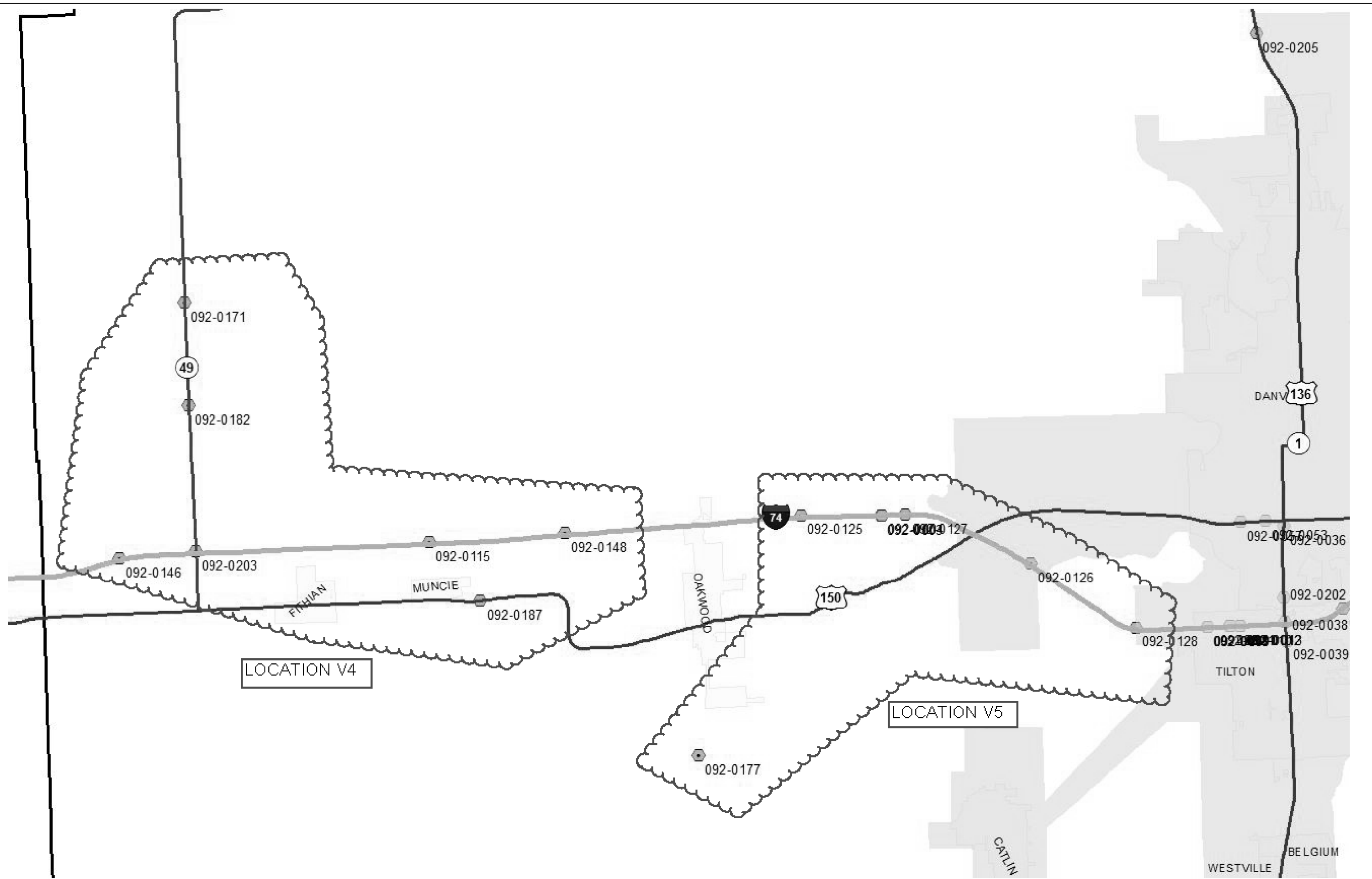
**STATE OF ILLINOIS
DEPARTMENT OF TRANSPORTATION**

VERMILION COUNTY LOCATION MAP

SCALE: SHEET 6 OF 9 SHEETS STA. TO STA.

F.A. RTE.	SECTION	COUNTY	TOTAL SHEETS	SHEET NO.
VAR.	FY19 BRIDGE DECK SEALING	VERMILION	24	8
			CONTRACT NO. 70D29	
ILLINOIS FED. AID PROJECT				

MODEL: \\MODELS\MAME
 FILE NAME: \\PUL\BRENNDN\TEC\Illinois\gov\PIVDOT\Documents\DOT_Offices\Director_5\Projects\0570029\CADD\DATA\Hydro\AIRC\0570029-05-01-naps.dgn



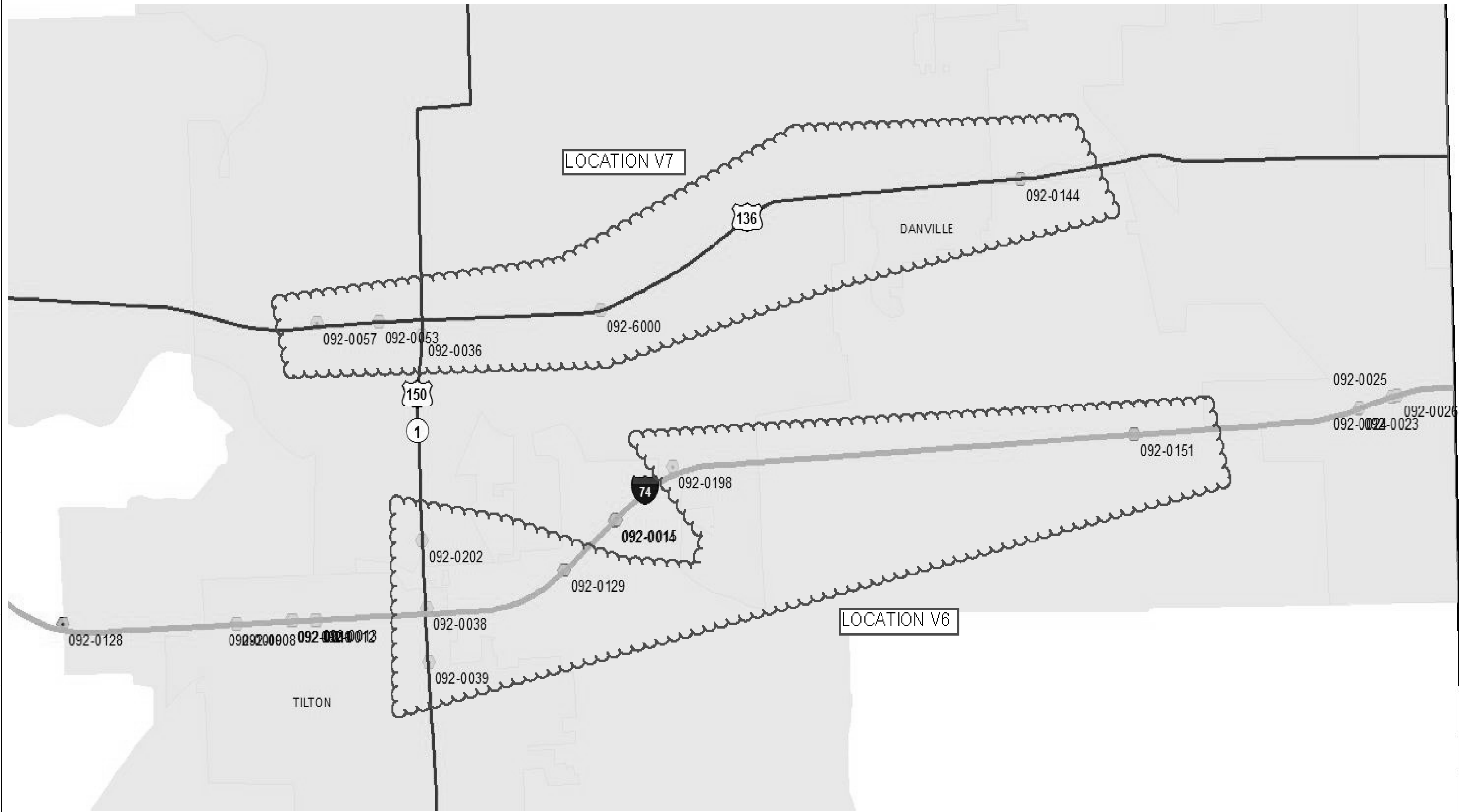
USER NAME = brandenburgj	DESIGNED - TJB	REVISED -
	DRAWN -	REVISED -
PLOT SCALE = 40,0000 ' / in.	CHECKED -	REVISED -
PLOT DATE = 11/27/2018	DATE - 10/9/2018	REVISED -

**STATE OF ILLINOIS
 DEPARTMENT OF TRANSPORTATION**

VERMILION COUNTY LOCATION MAP

SCALE: SHEET 7 OF 9 SHEETS STA. TO STA.

F.A. RTE.	SECTION	COUNTY	TOTAL SHEETS	SHEET NO.
VAR.	FY19 BRIDGE DECK SEALING	VARIOUS	24	9
			CONTRACT NO. 70D29	
ILLINOIS FED. AID PROJECT				



LOCATION V7

LOCATION V6

DANVILLE

TILTON

MODEL: \\MODELNAME
 FILE NAME: \\FILENAME
 PROJECT: \\PROJECTNAME
 OFFICE: \\OFFICE
 DATE: \\DATE
 DRAWN BY: \\DRAWNBY
 CHECKED BY: \\CHECKEDBY
 DESIGNED BY: \\DESIGNEDBY
 REVISIONS: \\REVISIONS

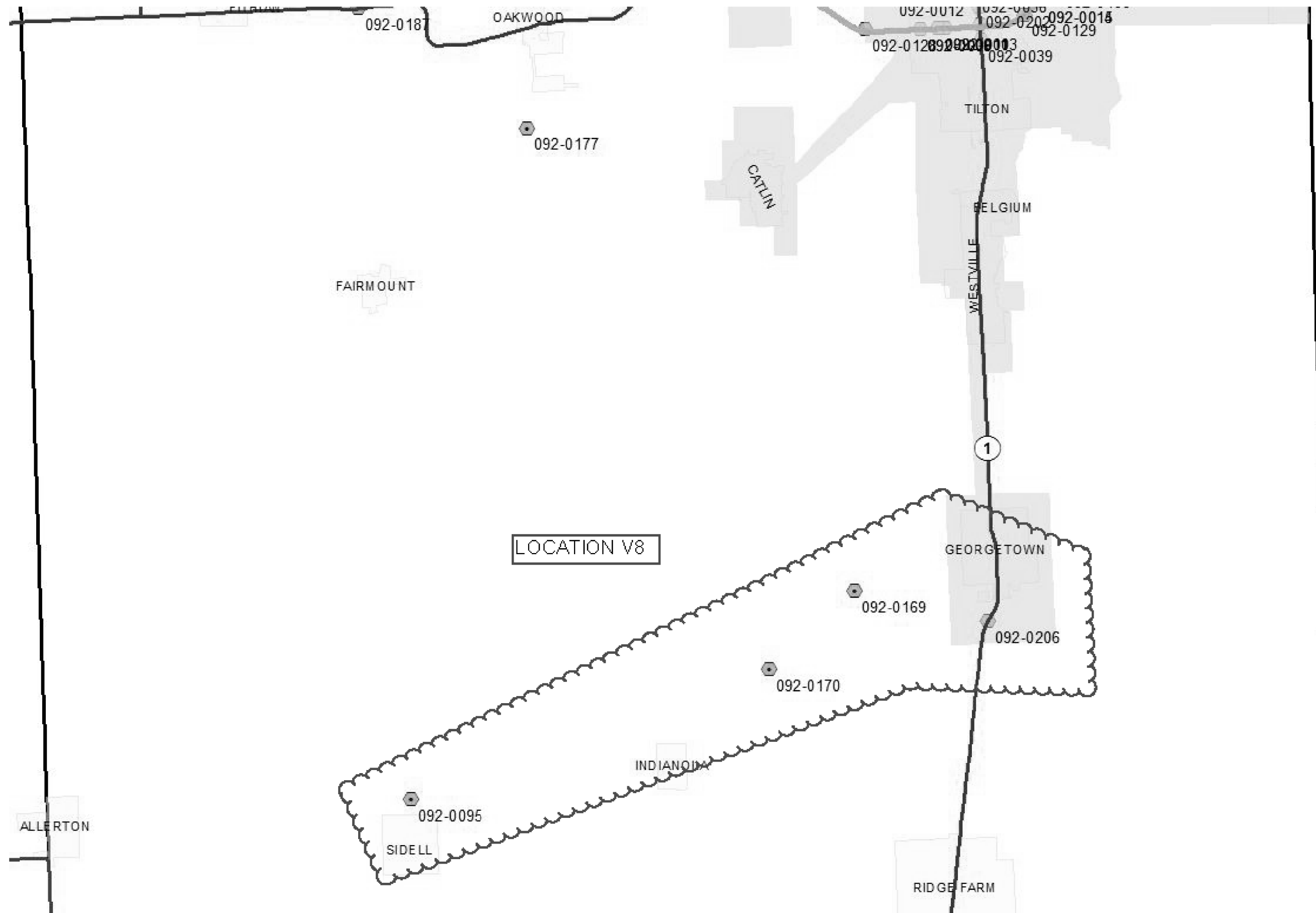
USER NAME = brandenburgj	DESIGNED - TJB	REVISED -
	DRAWN -	REVISED -
PLOT SCALE = 40,0000' / in.	CHECKED -	REVISED -
PLOT DATE = 11/27/2018	DATE - 10/9/2018	REVISED -

**STATE OF ILLINOIS
DEPARTMENT OF TRANSPORTATION**

VERMILION COUNTY LOCATION MAP

SCALE: SHEET 8 OF 9 SHEETS STA. TO STA.

F.A. RTE.	SECTION	COUNTY	TOTAL SHEETS	SHEET NO.
VAR.	FY19 BRIDGE DECK SEALING	VARIOUS	24	10
			CONTRACT NO. 70D29	
		ILLINOIS	FED. AID PROJECT	



LOCATION V8

MODEL: \\MODELNAME
 FILE NAME: \\FILENAME
 PROJECT: \\PROJECT
 OFFICE: \\OFFICE
 DATE: \\DATE
 DRAWN BY: \\DRAWNBY
 CHECKED BY: \\CHECKEDBY
 DATE: \\DATE

USER NAME = brandenburgj	DESIGNED - TJB	REVISED -
PLOT SCALE = 40,0000' / in.	CHECKED -	REVISED -
PLOT DATE = 11/27/2018	DATE - 10/9/2018	REVISED -

**STATE OF ILLINOIS
DEPARTMENT OF TRANSPORTATION**

VERMILION COUNTY LOCATION MAP

SCALE: SHEET 9 OF 9 SHEETS STA. TO STA.

F.A. RTE.	SECTION	COUNTY	TOTAL SHEETS	SHEET NO.
VAR.	FY19 BRIDGE DECK SEALING	VERMILION	24	11
			CONTRACT NO. 70D29	
ILLINOIS FED. AID PROJECT				

LOCATION OF WORK:

VARIOUS COUNTIES
VARIOUS ROUTES

FUNDING BREAKOUT:

SECTION FY2019 BRIDGE DECK SEALING
INTERSTATE, MULTI-LANE AND TWO-LANE HIGHWAYS

CONSTRUCTION TYPE CODE:

80% FEDERAL / 20% STATE

BRIDGE PRESERVATION

0047

CODE NO	ITEM	UNIT	TOTAL QUANTITY	QUANTITY
67100100	MOBILIZATION	L SUM	1.0	1.0
70100420	TRAFFIC CONTROL AND PROTECTION, STANDARD 701411	EACH	20.0	20.0
70100450	TRAFFIC CONTROL AND PROTECTION, STANDARD 701201	L SUM	1.0	1.0
70102630	TRAFFIC CONTROL AND PROTECTION, STANDARD 701601	L SUM	1.0	1.0
70107025	CHANGEABLE MESSAGE SIGN	CAL DA	56.0	56.0
X5870015	BRIDGE DECK CONCRETE SEALER	SQ FT	1,232,834.0	1,232,834.0

NO SPECIALTY ITEMS

MODEL: S:\MODELS\JLV\118...
FILE: S:\MODELS\JLV\118...
PROJECT: S:\MODELS\JLV\118...
DRAWING: S:\MODELS\JLV\118...
DATE: 12/11/2018

USER NAME = brandenburgj	DESIGNED - TJB	REVISED -
PLOT SCALE = 40.0000' / in.	CHECKED -	REVISED -
PLOT DATE = 12/11/2018	DATE - 12/11/2018	REVISED -

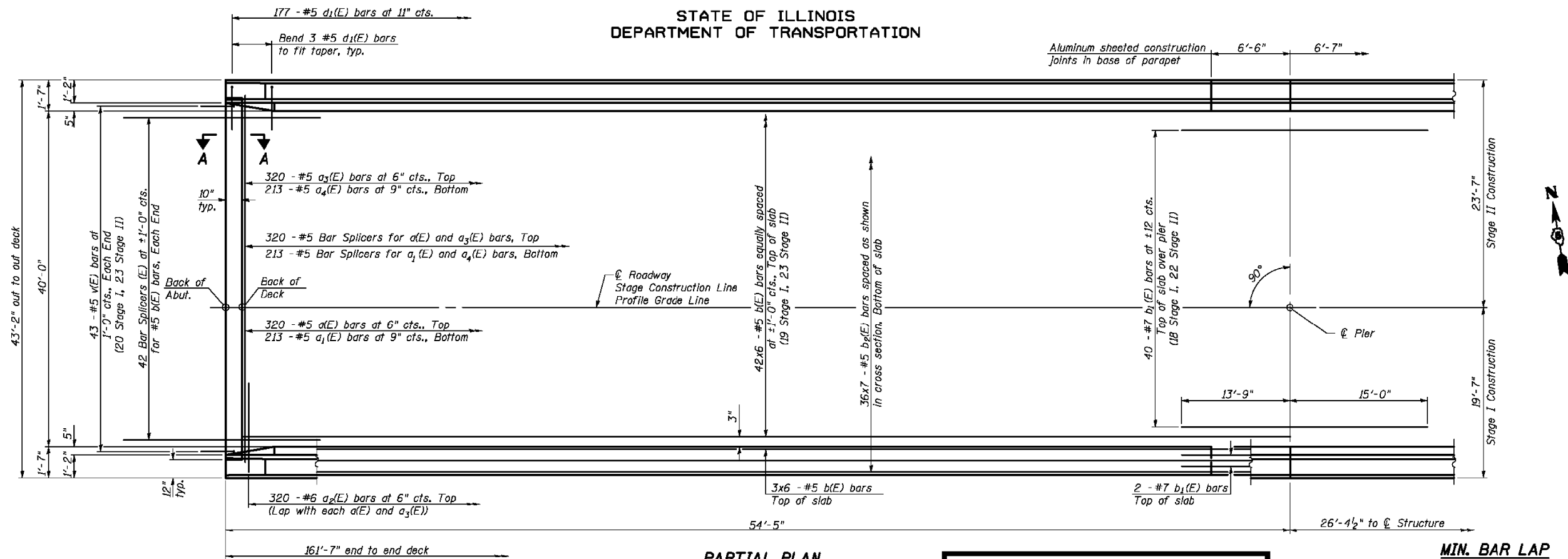
STATE OF ILLINOIS
DEPARTMENT OF TRANSPORTATION

SUMMARY OF QUANTITIES

SCALE: SHEET 1 OF 1 SHEETS STA. TO STA.

PA RTE.	SECTION	COUNTY	TOTAL SHEETS	SHEET NO.
VAR.	FY'19 BRIDGE DECK SEALING	VARIOUS	24	12
CONTRACT NO. 70D29			ILLINOIS FED. AID PROJECT	

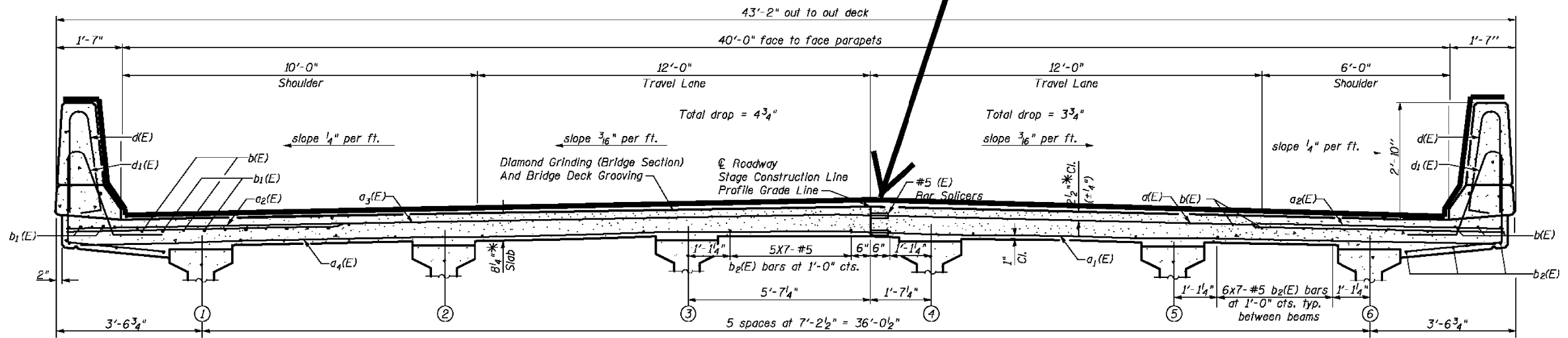
STATE OF ILLINOIS
DEPARTMENT OF TRANSPORTATION



PARTIAL PLAN

PROPOSED BRIDGE DECK CONCRETE SEALER

MIN. BAR LAP
#5 Bar = 1'-8"



TYPICAL SECTION; FOUR-LANE WITH PARAPET; DUAL STRUCTURES

NEAR PIER

NEAR MIDSPAN

SUPERSTRUCTURE
I-74 OVER LITTLE KICKAPOO CREEK
STRUCTURE NO. 057-0120
AND 057-0121

STRAND ASSOCIATES, INC.

DESIGNED	RRD
CHECKED	AJS
DRAWN	KAS
CHECKED	JAR

Notes:
See Sheet 12 of 27 for superstructure details and Bill of Material.
Bars indicated thus 20 x 3-#5 etc. indicates 20 lines of bars with 3 lengths per line.
See Sheet 12 of 27 for parapet reinforcement.
See Sheet 27 of 27 for bar splicers details.
See Sheet 11 of 27 for diaphragm details.

CROSS SECTION
(Looking Upstation Westbound)
(Looking Downstation Eastbound)

* Prior to grinding

SHEET NO. 10 27 SHEETS	F.A.I. RTE. 74	SECTION (57-21B)BR	COUNTY MCLEAN	TOTAL SHEETS 61	SHEET NO. 22
	SUPERSTRUCTURE DETAILS (1 OF 3)			CONTRACT NO. 70641	
FED. ROAD DIST. NO. 7 ILLINOIS FED. AID PROJECT					

STATE OF ILLINOIS
DEPARTMENT OF TRANSPORTATION

TYPICAL SECTIONS

SCALE: SHEET 1 OF 5 SHEETS STA. TO STA.

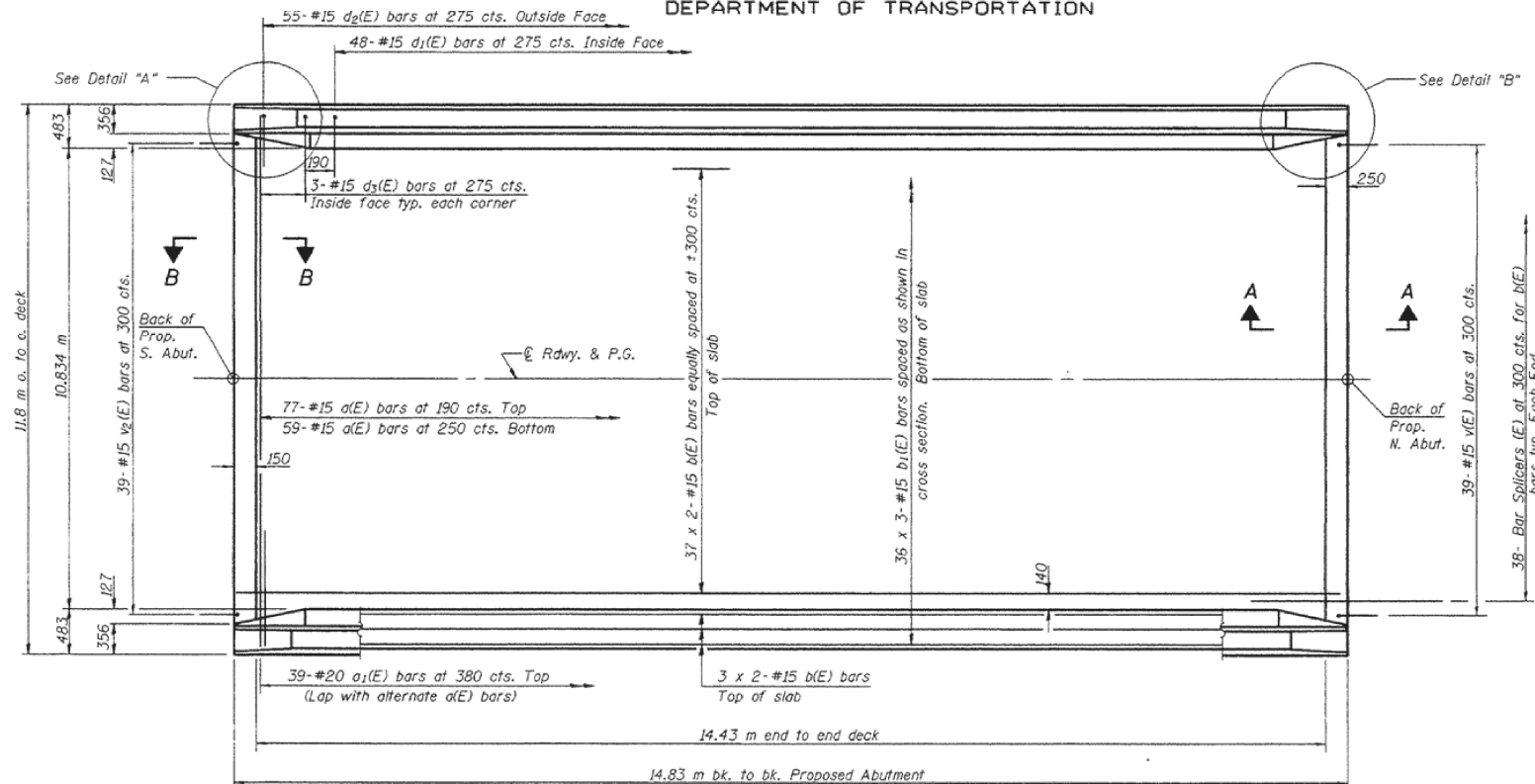
F.A.I. RTE.	SECTION	COUNTY	TOTAL SHEETS	SHEET NO.
VAR. F919 BRIDGE DECK SEALING	VARIOUS	ILLINOIS	24	13
CONTRACT NO. 70D29				

MODEL: \\MODELNAME
FILE: \\NAME: \\PROJECTS\0570120\21B\CADD\DATA\HYDRAULIC\0570120-21B-deck.dgn

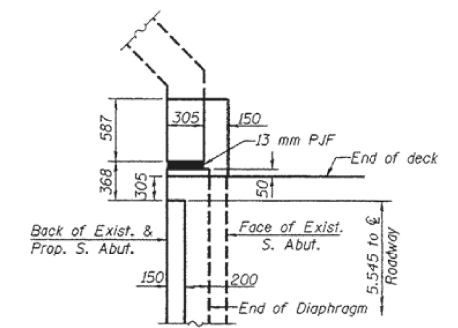
STATE OF ILLINOIS
DEPARTMENT OF TRANSPORTATION

ROUTE NO.	SECTION	COUNTY	TOTAL SHEETS	SHEET NO.
F.A.S. RTE.	FY19 BRIDGE DECK SEALING	VARIOUS	24	15
PROJECT NO.	DATE	PROJECT		
			CONTRACT NO. 70D29	

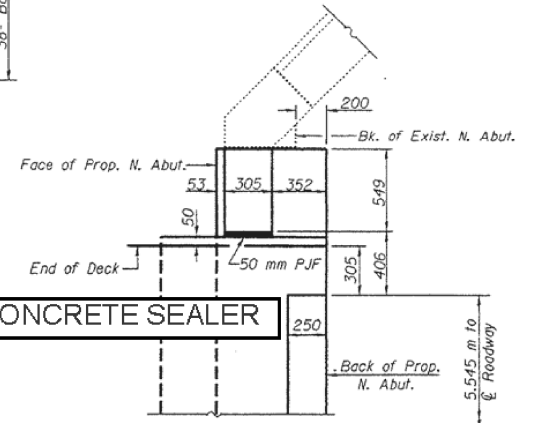
SHEET NO. 3
13 SHEET
90948



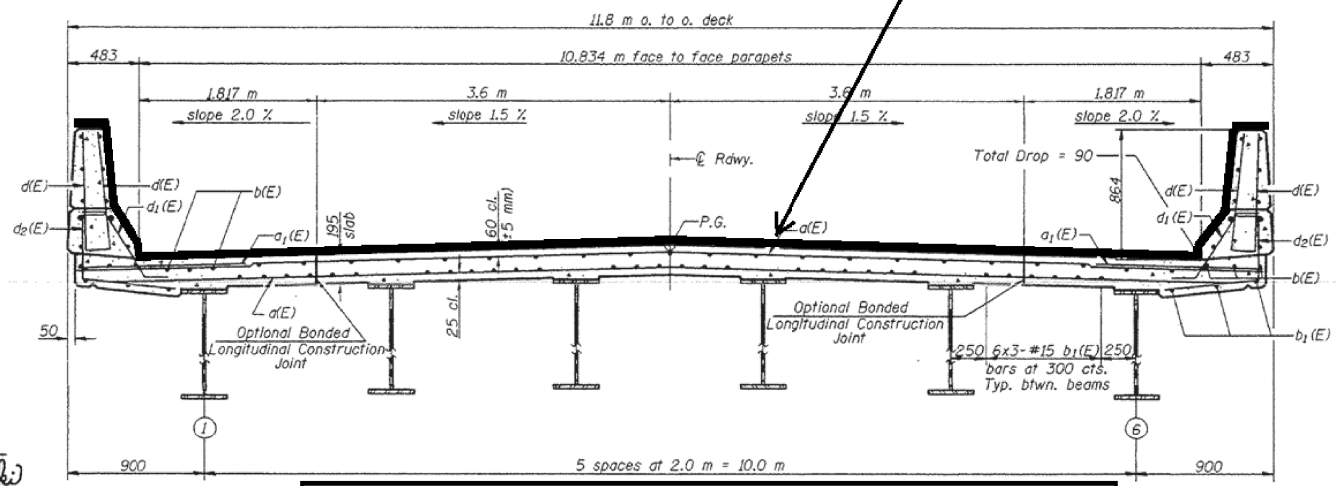
PLAN



DETAIL "A"
Parapet and Approach not shown.



DETAIL "B"
Parapet and Approach not shown.



TYPICAL SECTION; TWO-LANE TWO-WAY WITH PARAPET
CROSS SECTION
(Looking North)

MIN. BAR LAPS
#15 bars = 640

Notes: See Sheet 4 of 13 for superstructure details and Bill of Material.
Reinforcement bars designated (E) shall be epoxy coated.
Bars indicated thus 1 x 3-#15 etc. indicates 1 line of bars with 3 lengths per line.
See Sheet 4 of 13 for parapet reinforcement.
All dimensions are in millimeters (mm) except as noted.
See sheet 12 of 13 for bar splicer details.

SUPERSTRUCTURE
F.A.S. RTE. 1671 SEC. 22BR-1
DOUGLAS COUNTY
STATION 22+618.644
STRUCTURE NO. 021-0011

DESIGNED	Jonas H. Petty	January 30	2018
CHECKED	Mark D. Shaffer		
DRAWN	R. Sommer		
CHECKED	J.D.P./M.D.S.		
EXAMINED	Thomas J. Domagalicki		
PASSED	Ralph E. Anderson		

MODEL: I:\MODELS\NAME: FILE NAME: P:\PROJECTS\70D29\CADD\DATA\HYDRA\ICD570D29-CH-DECK.DWG

USER NAME = brandenburgjt	DESIGNED - TJB	REVISED -
PLOT SCALE = 40.0000' / in.	CHECKED -	REVISED -
PLOT DATE = 11/27/2018	DATE - 10/9/2018	REVISED -

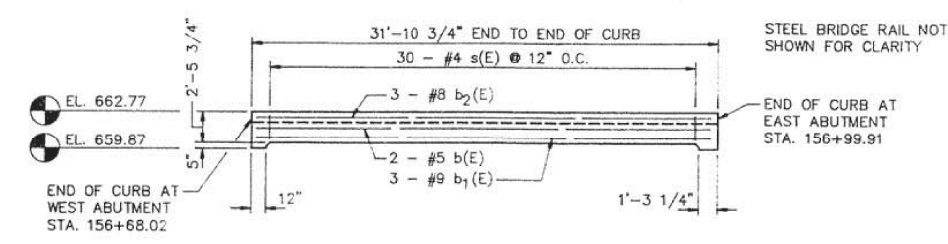
STATE OF ILLINOIS
DEPARTMENT OF TRANSPORTATION

TYPICAL SECTIONS

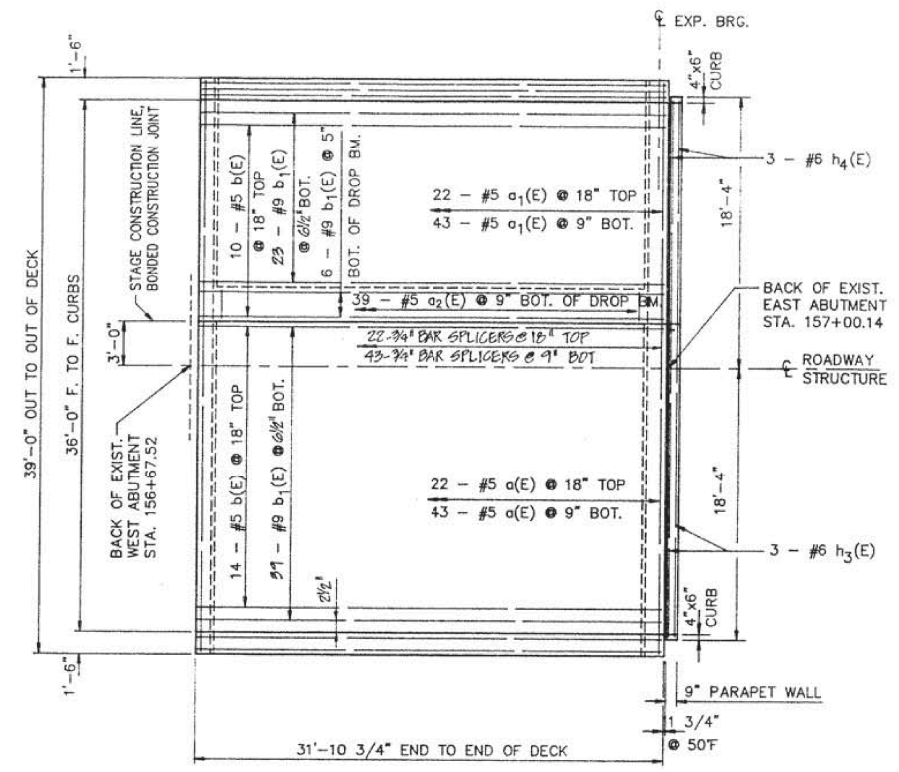
SCALE: SHEET 3 OF 5 SHEETS STA. TO STA.

F.A. RTE.	SECTION	COUNTY	TOTAL SHEETS	SHEET NO.
VAR.	FY19 BRIDGE DECK SEALING	VARIOUS	24	15
			CONTRACT NO. 70D29	
		ILLINOIS	FED. AID PROJECT	

F.A.P. RTE.	SECTION	COUNTY	TOTAL SHEETS	SHEET NO.
79	143 BR-3	DOUGLAS	19	13
F.H.W.A. REG.	ILLINOIS	PROJECT		



ELEVATION OF CURB BEAM
(DIMENSIONS @ OUTSIDE EDGE)



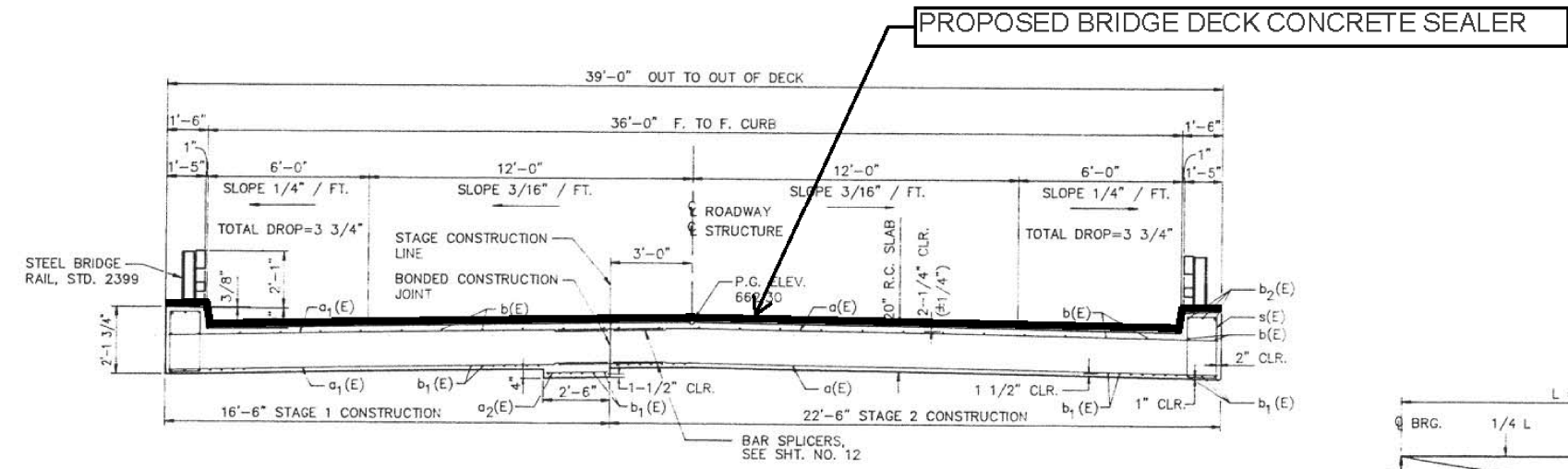
PLAN

BILL OF MATERIALS SUPERSTRUCTURE

BAR	SIZE	NO. REQ'D	LENGTH	SHAPE
a(E)	#5	67	22'-2"	
a1(E)	#5	67	16'-2"	
a2(E)	#5	39	2'-2"	
a3(E)	#6	6	22'-2"	
a4(E)	#6	6	16'-2"	
b(E)	#5	28	31'-7"	
b1(E)	#9	74	31'-7"	
b2(E)	#8	6	31'-7"	
h3(E)	#6	3	21'-0"	
h4(E)	#6	3	15'-0"	
s(E)	#4	60	6'-5"	
s1(E)	#4	42	6'-1"	
s2(E)	#4	42	5'-2"	

ITEM	UNIT	QUANTITY
PERFORMED JOINT SEAL 2-1/2"	LIN. FT.	39
CLASS "X" CONCRETE SUPERSTRUCTURE	CU. YD.	84.0
PROTECTIVE COAT	SQ. YD.	22
ELASTOMERIC BEARING ASSEMBLY TYPE I	EACH	7
FURNISHING AND ERECTING STRUCTURAL STEEL	POUND	1822
REINFORCEMENT BARS, EPOXY COATED	POUND	13,220

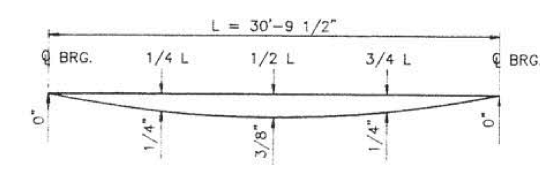
REINFORCEMENT BARS DESIGNATED (E) SHALL BE EPOXY COATED. SEE SHT. NO. 14 FOR BAR BENDING DETAILS.
SEE SHT. NO. 17 FOR ADDITIONAL PARAPET WALL DETAILS.



CROSS SECTION

LOOKING EAST

TYPICAL SECTION; TWO-LANE TWO-WAY WITH CURB



DEAD LOAD DEFLECTION DIAGRAM

SUPERSTRUCTURE

U.S. 36 over Dry Fork Creek
F.A.P. RTE. 79 Section 143 BR-3
Douglas County
Sta. 156+84
Structure Number 021-0017

Drawn **EWING**
Date **4/30/90**
REV. **B/90**

Project No.
18188002

UPCHURCH AND ASSOCIATES
engineers architects surveyors
MATTOON, IL. 235-3177

REV 10-15-90 BY PLC CHANGED REINFORCEMENT BARS, EPOXY COATED FROM 15,263 TO 13,220 POUNDS

MODEL: 4-00001.MXD FILE NAME: P:\PROJECTS\70D29\CADD\DATA\HYDRAULIC\70D29-025-01-01.dwg

USER NAME = brandenburgjt	DESIGNED - TJB	REVISED -
	DRAWN -	REVISED -
PLOT SCALE = 40.0000' / in.	CHECKED -	REVISED -
PLOT DATE = 11/27/2018	DATE - 10/9/2018	REVISED -

STATE OF ILLINOIS
DEPARTMENT OF TRANSPORTATION

TYPICAL SECTIONS

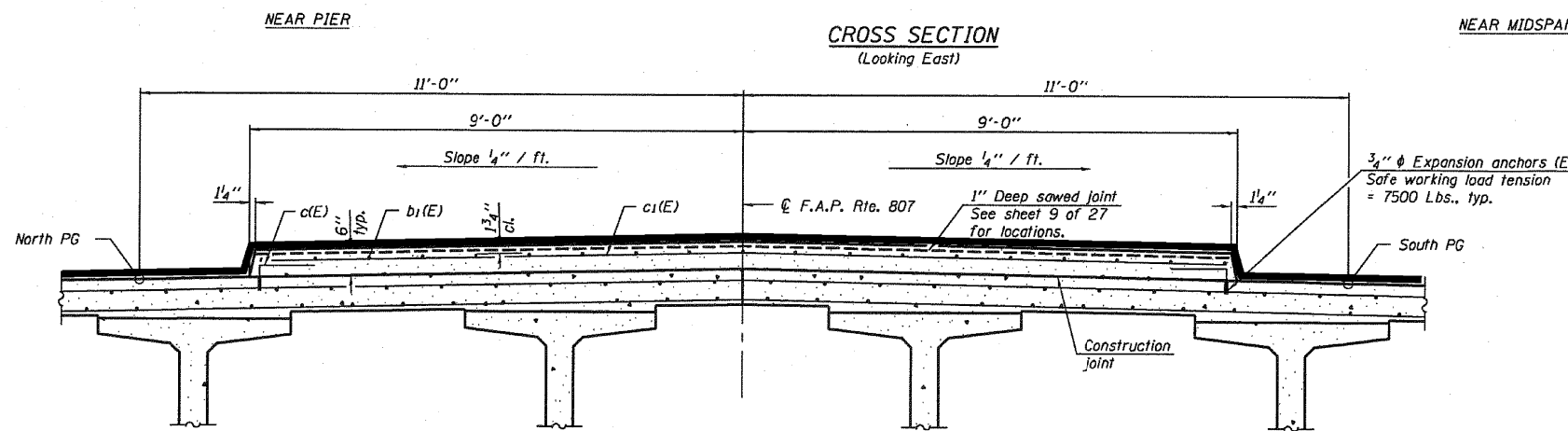
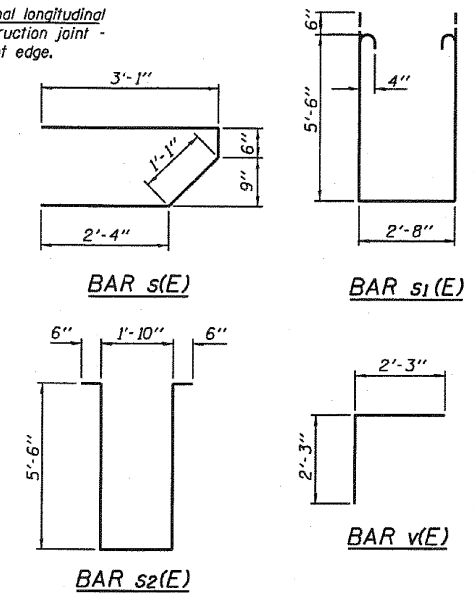
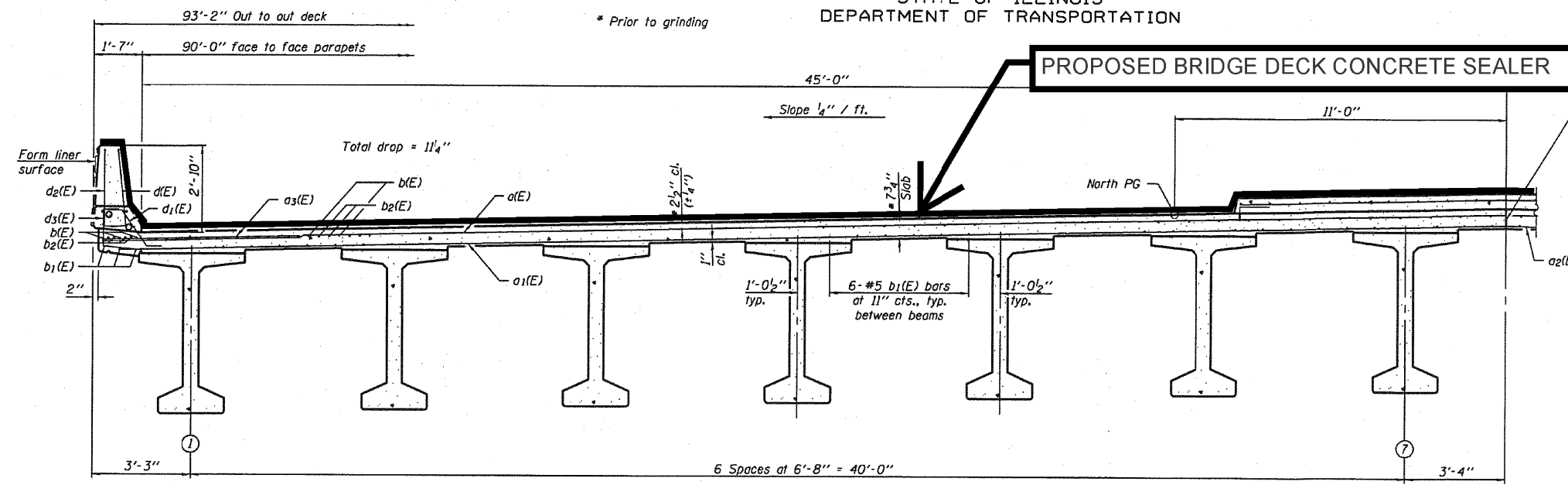
SCALE: SHEET 4 OF 5 SHEETS STA. TO STA.

F.A. RTE.	SECTION	COUNTY	TOTAL SHEETS	SHEET NO.
VAR.	FY19 BRIDGE DECK SEALING	VARIOUS	24	16
			CONTRACT NO. 70D29	
		ILLINOIS	FED. AID PROJECT	

STATE OF ILLINOIS
DEPARTMENT OF TRANSPORTATION

ROUTE NO.	SECTION	COUNTY	POST MILES	SHEET NO.	SHEET NO. 10
F.A.I. 57	10-32HB-3,K	CHAMPAIGN	352	119	27 SHEETS
FED. ROAD DIST. NO. 7	ILLINOIS	FED. AID PROJECT			

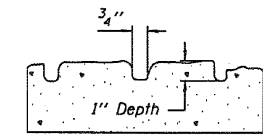
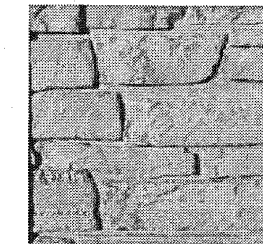
Contract #90758



TYPICAL SECTION WITH MEDIAN

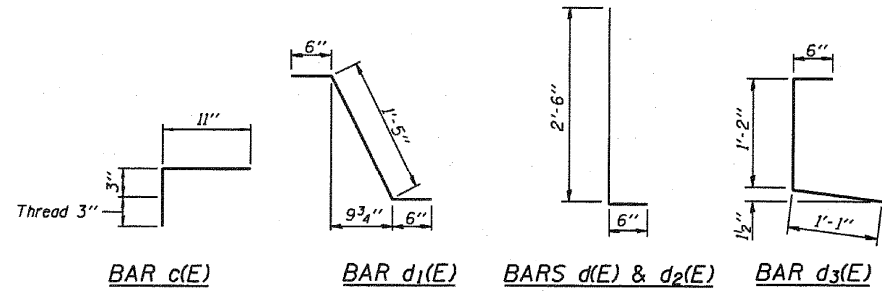
SECTION THRU MEDIAN
(Looking East)

Notes:
See sheet 11 of 27 for additional superstructure details and Bill of Material.
For diaphragm details, see sheets 12 and 13 of 27.
Reinforcement bars designated (E) shall be epoxy coated.
Bars indicated thus 20 x 3-#5 etc. indicates 20 lines of bars with 3 lengths per line.
See sheet 11 of 27 for parapet reinforcement.
Limestone Form Liner Textured Surface to be used on outside face of parapet. Utilize Teton Dry Stack (Scott system #189) or equivalent.
The depth of relief of the Form Liner Textured Surface is limited to 1". The relief should not compromise the reinforcement clearance in the parapet.
Cost of expansion anchors (E) included in the cost of Reinforcement Bars, Epoxy Coated.



FORM LINER TEXTURE DETAIL
See Special Provisions.

SUPERSTRUCTURE DETAILS
F.A.I. ROUTE 57 SEC. 10-32HB-3,K
CHAMPAIGN COUNTY
STATION 297+20.45
STRUCTURE NO. 010-0272



DESIGNED	Gholam R. Ahanchi
CHECKED	Rebecca L. Tharp
DRAWN	Michael B. Mossman
CHECKED	G.R.A. / R.L.T.

April 28, 2006
EXAMINED *Thomas J. Donagalli*
PASSED *Ralph E. Anderson*
ENGINEER OF BRIDGES AND STRUCTURES

STATE OF ILLINOIS
DEPARTMENT OF TRANSPORTATION

TYPICAL SECTIONS

USER NAME = brandenburgjt	DESIGNED - TJB	REVISED -	F.A. RTE.	SECTION	COUNTY	TOTAL SHEETS	SHEET NO.
PLOT SCALE = 40.0000' / in.	CHECKED -	REVISED -	VAR.	FY19 BRIDGE DECK SEALING	VARIOUS	24	17
PLOT DATE = 11/27/2018	DATE - 10/9/2018	REVISED -	CONTRACT NO. 70D29				
			SCALE:	SHEET 5	OF 5 SHEETS	STA.	TO STA.
			ILLINOIS		FED. AID PROJECT		

MODEL: S:\MODEL\NAME: FILE NAME: P:\CADD\BIDDING\TEC\Illinois\pwr\70D29\70D29\CADD\BIDDING\70D29-29-10-32HB-3,K-DECALL.dgn

SN	ROUTE CARRIED	FEATURE CROSSED	TRAFFIC CONTROL & PROTECTION							PROSECUTION & PROGRESS		RURAL	URBAN						
			701201	D5 DETAIL 70200000 ROAD CLOSURE	701411	701426 SPECIAL	701601	701427 SPECIAL	LOCATION	SUMMARY	CHANGEABLE MESSAGE SIGN (Calendar Days)			WORKING DAYS	PROSECUTION				
021-0001	I-57 (NB)	CNRL RR/ BIKE PATH			1	1			D1	6 - 701426 SPECIAL; 1 - 701411; 8 SN	4-CMS (2 EB; 2-WB); 7 CALENDAR DAYS PRIOR; 14 DAYS EACH DIRECTION; TOTAL 28 CALENDAR DAYS	2	1 DAY DRIVING LANES NB & SB; 1 DAY PASSING LANES NB & SB	X					
021-0002	I-57 (SB)	CNRL RR/ BIKE PATH				1		X											
021-0003	I-57 (NB)	DRAINAGE DITCH				1		X											
021-0004	I-57 (SB)	DRAINAGE DITCH				1		X											
021-0005	I-57 (SB)	DRAINAGE DITCH				INCL.		X											
021-0006	I-57 (NB)	DRAINAGE DITCH				1		X											
021-0007	I-57 (NB)	SCATTERING FORK				INCL.		X											
021-0008	I-57 (SB)	SCATTERING FORK				1		X											
021-0009	I-57 (NB)	FAP 323(US 36)			1	1		X											
021-0010	I-57 (SB)	FAP 323(US 36)			1	INCL.		X											
021-2008	I-57 (NB)	CSX & UP RR			1	INCL.		X											
021-2009	I-57 (SB)	CSX & UP RR				INCL.		X											
021-2010	I-57 (NB)	HAYES BRANCH				INCL.		X											
021-2011	I-57 (SB)	HAYES BRANCH				1		X											
021-0052	FAP 323(US 36)	BRUSHY FORK RIVER	2					D3	12 - 701201; 7 SN	NOT APPLICABLE	1.5	2 HRS PER STRUCTURE; 12 HRS	X						
021-2022	FAP 323 (US 36)	BRUSHY FORK TRIB	2										X						
021-0050	US 36(FAP 323)	DRAINAGE DITCH	2										X						
021-2018	US 36(FAP 323)	DRAINAGE DITCH	2										X						
021-0057	FAP 323(US 36)	EMBARRAS RIVER	2										X						
021-2026	FAP 323 (US 36)	HACKETT CREEK	2										X						
021-0020	FAP 323(US 36)	HAYES BRANCH DITCH	2										X						
021-2012	US 36(FAP 323)	STREAM	2										X						
021-0018	FAP 323(US 36)	KASKASKIA RIVER	2										X						
021-0017	FAP 323(US 36)	DRY FORK	2										X						
021-0051	US 36(FAP 323)	LAKE FORK RIVER	2										X						
021-0062	US 45(FAS 1671)	US 36(FAP 323)	1					D4	12 - 701201; 9 SN	NOT APPLICABLE	1.5	2 HRS PER STRUCTURE; 14 HRS	X						
021-0061	US RTE 45	U.P. RAILROAD	INCL.										X						
021-0060	US RTE 45	U.P. & CSX RR	INCL.										X						
021-0012	US 45(FAS 1671)	SCATTERING FORK	1										X						
021-0011	US 45(FAS 1671)	HAYES BRANCH	2										X						
021-0029	IL 130(FAP 808)	EMBARRAS RIVER	2										X						
021-0030	IL 130(FAP 820)	EMBARRAS RIVER	2										X						
021-0031	IL 130(FAP 820)	SCATTERING FORK	2										X						
021-0049	IL 130(FAP 820)	DEER CREEK	2										X						
021-0041	TR 157 D	I-57		1									D5	10 - 701201; 6 - ROAD CLOSURES; 9 SN	NOT APPLICABLE	2	2 HRS PER STRUCTURE; 20 HRS	X	
021-0037	TR 119	I-57		1														X	
021-0046	TR 108	I-57		1				X											
021-0045	TR 83	I-57		1				X											
021-0044	TR 49	I-57		1				X											
021-0043	TR 25	I-57		1				X											
021-0034	FAS 522(CH 6)	I-57	2					X											
021-2020	FAP 749(IL 133)	STREAM	2					D6	14 - 701201; 8 SN	NOT APPLICABLE	1	2 HRS PER STRUCTURE; 16 HRS						X	
021-0056	FAP 749(IL 133)	DRAINAGE DITCH	2															X	
021-0054	FAP 749(IL 133)	UNION DIST #6	INCL.															X	
021-0026	FAP 749(IL 133)	DRAINAGE DITCH	2															X	
021-0055	FAP 749(IL 133)	TRIB SCATTERING FORK	2										X						
021-0053	FAP 749(IL 133)	SCATTERING FORK	2										X						
021-0024	IL 133 (FAP 749)	I-57	2										X						
021-0059	FAP 749(IL 133)	KASKASKIA RIVER	2										X						

TC&P SET-UPS and CMS CALENDAR DAYS	48	6	4	8	0	0
WORKING DAYS PER STANDARD	6	2	4	4	0	0

28	10
----	----

MODEL: \\MODELNAME
 FILE NAME: \\FILENAME
 PROJECT: \\PROJECTNAME
 OFFICE: \\OFFICE
 DATE: \\DATE
 DRAWN BY: \\DRAWNBY
 CHECKED BY: \\CHECKEDBY
 DESIGNED BY: \\DESIGNEDBY
 REVISIONS: \\REVISIONS

USER NAME = brandenburgjt	DESIGNED - TJB	REVISED -
PLOT SCALE = 40.0000 ' / in.	CHECKED -	REVISED -
PLOT DATE = 11/27/2018	DATE - 10/9/2018	REVISED -

**STATE OF ILLINOIS
DEPARTMENT OF TRANSPORTATION**

**DOUGLAS COUNTY
SCHEDULE OF QUANTITIES**

SCALE: SHEET 2 OF 6 SHEETS STA. TO STA.

F.A. RTE.	SECTION	COUNTY	TOTAL SHEETS	SHEET NO.
VAR.	FY19 BRIDGE DECK SEALING	VARIOUS	24	19
CONTRACT NO. 70D29				
ILLINOIS		FED. AID PROJECT		

EDGAR COUNTY STRUCTURES SCHEDULE OF QUANTITIES

ACTUAL MEASUREMENTS

SN	ROUTE CARRIED	FEATURE CROSSED	SIMS INFORMATION		DECK			APPROACH SLABS					PARAPETS (HUB, FACE & TOP)			TYPE B CURB (FACE & TOP)			TOTAL (SQ FT)	RURAL	URBAN		
			LENGTH	WIDTH	LENGTH (E-E)	WIDTH (F-F)	AREA (SQ FT)	LENGTH (FT)	DIMENSIONS INSIDE PARAPET / CURB		DIMENSIONS BEYOND PARAPET / CURB	AREA (SQ FT)	HEIGHT	LENGTH (FT)		AREA (SQ FT)	HEIGHT	LENGTH				AREA (SQ FT)	
									LENGTH	WIDTH				3.6 FT TYPICAL	ALONG DECK								ALONG APPR.
023-0007	US 36(FAP 323)	BROUILLETTS CR	38.0	39.2	35.7	36.0	1284.1	20.0	0.0	36.0	20.0	39.2	1253.3	4.15	35.7	0.0	296.1	0.75	0.0	0.0	2834.0	X	
023-0010	US 36(FAP 323)	CRABAPPLE CREEK	63.0	39.2	60.7	36.0	2184.1	30.0	0.0	36.0	30.0	39.2	2352.0	4.15	60.7	0.0	503.6	0.75	5.0	15.0	5055.0	X	
023-0015	IL 133 (FAP 749)	HICKORY GROVE CREEK	147.0	32.0	144.7	32.0	4629.4	0.0	0.0	32.0	0.0	32.0	0.0	0.00	144.7	0.0	0.0	0.00	0.0	0.0	4630.0	X	
023-0024	IL 1 US 150(FAP 332)	PARIS LAKE	128.5	66.0	126.2	62.8	7923.5	20.0	0.0	62.8	20.0	66.0	2640.0	4.15	126.2	0.0	1047.2	0.75	15.0	45.0	14310.6		X
023-0026	IL 49(FAP 836)	EAST DONICA CREEK	70.0	35.2	67.7	32.0	2165.4	20.0	10.0	32.0	10.0	35.2	1344.0	4.15	67.7	10.0	727.7	0.75	0.0	0.0	4238.0	X	
023-0027	FAP 323(US 36)	STREAM	62.5	39.2	60.2	36.0	2166.1	20.0	10.0	36.0	10.0	39.2	1330.0	4.15	60.2	10.0	499.4	0.75	5.0	15.0	4011.0	X	
023-0028	FAP 323(US 36)	STREAM	62.5	39.2	60.2	36.0	2166.1	20.0	10.0	36.0	10.0	39.2	1330.0	4.15	60.2	10.0	499.4	0.75	5.0	15.0	4011.0	X	
023-0030	US 36(FAP 323)	LICK RUN	53.0	39.2	50.7	36.0	1824.1	20.0	0.0	36.0	20.0	39.2	1568.0	4.15	50.7	0.0	420.6	0.75	5.0	15.0	3828.0	X	
023-0031	FAP 323(US 36)	BRUSHY CREEK	57.5	39.2	55.2	36.0	1986.1	20.0	0.0	36.0	20.0	39.2	1330.0	4.15	55.2	0.0	457.9	0.75	0.0	0.0	3775.0	X	
023-0032	FAP 323(US 36)	STREAM	64.0	39.2	61.7	36.0	2220.1	20.0	0.0	36.0	20.0	39.2	1568.0	4.15	61.7	0.0	511.9	0.75	5.0	15.0	4315.0	X	
023-0033	US 36(FAP 323)	BROUILLETTS CREEK	98.0	35.2	96.5	32.0	3088.0	30.0	0.0	32.0	30.0	35.2	2112.0	4.15	96.5	0.0	801.0	0.75	30.0	90.0	6091.0	X	
023-0034	IL 133 (FAP 749)	DRAINAGE DITCH #7	70.0	35.2	69.0	32.0	2208.0	30.0	15.0	32.0	15.0	35.2	2016.0	3.60	69.0	15.0	712.8	0.75	15.0	45.0	4982.0	X	
023-2010	IL 49(FAP 836)	TRIB OF BRUSHY FORK	34.0	34.0	31.7	32.0	1013.4	30.0	0.0	32.0	30.0	34.0	2040.0	1.55	31.7	0.0	98.2	0.75	0.0	0.0	3152.0	X	
023-2014	IL 49(FAP 836)	STREAM	43.8	34.7	41.5	32.0	1327.0	30.0	0.0	32.0	30.0	34.7	2082.0	2.25	41.5	0.0	186.6	0.75	30.0	90.0	3686.0	X	

NO AS-BUILT CORRECTIONS FROM CONTRACT 70918 IN 2014

TOTALS (SQ FT)

68,919 54,608 14,311

EDGAR COUNTY STRUCTURES SCHEDULE OF QUANTITIES

TRAFFIC CONTROL & PROTECTION

PROSECUTION & PROGRESS

SN	ROUTE CARRIED	FEATURE CROSSED	701201	D5 DETAIL 70200000 ROAD CLOSURE	701411	701426 SPECIAL	701601	701427 SPECIAL	LOCATION	SUMMARY	CHANGEABLE MESSAGE SIGN (Calendar Days)	WORKING DAYS	PROSECUTION	RURAL	URBAN
023-0010	US 36(FAP 323)	CRABAPPLE CREEK	2						E2	12 - 701201; 8 SN	NOT APPLICABLE	1	2 HRS PER STRUCTURE; 10 HRS	X	
023-0027	FAP 323(US 36)	STREAM	2					X							
023-0028	FAP 323(US 36)	STREAM	2					X							
023-0030	US 36(FAP 323)	LICK RUN	2					X							
023-0031	FAP 323(US 36)	BRUSHY CREEK	2					X							
023-0032	FAP 323(US 36)	STREAM	2					X							
023-0007	US 36(FAP 323)	BROUILLETTS CR	2					X							
023-0033	US 36(FAP 323)	BROUILLETTS CREEK	2					X							
023-0015	IL 133 (FAP 749)	HICKORY GROVE CREEK	2					X							
023-0024	IL 1 US 150(FAP 332)	PARIS LAKE	2												
023-0026	IL 49(FAP 836)	EAST DONICA CREEK	2						E1	10 - 701201; 6 SN	1	2 HRS PER STRUCTURE; 10 HRS	X		
023-0034	IL 133 (FAP 749)	DRAINAGE DITCH #7	2					X							
023-2010	IL 49(FAP 836)	TRIB OF BRUSHY FORK	2					X							
023-2014	IL 49(FAP 836)	STREAM	2					X							

TC&P SET-UPS and CMS CALENDAR DAYS	22	0	0	0	0	0
WORKING DAYS PER STANDARD	2	0	0	0	0	0

0	2
---	---

MODEL: \\MODELS\NAME: FILE NAME: P:\PROJECTS\7029\CADD\DATA\HYDRA\FILE\CD702929-ENC-STRUCTURE.dgn

USER NAME = brandenbjtj	DESIGNED - TJB	REVISED -
	DRAWN -	REVISED -
PLOT SCALE = 40.0000 ' / in.	CHECKED -	REVISED -
PLOT DATE = 11/27/2018	DATE - 10/9/2018	REVISED -

STATE OF ILLINOIS
DEPARTMENT OF TRANSPORTATION

EDGAR COUNTY
SCHEDULE OF QUANTITIES

SCALE: SHEET 3 OF 6 SHEETS STA. TO STA.

F.A. RTE.	SECTION	COUNTY	TOTAL SHEETS	SHEET NO.
VAR.	FY19 BRIDGE DECK SEALING	VARIOUS	24	20
CONTRACT NO. 70D29				
ILLINOIS FED. AID PROJECT				

VERMILION COUNTY STRUCTURES SCHEDULE OF QUANTITIES

ACTUAL MEASUREMENTS

SN	ROUTE CARRIED	FEATURE CROSSED	SIMS INFORMATION		DECK			APPROACH SLABS					PARAPETS (HUB, FACE & TOP)			TYPE B CURB (FACE & TOP)			TOTAL (SQ FT)	RURAL	URBAN		
			LENGTH	WIDTH	LENGTH (E-E)	WIDTH (F-F)	AREA (SQ FT)	LENGTH (FT)	DIMENSIONS INSIDE PARAPET / CURB		DIMENSIONS BEYOND PARAPET / CURB		AREA (SQ FT)	HEIGHT	LENGTH (FT)		AREA (SQ FT)	HEIGHT				LENGTH	AREA (SQ FT)
									LENGTH	WIDTH	LENGTH	WIDTH			3.6 FT TYPICAL	ALONG DECK							
092-0003	I-74 (EB)	MIDDLEFORK VERM RIV	364.5	36.7	362.2	33.5	12132.7	30.0	12.0	33.5	18.0	33.5	2010.0	3.60	362.2	12.0	2780.4	0.75	18.0	54.0	16978.0	X	
092-0004	I-74 (WB)	MIDDLEFORK VERM RIV	364.5	36.7	362.2	33.5	12132.7	30.0	12.0	33.5	18.0	33.5	2010.0	3.60	362.2	12.0	2780.4	0.75	18.0	54.0	16978.0	X	
092-0008	I-74 (EB)	N&S & FAU 7026(L ST)	277.4	43.2	275.1	40.0	11002.8	20.0	12.0	40.0	8.0	40.0	1600.0	3.60	275.1	12.0	2153.3	0.75	8.0	24.0	14781.0		X
092-0009	I-74 (WB)	N&S & FAU 7026(L ST)	317.5	51.2	315.2	48.0	15128.2	20.0	12.0	55.0	8.0	55.0	2200.0	3.60	315.2	12.0	2442.0	0.75	8.0	24.0	19795.0		X
092-0010	I-74 (EB)	"G" ST(FAU 7026)	117.6	44.0	115.3	40.8	4703.0	30.0	12.0	40.8	18.0	40.8	2448.0	3.60	115.3	12.0	1002.7	0.75	18.0	54.0	8208.0		X
092-0011	I-74 (WB)	"G" ST(FAU 7026)	117.6	44.0	115.3	40.8	4703.0	30.0	12.0	40.8	18.0	40.8	2448.0	3.60	115.3	12.0	1002.7	0.75	18.0	54.0	8208.0		X
092-0012	I-74 (WB)	CNRL & FR1563 & 1611	237.8	44.7	235.5	41.5	9772.0	22.2	12.0	41.5	10.2	41.5	1842.6	3.60	235.5	12.0	1868.2	0.00	10.2	0.0	13483.0		X
092-0013	I-74 (EB)	CNRL & FR1563 & 1611	237.8	55.0	235.5	53.5	12597.6	24.4	12.0	53.5	12.4	53.5	2610.8	3.60	235.5	12.0	1868.2	0.00	12.4	0.0	17077.0		X
092-0014	I-74 (WB)	VERMILION RIVER	583.8	43.2	581.5	40.0	23258.8	56.5	12.0	40.0	44.5	40.0	4520.0	3.60	581.5	12.0	4359.4	0.00	44.5	0.0	32139.0		X
092-0015	I-74 (EB)	VERMILION RIVER	583.8	47.2	581.5	44.0	25584.7	56.5	12.0	44.0	44.5	44.0	4972.0	3.60	581.5	12.0	4359.4	0.00	44.5	0.0	34917.0		X
092-0023	I-74(WB)&RAMP	CSX RR & MS 9010	271.0	63.8	268.7	60.6	16281.4	50.0	15.0	60.6	35.0	60.6	6060.0	3.60	268.7	15.0	2150.4	0.75	35.0	105.0	24597.0		X
092-0024	I-74(EB)	CSX RR & MS 9010	271.0	43.2	268.7	40.0	10746.8	50.0	15.0	40.0	35.0	40.0	4000.0	3.60	268.7	15.0	2150.4	0.75	35.0	105.0	17003.0		X
092-0025	I-74 (WB)	RAMP 22.31	157.6	43.7	155.3	40.5	6288.4	50.0	15.0	40.5	35.0	40.5	4050.0	3.60	155.3	15.0	1333.9	0.75	35.0	105.0	11778.0		X
092-0026	I-74 & RAMP	RAMPS 21.94/22.31	157.6	51.8	155.3	48.6	7546.1	50.0	15.0	48.6	35.0	48.6	4860.0	3.60	155.3	15.0	1333.9	0.75	35.0	105.0	13846.0		X

CORRECTED BASED ON ACTUAL FIELD MEASUREMENTS FROM CONTRACT 70919 IN 2015; NO AS-BUILT CORRECTIONS FROM CONTRACTS 70861 IN 2011 AND 70B94 IN 2017

TOTALS (SQ FT) 249,788 33,956 215,832

VERMILION COUNTY STRUCTURES SCHEDULE OF QUANTITIES

TRAFFIC CONTROL & PROTECTION

PROSECUTION & PROGRESS

SN	ROUTE CARRIED	FEATURE CROSSED	701426 SPECIAL	701411	LOCATION	SUMMARY	CHANGEABLE MESSAGE SIGN (Calendar Days)	WORKING DAYS	PROSECUTION	RURAL	URBAN	
092-0003	I-74 (EB)	MIDDLEFORK VERM RIV	1	1	V9	4 - 701426 SPECIAL; 6 - 701411; 8 SN	4-CMS (2 EB; 2-WB); 7 CALENDAR DAYS PRIOR; 14 DAYS EACH DIRECTION; TOTAL 28 CALENDAR DAYS	2	1 DAY DRIVING LANES WB & EB; 1 DAY PASSING LANES EB & WB	X		
092-0004	I-74 (WB)	MIDDLEFORK VERM RIV	1	1						X		
092-0008	I-74 (EB)	N&S & FAU 7026(L ST)	1								X	
092-0009	I-74 (WB)	N&S & FAU 7026(L ST)	1								X	
092-0010	I-74 (EB)	"G" ST(FAU 7026)	INCL.	1							X	
092-0011	I-74 (WB)	"G" ST(FAU 7026)	INCL.	1							X	
092-0012	I-74 (WB)	CNRL & FR1563 & 1611	INCL.	1							X	
092-0013	I-74 (EB)	CNRL & FR1563 & 1611	INCL.	1							X	
092-0014	I-74 (WB)	VERMILION RIVER	1	1	V10	4 - 701426 SPECIAL; 4 - 701411; 6 SN	2	1 DAY DRIVING LANES WB & EB; 1 DAY PASSING LANES EB & WB		X		
092-0015	I-74 (EB)	VERMILION RIVER	1							X		
092-0023	I-74(WB)&RAMP	CSX RR & MS 9010	1	1						X		
092-0024	I-74(EB)	CSX RR & MS 9010	1							X		
092-0025	I-74 (WB)	RAMP 22.31	INCL.	1						X		
092-0026	I-74 & RAMP	RAMPS 21.94/22.31	INCL.	1						X		

TC&P SET-UPS and CMS CALENDAR DAYS	0	8	10	0
WORKING DAYS PER STANDARD	0	4	4	0

28	4
----	---

MODEL: \\MODELNAME; FILE NAME: \\FILENAME; PROJECT: \\PROJECT; CADD: \\CADD; DATA: \\DATA; HYDRA: \\HYDRA; IFC: \\IFC; DTD: \\DTD; SCHEDULE: \\SCHEDULE

USER NAME = brandenburgjt	DESIGNED - TJB	REVISED -
	DRAWN -	REVISED -
PLOT SCALE = 40.0000 ' / in.	CHECKED -	REVISED -
PLOT DATE = 11/27/2018	DATE - 10/9/2018	REVISED -

STATE OF ILLINOIS
DEPARTMENT OF TRANSPORTATION

VERMILION COUNTY
SCHEDULE OF QUANTITIES

SCALE: SHEET 4 OF 6 SHEETS STA. TO STA.

F.A. RTE.	SECTION	COUNTY	TOTAL SHEETS	SHEET NO.
VAR.	FY19 BRIDGE DECK SEALING	VARIOUS	24	21
CONTRACT NO. 70D29				
ILLINOIS FED. AID PROJECT				

SN	ROUTE CARRIED	FEATURE CROSSED	TRAFFIC CONTROL & PROTECTION							PROSECUTION & PROGRESS				
			701201	D5 DETAIL 70200000 ROAD CLOSURE	701411	701426 SPECIAL	701601	701427 SPECIAL	LOCATION	SUMMARY	CHANGEABLE MESSAGE SIGN (Calendar Days)	WORKING DAYS	PROSECUTION	RURAL
092-0174	IL 49 (FAP 840)	FAST CREEK	2										X	
092-2036	FAS 331 (CH 10)	STREAM	2										X	
092-0045	IL 9 (FAP 697)	W BR FOUNTAIN CREEK	2										X	
092-0046	IL 9 (FAP 697)	CREEK	2										X	
092-2022	IL 9 (FAP 697)	CREEK	2										X	
092-0192	IL 9 (FAP 697)	DRAINAGE DITCH	2											X
092-0191	IL 1 (FAP 332)	CREEK	2											X
092-0096	FAS 131343 (CH 41)	N FORK VERMILION RIV	2										X	
092-0201	US 136 (FAP 711)	BEAN CREEK	2										X	
092-0200	US 136 (FAP 711)	BLUE GRASS CREEK	2										X	
092-0101	IL 49 (FAP 840)	UPRR	2										X	
092-0058	US 136 (FAP 709)	MIDDLE FORK RIVER	2										X	
092-0060	IL 49 (FAP 840)	DRAINAGE DITCH	2										X	
092-0196	IL 49 (FAP 840)	MIDDLE FORK RIVER	2										X	
092-0189	IL 1 (FAP 332)	STREAM	2										X	
092-0207	IL 119 (FAP 711)	N FORK VERMILION RIV	2										X	
092-0172	CH 15 (BISMARCK RD)	N FORK VERMILION RIV	2										X	
092-0173	CH 15 (BISMARCK RD)	E BRANCH VERMILION RIV	2										X	
092-0193	FAS 497 (CH 15)	PAINTER CREEK	2										X	
092-0195	FAS 500 (CH 3)	PAINTER CREEK	2										X	
092-0205	IL 1/US 136 (FAP 332)	N FORK VERMILION RIV	2											X
092-0171	IL 49 (FAP 840)	TRIB STONY CREEK	2										X	
092-0182	IL 49(FAP 840)	STONY CREEK TRIB	2										X	
092-0203	IL 49 (FAP 840)	I-74	2										X	
092-0146	TR 8 A	I-74		1									X	
092-0115	CH 11	I-74	2										X	
092-0148	TR 102	I-74		1									X	
092-0187	SBI 10 (US 150)	STONY CREEK	2										X	
092-0177	FAS 331(CH 10)	SALT FORK	2										X	
092-0125	TR 206	I-74	2										X	
092-0127	TR 251 B	I-74		1									X	
092-0126	TR 250	I-74	2											X
092-0128	TR 300	I-74	2											X
092-0202	IL 1/US 150 (FAP 332)	N&S RR												X
092-0038	IL 1/US 150 (FAP 332)	I-74 & CD16.23/16.33			4	4			4 - 701426 SPECIAL; 6 - 701411; 3 SN					X
092-0039	IL 1/US 150 (FAP 332)	14TH ST(FAU 7010)			2	INCL.								X
092-0129	FAU 7019(TR 354)	I-74	2						2 - 701201; 1 SN					X
092-0198	FAU 7045 (BOWMAN AVE)	I-74 & RAMP 18.32					2		2 - 701601; 1 SN					X
092-0151	CH 28 (BREWER RD)	I-74	2						2 - 701201; 1 SN					X
092-0144	US 136 (FAP 729)	LICK CREEK	2						2 - 701201; 1 SN					X
092-6000	US 136 MAIN ST	STONY CREEK						4	4 - 701427; 1 SN					X
092-0036	IL 1/US 150 (FAP 332)	VERMILION RIVER						4	4 - 701427; 1 SN					X
092-0053	US 150(FAP 729)	N FORK VERMILION RIV				4			4 - 701426; 1 SN					X
092-0057	"A" AVE (MS 6480)	US 150(FAP 729)	2						2 - 701201; 1 SN					X
092-0095	FAS 513(CH 18)	LITTLE VERMILION RIV	2										X	
092-0170	FAS 509(CH 23)	FAYETTE CREEK	2										X	
092-0169	FAS 509 (CH 23)	FAIRVIEW CREEK	2										X	
092-0206	IL 1/US 150 (FAP 332)	LITTLE VERMILION RIV	2											X

TC&P SET-UPS and CMS CALENDAR DAYS	74	3	6	8	2	8
WORKING DAYS PER STANDARD	9	2	2	2	2	2

0	12
---	----

MODEL: \\MODELNAME
 FILE NAME: \\FILENAME
 PROJECT: \\PROJECT
 DRAWING: \\DRAWING
 SHEET: \\SHEET

USER NAME = brandenburgj	DESIGNED - TJB	REVISED -
PLOT SCALE = 40.0000 ' / in.	CHECKED -	REVISED -
PLOT DATE = 11/27/2018	DATE - 10/9/2018	REVISED -

**STATE OF ILLINOIS
DEPARTMENT OF TRANSPORTATION**

**VERMILION COUNTY
SCHEDULE OF QUANTITIES**

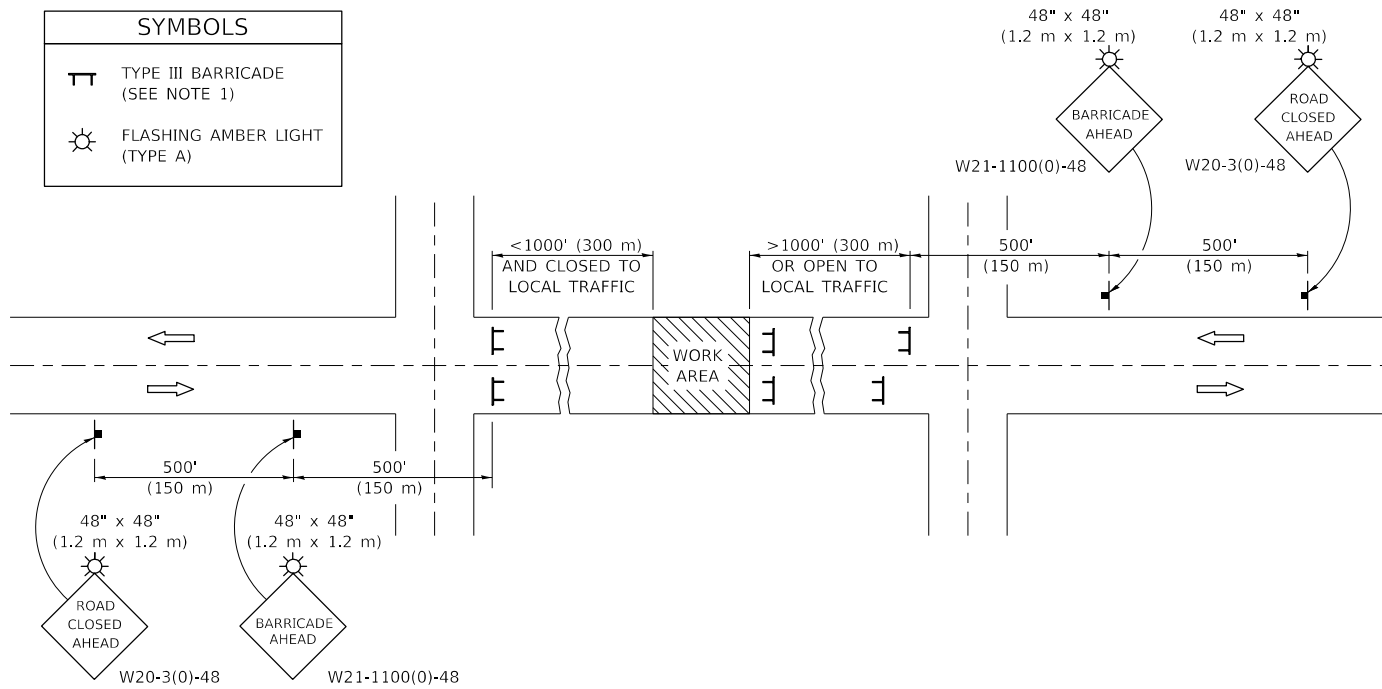
SCALE: SHEET 6 OF 6 SHEETS STA. TO STA.

F.A. RTE.	SECTION	COUNTY	TOTAL SHEETS	SHEET NO.
VAR.	FY19 BRIDGE DECK SEALING	VARIOUS	24	23
CONTRACT NO. 70D29				
ILLINOIS FED. AID PROJECT				

ROAD CLOSURE

SIDEROAD / STREET CLOSURE

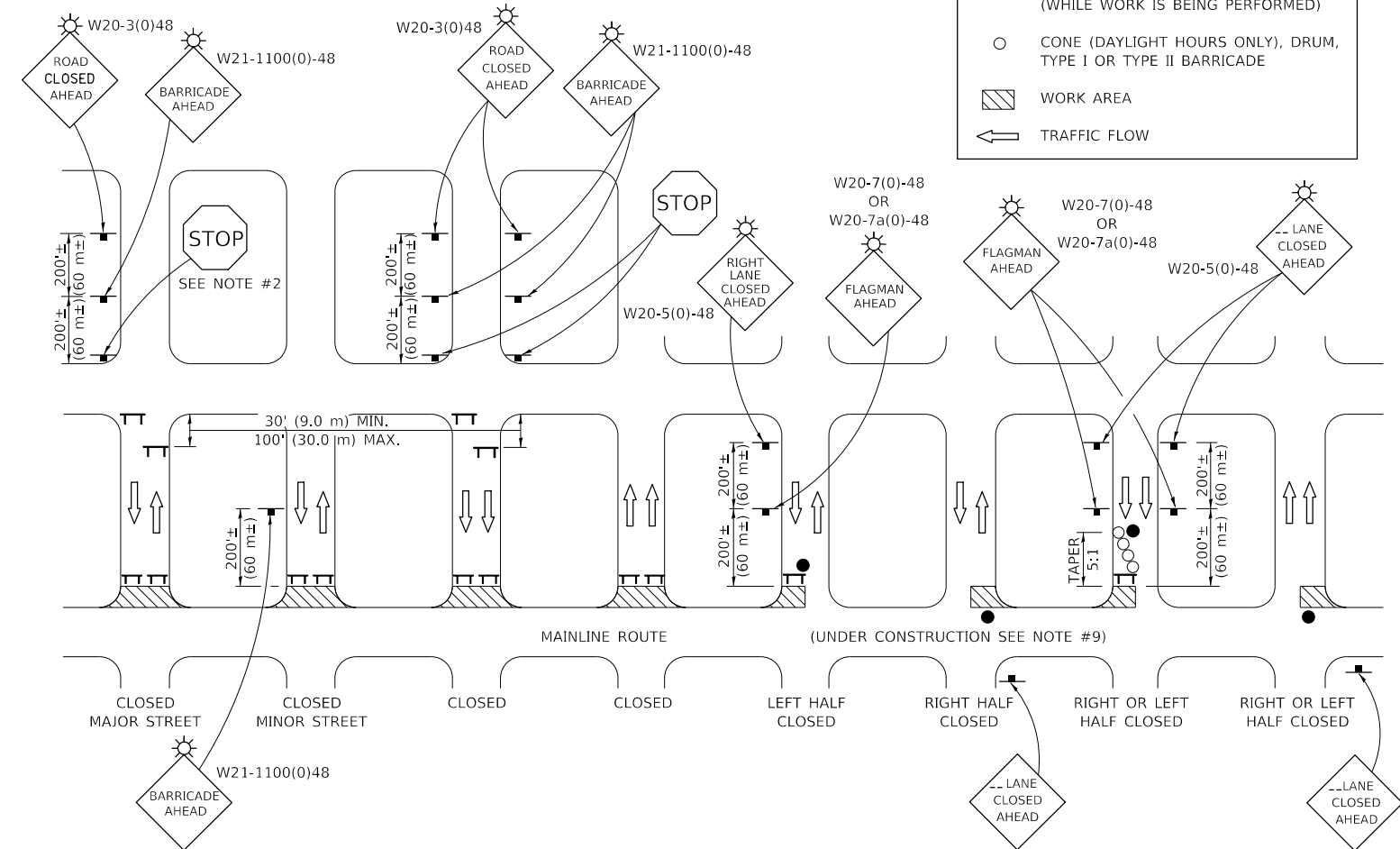
SYMBOLS	
	TYPE III BARRICADE (SEE NOTE 1)
	FLASHING AMBER LIGHT (TYPE A)



GENERAL NOTES

- TYPE III BARRICADES SHALL BE AS SHOWN ON STANDARD 701901 "TYPICAL APPLICATIONS OF TYPE III BARRICADES CLOSING A ROAD". EACH TYPE III BARRICADE SHALL HAVE TWO FLASHING AMBER LIGHTS MOUNTED ABOVE IT.
- IF THE ROAD IS OPEN TO LOCAL TRAFFIC OR EXCEEDS 1000' (300 m), ANOTHER SET OF TYPE III BARRICADES, EQUIPPED AS IN NOTE 1 ABOVE, SHALL BE PLACED AT EACH END OF THE WORK AREA.
- WHEN A STOP CONDITION EXISTS, NO SIGNS ARE REQUIRED IN ADVANCE OF THE "STOP" SIGN WHEN THE ROAD IS CLOSED WITHIN 100' (30 m) OF THE INTERSECTION.
- STANDARD 701901 SHALL APPLY FOR THE PLACEMENT & DESIGN OF TYPE III BARRICADES.
- IF A TYPE III BARRICADE WITH AN ATTACHED SIGN PANEL WHICH MEETS NCHRP 350 IS NOT AVAILABLE, THE SIGNS MAY BE MOUNTED ON AN NCHRP 350 TEMPORARY SIGN SUPPORT DIRECTLY IN FRONT OF THE BARRICADE.
- REFLECTORIZED STRIPING SHALL APPEAR ON BOTH SIDES OF THE TYPE III BARRICADES IF ROAD IS OPEN TO LOCAL TRAFFIC.
- ALL SIGNS SHALL BE POST MOUNTED IF THE CLOSURE TIME EXCEEDS FOUR DAYS.
- A MINIMUM OF TWO FLASHING LIGHTS SHALL BE USED AT NIGHT ON EACH APPROACH IN ADVANCE OF THE WORK AREA. FLASHING LIGHTS SHALL BE INSTALLED ABOVE THE FIRST TWO SIGNS IN THE SERIES.
- LONGITUDINAL DIMENSIONS MAY BE ADJUSTED SLIGHTLY TO FIT FIELD CONDITIONS.
- FORMS BT. 725 AND BT. 726 ARE REQUIRED.
- WHEN A SIDEROAD INTERSECTS THE HIGHWAY ON WHICH WORK IS BEING PERFORMED, ADDITIONAL TRAFFIC DEVICES SHALL BE ERECTED AND PROVIDED AS DIRECTED BY THE ENGINEER.
- AN ADDITIONAL SIGN MAY BE REQUIRED AT A MAJOR INTERSECTING ROAD IN ADVANCE OF THE CLOSURE. THE ADDITIONAL SIGN SHALL GIVE THE DISTANCE TO THE BARRICADE IN MILES OR FRACTIONS OF A MILE.

SYMBOLS	
	TYPE III BARRICADE (SEE NOTE)
	FLASHING LIGHT
	FLAGGER WITH TRAFFIC CONTROL SIGN (WHILE WORK IS BEING PERFORMED)
	CONE (DAYLIGHT HOURS ONLY), DRUM, TYPE I OR TYPE II BARRICADE
	WORK AREA
	TRAFFIC FLOW



GENERAL NOTES

- TYPE III BARRICADES SHALL BE AS SHOWN ON "TYPICAL APPLICATIONS OF TYPE III BARRICADES CLOSING A ROAD". EACH TYPE III BARRICADE SHALL HAVE TWO FLASHING AMBER LIGHTS MOUNTED ABOVE IT.
- WHERE A STOP CONDITION EXISTS, AS SHOWN ABOVE, WARNING SIGNS MAY BE OMITTED IN ADVANCE OF THE "STOP" SIGN.
- STANDARD 701901 SHALL APPLY FOR THE PLACEMENT & MANUFACTURE OF TYPE III BARRICADES.
- ALL SIGNS SHALL BE POST MOUNTED IF THE CLOSURE TIME EXCEEDS FOUR DAYS.
- ONE FLASHING LIGHT IS REQUIRED ABOVE EACH ADVANCE WARNING SIGN DURING HOURS OF DARKNESS.
- LONGITUDINAL DIMENSIONS MAY BE ADJUSTED SLIGHTLY TO FIT FIELD CONDITIONS.
- FORMS BT 725 AND BT 726 ARE REQUIRED.
- THE MAINLINE ROUTE TEMPORARY TRAFFIC CONTROL SHALL BE IN ACCORDANCE WITH THE PLANS, SPECIAL PROVISIONS AND STANDARD SPECIFICATIONS.
- ALL FLAGGERS REQUIRED AT SIDE ROADS AND ENTRANCES REMAINING OPEN TO TRAFFIC AND/OR ADDITIONAL BARRICADES REQUIRED BY THE ENGINEER TO CLOSE SIDE ROADS AND ENTRANCES WILL BE PAID FOR ACCORDING TO ARTICLE 109.04.

Note: All dimensions are in INCHES (millimeters) unless otherwise shown.

MODEL: \\MODELS\NAME: FILE NAME: PROJECT: \\PROJECTS\702029\CADD\DATA\Hydraulic\702029-01-01.dwg

USER NAME = brandenburgtj	DESIGNED -	REVISED - 11/06
	DRAWN -	REVISED - 12/07
PLOT SCALE = 40.0000' / in.	CHECKED -	REVISED - 09/09 KJT
PLOT DATE = 11/27/2018	DATE -	REVISED -

STATE OF ILLINOIS
DEPARTMENT OF TRANSPORTATION

TRAFFIC CONTROL & PROTECTION DEVICES
(ROAD & SIDEROAD / STREET CLOSURES)

SCALE: SHEET 1 OF 1 SHEETS STA. TO STA.

DISTRICT 5 DETAIL NO. 7020000

F.A. RTE.	SECTION	COUNTY	TOTAL SHEETS	SHEET NO.
VAR.	FY19 BRIDGE DECK SEALING	VARIOUS	24	24
				CONTRACT NO. 70D29
		ILLINOIS	FED. AID PROJECT	