

113

03-08-2019 LETTING ITEM 113

STATE OF ILLINOIS
DEPARTMENT OF TRANSPORTATION

F.A.I. NO.	SECTION	COUNTY	TOTAL SHEETS	SHEET NO.
72	(69-6,7,8,9) PP	MORGAN	6	1
		ILLINOIS	CONTRACT NO. 72L02	

D-96-023-19

FOR INDEX OF SHEETS, SEE SHEET NO. 2

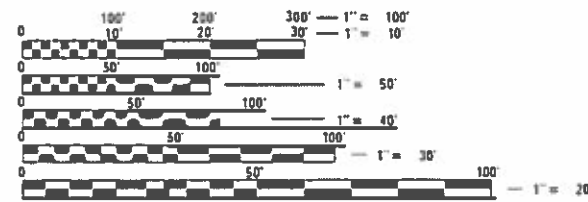
PROPOSED IMPROVEMENTS

FAI 72 (I 72)
SECTION (69-6, 7, 8, 9) PP
PATCHING

MORGAN CO.
C-96-032-19

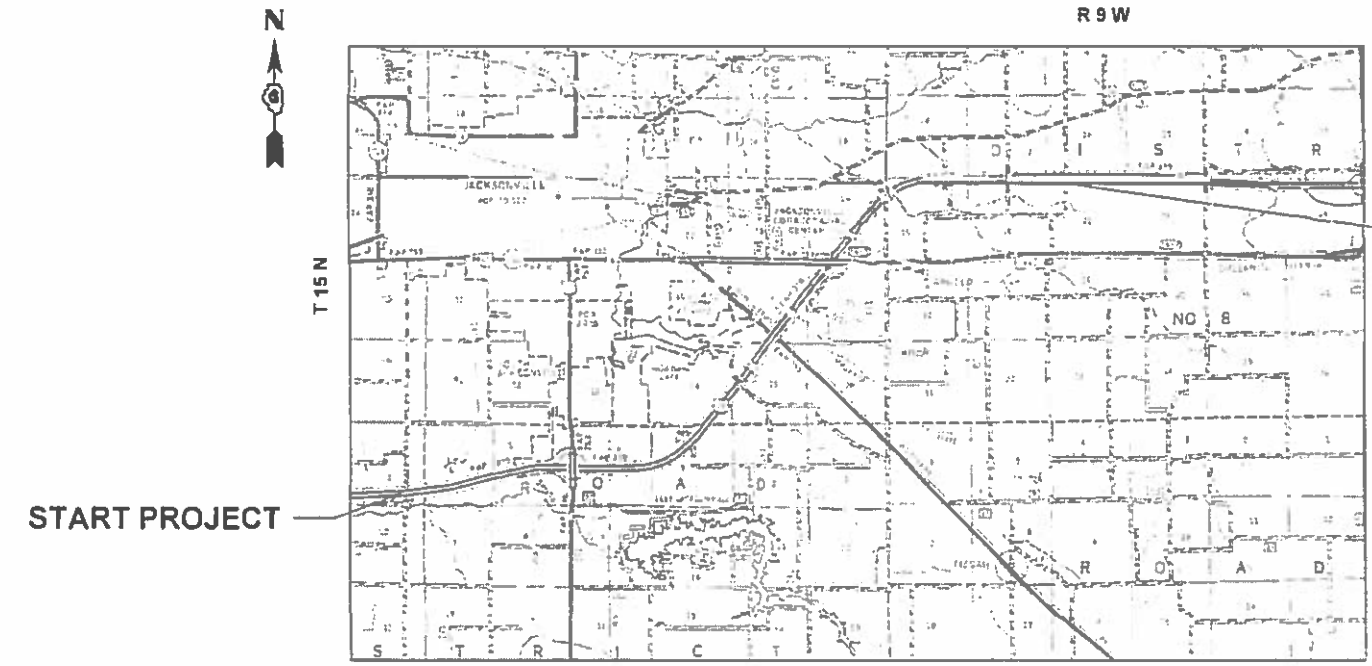


ADT = 5,600
SU = 550
MU = 1,500



FULL SIZE PLANS HAVE BEEN PREPARED USING STANDARD ENGINEERING SCALES. REDUCED SIZED PLANS WILL NOT CONFORM TO STANDARD SCALES. IN MAKING MEASUREMENTS ON REDUCED PLANS, THE ABOVE SCALES MAY BE USED.

J.U.L.I.E.
JOINT UTILITY LOCATION INFORMATION FOR EXCAVATION
1-800-892-0123
OR 811



STATE OF ILLINOIS
DEPARTMENT OF TRANSPORTATION

SUBMITTED December 21, 2018
Jeffrey M. Smith REGIONAL ENGINEER
Feb 10, 2019
Paul P. Chif ENGINEER OF DESIGN AND ENVIRONMENT
DIRECTOR OF HIGHWAYS PROJECT IMPLEMENTATION

PROJECT ENGINEER : MIKE IRWIN - (217)524-7765
PROJECT MANAGER : TIM SHARP - (217)524-9160

CONTRACT NO. 72L02

PRINTED BY THE AUTHORITY
OF THE STATE OF ILLINOIS

INDEX OF SHEETS

SHEET NO.	DESCRIPTION
1.	COVER SHEET
2.	INDEX OF SHEETS, STANDARDS, GENERAL NOTES & SIGNATURES
3.	SUMMARY OF QUANTITIES
4.	SCHEDULES
5.	LOCATION MAP
6.	PROJECT TYPICAL SECTIONS

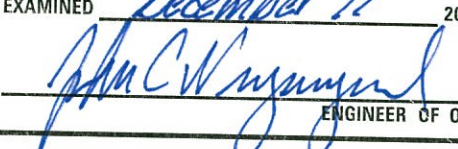
STANDARDS


STANDARD NO.	DESCRIPTION
442001-04	CLASS A PATCHES
442201-03	CLASS C & D PATCHES
701400-09	APPROACH TO LANE CLOSURE, FREEWAY/EXPRESSWAY
701401-12	LANE CLOSURE, FREEWAY/EXPRESSWAY
701411-09	LANE CLOSURE, MULTILANE, AT ENTRANCE OR EXIT RAMP, FOR SPEEDS >45MPH
701901-08	TRAFFIC CONTROL DEVICES
780001-05	TYPICAL PAVEMENT MARKINGS

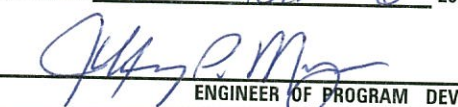
NOTES:

D-6 OPERATIONS WILL PLACE PERMANENT PAVEMENT MARKINGS

**STATE OF ILLINOIS
DEPARTMENT OF TRANSPORTATION
DIVISION OF HIGHWAYS
DISTRICT 6**

EXAMINED December 17 20 18

 ENGINEER OF OPERATIONS

EXAMINED December 5th 20 18

 ENGINEER OF PROJECT IMPLEMENTATION

EXAMINED December 6 20 18

 ENGINEER OF PROGRAM DEVELOPMENT

				0-01625-6023
				100% STATE
				MORGAN
				ROADWAY
				0006
CODE NO.	ITEM	UNIT	TOTAL QUANTITY	URBAN
44200577	CLASS A PATCHES, TYPE II, 12 INCH	SQ YD	320	320
44200581	CLASS A PATCHES, TYPE III, 12 INCH	SQ YD	187	187
44200583	CLASS A PATCHES, TYPE IV, 12 INCH	SQ YD	52	52
44200140	PA VEMENT PATCHING, TYPE I, 12 INCH	SQ YD	2	2
44213200	SA W CUTS	FT	2231	2231
44213204	TIE BARS 3/4"	EA	45	45
44213000	PATCHING REINFORCEMENT	SY	560	560
67100100	MOBILIZATION	L SUM	1	1
70100800	TRAFFIC CONTROL AND PROTECTION, STANDARD 701401	L SUM	1	1
70100420	TRAFFIC CONTROL AND PROTECTION, STANDARD 701411	EA	5	5
70107025	CHANGEABLE MESSAGE SIGN	CAL DA	28	28

FILE NAME =	USER NAME = nicholson1	DESIGNED - _____	REVISED - _____
S:\CONTRMAINT_CAD\72L02 - MORGAN CD	PATCHING\Plans\72L02-shr-3-500.dgn	DRAWN - DMS	REVISED - _____
Default	PLOT SCALE = 40.0000' / in.	CHECKED - _____	REVISED - _____
	PLOT DATE = 12/13/2018	DATE - _____	REVISED - _____

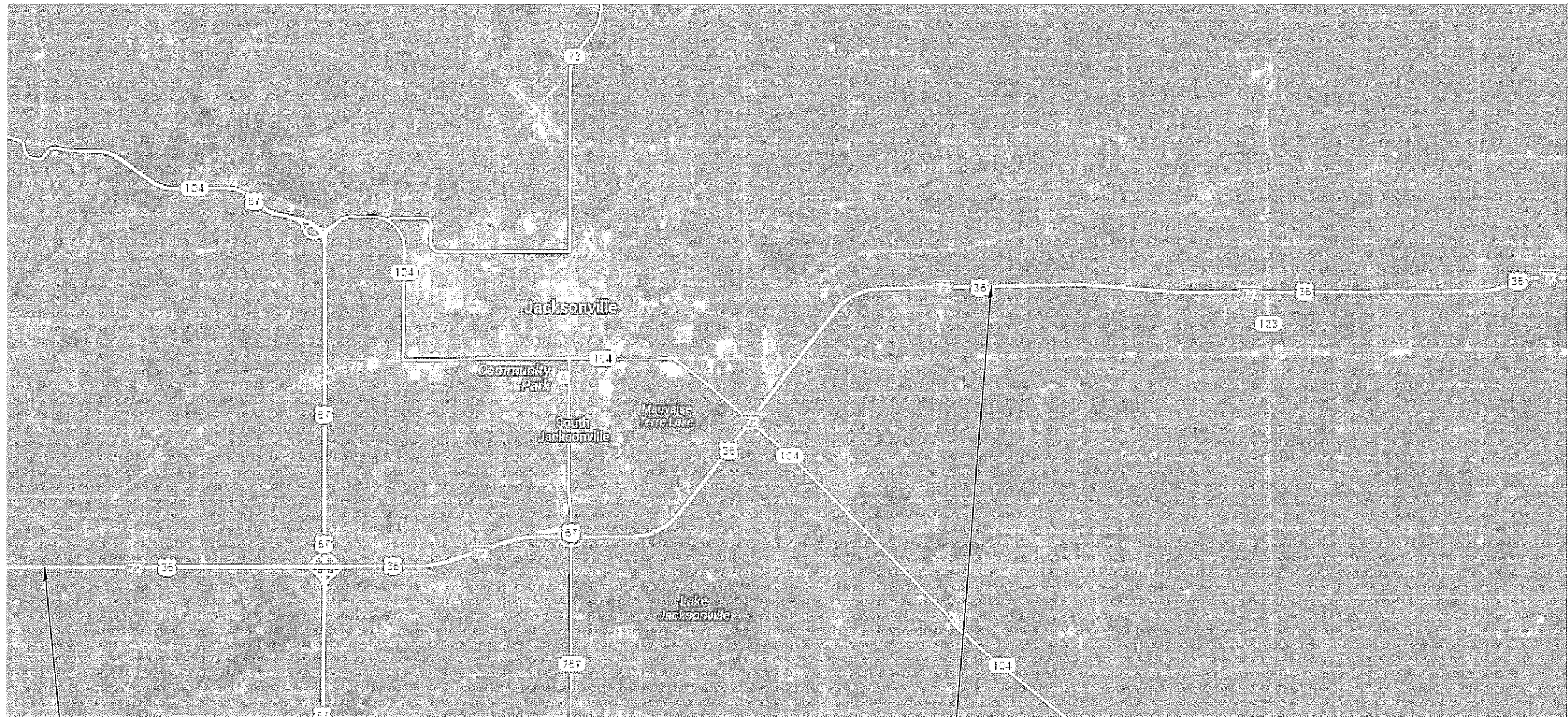
**STATE OF ILLINOIS
DEPARTMENT OF TRANSPORTATION**

SUMMARY OF QUANTITIES

F.A.I. RTE.	SECTION	COUNTY	TOTAL SHEETS	SHEET NO.
72	(69-6,7,8,9) PP	MORGAN	6	3
SCALE: _____			SHEET _____ OF _____ SHEETS	
STA. _____			TO STA. _____	
ILLINOIS FED. AID PROJECT				

CONTRACT NO. 72L02

STA	LANE	LENGTH	WIDTH	AREA	CLASS A, 12 INCH			SAW CUTS	TIE BARS 3/4"	PATCH REINFORCEMENT	PAVEMENT PATCHING, 12 INCH			
					TY II	TY III	TY IV				TY I	TY II	TY III	TY IV
	DL/ML/PL	(FT)	(FT)	(S.Y.)	(S.Y.)	(S.Y.)	(S.Y.)	(FT)	(EA.)	(S.Y.)	(S.Y.)	(S.Y.)	(S.Y.)	
I-72 - MORGAN COUNTY														
(EAST OF) US 67														
49+00	WBPL	9	12	12.0	12.0	--	--	54.0	--	12.0	--	--	--	--
49+00	WBDL	9	12	12.0	12.0	--	--	54.0	--	12.0	--	--	--	--
49+00	WB RAMP	9	20	20.0	--	20.0	--	78.0	7	20.0	--	--	--	--
49+00	EBPL	14	12	18.7	--	18.7	--	64.0	--	18.7	--	--	--	--
49+00	EBDL	14	12	18.7	--	18.7	--	64.0	--	18.7	--	--	--	--
49+00	EB RAMP	14	17	26.4	--	--	26.4	79.0	9	26.4	--	--	--	--
49+00	EB SHOULDER	2	4	0.9	--	--	--	0.0	--	0.9	0.9	--	--	--
(WEST OF) US 67														
49+00	WBPL	13	12	17.3	--	17.3	--	62.0	--	17.3	--	--	--	--
49+00	WBDL	13	12.5	18.1	--	18.1	--	63.5	--	18.1	--	--	--	--
49+00	WB RAMP	13	15	21.7	--	21.7	--	71.0	7	21.7	--	--	--	--
49+00	EBPL	12	12	16.0	--	16.0	--	60.0	--	16.0	--	--	--	--
49+00	EBDL	12	12	16.0	--	16.0	--	60.0	--	16.0	--	--	--	--
49+00	EB RAMP	12	19	25.3	--	--	25.3	81.0	8	25.3	--	--	--	--
49+00	EB SHOULDER	2	4	0.9	--	--	--	0.0	--	0.9	0.9	--	--	--
(EAST OF) MASSEY LANE														
125+00	WBPL	11	12	14.7	14.7	--	--	58.0	--	14.7	--	--	--	--
125+00	WBDL	11	12	14.7	14.7	--	--	58.0	--	14.7	--	--	--	--
125+00	EBPL	10	12	13.3	13.3	--	--	56.0	--	13.3	--	--	--	--
125+00	EBDL	10	12	13.3	13.3	--	--	56.0	--	13.3	--	--	--	--
(WEST OF) MASSEY LANE														
125+00	WBPL	10	12	13.3	13.3	--	--	56.0	--	13.3	--	--	--	--
125+00	WBDL	10	12	13.3	13.3	--	--	56.0	--	13.3	--	--	--	--
125+00	EBPL	11	12	14.7	14.7	--	--	58.0	--	14.7	--	--	--	--
125+00	EBDL	11	12	14.7	14.7	--	--	58.0	--	14.7	--	--	--	--
(EAST OF) ICG RR														
1052+00	WBPL	7	12	9.3	9.3	--	--	50.0	--	9.3	--	--	--	--
1052+00	WBDL	7	12	9.3	9.3	--	--	50.0	--	9.3	--	--	--	--
1052+00	EBPL	9	12	12.0	12.0	--	--	54.0	--	12.0	--	--	--	--
1052+00	EBDL	9	12	12.0	12.0	--	--	54.0	--	12.0	--	--	--	--
(WEST OF) ICG RR														
1052+00	WBPL	7	12	9.3	9.3	--	--	50.0	--	9.3	--	--	--	--
1052+00	WBDL	7	12	9.3	9.3	--	--	50.0	--	9.3	--	--	--	--
1052+00	EBPL	9	12	12.0	12.0	--	--	54.0	--	12.0	--	--	--	--
1052+00	EBDL	9	12	12.0	12.0	--	--	54.0	--	12.0	--	--	--	--
(EAST OF) BRIDGE JUST EAST OF MCKEAN RD OVERHEAD														
1171+00	WBPL	10	12	13.3	13.3	--	--	56.0	--	13.3	--	--	--	--
1171+00	WBDL	10	12	13.3	13.3	--	--	56.0	--	13.3	--	--	--	--
(WEST OF) BRIDGE JUST EAST OF MCKEAN RD OVERHEAD														
1171+00	WBPL	9	12	12.0	12.0	--	--	54.0	--	12.0	--	--	--	--
1171+00	WBDL	9	12	12.0	12.0	--	--	54.0	--	12.0	--	--	--	--
(EAST OF) Mauvaiseterre Creek														
1052+00	WBPL	15	12	20.0	--	20.0	--	66.0	7	20.0	--	--	--	--
1052+00	WBDL	15	12	20.0	--	20.0	--	66.0	7	20.0	--	--	--	--
(WEST OF) Mauvaiseterre Creek														
1052+00	WBPL	9	12	12.0	12.0	--	--	54.0	--	12.0	--	--	--	--
1052+00	WBDL	9	12	12.0	12.0	--	--	54.0	--	12.0	--	--	--	--
1052+00	EBPL	9	12	12.0	12.0	--	--	54.0	--	12.0	--	--	--	--
1052+00	EBDL	9	12	12.0	12.0	--	--	54.0	--	12.0	--	--	--	--
Patching Subtotal:					320.0	186.4	51.8	2230.5	44.5	559.9	1.8	0.0	0.0	0.0



START PROJECT

END PROJECT

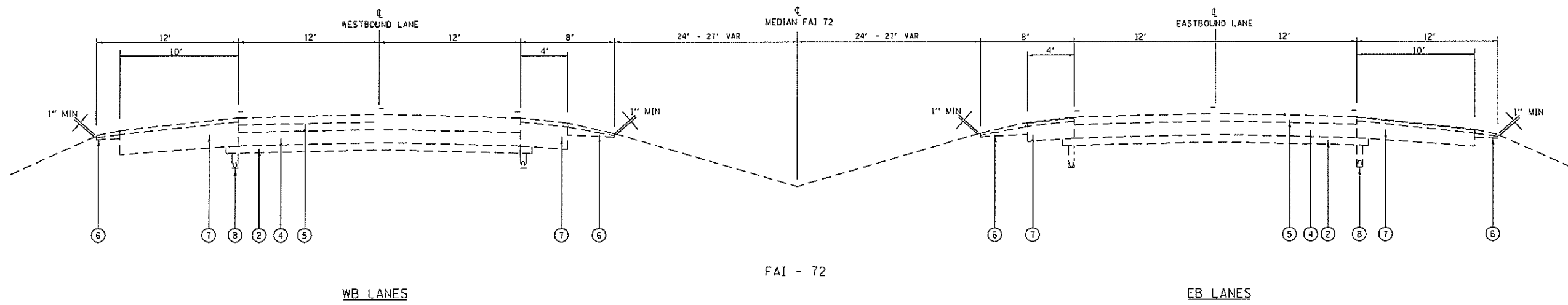
FILE NAME =	USER NAME = nicholsonl	DESIGNED -	REVISED -
S:\CDNTRMAINT_CAD\72L02 - MORGAN CO -	PATCHING\Plans\72L02-SHT-5-locations.dgn	DRAWN -	REVISED -
	PLOT SCALE = 3.0000' / 1" =	CHECKED -	REVISED -
Default	PLOT DATE = 12/13/2018	DATE -	REVISED -

**STATE OF ILLINOIS
DEPARTMENT OF TRANSPORTATION**

TYPICALS

SCALE: SHEET OF SHEETS STA. TO STA.

F.A.I. RTE.	SECTION	COUNTY	TOTAL SHEETS	SHEET NO.
72	(59-6,7,8,9) PP	MORGAN	6	5
CONTRACT NO. 72L02			ILLINOIS FED. AID PROJECT	



LEGEND

- ① EX STABILIZED SUB-BASE 4"
- ② EX AGGREGATE SUB-BASE 4"
- ③ EX RCPCC PAVEMENT 8"
- ④ EX CRPCC PAVEMENT
- ⑤ EX HOT -MIX ASPHALT SURFACE COURSE (VARIABLE THICKNESS)
- ⑥ EX AGGREGAE SHOULDERS
- ⑦ EX HOT-MIX ASPHALT SHOULDERS
- ⑧ EX PIPE UNDERDRAIN

FILE NAME = S:\CONTR\MAINT_CAD\72L02 - MORGAN CD	USER NAME = nicholsonj	DESIGNED -	REVISED -	STATE OF ILLINOIS DEPARTMENT OF TRANSPORTATION	TYPICALS			F.A.I. RTE.	SECTION	COUNTY	TOTAL SHEETS	SHEET NO.
	ATCHING\Plans\72L02-SHT-6\typicals.dgn	DRAWN -	REVISED -					72	(69-6,7,8,9) PP	MORGAN	6	6
PLOT SCALE = 3.0000' / 1" =	CHECKED -	REVISED -			SCALE: SHEET OF SHEETS STA. TO STA.			CONTRACT NO. 72L02				
PLDT DATE = 12/13/2018	DATE -	REVISED -			ILLINOIS FED. AID PROJECT							