

115

03-08-2019 LETTING ITEM 115

STATE OF ILLINOIS
DEPARTMENT OF TRANSPORTATION

F A P RTE	SECTION	COUNTY	TOTAL SHEETS	SHEET NO.
328A	D7 PATCHING 2019-2	EFFINGHAM	4	1
CONTRACT NO. 74881				

FOR INDEX OF SHEETS, SEE SHEET NO. 2

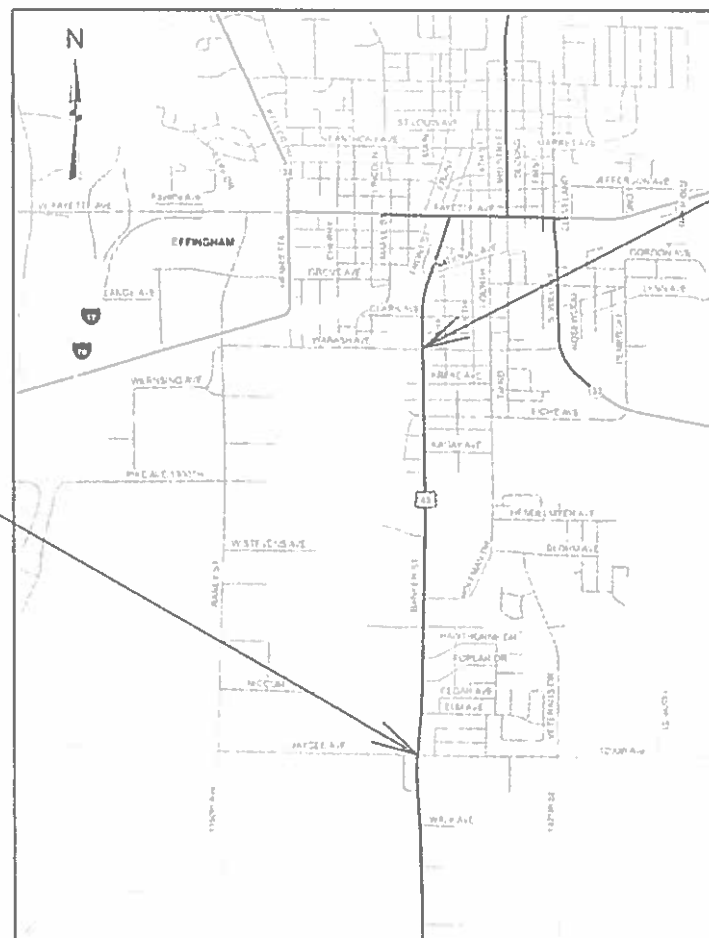
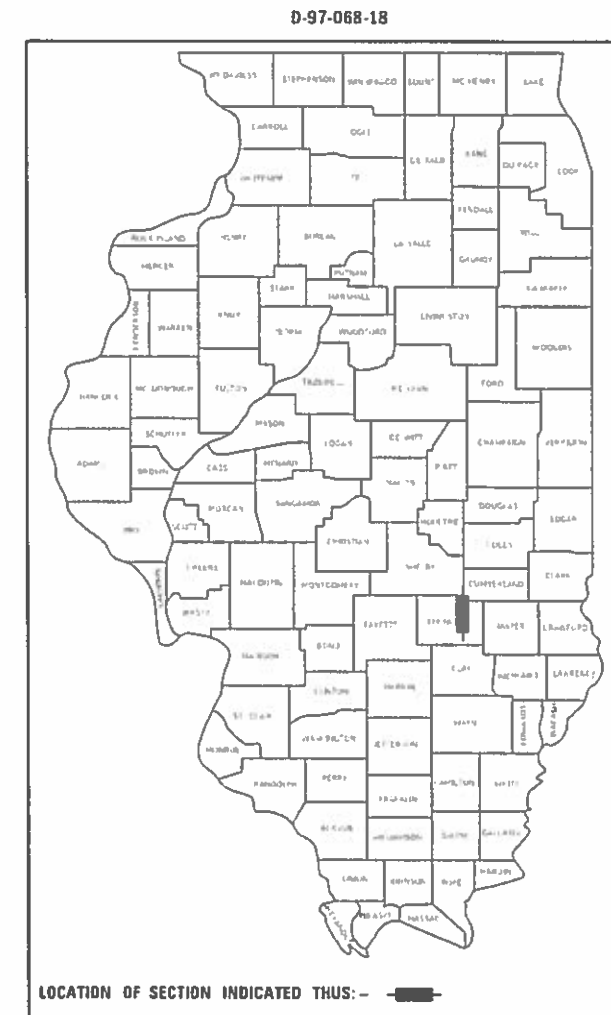
ADT = 15,200

PROPOSED HIGHWAY PLANS

FAP ROUTE 328A (US 45)
SECTION D7 PATCHING 2019-2

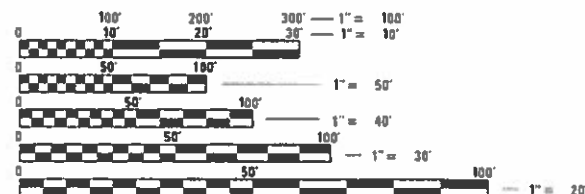
PATCHING
EFFINGHAM COUNTY

C-97-118-18



PROJECT BEGINS:
WABASH AVE
STATION 4 + 48

PROJECT ENDS:
JAYCEE AVE
STATION 84 + 27



FULL SIZE PLANS HAVE BEEN PREPARED USING STANDARD ENGINEERING SCALES. REDUCED SIZED PLANS WILL NOT CONFORM TO STANDARD SCALES. IN MAKING MEASUREMENTS ON REDUCED PLANS, THE ABOVE SCALES MAY BE USED.

J.U.L.I.E.
JOINT UTILITY LOCATION INFORMATION FOR EXCAVATION
1-800-892-0123
OR 811

PROJECT ENGINEER: BRIAN LEWIS
PROJECT MANAGER: TRAVIS WALK

CONTRACT NO. 74881

GROSS LENGTH = 10,877 FT. = 2.06 MILE
NET LENGTH = 10,877 FT. = 2.06 MILE

STATE OF ILLINOIS
DEPARTMENT OF TRANSPORTATION

SUBMITTED NOVEMBER 15 20 18
Jeffrey M South
REGIONAL ENGINEER

Feb 19 20 19
S. A. ETS
ENGINEER OF DESIGN AND ENVIRONMENT

Feb 19 20 19
Paul P. Chif
DIRECTOR OF HIGHWAYS PROJECT IMPLEMENTATION

PRINTED BY THE AUTHORITY
OF THE STATE OF ILLINOIS

INDEX OF SHEETS

<u>SHEET NO.</u>	<u>ITEM</u>
1	COVER SHEET
2	INDEX OF SHEETS, GENERAL NOTES,
3	SUMMARY OF QUANTITIES
4	SCHEDULE OF QUANTITIES

THE FOLLOWING STANDARDS ARE A PART OF THESE PLANS AND ARE INCLUDED AFTER SHEET NO. 4 :

<u>STD. NO.</u>	<u>DESCRIPTION</u>
000001-07	STANDARD SYMBOLS, ABBREVIATIONS AND PATTERNS
001001-02	AREAS OF REINFORCEMENT BARS
001006	DECIMAL OF AN INCH AND OF A FOOT
420701-03	PAVEMENT WELDED WIRE REINFORCEMENT
442101-09	CLASS B PATCHES
701106-02	OFF-ROAD OPERATIONS, MULTILANE, MORE THAN 15' AWAY
701602-10	URBAN LANE CLOSURE, MULTILANE, 2W WITH BIDIRECTIONAL LEFT TURN LANE
701901-08	TRAFFIC CONTROL DEVICES

GENERAL NOTES

THIS PROJECT IS LOCATED ON US ROUTE 45, BANKER ST., FROM WABASH AVENUE TO JAYCEE AVENUE IN EFFINGHAM IN EFFINGHAM COUNTY. THE WORK INCLUDED IN SECTION D7 PATCHING 2019-2 CONSISTS OF PAVEMENT PATCHING, TRAFFIC CONTROL, AND ANY OTHER WORK NECESSARY TO COMPLETE THIS PROJECT.

MODEL: Default
 FILE NAME: P:\1108\B&E\BIDD\ITEC\Illinois.gov\PW\DOT\Documents\DOT_Offices\Director\Projects\74881\CADD\Drawn\CAD\Drawn\74881-1-1-1-1.dwg

USER NAME = steffenmk	DESIGNED - TMW	REVISED -
	DRAWN -	REVISED -
PLOT SCALE = 100.0000 ' / in.	CHECKED -	REVISED -
PLOT DATE = 11/16/2018	DATE - 10/15/18	REVISED -

**STATE OF ILLINOIS
DEPARTMENT OF TRANSPORTATION**

**INDEX OF SHEETS AND
GENERAL NOTES**

SCALE: N/A SHEET 1 OF 1 SHEETS STA. TO STA.

F.A.P. RTE.	SECTION	COUNTY	TOTAL SHEETS	SHEET NO.
328A	D7 PATCHING 2019-2	EFFINGHAM	4	2
			74881	
		ILLINOIS FED. AID PROJECT		

