

F.A.U. RTE.	SECTION	COUNTY	TOTAL SHEETS	SHEET NO.
0002	21-00068-00-RS	MCHENRY	21	1
		ILLINOIS	CONTRACT NO. 61K14	

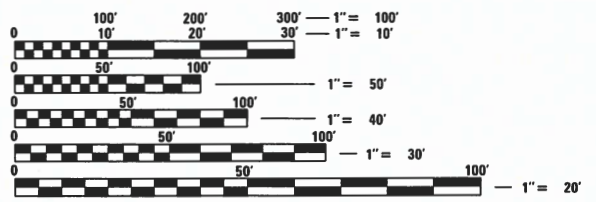
FOR INDEX OF SHEETS SEE SHEET 2 03-08-2024 LETTING ITEM 004

FOR LIST OF APPLICABLE HIGHWAY STANDARDS SEE SHEET 2

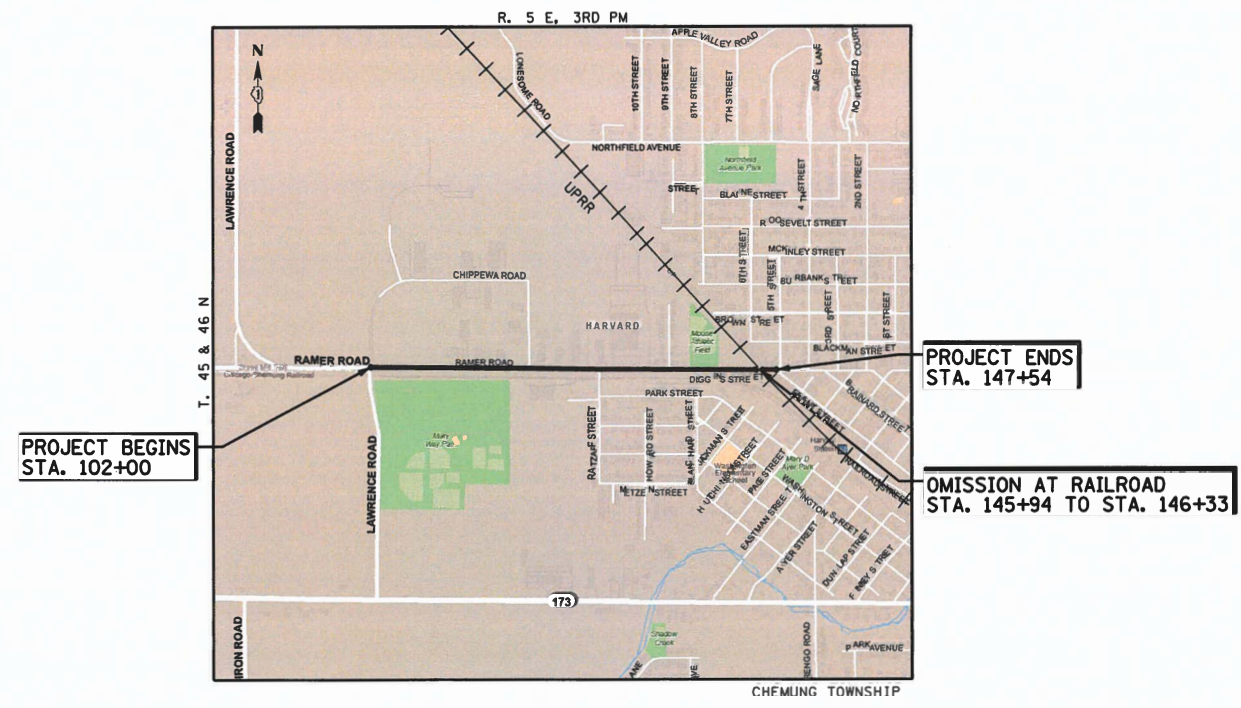
STATE OF ILLINOIS
DEPARTMENT OF TRANSPORTATION

**PLANS FOR PROPOSED
FEDERAL AID HIGHWAY**
DIGGINS STREET (FAU 0002)
LAWRENCE ROAD (CH50) TO FRONT STREET
ROADWAY RESURFACING
SECTION 21-00068-00-RS
PROJECT V4RE(548)
CITY OF HARVARD
MCHENRY COUNTY
JOB NO. C-91-191-21

TRAFFIC DATA
DIGGINS STREET
DESIGN DESTINATION: MAJOR COLLECTOR
POSTED SPEED = 35-45 MPH
TRAFFIC = 2250 (2021)



FULL SIZE PLANS HAVE BEEN PREPARED USING STANDARD ENGINEERING SCALES. REDUCED SIZED PLANS WILL NOT CONFORM TO STANDARD SCALES. IN MAKING MEASUREMENTS ON REDUCED PLANS, THE ABOVE SCALES MAY BE USED.



LOCATION MAP

GROSS LENGTH - 4,554 FT = 0.86 MILES
NET LENGTH - 4,515 FT = 0.86 MILES

FEDERAL AID PROGRAM ENGINEER: CARMEN E. RAMOS, PE, SCHAUMBURG, IL.



Gary Rozwadowski
DATE: 11/09/2023
GARY ROZWADOWSKI
ILLINOIS REGISTRATION No. 062-051689
EXPIRATION DATE: 11/30/2025

J.U.L.I.E.
JOINT UTILITY LOCATION INFORMATION FOR EXCAVATION
1-800-892-0123
OR 811

CONTRACT NO. 61K14

CB CHRISTOPHER B. BURKE ENGINEERING, LTD.
9575 W. Higgins Road, Suite 600
Rosemont, Illinois 60018
(847) 823-0500

PROFESSIONAL DESIGN FIRM NO. 184-001175
EXPIRATION DATE: 04/30/25

STATE OF ILLINOIS DEPARTMENT OF TRANSPORTATION	
Approved	<i>[Signature]</i> City of Harvard, City Administrator
Passed	1-2-2024 <i>[Signature]</i> District 1 Engineer of Local Roads & Streets
Releasing for Bid Based on Limited Review	January 3, 2024 <i>[Signature]</i> Regional Engineer

**PRINTED BY THE AUTHORITY
OF THE STATE OF ILLINOIS**

GENERAL NOTES

SPECIFICATIONS

- ALL CONSTRUCTION SHALL BE COMPLETED IN ACCORDANCE WITH THE "STANDARD SPECIFICATIONS FOR ROAD AND BRIDGE CONSTRUCTION", ADOPTED JANUARY 1, 2022; THE "SUPPLEMENTAL SPECIFICATIONS AND RECURRING SPECIAL PROVISIONS", ADOPTED JANUARY 1, 2024; THE LATEST EDITIONS OF THE "ILLINOIS MANUAL ON UNIFORM TRAFFIC CONTROL DEVICES FOR STREETS AND HIGHWAYS" (IMUTCD) AND "THE STANDARD SPECIFICATIONS FOR WATER AND SEWER MAIN CONSTRUCTION IN ILLINOIS"; THE "DETAILS" IN THE PLANS; AND THE "SPECIAL PROVISIONS" INCLUDED IN THE CONTRACT DOCUMENTS.
- THE CONTRACTOR SHALL BE RESPONSIBLE FOR CONTACTING THE OWNER OF ALL EXISTING FACILITIES SO THAT THE UTILITIES AND THEIR APPURTENANCES MAY BE LOCATED AND ADJUSTED OR MOVED, IF NECESSARY, PRIOR TO THE START OF CONSTRUCTION OPERATIONS. THE CONTRACTOR SHALL COOPERATE WITH ALL UTILITY OWNERS AS PROVIDED FOR IN THE STANDARD SPECIFICATIONS.
- THE LOCATIONS OF EXISTING DRAINAGE STRUCTURES, STORM AND SANITARY SEWERS, WATER MAIN AND OTHER UTILITY LINES ARE APPROXIMATE, AND THE CITY DOES NOT GUARANTEE THEIR ACCURACY.
- THE CONTRACTOR SHALL BE RESPONSIBLE FOR THE PROTECTION OF ALL UNDERGROUND OR SURFACE UTILITIES EVEN THOUGH THEY MAY NOT BE SHOWN ON THE PLANS. ANY UTILITY THAT IS DAMAGED DURING CONSTRUCTION SHALL BE REPAIRED OR REPLACED TO THE SATISFACTION OF THE ENGINEER OR THE CITY.
- BEFORE STARTING ANY EXCAVATION, THE CONTRACTOR SHALL CALL "JULIE" AT 1-800-892-0123 FOR FIELD LOCATIONS OF BURIED ELECTRIC, TELEPHONE, GAS AND CABLE TELEVISION FACILITIES. (48 HOURS NOTIFICATION IS REQUIRED.)
- WHEN THE PLANS OR SPECIAL PROVISIONS INCLUDE INFORMATION PERTAINING TO THE LOCATION OF UNDERGROUND UTILITY FACILITIES, SUCH INFORMATION REPRESENTS ONLY THE OPINION OF THE CITY AS TO THE LOCATION OF SUCH UTILITIES AND IS ONLY INCLUDED FOR THE CONVENIENCE OF THE BIDDER.
- ANY EXISTING PAVEMENT DAMAGED BY THE CONTRACTOR DURING CONSTRUCTION SHALL BE REPLACED/REPAIRED BY THE CONTRACTOR IN ACCORDANCE WITH ARTICLE 107.30 OF THE STANDARD SPECIFICATIONS.
- THE CONTRACTOR SHALL PROVIDE ALL NECESSARY PROTECTION FOR EXISTING UTILITIES IN CONFORMANCE WITH THE AFFECTED UTILITY COMPANIES REQUIREMENTS AS MAY BE REQUIRED TO PERFORM THE WORK OF THIS CONTRACT.
- THE WORK PERFORMED UNDER THIS CONTRACT SHALL IN NO WAY INTERFERE WITH THE NORMAL OPERATION OF ANY EXISTING UTILITY SERVICE. THE CONTRACTOR SHALL FURNISH ALL NECESSARY ITEMS OF EQUIPMENT REQUIRED TO MAINTAIN SUCH NORMAL OPERATION.
- WHENEVER, DURING CONSTRUCTION, OPERATIONS ANY LOOSE MATERIAL IS DEPOSITED IN THE FLOW LINE OF DRAINAGE STRUCTURES SUCH THAT THE NATURAL FLOW OF WATER IS OBSTRUCTED, IT SHALL BE REMOVED AT THE CLOSE OF EACH WORKING DAY. AT THE CONCLUSION OF CONSTRUCTION OPERATIONS, ALL UTILITY STRUCTURES SHALL BE FREE FROM DIRT AND DEBRIS.
- WHEN EXISTING DRAINAGE OR SEWERAGE FACILITIES ARE DISTURBED, THE CONTRACTOR SHALL PROVIDE AND MAINTAIN TEMPORARY OUTLETS AND CONNECTIONS FOR ALL PUBLIC OR PRIVATE DRAINS, SEWERS, OR CATCH BASINS, HE SHALL PROVIDE FACILITIES TO TAKE ALL STORM WATER WHICH WOULD BE RECEIVED BY THESE FACILITIES AND DISCHARGE SAME.

MISCELLANEOUS

- DIMENSIONS: IT SHALL BE THE CONTRACTOR'S RESPONSIBILITY TO VERIFY ALL DIMENSIONS AND CONDITIONS EXISTING IN THE FIELD PRIOR TO ORDERING MATERIALS AND BEGINNING CONSTRUCTION.
- ALL SAWCUTTING SHALL BE INCLUDED IN REMOVAL ITEMS AND SHALL BE PERFORMED PRIOR TO BEGINNING REMOVAL. ANY ITEMS OF WORK REMOVED PRIOR TO SAWCUTTING WILL NOT BE MEASURED FOR PAYMENT.
- RELOCATING EXISTING SIGNS: EXISTING SIGNS WHICH ARE IN CONFLICT WITH PROPOSED IMPROVEMENTS SHALL BE REMOVED AND REINSTALLED UPON COMPLETION OF CONFLICTING IMPROVEMENTS IN ACCORDANCE WITH THE ILLINOIS "MANUAL OF UNIFORM TRAFFIC CONTROL DEVICES" AND THE STANDARD SPECIFICATIONS FOR ROAD AND BRIDGE CONSTRUCTION". STOP SIGNS, SPEED LIMIT SIGNS, AND STREET NAME SIGNS SHALL BE UP AND VISIBLE AT ALL TIMES.

- PAY ITEMS IN THE SUMMARY OF QUANTITIES HAVE BEEN ESTIMATED. IF, IN THE ENGINEER'S OPINION, THE WORK IS NOT REQUIRED, THE ITEM WILL BE DEDUCTED FROM THE CONTRACT AND NO ADDITIONAL COMPENSATION WILL BE ALLOWED.
- THE CONTRACTOR SHALL NOTIFY THE CITY OF HARVARD AT (815) 943 6468, AT LEAST 48 HOURS IN ADVANCE OF BEGINNING WORK AND COORDINATE ALL CONSTRUCTION OPERATIONS WITH THE ENGINEER.
- IF THERE ARE DISCREPANCIES BETWEEN THE JOB SITE AND WHAT IS SHOWN ON THE CONSTRUCTION PLANS, THE CONTRACTOR MUST IMMEDIATELY REPORT TO THE ENGINEER BEFORE DOING ANY WORK. THE CONTRACTOR SHALL SECURE WRITTEN INSTRUCTION FROM THE ENGINEER PRIOR TO PROCEEDING WITH ANY PART OF THE WORK AFFECT BY OMISSIONS OR DISCREPANCIES. IN FAILING TO SECURE SUCH INSTRUCTION, THE CONTRACTOR WILL BE CONSIDERED TO HAVE PROCEEDED AT HIS/HER OWN RISK. IN THE EVENT OF ANY DOUBT OR QUESTIONS ARISING WITH RESPECT TO THE TRUE MEANING OF THE CONSTRUCTIONS OR SPECIFICATIONS, THE DECISION OF THE ENGINEER SHALL BE FINAL AND CONCLUSIVE.
- NEITHER THE ENGINEER NOR THE CITY IS RESPONSIBLE FOR THE CONSTRUCTION MEANS, METHODS, TECHNIQUES, SEQUENCES OR PROCEDURES, TIME OF PERFORMANCE, PROGRAMS OR ANY SAFETY PRECAUTIONS USED BY THE CONTRACTOR.
- THE CONTRACTOR SHALL LIMIT HIS/HER CONSTRUCTION ACTIVITIES TO THE WORK AREAS DESIGNATED ON THE PLANS. ANY DAMAGE TO AREAS OUTSIDE OF THESE LIMITS SHALL BE REPAIRED BY THE CONTRACTOR TO THE SATISFACTION OF THE ENGINEER.

SUBSURFACE EXPLORATION DATA

- LIMITED INVESTIGATION OF SUBSURFACE CONDITIONS AT THE PROPOSED SITE OF WORK HAS BEEN MADE FOR THE PURPOSE OF DESIGN. THE CITY OF HARVARD AND CHRISTOPHER B. BURKE ENGINEERING, LTD. ASSUME NO RESPONSIBILITY WHATSOEVER WITH RESPECT TO THE SUFFICIENCY OR ACCURACY OF THESE PRELIMINARY INVESTIGATIONS, NOR THEIR INTERPRETATION, AND THERE IS NO GUARANTEE, EITHER EXPRESSED OR IMPLIED THAT CONDITIONS INDICATED ARE REPRESENTATIVE OF THOSE EXISTING THROUGHOUT THE WORK OR ANY PART OF IT, OR THAT UNFORESEEN DEVELOPMENTS MAY OCCUR. ALL REMOVAL OR EXCAVATION ITEMS BEING DISPOSED OF AT AN UNCONTAMINATED SOIL FILL OPERATION OR CLEAN CONSTRUCTION AND DEMOLITION DEBRIS (CCDD) FILL SITE SHALL MEET THE REQUIREMENTS OF PUBLIC ACT 96-1416.

MCHENRY COUNTY DIVISION OF TRANSPORTATION NOTES

- CONSTRUCTION SIGNAGE SHALL NOT BLOCK ANY MCDOT SIGNS AND CANNOT USE THE MCDOT SIGN POSTS.
- CONTACT AND NOTIFY THE MCHENRY COUNTY DIVISION OF TRANSPORTATION (MCDOT) AT (815)334-4960 AT LEAST 48 HOURS IN ADVANCE OF PLACING SIGNAGE ALONG THE COUNTY HIGHWAY(S).
- CONSTRUCTION SIGN INSTALLATION CONTRACTOR SHALL CALL JULIE FOR UTILITY LOCATES. MCDOT MAY HAVE STORM DRAIN, SIGNAL AND LIGHTING FACILITIES IN THESE AREAS THAT WILL REQUIRE LOCATES. CONTACT JULIE AT (800)892-0123.
- UPON AWARDDING OF THE CONTRACT, THE CONTRACTOR FOR THE PROJECT SHALL ADD "MCHENRY COUNTY, THE MCHENRY COUNTY DIVISION OF TRANSPORTATION, ITS EMPLOYEES AND AGENTS" AS ADDITIONAL INSURED PARTIES ON THE CERTIFICATE OF INSURANCE (COI), AND SHALL PROVIDE A COPY OF THE COI TO MCDOT, PROVIDE 24-HOUR CONTACT PERSONNEL INFORMATION FOR THE SIGNAGE COMPANY, AND PROVIDE BEGINNING AND ENDING DATES THE SIGNAGE WILL BE UP.

COMMITMENTS

- THERE ARE NO COMMITMENTS ASSOCIATED WITH THIS PROJECT.

INDEX OF SHEETS

1	COVER SHEET
2	GENERAL NOTES, INDEX OF SHEETS, & HIGHWAY STANDARDS
3-5	SUMMARY OF QUANTITIES
6	TYPICAL SECTIONS
7-10	EXISTING CONDITIONS & REMOVAL PLANS
11-14	PROPOSED ROADWAY, PAVEMENT MARKING, & EROSION CONTROL PLANS
15	DETAILS FOR FRAMES AND LIDS ADJUSTMENT WITH MILLING (BD-08)
16	PAVEMENT PATCHING FOR HMA SURFACED PAVEMENT (BD-22)
17	BUTT JOINT AND HMA TAPER DETAILS (BD-32)
18	TRAFFIC CONTROL AND PROTECTION FOR SIDE ROADS, INTERSECTIONS, AND DRIVEWAYS (TC-10)
19	DISTRICT ONE TYPICAL PAVEMENT MARKINGS (TC-13)
20	SHORT TERM PAVEMENT MARKING LETTERS AND SYMBOLS (TC-16)
21	ARTERIAL ROAD INFORMATION SIGN (TC-22)

HIGHWAY STANDARDS

442201-03	CLASS C AND D PATCHES
701006-05	OFF-ROAD OPERATIONS, 2L, 2W, 15' (4.5M) TO 24" (600MM) FROM PAVEMENT EDGE
701301-04	LANE CLOSURE, 2L, 2W, SHORT TIME OPERATIONS
701311-03	LANE CLOSURE, 2L, 2W, MOVING OPERATIONS – DAY ONLY
701501-06	URBAN LANE CLOSURE, 2L, 2W, UNDIVIDED
701701-10	URBAN LANE CLOSURE, MULTILANE INTERSECTION
701901-09	TEMPORARY CONTROL DEVICES

FILE NAME =	USER NAME = pmagnelli	DESIGNED - GR	REVISED -	STATE OF ILLINOIS DEPARTMENT OF TRANSPORTATION	DIGGINS STREET RESURFACING GENERAL NOTES, INDEX OF SHEETS, & HIGHWAY STANDARDS	F.A.U. RTE.	SECTION	COUNTY	TOTAL SHEETS	SHEET NO.
N:\HARVARD\110001.00075\Civ1\NOT1_110001.00075.DGN		DRAWN - PM	REVISED -			0002	21-00068-00-RS	MCHENRY	21	2
Default	PLOT SCALE = 10'	CHECKED - GR	REVISED -			CONTRACT NO. 61K14				
	PLOT DATE = 12/15/2023	DATE -	REVISED -			SCALE: 10'	SHEET 1 OF 1 SHEETS	STA. N/A	TO STA. N/A	ILLINOIS FED. AID PROJECT

CODE NUMBER	ITEM	UNIT	0005 ROADWAY 80% STU/10% LOCAL
20200100	EARTH EXCAVATION	CU YD	413
20201200	REMOVAL AND DISPOSAL OF UNSUITABLE MATERIAL	CU YD	243
21101615	TOPSOIL FURNISH AND PLACE, 4"	SQ YD	2125
25000110	SEEDING, CLASS 1A	ACRE	0.5
25000400	NITROGEN FERTILIZER NUTRIENT	POUND	40
25000600	POTASSIUM FERTILIZER NUTRIENT	POUND	40
25100630	EROSION CONTROL BLANKET	SQ YD	2125
28000510	INLET FILTERS	EACH	10
30300001	AGGREGATE SUBGRADE IMPROVEMENT	CU YD	243
40600290	BITUMINOUS MATERIALS (TACK COAT)	POUND	9699
40600400	MIXTURE FOR CRACKS, JOINTS, AND FLANGEWAYS	TON	29
40600982	HOT-MIX ASPHALT SURFACE REMOVAL - BUTT JOINT	SQ YD	83
40603205	POLYMERIZED HOT-MIX ASPHALT BINDER COURSE, IL-9.5, N50	TON	791
40604060	HOT-MIX ASPHALT SURFACE COURSE, IL-9.5, MIX "D", N50	TON	1609
44000161	HOT-MIX ASPHALT SURFACE REMOVAL, 3"	SQ YD	14366
44201701	CLASS D PATCHES, TYPE I, 5 INCH	SQ YD	149

* SPECIALTY ITEMS

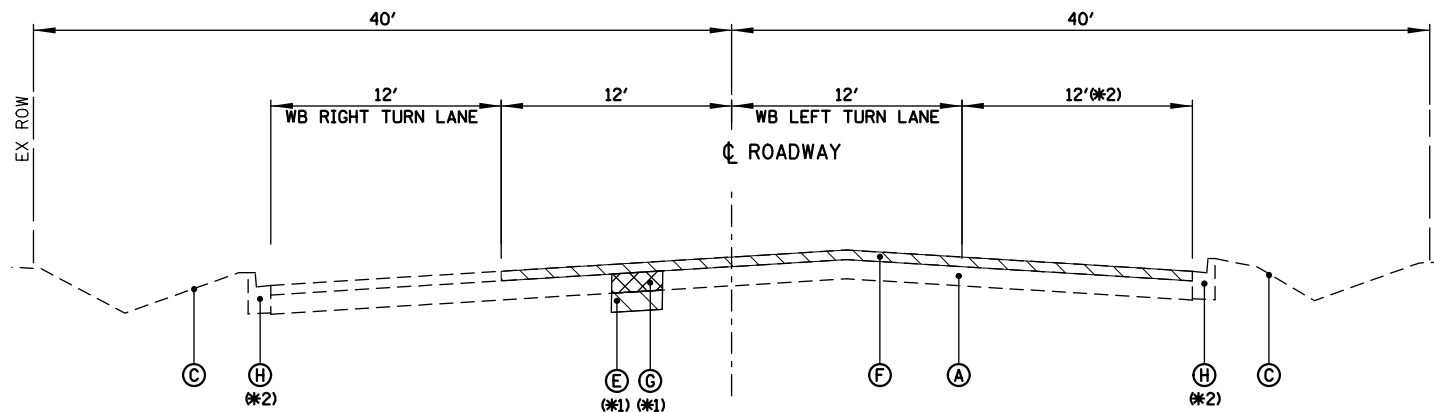
FILE NAME = N:\HARVARD\110001.00075\Civil\5001.110001.00075.DGN	USER NAME = pmagnelli	DESIGNED - GR	REVISED -	STATE OF ILLINOIS DEPARTMENT OF TRANSPORTATION	DIGGINS STREET RESURFACING SUMMARY OF QUANTITIES			F.A.U. RTE. 0002	SECTION 21-00068-00-RS	COUNTY MCHENRY	TOTAL SHEETS 21	SHEET NO. 3
Default	PLOT SCALE = 10'	DRAWN - PM	REVISED -					SCALE: 10'	SHEET 1 OF 3 SHEETS	STA. N/A	TO STA. N/A	CONTRACT NO. 61K14
	PLOT DATE = 12/15/2023	CHECKED - GR	REVISED -		ILLINOIS FED. AID PROJECT							
		DATE -	REVISED -									

CODE NUMBER	ITEM	UNIT	0005 ROADWAY 90% STU/10% LOCAL
44201705	CLASS D PATCHES, TYPE II, 5 INCH	SQ YD	219
44201709	CLASS D PATCHES, TYPE III, 5 INCH	SQ YD	364
44201711	CLASS D PATCHES, TYPE IV, 5 INCH	SQ YD	722
48101500	AGGREGATE SHOULDERS, TYPE B 6"	SQ YD	1990
60266600	VALVE BOXES TO BE ADJUSTED	EACH	1
66900200	NON-SPECIAL WASTE DISPOSAL	CU YD	155
66900530	SOIL DISPOSAL ANALYSIS	EACH	2
66901001	REGULATED SUBSTANCES PRE-CONSTRUCTION PLAN	L SUM	1
66901003	REGULATED SUBSTANCES FINAL CONSTRUCTION REPORT	L SUM	1
66901006	REGULATED SUBSTANCES MONITORING	CAL DA	2
67100100	MOBILIZATION	LSUM	1
70102620	TRAFFIC CONTROL AND PROTECTION, STANDARD 701501	L SUM	1
70102635	TRAFFIC CONTROL AND PROTECTION, STANDARD 701701	L SUM	1
70300100	SHORT TERM PAVEMENT MARKING	FOOT	416
70300150	SHORT TERM PAVEMENT MARKING REMOVAL	SQ FT	139
70300211	TEMPORARY PAVEMENT MARKING LETTERS AND SYMBOLS - PAINT	SQ FT	268
70300221	TEMPORARY PAVEMENT MARKING - LINE 4" - PAINT	FOOT	7186

CODE NUMBER	ITEM	UNIT	0005 ROADWAY 80% STU/10% LOCAL
70300241	TEMPORARY PAVEMENT MARKING - LINE 6"- PAINT	FOOT	401
70300281	TEMPORARY PAVEMENT MARKING - LINE 24"- PAINT	FOOT	168
* 78000100	THERMOPLASTIC PAVEMENT MARKING - LETTERS AND SYMBOLS	SQ FT	134
* 78000200	THERMOPLASTIC PAVEMENT MARKING - LINE 4"	FOOT	10438
* 78000400	THERMOPLASTIC PAVEMENT MARKING - LINE 6"	FOOT	356
* 78000650	THERMOPLASTIC PAVEMENT MARKING - LINE 24"	FOOT	84
78300200	RAISED REFLECTIVE PAVEMENT MARKER REMOVAL	EACH	47
X2020108	GRADING AND SHAPING (SPECIAL)	SQ YD	615
X6030310	FRAMES AND LIDS TO BE ADJUSTED (SPECIAL)	EACH	9
Z0013798	CONSTRUCTION LAYOUT	L SUM	1
Z0030850	TEMPORARY INFORMATION SIGNING	SQ FT	78
Z0048665	RAILROAD PROTECTIVE LIABILITY INSURANCE	L SUM	1

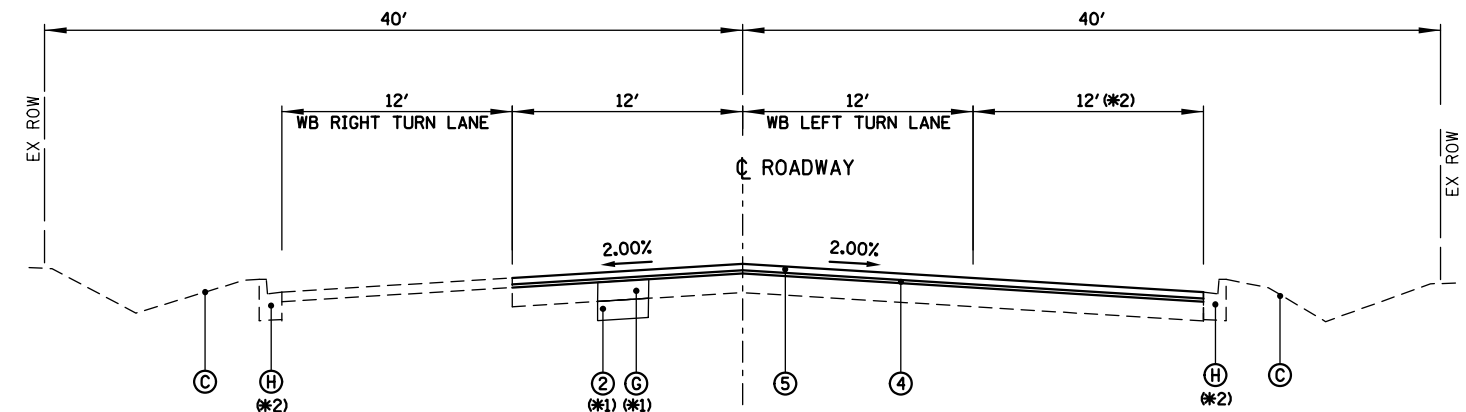
* SPECIALTY ITEMS

FILE NAME =	USER NAME = pmagnelli	DESIGNED - GR	REVISED -	STATE OF ILLINOIS DEPARTMENT OF TRANSPORTATION	DIGGINS STREET RESURFACING SUMMARY OF QUANTITIES	F.A.U. RTE.	SECTION	COUNTY	TOTAL SHEETS	SHEET NO.	
N:\HARVARD\110001.00075\Civil\5001.110001.00075.DGN		DRAWN - PM	REVISED -			0002	21-00068-00-RS	MCHENRY	21	5	
Default	PLOT SCALE = 10'	CHECKED - GR	REVISED -			CONTRACT NO. 61K14					
	PLOT DATE = 12/15/2023	DATE -	REVISED -			SCALE: 10'	SHEET 3 OF 3 SHEETS	STA. N/A	TO STA. N/A	ILLINOIS FED. AID PROJECT	



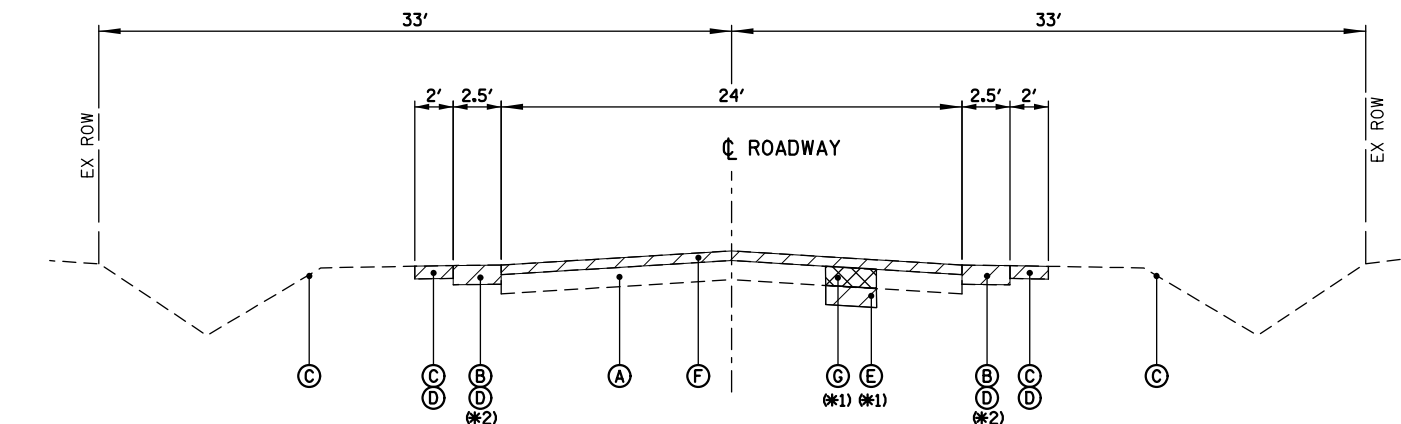
EXISTING TYPICAL SECTION

DIGGINS STREET
STA. 102+00 TO STA. 105+67



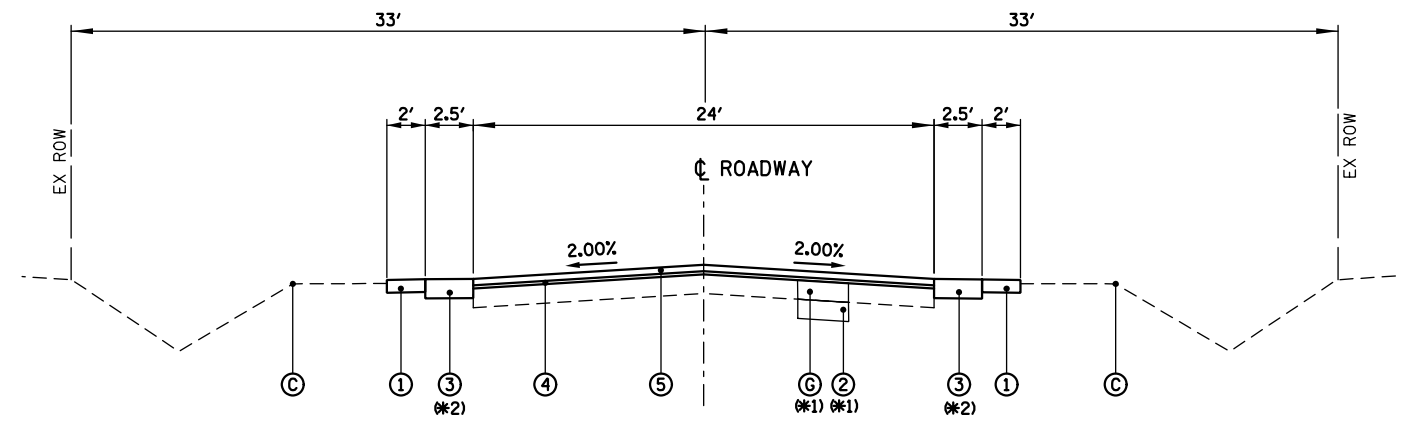
PROPOSED TYPICAL SECTION

DIGGINS STREET
STA. 102+00 TO STA. 105+67



EXISTING TYPICAL SECTION

DIGGINS STREET
STA. 105+67 TO STA. 147+54



PROPOSED TYPICAL SECTION

DIGGINS STREET
STA. 105+67 TO STA. 147+54

NOTE:
PAVEMENT PATCHING SHALL BE COMPLETED FOLLOWING HMA SURFACE REMOVAL

⊛(1) AT LOCATIONS AS DIRECTED BY THE ENGINEER

⊛(2) EXISTING CURB AND GUTTER (TO REMAIN) FROM 102+00 TO 108+20

DIGGINS STREET EXISTING PAVEMENT CORE DATA				
CORE NUMBER	STATION FROM	STATION TO	TOTAL BITUMINOUS CONCRETE THICKNESS	TOTAL GRANULAR BASE COURSE THICKNESS
C-1	102+00	105+30	13.75"	18.5"
C-2	105+30	110+60	14.25"	18.5"
C-3	110+60	115+80	7"	20"
C-4	115+80	120+70	6"	19"
C-5	120+70	125+50	8.5"	17.5"
C-6	125+50	130+40	7"	11"
C-7	130+40	137+40	10.25"	12"
C-8	137+40	144+70	5.75"	12"
C-9	144+70	147+54	8"	21"

HOT-MIX ASPHALT MIXTURE REQUIREMENTS		
MIXTURE TYPE	AIR VOIDS @NDES	QMP
DIGGINS STREET RESURFACING		
HOT-MIX ASPHALT SURFACE COURSE, MIX "D", IL-9.5, N50; 2"	4% @ 50 GYR	LR 1030 - 2
POLYMERIZED HOT-MIX ASPHALT BINDER COURSE, IL-9.5, N50; 1"	3.5% @ 50 GYR	LR 1030 - 2
CLASS D PATCHES, 5"		
HOT-MIX ASPHALT BINDER COURSE, IL-19.0, N50; 5"	4% @ 50 GYR	LR 1030 - 2
QMP DESIGNATION: QUALITY CONTROL / QUALITY ASSURANCE (QC/QA) PER LR 1030-2		

THE UNIT WEIGHT USED TO CALCULATE ALL HOT-MIX ASPHALT SURFACE MIXTURES IS 112 LBS/SQYD/IN.

THE "AC TYPE" FOR NON-POLYMERIZED HMA MIXES SHALL BE "PG-76-22" UNLESS MODIFIED BY RECLAIMED MATERIALS SPECIFICATIONS.

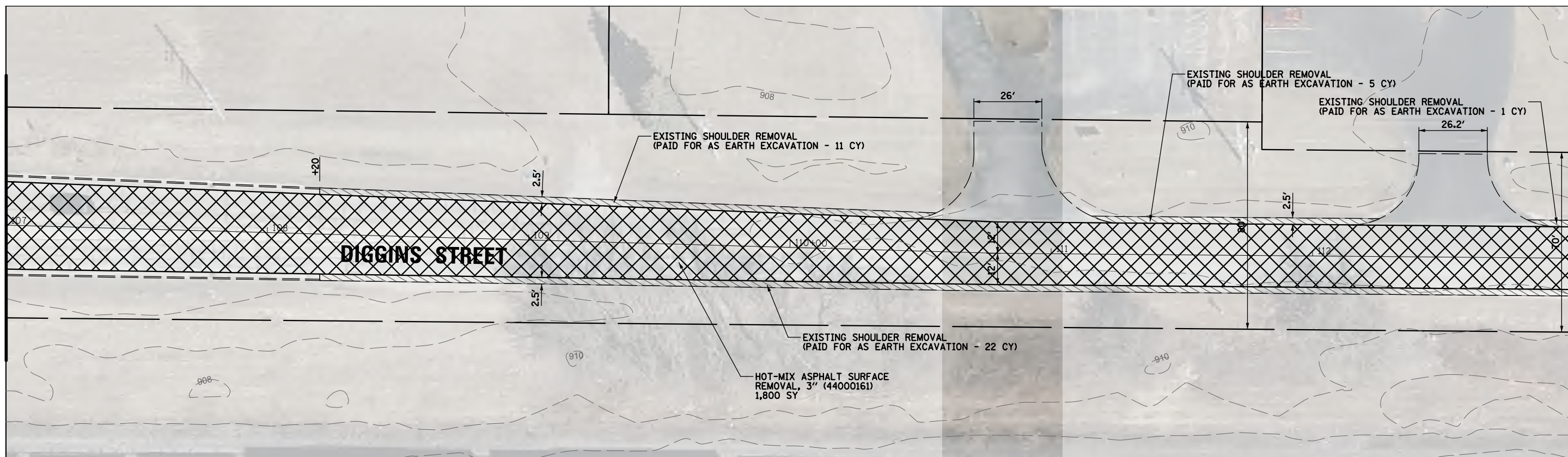
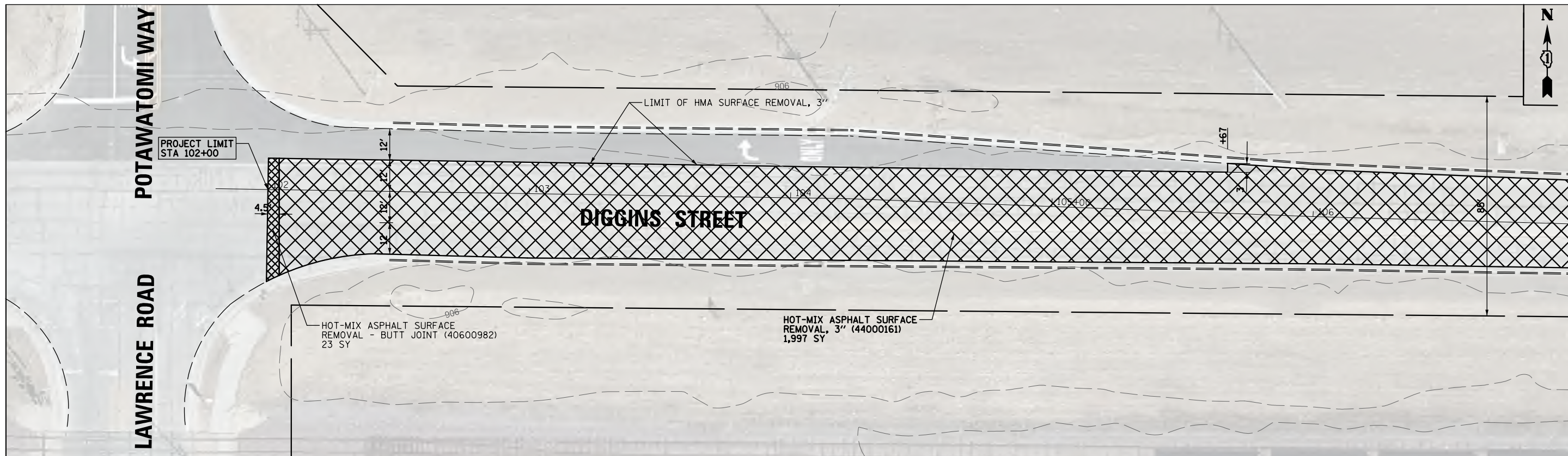
LEGEND

- ⊘ REMOVAL ITEMS
- ⊙(A) EXISTING PAVEMENT
- ⊙(B) EXISTING SHOULDER
- ⊙(C) EXISTING TOPSOIL AND GROUND COVER
- ⊙(D) EARTH EXCAVATION (20200100)
- ⊙(E) REMOVAL AND DISPOSAL OF UNSUITABLE MATERIAL (20201200)
- ⊙(F) HOT-MIX ASPHALT SURFACE REMOVAL, 3" (44000161)
- ⊙(G) CLASS D PATCHES, TYPE I, 5" (44201701)
CLASS D PATCHES, TYPE II, 5" (44201705)
CLASS D PATCHES, TYPE III, 5" (44201709)
CLASS D PATCHES, TYPE IV, 5" (44201711)
- ⊙(H) EXISTING CURB AND GUTTER
- ① TOPSOIL FURNISH AND PLACE, 4" (21101615)
SEEDING, CLASS 1A (25000110)
NITROGEN FERTILIZER NUTRIENT (25000400)
POTASSIUM FERTILIZER NUTRIENT (25000600)
EROSION CONTROL BLANKET (25100630)
- ② AGGREGATE SUBGRADE IMPROVEMENT (30300001)
- ③ AGGREGATE SHOULDER, TYPE B, 6" (48101500)
- ④ POLYMERIZED HOT-MIX ASPHALT BINDER COURSE, IL-9.5, N50 (40603205)
- ⑤ HOT-MIX ASPHALT SURFACE COURSE, IL-9.5, MIX "D", N50 (40604060)

FILE NAME =	USER NAME = pmagnelli	DESIGNED - GR	REVISED -
N:\HARVARD\110001.00075\Civil\TYP1.110001.00075.DGN		DRAWN - PM	REVISED -
Default	PLOT SCALE = 18'	CHECKED - GR	REVISED -
	PLOT DATE = 12/15/2023	DATE -	REVISED -

**STATE OF ILLINOIS
DEPARTMENT OF TRANSPORTATION**

DIGGINS STREET RESURFACING TYPICAL SECTIONS		F.A.U. RTE.	SECTION	COUNTY	TOTAL SHEETS	SHEET NO.
SCALE: 10'	SHEET 1 OF 1 SHEETS	0002	21-00068-00-RS	MCHENRY	21	6
STA. N/A TO STA. N/A		CONTRACT NO. 61K14				
ILLINOIS FED. AID PROJECT						



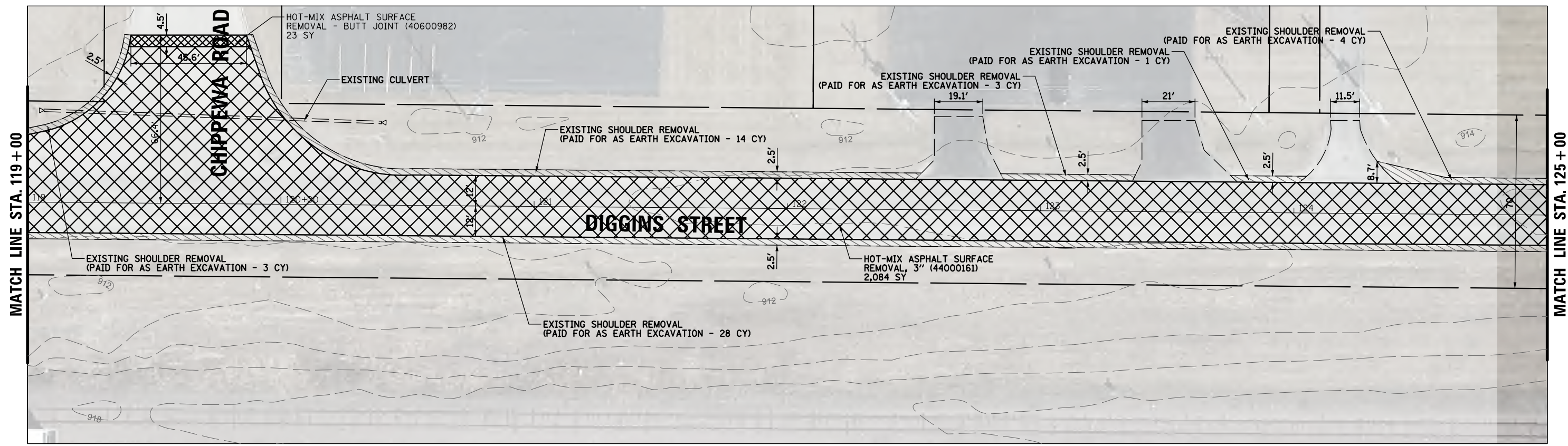
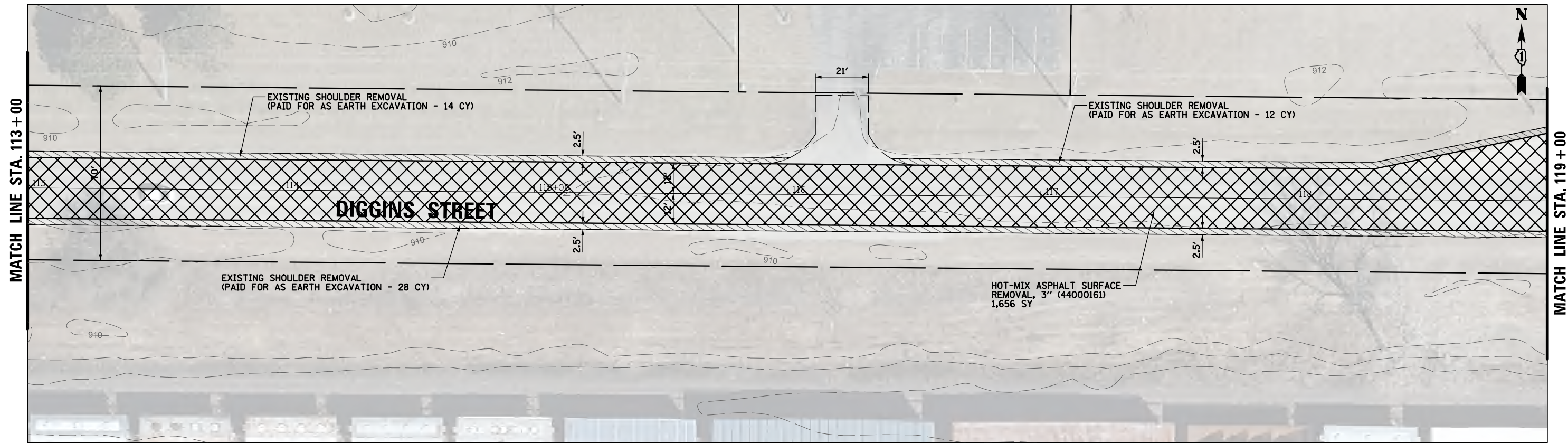
FILE NAME =	USER NAME = pmagnelli	DESIGNED - GR	REVISED -
N:\HARVARD\110001.00075\Civ11\REMI_110001.00075.DGN		DRAWN - PM	REVISED -
Default	PLOT SCALE = 40'	CHECKED - GR	REVISED -
	PLOT DATE = 12/15/2023	DATE -	REVISED -

**STATE OF ILLINOIS
DEPARTMENT OF TRANSPORTATION**

**DIGGINS STREET RESURFACING
EXISTING CONDITIONS & REMOVAL PLANS**

SCALE: 40' SHEET 1 OF 4 SHEETS STA. 102+00 TO STA. 113+00

F.A.U. RTE.	SECTION	COUNTY	TOTAL SHEETS	SHEET NO.
0002	21-00068-00-RS	MCHENRY	21	7
CONTRACT NO. 61K14				
ILLINOIS FED. AID PROJECT				



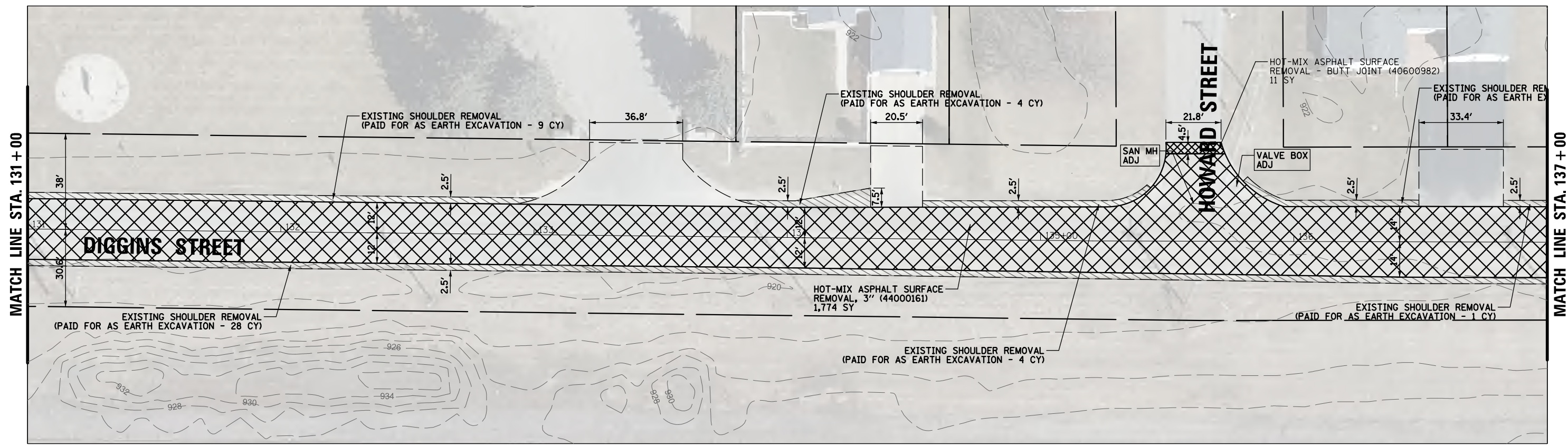
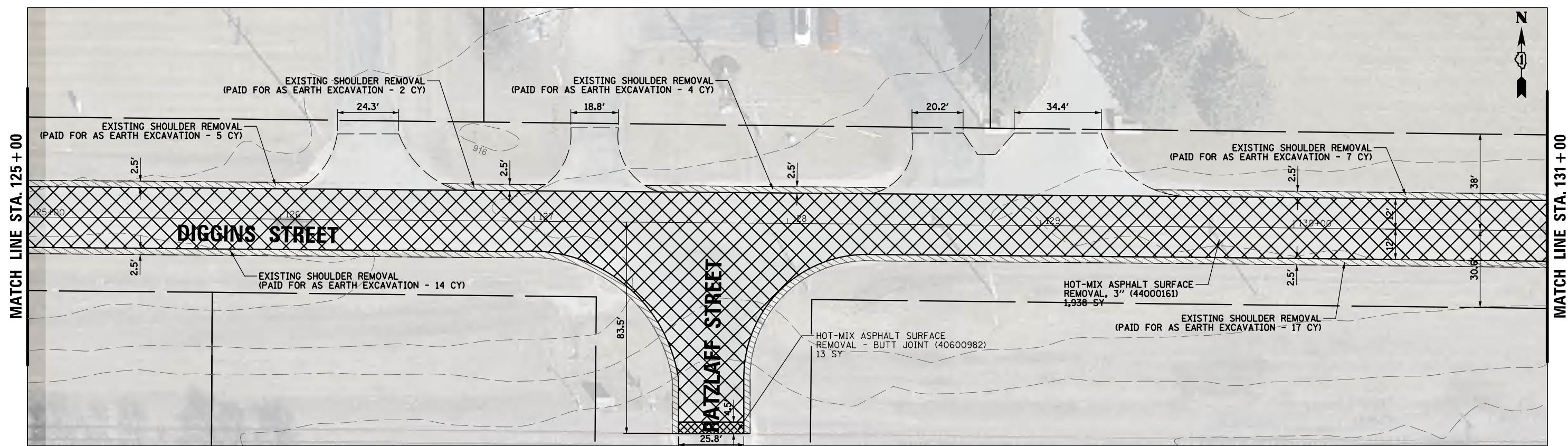
FILE NAME =	USER NAME = pmagnelli	DESIGNED - GR	REVISED -
N:\HARVARD\110001.00075\Civil1\REM2.110001.00075.DGN		DRAWN - PM	REVISED -
Default	PLOT SCALE = 48'	CHECKED - GR	REVISED -
	PLOT DATE = 12/15/2023	DATE -	REVISED -

**STATE OF ILLINOIS
DEPARTMENT OF TRANSPORTATION**

**DIGGINS STREET RESURFACING
EXISTING CONDITIONS & REMOVAL PLANS**

SCALE: 40' SHEET 2 OF 4 SHEETS STA. 113+00 TO STA. 125+00

F.A.U. RTE.	SECTION	COUNTY	TOTAL SHEETS	SHEET NO.
0002	21-00068-00-RS	MCHENRY	21	8
CONTRACT NO. 61K14				
ILLINOIS FED. AID PROJECT				



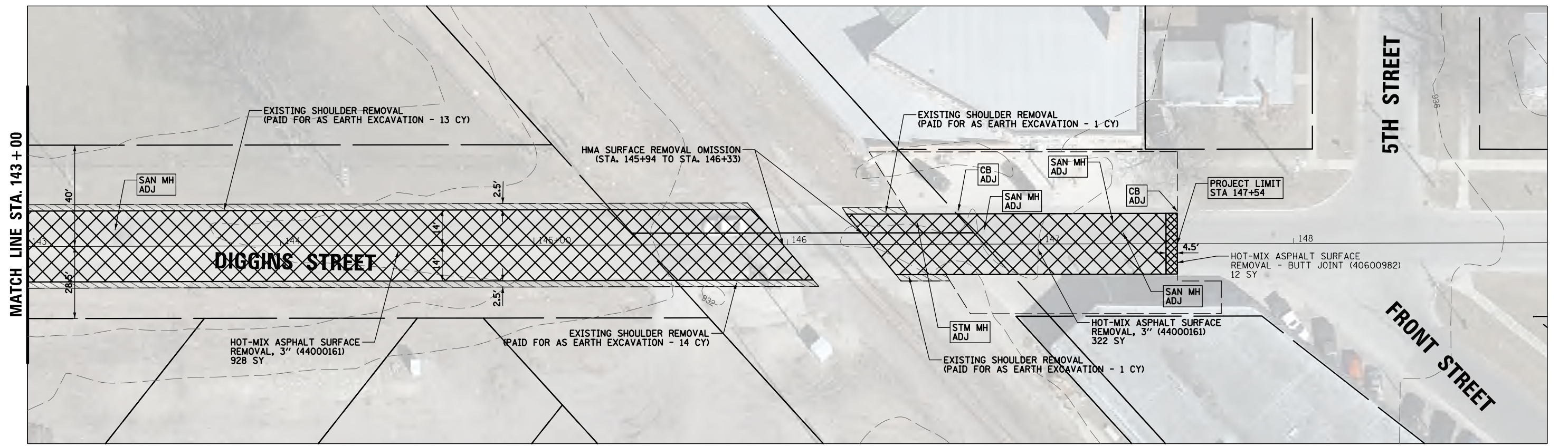
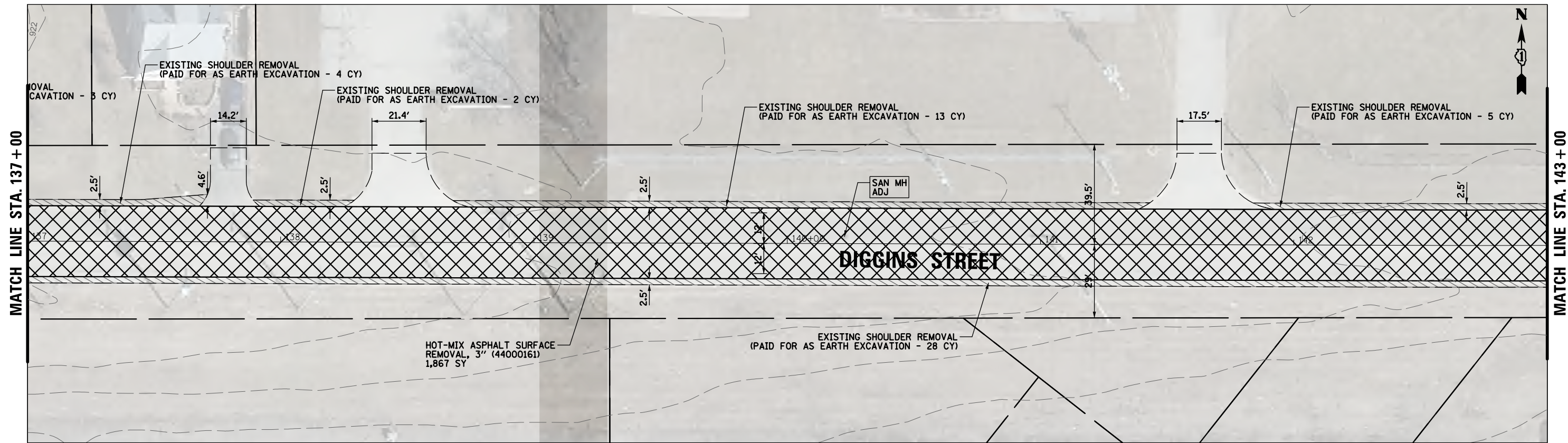
FILE NAME =	USER NAME = pmagnelli	DESIGNED - GR	REVISED -
N:\HARVARD\110001.00075\Civ11\REM3.110001.00075.DGN		DRAWN - PM	REVISED -
Default	PLOT SCALE = 48'	CHECKED - GR	REVISED -
	PLOT DATE = 12/15/2023	DATE -	REVISED -

**STATE OF ILLINOIS
DEPARTMENT OF TRANSPORTATION**

**DIGGINS STREET RESURFACING
EXISTING CONDITIONS & REMOVAL PLANS**

SCALE: 40' SHEET 3 OF 4 SHEETS STA. 125+00 TO STA. 137+00

F.A.U. RTE.	SECTION	COUNTY	TOTAL SHEETS	SHEET NO.
0002	21-00068-00-RS	MCHENRY	21	9
CONTRACT NO. 61K14				
ILLINOIS FED. AID PROJECT				



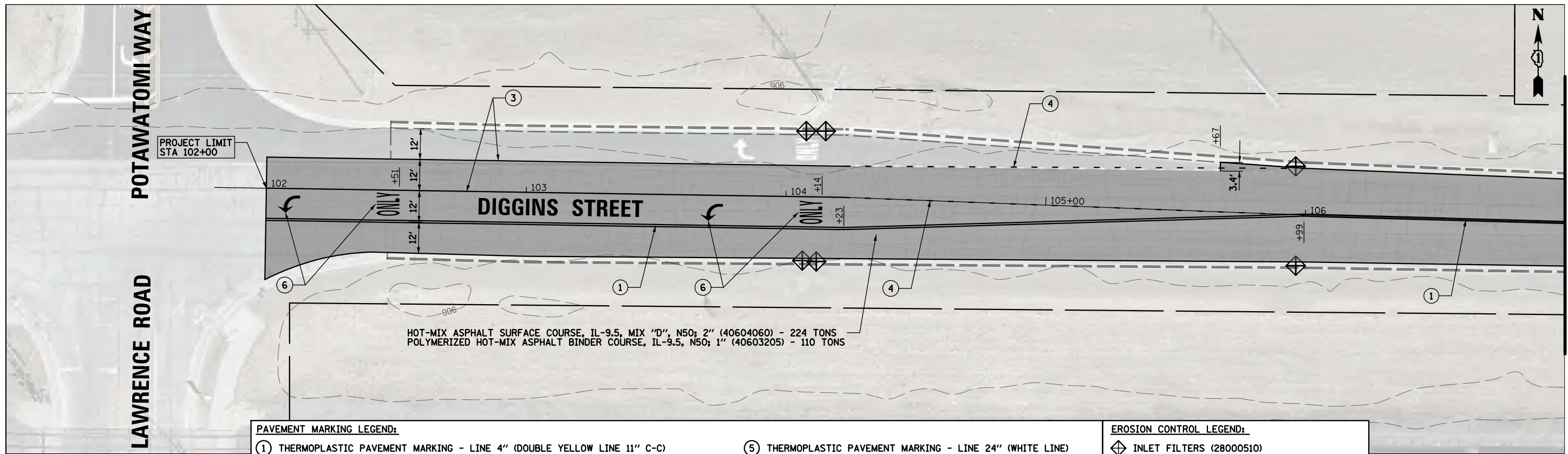
FILE NAME =	USER NAME = pmagnelli	DESIGNED - GR	REVISED -
N:\HARVARD\110001.00075\Civ11\REM4.110001.00075.DGN		DRAWN - PM	REVISED -
Default	PLOT SCALE = 48"	CHECKED - GR	REVISED -
	PLOT DATE = 12/15/2023	DATE -	REVISED -

**STATE OF ILLINOIS
DEPARTMENT OF TRANSPORTATION**

**DIGGINS STREET RESURFACING
EXISTING CONDITIONS & REMOVAL PLANS**

SCALE: 40' SHEET 4 OF 4 SHEETS STA. 137+00 TO STA. 147+54

F.A.U. RTE.	SECTION	COUNTY	TOTAL SHEETS	SHEET NO.
0002	21-00068-00-RS	MCHENRY	21	10
CONTRACT NO. 61K14				
ILLINOIS FED. AID PROJECT				



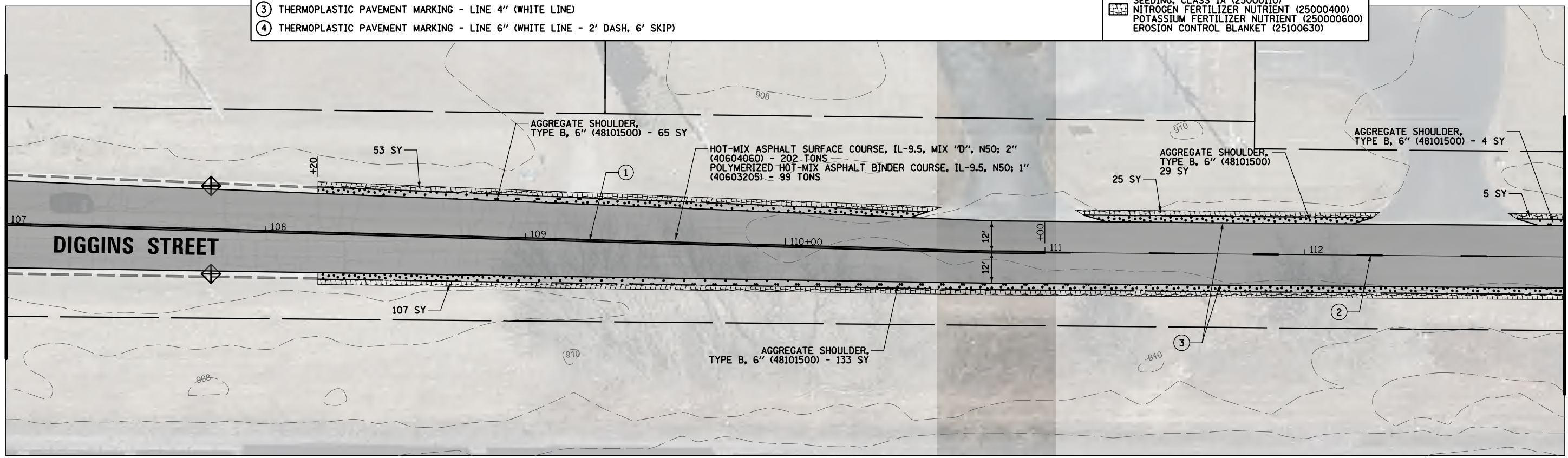
HOT-MIX ASPHALT SURFACE COURSE, IL-9.5, MIX "D", N50; 2" (40604060) - 224 TONS
 POLYMERIZED HOT-MIX ASPHALT BINDER COURSE, IL-9.5, N50; 1" (40603205) - 110 TONS

PAVEMENT MARKING LEGEND:

- ① THERMOPLASTIC PAVEMENT MARKING - LINE 4" (DOUBLE YELLOW LINE 11" C-C)
- ② THERMOPLASTIC PAVEMENT MARKING - LINE 4" (YELLOW LINE - 10' DASH, 30' SKIP)
- ③ THERMOPLASTIC PAVEMENT MARKING - LINE 4" (WHITE LINE)
- ④ THERMOPLASTIC PAVEMENT MARKING - LINE 6" (WHITE LINE - 2' DASH, 6' SKIP)
- ⑤ THERMOPLASTIC PAVEMENT MARKING - LINE 24" (WHITE LINE)
- ⑥ THERMOPLASTIC PAVEMENT MARKING - LETTERS AND SYMBOLS

EROSION CONTROL LEGEND:

- ◊ INLET FILTERS (28000510)
- ▨ TOPSOIL FURNISH AND PLACE, 4" (21101615)
- SEEDING, CLASS 1A (25000110)
- NITROGEN FERTILIZER NUTRIENT (25000400)
- POTASSIUM FERTILIZER NUTRIENT (250000600)
- EROSION CONTROL BLANKET (25100630)



AGGREGATE SHOULDER, TYPE B, 6" (48101500) - 65 SY

HOT-MIX ASPHALT SURFACE COURSE, IL-9.5, MIX "D", N50; 2" (40604060) - 202 TONS
 POLYMERIZED HOT-MIX ASPHALT BINDER COURSE, IL-9.5, N50; 1" (40603205) - 99 TONS

AGGREGATE SHOULDER, TYPE B, 6" (48101500) - 29 SY

AGGREGATE SHOULDER, TYPE B, 6" (48101500) - 4 SY

AGGREGATE SHOULDER, TYPE B, 6" (48101500) - 133 SY

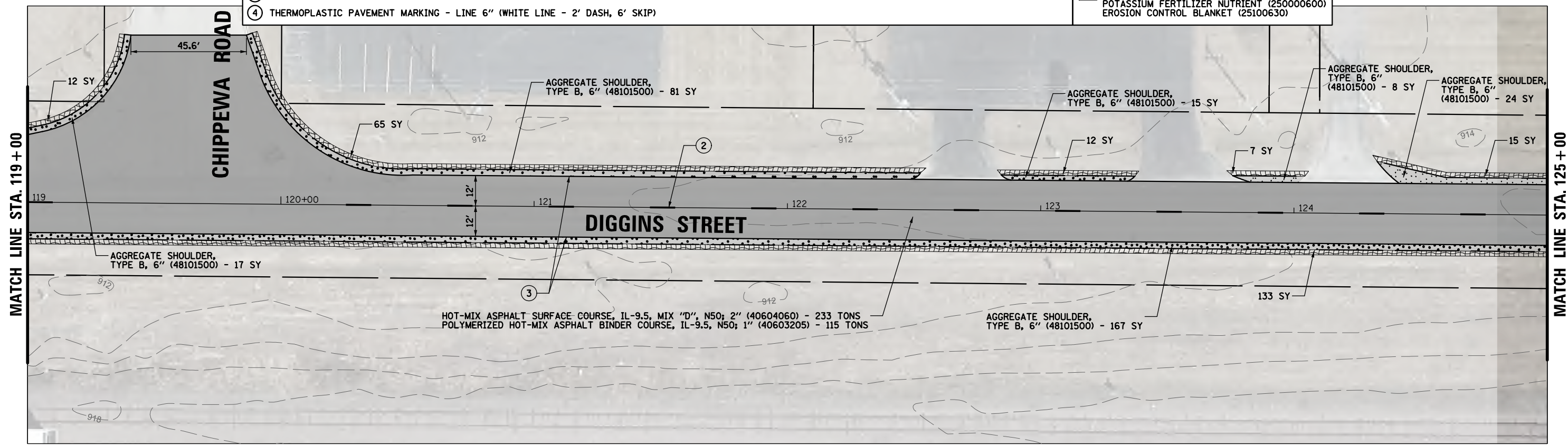
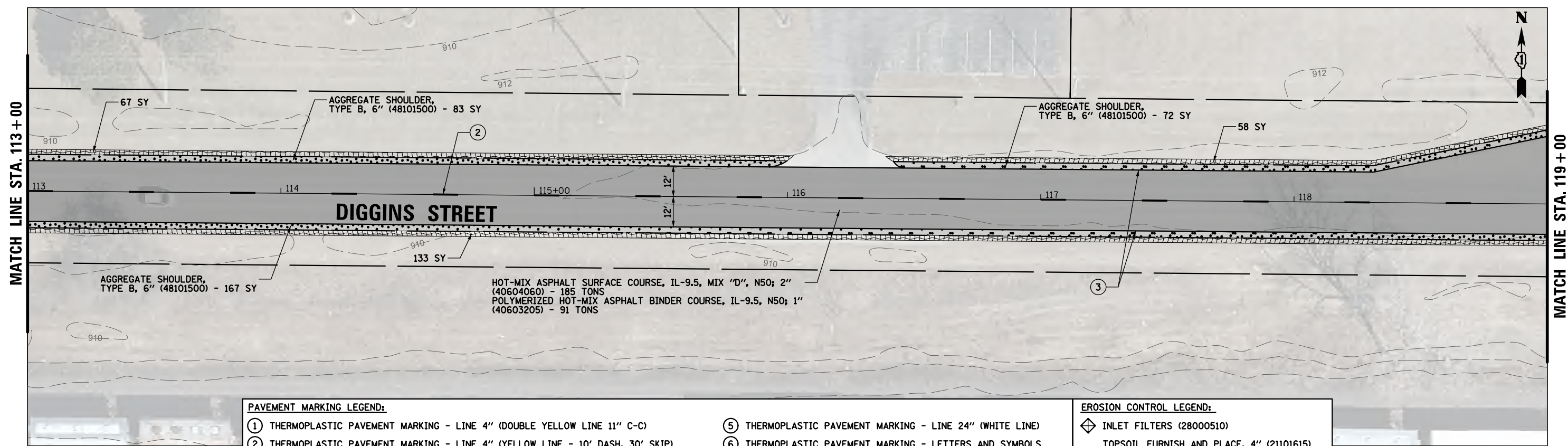
FILE NAME =	USER NAME = pmagnelli	DESIGNED - GR	REVISED -
N:\HARVARD\110001.00075\Civil\PLN\110001.00075.DGN		DRAWN - PM	REVISED -
Default	PLOT SCALE = 48"	CHECKED - GR	REVISED -
	PLOT DATE = 12/15/2023	DATE -	REVISED -

**STATE OF ILLINOIS
 DEPARTMENT OF TRANSPORTATION**

**DIGGINS STREET RESURFACING
 PROPOSED ROADWAY, PAVEMENT MARKING, & EROSION CONTROL PLANS**

SCALE: 40' SHEET 1 OF 4 SHEETS STA. 102+00 TO STA. 113+00

F.A.U. RTE.	SECTION	COUNTY	TOTAL SHEETS	SHEET NO.
0002	21-00068-00-RS	MCHENRY	21	11
				CONTRACT NO. 61K14
ILLINOIS FED. AID PROJECT				



PAVEMENT MARKING LEGEND:		EROSION CONTROL LEGEND:	
①	THERMOPLASTIC PAVEMENT MARKING - LINE 4" (DOUBLE YELLOW LINE 11" C-C)	⬠	INLET FILTERS (28000510)
②	THERMOPLASTIC PAVEMENT MARKING - LINE 4" (YELLOW LINE - 10' DASH, 30' SKIP)	⬠	TOPSOIL FURNISH AND PLACE, 4" (21101615)
③	THERMOPLASTIC PAVEMENT MARKING - LINE 4" (WHITE LINE)	⬠	SEEDING, CLASS 1A (25000110)
④	THERMOPLASTIC PAVEMENT MARKING - LINE 6" (WHITE LINE - 2' DASH, 6' SKIP)	⬠	NITROGEN FERTILIZER NUTRIENT (25000400)
⑤	THERMOPLASTIC PAVEMENT MARKING - LINE 24" (WHITE LINE)	⬠	POTASSIUM FERTILIZER NUTRIENT (25000600)
⑥	THERMOPLASTIC PAVEMENT MARKING - LETTERS AND SYMBOLS	⬠	EROSION CONTROL BLANKET (25100630)

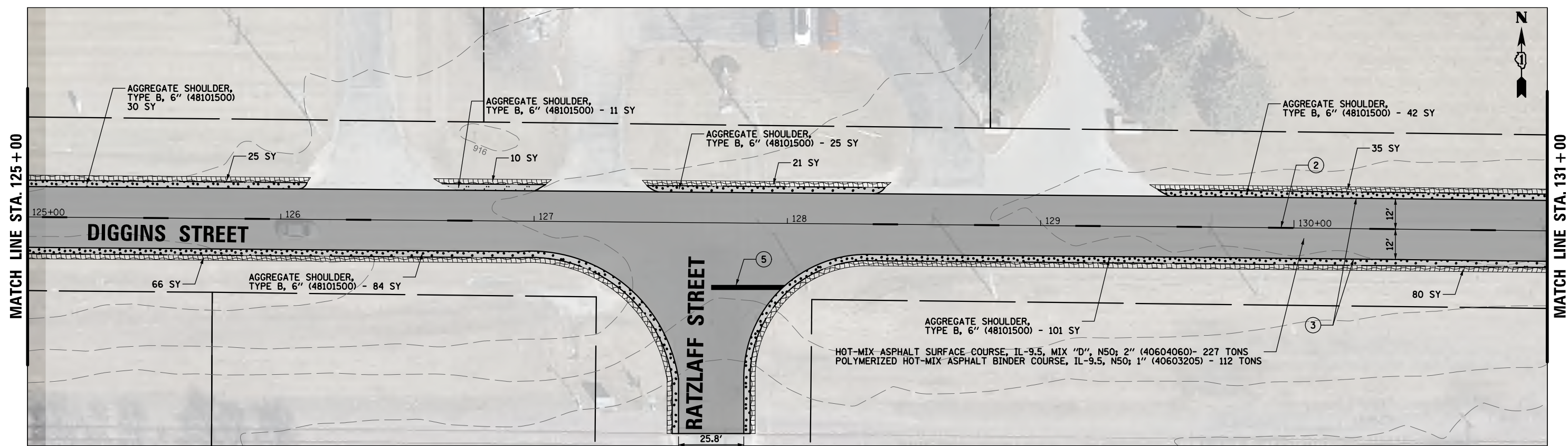
FILE NAME =	USER NAME = pmagnelli	DESIGNED - GR	REVISED -
N:\HARVARD\110001.00075\Civ11\PLN2.110001.00075.DGN		DRAWN - PM	REVISED -
Default	PLOT SCALE = 48"	CHECKED - GR	REVISED -
	PLOT DATE = 12/15/2023	DATE -	REVISED -

**STATE OF ILLINOIS
DEPARTMENT OF TRANSPORTATION**

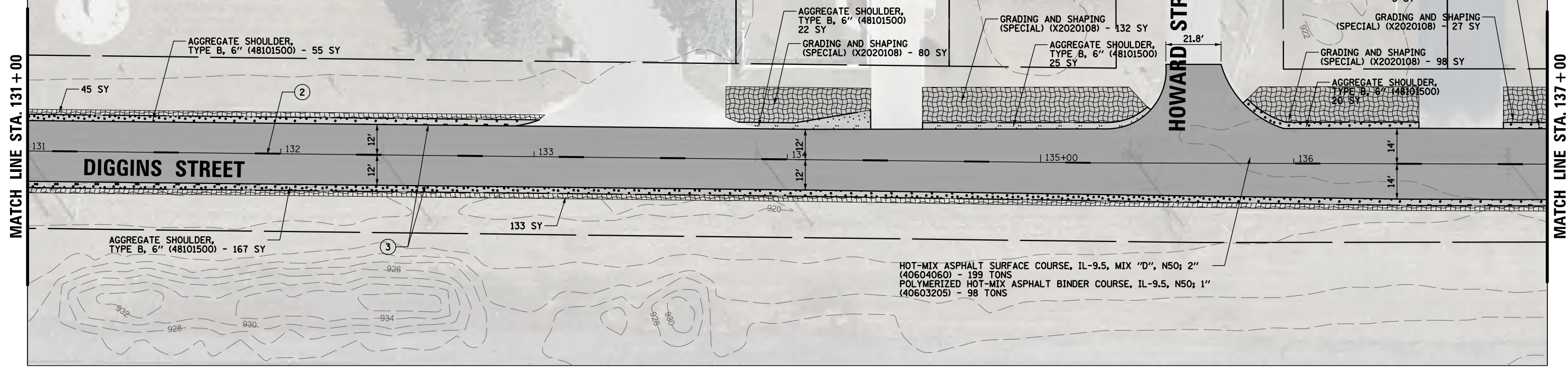
**DIGGINS STREET RESURFACING
PROPOSED ROADWAY, PAVEMENT MARKING, & EROSION CONTROL PLANS**

SCALE: 40' SHEET 2 OF 4 SHEETS STA. 113+00 TO STA. 125+00

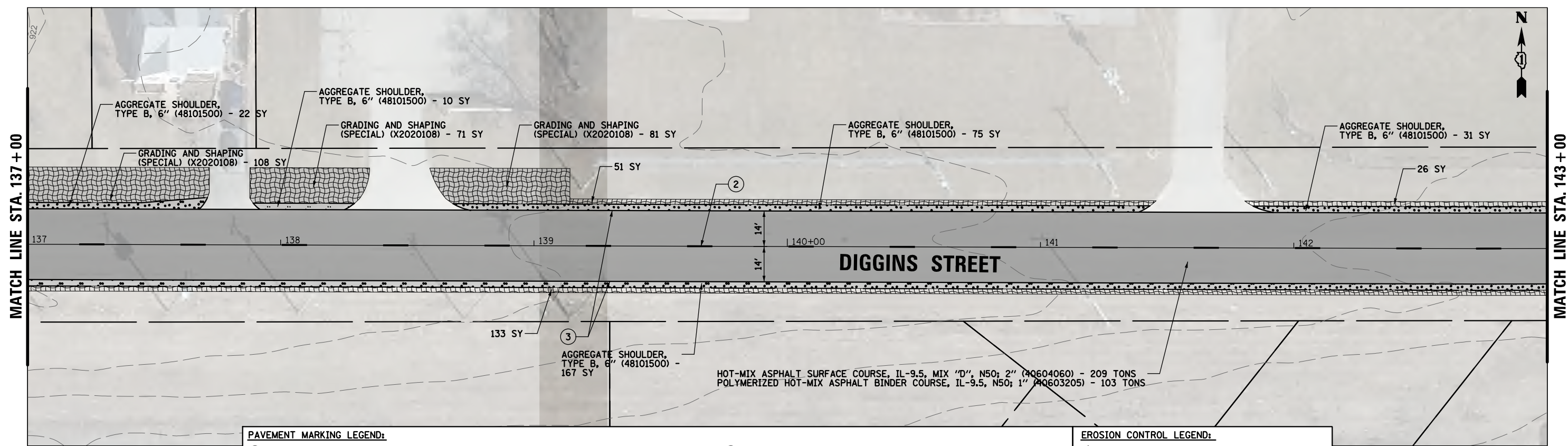
F.A.U. RTE.	SECTION	COUNTY	TOTAL SHEETS	SHEET NO.
0002	21-00068-00-RS	MCHENRY	21	12
				CONTRACT NO. 61K14
ILLINOIS FED. AID PROJECT				



PAVEMENT MARKING LEGEND:		EROSION CONTROL LEGEND:	
①	THERMOPLASTIC PAVEMENT MARKING - LINE 4" (DOUBLE YELLOW LINE 11" C-C)	⑤	THERMOPLASTIC PAVEMENT MARKING - LINE 24" (WHITE LINE)
②	THERMOPLASTIC PAVEMENT MARKING - LINE 4" (YELLOW LINE - 10' DASH, 30' SKIP)	⑥	THERMOPLASTIC PAVEMENT MARKING - LETTERS AND SYMBOLS
③	THERMOPLASTIC PAVEMENT MARKING - LINE 4" (WHITE LINE)	◆	INLET FILTERS (28000510)
④	THERMOPLASTIC PAVEMENT MARKING - LINE 6" (WHITE LINE - 2' DASH, 6' SKIP)	▨	TOPSOIL FURNISH AND PLACE, 4" (21101615)
		▨	SEEDING, CLASS 1A (25000110)
		▨	NITROGEN FERTILIZER NUTRIENT (25000400)
		▨	POTASSIUM FERTILIZER NUTRIENT (25000600)
		▨	EROSION CONTROL BLANKET (25100630)



FILE NAME =	USER NAME = pmagnelli	DESIGNED - GR	REVISED -	STATE OF ILLINOIS DEPARTMENT OF TRANSPORTATION	DIGGINS STREET RESURFACING PROPOSED ROADWAY, PAVEMENT MARKING, & EROSION CONTROL PLANS			F.A.U. RTE.	SECTION	COUNTY	TOTAL SHEETS	SHEET NO.
N:\HARVARD\110001.00075\Civil\PLN3.110001.00075.DGN		DRAWN - PM	REVISED -		SCALE: 40'	SHEET 3 OF 4 SHEETS	STA. 125+00 TO STA. 137+00	0002	21-00068-00-RS	MCHENRY	21	13
Default	PLOT SCALE = 48'	CHECKED - GR	REVISED -					CONTRACT NO. 61K14				
	PLOT DATE = 12/15/2023	DATE -	REVISED -					ILLINOIS FED. AID PROJECT				



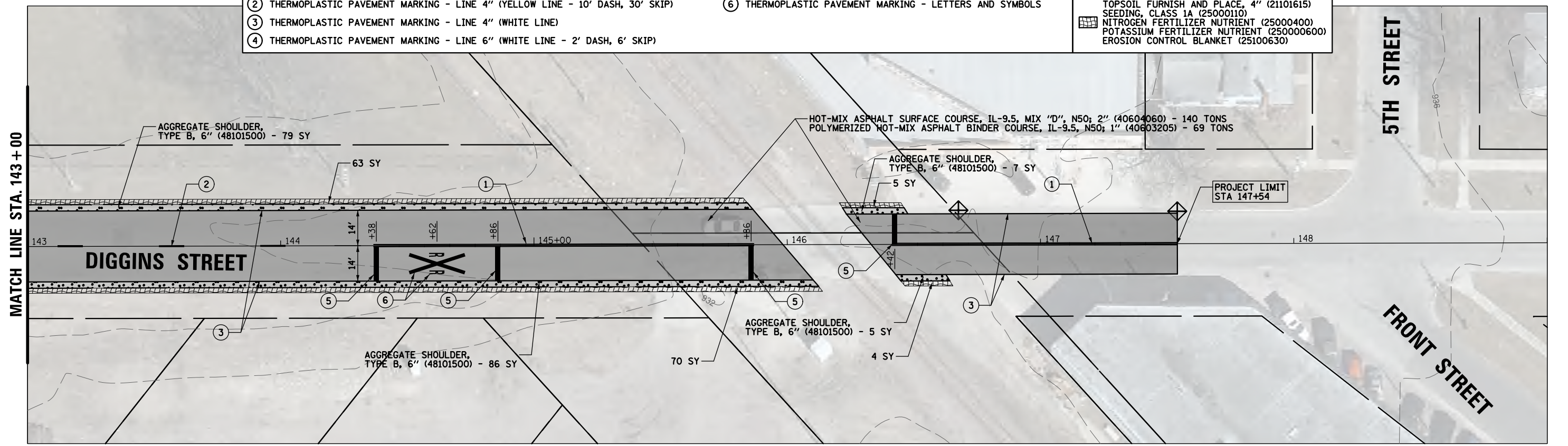
PAVEMENT MARKING LEGEND:

- ① THERMOPLASTIC PAVEMENT MARKING - LINE 4" (DOUBLE YELLOW LINE 11" C-C)
- ② THERMOPLASTIC PAVEMENT MARKING - LINE 4" (YELLOW LINE - 10' DASH, 30' SKIP)
- ③ THERMOPLASTIC PAVEMENT MARKING - LINE 4" (WHITE LINE)
- ④ THERMOPLASTIC PAVEMENT MARKING - LINE 6" (WHITE LINE - 2' DASH, 6' SKIP)

- ⑤ THERMOPLASTIC PAVEMENT MARKING - LINE 24" (WHITE LINE)
- ⑥ THERMOPLASTIC PAVEMENT MARKING - LETTERS AND SYMBOLS

EROSION CONTROL LEGEND:

- ◊ INLET FILTERS (28000510)
- TOPSOIL FURNISH AND PLACE, 4" (21101615)
- SEEDING, CLASS 1A (25000110)
- NITROGEN FERTILIZER NUTRIENT (25000400)
- POTASSIUM FERTILIZER NUTRIENT (250000600)
- EROSION CONTROL BLANKET (25100630)



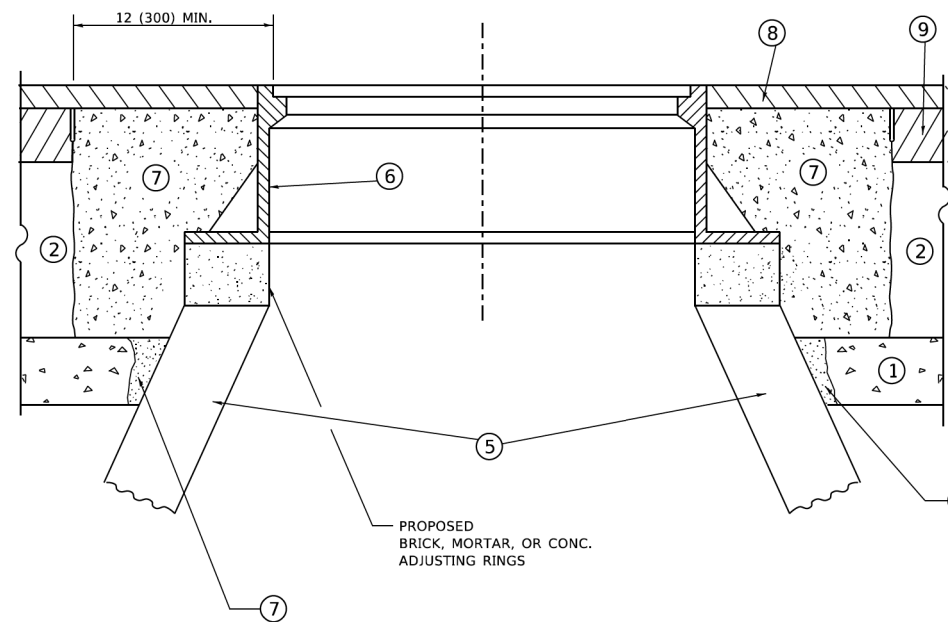
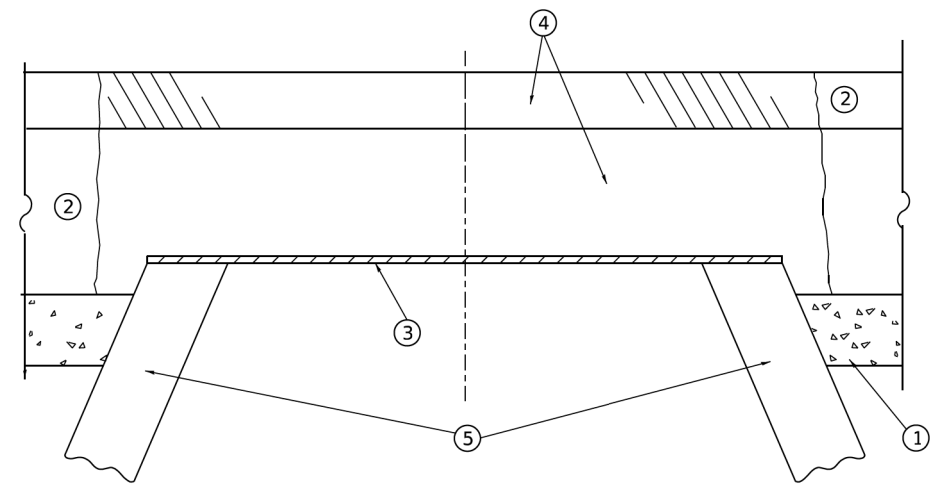
FILE NAME =	USER NAME = pmagnelli	DESIGNED - GR	REVISED -
N:\HARVARD\110001.00075\Civi1\PLN4.110001.00075.DGN		DRAWN - PM	REVISED -
Default	PLOT SCALE = 48"	CHECKED - GR	REVISED -
	PLOT DATE = 12/15/2023	DATE -	REVISED -

**STATE OF ILLINOIS
DEPARTMENT OF TRANSPORTATION**

**DIGGINS STREET RESURFACING
PROPOSED ROADWAY, PAVEMENT MARKING, & EROSION CONTROL PLANS**

SCALE: 40' SHEET 4 OF 4 SHEETS STA. 137+00 TO STA. 147+54

F.A.U. RTE.	SECTION	COUNTY	TOTAL SHEETS	SHEET NO.
0002	21-00068-00-RS	MCHENRY	21	14
				CONTRACT NO. 61K14
ILLINOIS FED. AID PROJECT				



**DETAILS FOR FRAMES AND LIDS ADJUSTMENT
WITH MILLING**

NOTES

1. EXISTING BROKEN FRAMES AND LIDS SHALL BE REMOVED AND DISPOSED OF BY THE CONTRACTOR AND SHALL BE REPLACED AS DIRECTED BY THE ENGINEER. REPLACEMENT FRAMES AND LIDS WILL BE PAID FOR IN ACCORDANCE WITH ARTICLE 109.04 OF THE STANDARD SPECIFICATIONS UNLESS A SEPARATE PAY ITEM HAS BEEN PROVIDED.
2. IF THE EXISTING LIDS ARE OPEN, THE FRAME WILL BE ADJUSTED TO THE ELEVATION OF THE MILLED PAVEMENT SURFACE PRIOR TO THE MILLING OPERATION. THE FRAME WILL NOT BE REMOVED AND COVERED BY THE METAL PLATE.
3. CITY OF CHICAGO CASTINGS ARE THE PROPERTY OF THE CITY AND THE CONTRACTOR SHALL NOTIFY THE CITY FOR REMOVAL AND DISPOSITION OF THE CASTINGS.
4. THE METAL PLATE USED TO COVER THE STRUCTURE SHALL REMAIN THE PROPERTY OF THE CONTRACTOR.
5. THE CONTRACTOR SHALL REMOVE ALL TRAFFIC CONTROL DEVICES BY THE END OF EACH WORK SHIFT.

CONSTRUCTION PROCEDURES

STAGE 1 (BEFORE PAVEMENT MILLING)

- A) REMOVE A MINIMUM OF 12 (300) OF THE PAVEMENT FROM AROUND THE STRUCTURE.
- B) REMOVE THE EXISTING FRAME AND LID FROM THE STRUCTURE.
- C) COVER THE STRUCTURE OPENING WITH A 36 (900) DIAMETER METAL PLATE.
- D) BACKFILL WITH CRUSHED STONE AND HMA SURFACE MIX APPROVED BY THE ENGINEER. (MIN. 3 (80) HMA TO REMAIN AFTER MILLING).

STAGE 2 (AFTER PAVEMENT MILLING)

- A) REMOVE THE HMA SURFACE MIX AND CRUSHED STONE.
- B) INSTALL THE FRAME AND LID; ADJUST THE FRAME TO ITS FINAL SURFACE ELEVATION.
- C) THE SURROUNDING SPACE SHALL BE FILLED WITH CLASS PP-2* CONCRETE TO THE ELEVATION OF THE SURFACE OF THE EXISTING BASE COURSE OR THE BINDER COURSE.

* UNLESS OTHERWISE SPECIFIED IN THE PLANS.

THE PROCEDURE EXPLAINED ABOVE SHALL CONFORM TO THE APPLICABLE PORTIONS OF SECTIONS 353, 406, 602, AND 603 OF THE STANDARD SPECIFICATIONS EXCEPT THAT "THE CONTRACTOR SHALL ADJUST THE STRUCTURES TO THE FINISHED PAVEMENT ELEVATION NO MORE THAN 5 CALENDAR DAYS PRIOR TO PLACEMENT OF THE FINAL LIFT OF SURFACE UNLESS APPROVED BY THE ENGINEER."

LEGEND

- | | |
|--|-------------------------------|
| ① SUB-BASE GRANULAR MATERIAL | ⑥ FRAME AND LID (SEE NOTES) |
| ② EXISTING PAVEMENT | ⑦ CLASS PP-2* CONCRETE |
| ③ 36 (900) DIAMETER METAL PLATE | ⑧ PROPOSED HMA SURFACE COURSE |
| ④ PROPOSED CRUSHED STONE AND HMA SURFACE MIX | ⑨ PROPOSED HMA BINDER COURSE |
| ⑤ EXISTING STRUCTURE | |

LOCATION OF STRUCTURES

THE CONTRACTOR WILL BE REQUIRED TO KEEP A RECORD OF THE LOCATIONS OF THE BURIED STRUCTURES ACCORDING TO THE STATION AND DISTANCE LEFT OR RIGHT OF THE CENTERLINE OF PAVEMENT. UPON COMPLETION OF THE WORK, THE CONTRACTOR WILL DELIVER THE RECORD TO THE ENGINEER.

BASIS OF PAYMENT

1. REMOVING FRAMES AND LIDS ON DRAINAGE AND UTILITY STRUCTURES IN THE PAVEMENT PRIOR TO MILLING, AND ADJUSTING TO FINAL GRADE PRIOR TO PLACING THE SURFACE COURSE, WILL BE PAID FOR AT THE CONTRACT UNIT PRICE EACH FOR "FRAMES AND LIDS TO BE ADJUSTED (SPECIAL)."
2. THIS WORK WILL NOT BE PAID FOR WHEN DRAINAGE AND UTILITY STRUCTURES ARE SPECIFIED FOR PAYMENT AS STRUCTURE RECONSTRUCTION.
3. NEW FRAMES AND LIDS, WHEN SPECIFIED, WILL BE PAID FOR SEPARATELY.
4. WHEN STRUCTURES ARE TO BE ADJUSTED OR RECONSTRUCTED, THE LOWERING AND RAISING OF THE FRAMES AND LIDS WILL NOT BE PAID FOR SEPARATELY BUT WILL BE INCLUDED IN THE COST OF THE CORRESPONDING PAY ITEM.

ALL DIMENSIONS ARE IN INCHES (MILLIMETERS) UNLESS OTHERWISE SHOWN

MODEL: Default
FILE: \\manila\project\22341\bd08.dgn

USER NAME = Lawrence,DeManche	DESIGNED - R. SHAH	REVISED - R. BORO 03-09-11
	DRAWN -	REVISED - R. BORO 12-06-11
PLOT SCALE = 100.0000' / in.	CHECKED -	REVISED - K. SMITH 11-18-22
PLOT DATE = 9/15/2023	DATE - 10-25-94	REVISED - K. SMITH 09-15-23

**STATE OF ILLINOIS
DEPARTMENT OF TRANSPORTATION**

**DETAILS FOR
FRAMES AND LIDS ADJUSTMENT WITH MILLING**

SCALE: NONE SHEET 1 OF 1 SHEETS STA. TO STA.

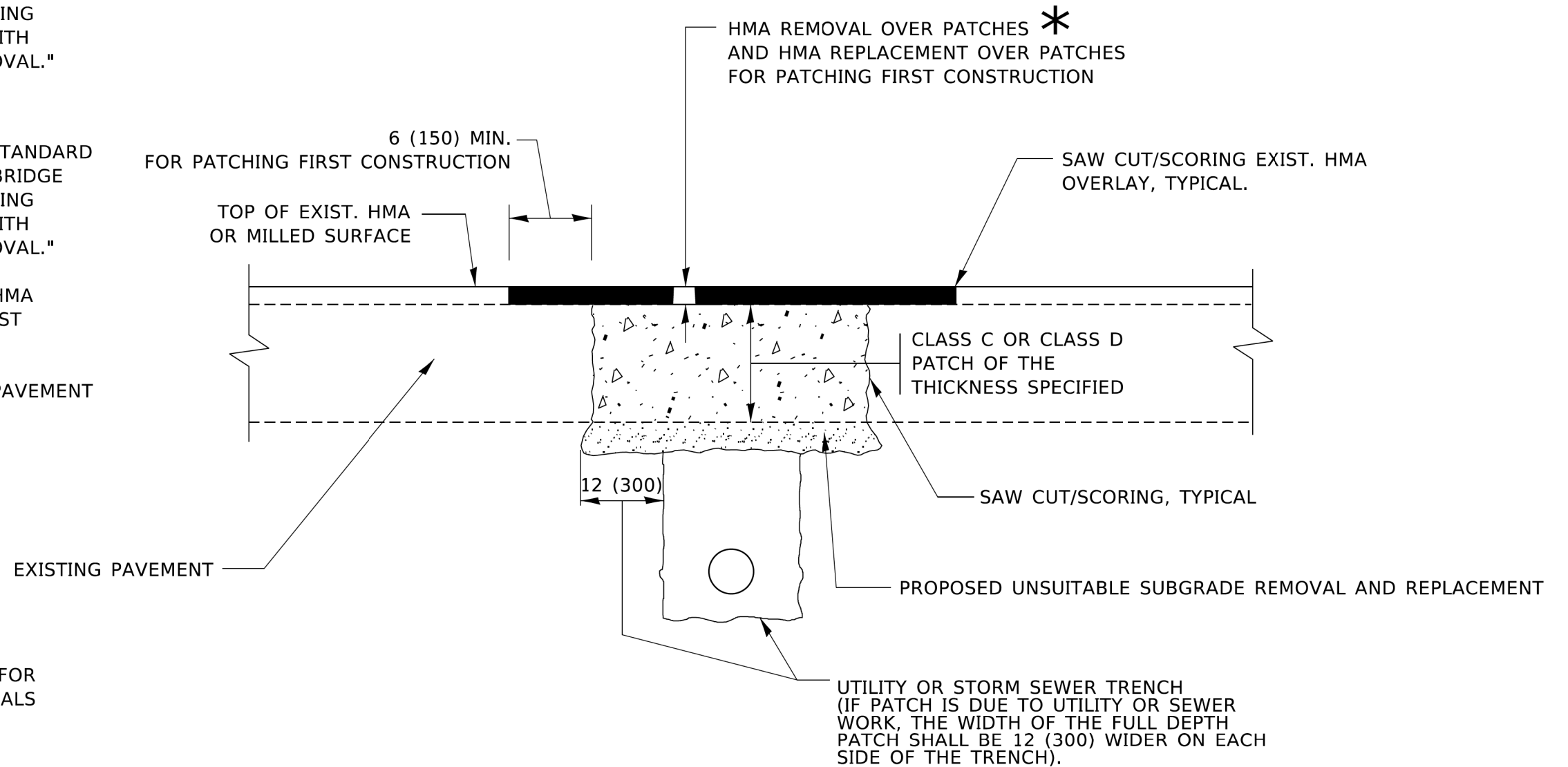
F.A.U. RTE.	SECTION	COUNTY	TOTAL SHEETS	SHEET NO.
0002	21-00068-00-RS	MCHENRY	21	15
BD600-03 (BD-08)			CONTRACT NO. 61K14	
ILLINOIS FED. AID PROJECT				

METHOD OF MEASUREMENT

REFER TO SECTION 442 OF THE STANDARD SPECIFICATIONS FOR ROAD AND BRIDGE CONSTRUCTION AND THE RECURRING SPECIAL PROVISION "PATCHING WITH HOT-MIX ASPHALT OVERLAY REMOVAL."

BASIS OF PAYMENT

1. REFER TO SECTION 442 OF THE STANDARD SPECIFICATIONS FOR ROAD AND BRIDGE CONSTRUCTION AND THE RECURRING SPECIAL PROVISION "PATCHING WITH HOT-MIX ASPHALT OVERLAY REMOVAL."
2. SAW CUT/SCORING OF EXISTING HMA OVERLAY IS INCLUDED IN THE COST OF PAVEMENT PATCHING.
3. SAW CUT/SCORING OF EXISTING PAVEMENT IS INCLUDED IN THE COST OF PAVEMENT PATCHING.



* SEE TYPICAL SECTIONS FOR THICKNESS AND MATERIALS

SEQUENCE OF CONSTRUCTION (PATCHING FIRST)

1. REMOVE THE EXISTING HMA MATERIAL OVER THE AREA TO BE PATCHED.
2. REMOVE AND REPLACE WITH CLASS C OR D PATCH.
3. REPLACE HMA MATERIAL OVER THE AREA TO BE PATCHED.

SEQUENCE OF CONSTRUCTION (MILLING FIRST)

1. MILL HMA FIRST IF THERE IS AT LEAST 4½ INCHES OR MORE OF HMA MATERIAL ON TOP OF THE EXISTING PAVEMENT OR IF THE PAVEMENT IS FULL DEPTH HMA. A MINIMUM OF 2 INCHES OF HMA MATERIAL SHALL BE IN PLACE AFTER MILLING.
2. REMOVE AND REPLACE WITH FULL DEPTH CLASS D PATCHES TO TOP OF MILLED SURFACE.

ALL DIMENSIONS ARE IN INCHES (MILLIMETERS) UNLESS OTHERWISE SHOWN.

MODEL: Default
FILE: \\bentley.com\pwwd\dot\documents\dot\office\shah\1\project\shah\21-00068\00-rs\sheet\1622.dgn

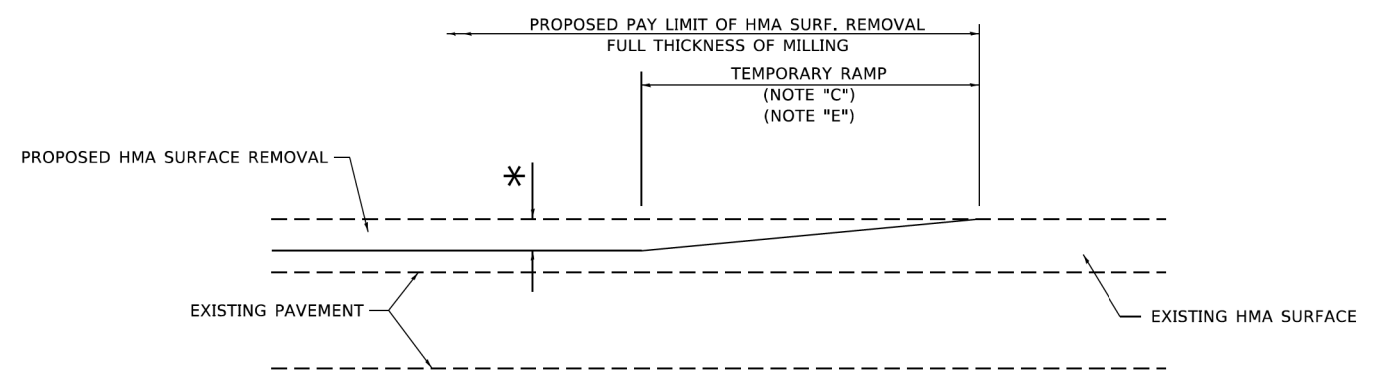
USER NAME = Lawrence,DeManche	DESIGNED - R. SHAH	REVISED - R. BORO 01-01-07
	DRAWN -	REVISED - R. BORO 09-04-07
PLOT SCALE = 100.0000' / in.	CHECKED -	REVISED - K. ENG 10-27-08
PLOT DATE = 11/18/2022	DATE - 10-25-94	REVISED - K. SMITH 11-18-22

STATE OF ILLINOIS
DEPARTMENT OF TRANSPORTATION

PAVEMENT PATCHING FOR
HMA SURFACED PAVEMENT

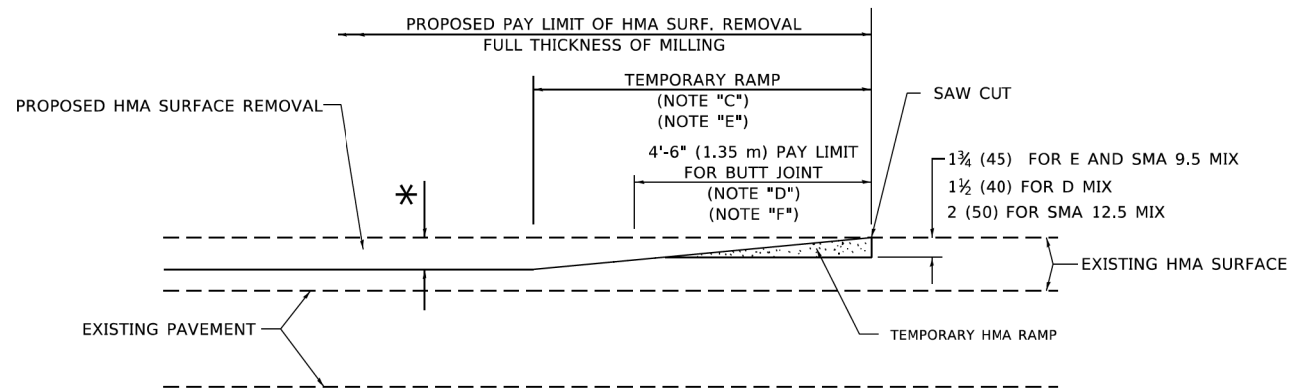
SCALE: NONE SHEET 1 OF 1 SHEETS STA. TO STA.

F.A.U. RTE.	SECTION	COUNTY	TOTAL SHEETS	SHEET NO.
0002	21-00068-00-RS	MCHENRY	21	16
BD400-04 (BD-22)			CONTRACT NO. 61K14	
ILLINOIS FED. AID PROJECT				



MILLED TEMPORARY RAMP
(FOR BUTT JOINT AND HMA TAPER SEE DETAIL BELOW)

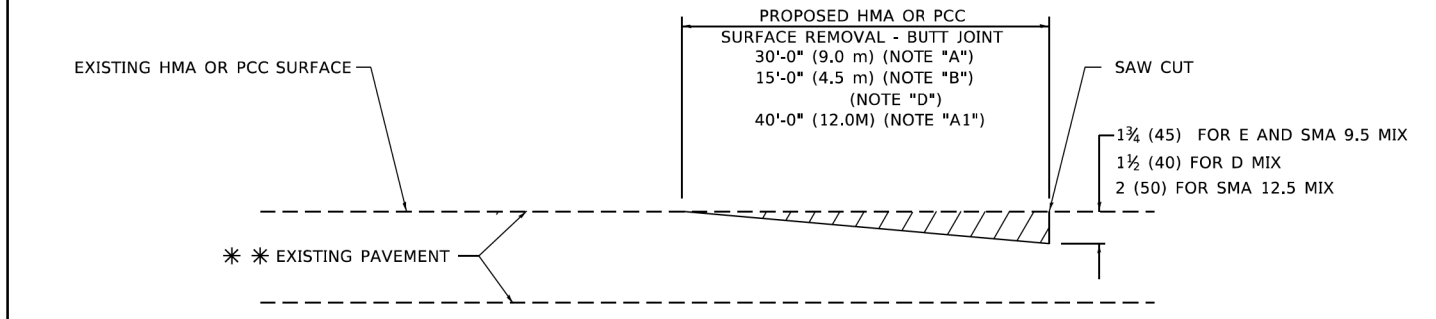
OPTION 1



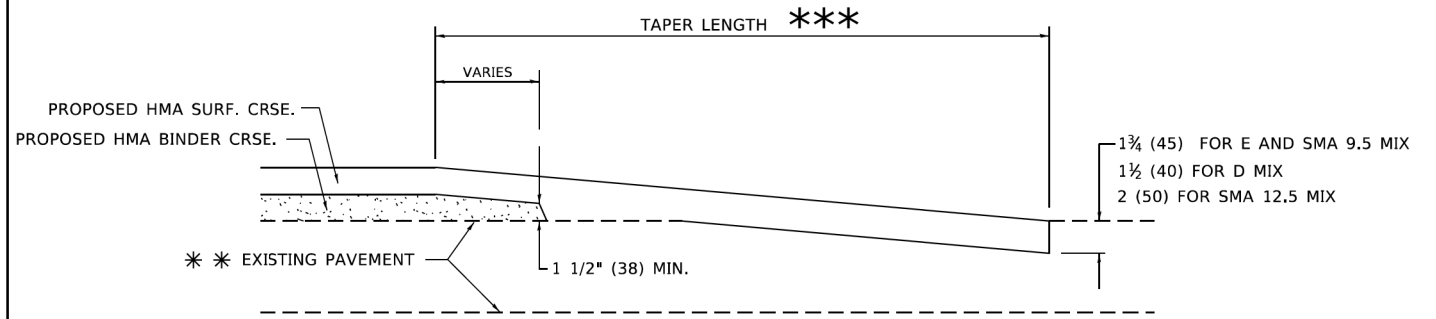
HMA CONSTRUCTED TEMPORARY RAMP
(FOR BUTT JOINT AND HMA TAPER SEE DETAIL BELOW)

OPTION 2

TYPICAL TEMPORARY RAMP



BUTT JOINT DETAIL



HMA TAPER DETAIL

TYPICAL BUTT JOINT AND HMA TAPER FOR RESURFACING ONLY

*** PC CONCRETE, HMA OR HMA RESURFACED PAVEMENT.

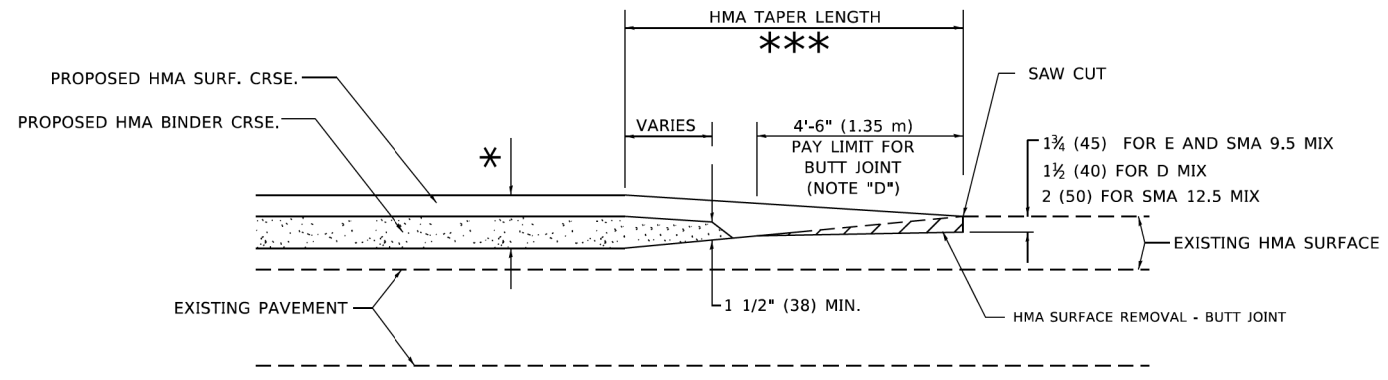
GENERAL NOTES

- A. MAINLINE ARTERIAL ROADWAYS AND MAJOR SIDE ROADS.
- A1. INTERSTATES
- B. MINOR SIDE ROADS.
- C. THE TEMP. RAMP SHALL BE CONSTRUCTED IMMEDIATELY UPON REMOVAL OF THE EXISTING HMA SURFACE.
- D. THE BUTT JOINT SHALL BE CONSTRUCTED IMMEDIATELY PRIOR TO PLACING THE PROPOSED HMA COURSES.
- E. TAPER THE TEMP. RAMP AT A RATE OF 3' - 4" (1.02m) PER 1 INCH (25 mm) OF MILLING THICKNESS.
* SEE TYPICAL SECTIONS FOR MILLING THICKNESS.
- F. SEE ARTICLE 406.08 AND 406.14 OF THE STANDARD SPECIFICATIONS FOR "HMA AND/OR PCC SURFACE REMOVAL, BUTT JOINT".
- *** 20'-0" (6.1 m) PER 1 (25) RESURFACING (NOTE "A")
10'-0" (3.0 m) PER 1 (25) RESURFACING (NOTE "B")

BASIS OF PAYMENT

- 1. THE BUTT JOINT WILL BE PAID FOR AT THE CONTRACT UNIT PRICE PER SQUARE YARD (SQUARE METER) FOR "HOT-MIX ASPHALT SURFACE REMOVAL - BUTT JOINT" OR FOR "PORTLAND CEMENT CONCRETE SURFACE REMOVAL- BUTT JOINT".
- 2. THE TEMPORARY RAMP AND SAW CUT SHALL BE INCLUDED IN THE UNIT COST FOR HMA OR PCC SURFACE REMOVAL-BUTT JOINT.

ALL DIMENSIONS ARE IN INCHES (MILLIMETERS) UNLESS OTHERWISE SHOWN.



BUTT JOINT AND HMA TAPER

TYPICAL BUTT JOINT AND HMA TAPER FOR MILLING AND RESURFACING

MODEL: Default
FILE: \\p1d1c0w.bentley.com\PI\DOT\Documents\DOT_Offices\Bartlett_1\Projects\BIS\0213\ACAD\Drawings\Sheet\0213.dgn

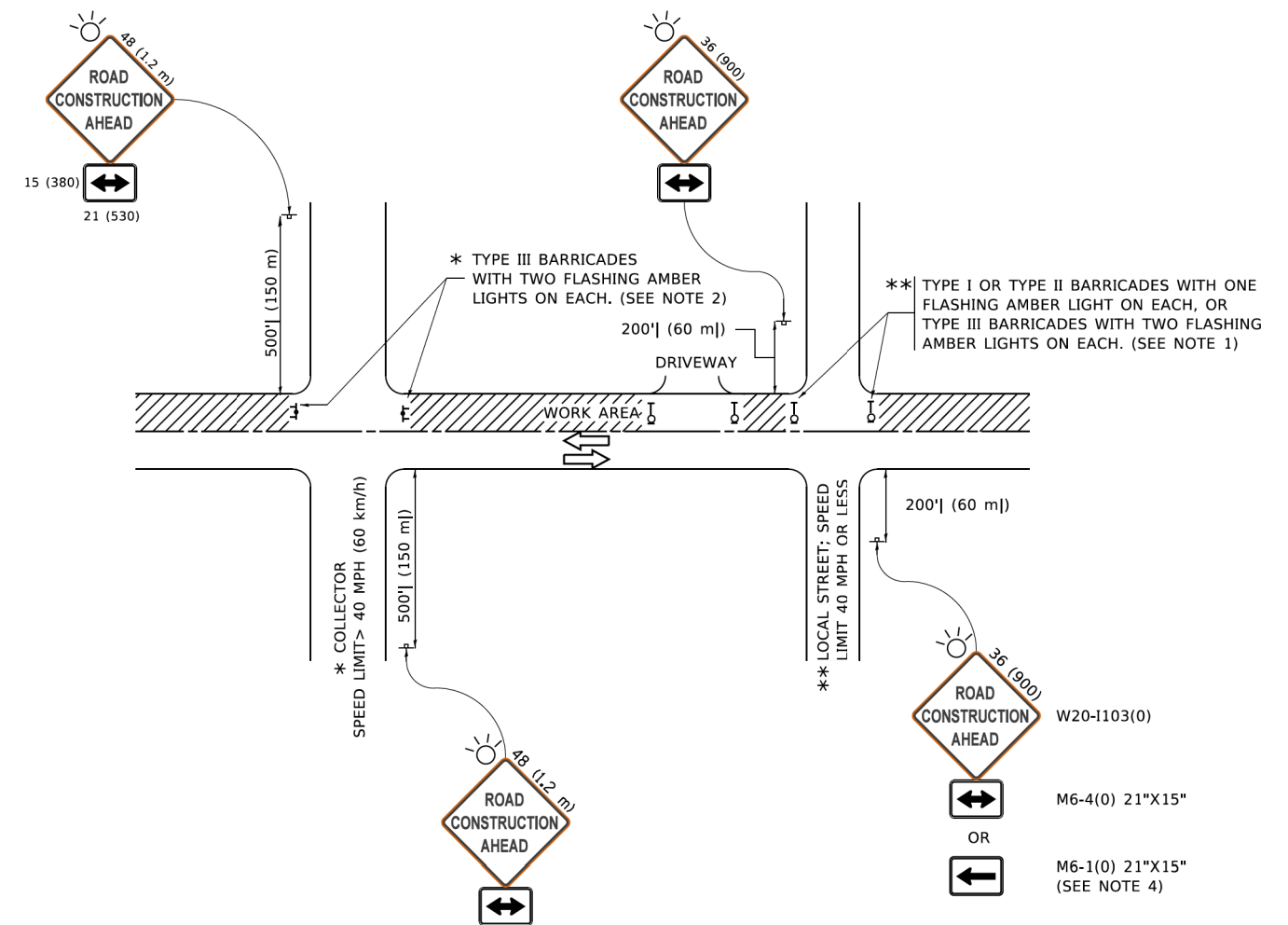
USER NAME = Lawrence,DeManche	DESIGNED - M. DE YONG	REVISED - A. ABBAS 03-21-97
	DRAWN -	REVISED - M. GOMEZ 04-06-01
PLOT SCALE = 100.0000' / in.	CHECKED -	REVISED - R. BORO 01-01-07
PLOT DATE = 11/18/2022	DATE - 06-13-90	REVISED - K. SMITH 11-18-22

**STATE OF ILLINOIS
DEPARTMENT OF TRANSPORTATION**

BUTT JOINT AND HMA TAPER DETAILS

SCALE: NONE SHEET 1 OF 1 SHEETS STA. TO STA.

F.A.U. RTE.	SECTION	COUNTY	TOTAL SHEETS	SHEET NO.
0002	21-00068-00-R5	MCHENRY	21	17
BD400-05 BD-32			CONTRACT NO. 61K14	
ILLINOIS FED. AID PROJECT				



NOTES:

1. SIDE ROAD WITH A SPEED LIMIT OF 40 MPH (60 km/h) OR LESS AS SHOWN ON THE DRAWING AND AS DIRECTED BY THE ENGINEER:
 - a) ONE "ROAD CONSTRUCTION AHEAD" SIGN 36 x 36 (900x900) WITH A FLASHER MOUNTED ON IT APPROXIMATELY 200' (60 m) IN ADVANCE OF THE MAIN ROUTE.
 - b) THE CLOSED PORTION OF THE MAIN ROUTE SHALL BE PROTECTED BY BLOCKING WITH TYPE I, TYPE II OR TYPE III BARRICADES, 1/3 OF THE CROSS SECTION OF THE CLOSED PORTION.
2. SIDE ROAD WITH A SPEED LIMIT GREATER THAN 40 MPH (60 km/h) AS SHOWN ON THE DRAWING AND AS DIRECTED BY THE ENGINEER:
 - a) ONE "ROAD CONSTRUCTION AHEAD" SIGN 48 x 48 (1.2 m x 1.2 m) WITH A FLASHER MOUNTED ON IT APPROXIMATELY 500' (150 m) IN ADVANCE OF THE MAIN ROUTE.
 - b) BLOCKING WITH TYPE III BARRICADES, 1/2 OF THE CROSS SECTION OF THE CLOSED PORTION.
3. CONES MAY BE SUBSTITUTED FOR BARRICADES OR DRUMS AT HALF THE SPACING DURING DAY OPERATIONS. CONES SHALL BE A MINIMUM OF 28 (710) IN HEIGHT.
4. SIGNING AND THE WORK ZONE, A SINGLE HEADED ARROW (M6-1) SHALL BE USED IN LIEU OF THE DOUBLE HEADED ARROW (M6-4).
5. WHEN WORK IS BEING PERFORMED ON A SIDE ROAD OR DRIVEWAY, FOLLOW THE APPLICABLE STANDARD(S). THE DIRECTIONAL ARROW (M6-1 OR M6-4) SHALL BE COVERED OR REMOVED WHEN NO LONGER CONSISTENT WITH THE TRAFFIC CONTROL SET-UP.
6. ADVANCE WARNING SIGNS ARE TO BE OMITTED ON DRIVEWAYS UNLESS OTHERWISE SPECIFIED IN THE PLANS OR BY THE ENGINEER.
7. THE TRAFFIC CONTROL AND PROTECTION FOR SIDE ROADS, INTERSECTIONS, AND DRIVEWAYS SHALL BE INCLUDED IN THE COST OF SPECIFIED TRAFFIC CONTROL STANDARDS OR ITEMS.

All dimensions are in inches (millimeters) unless otherwise shown.

MODEL: Default; FILE NAME: P:\110848\BID\NTEG\Illinois.gov\PIV\DOT\Documents\DOT Office\Drawings\Projects\21-00068-00-RS\21-00068-00-RS\CADD\Drawings\CAD\Sheet\TC10.dwg

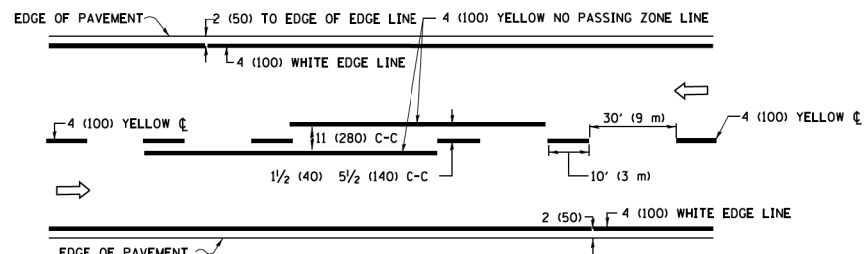
USER NAME = footemj	DESIGNED - L.H.A.	REVISED - A. HOUSEH 10-15-96
	DRAWN -	REVISED - T. RAMMACHER 01-06-00
PLOT SCALE = 50.0000' / in.	CHECKED -	REVISED - A. SCHUETZE 07-01-13
PLOT DATE = 3/4/2019	DATE - 06-89	REVISED - A. SCHUETZE 09-15-16

**STATE OF ILLINOIS
DEPARTMENT OF TRANSPORTATION**

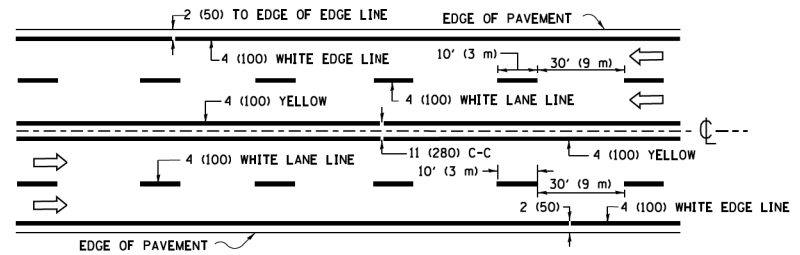
**TRAFFIC CONTROL AND PROTECTION FOR
SIDE ROADS, INTERSECTIONS, AND DRIVEWAYS**

SCALE: NONE SHEET 1 OF 1 SHEETS STA. TO STA.

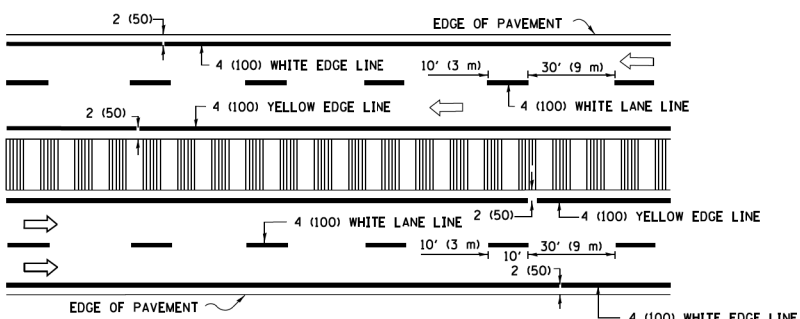
F.A.U. RTE.	SECTION	COUNTY	TOTAL SHEETS	SHEET NO.
0002	21-00068-00-RS	MCHENRY	21	18
TC-10			CONTRACT NO. 61K14	
ILLINOIS FED. AID PROJECT				



2-LANE ROADWAY

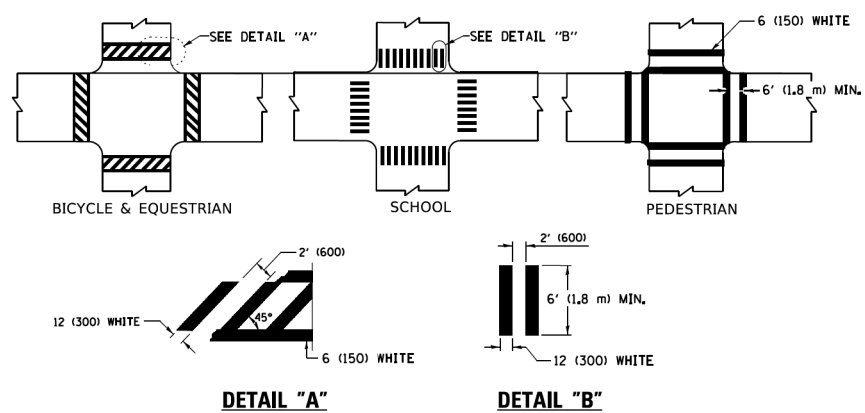


MULTI-LANE UNDIVIDED



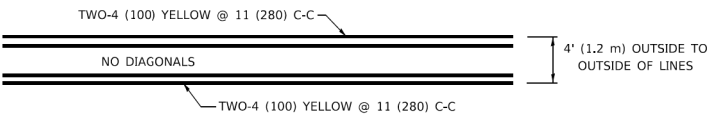
MULTI-LANE DIVIDED WITH MEDIAN

TYPICAL LANE AND EDGE LINE MARKING

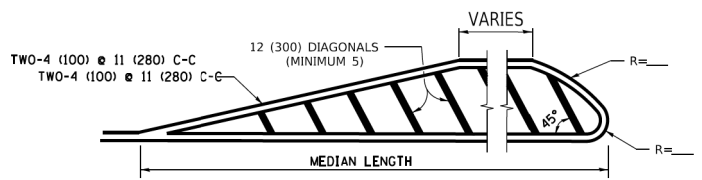


TYPICAL CROSSWALK MARKING

* MARKINGS SHALL BE INSTALLED PARALLEL TO THE CENTERLINE OF THE ROAD WHICH IT CROSSES



4' (1.2 m) WIDE MEDIANS ONLY

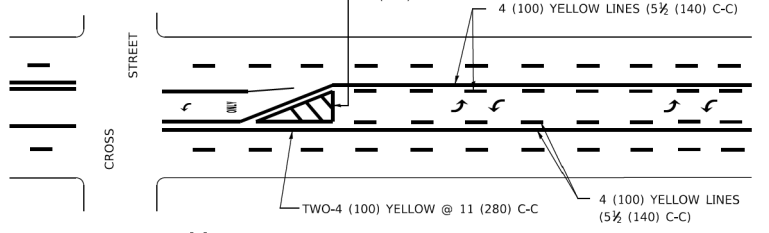


MEDIANS OVER 4' (1.2 m) WIDE

FOR MEDIAN LENGTHS WHERE DIAGONAL SPACING CANNOT BE ATTAINED, USE 5 (FIVE) EQUALLY SPACED DIAGONAL LINES.

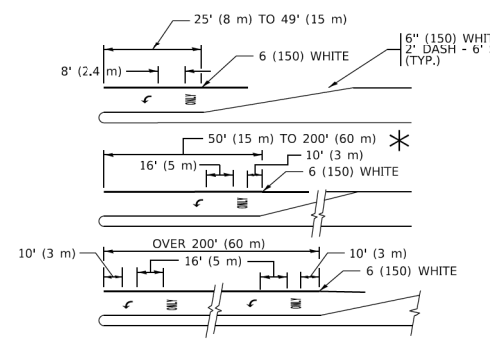
DIAGONAL LINE SPACING: 50' (15 m) C-C (LESS THAN 30MPH (50 km/h))
75' (25 m) C-C 30MPH (50 km/h) TO 45MPH (70 km/h)
150' (45 m) C-C (MORE THAN 45MPH (70 km/h))

TYPICAL PAINTED MEDIAN MARKING



MEDIAN WITH TWO-WAY LEFT TURN LANE

TYPICAL PAINTED MEDIAN MARKING

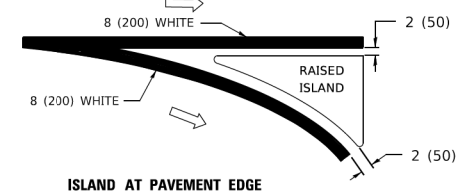
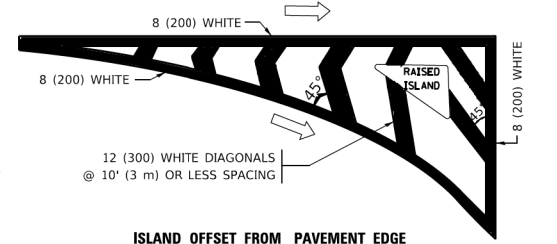


FULL SIZE LETTERS 8' (2.4 m) AND ARROWS SHALL BE USED.
AREA = 15.6 SQ. FT. (1.5 m²) ONLY AREA = 20.8 SQ. FT. (1.9 m²)

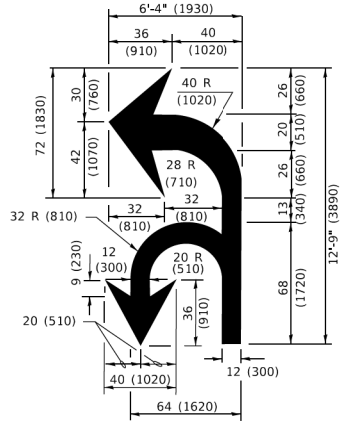
* TURN LANES IN EXCESS OF 400' (120 m) IN LENGTH MAY HAVE AN ADDITIONAL SET OF ARROW - "ONLY" INSTALLED MIDWAY BETWEEN THE OTHER TWO SETS OF ARROW - "ONLY".

TYPICAL LEFT (OR RIGHT) TURN LANE

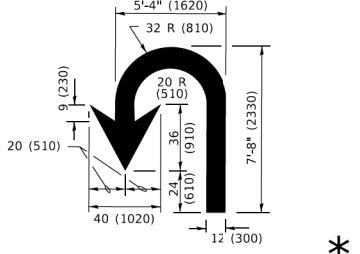
TYPICAL TURN LANE MARKING



TYPICAL ISLAND MARKING



COMBINATION LEFT AND U-TURN



U-TURN

LANE REDUCTION TRANSITION

* LANE REDUCTION ARROWS REQUIRED AT SPEEDS OF 45 MPH OR GREATER OR WHEN SPECIFIED IN PLANS.

D(FT)	SPEED LIMIT
345	30
425	35
500	40
580	45
665	50
750	55

TYPE OF MARKING	WIDTH OF LINE	PATTERN	COLOR	SPACING / REMARKS
CENTERLINE ON 2 LANE PAVEMENT	4 (100)	SKIP-DASH	YELLOW	10' (3 m) LINE WITH 30' (9 m) SPACE
CENTERLINE ON MULTI-LANE UNDIVIDED PAVEMENT	2 @ 4 (100)	SOLID	YELLOW	11 (280) C-C
NO PASSING ZONE LINES: FOR ONE DIRECTION FOR BOTH DIRECTIONS	4 (100) 2 @ 4 (100)	SOLID SOLID	YELLOW YELLOW	5 1/2 (140) C-C FROM SKIP-DASH CENTERLINE 11 (280) C-C OMIT SKIP-DASH CENTERLINE BETWEEN
LANE LINES	4 (100) 5 (125) ON FREEWAYS	SKIP-DASH SKIP-DASH	WHITE WHITE	10' (3 m) LINE WITH 30' (9 m) SPACE
DOTTED LINES (EXTENSIONS OF CENTER, LANE OR TURN LANE MARKINGS)	SAME AS LINE BEING EXTENDED	SKIP-DASH	SAME AS LINE BEING EXTENDED	2' (600) LINE WITH 6' (1.8 m) SPACE
EDGE LINES	4 (100)	SOLID	YELLOW-LEFT WHITE-RIGHT	OUTLINE MEDIANS IN YELLOW
TURN LANE MARKINGS	6 (150) LINE: FULL SIZE LETTERS & SYMBOLS (8' (2.4m))	SOLID	WHITE	SEE TYPICAL TURN LANE MARKING DETAIL
TWO WAY LEFT TURN MARKING	2 @ 4 (100) EACH DIRECTION 8' (2.4m) LEFT ARROW	SKIP-DASH AND SOLID IN PAIRS	YELLOW WHITE	10' (3 m) LINE WITH 30' (9 m) SPACE FOR SKIP-DASH; 5 1/2 (140) C-C BETWEEN SOLID LINE AND SKIP-DASH LINE SEE TYPICAL TWO-WAY LEFT TURN MARKING DETAIL
CROSSWALK LINES (PEDESTRIAN) A. DIAGONALS (BIKE & EQUESTRIAN) B. LONGITUDINAL BARS (SCHOOL)	2 @ 6 (150) 2' (600) APART 12 (300) @ 45° 12 (300) @ 90°	SOLID SOLID SOLID	WHITE WHITE WHITE	NOT LESS THAN 6' (1.8 m) APART 2' (600) APART SEE TYPICAL CROSSWALK MARKING DETAILS.
STOP LINES	24 (600)	SOLID	WHITE	PLACE 4' (1.2 m) IN ADVANCE OF AND PARALLEL TO CROSSWALK, IF PRESENT. OTHERWISE, PLACE AT DESIRED STOPPING POINT. PARALLEL TO CROSSROAD CENTERLINE, WHERE POSSIBLE
PAINTED MEDIANS	2 @ 4 (100) WITH 12 (300) DIAGONALS @ 45° NO DIAGONALS USED FOR 4' (1.2 m) WIDE MEDIANS	SOLID	YELLOW: TWO WAY TRAFFIC WHITE: ONE WAY TRAFFIC	11 (280) C-C FOR THE DOUBLE LINE SEE TYPICAL PAINTED MEDIAN MARKING.
GORE MARKING AND CHANNELIZING LINES	8 (200) WITH 12 (300) DIAGONALS @ 45°	SOLID	WHITE	DIAGONALS: 15' (4.5 m) C-C (LESS THAN 30MPH (50 km/h)) 20' (6 m) C-C 30MPH (50 km/h) TO 45MPH (70 km/h) 30' (9 m) C-C (OVER 45MPH (70 km/h))
RAILROAD CROSSING	24 (600) TRANSVERSE LINES: "RR" 15 6" (1.8 m) LETTERS; 16 (400) LINE FOR "X"	SOLID	WHITE	SEE STATE STANDARD 780001 AREA OF: "R"=3.6 SQ. FT. (0.33 m ²) EACH "X"=54.0 SQ. FT. (5.0 m ²)
SHOULDER DIAGONALS (REQUIRED FOR SHOULDERS > 8')	12 (300) @ 45°	SOLID	WHITE - RIGHT YELLOW - LEFT	50' (15 m) C-C (LESS THAN 30MPH (50 km/h)) 75' (25 m) C-C (30 MPH (50 km/h) TO 45MPH (70 km/h)) 150' (45 m) C-C (OVER 45MPH (70 km/h))
U TURN ARROW	SEE DETAIL	SOLID	WHITE	16.3 SF
2 ARROW COMBINATION LEFT AND U TURN	SEE DETAIL	SOLID	WHITE	30.4 SF

FOR FURTHER DETAILS ON PAVEMENT MARKING REFER TO STANDARD SPECIFICATIONS FOR ROAD AND BRIDGE CONSTRUCTION AND STATE STANDARD 780001.

All dimensions are in inches (millimeters) unless otherwise shown.

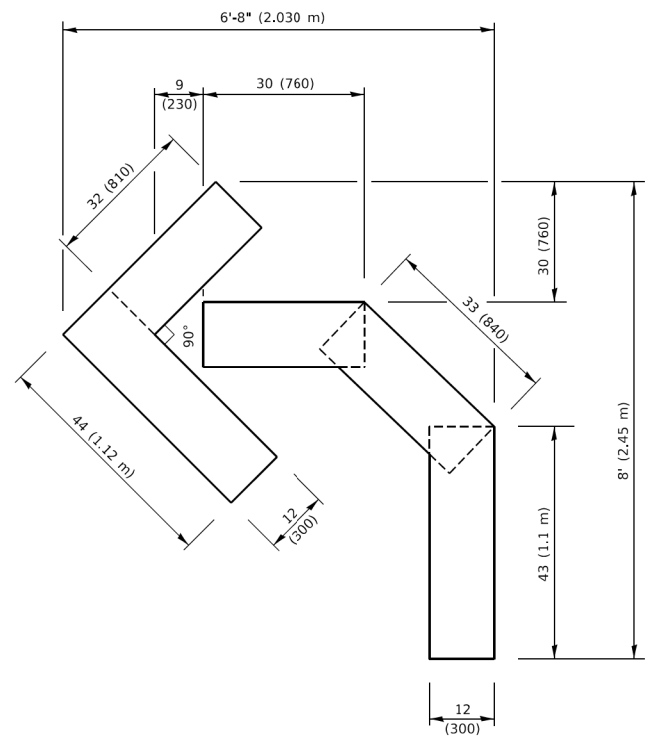
MODEL: Default FILE NAME: P:\110848\BID\ITEG\Illinois.gov\NWDOT\Documents\DOT Office\District 1\Projects\DH\S223-23\CADD\Drawings\TC13.dwg

USER NAME = footemj	DESIGNED - EVERS	REVISED - C. JUCIUS 09-09-09
PLOT SCALE = 50.0000" / in.	CHECKED -	REVISED - C. JUCIUS 07-01-13
PLOT DATE = 3/4/2019	DATE - 03-19-90	REVISED - C. JUCIUS 12-21-15
		REVISED - C. JUCIUS 04-12-16

**STATE OF ILLINOIS
DEPARTMENT OF TRANSPORTATION**

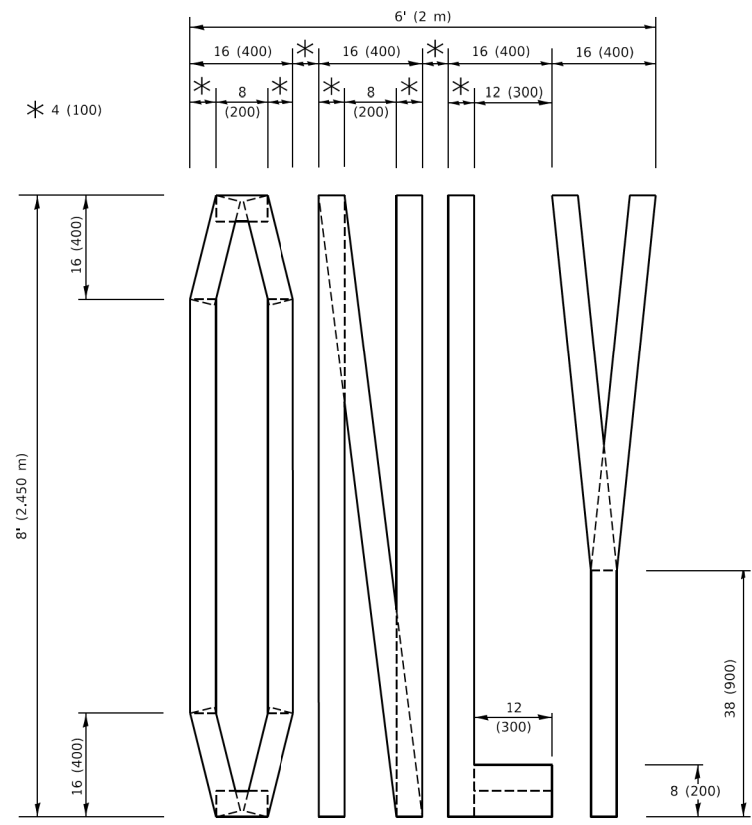
DISTRICT ONE	
TYPICAL PAVEMENT MARKINGS	
SCALE: NONE	SHEET 1 OF 2 SHEETS STA. TO STA.

F.A.U. RTE.	SECTION	COUNTY	TOTAL SHEETS	SHEET NO.
0002	21-00068-00-RS	MCHENRY	21	19
TC-13		CONTRACT NO. 61K14		
ILLINOIS		FED. AID PROJECT		



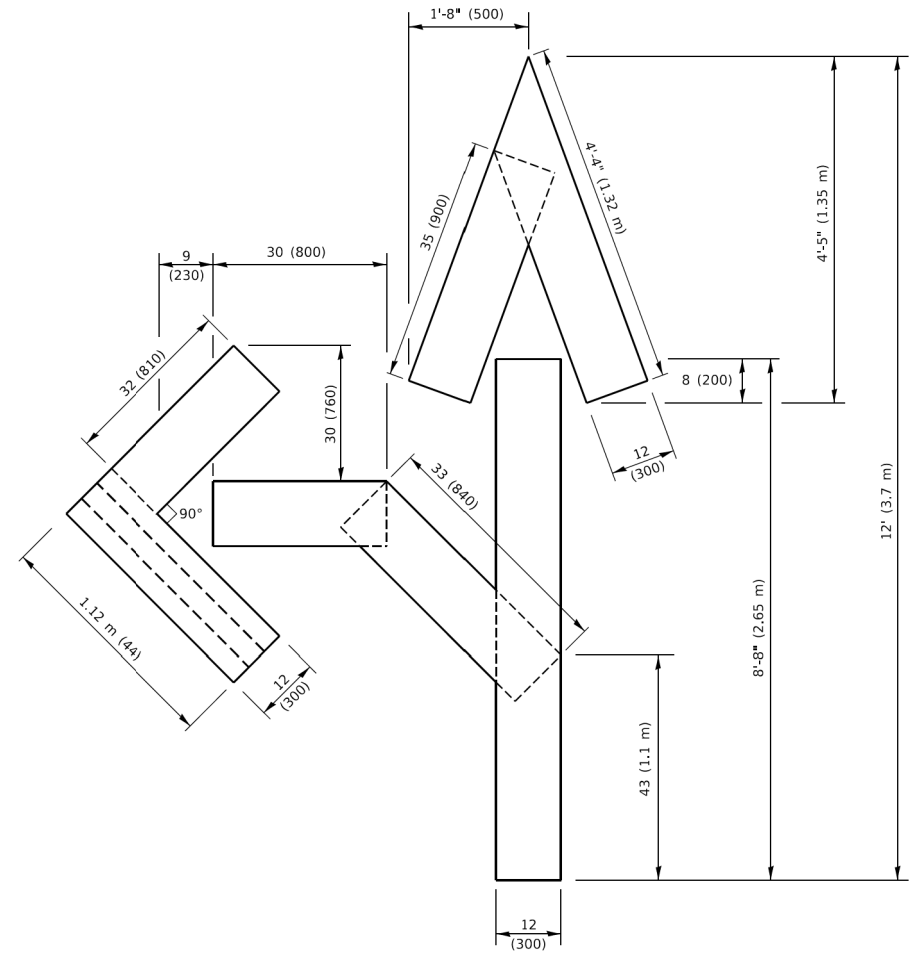
QUANTITY

4 (100) LINE = 45.5 ft. (13.9 m)
15.2 sq. ft. (1.41 sq. m)



QUANTITY

4 (100) LINE = 64.1 ft. (19.5 m)
21.4 sq. ft. (1.99 sq. m)

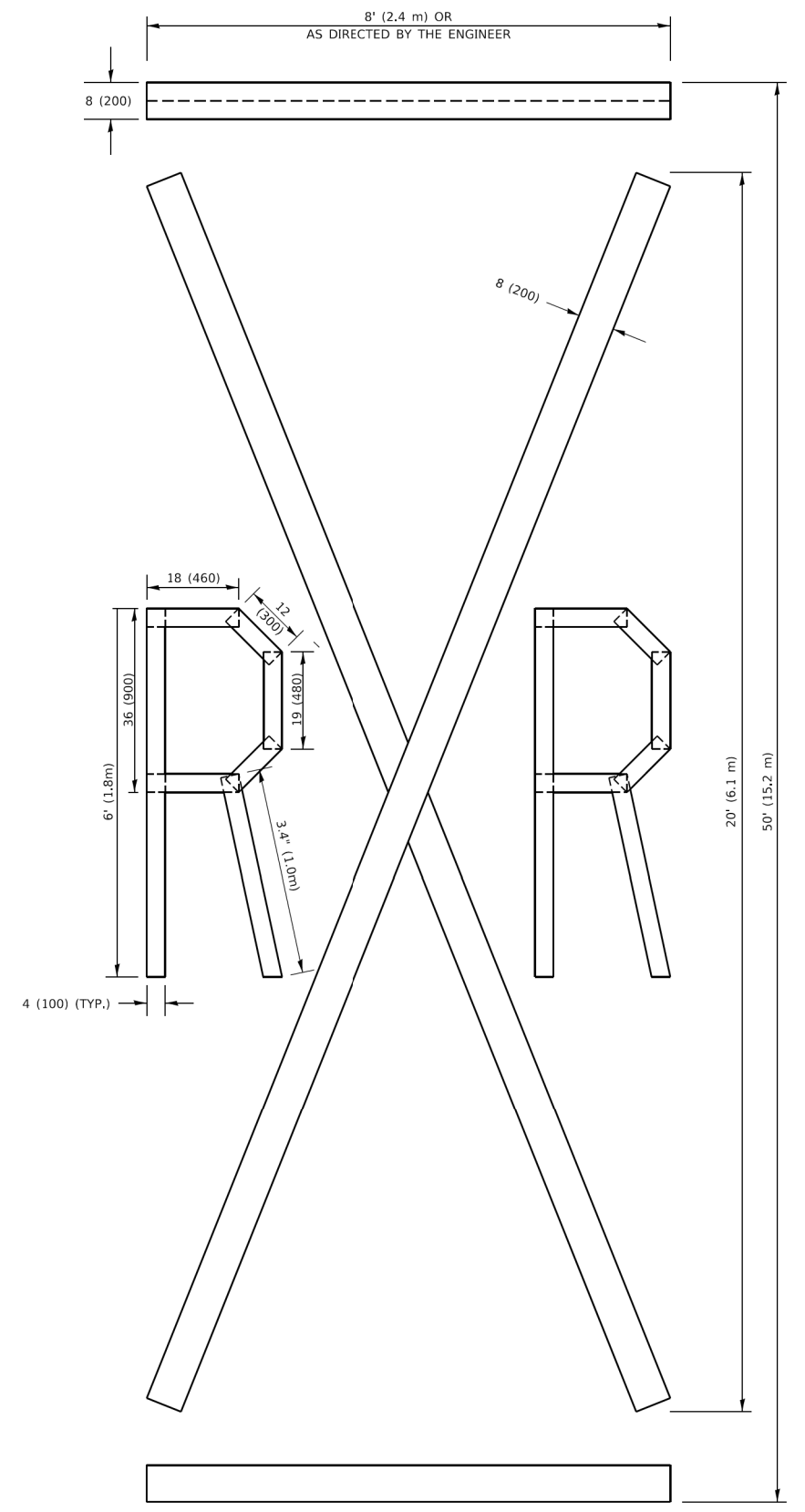


QUANTITY

4 (100) LINE = 82.5 ft. (25.1 m)
27.5 sq. ft. (2.53 sq. m)

NOTE:

ALL QUANTITIES OF PLACEMENT ARE REPRESENTED IN LINEAR FEET OF 4" LINES TO MATCH THE 4" TEMPORARY TAPE PAY ITEM AND REPRESENTS THE TOTAL QUANTITY OF 4" TAPE REQUIRED.



QUANTITY

4 (100) LINE = 225.9 ft. (68.9 m)
75.3 sq. ft. (6.99 sq. m)

All dimensions are in inches (millimeters) unless otherwise shown.

MODEL: Default
FILE: \\miller\p\1108\FEB\INTEG\Illinois.gov\PIV\DOT\Documents\1\DOT Office\Bartlett 1\Projects\018\5422\24\CADD\DATA\CAD\sheet112.dgn

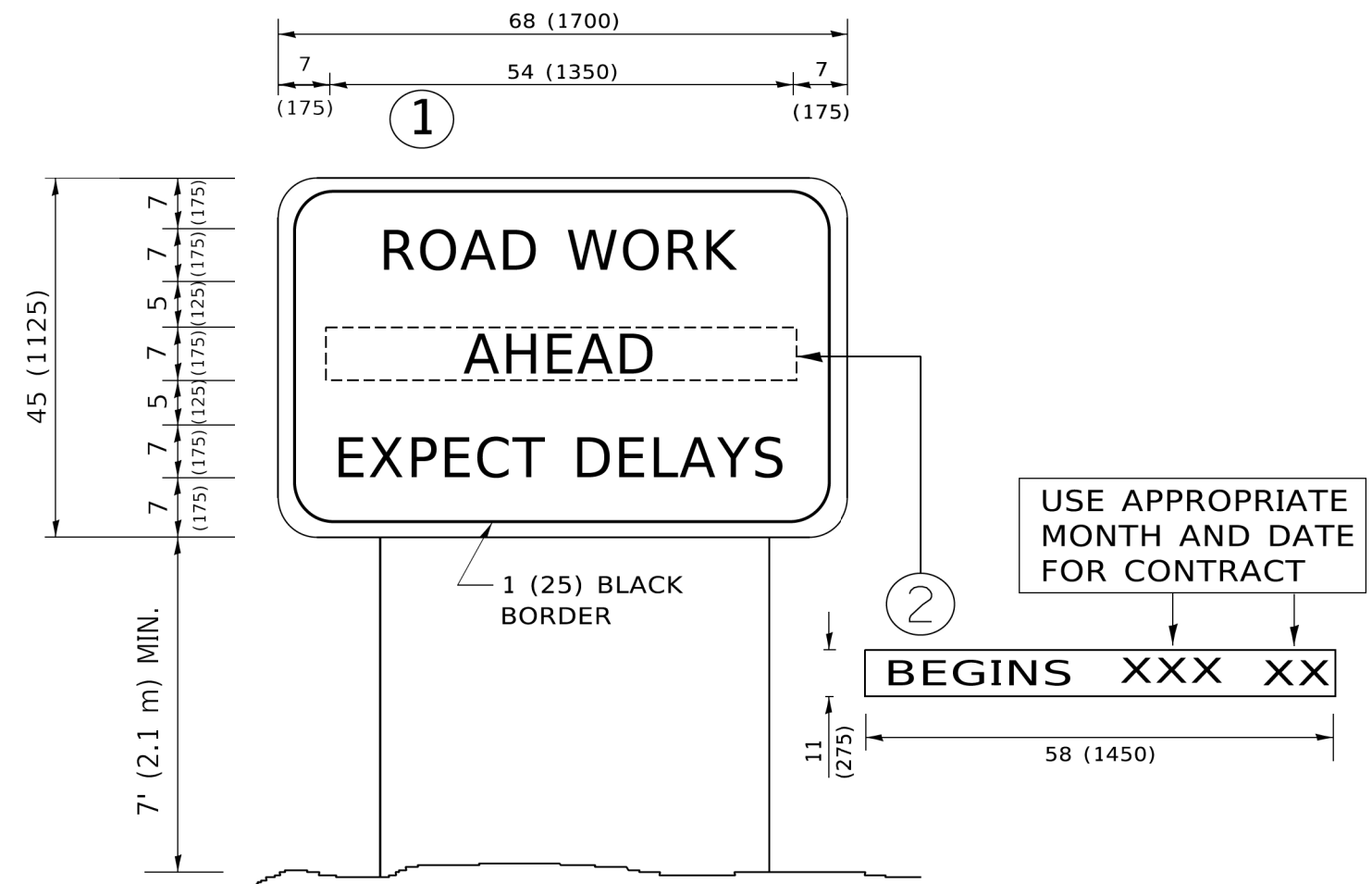
USER NAME = footemj	DESIGNED -	REVISED - T. RAMMACHER 03-02-98
PLOT SCALE = 50.0068" / ft.	DRAWN -	REVISED - E. GOMEZ 08-28-00
PLOT DATE = 3/4/2019	CHECKED -	REVISED - E. GOMEZ 08-28-00
	DATE - 09-18-94	REVISED - A. SCHUETZE 09-15-16

**STATE OF ILLINOIS
DEPARTMENT OF TRANSPORTATION**

SHORT TERM PAVEMENT MARKING LETTERS AND SYMBOLS

SCALE: NONE SHEET 1 OF 1 SHEETS STA. TO STA.

F.A.U. RTE.	SECTION	COUNTY	TOTAL SHEETS	SHEET NO.
0002	21-00068-00-RS	MCHENRY	21	20
TC-16			CONTRACT NO. 61K14	
ILLINOIS FED. AID PROJECT				



NOTES:

1. USE BLACK LETTERING ON ORANGE BACKGROUND.
2. ERECT SIGNS IN ADVANCE OF THE LOCATION FOR THE "ROAD CONSTRUCTION AHEAD" SIGN AT LOCATIONS AS DIRECTED BY THE ENGINEER.
3. ERECT SIGN ① WITH INSTALLED PANEL ② ONE WEEK PRIOR TO THE START OF CONSTRUCTION.
4. REMOVE PANEL ② SOON AFTER THE START OF CONSTRUCTION.
5. SEE SPECIAL PROVISION FOR "TEMPORARY INFORMATION SIGNING" FOR ADDITIONAL INFORMATION.
6. ONE SIGN ASSEMBLY EQUALS 25.70 SQ. FT. (2.3 SQ. M.)
7. SHALL BE PAID FOR AS TEMPORARY INFORMATION SIGNING.

ALL DIMENSIONS ARE IN INCHES (MILLIMETERS) UNLESS OTHERWISE SHOWN.

MODEL: Default
 FILE NAME: P:\110848\BID\NTEG\Illinois.gov\NVIDOT\Documents\DOT Offices\District 1\Projects\DH\5423-21\CADD\ha\CAD\sheet1c21.dgn

USER NAME = footemj	DESIGNED -	REVISED - R. MIRS 09-15-97
	DRAWN -	REVISED - R. MIRS 12-11-97
PLOT SCALE = 50.0000 ' / in.	CHECKED -	REVISED - T. RAMMACHER 02-02-99
PLOT DATE = 3/4/2019	DATE -	REVISED - C. JUCIUS 01-31-07

**STATE OF ILLINOIS
DEPARTMENT OF TRANSPORTATION**

**ARTERIAL ROAD
INFORMATION SIGN**

SCALE: NONE SHEET 1 OF 1 SHEETS STA. TO STA.

F.A.U. RTE.	SECTION	COUNTY	TOTAL SHEETS	SHEET NO.
0002	21-00068-00-RS	MCHENRY	21	21
TC-22			CONTRACT NO. 61K14	
ILLINOIS FED. AID PROJECT				