

03-08-2024 LETTING ITEM 005

STATE OF ILLINOIS
DEPARTMENT OF TRANSPORTATION

F.A.U. RTE.	SECTION	COUNTY	TOTAL SHEETS	SHEET NO.
1654	22-00034-00-SW	WILL	28	1
FED. ROAD DIST. NO. 1 ILLINOIS		FED. AID PROJECT J6ED(234)		

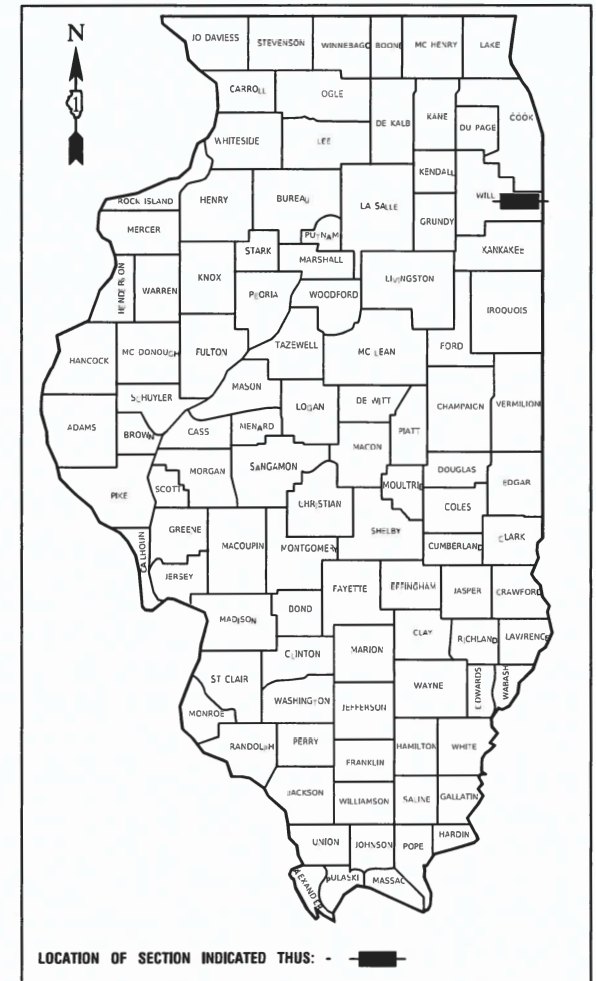
CONTRACT NO. 61K17

PLANS FOR PROPOSED FEDERAL AID HIGHWAY

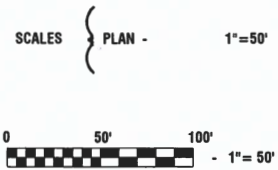
FAU ROUTE 1654 (COURT STREET) &
MUN ROUTE 1007(WILL CENTER ROAD)
SIDEWALK IMPROVEMENT
SECTION NO.: 22-00034-00-SW
PROJECT NO.: J6ED(234)
VILLAGE of MONEE
WILL COUNTY
JOB NO.: C-91-199-23

FOR INDEX OF SHEETS, SEE SHEET NO. 2
FOR HIGHWAY STANDARDS, SEE SHEET NO. 2

COURT STREET	
2019 ADT-	6,000
POSTED SPEED LIMIT-	25 MPH
FUNCTIONAL CLASSIFICATION-	MINOR ARTERIAL
WILL CENTER ROAD	
2019 ADT-	1,750
POSTED SPEED LIMIT-	25 MPH
FUNCTIONAL CLASSIFICATION-	LOCAL ROAD



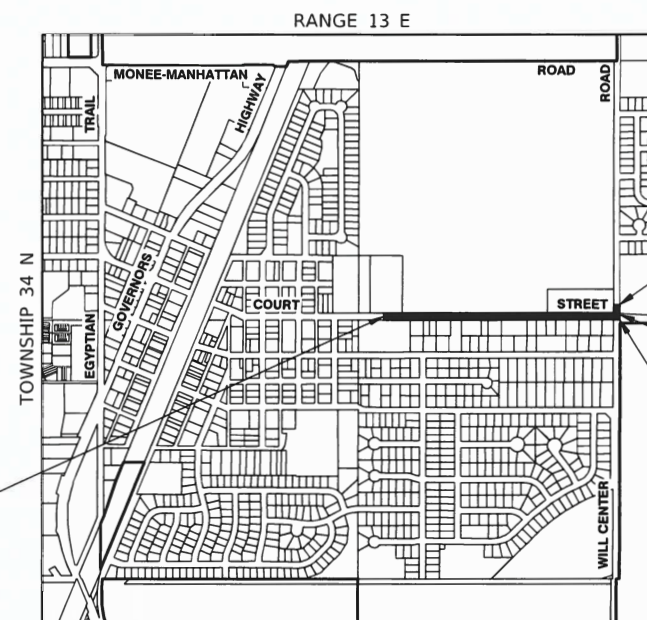
FEDERAL AID PROGRAM ENGINEER: CARMEN RAMOS, PE, SCHAUMBURG, IL
CONSULTANTS: ROBINSON ENGINEERING, LTD. 708-331-6700



FULL SIZE PLANS HAVE BEEN PREPARED USING STANDARD ENGINEERING SCALES, REDUCED SIZED PLANS WILL NOT CONFORM TO STANDARD SCALES, IN MAKING MEASUREMENTS ON REDUCED PLANS, THE ABOVE SCALES MAY BE USED.

J. U. L. I. E.
JOINT UTILITY LOCATION INFORMATION FOR EXCAVATION
1 - 800 - 892 - 0123
OR 811

VILLAGE OF MONEE



BEGIN PROJECT (COURT ST)
STA 12+45.34

END PROJECT (WILL CENTER RD)
STA 51+16.52

BEGIN PROJECT (WILL CENTER RD)
STA 50+00.00

END PROJECT (COURT ST)
STA 36+49.54

LOCATION MAP
NOT TO SCALE

GROSS AND NET LENGTH= 2,287.68 FEET= 0.43 MILES



LICENSE EXPIRES: 11/30/25
Troy A. Golek
09-29-23

STATE OF ILLINOIS DEPARTMENT OF TRANSPORTATION	
APPROVED	<i>23 Nov 2023</i> <i>Cheresa M. Bess</i> VILLAGE OF MONEE, MAYOR
PASSED	<i>1-2-2024</i> <i>C. Frick</i> DISTRICT 1 ENGINEER OF LOCAL ROADS & STREETS
RELEASING FOR BID BASED ON LIMITED REVIEW	<i>January 3, 2024</i> <i>Joey Rios IR</i> REGIONAL ENGINEER

PRINTED BY THE AUTHORITY OF
THE STATE OF ILLINOIS

CONTRACT NO. 61K17

INDEX OF SHEETS

1	COVER SHEET
2	INDEX OF SHEETS, HIGHWAY STANDARDS AND GENERAL NOTES
3-5	SUMMARY OF QUANTITIES
6	TYPICAL CROSS SECTIONS
7	ALIGNMENT, TIES AND BENCHMARKS
8-9	PLAN AND PROFILE
10-11	DRAINAGE & UTILITIES
12	LANDSCAPING, EROSION CONTROL & PAVEMENT MARKING
13	STORM WATER POLLUTION PREVENTION PLAN
14-18	IDOT DISTRICT ONE STANDARDS
19-28	CROSS SECTIONS

HIGHWAY STANDARDS

000001-08	STANDARD SYMBOLS, ABBREVIATIONS AND PATTERNS
280001-07	TEMPORARY EROSION CONTROL SYSTEMS
424001-11	PERPENDICULAR CURB RAMPS FOR SIDEWALKS
424016-05	MID-BLOCK CURB RAMPS FOR SIDEWALKS
424021-06	DEPRESSED CORNER FOR SIDEWALKS
442201-03	CLASS C AND D PATCHES
606001-08	CONCRETE CURB TYPE B AND COMBINATION CONCRETE CURB AND GUTTER
701001-02	OFF ROAD OPERATIONS, 2L, 2W, MORE THAN 15'(4.5m) AWAY
701006-05	OFF ROAD OPERATIONS, 2L, 2W, 15'(4.5m) TO 24"(600mm) FROM PAVEMENT EDGE
701011-04	OFF ROAD MOVING OPERATIONS, 2L,2W, DAY ONLY
701301-04	LANE CLOSURE, 2L, 2W, SHORT TIME OPERATIONS
701311-03	LANE CLOSURE, 2L, 2W, MOVING OPERATIONS - DAY ONLY
701501-06	URBAN LANE CLOSURE, 2L, 2W, UNDIVIDED
701801-06	SIDEWALK, CORNER OR CROSSWALK CLOSURE
701901-09	TRAFFIC CONTROL DEVICES
780001-05	TYPICAL PAVEMENT MARKINGS

DISTRICT ONE DETAILS

BD-22	PAVEMENT PATCHING FOR HMA SURFACED PAVEMENT
BD-24	CURB OR CURB AND GUTTER REMOVAL AND REPLACEMENT
BD-36	FIRE HYDRANT TO BE MOVED
TC-10	TRAFFIC CONTROL AND PROTECTION FOR SIDE ROADS, INTERSECTIONS AND DRIVEWAYS
TC-13	TYPICAL PAVEMENT MARKINGS

GENERAL NOTES

- ITEMS OF WORK LISTED IN THE SUMMARY OF QUANTITIES NOT SPECIFICALLY CALLED OUT ON THE PLANS SHALL BE PERFORMED AS DIRECTED BY THE ENGINEER.
- THE ROBINSON ENGINEERING, LTD. FIELD OFFICE (708-331-6700), AND THE PUBLIC WORKS DIRECTOR, AT THE VILLAGE OF MONEE (708-534-8306), SHALL BE NOTIFIED THREE (3) WORKING DAYS BEFORE CONSTRUCTION BEGINS.
- BEFORE STARTING ANY EXCAVATION THE CONTRACTOR SHALL CALL "J.U.L.I.E." AT (800) 892-0123 OR 811 AND (312) 744-7000 FOR FIELD LOCATIONS OF BURIED ELECTRIC, TELEPHONE AND GAS UTILITIES. (48 HOUR NOTIFICATION REQUIRED)
- UTILITIES INDICATED ON THE PLANS ARE PROVIDED FOR THE CONTRACTOR'S USE AND ARE BASED UPON INFORMATION AVAILABLE AT THE TIME OF THE ADVERTISEMENT FOR BIDS. THE OWNER AND ENGINEER DO NOT GUARANTEE THE ACCURACY OF UTILITY INFORMATION.
- IT SHALL BE THE CONTRACTOR'S RESPONSIBILITY TO VERIFY ALL DIMENSIONS AND CONDITIONS EXISTING IN THE FIELD PRIOR TO CONSTRUCTION AND ORDERING OF MATERIALS.
- ANY LOOSE MATERIAL DEPOSITED IN THE FLOW LINE OF DITCHES, GUTTERS OR OTHER DRAINAGE STRUCTURES SHALL BE REMOVED BY THE END OF EACH DAY BY THE CONTRACTOR.
- CONTRACTOR SHALL TAKE PRECAUTION BY PRESERVING EXISTING TREES WITHIN THE RIGHT OF WAY. IF ANY DAMAGE OCCURS, TREES SHALL BE REPLACED IN KIND PER ARTICLE 201.07 REPAIR OR REPLACEMENT OF EXISTING PLANT MATERIAL REQUIREMENTS STATED HEREIN.
- NO PAVEMENT PATCHING SHALL BE PERMITTED AFTER FRIDAY AT 3:00 PM OF EACH AND EVERY WEEK AND NO HOLES WILL BE ALLOWED TO REMAIN OPEN OVERNIGHT OR OVER THE WEEKEND.
- ALL EQUIPMENT SHALL BE REMOVED OFF THE VILLAGE STREETS DURING ALL HOLIDAY WEEKENDS AS COORDINATED WITH THE VILLAGE.

COMMITMENTS

- NONE

FILE NAME = 22R0783-INDX-01 - P01	USER NAME =	DESIGNED -- JR	REVISED --	STATE OF ILLINOIS DEPARTMENT OF TRANSPORTATION	COURT STREET COURT STREET SIDEWALKS INDEX OF SHEETS, STATE STANDARDS & GENERAL NOTES	F.A.U. RTE.	SECTION	COUNTY	TOTAL SHEETS	SHEET NO.	
	CHECKED -- WPD	REVISED --	1654			22-00034-00-SW	WILL	28	2		
	PLOT SCALE =	DRAWN -- KWM	REVISED --			CONTRACT NO. 61K17					
	PLOT DATE = 09-29-23	CHECKED -- AG	REVISED --			SCALE: NONE	SHEET NO. 2 OF 28 SHEETS	STA. TO STA.	FED. ROAD DIST. NO. 1	ILLINOIS	FED. AID PROJECT J6ED(234)

S.I.	CODE NO.	PAY ITEM	UNIT	TOTAL QUANTITY	FED 80% VILLAGE 20% SAFETY 0021
*	20100110	TREE REMOVAL (6 TO 15 UNITS DIAMETER)	UNIT	8	8
	20201200	REMOVAL AND DISPOSAL OF UNSUITABLE MATERIAL	CU YD	200	200
	20800150	TRENCH BACKFILL	CU YD	50	50
	21101615	TOPSOIL FURNISH AND PLACE, 4"	SQ YD	4,850	4,850
	25100630	EROSION CONTROL BLANKET	SQ YD	4,850	4,850
	28000305	TEMPORARY DITCH CHECKS	FOOT	250	250
	28000400	PERIMETER EROSION BARRIER	FOOT	200	200
	28000510	INLET FILTERS	EACH	3	3
	28100205	STONE RIPRAP, CLASS A3	TON	60	60
	30300001	AGGREGATE SUBGRADE IMPROVEMENT	CU YD	200	200
	35101600	AGGREGATE BASE COURSE, TYPE B 4"	SQ YD	1,555	1,555
	42400200	PORTLAND CEMENT CONCRETE SIDEWALK 5 INCH	SQ FT	14,000	14,000
	42400800	DETECTABLE WARNINGS	SQ FT	140	140
	44000200	DRIVEWAY PAVEMENT REMOVAL	SQ YD	300	300
	44000300	CURB REMOVAL	FOOT	150	150

FILE NAME = 22R0783-QUAN-01 - P01

USER NAME =	DESIGNED -- JR	REVISED --
	CHECKED -- JR	REVISED --
PLOT SCALE =	DRAWN -- KWM	REVISED --
PLOT DATE = 09-29-23	CHECKED -- AG	REVISED --

STATE OF ILLINOIS
DEPARTMENT OF TRANSPORTATION

COURT STREET COURT STREET SIDEWALKS SUMMARY OF QUANTITIES			
SCALE: NONE	SHEET NO. 3	OF 28 SHEETS	STA. TO STA.

F.A.U. RTE.	SECTION	COUNTY	TOTAL SHEETS	SHEET NO.
1654	22-00034-00-SW	WILL	28	3
CONTRACT NO. 61K17				
FED. ROAD DIST. NO. 1 ILLINOIS FED. AID PROJECT J6ED(234)				

S.I.	CODE NO.	PAY ITEM	UNIT	TOTAL QUANTITY	FED 80% VILLAGE 20% SAFETY 0021
	44000500	COMBINATION CURB AND GUTTER REMOVAL	FOOT	60	60
	48102100	AGGREGATE WEDGE SHOULDER, TYPE B	TON	65	65
	50105220	PIPE CULVERT REMOVAL	FOOT	100	100
	54213657	PRECAST REINFORCED CONCRETE FLARED END SECTIONS 12"	EACH	1	1
	54213660	PRECAST REINFORCED CONCRETE FLARED END SECTIONS 15"	EACH	5	5
	54213663	PRECAST REINFORCED CONCRETE FLARED END SECTIONS 18"	EACH	1	1
	542C0217	PIPE CULVERTS, CLASS C, TYPE 1 12"	FOOT	25	25
	542C0220	PIPE CULVERTS, CLASS C, TYPE 1 15"	FOOT	140	140
	542C0223	PIPE CULVERTS, CLASS C, TYPE 1 18"	FOOT	65	65
	550B0050	STORM SEWERS, CLASS B, TYPE 1 12"	FOOT	10	10
	56109210	WATER VALVES TO BE ADJUSTED	EACH	3	3
*	56400400	FIRE HYDRANTS TO BE RELOCATED	EACH	3	3
	60221100	MANHOLES, TYPE A, 5'-DIAMETER, TYPE 1 FRAME, CLOSED LID	EACH	2	2
	60240301	INLETS, TYPE B, TYPE 8 GRATE	EACH	1	1
	60500050	REMOVING CATCH BASINS	EACH	1	1

FILE NAME = 22R0783-QUAN-01 - P02

USER NAME =	DESIGNED -- JR	REVISED --
	CHECKED -- JR	REVISED --
PLOT SCALE =	DRAWN -- KWM	REVISED --
PLOT DATE = 09-29-23	CHECKED -- AG	REVISED --

STATE OF ILLINOIS
DEPARTMENT OF TRANSPORTATION

COURT STREET COURT STREET SIDEWALKS SUMMARY OF QUANTITIES			
SCALE: NONE	SHEET NO. 4	OF 28 SHEETS	STA. TO STA.

F.A.U. RTE.	SECTION	COUNTY	TOTAL SHEETS	SHEET NO.
1654	22-00034-00-SW	WILL	28	4
CONTRACT NO. 61K17				
FED. ROAD DIST. NO. 1 ILLINOIS FED. AID PROJECT J6ED(234)				

S.I.	CODE NO.	PAY ITEM	UNIT	TOTAL QUANTITY	FED 80% VILLAGE 20% SAFETY 0021
	60600605	CONCRETE CURB, TYPE B	FOOT	150	150
	60608562	COMBINATION CONCRETE CURB AND GUTTER, TYPE M-4.12	FOOT	60	60
	67100100	MOBILIZATION	LSUM	1	1
	70102620	TRAFFIC CONTROL AND PROTECTION, STANDARD 701501	LSUM	1	1
	70102640	TRAFFIC CONTROL AND PROTECTION, STANDARD 701801	LSUM	1	1
*	78000600	THERMOPLASTIC PAVEMENT MARKING - LINE 12"	FOOT	700	700
*	78000650	THERMOPLASTIC PAVEMENT MARKING - LINE 24"	FOOT	25	25
	X5427602	REMOVE EXISTING FLARED END SECTION	EACH	3	3
	X5510010	STORM SEWER CONNECTION	EACH	4	4
	X2020410	EARTH EXCAVATION (SPECIAL)	CU YD	900	900
	X2501020	SEEDING, CLASS 2A (SPECIAL)	ACRE	1	1
	XX008729	REMOVE AND REINSTALL SIGN PANEL	EACH	6	6
	XX009224	CLASS D PATCHES, SPECIAL	SQ YD	150	150
	Z0004530	HOT-MIX ASPHALT DRIVEWAY PAVEMENT, 8"	SQ YD	300	300
	Z0017400	DRAINAGE & UTILITY STRUCTURES TO BE ADJUSTED	EACH	1	1

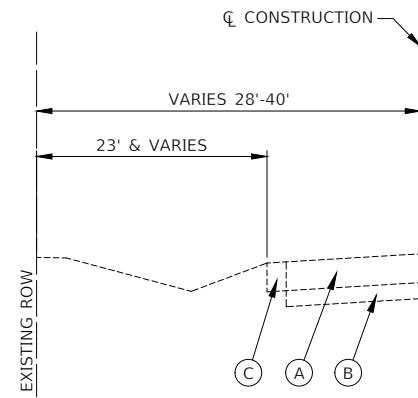
FILE NAME = 22R0783-QUAN-01 - P03

USER NAME =	DESIGNED -- JR	REVISED --
	CHECKED -- JR	REVISED --
PLOT SCALE =	DRAWN -- KWM	REVISED --
PLOT DATE = 09-29-23	CHECKED -- AG	REVISED --

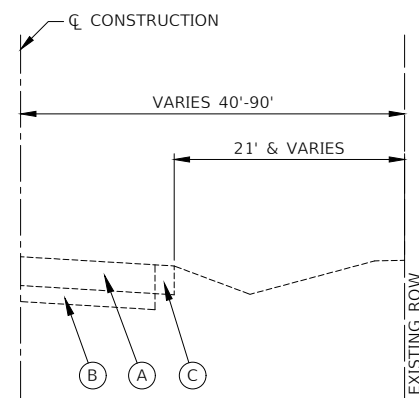
**STATE OF ILLINOIS
DEPARTMENT OF TRANSPORTATION**

COURT STREET COURT STREET SIDEWALKS SUMMARY OF QUANTITIES			
SCALE: NONE	SHEET NO. 5	OF 28 SHEETS	STA. TO STA.

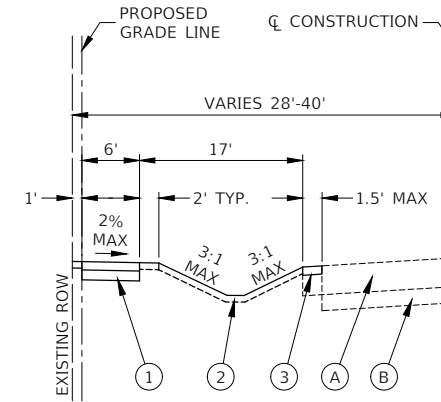
F.A.U. RTE.	SECTION	COUNTY	TOTAL SHEETS	SHEET NO.
1654	22-00034-00-SW	WILL	28	5
CONTRACT NO. 61K17				
FED. ROAD DIST. NO. 1	ILLINOIS	FED. AID PROJECT	J6ED(234)	



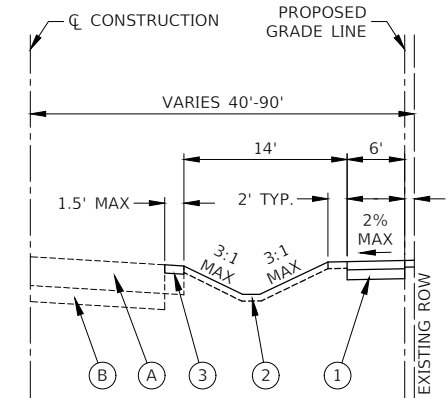
**EXISTING TYPICAL SECTION
COURT STREET**



**EXISTING TYPICAL SECTION
WILL CENTER ROAD**



**PROPOSED TYPICAL SECTION
COURT STREET**



**PROPOSED TYPICAL SECTION
WILL CENTER ROAD**

LEGEND

- (A) EXISTING HOT-MIX ASPHALT PAVEMENT
- (B) EXISTING SUBBASE
- (C) EXISTING AGGREGATE SHOULDER
- (1) PORTLAND CEMENT CONCRETE SIDEWALK, 5" AGGREGATE BASE COURSE, TYPE B, 4"
- (2) TOPSOIL, FURNISH AND PLACE, 4" SEEDING, CLASS 2A (SPECIAL) EROSION CONTROL BLANKET
- (3) AGGREGATE WEDGE SHOULDER, TYPE B, 6"

HOT-MIX ASPHALT MIXTURE REQUIREMENTS

MIXTURE TYPE	AIR VOIDS @ Ndes	QMP
CLASS D PATCHES, SPECIAL		
HOT-MIX ASPHALT SURFACE COURSE, MIX "D", N50 (IL 9.5 MM), 2"	4% @ 50 Gyr.	LR 1030-2
HOT-MIX ASPHALT BINDER COURSE, IL-19.0, N50, 4"	4% @ 50 Gyr.	LR 1030-2
HOT-MIX ASPHALT DRIVEWAY PAVEMENT, 8"		
HOT-MIX ASPHALT SURFACE COURSE, MIX "D", N50 (IL 9.5 MM), 2"	4% @ 50 Gyr.	LR 1030-2
HOT-MIX ASPHALT BINDER COURSE, IL-19.0, N50, 6"	4% @ 50 Gyr.	LR 1030-2
QMP DESIGNATION: QUALITY CONTROL/QUALITY ASSURANCE (QC/QA) PER LR1030-2		

NOTES:

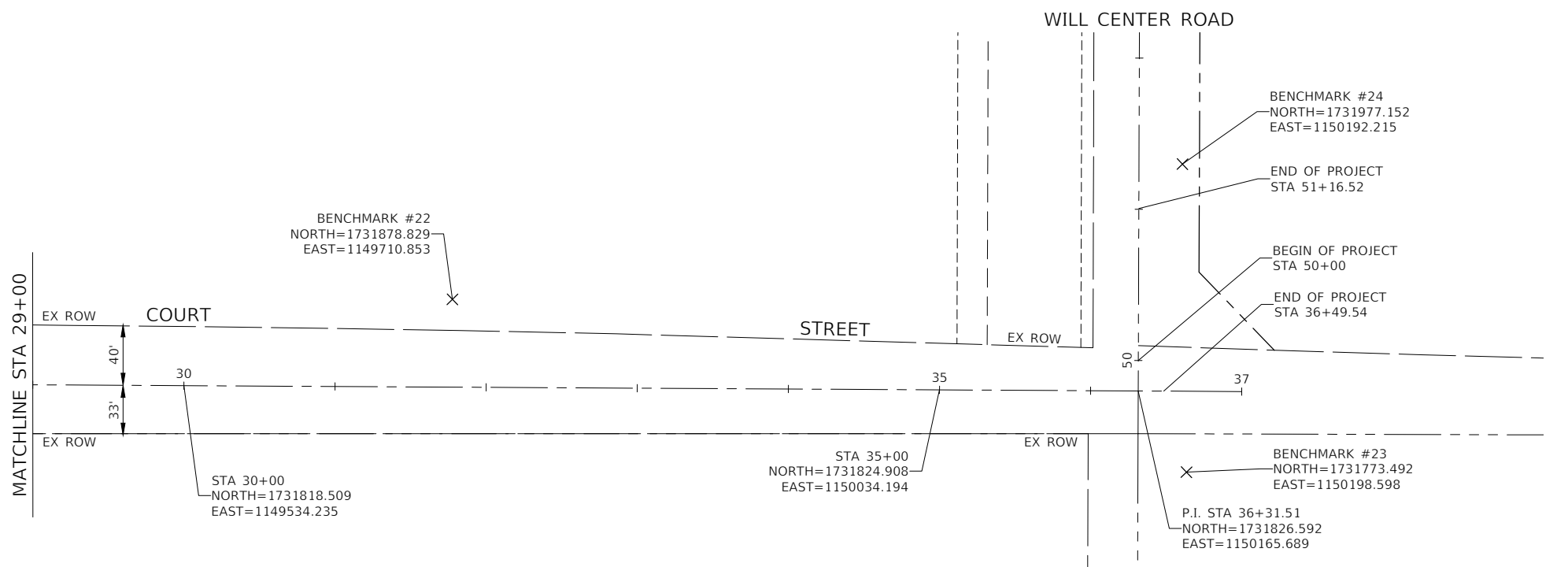
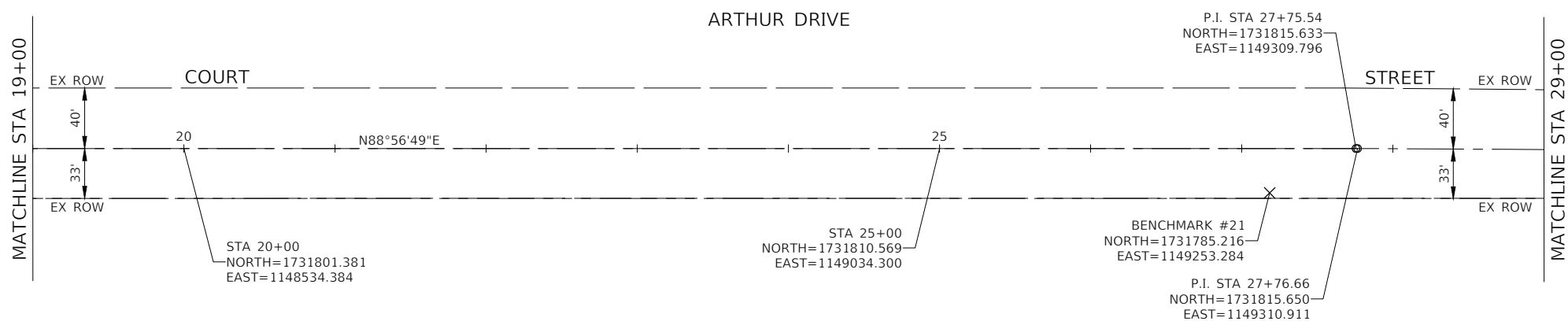
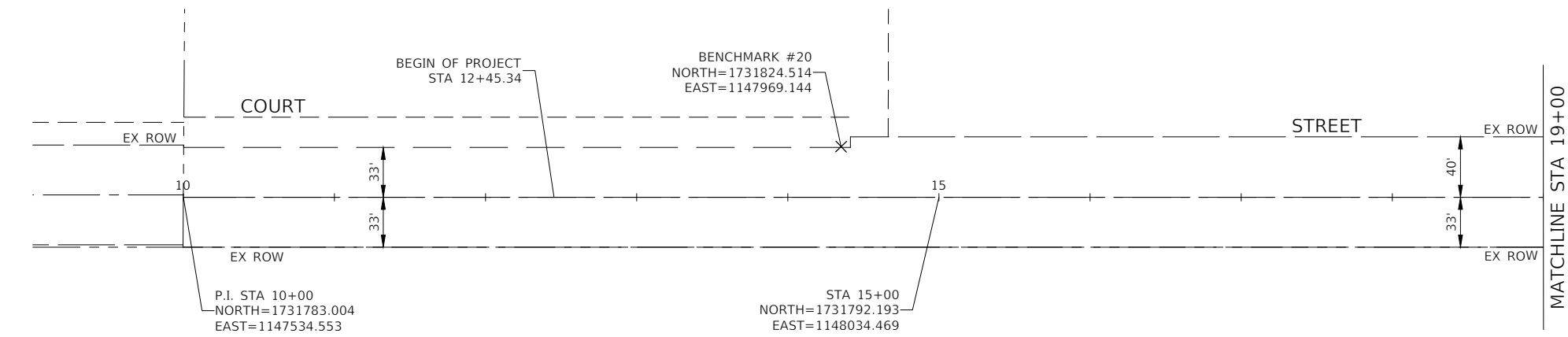
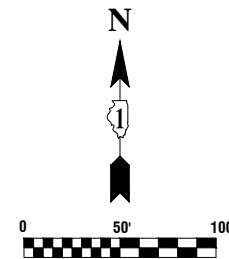
1. THE UNIT WEIGHT USED TO CALCULATE ALL HMA SURFACE MIXTURE IS 112 LBS/SQ/IN.
2. THE "AC TYPE" FOR POLYMERIZED HMA MIXES SHALL BE "SBS/SBR PG 76-22" AND FOR NON-POLYMERIZED HMA THE "AC TYPE" SHALL BE "PG-64-22" UNLESS MODIFIED BY RECLAIMED MATERIALS SPECIFICATIONS.

FILE NAME = 22R0783-TYPX-01 - TYPX01	USER NAME =	DESIGNED -- JR	REVISED -- ##
		CHECKED -- JR	REVISED -- ##
	PLOT SCALE =	DRAWN -- KWM	REVISED -- ##
	PLOT DATE = 09-29-23	CHECKED -- AG	REVISED -- ##

STATE OF ILLINOIS
DEPARTMENT OF TRANSPORTATION

COURT STREET COURT STREET SIDEWALKS TYPICAL CROSS SECTIONS			
SCALE: NONE	SHEET NO. 6	OF 28 SHEETS	STA. TO STA.

F.A.# RTE.	SECTION	COUNTY	TOTAL SHEETS	SHEET NO.
1654	22-00034-00-SW	WILL	28	6
CONTRACT NO. 61K17				
FED. ROAD DIST. NO. 1 ILLINOIS FED. AID PROJECT J6ED(234)				



NOTES

1. COORDINATES ARE BASED ON ILLINOIS STATE PLANE EASTERN ZONE NORTH AMERICAN DATUM 1983
2. SURVEY FEET UNITS WERE USED.
3. ALL ELEVATIONS REFER TO NAVD88 DATUM.

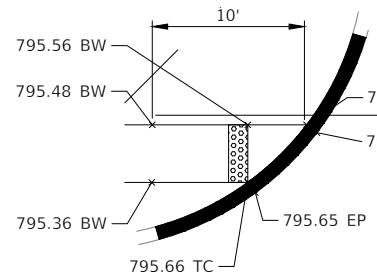
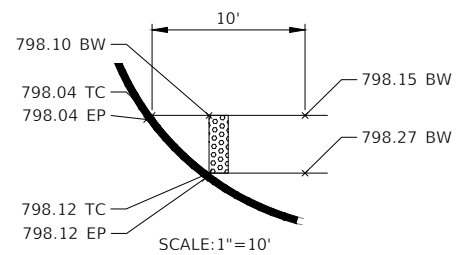
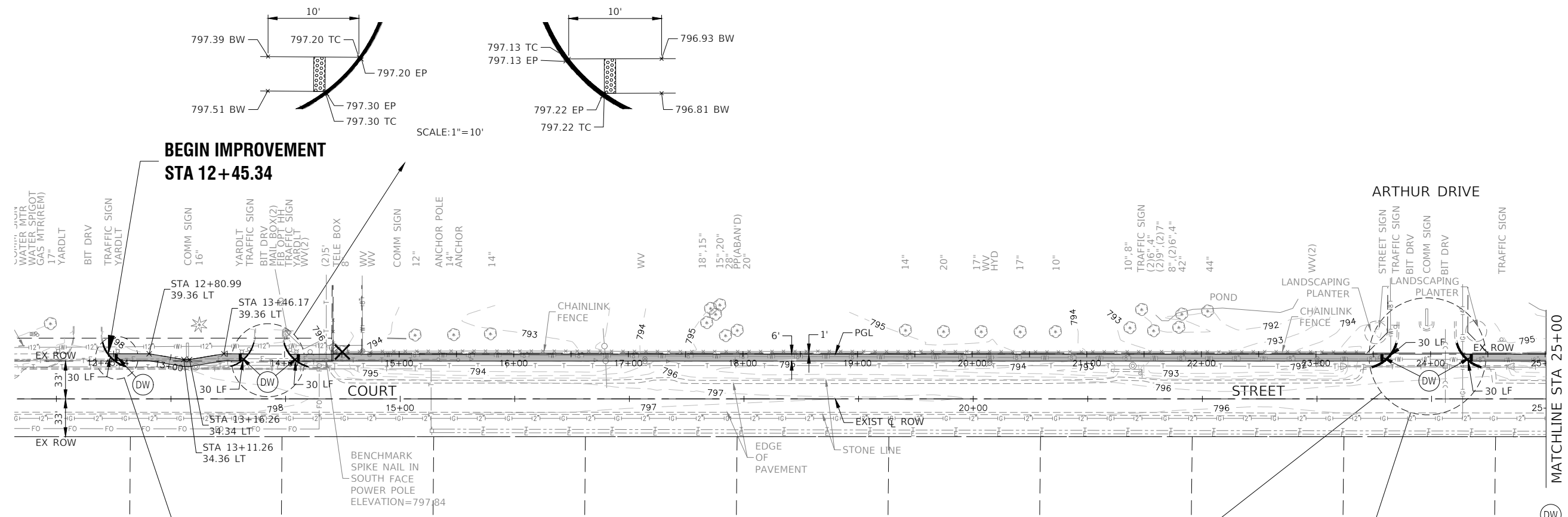
BENCHMARKS

- BENCHMARK #20
SPIKE NAIL IN SOUTH FACE POWER POLE
ELEVATION=797.84
- BENCHMARK #21
MINI SPIKE NAIL IN NORTH FACE POWER POLE WITH LIGHT
ELEVATION=798.24
- BENCHMARK #22
CUT SQUARE ON SOUTH SIDE OF CONCRETE LIGHT POLE BASE
ELEVATION=803.64
- BENCHMARK #23
SPIKE NAIL IN NORTH FACE POWER POLE WITH LIGHT
ELEVATION=793.36
- BENCHMARK #24
MAG NAIL IN WEST FACE POWER POLE
ELEVATION=794.56

FILE NAME = 22R0783-TIES-01 - P01	USER NAME =	DESIGNED -- JR	REVISED --	STATE OF ILLINOIS DEPARTMENT OF TRANSPORTATION	COURT STREET COURT STREET SIDEWALKS ALIGNMENT, TIES AND BENCHMARKS			F.A.U. RTE.	SECTION	COUNTY	TOTAL SHEETS	SHEET NO.	
	PLOT SCALE =	DRAWN -- KWM	REVISED --		1654	22-00034-00-SW	WILL	28	7				
PLOT DATE = 09-29-23	CHECKED -- AG	REVISED --		SCALE: 1"=50'	SHEET NO. 7	OF 28 SHEETS	STA. 10+00.00	TO STA. 36+31.51	CONTRACT NO. 61K17				
								FED. ROAD DIST. NO. 1	ILLINOIS	FED. AID PROJECT J6ED(234)			



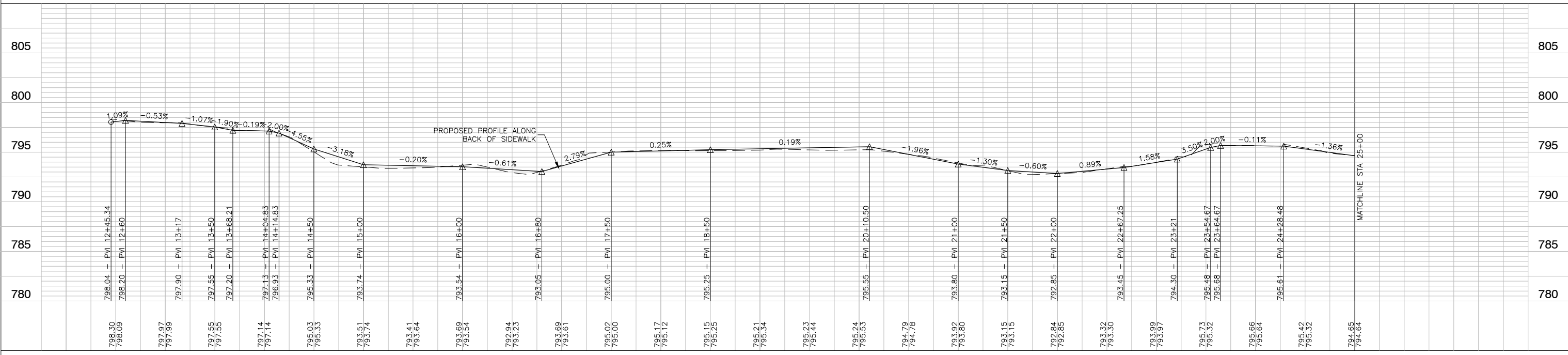
**BEGIN IMPROVEMENT
STA 12+45.34**



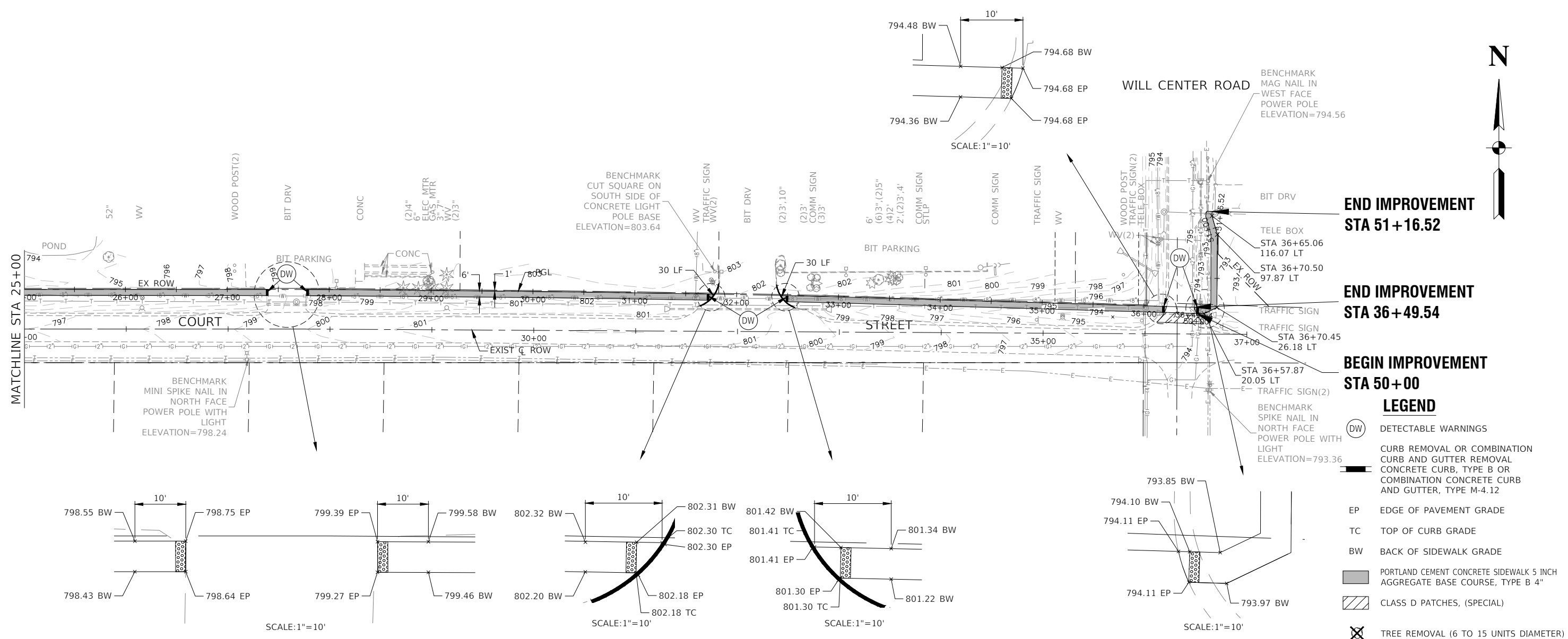
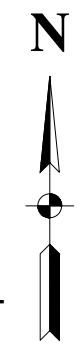
SCALE: 1"=10'

LEGEND

- DETECTABLE WARNINGS
- CURB REMOVAL OR COMBINATION
- CURB AND GUTTER REMOVAL
- CONCRETE CURB, TYPE B OR COMBINATION CONCRETE CURB AND GUTTER, TYPE M-4.12
- EP EDGE OF PAVEMENT GRADE
- TC TOP OF CURB GRADE
- BW BACK OF SIDEWALK GRADE
- PORTLAND CEMENT CONCRETE SIDEWALK 5 INCH AGGREGATE BASE COURSE, TYPE B 4"
- TREE REMOVAL (6 TO 15 UNITS DIAMETER)



FILE NAME = 22R0783-PLPR01 - PLPR01	USER NAME =	DESIGNED - JR	REVISED -	STATE OF ILLINOIS DEPARTMENT OF TRANSPORTATION	COURT STREET COURT STREET SIDEWALKS PLAN AND PROFILE			F.A.U. RTE. 1654	SECTION 22-00034-00-SW	COUNTY WILL	TOTAL SHEETS 28	SHEET NO. 8
	PLOT SCALE =	DRAWN - BG	REVISED -		SCALE: 1"=50'	SHEET NO. 8	OF 28 SHEETS	STA. 12+45.34	TO STA. 25+00	CONTRACT NO. 61K17		
	PLOT DATE = 09-29-23	CHECKED - AG	REVISED -		FED. ROAD DIST. NO. 1	ILLINOIS	FED. AID PROJECT J6ED(234)					



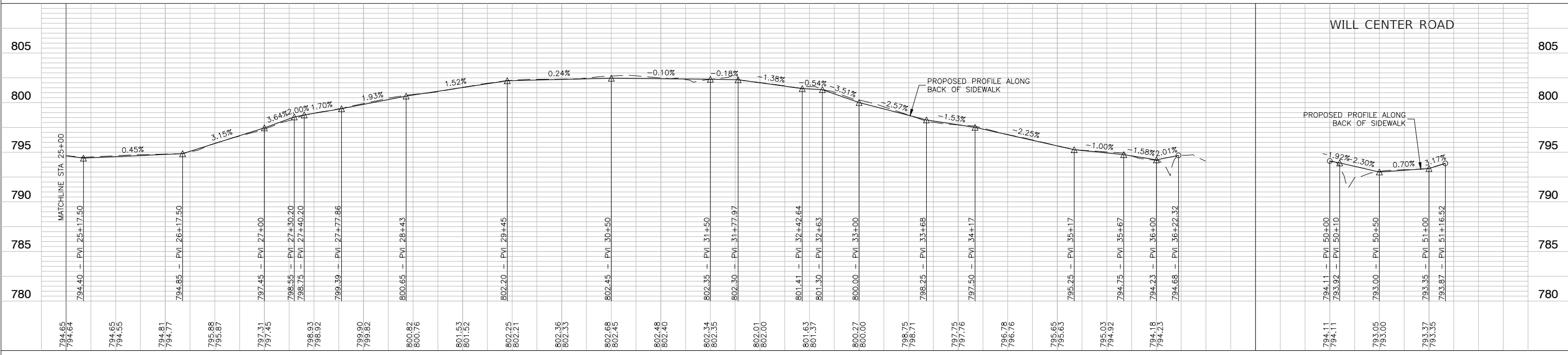
**END IMPROVEMENT
STA 51+16.52**

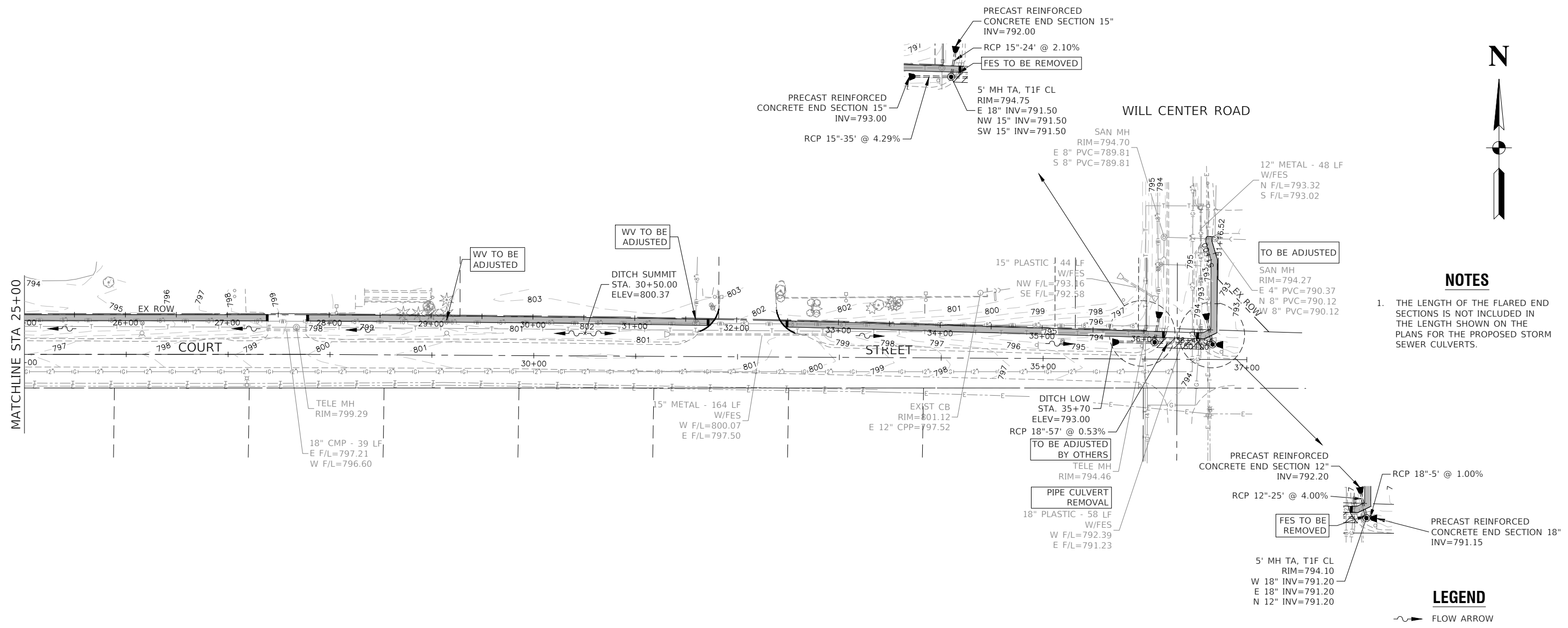
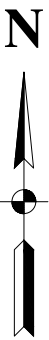
**END IMPROVEMENT
STA 36+49.54**

**BEGIN IMPROVEMENT
STA 50+00**

LEGEND

- (DW) DETECTABLE WARNINGS
- CURB REMOVAL OR COMBINATION CURB AND GUTTER REMOVAL
- CONCRETE CURB, TYPE B OR COMBINATION CONCRETE CURB AND GUTTER, TYPE M-4.12
- EP EDGE OF PAVEMENT GRADE
- TC TOP OF CURB GRADE
- BW BACK OF SIDEWALK GRADE
- PORTLAND CEMENT CONCRETE SIDEWALK 5 INCH AGGREGATE BASE COURSE, TYPE B 4"
- CLASS D PATCHES, (SPECIAL)
- ⊗ TREE REMOVAL (6 TO 15 UNITS DIAMETER)



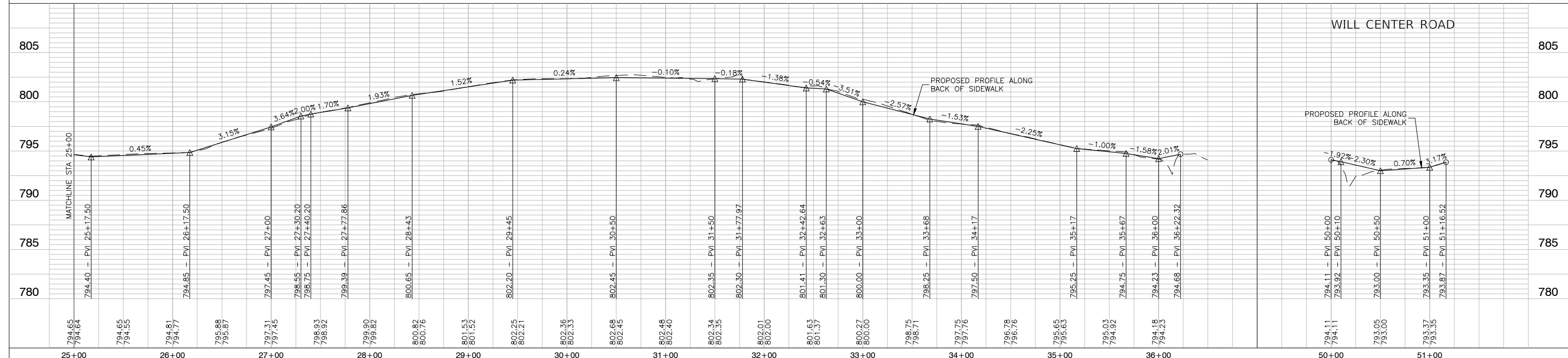


NOTES

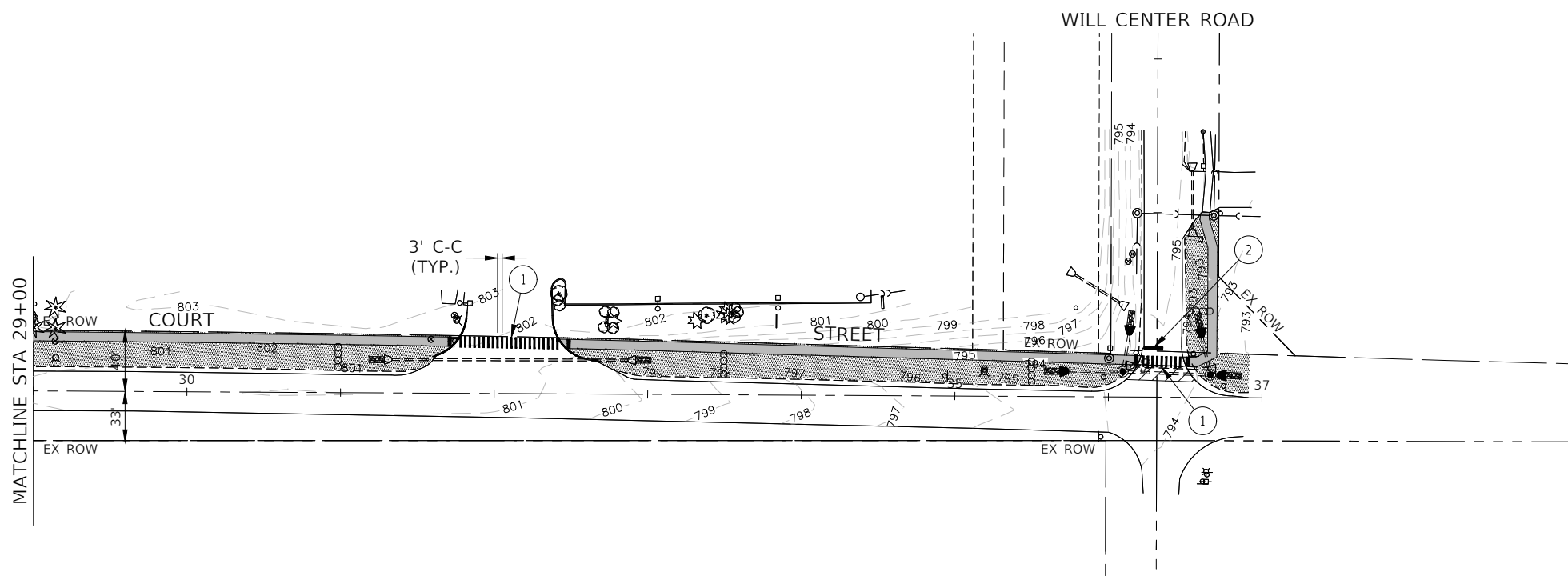
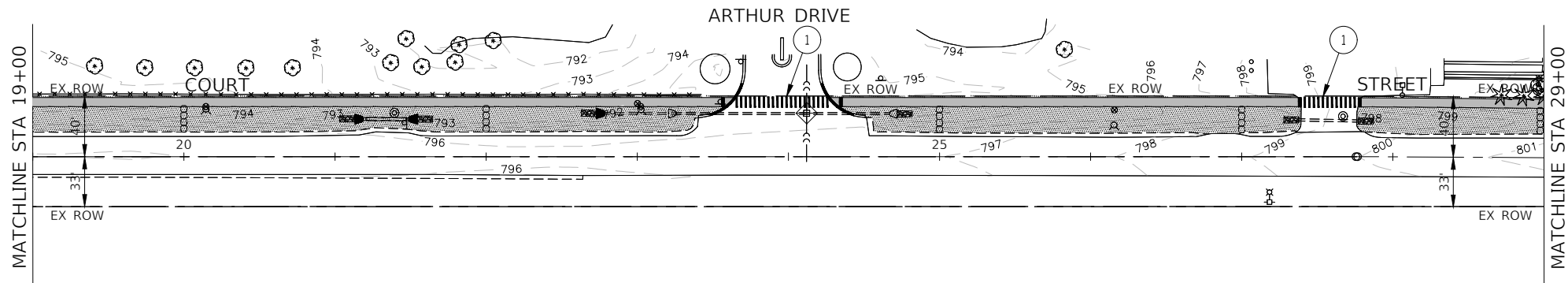
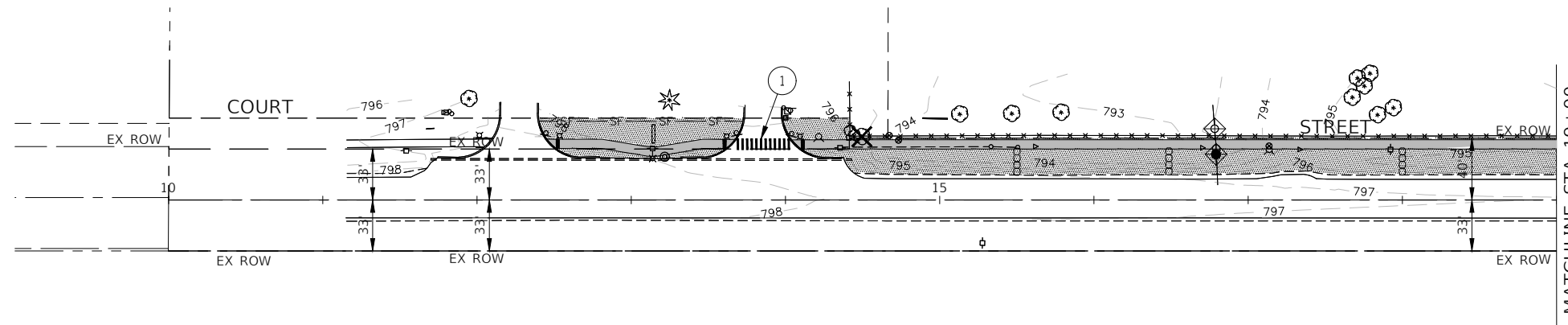
1. THE LENGTH OF THE FLARED END SECTIONS IS NOT INCLUDED IN THE LENGTH SHOWN ON THE PLANS FOR THE PROPOSED STORM SEWER CULVERTS.

LEGEND

~> FLOW ARROW



FILE NAME = 22R0783-PLPR-01 - STRM02	USER NAME =	DESIGNED - JR	REVISED -	STATE OF ILLINOIS DEPARTMENT OF TRANSPORTATION	COURT STREET COURT STREET SIDEWALKS DRAINAGE & UTILITIES			FAU R.TE.	SECTION	COUNTY	TOTAL SHEETS	SHEET NO.
	PLOT SCALE =	CHECKED - JR	REVISED -		1654	22-00034-00-SW	WILL	28	11			
	PLOT DATE = 09-29-23	DRAWN - BG	REVISED -		SCALE: 1"=50'			SHEET NO. 11 OF 28 SHEETS			STA. 25+00 TO STA. 51+16.52	
		CHECKED - AG	REVISED -		CONTRACT NO. 61K17			FED. ROAD DIST. NO. 1		ILLINOIS FED. AID PROJECT J6ED(234)		



- LEGEND**
- SF— PERIMETER EROSION BARRIER
 - ◊ INLET FILTERS
 - TEMPORARY DITCH CHECKS
 - ▨ STONE RIPRAP, CLASS A3
 - ▩ TOPSOIL FURNISH AND PLACE, 4" SEEDING, CLASS 2A EROSION CONTROL BLANKET
 - ① THERMOPLASTIC PAVEMENT MARKING — LINE 12" (WHITE)
 - ② THERMOPLASTIC PAVEMENT MARKING — LINE 24" (WHITE)

FILE NAME = 22R0783-EROS-01 - P01

USER NAME =	DESIGNED — JR	REVISED —
	CHECKED — JR	REVISED —
PLOT SCALE =	DRAWN — KWM	REVISED —
PLOT DATE = 09-29-23	CHECKED — AG	REVISED —

**STATE OF ILLINOIS
DEPARTMENT OF TRANSPORTATION**

**COURT STREET
COURT STREET SIDEWALKS
LANDSCAPING, EROSION CONTROL & PAVEMENT MARKING**

SCALE: 1"=50' SHEET NO. 12 OF 28 SHEETS STA. 12+45.34 TO STA. 51+16.52

F.A.U. RTE.	SECTION	COUNTY	TOTAL SHEETS	SHEET NO.
1654	22-00034-00-SW	WILL	28	12
CONTRACT NO. 61K17				
FED. ROAD DIST. NO. 1	ILLINOIS	FED. AID PROJECT	J6ED(234)	

GENERAL NOTES

THIS STORMWATER POLLUTION PREVENTION PLAN (SWPPP) HAS BEEN PREPARED TO COMPLY WITH THE PROVISIONS OF NPDES ILR10 CONSTRUCTION GENERAL PERMIT (CGP) ISSUED BY THE ILLINOIS ENVIRONMENTAL PROTECTION AGENCY FOR STORMWATER DISCHARGES FROM CONSTRUCTION SITE ACTIVITIES.

THE CONTRACTOR IS RESPONSIBLE FOR HAVING THE SWPPP ON SITE AT ALL TIMES. THE CONTRACTOR IS ALSO RESPONSIBLE FOR PROVIDING THE QUALIFIED PERSONNEL AND FOR PERFORMING THE REQUIRED INSPECTIONS.

1. PROJECT DESCRIPTION

THE PROJECT CONSISTS OF THE CONSTRUCTION OF SIDEWALKS, INSTALLATION OF NEW STORM SEWER / PIPE CULVERTS AND EXTENSION OF EXISTING PIPE CULVERTS. THE TOTAL AREA OF DISTURBANCE IS APPROXIMATELY 1.20 ACRES.

2. EXISTING SITE CONDITIONS AND SURROUNDING AREAS

THE WORK IS CONTAINED WITHIN THE VILLAGE OF MONEE RIGHT-OF-WAY AND/OR OTHER PUBLIC SURFACE. AREAS SURROUNDING THE PROJECT ARE RESIDENTIAL AND INDUSTRIAL.

3. SOILS

THE SOIL WITHIN THE PROJECT SITE ARE A MIXTURES OF REDDICK CLAY LOAM AND ADRES SILT LOAM. EXCAVATION OUTSIDE OF PAVED AREAS WILL BE BACKFILLED WITH NATIVE SOILS.

4. STANDARD SOIL EROSION AND SEDIMENTATION CONTROL PRACTICES

SOIL EROSION AND SEDIMENT CONTROL PRACTICES FOR THIS PROJECT SHALL BE PERFORMED IN ACCORDANCE WITH THE DETAILS AS PROVIDED IN THE PLANS. ALL EROSION CONTROL PRACTICES SHALL BE INSTALLED PRIOR TO STARTING EACH PHASE OF CONSTRUCTION. AFTER AWARD OF THE CONTRACT, THE CONTRACTOR FOR THE PROJECT SHALL SIGN THIS PLAN ACKNOWLEDGING RESPONSIBILITY FOR THE IMPLEMENTATION OF ON-GOING MAINTENANCE OF THIS PLAN. THE EROSION CONTROL PRACTICES SHALL BE INSPECTED AT LEAST WEEKLY, AND AFTER ANY RAINFALL GREATER THAN 0.5". ANY VISIBLE DISRUPTION TO THE EROSION CONTROL PRACTICES SHALL BE IMMEDIATELY REPAIRED. ANY EXISTING SUBSURFACE DRAINAGE SYSTEMS OR FIELD TILES THAT ARE DISTURBED DURING THE CONSTRUCTION SHALL BE RESTORED. TOPSOIL SHALL BE STRIPPED AT THE TIME OF EXCAVATION AND REPLACED DURING THE BACKFILL OPERATION. ANY DUST OR MUD FROM THIS PROJECT TRACKED ONTO PUBLIC STREETS SHALL BE CLEANED UP AT THE END OF EACH WORKING DAY.

5. PERMANENT STABILIZATION PLANS

SEED AND EROSION CONTROL BLANKET SHALL BE INSTALLED ON ALL DISTURBED AREAS IN ACCORDANCE WITH THE RESTORATION PLANS. THE CONTRACTOR SHALL BE RESPONSIBLE FOR MAINTENANCE OF ALL VEGETATION AND SEEDS AREAS FOR A PERIOD OF ONE-YEAR AFTER COMPLETION OF THE PROJECT.

6. MAINTENANCE OF EROSION CONTROL PRACTICES

THE CONTRACTOR SHALL BE RESPONSIBLE FOR INSPECTION AND MAINTENANCE OF EROSION CONTROL PRACTICES. PRIOR TO COMMENCING WORK, THE CONTRACTOR SHALL DESIGNATE A CONTACT PERSON FOR MAINTENANCE FOR ENSURING ALL VEGETATION, EROSION AND SEDIMENT CONTROL MEASURES AND OTHER PROTECTIVE MEASURES IDENTIFIED IN THIS PLAN ARE KEPT IN GOOD AND EFFECTIVE OPERATING CONDITIONS.

THE PROCEDURES SET FORTH IN THE ILLINOIS URBAN MANUAL SHALL BE FOLLOWED WHERE APPLICABLE. IF NOT, APPLICABLE PROCEDURES SHALL BE FOLLOWED IN ACCORDANCE WITH MANUFACTURERS STANDARDS.

CONSTRUCTION SEQUENCE

1. INSTALL EROSION CONTROL
2. STORM SEWER / CULVERTS
3. CONSTRUCTION OF SIDEWALK
4. RESTORATION

INSPECTIONS

QUALIFIED PERSONNEL SHALL INSPECT DISTURBED AREAS OF THE CONSTRUCTION SITE, WHICH HAVE NOT BEEN FINALLY STABILIZED, STRUCTURAL CONTROL MEASURES AND LOCATIONS WHERE VEHICLES ENTER OR EXIT THE SITE. SUCH INSPECTIONS SHALL BE CONDUCTED AT LEAST ONCE EVERY SEVEN (7) CALENDAR DAYS AND WITHIN 24 HOURS OF THE END OF A STORM THAT IS 0.5 INCHES OR GREATER (OR EQUIVALENT SNOWFALL).

- A. DISTURBED AREAS AND AREAS USED FOR STORAGE OF MATERIALS THAT ARE EXPOSED TO PRECIPITATION SHALL BE INSPECTED FOR EVIDENCE OF, OR THE POTENTIAL FOR, POLLUTANTS ENTERING THE DRAINAGE SYSTEM. EROSION AND SEDIMENT CONTROL MEASURES IDENTIFIED IN THE IMPROVEMENT PLANS SHALL BE OBSERVED TO ENSURE THEY ARE OPERATING CORRECTLY. WHERE DISCHARGE LOCATIONS OR POINTS ARE ACCESSIBLE, THEY SHALL BE INSPECTED TO ASCERTAIN WHETHER EROSION CONTROL MEASURES ARE EFFECTIVE IN PREVENTING SIGNIFICANT IMPACTS TO RECEIVING WATERS. LOCATIONS WHERE VEHICLES ENTER OR EXIT THE SITE SHALL BE INSPECTED FOR EVIDENCE OF OFF-SITE SEDIMENT TRACKING.
- B. BASED ON THE RESULTS OF THE INSPECTION, THE DESCRIPTION OF POTENTIAL POLLUTANT SOURCES IDENTIFIED IN THE PROJECT DESCRIPTION AND POLLUTION PREVENTION MEASURES IDENTIFIED UNDER EROSION AND SEDIMENT CONTROLS SHALL BE REVISED AS APPROPRIATE AS SOON AS PRACTICABLE AFTER SUCH INSPECTION. ANY CHANGES TO THIS PLAN RESULTING FROM THE REQUIRED INSPECTIONS SHALL BE IMPLEMENTED WITHIN SEVEN (7) CALENDAR DAYS FOLLOWING THE INSPECTION.
- C. A REPORT SUMMARIZING THE SCOPE OF THE INSPECTION, NAME(S) AND QUALIFICATIONS OF PERSONNEL MAKING THE INSPECTION, DATE(S) OF THE INSPECTION(S), MAJOR OBSERVATIONS RELATING TO THE IMPLEMENTATION OF THIS STORMWATER POLLUTION PREVENTION PLAN AND ACTIONS TAKEN IN ACCORDANCE WITH THE ABOVE SECTION B SHALL BE MADE AND RETAINED AS PART OF THE PLAN FOR AT LEAST THREE (3) YEARS AFTER THE DATE OF THE INSPECTION. THE REPORT SHALL BE SIGNED IN ACCORDANCE WITH PART VI. G OF THE GENERAL PERMIT.
- D. IF ANY VIOLATION OF THE PROVISIONS OF THIS PLAN IS IDENTIFIED DURING THE CONDUCT OF THE CONSTRUCTION WORK COVERED BY THIS PLAN, THE INSPECTOR SHALL COMPLETE AND FILE AN "INCIDENCE OF NONCOMPLIANCE" (ION) REPORT FOR THE IDENTIFIED VIOLATION. THE RESIDENT ENGINEER OR RESIDENT TECHNICIAN SHALL USE FORMS PROVIDED BY THE ILLINOIS ENVIRONMENTAL PROTECTION AGENCY AND SHALL INCLUDE SPECIFIC INFORMATION ON THE CAUSE OF THE NONCOMPLIANCE, ACTIONS TAKEN TO PREVENT ANY FURTHER CAUSES OF NONCOMPLIANCE AND A STATEMENT DETAILING ANY ENVIRONMENTAL IMPACT WHICH MAY HAVE RESULTED FROM THE NONCOMPLIANCE. ALL REPORTS OF NONCOMPLIANCE SHALL BE SIGNED BY A RESPONSIBLE AUTHORITY IN ACCORDANCE WITH PART VI. G OF THE GENERAL PERMIT.

THE REPORT OF NONCOMPLIANCE SHALL BE MAILED TO THE FOLLOWING ADDRESS:

ILLINOIS ENVIRONMENTAL PROTECTION AGENCY
DIVISION OF WATER POLLUTION CONTROL
ATTN: COMPLIANCE ASSURANCE SECTION
1021 NORTH GRAND EAST
POST OFFICE BOX 19276
SPRINGFIELD, ILLINOIS 62794-9276

(WITH COPIES SENT TO THE OWNER AND ENGINEER)

DESCRIPTION OF STORMWATER MANAGEMENT CONTROLS

1. INSTALL PERIMETER EROSION BARRIER AS INDICATED ON THE LANDSCAPING AND EROSION CONTROL PLAN.
2. AFTER CONSTRUCTION OF THE PROPOSED STORM SEWERS AND CULVERTS, PLACE INLET FILTERS PER THE DETAIL ON THE PLANS OR APPROVED EQUAL IN ALL STORM STRUCTURES ACCEPTING SURFACE FLOW OUTSIDE OF PAVED AREAS.
3. INSTALL PERMANENT EROSION CONTROL MEASURES SEED AND BLANKET AS SHOWN ON THE LANDSCAPING AND EROSION CONTROL PLAN.

STABILIZATION PRACTICES

THIS SECTION OF THE PLAN ADDRESSES THE VARIOUS CONTROLS THAT WILL BE IMPLEMENTED FOR EACH OF THE MAJOR CONSTRUCTION ACTIVITIES DESCRIBED. FOR EACH MEASURE DISCUSSED, THE CONTRACTOR THAT WILL BE RESPONSIBLE FOR ITS IMPLEMENTATION IS INDICATED. EACH SUCH CONTRACTOR SHALL SIGN THE REQUIRED CERTIFICATION ON FORMS WHICH ARE PART OF THIS PLAN.

1. INSTALL ONSITE SEDIMENT CONTROL MEASURES AS SHOWN ON THE IMPROVEMENT PLANS PRIOR TO INITIATING CONSTRUCTION.
2. STABILIZATION OF DISTURBED AREAS MUST BE INITIATED WITHIN ONE (1) WORKING DAY OF PERMANENT OR TEMPORARY CESSATION OF EARTH DISTURBING ACTIVITIES AND SHALL BE COMPLETED AS SOON AS POSSIBLE BUT NOT LATER THAN 14 DAYS FROM THE INITIATION OF THE STABILIZATION WORK IN AN AREA.
3. TEMPORARY SEED MIXTURE SHALL BE APPLIED AT 100 LBS/ ACRE OR 150 LBS/ ACRE DEPENDING ON THE SEED MIXTURE USED.
4. TOPSOIL STOCKPILES SHALL BE SEEDS WITHIN ONE (1) WORKING DAY OF PERMANENT OR TEMPORARY CESSATION OF EARTH DISTURBING ACTIVITIES AND SHALL BE COMPLETED AS SOON AS POSSIBLE BUT NOT LATER THAN 14 DAYS FROM THE INITIATION OF THE STABILIZATION WORK IN AN AREA. ALL SOIL STORAGE PILES SHALL BE PROTECTED FROM EROSION WITH SILT FENCE ON THE DOWNSLOPE SIDE OF THE PILES.
5. WATER PUMPED DURING CONSTRUCTION OPERATION SHALL BE FILTERED.
6. DUST CONTROL SHALL BE PERFORMED ON A DAILY BASIS USING WATER DISPERSED FROM TRUCK MOUNTED TANK WITH STANDARD DISCHARGE HEADER TO PROVIDE A UNIFORM RATE OF APPLICATION.
7. PREVENT SEDIMENT FROM BEING TRACKED ONTO PUBLIC ROADWAYS. ANY SEDIMENT REACHING A PUBLIC ROAD SHALL BE REMOVED BY SHOVELING OR STREET CLEANING BEFORE THE END OF EACH WORKING DAY.
8. ALL TEMPORARY AND PERMANENT EROSION CONTROL MEASURES MUST BE MAINTAINED AND REPAIRED AS NEEDED TO ASSURE EFFECTIVE PERFORMANCE.
9. ADDITIONAL EROSION CONTROL MEASURES MAY BE REQUIRED BY THE MUNICIPALITY AS CONSTRUCTION PROGRESSES.
10. ALL EROSION AND SEDIMENTATION CONTROL MEASURES SHALL BE REMOVED AND DISPOSED OF WITHIN 30 DAYS OF FINAL STABILIZATION.
11. ALL EROSION AND SEDIMENTATION CONTROL SHALL BE IN ACCORDANCE WITH IDOT AND THE VILLAGE OF MONEE ORDINANCES.
12. SPECIFIC EROSION CONTROLS ARE SHOWN ON THE LANDSCAPING AND EROSION CONTROL PLAN IN THIS SET.

NON-STORMWATER DISCHARGES

EXCEPT FOR FLOWS FROM FIRE FIGHTING ACTIVITIES, SOURCES OF NON-STORMWATER THAT IS COMBINED WITH STORMWATER DISCHARGES ASSOCIATED WITH THE CONSTRUCTION ADDRESSED IN THIS PLAN MUST BE DESCRIBED BELOW. APPROPRIATE POLLUTION PREVENTION MEASURES, AS DESCRIBED BELOW, WILL BE IMPLEMENTED FOR THE NON-STORMWATER COMPONENT(S) OF THE DISCHARGE.

- WATERMAIN FLUSHING
- FIRE HYDRANT FLUSHING
- GROUNDWATER (TRENCH DE-WATERING WATER)
- WATERING FOR DUST CONTROL
- DRAINAGE FOR VEGETATIVE GROWTH

APPROVED STATE OR LOCAL PLANS

THE MANAGEMENT PRACTICES, CONTROLS AND PROVISIONS CONTAINED IN THIS PLAN WILL BE IN ACCORDANCE WITH IDOT SPECIFICATIONS, WHICH ARE AT LEAST AS PROTECTIVE AS THE REQUIREMENTS CONTAINED IN THE ILLINOIS ENVIRONMENTAL PROTECTION AGENCY'S ILLINOIS URBAN MANUAL, LATEST EDITION. REQUIREMENTS SPECIFIED IN THE SWPPP, OR SITE PERMITS APPROVED BY LOCAL OFFICIALS THAT ARE APPLICABLE TO PROTECTING SURFACE WATER RESOURCES ARE TO BE AUTHORIZED TO DISCHARGE UNDER PERMITS ILR10 INCORPORATED BY REFERENCE AND ARE ENFORCEABLE UNDER THIS PERMIT EVEN IF THEY ARE NOT SPECIFICALLY INCLUDED IN THE PLAN.

EROSION CONTROL NOTES

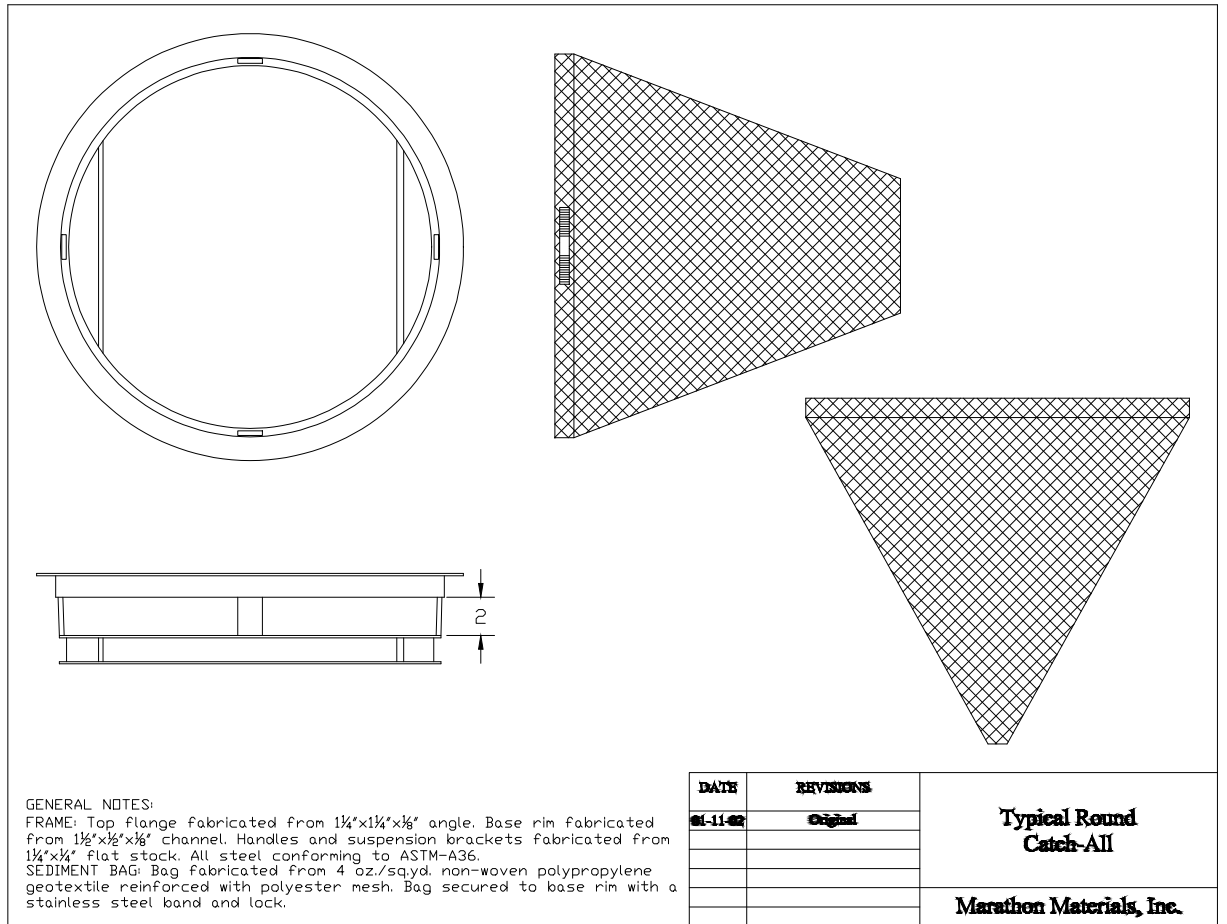
THE CONTRACTOR SHALL TAKE THE NECESSARY STEPS TO CONTROL WASTE SUCH AS DISCARDED CONSTRUCTION MATERIALS, CONCRETE TRUCK WASHOUT, CHEMICALS, LITTER AND SANITARY WASTE AT THE CONSTRUCTION SITE THAT MAY CAUSE ADVERSE IMPACTS TO WATER QUALITY.

ALL EROSION CONTROL PRACTICES SHALL BE INSTALLED PRIOR TO THE START OF CONSTRUCTION.

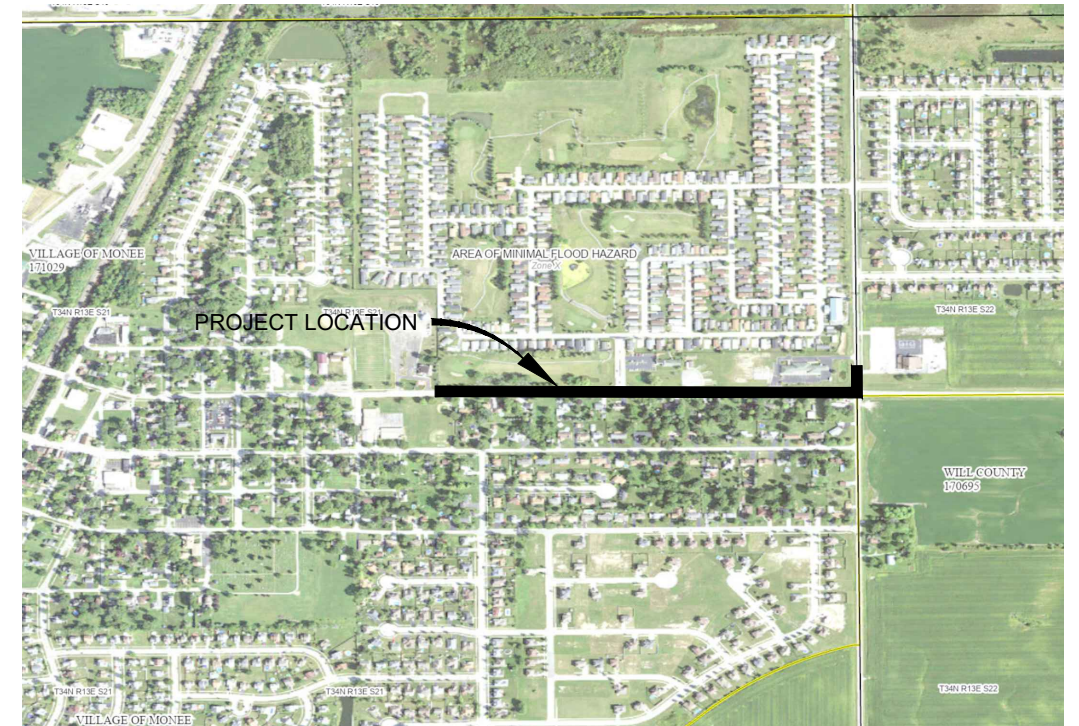
ANY OBSERVED DISRUPTION TO THE EROSION CONTROL PRACTICES SHALL BE IMMEDIATELY REPAIRED BY THE CONTRACTOR.

ANY DUST OR MUD TRACKED ONTO STREETS SHALL BE CLEANED AT THE END OF EACH WORKING DAY.

STABILIZATION OF DISTURBED AREAS MUST BE INITIATED WITHIN ONE (1) WORKING DAY OF PERMANENT OR TEMPORARY CESSATION OF EARTH DISTURBING ACTIVITIES AND SHALL BE COMPLETED AS SOON AS POSSIBLE BUT NOT LATER THAN 14 DAYS FROM THE INITIATION OF THE STABILIZATION WORK IN AN AREA.



GENERAL NOTES:
FRAME: Top flange fabricated from 1 1/4"x1 1/4"x3/8" angle. Base rim fabricated from 1 1/2"x1/2"x3/8" channel. Handles and suspension brackets fabricated from 1 1/4"x3/4" flat stock. All steel conforming to ASTM-A36.
SEDIMENT BAG: Bag fabricated from 4 oz./sqyd. non-woven polypropylene geotextile reinforced with polyester mesh. Bag secured to base rim with a stainless steel band and lock.



VILLAGE OF MONEE

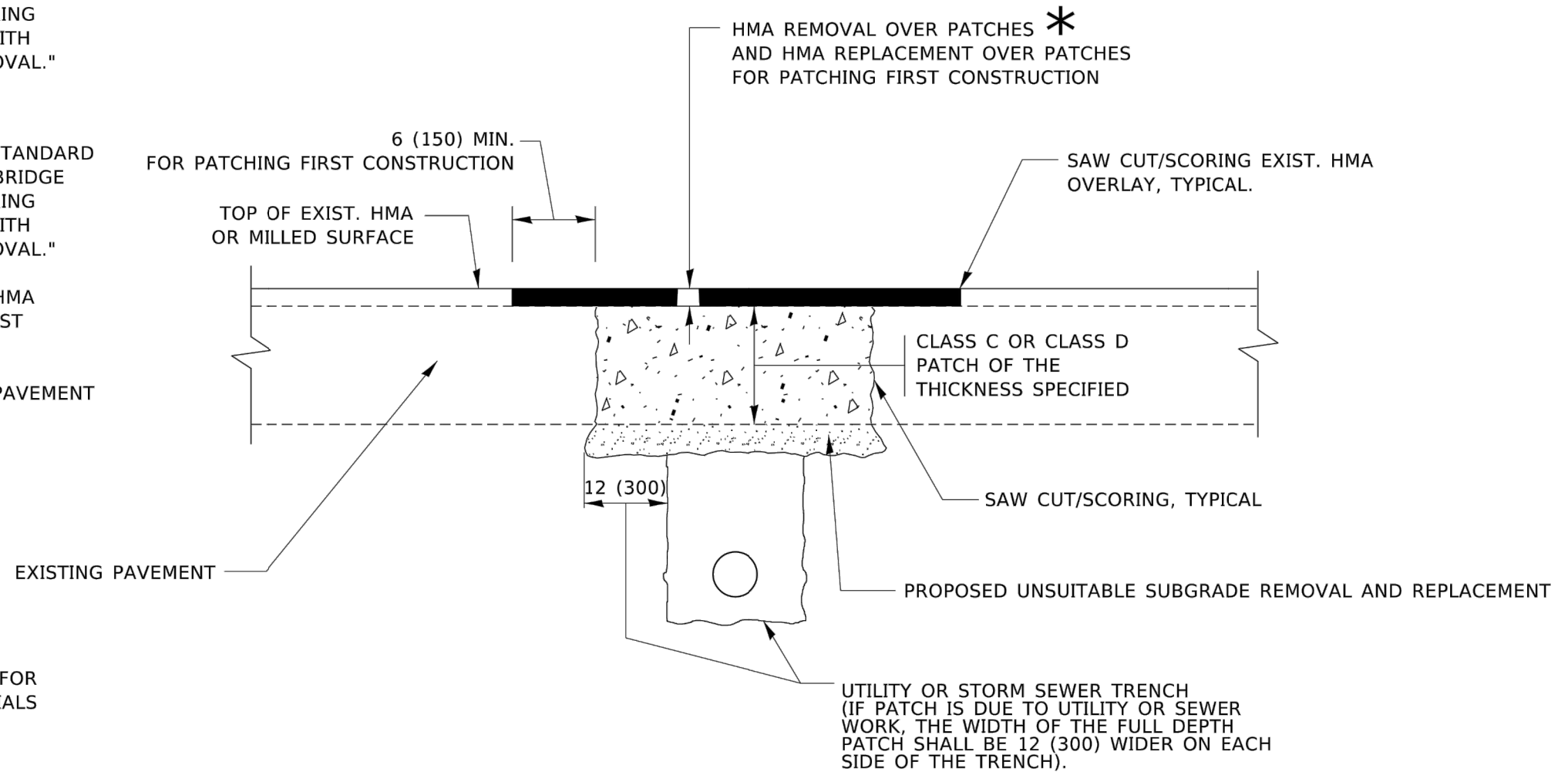
FILE NAME = 22R0783-SWPP-01 - P01	USER NAME =	DESIGNED -- JR	REVISED --	STATE OF ILLINOIS DEPARTMENT OF TRANSPORTATION	COURT STREET SIDEWALKS STORM WATER POLLUTION PREVENTION PLAN	F.A.U. RTE.	SECTION	COUNTY	TOTAL SHEETS	SHEET NO.	
		CHECKED -- JR	REVISED --			1654	22-00034-00-SW	WILL	28	13	
	PLOT SCALE =	DRAWN -- KWM	REVISED --			CONTRACT NO. 61K17					
	PLOT DATE = 09-29-23	CHECKED -- AG	REVISED --			FED. ROAD DIST. NO. 1	ILLINOIS	FED. AID PROJECT	J6ED(234)		
					SCALE: NONE	SHEET NO. 13 OF 28 SHEETS	STA. TO STA.				

METHOD OF MEASUREMENT

REFER TO SECTION 442 OF THE STANDARD SPECIFICATIONS FOR ROAD AND BRIDGE CONSTRUCTION AND THE RECURRING SPECIAL PROVISION "PATCHING WITH HOT-MIX ASPHALT OVERLAY REMOVAL."

BASIS OF PAYMENT

1. REFER TO SECTION 442 OF THE STANDARD SPECIFICATIONS FOR ROAD AND BRIDGE CONSTRUCTION AND THE RECURRING SPECIAL PROVISION "PATCHING WITH HOT-MIX ASPHALT OVERLAY REMOVAL."
2. SAW CUT/SCORING OF EXISTING HMA OVERLAY IS INCLUDED IN THE COST OF PAVEMENT PATCHING.
3. SAW CUT/SCORING OF EXISTING PAVEMENT IS INCLUDED IN THE COST OF PAVEMENT PATCHING.



SEQUENCE OF CONSTRUCTION (PATCHING FIRST)

1. REMOVE THE EXISTING HMA MATERIAL OVER THE AREA TO BE PATCHED.
2. REMOVE AND REPLACE WITH CLASS C OR D PATCH.
3. REPLACE HMA MATERIAL OVER THE AREA TO BE PATCHED.

SEQUENCE OF CONSTRUCTION (MILLING FIRST)

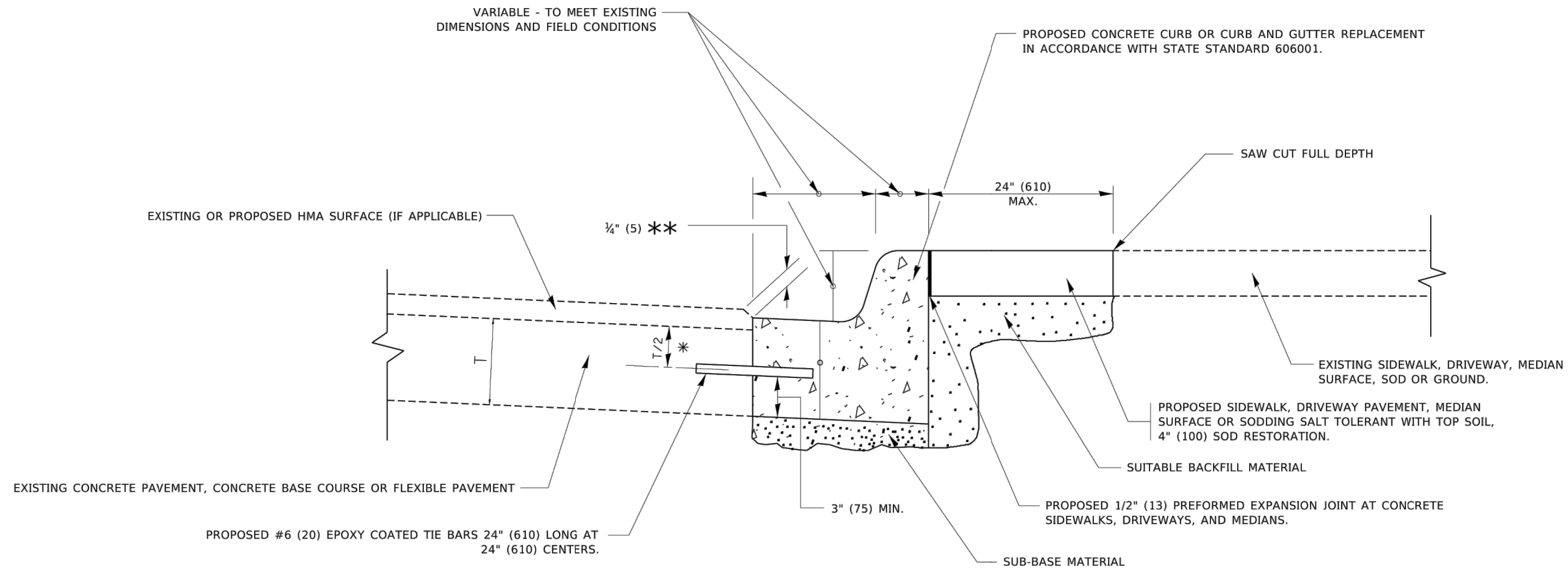
1. MILL HMA FIRST IF THERE IS AT LEAST 4½ INCHES OR MORE OF HMA MATERIAL ON TOP OF THE EXISTING PAVEMENT OR IF THE PAVEMENT IS FULL DEPTH HMA. A MINIMUM OF 2 INCHES OF HMA MATERIAL SHALL BE IN PLACE AFTER MILLING.
2. REMOVE AND REPLACE WITH FULL DEPTH CLASS D PATCHES TO TOP OF MILLED SURFACE.

ALL DIMENSIONS ARE IN INCHES (MILLIMETERS) UNLESS OTHERWISE SHOWN.

FILE NAME: p:\work\paw_bentley.com\paw\DOT\Documents\DOT_Offices\District 1\Projects\Dissemination\CAD\Business\bd22.dgn

USER NAME = Lawrence.DeManche	DESIGNED - R. SHAH	REVISED - R. BORO 01-01-07	STATE OF ILLINOIS DEPARTMENT OF TRANSPORTATION	PAVEMENT PATCHING FOR HMA SURFACED PAVEMENT	F.A. RTE.	SECTION	COUNTY	TOTAL SHEETS	SHEET NO.		
PLOT SCALE = 100.0000' / in.	DRAWN -	REVISED - R. BORO 09-04-07			SCALE: NONE	SHEET 1 OF 1 SHEETS	STA. TO STA.	BD400-04 (BD-22) CONTRACT NO.			
PLOT DATE = 11/18/2022	CHECKED -	REVISED - K. ENG 10-27-08			ILLINOIS FED. AID PROJECT						
	DATE - 10-25-94	REVISED - K. SMITH 11-18-22									

FILE NAME = 22R0783-DTSL-01 - BD22	USER NAME =	DESIGNED --	REVISED --	STATE OF ILLINOIS DEPARTMENT OF TRANSPORTATION	DISTRICT 1 DETAILS	F.A.U. RTE.	SECTION	COUNTY	TOTAL SHEETS	SHEET NO.		
	CHECKED --	REVISED --	SCALE:			SHEET NO. 14 OF 28 SHEETS	STA. TO STA.	1654	22-00034-00-SW	WILL	28	14
	PLOT SCALE =	DRAWN --	REVISED --			CONTRACT NO. 61K17						
	PLOT DATE =	CHECKED --	REVISED --			FED. ROAD DIST. NO. 1 ILLINOIS FED. AID PROJECT J6ED(234)						



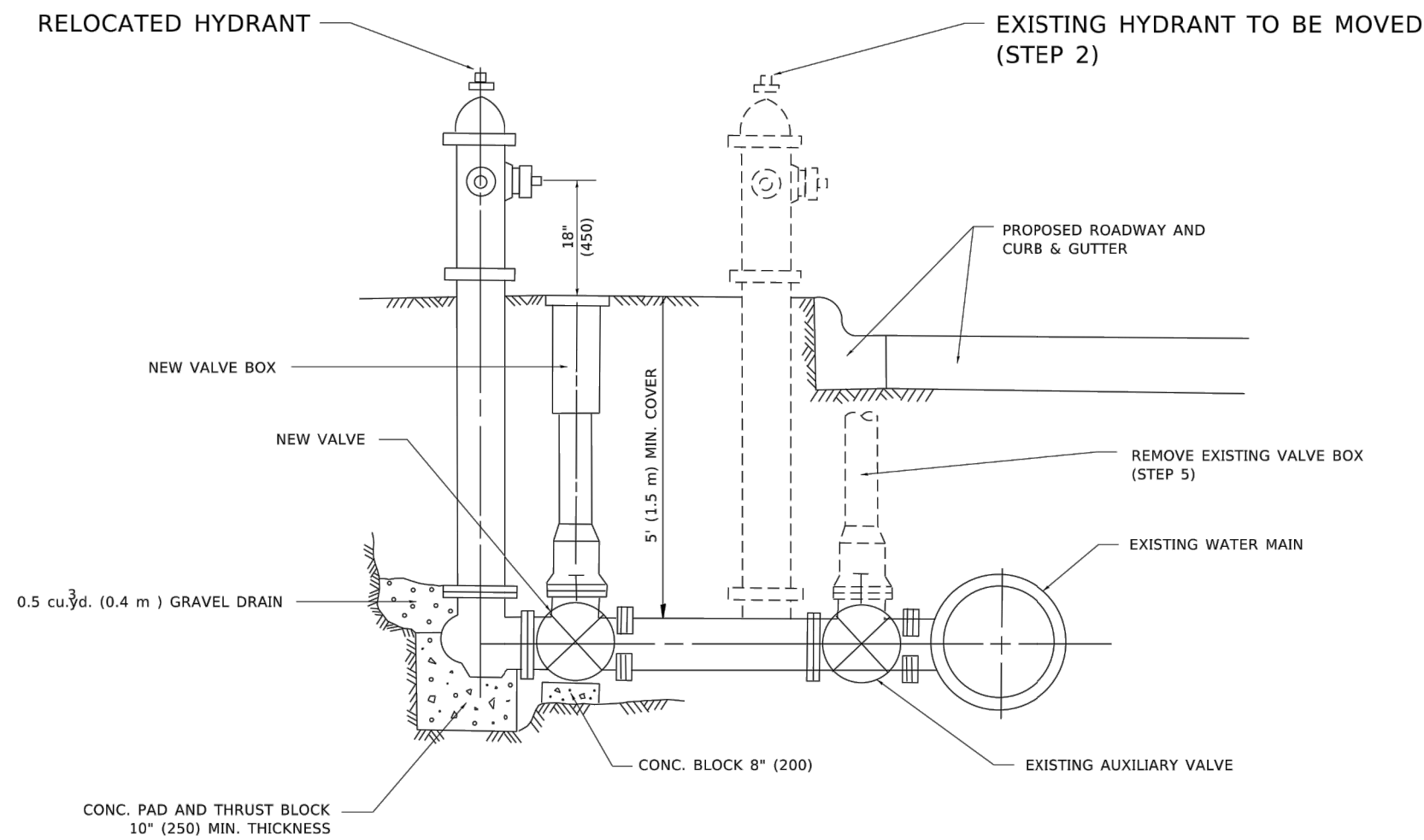
- * 3" (75) MINIMUM FROM TOP AND BOTTOM OF THE CONCRETE PAVEMENT OR BASE COURSE.
- ** IF THE FINAL SURFACE OF THE PAVEMENT IS CONCRETE, THE GUTTER IS TO BE FLUSH WITH THE PAVEMENT.

CURB OR CURB AND GUTTER REMOVAL AND REPLACEMENT

ALL DIMENSIONS ARE IN INCHES (MILLIMETERS)
UNLESS OTHERWISE SHOWN.

USER NAME = footemj	DESIGNED - A. HOUSEH	REVISED - A. ABBAS 03-21-97	STATE OF ILLINOIS DEPARTMENT OF TRANSPORTATION	CURB OR CURB AND GUTTER REMOVAL AND REPLACEMENT	SCALE: NONE	SHEET 1 OF 1 SHEETS	STA. TO STA.	F.A. RTE.	SECTION	COUNTY	TOTAL SHEETS	SHEET NO.
PLOT SCALE = 50.0000' / in.	CHECKED -	REVISED - R. BORO 12-15-09			BD600-06 (BD-24)	CONTRACT NO.		ILLINOIS		FED. AID PROJECT		
PLOT DATE = 7/11/2019	DATE - 03-11-94	REVISED - K. SMITH 07-11-19										

FILE NAME = 22R0783-DTSL-01 - BD24	USER NAME =	DESIGNED --	REVISED --	STATE OF ILLINOIS DEPARTMENT OF TRANSPORTATION	DISTRICT 1 DETAILS	SCALE:	SHEET NO. 15 OF 28 SHEETS	STA. TO STA.	F.A.U. RTE.	SECTION	COUNTY	TOTAL SHEETS	SHEET NO.
		CHECKED --	REVISED --			1654	22-00034-00-SW	WILL	28	15	CONTRACT NO. 61K17		
		DRAWN --	REVISED --			ILLINOIS		FED. AID PROJECT		J6ED(234)			
		CHECKED --	REVISED --										



SEQUENCE OF CONSTRUCTION:

1. CLOSE EXISTING VALVE.
2. REMOVE EXISTING HYDRANT.
3. INSTALL HYDRANT EXTENSION AND NEW VALVE.
4. RELOCATE EXISTING HYDRANT.
5. OPEN EXISTING VALVE, REMOVE BOX.
6. BACKFILL.
7. FLUSH AND TEST FOR CHLORIDE RESIDUAL AND PROVIDE TEST.

NOTE:

ALL WORK TO BE DONE IN ACCORDANCE WITH SECTION 564 OF THE STANDARD SPECIFICATIONS. NEW VALVE AND BOX SHALL BE SAME MAKE AND MODEL AS EXISTING.

FIRE HYDRANT TO BE MOVED

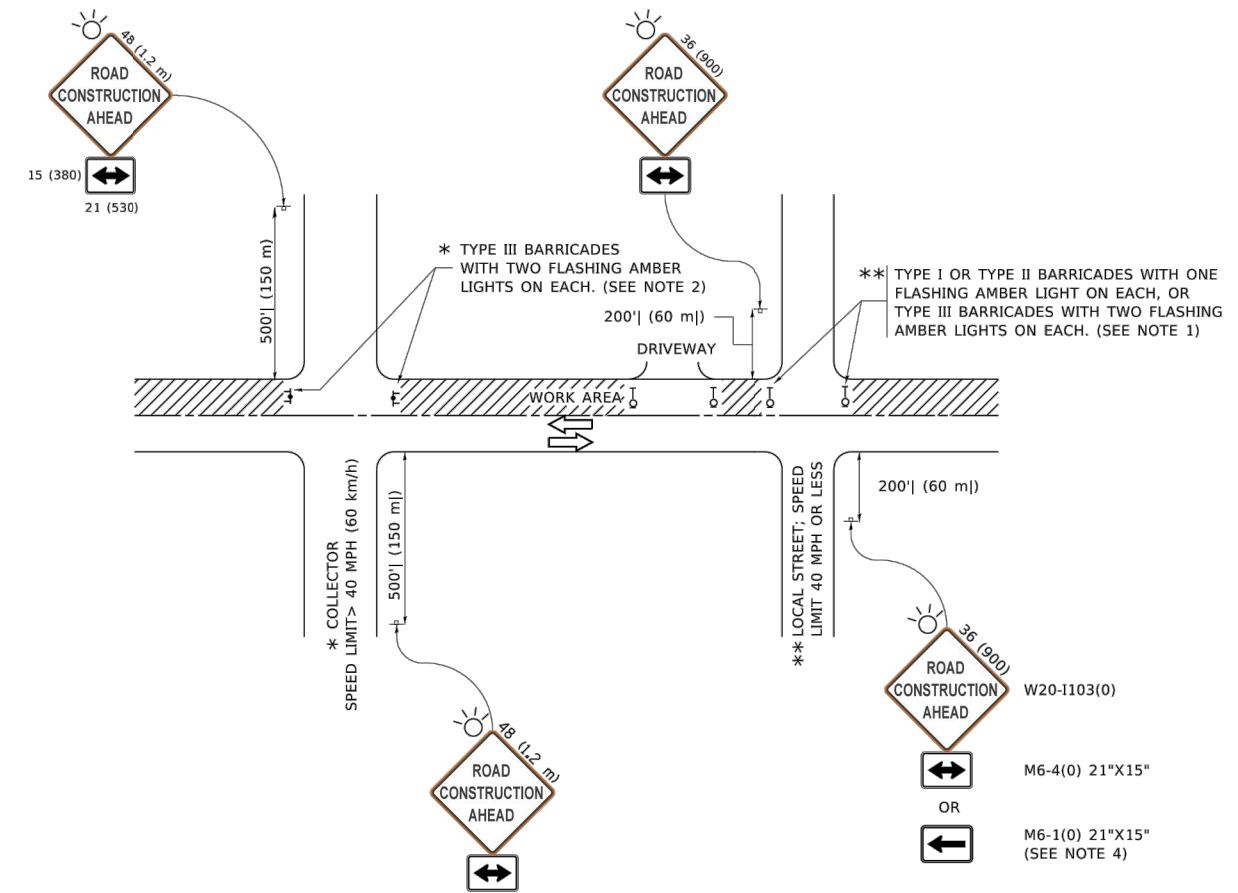
ALL DIMENSIONS ARE IN INCHES (MILLIMETERS) UNLESS OTHERWISE SHOWN.

USER NAME = Lawrence.DeManche PLOT SCALE = 100.0000' / in. PLOT DATE = 11/18/2022	DESIGNED - DRAWN - CHECKED - DATE -	REVISED - R. SHAH 09-09-94 REVISED - R. SHAH 10-25-94 REVISED - K. SMITH 11-18-22 REVISED -	STATE OF ILLINOIS DEPARTMENT OF TRANSPORTATION	FIRE HYDRANT TO BE MOVED	F.A. RTE. SECTION COUNTY TOTAL SHEETS SHEET NO.
			SCALE: NONE SHEET 1 OF 1 SHEETS STA. TO STA.	BD-36 CONTRACT NO.	ILLINOIS FED. AID PROJECT

FILE NAME = 22R0783-DTSL-01 - BD36 USER NAME = PLOT SCALE = PLOT DATE =	DESIGNED -- CHECKED -- DRAWN -- CHECKED --	REVISED -- REVISED -- REVISED -- REVISED --	STATE OF ILLINOIS DEPARTMENT OF TRANSPORTATION	DISTRICT 1 DETAILS	F.A.U. RTE. SECTION COUNTY TOTAL SHEETS SHEET NO.
			SCALE: SHEET NO. 16 OF 28 SHEETS STA. TO STA.	1654 22-00034-00-SW WILL 28 16	FED. ROAD DIST. NO. 1 ILLINOIS FED. AID PROJECT J6ED(234)

FILE NAME: p:\u0000-00-bentley.com\p\1107\Documents\DOT Offices\District 1\Projects\Dis5622a31\CAD\Drawn\CAD\Sheet\016.dgn

FILE NAME: P:\11\0848\BID\NTEC\Illinois\gov\PM\DOT\Documents\DOT_Offices\District_1\Projects\01585922-24\CAD\Drawn\CAD\Sheet\TC10.dgn



NOTES:

1. SIDE ROAD WITH A SPEED LIMIT OF 40 MPH (60 km/h) OR LESS AS SHOWN ON THE DRAWING AND AS DIRECTED BY THE ENGINEER:
 - a) ONE "ROAD CONSTRUCTION AHEAD" SIGN 36 x 36 (900x900) WITH A FLASHER MOUNTED ON IT APPROXIMATELY 200' (60 m) IN ADVANCE OF THE MAIN ROUTE.
 - b) THE CLOSED PORTION OF THE MAIN ROUTE SHALL BE PROTECTED BY BLOCKING WITH TYPE I, TYPE II OR TYPE III BARRICADES, 1/3 OF THE CROSS SECTION OF THE CLOSED PORTION.
2. SIDE ROAD WITH A SPEED LIMIT GREATER THAN 40 MPH (60 km/h) AS SHOWN ON THE DRAWING AND AS DIRECTED BY THE ENGINEER:
 - a) ONE "ROAD CONSTRUCTION AHEAD" SIGN 48 x 48 (1.2 m x 1.2 m) WITH A FLASHER MOUNTED ON IT APPROXIMATELY 500' (150 m) IN ADVANCE OF THE MAIN ROUTE.
 - b) THE CLOSED PORTION OF THE MAIN ROUTE SHALL BE PROTECTED BY BLOCKING WITH TYPE III BARRICADES, 1/2 OF THE CROSS SECTION OF THE CLOSED PORTION.
3. CONES MAY BE SUBSTITUTED FOR BARRICADES OR DRUMS AT HALF THE SPACING DURING DAY OPERATIONS. CONES SHALL BE A MINIMUM OF 28 (710) IN HEIGHT.
4. SIGNING AND THE WORK ZONE, A SINGLE HEADED ARROW (M6-1) SHALL BE USED IN LIEU OF THE DOUBLE HEADED ARROW (M6-4).
5. WHEN WORK IS BEING PERFORMED ON A SIDE ROAD OR DRIVEWAY, FOLLOW THE APPLICABLE STANDARD(S). THE DIRECTIONAL ARROW (M6-1 OR M6-4) SHALL BE COVERED OR REMOVED WHEN NO LONGER CONSISTENT WITH THE TRAFFIC CONTROL SET-UP.
6. ADVANCE WARNING SIGNS ARE TO BE OMITTED ON DRIVEWAYS UNLESS OTHERWISE SPECIFIED IN THE PLANS OR BY THE ENGINEER.
7. THE TRAFFIC CONTROL AND PROTECTION FOR SIDE ROADS, INTERSECTIONS, AND DRIVEWAYS SHALL BE INCLUDED IN THE COST OF SPECIFIED TRAFFIC CONTROL STANDARDS OR ITEMS.

All dimensions are in inches (millimeters) unless otherwise shown.

USER NAME = footermj	DESIGNED - L.H.A.	REVISED - A. HOUSEH 10-15-96
PLOT SCALE = 50.0000' / in.	CHECKED -	REVISED - T. RAMMACHER 01-06-00
PLOT DATE = 3/4/2019	DATE - 06-89	REVISED - A. SCHUETZE 07-01-13
		REVISED - A. SCHUETZE 09-15-16

**STATE OF ILLINOIS
DEPARTMENT OF TRANSPORTATION**

**TRAFFIC CONTROL AND PROTECTION FOR
SIDE ROADS, INTERSECTIONS, AND DRIVEWAYS**

F.A.U. RTE.	SECTION	COUNTY	TOTAL SHEETS	SHEET NO.
TC-10			CONTRACT NO.	
ILLINOIS FED. AID PROJECT				

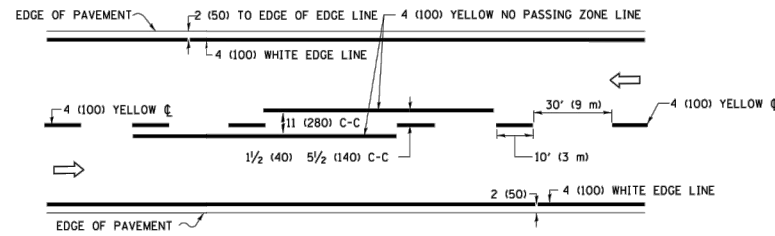
FILE NAME = 22R0783-DTLS-01 - TC10

USER NAME =	DESIGNED --	REVISED --
	CHECKED --	REVISED --
PLOT SCALE =	DRAWN --	REVISED --
PLOT DATE =	CHECKED --	REVISED --

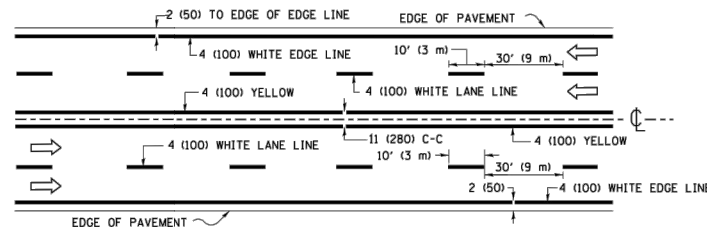
**STATE OF ILLINOIS
DEPARTMENT OF TRANSPORTATION**

DISTRICT 1 DETAILS

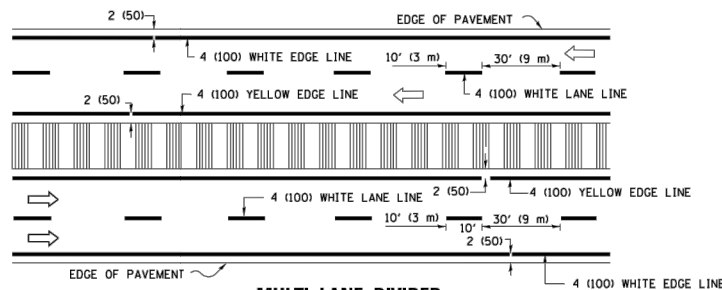
F.A.U. RTE.	SECTION	COUNTY	TOTAL SHEETS	SHEET NO.
1654	22-00034-00-SW	WILL	28	17
CONTRACT NO. 61K17				
FED. ROAD DIST. NO. 1 ILLINOIS FED. AID PROJECT J6ED(234)				



2-LANE ROADWAY

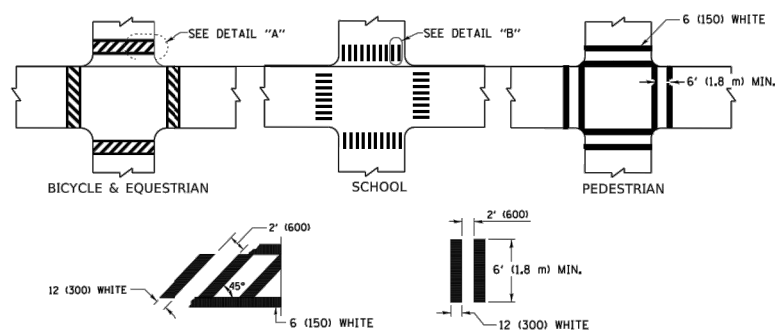


MULTI-LANE UNDIVIDED



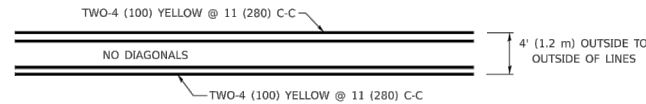
MULTI-LANE DIVIDED WITH MEDIAN

TYPICAL LANE AND EDGE LINE MARKING

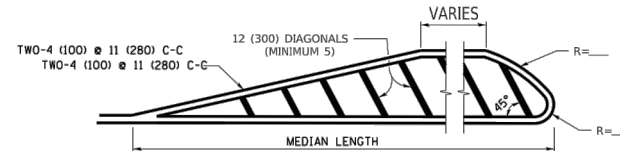


TYPICAL CROSSWALK MARKING

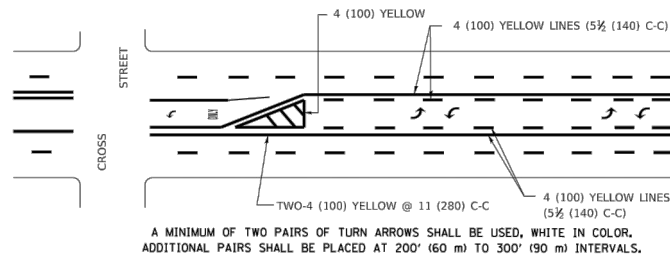
* MARKINGS SHALL BE INSTALLED PARALLEL TO THE CENTERLINE OF THE ROAD WHICH IT CROSSES



4' (1.2 m) WIDE MEDIANS ONLY

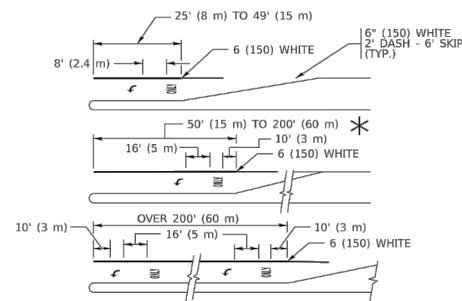


MEDIANS OVER 4' (1.2 m) WIDE



MEDIAN WITH TWO-WAY LEFT TURN LANE

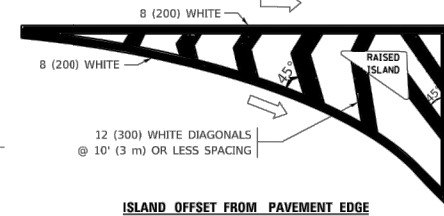
TYPICAL PAINTED MEDIAN MARKING



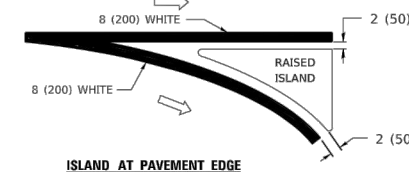
TYPICAL LEFT (OR RIGHT) TURN LANE

TYPICAL TURN LANE MARKING

FULL SIZE LETTERS 8' (2.4 m) AND ARROWS SHALL BE USED.
 * TURN LANES IN EXCESS OF 400' (120 m) IN LENGTH MAY HAVE AN ADDITIONAL SET OF ARROW - "ONLY" INSTALLED MIDWAY BETWEEN THE OTHER TWO SETS OF ARROW - "ONLY".

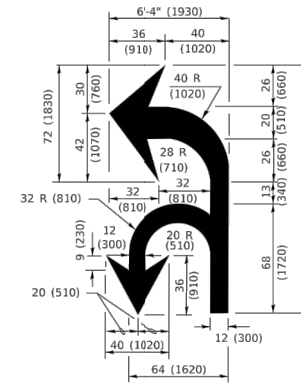


ISLAND OFFSET FROM PAVEMENT EDGE

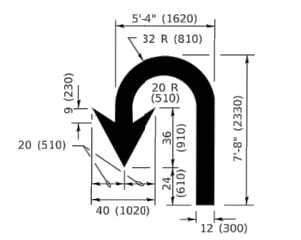


ISLAND AT PAVEMENT EDGE

TYPICAL ISLAND MARKING



COMBINATION LEFT AND U-TURN



U-TURN

LANE REDUCTION TRANSITION

* LANE REDUCTION ARROWS REQUIRED AT SPEEDS OF 45 MPH OR GREATER OR WHEN SPECIFIED IN PLANS.

D(FT)	SPEED LIMIT
345	30
425	35
500	40
580	45
665	50
750	55

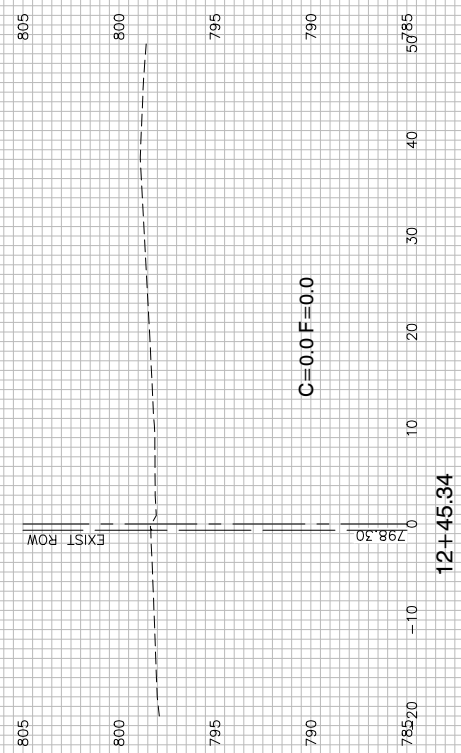
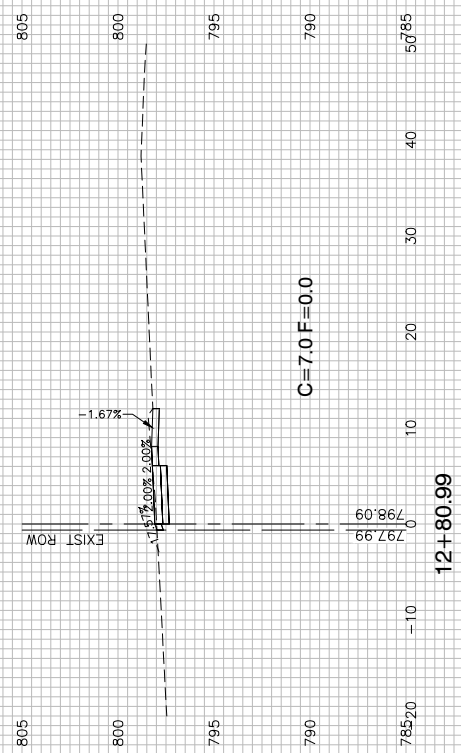
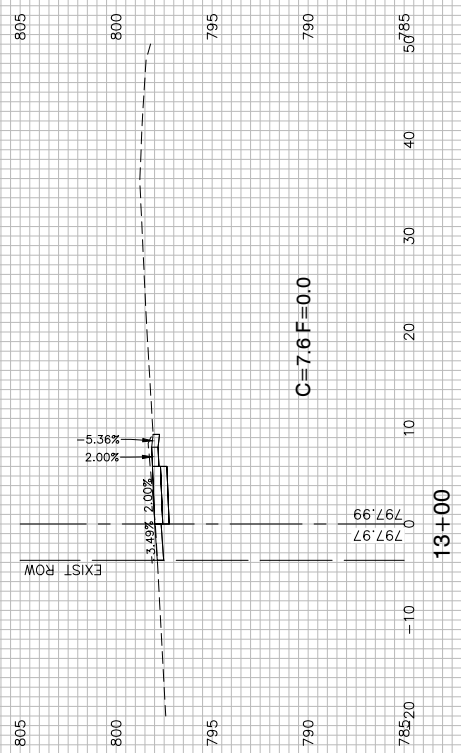
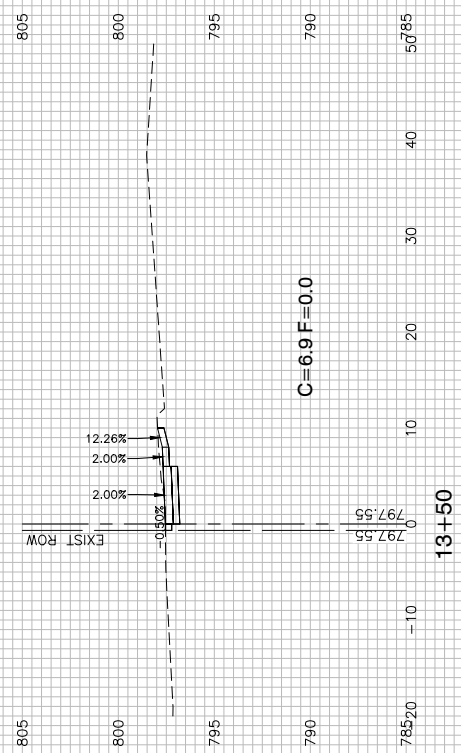
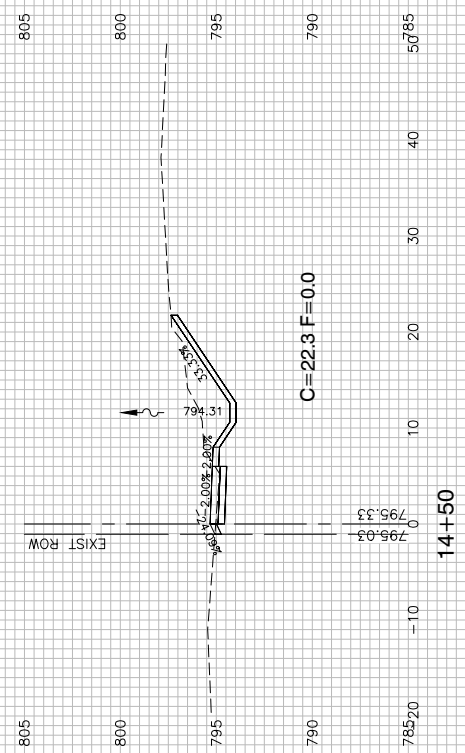
TYPE OF MARKING	WIDTH OF LINE	PATTERN	COLOR	SPACING / REMARKS
CENTERLINE ON 2 LANE PAVEMENT	4 (100)	SKIP-DASH	YELLOW	10' (3 m) LINE WITH 30' (9 m) SPACE
CENTERLINE ON MULTI-LANE UNDIVIDED PAVEMENT	2 @ 4 (100)	SOLID	YELLOW	11 (280) C-C
NO PASSING ZONE LINES: FOR ONE DIRECTION FOR BOTH DIRECTIONS	4 (100) 2 @ 4 (100)	SOLID SOLID	YELLOW YELLOW	5 1/2 (140) C-C FROM SKIP-DASH CENTERLINE 11 (280) C-C OMIT SKIP-DASH CENTERLINE BETWEEN
LANE LINES	4 (100) 5 (125) ON FREEWAYS	SKIP-DASH SKIP-DASH	WHITE WHITE	10' (3 m) LINE WITH 30' (9 m) SPACE
DOTTED LINES (EXTENSIONS OF CENTER, LANE OR TURN LANE MARKINGS)	SAME AS LINE BEING EXTENDED	SKIP-DASH	SAME AS LINE BEING EXTENDED	2' (600) LINE WITH 6' (1.8 m) SPACE
EDGE LINES	4 (100)	SOLID	YELLOW-LEFT WHITE-RIGHT	OUTLINE MEDIANS IN YELLOW
TURN LANE MARKINGS	6 (150) LINE; FULL SIZE LETTERS & SYMBOLS (8' (2.4m))	SOLID	WHITE	SEE TYPICAL TURN LANE MARKING DETAIL
TWO WAY LEFT TURN MARKING	2 @ 4 (100) EACH DIRECTION 8' (2.4m) LEFT ARROW	SKIP-DASH AND SOLID IN PAIRS	YELLOW WHITE	10' (3 m) LINE WITH 30' (9 m) SPACE FOR SKIP-DASH; 5 1/2 (140) C-C BETWEEN SOLID LINE AND SKIP-DASH LINE SEE TYPICAL TWO-WAY LEFT TURN MARKING DETAIL
CROSSWALK LINES (PEDESTRIAN) A. DIAGONALS (BIKE & EQUESTRIAN) B. LONGITUDINAL BARS (SCHOOL)	2 @ 6 (150) 12 (300) @ 45° 12 (300) @ 90°	SOLID SOLID SOLID	WHITE WHITE WHITE	NOT LESS THAN 6' (1.8 m) APART 2' (600) APART SEE TYPICAL CROSSWALK MARKING DETAILS.
STOP LINES	24 (600)	SOLID	WHITE	PLACE 4' (1.2 m) IN ADVANCE OF AND PARALLEL TO CROSSWALK, IF PRESENT. OTHERWISE, PLACE AT DESIRED STOPPING POINT. PARALLEL TO CROSSROAD CENTERLINE, WHERE POSSIBLE
PAINTED MEDIANS	2 @ 4 (100) WITH 12 (300) DIAGONALS @ 45° NO DIAGONALS USED FOR 4' (1.2 m) WIDE MEDIANS	SOLID	YELLOW: TWO WAY TRAFFIC WHITE: ONE WAY TRAFFIC	11 (280) C-C FOR THE DOUBLE LINE SEE TYPICAL PAINTED MEDIAN MARKING.
GORE MARKING AND CHANNELIZING LINES	8 (200) WITH 12 (300) DIAGONALS @ 45°	SOLID	WHITE	DIAGONALS: 15' (4.5 m) C-C (LESS THAN 30MPH (50 km/h)) 20' (6 m) C-C 30MPH (50 km/h) TO 45MPH (70 km/h) 30' (9 m) C-C (OVER 45MPH (70 km/h))
RAILROAD CROSSING	24 (600) TRANSVERSE LINES; "RR" IS 6' (1.8 m) LETTERS; 16 (400) LINE FOR "X"	SOLID	WHITE	SEE STATE STANDARD 780001 AREA OF: "R"=3.6 SQ. FT. (0.33 m ²) EACH "X"=54.0 SQ. FT. (5.0 m ²)
SHOULDER DIAGONALS (REQUIRED FOR SHOULDERS > 8')	12 (300) @ 45°	SOLID	WHITE - RIGHT YELLOW - LEFT	50' (15 m) C-C (LESS THAN 30MPH (50 km/h)) 75' (25 m) C-C (30 MPH (50 km/h) TO 45MPH (70 km/h)) 150' (45 m) C-C (OVER 45MPH (70 km/h))
U TURN ARROW	SEE DETAIL	SOLID	WHITE	16.3 SF
2 ARROW COMBINATION LEFT AND U TURN	SEE DETAIL	SOLID	WHITE	30.4 SF

FOR FURTHER DETAILS ON PAVEMENT MARKING REFER TO STANDARD SPECIFICATIONS FOR ROAD AND BRIDGE CONSTRUCTION AND STATE STANDARD 780001.

All dimensions are in inches (millimeters) unless otherwise shown.

USER NAME = foostemj	DESIGNED - EVERS	REVISED - C. JUCIUS 09-09-09	STATE OF ILLINOIS DEPARTMENT OF TRANSPORTATION	DISTRICT ONE TYPICAL PAVEMENT MARKINGS	F.A. RTE.	SECTION	COUNTY	TOTAL SHEETS	SHEET NO.	
PLOT SCALE = 50.0000" / in.	CHECKED -	REVISED - C. JUCIUS 07-01-13			TC-13					
PLOT DATE = 3/4/2019	DATE - 03-19-90	REVISED - C. JUCIUS 12-21-15			CONTRACT NO.					
		REVISED - C. JUCIUS 04-12-16			ILLINOIS FED. AID PROJECT					

FILE NAME = 22R0783-DTLS-01 - TC13	USER NAME =	DESIGNED -	REVISED -	STATE OF ILLINOIS DEPARTMENT OF TRANSPORTATION	DISTRICT 1 DETAILS	F.A.U. RTE.	SECTION	COUNTY	TOTAL SHEETS	SHEET NO.	
						1654 22-00034-00-SW WILL 28 18					
						CONTRACT NO. 61K17					
						FED. ROAD DIST. NO. 1 ILLINOIS FED. AID PROJECT J6ED(234)					



FILE NAME = 22R0783-XSCT-01 - X01

USER NAME =	DESIGNED -- JR	REVISED --
	CHECKED -- JR	REVISED --
PLOT SCALE =	DRAWN -- KWM	REVISED --
PLOT DATE = 09-29-23	CHECKED -- AG	REVISED --

STATE OF ILLINOIS
DEPARTMENT OF TRANSPORTATION

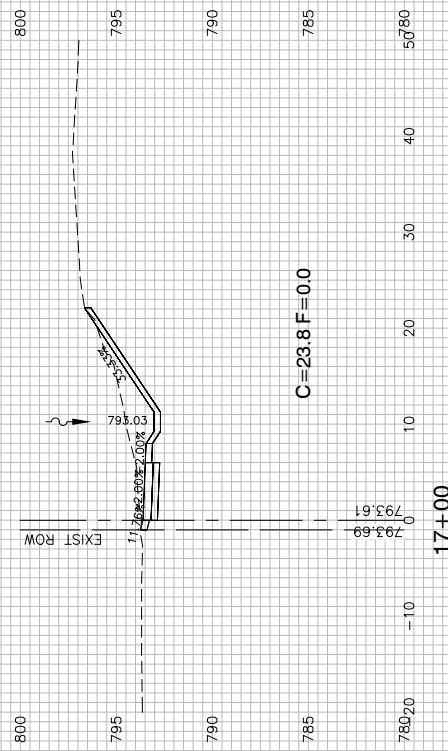
SCALE: 1"=50'

SHEET NO. 19 OF 28 SHEETS

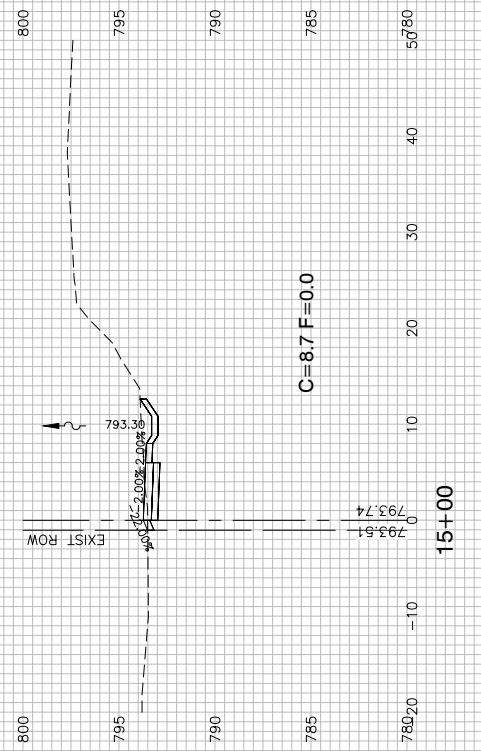
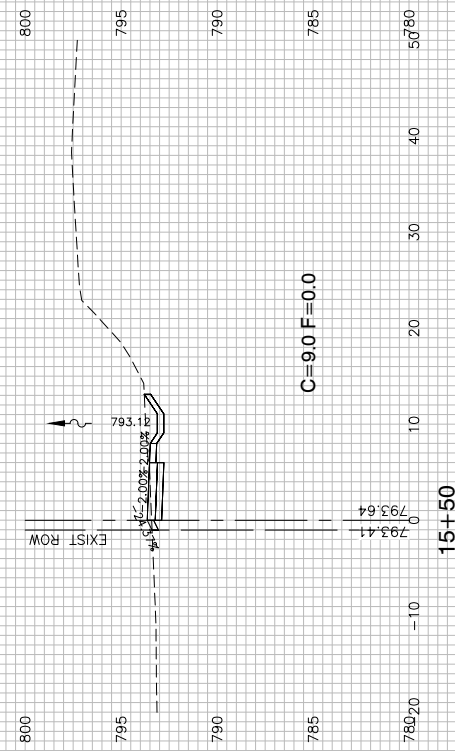
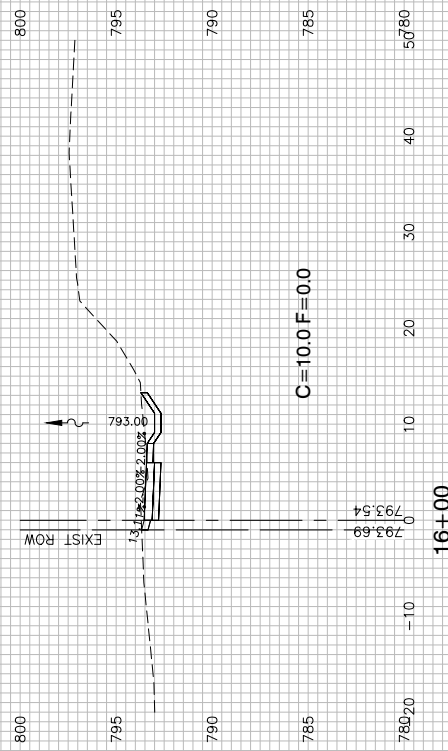
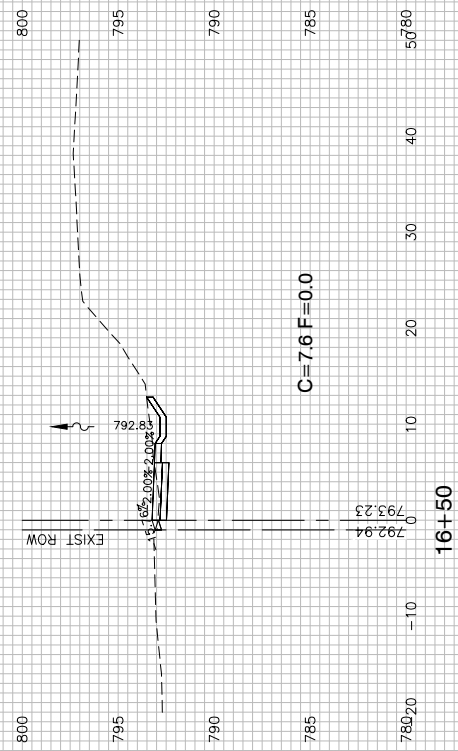
STA. 10+96.84 TO STA. 28+50

COURT STREET
COURT STREET SIDEWALKS
CROSS SECTIONS

F.A.U. RTE.	SECTION	COUNTY	TOTAL SHEETS	SHEET NO.
1654	22-00034-00-SW	WILL	28	19
CONTRACT NO. 61K17				
FED. ROAD DIST. NO. 1	ILLINOIS	FED. AID PROJECT	J6ED(234)	



DITCH LOW
STA. 16+80



FILE NAME = 22R0783-XSCT-01 - X02

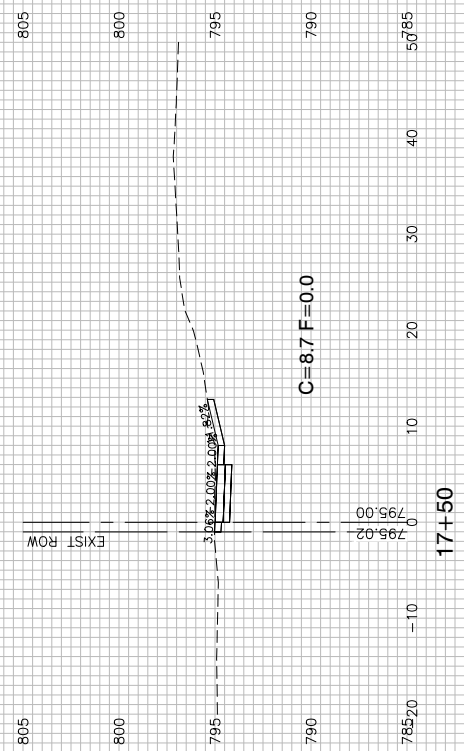
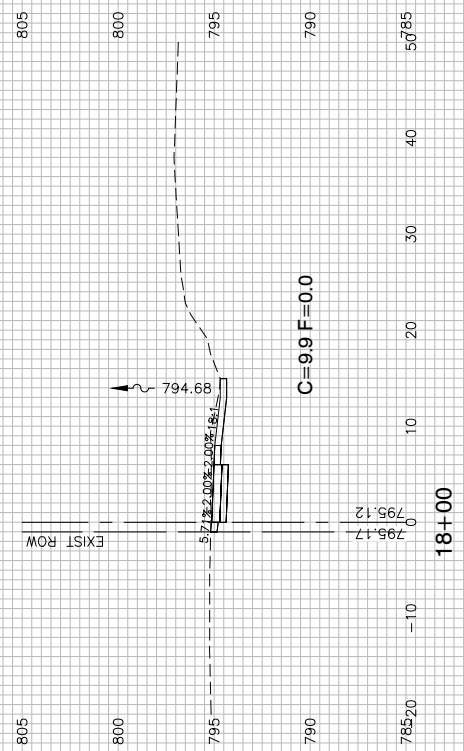
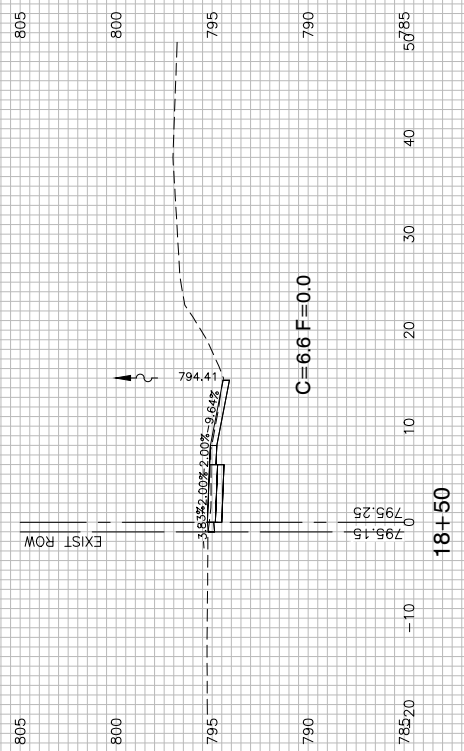
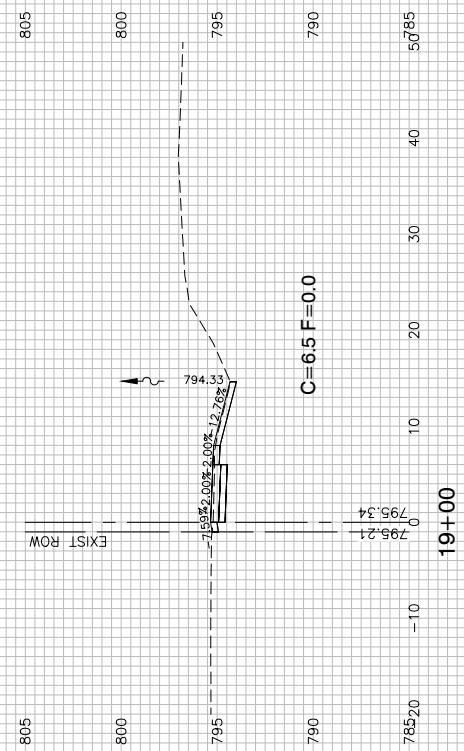
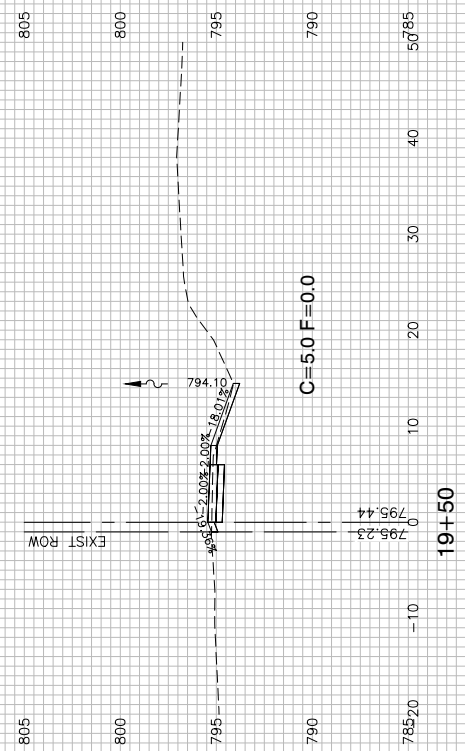
USER NAME =	DESIGNED -- JR	REVISED --
	CHECKED -- JR	REVISED --
PLOT SCALE =	DRAWN -- KWM	REVISED --
PLOT DATE = 09-29-23	CHECKED -- AG	REVISED --

STATE OF ILLINOIS
DEPARTMENT OF TRANSPORTATION

COURT STREET
COURT STREET SIDEWALKS
CROSS SECTIONS

SCALE: 1"=50' SHEET NO. 20 OF 28 SHEETS STA. 10+96.84 TO STA. 28+50

F.A.U. RTE.	SECTION	COUNTY	TOTAL SHEETS	SHEET NO.
1654	22-00034-00-SW	WILL	28	20
CONTRACT NO. 61K17				
FED. ROAD DIST. NO. 1	ILLINOIS	FED. AID PROJECT	J6ED(234)	



FILE NAME = 22R0783-XSCT-01 - X03

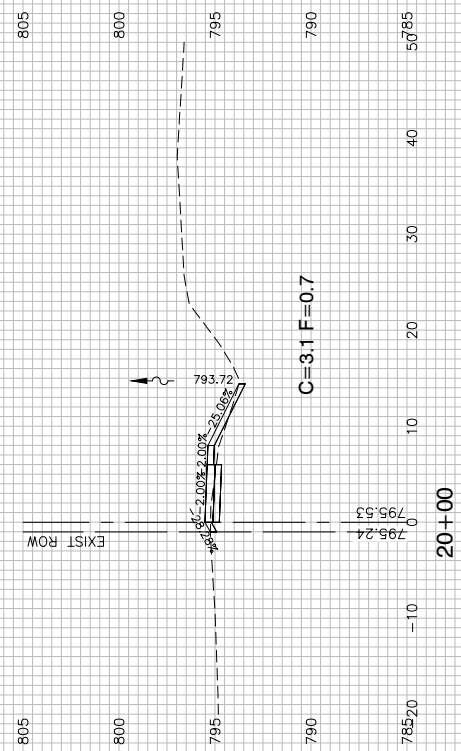
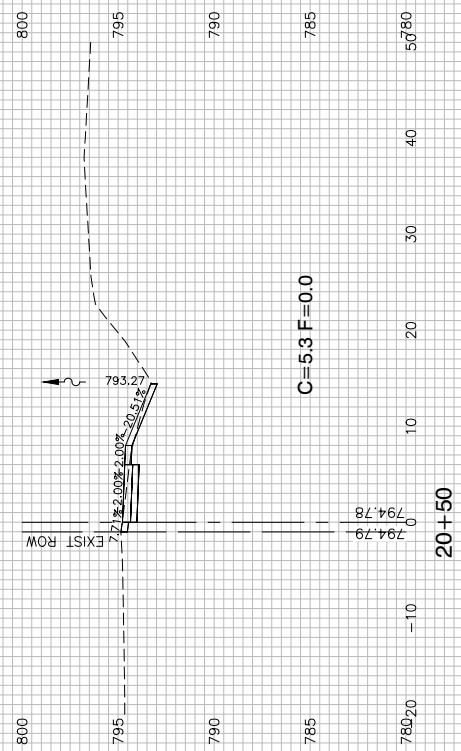
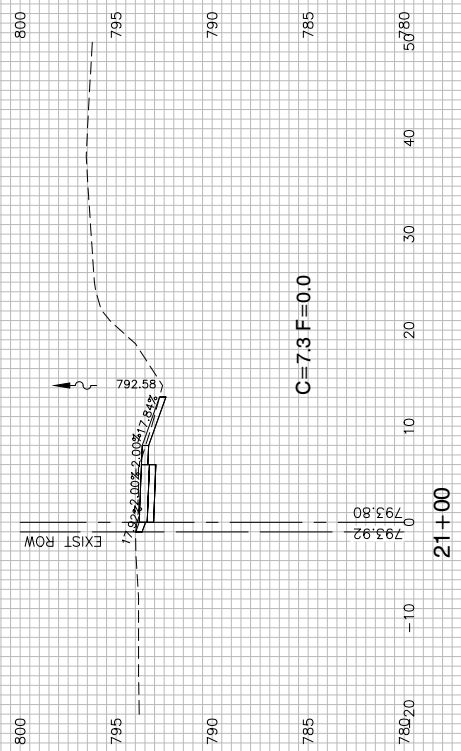
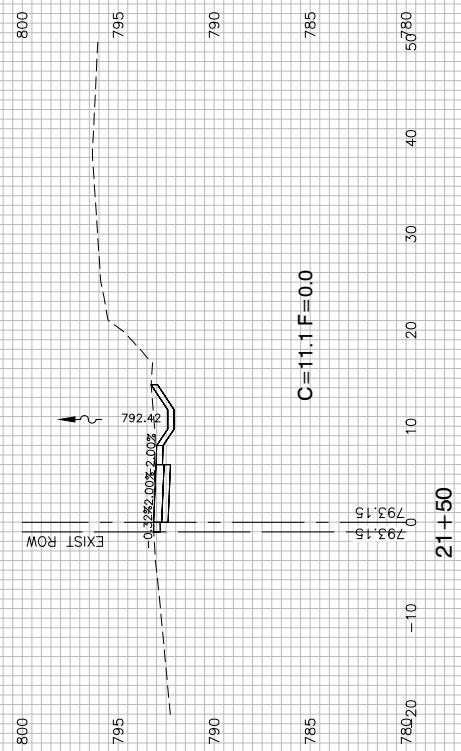
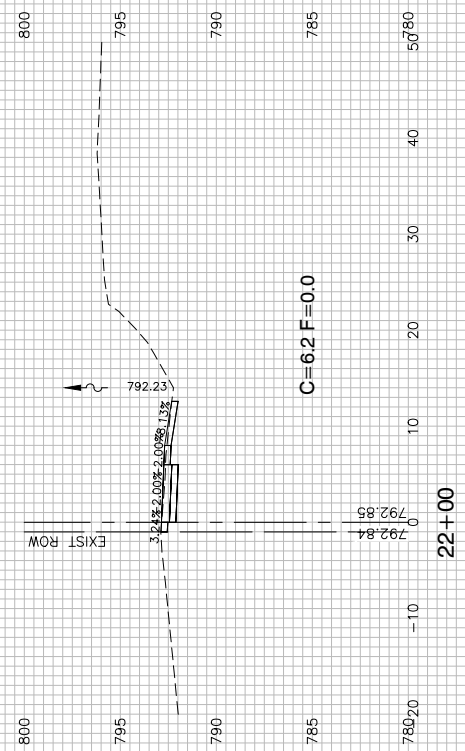
USER NAME =	DESIGNED -- JR	REVISED --
	CHECKED -- JR	REVISED --
PLOT SCALE =	DRAWN -- KWM	REVISED --
PLOT DATE = 09-29-23	CHECKED -- AG	REVISED --

STATE OF ILLINOIS
DEPARTMENT OF TRANSPORTATION

SCALE: 1"=50'		SHEET NO. 21 OF 28 SHEETS		STA. 10+96.84 TO STA. 28+50	
---------------	--	---------------------------	--	-----------------------------	--

COURT STREET
COURT STREET SIDEWALKS
CROSS SECTIONS

F.A.U. RTE.	SECTION	COUNTY	TOTAL SHEETS	SHEET NO.
1654	22-00034-00-SW	WILL	28	21
CONTRACT NO. 61K17				
FED. ROAD DIST. NO. 1	ILLINOIS	FED. AID PROJECT	J6ED(234)	



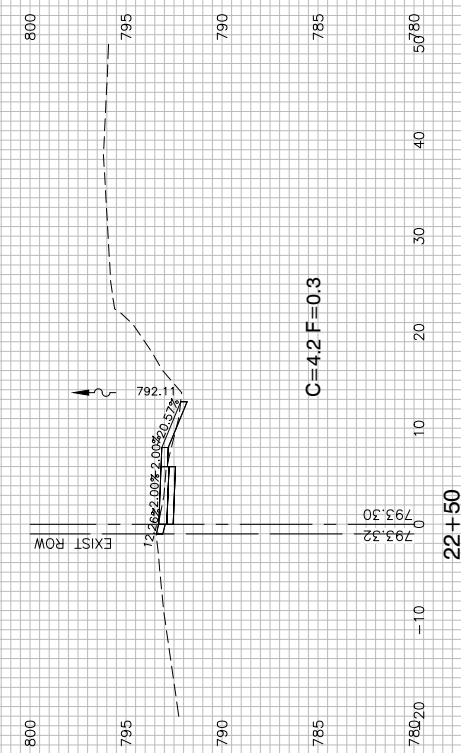
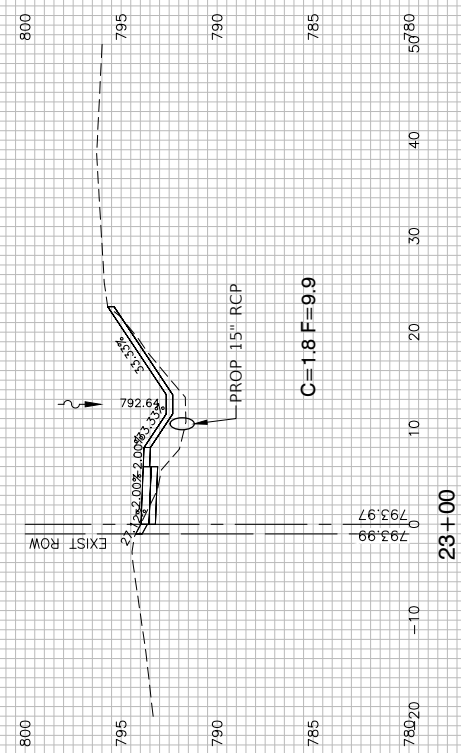
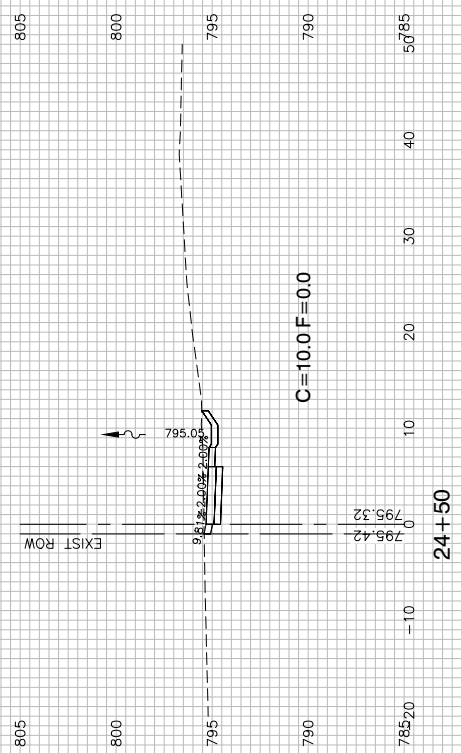
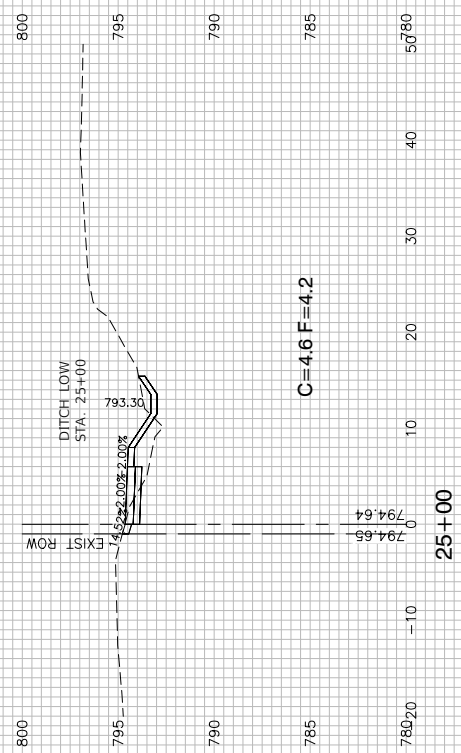
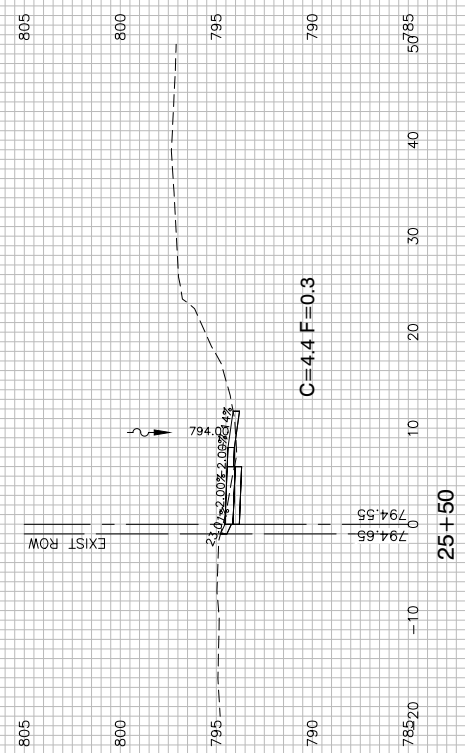
FILE NAME = 22R0783-XSCT-01 - X04

USER NAME =	DESIGNED -- JR	REVISED --
	CHECKED -- JR	REVISED --
PLOT SCALE =	DRAWN -- KWM	REVISED --
PLOT DATE = 09-29-23	CHECKED -- AG	REVISED --

STATE OF ILLINOIS
DEPARTMENT OF TRANSPORTATION

COURT STREET COURT STREET SIDEWALKS CROSS SECTIONS	
SCALE: 1"=50'	SHEET NO. 22 OF 28 SHEETS
STA. 10+96.84	TO STA. 28+50

F.A.U. RTE.	SECTION	COUNTY	TOTAL SHEETS	SHEET NO.
1654	22-00034-00-SW	WILL	28	22
CONTRACT NO. 61K17				
FED. ROAD DIST. NO. 1	ILLINOIS	FED. AID PROJECT	J6ED(234)	



FILE NAME = 22R0783-XSCT-01 - X05

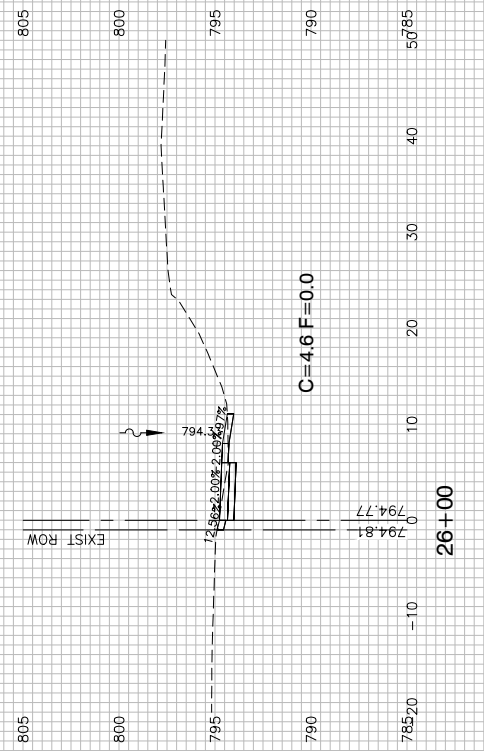
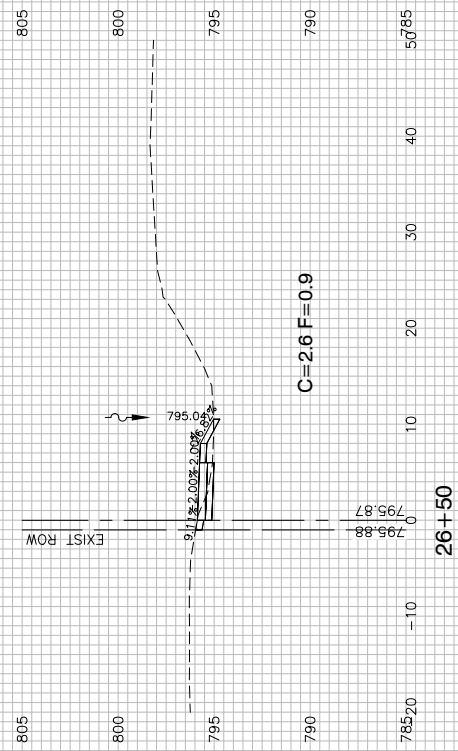
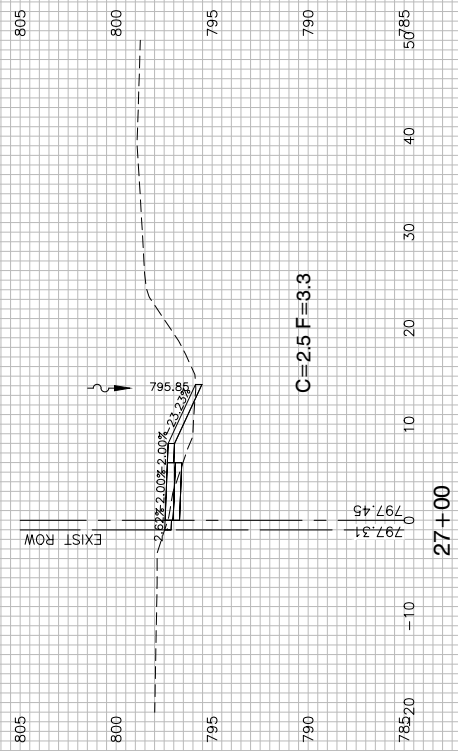
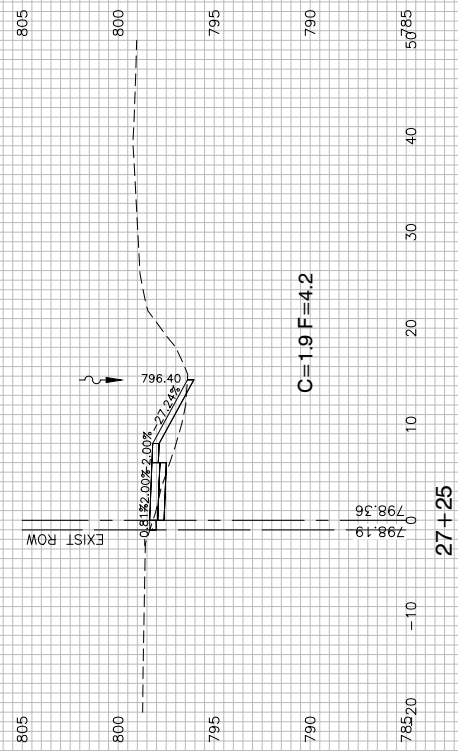
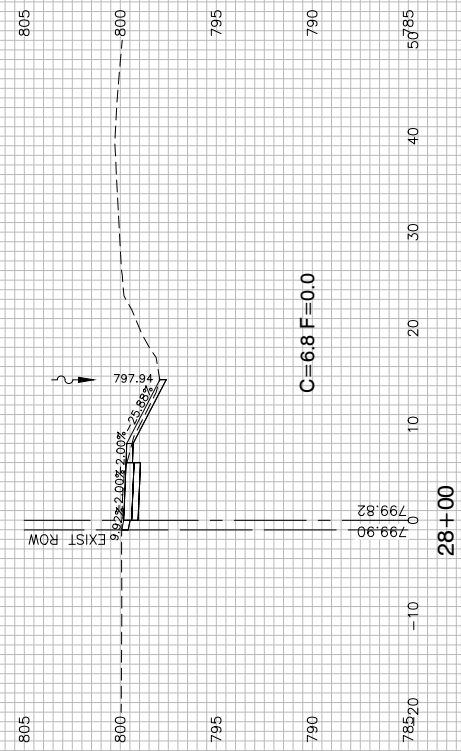
USER NAME =	DESIGNED -- JR	REVISED --
	CHECKED -- JR	REVISED --
PLOT SCALE =	DRAWN -- KWM	REVISED --
PLOT DATE = 09-29-23	CHECKED -- AG	REVISED --

STATE OF ILLINOIS
DEPARTMENT OF TRANSPORTATION

SCALE: 1"=50'		SHEET NO. 23 OF 28 SHEETS		STA. 10+96.84 TO STA. 28+50	
---------------	--	---------------------------	--	-----------------------------	--

COURT STREET
COURT STREET SIDEWALKS
CROSS SECTIONS

F.A.U. RTE.	SECTION	COUNTY	TOTAL SHEETS	SHEET NO.
1654	22-00034-00-SW	WILL	28	23
CONTRACT NO. 61K17				
FED. ROAD DIST. NO. 1	ILLINOIS	FED. AID PROJECT	J6ED(234)	



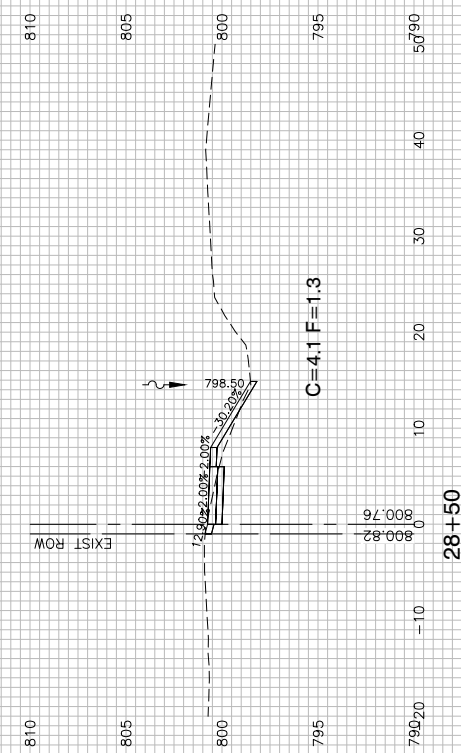
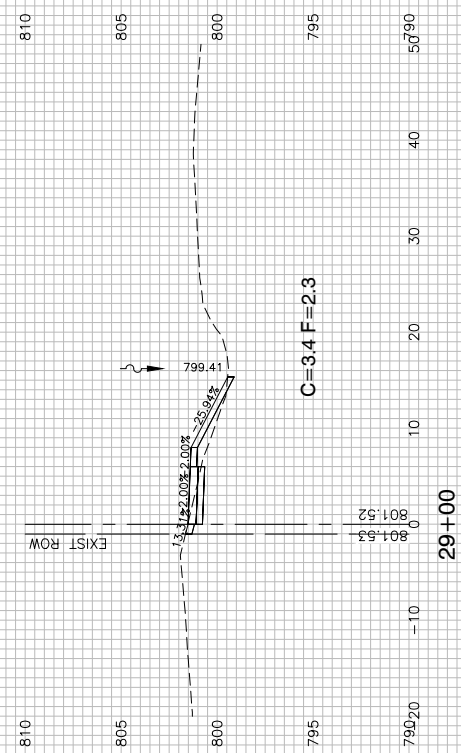
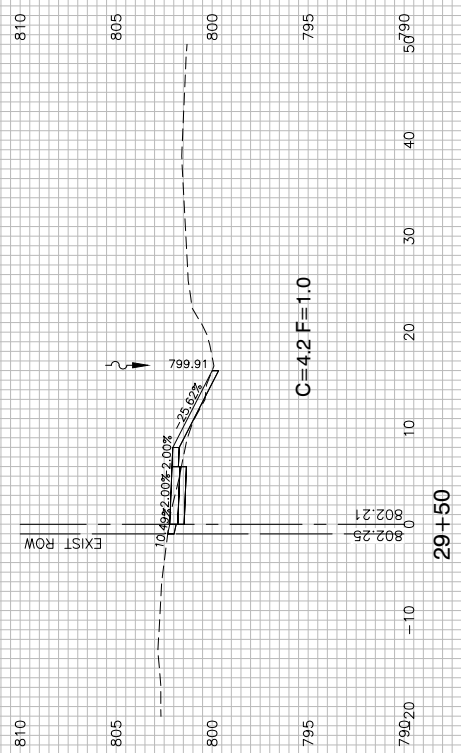
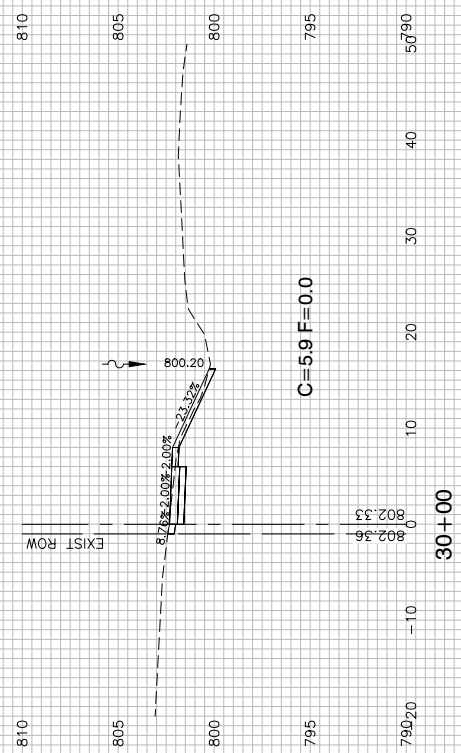
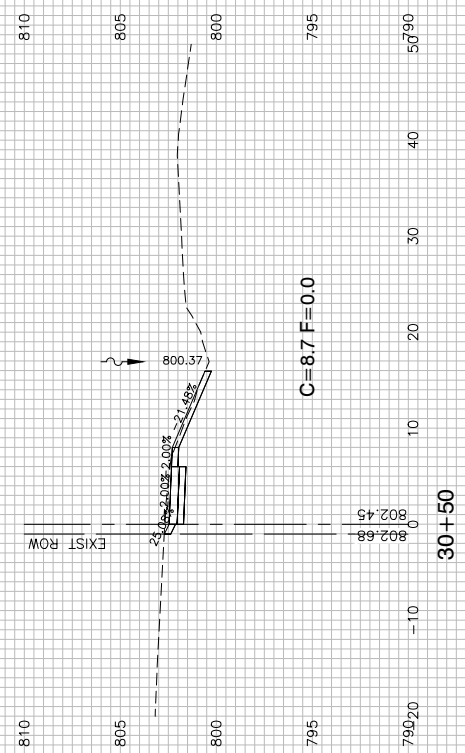
FILE NAME = 22R0783-XSCT-01 - X06

USER NAME =	DESIGNED -- JR	REVISED --
	CHECKED -- JR	REVISED --
PLOT SCALE =	DRAWN -- KWM	REVISED --
PLOT DATE = 09-29-23	CHECKED -- AG	REVISED --

STATE OF ILLINOIS
DEPARTMENT OF TRANSPORTATION

COURT STREET COURT STREET SIDEWALKS CROSS SECTIONS	
SCALE: 1"=50'	SHEET NO. 24 OF 28 SHEETS
STA. 10+96.84	TO STA. 28+50

F.A.U. RTE.	SECTION	COUNTY	TOTAL SHEETS	SHEET NO.
1654	22-00034-00-SW	WILL	28	24
CONTRACT NO. 61K17				
FED. ROAD DIST. NO. 1	ILLINOIS	FED. AID PROJECT	J6ED(234)	



FILE NAME = 22R0783-XSCT-01 - X07

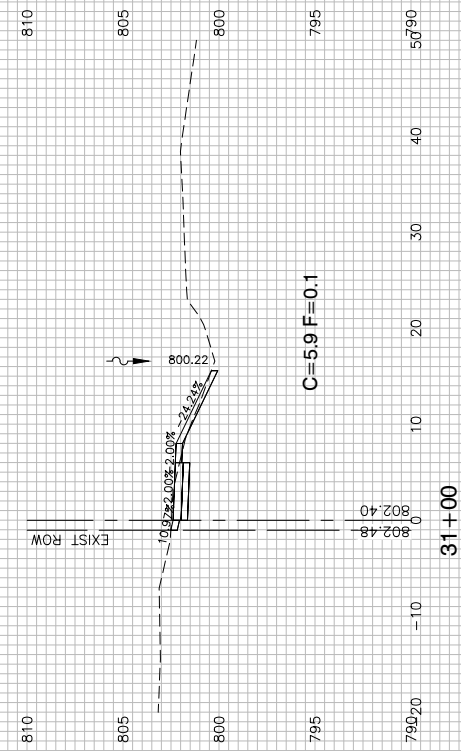
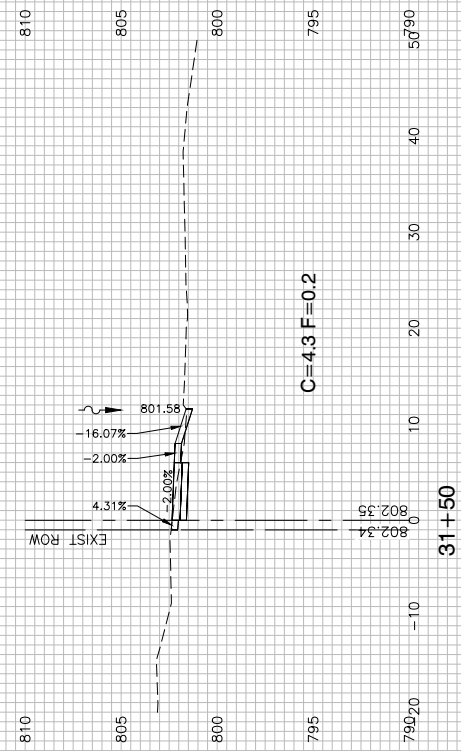
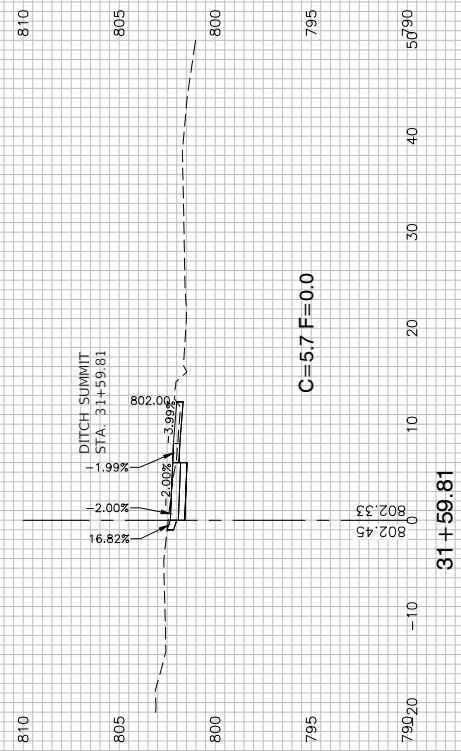
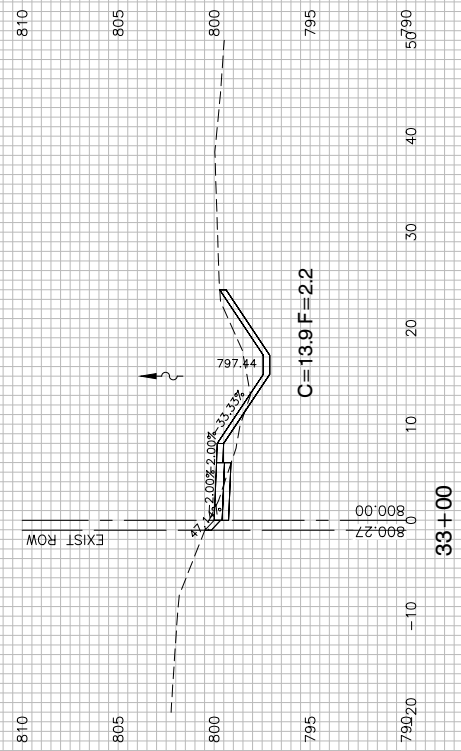
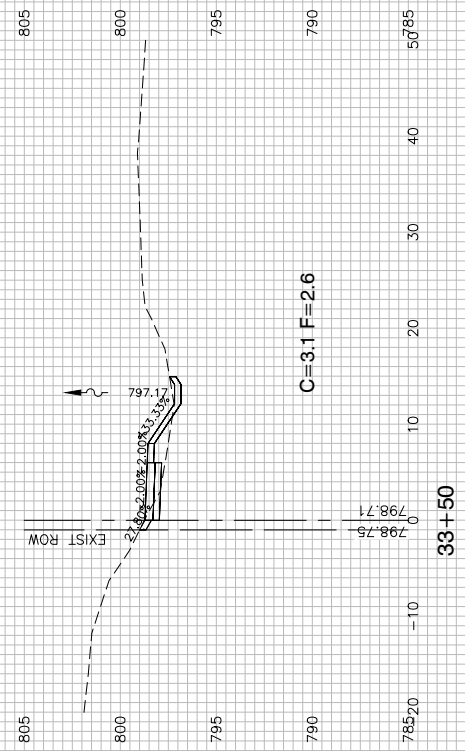
USER NAME =	DESIGNED -- JR	REVISED --
	CHECKED -- JR	REVISED --
PLOT SCALE =	DRAWN -- KWM	REVISED --
PLOT DATE = 09-29-23	CHECKED -- AG	REVISED --

STATE OF ILLINOIS
DEPARTMENT OF TRANSPORTATION

SCALE: 1"=50'		SHEET NO. 25 OF 28 SHEETS		STA. 10+96.84 TO STA. 28+50	
---------------	--	---------------------------	--	-----------------------------	--

COURT STREET
COURT STREET SIDEWALKS
CROSS SECTIONS

F.A.U. RTE.	SECTION	COUNTY	TOTAL SHEETS	SHEET NO.
1654	22-00034-00-SW	WILL	28	25
CONTRACT NO. 61K17				
FED. ROAD DIST. NO. 1	ILLINOIS	FED. AID PROJECT	J6ED(234)	



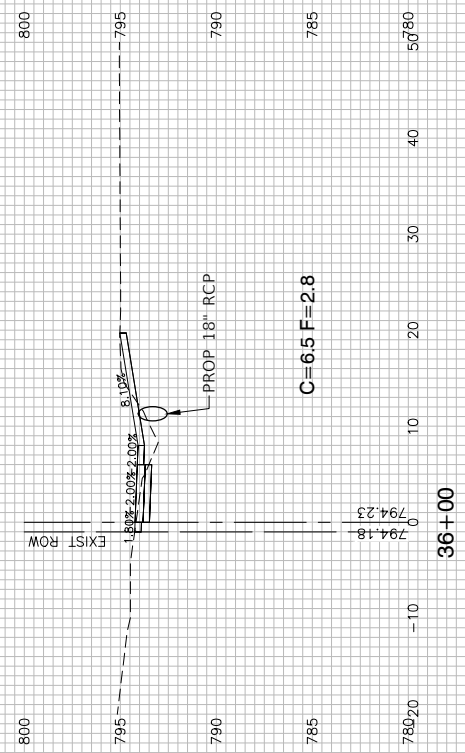
FILE NAME = 22R0783-XSCT-01 - X08

USER NAME =	DESIGNED -- JR	REVISED --
	CHECKED -- JR	REVISED --
PLOT SCALE =	DRAWN -- KWM	REVISED --
PLOT DATE = 09-29-23	CHECKED -- AG	REVISED --

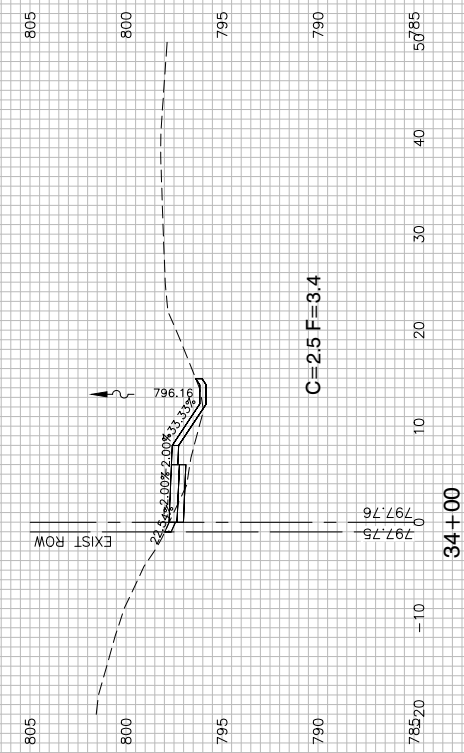
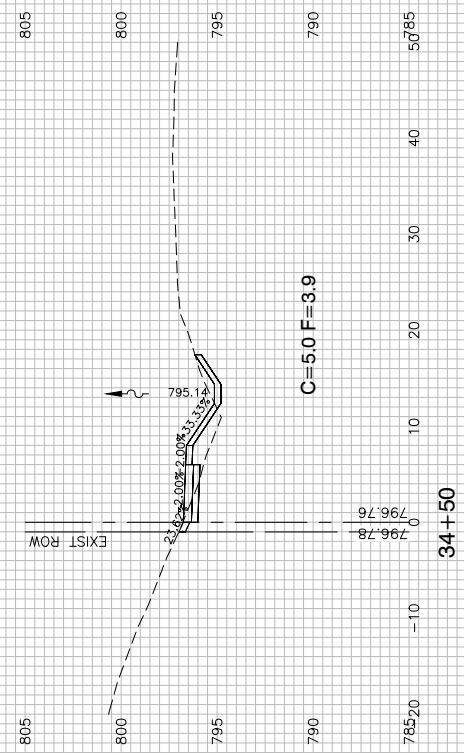
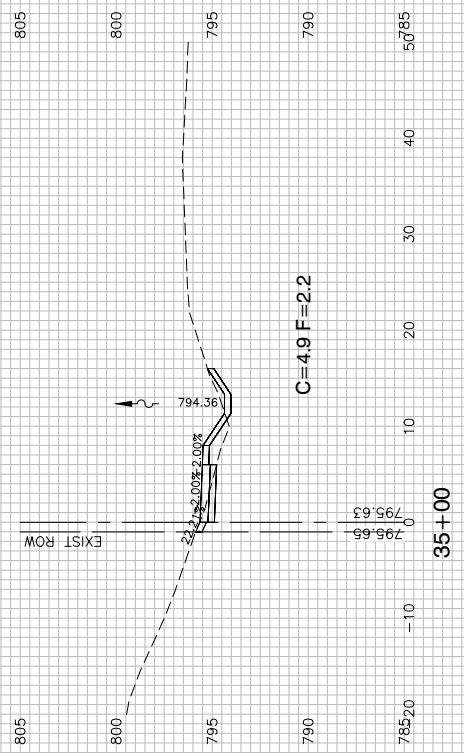
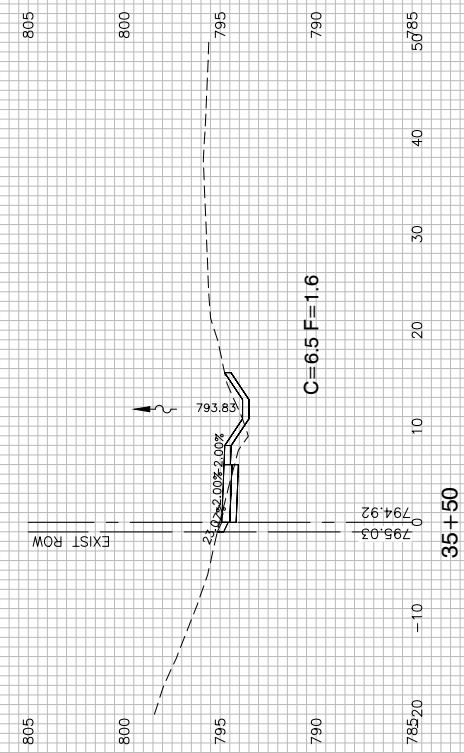
STATE OF ILLINOIS
DEPARTMENT OF TRANSPORTATION

COURT STREET COURT STREET SIDEWALKS CROSS SECTIONS		
SCALE: 1"=50'	SHEET NO. 26 OF 28 SHEETS	STA. 10+96.84 TO STA. 28+50

F.A.U. RTE.	SECTION	COUNTY	TOTAL SHEETS	SHEET NO.
1654	22-00034-00-SW	WILL	28	26
CONTRACT NO. 61K17				
FED. ROAD DIST. NO. 1	ILLINOIS	FED. AID PROJECT	J6ED(234)	



DITCH LOW
STA. 35+82



FILE NAME = 22R0783-XSCT-01 - X09

USER NAME =	DESIGNED -- JR	REVISED --
	CHECKED -- JR	REVISED --
PLOT SCALE =	DRAWN -- KWM	REVISED --
PLOT DATE = 09-29-23	CHECKED -- AG	REVISED --

STATE OF ILLINOIS
DEPARTMENT OF TRANSPORTATION

COURT STREET COURT STREET SIDEWALKS CROSS SECTIONS	
SCALE: 1"=50'	SHEET NO. 27 OF 28 SHEETS
STA. 10+96.84	TO STA. 28+50

F.A.U. RTE.	SECTION	COUNTY	TOTAL SHEETS	SHEET NO.
1654	22-00034-00-SW	WILL	28	27
CONTRACT NO. 61K17				
FED. ROAD DIST. NO. 1	ILLINOIS	FED. AID PROJECT	J6ED(234)	



FILE NAME = 22R0783-XSCT-01 - X10

USER NAME =	DESIGNED — JR	REVISED —
	CHECKED — JR	REVISED —
PLOT SCALE =	DRAWN — KWM	REVISED —
PLOT DATE = 09-29-23	CHECKED — AG	REVISED —

STATE OF ILLINOIS
DEPARTMENT OF TRANSPORTATION

COURT STREET
COURT STREET SIDEWALKS
CROSS SECTIONS

SCALE: 1"=50' SHEET NO. 28 OF 28 SHEETS STA. 10+96.84 TO STA. 28+50

F.A.U. RTE.	SECTION	COUNTY	TOTAL SHEETS	SHEET NO.
1654	22-00034-00-SW	WILL	28	28
CONTRACT NO. 61K17				
FED. ROAD DIST. NO. 1 ILLINOIS FED. AID PROJECT J6ED(234)				