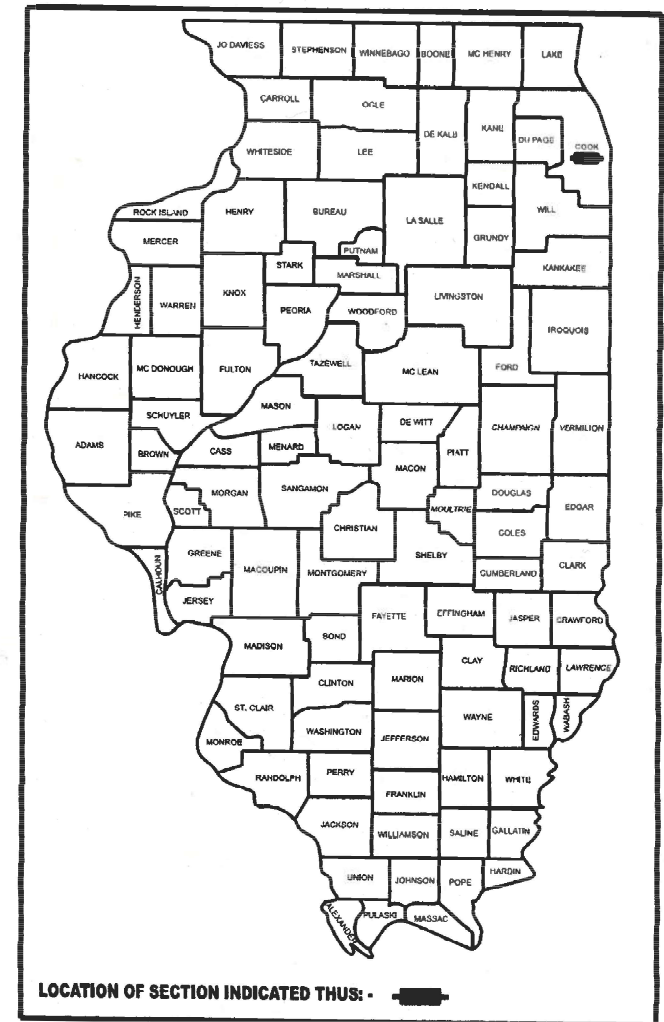


STATE OF ILLINOIS
DEPARTMENT OF TRANSPORTATION

FAI RTE	SECTION	COUNTY	TOTAL SHEETS	SHEET NO.
290	FAI 290 23 PATCH	COOK	14	1
ILLINOIS			CONTRACT NO. 62W04	

* 14 + 1 = 15 TOTAL SHEETS

D-91-081-24



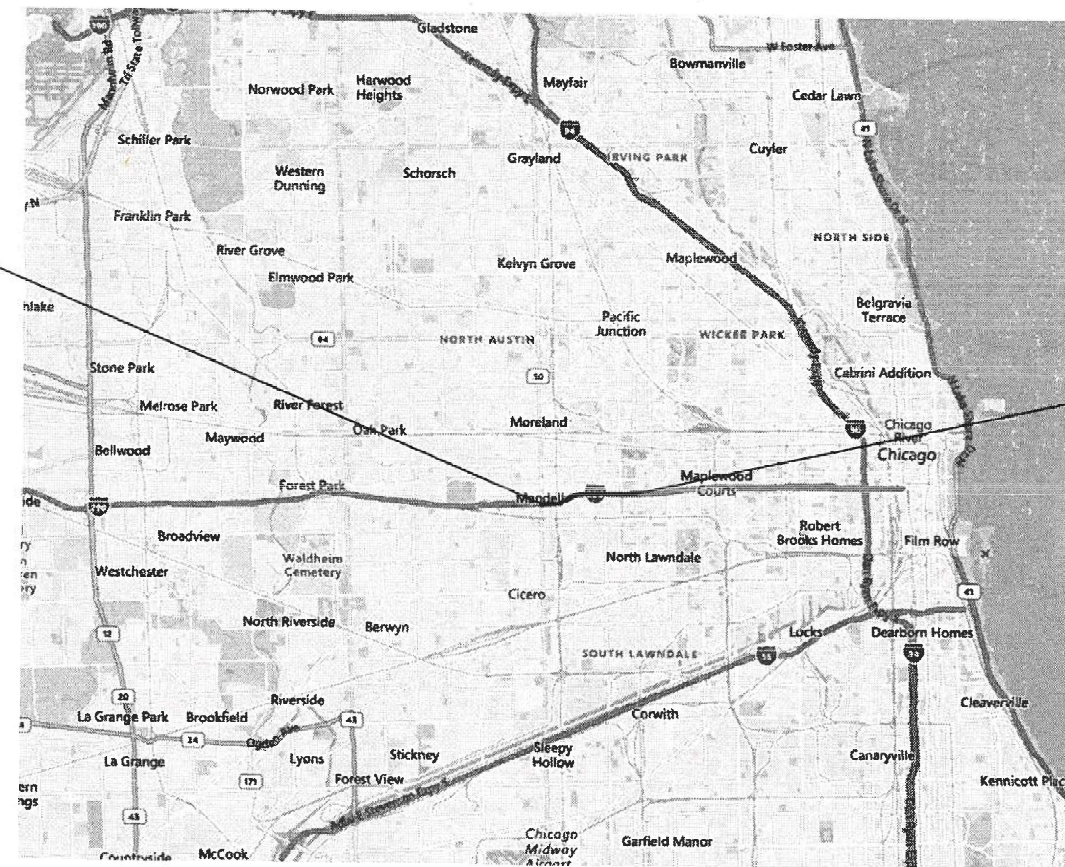
LOCATION OF SECTION INDICATED THUS: -

PROPOSED
HIGHWAY PLANS

FAI 290: I-290 (EISENHOWER EXPWY)
CICERO AVENUE TO CENTRAL PARK AVENUE
SECTION: FAI 290 23 PATCH
INTERMITTENT RESURFACING
COOK COUNTY

C-91-090-24

R 13 E / R 14 E



PROJECT BEGINS
STA. 778 + 00

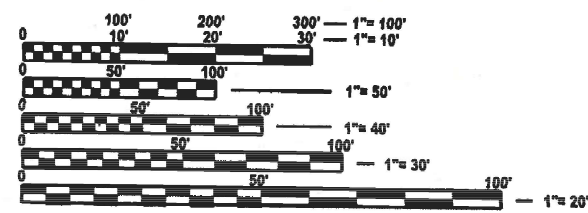
T 39 N

PROJECT ENDS
STA. 842 + 00

FOR INDEX OF SHEETS, SEE SHEET NO. 2

THE PROJECT IS LOCATED IN THE CITY OF CHICAGO

TRAFFIC DATA
2022 ADT = 185,600
POSTED SPEED = 55 MPH



FULL SIZE PLANS HAVE BEEN PREPARED USING STANDARD ENGINEERING SCALES. REDUCED SIZED PLANS WILL NOT CONFORM TO STANDARD SCALES. IN MAKING MEASUREMENTS ON REDUCED PLANS, THE ABOVE SCALES MAY BE USED.

J.U.L.I.E.
JOINT UTILITY LOCATION INFORMATION FOR EXCAVATION
1-800-892-0123
OR 811
C.U.A.N: 312-744-7000

PROJECT ENGINEER: RODRIGO LEDEZMA
PROJECT MANAGER: J. ALAIN MIDY

(847) 705-4580
(847) 221-3056

WEST CHICAGO TOWNSHIP
GROSS LENGTH = 6,400.00 FT. = 1.21 MILE
NET LENGTH = 3,958 FT. = 0.75 MILE

CONTRACT NO. 62W04

STATE OF ILLINOIS
DEPARTMENT OF TRANSPORTATION
SUBMITTED NOVEMBER 29, 2023
Renzo OAS
REGIONAL ENGINEER
February 2, 2024
Steph M. Smith
ENGINEER OF DESIGN AND ENVIRONMENT
February 2, 2024
DIRECTOR OF HIGHWAYS PROJECT IMPLEMENTATION

PRINTED BY THE AUTHORITY
OF THE STATE OF ILLINOIS

INDEX OF SHEETS

STATE STANDARDS

GENERAL NOTES

SHEET NO.

DESCRIPTION

STANDARD NO.

DESCRIPTION

1	COVER SHEET	000001-08	STANDARD SYMBOLS, ABBREVIATIONS, AND PATTERNS
2	INDEX OF SHEETS, STATE STANDARDS, AND GENERAL NOTES	604001-05	FRAME AND LIDS TYPE 1
3	SUMMARY OF QUANTITIES	701400-12	APPROACH TO LANE CLOSURE, FREEWAY/EXPRESSWAY
4	INTERMITTENT RESURFACING SCHEDULE	701401-13	LANE CLOSURE, FREEWAY/EXPRESSWAY
5-7	PLAN SHEETS	701411-09	LANE CLOSURE, MULTILANE, AT ENTRANCE OR EXIT RAMP, FOR SPEEDS > 45 MPH
8	ENTRANCE AND EXIT RAMP CLOSURE DETAILS (TC-08)	701428-01	TRAFFIC CONTROL, SETUP AND REMOVAL, FREEWAY/EXPRESSWAY
9	TRAFFIC CONTROL DETAILS FOR FREEWAY SINGLE AND MULTILANE WEAVE (TC-09)	701446-11	TWO LANE CLOSURE, FREEWAY/EXPRESSWAY
10	TYPICAL APPLICATION FOR RAISED REFLECTIVE PAVEMENT MARKERS (SNOW-PLOW RESISTANT) (TC-11)	701901-09	TRAFFIC CONTROL DEVICES
11A, 11B	MULTILANE FREEWAY PAVEMENT MARKING DETAILS (TC-12)	886001-01	DETECTOR LOOP INSTALLATIONS
12	TRAFFIC CONTROL DETAILS FOR FREEWAY SHOULDER CLOSURES AND PARTIAL RAMP CLOSURES (TC-17)		
13	FREEWAY/EXPRESSWAY SIGNING FOR FLAGGING OPERATIONS AT WORK ZONE OPENINGS ON FREEWAYS/EXPRESSWAYS (TC-18)		
14	DETECTOR LOOP INSTALLATION DETAILS FOR ROADWAY RESURFACING (TS-07)		

1. BEFORE STARTING ANY EXCAVATION, THE CONTRACTOR SHALL CALL "CUAN" AT 312-744-7000 FOR FIELD LOCATIONS OF BURIED ELECTRIC, TELEPHONE AND GAS FACILITIES, (48 HOURS NOTIFICATION IS REQUIRED).
2. THE CONTRACTOR SHALL COORDINATE CONSTRUCTION ACTIVITIES WITH UTILITY COMPANIES AND THE CITY OF CHICAGO.
3. THE CONTRACTOR WILL NOT BE ALLOWED TO SET UP A YARD OR FIELD OFFICE ON STATE PROPERTY WITHOUT WRITTEN PERMISSION FROM THE DEPARTMENT.
4. BEFORE BEGINNING ANY WORK, THE CONTRACTOR SHALL RETAIN AND RECORD FOR FUTURE REFERENCE, ALL EXISTING PAVEMENT MARKING LINES (AND RAISED REFLECTIVE PAVEMENT MARKERS) IN ORDER THAT THESE LOCATIONS CAN BE RE-ESTABLISHED FOR STRIPING. EXACT LOCATIONS OF ALL PAVEMENT MARKINGS SHALL BE AS DIRECTED BY THE ENGINEER.
5. THE RESIDENT ENGINEER SHALL CONTACT EMAD ALHUSSEINI AREA TRAFFIC FIELD TECHNICIAN, AT EMAD.ALHUSSEINI@ILLINOIS.GOV, A MINIMUM OF TWO (2) WEEKS PRIOR TO THE PLACEMENT OF PERMANENT PAVEMENT MARKINGS.
6. ANY DAMAGE TO EXISTING PAVEMENT MARKINGS OR RAISED REFLECTIVE PAVEMENT MARKERS OUTSIDE THE REMOVAL LINE SHOWN ON THE PLANS SHALL BE REPLACED AT THE CONTRACTOR'S EXPENSE.
7. ALL PAVEMENT MARKINGS SHALL BE PLACED THROUGHOUT THE IMPROVEMENT ACCORDING TO DISTRICT 1 TYPICAL PAVEMENT MARKING.
8. FRAMES AND GRATES ADJUSTMENT OF PRIVATE UTILITIES WITHIN THE PROJECT LIMITS SHALL BE DONE BY THEIR RESPECTIVE OWNERS AND ARE NOT PART OF THIS CONTRACT.
9. THE CONTRACTOR SHALL CONTACT THE DISTRICT TRAFFIC CONTROL SUPERVISOR FOR EXPRESSWAYS AT (847) 705-4151 A MINIMUM OF 72 HOURS IN ADVANCE OF BEGINNING WORK.
10. IT SHALL BE THE CONTRACTOR'S RESPONSIBILITY TO VERIFY ALL DIMENSIONS AND CONDITIONS EXISTING IN THE FIELD PRIOR TO ORDERING MATERIALS AND BEGINNING CONSTRUCTION. THIS SHALL INCLUDE LOCATING THE MAST ARM AND FOUNDATIONS AND VERIFYING THE MAST ARM LENGTHS.
11. RAISED REFLECTIVE PAVEMENT MARKERS SHALL BE PLACED THROUGHOUT THE IMPROVEMENT ACCORDING TO THE DISTRICT STANDARDS AS NOTED IN THE DETAIL.
12. DO NOT SCALE PLANS FOR CONSTRUCTION DIMENSIONS.
13. ALL INTERMITTENT RESURFACING LOCATIONS WILL BE DETERMINED IN THE FIELD BY THE ENGINEER.
14. OVERNIGHT LANE CLOSURES SHALL NOT BE ALLOWED FOR REHABILITATION PROJECTS INVOLVING DAYTIME MILLING AND RESURFACING OPERATIONS UNLESS OTHER CONDITIONS WARRANT EXTENDED LANE CLOSURE AS DETERMINED AND APPROVED IN WRITING BY THE ENGINEER OR AS PROVIDED FOR IN THE CONTRACT SPECIFICATIONS.

HOT-MIX ASPHALT MIXTURE REQUIREMENTS		
MIXTURE TYPE	AIR VOIDS @ Ndes	QUALITY MANAGEMENT PROGRAM (QMP)
PARTIAL DEPTH PATCHING		
POLYMERIZED HOT-MIX ASPHALT SURFACE COURSE, STONE MATRIX ASPHALT, 9.5, MIX "F", N80, 2"	3.5% AT 80 GYR.	QC/QA
QMP DESIGNATION: QUALITY CONTROL/QUALITY ASSURANCE (QC/QA); QUALITY CONTROL FOR PERFORMANCE (QCP) PAY FOR PERFORMANCE (PFP).		

NOTE 1: THE UNIT WEIGHT USED TO CALCULATE ALL HMA SURFACE MIXTURE QUANTITIES IS 112 LBS/SQ YD/IN.

NOTE 2: THE "AC TYPE" FOR POLYMERIZED HMA MIXES SHALL BE "SBS/SBR PG 76-22" AND FOR NON-POLYMERIZED HMA THE "AC TYPE" SHALL BE "PG 64-22" UNLESS MODIFIED BY SPECIAL PROVISIONS.

MODEL: C:\Users\Gm\OneDrive\Documents\DOT\Office\Drawings\10812\CA\Drawings\10812\411\gen000.dgn
FILE NAME: P:\Users\Gm\OneDrive\Documents\DOT\Office\Drawings\10812\CA\Drawings\10812\411\gen000.dgn

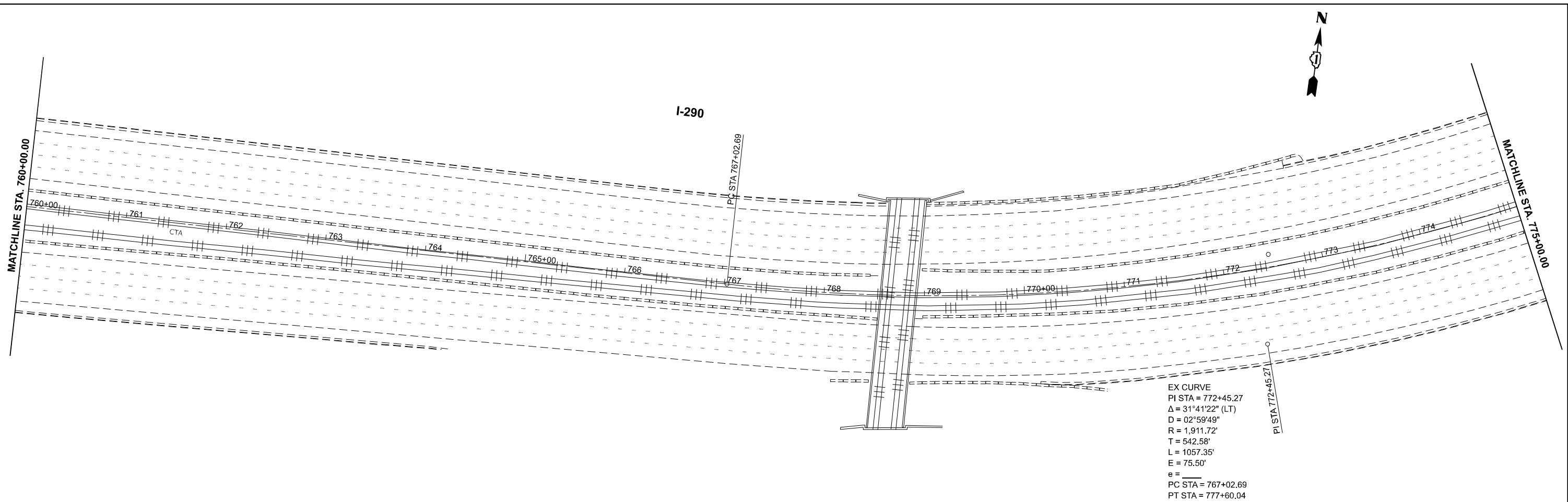
USER NAME = Fritz, Guillaume	DESIGNED -	REVISED -
	DRAWN -	REVISED -
PLOT SCALE = 0.16666633 / in.	CHECKED -	REVISED -
PLOT DATE = 12/22/2023	DATE -	REVISED -

**STATE OF ILLINOIS
DEPARTMENT OF TRANSPORTATION**

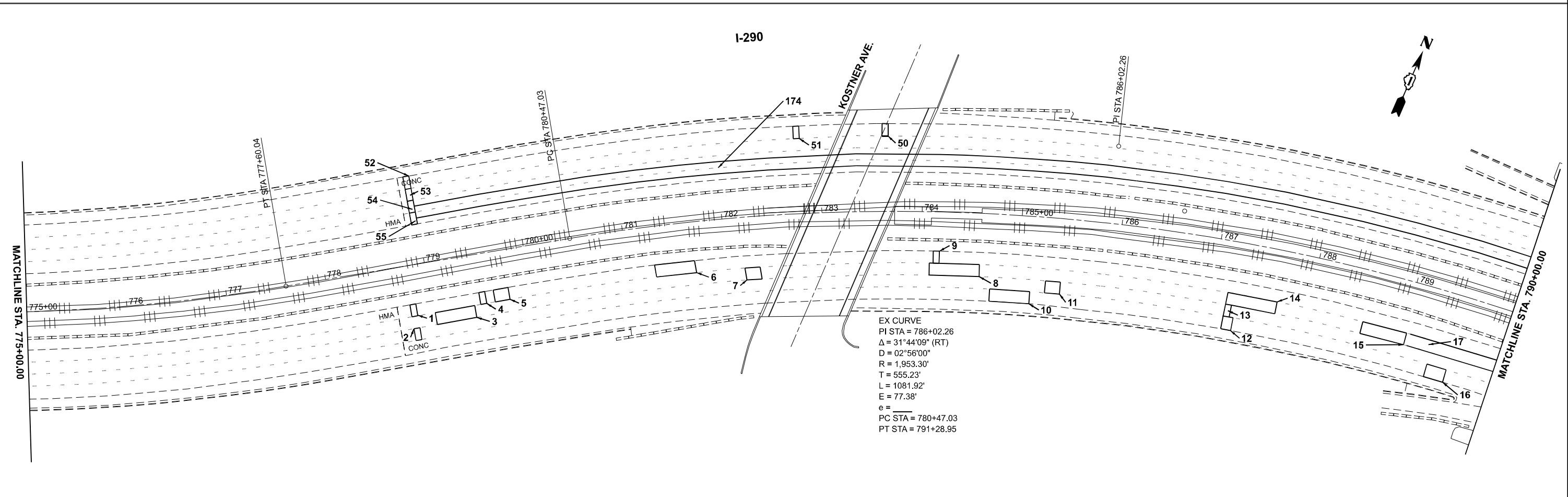
INDEX OF SHEETS, STATE STANDARDS AND GENERAL NOTES

SCALE: NONE SHEET 000 OF 4 SHEETS STA. TO STA.

F. A. I. R. T. E.	SECTION	COUNTY	TOTAL SHEETS	SHEET NO.
290	FAI 290 23 PATCH	COOK	14	2
CONTRACT NO. 62W04				
ILLINOIS FED. AID PROJECT				



EX CURVE
 PI STA = 772+45.27
 $\Delta = 31^{\circ}41'22''$ (LT)
 $D = 02^{\circ}59'49''$
 $R = 1,911.72'$
 $T = 542.58'$
 $L = 1057.35'$
 $E = 75.50'$
 $e =$
 PC STA = 767+02.69
 PT STA = 777+60.04



EX CURVE
 PI STA = 786+02.26
 $\Delta = 31^{\circ}44'09''$ (RT)
 $D = 02^{\circ}56'00''$
 $R = 1,953.30'$
 $T = 555.23'$
 $L = 1081.92'$
 $E = 77.38'$
 $e =$
 PC STA = 780+47.03
 PT STA = 791+28.95

MODEL: I-290 - Plan - 51
 FILE NAME: p:\bids\pcc\state\illinois\DOT\Office\District 1\ORIG Projects\108126\CAD\Drawings\CD\Sheet\108126-24-Plan.dwg

USER NAME = Fritz, Guillaume	DESIGNED -	REVISED -
DRAWN -	REVISED -	
PLOT SCALE = 0.16666633' / in.	CHECKED -	REVISED -
PLOT DATE = 12/19/2023	DATE -	REVISED -

STATE OF ILLINOIS
DEPARTMENT OF TRANSPORTATION

PLAN SHEET
I-290 (IL ROUTE 83 TO HALSTED ST.)

SCALE: 1"=50' SHEET 26 OF 34 SHEETS STA. TO STA.

F.A. I RTE.	SECTION	COUNTY	TOTAL SHEETS	SHEET NO.
290	FAI 290 23 PATCH	COOK	14	5
CONTRACT NO. 62W04			ILLINOIS FED. AID PROJECT	



I-290

KEELER AVE.

174

49

48

46
47

MATCHLINE STA. 805+00.00

MATCHLINE STA. 790+00.00

PT STA 791+28.95

790+00 791 792 793 794 795+00 796 797 798 799 800+00 801 802 803 804

19

21

22

18

20

I-290

PULASKI RD.

174

44

43

42

41

40

39

MATCHLINE STA. 820+00.00

MATCHLINE STA. 805+00.00

805+00 806 807 808 809 810+00 811 812 813 814 815+00 816 817 818 819

25

24

23

MODEL: I-290 - Plan - 83
FILE NAME: p:\bids\pcc\mfr\com\p\DOT\Documents\DOT Office\District 1\ORIG Projects\10812\CAD\Drawings\CAD\Sheet\10812-24-18-18.dgn

USER NAME	= Fritz, Guillaume
PLOT SCALE	= 0.16666633' / in.
PLOT DATE	= 12/19/2023

DESIGNED	-
DRAWN	-
CHECKED	-
DATE	-

REVISED	-
REVISED	-
REVISED	-
REVISED	-

STATE OF ILLINOIS
DEPARTMENT OF TRANSPORTATION

PLAN SHEET
I-290 (IL ROUTE 83 TO HALSTED ST.)

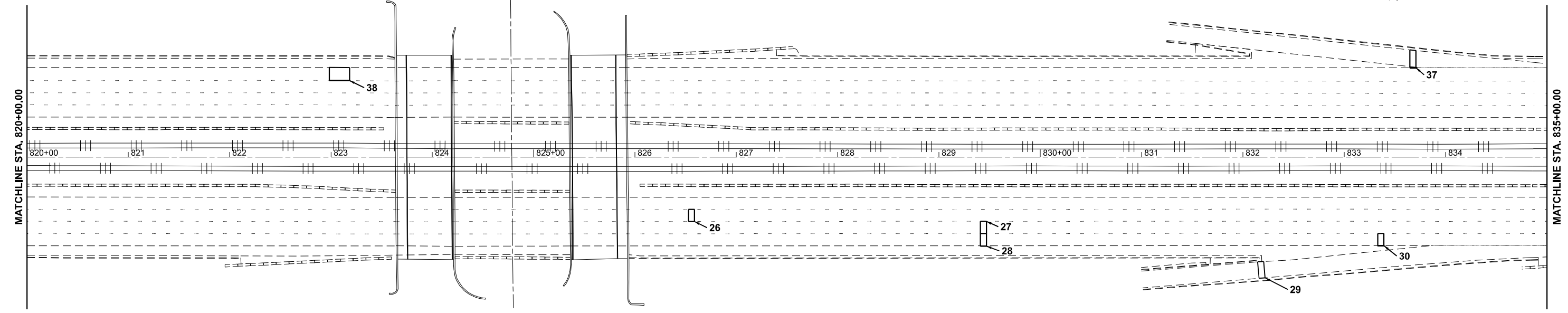
SCALE: 1"=50'

SHEET 27 OF 34 SHEETS STA. TO STA.

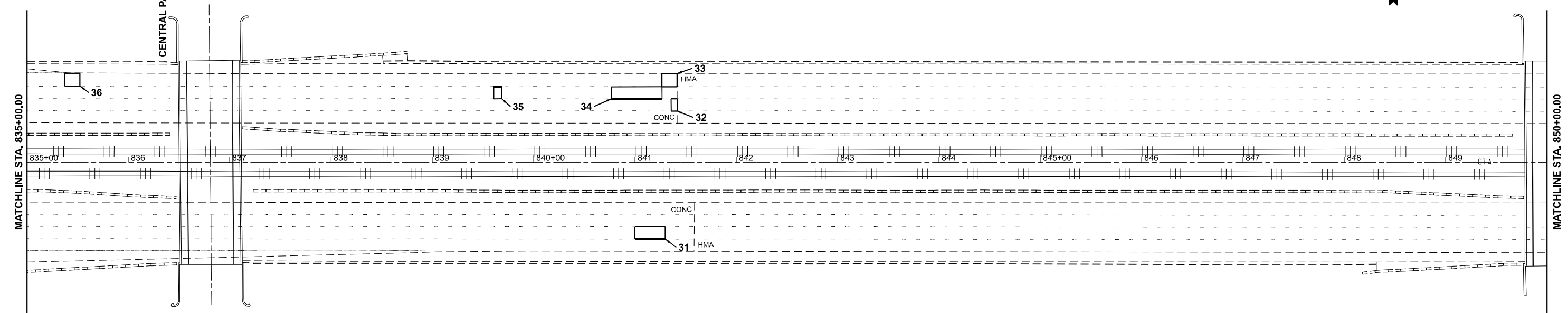
F.A. I RTE.	SECTION	COUNTY	TOTAL SHEETS	SHEET NO.
290	FAI 290 23 PATCH	COOK	14	6
CONTRACT NO. 62W04				
ILLINOIS FED. AID PROJECT				



INDEPENDENCE BLVD. I-290



I-290



MODEL: I-290_Plan_Sht.dwg
FILE NAME: P:\Bids\2024\I-290\DOT\Drawings\I-290_Plan_Sht.dwg

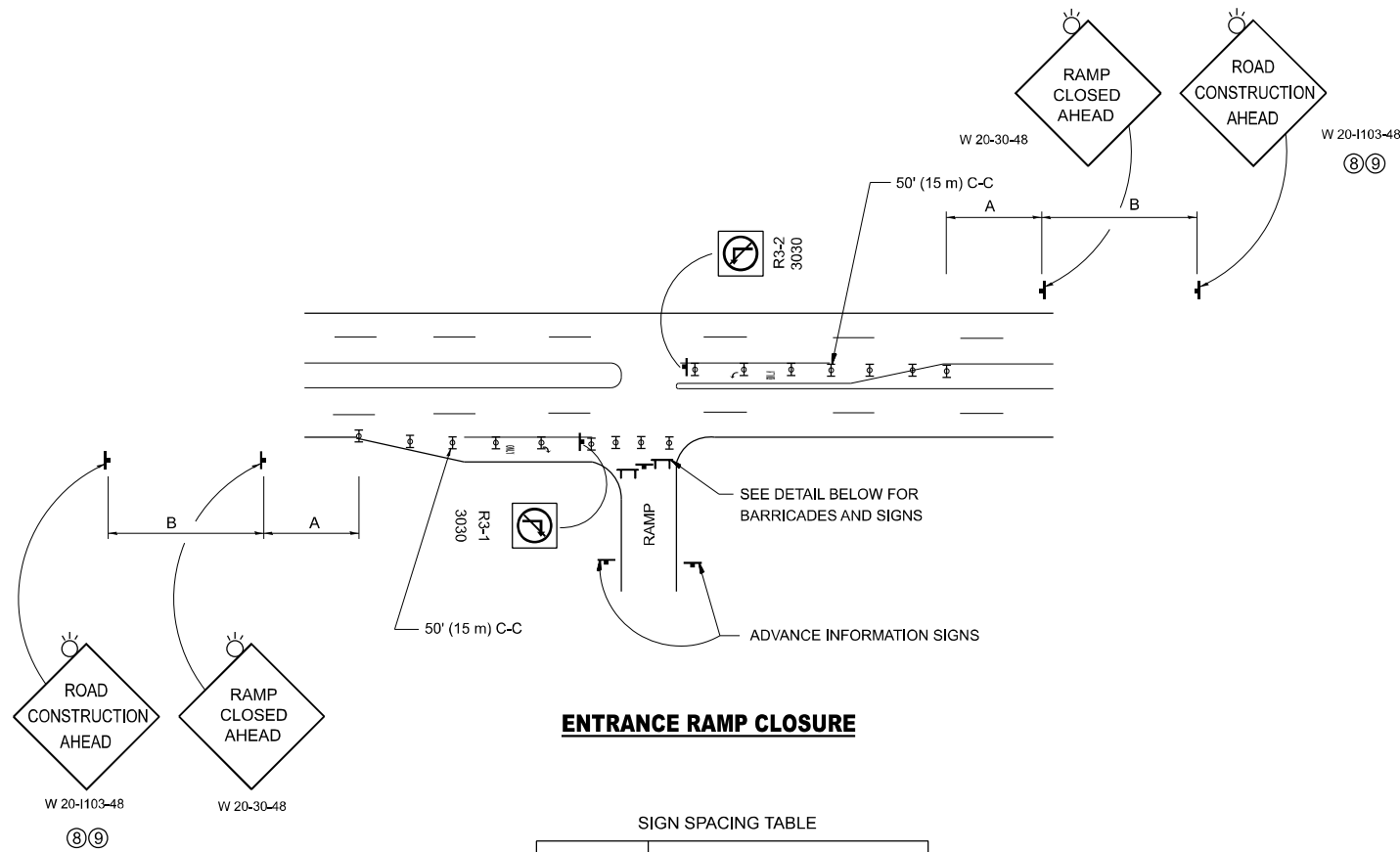
USER NAME = Fritz, Guillaume	DESIGNED -	REVISED -
DRAWN -	REVISED -	
PLOT SCALE = 0.16666633' / in.	CHECKED -	REVISED -
PLOT DATE = 1/8/2024	DATE -	REVISED -

STATE OF ILLINOIS
DEPARTMENT OF TRANSPORTATION

PLAN SHEET
I-290 (IL ROUTE 83 TO HALSTED ST.)

SCALE: 1"=50' SHEET 28 OF 34 SHEETS STA. TO STA.

F.A. I RTE.	SECTION	COUNTY	TOTAL SHEETS	SHEET NO.
290	FAI 290 23 PATCH	COOK	14	7
CONTRACT NO. 62W04				
ILLINOIS FED. AID PROJECT				

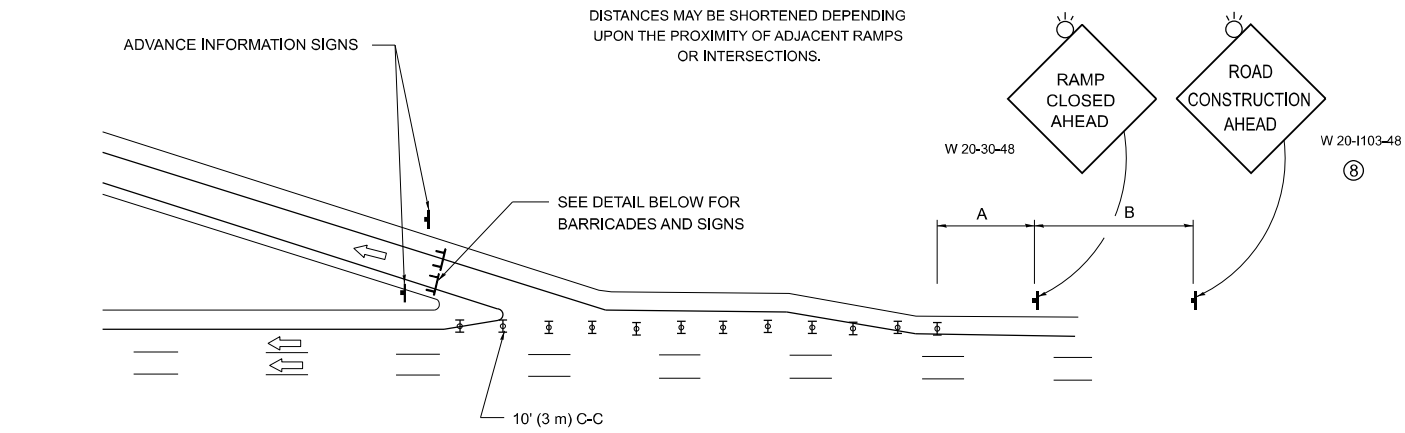


ENTRANCE RAMP CLOSURE

SIGN SPACING TABLE

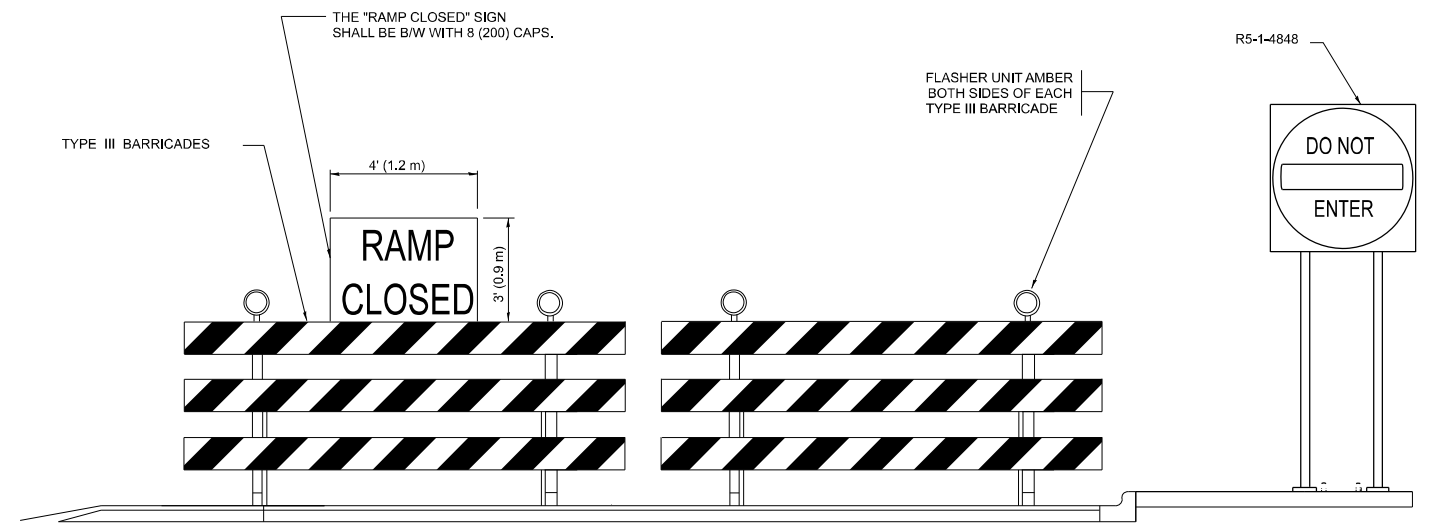
FACILITY	DISTANCE BETWEEN SIGNS	
	A	B
EXPRESSWAY >24 HOURS	1000' (300 m)	1500' (450 m)
EXPRESSWAY ≤24 HOURS	500' (150 m)	500' (150 m)
ARTERIAL 55 MPH	500' (150 m)	500' (150 m)
ARTERIAL 50-45 MPH	350' (100 m)	350' (100 m)
ARTERIAL <45 MPH	200' (60 m)	200' (60 m)

DISTANCES MAY BE SHORTENED DEPENDING UPON THE PROXIMITY OF ADJACENT RAMPS OR INTERSECTIONS.



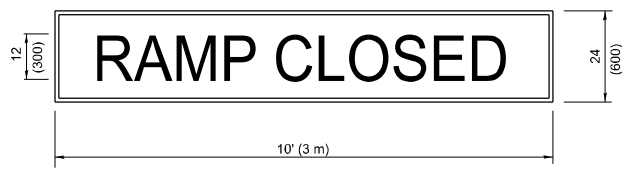
EXIT RAMP CLOSURE

- SYMBOLS**
- ▬ TYPE II BARRICADE OR DRUM
 - ▬ TYPE III BARRICADE WITH 2 FLASHING LIGHTS



DETAIL FOR REQUIRED BARRICADES & SIGNS

RAMP CLOSURE ADVANCE WARNING SIGN

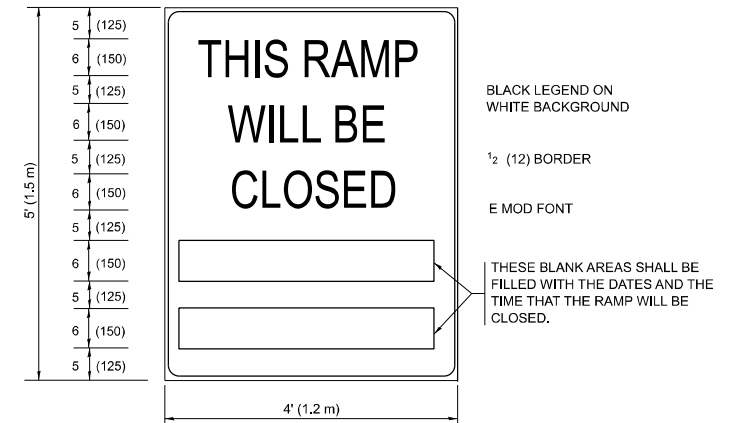


BLACK LEGEND ON ORANGE BACKGROUND MOUNTED DIAGONALLY
E MOD FONT
1 (25) BORDER

THESE SIGNS ARE REQUIRED ON ALL THE EXIT GUIDE SIGNS FOR EXIT RAMPS THAT WILL BE CLOSED FOR MORE THAN FOUR (4) CONSECUTIVE DAYS.

THESE SIGNS ARE REQUIRED ON BOTH SIDES OF THE RAMP, MINIMUM OF 1 WEEK IN ADVANCE OF THE CLOSURE.
THESE SIGNS SHALL BE FABRICATED AND PAID FOR ACCORDING TO THE TEMPORARY INFORMATION SIGNING SPECIAL PROVISION

RAMP CLOSURE ADVANCE INFORMATION SIGN



BLACK LEGEND ON WHITE BACKGROUND
1/2 (12) BORDER
E MOD FONT

THESE BLANK AREAS SHALL BE FILLED WITH THE DATES AND THE TIME THAT THE RAMP WILL BE CLOSED.

GENERAL NOTES:

- 1 CONES MAY BE SUBSTITUTED FOR DRUMS OR TYPE II BARRICADES DURING DAY OPERATIONS. CONES SHALL BE A MINIMUM OF 28 (700) HIGH.
- 2 VERTICAL BARRICADES SHALL NOT BE USED FOR RAMP CLOSURES.
- 3 A FLAGGER SHALL BE POSITIONED AT EACH CLOSED RAMP THAT IS OPEN TO CONSTRUCTION VEHICLES, PRECEDED BY A W20-7 FLAGGER WARNING SIGN.
- 4 ALL ROUTE MARKERS AND TRAILBLAZER ASSEMBLIES WHICH DIRECT MOTORISTS TO A CLOSED ENTRANCE RAMP SHALL BE COVERED WHEN THE RAMP IS CLOSED FOR MORE THAN FOUR (4) DAYS.
- 5 THE SIGNING AND BARRICADING WHICH IS REQUIRED BY THIS DETAIL SHALL BE INCLUDED IN THE COST OF TRAFFIC CONTROL AND PROTECTION (EXPRESSWAYS).
- 6 AUTHORIZATION FROM THE DISTRICT'S BUREAU OF TRAFFIC IS REQUIRED FOR ALL RAMP CLOSURES.
- 7 THE RAMP CLOSURE ADVANCE INFORMATION SIGNS SHALL BE ERECTED IF THE CLOSURE TIME EXCEEDS TWENTY-FOUR (24) HOURS. ADDITIONAL ADVANCE WARNING SIGNS ON EXIT GUIDE SIGNING WILL BE REQUIRED FOR EXIT RAMP CLOSURES THAT EXCEED FOUR (4) DAYS IN LENGTH
- 8 ROAD CONSTRUCTION AHEAD SIGNS MAY BE OMITTED WHEN THIS DETAIL IS USED IN CONJUNCTION WITH OTHER TRAFFIC CONTROL THAT ALREADY INCLUDES A ROAD CONSTRUCTION AHEAD SIGN.
- 9 ARTERIAL ROAD CONSTRUCTION AHEAD SIGNS SHALL BE INSTALLED ON THE LEFT SIDE OF TRAFFIC IF THE MEDIAN IS MORE THAN 10 FT WIDE.

ALL DIMENSIONS ARE IN INCHES (MILLIMETERS) UNLESS OTHERWISE SHOWN.

MODEL: TC-08 (Sheet) FILE NAME: c:\p\work\wvictor\guillaume\p\0907146\108124-shh-DistStds.dgn

USER NAME = Fritz,Guillaume	DESIGNED - D.W.S.	REVISED - S.P.B._01-07
PLOT SCALE = 0.16666833' / in.	DRAWN -	REVISED - S.P.B._12-09
PLOT DATE = 11/15/2023	CHECKED -	REVISED - M.D._06-13
	DATE - 02-83	REVISED - M.D._01-18

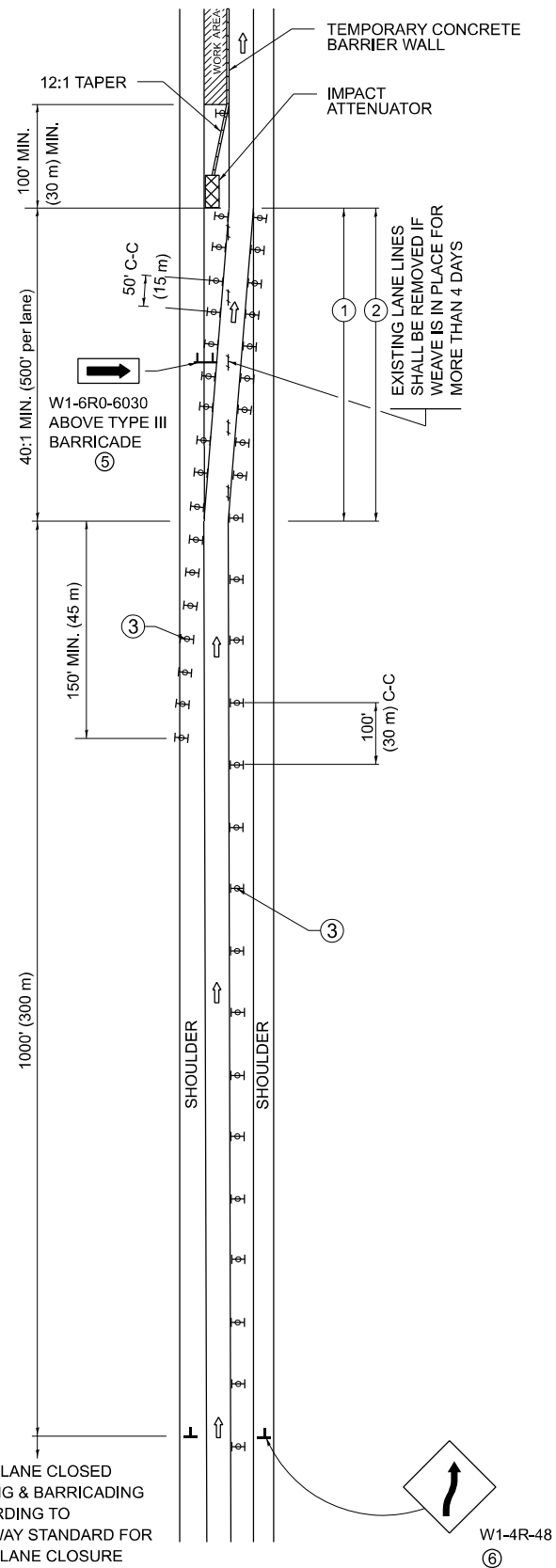
**STATE OF ILLINOIS
DEPARTMENT OF TRANSPORTATION**

**ENTRANCE AND EXIT RAMP
CLOSURE DETAILS**

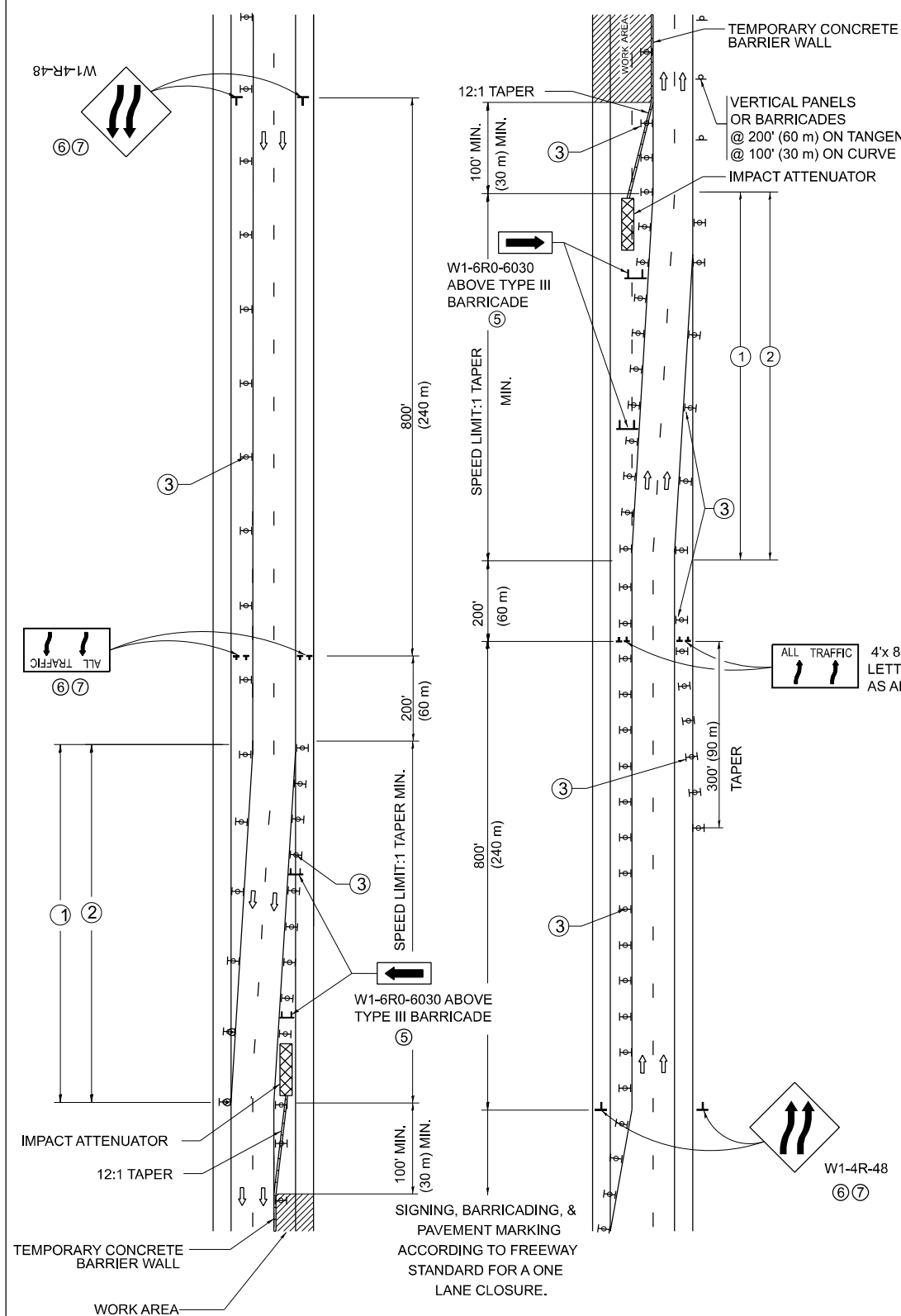
SCALE: NONE SHEET 1 OF 1 SHEETS STA. TO STA.

FAI RTE.	SECTION	COUNTY	TOTAL SHEETS	SHEET NO.
290	FAI 290 23 PATCH	COOK	14	8
TC-08			CONTRACT NO. 62W04	
ILLINOIS FED. AID PROJECT				

SINGLE LANE WEAVE



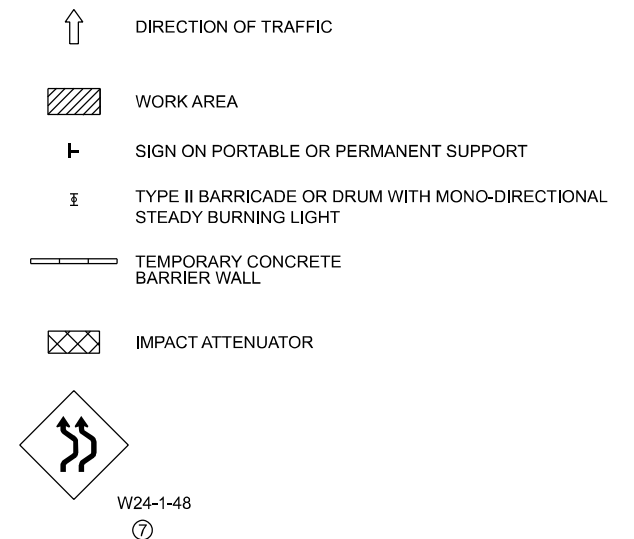
MULTI-LANE WEAVE



GENERAL NOTES:

- EXISTING CONFLICTING PAVEMENT MARKING LINES SHALL BE REMOVED. PAVEMENT MARKING REMOVAL SHALL NOT BE REQUIRED FOR SINGLE LANE WEAVES UNDER 4 DAYS IN DURATION.
- CONTINUOUS REFLECTIVE TEMPORARY PAVEMENT MARKING TAPE SHALL BE PLACED THROUGHOUT THE TAPER AND FOR 300' (90 m) ALONG SIDE THE WORK AREA WHERE THE CLOSURE TIME IS GREATER THAN FOURTEEN DAYS. THE LEFT EDGE LINE SHALL BE YELLOW AND THE RIGHT EDGE LINE SHALL BE WHITE. FOR MULTI-LANE WEAVES LANE LINES SHALL BE 5 INCH, 10'-30' (3 m-9 m) SKIP DASH, WHITE.
- PLASTIC DRUMS WITH STEADY BURN LIGHTS AT 50' (15 m) C-C SPACING IN TAPERS AND 100' (30 m) C-C SPACING IN TANGENTS.
- ALL SIGNS SHALL BE POST MOUNTED IF THE CLOSURE TIME EXCEEDS FOUR DAYS.
- TYPE III BARRICADES MAY BE OMITTED FOR SINGLE-LANE WEAVES UNDER 24-HOURS IN DURATION. W1-6 SIGNS WILL STILL BE REQUIRED. IF THE WIDTH OF OFFSET IS LESS THAN 6' THEN THE TYPE III BARRICADE WITH ATTACHED ARROW SIGN PANEL CAN BE ELIMINATED IN THE TAPER AREAS.
- WHEN THE LENGTH OF THE SHIFTED SEGMENT (DISTANCE BETWEEN WEAVE POINTS) IS LESS THAN 1500', DOUBLE REVERSE CURVE SIGNS (W24-1) SHOULD BE USED INSTEAD OF THE REVERSE CURVE (W1-4) SIGNS. ARROWS ON THE 4'X8' "ALL TRAFFIC" SIGNS SHALL BE THE SAME SHAPE.
- THE NUMBER OF ARROWS ON THESE SIGNS SHALL MATCH THE NUMBER OF LANES OPEN TO TRAFFIC.

SYMBOLS



ALL DIMENSIONS ARE IN INCHES (MILLIMETERS) UNLESS OTHERWISE SHOWN

MODEL: TC-09 (Sheet)
FILE NAME: c:\p\work\vw\stg\guillaume\p\0907146\1081214-shh-Dhs\Stds.dgn

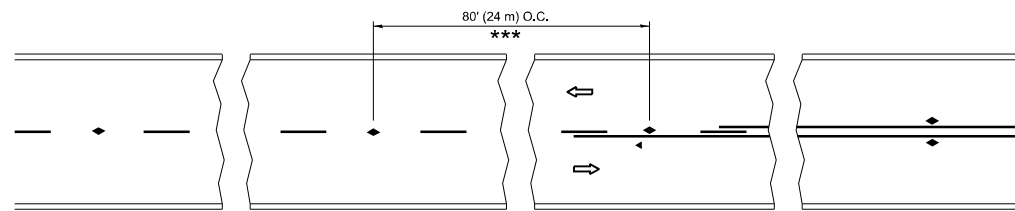
USER NAME = Fritz,Guillaume	DESIGNED - D.W.S.	REVISED - J.A.F. 02-06
PLOT SCALE = 0.16666633' / in.	CHECKED -	REVISED - S.P.B. 01-07
PLOT DATE = 12/19/2023	DATE - 02-87	REVISED - S.P.B. 12-09
		REVISED - M.D. 06-13

STATE OF ILLINOIS
DEPARTMENT OF TRANSPORTATION

TRAFFIC CONTROL DETAILS FOR
FREEWAY SINGLE & MULTI-LANE WEAVE

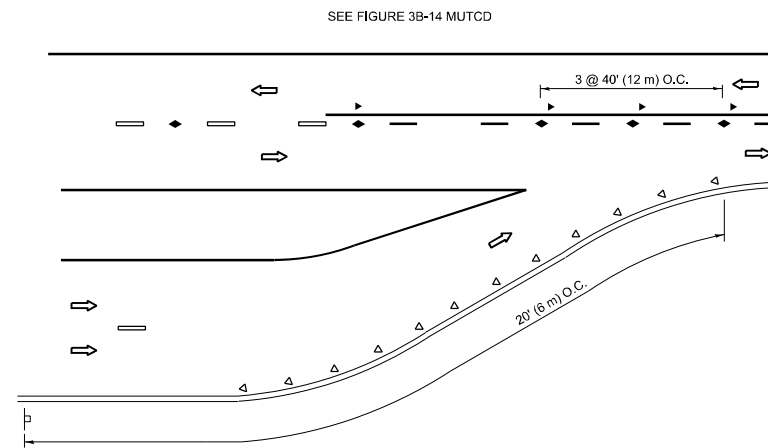
SCALE: NONE SHEET 1 OF 1 SHEETS STA. TO STA.

F.A.I. RTE.	SECTION	COUNTY	TOTAL SHEETS	SHEET NO.
290	FAI 290 23 PATCH	COOK	14	9
TC-09		CONTRACT NO. 62W04		
ILLINOIS FED. AID PROJECT				

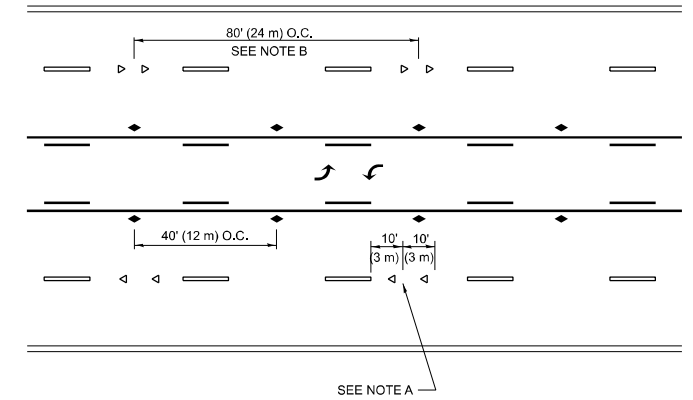


*** REDUCE TO 40' (12 m) O.C. ON CURVES WITH POSTED OR ADVISORY SPEED 45 M.P.H. (70 km/h) OR LESS.

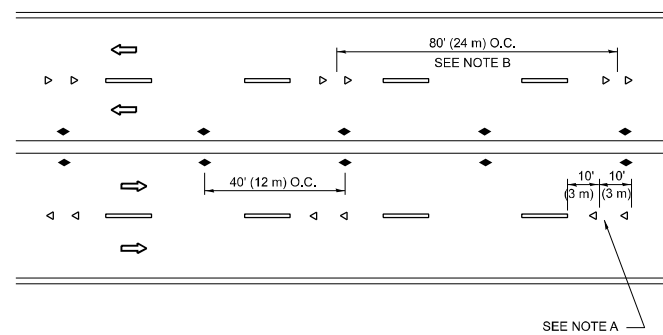
TWO-LANE/TWO-WAY



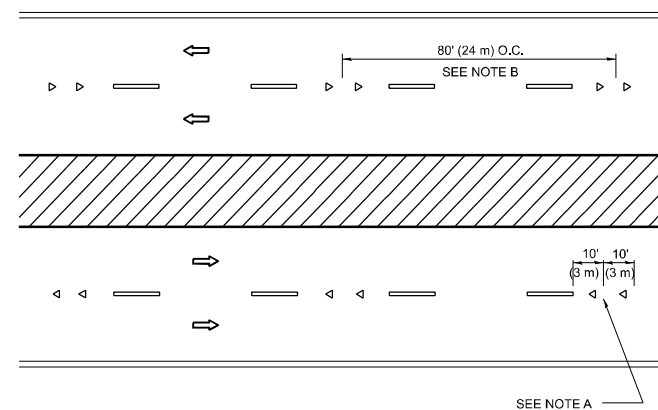
LANE REDUCTION TRANSITION



TWO-WAY LEFT TURN



MULTI-LANE/UNDIVIDED



MULTI-LANE/DIVIDED

GENERAL NOTES

- MARKERS USED WITH DASHED LINES SHALL BE CENTERED IN THE GAP BETWEEN SEGMENTS.
- MARKERS USED ADJACENT TO SOLID LINES SHALL BE OFFSET 2 TO 3 (50 TO 75) TOWARD TRAFFIC AS SHOWN.
- MARKERS THROUGH TANGENTS LESS THAN 500' (150 m) IN LENGTH BETWEEN CURVES SHALL BE INSTALLED AT THE LESSER OF THE TWO CURVE SPACINGS.
- MARKERS ARE TO BE USED ADJACENT TO BOTH SOLID WHITE LINES IN DUAL LEFT TURN LANES

SYMBOLS

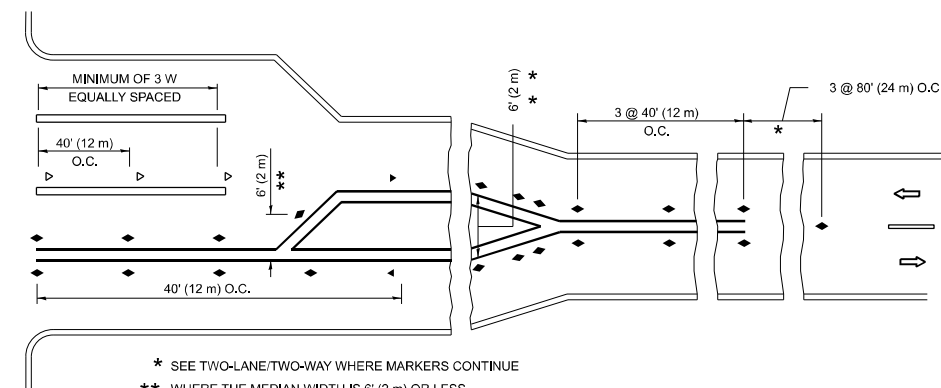
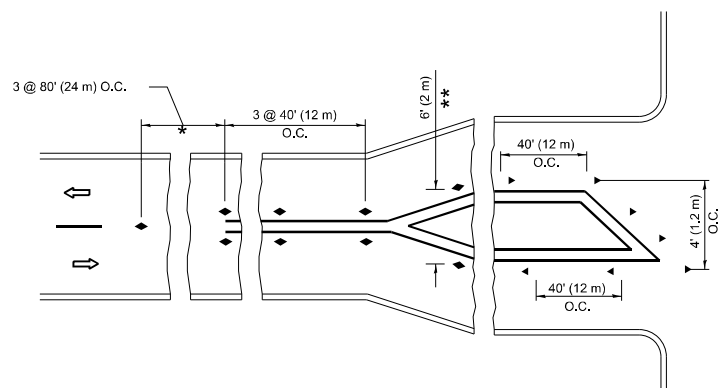
- YELLOW STRIPE
- WHITE STRIPE
- ◀ ONE-WAY AMBER MARKER
- ◀ ONE-WAY CRYSTAL MARKER (W/O)
- ◆ TWO-WAY AMBER MARKER

LANE MARKER NOTES

- USE DOUBLE LANE LINE MARKERS SPACED AS SHOWN.
- REDUCE TO 40' (12 m) O.C. ON CURVES WHERE ADVISORY SPEEDS ARE 10 M.P.H (20 km/h) LOWER THAN POSTED SPEEDS.

DESIGN NOTES

- DOUBLE LANE LINE MARKERS SHALL BE USED UNLESS SPECIFIED OTHERWISE.
- EXCEPT AS SHOWN ON THE LANE REDUCTION TRANSITION AND FREEWAY EXIT RAMP DETAIL, MARKERS ARE NOT TO BE SPECIFIED ON RIGHT EDGE LINES.
- THE EXACT MARKER LIMITS, SPACING, AND COLOR SHALL BE INCLUDED IN THE PLANS WHEN STANDARD SPECIFICATIONS ARE NOT BEING USED.
- MARKERS SHOULD NOT BE USED ALONGSIDE CURBS EXCEPT FOR EXTREMELY SHORT SECTIONS OF CURBS WHERE NOT MORE THAN TWO MARKERS WOULD BE INVOLVED.



* SEE TWO-LANE/TWO-WAY WHERE MARKERS CONTINUE
 ** WHERE THE MEDIAN WIDTH IS 6' (2 m) OR LESS USE TWO-WAY MARKERS.

TURN LANES

All dimensions are in inches (millimeters) unless otherwise shown.

MODEL: TC-11 (Sheet)
 FILE NAME: c:\p\work\guillaume\p0907146\108124-shb-Dist-Stds.dgn

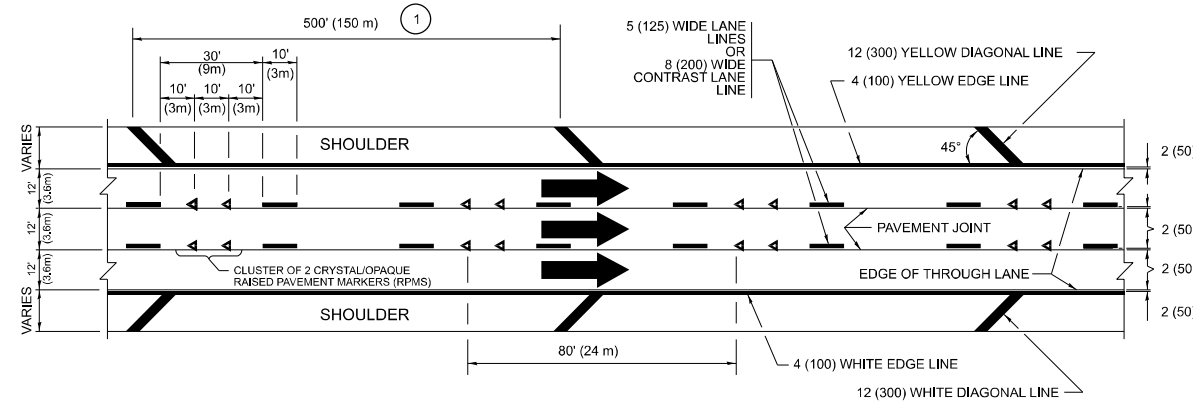
USER NAME = Fritz,Guillaume	DESIGNED -	REVISED - T. RAMMACHER 03-12-99
PLOT SCALE = 0.16666833" / in.	DRAWN -	REVISED - T. RAMMACHER 01-06-00
PLOT DATE = 12/19/2023	CHECKED -	REVISED - C. JUCIUS 09-09-09
	DATE -	REVISED - C. JUCIUS 07-01-13

STATE OF ILLINOIS
 DEPARTMENT OF TRANSPORTATION

TYPICAL APPLICATIONS
 RAISED REFLECTIVE PAVEMENT MARKERS (SNOW-PLOW RESISTANT)

F.A.I. RTE.	SECTION	COUNTY	TOTAL SHEETS	SHEET NO.
290	FAI 290 23 PATCH	COOK	14	10
TC-11			CONTRACT NO. 62W04	
ILLINOIS FED. AID PROJECT				

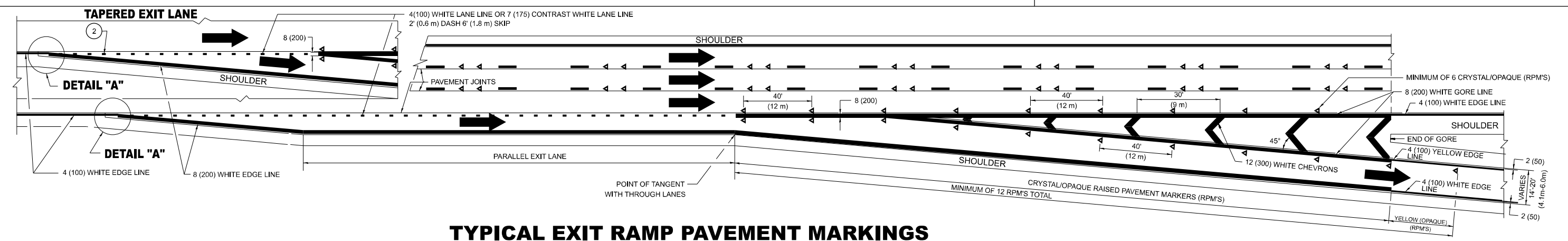
SCALE: NONE SHEET 1 OF 1 SHEETS STA. TO STA.



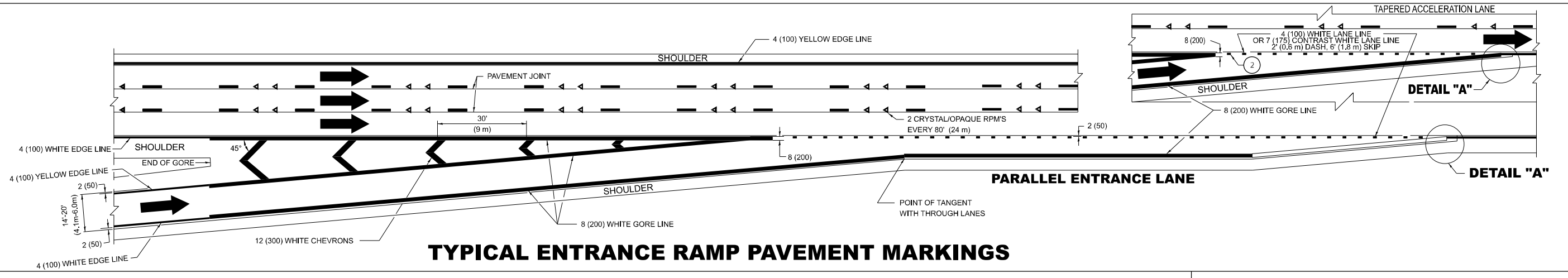
TYPICAL EDGE LINES & LANE LINES

PAVEMENT MARKING MATERIALS

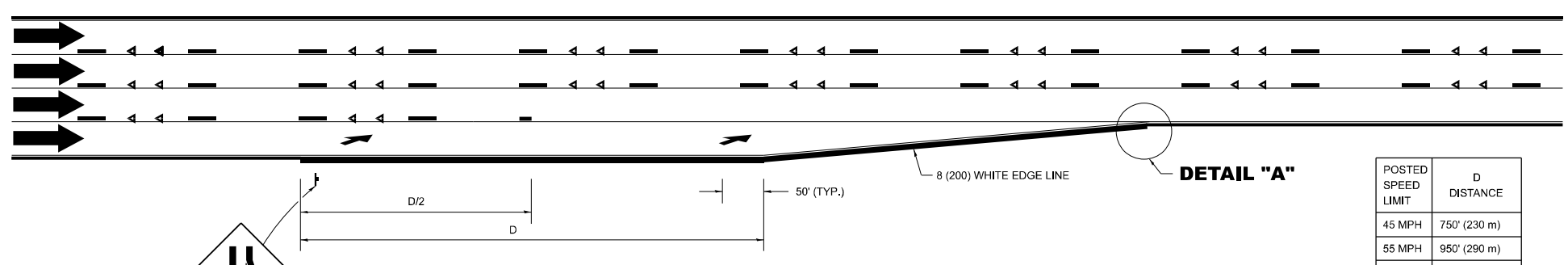
1. THERMOPLASTIC PAVEMENT MARKING LINE SHALL BE USED FOR ALL EDGE LINES, GORE LINES, AND DIAGONAL LINES ON HMA PAVEMENTS.
2. POLYUREA OR MODIFIED URETHANE PAVEMENT MARKING LINE SHALL BE USED FOR ALL EDGE LINES, GORE LINES, AND DIAGONAL LINES ON PCC PAVEMENTS.
3. PREFORMED PLASTIC PAVEMENT MARKING LINE TYPE B, INLAID OR GROOVE IN, SHALL BE USED FOR ALL LANE LINES ON HMA PAVEMENTS.
4. CONTRAST PREFORMED PLASTIC PAVEMENT MARKING LINE TYPE B, GROOVE IN, SHALL BE USED FOR ALL LANE LINES ON PCC PAVEMENT.



TYPICAL EXIT RAMP PAVEMENT MARKINGS

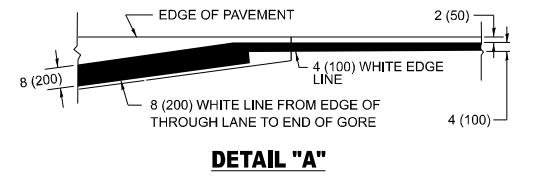


TYPICAL ENTRANCE RAMP PAVEMENT MARKINGS



LANE REDUCTION PAVEMENT MARKINGS

POSTED SPEED LIMIT	D DISTANCE
45 MPH	750' (230 m)
55 MPH	950' (290 m)
65 MPH	1200' (365 m)



- NOTES:**
- ① THE DIAGONAL LINES SHALL BE SPACED AT 40' (12 m) C-C ACROSS ALL STRUCTURES WHICH ARE 500' (150 m) OR LESS IN LENGTH. THE DIAGONAL LINES ARE NOT REQUIRED ON SHOULDERS WHICH ARE 6' (1.8 m) OR LESS IN WIDTH.
 - ② 4" (2' DASH, 6' SKIP) MARKING ON TAPERED ENTRANCE AND EXIT RAMP SHALL BE OMITTED ON TANGENT SECTIONS.

MODEL: TC-12a (Sheet)
FILE NAME: c:\p\work\pav\guillaume\p0907146\1081214-shd-Dist-Stds.dgn

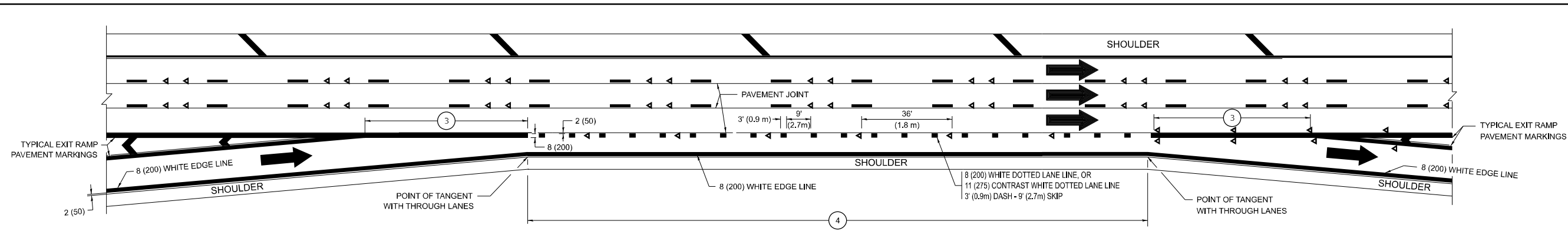
USER NAME = Fritz,Guillaume	DESIGNED - D.W.S.	REVISED - S.P.B. 01-07
PLOT SCALE = 0.16666833' / in.	DRAWN -	REVISED - S.P.B. 01-10
PLOT DATE = 12/19/2023	CHECKED -	REVISED - M.D. 05-13
	DATE - 01-90	REVISED - M.D. 09-17

STATE OF ILLINOIS
DEPARTMENT OF TRANSPORTATION

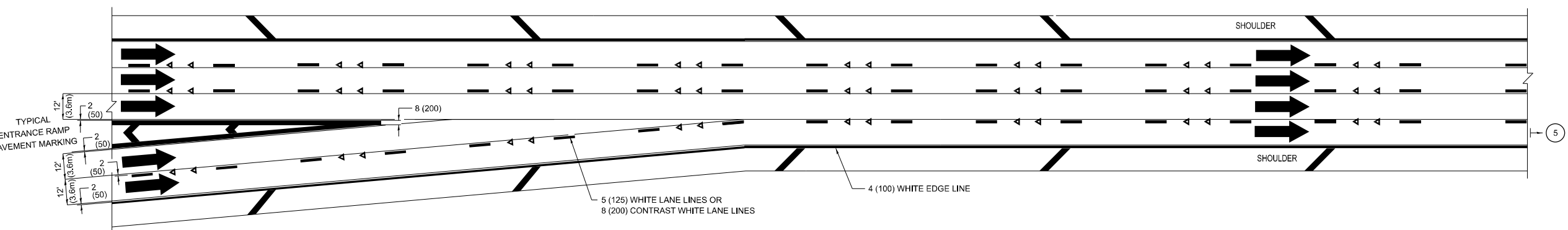
MULTI-LANE FREEWAY
PAVEMENT MARKING DETAILS

SCALE: NONE SHEET 1 OF 2 SHEETS STA. TO STA.

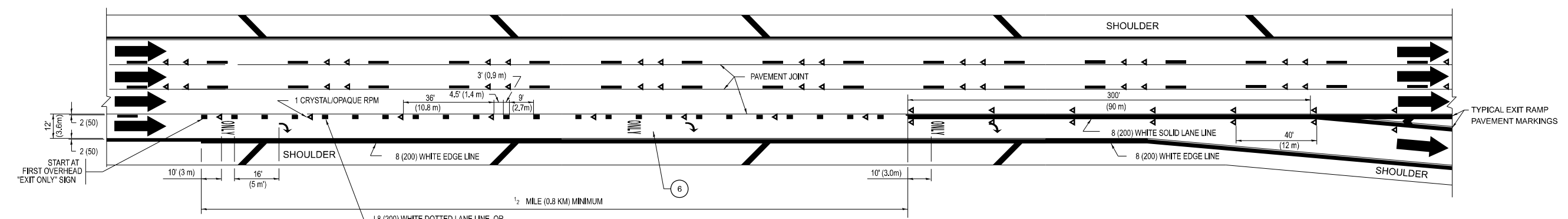
FAI RTE.	SECTION	COUNTY	TOTAL SHEETS	SHEET NO.
290	FAI 290 23 PATCH	COOK	14	11A
TC-12		CONTRACT NO. 62W04		
ILLINOIS FED. AID PROJECT				



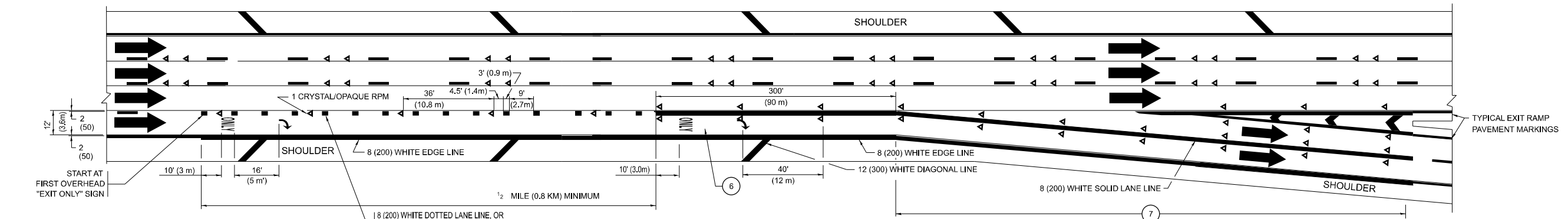
AUXILIARY LANE MARKINGS



TWO LANE ENTRANCE RAMP WITH MERGE MARKINGS



EXIT ONLY LANE MARKINGS



EXIT ONLY WITH OPTION LANE MARKINGS

- NOTES:**
- 3 OMIT WHEN LENGTH OF AUXILIARY LANE IS LESS THAN 500' (150 m).
 - 4 8-INCH WIDE DOTTED LANE LINE MARKINGS SHALL BE USED WHEN THE LENGTH OF THE AUXILIARY LANE IS 2 MILES OR LESS.
 - 5 FOR TWO-LANE ENTRANCE RAMP, IF RIGHT LANE ENDS, USE TYPICAL ENTRANCE RAMP PAVEMENT MARKINGS.
 - 6 ONLY AND ARROWS EQUALLY SPACED, 500' (150 m) MAXIMUM SPACING. FULL SIZE LETTERS AND ARROW SHALL BE USED..
 - 7 CONTINUE 8" SOLID LANE LINE THROUGH EXIT TO END OF PAVED GORE.

MODEL: TC-12b (Sheet) FILE NAME: c:\pik_work\pav\guillaume\p0007146\1081214-shh-Dist-Stds.dgn

USER NAME = Fritz,Guillaume	DESIGNED - D.W.S.	REVISED - J.A.F. 02-06
PLOT SCALE = 0.16666833 / in.	CHECKED -	REVISED - S.P.B. 01-07
PLOT DATE = 12/19/2023	DATE - 01-90	REVISED - S.P.B. 01-10
		REVISED - M.D. 09-17

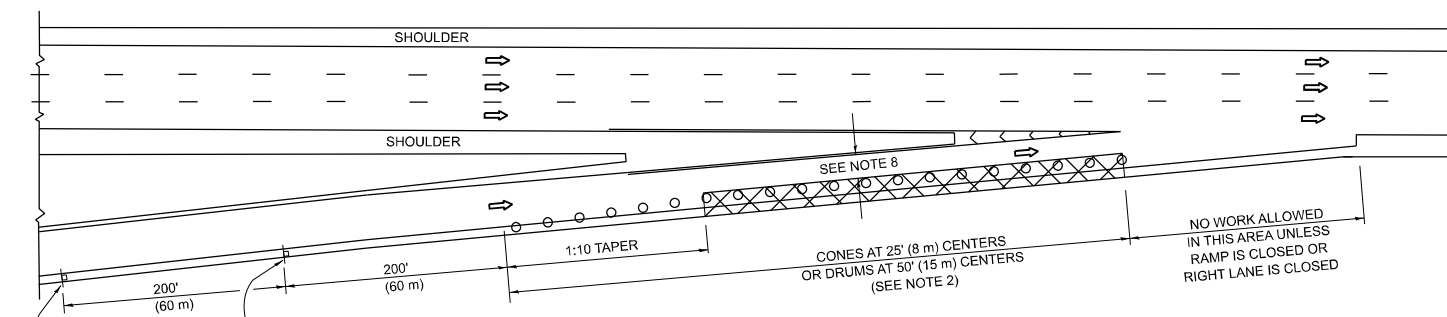
STATE OF ILLINOIS
DEPARTMENT OF TRANSPORTATION

MULTI-LANE FREEWAY
PAVEMENT MARKING DETAILS

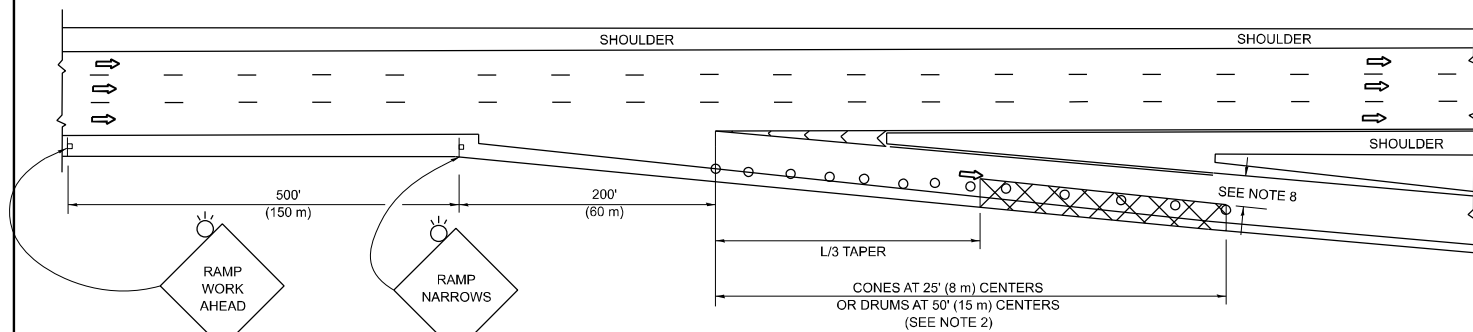
SCALE: NONE SHEET 2 OF 2 SHEETS STA. TO STA.

F.A.I. RTE.	SECTION	COUNTY	TOTAL SHEETS	SHEET NO.
290	FAI 290 23 PATCH	COOK	14	11B
TC-12		CONTRACT NO. 62W04		
ILLINOIS FED. AID PROJECT				

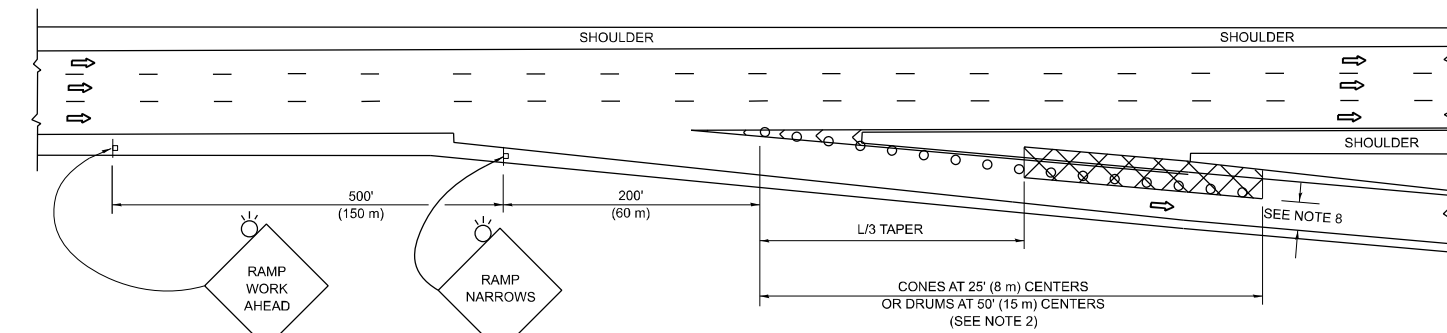
PARTIAL RAMP CLOSURE DETAILS



TYPICAL ENTRANCE RAMP



TYPICAL EXIT RAMP



TYPICAL EXIT RAMP

SYMBOLS

- ACTIVE WORK AREA
- SIGN ON PORTABLE OR PERMANENT SUPPORT
- FLAGGER WITH CONTROL SIGN
- TYPE II BARRICADE OR DRUM
- CONE, DRUM OR BARRICADE
- IMPACT ATTENUATOR OF TYPE AND TEST LEVEL SPECIFIED

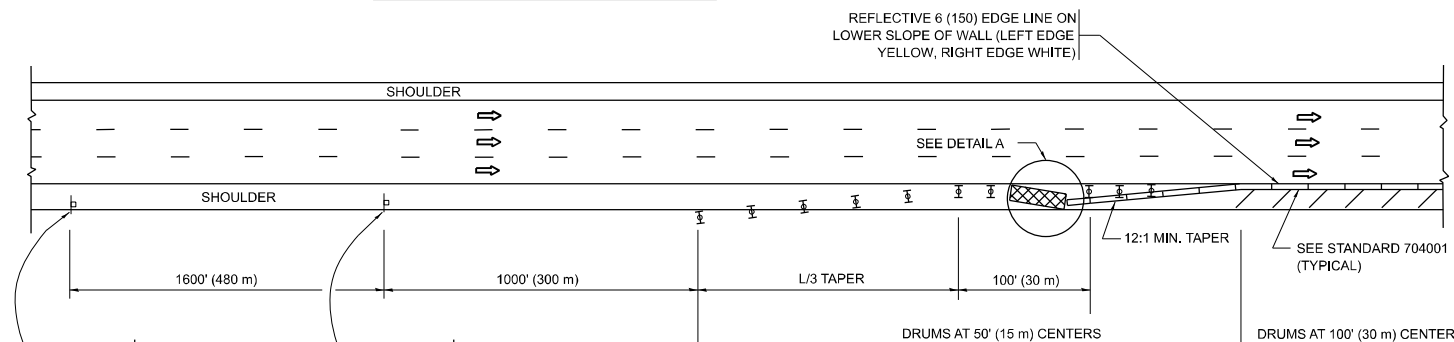
GENERAL NOTES:

- THE "L" DISTANCE EQUALS:

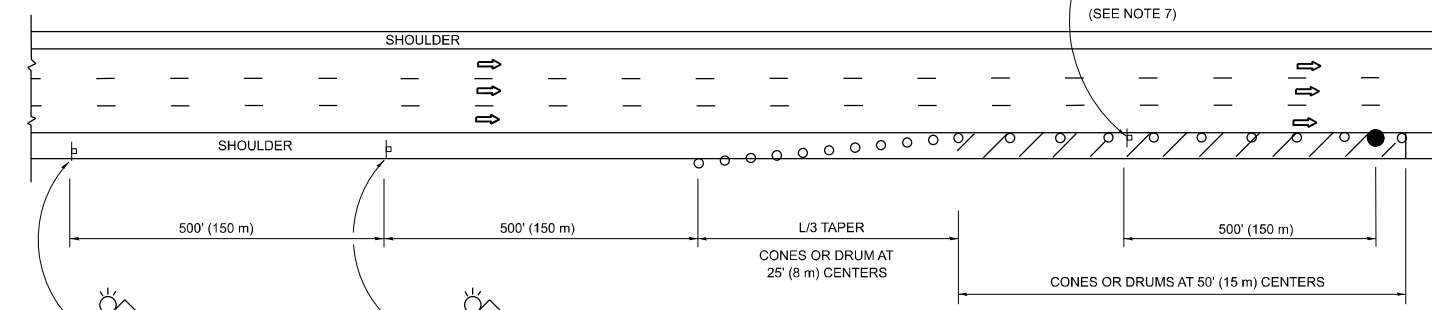
SPEED LIMIT	FORMULAS
45 mph (80 km/h)	METRIC ENGLISH
OR GREATER:	$L=0.65(W)(S)$ $L=(W)(S)$

W = WIDTH OF OFFSET IN FEET (METERS)
 S = NORMAL POSTED SPEED MPH (KM/H)
- TYPE II BARRICADES OR DRUMS ARE REQUIRED FOR ALL NIGHTTIME CLOSURES. TYPE II BARRICADES OR DRUMS WITH MONODIRECTIONAL STEADY BURN LIGHTS ARE REQUIRED FOR DELINEATING OBSTACLES, EXCAVATIONS, OR HAZARDS EXCEEDING 100 FT (30m) IN LENGTH AT NIGHT.
- ALL SIGNS SHALL BE POST MOUNTED IF THE CLOSURE TIME EXCEEDS FOUR DAYS.
- FLASHING LIGHTS SHALL BE USED DURING THE HOURS OF DARKNESS AND SHALL BE INSTALLED ABOVE THE FIRST TWO SETS OF SIGNS.

SHOULDER CLOSURE DETAILS

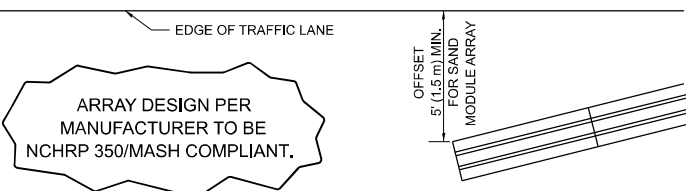


PERMANENT SHOULDER CLOSURE



TEMPORARY SHOULDER CLOSURE

THIS DETAIL IS USED WHERE:
 1. VEHICLES, EQUIPMENT, WORKERS OR THEIR ACTIVITIES ENCR OACH IN AN AREA CLOSER THAN 15' (4.5 m) TO THE EDGE OF PAVEMENT FOR A PERIOD IN EXCESS OF 15 MINUTES.



**DETAIL "A"
 IMPACT ATTENUATOR, TEMPORARY
 (SEE NOTE 5)**

- THE IMPACT ATTENUATOR, TEMPORARY IS NOT REQUIRED WHEN THE TEMPORARY CONCRETE BARRIER WALL IS PROTECTED BY OR IS TIED INTO THE EXISTING GUARDRAIL. IF OFFSET IS LESS THAN 5 FEET USE NARROW USE TYPE DEVICE TO MEET NCHRP350/MASH.
- AUTHORIZATION FROM THE DISTRICT'S BUREAU OF TRAFFIC IS REQUIRED FOR ALL FREEWAY CLOSURES.
- THE FLAGGER AND FLAGGER SIGN ARE REQUIRED AT THE ABOVE WORK SITES WHEN:
 - FOUR OR MORE WORK VEHICLES ENTER THE TRAFFIC LANES IN A ONE HOUR PERIOD.
 - THE WORK ACTIVITY REQUIRES FREQUENT ENCR OACHMENT INTO THE LANE OPEN TO TRAFFIC.
 THE FLAGGER SHALL BE STATIONED APPROXIMATELY 100' (30 m) TO 200' (60 m) IN ADVANCE OF THE WORKERS.
- 12' MIN. WIDTH TANGENT SECTION
 16' MIN. WIDTH CURVE SECTION.
- TEMPORARY SHOULDER AND NON-SYSTEM INTERCHANGE PARTIAL CLOSURES ARE ALLOWED WEEKDAYS BETWEEN 9:00 A.M. AND 3:00 P.M. AND BETWEEN 7:00 P.M. AND 5:00 A.M. OR AS APPROVED BY THE EXPRESSWAY TRAFFIC OPERATIONS ENGINEER. PERMANENT SHOULDER AND PARTIAL RAMP CLOSURES WILL ONLY BE PERMITTED IF CALLED FOR IN THE PLANS OR AS APPROVED BY THE EXPRESSWAY OPERATIONS ENGINEER.

ALL DIMENSIONS ARE IN INCHES (MILLIMETERS) UNLESS OTHERWISE SHOWN.

MODEL: TC-17 (Sheet)
 FILE NAME: c:\p\work\wv\wv\guillaume\0907146\0124-shd-Dist-Stds.dgn

USER NAME = Fritz,Guillaume	DESIGNED -	REVISED - S.P.B. 12-09
	DRAWN - D.W.S.	REVISED - M.D. 06-13
PLOT SCALE = 0.16666833 / in.	CHECKED -	REVISED - M.D. 01-18
PLOT DATE = 12/19/2023	DATE - 11-96	REVISED - M.D. 10-20

**STATE OF ILLINOIS
 DEPARTMENT OF TRANSPORTATION**

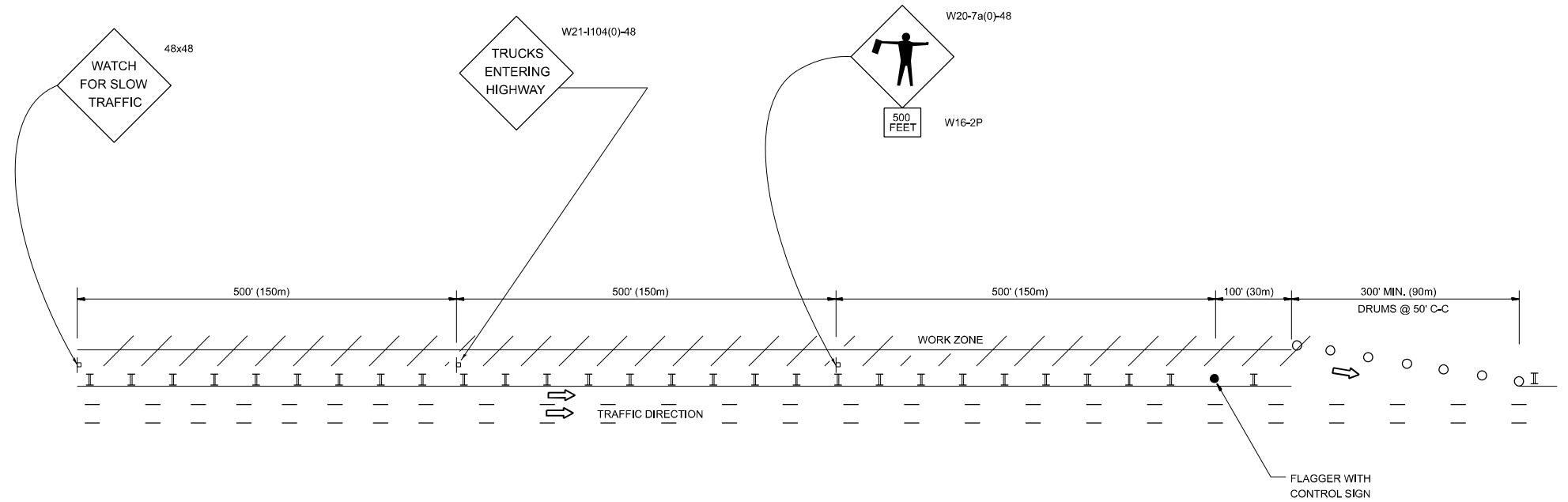
**TRAFFIC CONTROL DETAILS FOR FREEWAY
 SHOULDER CLOSURES AND PARTIAL RAMP CLOSURES**

SCALE: NONE SHEET 1 OF 1 SHEETS STA. TO STA.

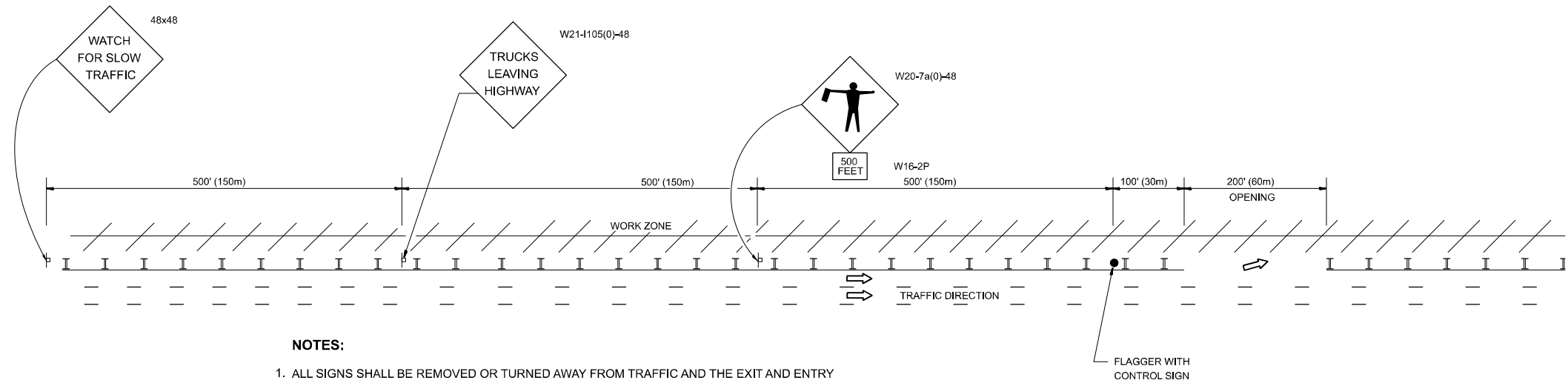
F.A.I. RTE.	SECTION	COUNTY	TOTAL SHEETS	SHEET NO.
290	FAI 290 23 PATCH	COOK	14	12
TC-17			CONTRACT NO.	
ILLINOIS FED. AID PROJECT				

SIGNING FOR FLAGGING OPERATIONS AT WORK ZONE OPENINGS

WORK ZONE EXIT OPENING



WORK ZONE ENTRY OPENING



NOTES:

1. ALL SIGNS SHALL BE REMOVED OR TURNED AWAY FROM TRAFFIC AND THE EXIT AND ENTRY OPENINGS SHALL BE CLOSED WHEN THE FLAGGING OPERATION CEASES. NON OPERATING EQUIPMENT SHALL COMPLY WITH ARTICLE 701.11
2. WORK ZONE OPENINGS SHALL BE A MINIMUM OF ONE HALF MILE APART AND A MINIMUM OF ONE QUARTER MILE FROM ALL ENTRANCE AND EXIT RAMPS.
3. EXITING THE WORK ZONE AT ANY PLACE OTHER THAN AT A WORK ZONE EXIT OPENING WILL BE PROHIBITED.
4. ALL VEHICLES SHALL ENTER THE WORK ZONE AT ENTRY OPENINGS, USING THEIR TURN SIGNALS TO WARN MOTORISTS
5. FLAGGERS SHALL NOT STOP TRAFFIC OR DIRECT TRAFFIC INTO AN ADJACENT LANE.

ALL DIMENSIONS ARE IN INCHES (MILLIMETERS) UNLESS OTHERWISE SHOWN

MODEL: TC-18 (Sheet)
FILE NAME: c:\p\work\williams\guillaume\p\0907146\ID1081214-shb-DistSigs.dgn

USER NAME = Fritz,Guillaume	DESIGNED -
DRAWN -	
PLOT SCALE = 0.16666833 / in.	CHECKED -
PLOT DATE = 12/19/2023	DATE -

REVISED - J.A.F. 02-06
REVISED - S.P.B. 01-07
REVISED - S.P.B. 12-09
REVISED - M.D.06-13

**STATE OF ILLINOIS
DEPARTMENT OF TRANSPORTATION**

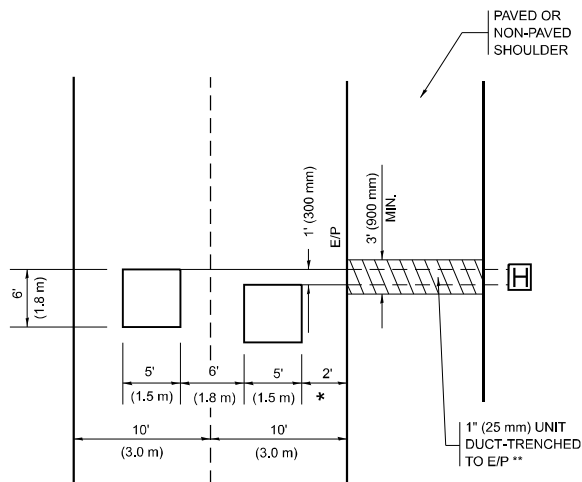
**FREEWAY / EXPRESSWAY SIGNING FOR FLAGGING OPERATIONS
AT WORK ZONE OPENINGS ON FREEWAYS / EXPRESSWAYS**

SCALE: NONE SHEET 1 OF 1 SHEETS STA. TO STA.

F.A.I RTE.	SECTION	COUNTY	TOTAL SHEETS	SHEET NO.
290	FAI 290 23 PATCH	COOK	14	13
TC-18			CONTRACT NO. 62W04	
ILLINOIS FED. AID PROJECT				

LOOPS NEXT TO SHOULDERS

PROVIDE A PAVEMENT REPLACEMENT NOTE WHICH SHOULD EQUAL 3' (900 mm) X WIDTH OF PAVED SHOULDER.



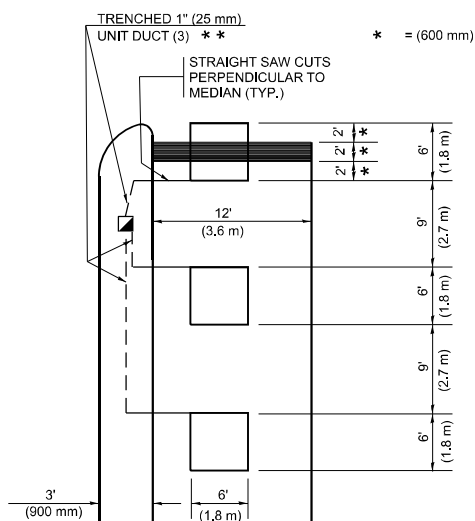
* = (600 mm)

** UNIT DUCT IS TO BE SHOWN ON PLAN SHEETS BUT SHALL NOT BE INCLUDED IN THE PAY ITEMS.

LEFT TURN LANES WITH MEDIANS

VOLUME DENSITY ("FAR OUT" DETECTION) ON SAME APPROACH (PROTECTED / PERMITTED LEFT TURN PHASING)

HANDHOLE LOCATION MAY VARY DEPENDING ON GEOMETRICS AND DESIGN OF TRAFFIC SIGNALS. HEAVY-DUTY HANDHOLES TO BE USED WHEN THE MEDIAN IS MOUNTABLE. REFER TO STANDARD 814001 TO ENSURE THAT HANDHOLE FITS IN MEDIAN.



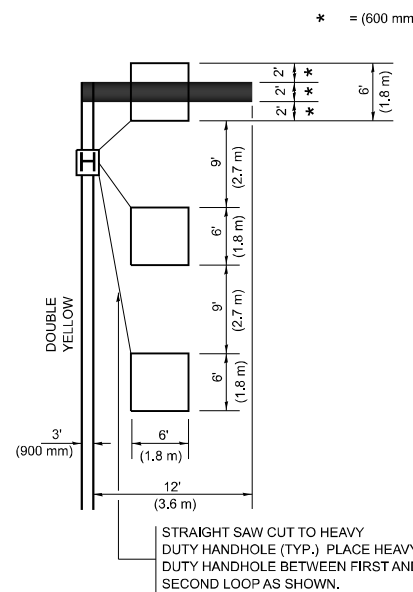
* = (600 mm)

** UNIT DUCT IS TO BE SHOWN ON PLAN SHEETS BUT SHALL NOT BE INCLUDED IN THE PAY ITEMS.

NOTE: DUAL LEFT TURNS NOT SHOWN REFER TO PLAN SHEET FOR DETECTOR LOOP REPLACEMENT

LEFT TURN LANES WITHOUT MEDIANS

VOLUME DENSITY ("FAR OUT" DETECTION) ON SAME APPROACH (PROTECTED / PERMITTED LEFT TURN PHASING)



* = (600 mm)

NOTE: DUAL LEFT TURNS NOT SHOWN REFER TO PLAN SHEET FOR DETECTOR LOOP REPLACEMENT

NOTES:

VEHICLES LOOP DETECTORS

- * ALL LEAD IN CABLE SHALL BE TWO CONDUCTOR NO. 14 TWISTED, SHIELDED.
- * EACH DETECTOR LOOP SHALL HAVE ITS OWN SAW CUT FROM THE LOOP TO THE EDGE OF PAVEMENT OR TO A HANDHOLE IN THE PAVEMENT.
- * EACH DETECTOR LOOP SHALL HAVE ITS OWN ONE INCH (25 mm) UNIT DUCT BETWEEN THE EDGE OF PAVEMENT AND THE FIRST HANDHOLE OR JUNCTION BOX. EACH UNIT DUCT RUN SHALL BE SHOWN ON THE PLANS BY THE DESIGNER, BUT SHALL NOT BE PAID FOR SEPARATELY. THIS ITEM IS INCIDENTAL TO THE PAY ITEM FOR DETECTOR LOOPS.
- * ONE DIMENSION OF ALL DETECTOR LOOPS SHALL BE SIX FEET (1.8 m)
- * EACH LANE OF NON-LOCKING, PRESENCE DETECTION AND EACH LANE OF A DOUBLE LEFT TURN LANE REQUIRES A SEPARATE INDUCTIVE LOOP DETECTOR AND LEAD IN CABLE.
- * WHEN NON-LOCKING, PRESENCE DETECTION IS USED, MORE THAN ONE LOOP PER LANE IS REQUIRED BEHIND THE STOP BAR (i.e. 1-1/2, 1-3/4, 2).
- * WHEN SYSTEM LOOPS ARE REQUIRED ON AN APPROACH OF AN INTERSECTION, THE LOOPS USED FOR VOLUME DENSITY AND INTERSECTION TIMING SHALL ALSO BE USED AS SYSTEM DETECTORS. EACH ONE OF THESE TYPES OF LOOPS REQUIRES A SEPARATE TWO CONDUCTOR NO. 14 TWISTED SHIELDED CABLE AND A SEPARATE INDUCTIVE LOOP DETECTOR WHEN NEW CONTROLLERS ARE UTILIZED. THE DESIGNER SHALL LABEL THESE TYPES OF LOOPS AS "INTERSECTION AND SAMPLING (SYSTEM) DETECTORS" ON THE SIGNAL LAYOUT, THE INTERCONNECT PLAN AND THE SYSTEM CABLE PLAN. WHEN AN EXISTING CONTROLLER IS UTILIZED FOR THIS TYPE OF DETECTION, THE PAY ITEM "INDUCTIVE LOOP DETECTOR WITH SYSTEM OUTPUT" SHOULD BE USED.

PLACEMENT OF DETECTORS

THE FOLLOWING FIGURES REPRESENT THE MOST COMMON DETECTOR LOOP LOCATIONS AND SIZES. ADJUSTMENTS WILL BE NECESSARY FOR SPECIFIC GEOMETRIC CONSIDERATIONS.

LOCATIONS AND DEMENSIONS OF DETECTOR LOOPS ARE REQUIRED ON ALL SIGNAL LAYOUT PLAN SHEETS.

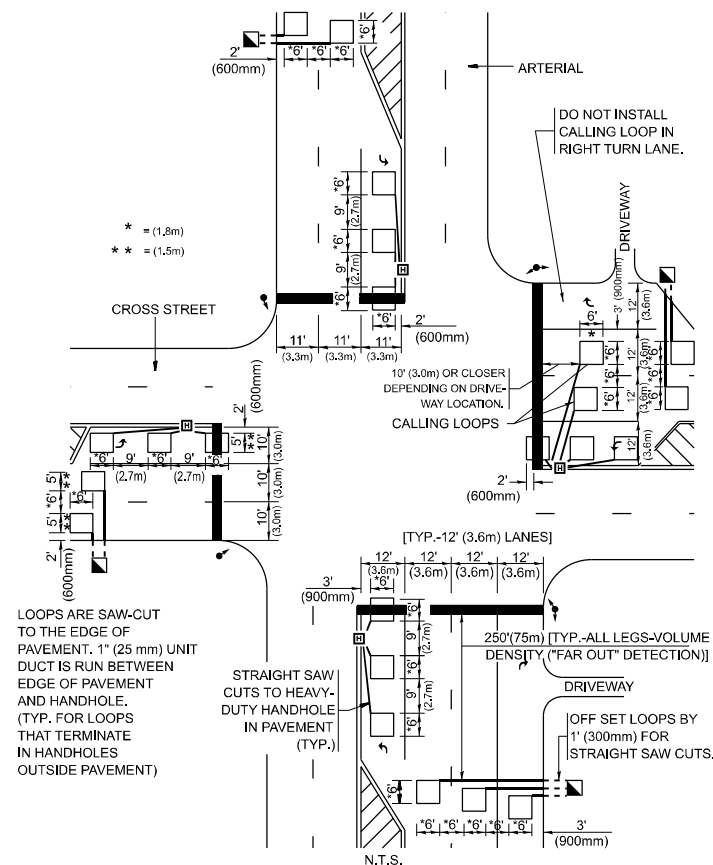
"FAR OUT" DETECTION REFERS TO LOCKING, PRESENCE TYPE DETECTION LOCATED IN THRU LANES, RIGHT TURN LANES, AND RIGHT TURN LANE TAPER AREAS (IF APPLICABLE), USUALLY 250' (75 m) IN ADVANCE OF STOP BARS. "UPTIGHT" DETECTION REFERS TO NON-LOCKING PRESENCE TYPE DETECTION LOCATED IN ALL LANES AND 10'-15' (3.0 m-4.5 m) BEHIND THE CROSSING STREET'S EDGE OF PAVEMENT EXTENDED.

NOTE:

ALL DETAILS AND NOTES SHOWN ARE FROM THE I.D.O.T. DISTRICT 1 TRAFFIC SIGNAL DESIGN GUIDELINES DATED JANUARY 1995

THIS DRAWING HAS BEEN PREPARED TO ASSIST THE RESIDENT ENGINEER FOR ALL ROADWAY RESURFACING OR S.M.A.R.T. PROJECTS WHERE THE DIMENSIONS ARE NOT SHOWN ON THE PLANS AND THE FINAL LOCATIONS FOR CROSSWALKS OR STOP BARS ARE NOT DETERMINED.

ARTERIAL-VOLUME DENSITY ("FAR OUT" DETECTION) CROSS STREET-NON VOLUME DENSITY ("FAR OUT" DETECTION)



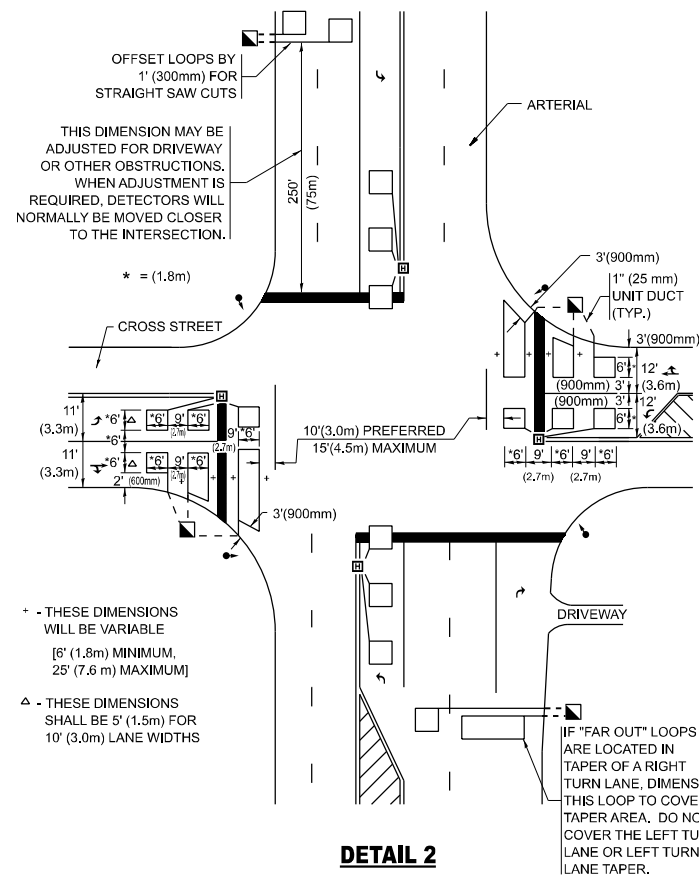
* = (1.8m)
** = (1.5m)

LOOPS ARE SAW-CUT TO THE EDGE OF PAVEMENT. 1" (25 mm) UNIT DUCT IS RUN BETWEEN EDGE OF PAVEMENT AND HANDHOLE. (TYP. FOR LOOPS THAT TERMINATE IN HANDHOLES OUTSIDE PAVEMENT)

STRAIGHT SAW CUTS TO HEAVY-DUTY HANDHOLE IN PAVEMENT (TYP.)

DETAIL 1
N.T.S.

ARTERIAL-VOLUME DENSITY ("FAR OUT" DETECTION) CROSS STREET-NON VOLUME DENSITY ("UPTIGHT" PRESENCE DETECTION)



OFFSET LOOPS BY 1' (300mm) FOR STRAIGHT SAW CUTS
THIS DIMENSION MAY BE ADJUSTED FOR DRIVEWAY OR OTHER OBSTRUCTIONS. WHEN ADJUSTMENT IS REQUIRED, DETECTORS WILL NORMALLY BE MOVED CLOSER TO THE INTERSECTION.

* = (1.8m)

* - THESE DIMENSIONS WILL BE VARIABLE [6' (1.8m) MINIMUM, 25' (7.6 m) MAXIMUM]
Δ - THESE DIMENSIONS SHALL BE 5' (1.5m) FOR 10' (3.0m) LANE WIDTHS

IF "FAR OUT" LOOPS ARE LOCATED IN TAPER OF A RIGHT TURN LANE, DIMENSION THIS LOOP TO COVER TAPER AREA. DO NOT COVER THE LEFT TURN LANE OR LEFT TURN LANE TAPER.

DETAIL 2
N.T.S.

STATE OF ILLINOIS
DEPARTMENT OF TRANSPORTATION

DISTRICT 1 - DETECTOR LOOP INSTALLATION
DETAILS FOR ROADWAY RESURFACING

SCALE: NONE SHEET 1 OF 1 SHEETS STA. TO STA.

USER NAME = Fritz,Guillaume	DESIGNED -	REVISED -
PLOT SCALE = 0.16666833' / in.	DRAWN -	REVISED -
PLOT DATE = 12/19/2023	CHECKED - R.K.F.	REVISED -
	DATE -	REVISED -

FAI RTE.	SECTION	COUNTY	TOTAL SHEETS	SHEET NO.
290	FAI 290 23 PATCH	COOK	14	14
TS-07		CONTRACT NO. 62W04		
ILLINOIS FED. AID PROJECT				