

STATE OF ILLINOIS
DEPARTMENT OF TRANSPORTATION

F.A.P. RTE.	SECTION	COUNTY	TOTAL SHEETS	SHEET NO.
758	3RS-5&(4,5)RS-3	PIATT	23	1
		ILLINOIS	CONTRACT NO. 70G74	

FOR INDEX OF SHEETS, SEE SHEET NO. 2
FOR SUMMARY OF QUANTITIES, SEE SHEET NO. 3 - 4

CURRENT TRAFFIC DATA				
FAP RTE 758 / (IL 32)				
	ADT (2023)	PV%	SU%	MU%
LEG "A"	= 1,300	79.8	3.1	17.3
LEG "B"	= 1,750	66.8	4.6	28.6

TRAFFIC DATA LOCATIONS	
LEG "A"	= IL 32 FROM IL 105 TO TR 353 IN LA PLACE
LEG "B"	= IL 32 FROM TR 353 IN LA PLACE TO US 36

FUNCTIONAL CLASSIFICATION	
MINOR ARTERIAL (RURAL)	

PROPOSED HIGHWAY PLANS

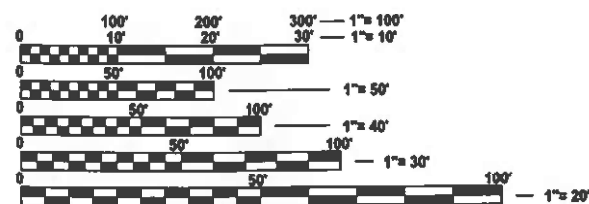
FAP ROUTE 758 / (IL 32)
SECTION 3RS-5&(4,5)RS-3
PROJECT STP-4X8N(886)
CAPE SEAL
PIATT COUNTY

C-95-046-23
0.1 MILE SOUTH OF IL 105 TO US 36



DESIGN DESIGNATION
NA

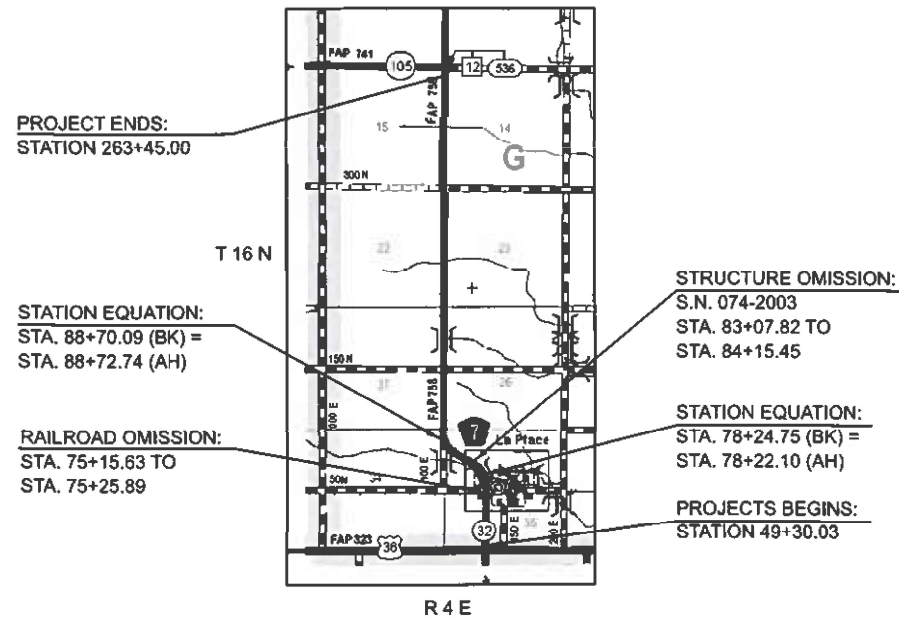
TOWNSHIPS: CERRO GORDO



FULL SIZE PLANS HAVE BEEN PREPARED USING STANDARD ENGINEERING SCALES. REDUCED SIZED PLANS WILL NOT CONFORM TO STANDARD SCALES. IN MAKING MEASUREMENTS ON REDUCED PLANS, THE ABOVE SCALES MAY BE USED.

J.U.L.I.E.
JOINT UTILITY LOCATION INFORMATION FOR EXCAVATION
1-800-892-0123
OR 811

PROJECT ENGINEER: JASON STULTS
SQUAD LEADER: GREG EAGLIN
DESIGNER: TITUS MOOD
PHONE: (217) 465-4181
CONTRACT NO. 70G74



GROSS LENGTH = 21,414.97 FT. = 4.056 MILE
NET LENGTH = 21,297.08 FT. = 4.034 MILE

STATE OF ILLINOIS
DEPARTMENT OF TRANSPORTATION

SUBMITTED 1215 2023
Kenneth A. Barnett
REGIONAL ENGINEER

February 2, 2024
Scott A. Etk
ENGINEER OF DESIGN AND ENVIRONMENT

February 2, 2024
Stephen M. Smith
DIRECTOR OF HIGHWAYS PROJECT IMPLEMENTATION

PRINTED BY THE AUTHORITY
OF THE STATE OF ILLINOIS

INDEX OF SHEETS

<u>SHEET NO.</u>	<u>DESCRIPTION</u>
1	COVER SHEET
2	INDEX OF SHEETS
2	LIST OF HIGHWAY STANDARDS
2	GENERAL NOTES
3 - 4	SUMMARY OF QUANTITIES
5	EXISTING AND PROPOSED TYPICAL CROSS SECTIONS
6 - 7	SCHEDULE OF QUANTITIES
8 - 15	PLAN SHEETS
16	DETAIL FOR PAVEMENT MARKING (IL RTE. 105 & US RTE. 36)
17	DETAIL FOR CAPE SEAL RUNDOWN
18	DETAIL FOR PAVEMENT PATCHING (SPECIAL)
19	DETAIL FOR RUMBLE STRIP (ADVANCE OF INTERSECTIONS)
20 - 23	DETAIL FOR PAVEMENT MARKING AND MARKERS (RURAL & URBAN APPLICATIONS)

LIST OF HIGHWAY STANDARDS

<u>STANDARD NO.</u>	<u>NAME OF STANDARD</u>
000001-08	STANDARD SYMBOLS, ABBREVIATIONS AND PATTERNS
001006	DECIMAL OF AN INCH AND OF A FOOT
701006-05	OFF-ROAD OPERATIONS, 2L, 2W, 15' (4.5 m) TO 24" (600 mm) FROM PAVEMENT EDGE
701201-05	LANE CLOSURE, 2L, 2W, DAY ONLY, FOR SPEEDS ≥ 45 MPH
701301-04	LANE CLOSURE, 2L, 2W, SHORT TIME OPERATIONS
701306-04	LANE CLOSURE, 2L, 2W, SLOW MOVING OPERATIONS DAY ONLY, FOR SPEEDS ≥ 45 MPH
701311-03	LANE CLOSURE 2L, 2W, MOVING OPERATIONS - DAY ONLY
701501-06	URBAN LANE CLOSURE, 2L, 2W, UNDIVIDED
701901-09	TRAFFIC CONTROL DEVICES
780001-05	TYPICAL PAVEMENT MARKINGS
781001-04	TYPICAL APPLICATIONS RAISED REFLECTIVE PAVEMENT MARKERS

GENERAL NOTES

G.N.-100A
ELECTRONIC FILES AND/OR ELECTRONIC SURVEY INFORMATION INCLUDING CADD FILES WILL NOT BE AVAILABLE TO THE CONTRACTOR.

G.N.-107.12
THE NAME, ADDRESS AND TELEPHONE NUMBER OF THE LOCAL RAILROAD CONTACT IS:

BOBBY HARVEY
ROAD MASTER
DECATUR & EASTERN ILLINOIS RAILROAD
WATCO COMPANIES, LLC
C-217-855-4107

SPECIAL ATTENTION IS CALLED TO ARTICLE 107.12 REGARDING RAILROAD FLAGGERS. THE NAME, ADDRESS AND TELEPHONE NUMBER OF THE RAILROAD FLAGGER CONTACT IS:

BOBBY HARVEY
ROAD MASTER
DECATUR & EASTERN ILLINOIS RAILROAD
WATCO COMPANIES, LLC
C-217-855-4107

G.N. 406S
PROJECT POSTED SPEED LIMITS

THE FOLLOWING TABLE IS A LISTING OF POSTED SPEED LIMITS WITHIN THE PROJECT LIMITS. THE ENGINEER SHALL FIELD VERIFY THESE LIMITS:

LOCATION	STATION	TO	STATION	POSTED SPEED LIMIT (MPH)
FAP 758 (IL 32)	49+30.03		68+30.00	50
FAP 758 (IL 32)	68+30.00		93+35.00	40
FAP 758 (IL 32)	93+35.00		110+90.00	50
FAP 758 (IL 32)	110+90.00		263+45.00	55

G.N.-703A
SHORT TERM PAVEMENT MARKING SHALL BE APPLIED TO THE PAVEMENT AFTER ANY OF THE FOLLOWING: PAVEMENT MARKING REMOVAL, COLD MILLING AND/OR PLACING BITUMINOUS MATERIALS (TACK COAT), BINDER AND SURFACE COURSES. SHORT TERM PAVEMENT MARKING PLACED ON THE SURFACE SHALL COINCIDE WITH THE FINAL PAVEMENT STRIPING. SHORT TERM PAVEMENT MARKING PLACED PRIOR TO THE SURFACE SHALL COINCIDE WITH THE EXISTING PAVEMENT MARKINGS. USE 4 FEET PER 40 FEET (OR 10% PER STATION).

G.N. - 781
THE FINAL PAVEMENT MARKINGS SHALL BE IN PLACE PRIOR TO PLACING THE RAISED REFLECTIVE PAVEMENT MARKERS.

COMMITMENTS

THERE ARE NO COMMITMENTS FOR THIS CONTRACT.

**STATE OF ILLINOIS
DEPARTMENT OF TRANSPORTATION**

**INDEX OF SHEETS / LIST OF HIGHWAY STANDARDS
GENERAL NOTES**

SCALE: 1"=50' SHEET 1 OF 1 SHEETS STA. TO STA.

F.A.P. RTE.	SECTION	COUNTY	TOTAL SHEETS	SHEET NO.
758	3RS-5&(4,5)RS-3	PIATT	23	2
CONTRACT NO. 70G74				
		ILLINOIS	FED. AID PROJECT	

SUMMARY OF QUANTITIES

LOCATION OF WORK: FAP 758 / (IL 32)
 RURAL 2 LANE
 COUNTY: PIATT
 STA. 49+30.03
 TO
 STA. 263+45.00
 FUNDING BREAKOUT: 80% FED.
 20% STATE
 CONSTRUCTION CODE: 0005

LOCATION OF WORK: FAP 758 / (IL 32)
 RURAL 2 LANE
 COUNTY: PIATT
 STA. 49+30.03
 TO
 STA. 263+45.00
 FUNDING BREAKOUT: 80% FED.
 20% STATE
 CONSTRUCTION CODE: 0005

CODE NO	ITEM	UNIT	TOTAL QUANTITY
40400001	FIBER-MODIFIED ASPHALT CRACK SEALING	FOOT	21,439.0
40400020	BUMP REMOVAL	EACH	140.0
40500061	CAPE SEAL	SQ YD	74,645.0
44200050	WELDED WIRE REINFORCEMENT	SQ YD	117.0
44213200	SAW CUTS	FOOT	198.0
44213204	TIE BARS 3/4"	EACH	27.0
44213208	TIE BARS 1 1/4"	EACH	72.0
48101200	AGGREGATE SHOULDERS, TYPE B	TON	712.0
67000500	ENGINEER'S FIELD OFFICE, TYPE B	CAL MO	4.0
67100100	MOBILIZATION	L SUM	1.0

* SPECIALTY ITEM

CODE NO	ITEM	UNIT	TOTAL QUANTITY
70100450	TRAFFIC CONTROL AND PROTECTION, STANDARD 701201	L SUM	1.0
70100460	TRAFFIC CONTROL AND PROTECTION, STANDARD 701306	L SUM	1.0
70102620	TRAFFIC CONTROL AND PROTECTION, STANDARD 701501	L SUM	1.0
70300100	SHORT TERM PAVEMENT MARKING	FOOT	4,304.0
70300150	SHORT TERM PAVEMENT MARKING REMOVAL	SQ FT	718.0
70300211	TEMPORARY PAVEMENT MARKING LETTERS AND SYMBOLS - PAINT	SQ FT	123.0
70300221	TEMPORARY PAVEMENT MARKING - LINE 4" - PAINT	FOOT	51,460.0
70300241	TEMPORARY PAVEMENT MARKING - LINE 6" - PAINT	FOOT	163.0
70300261	TEMPORARY PAVEMENT MARKING - LINE 12" - PAINT	FOOT	133.0
70300281	TEMPORARY PAVEMENT MARKING - LINE 24" - PAINT	FOOT	104.0

* SPECIALTY ITEM

MODEL: R:\MODELS\MEE FILE NAME: P:\DOT\Documents\DOT Office\District 5\ORD Project\0570374\CADD\0570374-SH\SUM of Qty.dgn

USER NAME = Tibus,Mood	DESIGNED -	REVISED -
PLOT SCALE = 0.16666633' / in.	DRAWN -	REVISED -
PLOT DATE = 12/5/2023	CHECKED -	REVISED -
	DATE -	REVISED -

**STATE OF ILLINOIS
 DEPARTMENT OF TRANSPORTATION**

SUMMARY OF QUANTITIES

SCALE: 1"=50' SHEET 1 OF 2 SHEETS STA. TO STA.

F.A.P. RTE.	SECTION	COUNTY	TOTAL SHEETS	SHEET NO.
758	3RS-5&(4,5)RS-3	PIATT	23	3
CONTRACT NO. 70G74			ILLINOIS FED. AID PROJECT	

SUMMARY OF QUANTITIES

LOCATION OF WORK: FAP 758 / (IL 32)
 RURAL 2 LANE
 COUNTY: PIATT
 STA. 49+30.03
 TO
 STA. 263+45.00
 FUNDING BREAKOUT: 80% FED.
 20% STATE
 CONSTRUCTION CODE: 0005

LOCATION OF WORK: FAP 758 / (IL 32)
 RURAL 2 LANE
 COUNTY: PIATT
 STA. 49+30.03
 TO
 STA. 263+45.00
 FUNDING BREAKOUT: 80% FED.
 20% STATE
 CONSTRUCTION CODE: 0005

CODE NO	ITEM	UNIT	TOTAL QUANTITY
* 78000100	THERMOPLASTIC PAVEMENT MARKING - LETTERS AND SYMBOLS	SQ FT	123.0
* 78000200	THERMOPLASTIC PAVEMENT MARKING - LINE 4"	FOOT	920.0
* 78000400	THERMOPLASTIC PAVEMENT MARKING - LINE 6"	FOOT	163.0
* 78000600	THERMOPLASTIC PAVEMENT MARKING - LINE 12"	FOOT	133.0
* 78000650	THERMOPLASTIC PAVEMENT MARKING - LINE 24"	FOOT	104.0
* 78001110	PAINT PAVEMENT MARKING - LINE 4"	FOOT	50,540.0
* 78011000	GROOVING FOR RECESSED PAVEMENT MARKING, LETTERS AND SYMBOLS	SQ FT	123.0
* 78011025	GROOVING FOR RECESSED PAVEMENT MARKING 5"	FOOT	920.0
* 78011035	GROOVING FOR RECESSED PAVEMENT MARKING 7"	FOOT	163.0
* 78011065	GROOVING FOR RECESSED PAVEMENT MARKING 13"	FOOT	133.0

* SPECIALTY ITEM

CODE NO	ITEM	UNIT	TOTAL QUANTITY
* 78011125	GROOVING FOR RECESSED PAVEMENT MARKING 25"	FOOT	104.0
* 78100100	RAISED REFLECTIVE PAVEMENT MARKER	EACH	311.0
78300200	RAISED REFLECTIVE PAVEMENT MARKER REMOVAL	EACH	288.0
X4420201	PAVEMENT PATCHING (SPECIAL)	SQ YD	117.0
Z0013798	CONSTRUCTION LAYOUT	L SUM	1.0
Z0048665	RAILROAD PROTECTIVE LIABILITY INSURANCE	L SUM	1.0
Z0055300	RUMBLE STRIP	EACH	3.0

* SPECIALTY ITEM

MODEL: RMODELNAME
 FILE NAME: P:\Bids\2024\758\758-5&(4,5)RS-3\DOT Office\Drawings\DOT Office\Drawings\758-5&(4,5)RS-3\ShtSum of Qty.dgn

USER NAME = Tibus,Mood	DESIGNED -	REVISED -
	DRAWN -	REVISED -
PLOT SCALE = 0.16666633' / in.	CHECKED -	REVISED -
PLOT DATE = 12/5/2023	DATE -	REVISED -

**STATE OF ILLINOIS
 DEPARTMENT OF TRANSPORTATION**

SUMMARY OF QUANTITIES

SCALE: 1"=50' SHEET 2 OF 2 SHEETS STA. TO STA.

F.A.P. RTE.	SECTION	COUNTY	TOTAL SHEETS	SHEET NO.
758	3RS-5&(4,5)RS-3	PIATT	23	4
CONTRACT NO. 70G74			ILLINOIS FED. AID PROJECT	

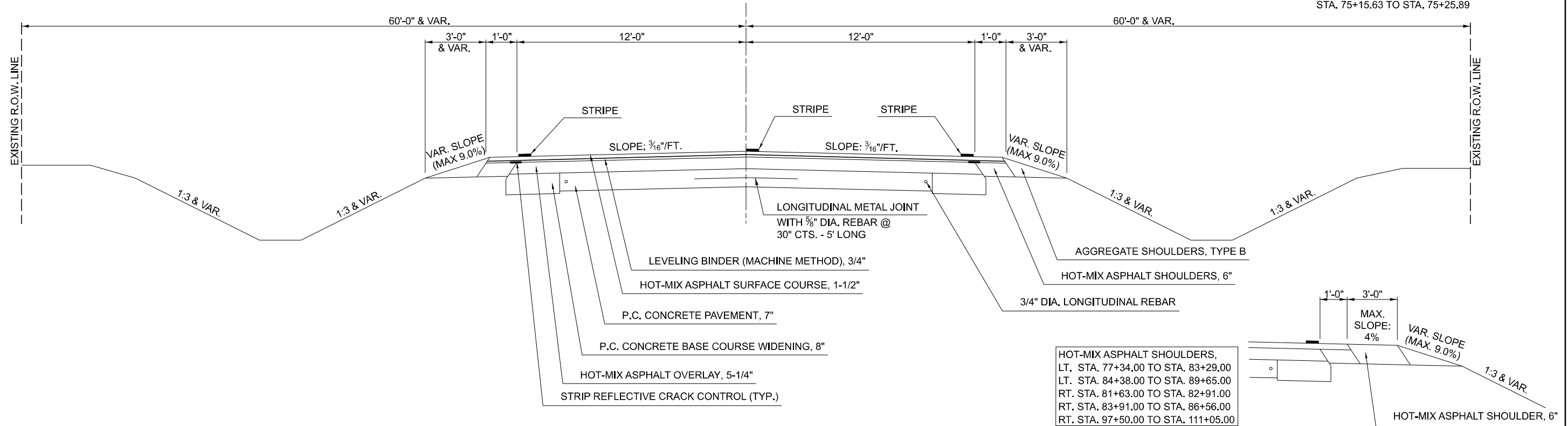
STATION EQUATIONS:
 STA. 78+24.75 (BK) = STA. 78+22.10 (AH)
 STA. 88+70.09 (BK) = STA. 88+72.74 (AH)

EXISTING TYPICAL CROSS SECTION

STATION TO STATION
 49+30.03 TO 263+45.00

STRUCTURE OMISSION:
 S.N. 074-2003
 STA. 83+07.82 TO STA. 84+15.45

RAILROAD OMISSION:
 STA. 75+15.63 TO STA. 75+25.89



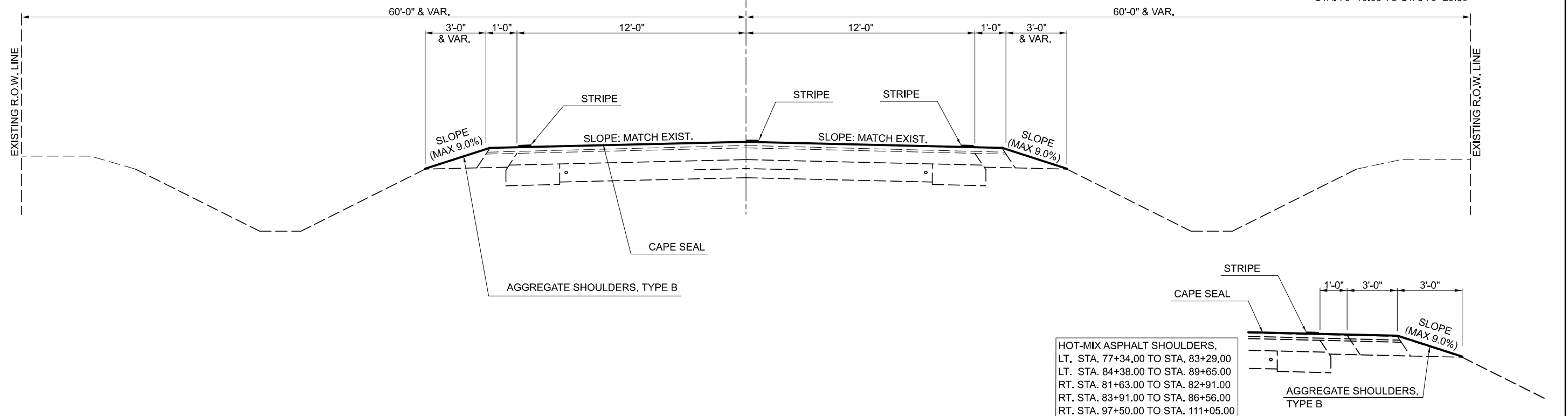
STATION EQUATIONS:
 STA. 78+24.75 (BK) = STA. 78+22.10 (AH)
 STA. 88+70.09 (BK) = STA. 88+72.74 (AH)

PROPOSED TYPICAL CROSS SECTION

STATION TO STATION
 49+30.03 TO 263+45.00

STRUCTURE OMISSION:
 S.N. 074-2003
 STA. 83+07.82 TO STA. 84+15.45

RAILROAD OMISSION:
 STA. 75+15.63 TO STA. 75+25.89



MODEL: \\MODELS\MJEE
 FILE NAME: \\p:\projects\2023\70G74\CADD\Drawings\70G74-SHA-Typical.dwg

USER NAME = Tibus,Mood	DESIGNED -	REVISED -
	DRAWN -	REVISED -
PLOT SCALE = 0.16666633' / in.	CHECKED -	REVISED -
PLOT DATE = 12/5/2023	DATE -	REVISED -

**STATE OF ILLINOIS
 DEPARTMENT OF TRANSPORTATION**

TYPICAL CROSS SECTION

SHEET 1 OF 1 SHEETS STA. ___+___ TO STA. ___+___

F.A.P. RTE.	SECTION	COUNTY	TOTAL SHEETS	SHEET NO.
758	3RS-5&(4,5)RS-3	PIATT	23	5
CONTRACT NO. 70G74				
ILLINOIS FED. AID PROJECT				

SCHEDULE OF QUANTITIES

78001110 PAINT PAVEMENT MARKING - LINE 4"
70300221 TEMPORARY PAVEMENT MARKING - LINE 4" - PAINT

LOCATION				STATION	TO	STATION	78001110 QUANTITY (FT)	70300221 QUANTITY (FT)	COLOR
N.B.	CL.	SKIP DASH		52+16.00		71+64.00	490.00	490.00	YELLOW
N.B.	CL.	SKIP DASH		87+12.00		263+45.00	4,420.00	4,420.00	YELLOW
N.B.	RT.	EOP		49+30.03		50+42.00	158.00	158.00	WHITE
N.B.	RT.	EOP		50+42.00		73+08.00	2,266.00	2,266.00	WHITE
N.B.	RT.	EOP		73+61.00		75+15.63	154.63	154.63	WHITE
N.B.	RT.	EOP		75+25.89		76+72.00	146.11	146.11	WHITE
N.B.	RT.	EOP		77+78.00		78+24.75 (BK)	46.75	46.75	WHITE
N.B.	RT.	EOP		78+22.10	(AH)	80+94.00	271.90	271.90	WHITE
N.B.	RT.	EOP		81+51.00		88+70.09 (BK)	719.09	719.09	WHITE
N.B.	RT.	EOP		88+72.74	(AH)	137+28.00	4,855.26	4,855.26	WHITE
N.B.	RT.	EOP		137+75.00		217+00.00	7,925.00	7,925.00	WHITE
N.B.	RT.	EOP		217+52.00		263+45.00	4,593.00	4,593.00	WHITE
S.B.	LT.	EOP		49+30.03		50+42.00	177.00	177.00	WHITE
S.B.	LT.	EOP		50+42.00		73+09.00	2,267.00	2,267.00	WHITE
S.B.	LT.	EOP		73+54.00		75+15.63	161.63	161.63	WHITE
S.B.	LT.	EOP		75+25.89		75+52.00	26.11	26.11	WHITE
S.B.	LT.	EOP		76+00.00		78+24.75 (BK)	224.75	224.75	WHITE
S.B.	LT.	EOP		78+22.10	(AH)	81+08.00	285.90	285.90	WHITE
S.B.	LT.	EOP		81+58.00		88+70.09 (BK)	712.09	712.09	WHITE
S.B.	LT.	EOP		88+72.74	(AH)	106+74.00	1,801.26	1,801.26	WHITE
S.B.	LT.	EOP		107+74.00		137+28.00	2,954.00	2,954.00	WHITE
S.B.	LT.	EOP		137+75.00		217+03.00	7,928.00	7,928.00	WHITE
S.B.	LT.	EOP		217+52.00		263+45.00	4,593.00	4,593.00	WHITE
N.B.	CL.	NO PASS		71+64.00		75+15.63	351.63	351.63	YELLOW
N.B.	CL.	NO PASS		75+25.89		87+12.00	1,186.11	1,186.11	YELLOW
S.B.	CL.	NO PASS		71+64.00		75+15.63	351.63	351.63	YELLOW
S.B.	CL.	NO PASS		75+25.89		90+00.00	1,474.11	1,474.11	YELLOW
TOTAL =							50,539.96	50,539.96	
USE =							50,540.00	50,540.00	
							FT	FT	

78000100 THERMOPLASTIC PAVEMENT MARKING - LETTERS AND SYMBOLS
78011000 GROOVING FOR RECESSED PAVEMENT MARKING, LETTERS AND SYMBOLS
70300211 TEMPORARY PAVEMENT MARKING LETTERS AND SYMBOLS - PAINT

LOCATION				STATION	SYMBOL	78000100 QUANTITY (SQ FT)	78011000 QUANTITY (SQ FT)	70300211 QUANTITY (SQ FT)	COLOR
FAP 758	RT.			72+00.00	RAILROAD "R"	3.6	3.6	3.6	WHITE
FAP 758	RT.			72+00.00	RAILROAD "X"	54.0	54.0	54.0	WHITE
FAP 758	RT.			72+00.00	RAILROAD "R"	3.6	3.6	3.6	WHITE
FAP 758	LT.			78+50.00	RAILROAD "R"	3.6	3.6	3.6	WHITE
FAP 758	LT.			78+50.00	RAILROAD "X"	54.0	54.0	54.0	WHITE
FAP 758	LT.			78+50.00	RAILROAD "R"	3.6	3.6	3.6	WHITE
TOTAL =						122.40	122.40	122.40	
USE =						123.00	123.00	123.00	
						SQ FT	SQ FT	SQ FT	

78000200 THERMOPLASTIC PAVEMENT MARKING - LINE 4"
78011025 GROOVING FOR RECESSED PAVEMENT MARKING 5"
70300221 TEMPORARY PAVEMENT MARKING - LINE 4" - PAINT

LOCATION				STATION	TO	STATION	78000200 QUANTITY (FT)	78011025 QUANTITY (FT)	70300221 QUANTITY (FT)	COLOR
N.B.	CL.	MEDIAN		49+46.00		51+36.00	760.00	760.00	760.00	YELLOW
N.B.	CL.	MEDIAN		51+36.00		52+16.00	160.00	160.00	160.00	YELLOW
TOTAL =							920.00	920.00	920.00	
							FT	FT	FT	

78000400 THERMOPLASTIC PAVEMENT MARKING - LINE 6"
78011035 GROOVING FOR RECESSED PAVEMENT MARKING 7"
70300241 TEMPORARY PAINT PAVEMENT MARKING - LINE 6" - PAINT

LOCATION				STATION	OFFSET (FT)	TO	STATION	OFFSET (FT)	78000400 QUANTITY (FT)	78011035 QUANTITY (FT)	70300241 QUANTITY (FT)	COLOR	
N.W. QUAD / IL RTE. 32	ISLAND			49+29.79	LT.	14.00	49+76.23	LT.	14.00	47.0	47.0	47.0	WHITE
N.W. QUAD / IL RTE. 32	ISLAND			49+29.79	LT.	14.00	49+29.00	LT.	61.78	48.0	48.0	48.0	WHITE
N.W. QUAD / IL RTE. 32	ISLAND			49+29.00	LT.	61.78	49+76.23	LT.	14.00	68.0	68.0	68.0	WHITE
TOTAL =									163.0	163.0	163.0		
									FT	FT	FT		

78000600 THERMOPLASTIC PAVEMENT MARKING - LINE 12"
78011065 GROOVING FOR RECESSED PAVEMENT MARKING 13"
70300261 TEMPORARY PAVEMENT MARKING - LINE 12" - PAINT

LOCATION				STATION	TO	STATION	78000600 QUANTITY (FT)	78011065 QUANTITY (FT)	70300261 QUANTITY (FT)	COLOR
S.B.	LT.	ISLAND		49+29.79		49+76.23	110.00	110.00	110.00	WHITE
N.B.	RT.	MEDIAN		49+46.00		51+36.00	23.00	23.00	23.00	YELLOW
TOTAL =							133.00	133.00	133.00	
							FT	FT	FT	

78000650 THERMOPLASTIC PAVEMENT MARKING - LINE 24"
78011125 GROOVING FOR RECESSED PAVEMENT MARKING 25"
70300281 TEMPORARY PAVEMENT MARKING - LINE 24" - PAINT

LOCATION			STATION	78000650 QUANTITY (FT)	78011125 QUANTITY (FT)	70300281 QUANTITY (FT)	COLOR
FAP 758	LT.		49+46.00	14.0	14.0	14.0	WHITE
FAP 758	LT.		49+46.00	18.0	18.0	18.0	WHITE
FAP 758	RT.		71+74.00	12.0	12.0	12.0	WHITE
FAP 758	RT.		72+24.00	12.0	12.0	12.0	WHITE
FAP 758	RT.		74+96.00	12.0	12.0	12.0	WHITE
FAP 758	LT.		75+42.00	12.0	12.0	12.0	WHITE
FAP 758	LT.		78+24.00	12.0	12.0	12.0	WHITE
FAP 758	LT.		78+74.00	12.0	12.0	12.0	WHITE
TOTAL =				104.0	104.0	104.0	
				FT	FT	FT	

78100100 RAISED REFLECTIVE PAVEMENT MARKER
78300200 RAISED REFLECTIVE PAVEMENT MARKER REMOVAL

LOCATION				STATION	TO	STATION	LENGTH (FT)	78100100 TWO-WAY AMBER QUANTITY (EACH)	78300200 RRPM REMOVAL QUANTITY (EACH)
N.B.	C.L.	MEDIAN		49+46.00		51+36.00	190.00	12.00	12.00
N.B.	C.L.	MEDIAN		51+36.00		52+16.00	80.00	6.00	6.00
N.B.	C.L.	SKIP DASH		52+16.00		71+64.00	1948.00	25.00	25.00
N.B.	C.L.	DBL NO PASS		71+64.00		75+15.63	351.63	12.00	6.00
N.B.	C.L.	DBL NO PASS		75+25.89		78+24.75 (BK)	298.86	8.00	4.00
N.B.	C.L.	DBL NO PASS		78+22.10	(AH)	83+07.82	485.72	16.00	8.00
N.B.	C.L.	DBL NO PASS		84+15.45		87+12.00	296.55	10.00	5.00
N.B.	C.L.	SKIP DASH		87+12.00		88+70.09 (BK)	158.09	2.00	2.00
N.B.	C.L.	SKIP DASH		88+72.74	(AH)	90+00.00	127.26	2.00	2.00
N.B.	C.L.	SKIP DASH		90+00.00		263+45.00	17345.00	218.00	218.00
TOTAL =								311.00	288.00
								EACH	EACH

MODEL: R:\MODELS\11666833\11666833.dwg
FILE NAME: R:\MODELS\11666833\11666833.dwg

USER NAME = Tibus, Mood	DESIGNED -	REVISED -
	DRAWN -	REVISED -
PLOT SCALE = 0.16666833 / in.	CHECKED -	REVISED -
PLOT DATE = 12/5/2023	DATE -	REVISED -

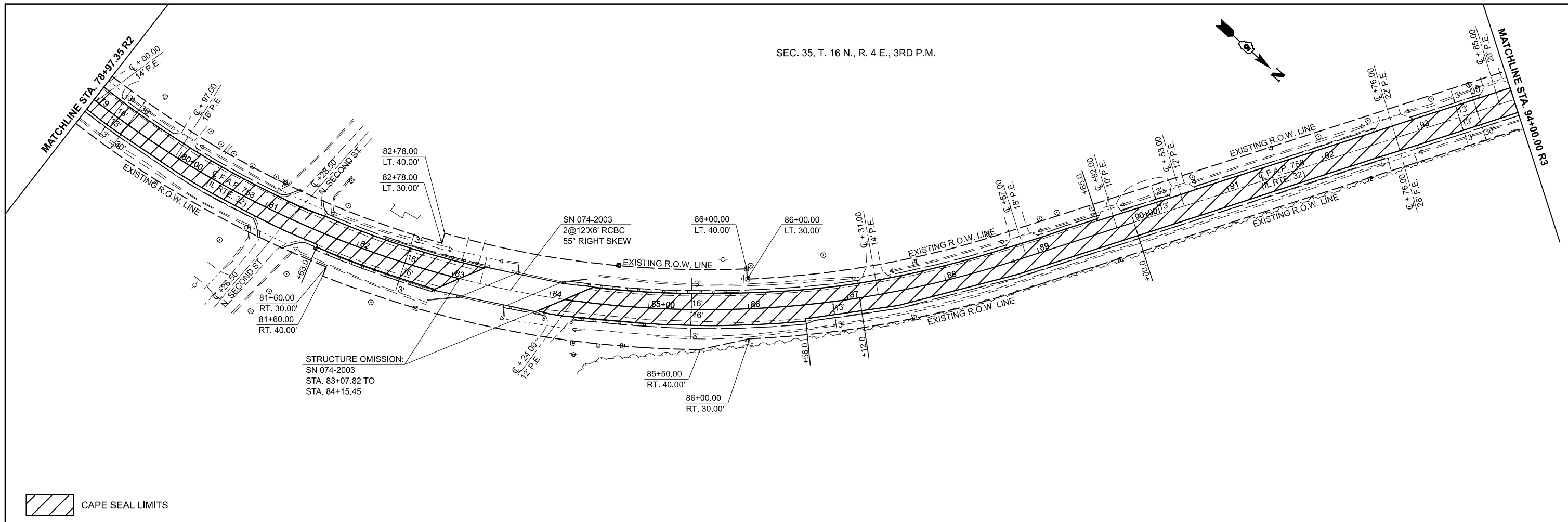
**STATE OF ILLINOIS
DEPARTMENT OF TRANSPORTATION**

SCHEDULE OF QUANTITIES

SCALE: 1"=50' SHEET 2 OF 2 SHEETS STA. TO STA.

F.A.P. RTE. 758	SECTION 3RS-5&(4,5)RS-3	COUNTY PIATT	TOTAL SHEETS 23	SHEET NO. 7
CONTRACT NO. 70G74			ILLINOIS FED. AID PROJECT	

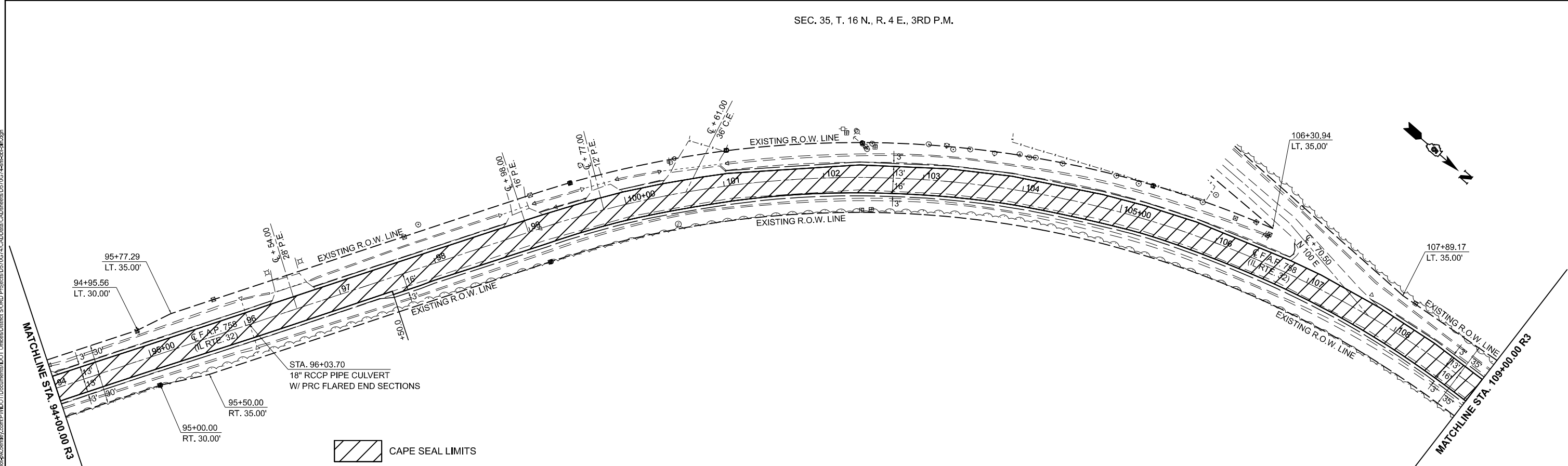
SEC. 35, T. 16 N., R. 4 E., 3RD P.M.



STRUCTURE OMISSION:
SN 074-2003
STA. 83+07.82 TO
STA. 84+15.45

CAPE SEAL LIMITS

SEC. 35, T. 16 N., R. 4 E., 3RD P.M.



CAPE SEAL LIMITS

MODEL: \\MODELNAME; FILENAME: \\PROJECTNAME\PROJECT\DWG\CADD\DATA\CADD\DWG\07074\07074.dwg

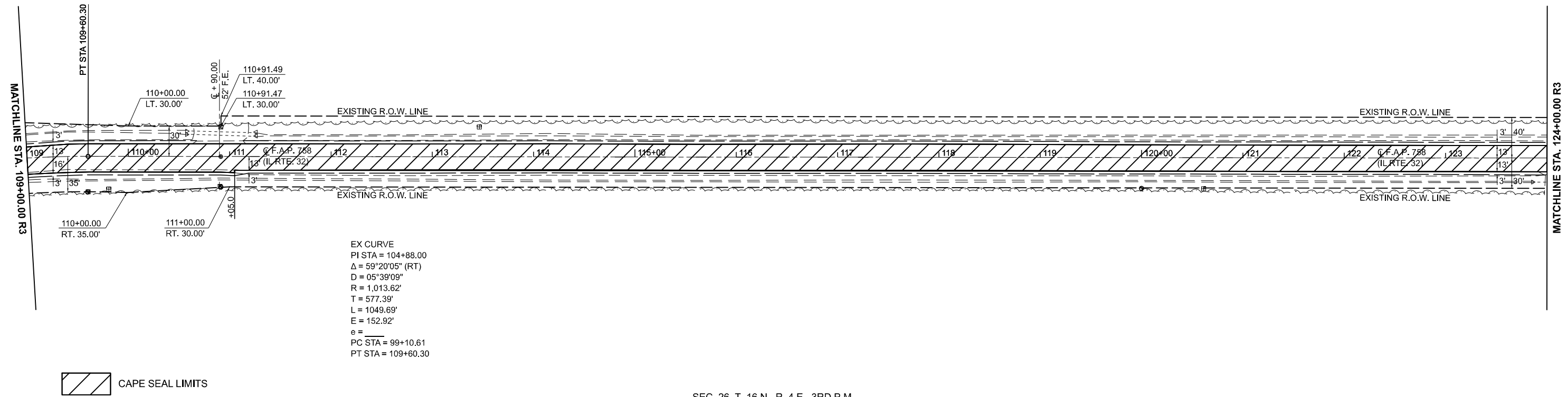
USER NAME = Tibus,Mood	DESIGNED -	REVISED -
DRAWN -	REVISED -	
PLOT SCALE = 0.16666633' / in.	CHECKED -	REVISED -
PLOT DATE = 12/5/2023	DATE -	REVISED -

**STATE OF ILLINOIS
DEPARTMENT OF TRANSPORTATION**

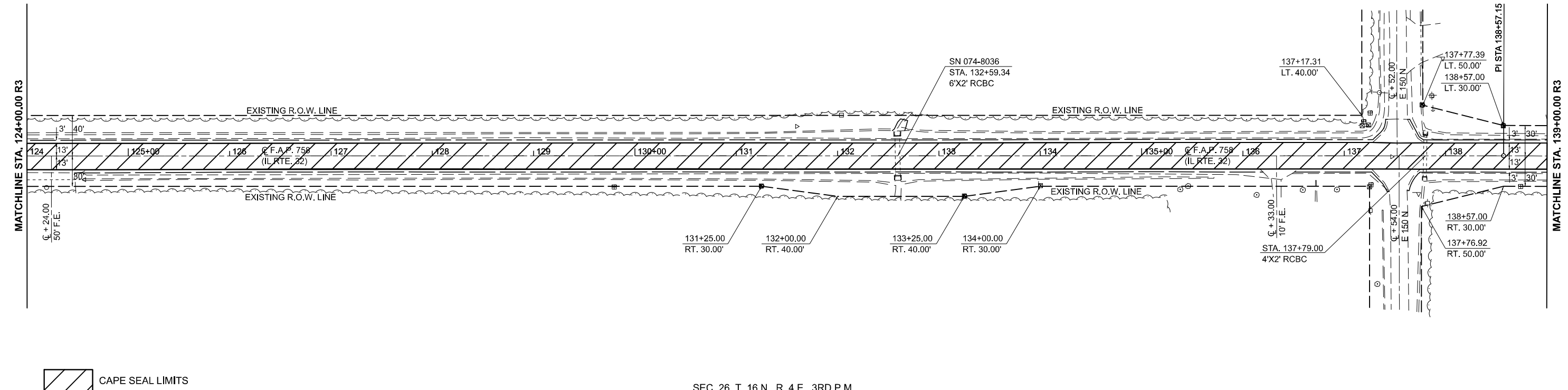
PLAN SHEET

SCALE: 1"=50' SHEET 2 OF 8 SHEETS STA. TO STA.

F.A.P. RTE.	SECTION	COUNTY	TOTAL SHEETS	SHEET NO.
758	3RS-5&(4,5)RS-3	PIATT	23	9
CONTRACT NO. 70G74				
ILLINOIS FED. AID PROJECT				



EX CURVE
 PI STA = 104+88.00
 $\Delta = 59^{\circ}20'05''$ (RT)
 $D = 05^{\circ}39'09''$
 $R = 1,013.62'$
 $T = 577.39'$
 $L = 1049.69'$
 $E = 152.92'$
 $e =$
 PC STA = 99+10.61
 PT STA = 109+60.30



MODEL: \\MODELS\NAMEE
 FILE NAME: P:\Info\pcc\kelly.com\PI\DOT\Documents\DOT Office\Drawings\Road\Drawings\2023\2023-07-14\hshhshh.dgn

USER NAME = Tibus,Mood	DESIGNED -	REVISED -
DRAWN -	REVISED -	
PLOT SCALE = 0.16666633' / in.	CHECKED -	REVISED -
PLOT DATE = 12/5/2023	DATE -	REVISED -

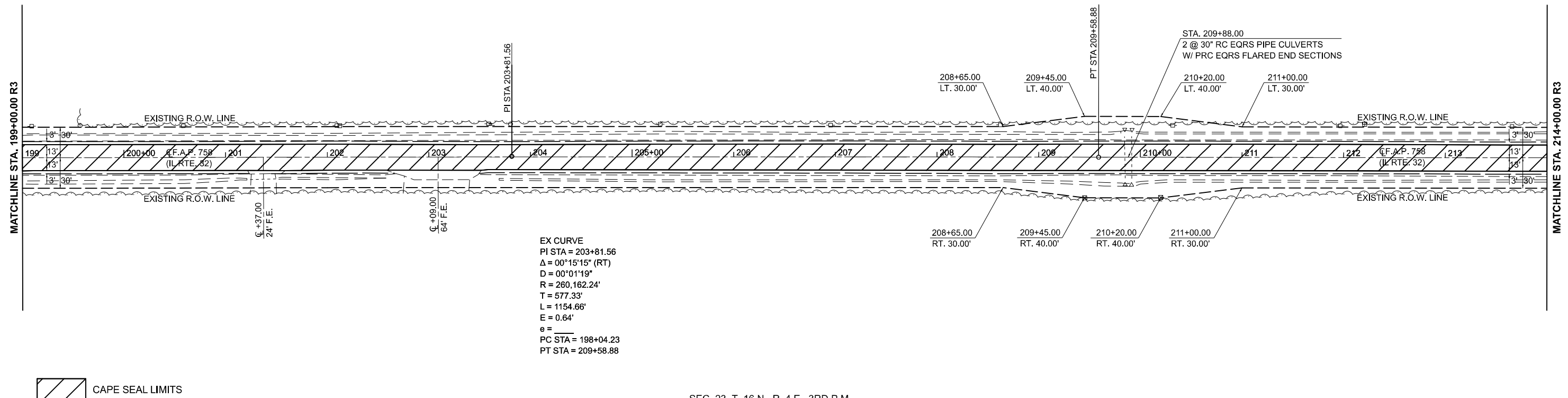
**STATE OF ILLINOIS
 DEPARTMENT OF TRANSPORTATION**

PLAN SHEET

SCALE: 1"=50' SHEET 3 OF 8 SHEETS STA. TO STA.

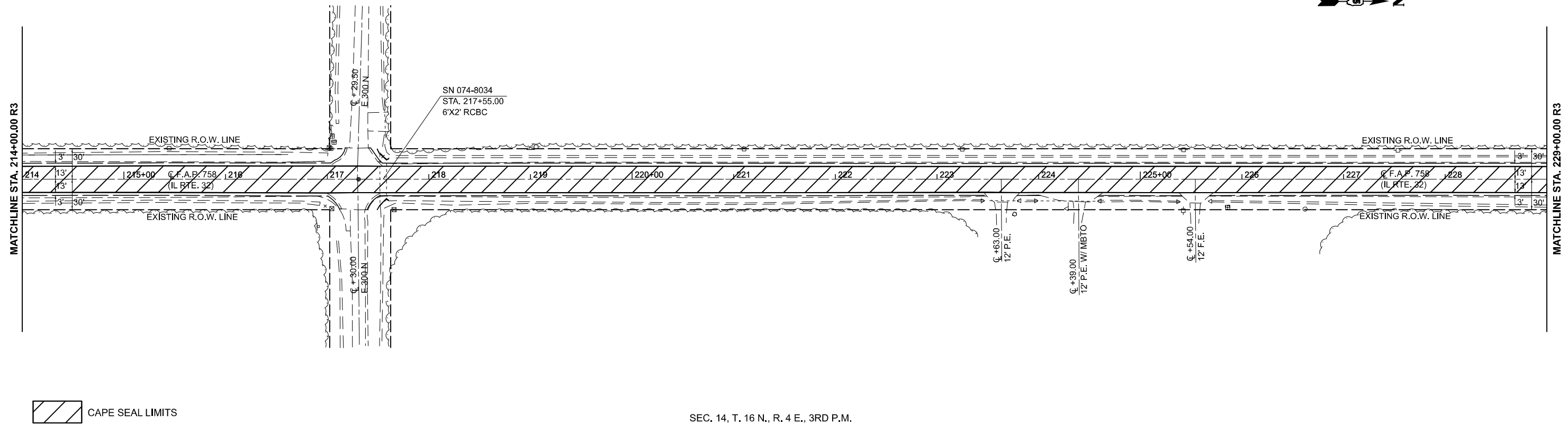
F.A.P. RTE.	SECTION	COUNTY	TOTAL SHEETS	SHEET NO.
758	3RS-5&(4,5)RS-3	PIATT	23	10
CONTRACT NO. 70G74				

ILLINOIS FED. AID PROJECT



EX CURVE
 PI STA = 203+81.56
 $\Delta = 00^{\circ}15'15''$ (RT)
 $D = 00^{\circ}01'19''$
 $R = 260,162.24'$
 $T = 577.33'$
 $L = 1154.66'$
 $E = 0.64'$
 $e =$
 PC STA = 198+04.23
 PT STA = 209+58.88

CAPE SEAL LIMITS



CAPE SEAL LIMITS

MODEL: \\MODELS\NAMEE
 FILE NAME: P:\Bids\pcc\m\by.com\PI\DOT\Documents\DOT Office\Dist15\ORD Project\Dist15\ORD\Drawings\CAD\Drawings\2023\74\shhshh.dwg

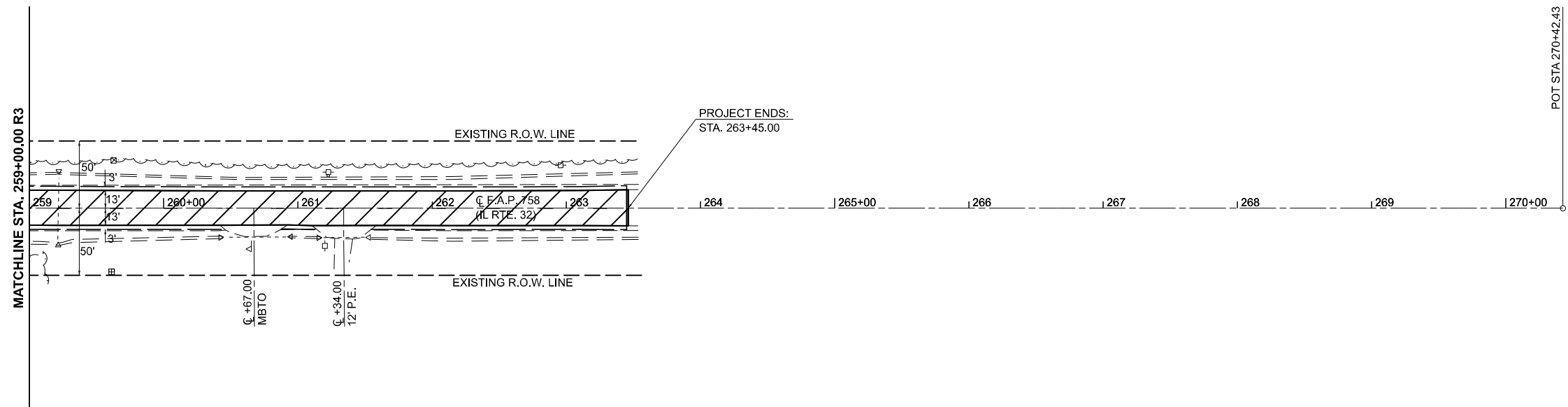
USER NAME = Tibus,Mood	DESIGNED -	REVISED -
	DRAWN -	REVISED -
PLOT SCALE = 0.16666633' / in.	CHECKED -	REVISED -
PLOT DATE = 12/5/2023	DATE -	REVISED -

**STATE OF ILLINOIS
 DEPARTMENT OF TRANSPORTATION**

PLAN SHEET

SCALE: 1"=50' SHEET 6 OF 8 SHEETS STA. TO STA.

F.A.P. RTE.	SECTION	COUNTY	TOTAL SHEETS	SHEET NO.
758	3RS-5&(4,5)RS-3	PIATT	23	13
CONTRACT NO. 70G74				
ILLINOIS FED. AID PROJECT				



 CAPE SEAL LIMITS

MODEL: \\MODELS\M1E2
 FILE NAME: P:\Info\pcc\kay\com\PI\DOT\Documents\DOT Office\District 5\ORD Project\0570374\CADD\05\CAD\Sheet\0570374-hh-hh-hh.dgn

USER NAME = Ttlus,Mood	DESIGNED -	REVISED -
	DRAWN -	REVISED -
PLOT SCALE = 0.16666633' / in.	CHECKED -	REVISED -
PLOT DATE = 12/5/2023	DATE -	REVISED -

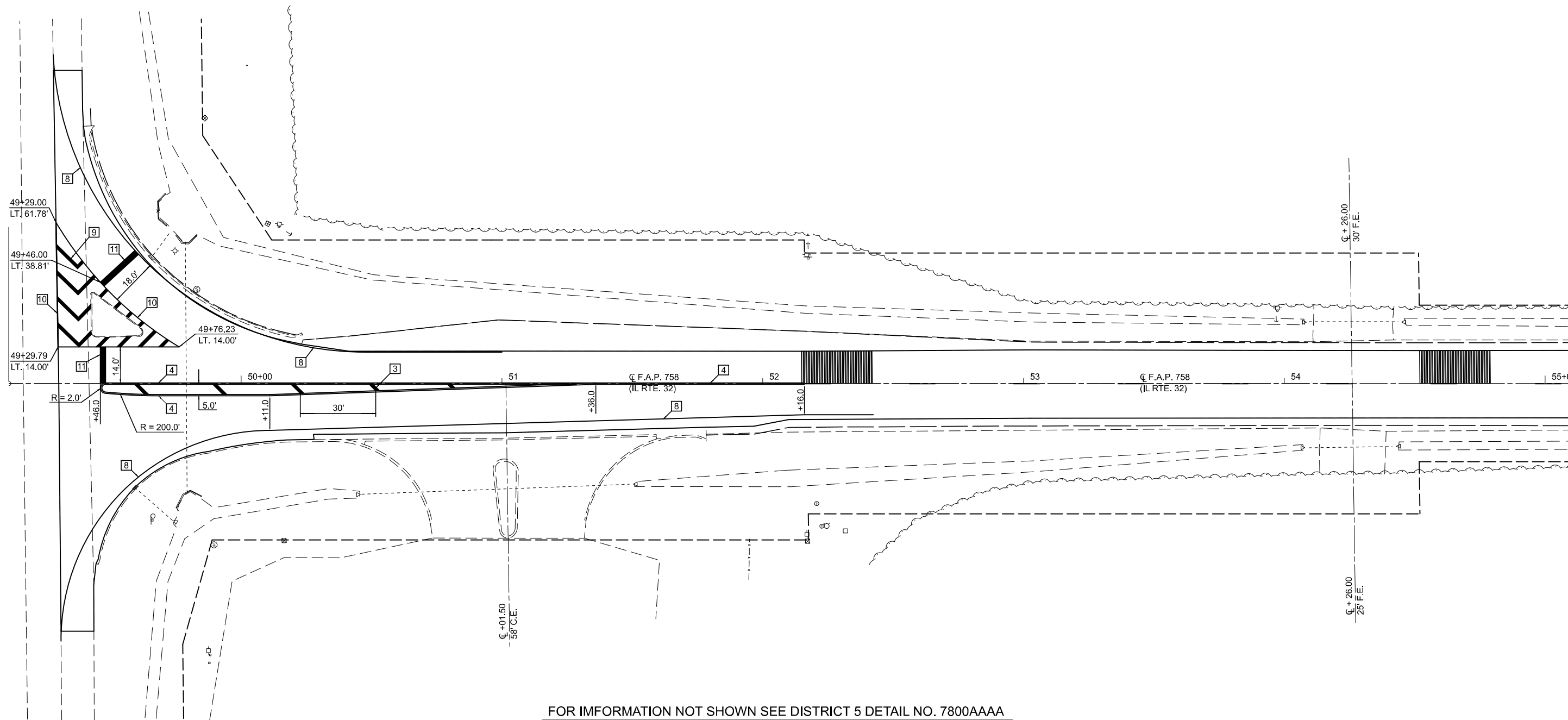
**STATE OF ILLINOIS
DEPARTMENT OF TRANSPORTATION**

PLAN SHEET

SCALE: 1"=50' SHEET 8 OF 8 SHEETS STA. TO STA.

F.A.P. RTE.	SECTION	COUNTY	TOTAL SHEETS	SHEET NO.
758	3RS-5&(4,5)RS-3	PIATT	23	15
CONTRACT NO. 70G74				
ILLINOIS FED. AID PROJECT				

PAVEMENT MARKING DETAIL
IL RTE. 32 & US RTE. 36



FOR INFORMATION NOT SHOWN SEE DISTRICT 5 DETAIL NO. 7800AAAA

TYPICAL PAVEMENT MARKING LEGEND

- | | |
|-----------------------------------|--|
| 1 4" (100) SKIP-DASH (YELLOW) | 9 12" (300) DIAGONAL (WHITE) |
| 2 4" (100) SOLID (YELLOW) | 10 6" (150) SOLID (WHITE) |
| 3 12" (300) DIAGONAL (YELLOW) | 11 24" (600) STOP BAR (WHITE) |
| 4 4" (100) DOUBLE YELLOW (NARROW) | 12 8" (200) SOLID (WHITE) |
| 7 4" (100) SKIP-DASH (WHITE) | 13 4" (100) LANE LINE EXTENSIONS (WHITE) |
| 8 4" (100) SOLID (WHITE) | 14 4" (100) PARKING WHITE |

MODEL: IL 32 - Plan 2 [Sheet]
 FILE NAME: c:\pwworking\reglin\gsd0867481\057074-shr-Pavement-Marking-Detail.dgn

USER NAME = Greg.Eaglin	DESIGNED -	REVISED -
DRAWN -	REVISED -	
PLOT SCALE = 0.16666633' / in.	CHECKED -	REVISED -
PLOT DATE = 11/27/2023	DATE -	REVISED -

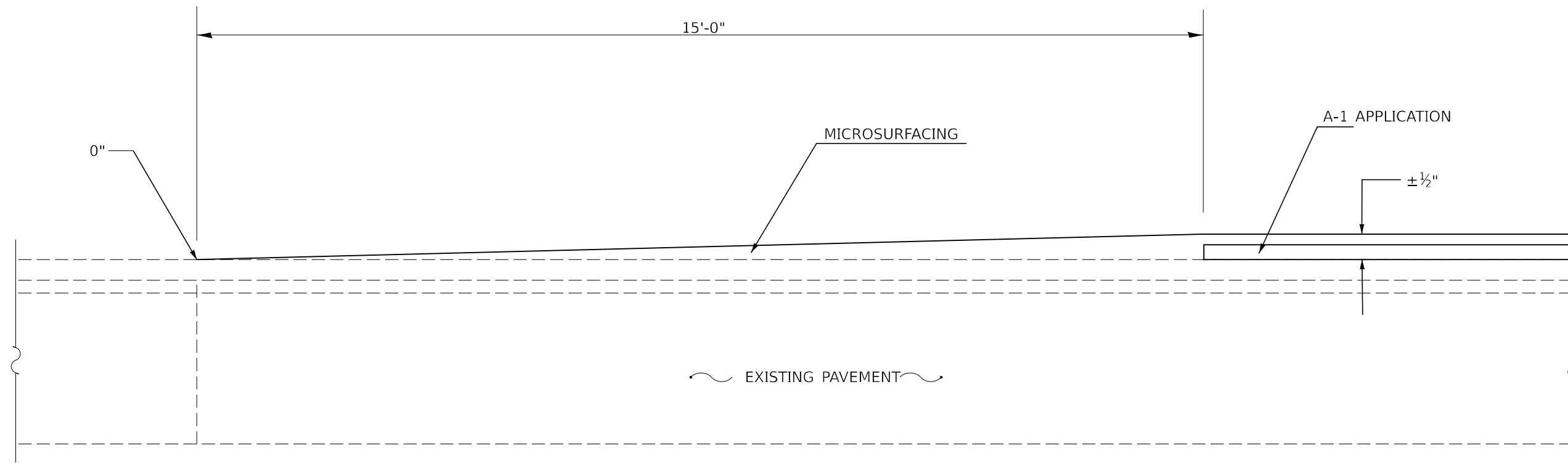
STATE OF ILLINOIS
DEPARTMENT OF TRANSPORTATION

PAVEMENT MARKING DETAIL
IL RTE. 32 & US RTE. 36

SCALE: 1"=20' SHEET 1 OF 1 SHEETS STA. 49+10.91 TO STA. 55+10.91

F.A.P. RTE.	SECTION	COUNTY	TOTAL SHEETS	SHEET NO.
758	3RS-5&(4.5)RS-3	PIATT	23	16
CONTRACT NO. 70G74				
ILLINOIS FED. AID PROJECT				

CAPE SEAL RUNDOWN DETAIL



NOTE:
 THE INTENT OF THIS DETAIL IS TO SHOW THE METHOD OF APPLICATION FOR THE CAPE SEAL OVERLAY AT THE BEGINNING & ENDING STATIONS. THIS RUNDOWN DETAIL SHALL ALSO BE USED AT THE STRUCTURE AND RAILROAD OMISSION LOCATIONS WITHIN THE PROJECT LIMITS.

MODEL: \\MODELNAME
 FILE NAME: \\PROJECTNAME\Documents\DOT Office\District 5\ORD Project\0570374\CADD\Drawings\0570374-SiteDetail-Cape Seal Rundown Detail.dgn

USER NAME = Tllus,Mood	DESIGNED -	REVISED -
DRAWN -	REVISIED -	
PLOT SCALE = 0.16666633' / in.	CHECKED -	REVISED -
PLOT DATE = 12/5/2023	DATE -	REVISED -

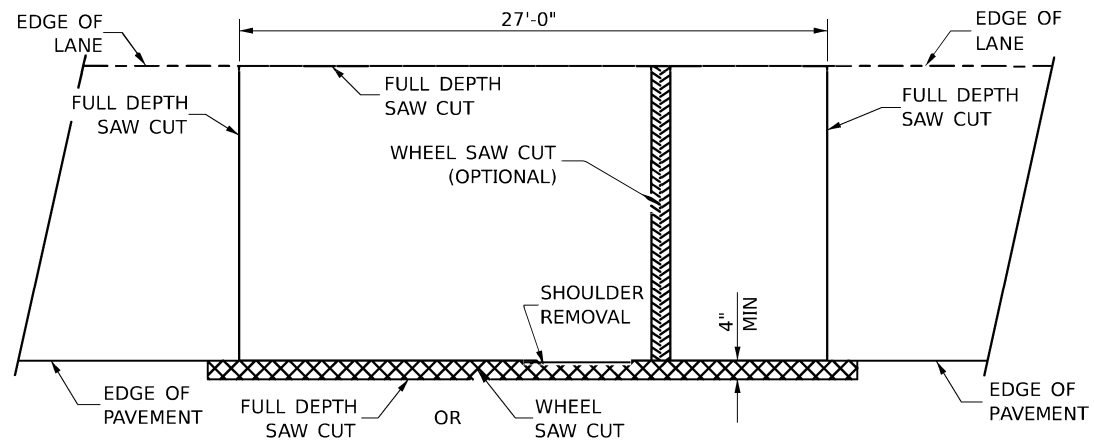
**STATE OF ILLINOIS
 DEPARTMENT OF TRANSPORTATION**

CAPE SEAL RUNDOWN DETAIL

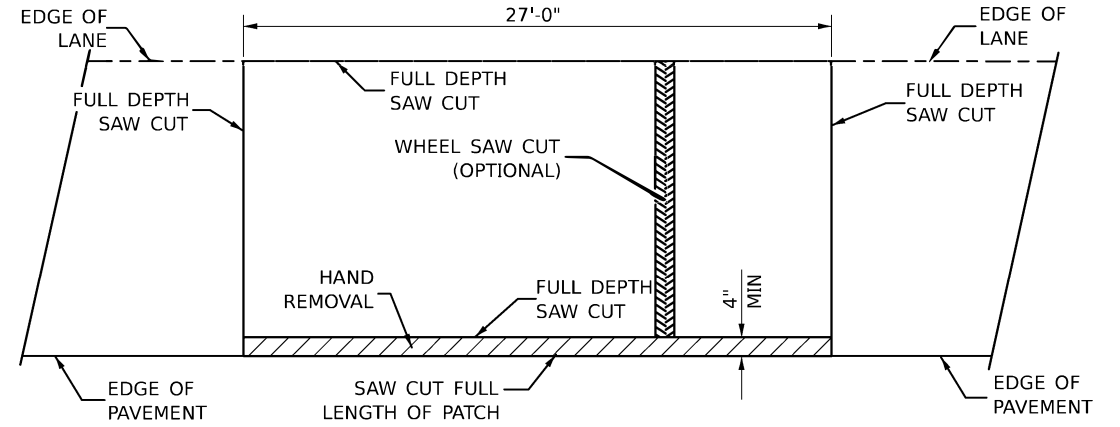
SCALE: 1"=50' SHEET 1 OF 1 SHEETS STA. TO STA.

F.A.P. RTE. 758	SECTION 3RS-5&(4,5)RS-3	COUNTY PIATT	TOTAL SHEETS 23	SHEET NO. 17
CONTRACT NO. 70G74			ILLINOIS FED. AID PROJECT	

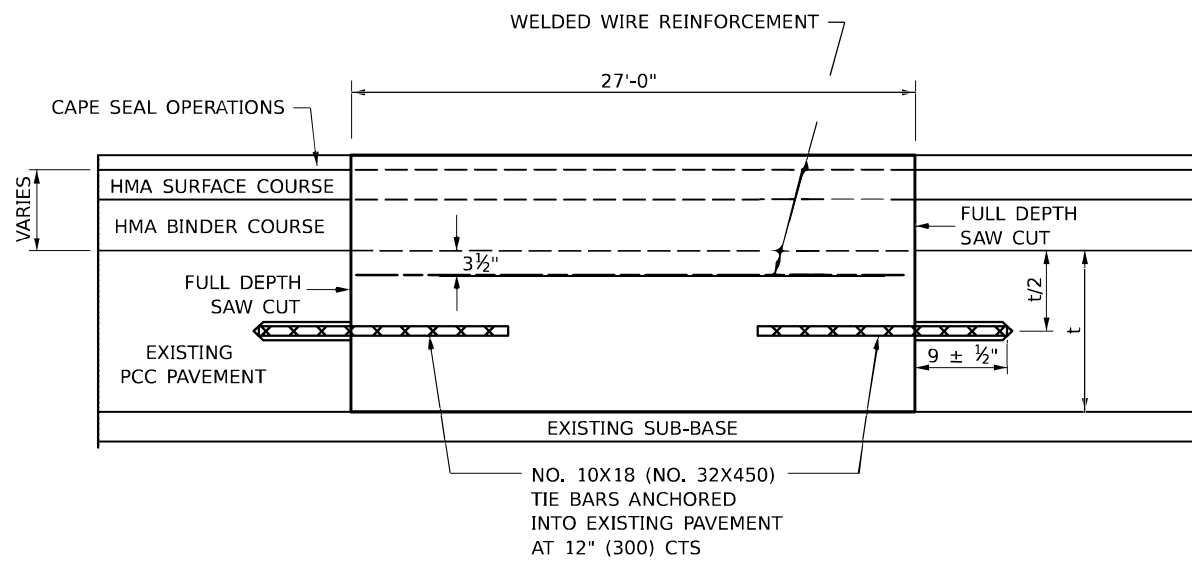
PAVEMENT PATCHING (SPECIAL) DETAIL



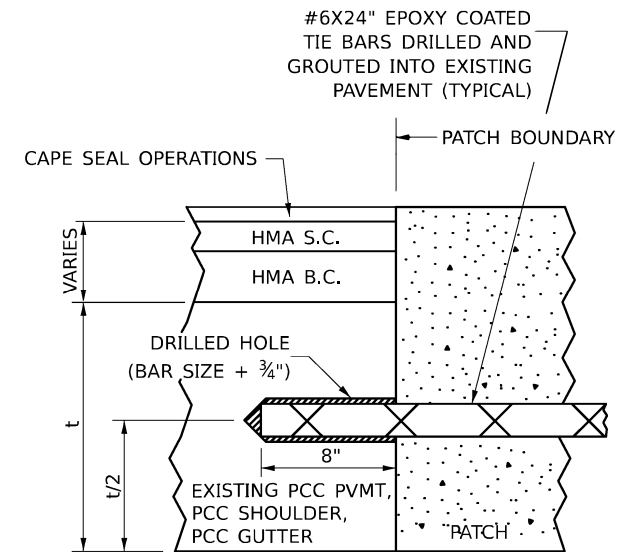
**PAVEMENT SAWING DETAIL
(HMA SHOULDER)**



**PAVEMENT SAWING DETAIL
CURB & GUTTER**



PATCHING DETAIL FOR PAVEMENT PATCHING SPECIAL



LONGITUDINAL CONSTRUCTION JOINT

PATCHES SHALL BE TIED TO ADJACENT PAVEMENT, PCC SHOULDERS OR PCC CURB AND GUTTER WITH #6x24" EPOXY COATED TIE BARS AT 36" CENTERS.

MODEL: Pav Patching Special-1 [Sheet]
FILE NAME: c:\pwworking\reglin\0867481\057074_Sht-Pavement Patching Special Detail.dgn

USER NAME = Greg.Eaglin	DESIGNED -	REVISED -
PLOT SCALE = 0.16666633' / in.	DRAWN -	REVISED -
PLOT DATE = 11/16/2023	CHECKED -	REVISED -
	DATE -	REVISED -

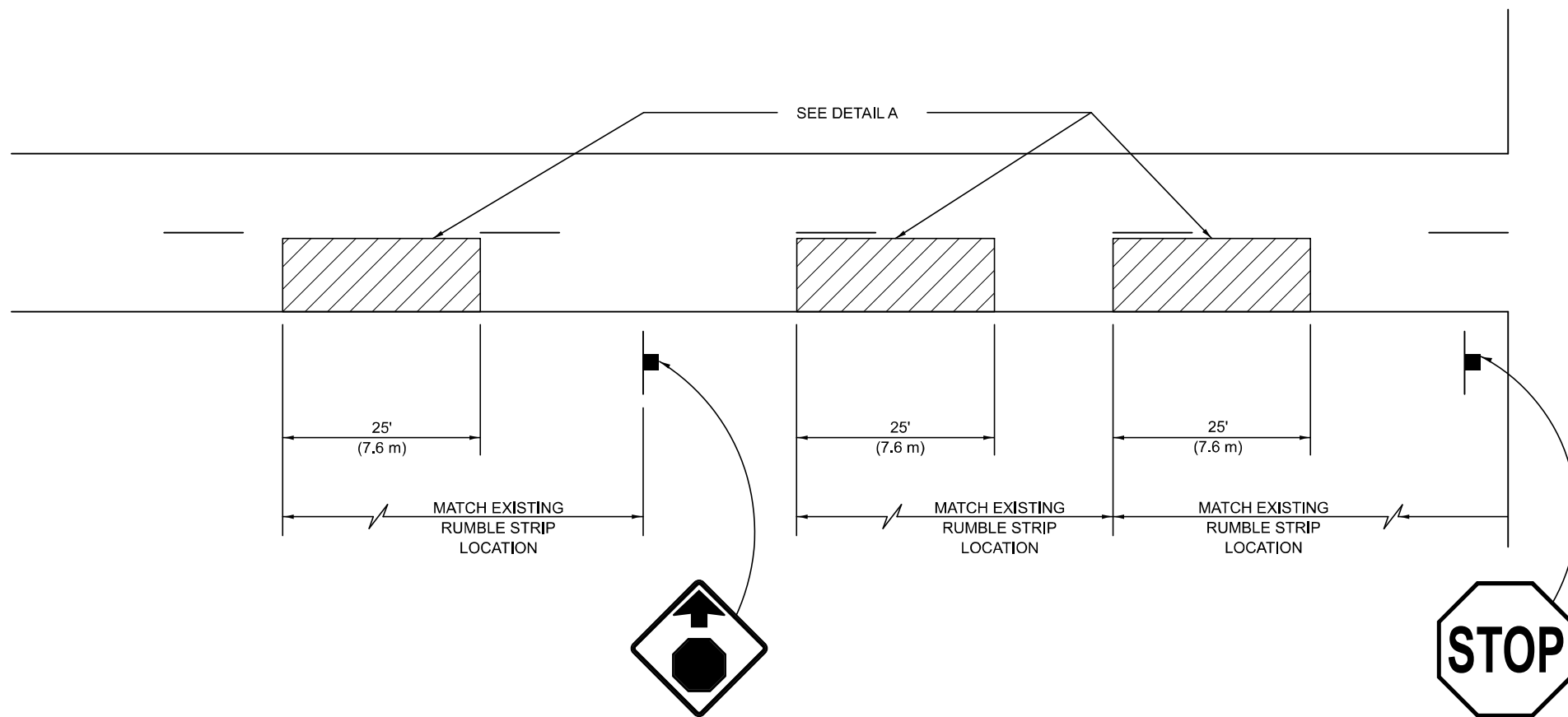
**STATE OF ILLINOIS
DEPARTMENT OF TRANSPORTATION**

PAVEMENT PATCHING (SPECIAL) DETAIL

SCALE: NONE SHEET 1 OF 1 SHEETS STA. TO STA.

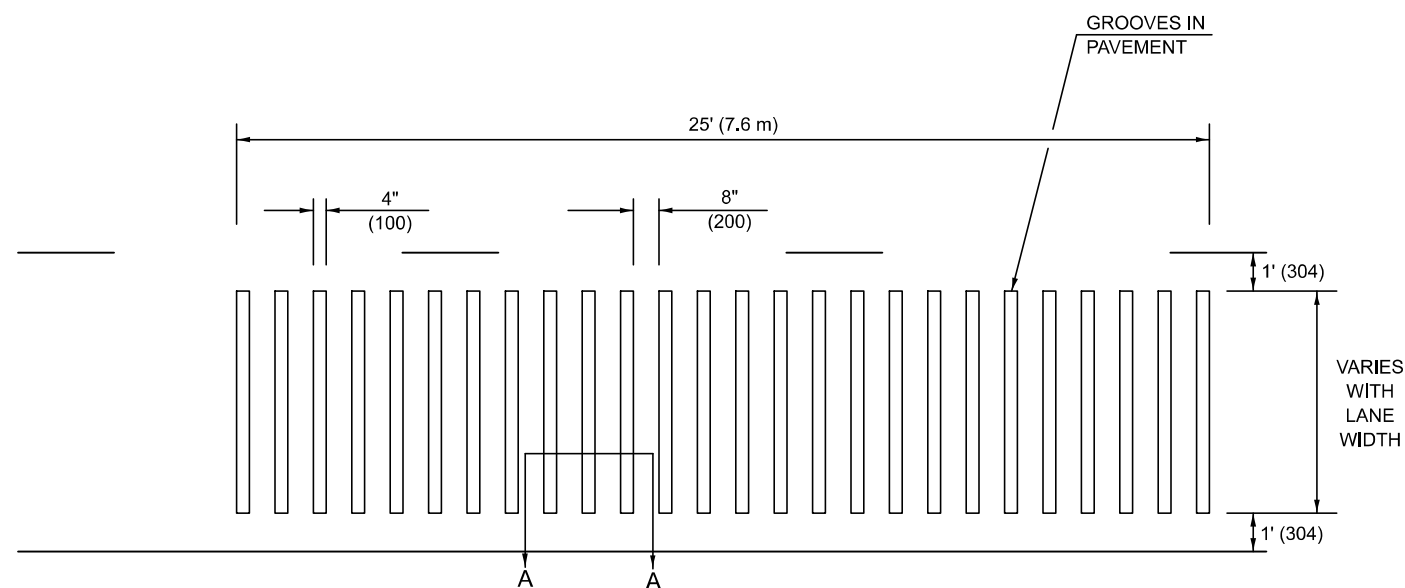
F.A.P. RTE.	SECTION	COUNTY	TOTAL SHEETS	SHEET NO.
758	3RS-5&(4,5)RS-3	PIATT	23	18
CONTRACT NO. 70G74				
ILLINOIS FED. AID PROJECT				

RUMBLE STRIP (ADVANCE OF INTERSECTIONS)

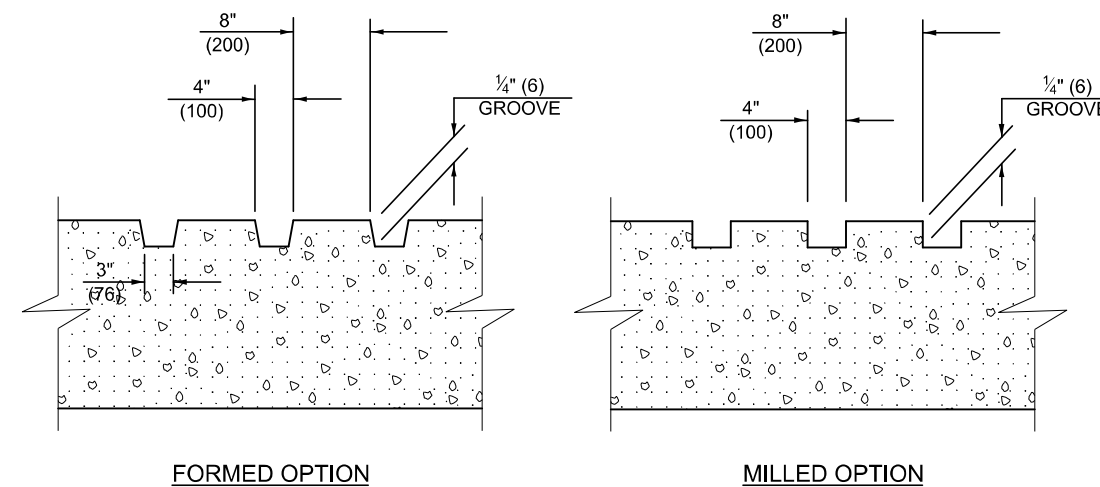


GENERAL NOTES

1. MILLED GROOVES SHALL BE CONSTRUCTED USING A 4" (100 mm) MILLING HEAD OR SERIES OF 4" (100 mm) MILLING HEADS CAPABLE OF CUTTING TO THE SPECIFIED DEPTH OR ANY VARIABLE DEPTH.
2. THIS WORK WILL BE MEASURED FOR PAYMENT PER EACH 25' (7.6 m) INDIVIDUAL RUMBLE STRIP APPLIED AND PAID FOR AT THE CONTRACT UNIT PRICE EACH FOR RUMBLE STRIP, WHICH PRICE SHALL INCLUDE ALL EQUIPMENT, MATERIAL, LABOR AND OTHER ITEMS REQUIRED TO INSTALL EACH INDIVIDUAL RUMBLE STRIP.



DETAIL A



SECTION A-A

Note: All dimensions are in INCHES (millimeters) unless otherwise shown.

DISTRICT 5 DETAIL NO. Z005530

USER NAME = Eric.Thomas	DESIGNED -	REVISED - 11/06
	DRAWN -	REVISED -
PLOT SCALE = 0.16666833' / in.	CHECKED -	REVISED -
PLOT DATE = 12/7/2022	DATE -	REVISED -

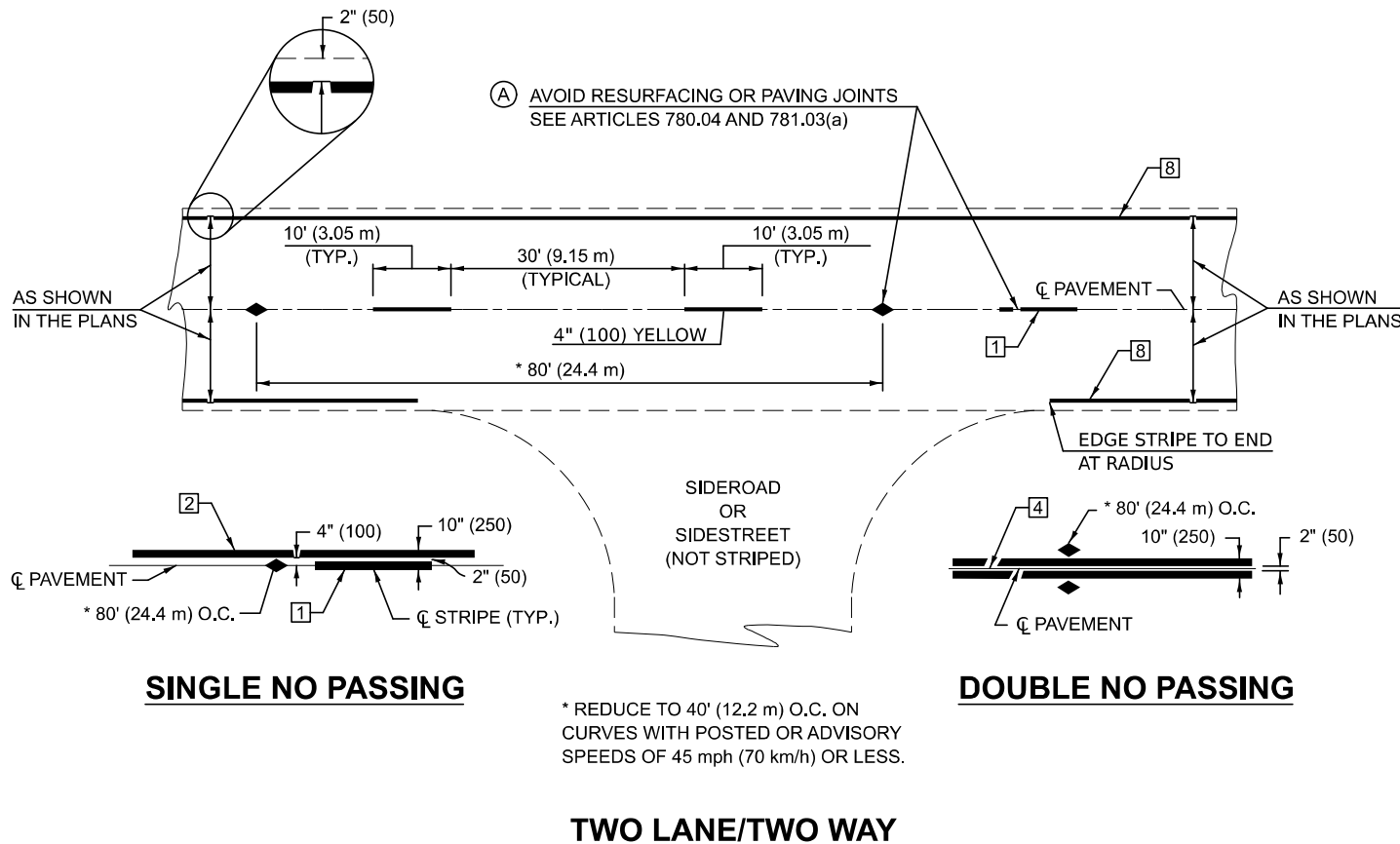
**STATE OF ILLINOIS
DEPARTMENT OF TRANSPORTATION**

RUMBLE STRIP (ADVANCE OF INTERSECTIONS)

SCALE: 1"=50' SHEET 1 OF 1 SHEETS STA. TO STA.

F.A.P. RTE.	SECTION	COUNTY	TOTAL SHEETS	SHEET NO.
758	3RS-5&(4,5)RS-3	PIATT	23	19
CONTRACT NO. 70G74				

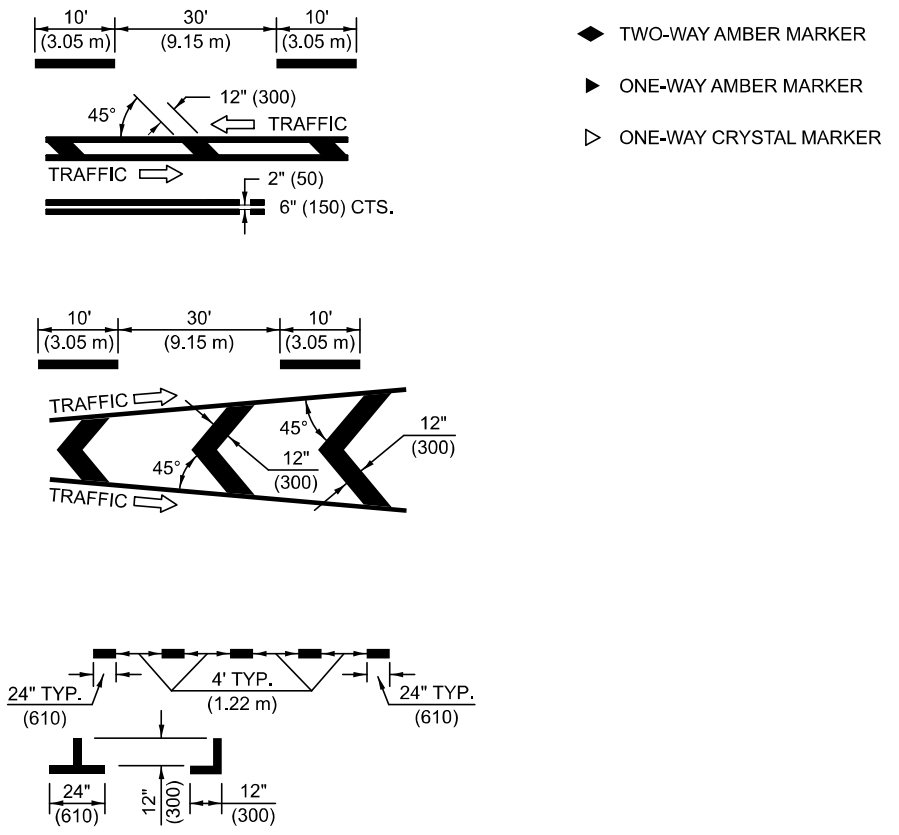
ILLINOIS FED. AID PROJECT



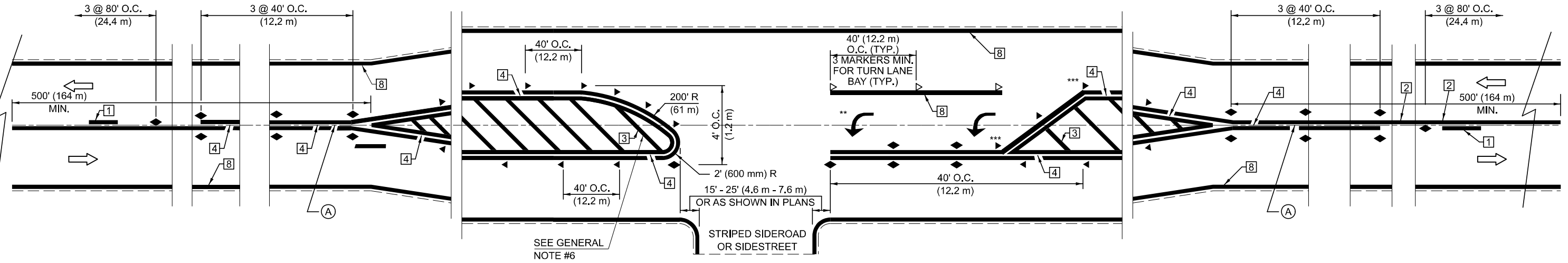
TYPICAL PAVEMENT MARKING LENGEND

- 1 4" (100) SKIP-DASH (YELLOW)
- 2 4" (100) SOLID (YELLOW)
- 3 12" (300) DIAGONAL (YELLOW)
- 4 4" (100) DOUBLE YELLOW (NARROW)
- 5 RESERVED
- 6 RESERVED
- 7 4" (100) SKIP-DASH (WHITE)
- 8 4" (100) SOLID (WHITE)
- 9 12" (300) DIAGONAL (WHITE)
- 10 6" (150) SOLID (WHITE)
- 11 24" (600) STOP BAR (WHITE)
- 12 8" (200) SOLID (WHITE)
- 13 4" (100) LANE LINE EXTENSIONS (WHITE)
- 14 4" (100) PARKING WHITE

TYPICAL PAVEMENT MARKERS LENGEND



RURAL LEFT TURN



*** REDUCE SPACING IF NECESSARY TO ASSURE MARKERS AT CORNER POINTS.
 ** TURN ARROWS SHALL BE PLACED AS SHOWN OF SHEET #2.

Note: All dimensions are in INCHES (millimeters) unless otherwise shown.

DISTRICT 5 DETAIL NO. 7800AAAA

MODEL: SHT_PLAN
FILE NAME: C:\Bentley\CONNECT101\Organization-Civil\IDOT_Standards\Civil\IDOT_Sheets.cel

USER NAME = Eric.Thomas	DESIGNED -	REVISED - 4/2014 JLA
PLOT SCALE = 0.16666833" / in.	DRAWN -	REVISED - 3/2019 SWN
PLOT DATE = 12/7/2022	CHECKED -	REVISED - 8/2022 JLA
	DATE -	REVISED - 9/2022 JWS

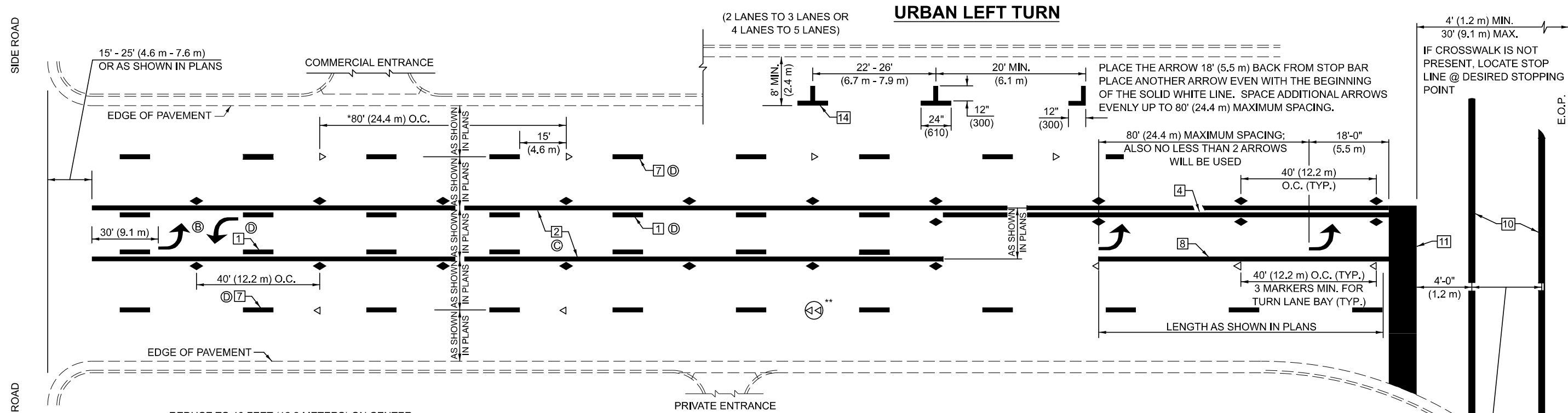
**STATE OF ILLINOIS
DEPARTMENT OF TRANSPORTATION**

**PAVEMENT MARKING AND MARKERS
(RURAL & URBAN APPLICATIONS)**

SCALE: 1"=50' SHEET 1 OF 4 SHEETS STA. TO STA.

F.A.P. RTE.	SECTION	COUNTY	TOTAL SHEETS	SHEET NO.
758	3RS-5&(4,5)RS-3	PIATT	23	20
CONTRACT NO. 70G74				
ILLINOIS FED. AID PROJECT				

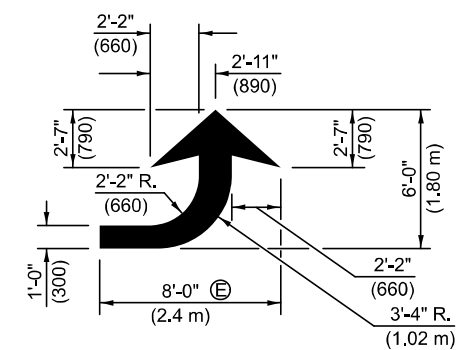
MODEL: SHT_PLAN
 FILE NAME: C:\Bentley\CONNECT1011\Organization-Civil\DOT_Standards\Cat\DOT_Sheets.cad



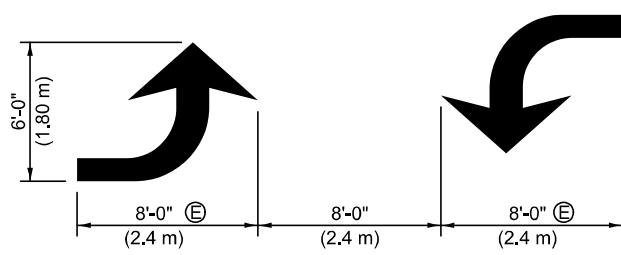
- * REDUCE TO 40 FEET (12.2 METERS) ON CENTER ON CURVES WHERE ADVISORY SPEEDS ARE 10 MPH (15 km/h) LOWER THAN POSTED SPEEDS.
- ** DOUBLE LANE LINE MARKERS SHALL BE SPECIFIED AND SPACED AS SHOWN IN HIGHWAY STANDARD 781001 FOR MULTI-LANE DIVIDED AND UNDIVIDED HIGHWAYS.

GENERAL NOTES:

- (B) TURN ARROW PAIRS SHALL BE PLACED AT 250' (75 m) INTERVALS AND SHALL BE EVENLY SPACED BETWEEN BOTH ENDS OF THE BIDIRECTIONAL LEFT TURN LANE.
- (C) THE SOLID YELLOW PAVEMENT MARKINGS [2] SHOULD GENERALLY START OR END NEAR THE RADIUS POINT OF EACH STREET RETURN EXCEPT WHERE ONE OR BOTH ENDS WOULD INCLUDE STOP BARS.
- (D) THE SKIP-DASH PAVEMENT MARKINGS [1] OR [7] SHOULD BE CENTERED BETWEEN BOTH ENDS OF EACH CITY BLOCK AND SHALL BE PLACED SO THEY LINE UP ACROSS FROM EACH OTHER. SEE EXAMPLE ON SHEET 2 OF 3.
- (E) USE LARGE ARROW SIZE FOR BOTH RURAL AND URBAN LOCATIONS. (SEE LAST PAGE OF SECTION 780x FOR SYMBOLS TABLE)

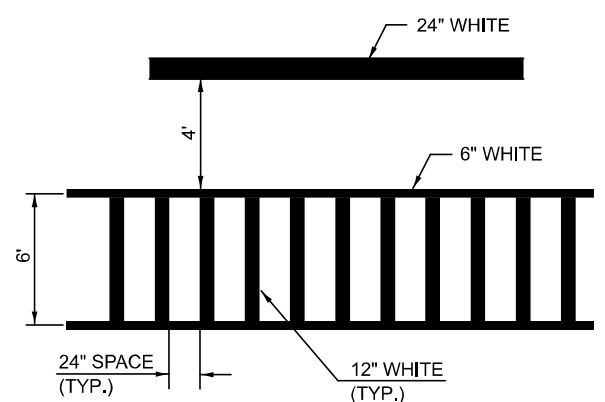


LEFT ARROW
 REVERSE FOR RIGHT ARROW
 AREA = 15.6 SQ. FT. (1.47 m)
 (WHITE)

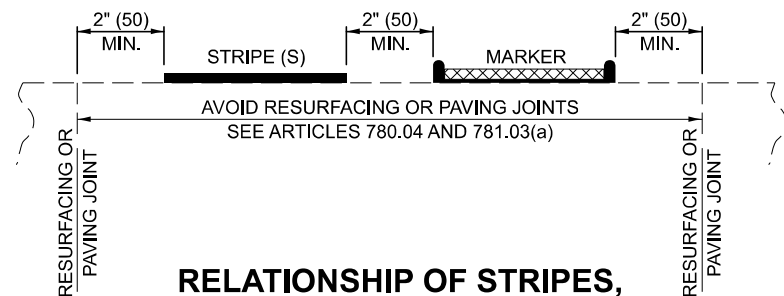


TYPICAL DOUBLE TURN ARROWS (WHITE)

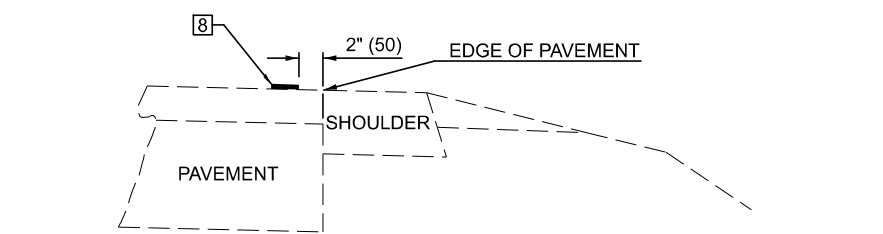
BLOOMINGTON-NORMAL CITY LIMITS ONLY



TYPICAL SPACING FOR CROSSWALKS & STOP BARS



RELATIONSHIP OF STRIPES, MARKERS AND JOINTS



RELATIONSHIP OF EDGE LINE TO EDGE OF PAVEMENT
 (SAFETY SHOULDER OR PAVED SURFACE)
 SEE ARTICLE 780.04

Note: All dimensions are in INCHES (millimeters) unless otherwise shown.

DISTRICT 5 DETAIL NO. 7800AAAA

USER NAME = Eric.Thomas	DESIGNED -	REVISED - 4/2014 JLA
	DRAWN -	REVISED - 3/2019 SWN
PLOT SCALE = 0.16666833 / in.	CHECKED -	REVISED - 8/2022 JLA
PLOT DATE = 12/7/2022	DATE -	REVISED - 9/2022 JWS

**STATE OF ILLINOIS
 DEPARTMENT OF TRANSPORTATION**

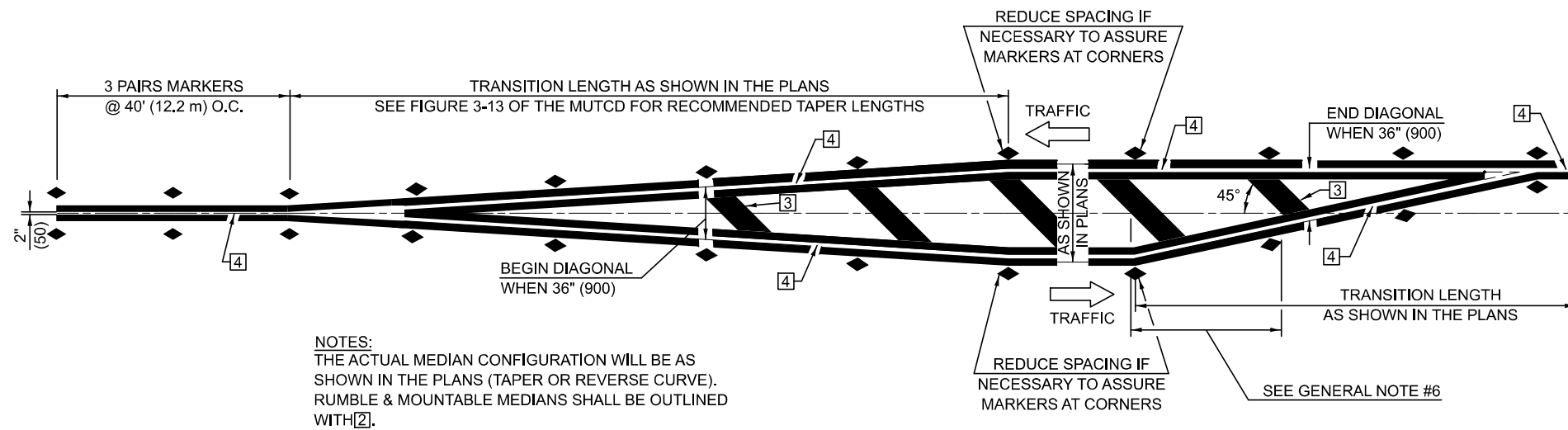
**PAVEMENT MARKING AND MARKERS
 (RURAL & URBAN APPLICATIONS)**

SCALE: 1"=50' SHEET 2 OF 4 SHEETS STA. TO STA.

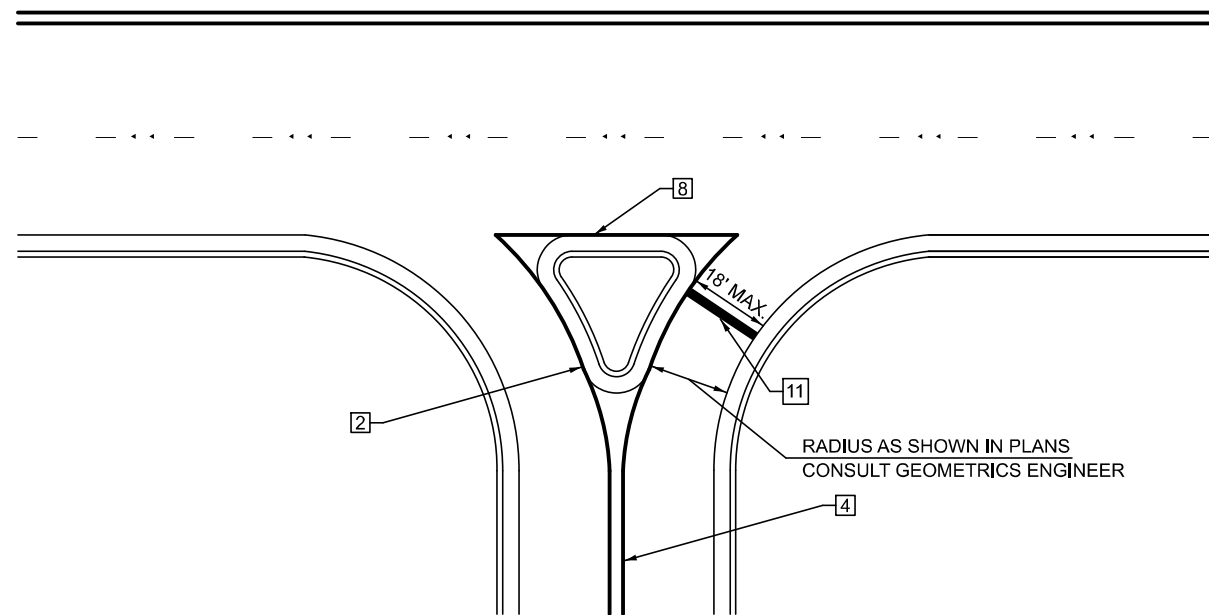
F.A.P. RTE.	SECTION	COUNTY	TOTAL SHEETS	SHEET NO.
758	3RS-5&(4,5)RS-3	PIATT	23	21
CONTRACT NO. 70G74				
ILLINOIS FED. AID PROJECT				

GENERAL NOTES

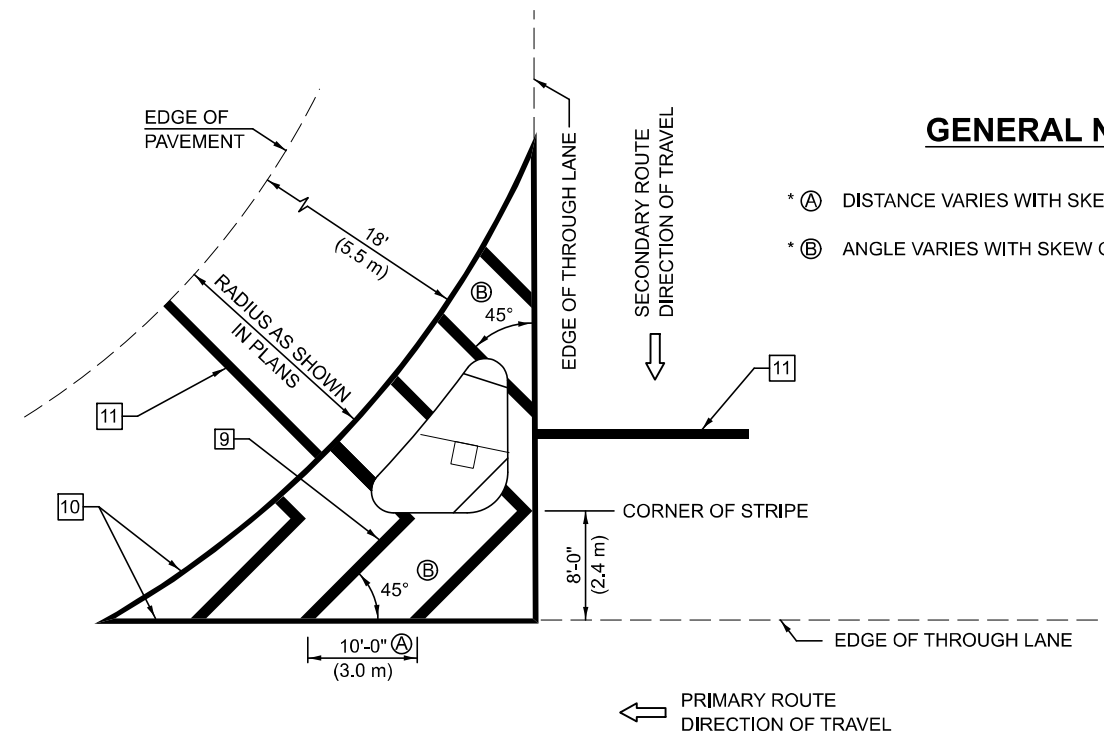
1. WHEN MEDIANS ARE PRESENT, PAVEMENT MARKINGS ARE TO BE PLACED ADJACENT TO MEDIANS.
2. SOME OF THE INFORMATION INCLUDED WITH THIS DETAIL MAY NOT BE APPLICABLE TO THIS IMPROVEMENT.
3. PAVEMENT MARKINGS ARE TO BE EXTENDED THROUGH OMISSIONS WHEN APPLICABLE.
4. A STRIPING KEY IS AVAILABLE ELSEWHERE AND SHALL BE SHOWN WHERE THE QUANTITIES ARE LISTED.
5. FINAL PAVEMENT MARKINGS SHALL BE IN PLACE PRIOR TO PLACING ANY RAISED REFLECTIVE PAVEMENT MARKERS.
6. THE FOLLOWING CRITERIA SHALL BE USED FOR SELECTING THE DIAGONAL PAVEMENT MARKING SPACING,
 - <30 MPH USE 15' (<50 km/h USE 4.5 m)
 - 30-45 MPH USE 20' (50-75 km/h USE 6.0 m)
 - >45 MPH USE 30' (>75 km/h USE 9.0 m)



TYPICAL MEDIAN TRANSITIONS



RIGHT IN - RIGHT OUT ACCESS



GENERAL NOTES

- * (A) DISTANCE VARIES WITH SKEW OF INTERSECTION.
- * (B) ANGLE VARIES WITH SKEW OF INTERSECTION.

ISLAND

* FOR RIGHT TURN LANE AND ISLAND STRIPING CONSULT GEOMETRICS ENGINEER.

Note: All dimensions are in INCHES (millimeters) unless otherwise shown.

DISTRICT 5 DETAIL NO. 7800AAAA

USER NAME = Eric.Thomas	DESIGNED -	REVISED - 4/2014 JLA
	DRAWN -	REVISED - 3/2019 SWN
PLOT SCALE = 0.16666833' / in.	CHECKED -	REVISED - 8/2022 JLA
PLOT DATE = 12/7/2022	DATE -	REVISED - 9/2022 JWS

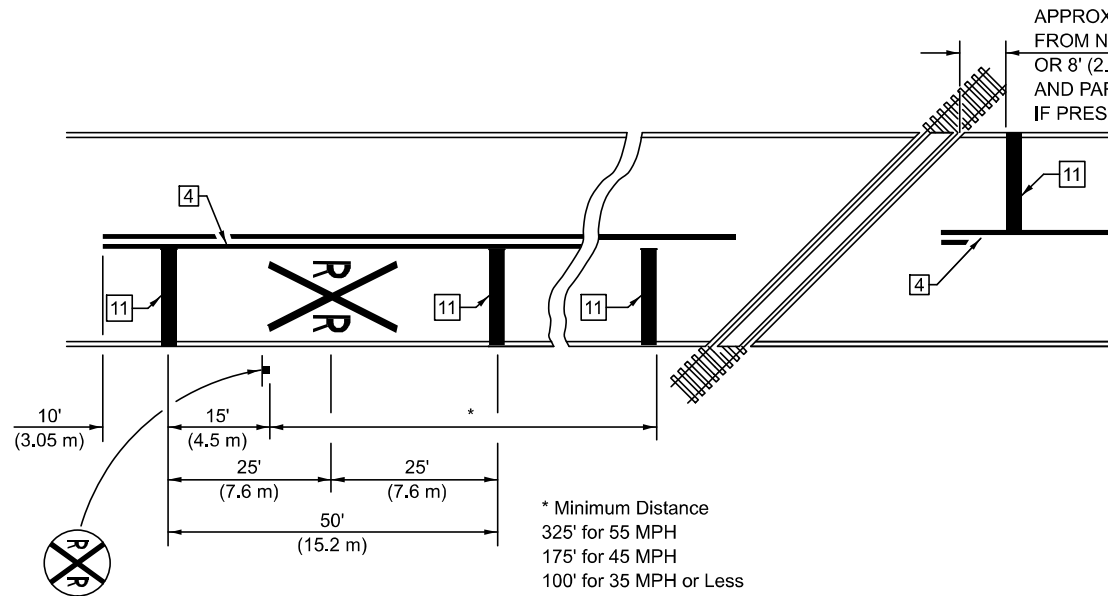
STATE OF ILLINOIS
DEPARTMENT OF TRANSPORTATION

PAVEMENT MARKING AND MARKERS
(RURAL & URBAN APPLICATIONS)

SCALE: 1"=50' SHEET 3 OF 4 SHEETS STA. TO STA.

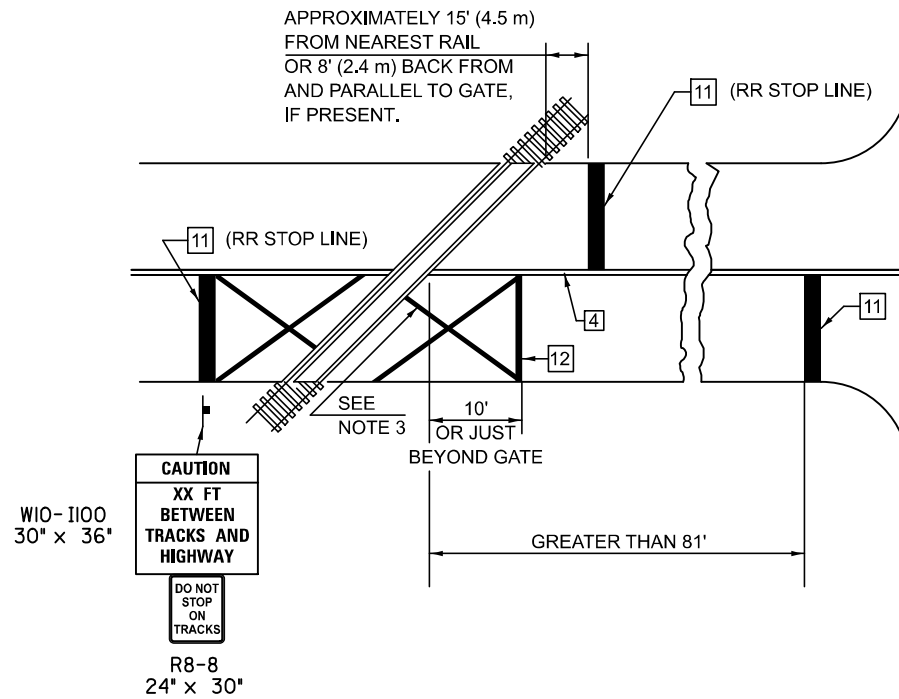
F.A.P. RTE.	SECTION	COUNTY	TOTAL SHEETS	SHEET NO.
758	3RS-5&(4,5)RS-3	PIATT	23	22
CONTRACT NO. 70G74				

ILLINOIS FED. AID PROJECT

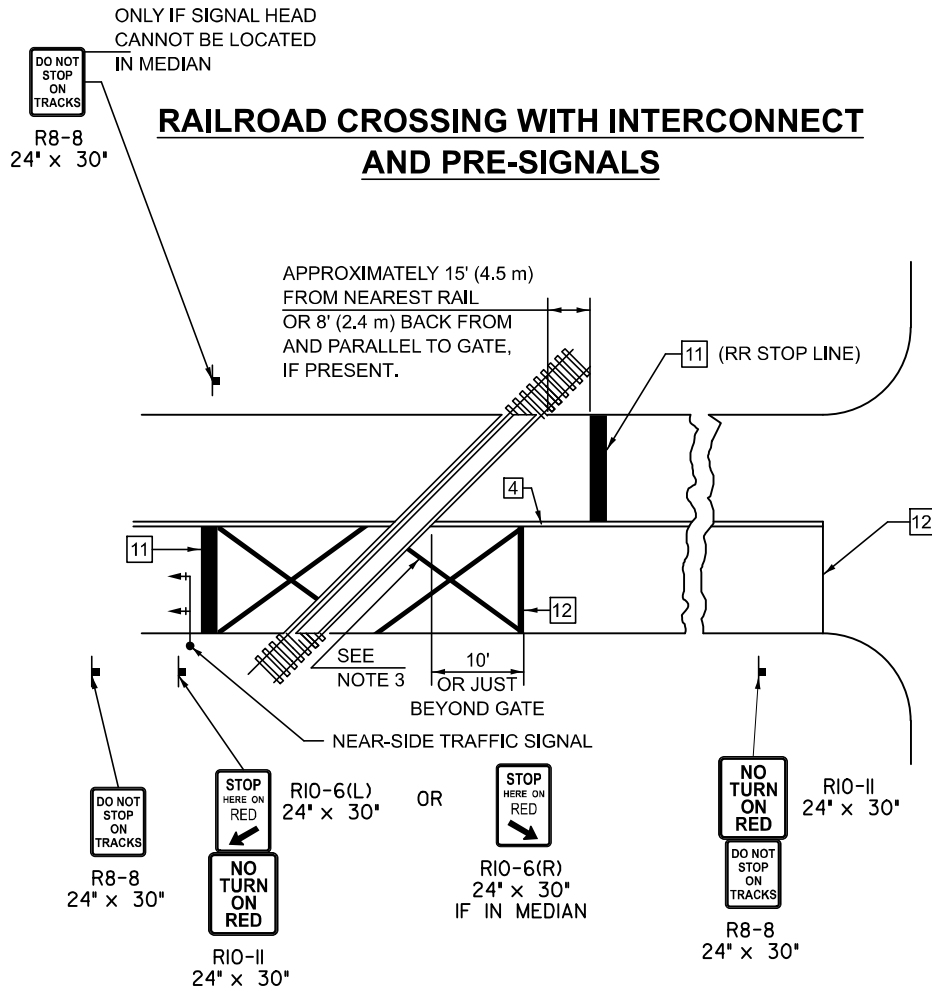


PAVEMENT MARKINGS AT RAILROAD-HIGHWAY GRADE CROSSING

RAILROAD CROSSING WITH INTERCONNECT ONLY



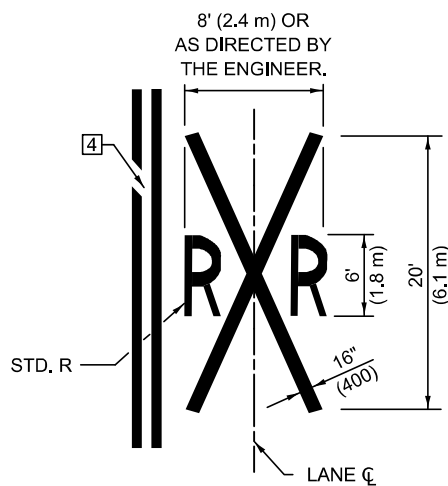
RAILROAD CROSSING WITH INTERCONNECT AND PRE-SIGNALS



GENERAL NOTES

1. SUPPLEMENTAL PAVEMENT MARKINGS TO BE INSTALLED ONLY ON APPROACHES TO INTERSECTIONS CONTROLLED BY TRAFFIC SIGNALS WHICH ARE INTERCONNECTED WITH THE RAILROAD WARNING SIGNALS.
2. EXTEND PAVEMENT MARKINGS TO THE INTERSECTION ONLY WHERE NEAR-SIDE TRAFFIC SIGNALS ARE USED.
3. 6" WHITE PAVEMENT MARKINGS AT 45° TO PAVEMENT, 8' CENTER TO CENTER.
4. XX DISTANCE TO BE SHOWN ON SIGN MEASURED FROM A POINT 6 FEET FROM THE RAIL CLOSEST TO THE INTERSECTION OR FROM THE CLOSEST POINT ALONG THE EXIT GATE IF PRESENT OVER THE ROADWAY WHEN IN THE LOWERED POSITION TO THE STOP BAR OR CROSSWALK, WHICH EVER IS CLOSEST, ROUNDED DOWN TO NEAREST 5 FEET. WHERE THERE IS NO STOP LINE, MEASURE TO POINT WHERE DRIVER HAS A VIEW OF APPROACHING TRAFFIC.
5. THE CLEARANCE SIGN IS ALSO TO BE USED AS AN INTERIM MEASURE AT LOCATIONS WITH INTERCONNECTED INTERSECTION TRAFFIC SIGNALS WHERE IT IS PLANNED TO CHANGE THEM TO NEAR-SIDE SIGNALS AT A FUTURE TIME. IN THIS CASE, THE DISTANCE TO BE SHOWN ON THE SIGN IS MEASURED FROM THE EDGE OF THE STRIPED-OUT AREA INSTEAD OF 6 FEET FROM THE RAIL. THE SIGN IS TO BE REMOVED WHEN THE NEAR-SIDE SIGNALS ARE INSTALLED AND THE PAVEMENT MARKINGS EXTENDED TO THE INTERSECTION.

SUPPLEMENT PAVEMENT MARKING TREATMENT FOR RAILROAD-HIGHWAY GRADE CROSSING



ALTERNATE SIGNS



NOTES

THE TRAVERSE SPREAD OF THE "X" MAY VARY ACCORDING TO LANE WIDTH.

ON MULTI-LANE ROADS, THE STOP LINES SHALL EXTEND ACROSS ALL APPROACH LANES AND SEPARATE RXR SYMBOLS SHALL BE PLACED ADJACENT TO EACH OTHER IN EACH LANE.

WHEN THE PAVEMENT MARKING SYMBOL IS USED, A PORTION OF THE SYMBOL SHOULD BE LOCATED DIRECTLY ADJACENT TO THE ADVANCE WARNING SIGN (W10-1) AS PLACED BY TABLE II-1, CONDITION B OF THE MUTCD.

Note: All dimensions are in INCHES (millimeters) unless otherwise shown.

DISTRICT 5 DETAIL NO. 7800AAAA

MODEL: SHT_PLAN
FILE NAME: C:\Bentley\CONNECT\10110\Organization-Civil\DOT_Standards\Civil\DOT_Sheets.cel

USER NAME = Eric.Thomas	DESIGNED -	REVISED - 4/2014 JLA
	DRAWN -	REVISED - 3/2019 SWN
PLOT SCALE = 0.16666833' / in.	CHECKED -	REVISED - 8/2022 JLA
PLOT DATE = 12/7/2022	DATE -	REVISED - 9/2022 JWS

**STATE OF ILLINOIS
DEPARTMENT OF TRANSPORTATION**

**PAVEMENT MARKING AND MARKERS
(RURAL & URBAN APPLICATIONS)**

SCALE: 1"=50' SHEET 4 OF 4 SHEETS STA. TO STA.

F.A.P. RTE.	SECTION	COUNTY	TOTAL SHEETS	SHEET NO.
758	3RS-5&(4,5)RS-3	PIATT	23	23
CONTRACT NO. 70G74				

ILLINOIS FED. AID PROJECT