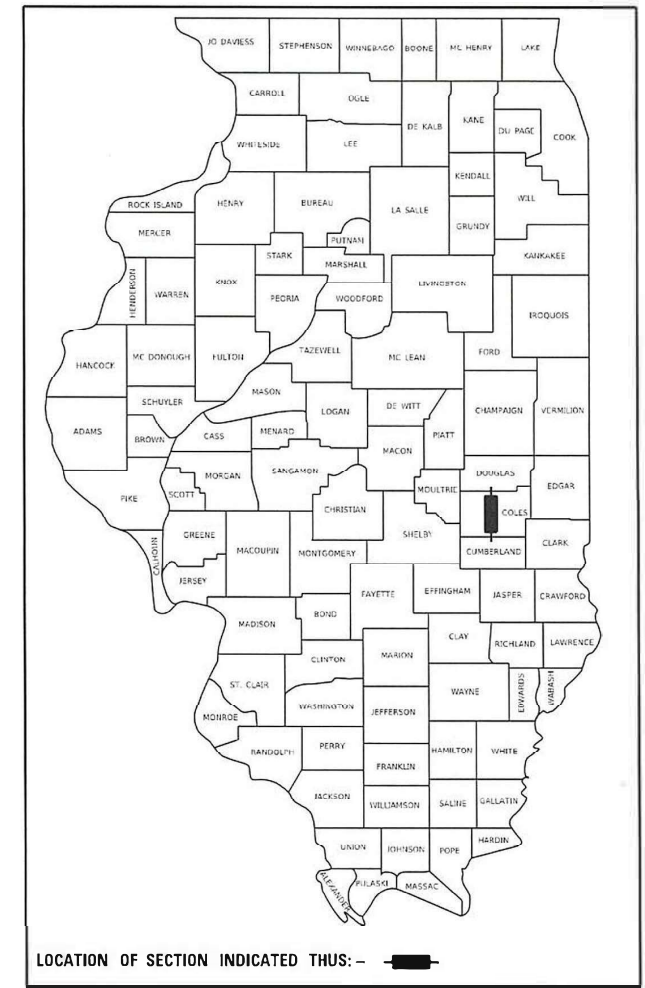


STATE OF ILLINOIS
DEPARTMENT OF TRANSPORTATION

F.A. RTE.	SECTION	COUNTY	TOTAL SHEETS	SHEET NO.
	10RS-2	COLES	25	1
		ILLINOIS	CONTRACT NO. 74903	

*FAU 7643, FAS 1668, FAS 1667A, FAS 1667, OR 5

D-97-020-19



**PROPOSED
HIGHWAY PLANS**

VARIOUS ROUTES
[(FAU 7643, FAS 1668, FAS 1667A, FAS 1667,
OR 5) SOUTH 4TH STREET]
SECTION 10RS-2
PROJECT STP-TXLG(991)
DESIGNED OVERLAY
COLES COUNTY
C-97-032-19

FOR INDEX OF SHEETS, SEE SHEET NO. 2

ADT= 1400 (2019)

STRUCTURE OMISSIONS

015-0027

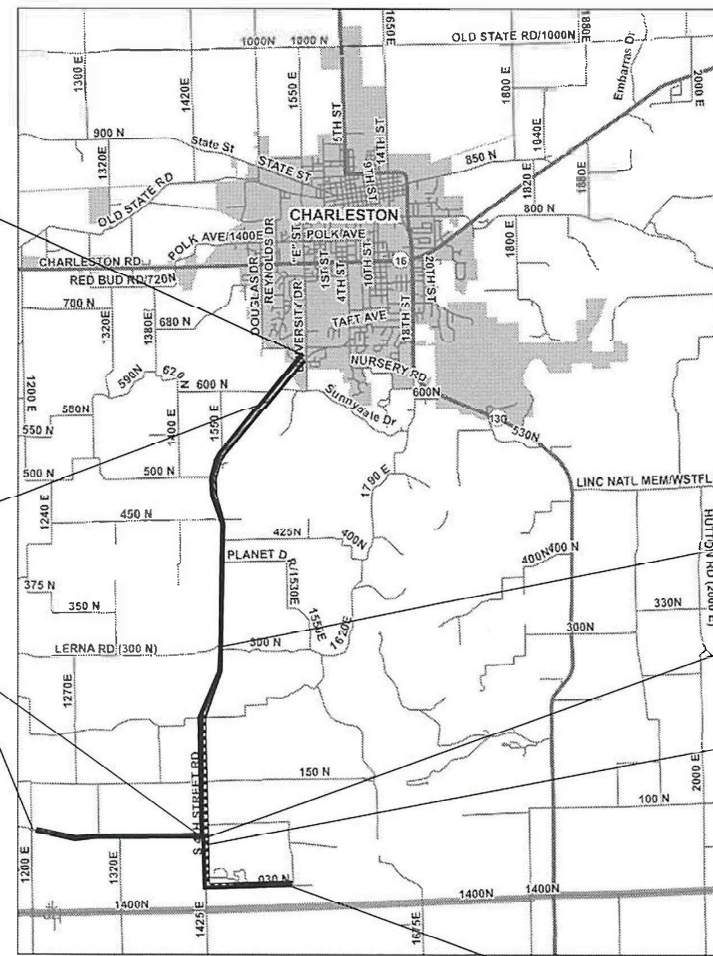
STA. 1304 + 61 TO STA. 1307 + 04

MILE MARKER 6.65 TO 6.68

015-0028

STA. 1132 + 16 TO STA. 1133 + 16

MILE MARKER 3.465 TO 3.467



PROJECT ENDS
STATION 1332 + 16
MILE MARKER 7.17

STRUCTURE OMISSION 015-0027
STATION 1304 + 61 TO STATION 1307 + 04
MILE MARKER 6.65 TO 6.68

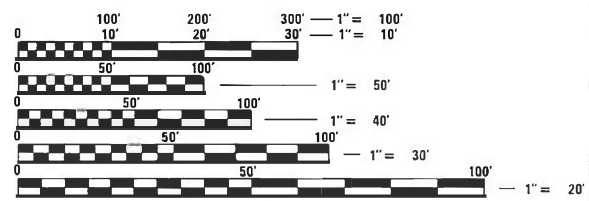
FAS ROUTE 1667
STATION 360 + 34 TO STATION 464 + 74.10
MILE MARKER 0.00A TO 1.90A

STRUCTURE OMISSION 015-0028
MILE MARKER 3.465 TO 3.467
STATION 1132 + 06 TO STATION 1133 + 06

STATION 14 + 78.70 BK (WEST)
STATION 1016 + 15 AH

STATION EQUATION
STATION 464 + 74.10 BK (FAS 1667) =
STATION 1010 + 00 AH (FAS 1668)

PROJECT BEGINS
STATION 521 + 00
MILE MARKER 0.00



FULL SIZE PLANS HAVE BEEN PREPARED USING STANDARD ENGINEERING SCALES. REDUCED SIZED PLANS WILL NOT CONFORM TO STANDARD SCALES. IN MAKING MEASUREMENTS ON REDUCED PLANS, THE ABOVE SCALES MAY BE USED.

J.U.L.I.E.
JOINT UTILITY LOCATION INFORMATION FOR EXCAVATORS
1-800-892-0123
OR 811

PROJECT ENGINEER: BRIAN LEWIS
PROJECT MANAGER: DRAKE MCHUGH

CONTRACT NO. 74903

GROSS LENGTH = 47,871 FT. = 9.07 MILE
NET LENGTH = 47,568 FT. = 9.01 MILE

STATE OF ILLINOIS
DEPARTMENT OF TRANSPORTATION

SUBMITTED DECEMBER 14 20 23
Jeffrey P. Meyer, Jr.
REGIONAL ENGINEER

February 2, 2024
Scott A. Etkin
ENGINEER OF DESIGN AND ENVIRONMENT

February 2, 2024
Stephen M. Smith
DIRECTOR OF HIGHWAYS PROJECT IMPLEMENTATION

PRINTED BY THE AUTHORITY
OF THE STATE OF ILLINOIS

GENERAL NOTES

THE WORK INCLUDED IN SECTION 10RS-2 CONSISTS OF HMA SURFACE REMOVAL, TACK COAT, HMA BINDER COURSE, HMA SURFACE COURSE, HMA SHOULDERS AT SELECTED LOCATIONS, AGGREGATE SHOULDER WEDGE, RAISED REFLECTIVE PAVEMENT MARKER REMOVAL AND REPLACEMENT, INSERTION CULVERT LINER 24", PAVEMENT MARKING, AND OTHER WORK NECESSARY TO COMPLETE THIS SECTION.

WHERE THE HMA SHOULDER 4 1/2" WILL BE PLACED THE EXISTING PE/MBT/FE WILL BE REMOVED AND REPLACED WITH HMA SHOULDER 4 1/2". MATERIAL FOR AGGREGATE SURFACE COURSE AND AGGREGATE WEDGE SHOULDER SHALL BE CRUSHED STONE OR CRUSHED CONCRETE.

CLASS C PATCHES WILL BE CONSTRUCTED AT THE RUMBLE STRIIP LOCATIONS.

PAINT PAVEMENT MARKING 4" CONSISTS OF 94120 FEET OF WHITE AND 55159 OF YELLOW. THERMOPLASTIC PAVEMENT MARKING WILL BE USED FOR THE TURN LANE, LETTERS AND SYMBOLS AND GORE AREAS AND STOP BARS AND ALL SHALL BE WHITE.

THE RAISED REFLECTIVE PAVEMENT MARKER REMOVAL QUANTITY DIFFERS FROM THE RAISED REFLECTIVE PAVEMENT MARKERS.

SHORT TERM PAVEMENT MARKING APPLIED TO ALL MILLED SURFACES SHALL BE PAINT AND THOSE APPLIED TO THE HMA COURSES SHALL BE TAPE.

THE FOLLOWING RATES OF APPLICATION HAVE BEEN USED IN CALCULATING PLAN QUANTITIES:

BITUMINOUS MATERIALS (TACK COAT)	0.05 LBS/SQ FT	MILLED SURFACE
	0.025 LBS/SQ FT	BETWEEN LIFTS
HOT-MIX ASPHALT	112 LBS/SQ YD/IN	
AGGREGATE	2.05 POUND/CU YD	

THE FOLLOWING MIXTURE REQUIREMENTS ARE APPLICABLE TO THIS PROJECT:

LOCATION(S)	MIXTURE USE(S)	PG	DESIGN AIR VOIDS	MIXTURE COMPOSITION	FRICTION AGGREGATE	MIXTURE WEIGHT	QUALITY MANAGEMENT PROGRAM	SUBLOT SIZE	MATERIAL TRANSFER DEVICE (REQUIRED?)
MAINLINE	HMA SURFACE COURSE, IL-9.5, MIX "C", N70 (2")	PG 64-22	4.0% @ N=70	IL - 9.5	MIXTURE C	N70	PFP	1000	N/A
MAINLINE	HMA BINDER COURSE, IL-9.5FG, N70 (1.75")	PG 64-22	4.0% @ N=70	IL - 9.5FG	N/A	N70	PFP	1000	N/A
4 1/2" SHOULDER	HMA BINDER COURSE, IL-19.0, N70	PG 64-22	4.0% @ N=70	IL - 19.0	N/A	N70	QC/QA	3000	N/A
PATCHING	HMA BINDER COURSE, IL-19.0, N70	PG 64-22	4.0% @ N=70	IL - 19.0	N/A	N70	QC/QA	3000	N/A
INCIDENTAL	HMA SURFACE COURSE, IL-9.5, MIX "C", N70	PG 64-22	4.0% @ N=70	IL - 9.5	MIXTURE C	N70	QC/QA	3000	N/A

INDEX OF SHEETS

1	COVER SHEET
2	GENERAL NOTES, INDEX OF SHEETS, AND HIGHWAY STANDARDS
3-4	SUMMARY OF QUANTITIES
5	TYPICAL SECTIONS
6	RURAL ENTRANCE & MAILBOX TURNOUT DETAILS WITH SHOULDERS
7	PROJECT DETAILS
8-11	SCHEDULE OF QUANTITIES
12-20	PLAN SHEETS
21-24	DISTRICT 7 PAVEMENT MARKING DETAILS
25	DISTRICT 7 RUMBLE STRIP DETAILS

THE FOLLOWING STANDARDS ARE A PART OF THESE PLANS AND ARE INCLUDED FOLLOWING THE LAST NUMBERED SHEET OF THE PLANS.

000001-08	STANDARD SYMBOLS, ABBREVIATIONS, AND PATTERNS
001001-02	AREAS OF REINFORCEMENT BARS
001006	DECIMAL OF AN INCH AND OF A FOOT
442201-03	CLASS C AND D PATCHES
701001-02	OFF-ROAD OPERATIONS, 2L, 2W, MORE THAN 15' AWAY
701006-05	OFF-ROAD OPERATIONS, 2L, 2W, 15' TO 24" FROM PAVEMENT EDGE
701011-04	OFF-ROAD OPERATIONS, 2L, 2W, DAY ONLY
701201-05	LANE CLOSURE, 2L, 2W, DAY ONLY FOR SPEEDS ≥ 45 MPH
701301-04	LANE CLOSURE, 2L, 2W, SHORT TIME OPERATIONS
701306-04	LANE CLOSURE, 2L, 2W, SLOW MOVING OPERATIONS DAY ONLY, FOR SPEEDS
701311-03	LANE CLOSURE, 2L, 2W, MOVING OPERATIONS-DAY ONLY
701336-07	LANE CLOSURE, 2L,2W,WORK AREAS IN SERIES FOR SPEEDS ≥ 45 MPH
701901-09	TRAFFIC CONTROL DEVICES
406201-01	MAILBOX TURNOUT
420001-10	PAVEMENT JOINTS
667101-02	PERMANENT SURVEY MARKERS
780001-05	TYPICAL PAVEMENT MARKINGS
781001-04	TYPICAL APPLICATIONS RAISED REFLECTIVE PAVEMENT MARKERS

REV. - MS

* FAU 7643, FAS 1668, FAS 1667A, FAS 1667, OR 5

MODEL: D:\default
 FILE: M:\mhc\p\111024\paw\benley.com\PROJECTS\174903\CADD\DATA\CAD\sheet\DOT_74903-SP-general.dgn

USER NAME = Mona.Steffen	DESIGNED -	REVISED -	STATE OF ILLINOIS DEPARTMENT OF TRANSPORTATION	GENERAL NOTES, INDEX OF SHEETS HIGHWAY STANDARDS		F.A. RTE.	SECTION	COUNTY	TOTAL SHEETS	SHEET NO.					
PLOT SCALE = 40.0000' / in.	DRAWN -	REVISED -		SCALE:	SHEET	OF	SHEETS	STA.	TO	STA.	*	10RS-2	COLES	25	2
PLOT DATE = 12/15/2023	CHECKED -	REVISED -		CONTRACT NO. 74903											
	DATE -	REVISED -		ILLINOIS FED. AID PROJECT											

80% FED
20% STATE

80% FED
20% STATE

SUMMARY OF QUANTITIES			TOTAL QUANTITIES	CONSTRUCTION TYPE CODE			SUMMARY OF QUANTITIES			TOTAL QUANTITIES	CONSTRUCTION TYPE CODE		
CODE NO	ITEM	UNIT		RURAL 0005	URBAN 0005	Y234 0005	CODE NO	ITEM	UNIT		RURAL 0005	URBAN 0005	Y234 0005
20200600	EXCAVATING AND GRADING EXISTING SHOULDER	UNIT	89	82		7	48102100	AGGREGATE WEDGE SHOULDER, TYPE B	TON	1643	984	68	591
40200800	AGGREGATE SURFACE COURSE, TYPE B	TON	68	57	3	8	48203015	HOT-MIX ASPHALT SHOULDERS, 4 1/2"	SQ YD	3833	3614		219
40600290	BITUMINOUS MATERIALS (TACK COAT)	POUND	82418	72755	4487	5176	54390180	INSERTION CULVERT LINER 24"	FOOT	63	63		
40600370	LONGITUDINAL JOINT SEALANT	FOOT	48722	42785	2800	3137	67000400	ENGINEER'S FIELD OFFICE, TYPE A	CAL MO	5	4.4	0.3	0.3
40600982	HOT-MIX ASPHALT SURFACE REMOVAL - BUTT JOINT	SO YD	785	330	345	110	67100100	MOBILIZATION	L SUM	1	0.88	0.06	0.06
40600990	TEMPORARY RAMP	SO YD	91	39	39	13	70100450	TRAFFIC CONTROL AND PROTECTION, STANDARD	L SUM	1	0.88	0.06	0.06
40602970	HOT-MIX ASPHALT BINDER COURSE, IL-9.5FG, N70	TON	13902	12478	651	773	701201						
40604052	HOT-MIX ASPHALT SURFACE COURSE, IL-9.5, MIX "C", N70	TON	15888	14261	744	883	70100460	TRAFFIC CONTROL AND PROTECTION, STANDARD	L SUM	1	0.88	0.06	0.06
44000155	HOT-MIX ASPHALT SURFACE REMOVAL, 1 1/2"	SO YD	141859	127326	6646	7887	701306						
44004250	PAVED SHOULDER REMOVAL	SO YD	442	442			70100600	TRAFFIC CONTROL AND PROTECTION, STANDARD	L SUM	1	0.88	0.06	0.06
44201359	CLASS C PATCHES, TYPE IV, 10 INCH	SO YD	91.7	91.7			701336						
44201765	CLASS D PATCHES, TYPE II, 10 INCH	SO YD	129	129			70107025	CHANGEABLE MESSAGE SIGN	CAL DA	42	36	3	3
44201769	CLASS D PATCHES, TYPE III, 10 INCH	SO YD	78	54	24		70300100	SHORT TERM PAVEMENT MARKING	FOOT	48840	43444	2798	2598
44201771	CLASS D PATCHES, TYPE IV, 10 INCH	SO YD	564	447		117	70300150	SHORT TERM PAVEMENT MARKING REMOVAL	SO FT	4070	3620	233	217
							70300221	TEMPORARY PAVEMENT MARKING - LINE 4"-- PAINT	FOOT	144944	127387	10804	6753
							*78000100	THERMOPLASTIC PAVEMENT MARKING - LETTERS AND SYMBOLS	SO FT	47	47		

* SPECIALTY ITEM

REV. - MS

MODEL: Default
 FILE: M:\e:\pww\ltdet.pw\benefit.com\pww\DOT\Documents\DOT Office\District 7\Projects\74903\CADD\as\CD\sheet\074903-eh-SQ0.dgn

USER NAME = myra.oltman	DESIGNED -	REVISED -
PLOT SCALE = 100.0000' / in.	DRAWN -	REVISED -
PLOT DATE = 1/30/2024	CHECKED -	REVISED -
	DATE -	REVISED -

STATE OF ILLINOIS
DEPARTMENT OF TRANSPORTATION

SUMMARY OF QUANTITIES

SCALE: SHEET OF SHEETS STA. TO STA.

F.A.* RTE.	SECTION	COUNTY	TOTAL SHEETS	SHEET NO.
*	10RS-2	COLES	25	3
CONTRACT NO. 74903				
ILLINOIS FED. AID PROJECT				

80% FED
20% STATE

80% FED
20% STATE

SUMMARY OF QUANTITIES			TOTAL QUANTITIES	CONSTRUCTION TYPE CODE			SUMMARY OF QUANTITIES			TOTAL QUANTITIES	CONSTRUCTION TYPE CODE		
CODE NO	ITEM	UNIT		RURAL 0005	URBAN 0005	Y234 0005	CODE NO	ITEM	UNIT		RURAL 0005	URBAN 0005	Y234 0005
* 78000400	THERMOPLASTIC PAVEMENT MARKING - LINE 6"	FOOT	211	211			X4080052	INCIDENTAL HOT-MIX ASPHALT SURFACING (SPECIAL)	TON	650	626	16	8
* 78000500	THERMOPLASTIC PAVEMENT MARKING - LINE 8"	FOOT	290	290									
* 78000600	THERMOPLASTIC PAVEMENT MARKING - LINE 12"	FOOT	136	136			Z0049799	PROTECTING OR RESETTING SURVEY MARKERS	EACH	2	1	1	
* 78000650	THERMOPLASTIC PAVEMENT MARKING - LINE 24"	FOOT	34	34			Z0055600	RUMBLE STRIP	SO YD	92	92		
* 78001110	PAINT PAVEMENT MARKING - LINE 4"	FOOT	149279	131722	10804	6753							
* 78011000	GROOVING FOR RECESSED PAVEMENT MARKING, LETTERS AND SYMBOLS	SQ FT	47	47									
* 78011035	GROOVING FOR RECESSED PAVEMENT MARKING 7"	FOOT	211	211									
* 78011045	GROOVING FOR RECESSED PAVEMENT MARKING 9"	FOOT	290	290									
* 78011065	GROOVING FOR RECESSED PAVEMENT MARKING 13"	FOOT	136	136									
* 78011125	GROOVING FOR RECESSED PAVEMENT MARKING 25"	FOOT	34	34									
* 78100100	RAISED REFLECTIVE PAVEMENT MARKER	EACH	616	548	35	33							
78300200	RAISED REFLECTIVE PAVEMENT MARKER REMOVAL	EACH	464	413	27	24							
X0326440	SURFACE REMOVAL, VARIABLE DEPTH (SPECIAL)	SO YD	5141	4956	123	62							
X4060995	TEMPORARY RAMP (SPECIAL)	SO YD	1481	1441	21	19							

* SPECIALTY ITEM

REV. - MS

*FAU 7643, FAS 1668, FAS 1667A, FAS 1667, OR 5

MODEL: Default
FILE NAME: p:\w\l\dot-cw\benitey.com\PHWDOT\Documents\DOT Offices\District 7\Projects\74903\CADD\Drawings\74903-eth_S00.dgn

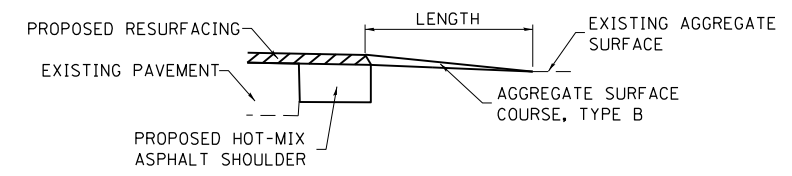
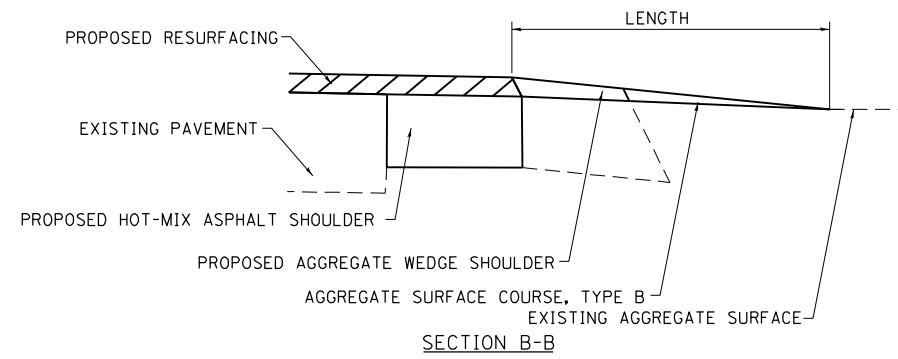
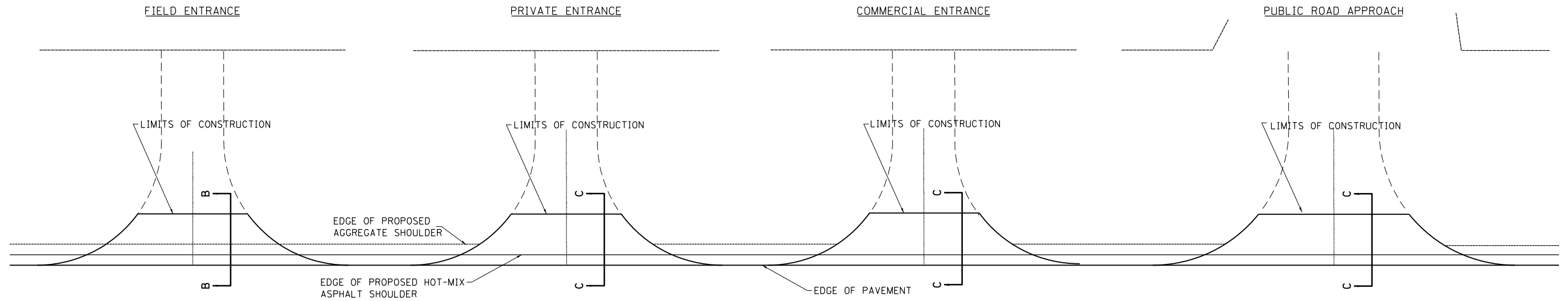
USER NAME = myra.oltman	DESIGNED -	REVISED -
	DRAWN -	REVISED -
PLOT SCALE = 100.0000' / in.	CHECKED -	REVISED -
PLOT DATE = 1/30/2024	DATE -	REVISED -

STATE OF ILLINOIS
DEPARTMENT OF TRANSPORTATION

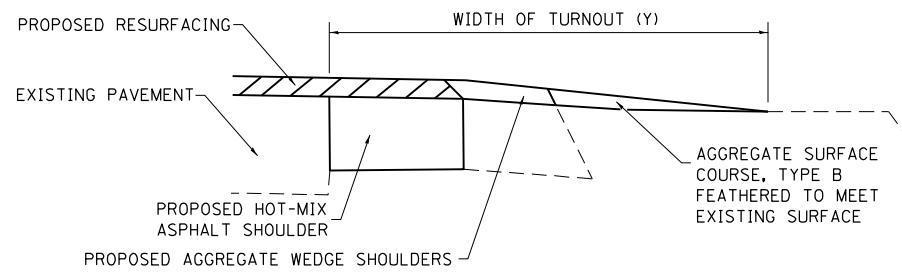
SUMMARY OF QUANTITIES

SCALE: SHEET OF SHEETS STA. TO STA.

F.A.* RTE.	SECTION	COUNTY	TOTAL SHEETS	SHEET NO.
*	10R5-2	COLES	25	4
CONTRACT NO. 74903				
ILLINOIS FED. AID PROJECT				

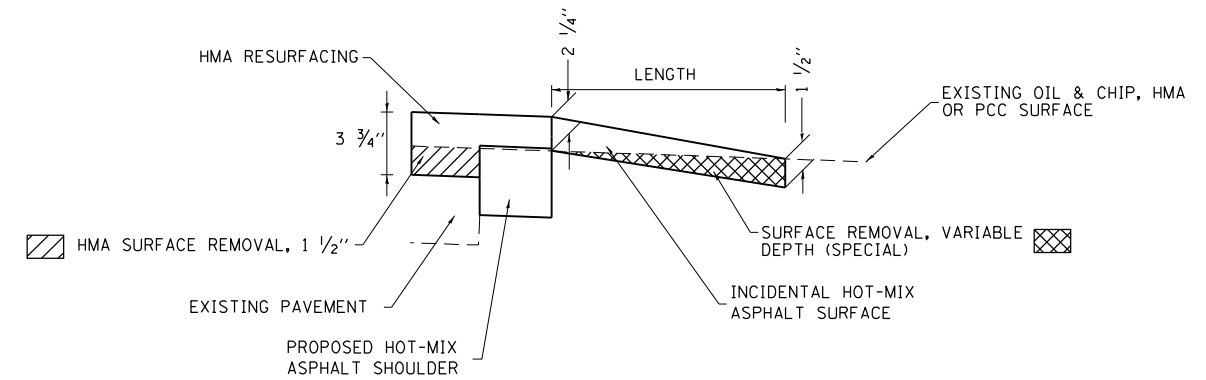


SECTION C-C



TYPICAL SECTION AT MAILBOX TURNOUT

NOTE: SEE STANDARD 406201 FOR MAILBOX TURNOUT DETAILS



SECTION C-C

NOTES

LENGTH = 10' UNLESS OTHERWISE NOTED ON PLANS

THE THICKNESS OF THE HOT-MIX ASPHALT SHOULDERS THROUGH AGGREGATE COMMERCIAL ENTRANCES AND PUBLIC ROADS SHALL BE 10". THE COST OF THE EXTRA THICKNESS SHALL BE INCLUDED WITH THE HOT-MIX ASPHALT SHOULDERS PAY ITEM.

MODEL: Default
FILE: Mailbox_SpecSheet.dwg
PROJECT: 74903-CD000000-0000-0000-0000-000000000000
PROJECT: 74903-CD000000-0000-0000-0000-000000000000
PROJECT: 74903-CD000000-0000-0000-0000-000000000000
PROJECT: 74903-CD000000-0000-0000-0000-000000000000

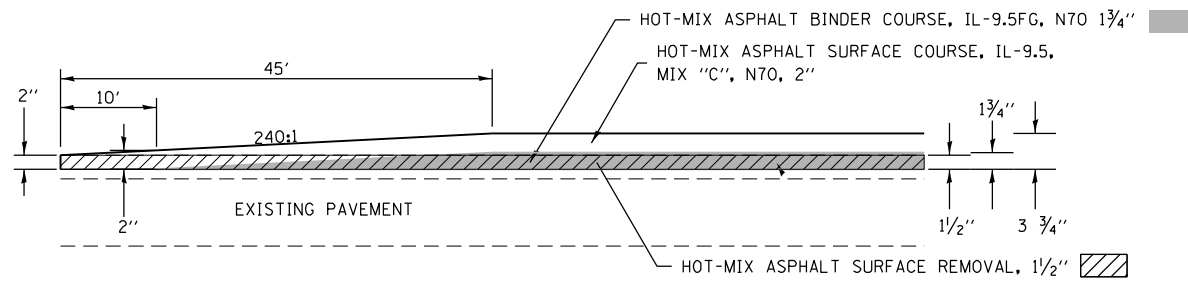
USER NAME = Mona.Steffen	DESIGNED -	REVISED -
	DRAWN -	REVISED -
PLOT SCALE = 100,0000' / in.	CHECKED -	REVISED -
PLOT DATE = 12/15/2023	DATE -	REVISED -

**STATE OF ILLINOIS
DEPARTMENT OF TRANSPORTATION**

**RURAL ENTRANCE AND MAILBOX TURNOUT DETAILS
SHOULDERS (PROPOSED)**

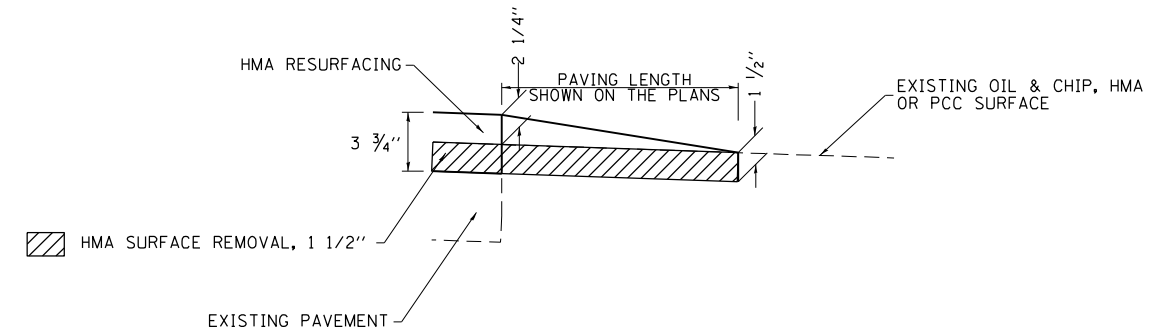
SCALE: SHEET OF SHEETS STA. TO STA.

* FAU 7643, FAS 1668, FAS 1667A, FAS 1667, OR 5					
F.A. RTE.	SECTION	COUNTY	TOTAL SHEETS	SHEET NO.	
*	10R5-2	COLES	25	6	
			CONTRACT NO. 74903		
ILLINOIS FED. AID PROJECT					

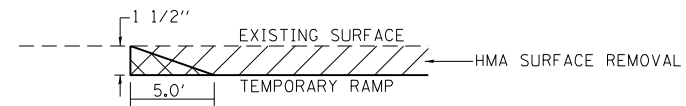


HMA BUTT JOINT

MILE MARKER 0.00 BEGINNING OF PROJECT
 MILE MARKER 7.19 END OF PROJECT
 MILE MARKER 0.00A BEGINNING OF LEG A
 STRUCTURE 015-0027
 STRUCTURE 015-0028



INTERSECTION MILLING & PAVING DETAIL



TEMPORARY RAMP

MILE MARKER 0.00 BEGINNING OF PROJECT
 MILE MARKER 7.19 END OF PROJECT
 MILE MARKER 0.00A BEGINNING OF LEG A
 STRUCTURE 015-0027
 STRUCTURE 015-0028

FAU 7643, FAS 1668, FAS 1667A, FAS 1667, OR 5

FILE NAME =	USER NAME = Mono.Steffen	DESIGNED -	REVISED - -
p:\idot-pw.bentley.com\PWIDOT\Documents\IDOT Offices\District 7\Projects\74903\CADD\Drawings\Drawings\74903-sht-details.dgn		CHECKED -	REVISED -
		DATE -	REVISED -

**STATE OF ILLINOIS
 DEPARTMENT OF TRANSPORTATION**

**HMA BUTT JOINT DETAILS, TEMPORARY RAMP
 INTERSECTION MILLING AND PAVING DETAILS**

SCALE: SHEET NO. 4 OF 4 SHEETS STA. TO STA.

F.A. RTE.	SECTION	COUNTY	TOTAL SHEETS	SHEET NO.
*	IORS-2	COLES	25	7
CONTRACT NO. 74903				
ILLINOIS FED. AID PROJECT				

CLASS D PATCHES						
ROUTE	LOCATION	PATCH		TY II	TY III	TY IV
	MILE MARKER	#				
O.R. 5	0.10	1	EB			116.7
FAS 1668	1.40	2	SB			40.0
FAS 1668	1.43	3	SB			40.0
FAS 1668	1.59	4	SB			40.0
FAS 1668	1.73	5	SB			66.7
FAS 1668	1.73	6	NB			30.0
FAS 1668	2.26	7	NB	10.7		
FAS 1668	2.34	8	NB			33.3
FAS 1668	2.71	9	SB		16.7	
FAS 1668	3.50	10	NB			66.7
FAS 1668	3.73	11	NB	10.0		
FAS 1668	4.88	12	NB	8.0		
FAS 1668	4.88	13	SB	8.0		
FAS 1668	5.16	14	NB	8.0		
FAS 1668	5.16	15	SB	8.0		
FAS 1668	5.17	16	NB	13.3		
FAS 1668	5.22	17	NB		18.7	
FAS 1668	5.22	18	SB		18.7	
FAS 1668	6.88	19	SB	5.3		
FAS 1668	6.88	20	NB	5.3		
FAS 1668	7.14	21	SB	5.1		
FAS 1668	7.14	22	NB	5.1		
FAS 1668	7.16	23	NB	8.0		
FAS 1668	7.16	24	NB	5.3		
FAS 1668	7.17	25	NB	12.0		
FAU 7643	7.18	26	NB	5.3		
FAS 1667	0.91	27	EB	5.3		
FAS 1667	0.95	28	EB	5.3		
FAS 1667	1.13	29	WB			40.0
FAS 1667	1.27	30	WB			40.0
FAS 1667	1.32	31	WB			50.0
FAS 1667	1.32	32	EB		24.0	
TOTAL				128.2	78.0	563.3

CLASS C PATCHES						
ROUTE	LOCATION	PATCH		TY II	TY III	TY IV
		#				
FAS 1667	AT RUMBLE STRIP	1	EB			30.6
FAS 1668	AT RUMBLE STRIP	2	EB			30.6
FAS 1667	AT RUMBLE STRIP	3	EB			30.6
TOTAL				0.0	0.0	91.7

PSM's TO PROTECT OR RESET						PROPOSED RESET
POINT NO.	NORTHING	EASTING	STATION	OFFSET	DESCRIPTION	
1001	990737.41	1011369.86	387+98.5	0.0'	PT - FND PK NAIL	TYPE I - FLUSH
1002	1001400.63	1020084.20	1122+22	0.0'	PT - FND IP BURIED 3+ INCH	TYPE I - FLUSH

RESURFACING SCHEDULE													
	STATION	TO	STATION	LENGTH	HOT-MIX ASPHALT SURFACE REMOVAL, 1 1/2"	BITUMINOUS MATERIALS (TACK COAT)	HOT-MIX ASPHALT BINDER COURSE	HOT-MIX ASPHALT SURFACE COURSE	AGGREGATE WEDGE SHOULDERS, TYPE B	TEMPORARY RAMP	HOT-MIX ASPHALT SHOULDERS, 4 1/2"	EXCAVATING AND GRADING EXISTING SHOULDER	LONGITUDINAL JOINT SEALANT
					SQ YD	POUND	TONS	TONS	TON	SQ YD	SQ YD	UNIT	FT
CURVE 1	0.000		0.470	2482	6067	4095	595	680	583	13	0	0	2482
	0.470		0.594	655	1820	1081	178	204	9		219	7	655
	0.594		1.079	2561	6260	4226	613	701	67		0	0	2561
CURVE 2	1.079		2.520	7608	19444	13125	1906	2178	199		0	0	7608
	2.520		2.760	1267	3642	2186	357	408	17		403	13	1267
CURVE 3	2.760		3.020	1373	3509	2369	344	393	36		0	0	1373
	3.020		3.320	1584	4886	2733	479	547	21		838	16	1584
STRUCTURE 015-0028	3.320		3.439	628	1606	1084	157	180	16		0	0	628
	3.439		3.458	100	0	0	0	0	0	26	0	0	100
HILL HMA	3.458		3.472	74	189	128	19	21	0		0	0	74
	3.472		3.480	42	123	73	12	14	1		15	0	42
	3.480		3.528	253	1071	666	105	120	3		85	0	253
	3.528		3.566	201	714	437	70	80	3		67	0	201
	3.566		3.600	180	519	310	51	58	2		60	0	180
CURVE 4	3.600		4.750	6072	15518	10475	1521	1738	159		0	0	6072
	4.750		4.980	1154	3479	1992	341	390	15		528	12	1154
	4.980		5.120	739	1890	1276	185	212	19		0	0	739
CURVE 5	5.120		5.700	3002	8884	5180	871	995	39		1211	30	3002
	5.700		6.380	3590	9176	6194	899	1028	94		0	0	3590
HILL HMA	6.380		6.430	264	675	456	66	76	3		88	3	264
	6.430		6.640	1109	2834	1913	278	317	29		0	0	1109
RURAL/URBAN	6.640		6.645	26	68	46	7	8	1		0	0	26
STRUCTURE 015-0027	6.645		6.683	200	0	0	0	0	0	26	0	0	200
	6.683		7.170	2574	6578	4441	645	737	67	13	0	0	2574
	0.000	A	1.900	10032	24523	16553	2403	2747	262	13	0	0	10032
	1.900	A	1.990	475	8545	641	837	957	0		159	5	475
	1.900	B	1.990	475	9838	738	964	1102	0		159	5	475
TOTAL				48722	141859	82418	13902	15888	1643	91	3833	89	48722

RUMBLE STRIPS		
LENGTH	WIDTH	SQ YD
FT	FT	
25.00	11.00	30.56
25.00	11.00	30.56
25.00	11.00	30.56
	Total	92.0

TRAFFIC CONTROL SCHEDULE			
	TRAFFIC CONTROL AND PROTECTION, STANDARD 701201	TRAFFIC CONTROL AND PROTECTION, STANDARD 701306	CHANGEABLE MESSAGE SIGN
	LUMP SUM	LUMP SUM	CAL DA
LINCOLN HIGHWAY	1	1	42
TOTALS	1	1	42

* FAU 7643, FAS 1668, FAS 1667A, FAS 1667, OR.5

MODEL: Default
FILE NAME: p:\project-aw-bee\paw.com\p\INDOT\Documents\DOT Office\Director_7\Project\74903\CADD\Drawings\CAD\sheet\074903-PSM-Schedule.dgn

USER NAME = Mona.Steffen	DESIGNED -	REVISED -
PLOT SCALE = 100,0000' / In.	DRAWN -	REVISED -
PLOT DATE = 12/15/2023	CHECKED -	REVISED -
	DATE -	REVISED -

STATE OF ILLINOIS
DEPARTMENT OF TRANSPORTATION

PATCHING AND RESURFACING SCHEDULES & PSM SCHEDULE			
SCALE:	SHEET	OF SHEETS	STA. TO STA.

F.A. RTE.	SECTION	COUNTY	TOTAL SHEETS	SHEET NO.
*	10RS-2	COLES	25	8
CONTRACT NO. 74903				
ILLINOIS FED. AID PROJECT				

PAVEMENT MARKING SCHEDULE

STATION TO	STATION	SHORT TERM PAVEMENT MARKING FOOT	SHORT TERM PAVEMENT MARKING REMOVAL SQ FT	TEMPORARY PAVEMENT MARKING - LINE 4" - PAINT FOOT	THERMOPLASTIC PAVEMENT MARKING - LINE 24" FOOT	GROOVING FOR RECESSED PAVEMENT MARKING 25" FOOT	THERMOPLASTIC PAVEMENT MARKING - LINE 6" FOOT	GROOVING FOR RECESSED PAVEMENT MARKING 7" FOOT	THERMOPLASTIC PAVEMENT MARKING - LINE 8" FOOT	GROOVING FOR RECESSED PAVEMENT MARKING 9" FOOT	THERMOPLASTIC PAVEMENT MARKING - LINE 12" FOOT	GROOVING FOR RECESSED PAVEMENT MARKING 13" FOOT	PAINT PAVEMENT MARKING - LINE 4" FOOT	THERMOPLASTIC PAVEMENT MARKING - LETTERS AND SYMBOLS SQ FT	GROOVING FOR RECESSED PAVEMENT MARKING, LETTERS AND SYMBOLS SQ FT	RAISED REFLECTIVE PAVEMENT MARKER EACH	RAISED REFLECTIVE PAVEMENT MARKER REMOVAL EACH
0.000	0.320	1690	141	3802	0.0	0	0	0	0	0	0	0	3802	0	0	21	16
0.320	0.492	908	76	2952	0.0	0	0	0	0	0	0	0	2952	0	0	11	9
0.492	0.755	1389	116	5555	0.0	0	0	0	0	0	0	0	5555	0	0	17	13
0.755	0.896	744	62	2420	0.0	0	0	0	0	0	0	0	2420	0	0	9	7
0.896	0.955	312	26	1246	0.0	0	0	0	0	0	0	0	1246	0	0	4	3
0.955	1.060	554	46	1802	0.0	0	0	0	0	0	0	0	1802	0	0	7	5
1.060	1.185	660	55	2640	0.0	0	0	0	0	0	0	0	2640	0	0	8	6
1.185	2.873	8913	743	20053	0.0	0	0	0	0	0	0	0	20053	0	0	111	84
2.873	3.061	993	83	3226	0.0	0	0	0	0	0	0	0	3226	0	0	12	9
3.061	3.194	702	59	2809	0.0	0	0	0	0	0	0	0	2809	0	0	9	7
3.194	3.351	829	69	2694	0.0	0	0	0	0	0	0	0	2694	0	0	10	8
3.351	3.424	385	32	1542	0.0	0	0	0	0	0	0	0	1542	0	0	5	4
3.424	3.464	211	18	686	11.5	12	211	211	0	0	0	0	686	47	47	8	6
3.464	3.629	871	73	1992	0.0	0	0	0	0	0	0	0	1992	0	0	11	8
3.629	3.632	16	1	48	0.0	0	0	0	0	0	0	0	48	0	0	0	0
3.632	3.846	1130	94	2542	0.0	0	0	0	0	0	0	0	2542	0	0	14	11
3.846	5.913	10914	909	35470	0.0	0	0	0	0	0	0	0	35470	0	0	136	102
5.913	6.123	1109	92	2664	0.0	0	0	0	0	0	0	0	2664	0	0	14	10
6.123	6.139	84	7	253	0.0	0	0	0	0	0	0	0	253	0	0	1	1
6.139	6.300	850	71	3613	0.0	0	0	0	0	0	0	0	3613	0	0	11	8
6.300	6.323	121	10	364	0.0	0	0	0	0	0	0	0	364	0	0	2	1
6.323	6.470	776	65	3113	0.0	0	0	0	0	0	0	0	3113	0	0	10	7
6.470	6.517	248	21	1926	0.0	0	0	0	0	0	0	0	1926	0	0	3	2
6.517	6.640	649	54	2829	0.0	0	0	0	0	0	0	0	2829	0	0	8	6
6.640	6.683	227	19	1880	0.0	0	0	0	0	0	0	0	1880	0	0	3	2
6.683	6.724	216	18	550	0.0	0	0	0	0	0	0	0	550	0	0	3	2
6.724	6.907	966	81	3140	0.0	0	0	0	0	0	0	0	3140	0	0	12	9
6.907	7.089	961	80	3844	0.0	0	0	0	0	0	0	0	3844	0	0	12	9
7.089	7.095	32	3	103	0.0	0	0	0	0	0	0	0	103	0	0	0	0
7.095	7.170	396	33	1287	0.0	0	0	0	0	0	0	0	1287	0	0	5	4
FAS 1667	0.000	0	0	0	0.0	0	0	0	0	0	0	0	0	0	0	0	0
0.000	0.263	1389	116	4513	0.0	0	0	0	0	0	0	0	4513	0	0	17	13
0.263	0.672	2160	180	4859	0.0	0	0	0	0	0	0	0	4859	0	0	27	20
0.672	0.715	227	19	738	0.0	0	0	0	0	0	0	0	738	0	0	3	2
0.715	0.863	781	65	1563	0.0	0	0	0	0	0	0	0	1563	0	0	10	7
0.863	0.895	169	14	549	0.0	0	0	0	0	0	0	0	549	0	0	2	2
0.895	1.007	591	49	676	0.0	0	0	0	0	0	0	0	676	0	0	7	6
1.007	1.129	644	54	2082	0.0	0	0	0	0	0	0	0	2082	0	0	8	6
1.129	1.323	1024	85	2832	0.0	0	0	0	0	0	0	0	2832	0	0	13	10
1.323	1.900	3047	254	4090	0.0	0	0	0	0	0	0	0	4090	0	0	38	29
1.900	1.990	475	40	2999	11.5	12	0	0	206	206	105	105	5167	0	0	6	4
1.900	1.990	475	40	2999	11.0	11	0	0	83	83	31	31	5167	0	0	6	4
TOTAL		48840	4070	144944	34	34	211	211	290	290	136	136	149280	47	47	616	462

* FAU 7643, FAS 1668, FAS 1667A, FAS 1667, OR.5

MODEL: Default
FILE: Mainfile.pxl
PROJECT: pav_benefits.com\FW\DOT\Documents\DOT_Offices\Director_7\Projects\74903\CADD\Drawings\CAD\sheet\0774903-PT-sched.dgn

USER NAME = Mona.Steffen	DESIGNED -	REVISED -
	DRAWN -	REVISED -
PLOT SCALE = 100,0000' / in.	CHECKED -	REVISED -
PLOT DATE = 12/15/2023	DATE -	REVISED -

STATE OF ILLINOIS
DEPARTMENT OF TRANSPORTATION

PAVEMENT MARKING SCHEDULE

SCALE: SHEET OF SHEETS STA. TO STA.

F.A. RTE.	SECTION	COUNTY	TOTAL SHEETS	SHEET NO.
*	10R5-2	COLES	25	9
CONTRACT NO. 74903				
ILLINOIS FED. AID PROJECT				

ENTRANCES & SIDE ROADS SCHEDULE

LT/RT	STATION	TYPE	DESC	MATERIAL	WIDTH @ EOP (FEET)	DEPTH (FEET)	WIDTH @ BACK (FEET)	AREA (SQ YD)	AGGREGATE SURFACE COURSE, TYPE B (TON)	INCIDENTAL HOT-MIX ASPHALT SURFACING (SPECIAL) (TON)	SURFACE REMOVAL, VARIABLE DEPTH (SPECIAL) (SQ YD)	TEMPORARY RAMP SPECIAL (SQ YD)
LT	5.460	MBT		HMA	40	10	15	30.6	-	3.9	30.6	8.9
RT	5.570	PRA	WHISPERING OAK DRIVE	HMA	61	10	27	48.4	-	6.1	48.4	13.5
LT	5.590	PE		HMA	37	10	13	27.6	-	3.5	27.6	8.2
LT	5.600	MBT		HMA	32	10	9	22.6	-	2.9	22.6	7.1
LT	5.610	PE		HMA	41	10	20	33.8	-	4.3	33.9	9.2
LT	5.690	MBT		HMA	30	10	9	21.7	-	2.8	21.7	6.8
LT	5.700	PRA	CO RD 1450 E	HMA	58	10	16	40.9	-	5.2	41.0	12.9
RT	5.700	PE		HMA	45	10	13	32.4	-	4.1	32.4	10.0
RT	5.740	PE		HMA	27	10	8	19.4	-	2.5	19.4	6.0
LT	5.750	MBT		HMA	29	10	8	20.8	-	2.7	20.8	6.6
LT	5.780	MBT		HMA	43	10	16	32.5	-	4.1	32.5	9.5
RT	5.800	PE		HMA	45	10	11	31.1	-	4.0	31.2	10.1
RT	5.880	PE		HMA	16	10	8	13.4	-	1.7	13.4	3.6
LT	5.890	MBT		HMA	47	10	23	38.9	-	5.0	39.0	10.5
LT	5.900	PE		HMA	28	10	16	24.7	-	3.2	24.7	6.3
RT	5.930	PE		HMA	29	10	15	24.4	-	3.1	24.4	6.5
LT	5.950	MBT		HMA	43	10	16	32.8	-	4.2	32.8	9.6
RT	5.950	PE		AGG	42	10	16	32.1	4	-	-	-
RT	6.010	PE		HMA	45	10	15	33.3	-	4.2	33.4	10.0
LT	6.020	PE		HMA	45	10	16	33.9	-	4.3	33.9	10.0
LT	6.040	PE		HMA	45	10	16	33.9	-	4.3	33.9	10.0
RT	6.070	PRA	540 N	HMA	60	10	30	50.0	-	6.3	50.0	13.4
RT	6.110	CE		HMA	50	10	25	41.7	-	5.3	41.7	11.2
RT	6.240	PE		AGG	40	10	16	31.1	4	-	-	-
LT	6.320	MBT		HMA	40	10	15	30.6	-	3.9	30.6	8.9
LT	6.330	PE		HMA	39	10	8	26.1	-	3.3	26.2	8.6
LT	6.400	MBT		HMA	41	10	16	31.4	-	4.0	31.4	9.2
LT	6.410	PE		HMA	31	10	7	21.4	-	2.8	21.5	7.0
RT	6.470	PE		HMA	34	10	13	25.7	-	3.3	25.7	7.5
LT	6.490	MBT		HMA	28	10	14	23.4	-	3.0	23.5	6.2
LT	6.500	PE		HMA	28	10	11	21.7	-	2.8	21.7	6.2
LT	6.550	PE		HMA	34	10	20	30.1	-	3.8	30.1	7.6
LT	6.550	MBT		HMA	54	10	20	41.1	-	5.2	41.1	12.1
RT	6.550	PE		HMA	56	10	21	42.6	-	5.4	42.7	12.5
LT	6.640	PRA	CO RD 600 N	HMA	55	10	31	47.6	-	6.0	47.6	12.2
RT	6.720	PRA	600 N SUNNY DALE DRIVE	HMA	66	10	26	51.3	-	6.5	51.3	14.7
RT	6.900	FE		AGG	40	10	8	26.8	3	-	-	-
RT	7.100	PE		HMA	26	10	16	23.4	-	3.0	23.4	5.8
LT	0.280	FE		AGG	40	10	12	28.9	4	-	-	-
RT	0.280	FE		AGG	40	10	12	28.9	4	-	-	-
RT	0.450	PE		HMA	47	10	27	40.9	-	5.2	41.0	10.4
LT	0.450	MBT		HMA	52	10	27	43.6	-	5.5	43.7	11.5
LT	0.580	CE	THOMAS LINCOLN CEMETARY	HMA	54	10	17	39.1	-	5.0	39.2	12.0
LT	0.600	CE	SHILOH PRESBYTERIAN CHURCH	HMA	54	10	17	38.9	-	5.0	39.0	11.9
RT	0.680	FE		HMA	54	10	36	50.2	-	6.4	50.2	12.1
LT	0.690	FE		HMA	97	10	49	81.2	-	10.3	81.2	21.7
RT	0.720	PE		HMA	46	10	33	43.8	-	5.6	43.8	10.3
LT	0.730	PRA	CR 1300 E	HMA	62	10	35	53.7	-	6.8	53.7	13.7
RT	0.980	PRA	CR 1320 E	HMA	35	10	14	27.3	-	3.5	27.3	7.8
RT	1.010	PE		HMA	80	10	25	58.6	-	7.4	58.7	17.9
RT	1.020	PE		HMA	56	10	19	41.8	-	5.3	41.8	12.5
LT	1.140	PE		HMA	33	10	17	27.5	-	3.5	27.5	7.4
RT	1.140	MBT		HMA	31	10	13	24.2	-	3.1	24.2	6.8
RT	1.280	FE		AGG	30	10	15	25.0	3	-	-	-
LT	1.640	FE		AGG	30	10	15	25.0	3	-	-	-
TOTALS									69	650	5140	1481

PAVED SHOULDER REMOVAL SCHEDULE

LT/RT	STATION	TYPE	MATERIAL	LENGTH "L" (FT)	WIDTH @ SHOULDER (FT)	WIDTH @ "L" (FT)	AREA (SQ YD)
LT	3.04	MBT	HMA	34.2	8.4	10	23.7
LT	3.05	PE	HMA	24	19.2	10	24.0
LT	3.11	MBT	HMA	36	25	10	33.9
LT	3.11	PE	HMA	35	25	10	33.3
LT	3.14	MBT	HMA	56.7	17.7	10	41.3
LT	3.27	MBT	HMA	27.3	10.8	10	21.2
LT	3.28	PE	HMA	36	21.2	10	31.8
LT	4.91	MBT	HMA	40	15	10	30.6
LT	4.95	MBT	HMA	40	10	10	27.8
LT	4.98	MBT	HMA	48.4	22	10	39.1
RT	5.14	PE	HMA	35.6	19.6	10	30.7
RT	5.25	PE	HMA	42.7	16.8	10	33.1
RT	5.46	PE	HMA	47.3	23	10	39.1
RT	5.7	PE	HMA	45	13.3	10	32.4
TOTAL							441.8

* FAU 7643, FAS 1668, FAS 1667A, FAS 1667, OR.5

Model: Default
 File: \\mifp01\pub\ldict-pw-benefits.com\PIV\DOT\Documents\DOT Office\Director: 2\Projects\74903\CADD\Bids\CAD\Sheet\074903-rt-sched.tbl.dgn

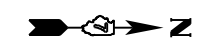
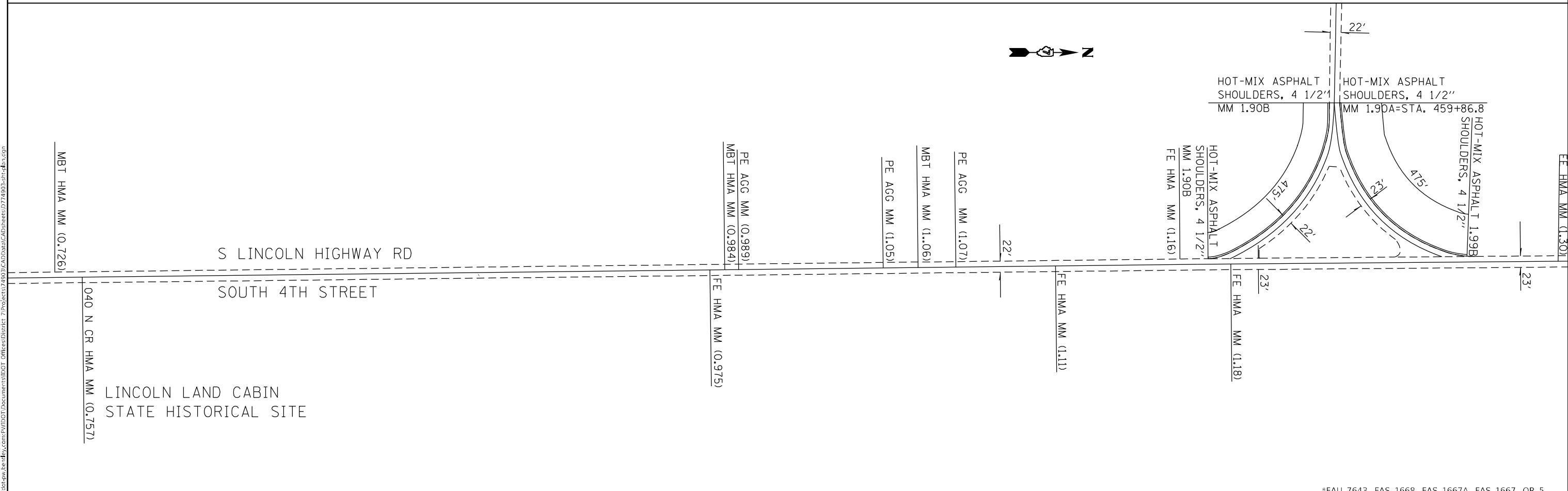
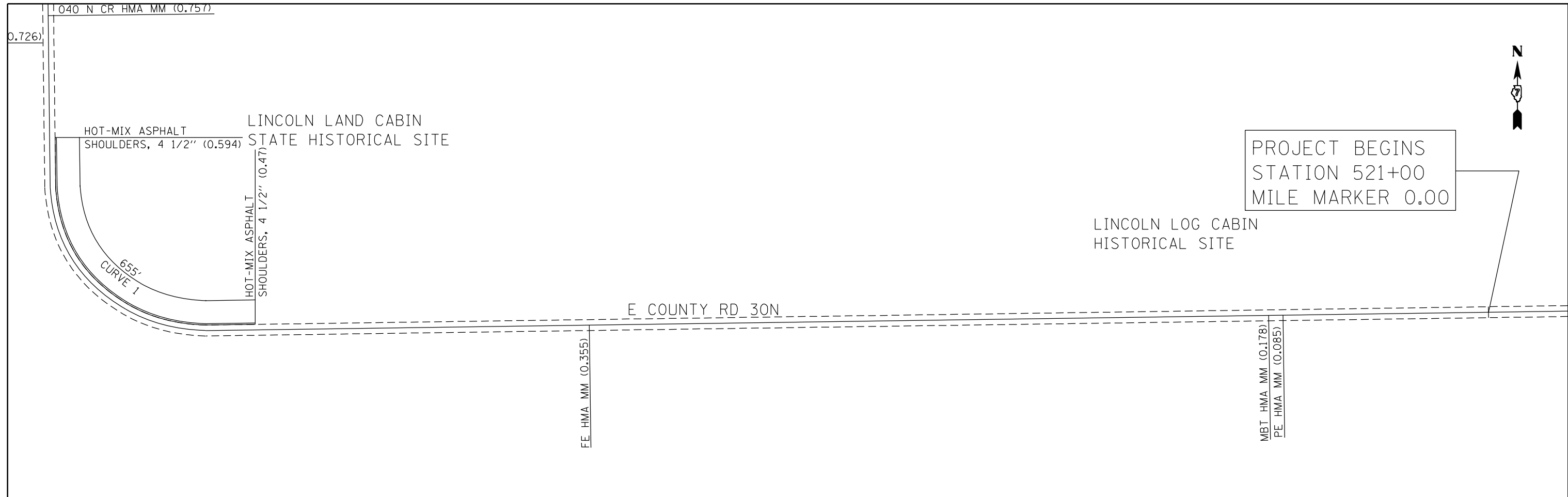
USER NAME = Mona.Steffen	DESIGNED -	REVISED -
	DRAWN -	REVISED -
PLOT SCALE = 100,0000 ' / in.	CHECKED -	REVISED -
PLOT DATE = 12/15/2023	DATE -	REVISED -

STATE OF ILLINOIS
 DEPARTMENT OF TRANSPORTATION

ENTRANCE SCHEDULE

SCALE: SHEET OF SHEETS STA. TO STA.

F.A. RTE.	SECTION	COUNTY	TOTAL SHEETS	SHEET NO.
*	10R5-2	COLES	25	11
CONTRACT NO. 74903				
ILLINOIS FED. AID PROJECT				



MODEL: Default
 FILE: hmafe_pavuldet-pav_bentley.com/PW/IDOT/Document/1/IDOT_Offices/Dir/Dir_7/Projects/74903/CADD/Drawings/74903-11-1.dwg

*FAU 7643, FAS 1668, FAS 1667A, FAS 1667, OR 5

USER NAME = Mona.Steffen	DESIGNED -	REVISED -
PLOT SCALE = 200,0000' / in.	DRAWN -	REVISED -
PLOT DATE = 12/15/2023	CHECKED -	REVISED -
	DATE -	REVISED -

**STATE OF ILLINOIS
DEPARTMENT OF TRANSPORTATION**

OR 5 FAS ROUTE 1668			
SCALE:	SHEET	OF	SHEETS
	STA.	TO	STA.

F.A. RTE.	SECTION	COUNTY	TOTAL SHEETS	SHEET NO.
*	10R5-2	COLES	25	12
CONTRACT NO. 74903				
ILLINOIS FED. AID PROJECT				

E CR 150N HMA MM (1.87)

E CR 150N HMA MM (1.87)

MOORE HOUSE
HISTORICAL SITE

CE HMA MM (1.82)

PE HMA MM (1.78)
MBT HMA MM (1.77)

PE HMA MM (1.76)
MBT HMA MM (1.75)
PE HMA MM (1.74)

MBT HMA MM (1.70)

MBT HMA MM (1.65)
PE HMA MM (1.65)

PE HMA MM (1.63)
PE HMA MM (1.62)

PE AGG MM (1.61)

S LINCOLN HIGHWAY RD

SOUTH 4TH STREET

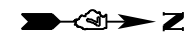
PE HMA MM (1.36)

MBT HMA MM (1.35)

CR 100N HMA
MM (1.36)

EE HMA MM (1.30)

23'



S LINCOLN HIGHWAY RD

SOUTH 4TH STREET

FE AGG MM (2.03)

FE AGG MM (2.36)

FE AGG MM (2.12)

E CR 150N HMA MM (1.87)

E CR 150N HMA MM (1.87)

*FAU 7643, FAS 1668, FAS 1667A, FAS 1667, OR 5

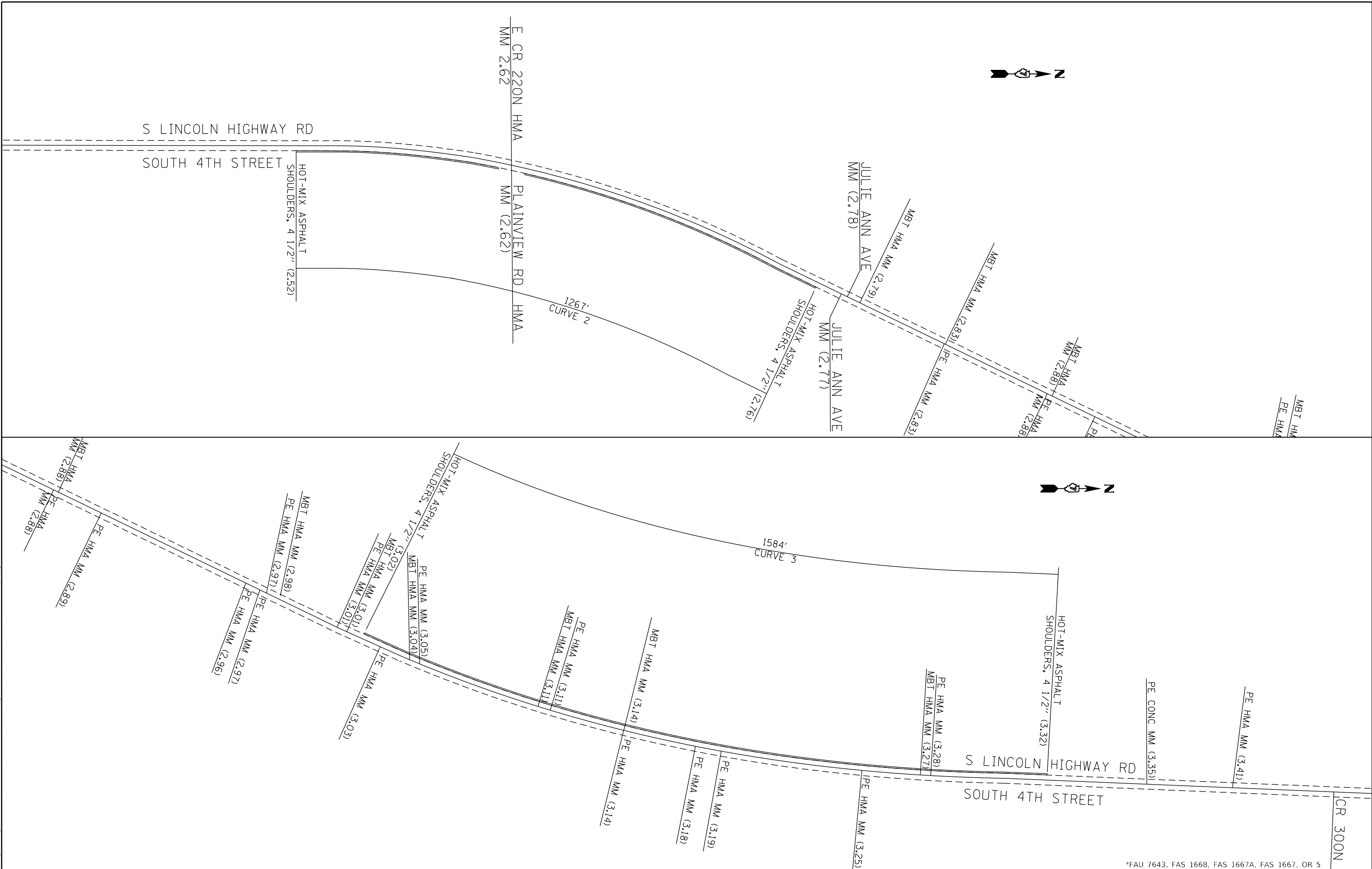
USER NAME = Mona.Steffen	DESIGNED -	REVISED -
	DRAWN -	REVISED -
PLOT SCALE = 200,0000' / in.	CHECKED -	REVISED -
PLOT DATE = 12/15/2023	DATE -	REVISED -

STATE OF ILLINOIS
DEPARTMENT OF TRANSPORTATION

FAS ROUTE 1668			
SCALE:	SHEET	OF	SHEETS
	STA.		TO STA.

F.A. RTE.	SECTION	COUNTY	TOTAL SHEETS	SHEET NO.
*	10R5-2	COLES	25	13
CONTRACT NO. 74903				
ILLINOIS FED. AID PROJECT				

MODEL: Default
FILE NAME: p:\ultra-cw-bee\paw.com\PIV\DOT\Documents\DOT Office\Director_7\Project\74903\CADD\sheet\0774903-sh-4b.dwg



*FAU 7643, FAS 1668, FAS 1667A, FAS 1667, OR 5

USER NAME = Mona.Steffen	DESIGNED -	REVISED -
	DRAWN -	REVISED -
PLOT SCALE = 200,0000' / in.	CHECKED -	REVISED -
PLOT DATE = 12/15/2023	DATE -	REVISED -

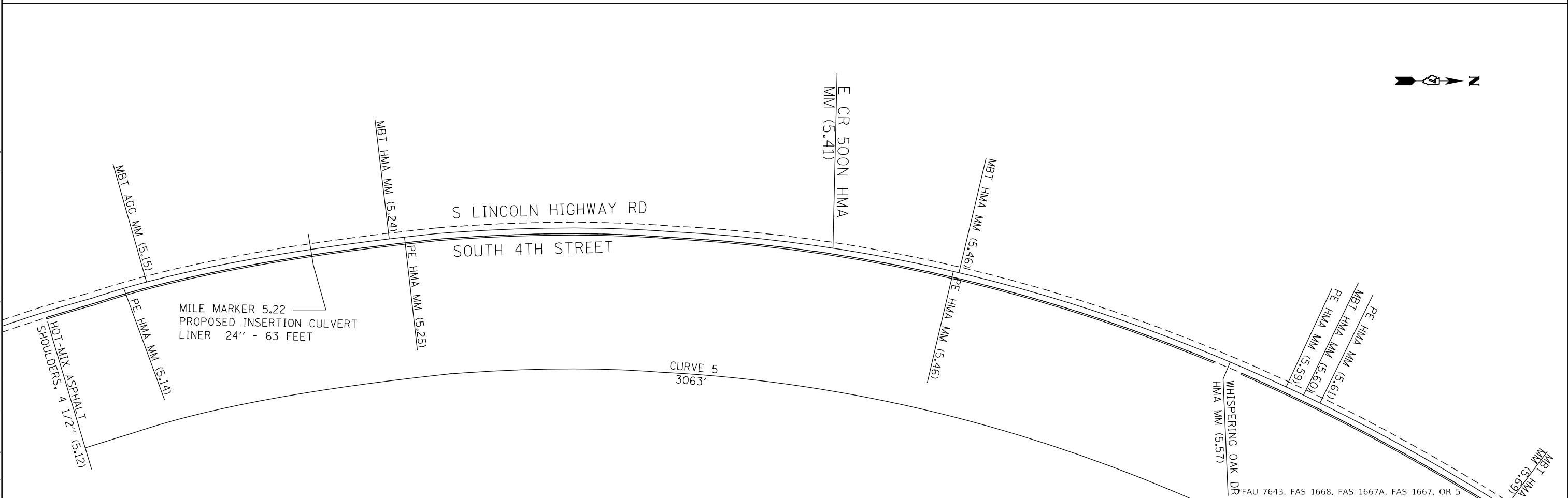
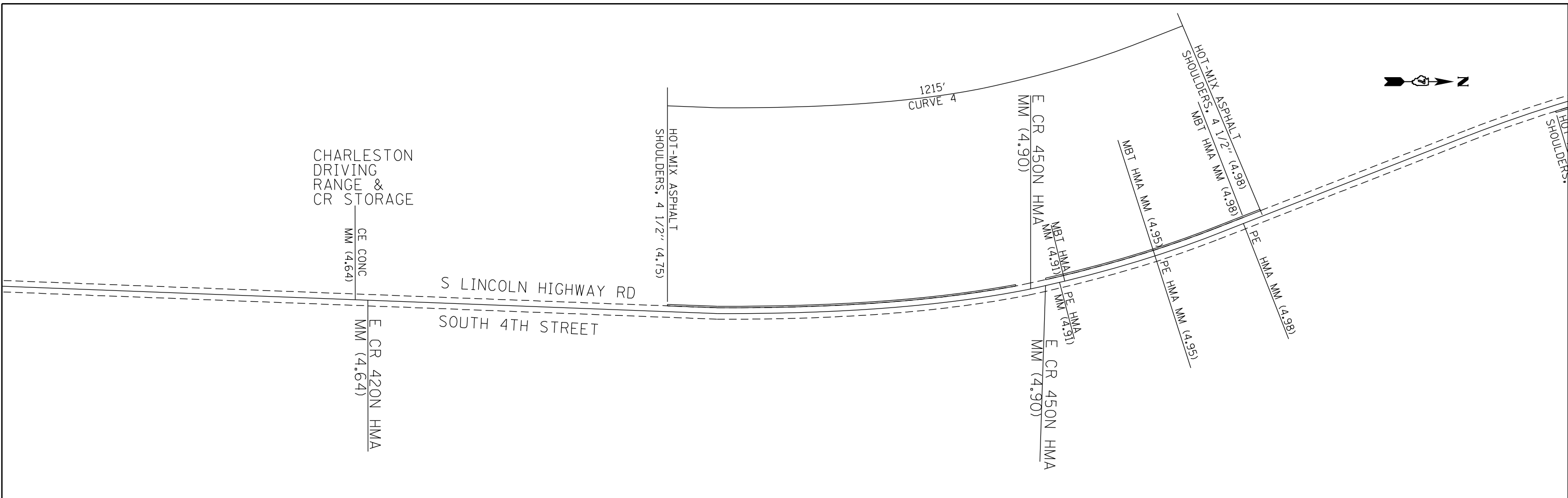
**STATE OF ILLINOIS
DEPARTMENT OF TRANSPORTATION**

FAS ROUTE 1668

SCALE: SHEET OF SHEETS STA. TO STA.

F.A. RTE.	SECTION	COUNTY	TOTAL SHEETS	SHEET NO.
*	10R5-2	COLES	25	14
CONTRACT NO. 74903				
ILLINOIS FED. AID PROJECT				

MODEL: Default
FILE: hma1668_14.dwg
PROJECT: 74903\CADD\Drawings\CADD\Drawings\74903-14.dwg



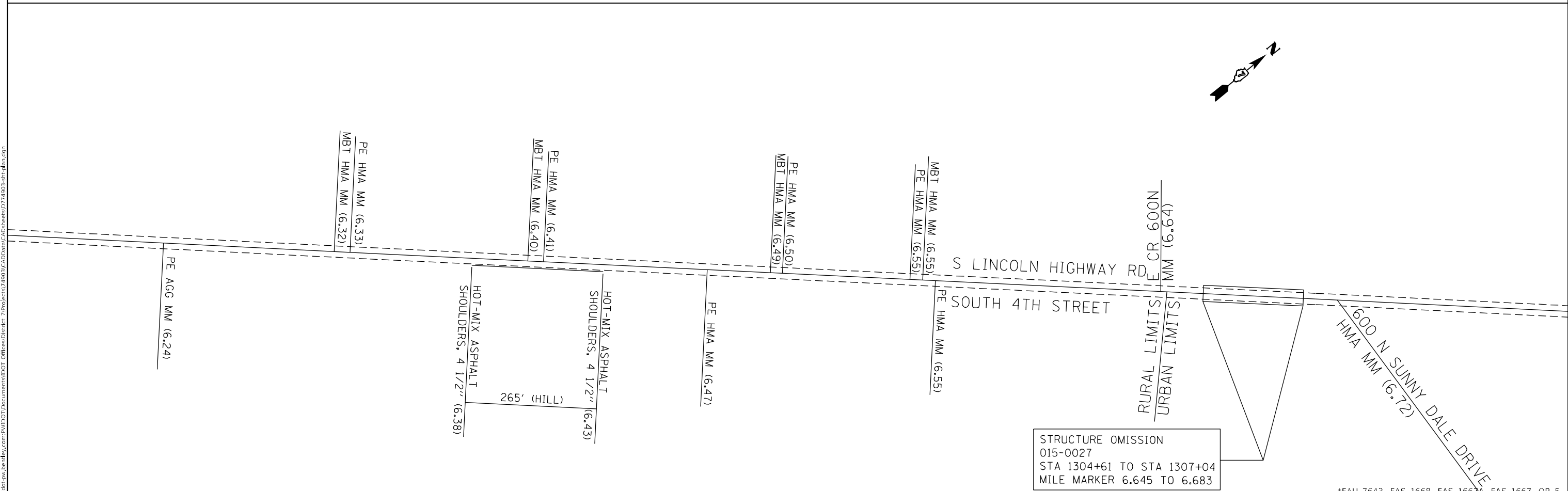
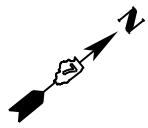
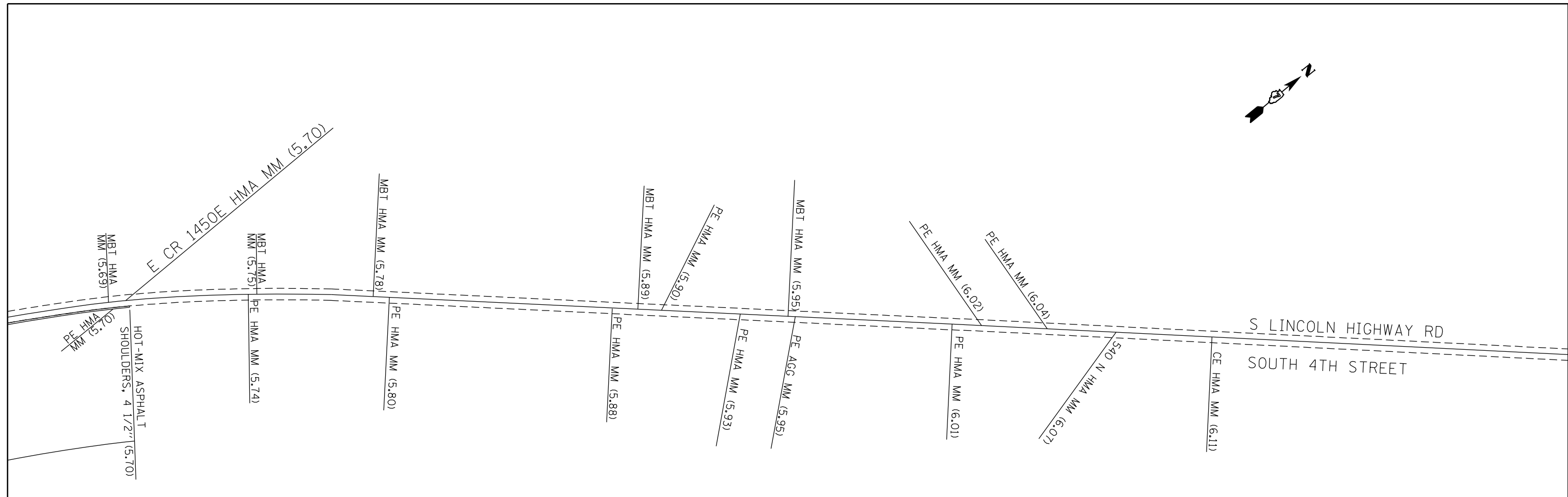
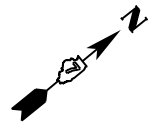
MODEL: Default
 FILE: hma16_rpt.plt
 PROJECT: 74903\CADD\Drawings\DOT\Drawings\Sheet\74903-16.dwg

USER NAME = Mona.Steffen	DESIGNED -	REVISED -
DRAWN -	REVISED -	
PLOT SCALE = 200,0000' / in.	CHECKED -	REVISED -
PLOT DATE = 12/15/2023	DATE -	REVISED -

STATE OF ILLINOIS
DEPARTMENT OF TRANSPORTATION

SCALE:		SHEET	OF	SHEETS	STA.	TO STA.	FAS ROUTE 1668		
							ILLINOIS	FED. AID PROJECT	

F.A. RTE.	SECTION	COUNTY	TOTAL SHEETS	SHEET NO.
*	10R5-2	COLES	25	16
CONTRACT NO. 74903				



*FAU 7643, FAS 1668, FAS 1667A, FAS 1667, OR 5

MODEL: Default
 FILE: hma1667a.pxd
 PROJECT: 74903\CADD\Drawings\CADD\Drawings\74903-1667a.dwg
 PLOT DATE: 12/15/2023

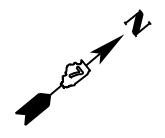
USER NAME = Mona.Steffen	DESIGNED -	REVISED -
PLOT SCALE = 200,0000' / in.	DRAWN -	REVISED -
PLOT DATE = 12/15/2023	CHECKED -	REVISED -
	DATE -	REVISED -

STATE OF ILLINOIS
DEPARTMENT OF TRANSPORTATION

FAS ROUTE 1668
FAU ROUTE 7463 BEGINS AT URBAN

SCALE: SHEET OF SHEETS STA. TO STA.

F.A. RTE.	SECTION	COUNTY	TOTAL SHEETS	SHEET NO.
*	10R5-2	COLES	25	17
CONTRACT NO. 74903				
ILLINOIS FED. AID PROJECT				



PROJECT ENDS
STATION 1332+16
MILE MARKER 7.17

600 N SUNNY DALE DRIVE
HMA MM (6.72)

FE AGG MM (6.90)

S LINCOLN HIGHWAY RD
SOUTH 4TH STREET

PE HMA MM (7.10)

CO RD 1550E

MODEL: Default
 FILE NAME: p:\u003cproject\74903\CADD\Drawings\CAD\Drawings\74903-18-23.dwg

*FAU 7643, FAS 1668, FAS 1667A, FAS 1667, OR 5

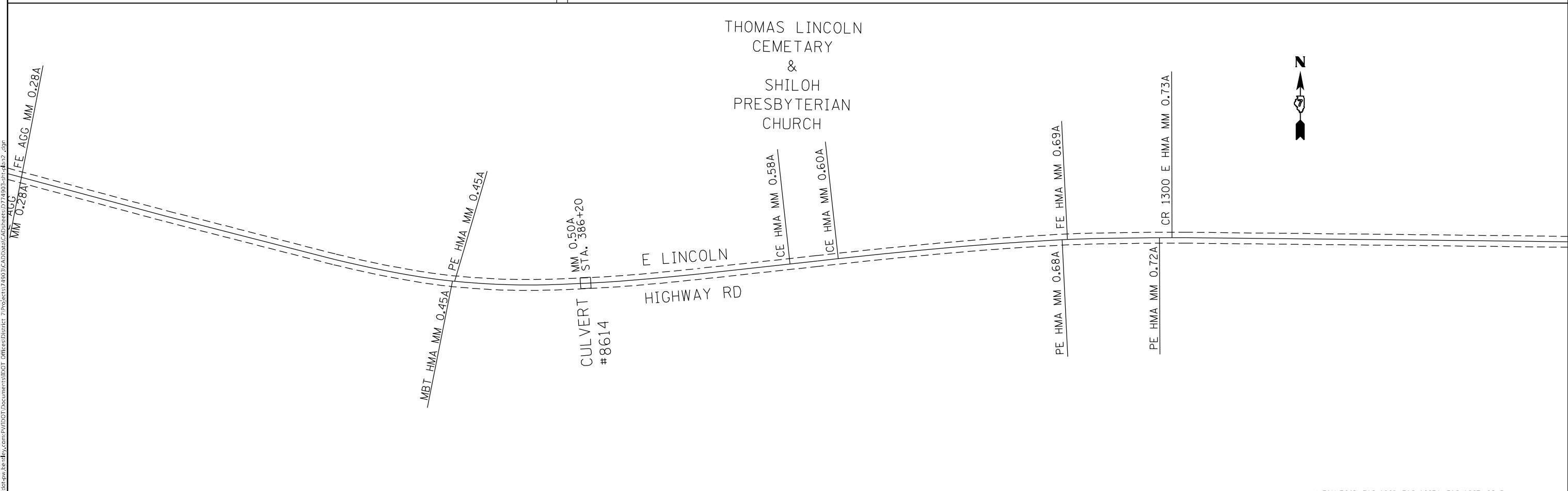
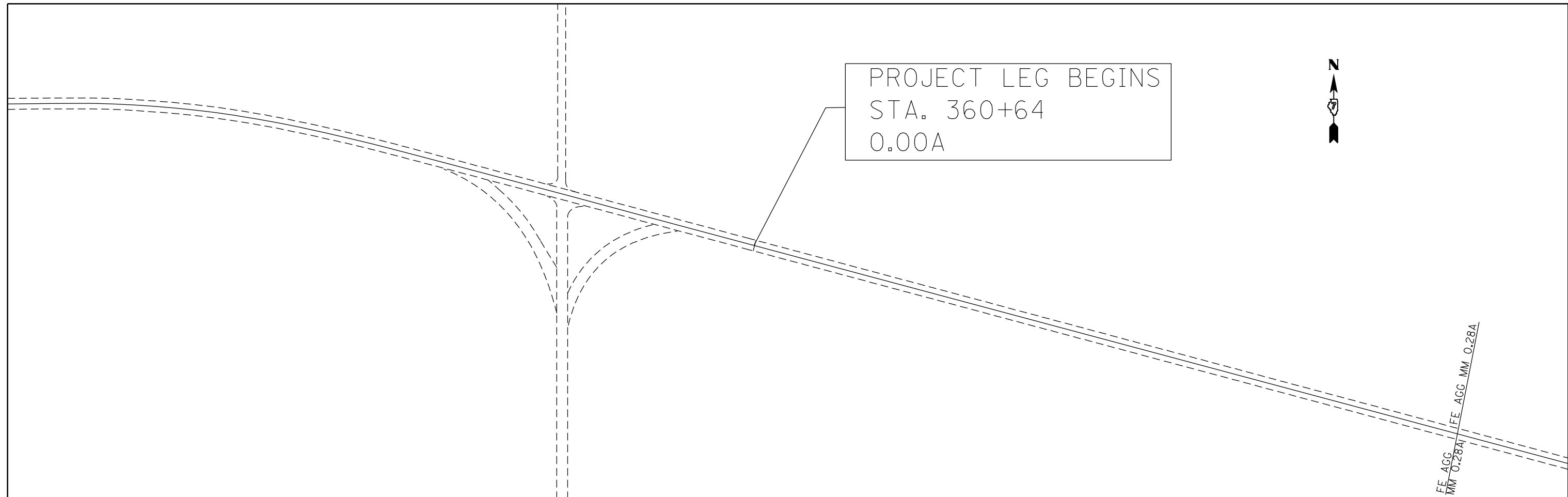
USER NAME = Mona.Steffen	DESIGNED -	REVISED -
	DRAWN -	REVISED -
PLOT SCALE = 200,0000' / in.	CHECKED -	REVISED -
PLOT DATE = 12/15/2023	DATE -	REVISED -

**STATE OF ILLINOIS
DEPARTMENT OF TRANSPORTATION**

FAU ROUTE 7463			
SCALE:	SHEET	OF	SHEETS
	STA.	TO	STA.

F.A. RTE.	SECTION	COUNTY	TOTAL SHEETS	SHEET NO.
*	10R5-2	COLES	25	18
CONTRACT NO. 74903				
ILLINOIS FED. AID PROJECT				

MODEL: Default
 FILE: M:\MFC_Plan\Subsect-plan-bead-fay.com\PIV\DOT\Documents\1\DOT Office\Director_7\Project\74903\CADD\Drawings\CAD\Sheet\074903-pts-dwg2.dwg



* FAU 7643, FAS 1668, FAS 1667A, FAS 1667, OR 5

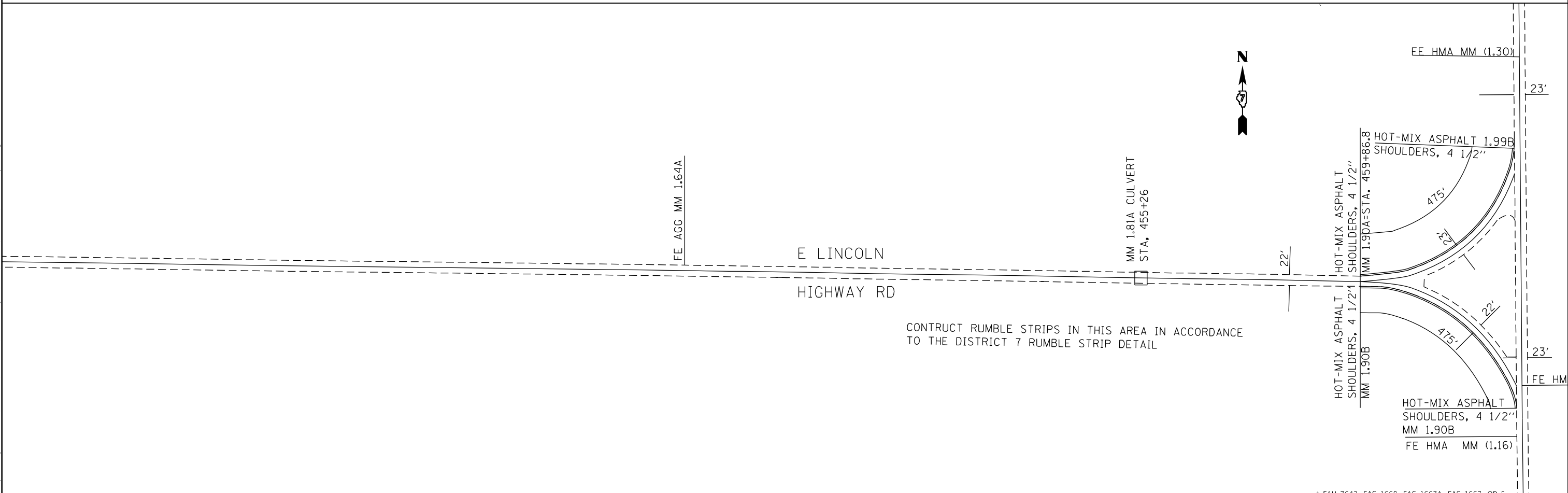
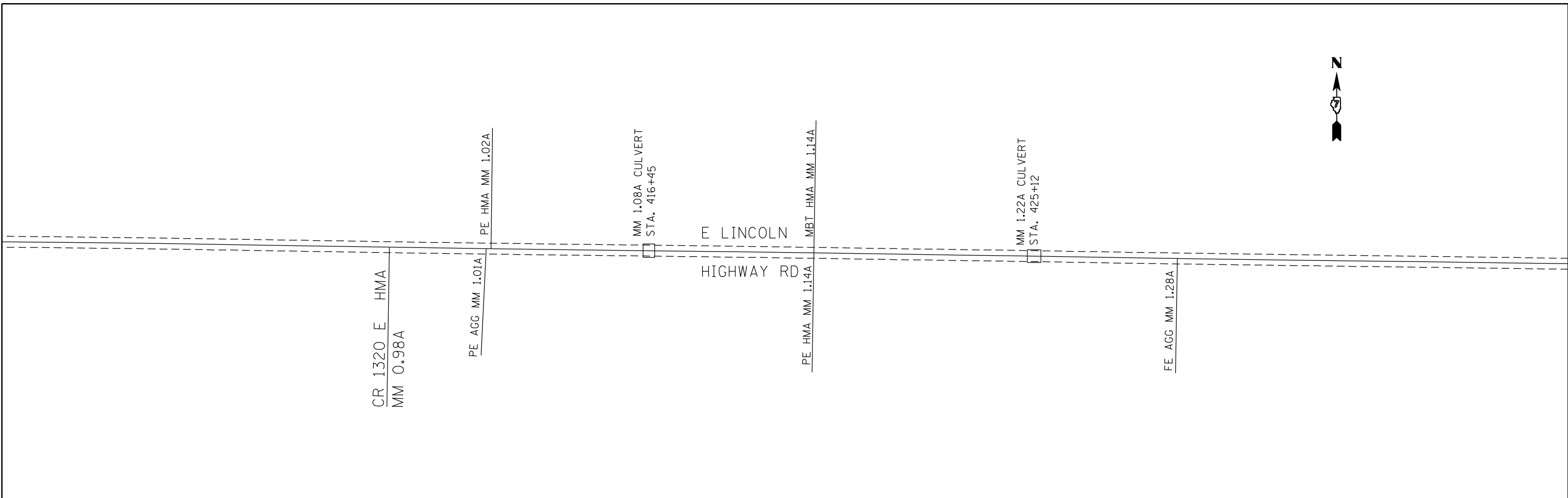
USER NAME = Mona.Steffen	DESIGNED -	REVISED -
DRAWN -	REVISED -	
PLOT SCALE = 200,0000' / in.	CHECKED -	REVISED -
PLOT DATE = 12/15/2023	DATE -	REVISED -

**STATE OF ILLINOIS
 DEPARTMENT OF TRANSPORTATION**

FAS ROUTE 1667

SCALE: SHEET OF SHEETS STA. TO STA.

F.A. RTE.	SECTION	COUNTY	TOTAL SHEETS	SHEET NO.
*	COLES	COLES	25	19
CONTRACT NO. 74903				
ILLINOIS FED. AID PROJECT				



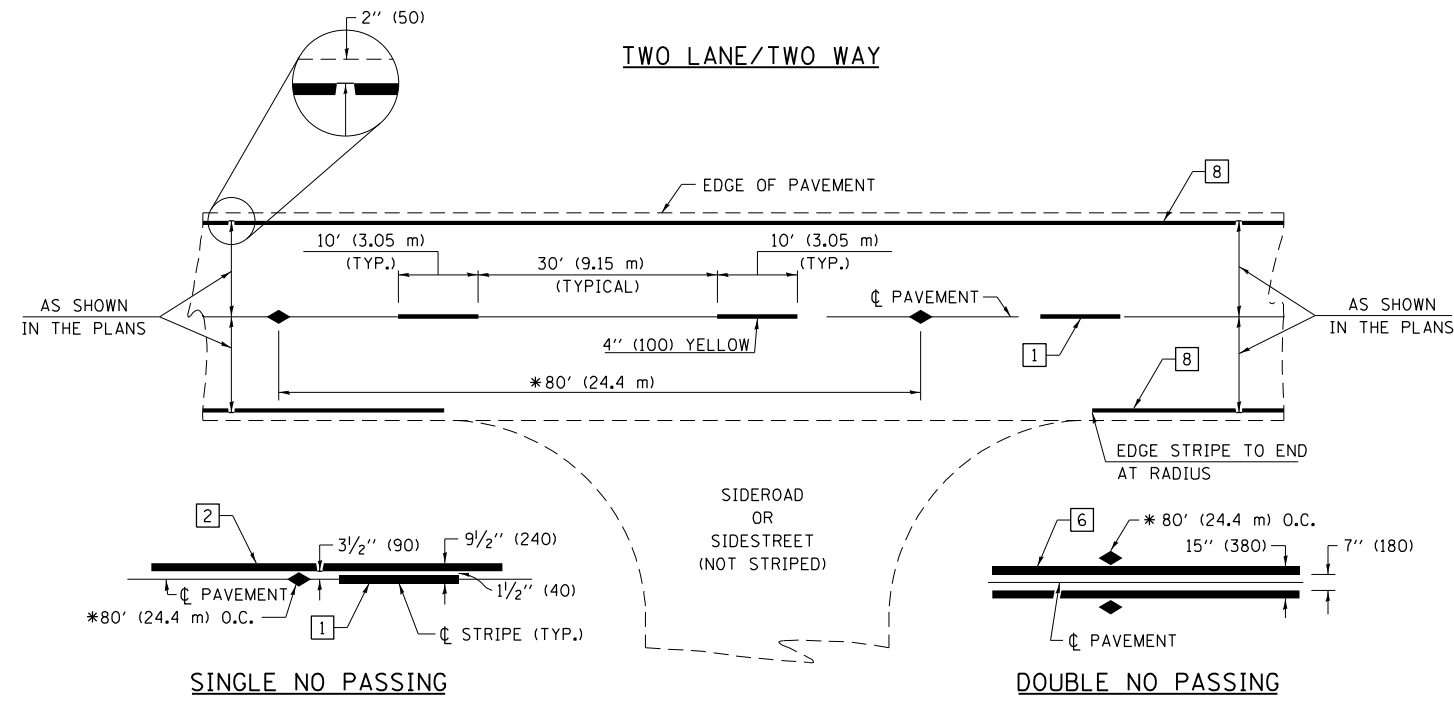
MODEL: Default
 FILE: hmafe_pav_suldet-pw-bead-fay.com\FW\DOT\Documents\DOT Office\District 7\Projects\174903\CADD\Drawings\CAD\Drawings\74903-sh-dm-v2.dwg

USER NAME = Mona.Steffen	DESIGNED -	REVISED -
	DRAWN -	REVISED -
PLOT SCALE = 200,0000' / in.	CHECKED -	REVISED -
PLOT DATE = 12/15/2023	DATE -	REVISED -

STATE OF ILLINOIS
DEPARTMENT OF TRANSPORTATION

FAS ROUTE 1667			
SCALE:	SHEET	OF	SHEETS
	STA.		TO STA.

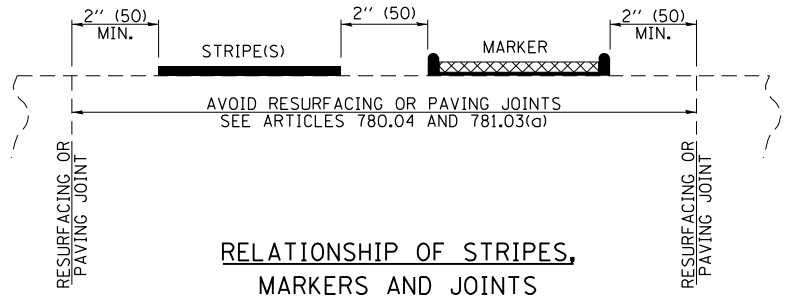
* FAU 7643, FAS 1668, FAS 1667A, FAS 1667, OR 5	TOTAL SHEETS	SHEET NO.
F.A. RTE.	SECTION	COUNTY
	10R5-2	COLES
		25
		20
CONTRACT NO. 74903		
ILLINOIS FED. AID PROJECT		



PAVEMENT MARKING LEGEND

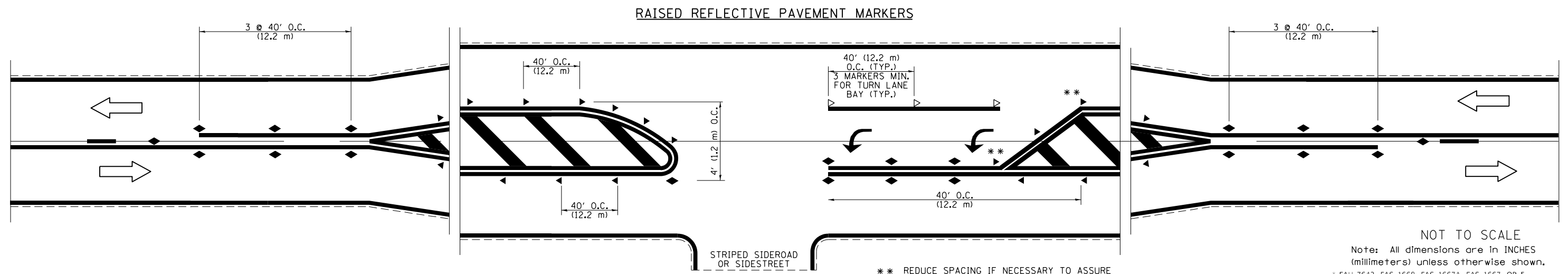
- 1 4" (100) SKIP-DASH (YELLOW)
- 2 4" (100) SOLID (YELLOW)
- 3 12" (300) DIAGONAL (YELLOW)
- 4 4" (100) DOUBLE YELLOW (NARROW)
- 5 12" (300) SOLID WHITE
- 6 4" (100) DOUBLE YELLOW (WIDE)
- 7 6" (150) SKIP-DASH (WHITE)
- 8 4" (100) SOLID (WHITE)
- 9 12" (300) DIAGONAL (WHITE)
- 10 6" (150) SOLID (WHITE)
- 11 24" (600) STOP BAR (WHITE)
- 12 8" (200) SOLID (WHITE)
- 13 4" (100) PARKING WHITE

* REDUCE TO 40' (12.2 m) O.C. ON CURVES WITH POSTED OR ADVISORY SPEEDS OF 45 mph (70 km/h) OR LESS.



TYPICAL PAVEMENT MARKERS LEGEND

- ◆ TWO-WAY AMBER MARKER
- ▶ ONE-WAY AMBER MARKER
- ▷ ONE-WAY CRYSTAL MARKER



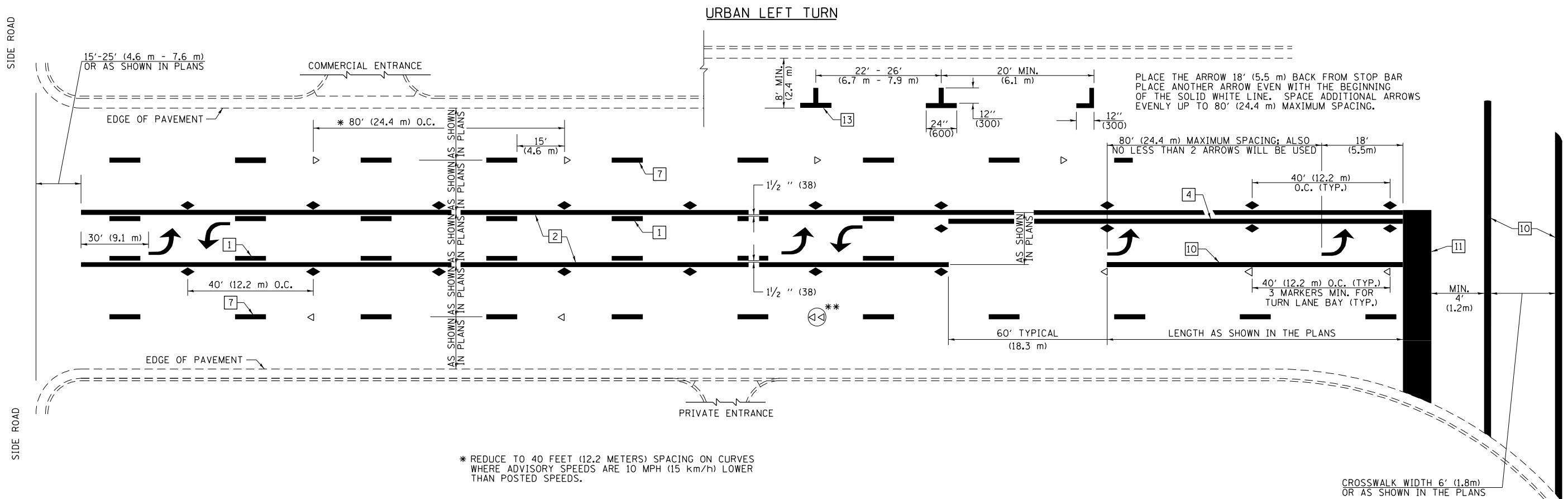
** REDUCE SPACING IF NECESSARY TO ASSURE MARKERS AT CORNER POINTS.

NOT TO SCALE
Note: All dimensions are in INCHES (millimeters) unless otherwise shown.
* FAU 7643, FAS 1668, FAS 1667A, FAS 1667, OR 5

FILE NAME =	USER NAME = Mono.Steffen	DESIGNED -	REVISED -	STATE OF ILLINOIS DEPARTMENT OF TRANSPORTATION	PAVEMENT MARKING AND RAISED REFLECTIVE PAVEMENT MARKERS (RURAL & URBAN APPLICATIONS)	SCALE:	SHEET NO. 1 OF 4 SHEETS	STA.	TO STA.	
pw:\1ldot-pw.bentley.com\PWIDOT\Documents\DOT Offices\District 7\Projects\74903\CADD\Drawings\Drawings\74903-sht-details.dgn	PLotted SCALE = 100.0000' / in.	CHECKED -	REVISED -			F.A. RTE.	SECTION	COUNTY	TOTAL SHEETS	SHEET NO.
PLotted DATE = 12/15/2023	DATE -	REVISED -	REVISED -			*	IORS-2	COLES	25	21
						CONTRACT NO. 74903				

DISTRICT 7 DETAIL NO. 7800001

ILLINOIS FED. AID PROJECT	
---------------------------	--



PLACE THE ARROW 18' (5.5 m) BACK FROM STOP BAR
 PLACE ANOTHER ARROW EVEN WITH THE BEGINNING
 OF THE SOLID WHITE LINE. SPACE ADDITIONAL ARROWS
 EVENLY UP TO 80' (24.4 m) MAXIMUM SPACING.

* REDUCE TO 40 FEET (12.2 METERS) SPACING ON CURVES
 WHERE ADVISORY SPEEDS ARE 10 MPH (15 km/h) LOWER
 THAN POSTED SPEEDS.

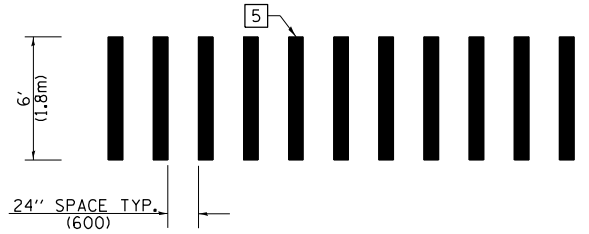
** DOUBLE LANE LINE MARKERS SHALL BE SPECIFIED
 AND SPACED AS SHOWN IN HIGHWAY STANDARD
 781001 FOR MULTI-LANE DIVIDED AND UNDIVIDED
 HIGHWAYS.

PAVEMENT MARKING LEGEND

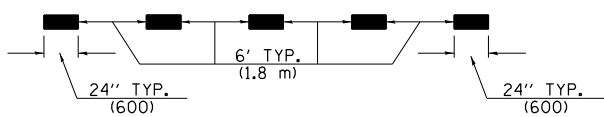
- 1 4" (100) SKIP-DASH (YELLOW)
- 2 4" (100) SOLID (YELLOW)
- 3 12" (300) DIAGONAL (YELLOW)
- 4 4" (100) DOUBLE YELLOW (NARROW)
- 5 12" (300) SOLID WHITE
- 6 4" (100) DOUBLE YELLOW (WIDE)
- 7 6" (150) SKIP-DASH (WHITE)
- 8 4" (100) SOLID (WHITE)
- 9 12" (300) DIAGONAL (WHITE)
- 10 6" (150) SOLID (WHITE)
- 11 24" (600) STOP BAR (WHITE)
- 12 8" (200) SOLID (WHITE)
- 13 4" (100) PARKING WHITE

GENERAL NOTES

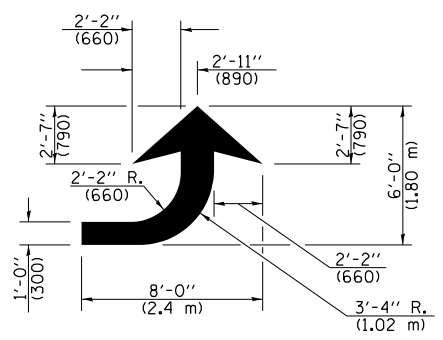
1. TURN ARROW PAIRS SHALL BE PLACED AT 250' (75 m) INTERVALS AND SHALL BE EVENLY SPACED BETWEEN BOTH ENDS OF THE BIDIRECTIONAL LEFT TURN LANE. USE A MINIMUM OF TWO PAIRS PER BLOCK.
2. THE SOLID YELLOW PAVEMENT MARKINGS [2] SHOULD GENERALLY START OR END NEAR THE RADIUS POINT OF EACH STREET RETURN EXCEPT WHERE ONE OR BOTH ENDS WOULD INCLUDE STOP BARS.
3. THE SKIP-DASH PAVEMENT MARKINGS [1] OR [7] SHOULD BE CENTERED BETWEEN BOTH ENDS OF EACH CITY BLOCK AND SHALL BE PLACED SO THEY LINE UP ACROSS FROM EACH OTHER.
4. USE LARGE ARROW SIZE FOR BOTH RURAL AND URBAN LOCATIONS. (SEE SECTION 780 FOR SYMBOLS TABLE)
5. LANE LINE EXTENSIONS SHALL BE THE SAME COLOR AND WIDTH AS THE LANE LINE BEING EXTENDED.
6. ALL WHITE SKIP-DASH LINES SHALL BE 6" IN WIDTH.



**CROSSWALK DETAIL
 (DECATUR CITY LIMITS ONLY)**

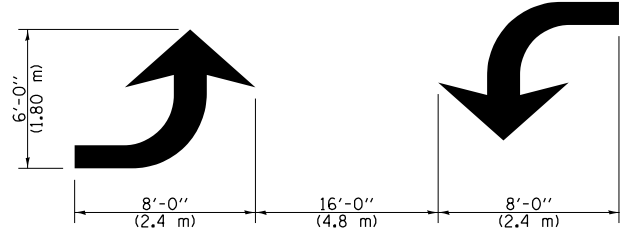


LANE LINE EXTENSIONS



LEFT ARROW

REVERSE FOR RIGHT ARROW
 AREA = 15.6 SQ. FT. (1.47 m²)
 (WHITE)



**TYPICAL DOUBLE
 TURN ARROWS (WHITE)**

NOT TO SCALE

Note: All dimensions are in INCHES
 (millimeters) unless otherwise shown.

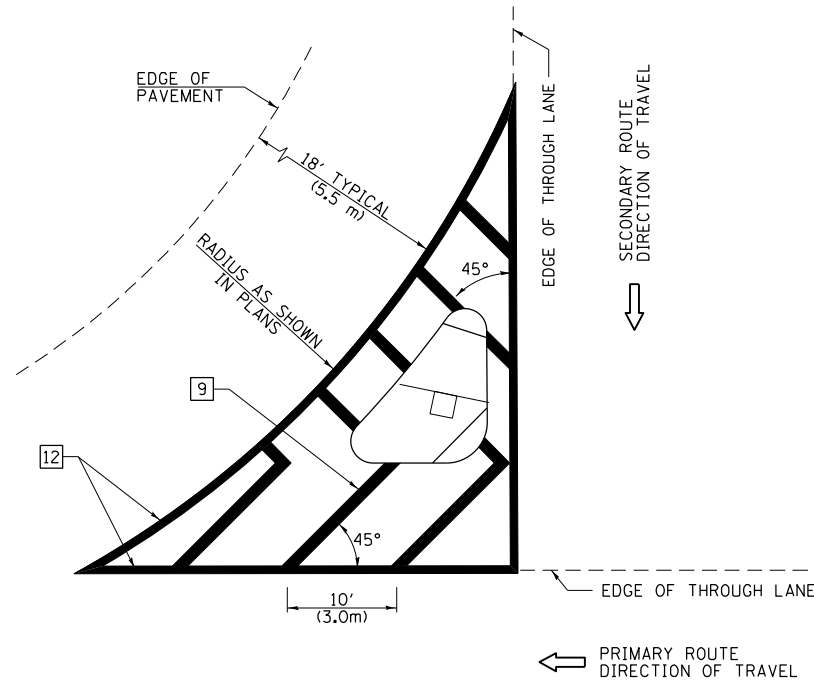
DISTRICT 7 DETAIL NO. 7800001

FILE NAME =	USER NAME = Mono.Steffen	DESIGNED -	REVISED -	STATE OF ILLINOIS DEPARTMENT OF TRANSPORTATION	PAVEMENT MARKING AND RAISED REFLECTIVE PAVEMENT MARKERS (RURAL & URBAN APPLICATIONS)	F.A. RTE.	SECTION	COUNTY	TOTAL SHEETS	SHEET NO.
pw:\idot-pw\bentley.com\PIWIDOT\Documents\IDOT Offices\District 7\Projects\74903\CADD\Drawings\74903-sht-details.dgn	DRAWN	CHECKED -	REVISED -			10RS-2	COLES	25	22	
PLOT SCALE = 100.0000' / in.	CHECKED -	REVISED -	CONTRACT NO. 74903			ILLINOIS FED. AID PROJECT				
PLOT DATE = 12/15/2023	DATE -	REVISED -	SCALE:			SHEET NO. 2 OF 4 SHEETS	STA.	TO STA.		

* FAU 7643, FAS 1668, FAS 1667A, FAS 1667, OR 5

ISLANDS

OPTION 1

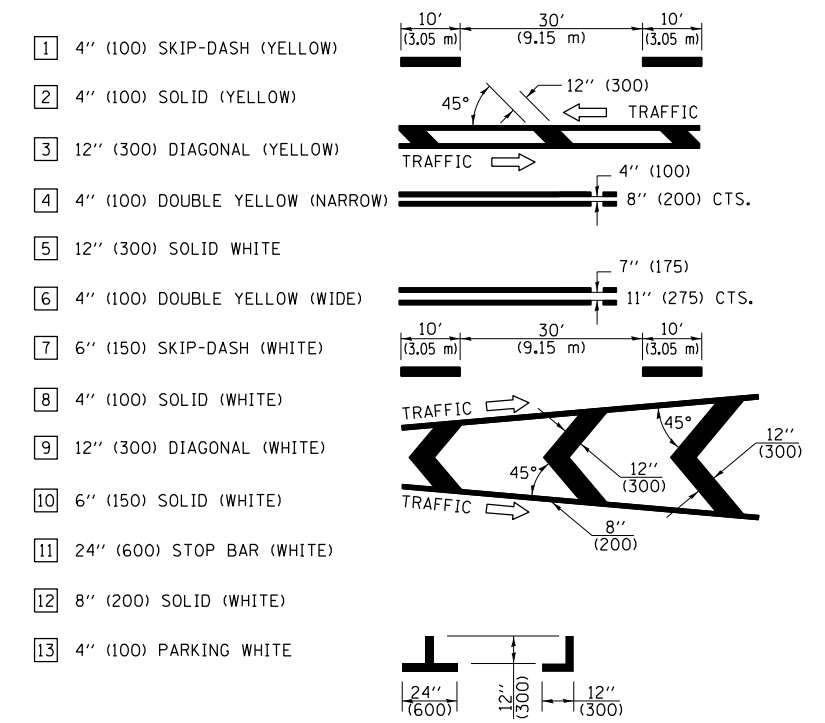


GENERAL NOTES

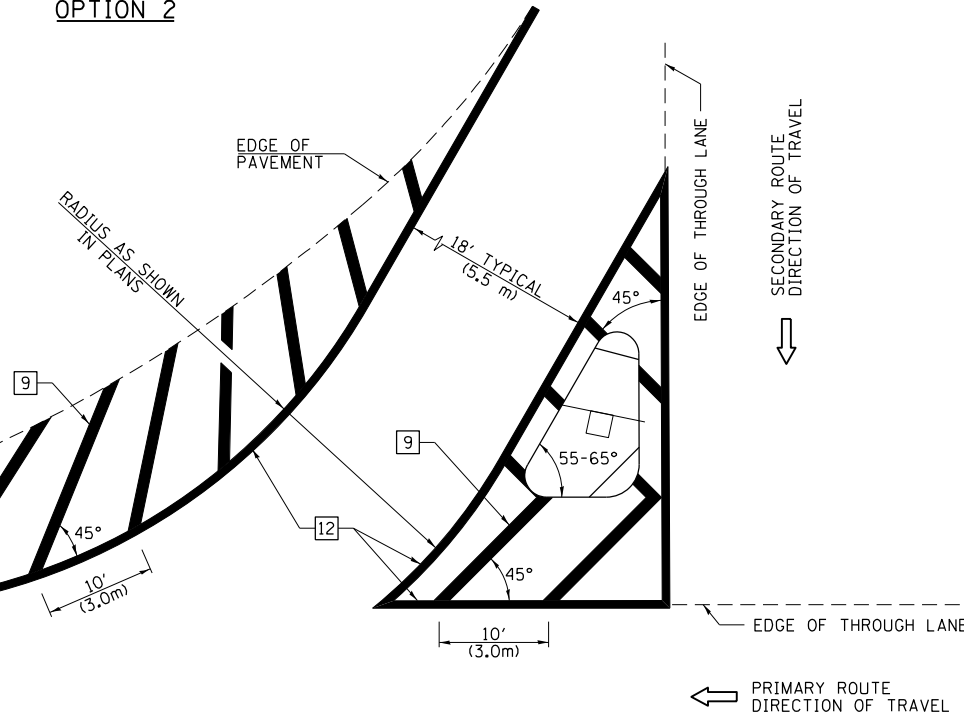
1. RAISED AND CORRUGATED MEDIANS SHALL BE OUTLINED WITH [2].
2. SOME OF THE INFORMATION INCLUDED WITH THIS DETAIL MAY NOT BE APPLICABLE TO THIS IMPROVEMENT.
3. PAVEMENT MARKINGS ARE TO BE EXTENDED THROUGH OMISSIONS WHEN APPLICABLE.
4. FINAL PAVEMENT MARKINGS SHALL BE IN PLACE PRIOR TO PLACING ANY RAISED REFLECTIVE PAVEMENT MARKERS.
5. THE FOLLOWING CRITERIA SHALL BE USED FOR SELECTING THE DIAGONAL PAVEMENT MARKING SPACING:

< 30 MPH (< 50 km/h)	15' (4.5 m)
30-45 MPH (50-75 km/h)	20' (6.0 m)
> 45 MPH (> 75 km/h)	30' (9.0 m)
6. THE USE OF ISLAND STRIPING OPTION 1 OR OPTION 2 SHALL BE AS SHOWN ON THE PLANS.

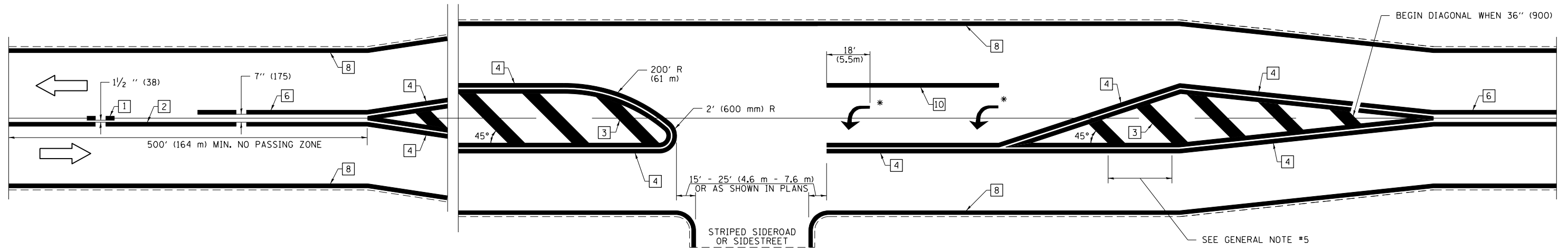
PAVEMENT MARKING LEGEND



OPTION 2



RURAL LEFT TURN STRIPING



* PLACE AN ARROW 18' (5.5 m) BACK FROM END OF THE SOLID WHITE LINE. PLACE ANOTHER ARROW EVEN WITH THE BEGINNING OF THE SOLID WHITE LINE. SPACE ADDITIONAL ARROWS EVENLY UP TO 80' (24.4 m) MAXIMUM SPACING. USE MINIMUM OF 2 ARROWS.

NOT TO SCALE

Note: All dimensions are in INCHES (millimeters) unless otherwise shown.

* FAU 7643, FAS 1668, FAS 1667A, FAS 1667, OR 5

DISTRICT 7 DETAIL NO. 7800001

FILE NAME =	USER NAME = Mono.Steffen	DESIGNED -	REVISED - -
p:\idot-pw\bentley.com\PROJECTS\DOT Documents\DOT Offices\District 7\Projects\74903\CADD\Drawings\74903-sht-details.dgn		CHECKED -	REVISED -
		DATE -	REVISED -

**STATE OF ILLINOIS
DEPARTMENT OF TRANSPORTATION**

**PAVEMENT MARKING AND RAISED REFLECTIVE PAVEMENT MARKERS
(RURAL & URBAN APPLICATIONS)**

SCALE: SHEET NO. 3 OF 4 SHEETS STA. TO STA.

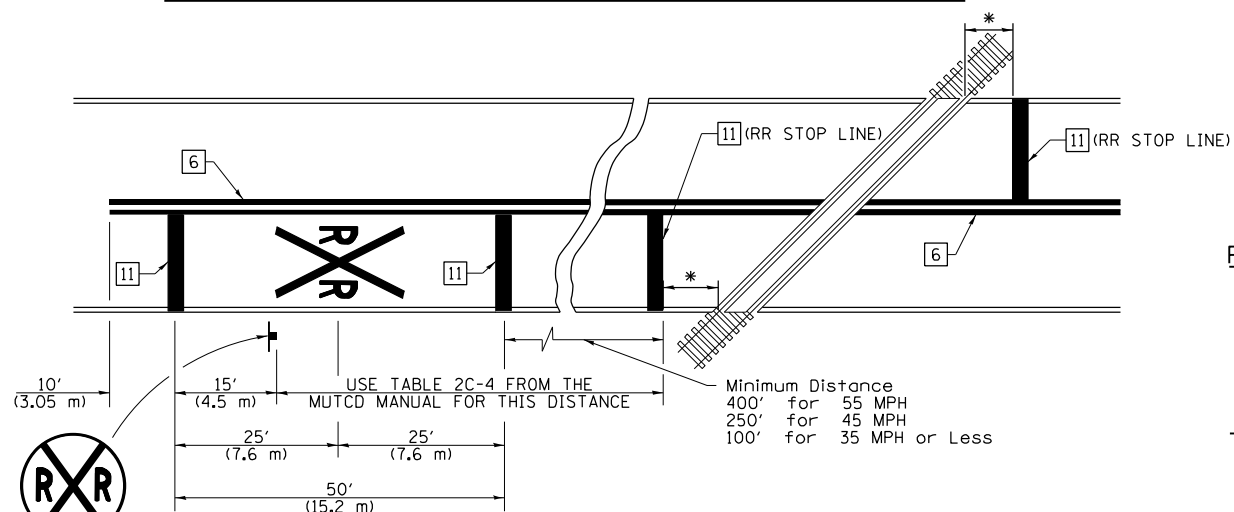
F.A. RTE.	SECTION	COUNTY	TOTAL SHEETS	SHEET NO.
*	IORS-2	COLES	25	23
CONTRACT NO. 74903				
ILLINOIS FED. AID PROJECT				

SUPPLEMENTAL PAVEMENT MARKING TREATMENT FOR RAILROAD-HIGHWAY GRADE CROSSING

PAVEMENT MARKING LEGEND

- 1 4" (100) SKIP-DASH (YELLOW)
 - 2 4" (100) SOLID (YELLOW)
 - 3 12" (300) DIAGONAL (YELLOW)
 - 4 4" (100) DOUBLE YELLOW (NARROW)
 - 5 12" (300) SOLID WHITE
 - 6 4" (100) DOUBLE YELLOW (WIDE)
 - 7 6" (150) SKIP-DASH (WHITE)
 - 8 4" (100) SOLID (WHITE)
 - 9 12" (300) DIAGONAL (WHITE)
 - 10 6" (150) SOLID (WHITE)
 - 11 24" (600) STOP BAR (WHITE)
 - 12 8" (200) SOLID (WHITE)
 - 13 4" (100) PARKING WHITE
-

PAVEMENT MARKINGS AT RAILROAD-HIGHWAY GRADE CROSSING

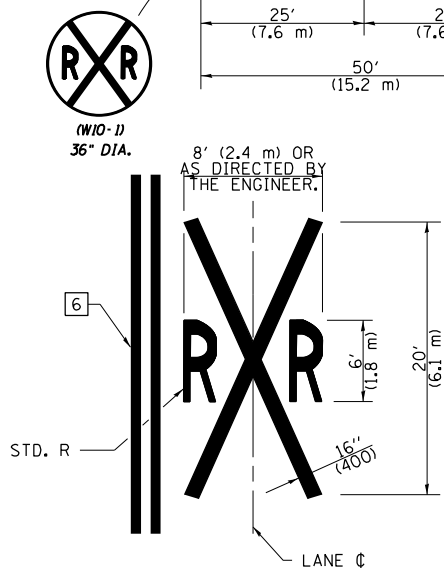


NOTES

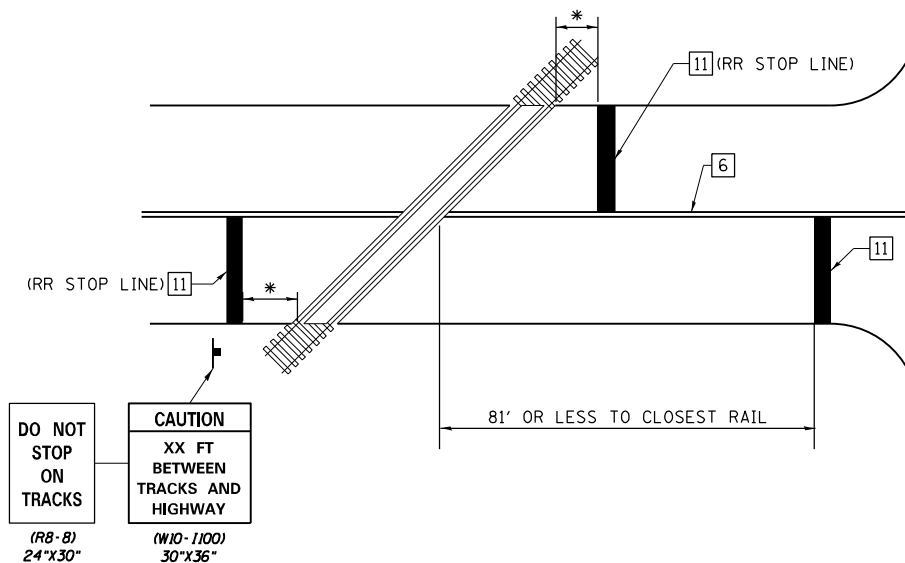
THE TRAVERSE SPREAD OF THE "X" MAY VARY ACCORDING TO LANE WIDTH.

ON MULTI-LANE ROADS, THE STOP LINES SHALL EXTEND ACROSS ALL APPROACH LANES AND SEPARATE RRR SYMBOLS SHALL BE PLACED ADJACENT TO EACH OTHER IN EACH LANE.

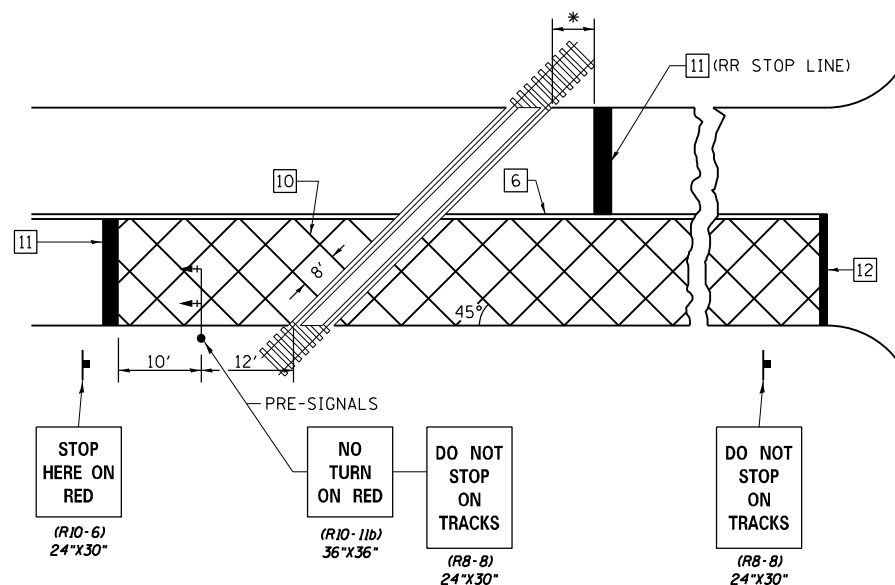
WHEN THE PAVEMENT MARKING SYMBOL IS USED, A PORTION OF THE SYMBOL SHOULD BE LOCATED DIRECTLY ADJACENT TO THE ADVANCE WARNING SIGN (W10-1) AS PLACED BY TABLE II-1, CONDITION B OF THE MUTCD.



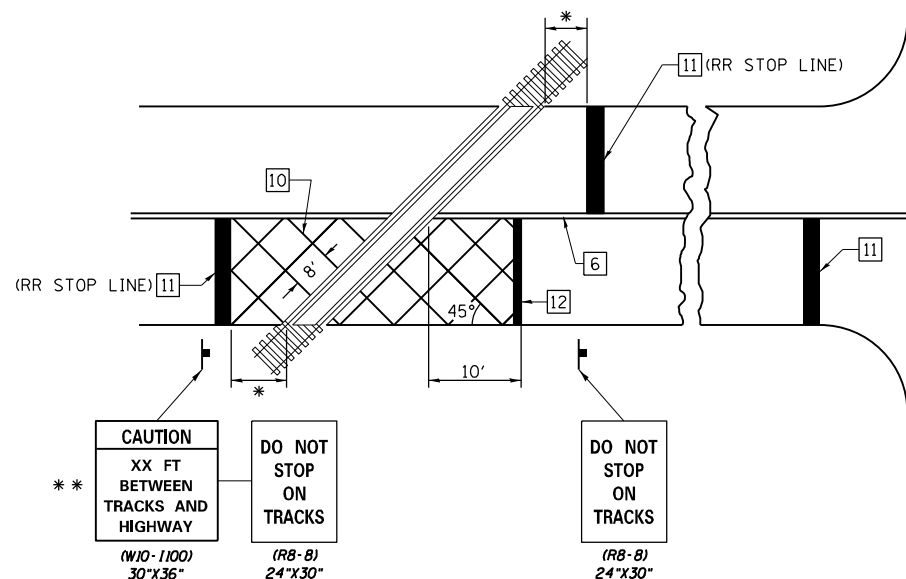
RAILROAD CROSSING WITH NON-SIGNALIZED INTERSECTION



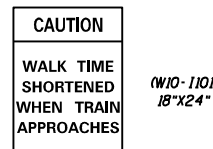
RAILROAD CROSSING WITH INTERCONNECT AND PRE-SIGNALS



RAILROAD CROSSING WITH INTERCONNECT ONLY



- ### GENERAL NOTES
- SUPPLEMENTAL PAVEMENT MARKINGS TO BE INSTALLED ONLY ON APPROACHES TO INTERSECTIONS CONTROLLED BY TRAFFIC SIGNALS WHICH ARE INTERCONNECTED WITH THE RAILROAD WARNING SIGNALS.
 - EXTEND PAVEMENT MARKINGS TO THE INTERSECTION ONLY WHERE PRE-SIGNALS ARE USED.
 - WHEN PEDESTRIAN SIGNALS ARE PRESENT WITH INTERCONNECTED SIGNALS, WARNING SIGN W10-1101 (18"X24") SHALL BE PLACED NEAR EACH PEDESTRIAN SIGNAL HEAD. COUNTDOWN PEDESTRIAN SIGNAL HEADS SHALL NOT BE UTILIZED ALONG WITH INTERCONNECTED SIGNALS.
 - PLEASE REFER TO THE IDOT BUREAU OF OPERATION MEMO OPS T-06 DATED DECEMBER 1, 2020 FOR ADDITIONAL INFORMATION



* 15' FROM NEAR RAIL OR 8' FROM AND PARALLEL TO GATE IF PRESENT

** WARNING SIGN W10-1100 SHALL BE USED AS AN INTERIM MEASURE AT INTERCONNECTED SIGNAL LOCATIONS WHERE PRE-SIGNALS ARE TO BE INSTALLED IN THE FUTURE. THIS SIGN SHALL BE REMOVED WHEN THE PRE-SIGNALS ARE INSTALLED AND THE PAVEMENT MARKINGS ARE EXTENDED TO THE INTERSECTION.

NOT TO SCALE
Note: All dimensions are in INCHES (millimeters) unless otherwise shown.

* FAU 7643, FAS 1668, FAS 1667A, FAS 1667, OR 5

DISTRICT 7 DETAIL NO. 78000001

FILE NAME =	USER NAME = Mono.Steffen	DESIGNED -	REVISED -
p:\idot-pw\bentley.com\PIDOT\Documents\IDOT Offices\District 7\Projects\74903\CADD\Drawings\74903-sht-details.dgn		REVISIONS	
PLOT SCALE = 100.0000' / in.	CHECKED -	REVISIONS	
PLOT DATE = 12/15/2023	DATE -	REVISIONS	

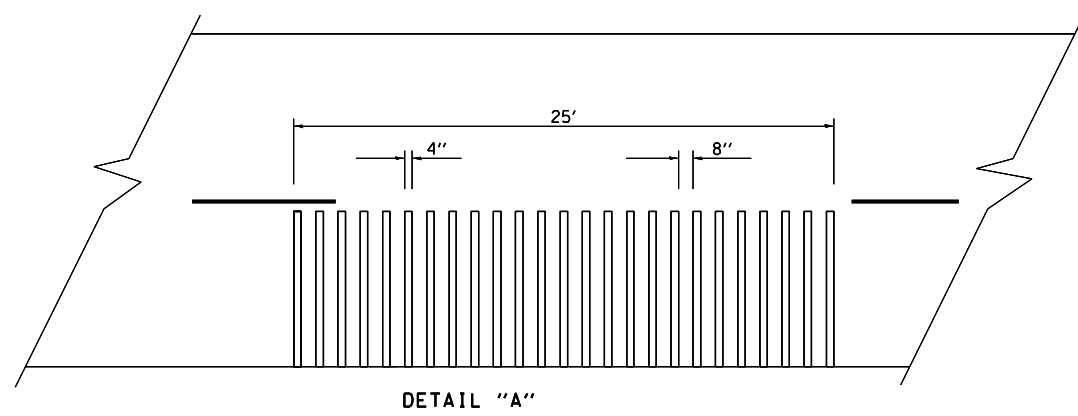
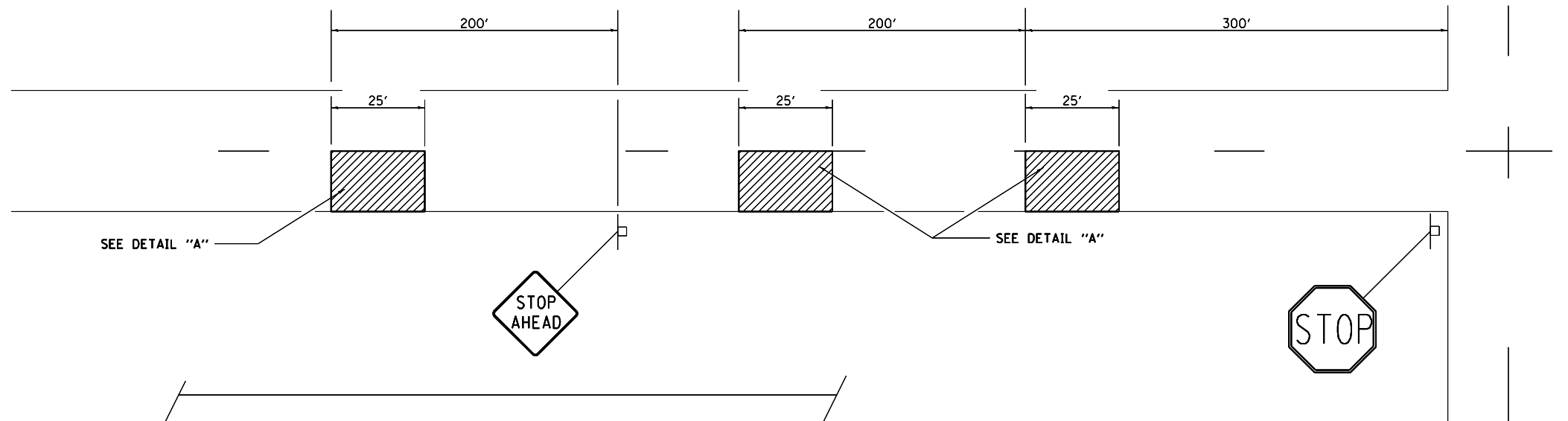
STATE OF ILLINOIS
DEPARTMENT OF TRANSPORTATION

PAVEMENT MARKING AND RAISED REFLECTIVE PAVEMENT MARKERS
(RURAL & URBAN APPLICATIONS)

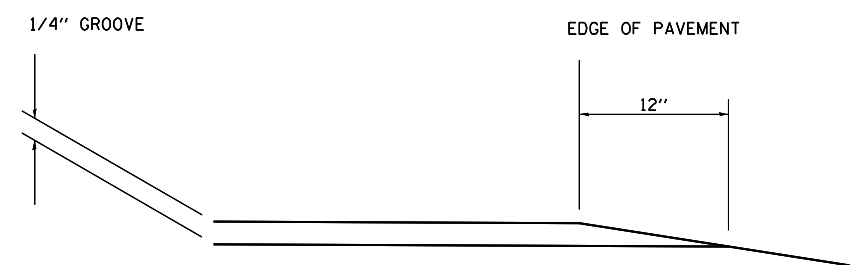
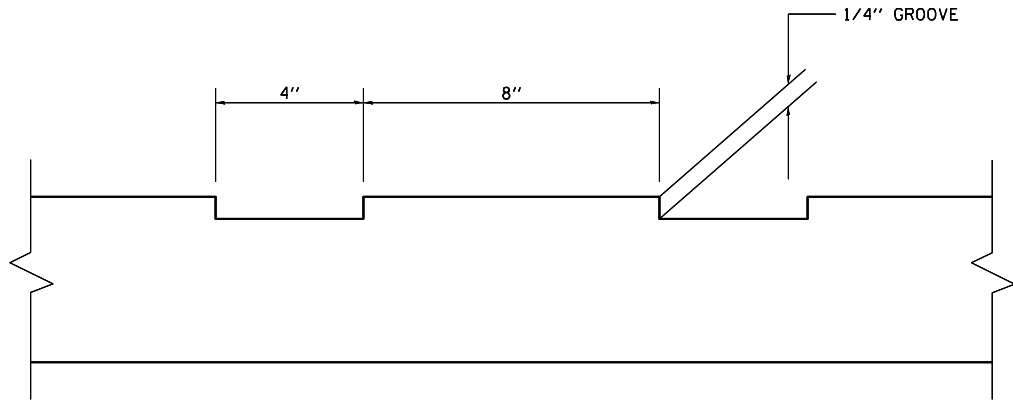
SCALE: SHEET NO. 4 OF 4 SHEETS STA. TO STA.

F.A. RTE.	SECTION	COUNTY	TOTAL SHEETS	SHEET NO.
*	IORS-2	COLES	25	24
CONTRACT NO. 74903				
ILLINOIS FED. AID PROJECT				

TYPICAL RUMBLE STRIP APPLICATION IN ADVANCE OF AN INTERSECTION



NOTE: THE 25 FEET RUMBLE AREA HAS 4" WIDE GROOVES SAWED INTO THE PAVEMENT, SEPARATED BY 8" OF EXISTING PAVEMENT. THE SAW CUTS SHALL EXTEND 12" INTO THE SHOULDER TO ALLOW FOR DRAINAGE.



NOT TO SCALE

FAU 7643, FAS 1668, FAS 1667A, FAS 1667, OR 5

DISTRICT 7 DETAIL NO. Z0055300

FILE NAME =	USER NAME = Mono.Steffen	DESIGNED -	REVISED - MMG 12-99
pw\idot-pw.bentley.com\PWIDOT\Documents\IDOT Offices\District 7\Projects\74903\CADD\Drawings\Drawings\74903-sht-details.dgn		CHECKED -	REVISED - MKS 04-08
		PLOT SCALE = 100.0000' / 1in.	REVISED -
		DATE -	REVISED -

**STATE OF ILLINOIS
DEPARTMENT OF TRANSPORTATION**

TYPICAL RUMBLE STRIP APPLICATION

SCALE: SHEET NO. OF SHEETS STA. TO STA.

F.A. RTE.	SECTION	COUNTY	TOTAL SHEETS	SHEET NO.
*	IORS-2	COLES	25	25
CONTRACT NO. 74960				
FED. ROAD DIST. NO. ILLINOIS FED. AID PROJECT				