

STATE OF ILLINOIS
DEPARTMENT OF TRANSPORTATION

| F.A.P. RTE. | SECTION | COUNTY | TOTAL SHEETS | SHEET NO. |
|-------------|---------------|------------|--------------------|-----------|
| 832 | (111,112)RS-3 | CUMBERLAND | 18 | 1 |
| | | ILLINOIS | CONTRACT NO. 74A64 | |

D-97-095-21

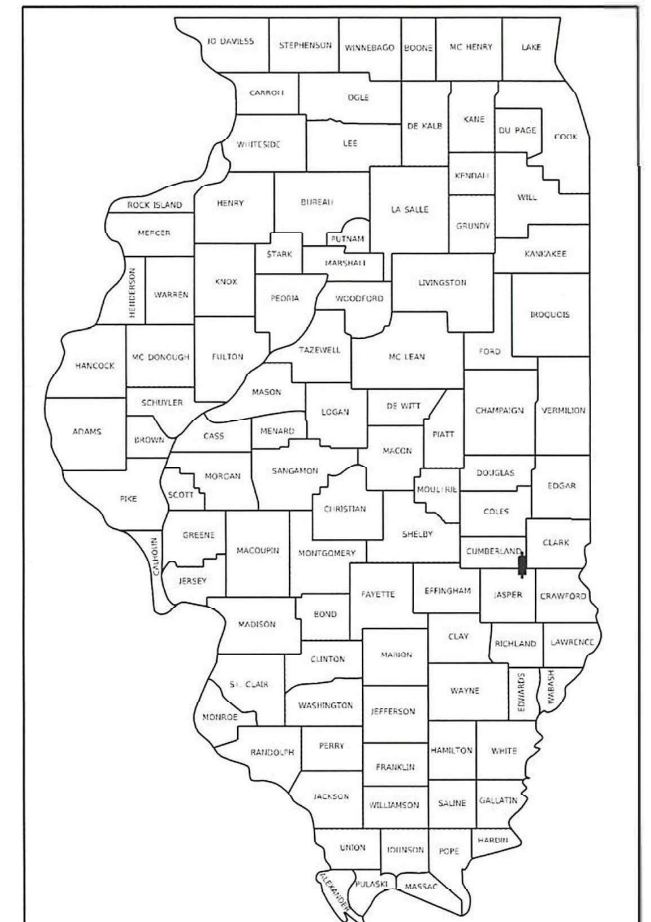
FOR INDEX OF SHEETS, SEE SHEET NO. 2

PROPOSED HIGHWAY PLANS

FAP ROUTE 832 (IL 49)
SECTION (111,112)RS-3
PROJECT STP-ZBN4(963)
DESIGNED OVERLAY
CUMBERLAND COUNTY

STATION EQUATIONS:

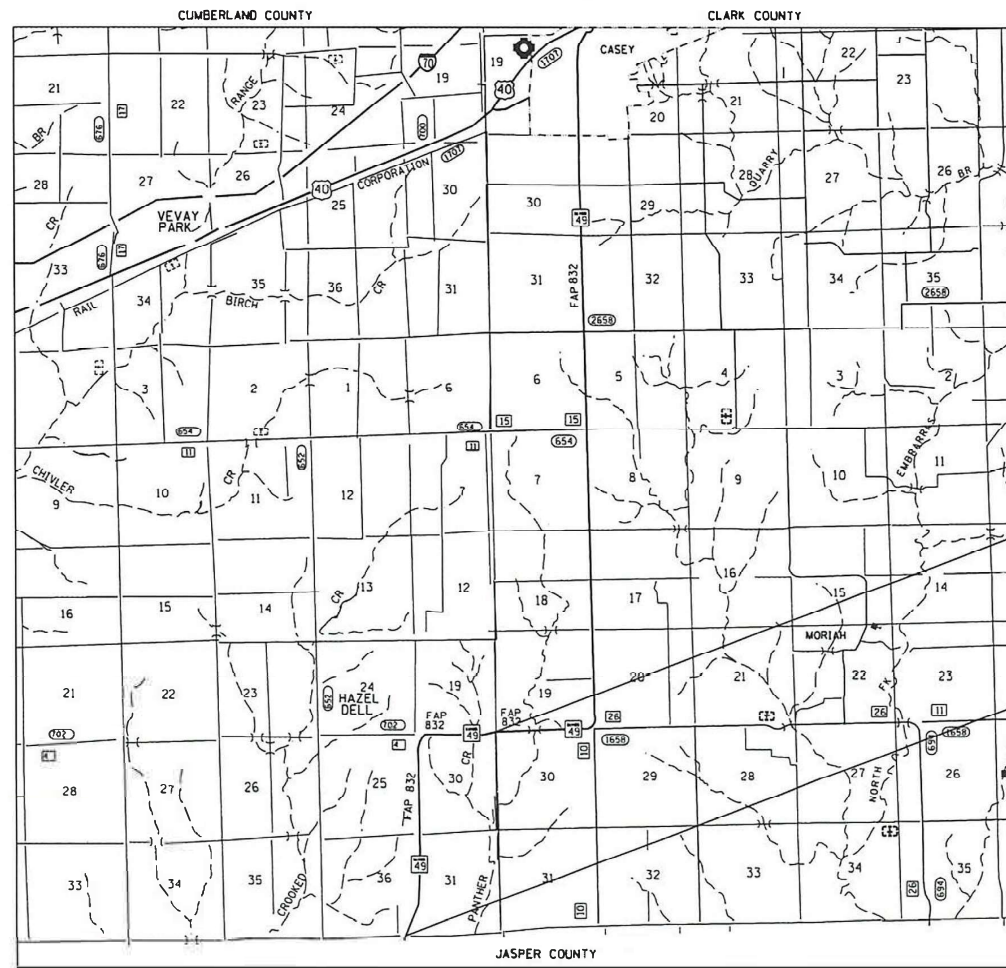
STA. 447 + 81.24 BK = STA. 450 + 14.64 AH
STA. 542 + 31.59 BK = STA. 542 + 60.70 AH



LOCATION OF SECTION INDICATED THUS: - [black rectangle] -

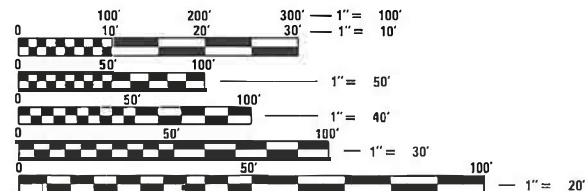
ADT (2022) = 750

C-97-164-21



PROJECT ENDS
STA. 402+95

PROJECT ENDS
STA. 551+83



FULL SIZE PLANS HAVE BEEN PREPARED USING STANDARD ENGINEERING SCALES. REDUCED SIZED PLANS WILL NOT CONFORM TO STANDARD SCALES. IN MAKING MEASUREMENTS ON REDUCED PLANS THE ABOVE SCALES MAY BE USED.

J.U.L.I.E.
JOINT UTILITY LOCATION INFORMATION FOR EXCAVATORS
1-800-892-0123
OR 811

PROJECT ENGINEER: BRIAN BIERMAN
PROJECT MANAGER: JACQUELYN SEALS

CONTRACT NO. 74A64

GROSS LENGTH = 14,625.49 FT. = 2.770 MILE
NET LENGTH = 14,625.49 FT. = 2.770 MILE

STATE OF ILLINOIS
DEPARTMENT OF TRANSPORTATION

SUBMITTED DECEMBER 16 2023
Jeffrey P. Myerka
REGIONAL ENGINEER

February 2, 2024
John A. Elk
ENGINEER OF DESIGN AND ENVIRONMENT

February 2, 2024
Stephen M. Smith
DIRECTOR OF HIGHWAYS PROJECT IMPLEMENTATION

PRINTED BY THE AUTHORITY
OF THE STATE OF ILLINOIS

GENERAL NOTES

THIS 2.8 MILE LONG PROJECT IS LOCATED ON IL 49 IN CUMBERLAND COUNTY AND BEGINS AT THE CLARK COUNTY LINE AND ENDS AT THE JASPER COUNTY LINE. PROJECT WORK ITEMS CONSIST OF PATCHING, RESURFACING, SAFETY SHOULDER, PAVEMENT MARKING AND ANY OTHER WORK NECESSARY TO COMPLETE THIS SECTION.

MATERIAL FOR AGGREGATE WEDGE SHOULDERS TYPE B, SHALL BE CRUSHED STONE, CRUSHED CONCRETE OR RAP.

MILLED PAVEMENT SHALL BE RESURFACED WITH BINDER WITHIN 5 CALENDAR DAYS.

ALL LANES OF IL 49 SHALL BE OPEN TO TRAFFIC DURING THE 2024 SOLAR ECLIPSE FROM 7:00 A.M. ON SATURDAY APRIL 6, 2024 THROUGH 10:00 P.M. ON MONDAY APRIL 8, 2024.

THE QUANTITIES FOR PAVEMENT PATCHING ARE ESTIMATES. THE ACTUAL LOCATIONS AND QUANTITIES SHALL BE DETERMINED BY THE ENGINEER IN THE FIELD.

WHEN APPLYING SHORT TERM PAVEMENT MARKINGS, TEMPORARY TAPE SHALL BE USED ON THE SURFACE COURSE AND PAINT SHALL BE USED ON THE MILLED SURFACE.

THE LOCATIONS AND/OR DEPTHS OF UNDERGROUND UTILITIES SHOWN HAVE BEEN TAKEN FROM INFORMATION FURNISHED BY THE UTILITY OWNERS AND MUST BE CONSIDERED APPROXIMATE. FIELD MARKINGS OF FACILITIES IN CRITICAL AREAS MAY BE OBTAINED BY PROVIDING MINIMUM OF NINETY-SIX (96) HOURS ADVANCE NOTICE THROUGH THE THE J.U.L.I.E. SYSTEM BY CALLING 800-892-0123.

THE RESIDENT ENGINEER SHALL BE THE SOLE JUDGE CONCERNING THE CURING TIME FOR HOT-MIX ASPHALT LIFTS.

THE FOLLOWING MIXTURE REQUIREMENTS ARE APPLICABLE TO THIS PROJECT:

| LOCATION(S) | MIXTURE USE(S) | PG | DESIGN AIR VOIDS | MIXTURE COMPOSITION | FRICTION AGGREGATE | MIXTURE WEIGHT | QUALITY MANAGEMENT PROGRAM | SUBLOT SIZE | MATERIAL TRANSFER DEVICE (REQUIRED?) |
|-------------|---|----------|------------------|---------------------|--------------------|----------------|----------------------------|-------------|--------------------------------------|
| MAINLINE | HMA SURFACE COURSE, IL-9.5, MIX "C", N70 (2") | PG 64-22 | 4.0% @ N=70 | IL - 9.5 | MIXTURE C | N70 | QCP | 1000 | N/A |
| MAINLINE | HMA BINDER COURSE, IL-9.5FG, N70 (1.75") | PG 64-22 | 4.0% @ N=70 | IL - 9.5FG | N/A | N70 | QCP | 1000 | N/A |
| PATCHING | HMA BINDER COURSE, IL-19.0, N70 | PG 64-22 | 4.0% @ N=70 | IL - 19.0 | N/A | N70 | QC/QA | 3000 | N/A |
| INCIDENTAL | HMA SURFACE COURSE, IL-9.5, MIX "C", N70 | PG 64-22 | 4.0% @ N=70 | IL - 9.5 | MIXTURE C | N70 | QC/QA | 3000 | N/A |

INDEX OF SHEETS

| SHEET NO. | ITEM |
|-----------|--|
| 1 | COVER SHEET |
| 2 | GENERAL NOTES, INDEX OF SHEETS & LIST OF STANDARDS |
| 3 | SUMMARY OF QUANTITIES |
| 4-5 | TYPICAL SECTIONS |
| 6 | SCHEDULES OF QUANTITIES |
| 7-12 | PLAN SHEETS |
| 13 | PAVING DETAILS |
| 14 | ENTRANCE DETAILS |
| 15-18 | STRIPING DETAILS |

THE FOLLOWING STANDARDS ARE A PART OF THESE PLANS AND ARE INCLUDED FOLLOWING THE LAST NUMBERED SHEET OF THE PLANS.

STANDARD NO. DESCRIPTION

| | |
|-----------|---|
| 000001-08 | STANDARD SYMBOLS, ABBREVIATIONS AND PATTERNS |
| 001006 | DECIMAL OF AN INCH AND OF A FOOT |
| 406201-01 | MAILBOX TURNOUT |
| 442201-03 | CLASS C AND D PATCHES |
| 642006-01 | SHOULDER RUMBLE STRIPS, 8 IN. |
| 667101-02 | PERMANENT SURVEY MARKERS |
| 701001-02 | OFF-RD OPERATIONS, 2L, 2W, MORE THAN 15' AWAY |
| 701006-05 | OFF-RD OPERATIONS, 2L, 2W, 15' TO 24' FROM PAVEMENT EDGE |
| 701011-04 | OFF-RD MOVING OPERATIONS, 2L, 2W, DAY ONLY |
| 701201-05 | LANE CLOSURE, 2L, 2W, DAY ONLY, FOR SPEED \geq 45 MPH |
| 701301-04 | LANE CLOSURE, 2L, 2W, SHORT TIME OPERATIONS |
| 701306-04 | LANE CLOSURE, 2L, 2W, SLOW MOVING OPERATIONS DAY ONLY, FOR SPEEDS \geq 45 MPH |
| 701311-03 | LANE CLOSURE, 2L, 2W, MOVING OPERATIONS - DAY ONLY |
| 701336-07 | LANE CLOSURE, 2L, 2W, WORK AREAS IN SERIES, FOR SPEEDS \geq 45 MPH |
| 701901-09 | TRAFFIC CONTROL DEVICES |
| 780001-05 | TYPICAL PAVEMENT MARKINGS |
| 781001-04 | TYPICAL APPLICATIONS RAISED REFLECTIVE PAVEMENT MARKERS |

REV. - MS

MODEL: D:\default
 FILE: M:\asrc-cha-bentley.com\PROJECTS\Documents\DOT_Offices\District_7\Project\374A&I\CADD\374A\CHSHEETS\374A&I-8b-gennote.dgn

| | | | | | | | | | | |
|------------------------------|------------|-----------|---|---|--|--------------------|---------------|------------|--------------|-----------|
| USER NAME = Mona.Steffen | DESIGNED - | REVISED - | STATE OF ILLINOIS DEPARTMENT OF TRANSPORTATION | GENERAL NOTES, INDEX OF SHEETS & LIST OF STANDARDS | | F.A.P. RTE. | SECTION | COUNTY | TOTAL SHEETS | SHEET NO. |
| PLOT SCALE = 100.0000' / in. | DRAWN - | REVISED - | | | | 832 | (111,112)RS-3 | CUMBERLAND | 18 | 2 |
| PLOT DATE = 12/15/2023 | CHECKED - | REVISED - | | SCALE: SHEET OF SHEETS STA. TO STA. | | CONTRACT NO. 74A64 | | | | |
| | DATE - | REVISED - | | ILLINOIS FED. AID PROJECT | | | | | | |

80% FED
20% STATE

80% FED
20% STATE

| SUMMARY OF QUANTITIES | | | TOTAL QUANTITIES | CONSTRUCTION TYPE CODE | | |
|-----------------------|--|-------|------------------|------------------------|--|--|
| CODE NO | ITEM | UNIT | | 0005 | | |
| 40200800 | AGGREGATE SURFACE COURSE, TYPE B | TON | 44 | 44 | | |
| 40600275 | BITUMINOUS MATERIALS (PRIME COAT) | POUND | 33335 | 33335 | | |
| 40600370 | LONGITUDINAL JOINT SEALANT | FOOT | 14625 | 14625 | | |
| 40600990 | TEMPORARY RAMP | SO YD | 33 | 33 | | |
| 40602970 | HOT-MIX ASPHALT BINDER COURSE, IL-9.5FG, N70 | TON | 4840 | 4840 | | |
| 40604052 | HOT-MIX ASPHALT SURFACE COURSE, IL-9.5, MIX "C", N70 | TON | 5531 | 5531 | | |
| 40800050 | INCIDENTAL HOT-MIX ASPHALT SURFACING | TON | 30 | 30 | | |
| 44000155 | HOT-MIX ASPHALT SURFACE REMOVAL, 1 1/2" | SO YD | 49598 | 49598 | | |
| 44201835 | CLASS D PATCHES, TYPE I, 16 INCH | SO YD | 8 | 8 | | |
| 44201839 | CLASS D PATCHES, TYPE II, 16 INCH | SO YD | 1009 | 1009 | | |
| 44201843 | CLASS D PATCHES, TYPE III, 16 INCH | SO YD | 68 | 68 | | |
| 44201845 | CLASS D PATCHES, TYPE IV, 16 INCH | SO YD | 140 | 140 | | |
| 48102100 | AGGREGATE WEDGE SHOULDER, TYPE B | TON | 1003 | 1003 | | |
| 64200108 | SHOULDER RUMBLE STRIPS, 8 INCH | FOOT | 28596 | 28596 | | |

| SUMMARY OF QUANTITIES | | | TOTAL QUANTITIES | CONSTRUCTION TYPE CODE | | |
|-----------------------|---|--------|------------------|------------------------|--|--|
| CODE NO | ITEM | UNIT | | 0005 | | |
| 67100100 | MOBILIZATION | L SUM | 1 | 1 | | |
| 70100450 | TRAFFIC CONTROL AND PROTECTION, STANDARD 701201 | L SUM | 1 | 1 | | |
| 70100460 | TRAFFIC CONTROL AND PROTECTION, STANDARD 701306 | L SUM | 1 | 1 | | |
| 70100600 | TRAFFIC CONTROL AND PROTECTION, STANDARD 701336 | L SUM | 1 | 1 | | |
| 70107025 | CHANGEABLE MESSAGE SIGN | CAL DA | 28 | 28 | | |
| 70300100 | SHORT TERM PAVEMENT MARKING | FOOT | 4388 | 4388 | | |
| 70300150 | SHORT TERM PAVEMENT MARKING REMOVAL | SO FT | 488 | 488 | | |
| 78001110 | PAINT PAVEMENT MARKING - LINE 4" | FOOT | 37077 | 37077 | | |
| 78100100 | RAISED REFLECTIVE PAVEMENT MARKER | EACH | 283 | 283 | | |
| 78300200 | RAISED REFLECTIVE PAVEMENT MARKER REMOVAL | EACH | 283 | 283 | | |
| X0326440 | SURFACE REMOVAL, VARIABLE DEPTH (SPECIAL) | SO YD | 282 | 282 | | |
| X4060995 | TEMPORARY RAMP (SPECIAL) | SO YD | 36 | 36 | | |
| Z0049799 | PROTECTING OR RESETTING SURVEY MARKERS | EACH | 7 | 7 | | |

REV. - MS

MODEL: Default
 FILE: M:\MS\p\11112-rw-bentley.com\PROJECTS\DOT\Office\District 7\Projects\74A64\CADD\Drawings\CAD\Sheets\DOT\74A64-SP-S00.dgn

| | | |
|------------------------------|------------|-----------|
| USER NAME = Mona.Steffen | DESIGNED - | REVISED - |
| | DRAWN - | REVISED - |
| PLOT SCALE = 100.0000' / in. | CHECKED - | REVISED - |
| PLOT DATE = 12/15/2023 | DATE - | REVISED - |

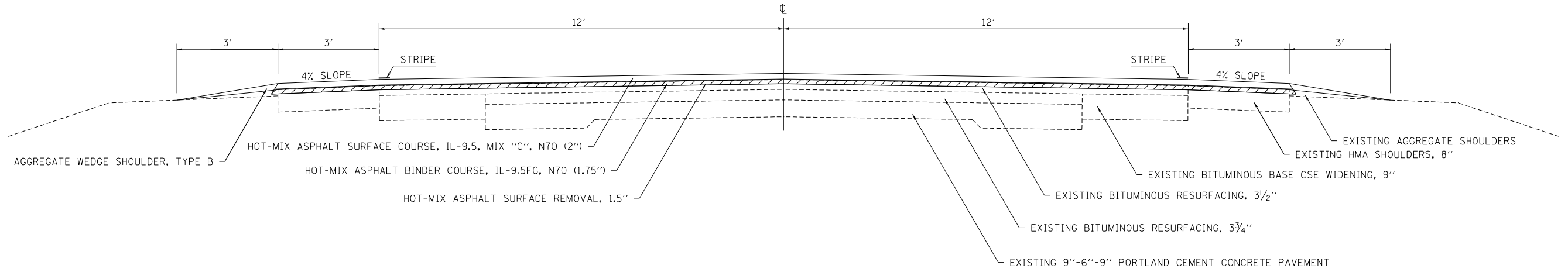
**STATE OF ILLINOIS
DEPARTMENT OF TRANSPORTATION**

SUMMARY OF QUANTITIES

SCALE: SHEET OF SHEETS STA. TO STA.

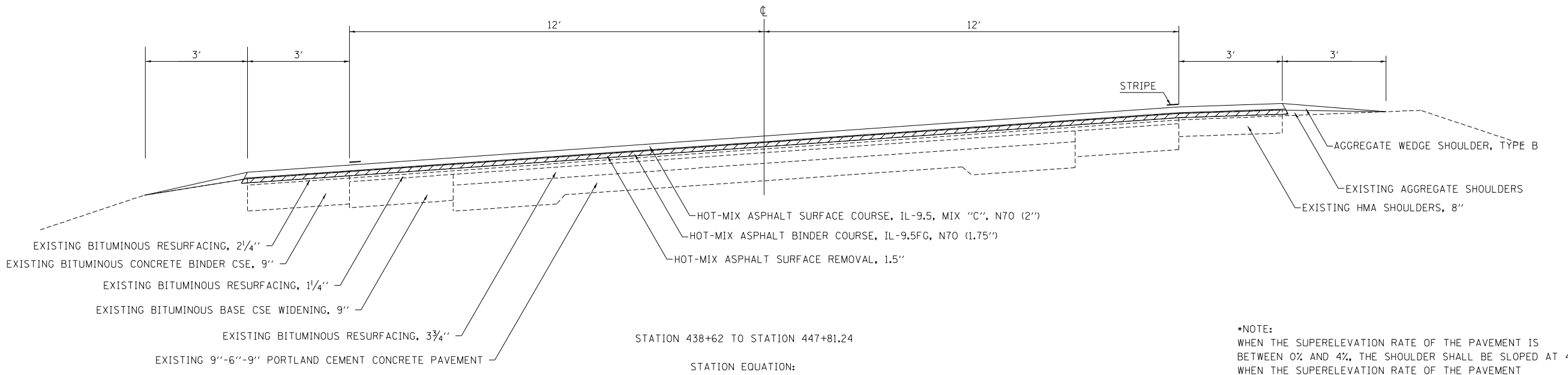
| | | | | |
|---------------------------|---------------|------------|--------------|-----------|
| F.A.P. RTE. | SECTION | COUNTY | TOTAL SHEETS | SHEET NO. |
| 832 | (111,112)RS-3 | CUMBERLAND | 18 | 3 |
| CONTRACT NO. 74A64 | | | | |
| ILLINOIS FED. AID PROJECT | | | | |

TYPICAL CROSS SECTION
F. A. P. 832 (IL. 49)



STATION 402+95 TO STATION 438+62
 STATION 450+14.64 TO STATION 532+15
 STATION 542+60.70 TO STATION 551+83

TYPICAL CROSS SECTION
F. A. P. 832 (IL. 49)



STATION 438+62 TO STATION 447+81.24
 STATION EQUATION:
 STATION 447+81.24 BK = STATION 450+14.64 AH

***NOTE:**
 WHEN THE SUPERELEVATION RATE OF THE PAVEMENT IS BETWEEN 0% AND 4%, THE SHOULDER SHALL BE SLOPED AT 4%. WHEN THE SUPERELEVATION RATE OF THE PAVEMENT EXCEEDS 4%, THE SHOULDER SHALL BE SLOPED SO THAT THE ALGEBRAIC DIFFERENCE BETWEEN PAVEMENT AND SHOULDER WILL NOT BE GREATER THAN 8%.

MODEL: Default
 FILE: \\nafe-pw-bentley.com\P\INDOT\Documents\DOT Office\Director_7\Projects\74A64\CADD\Drawings\Drawings\74A64-Sub-1\74A64-Sub-1.dgn

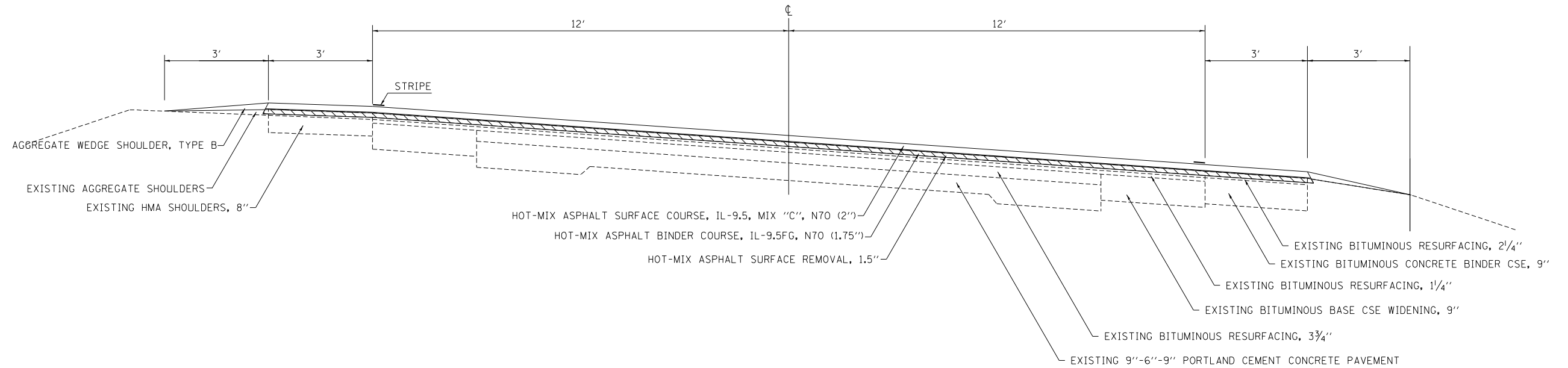
| | | |
|------------------------------|------------|-----------|
| USER NAME = Mona.Steffen | DESIGNED - | REVISED - |
| | DRAWN - | REVISED - |
| PLOT SCALE = 100,0000' / in. | CHECKED - | REVISED - |
| PLOT DATE = 12/15/2023 | DATE - | REVISED - |

STATE OF ILLINOIS
DEPARTMENT OF TRANSPORTATION

| | | | | |
|-------------------------|-------|----|--------|--------------|
| TYPICAL SECTIONS | | | | |
| SCALE: | SHEET | OF | SHEETS | STA. TO STA. |

| | | | | |
|---------------------------|---------------|------------|--------------|-----------|
| F.A.P. RTE. | SECTION | COUNTY | TOTAL SHEETS | SHEET NO. |
| 832 | (111,112)RS-3 | CUMBERLAND | 18 | 4 |
| CONTRACT NO. 74A64 | | | | |
| ILLINOIS FED. AID PROJECT | | | | |

**TYPICAL CROSS SECTION
F.A.P. 832 (IL. 49)**



•NOTE:
WHEN THE SUPERELEVATION RATE OF THE PAVEMENT IS BETWEEN 0% AND 4%, THE SHOULDER SHALL BE SLOPED AT 4%.
WHEN THE SUPERELEVATION RATE OF THE PAVEMENT EXCEEDS 4%, THE SHOULDER SHALL BE SLOPED SO THAT THE ALGEBRAIC DIFFERENCE BETWEEN PAVEMENT AND SHOULDER WILL NOT BE GREATER THAN 8%.

STATION 532+15 TO STATION 542+31.59

STATION EQUATION:
STATION 542+31.59 BK = STATION 542+60.70 AH

**STATE OF ILLINOIS
DEPARTMENT OF TRANSPORTATION**

TYPICAL SECTIONS

SCALE: SHEET OF SHEETS STA. TO STA.

| | | | | |
|--------------------|---------------|------------|---------------------------|-----------|
| F.A.P. RTE. | SECTION | COUNTY | TOTAL SHEETS | SHEET NO. |
| 832 | (111,112)RS-3 | CUMBERLAND | 18 | 5 |
| CONTRACT NO. 74A64 | | | ILLINOIS FED. AID PROJECT | |

MODEL: Default
 FILE: \\mdepc-pw-beadley.com\P\DOT\Documents\DOT Office\Director_T\Project\74A64\CADD\DATA\CAD\Sheet\ID74A64-5-18-23.dgn

| PAVING SCHEDULE | | | | | | | | | | | | | |
|---|--------|--------|---|--------------------------------|---------------------------------------|-----------------------------------|--|---|--------------------------------|----------------|----------------------------------|----------------------------|--------------------------|
| | | LENGTH | TOTAL ASPHALT PAVEMENT AND SHOULDER WIDTH | TOTAL AGGREGATE SHOULDER WIDTH | HOT-MIX ASPHALT SURFACE REMOVAL, 1.5" | BITUMINOUS MATERIALS (PRIME COAT) | HOT-MIX ASPHALT BINDER COURSE, IL-9.5FG, N70 (1.75") | HOT-MIX ASPHALT SURFACE COURSE, IL-9.5, MIX "C", N70 (2") | SHOULDER RUMBLE STRIPS, 8 INCH | TEMPORARY RAMP | AGGREGATE WEDGE SHOULDER, TYPE B | LONGITUDINAL JOINT SEALANT | TEMPORARY RAMP (SPECIAL) |
| STA | TO | FEET | FEET | FEET | SQ YD | POUND | TON | TON | FOOT | SQ YD | TON | FOOT | SQ YD |
| 402+95 | 438+62 | 3567 | 30 | 6 | 11890 | 8012 | 1163 | 1329 | 7007 | 17 | 245 | 3567 | 0 |
| 438+62 | 447+81 | 919 | 30 | 6 | 3911 | 2573 | 373 | 427 | 1538 | 0 | 55 | 919 | 10 |
| STATION EQUATION: 447+81.24 BK = 450+14.64 AH | | - | - | - | - | - | - | - | - | - | - | - | - |
| 450+15 | 542+32 | 9217 | 30 | 6 | 30723 | 20675 | 3002 | 3431 | 18207 | 0 | 638 | 9217 | 26 |
| STATION EQUATION: 542+31.59 BK = 542+60.70 AH | | - | - | - | - | - | - | - | - | - | - | - | - |
| 542+61 | 551+83 | 922 | 30 | 6 | 3073 | 2075 | 301 | 344 | 1844 | 17 | 66 | 922 | 0 |
| TOTALS: | | 14625 | | | 49598 | 33335 | 4840 | 5531 | 28596 | 33 | 1003 | 14625 | 36 |

| STRIPING SCHEDULE | | | | | | | | | | | |
|---|--------|--------|----------------------------------|-----------------------------------|---|-----------------------------|-------------------------------------|--|--|--|--|
| | | LENGTH | PAINT PAVEMENT MARKING - LINE 4" | RAISED REFLECTIVE PAVEMENT MARKER | RAISED REFLECTIVE PAVEMENT MARKER REMOVAL | SHORT TERM PAVEMENT MARKING | SHORT TERM PAVEMENT MARKING REMOVAL | | | | |
| STA | TO | FEET | FOOT | EACH | EACH | FOOT | SQ FT | | | | |
| 402+95 | 416+27 | 1332 | 2997 | 17 | 17 | 400 | 44 | | | | |
| 416+27 | 422+52 | 625 | 2031 | 15 | 16 | 188 | 21 | | | | |
| 422+52 | 426+67 | 415 | 934 | 5 | 5 | 125 | 14 | | | | |
| 426+67 | 430+09 | 342 | 1112 | 9 | 9 | 103 | 11 | | | | |
| 430+09 | 433+60 | 351 | 1404 | 9 | 9 | 105 | 12 | | | | |
| 433+60 | 436+62 | 302 | 982 | 8 | 8 | 91 | 10 | | | | |
| 436+62 | 447+81 | 1119 | 4176 | 84 | 84 | 336 | 37 | | | | |
| STATION EQUATION: 447+81.24 BK = 450+14.64 AH | | - | - | - | - | - | - | | | | |
| 450+15 | 452+49 | 234 | 936 | 6 | 6 | 70 | 8 | | | | |
| 452+49 | 458+15 | 566 | 1840 | 14 | 14 | 170 | 19 | | | | |
| 458+15 | 542+32 | 8417 | 18822 | 105 | 105 | 2525 | 281 | | | | |
| STATION EQUATION: 542+31.59 BK = 542+60.70 AH | | - | - | - | - | - | - | | | | |
| 542+61 | 551+83 | 922 | 1844 | 12 | 12 | 277 | 31 | | | | |
| TOTALS: | | 14625 | 37077 | 283 | 283 | 4388 | 488 | | | | |

| ENTRANCE SCHEDULE | | | | | | | | | | | |
|-------------------|-------|------|----------|-----------------|------------------|------------------|------------|--------------------------------------|--|----------------------------------|--|
| | | | | | | | | INCIDENTAL HOT-MIX ASPHALT SURFACING | SURFACE REMOVAL VARIABLE DEPTH (SPECIAL) | AGGREGATE SURFACE COURSE, TYPE B | |
| STATION | LT/RT | TYPE | MATERIAL | LENGTH "L" FEET | WIDTH @ EOP FEET | WIDTH @ "L" FEET | AREA SQ FT | TON | SQ YD | TON | |
| 405+94 | LT | FE | AGG | 10 | 20 | 15 | 175 | | | 2.1 | |
| 407+45 | RT | FE | AGG | 10 | 18 | 11 | 145 | | | 1.7 | |
| 418+88 | LT | FE | AGG | 10 | 20 | 20 | 200 | | | 2.4 | |
| 419+35 | LT | PE | HMA | 10 | 29 | 16 | 225 | 2.6 | 25.0 | | |
| 421+11 | LT | PE | AGG | 10 | 48 | 32 | 400 | | | 4.7 | |
| 423+31 | RT | FE | AGG | 10 | 30 | 30 | 300 | | | 3.6 | |
| 425+01 | RT | PE | HMA | 10 | 30 | 18 | 240 | 2.8 | 26.7 | | |
| 425+41 | LT | FE | AGG | 10 | 21 | 20 | 205 | | | 2.4 | |
| 426+77 | RT | PE | AGG | 10 | 20 | 15 | 175 | | | 2.1 | |
| 429+03 | LT | FE | AGG | 10 | 15 | 15 | 150 | | | 1.8 | |
| 452+86 | LT | PE | HMA | 10 | 33 | 21 | 270 | 3.2 | 30.0 | | |
| 454+45 | LT | PE | HMA | 10 | 29 | 18 | 235 | 2.7 | 26.1 | | |
| 459+24 | LT | FE | AGG | 10 | 28 | 13 | 205 | | | 2.4 | |
| 471+14 | RT | FE | AGG | 10 | 25 | 14 | 195 | | | 2.3 | |
| 479+77 | LT | FE | HMA | 10 | 30 | 16 | 230 | 2.7 | 25.6 | | |
| 479+77 | RT | PE | HMA | 8 | 49 | 14 | 252 | 2.9 | 28.0 | | |
| 484+82 | RT | FE | AGG | 10 | 40 | 40 | 400 | | | 4.7 | |
| 492+02 | LT | FE | AGG | 10 | 35 | 13 | 240 | | | 2.8 | |
| 497+93 | RT | PRA | HMA | 10 | 58 | 37 | 475 | 5.5 | 52.8 | | |
| 497+95 | LT | PRA | HMA | 10 | 58 | 37 | 475 | 5.5 | 52.8 | | |
| 509+45 | RT | FE | HMA | 7 | 23 | 15 | 133 | 1.6 | 14.8 | | |
| 511+42 | RT | FE | AGG | 10 | 20 | 15 | 175 | | | 2.1 | |
| 513+44 | LT | FE | AGG | 10 | 30 | 17 | 235 | | | 2.8 | |
| 524+86 | RT | FE | AGG | 10 | 25 | 20 | 225 | | | 2.7 | |
| 532+78 | LT | FE | AGG | 10 | 30 | 20 | 250 | | | 3.0 | |
| TOTALS: | | | | | | | | 30 | 282 | 44 | |

| SURVEY MARKERS SCHEDULE | | | | | |
|-----------------------------|----------|--------------------------|----------------------------------|------|------|
| STATION | OFFSET | DESCRIPTION | REPLACEMENT TYPE | EACH | EACH |
| 405-97.84 | 1.73' RT | PI - MAG NAIL | TYPE I - ALUM. IDOT DISK - FLUSH | 1 | 1 |
| 409-24.94 | 0.0' | PT - BRASS DISK | TYPE I - ALUM. IDOT DISK - FLUSH | 1 | 1 |
| 438-61.73 | 0.0' | PC - ALUM. DISK | TYPE I - ALUM. IDOT DISK - FLUSH | 1 | 1 |
| 447+81.24 BK = 450+14.64 AH | 0.0' | STA. EQU. - ALUM. DISK | TYPE I - ALUM. IDOT DISK - FLUSH | 1 | 1 |
| 497+89.8 | 0.0' | POSS. SECT. COR MAG NAIL | MAG NAIL | - | 1 |
| 532-15.48 | 0.0' | PC - MAG NAIL | TYPE I - ALUM. IDOT DISK - FLUSH | 1 | 1 |
| 542+31.59 BK = 542+60.70 AH | 0.0' | STA. EQU. - ALUM. DISK | TYPE I - ALUM. IDOT DISK - FLUSH | 1 | 1 |
| TOTALS: | | | | 6 | 7 |

| PATCHING SCHEDULE | | | | |
|-------------------|----------------------------------|-----------------------------------|------------------------------------|-----------------------------------|
| | CLASS D PATCHES, TYPE I, 16 INCH | CLASS D PATCHES, TYPE II, 16 INCH | CLASS D PATCHES, TYPE III, 16 INCH | CLASS D PATCHES, TYPE IV, 16 INCH |
| | SQ YD | SQ YD | SQ YD | SQ YD |
| NORTHBOUND | 4 | 512 | 24 | 0 |
| SOUTHBOUND | 4 | 497 | 44 | 140 |
| TOTALS: | 8 | 1009 | 68 | 140 |

MODEL: \\MODELS\MRMS
FILE NAME: 311215

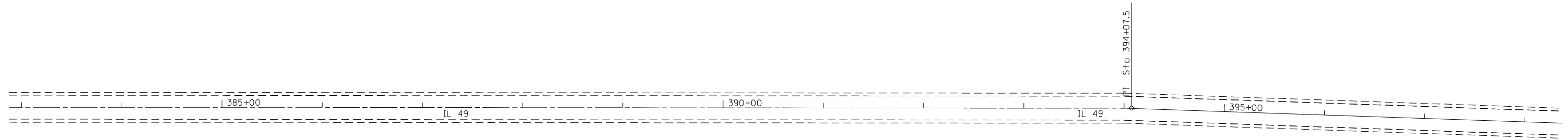
| | | |
|-----------------------|------------|-----------|
| USER NAME = \$USERS | DESIGNED - | REVISED - |
| | DRAWN - | REVISED - |
| PLOT SCALE = \$SCALES | CHECKED - | REVISED - |
| PLOT DATE = \$DATES | DATE - | REVISED - |

STATE OF ILLINOIS
DEPARTMENT OF TRANSPORTATION

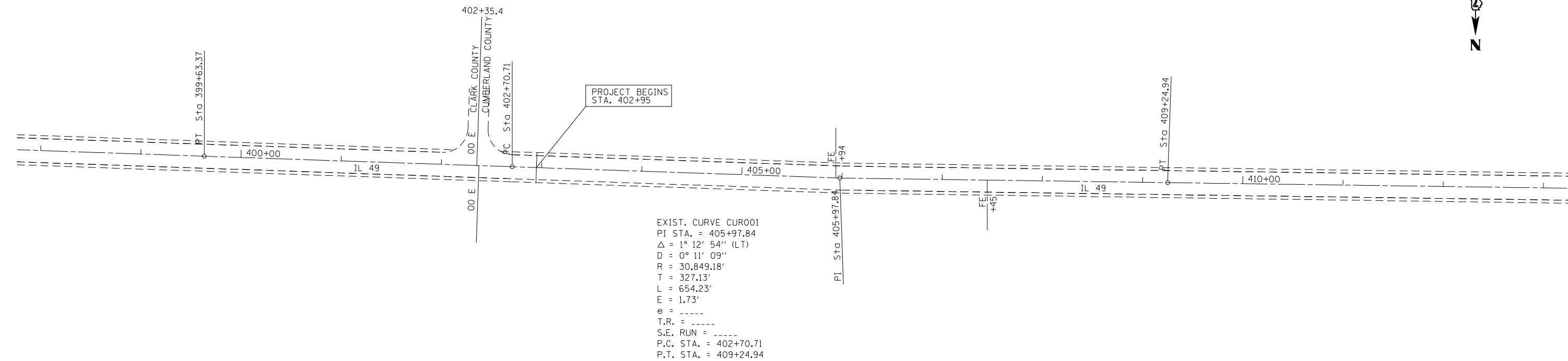
SCHEDULES OF QUANTITIES

SCALE: SHEET OF SHEETS STA. TO STA.

| | | | | |
|---------------------------|-----------------------|-------------------|--------------------|-------------|
| F.A.P. RTE. 832 | SECTION (111,112)RS-3 | COUNTY CUMBERLAND | TOTAL SHEETS 18 | SHEET NO. 6 |
| ILLINOIS FED. AID PROJECT | | | CONTRACT NO. 74A64 | |



NOT TO SCALE



NOT TO SCALE

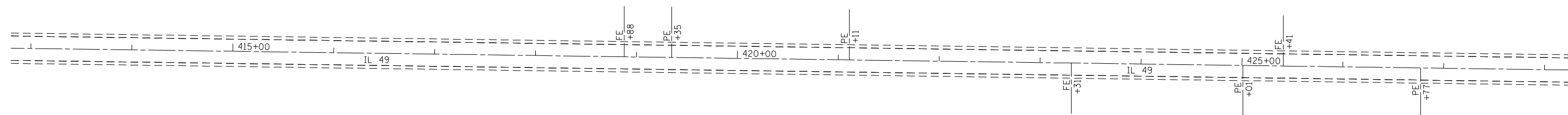
| | | | |
|--|--------------------------|------------|-----------|
| FILE NAME = | USER NAME = Mono.Steffen | DESIGNED - | REVISED - |
| p:\11dot-pw.bentley.com\PWIDOT\Documents\IDOT Offices\District 7\Projects\74A64\CADD\Drawings\Sheets\774A64-sht-plan.dgn | | CHECKED - | REVISED - |
| Default | PLOT DATE = 12/15/2023 | DATE - | REVISED - |

**STATE OF ILLINOIS
DEPARTMENT OF TRANSPORTATION**

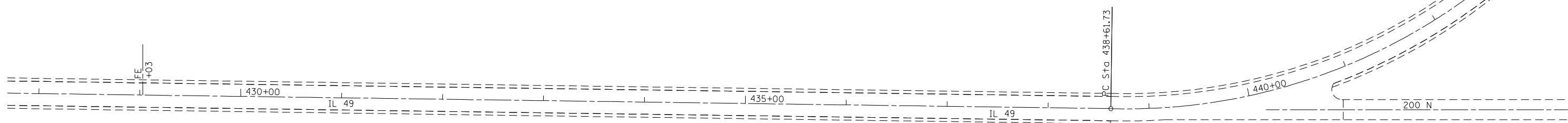
PLAN SHEETS

SHEET OF SHEETS STA. 383+00 TO STA. 413+00

| F.A.P. RTE. | SECTION | COUNTY | TOTAL SHEETS | SHEET NO. |
|---------------------------|---------------|------------|--------------|-----------|
| 832 | (111.112)R5-3 | CUMBERLAND | 18 | 7 |
| CONTRACT NO. 74A64 | | | | |
| ILLINOIS FED. AID PROJECT | | | | |



NOT TO SCALE



NOT TO SCALE

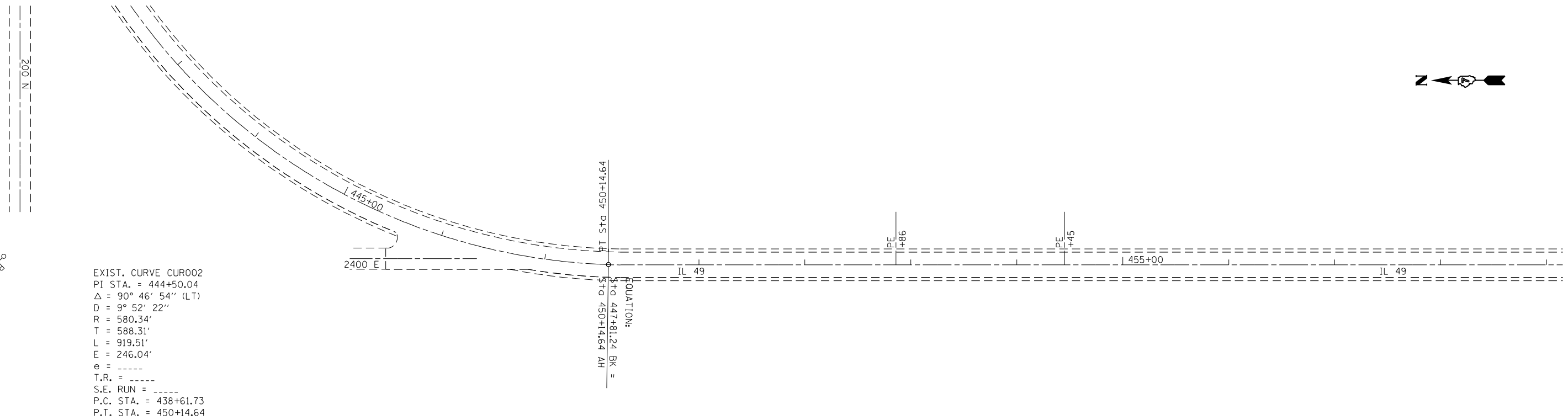
| | | | |
|--|------------------------------|------------|-----------|
| FILE NAME = | USER NAME = Mono.Steffen | DESIGNED - | REVISED - |
| p:\11dot-pw.bentley.com\PWIDOT\Documents\IDOT Offices\District 7\Projects\74A64\CADD\Drawings\Sheets\774A64-sht-plan.dgn | | CHECKED - | REVISED - |
| Default | PLOT SCALE = 100.0000' / in. | DATE - | REVISED - |
| | PLOT DATE = 12/15/2023 | | |

**STATE OF ILLINOIS
DEPARTMENT OF TRANSPORTATION**

PLAN SHEETS

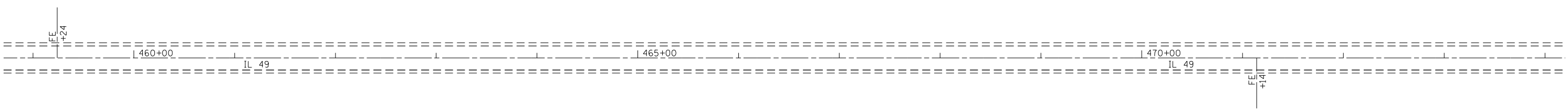
SHEET OF SHEETS STA. 413+00 TO STA. 443+00

| F.A.P. RTE. | SECTION | COUNTY | TOTAL SHEETS | SHEET NO. |
|---------------------------|---------------|------------|--------------|-----------|
| 832 | (111.112)RS-3 | CUMBERLAND | 18 | 8 |
| CONTRACT NO. 74A64 | | | | |
| ILLINOIS FED. AID PROJECT | | | | |



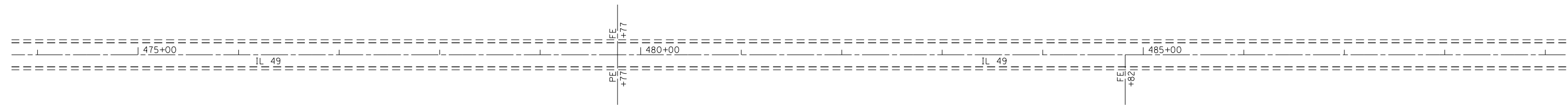
EXIST. CURVE CUR002
 PI STA. = 444+50.04
 Δ = 90° 46' 54" (LT)
 D = 9° 52' 22"
 R = 580.34'
 T = 588.31'
 L = 919.51'
 E = 246.04'
 e = -----
 T.R. = -----
 S.E. RUN = -----
 P.C. STA. = 438+61.73
 P.T. STA. = 450+14.64

NOT TO SCALE

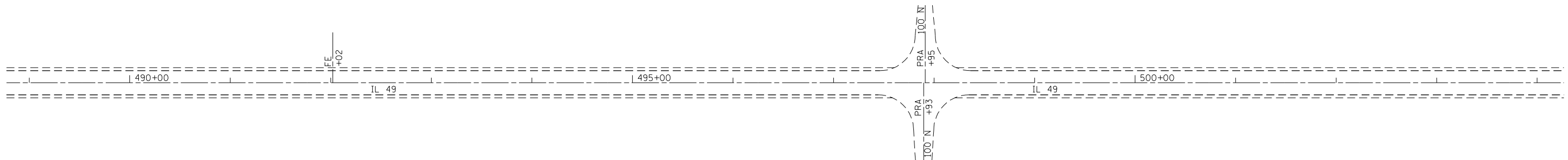


NOT TO SCALE

| | | | | | | | | | | | |
|---|------------------------------|------------|-----------|---|--------------------|--------------------|---------------|----------------|---------------------------|-----------|--|
| FILE NAME = | USER NAME = Mono.Steffen | DESIGNED - | REVISED - | STATE OF ILLINOIS DEPARTMENT OF TRANSPORTATION | PLAN SHEETS | F.A.P. RTE. | SECTION | COUNTY | TOTAL SHEETS | SHEET NO. | |
| p:\dot-pw.bentley.com\PWIDOT\Documents\IDOT Offices\District 7\Projects\74A64\CADD\Drawings\Sheets\74A64-sht-plan.dgn | | CHECKED - | REVISED - | | | 832 | (111.112)R5-3 | CUMBERLAND | 18 | 9 | |
| Default | PLOT SCALE = 100.0000' / in. | DATE - | REVISED - | | | CONTRACT NO. 74A64 | | | ILLINOIS FED. AID PROJECT | | |
| | PLOT DATE = 12/15/2023 | | | | | SHEET OF SHEETS | STA. 443+00 | TO STA. 474+00 | | | |



NOT TO SCALE



NOT TO SCALE

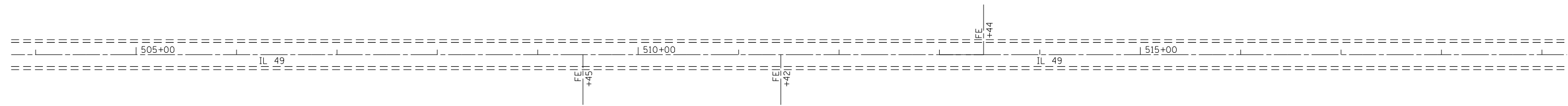
| | | | |
|---|------------------------------|------------|-----------|
| FILE NAME = | USER NAME = Mono.Steffen | DESIGNED - | REVISED - |
| pw:\idot-pw.bentley.com\PWIDOT\Documents\IDOT Offices\District 7\Projects\74A64\CADD\Drawings\Drawings\74A64-sht-plan.dgn | | CHECKED - | REVISED - |
| Default | PLOT SCALE = 100.0000' / in. | DATE - | REVISED - |
| | PLOT DATE = 12/15/2023 | | |

**STATE OF ILLINOIS
DEPARTMENT OF TRANSPORTATION**

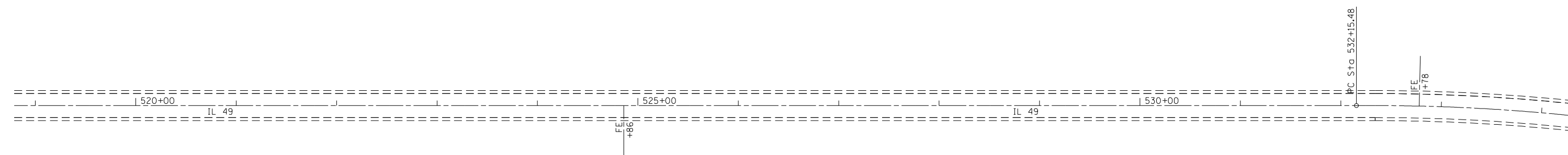
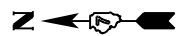
PLAN SHEETS

SHEET OF SHEETS STA. 474+00 TO STA. 504+00

| F.A.P. RTE. | SECTION | COUNTY | TOTAL SHEETS | SHEET NO. |
|---------------------------|---------------|------------|--------------|--------------------|
| 832 | (111.112)R5-3 | CUMBERLAND | 18 | 10 |
| | | | | CONTRACT NO. 74A64 |
| ILLINOIS FED. AID PROJECT | | | | |

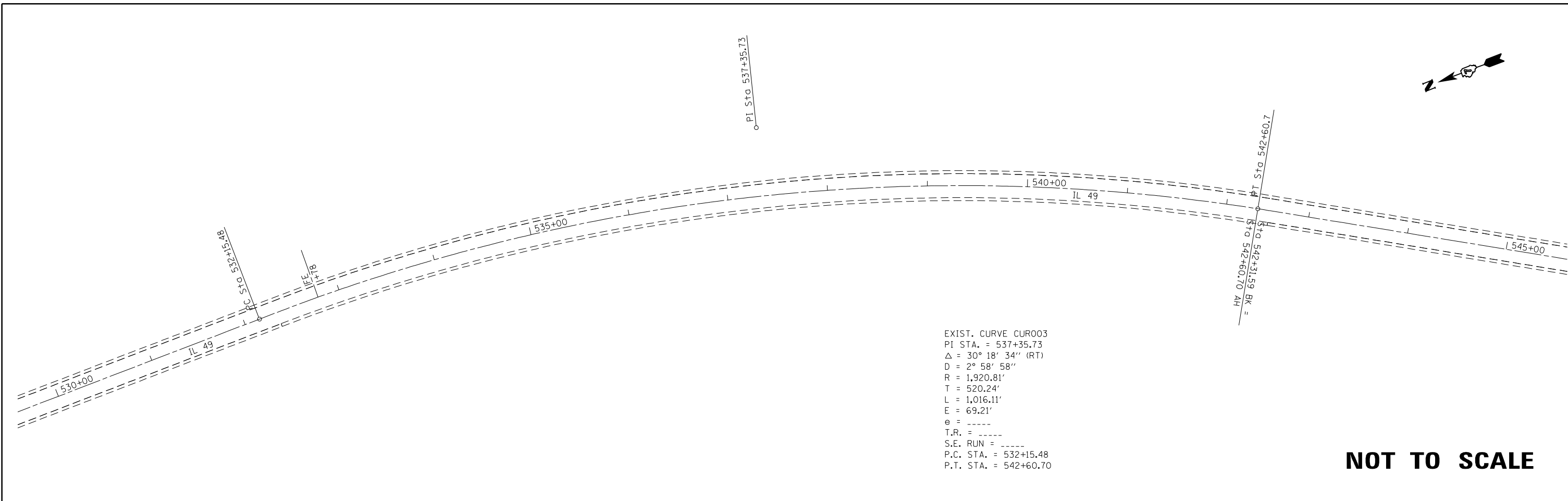


NOT TO SCALE



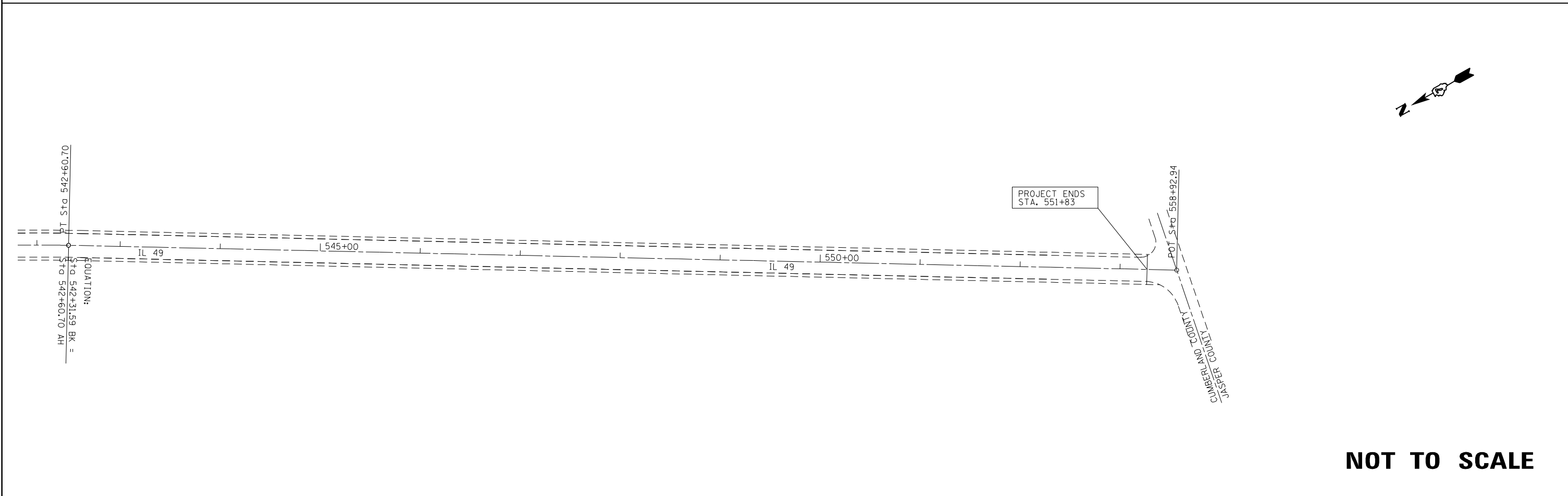
NOT TO SCALE

| | | | | | | | | | | | |
|---|------------------------------|------------|-----------|---|--------------------|--|---------------|--------------------|--------------|-----------|--|
| FILE NAME = | USER NAME = Mono.Steffen | DESIGNED - | REVISED - | STATE OF ILLINOIS DEPARTMENT OF TRANSPORTATION | PLAN SHEETS | F.A.P. RTE. | SECTION | COUNTY | TOTAL SHEETS | SHEET NO. | |
| pw:\idot-pw.bentley.com\PWIDOT\Documents\IDOT Offices\District 7\Projects\74A64\CADD\Drawings\Drawings\74A64-shr-plan.dgn | PLOT SCALE = 100.0000' / in. | CHECKED - | REVISED - | | | 832 | (111.112)R5-3 | CUMBERLAND | 18 | 11 | |
| Default | PLOT DATE = 12/15/2023 | DATE - | REVISED - | | | SHEET OF SHEETS STA. 504+00 TO STA. 534+00 | | CONTRACT NO. 74A64 | | | |
| | | | | | | ILLINOIS FED. AID PROJECT | | | | | |



EXIST. CURVE CUR003
 PI STA. = 537+35.73
 Δ = 30° 18' 34" (RT)
 D = 2° 58' 58"
 R = 1,920.81'
 T = 520.24'
 L = 1,016.11'
 E = 69.21'
 e = -----
 T.R. = -----
 S.E. RUN = -----
 P.C. STA. = 532+15.48
 P.T. STA. = 542+60.70

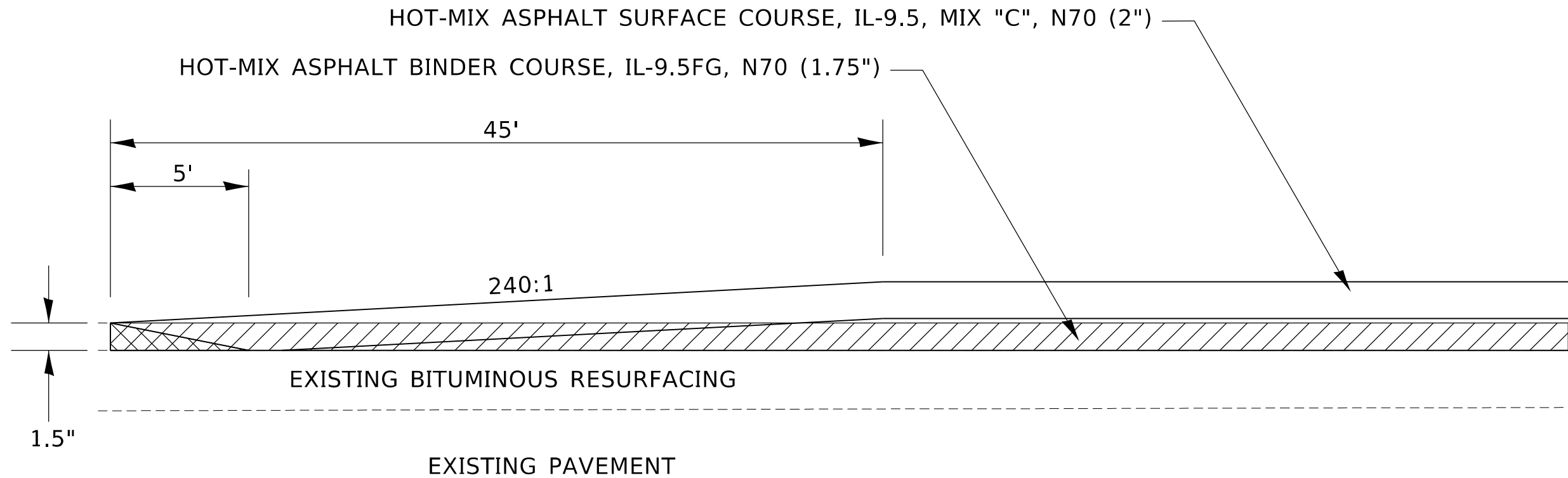
NOT TO SCALE

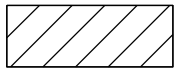
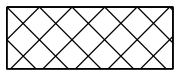


NOT TO SCALE

| | | | | | | | | | | | |
|--|------------------------------|------------|-----------|---|--------------------|---------------------------|---------------|------------|--------------|-----------|--|
| FILE NAME = | USER NAME = Mono.Steffen | DESIGNED - | REVISED - | STATE OF ILLINOIS DEPARTMENT OF TRANSPORTATION | PLAN SHEETS | F.A.P. RTE. | SECTION | COUNTY | TOTAL SHEETS | SHEET NO. | |
| pw:\idot-pw\bentley.com\PWIDOT\Documents\IDOT Offices\District 7\Projects\74A64\CAD\Drawings\Drawings\74A64-sht-plan.dgn | DRAWN | REVISED - | REVISED - | | | 832 | (111.112)R5-3 | CUMBERLAND | 18 | 12 | |
| Default | PLOT SCALE = 100.0000' / in. | CHECKED - | REVISED - | | | CONTRACT NO. 74A64 | | | | | |
| | PLOT DATE = 12/15/2023 | DATE - | REVISED - | | | ILLINOIS FED. AID PROJECT | | | | | |

SHEET OF SHEETS STA. 530+00 TO STA. 553+46



-  HOT-MIX ASPHALT SURFACE REMOVAL, 1 1/2"
-  TEMPORARY RAMP

PROJECT LIMIT PAVING DETAIL

MODEL: Default
 FILE NAME: p:\subject-pw-bentley.com\PW\DOT\Documents\DOT Office\District 7\Project\74A64\CADD\DATA\CAD\Sheet\74A64-11-13.dwg and_stippling.dgn

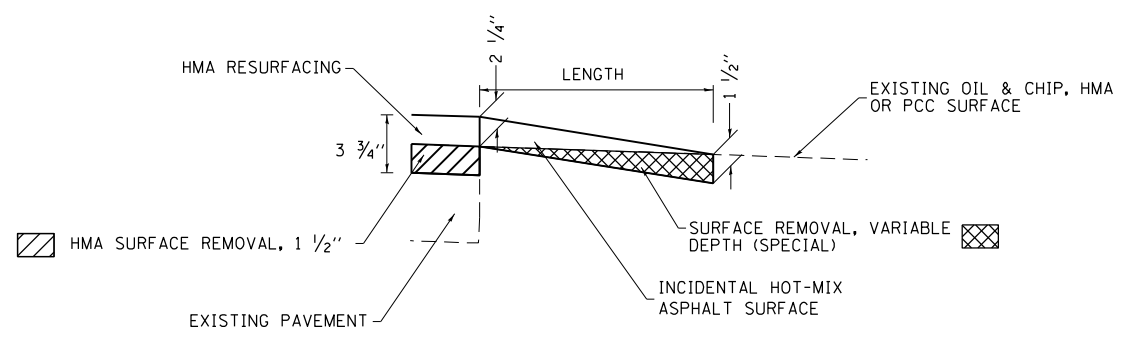
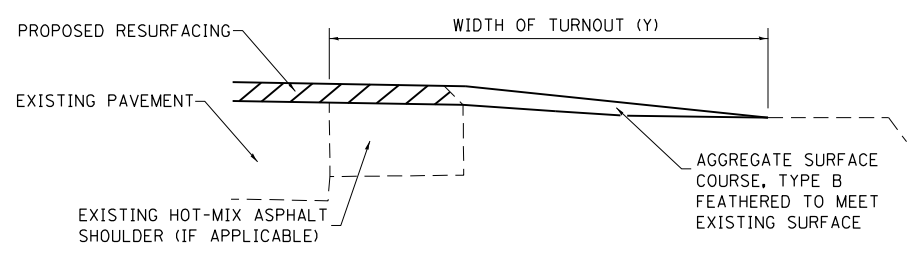
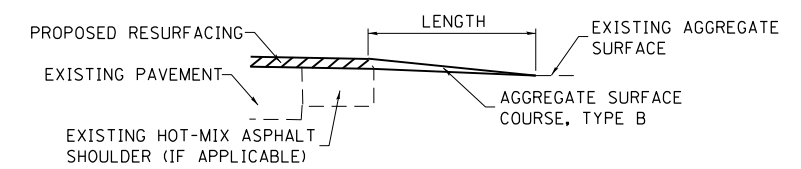
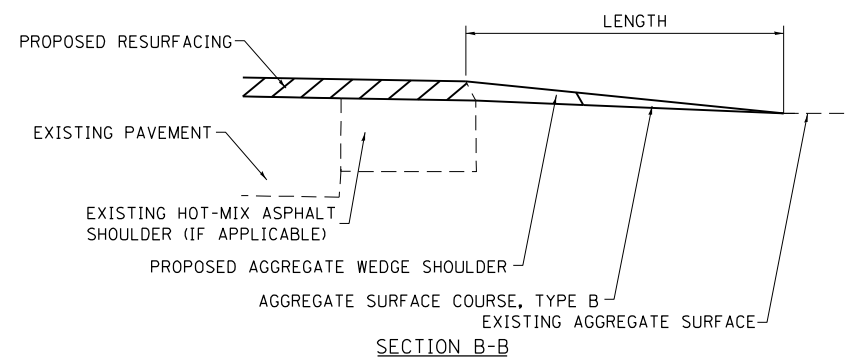
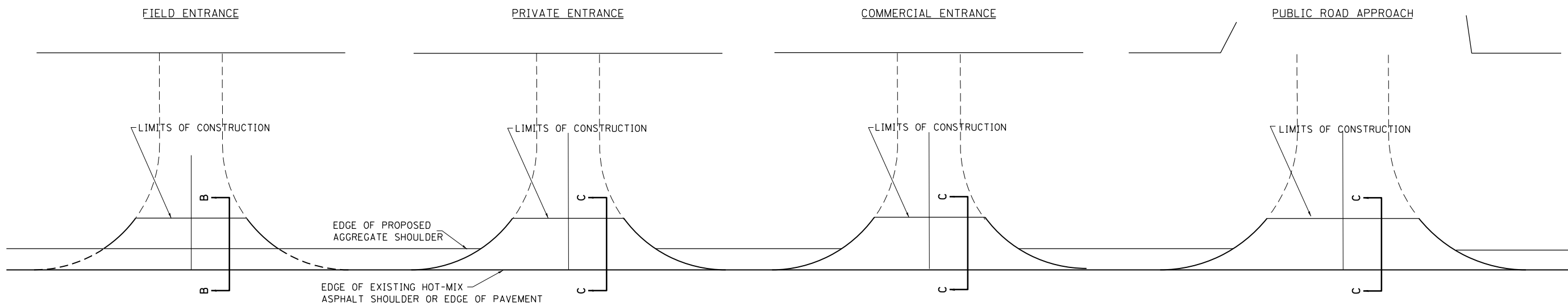
| | | |
|-------------------------------|------------|-----------|
| USER NAME = Mona.Steffen | DESIGNED - | REVISED - |
| | DRAWN - | REVISED - |
| PLOT SCALE = 100,0000 ' / in. | CHECKED - | REVISED - |
| PLOT DATE = 12/15/2023 | DATE - | REVISED - |

**STATE OF ILLINOIS
DEPARTMENT OF TRANSPORTATION**

PAVING DETAILS

SCALE: SHEET OF SHEETS STA. TO STA.

| | | | | |
|--------------------|---------------|------------|---------------------------|-----------|
| F.A.P. RTE. | SECTION | COUNTY | TOTAL SHEETS | SHEET NO. |
| 832 | (111,112)RS-3 | CUMBERLAND | 18 | 13 |
| CONTRACT NO. 74A64 | | | ILLINOIS FED. AID PROJECT | |



TYPICAL SECTION AT MAILBOX TURNOUT

NOTE: SEE STANDARD 406201 FOR MAILBOX TURNOUT DETAILS

NOTES

LENGTH = 10' UNLESS OTHERWISE NOTED ON PLANS

IF THERE IS NOT EXISTING HOT-MIX ASPHALT SHOULDER THEN THE ENTRANCE TAPER STARTS AT THE EDGE OF EXISTING PAVEMENT.

MODEL: Default
FILE: Mailbox Turnout.dwg
PROJECT: 174A64 (C:\Users\stevenc\OneDrive\Documents\DOT Office\Drawings\174A64\Drawings\174A64.dwg)

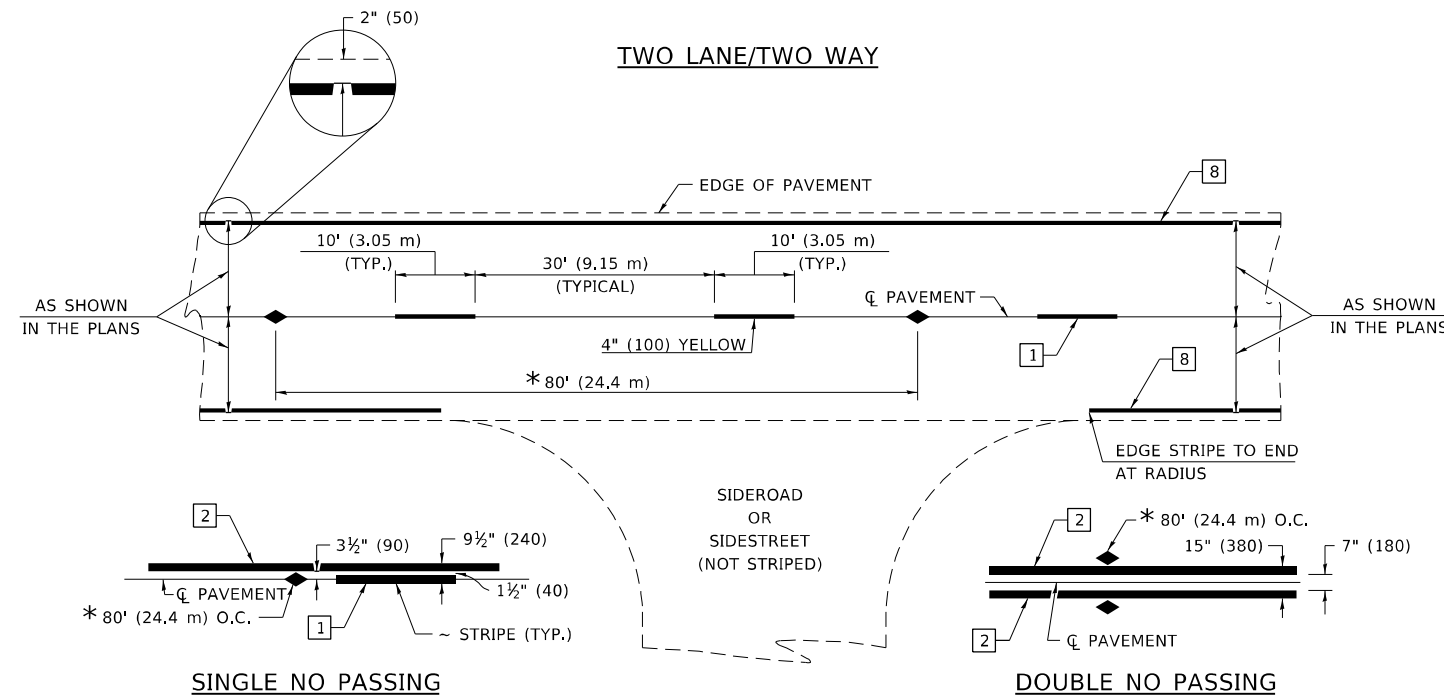
| | | |
|------------------------------|------------|-----------|
| USER NAME = Mona.Steffen | DESIGNED - | REVISED - |
| | DRAWN - | REVISED - |
| PLOT SCALE = 100,0000' / in. | CHECKED - | REVISED - |
| PLOT DATE = 12/15/2023 | DATE - | REVISED - |

**STATE OF ILLINOIS
DEPARTMENT OF TRANSPORTATION**

**RURAL ENTRANCE AND MAILBOX TURNOUT DETAILS
WITH SHOULDERS**

SCALE: SHEET OF SHEETS STA. TO STA.

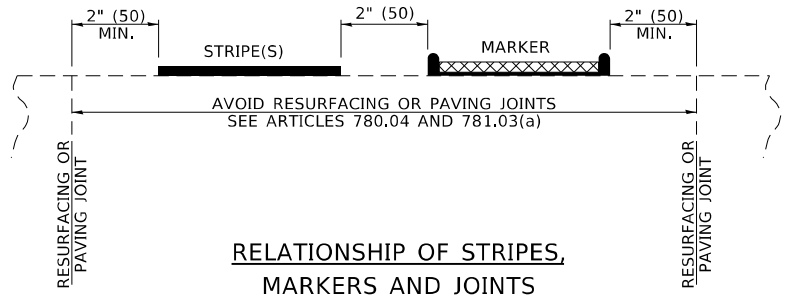
| | | | | |
|---------------------------|---------------|------------|--------------|-----------|
| F.A.P. RTE. | SECTION | COUNTY | TOTAL SHEETS | SHEET NO. |
| 832 | (111,112)RS-3 | CUMBERLAND | 18 | 14 |
| CONTRACT NO. 74A64 | | | | |
| ILLINOIS FED. AID PROJECT | | | | |



* REDUCE TO 40' (12.2 m) O.C. ON CURVES WITH POSTED OR ADVISORY SPEEDS OF 45 mph (70 km/h) OR LESS.

PAVEMENT MARKING LEGEND

- 1 4" (100) SKIP-DASH (YELLOW)
- 2 4" (100) SOLID (YELLOW)
- 3 12" (300) DIAGONAL (YELLOW)
- 4 4" (100) DOUBLE YELLOW (NARROW)
- 5 12" (300) SOLID WHITE
- 6 RESERVED
- 7 6" (150) SKIP-DASH (WHITE)
- 8 4" (100) SOLID (WHITE)
- 9 12" (300) DIAGONAL (WHITE)
- 10 6" (150) SOLID (WHITE)
- 11 24" (600) STOP BAR (WHITE)
- 12 8" (200) SOLID (WHITE)
- 13 4" (100) PARKING WHITE

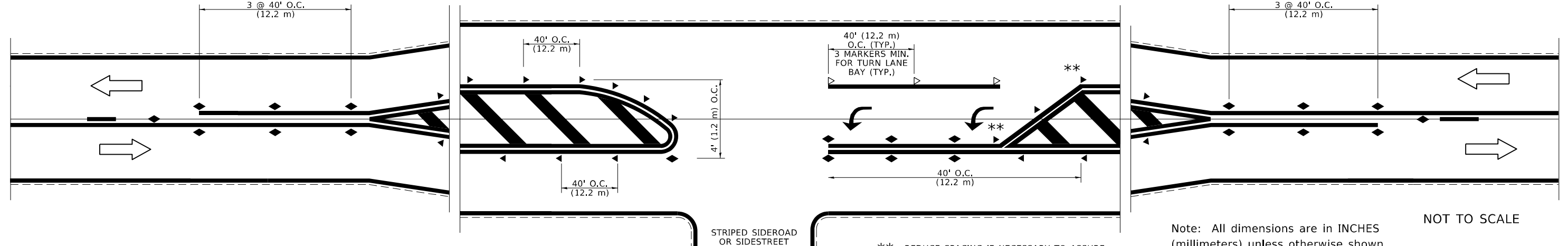


RELATIONSHIP OF STRIPES, MARKERS AND JOINTS

TYPICAL PAVEMENT MARKERS LEGEND

- ◆ TWO-WAY AMBER MARKER
- ▶ ONE-WAY AMBER MARKER
- ▷ ONE-WAY CRYSTAL MARKER

RAISED REFLECTIVE PAVEMENT MARKERS



** REDUCE SPACING IF NECESSARY TO ASSURE MARKERS AT CORNER POINTS.

Note: All dimensions are in INCHES (millimeters) unless otherwise shown. NOT TO SCALE

MODEL: Default FILE NAME: p:\ultra-pw-bentley.com\PW\DOT\Documents\DOT Office\District 7\Projects\74A64\CADD\data\CAD\sheet\74A64-let-detail-and-striping.dgn

| | | |
|------------------------------|------------|-----------|
| USER NAME = Mona.Steffen | DESIGNED - | REVISED - |
| DRAWN - | REVISOR - | REVISOR - |
| PLOT SCALE = 100,0000' / in. | CHECKED - | REVISOR - |
| PLOT DATE = 12/15/2023 | DATE - | REVISOR - |

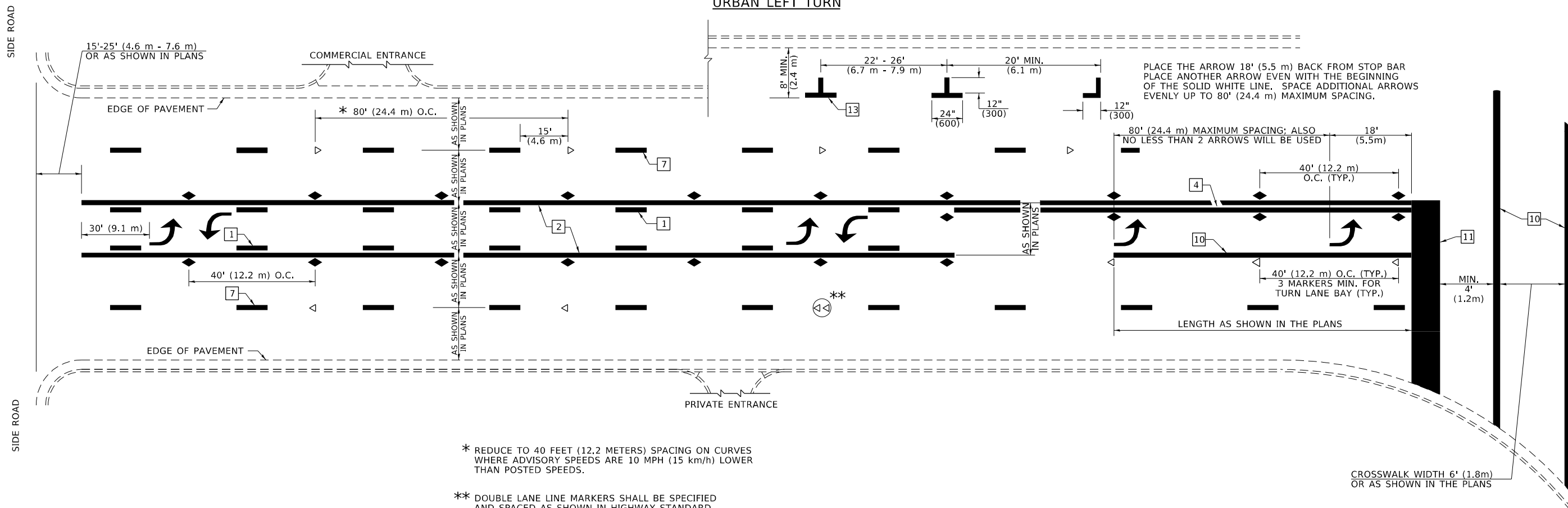
STATE OF ILLINOIS
DEPARTMENT OF TRANSPORTATION

PAVEMENT MARKING AND RAISED REFLECTIVE PAVEMENT MARKERS
(RURAL AND URBAN APPLICATIONS)

| | | | | |
|-------------------------------|---------------|------------|--------------|-----------|
| DISTRICT 7 DETAIL NO. 7800001 | | | | |
| F.A.P. RTE. | SECTION | COUNTY | TOTAL SHEETS | SHEET NO. |
| 832 | (111,112)RS-3 | CUMBERLAND | 18 | 15 |
| CONTRACT NO. 74A64 | | | | |
| ILLINOIS FED. AID PROJECT | | | | |

SCALE: SHEET 1 OF 4 SHEETS STA. TO STA.

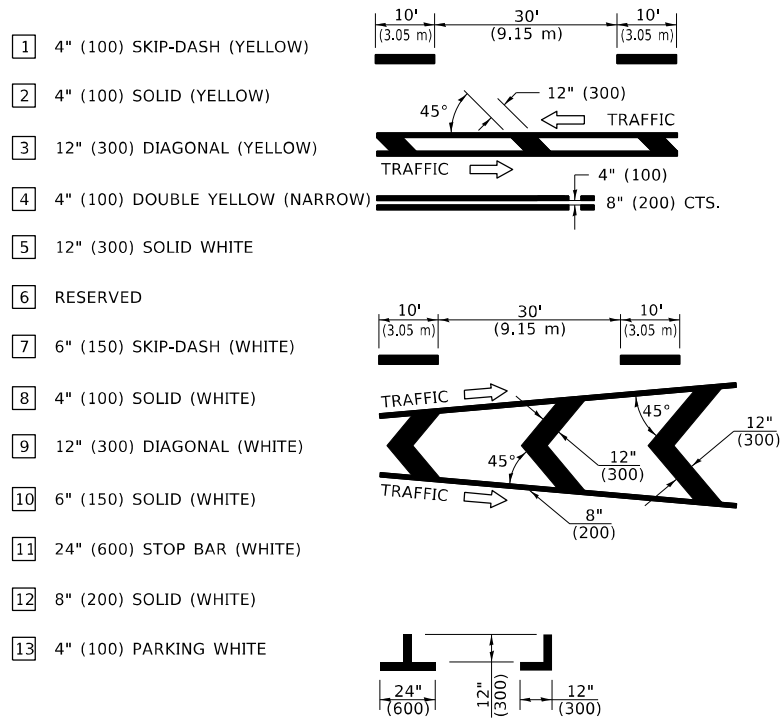
URBAN LEFT TURN



* REDUCE TO 40 FEET (12.2 METERS) SPACING ON CURVES WHERE ADVISORY SPEEDS ARE 10 MPH (15 km/h) LOWER THAN POSTED SPEEDS.

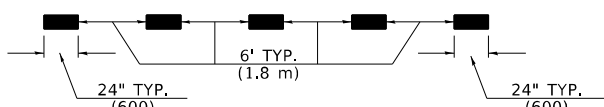
** DOUBLE LANE LINE MARKERS SHALL BE SPECIFIED AND SPACED AS SHOWN IN HIGHWAY STANDARD 781001 FOR MULTI-LANE DIVIDED AND UNDIVIDED HIGHWAYS.

PAVEMENT MARKING LEGEND

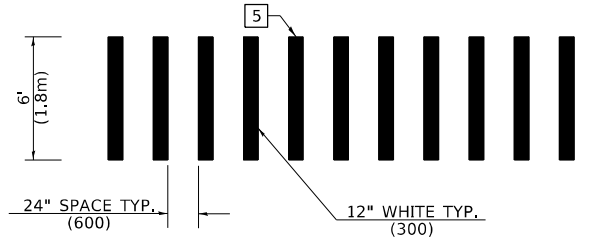


GENERAL NOTES

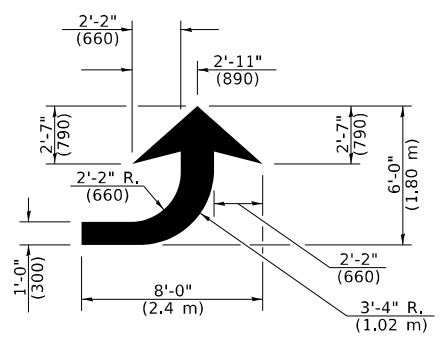
- TURN ARROW PAIRS SHALL BE PLACED AT 250'(75 m) INTERVALS AND SHALL BE EVENLY SPACED BETWEEN BOTH ENDS OF THE BIDIRECTIONAL LEFT TURN LANE. USE A MINIMUM OF TWO PAIRS PER BLOCK.
- THE SOLID YELLOW PAVEMENT MARKINGS [2] SHOULD GENERALLY START OR END NEAR THE RADIUS POINT OF EACH STREET RETURN EXCEPT WHERE ONE OR BOTH ENDS WOULD INCLUDE STOP BARS.
- THE SKIP-DASH PAVEMENT MARKINGS [1] OR [7] SHOULD BE CENTERED BETWEEN BOTH ENDS OF EACH CITY BLOCK AND SHALL BE PLACED SO THEY LINE UP ACROSS FROM EACH OTHER.
- USE LARGE ARROW SIZE FOR BOTH RURAL AND URBAN LOCATIONS. (SEE LAST PAGE OF SECTION 780x FOR SYMBOLS TABLE)
- LANE LINE EXTENSIONS SHALL BE THE SAME COLOR AND WIDTH AS THE LANE LINE BEING EXTENDED.



LANE LINE EXTENSIONS

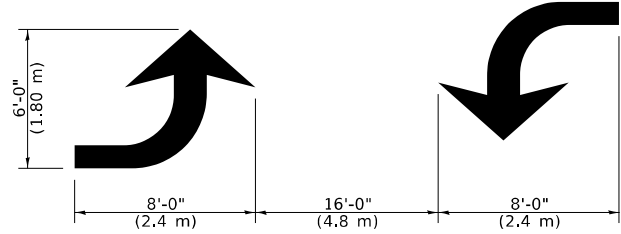


CROSSWALK DETAIL (DECATUR CITY LIMITS ONLY)



LEFT ARROW

REVERSE FOR RIGHT ARROW
AREA = 15.6 SQ. FT. (1.47 m²)
(WHITE)



TYPICAL DOUBLE TURN ARROWS (WHITE)

Note: All dimensions are in INCHES (millimeters) unless otherwise shown.

NOT TO SCALE

MODEL: Default; FILE: 74A64; PROJECT: 74A64; CADD: 74A64; SHEET: 74A64-1; SHEET TITLE: PAVEMENT MARKING AND RAISED REFLECTIVE PAVEMENT MARKERS (RURAL AND URBAN APPLICATIONS); PROJECT: DISTRICT 7 DETAIL NO. 7800001; DATE: 12/15/2023

| | | |
|-------------------------------|------------|-----------|
| USER NAME = Mona.Steffen | DESIGNED - | REVISED - |
| | DRAWN - | REVISED - |
| PLOT SCALE = 100,0000 ' / in. | CHECKED - | REVISED - |
| PLOT DATE = 12/15/2023 | DATE - | REVISED - |

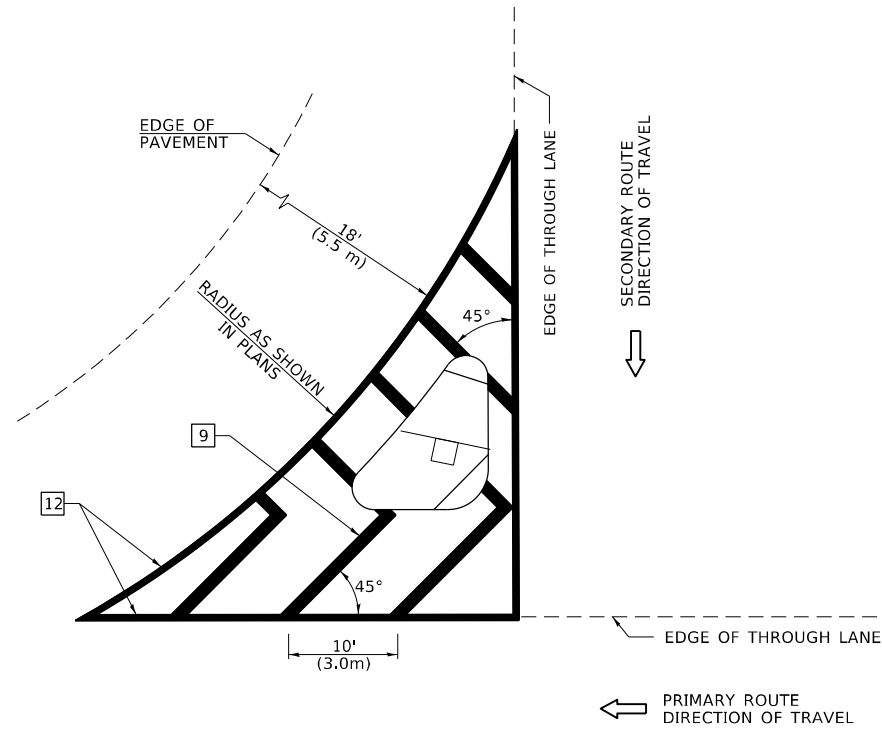
STATE OF ILLINOIS
DEPARTMENT OF TRANSPORTATION

PAVEMENT MARKING AND RAISED REFLECTIVE PAVEMENT MARKERS
(RURAL AND URBAN APPLICATIONS)

SCALE: SHEET 2 OF 4 SHEETS STA. TO STA.

| | | | | |
|-------------------------------|---------------|------------|--------------|-----------|
| DISTRICT 7 DETAIL NO. 7800001 | | | | |
| F.A.P. RTE. | SECTION | COUNTY | TOTAL SHEETS | SHEET NO. |
| 832 | (111,112)RS-3 | CUMBERLAND | 18 | 16 |
| CONTRACT NO. 74A64 | | | | |
| ILLINOIS FED. AID PROJECT | | | | |

ISLAND

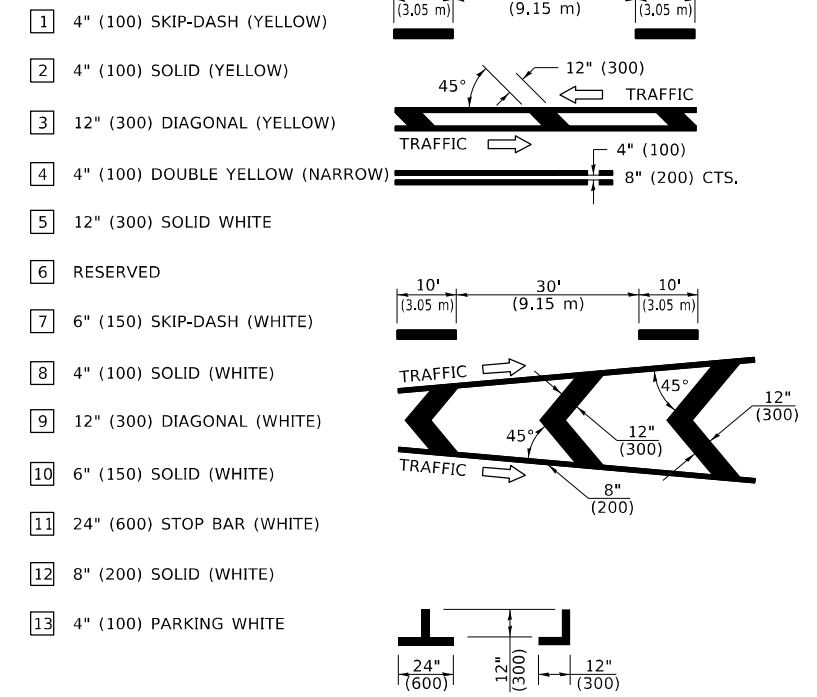


GENERAL NOTES

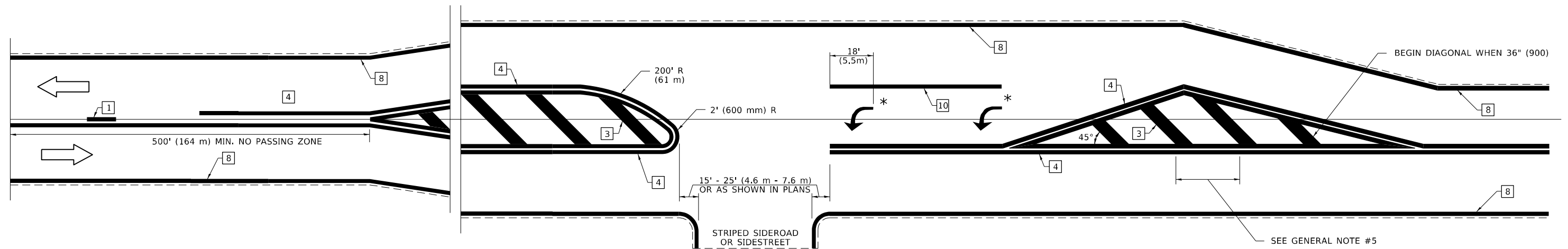
1. RAISED AND CORRUGATED MEDIANS SHALL BE OUTLINED WITH [2] IF PRESENT.
2. SOME OF THE INFORMATION INCLUDED WITH THIS DETAIL MAY NOT BE APPLICABLE TO THIS IMPROVEMENT.
3. PAVEMENT MARKINGS ARE TO BE EXTENDED THROUGH OMISSIONS WHEN APPLICABLE.
4. FINAL PAVEMENT MARKINGS SHALL BE IN PLACE PRIOR TO PLACING ANY RAISED REFLECTIVE PAVEMENT MARKERS.
5. THE FOLLOWING CRITERIA SHALL BE USED FOR SELECTING THE DIAGONAL PAVEMENT MARKING SPACING:

| | |
|------------------------|-------------|
| <30 MPH (<50 km/h) | 15' (4.5 m) |
| 30-45 MPH (50-75 km/h) | 20' (6.0 m) |
| >45 MPH (>75 km/h) | 30' (9.0 m) |

PAVEMENT MARKING LEGEND



RURAL LEFT TURN STRIPING



* PLACE AN ARROW 18' (5.5 m) BACK FROM STOP BAR. PLACE ANOTHER ARROW EVEN WITH THE BEGINNING OF THE SOLID WHITE LINE. SPACE ADDITIONAL ARROWS EVENLY UP TO 80' (24.4 m) MAXIMUM SPACING. USE MINIMUM OF 2 ARROWS.

Note: All dimensions are in INCHES (millimeters) unless otherwise shown.

NOT TO SCALE

MODEL: Default FILE NAME: p:\ultra-cw-bentley.com\PIV\DOT\Documents\DOT Office\Dir\er: 7\Project\7464\CADD\DATA\CAD\Sheet\DOT 7464-LeftDetail and Striping.dgn

| | | |
|------------------------------|------------|-----------|
| USER NAME = Mona.Steffen | DESIGNED - | REVISED - |
| PLOT SCALE = 100,0000' / in. | DRAWN - | REVISED - |
| PLOT DATE = 12/15/2023 | CHECKED - | REVISED - |
| | DATE - | REVISED - |

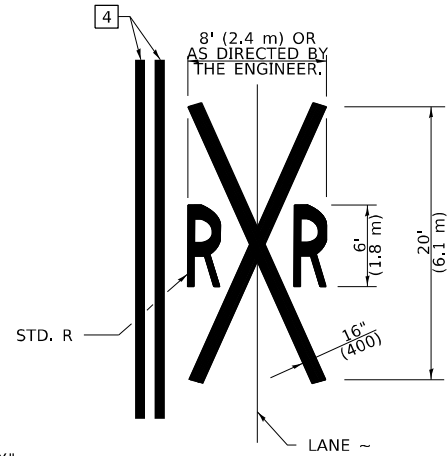
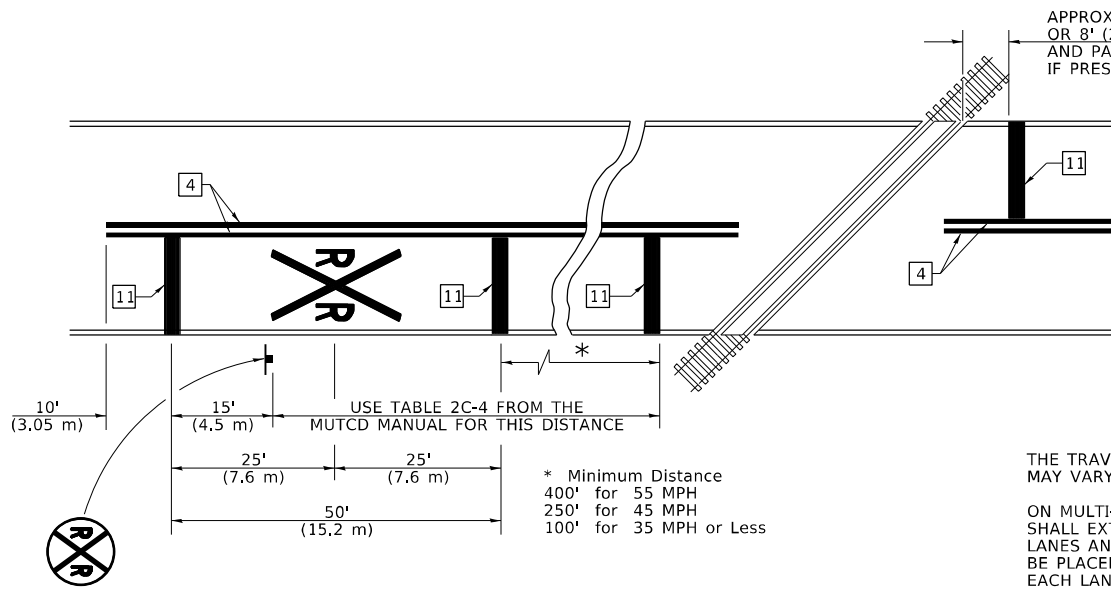
**STATE OF ILLINOIS
DEPARTMENT OF TRANSPORTATION**

**PAVEMENT MARKING AND RAISED REFLECTIVE PAVEMENT MARKERS
(RURAL AND URBAN APPLICATIONS)**

SCALE: SHEET 3 OF 4 SHEETS STA. TO STA.

| | | | | |
|-------------------------------|---------------|------------|--------------|-----------|
| DISTRICT 7 DETAIL NO. 7800001 | | | | |
| F.A.P. RTE. | SECTION | COUNTY | TOTAL SHEETS | SHEET NO. |
| 832 | (111,112)RS-3 | CUMBERLAND | 18 | 17 |
| CONTRACT NO. 74A64 | | | | |
| ILLINOIS FED. AID PROJECT | | | | |

PAVEMENT MARKINGS AT RAILROAD-HIGHWAY GRADE CROSSING



NOTES

THE TRAVERSE SPREAD OF THE "X" MAY VARY ACCORDING TO LANE WIDTH.

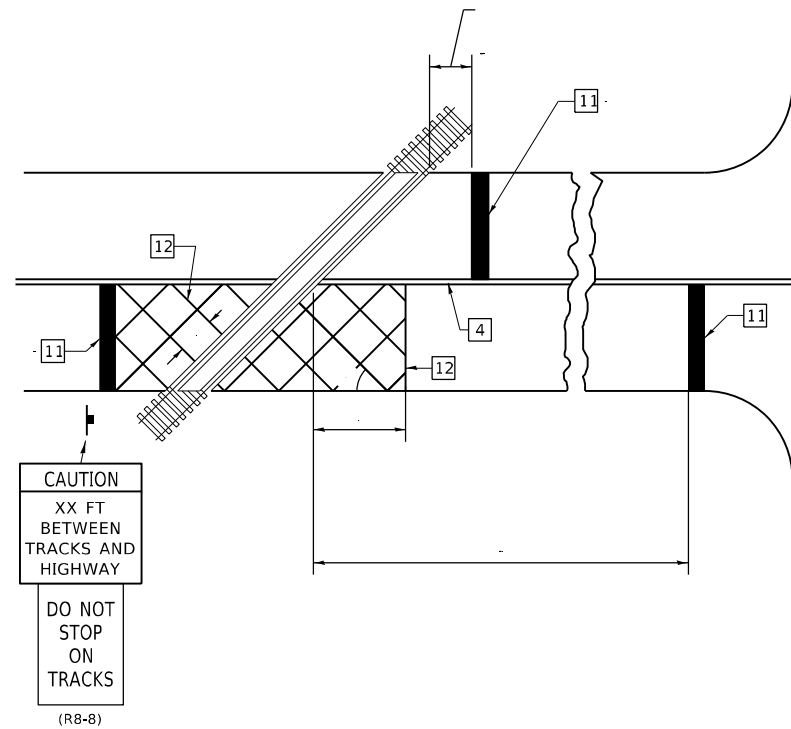
ON MULTI-LANE ROADS, THE STOP LINES SHALL EXTEND ACROSS ALL APPROACH LANES AND SEPARATE RXR SYMBOLS SHALL BE PLACED ADJACENT TO EACH OTHER IN EACH LANE.

WHEN THE PAVEMENT MARKING SYMBOL IS USED, A PORTION OF THE SYMBOL SHOULD BE LOCATED DIRECTLY ADJACENT TO THE ADVANCE WARNING SIGN (W10-1) AS PLACED BY TABLE II-1, CONDITION B OF THE MUTCD.

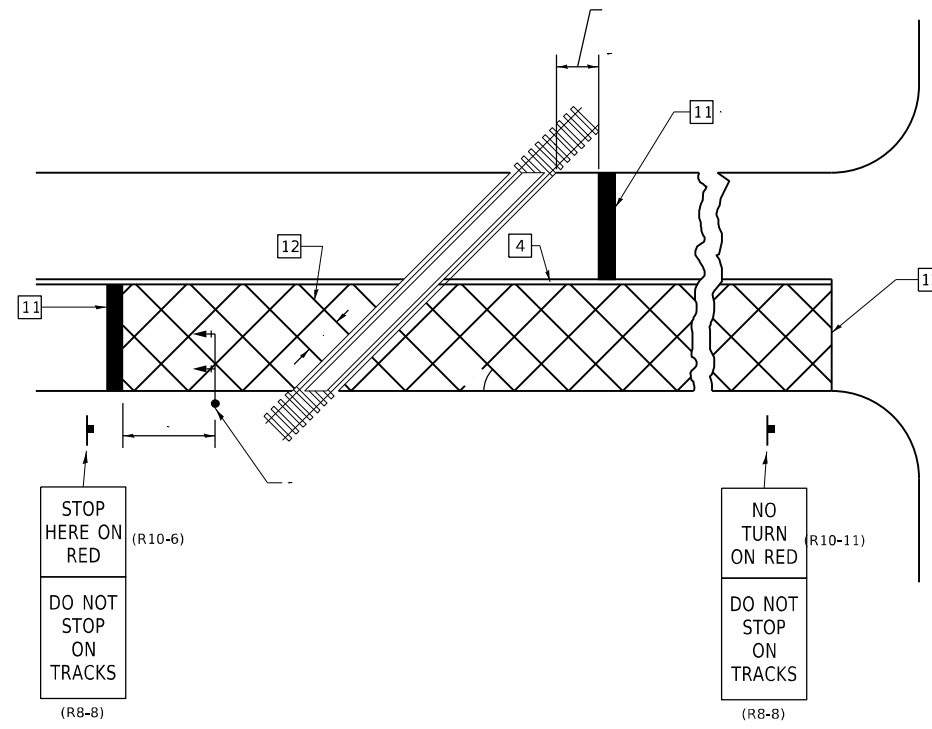
PAVEMENT MARKING LEGEND

- 1 4" (100) SKIP-DASH (YELLOW)
 - 2 4" (100) SOLID (YELLOW)
 - 3 12" (300) DIAGONAL (YELLOW)
 - 4 4" (100) DOUBLE YELLOW (NARROW)
 - 5 12" (300) SOLID WHITE
 - 6 RESERVED
 - 7 6" (150) SKIP-DASH (WHITE)
 - 8 4" (100) SOLID (WHITE)
 - 9 12" (300) DIAGONAL (WHITE)
 - 10 6" (150) SOLID (WHITE)
 - 11 24" (600) STOP BAR (WHITE)
 - 12 8" (200) SOLID (WHITE)
 - 13 4" (100) PARKING WHITE
-

RAILROAD CROSSING WITH INTERCONNECT ONLY



RAILROAD CROSSING WITH INTERCONNECT AND PRE-SIGNALS



GENERAL NOTES

- SUPPLEMENTAL PAVEMENT MARKINGS TO BE INSTALLED ONLY ON APPROACHES TO INTERSECTIONS CONTROLLED BY TRAFFIC SIGNALS WHICH ARE INTERCONNECTED WITH THE RAILROAD WARNING SIGNALS.
- EXTEND PAVEMENT MARKINGS TO THE INTERSECTION ONLY WHERE NEAR-SIDE TRAFFIC SIGNALS ARE USED.

SUPPLEMENTAL PAVEMENT MARKING TREATMENT FOR RAILROAD-HIGHWAY GRADE CROSSING

Note: All dimensions are in INCHES (millimeters) unless otherwise shown.

NOT TO SCALE

STATE OF ILLINOIS
DEPARTMENT OF TRANSPORTATION

PAVEMENT MARKING AND RAISED REFLECTIVE PAVEMENT MARKERS
(RURAL AND URBAN APPLICATIONS)

SCALE: SHEET 4 OF 4 SHEETS STA. TO STA.

DISTRICT 7 DETAIL NO. 7800001

| F.A.P. RTE. | SECTION | COUNTY | TOTAL SHEETS | SHEET NO. |
|---------------------------|---------------|------------|--------------------|-----------|
| 832 | (111,112)RS-3 | CUMBERLAND | 18 | 18 |
| | | | CONTRACT NO. 74A64 | |
| ILLINOIS FED. AID PROJECT | | | | |