

STATE OF ILLINOIS
DEPARTMENT OF TRANSPORTATION

F.A.P. RTE.	SECTION	COUNTY	TOTAL SHEETS	SHEET NO.
320	(101)RS-4	MACON	21	1
		ILLINOIS	CONTRACT NO. 74C17	

FOR INDEX OF SHEETS, SEE SHEET NO. 2

PROPOSED HIGHWAY PLANS

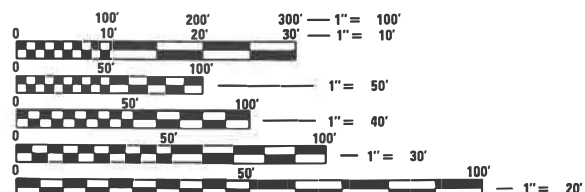
FAP ROUTE 320 (IL 121)
SECTION (101)RS-4
PROJECT NHPP-VDDZ(503)
STANDARD OVERLAY
MACON COUNTY

C-97-067-23

D-97-061-23



ADT = 4,750 TO 6,200 (2021)
FUNCTIONAL CLASSIFICATION - OTHER PRINCIPAL ARTERIAL



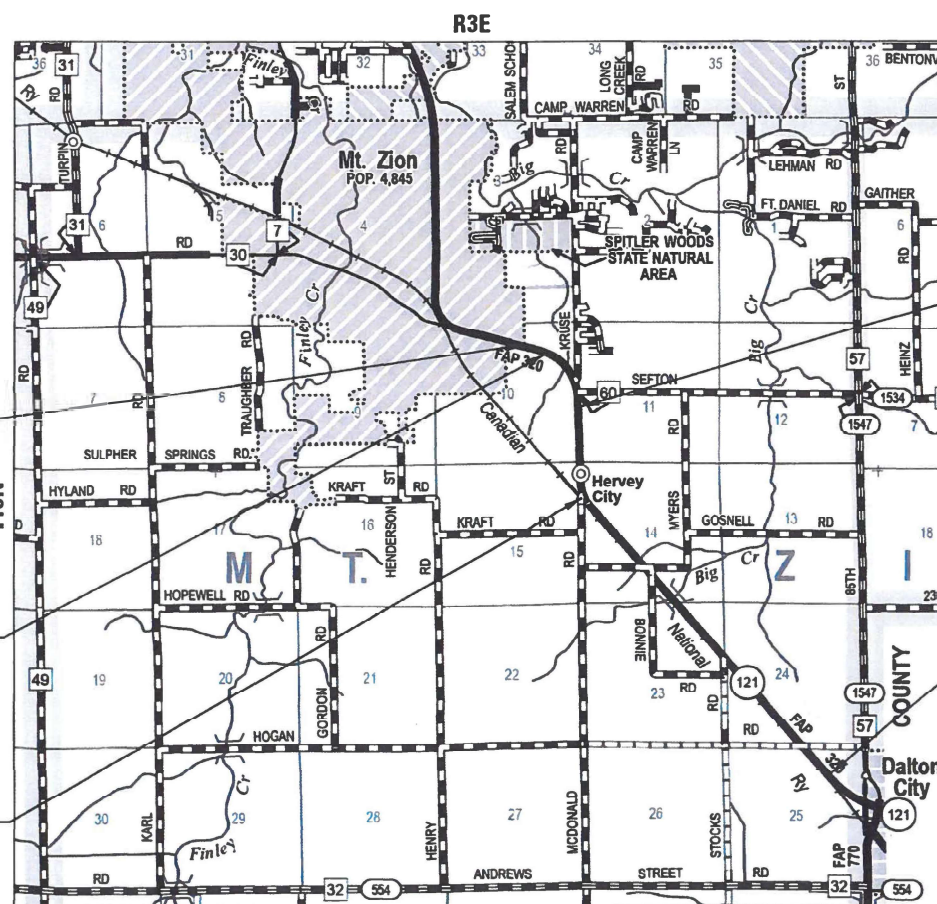
FULL SIZE PLANS HAVE BEEN PREPARED USING STANDARD ENGINEERING SCALES. REDUCED SIZED PLANS WILL NOT CONFORM TO STANDARD SCALES. IN MAKING MEASUREMENTS ON REDUCED PLANS, THE ABOVE SCALES MAY BE USED.

J.U.L.I.E.
JOINT UTILITY LOCATION INFORMATION FOR EXCAVATORS
1-800-892-0123
OR 811

PROJECT ENDS
STA 273 + 65

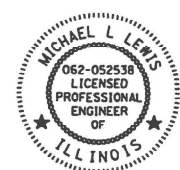
STATION EQUATION
STA 264 + 13.49BK =
STA 265 + 85.36AH

URBAN STA 202 + 00.00
RURAL STA 202 + 00.00

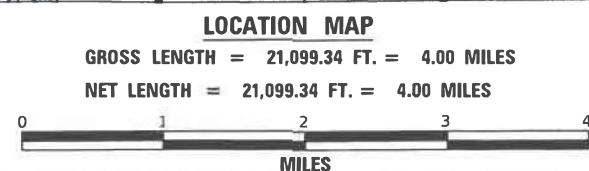


STATION EQUATION
STA 236 + 89.79BK =
STA 236 + 73.58AH

PROJECT BEGINS
STA 61 + 10.00



SIGNATURE: *Michael L. Lewis*
EXPIRES: 11/30/2025
DATE: 12/11/2023



IDOT PROJECT ENGINEER: MATT BOWER
CONSULTANT PROJECT MANAGER: MIKE LEWIS
PHONE NUMBER: (217)342-8359
CONTRACT NO. 74C17

STATE OF ILLINOIS
DEPARTMENT OF TRANSPORTATION

SUBMITTED DECEMBER 13 20 23
Jeffrey P. Myrland
REGIONAL ENGINEER

February 2, 2024
Steph M. Lewis
ENGINEER OF DESIGN AND ENVIRONMENT

February 2, 2024
Steph M. Lewis
DIRECTOR OF HIGHWAYS PROJECT IMPLEMENTATION

PRINTED BY THE AUTHORITY
OF THE STATE OF ILLINOIS

INDEX OF SHEETS

- 1 COVER SHEET
- 2 INDEX OF SHEETS, HIGHWAY STANDARDS AND GENERAL NOTES
- 3-5 SUMMARY OF QUANTITIES
- 6 TYPICAL SECTIONS
- 7-11 SCHEDULE OF QUANTITIES
- 12-15 PLAN SHEETS
- 16 RURAL ENTRANCE AND MAILBOX TURNOUT DETAIL
- 17 PAVING TRANSITION DETAIL
- 18-21 PAVEMENT MARKING AND RAISED REFLECTIVE PAVEMENT MARKERS DISTRICT 7 DETAIL NO. 78000001

THE FOLLOWING STANDARDS ARE A PART OF THESE PLANS AND ARE INCLUDED AFTER SHEET NO 21

HIGHWAY STANDARDS

- 000001-08 STANDARD SYMBOLS, ABBREVIATIONS AND PATTERNS
- 001006 DECIMAL OF AN INCH AND OF A FOOT
- 406201-01 MAILBOX TURNOUT
- 442201-03 CLASS C AND D PATCHES
- 630001-13 STEEL PLATE BEAM GUARDRAIL
- 630101-11 STRONG POST GUARDRAIL ATTACHED TO CULVERT
- 642006-01 SHOULDER RUMBLE STRIPS, 8 IN.
- 667101-02 PERMANENT SURVEY MARKERS
- 701001-02 OFF-RD OPERATIONS, 2L, 2W, MORE THAN 15' (4.5m) AWAY
- 701006-05 OFF-RD OPERATIONS, 2L, 2W, 15' (4.5m) TO 24" (600mm) FROM PAVEMENT EDGE
- 701011-04 OFF-RD MOVING OPERATIONS, 2L, 2W, DAY ONLY
- 701201-05 LANE CLOSURE, 2L, 2W, DAY ONLY, FOR SPEEDS ≥ 45 MPH
- 701301-04 LANE CLOSURE, 2L, 2W, SHORT TIME OPERATIONS
- 701306-04 LANE CLOSURE, 2L, 2W, SLOW MOVING OPERATIONS DAY ONLY, FOR SPEEDS ≥ 45 MPH
- 701311-03 LANE CLOSURE, 2L, 2W, MOVING OPERATIONS - DAY ONLY
- 701901-09 TRAFFIC CONTROL DEVICES
- 725001-01 OBJECT AND TERMINAL MARKERS
- 780001-05 TYPICAL PAVEMENT MARKINGS
- 781001-04 TYPICAL APPLICATIONS RAISED REFLECTIVE PAVEMENT MARKERS
- 782006-01 GUARDRAIL AND BARRIER WALL REFLECTOR MOUNTING DETAILS

GENERAL NOTES

THIS PROJECT IS LOCATED ON FAP ROUTE 320 (IL 121) IN MACON COUNTY FROM 0.2 MILE EAST OF BURGNER DRIVE IN MT ZION TO 0.4 MILES WEST OF IL 128. THE WORK CONSISTS OF PAVEMENT PATCHING, MILLING, HOT-MIX ASPHALT RESURFACING, HOT-MIX ASPHALT SHOULDERS, AGGREGATE WEDGE SHOULDERS, PAVEMENT MARKING, RUMBLE STRIPS, AND ANY OTHER WORK NECESSARY TO COMPLETE THIS SECTION.

THE MATERIAL USED FOR AGGREGATE WEDGE SHOULDER, TYPE B SHALL BE CRUSHED STONE OR CRUSHED CONCRETE.

THE MATERIAL USED FOR AGGREGATE SURFACE COURSE, TYPE B SHALL BE CRUSHED STONE OR CRUSHED CONCRETE.

THE FOLLOWING RATES OF APPLICATION HAVE BEEN USED IN CALCULATING PLAN QUANTITIES:

- HOT-MIX ASPHALT..... 112 LB / SQ YD / IN
- BITUMINOUS MATERIALS (TACK COAT)..... 0.05 LB / SQ FT (ON MILLED HMA)
- BITUMINOUS MATERIALS (TACK COAT)..... 0.025 LB / SQ FT (ON HMA BINDER LIFT)
- GRANULAR MATERIAL..... 2.05 TONS / CU YD

LONGITUDINAL JOINT SEALANT SHALL BE PLACED ON TOP OF THE POLYMERIZED HOT-MIX ASPHALT BINDER COURSE, IL-9.5FG, N90

THE FOLLOWING MIXTURE REQUIREMENTS ARE APPLICABLE TO THIS PROJECT:

LOCATION(S)	MIXTURE USE(S)	PG	DESIGN AIR VOIDS	MIXTURE COMPOSITION	FRICTION AGGREGATE	MIXTURE WEIGHT	QUALITY MANAGEMENT PROGRAM	SUBLOT SIZE	MATERIAL TRANSFER DEVICE (REQUIRED?)
MAINLINE	POLYMERIZED HMA SURFACE COURSE, IL-9.5, MIX "D", N90	PG 70-22	4.0% @ N=90	IL - 9.5	MIXTURE "D"	N90	QCP	1000	N/A
MAINLINE	POLYMERIZED HMA BINDER COURSE, IL-9.5FG, N90	PG 70-22	4.0% @ N=90	IL - 9.5FG	N/A	N90	QCP	1000	N/A
INCIDENTAL	HMA SURFACE COURSE, IL-9.5, MIX "C", N70	PG 64-22	4.0% @ N=70	IL - 9.5	MIXTURE "C"	N70	QC/QA	3000	N/A
PATCHING	HMA BINDER COURSE, IL-19.0, N90	PG 64-22	4.0% @ N=90	IL - 19.0	N/A	N90	QC/QA	3000	N/A

MODEL Path: \\s022022060501 - PFB_2014-039_V0 #3 IL 121 C# 74C17-04_Drawing\DCEN\CAD_Sheets\0774C17-04-05-000000.dgn



USER NAME = dreimer	DESIGNED - MLL	REVISED -
PLOT SCALE = 2,0000' / in.	DRAWN - DRR	REVISED -
PLOT DATE = 12/11/2023	CHECKED - RPU	REVISED -
	DATE - 12/11/2023	REVISED -

**STATE OF ILLINOIS
DEPARTMENT OF TRANSPORTATION**

INDEX OF SHEETS, HIGHWAY STANDARDS AND GENERAL NOTES

SCALE: N.T.S. SHEET 1 OF 1 SHEETS STA. TO STA.

F.A.P. RTE.	SECTION	COUNTY	TOTAL SHEETS	SHEET NO.
320	(101)RS-4	MACON	21	2
CONTRACT NO. 74C17				
ILLINOIS FED. AID PROJECT				

SUMMARY OF QUANTITIES			TOTAL QUANTITY	CONSTRUCTION TYPE CODE	
CODE NO.	ITEM	UNIT		MACON	MACON
				80% Fed / 20% State ROADWAY 0005 RURAL	80% Fed / 20% State ROADWAY 0005 URBAN
40200800	AGGREGATE SURFACE COURSE, TYPE B	TON	111	28	83
40600290	BITUMINOUS MATERIALS (TACK COAT)	POUND	50,793	33,970	16,823
40600370	LONGITUDINAL JOINT SEALANT	FOOT	21,100	14,090	7,010
40600990	TEMPORARY RAMP	SQ YD	60	30	30
40603219	POLYMERIZED HOT-MIX ASPHALT BINDER COURSE, IL-9.5FG, N90	TON	5,268	3,523	1,745
40604164	POLYMERIZED HOT-MIX ASPHALT SURFACE COURSE, IL-9.5, MIX "D", N90	TON	6,322	4,228	2,094
40800050	INCIDENTAL HOT-MIX ASPHALT SURFACING	TON	103	65	38
44000155	HOT-MIX ASPHALT SURFACE REMOVAL, 1 1/2"	SQ YD	75,249	50,326	24,923
44201811	CLASS D PATCHES, TYPE I, 14 INCH	SQ YD	15	11	4
44201815	CLASS D PATCHES, TYPE II, 14 INCH	SQ YD	532	278	254
44201819	CLASS D PATCHES, TYPE III, 14 INCH	SQ YD	224	125	99
44201821	CLASS D PATCHES, TYPE IV, 14 INCH	SQ YD	277	223	54
48102100	AGGREGATE WEDGE SHOULDER, TYPE B	TON	1,540	1,029	511
* 63000030	STRONG POST GUARDRAIL ATTACHED TO CULVERT	FOOT	28	28	0

* SPECIALTY ITEM

MODEL: D:\info\h... FILE NAME: 202202202060591 - PTB_2014-039_V0_#3_IL_121_C#_74C1704_Drawing\OPEN\CAD_Sheets\0774C17-rhs-500.dgn



USER NAME = dreimer	DESIGNED - MLL	REVISED -
PLOT SCALE = 2,0000' / in.	DRAWN - DRR	REVISED -
PLOT DATE = 12/11/2023	CHECKED - RPU	REVISED -
	DATE - 12/11/2023	REVISED -

**STATE OF ILLINOIS
DEPARTMENT OF TRANSPORTATION**

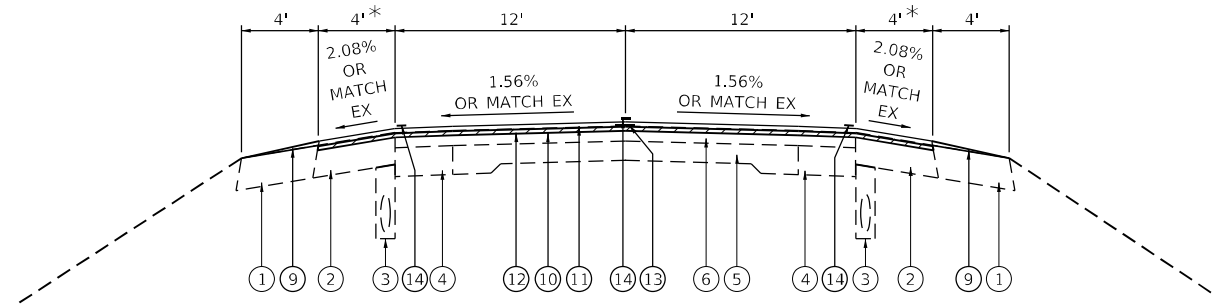
SUMMARY OF QUANTITIES

SCALE: N.T.S. SHEET 1 OF 3 SHEETS STA. TO STA.

F.A.P. RTE. 320	SECTION (101)RS-4	COUNTY MACON	TOTAL SHEETS 21	SHEET NO. 3
CONTRACT NO. 74C17			ILLINOIS FED. AID PROJECT	

LEGEND

- ① EXISTING AGGREGATE SHOULDERS - 9 3/4"
- ② EXISTING BITUMINOUS CONCRETE SHOULDERS - 9 3/4"
- ③ EXISTING PIPE UNDERDRAINS - 6"
- ④ EXISTING BITUMINOUS CONCRETE WIDENING - 9"
- ⑤ EXISTING PCC PAVEMENT 9"-6"-9"
- ⑥ EXISTING BITUMINOUS RESURFACING, 4 3/4"
- ⑦ EXISTING BITUMINOUS SUBBASE, 4"
- ⑧ EXISTING PCC PAVEMENT, 8" STANDARD REINFORCEMENT
- ⑨ PROPOSED AGGREGATE WEDGE SHOULDER, TYPE B
- ⑩ PROPOSED POLYMERIZED HOT-MIX ASPHALT BINDER COURSE, IL-9.5FG, N90, 1 1/4"
- ⑪ PROPOSED POLYMERIZED HOT-MIX ASPHALT SURFACE COURSE, IL-9.5, MIX "D", N90, 1 1/2"
- ⑫ PROPOSED HOT-MIX ASPHALT SURFACE REMOVAL, 1 1/2"
- ⑬ PROPOSED LONGITUDINAL JOINT SEALANT
- ⑭ PROPOSED PAVEMENT MARKING



IL 121 - EXISTING AND PROPOSED TYPICAL SECTION

STA 61+10.00 TO STA 194+59.00

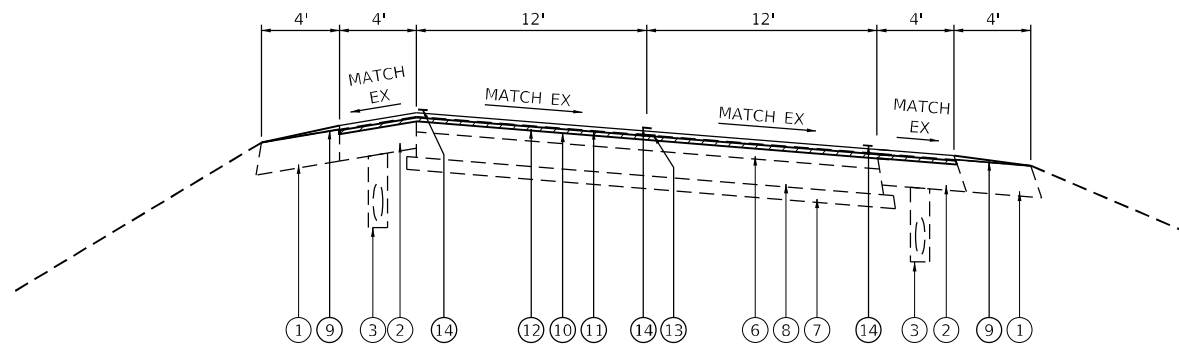
STA 208+77.00 TO STA 236+89.79

STATION EQUATION

STA 264+13.49BK = STA 265+85.36AH

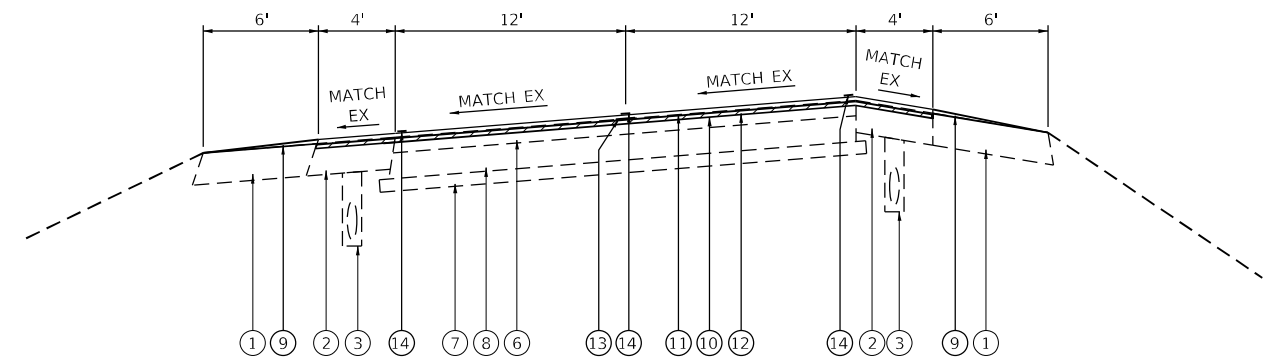
STA 265+85.36 TO STA 273+65.00

* RT STA 148+13 TO 151+32 - SHOULDER = 7.0'
 LT STA 148+40 TO 151+44 - SHOULDER = 7.6'



IL 121 - EXISTING AND PROPOSED TYPICAL SECTION

STA 194+59.00 TO STA 208+77.00



IL 121 - EXISTING AND PROPOSED TYPICAL SECTION

STATION EQUATION

STA 236+89.79BK = STA 236+73.58AH

STA 236+73.58 TO STA 264+13.49

NOTE:
 THE ALGEBRAIC DIFFERENCE BETWEEN THE PAVEMENT
 AND SHOULDER SLOPES SHALL NOT EXCEED 0.08 FT/FT.

MODEL: Default
 FILE NAME: J:\2022\20220605\91 - FTB_204-439_V0 #3 IL 121_C# 74C1704_Drawing\OPEN\CAD_Sheets\0774C17-shs-typrcal.dgn



USER NAME = dreimer	DESIGNED - MLL	REVISED -
DRAWN - DRR	CHECKED - RPU	REVISED -
PLOT SCALE = 10,0000 */ in.	DATE - 12/11/2023	REVISED -
PLOT DATE = 12/11/2023		

**STATE OF ILLINOIS
 DEPARTMENT OF TRANSPORTATION**

TYPICAL SECTIONS

SCALE: 1"=100' SHEET 1 OF 1 SHEETS STA. TO STA.

F.A.P. RTE.	SECTION	COUNTY	TOTAL SHEETS	SHEET NO.
320	(101)RS-4	MACON	21	6
CONTRACT NO. 74C17				
ILLINOIS FED. AID PROJECT				

RESURFACING SCHEDULE													
DESCRIPTION	STATION	TO	STATION	LENGTH	AVERAGE	AREA	BITUMINOUS	LONGITUDINAL	TEMPORARY	POLYMERIZED	POLYMERIZED	HOT-MIX ASPHALT	AGGREGATE
				FOOT	TOTAL	SQ FT	MATERIALS	JOINT SEALANT	RAMP	HOT-MIX ASPHALT	HOT-MIX ASPHALT	HOT-MIX ASPHALT	WEDGE
					WIDTH		(TACK COAT)			BINDER COURSE,	SURFACE COURSE,	SURFACE	SHOULDER,
					FOOT		40600290	40600370	40600990	IL-9.5FG, N90	IL-9.5, MIX "D", N90	REMOVAL, 1 1/2"	TYPE B
										40603219	40604164	44000155	48102100
							POUND	FOOT	SQ YD	TON	TON	SQ YD	TON
(RURAL)													
AFTER MILLING	61+10.00	TO	61+15.00	5.0	32.0	160.0			17.8				
AFTER BINDER CSE	61+10.00	TO	61+13.30	3.3	32.0	105.6			11.7				
	61+10.00	TO	148+13.00	8,703.0	32.0	278,496.0	20,887.2	8,703.0		2,166.1	2,599.3	30,944.0	654.1
	148+13.00	TO	148+40.00	27.0	35.0	945.0	70.9	27.0		7.4	8.9	105.0	1.0
	148+40.00	TO	151+32.00	292.0	38.6	11,271.2	845.3	292.0		87.7	105.2	1,252.4	
	151+32.00	TO	151+44.00	12.0	35.6	427.2	32.0	12.0		3.4	4.0	47.5	0.5
	151+44.00	TO	202+00.00	5,056.0	32.0	161,792.0	12,134.4	5,056.0		1,258.4	1,510.1	17,976.9	372.8
SUBTOTAL (RURAL)							33,970	14,090	30	3,523	4,228	50,326	1,029
(URBAN)													
	202+00.00	TO	236+89.79	3,489.8	32.0	111,673.3	8,375.5	3,489.8		868.6	1,042.3	12,408.1	259.0
	236+73.58	TO	264+13.49	2,739.9	32.0	87,677.1	6,575.8	2,739.9		682.0	818.4	9,741.9	194.0
	265+85.36	TO	273+65.00	779.6	32.0	24,948.5	1,871.1	779.6		194.1	232.9	2,772.1	58.0
AFTER MILLING	273+60.00	TO	273+65.00	5.0	32.0	160.0			17.8				
AFTER BINDER CSE	273+61.70	TO	273+65.00	3.3	32.0	105.6			11.7				
SUBTOTAL (URBAN)							16,823	7,010	30	1,745	2,094	24,923	511
TOTAL							50,793	21,100	60	5,268	6,322	75,249	1,540

SHOULDER RUMBLE STRIPS SCHEDULE					
LOCATION	STATION	TO	STATION	OFFSET	SHOULDER RUMBLE
					STRIPS, 8 INCH
					64200108
					FOOT
(RURAL)					
N.B. SHOULDER	61+10.00	TO	74+69.00	RT	1,359.00
S.B. SHOULDER	61+10.00	TO	75+30.50	LT	1,420.50
N.B. SHOULDER	75+41.00	TO	161+33.30	RT	8,442.30
S.B. SHOULDER	75+97.50	TO	119+47.70	LT	4,350.20
S.B. SHOULDER	120+06.40	TO	160+68.00	LT	4,021.10
S.B. SHOULDER	161+34.00	TO	165+27.80	LT	393.80
N.B. SHOULDER	162+18.80	TO	164+64.40	RT	245.60
N.B. SHOULDER	165+39.70	TO	202+00.00	RT	3,598.30
S.B. SHOULDER	165+98.30	TO	201+14.40	LT	3,516.10
SUBTOTAL (RURAL)					27,347
(URBAN)					
N.B. SHOULDER	202+00.00	TO	236+89.79	RT	3,058.49
S.B. SHOULDER	202+01.70	TO	236+89.79	LT	3,118.09
N.B. SHOULDER	236+73.58	TO	240+10.00	RT	336.42
S.B. SHOULDER	236+73.58	TO	264+13.49	LT	2,631.91
N.B. SHOULDER	240+94.00	TO	244+75.00	RT	381.00
N.B. SHOULDER	245+57.00	TO	264+13.49	RT	1,776.49
N.B. SHOULDER	265+85.36	TO	273+65.00	RT	676.64
S.B. SHOULDER	265+85.36	TO	273+65.00	LT	729.64
SUBTOTAL (URBAN)					12,709
TOTAL					40,056

NOTE: SHOULDER RUMBLE STRIPS ARE OMITTED AT ENTRANCES.

GUARDRAIL SCHEDULE								
STATION	TO	STATION	OFFSET	STRONG POST	TERMINAL MARKER -	GUARDRAIL	GUARDRAIL	VERTICAL
				GUARDRAIL	DIRECT APPLIED	REFLECTORS,	REMOVAL	ADJUSTMENT
				ATTACHED TO		TYPE A	(SPECIAL)	OF GUARDRAIL
				CULVERT	72501000	78200005	X6320100	X6330900
				63000030				
				FOOT	EACH	EACH	FOOT	FOOT
(RURAL)								
148+81.50	TO	149+63.00	RT		1	2		81.5
149+08.10	TO	149+70.60	LT		1	1		62.5
149+63.00	TO	149+91.00	RT	28.00		1	28.00	
149+70.60	TO	150+32.30	LT			2		
149+91.00	TO	150+62.50	RT		1	1		71.5
150+32.30	TO	150+88.60	LT		1	1		56.3
SUBTOTAL (RURAL)				28	4	8	28	272
TOTAL				28	4	8	28	272

MODEL: D:\p\h\l... FILE NAME: 1020220022060591 - PFB_2014-039_WO_#3_IL_121_C# 74C1704_Drawing\DCEN\CAD_Sheets\0774C17-ohs-ecboul-8e.dgn



USER NAME = dreimer
 PLOT SCALE = 2,000' / in.
 PLOT DATE = 12/11/2023

DESIGNED - MLL
 DRAWN - DRR
 CHECKED - RPU
 DATE - 12/11/2023

REVISED -
 REVISED -
 REVISED -
 REVISED -

STATE OF ILLINOIS
 DEPARTMENT OF TRANSPORTATION

SCHEDULE OF QUANTITIES

SCALE: N.T.S. SHEET 1 OF 5 SHEETS STA. TO STA.

F.A.P. RTE.	SECTION	COUNTY	TOTAL SHEETS	SHEET NO.
320	(101)RS-4	MACON	21	7
CONTRACT NO. 74C17				
ILLINOIS FED. AID PROJECT				

ENTRANCE SCHEDULE

DESCRIPTION	STATION	RT/LT	MATERIAL	LENGTH	WIDTH @	WIDTH @	AREA	AGGREGATE	INCIDENTAL	SURFACE
				"L"	EOP	LOC		SURFACE	HOT-MIX	REMOVAL,
				FEET	FEET	FEET	SQ YD	COURSE,	ASPHALT	VARIABLE
								TYPE B	SURFACING	DEPTH
								40200800	40800050	(SPECIAL)
								TON	TON	X0326440
										SQ YD
(RURAL)										
PRA	75+05	RT	HMA	30.3	72.0	22.0	158.2		11.1	158.2
PRA	75+64	LT	HMA	26.0	67.0	25.5	133.6		9.4	133.6
FE	92+46	RT	AGG	10.0	28.0	21.0	27.2	3.1		
FE	92+95	RT	AGG	10.0	23.6	20.2	24.3	2.8		
PRA	119+77	LT	HMA	23.0	58.7	23.7	105.3		7.4	105.3
FE	119+80	RT	AGG	10.0	28.4	20.6	27.2	3.1		
FE	121+01	RT	AGG	10.0	35.0	22.0	31.7	3.6		
RR ENT	136+15	LT	AGG	10.0	40.5	30.0	39.2	4.5		
FE	144+22	RT	AGG	10.0	35.0	19.5	30.3	3.4		
PRA	161+01	LT	HMA	28.0	66.0	33.4	154.6		10.8	154.6
PRA	161+76	RT	HMA	10.8	85.3	52.1	82.4		5.8	82.4
PRA	165+02	RT	HMA	10.0	75.3	48.0	68.5		4.8	68.5
PRA	165+63	LT	HMA	26.0	70.5	28.5	143.0		10.0	143.0
FE	168+43	RT	AGG	10.0	28.0	21.0	27.2	3.1		
FE	182+35	RT	AGG	10.0	34.0	27.0	33.9	3.9		
PRA	201+58	LT	HMA	10.0	87.3	47.8	75.1		5.3	75.1
TOTAL (RURAL)								28	65	921
(URBAN)										
PE	205+80	LT	AGG	10.0	78.0	44.0	67.8	7.7		
PE	206+23	RT	AGG	10.0	35.0	24.0	32.8	3.7		
PE	208+00	RT	HMA	10.0	38.3	25.7	35.6		2.5	35.6
MBT	209+87	LT	AGG	6.0	30.0	20.0	16.7	1.9		
PE	210+05	LT	AGG	10.0	26.0	24.0	27.8	3.2		
PE	210+58	LT	AGG	10.0	20.0	20.0	22.2	2.5		
PE	210+84	RT	HMA	6.0	40.0	28.0	22.7		1.6	22.7
PE	210+84	RT	AGG	4.0	28.0	28.0	12.4	1.4		
PE	211+22	LT	AGG	10.0	20.0	20.0	22.2	2.5		
PE	211+73	RT	AGG	10.0	46.0	38.0	46.7	5.3		
PE	212+04	LT	AGG	10.0	20.0	20.0	22.2	2.5		
PE	213+14	RT	AGG	10.0	80.0	64.0	80.0	9.1		
PE	214+26	LT	HMA	6.0	76.0	61.0	45.7		3.2	45.7
PE	214+26	LT	AGG	4.0	61.0	55.0	25.8	2.9		
FE	215+75	LT	AGG	10.0	54.0	44.0	54.4	6.2		
MBT	217+35	RT	AGG	12.0	84.0	67.0	100.7	11.5		
PE	217+92	RT	HMA	10.0	49.0	30.0	43.9		3.1	43.9
FE	227+50	RT	HMA	5.0	31.0	24.0	15.3		1.1	15.3
FE	227+50	RT	AGG	10.0	24.0	24.0	26.7	3.0		
FE	231+21	LT	AGG	10.0	46.0	30.0	42.2	4.8		
PRA	240+52	RT	HMA	10.0	84.0	54.0	76.7		5.4	76.7
CE	241+03	LT	HMA	10.0	84.0	64.0	82.2		5.8	82.2
PRA	245+16	RT	HMA	10.0	82.0	53.0	75.0		5.3	75.0
PE	257+55	RT	HMA	10.5	32.0	20.0	30.3		2.1	30.3
MBT	257+96	LT	AGG	5.0	24.0	10.0	9.4	1.1		
PE	258+24	LT	HMA	5.0	64.0	43.0	29.7		2.1	29.7
PE	258+24	LT	AGG	5.0	43.0	34.0	21.4	2.4		
PE	259+67	RT	HMA	10.0	48.0	36.0	46.7		3.3	46.7
PE	266+65	RT	HMA	5.0	53.0	39.0	25.6		1.8	25.6
FE	266+77	LT	AGG	10.0	50.0	36.0	47.8	5.4		
FE	270+76	RT	AGG	10.0	50.0	39.0	49.4	5.6		
TOTAL (URBAN)								83	38	530
TOTAL								111	103	1,451

FE - FIELD ENTRANCE CE - COMMERCIAL ENTRANCE MBT - MAILBOX TURNOUT
 PE - PRIVATE ENTRANCE PRA - PUBLIC ROAD APPROACH RR ENT - RAILROAD ENTRANCE

MODEL: D:\p\h\p\...
 FILE NAME: 2022022060591 - FTB_204-039_V0_#3_IL_121_C# 74C1704_Drawing\GEN\CAD_Sheets\0774C17-03-07-2022.dwg



USER NAME = dreimer	DESIGNED - MLL	REVISED -
	DRAWN - DRR	REVISED -
PLOT SCALE = 2,000' / in.	CHECKED - RPU	REVISED -
PLOT DATE = 12/11/2023	DATE - 12/11/2023	REVISED -

**STATE OF ILLINOIS
 DEPARTMENT OF TRANSPORTATION**

SCHEDULE OF QUANTITIES

SCALE: N.T.S. SHEET 2 OF 5 SHEETS STA. TO STA.

F.A.P. RTE.	SECTION	COUNTY	TOTAL SHEETS	SHEET NO.
320	(101)RS-4	MACON	21	8
CONTRACT NO. 74C17				
ILLINOIS FED. AID PROJECT				

PATCHING								
PATCH NUMBER	STA	LANE	LENGTH	WIDTH	CLASS D PATCHES, TYPE I, 14"	CLASS D PATCHES, TYPE II, 14"	CLASS D PATCHES, TYPE III, 14"	CLASS D PATCHES, TYPE IV, 14"
					44201811	44201815	44201819	44201821
			FOOT	FOOT	SQ YD	SQ YD	SQ YD	SQ YD
(RURAL)								
1	62+95	NB	9.0	12.0		12.0		
2	66+84	NB	13.5	12.0			18.0	
3	68+36	NB	6.0	12.0		8.0		
4	76+01	NB	29.0	5.0			16.1	
5	76+18	NB	6.0	12.0		8.0		
6	76+26	NB	9.0	5.0		5.0		
7	83+70	NB	6.0	12.0		8.0		
8	83+87	NB	27.0	5.0			15.0	
9	96+80	NB	6.0	5.0	3.3			
10	96+86	NB	8.0	12.0		10.7		
11	96+97	NB	13.0	5.0		7.2		
12	97+55	NB	28.0	5.0			15.6	
13	98+38	NB	40.0	5.0			22.2	
14	99+34	NB	34.0	5.0			18.9	
15	105+55	NB	30.0	12.0				40.0
16	106+49	NB	10.0	12.0		13.3		
17	120+16	NB	8.0	12.0		10.7		
18	120+16	SB	8.0	12.0		10.7		
19	120+72	NB	26.0	5.0		14.4		
20	126+89	NB	10.0	5.0		5.6		
21	126+93	NB	4.0	12.0		5.3		
22	138+66	NB	28.0	12.0				37.3
23	139+59	NB	26.0	12.0				34.7
24	147+33	NB	25.0	5.0		13.9		
25	148+07	NB	20.0	5.0		11.1		
26	149+59	SB	14.0	12.0			18.7	
27	150+16	NB	23.0	12.0				30.7
28	150+20	SB	10.0	12.0		13.3		
29	154+65	NB	20.0	12.0				26.7
30	154+65	SB	20.0	12.0				26.7
31	159+53	SB	6.0	12.0		8.0		
32	159+55	NB	20.0	12.0				26.7
33	160+27	SB	4.0	12.0		5.3		
34	173+81	SB	6.0	12.0		8.0		
35	174+67	NB	8.0	5.0	4.4			
36	175+11	NB	6.0	12.0		8.0		
37	175+67	NB	6.0	5.0	3.3			
38	180+76	NB	6.0	12.0		8.0		
39	180+87	SB	8.0	12.0		10.7		
40	181+60	NB	8.0	12.0		10.7		
41	181+60	SB	6.0	12.0		8.0		
42	185+11	NB	10.0	12.0		13.3		
43	189+31	NB	6.0	12.0		8.0		
44	189+59	SB	8.0	12.0		10.7		
45	189+84	SB	10.0	12.0		13.3		
46	192+33	SB	6.0	12.0		8.0		
SUBTOTAL (RURAL)					11	278	125	223
(URBAN)								

PATCHING								
PATCH NUMBER	STA	LANE	LENGTH	WIDTH	CLASS D PATCHES, TYPE I, 14"	CLASS D PATCHES, TYPE II, 14"	CLASS D PATCHES, TYPE III, 14"	CLASS D PATCHES, TYPE IV, 14"
					44201811	44201815	44201819	44201821
			FOOT	FOOT	SQ YD	SQ YD	SQ YD	SQ YD
47	204+25	NB	6.0	12.0		8.0		
48	205+48	NB	8.0	12.0		10.7		
49	205+48	SB	6.0	12.0		8.0		
50	211+86	NB	4.0	12.0		5.3		
51	214+06	SB	6.0	12.0		8.0		
52	214+50	SB	10.0	12.0		13.3		
53	215+51	NB	4.0	12.0		5.3		
54	216+82	NB	6.0	12.0		8.0		
55	218+03	NB	12.0	12.0			16.0	
56	218+03	SB	10.0	12.0		13.3		
57	218+30	SB	4.0	12.0		5.3		
58	222+69	NB	16.0	12.0			21.3	
59	223+51	SB	4.0	12.0		5.3		
60	223+72	SB	4.0	12.0		5.3		
61	226+67	NB	20.0	5.0		11.1		
62	227+27	NB	6.0	5.0	3.3			
63	227+63	NB	6.0	12.0		8.0		
64	231+70	NB	16.0	12.0			21.3	
65	232+47	SB	6.0	12.0		8.0		
66	234+33	SB	6.0	12.0		8.0		
67	236+78	SB	20.0	12.0				26.7
68	244+09	NB	6.0	12.0		8.0		
69	244+09	SB	6.0	12.0		8.0		
70	244+76	SB	6.0	12.0		8.0		
71	246+06	SB	6.0	12.0		8.0		
72	247+00	SB	5.0	12.0		6.7		
73	254+64	NB	8.0	12.0		10.7		
74	254+65	SB	6.0	12.0		8.0		
75	255+81	SB	6.0	12.0		8.0		
76	256+00	NB	6.0	12.0		8.0		
77	257+04	SB	5.0	12.0		6.7		
78	259+06	NB	8.0	12.0		10.7		
79	259+08	SB	12.0	12.0			16.0	
80	259+25	NB	18.0	12.0			24.0	
81	259+25	SB	6.0	12.0		8.0		
82	261+05	NB	6.0	12.0		8.0		
83	263+95	SB	6.0	12.0		8.0		
84	264+04	NB	20.0	12.0				26.7
85	272+00	SB	6.0	12.0		8.0		
SUBTOTAL (URBAN)					4	254	99	54
TOTAL					15	532	224	277

MODEL: D:\info\...
 FILE NAME: 2022022060591 - PFB_204-439_V0_#3_IL_121_C#_74C1704_Drawing\DCEN\CAD_Sheets\0774C17-shs-ctb\ctb.dgn



USER NAME = dreimer	DESIGNED - MLL	REVISED -
PLOT SCALE = 2,000' / in.	DRAWN - DRR	REVISED -
PLOT DATE = 12/11/2023	CHECKED - RPU	REVISED -
	DATE - 12/11/2023	REVISED -

STATE OF ILLINOIS
DEPARTMENT OF TRANSPORTATION

SCALE: N.T.S.				SHEET 3 OF 5 SHEETS				STA. TO STA.			
---------------	--	--	--	---------------------	--	--	--	--------------	--	--	--

F.A.P. RTE.	SECTION	COUNTY	TOTAL SHEETS	SHEET NO.
320	(101)RS-4	MACON	21	9
CONTRACT NO. 74C17				
ILLINOIS FED. AID PROJECT				

PAVEMENT MARKING SCHEDULE									
STATION	TO	STATION	LENGTH FOOT	SHORT TERM PAVEMENT MARKING 70300100 FOOT	SHORT TERM PAVEMENT REMOVAL 70300150 SQ FT	PAINT PAVEMENT MARKING - LINE 4" WHITE 78001110 FOOT	PAINT PAVEMENT MARKING - LINE 4" YELLOW 78001110 FOOT	RAISED REFLECTIVE PAVEMENT MARKER 78100100 EACH	RAISED REFLECTIVE PAVEMENT MARKER REMOVAL 78300200 EACH
(RURAL)									
61+10.00	TO	202+00.00	14,090.00	4,227.00	469.67		3,522.50	177.00	177.00
61+10.00	TO	74+69.00	1,359.00			1,359.00			
75+41.00	TO	161+33.30	8,592.30			8,592.30			
162+18.80	TO	164+64.40	245.60			245.60			
165+39.70	TO	202+00.00	3,660.30			3,660.30			
61+10.00	TO	75+30.50	1,420.50			1,420.50			
75+97.50	TO	119+47.70	4,350.20			4,350.20			
120+06.40	TO	160+68.00	4,061.60			4,061.60			
161+34.00	TO	165+27.80	393.80			393.80			
165+98.30	TO	201+14.40	3,516.10			3,516.10			
SUBTOTAL (RURAL)				4,227	470	27,600	3,523	177	177
(URBAN)									
202+00.00	TO	236+89.79	3,489.79	1,046.94	116.33		872.45	44.00	44.00
236+73.58	TO	264+13.49	2,739.91	821.97	91.33		684.98	34.00	34.00
265+85.36	TO	273+65.00	779.64	233.89	25.99		194.91	10.00	10.00
202+00.00	TO	236+89.79	3,489.79			3,489.79			
236+73.58	TO	240+10.00	336.42			336.42			
240+94.00	TO	244+75.00	381.00			381.00			
245+57.00	TO	264+13.49	1,856.49			1,856.49			
265+85.36	TO	273+65.00	779.64			779.64			
202+01.70	TO	236+89.79	3,488.09			3,488.09			
236+73.58	TO	264+13.49	2,739.91			2,739.91			
265+85.36	TO	273+65.00	779.64			779.64			
SUBTOTAL (URBAN)				2,103	234	13,851	1,753	88	88
TOTAL				6,330	704	41,451	5,276	265	265

MODEL: D:\p\h\p\...
 FILE NAME: 202202202060501 - PFB_2014-039_WO #3 IL 121 C# 74C1704_Drawing\DEN\CAD_Sheets\0774C17-04-rs-ctb\0774C17-04-rs-ctb.dgn



USER NAME = dreimer	DESIGNED - MLL	REVISED -
	DRAWN - DRR	REVISED -
PLOT SCALE = 2,0000' / in.	CHECKED - RPU	REVISED -
PLOT DATE = 12/11/2023	DATE - 12/11/2023	REVISED -

STATE OF ILLINOIS
DEPARTMENT OF TRANSPORTATION

SCHEDULE OF QUANTITIES

SCALE: N.T.S. SHEET 4 OF 5 SHEETS STA. TO STA.

F.A.P. RTE. 320	SECTION (101)RS-4	COUNTY MACON	TOTAL SHEETS 21	SHEET NO. 10
			CONTRACT NO. 74C17	
ILLINOIS FED. AID PROJECT				

MODEL: D:\p\h\h
 FILE NAME: 202202202060591 - PTB_204-039_WO #3 IL 121 C# 74C1704_Drawing\DEN\CAD_Sheets\0774C17-shs-schedule.dgn

SURVEY MARKER SCHEDULE							
POINT	NORTHING	EASTING	STATION	OFFSET	DESCRIPTION	PROPOSED PROTECT OR RESET DEVICE	PROTECTING OR RESETTING SURVEY MARKERS Z0049799 EACH
(RURAL)							
1000	1123667.41	839088.58	196+49.73	0.0'	ALUM DISK STAMPED PC 196+49.73	TYPE I - DISK FLUSH W/PAVEMENT	1
SUBTOTAL (RURAL)							1
(URBAN)							
1001	1124541.07	838738.24	206+09.79	0.0'	ALUM DISK PT	TYPE I - DISK FLUSH W/PAVEMENT	1
1002	1125340.80	838699.85	214+13 +/- 236+89.79 BK =	8.6' LT	1" IRON PIN IN ALUM VAULT BURIED +/-6" SEE MONUMENT RECORD	REMOVE VAULT AND IP TO REMAIN BELOW THE SURFACE AND INSTALL TYPE I - DISK FLUSH W/PAVEMENT	1
1003	1127618.65	838625.98	236+73.58 AH	0.0'	ALUM STEM FOUND DISK GONE	TYPE I - DISK FLUSH W/PAVEMENT	1
1004	1127998.08	838648.68	240+500+/-	50' RT	PK NAIL FOUND SEE MONUMENT RECORD	TYPE I - DISK FLUSH W/PAVEMENT	1
1005	1129542.93	837199.94	262+58.85	0.0'	ALUM DISK STAMPED PT 262+58.85	TYPE I - DISK FLUSH W/PAVEMENT	1
1006	1129582.79	837050.12	364+1349 BK = 265+85.36	0.0'	ALUM DISK STAMPED 264+13 = 265+85?	TYPE I - DISK FLUSH W/PAVEMENT	1
1007	1129625.64	836888.17	267+53.05	0.0'	ALUM DISK	TYPE I - DISK FLUSH W/PAVEMENT	1
1008	1127766.68	838620.66	238+21.73	0.0'	ALUM DISK PC	TYPE I - DISK FLUSH W/PAVEMENT	1
SUBTOTAL (URBAN)							8
TOTAL							9



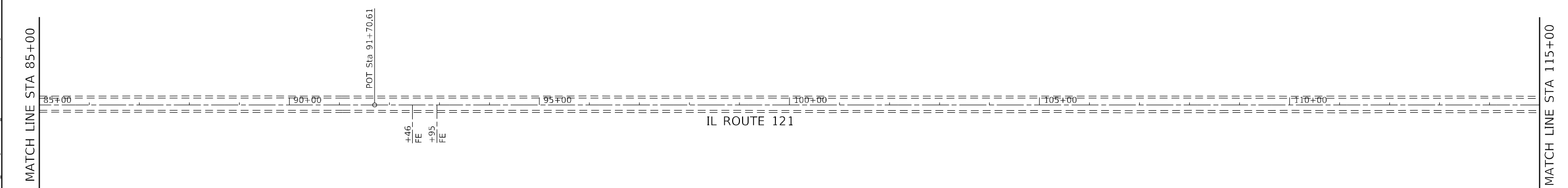
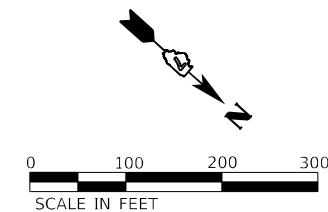
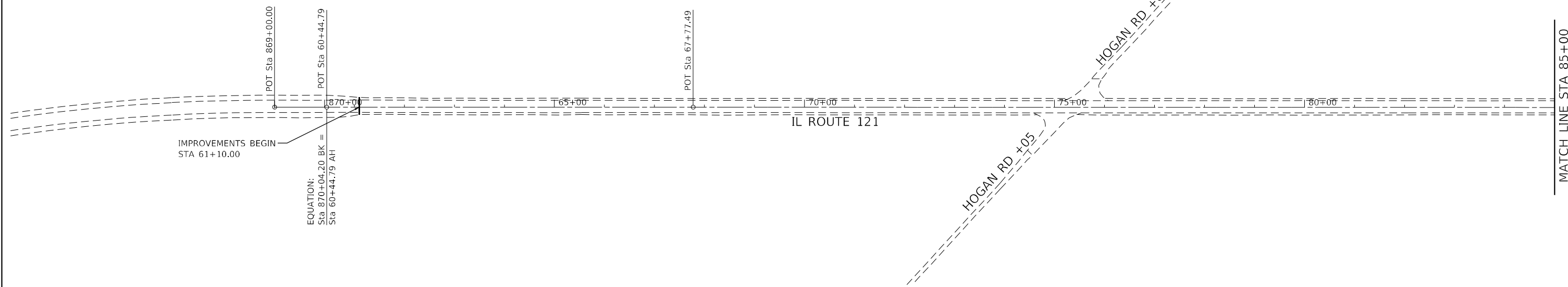
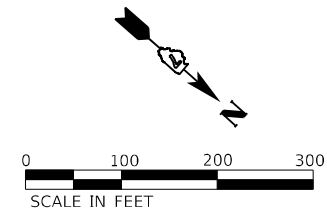
USER NAME = dreimer	DESIGNED - MLL	REVISED -
	DRAWN - DRR	REVISED -
PLOT SCALE = 2,0000' / in.	CHECKED - RPU	REVISED -
PLOT DATE = 12/11/2023	DATE - 12/11/2023	REVISED -

STATE OF ILLINOIS
DEPARTMENT OF TRANSPORTATION

SCHEDULE OF QUANTITIES

SCALE: N.T.S. SHEET 5 OF 5 SHEETS STA. TO STA.

F.A.P. RTE.	SECTION	COUNTY	TOTAL SHEETS	SHEET NO.
320	(101)RS-4	MACON	21	11
CONTRACT NO. 74C17				
ILLINOIS FED. AID PROJECT				



MODEL: D:\dwg\11
 FILE NAME: J:\2022\20220605\91 - FTB_204-039_V0 #3 IL 121 C# 74C17\04_Drawing\DWG\CAD_Sheets\074C17-dbs-ahm.dgn

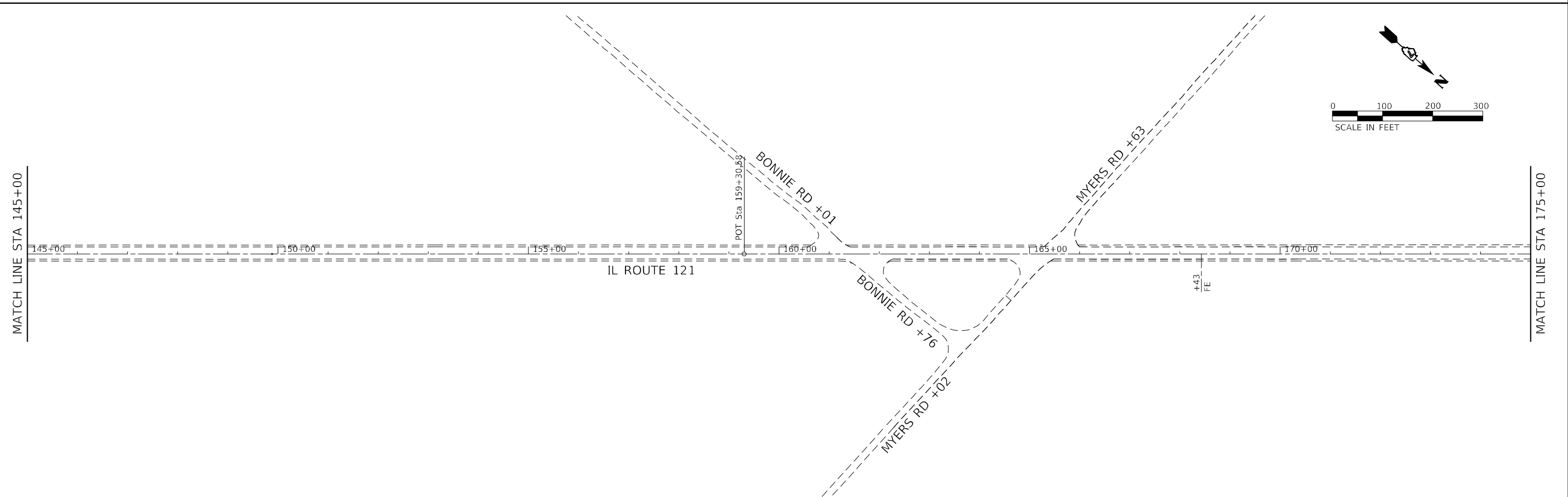
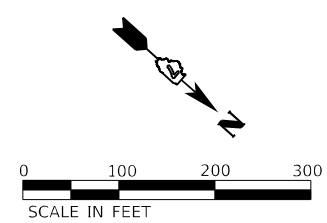
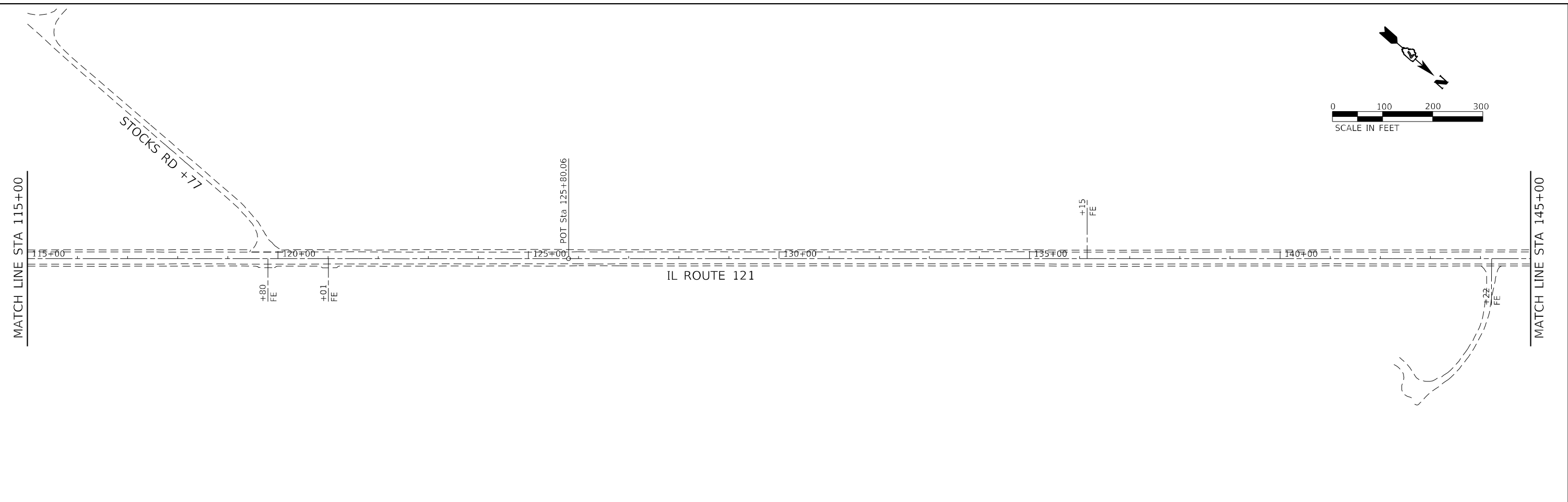
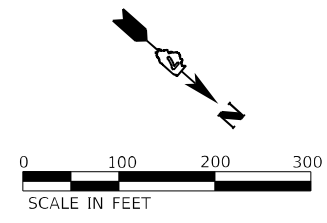
Farnsworth GROUP
 2211 BRADLEY AVENUE
 CHAMPAIGN, ILLINOIS 61821
 (217) 352-7408 / info@fw.com

USER NAME = dreimer	DESIGNED - MLL	REVISED -
DRAWN - DRR	REVISIONS -	
PLOT SCALE = 200,0000 ' / in.	CHECKED - RPU	REVISED -
PLOT DATE = 12/11/2023	DATE - 12/11/2023	REVISED -

**STATE OF ILLINOIS
 DEPARTMENT OF TRANSPORTATION**

IL ROUTE 121			
SCALE: 1"=100'	SHEET 1 OF 4 SHEETS	STA. 869+00	TO STA. 115+00

F.A.P. RTE. 320	SECTION (101)RS-4	COUNTY MACON	TOTAL SHEETS 21	SHEET NO. 12
CONTRACT NO. 74C17				
ILLINOIS FED. AID PROJECT				



MODEL: D:\dwg\11
 FILE NAME: 20220220220605091 - PTB_2044339_V0 #3 IL 121 C# 74C1704_Drawing\GEN\CAD_Sheets\074C17-dbs-pln.dgn

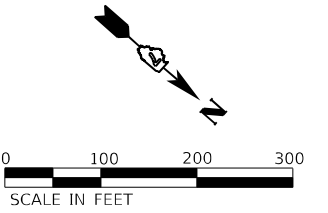
Farnsworth GROUP
 2211 BRADLEY AVENUE
 CHAMPAIGN, ILLINOIS 61821
 (217) 352-7408 / info@f-w.com

USER NAME = dreimer	DESIGNED - MLL	REVISED -
DRAWN - DRR	REVISOR -	
PLOT SCALE = 200,0000 ' / in.	CHECKED - RPU	REVISED -
PLOT DATE = 12/11/2023	DATE - 12/11/2023	REVISED -

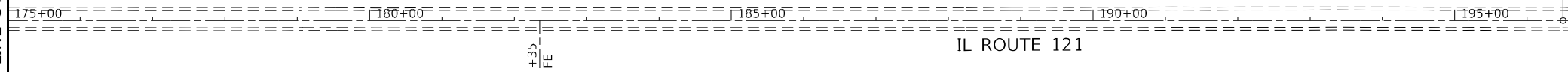
STATE OF ILLINOIS
DEPARTMENT OF TRANSPORTATION

IL ROUTE 121			
SCALE: 1"=100'	SHEET 2 OF 4 SHEETS	STA. 115+00	TO STA. 175+00

F.A.P. RTE. 320	SECTION (101)RS-4	COUNTY MACON	TOTAL SHEETS 21	SHEET NO. 13
CONTRACT NO. 74C17				
ILLINOIS FED. AID PROJECT				

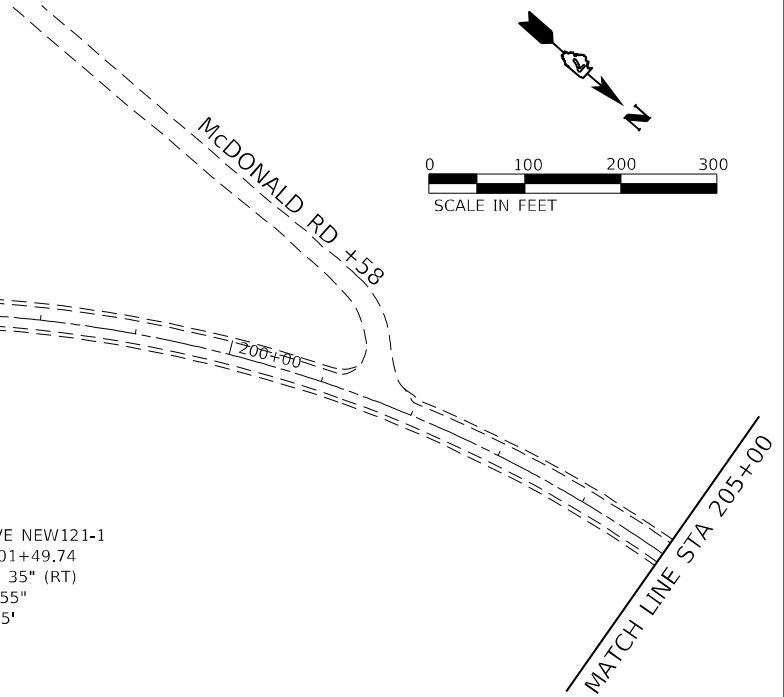


MATCH LINE STA 175+00

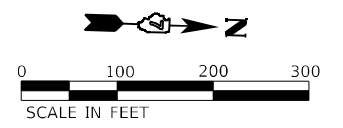


PC Sta 196+49.73

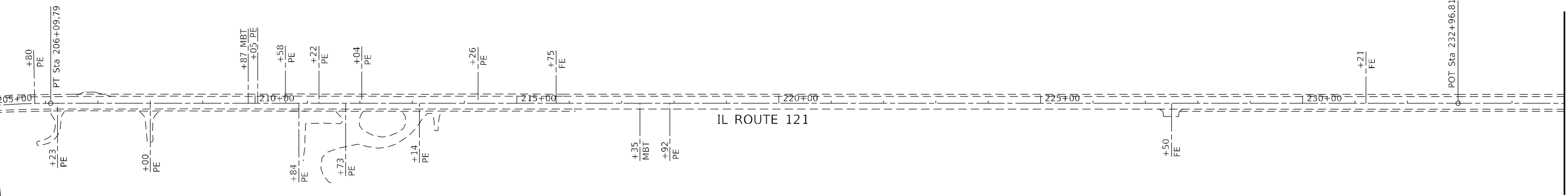
EXIST. CURVE NEW121-1
 PI STA. = 201+49.74
 $\Delta = 39^\circ 30' 35''$ (RT)
 $D = 4^\circ 06' 55''$
 $R = 1,392.25'$
 $T = 500.00'$
 $L = 960.06'$
 $E = 87.06'$
 $e =$
 $T.R. =$
 $S.E. RUN =$
 $P.C. STA. = 196+49.73$
 $P.T. STA. = 206+09.79$



MATCH LINE STA 205+00



MATCH LINE STA 205+00



MATCH LINE STA 235+00

MODEL Path: \\... Drawing: 74C17-04.dwg, SHEETS: 74C17-04.dwg

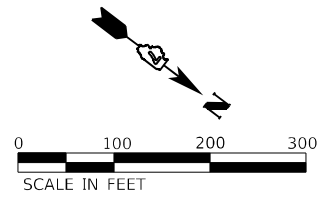
Farnsworth GROUP
 2211 BRADLEY AVENUE
 CHAMPAIGN, ILLINOIS 61821
 (217) 352-7408 / info@f-w.com

USER NAME = dreimer	DESIGNED - MLL	REVISED -
PLOT SCALE = 200,0000' / in.	DRAWN - DRR	REVISED -
PLOT DATE = 12/11/2023	CHECKED - RPU	REVISED -
	DATE - 12/11/2023	REVISED -

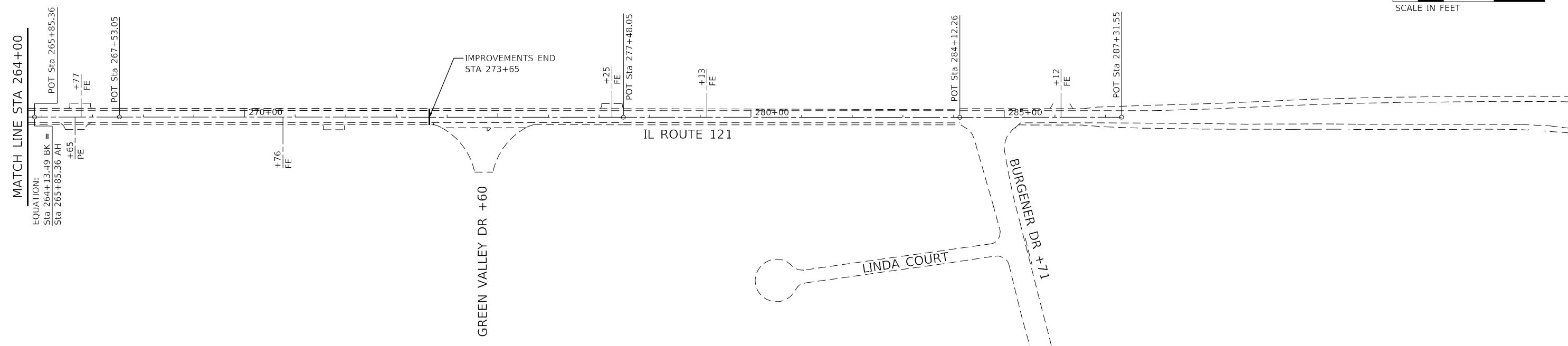
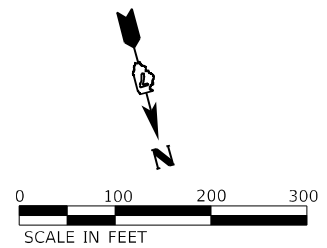
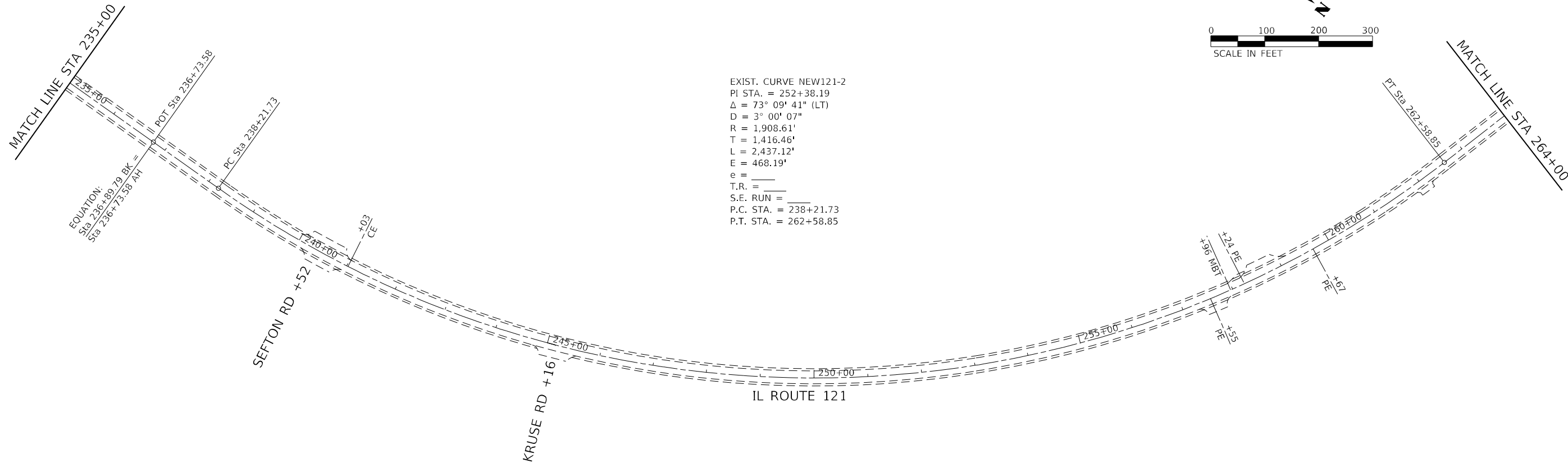
**STATE OF ILLINOIS
 DEPARTMENT OF TRANSPORTATION**

IL ROUTE 121	
SCALE: 1"=100'	SHEET 3 OF 4 SHEETS
STA. 175+00	TO STA. 235+00

F.A.P. RTE. 320	SECTION (101)RS-4	COUNTY MACON	TOTAL SHEETS 21	SHEET NO. 14
CONTRACT NO. 74C17				
ILLINOIS FED. AID PROJECT				



EXIST. CURVE NEW121-2
 PI STA. = 252+38.19
 $\Delta = 73^\circ 09' 41''$ (LT)
 $D = 3^\circ 00' 07''$
 $R = 1,908.61'$
 $T = 1,416.46'$
 $L = 2,437.12'$
 $E = 468.19'$
 $e =$
 $T.R. =$
 $S.E. RUN =$
 $P.C. STA. = 238+21.73$
 $P.T. STA. = 262+58.85$



MODEL: D:\p\h\p\... FILE NAME: 202202202060591 - PFB_2044239_V0 #3 IL 121 C# 74C1704_Drawing\GEN\CAD_Sheets\074C17-dbs-ahm.dgn

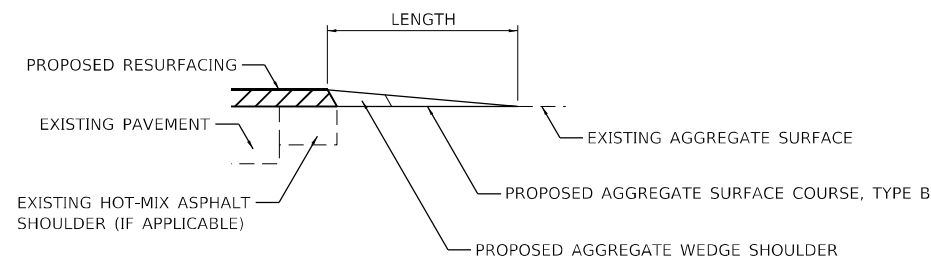
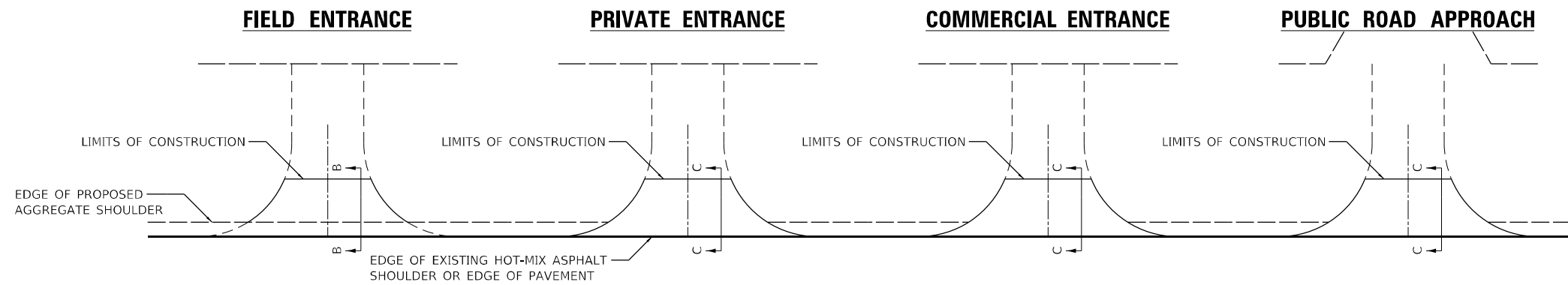
Farnsworth GROUP
 2211 BRADLEY AVENUE
 CHAMPAIGN, ILLINOIS 61821
 (217) 352-7408 / info@f-w.com

USER NAME = dreimer	DESIGNED - MLL	REVISED -
PLOT SCALE = 200,0000' / in.	DRAWN - DRR	REVISED -
PLOT DATE = 12/11/2023	CHECKED - RPU	REVISED -
	DATE - 12/11/2023	REVISED -

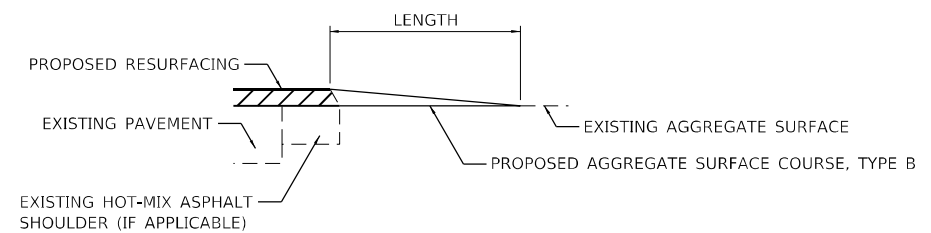
**STATE OF ILLINOIS
 DEPARTMENT OF TRANSPORTATION**

IL ROUTE 121	
SCALE: 1"=100'	SHEET 4 OF 4 SHEETS
STA. 235+00	TO STA. 287+31.55

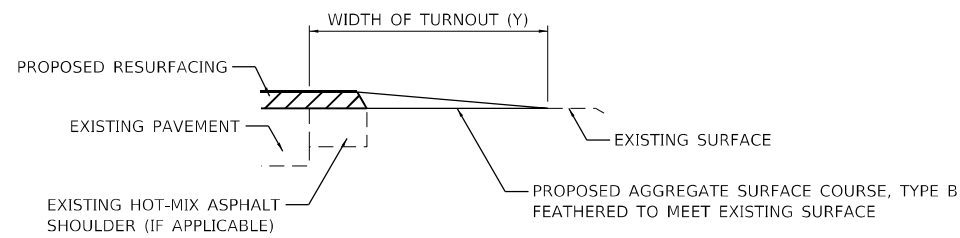
F.A.P. RTE. 320	SECTION (101)RS-4	COUNTY MACON	TOTAL SHEETS 21	SHEET NO. 15
CONTRACT NO. 74C17				
ILLINOIS FED. AID PROJECT				



SECTION B-B

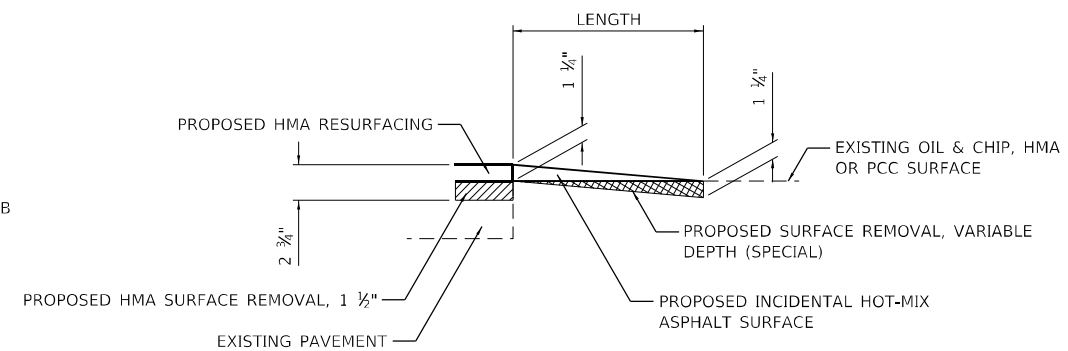


SECTION C-C



TYPICAL SECTION AT MAILBOX TURNOUT

NOTE: SEE STANDARD 406201 FOR MAILBOX TURNOUT DETAILS



SECTION C-C

REMOVAL LEGEND

- PROPOSED SURFACE REMOVAL, VARIABLE DEPTH (SPECIAL)
- PROPOSED HMA SURFACE REMOVAL, 1 1/2"

NOTES

- LENGTH = 10' UNLESS OTHERWISE NOTED ON PLANS
- IF THERE IS NOT EXISTING HOT-MIX ASPHALT SHOULDER THEN THE ENTRANCE TAPER STARTS AT THE EDGE OF EXISTING PAVEMENT

MODEL: D:\dwg\11\2022\20220605\91 - FTB_20A4-039_V0_#3_IL_121_C# 74C1704_Drawing\DWG\CAD_Sheets\0774C17-dbs-draw.dwg

Farnsworth GROUP
2211 BRADLEY AVENUE
CHAMPAIGN, ILLINOIS 61821
(217) 352-7408 / info@f-w.com

USER NAME = dreimer	DESIGNED - MLL	REVISED -
	DRAWN - DRR	REVISED -
PLOT SCALE = 20,0000 * / in.	CHECKED - RPU	REVISED -
PLOT DATE = 12/11/2023	DATE - 12/11/2023	REVISED -

**STATE OF ILLINOIS
DEPARTMENT OF TRANSPORTATION**

RURAL ENTRANCE AND MAILBOX TURNOUT DETAIL

SCALE: N.T.S. SHEET 1 OF 1 SHEETS STA. TO STA.

F.A.P. RTE.	SECTION	COUNTY	TOTAL SHEETS	SHEET NO.
320	(101)RS-4	MACON	21	16
CONTRACT NO. 74C17			ILLINOIS FED. AID PROJECT	

PAVING TRANSITION DETAIL

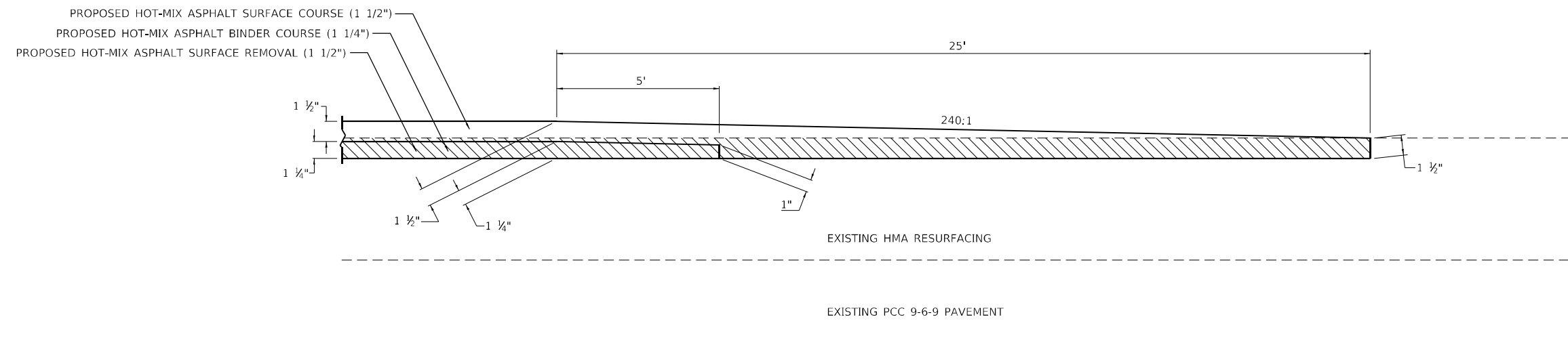
STATION **TO** **STATION**

61 + 10.00 **61 + 35.00**

273 + 40.00 **273 + 65.00**

REMOVAL LEGEND

PROPOSED HOT-MIX ASPHALT SURFACE REMOVAL (1 1/2") 



MODEL: D:\p\h\h
 FILE NAME: 2022022022060501 - PFB_2014-039_WO #3 IL 121.C# 74C1704_Drawing\GEN\CAD_Sheets\0774C17-04-hs-detail.dgn



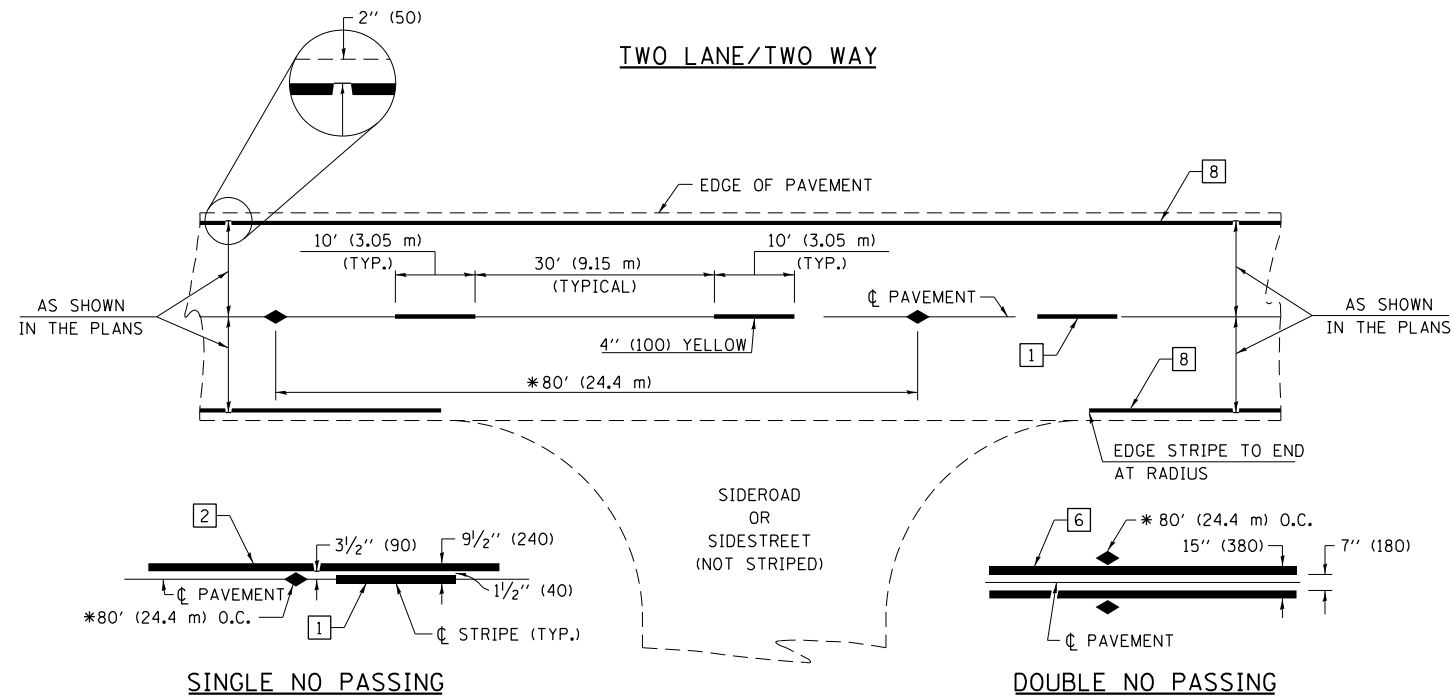
USER NAME = dreimer	DESIGNED - MLL	REVISED -
DRAWN - DRR	CHECKED - RPU	REVISED -
PLOT SCALE = 20,0000 * / in.	DATE - 12/11/2023	REVISED -
PLOT DATE = 12/11/2023		

**STATE OF ILLINOIS
DEPARTMENT OF TRANSPORTATION**

PAVING TRANSITION DETAIL

SCALE: N.T.S. SHEET 1 OF 1 SHEETS STA. TO STA.

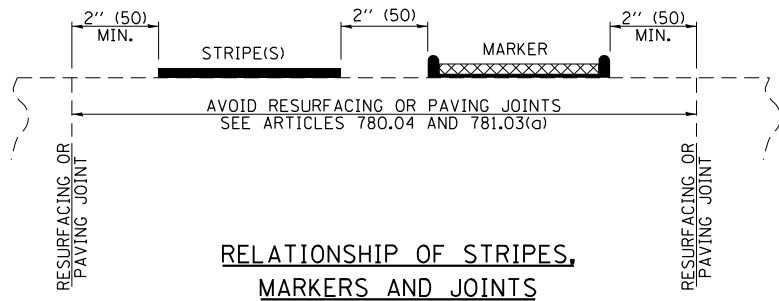
F.A.P. RTE. 320	SECTION (101)RS-4	COUNTY MACON	TOTAL SHEETS 21	SHEET NO. 17
ILLINOIS FED. AID PROJECT			CONTRACT NO. 74C17	



* REDUCE TO 40' (12.2 m) O.C. ON CURVES WITH POSTED OR ADVISORY SPEEDS OF 45 mph (70 km/h) OR LESS.

PAVEMENT MARKING LEGEND

- 1 4" (100) SKIP-DASH (YELLOW)
- 2 4" (100) SOLID (YELLOW)
- 3 12" (300) DIAGONAL (YELLOW)
- 4 4" (100) DOUBLE YELLOW (NARROW)
- 5 12" (300) SOLID WHITE
- 6 4" (100) DOUBLE YELLOW (WIDE)
- 7 6" (150) SKIP-DASH (WHITE)
- 8 4" (100) SOLID (WHITE)
- 9 12" (300) DIAGONAL (WHITE)
- 10 6" (150) SOLID (WHITE)
- 11 24" (600) STOP BAR (WHITE)
- 12 8" (200) SOLID (WHITE)
- 13 4" (100) PARKING WHITE

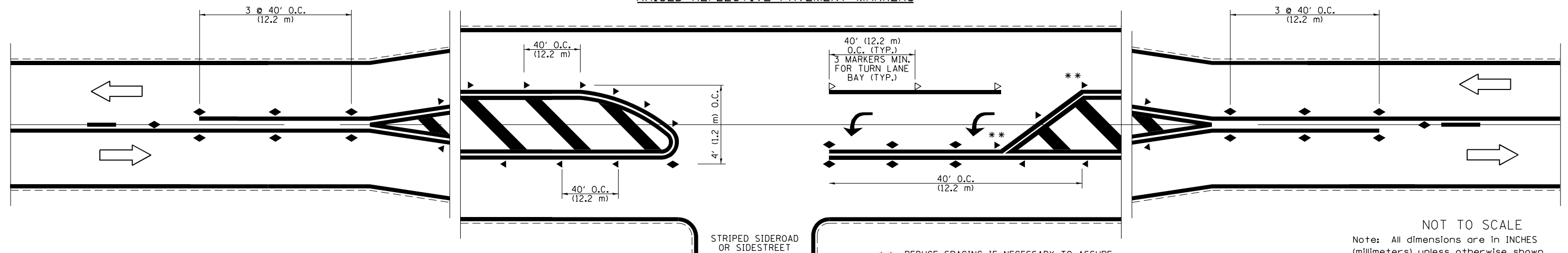


RELATIONSHIP OF STRIPES, MARKERS AND JOINTS

TYPICAL PAVEMENT MARKERS LEGEND

- ◆ TWO-WAY AMBER MARKER
- ▶ ONE-WAY AMBER MARKER
- ▷ ONE-WAY CRYSTAL MARKER

RAISED REFLECTIVE PAVEMENT MARKERS



** REDUCE SPACING IF NECESSARY TO ASSURE MARKERS AT CORNER POINTS.

NOT TO SCALE
Note: All dimensions are in INCHES (millimeters) unless otherwise shown.

DISTRICT 7 DETAIL NO. 7800001

MODEL Path: \\... FILE NAME: 2022022060591 - PFB_2014-039_V0_#3_IL_121_C# 74C17-04_Drawing(DEN)CAD_Sheets\0774C17-shs-detail.dwg

USER NAME = dreimer	DESIGNED -	REVISED - NAS 06/22
PLOT SCALE = 100,0000' / in.	DRAWN -	REVISED -
PLOT DATE = 12/11/2023	CHECKED -	REVISED -
	DATE -	REVISED -

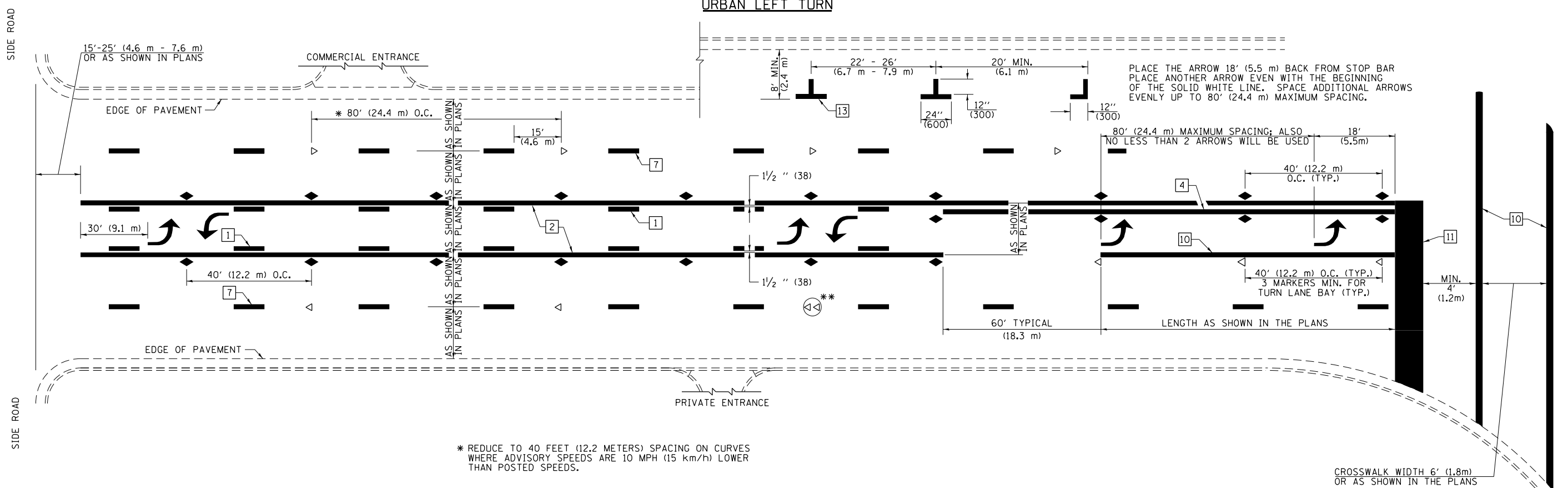
**STATE OF ILLINOIS
DEPARTMENT OF TRANSPORTATION**

**PAVEMENT MARKING AND RAISED REFLECTIVE PAVEMENT MARKERS
(RURAL & URBAN APPLICATIONS)**

SCALE: SHEET 1 OF 4 SHEETS STA. TO STA.

F.A.P. RTE.	SECTION	COUNTY	TOTAL SHEETS	SHEET NO.
320	(101)RS-4	MACON	21	18
CONTRACT NO. 74C17				
ILLINOIS FED. AID PROJECT				

URBAN LEFT TURN



PLACE THE ARROW 18' (5.5 m) BACK FROM STOP BAR
PLACE ANOTHER ARROW EVEN WITH THE BEGINNING
OF THE SOLID WHITE LINE. SPACE ADDITIONAL ARROWS
EVENLY UP TO 80' (24.4 m) MAXIMUM SPACING.

* REDUCE TO 40 FEET (12.2 METERS) SPACING ON CURVES
WHERE ADVISORY SPEEDS ARE 10 MPH (15 km/h) LOWER
THAN POSTED SPEEDS.

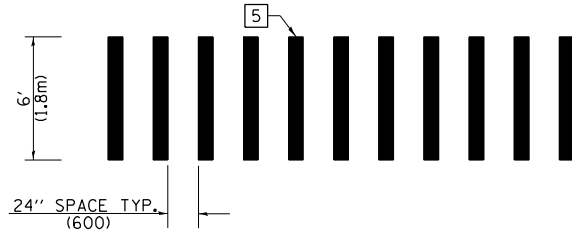
** DOUBLE LANE LINE MARKERS SHALL BE SPECIFIED
AND SPACED AS SHOWN IN HIGHWAY STANDARD
781001 FOR MULTI-LANE DIVIDED AND UNDIVIDED
HIGHWAYS.

PAVEMENT MARKING LEGEND

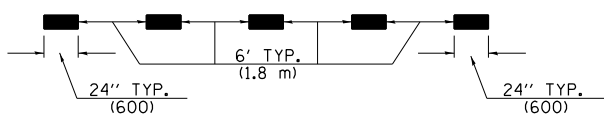
- 1 4" (100) SKIP-DASH (YELLOW)
- 2 4" (100) SOLID (YELLOW)
- 3 12" (300) DIAGONAL (YELLOW)
- 4 4" (100) DOUBLE YELLOW (NARROW)
- 5 12" (300) SOLID WHITE
- 6 4" (100) DOUBLE YELLOW (WIDE)
- 7 6" (150) SKIP-DASH (WHITE)
- 8 4" (100) SOLID (WHITE)
- 9 12" (300) DIAGONAL (WHITE)
- 10 6" (150) SOLID (WHITE)
- 11 24" (600) STOP BAR (WHITE)
- 12 8" (200) SOLID (WHITE)
- 13 4" (100) PARKING WHITE

GENERAL NOTES

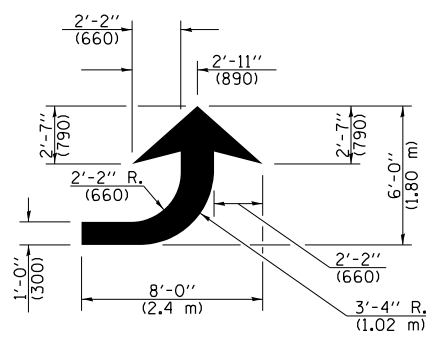
1. TURN ARROW PAIRS SHALL BE PLACED AT 250' (75 m)
INTERVALS AND SHALL BE EVENLY SPACED BETWEEN
BOTH ENDS OF THE BIDIRECTIONAL LEFT TURN LANE.
USE A MINIMUM OF TWO PAIRS PER BLOCK.
2. THE SOLID YELLOW PAVEMENT MARKINGS [2] SHOULD
GENERALLY START OR END NEAR THE RADIUS POINT
OF EACH STREET RETURN EXCEPT WHERE ONE OR BOTH
ENDS WOULD INCLUDE STOP BARS.
3. THE SKIP-DASH PAVEMENT MARKINGS [1] OR [7] SHOULD
BE CENTERED BETWEEN BOTH ENDS OF EACH CITY BLOCK
AND SHALL BE PLACED SO THEY LINE UP ACROSS FROM
EACH OTHER.
4. USE LARGE ARROW SIZE FOR BOTH RURAL AND URBAN
LOCATIONS. (SEE SECTION 780 FOR SYMBOLS TABLE)
5. LANE LINE EXTENSIONS SHALL BE THE SAME COLOR
AND WIDTH AS THE LANE LINE BEING EXTENDED.
6. ALL WHITE SKIP-DASH LINES SHALL BE 6" IN WIDTH.



**CROSSWALK DETAIL
(DECATUR CITY LIMITS ONLY)**

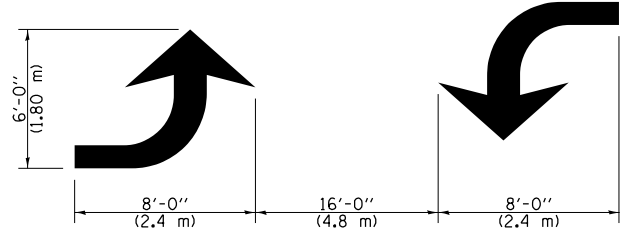


LANE LINE EXTENSIONS



LEFT ARROW

REVERSE FOR RIGHT ARROW
AREA = 15.6 SQ. FT. (1.47 m²)
(WHITE)



**TYPICAL DOUBLE
TURN ARROWS (WHITE)**

NOT TO SCALE

Note: All dimensions are in INCHES
(millimeters) unless otherwise shown.

DISTRICT 7 DETAIL NO. 7800001

MODEL: Defaul; FILE NAME: 2022022060591 - PFB_2014-239_V0_#3_IL_121_C# 74C17104_Drawing(DEN)CAD_Sheets(07)ACT17-obj-detail1-Det-1c.dwg

USER NAME = dreimer	DESIGNED -	REVISED - NAS 06/22
PLOT SCALE = 100,0000' / in.	DRAWN -	REVISED -
PLOT DATE = 12/11/2023	CHECKED -	REVISED -
	DATE -	REVISED -

**STATE OF ILLINOIS
DEPARTMENT OF TRANSPORTATION**

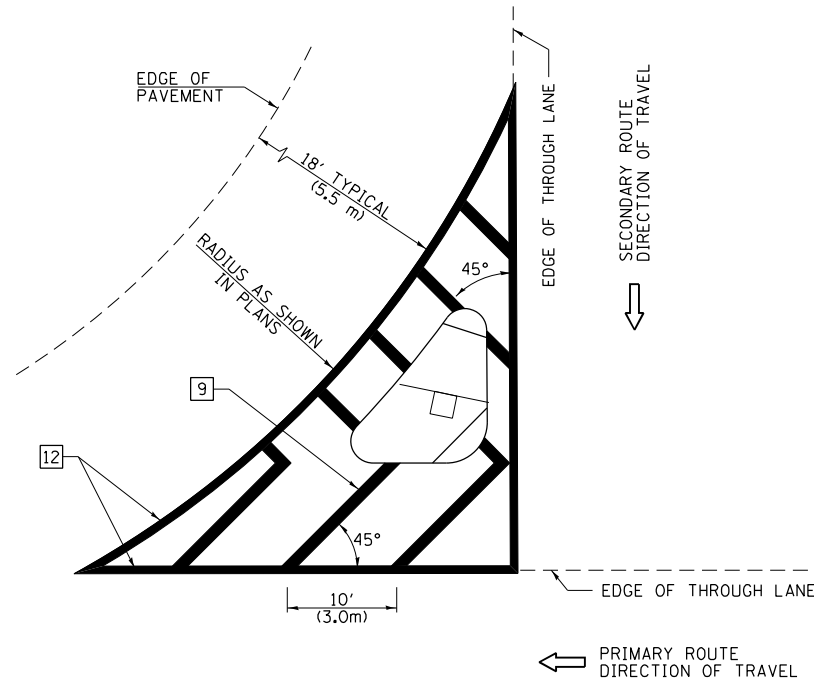
**PAVEMENT MARKING AND RAISED REFLECTIVE PAVEMENT MARKERS
(RURAL & URBAN APPLICATIONS)**

SCALE: SHEET 2 OF 4 SHEETS STA. TO STA.

F.A.P. RTE.	SECTION	COUNTY	TOTAL SHEETS	SHEET NO.
320	(101)RS-4	MACON	21	19
CONTRACT NO. 74C17				
ILLINOIS FED. AID PROJECT				

ISLANDS

OPTION 1

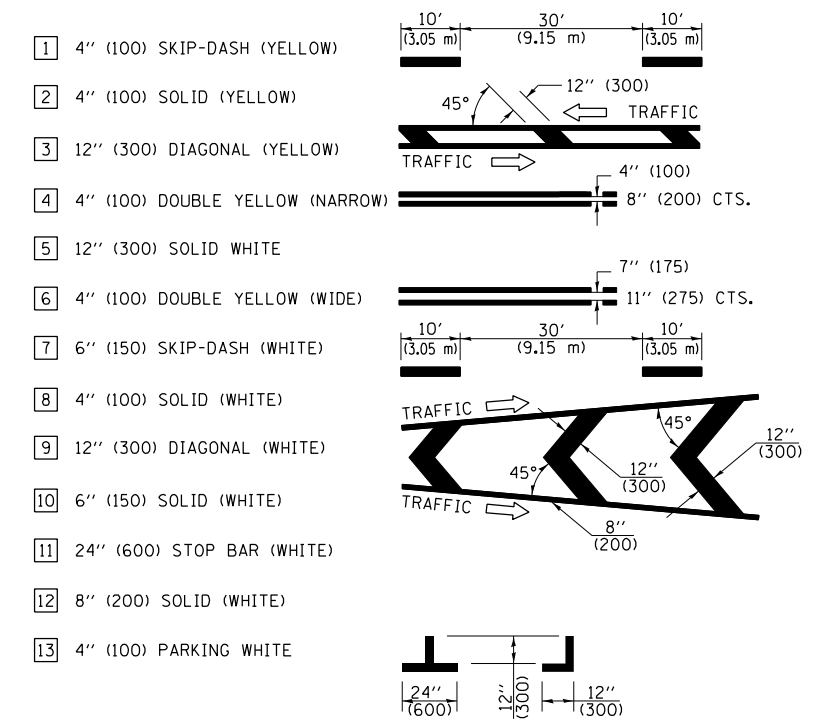


GENERAL NOTES

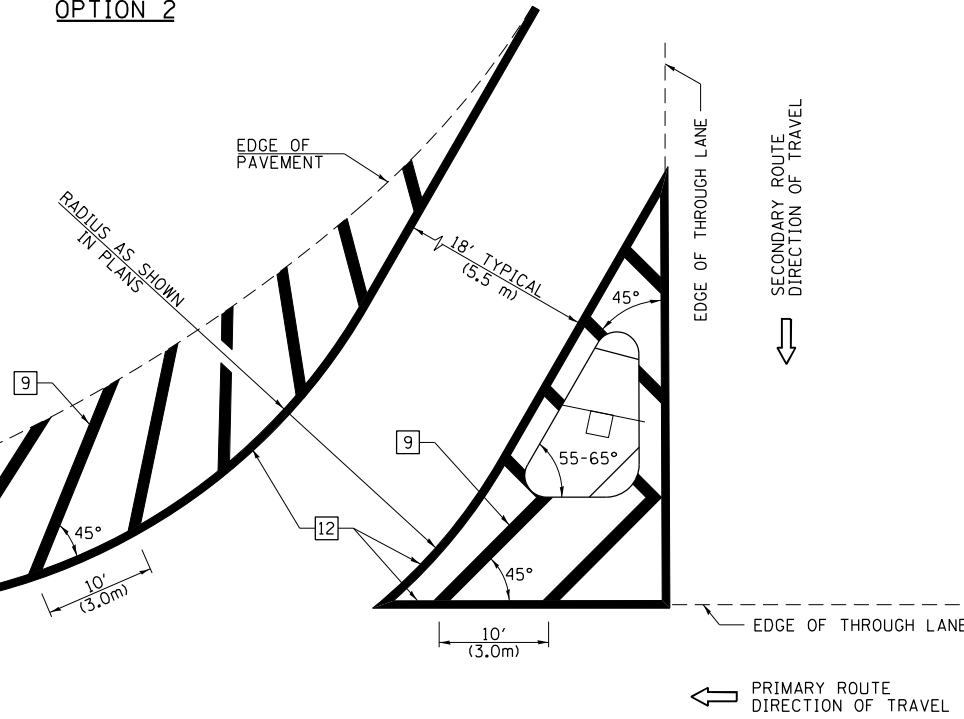
1. RAISED AND CORRUGATED MEDIANS SHALL BE OUTLINED WITH [2].
2. SOME OF THE INFORMATION INCLUDED WITH THIS DETAIL MAY NOT BE APPLICABLE TO THIS IMPROVEMENT.
3. PAVEMENT MARKINGS ARE TO BE EXTENDED THROUGH OMISSIONS WHEN APPLICABLE.
4. FINAL PAVEMENT MARKINGS SHALL BE IN PLACE PRIOR TO PLACING ANY RAISED REFLECTIVE PAVEMENT MARKERS.
5. THE FOLLOWING CRITERIA SHALL BE USED FOR SELECTING THE DIAGONAL PAVEMENT MARKING SPACING:

< 30 MPH (< 50 km/h)	15' (4.5 m)
30-45 MPH (50-75 km/h)	20' (6.0 m)
> 45 MPH (> 75 km/h)	30' (9.0 m)
6. THE USE OF ISLAND STRIPING OPTION 1 OR OPTION 2 SHALL BE AS SHOWN ON THE PLANS.

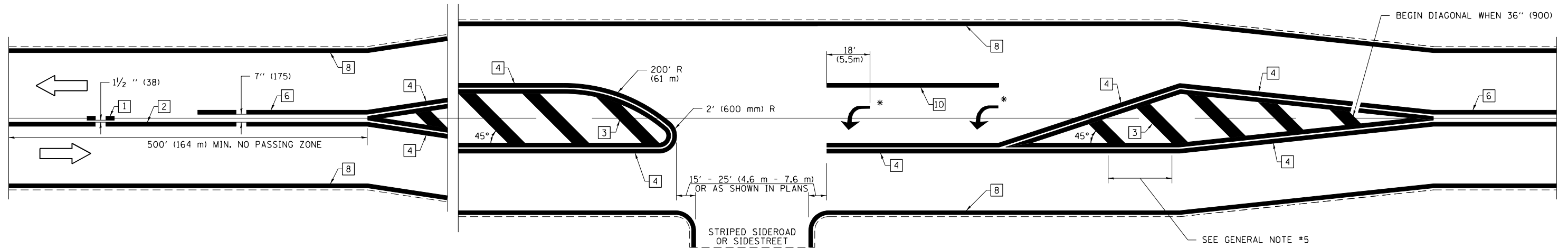
PAVEMENT MARKING LEGEND



OPTION 2



RURAL LEFT TURN STRIPING



* PLACE AN ARROW 18' (5.5 m) BACK FROM END OF THE SOLID WHITE LINE. PLACE ANOTHER ARROW EVEN WITH THE BEGINNING OF THE SOLID WHITE LINE. SPACE ADDITIONAL ARROWS EVENLY UP TO 80' (24.4 m) MAXIMUM SPACING. USE MINIMUM OF 2 ARROWS.

NOT TO SCALE

Note: All dimensions are in INCHES (millimeters) unless otherwise shown.

DISTRICT 7 DETAIL NO. 7800001

USER NAME = dreimer	DESIGNED -	REVISED - NAS 06/22
PLOT SCALE = 100,0000' / in.	DRAWN -	REVISED -
PLOT DATE = 12/11/2023	CHECKED -	REVISED -
	DATE -	REVISED -

**STATE OF ILLINOIS
DEPARTMENT OF TRANSPORTATION**

**PAVEMENT MARKING AND RAISED REFLECTIVE PAVEMENT MARKERS
(RURAL & URBAN APPLICATIONS)**

SCALE: SHEET 3 OF 4 SHEETS STA. TO STA.

F.A.P. RTE.	SECTION	COUNTY	TOTAL SHEETS	SHEET NO.
320	(101)RS-4	MACON	21	20
CONTRACT NO. 74C17				
ILLINOIS FED. AID PROJECT				

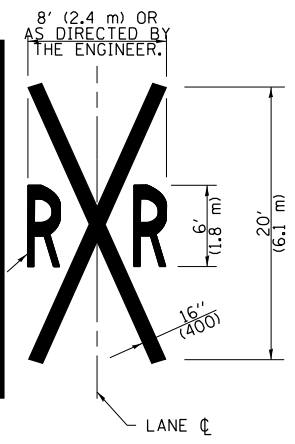
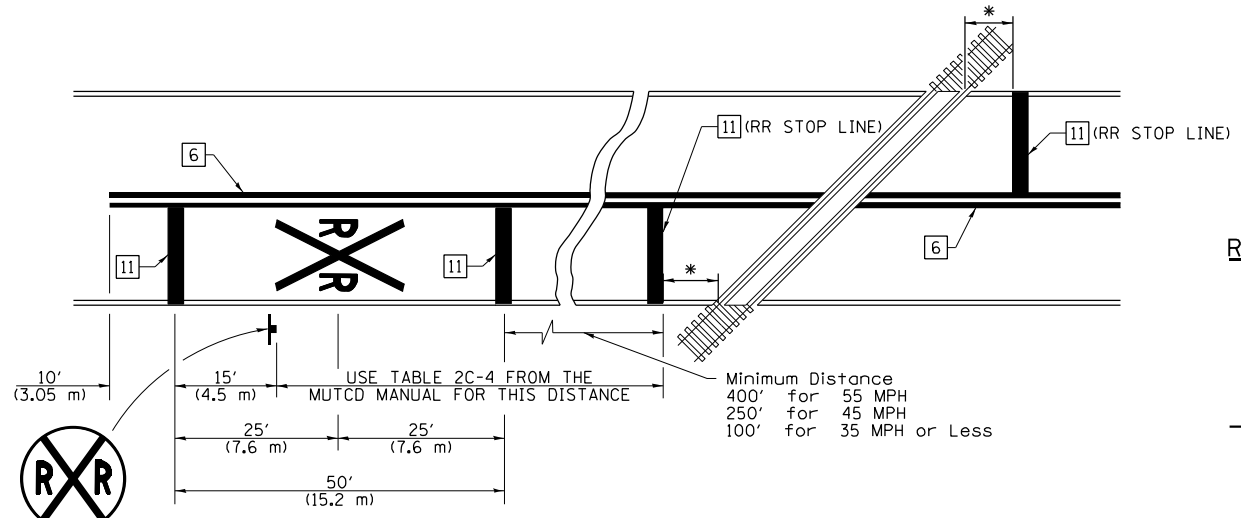
MODEL Path: \\... FILE NAME: 202202202060591 - PFB_2044239_V0_#3_IL_121_C# 74C1704_Drawing(DGN)CAD_Sheets(7)74C17-shs-detail1-D8r-fc.dwg

SUPPLEMENTAL PAVEMENT MARKING TREATMENT FOR RAILROAD-HIGHWAY GRADE CROSSING

PAVEMENT MARKING LEGEND

- 1 4" (100) SKIP-DASH (YELLOW)
 - 2 4" (100) SOLID (YELLOW)
 - 3 12" (300) DIAGONAL (YELLOW)
 - 4 4" (100) DOUBLE YELLOW (NARROW)
 - 5 12" (300) SOLID WHITE
 - 6 4" (100) DOUBLE YELLOW (WIDE)
 - 7 6" (150) SKIP-DASH (WHITE)
 - 8 4" (100) SOLID (WHITE)
 - 9 12" (300) DIAGONAL (WHITE)
 - 10 6" (150) SOLID (WHITE)
 - 11 24" (600) STOP BAR (WHITE)
 - 12 8" (200) SOLID (WHITE)
 - 13 4" (100) PARKING WHITE
-

PAVEMENT MARKINGS AT RAILROAD-HIGHWAY GRADE CROSSING



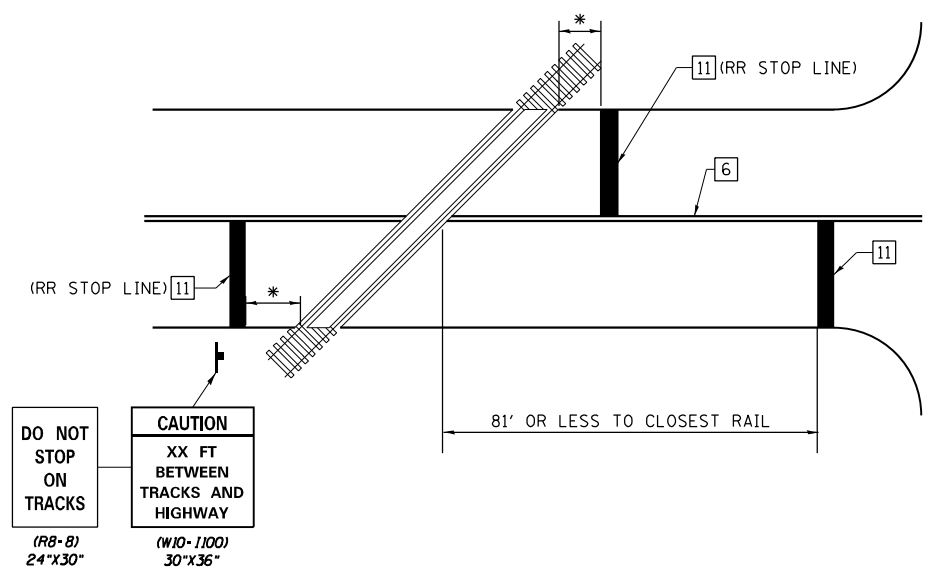
NOTES

THE TRAVERSE SPREAD OF THE "X" MAY VARY ACCORDING TO LANE WIDTH.

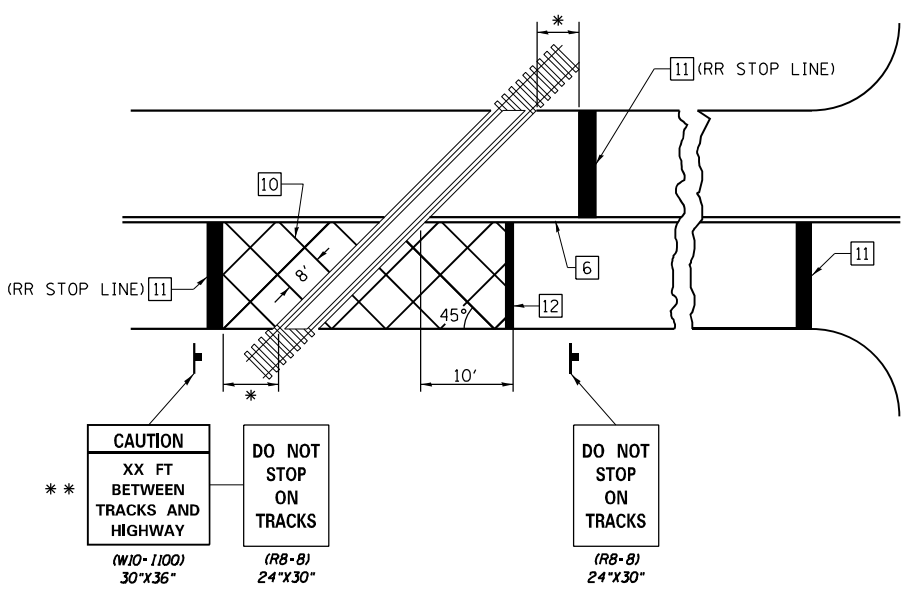
ON MULTI-LANE ROADS, THE STOP LINES SHALL EXTEND ACROSS ALL APPROACH LANES AND SEPARATE RRR SYMBOLS SHALL BE PLACED ADJACENT TO EACH OTHER IN EACH LANE.

WHEN THE PAVEMENT MARKING SYMBOL IS USED, A PORTION OF THE SYMBOL SHOULD BE LOCATED DIRECTLY ADJACENT TO THE ADVANCE WARNING SIGN (W10-1) AS PLACED BY TABLE II-1, CONDITION B OF THE MUTCD.

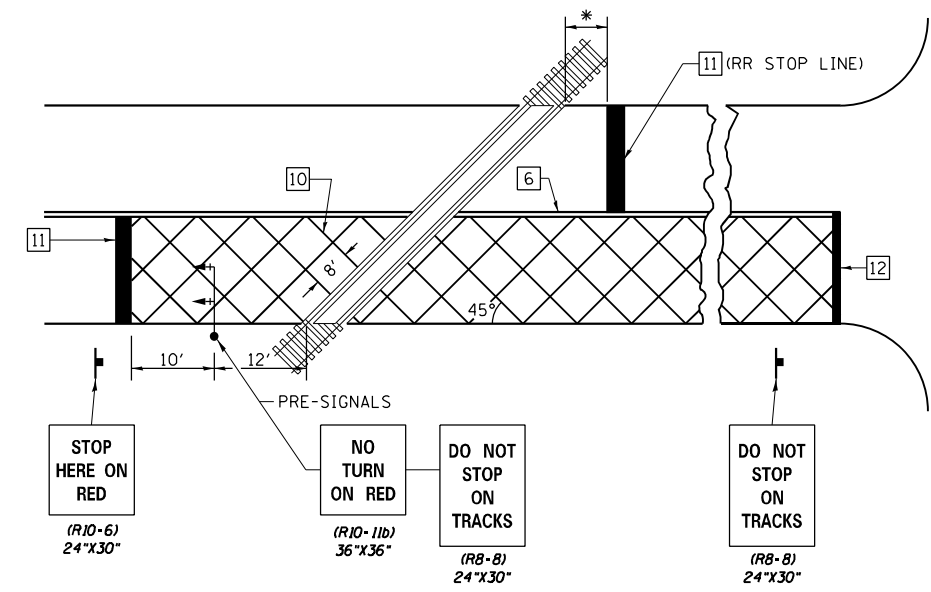
RAILROAD CROSSING WITH NON-SIGNALIZED INTERSECTION



RAILROAD CROSSING WITH INTERCONNECT ONLY

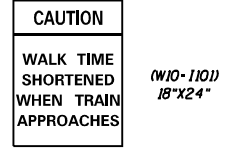


RAILROAD CROSSING WITH INTERCONNECT AND PRE-SIGNALS



GENERAL NOTES

- SUPPLEMENTAL PAVEMENT MARKINGS TO BE INSTALLED ONLY ON APPROACHES TO INTERSECTIONS CONTROLLED BY TRAFFIC SIGNALS WHICH ARE INTERCONNECTED WITH THE RAILROAD WARNING SIGNALS.
- EXTEND PAVEMENT MARKINGS TO THE INTERSECTION ONLY WHERE PRE-SIGNALS ARE USED.
- WHEN PEDESTRIAN SIGNALS ARE PRESENT WITH INTERCONNECTED SIGNALS, WARNING SIGN W10-1101 (18"X24") SHALL BE PLACED NEAR EACH PEDESTRIAN SIGNAL HEAD. COUNTDOWN PEDESTRIAN SIGNAL HEADS SHALL NOT BE UTILIZED ALONG WITH INTERCONNECTED SIGNALS.
- PLEASE REFER TO THE IDOT BUREAU OF OPERATION MEMO OPS T-06 DATED DECEMBER 1, 2020 FOR ADDITIONAL INFORMATION.



- * 15' FROM NEAR RAIL OR 8' FROM AND PARALLEL TO GATE IF PRESENT
- ** WARNING SIGN W10-1100 SHALL BE USED AS AN INTERIM MEASURE AT INTERCONNECTED SIGNAL LOCATIONS WHERE PRE-SIGNALS ARE TO BE INSTALLED IN THE FUTURE. THIS SIGN SHALL BE REMOVED WHEN THE PRE-SIGNALS ARE INSTALLED AND THE PAVEMENT MARKINGS ARE EXTENDED TO THE INTERSECTION.

NOT TO SCALE
Note: All dimensions are in INCHES (millimeters) unless otherwise shown.

DISTRICT 7 DETAIL NO. 7800001

MODEL: Defaul; FILE NAME: 202202202060591 - PFB_2014-2019_WO #3 II 121_C# 74C17104_Drawing(DGN)CAD_Sheet:0774C17104-dbs-detailed.dgn

USER NAME = dreimer	DESIGNED -	REVISED - NAS 06/22
PLOT SCALE = 100,0000' / in.	DRAWN -	REVISED -
PLOT DATE = 12/11/2023	CHECKED -	REVISED -
	DATE -	REVISED -

STATE OF ILLINOIS
DEPARTMENT OF TRANSPORTATION

PAVEMENT MARKING AND RAISED REFLECTIVE PAVEMENT MARKERS
(RURAL & URBAN APPLICATIONS)

F.A.P. RTE.	SECTION	COUNTY	TOTAL SHEETS	SHEET NO.
320	(101)RS-4	MACON	21	21
CONTRACT NO. 74C17				
ILLINOIS FED. AID PROJECT				

SCALE: SHEET 4 OF 4 SHEETS STA. TO STA.