

STATE OF ILLINOIS  
DEPARTMENT OF TRANSPORTATION

F.A. RTE.	SECTION	COUNTY	TOTAL SHEETS	SHEET NO.
*	DIST 8 PATCHING 2024-2	VARIOUS	5	1
*VARIOUS		ILLINOIS	CONTRACT NO. 76T13	

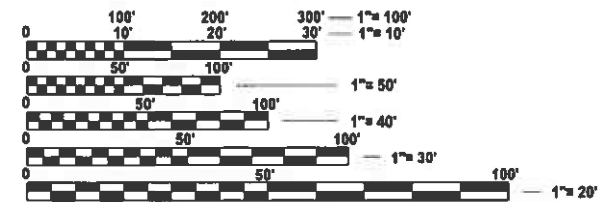
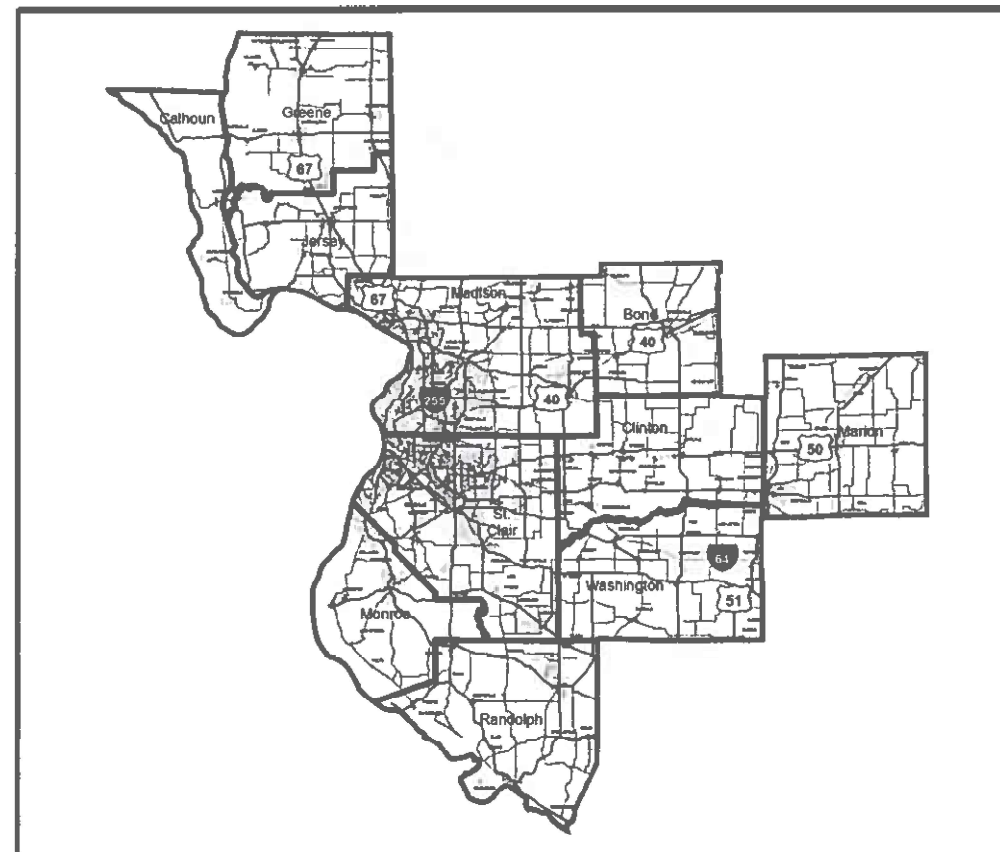
**INDEX OF SHEETS**

1. COVER SHEET
2. HIGHWAY STANDARDS, GENERAL NOTES AND COMMITMENTS
- 3-4. SUMMARY OF QUANTITIES
5. DETAILS

# PROPOSED HIGHWAY PLANS

VARIOUS ROUTE  
SECTION DIST 8 PATCHING 2024-2  
PATCHING VARIOUS LOCATION DISTRICT 8  
VARIOUS COUNTY

C-98-084-23



FULL SIZE PLANS HAVE BEEN PREPARED USING STANDARD ENGINEERING SCALES. REDUCED SIZED PLANS WILL NOT CONFORM TO STANDARD SCALES. IN MAKING MEASUREMENTS ON REDUCED PLANS, THE ABOVE SCALES MAY BE USED.

J.U.L.I.E.  
JOINT UTILITY LOCATION INFORMATION FOR EXCAVATION  
1-800-892-0123  
OR 811

PROJECT ENGINEER - CHERYL KEPLAR  
PROJECT MANAGER - TONI MANN

CONTRACT NO. 76T13

STATE OF ILLINOIS  
DEPARTMENT OF TRANSPORTATION

SUBMITTED December 20, 23  
Kimberly Brown  
REGIONAL ENGINEER

February 2, 2024  
Scott A. Etkin  
ENGINEER OF DESIGN AND ENVIRONMENT

February 2, 2024  
Stephen M. Smith  
DIRECTOR OF HIGHWAYS PROJECT IMPLEMENTATION

PRINTED BY THE AUTHORITY  
OF THE STATE OF ILLINOIS





MODEL: S002 (Sheet)  
 FILE NAME: P:\Bids\2024\2024-2\Bids\DOT Documents\DOT Office\District 8\ORD Project\B76T13\CADD\Bids\CAD\Sheet\B76T13-S002.dgn

CODE NO.	ITEM	UNIT	TOTAL QUANTITY	CONSTR. CODE
				100% STATE
				NONE
				0006
				NONE
Z0038111	PAVEMENT REMOVAL FOR PATCHING, CASE A	CU YD	144	144
Z0038112	PAVEMENT REMOVAL FOR PATCHING, CASE B	CU YD	120	120
Z0038113	PAVEMENT REMOVAL FOR PATCHING, CASE C	CU YD	72	72
Z0062454	PAVEMENT REPLACEMENT, CONCRETE (SPECIAL)	CU YD	14	14
∅ Z0076604	TRAINEES TRAINING PROGRAM GRADUATE	HOUR	500	500
Z0062455	PAVEMENT REPLACEMENT, CONCRETE	CU YD	240	240

∅ 0042

REV. - MS

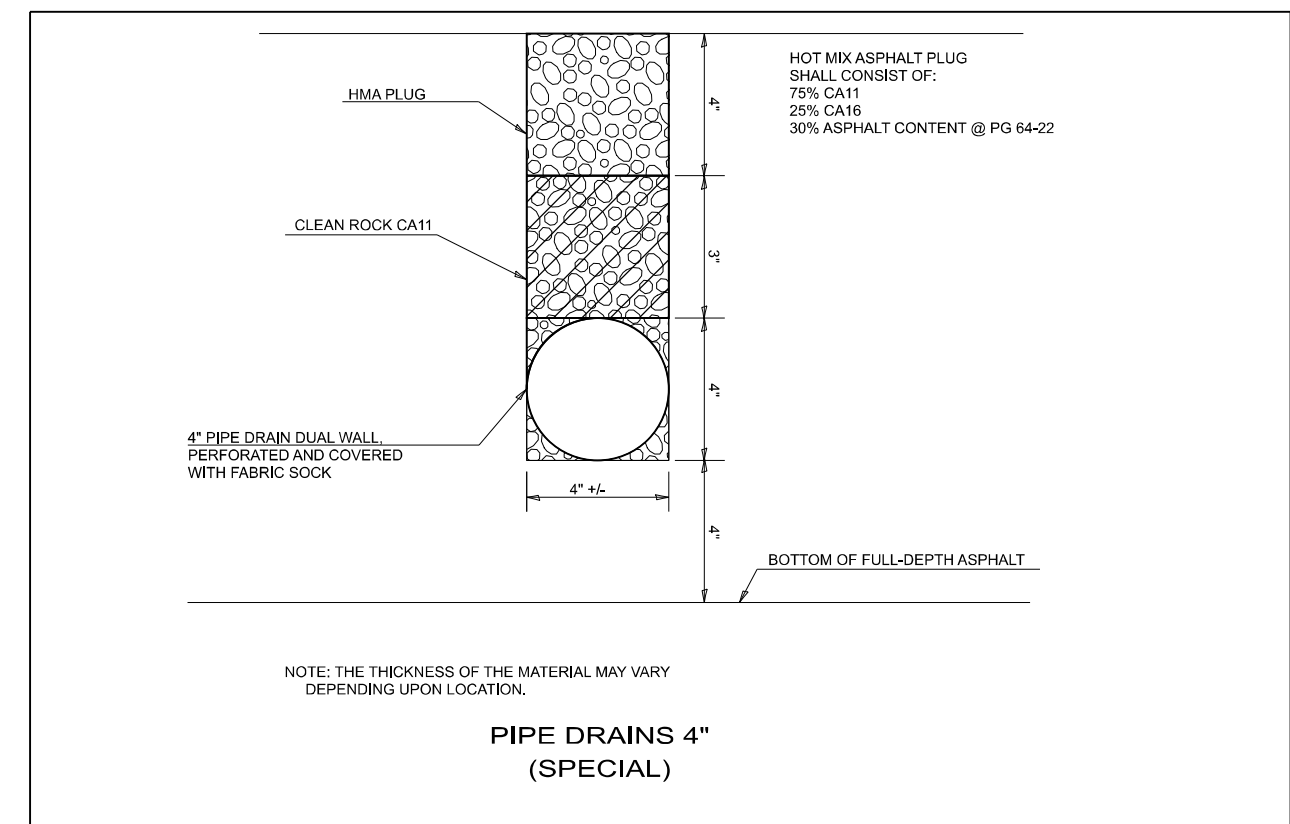
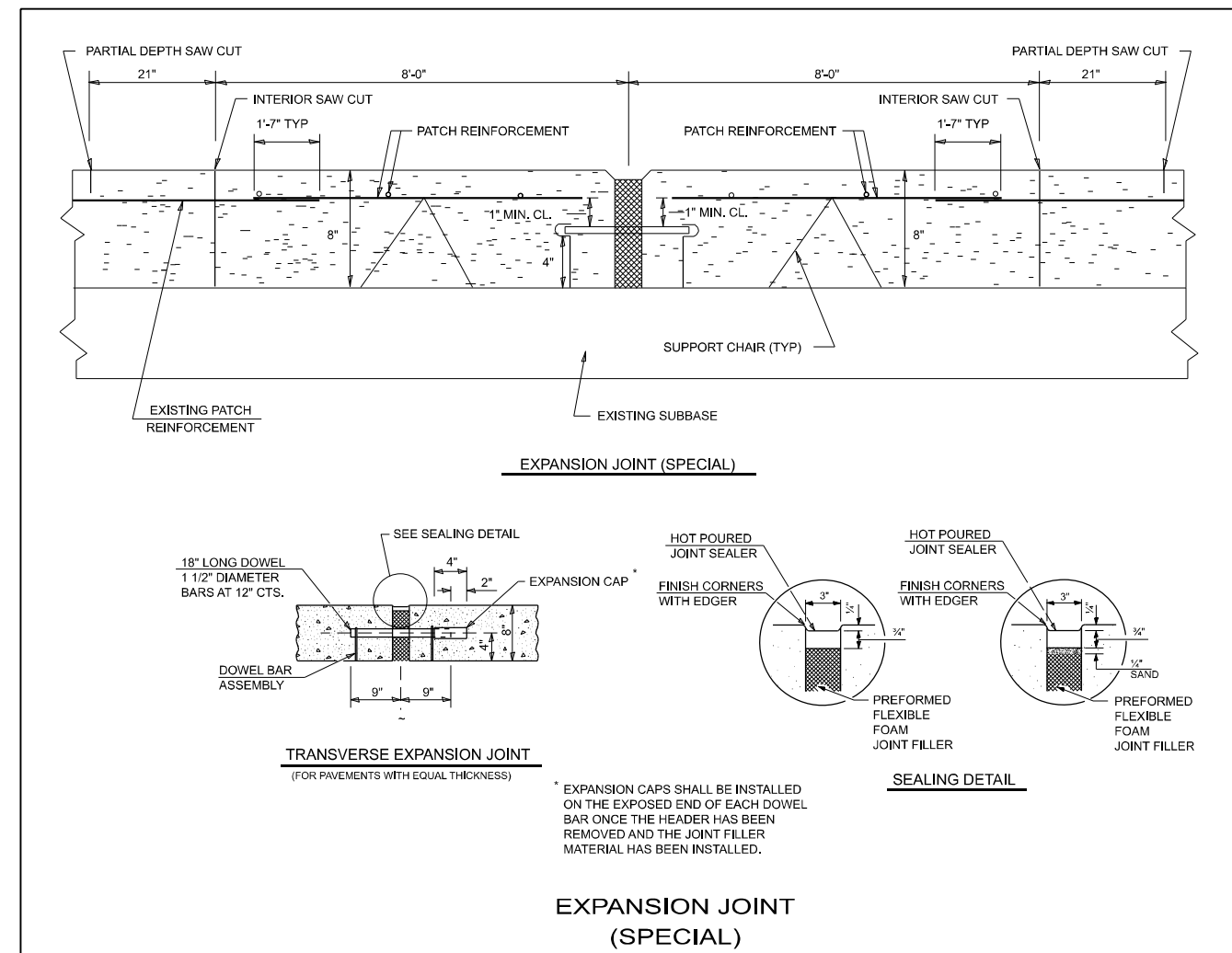
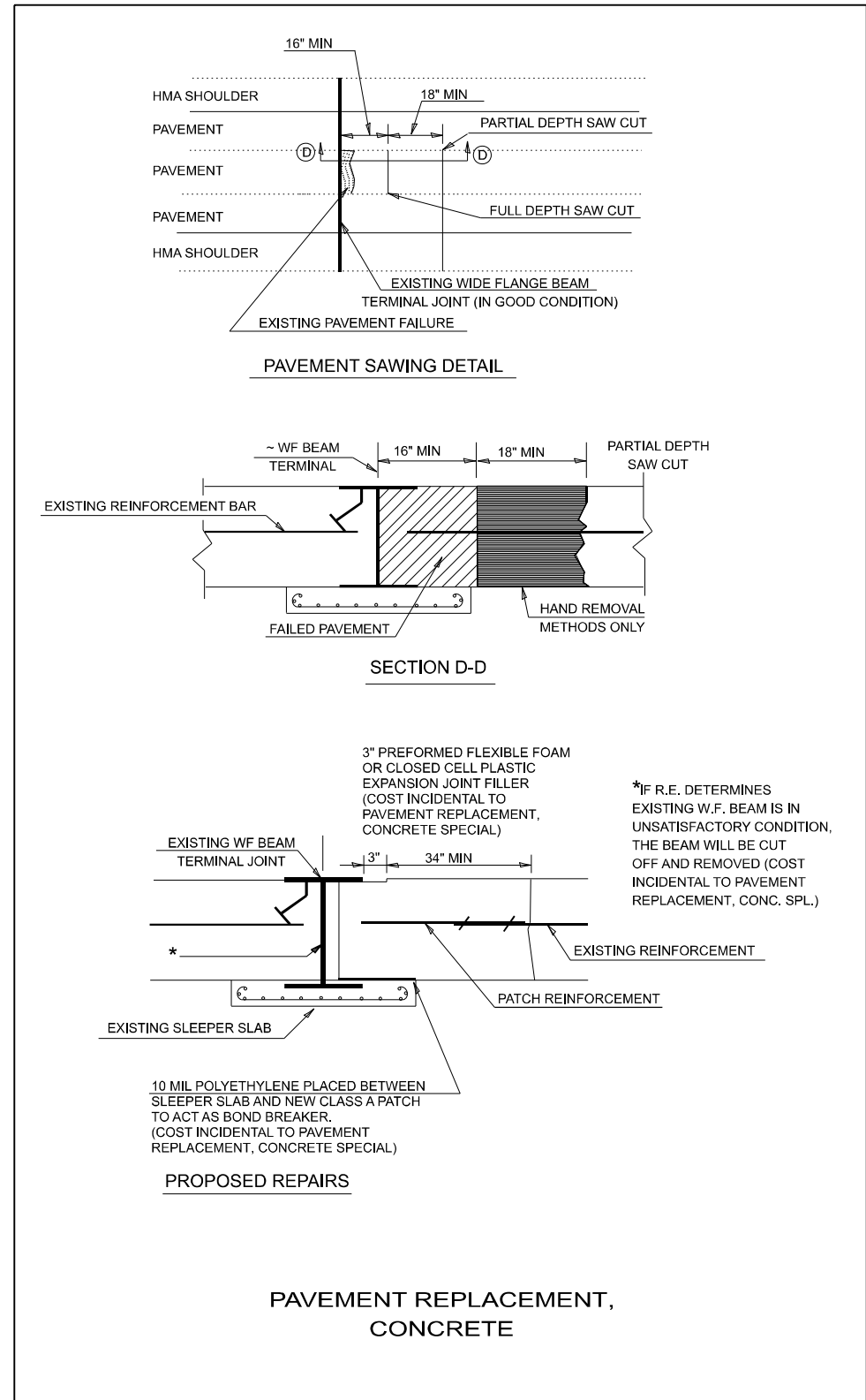
USER NAME = Kevin.Lewis	DESIGNED -	REVISED -
	DRAWN -	REVISED -
PLOT SCALE = 0.16666633' / in.	CHECKED -	REVISED -
PLOT DATE = 12/6/2023	DATE -	REVISED -

**STATE OF ILLINOIS  
 DEPARTMENT OF TRANSPORTATION**

**SUMMARY OF QUANTITIES**

SHEET 0 OF 1 SHEETS STA. \_\_\_+\_\_\_ TO STA. \_\_\_+\_\_\_

F.A. RTE.	SECTION	COUNTY	TOTAL SHEETS	SHEET NO.
*	DIST 8 PATCHING 2024-2	VARIOUS	5	4
*VARIOUS			CONTRACT NO. 76T13	
ILLINOIS		FED. AID PROJECT		



MODEL: detail sheet (Sheet)  
 FILE NAME: p:\bids\contractor\p\m\DOT\Documents\DOT Office\District 8\ORD Project\B76T13\CADD\Drawings\CAD\Drawings\B76T13-CP-Coveralls.dgn

USER NAME = Kevin.Lewis	DESIGNED -	REVISED -
PLOT SCALE = 0.16666633' / in.	DRAWN -	REVISED -
PLOT DATE = 12/6/2023	CHECKED -	REVISED -
	DATE -	REVISED -

**STATE OF ILLINOIS  
DEPARTMENT OF TRANSPORTATION**

<b>DETAILS</b>			
SCALE	SHEET 0	OF 1	SHEETS
	STA. ___+___	TO STA. ___+___	

F.A. RTE.	SECTION	COUNTY	TOTAL SHEETS	SHEET NO.
*	DIST 8 PATCHING 2024-2	VARIOUS	5	5
*VARIOUS			CONTRACT NO. 76T13	
ILLINOIS FED. AID PROJECT				